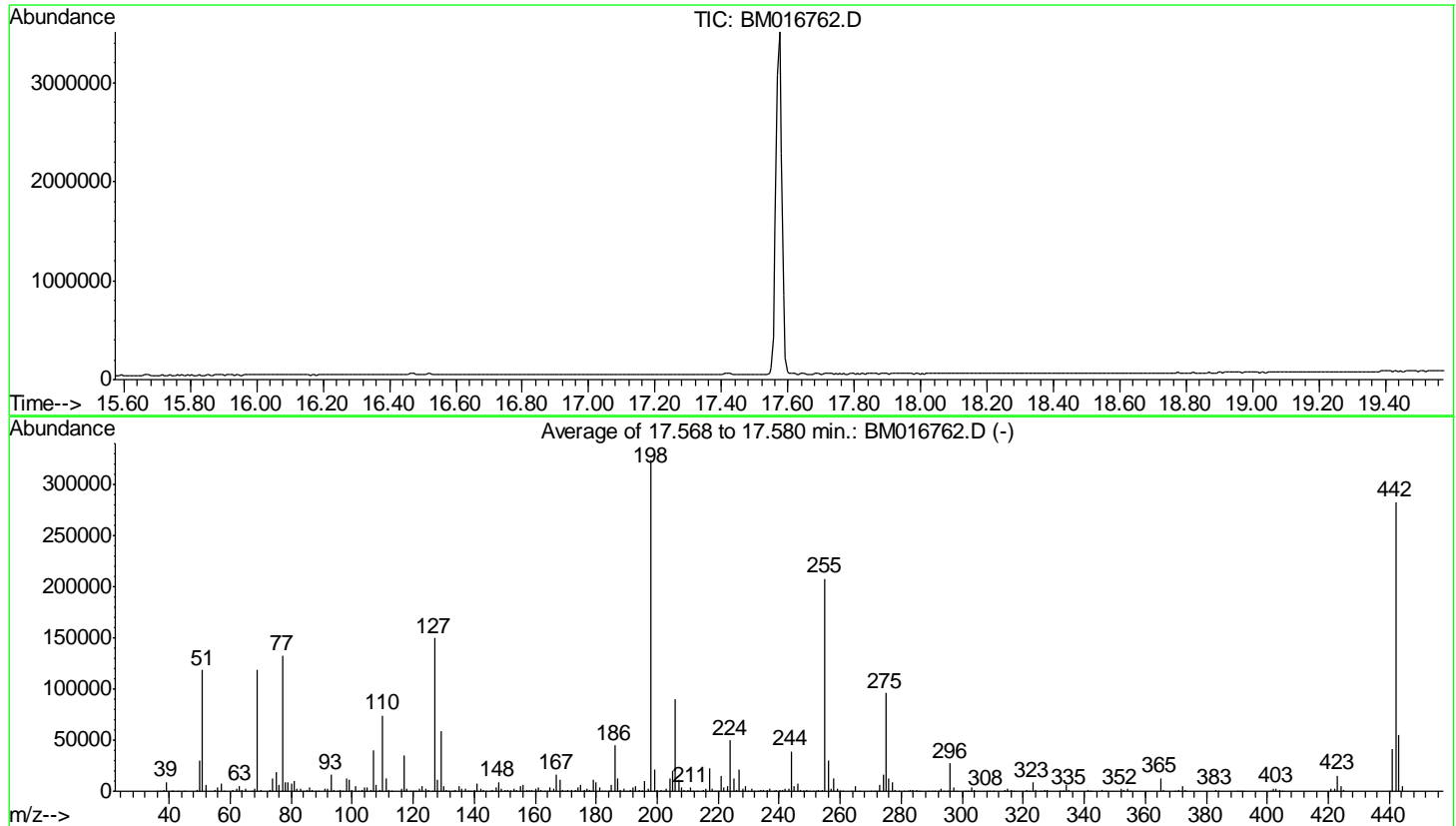


Data Path : Z:\svoasrv\HPCHEM1\BNA\_M\Data\BM091718\  
 Data File : BM016762.D  
 Acq On : 17 Sep 2018 09:15  
 Operator : SJ/JU  
 Sample : DFTPP04  
 Misc :  
 ALS Vial : 1 Sample Multiplier: 1

Instrument :  
 BNA\_M  
 ClientSampleId :  
 DFTPP04

Integration File: LSCINT.P

Method : Z:\SVOASRV\HPCHEM1\BNA\_M\METHODS\SOM-EPA-BM091018MA.M  
 Title : SVOA CALIBRATION  
 Last Update : Tue Sep 18 01:29:01 2018



AutoFind: Scans 2479, 2480, 2481; Background Corrected with Scan 2473

Target Mass	Rel. to Mass	Lower Limit%	Upper Limit%	Rel. Abn%	Raw Abn	Result Pass/Fail
51	198	10	80	36.6	118586	PASS
68	69	0.00	2	2.0	2371	PASS
69	198	0.00	100	36.7	118802	PASS
70	69	0.00	2	0.6	684	PASS
127	198	10	80	46.2	149573	PASS
197	198	0.00	2	0.7	2274	PASS
198	198	100	100	100.0	323904	PASS
199	198	5	9	6.8	21909	PASS
275	198	10	60	29.6	95922	PASS
365	198	1	100	3.9	12530	PASS
441	198	0.01	100	12.9	41765	PASS
442	198	50	100	87.3	282666	PASS
443	442	15	24	19.6	55346	PASS

m/z	Abundance
36.00	365.0
37.00	767.0
38.10	1773.0
39.10	10482.0
40.00	33168.0
41.20	405.0
44.00	18136.0
45.00	506.0
49.20	1168.0
50.10	35376.0
51.00	141376.0
52.00	7127.0
55.00	1086.0
56.00	4461.0
57.00	9316.0
57.90	497.0
60.90	1935.0
62.00	2267.0
63.00	6032.0
64.00	802.0
65.00	2487.0
67.10	371.0
68.00	2998.0
69.00	138688.0
70.00	793.0
73.00	1718.0
74.00	15439.0
75.00	23176.0
76.10	7229.0
77.10	152064.0
78.10	10533.0
79.00	10797.0
80.00	8202.0
81.00	11110.0
82.00	2671.0
83.00	2324.0
84.00	747.0
85.00	1746.0
86.00	3754.0
87.00	1631.0
88.00	488.0
88.90	387.0
91.00	2869.0
92.00	2897.0
93.00	18896.0
94.00	1153.0
95.10	300.0
96.00	862.0
97.10	515.0
98.00	14733.0
99.00	13859.0
100.00	1180.0
101.00	5859.0
101.90	328.0
103.00	2285.0
104.00	3997.0
105.00	4198.0
106.10	1217.0
107.00	46768.0
108.00	7171.0
109.10	1654.0
110.00	83504.0
111.00	13819.0
111.90	1738.0
113.00	711.0
116.10	2985.0
117.00	39688.0
118.00	3496.0
119.00	454.0
120.00	814.0
122.00	3763.0
123.00	5127.0
124.00	2541.0
125.00	2363.0
127.00	164864.0
128.00	12446.0
129.00	65352.0
130.00	4995.0
131.00	1320.0
131.90	767.0
133.00	440.0
134.00	1988.0
135.00	5143.0
135.90	2186.0
137.00	3306.0
137.80	447.0
139.00	398.0
140.00	1142.0
141.00	8389.0
142.00	2663.0
142.90	2048.0

Instrument :  
BNA\_M  
ClientSampleId :  
DFTPP04

144.00	473.0
145.00	354.0
146.00	1271.0
147.00	4484.0
148.00	10179.0
149.00	3062.0
150.10	851.0
151.00	1240.0
153.00	2852.0
153.90	1947.0
155.00	4743.0
156.00	7843.0
157.10	1351.0
158.00	1672.0
158.90	918.0
160.00	2576.0
160.90	3747.0
162.00	1039.0
162.90	360.0
163.80	455.0
165.00	4256.0
166.00	3000.0
167.00	17480.0
168.00	13646.0
169.00	2041.0
169.90	865.0
170.80	665.0
172.00	1694.0
173.00	1746.0
174.00	4338.0
175.00	5772.0
176.00	1952.0
177.00	3611.0
177.90	1080.0
179.00	12054.0
180.00	9627.0
181.00	3494.0
181.90	621.0
182.70	312.0
183.90	859.0
185.00	5824.0
186.00	45512.0
187.00	14456.0
187.90	1554.0
189.00	3573.0
190.00	614.0
191.00	1780.0
191.90	4200.0
193.00	4681.0
194.00	990.0
194.90	426.0
196.00	11870.0
197.10	2219.0
198.00	338240.0
198.90	23328.0
200.00	1392.0
201.30	1864.0
203.00	2645.0
204.00	12932.0
205.00	20624.0
206.00	92688.0
207.00	13453.0
208.00	3309.0
209.00	1162.0
210.10	1463.0
211.10	3279.0
211.70	942.0
212.90	391.0
215.00	1215.0
216.00	1854.0
217.00	25208.0
218.00	3233.0
219.80	359.0
221.00	14268.0
221.80	3489.0
223.00	5081.0
224.00	50440.0
225.00	12021.0
226.10	1870.0
227.00	22024.0
228.00	2862.0
229.00	4565.0
230.00	545.0
231.00	1882.0
232.90	468.0
233.90	1679.0
234.90	1606.0
235.90	979.0
237.00	2718.0
238.00	368.0
239.00	650.0
240.00	866.0
240.90	1111.0
242.10	2316.0
243.00	2602.0

Instrument :  
BNA\_M  
ClientSampleId :  
DFTPP04

244.00	38936.0
245.00	4713.0
246.00	8149.0
247.00	1671.0
247.80	619.0
249.00	1404.0
250.00	441.0
251.00	398.0
251.90	355.0
253.10	843.0
254.20	1484.0
255.00	206720.0
256.00	31624.0
257.00	2891.0
258.00	12205.0
259.00	1870.0
259.90	398.0
261.00	348.0
263.80	359.0
265.00	4734.0
266.00	763.0
269.90	474.0
271.10	379.0
272.00	350.0
273.00	5764.0
274.00	16400.0
275.00	94616.0
276.00	12742.0
277.00	8051.0
278.00	1321.0
279.00	518.0
281.10	692.0
283.10	684.0
284.00	517.0
285.00	1692.0
286.10	309.0
289.00	303.0
289.90	352.0
293.00	1854.0
294.00	666.0
294.90	859.0
296.00	25296.0
297.00	4167.0
298.00	328.0
300.90	319.0
302.00	494.0
303.10	2767.0
304.10	976.0
307.90	303.0
310.10	346.0
314.20	1104.0
315.00	2971.0
316.00	2177.0
317.00	330.0
321.00	826.0
322.10	583.0
323.00	7918.0
324.00	1836.0
326.90	1765.0
328.00	963.0
331.80	621.0
332.80	662.0
334.00	5353.0
335.10	1443.0
341.10	873.0
346.00	1727.0
347.00	519.0
352.00	2321.0
353.00	1669.0
354.00	2350.0
355.10	601.0
365.00	11599.0
366.00	1515.0
371.00	571.0
372.10	3881.0
373.10	823.0
383.00	1199.0
384.00	311.0
390.10	405.0
391.00	413.0
400.90	423.0
402.00	2051.0
403.00	2018.0
404.00	750.0
421.00	1837.0
422.00	2352.0
423.00	13137.0
424.00	5524.0
425.00	854.0
441.10	33160.0
442.10	230592.0
443.10	47280.0
444.10	4422.0

Instrument :  
BNA\_M  
ClientSampleId :  
DFTPP04

m/z	Abundance
37.00	548.0
38.10	1652.0
39.10	10654.0
40.00	32880.0
40.90	372.0
44.00	18632.0
44.90	633.0
49.00	1632.0
50.00	34248.0
51.00	138368.0
52.00	6441.0
55.00	808.0
56.00	4624.0
57.00	9258.0
57.90	380.0
61.00	2058.0
62.00	2359.0
63.00	6019.0
64.00	889.0
65.00	2882.0
68.10	2715.0
69.00	139648.0
70.00	817.0
73.00	1334.0
74.00	13947.0
75.00	21432.0
76.00	7743.0
77.10	157440.0
78.10	11018.0
79.00	11084.0
80.10	7871.0
81.00	10938.0
82.00	2632.0
83.00	2038.0
84.00	588.0
85.00	1800.0
86.00	3714.0
86.90	1672.0
87.90	752.0
90.90	2529.0
92.00	2736.0
93.00	19408.0
94.00	1507.0
96.00	654.0
96.90	386.0
98.00	14104.0
99.00	13558.0
100.00	952.0
100.90	6015.0
103.00	1824.0
104.00	4199.0
105.00	3458.0
105.90	1194.0
106.10	1170.0
107.00	47224.0
108.00	7752.0
110.00	89160.0
111.00	13712.0
111.90	1205.0
113.00	604.0
116.00	2611.0
117.00	40928.0
118.00	3414.0
119.00	589.0
119.90	660.0
121.00	341.0
122.00	3692.0
123.00	5304.0
124.00	2409.0
125.00	2038.0
127.00	178048.0
128.00	14126.0
129.00	70624.0
130.00	6068.0
131.00	1194.0
131.90	570.0
132.90	429.0
133.90	1639.0
135.00	5390.0
136.00	2532.0
137.00	3420.0
138.00	675.0
139.00	308.0
140.00	1186.0
141.00	8863.0
142.00	3287.0
143.00	1550.0
144.00	743.0
145.00	656.0
146.10	1551.0
147.00	4182.0

Instrument :  
BNA\_M  
ClientSampleId :  
DFTPP04

148.00	11430.0
149.10	2203.0
149.90	856.0
151.10	1218.0
151.70	553.0
152.90	2951.0
154.00	2182.0
155.00	5477.0
156.00	7707.0
157.10	1635.0
157.90	1910.0
159.00	1187.0
160.00	3156.0
160.90	3928.0
162.00	1342.0
163.00	551.0
163.80	332.0
165.00	3583.0
166.00	2873.0
167.00	17672.0
168.00	13105.0
169.00	1893.0
170.00	521.0
170.90	932.0
172.00	1688.0
173.00	2090.0
174.00	4402.0
175.00	7906.0
176.10	2050.0
177.00	3556.0
177.90	1246.0
179.00	15273.0
180.00	10685.0
181.00	4631.0
182.00	787.0
183.90	1037.0
185.00	7279.0
186.00	55480.0
187.00	15692.0
188.00	1726.0
189.00	3377.0
189.90	610.0
191.00	1953.0
192.00	4462.0
193.00	5726.0
194.00	1027.0
195.10	602.0
196.00	12175.0
197.10	3008.0
198.00	390208.0
199.00	25776.0
200.00	1877.0
201.40	1760.0
202.10	533.0
202.90	2522.0
204.00	15040.0
205.00	24072.0
206.00	110216.0
207.10	14704.0
208.00	3826.0
209.10	1381.0
210.00	1536.0
211.00	3849.0
212.80	562.0
214.90	1385.0
216.00	2732.0
217.00	26016.0
218.00	3449.0
220.30	1169.0
221.00	17552.0
221.70	4580.0
223.00	6615.0
224.00	60480.0
225.00	15624.0
226.10	1958.0
227.00	25496.0
228.00	3685.0
229.00	5675.0
229.90	549.0
231.00	2323.0
231.90	463.0
232.90	307.0
233.90	1635.0
235.00	1756.0
236.00	1380.0
237.00	2597.0
239.00	1015.0
240.10	775.0
240.90	1279.0
242.00	3284.0
243.10	3546.0
244.00	46688.0
245.00	6053.0
246.00	9394.0
247.00	1838.0

Instrument :  
BNA\_M  
ClientSampleId :  
DFTPP04

248.00	383.0
249.00	1629.0
251.00	510.0
251.90	311.0
253.00	1000.0
254.10	2149.0
255.00	250624.0
256.00	35944.0
257.00	3317.0
258.00	14015.0
259.00	2060.0
260.10	484.0
260.80	361.0
265.00	6037.0
266.00	840.0
271.00	625.0
272.00	802.0
273.00	7618.0
274.00	20224.0
275.00	114312.0
276.00	14700.0
277.00	10604.0
278.00	2188.0
279.00	535.0
281.00	429.0
283.00	1253.0
284.00	991.0
285.00	1905.0
285.90	322.0
289.00	450.0
290.00	534.0
290.90	310.0
292.00	462.0
293.00	2329.0
293.90	526.0
295.00	654.0
296.00	32728.0
297.00	4418.0
298.00	373.0
301.00	435.0
302.00	804.0
303.00	3899.0
304.00	931.0
308.00	412.0
308.90	421.0
309.90	419.0
314.00	1602.0
315.00	3339.0
316.10	1972.0
317.00	425.0
321.10	940.0
322.00	598.0
323.10	9656.0
324.00	1764.0
325.80	403.0
327.00	1848.0
328.00	1031.0
332.00	804.0
333.10	1186.0
334.00	7012.0
335.00	1726.0
341.00	1166.0
341.90	445.0
346.00	1894.0
346.90	488.0
352.00	3150.0
353.00	1968.0
354.00	2886.0
355.10	630.0
365.00	14786.0
366.00	1967.0
369.80	360.0
370.90	693.0
372.10	5898.0
373.00	1249.0
383.00	1798.0
384.00	400.0
390.00	818.0
391.00	681.0
392.10	359.0
401.00	332.0
402.00	2243.0
403.00	3462.0
404.00	1512.0
405.00	394.0
421.00	2540.0
422.00	3103.0
423.00	17560.0
424.10	5790.0
425.00	964.0
440.00	405.0
441.10	49000.0
442.10	335488.0
443.10	67232.0
444.10	5877.0

Instrument :  
BNA\_M  
ClientSampleId :  
DFTPP04

m/z	Abundance
37.00	341.0
38.00	771.0
39.00	5713.0
40.00	34376.0
41.10	388.0
43.00	367.0
44.00	20008.0
45.00	449.0
49.00	873.0
50.00	19528.0
51.00	76016.0
52.00	3888.0
54.90	439.0
56.00	2482.0
57.00	4777.0
57.90	396.0
61.00	986.0
62.00	1409.0
63.00	3170.0
64.00	780.0
65.10	1477.0
68.00	1401.0
69.00	78072.0
69.90	444.0
72.90	860.0
74.00	8261.0
75.00	11900.0
76.10	4199.0
77.00	87952.0
78.00	5573.0
79.00	6341.0
80.00	5387.0
81.00	7039.0
82.00	1770.0
83.00	1449.0
83.80	413.0
84.90	1076.0
86.00	2050.0
87.00	876.0
87.90	331.0
91.00	1539.0
92.00	2116.0
93.00	10424.0
94.00	928.0
96.00	589.0
98.00	8532.0
99.00	7317.0
100.10	755.0
101.00	3636.0
103.00	1463.0
104.00	2086.0
105.00	2428.0
106.10	1124.0
107.00	27320.0
108.00	4921.0
109.10	913.0
110.00	49488.0
111.00	8336.0
112.00	704.0
116.00	1839.0
117.00	23744.0
118.00	1696.0
119.10	416.0
119.90	377.0
122.00	1993.0
123.00	3027.0
124.00	1231.0
125.00	1216.0
126.20	533.0
127.00	105808.0
128.00	7634.0
129.00	41040.0
130.00	3393.0
131.00	463.0
133.00	316.0
133.90	1186.0
135.00	3356.0
136.00	1436.0
137.00	2403.0
138.00	352.0
139.00	400.0
140.10	563.0
141.00	5565.0
141.90	1090.0
143.10	1082.0
145.90	871.0
147.00	2778.0
148.00	6369.0
149.00	1720.0
149.80	411.0
151.20	765.0

Instrument :  
BNA\_M  
ClientSampleId :  
DFTPP04



152.00	436.0
153.00	1834.0
154.00	1320.0
155.00	3314.0
156.00	4544.0
157.00	1031.0
158.00	900.0
159.00	721.0
159.90	1891.0
161.00	2465.0
161.90	890.0
163.90	324.0
165.00	2459.0
166.00	1774.0
167.00	12347.0
168.00	8088.0
169.00	1489.0
169.90	465.0
170.90	561.0
171.90	932.0
173.00	1188.0
174.00	2299.0
175.00	4606.0
176.00	1471.0
176.90	2233.0
178.10	759.0
179.00	8366.0
180.00	7525.0
181.00	2709.0
184.10	654.0
185.00	4738.0
186.00	33288.0
187.00	8784.0
188.00	1028.0
188.90	2394.0
189.90	425.0
191.10	1164.0
192.00	3050.0
193.00	3397.0
193.90	636.0
195.10	365.0
196.00	7485.0
197.00	1595.0
198.00	243264.0
199.00	16624.0
199.90	1309.0
201.40	1049.0
203.00	1808.0
204.00	8909.0
205.00	15251.0
206.00	68024.0
207.00	10472.0
208.10	2642.0
208.90	973.0
210.00	1029.0
211.00	2881.0
211.80	525.0
214.80	664.0
216.00	1688.0
217.00	18136.0
218.00	2314.0
218.90	338.0
220.30	721.0
221.00	11490.0
221.90	2442.0
223.00	3817.0
224.00	39024.0
225.00	10281.0
226.00	1168.0
227.00	15757.0
228.00	2209.0
229.00	3759.0
230.00	532.0
231.00	1609.0
233.00	560.0
234.00	935.0
235.00	1254.0
236.00	770.0
237.00	1738.0
238.90	640.0
240.00	549.0
241.00	1114.0
242.00	2143.0
243.00	1919.0
244.00	31488.0
245.00	3737.0
246.00	6340.0
247.00	1279.0
249.00	1257.0
251.10	468.0
252.00	339.0
252.90	670.0
254.10	1185.0
255.00	166528.0
256.00	23264.0

Instrument :  
BNA\_M  
ClientSampleId :  
DFTPP04

256.90	1871.0
258.00	10806.0
258.90	1878.0
264.90	3739.0
265.90	410.0
271.00	386.0
272.10	459.0
273.00	4704.0
274.00	13343.0
275.00	78840.0
276.00	9688.0
277.00	6993.0
278.00	1033.0
280.90	373.0
282.00	302.0
283.10	697.0
284.00	607.0
285.00	1446.0
288.90	318.0
292.00	384.0
293.00	2131.0
294.00	520.0
295.10	433.0
296.00	23152.0
297.00	2720.0
301.90	585.0
303.00	3108.0
303.90	819.0
308.00	321.0
314.00	1218.0
315.00	2541.0
316.00	1230.0
321.00	866.0
322.00	583.0
323.00	7274.0
324.10	1194.0
326.90	1366.0
328.00	789.0
332.00	748.0
332.90	616.0
334.00	4835.0
335.00	1372.0
341.00	933.0
345.90	1608.0
346.90	308.0
352.10	2027.0
353.10	1432.0
354.00	2244.0
354.90	622.0
365.00	11207.0
366.00	1511.0
371.10	826.0
372.10	4307.0
373.00	998.0
383.00	1158.0
384.10	415.0
390.00	574.0
390.90	629.0
400.90	373.0
402.00	1821.0
403.00	2335.0
404.10	1056.0
421.00	2107.0
422.10	2311.0
423.00	15234.0
424.00	4480.0
424.90	763.0
441.10	43136.0
442.10	281920.0
443.10	51528.0
444.10	4031.0

Instrument :  
BNA\_M  
ClientSampleId :  
DFTPP04

m/z	Abundance
40.00	34192.0
44.00	20280.0
48.90	333.0
73.00	347.0
207.00	1671.0
281.00	388.0

**Instrument :**  
BNA\_M  
**ClientSampleId :**  
DFTPP04