

Data Path : Z:\svoasrv\HPCHEM1\BNA\_M\Data\BM091824\  
 Data File : BM047558.D  
 Acq On : 18 Sep 2024 16:26  
 Operator : RC/JU  
 Sample : P4085-03  
 Misc :  
 ALS Vial : 7 Sample Multiplier: 1

Instrument :  
 BNA\_M  
 ClientSampleId :  
 COMP-2

Quant Time: Sep 18 17:43:24 2024  
 Quant Method : Z:\svoasrv\HPCHEM1\BNA\_M\Methods\8270-BM091424.M  
 Quant Title : ASP BNA STANDARDS FOR 5 POINT CALIBRATION  
 QLast Update : Sun Sep 15 08:56:37 2024  
 Response via : Initial Calibration

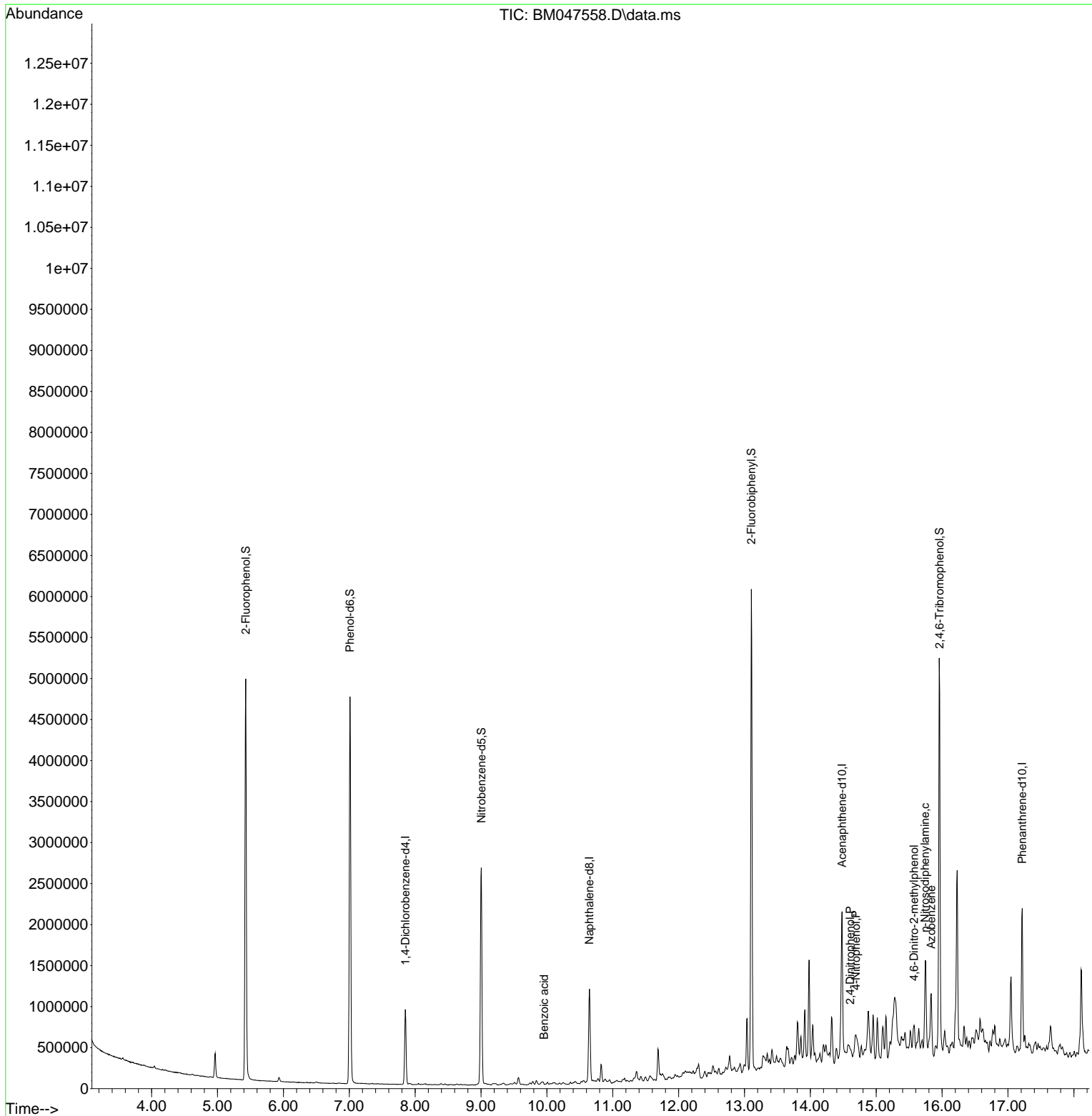
Compound	R.T.	QIon	Response	Conc	Units	Dev(Min)
Internal Standards						
1) 1,4-Dichlorobenzene-d4	7.851	152	216850	20.000	ng	0.00
21) Naphthalene-d8	10.645	136	871345	20.000	ng	0.00
39) Acenaphthene-d10	14.480	164	477658	20.000	ng	0.00
64) Phenanthrene-d10	17.215	188	926931	20.000	ng	0.00
76) Chrysene-d12	21.439	240	778694	20.000	ng	0.00
86) Perylene-d12	24.462	264	928222	20.000	ng	0.00
System Monitoring Compounds						
5) 2-Fluorophenol	5.428	112	1971800	144.779	ng	0.00
7) Phenol-d6	7.010	99	2475310	129.057	ng	0.00
23) Nitrobenzene-d5	9.004	82	1504737	86.425	ng	0.00
42) 2,4,6-Tribromophenol	15.963	330	556670	120.570	ng	0.00
45) 2-Fluorobiphenyl	13.104	172	2575528	74.276	ng	0.00
79) Terphenyl-d14	19.827	244	3909609	89.968	ng	0.00
Target Compounds						
32) Benzoic acid	9.957	122	53	6.704	ng	# 1
54) 2,4-Dinitrophenol	14.604	184	80	2.591	ng	# 1
56) 4-Nitrophenol	14.692	139	15074	2.398	ng	# 53
63) Azobenzene	15.833	77	182676	4.788	ng	# 1
65) 4,6-Dinitro-2-methylph...	15.574	198	989	7.350	ng	# 1
66) n-Nitrosodiphenylamine	15.739	169	63053	2.224	ng	# 44

(#) = qualifier out of range (m) = manual integration (+) = signals summed

Data Path : Z:\svoasrv\HPCHEM1\BNA\_M\Data\BM091824\  
 Data File : BM047558.D  
 Acq On : 18 Sep 2024 16:26  
 Operator : RC/JU  
 Sample : P4085-03  
 Misc :  
 ALS Vial : 7 Sample Multiplier: 1

Instrument :  
 BNA\_M  
 ClientSampleId :  
 COMP-2

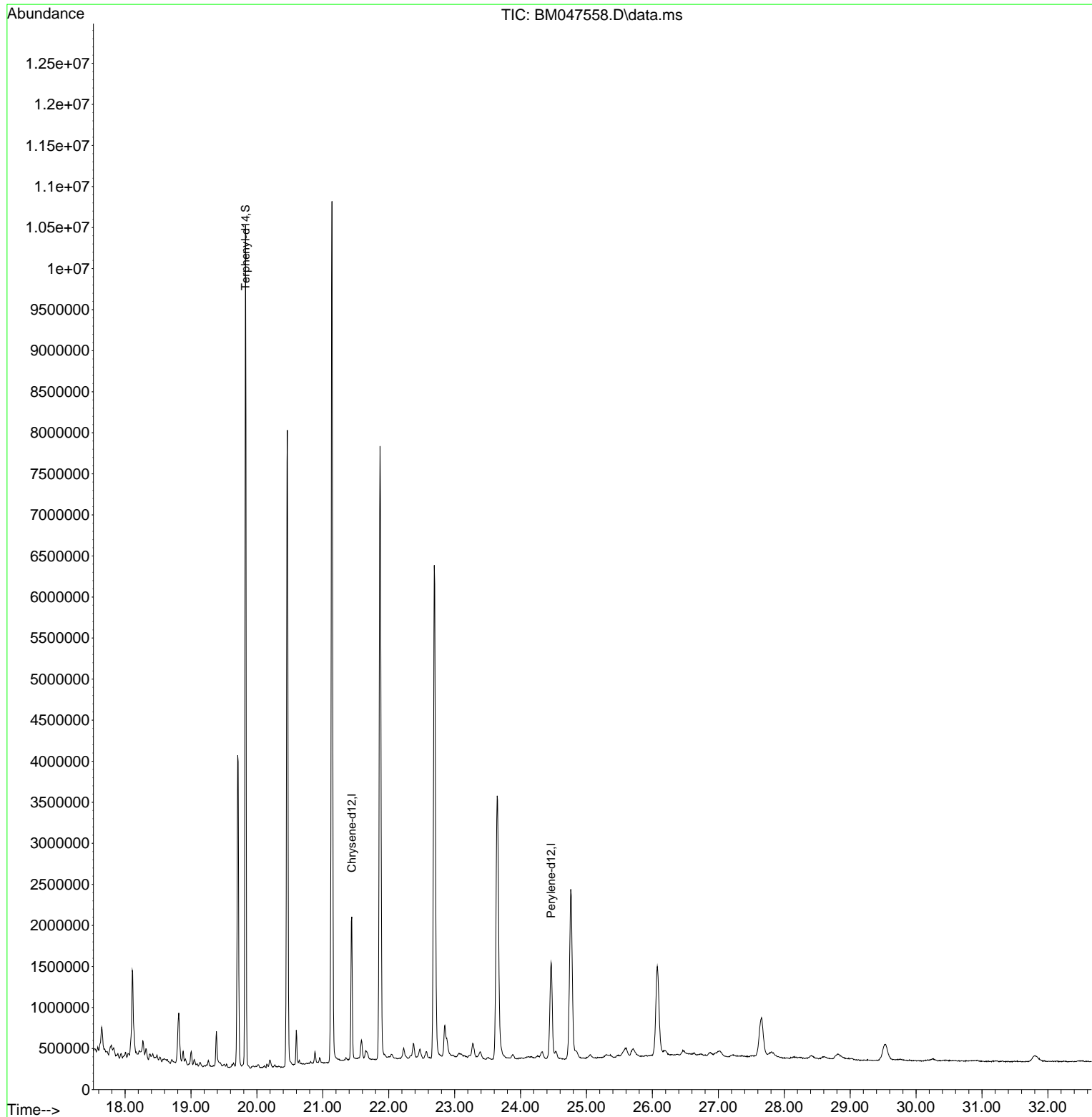
Quant Time: Sep 18 17:43:24 2024  
 Quant Method : Z:\svoasrv\HPCHEM1\BNA\_M\Methods\8270-BM091424.M  
 Quant Title : ASP BNA STANDARDS FOR 5 POINT CALIBRATION  
 QLast Update : Sun Sep 15 08:56:37 2024  
 Response via : Initial Calibration

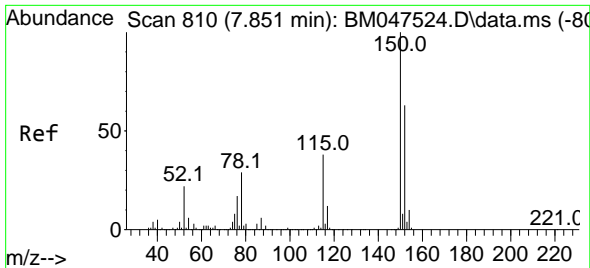


Data Path : Z:\svoasrv\HPCHEM1\BNA\_M\Data\BM091824\  
Data File : BM047558.D  
Acq On : 18 Sep 2024 16:26  
Operator : RC/JU  
Sample : P4085-03  
Misc :  
ALS Vial : 7 Sample Multiplier: 1

Instrument :  
BNA\_M  
ClientSampleId :  
COMP-2

Quant Time: Sep 18 17:43:24 2024  
Quant Method : Z:\svoasrv\HPCHEM1\BNA\_M\Methods\8270-BM091424.M  
Quant Title : ASP BNA STANDARDS FOR 5 POINT CALIBRATION  
QLast Update : Sun Sep 15 08:56:37 2024  
Response via : Initial Calibration

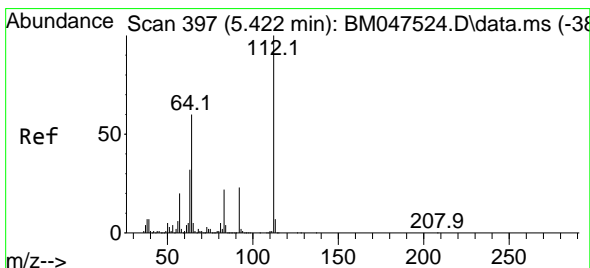
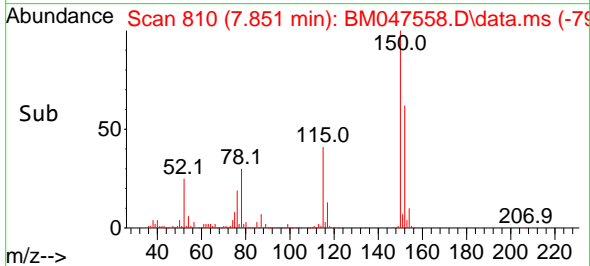
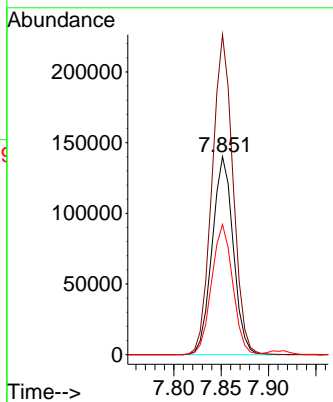
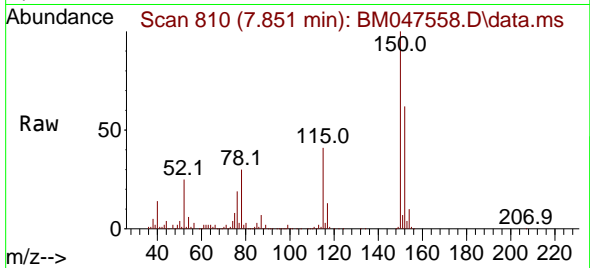




#1  
 1,4-Dichlorobenzene-d4  
 Concen: 20.000 ng  
 RT: 7.851 min Scan# 810  
 Delta R.T. 0.000 min  
 Lab File: BM047558.D  
 Acq: 18 Sep 2024 16:26

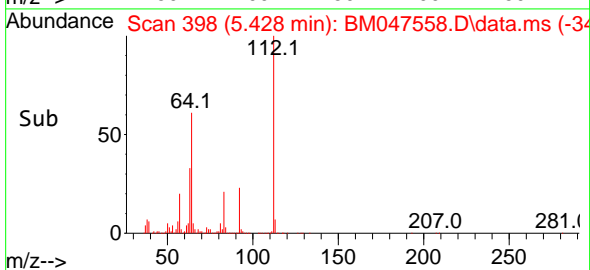
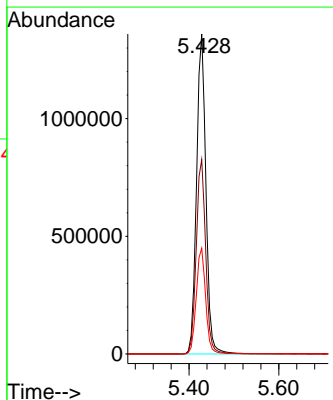
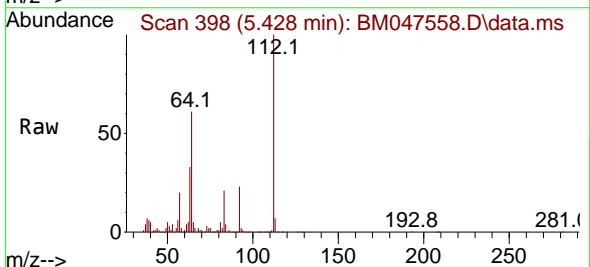
Instrument :  
 BNA\_M  
 ClientSampleId :  
 COMP-2

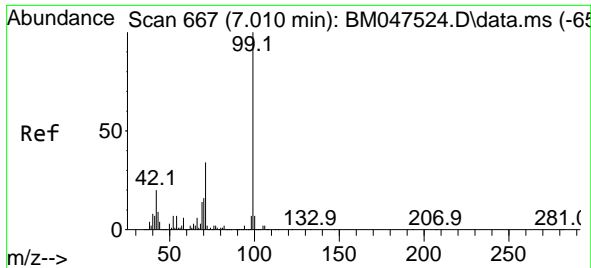
Tgt Ion:152 Resp: 216850  
 Ion Ratio Lower Upper  
 152 100  
 150 161.5 126.8 190.2  
 115 65.7 47.8 71.8



#5  
 2-Fluorophenol  
 Concen: 144.779 ng  
 RT: 5.428 min Scan# 398  
 Delta R.T. 0.006 min  
 Lab File: BM047558.D  
 Acq: 18 Sep 2024 16:26

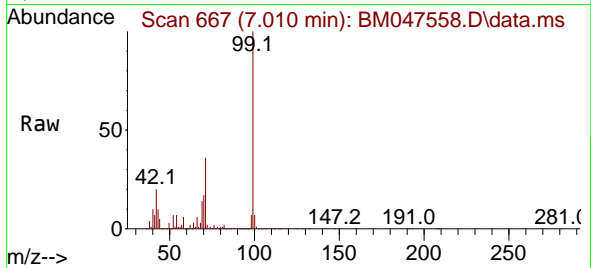
Tgt Ion:112 Resp: 1971800  
 Ion Ratio Lower Upper  
 112 100  
 64 60.8 48.2 72.4  
 63 33.1 26.0 39.0



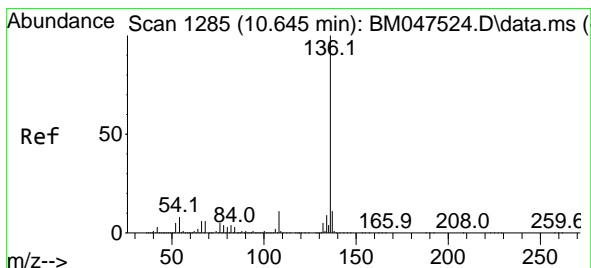
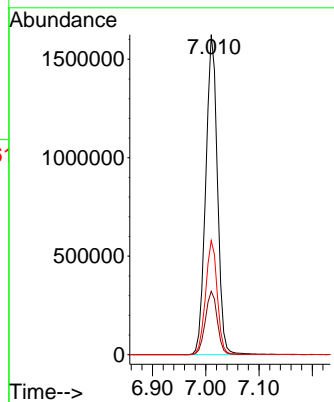
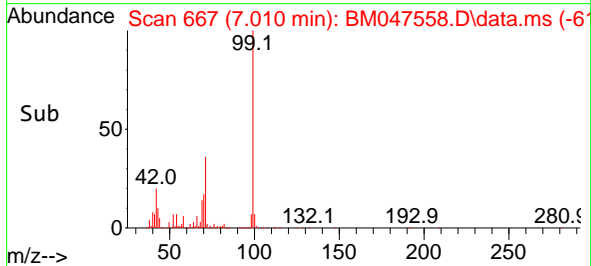


#7  
Phenol-d6  
Concen: 129.057 ng  
RT: 7.010 min Scan# 667  
Delta R.T. 0.000 min  
Lab File: BM047558.D  
Acq: 18 Sep 2024 16:26

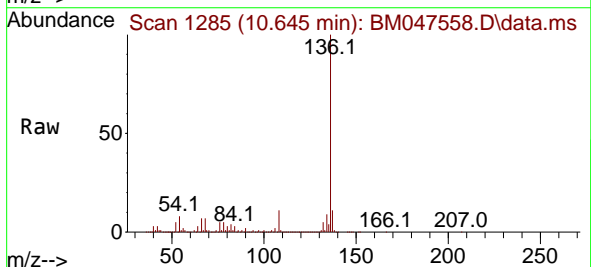
Instrument :  
BNA\_M  
ClientSampleId :  
COMP-2



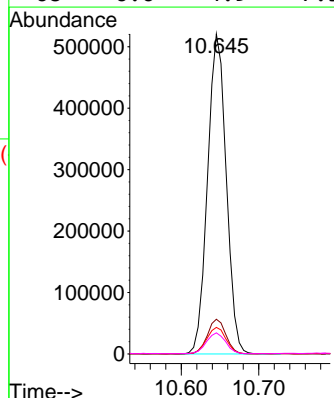
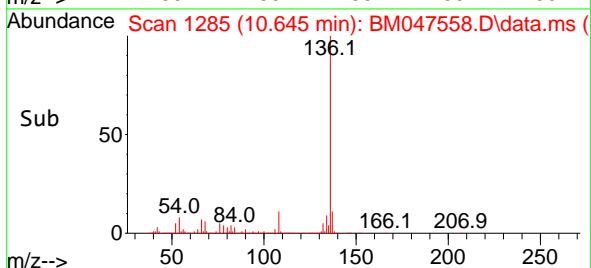
Tgt Ion: 99 Resp: 2475310  
Ion Ratio Lower Upper  
99 100  
42 19.8 15.8 23.8  
71 35.7 27.6 41.4

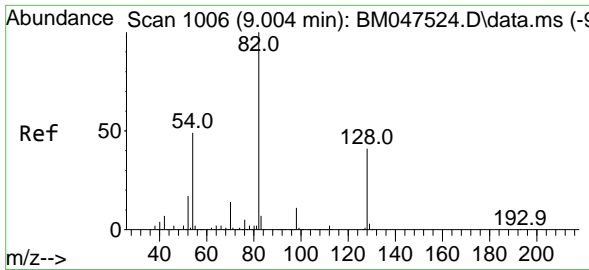


#21  
Naphthalene-d8  
Concen: 20.000 ng  
RT: 10.645 min Scan# 1285  
Delta R.T. 0.000 min  
Lab File: BM047558.D  
Acq: 18 Sep 2024 16:26



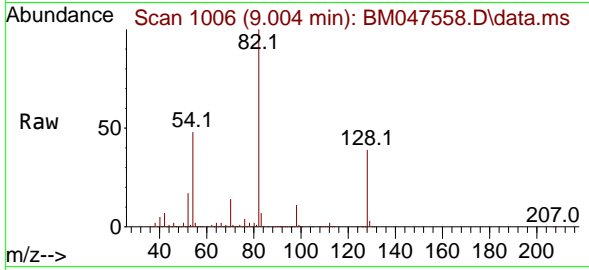
Tgt Ion: 136 Resp: 871345  
Ion Ratio Lower Upper  
136 100  
137 10.8 9.0 13.6  
54 8.3 6.6 9.8  
68 6.6 4.9 7.3



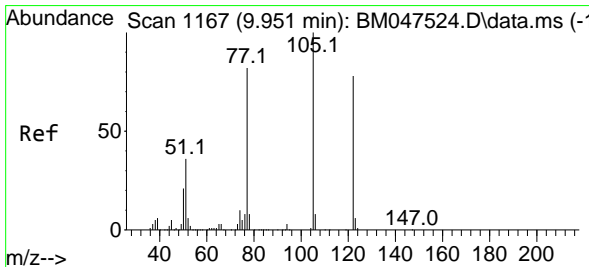
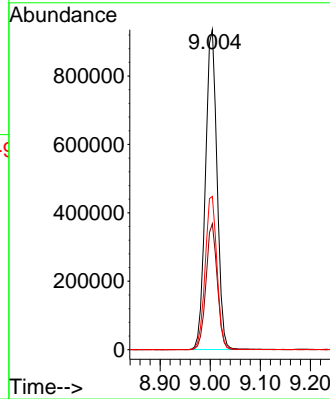
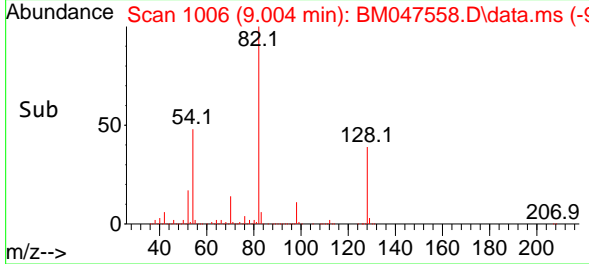


#23  
 Nitrobenzene-d5  
 Concen: 86.425 ng  
 RT: 9.004 min Scan# 1006  
 Delta R.T. 0.000 min  
 Lab File: BM047558.D  
 Acq: 18 Sep 2024 16:26

Instrument :  
 BNA\_M  
 ClientSampleId :  
 COMP-2

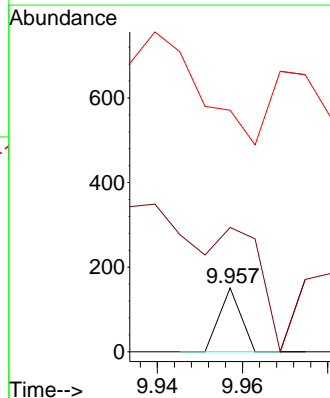
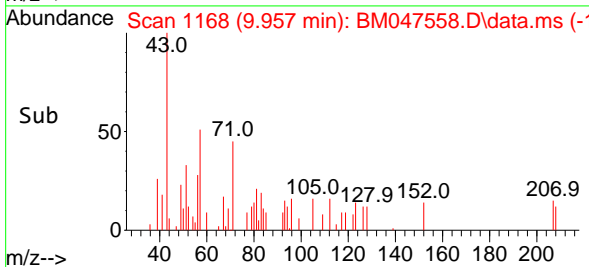
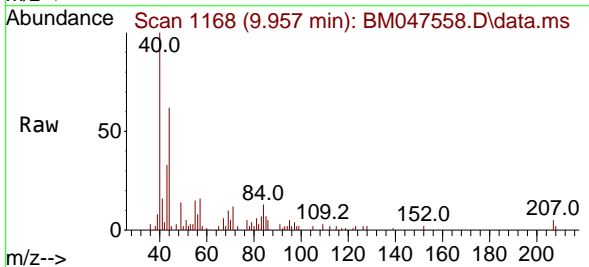


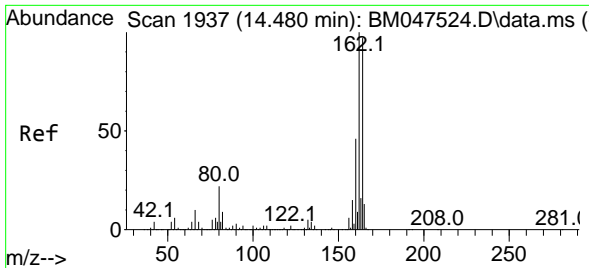
Tgt Ion: 82 Resp: 1504737  
 Ion Ratio Lower Upper  
 82 100  
 128 39.4 33.0 49.4  
 54 47.9 39.3 58.9



#32  
 Benzoic acid  
 Concen: 6.704 ng  
 RT: 9.957 min Scan# 1168  
 Delta R.T. 0.006 min  
 Lab File: BM047558.D  
 Acq: 18 Sep 2024 16:26

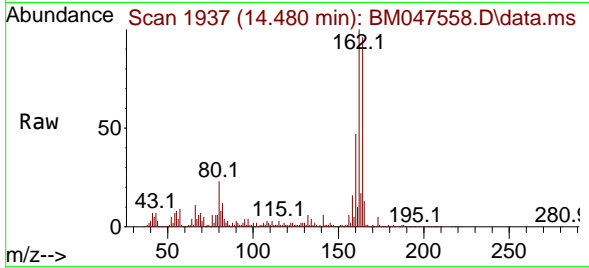
Tgt Ion: 122 Resp: 53  
 Ion Ratio Lower Upper  
 122 100  
 105 194.7 104.7 144.7#  
 77 378.1 83.4 123.4#





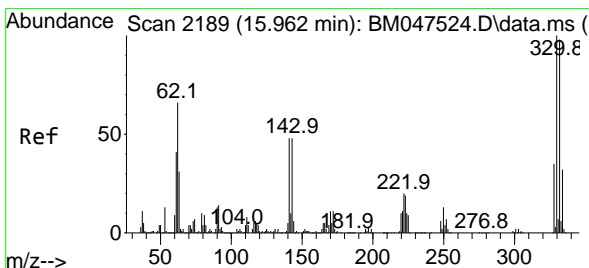
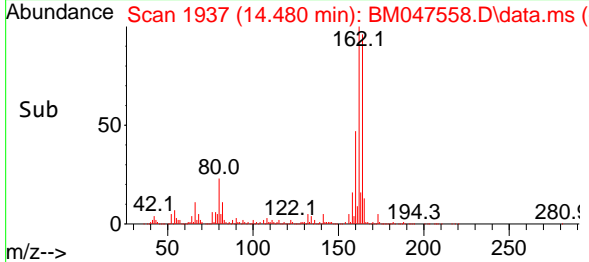
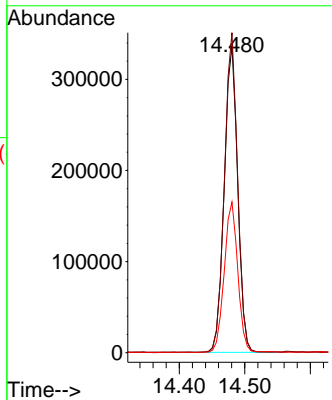
#39  
 Acenaphthene-d10  
 Concen: 20.000 ng  
 RT: 14.480 min Scan# 1937  
 Delta R.T. 0.000 min  
 Lab File: BM047558.D  
 Acq: 18 Sep 2024 16:26

Instrument :  
 BNA\_M  
 ClientSampleId :  
 COMP-2

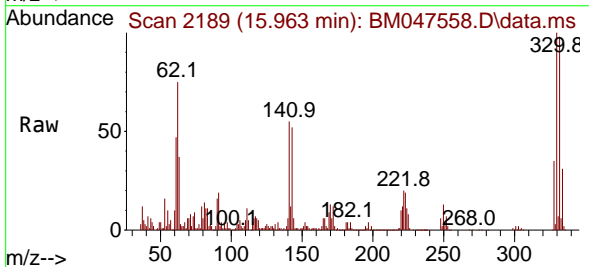


Tgt Ion:164 Resp: 477658  

Ion	Ratio	Lower	Upper
164	100		
162	104.3	82.2	123.2
160	49.2	38.2	57.2

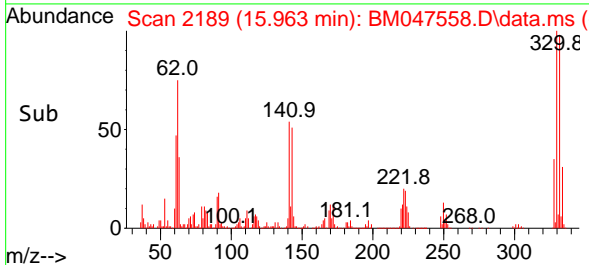
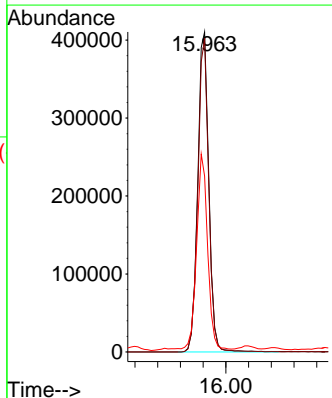


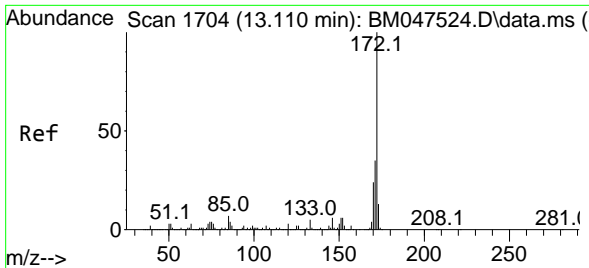
#42  
 2,4,6-Tribromophenol  
 Concen: 120.570 ng  
 RT: 15.963 min Scan# 2189  
 Delta R.T. 0.000 min  
 Lab File: BM047558.D  
 Acq: 18 Sep 2024 16:26



Tgt Ion:330 Resp: 556670  

Ion	Ratio	Lower	Upper
330	100		
332	96.3	76.9	115.3
141	59.8	42.2	63.2

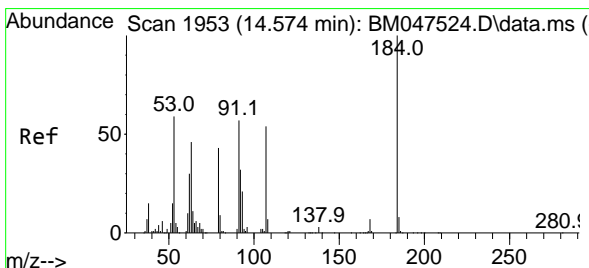
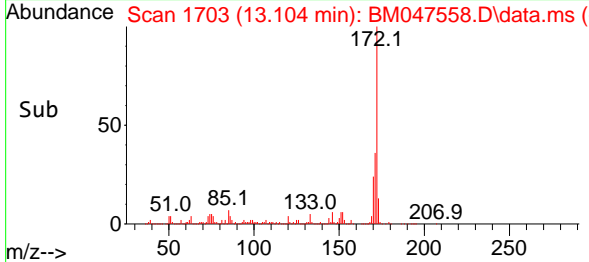
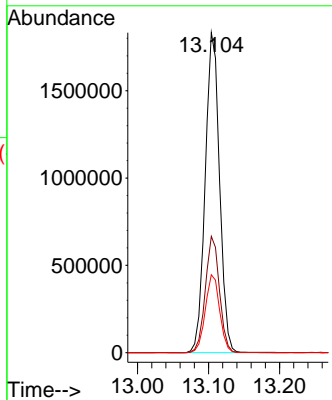
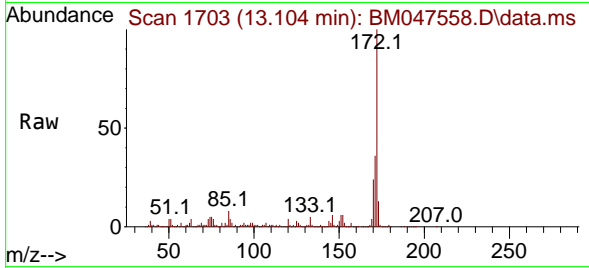




#45  
 2-Fluorobiphenyl  
 Concen: 74.276 ng  
 RT: 13.104 min Scan# 1  
 Delta R.T. -0.006 min  
 Lab File: BM047558.D  
 Acq: 18 Sep 2024 16:26

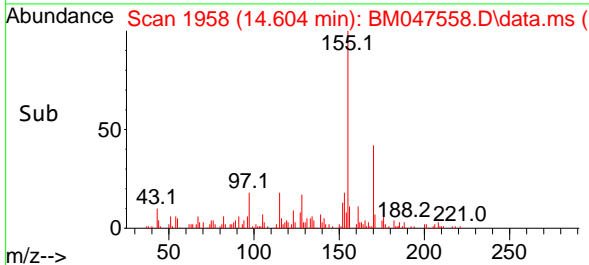
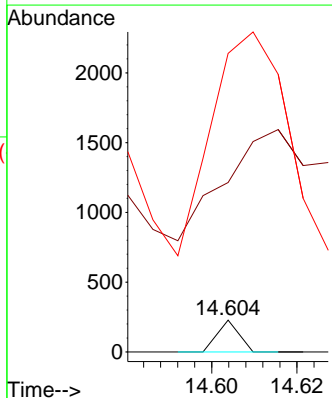
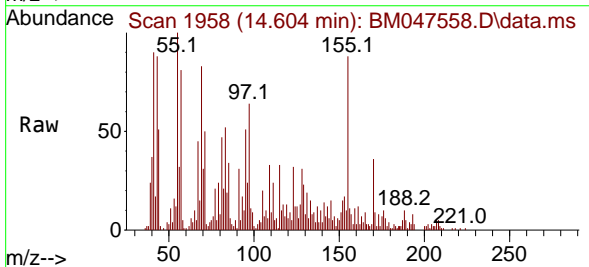
Instrument :  
 BNA\_M  
 ClientSampleId :  
 COMP-2

Tgt Ion:172 Resp: 2575528  
 Ion Ratio Lower Upper  
 172 100  
 171 36.4 28.2 42.2  
 170 24.4 19.4 29.0

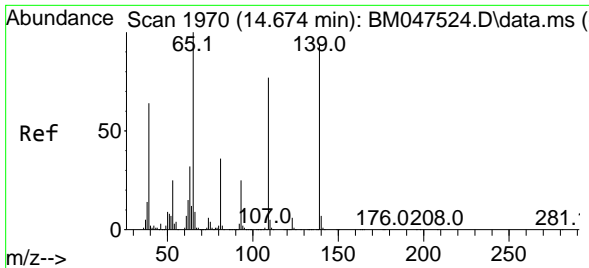


#54  
 2,4-Dinitrophenol  
 Concen: 2.591 ng  
 RT: 14.604 min Scan# 1958  
 Delta R.T. 0.030 min  
 Lab File: BM047558.D  
 Acq: 18 Sep 2024 16:26

Tgt Ion:184 Resp: 80  
 Ion Ratio Lower Upper  
 184 100  
 63 532.5 69.4 104.0#  
 154 938.2 60.4 90.6#



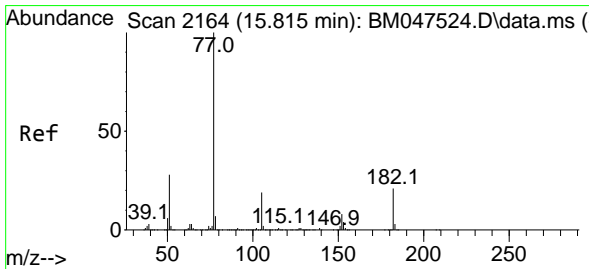
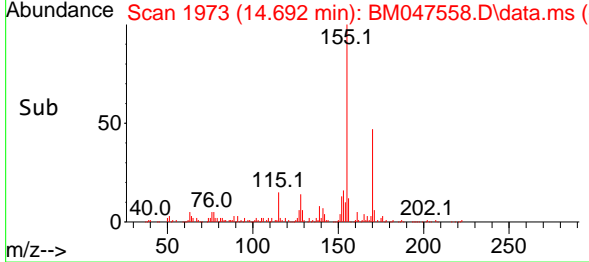
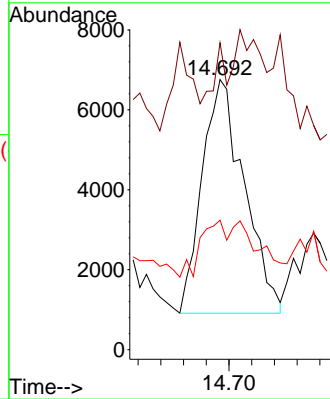
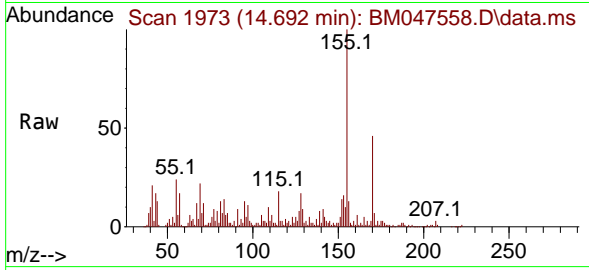




#56  
 4-Nitrophenol  
 Concen: 2.398 ng  
 RT: 14.692 min Scan# 1973  
 Delta R.T. 0.018 min  
 Lab File: BM047558.D  
 Acq: 18 Sep 2024 16:26

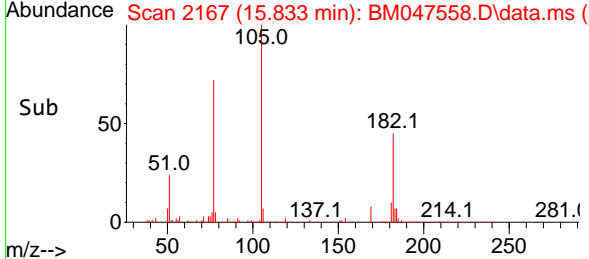
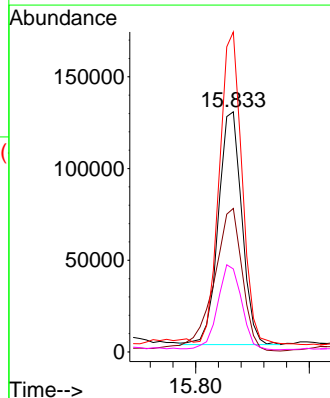
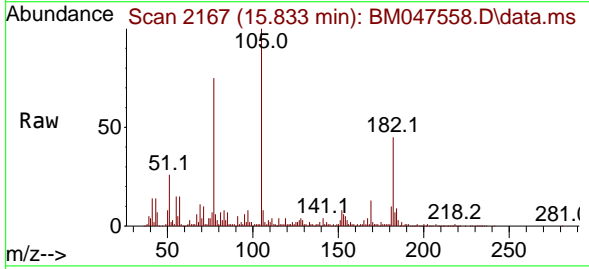
Instrument :  
 BNA\_M  
 ClientSampleId :  
 COMP-2

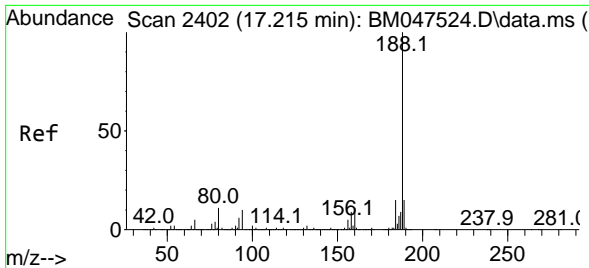
Tgt Ion:139 Resp: 15074  
 Ion Ratio Lower Upper  
 139 100  
 109 113.6 62.0 102.0#  
 65 47.9 87.0 127.0#



#63  
 Azobenzene  
 Concen: 4.788 ng  
 RT: 15.833 min Scan# 2167  
 Delta R.T. 0.018 min  
 Lab File: BM047558.D  
 Acq: 18 Sep 2024 16:26

Tgt Ion: 77 Resp: 182676  
 Ion Ratio Lower Upper  
 77 100  
 182 59.8 1.2 41.2#  
 105 133.3 0.0 39.4#  
 51 34.6 7.9 47.9



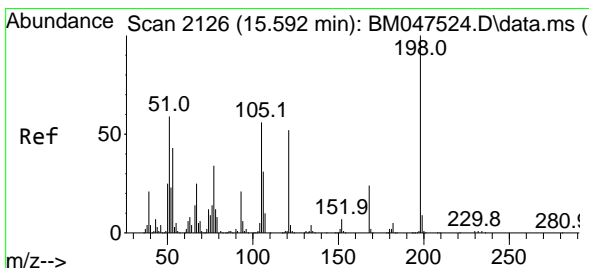
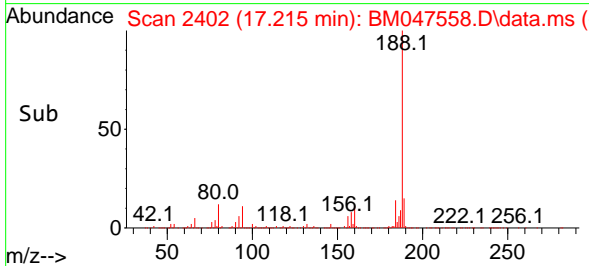
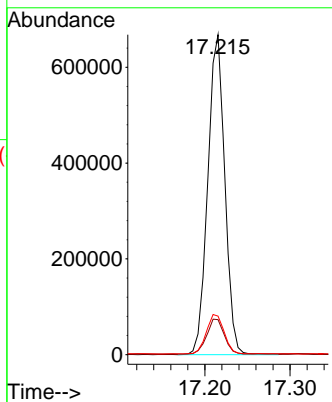
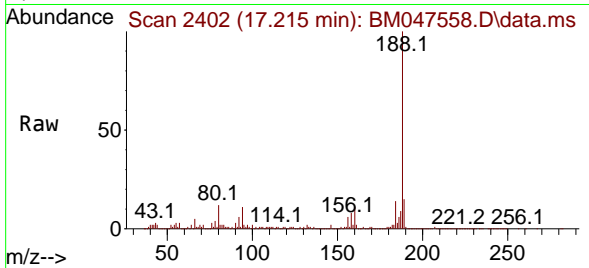


#64  
 Phenanthrene-d10  
 Concen: 20.000 ng  
 RT: 17.215 min Scan# 24  
 Delta R.T. 0.000 min  
 Lab File: BM047558.D  
 Acq: 18 Sep 2024 16:26

Instrument :  
 BNA\_M  
 ClientSampleId :  
 COMP-2

Tgt Ion:188 Resp: 926931

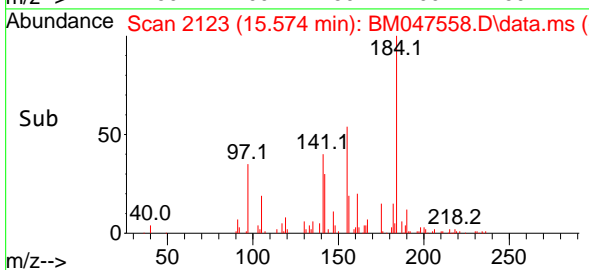
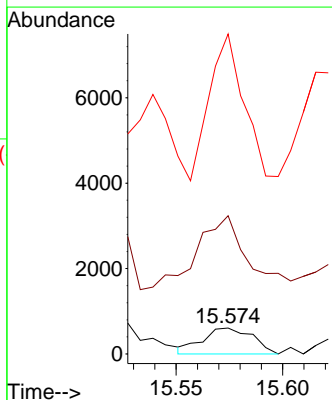
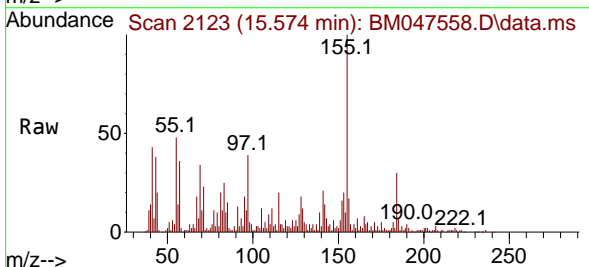
Ion	Ratio	Lower	Upper
188	100		
94	10.9	8.4	12.6
80	12.0	9.1	13.7

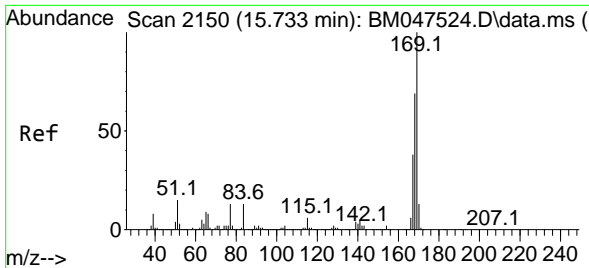


#65  
 4,6-Dinitro-2-methylphenol  
 Concen: 7.350 ng  
 RT: 15.574 min Scan# 2123  
 Delta R.T. -0.018 min  
 Lab File: BM047558.D  
 Acq: 18 Sep 2024 16:26

Tgt Ion:198 Resp: 989

Ion	Ratio	Lower	Upper
198	100		
51	533.4	41.5	81.5#
105	1234.8	36.4	76.4#

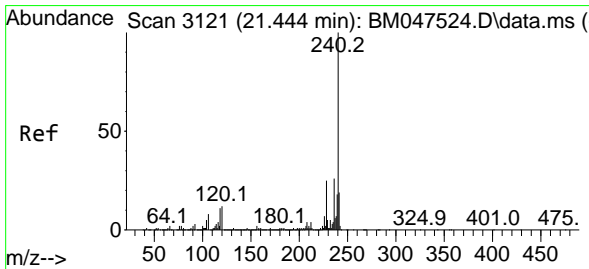
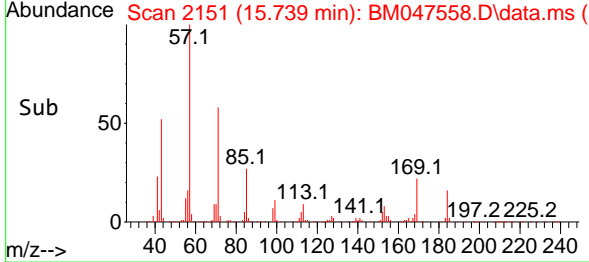
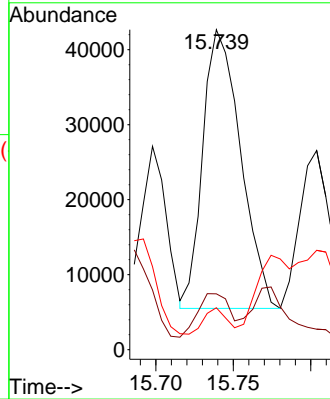
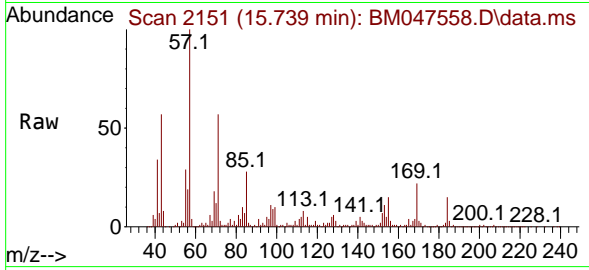




#66  
 n-Nitrosodiphenylamine  
 Concen: 2.224 ng  
 RT: 15.739 min Scan# 2150  
 Delta R.T. 0.006 min  
 Lab File: BM047558.D  
 Acq: 18 Sep 2024 16:26

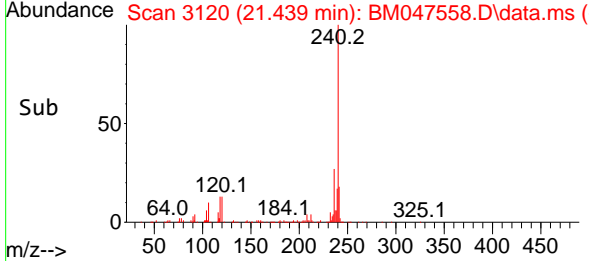
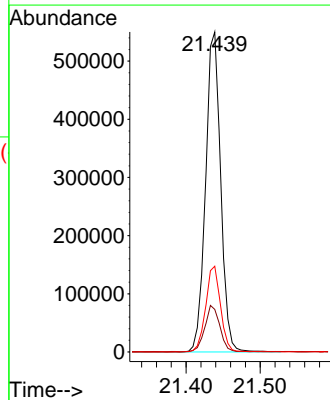
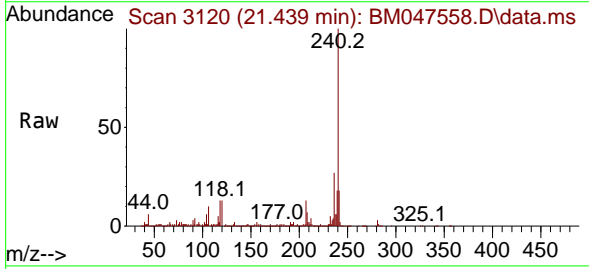
Instrument : BNA\_M  
 ClientSampleId : COMP-2

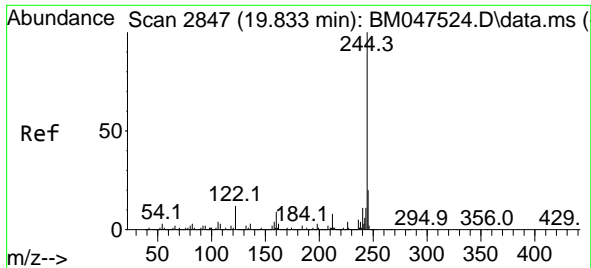
Tgt Ion	Resp	Lower	Upper
169	63053	100	100
168	17.4	55.3	82.9#
167	13.1	30.5	45.7#



#76  
 Chrysene-d12  
 Concen: 20.000 ng  
 RT: 21.439 min Scan# 3120  
 Delta R.T. -0.005 min  
 Lab File: BM047558.D  
 Acq: 18 Sep 2024 16:26

Tgt Ion	Resp	Lower	Upper
240	778694	100	100
120	13.3	9.6	14.4
236	26.8	20.9	31.3

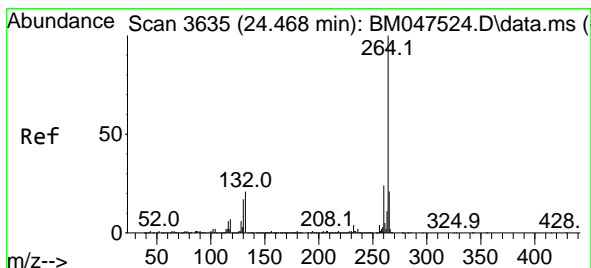
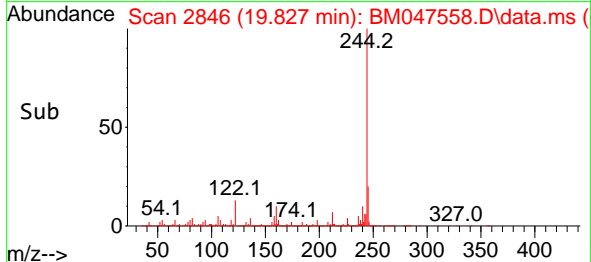
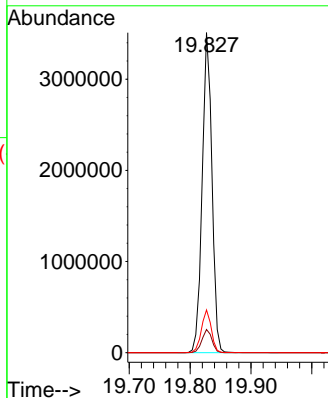
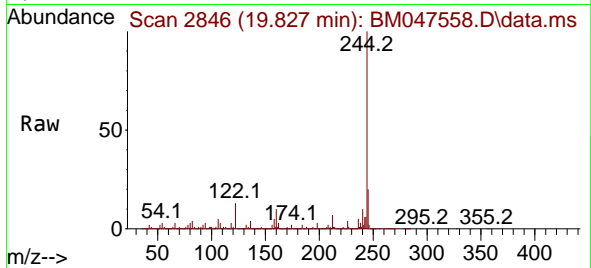




#79  
 Terphenyl-d14  
 Concen: 89.968 ng  
 RT: 19.827 min Scan# 21  
 Delta R.T. -0.006 min  
 Lab File: BM047558.D  
 Acq: 18 Sep 2024 16:26

Instrument :  
 BNA\_M  
 ClientSampleId :  
 COMP-2

Tgt Ion:244 Resp: 3909609  
 Ion Ratio Lower Upper  
 244 100  
 212 7.3 6.2 9.2  
 122 13.3 9.6 14.4



#86  
 Perylene-d12  
 Concen: 20.000 ng  
 RT: 24.462 min Scan# 3634  
 Delta R.T. -0.006 min  
 Lab File: BM047558.D  
 Acq: 18 Sep 2024 16:26

Tgt Ion:264 Resp: 928222  
 Ion Ratio Lower Upper  
 264 100  
 260 24.2 18.9 28.3  
 265 21.2 17.4 26.2

