

Data Path : Z:\HPCHEM1\BNA M\DATA\BM092117\
 Data File : BM011655.D
 Acq On : 21 Sep 2017 15:59
 Operator : SJ/JU
 Sample : I5284-04
 Misc :
 ALS Vial : 7 Sample Multiplier: 1

Instrument :
 BNA_M
 ClientSampleId :

Quant Time: Sep 22 03:51:29 2017
 Quant Method : Z:\HPCHEM1\BNA M\METHODS\SOM-EPA-BM090817MA.M
 Quant Title : SVOA CALIBRATION
 QLast Update : Fri Sep 22 03:47:29 2017
 Response via : Initial Calibration

Internal Standards	R.T.	QIon	Response	Conc	Units	Dev(Min)
1) 1,4-Dichlorobenzene-d4	7.96	152	222403	20.00	ng/ul	0.00
18) Naphthalene-d8	10.77	136	1006226	20.00	ng/ul	0.00
36) Acenaphthene-d10	14.59	164	582215	20.00	ng/ul	0.00
62) Phenanthrene-d10	17.33	188	1306100	20.00	ng/ul	0.00
78) Chrysene-d12	21.50	240	1462402	20.00	ng/ul	0.00
86) Perylene-d12	23.87	264	1468545	20.00	ng/ul	0.00

System Monitoring Compounds

3) 1,4-Dioxane-d8	3.39	96	3864	0.78	ng/uL	0.00
5) Phenol-d5	7.12	99	86141	4.03	ng/ul	0.00
7) Bis-(2-Chloroethyl)ether-d	7.29	67	99102	6.89	ng/ul	0.00
9) 2-Chlorophenol-d4	7.49	132	77459	4.81	ng/ul	0.00
13) 4-Methylphenol-d8	8.66	113	70074	4.20	ng/ul	0.00
19) Nitrobenzene-d5	9.13	128	46757	6.12	ng/ul	0.00
22) 2-Nitrophenol-d4	9.85	143	23607	2.97	ng/ul	0.00
26) 2,4-Dichlorophenol-d3	10.39	165	50901	3.18	ng/ul	0.00
29) 4-Chloroaniline-d4	10.95	131	3167	0.18	ng/ul	0.05
44) Dimethylphthalate-d6	13.99	166	247090	5.02	ng/ul	0.00
47) Acenaphthylene-d8	14.29	160	376649	6.33	ng/ul	0.00
52) 4-Nitrophenol-d4	14.80	143	112	0.01	ng/ul	0.03
58) Fluorene-d10	15.58	176	307473	7.21	ng/ul	0.00
63) 4,6-Dinitro-2-methylphenol	15.69	200	7703	1.01	ng/ul	0.00
71) Anthracene-d10	17.43	188	459312	7.14	ng/ul	0.00
79) Pyrene-d10	19.72	212	560501	8.19	ng/ul	0.00
90) Benzo(a)pyrene-d12	23.71	264	504870	7.21	ng/ul	0.00

Target Compounds

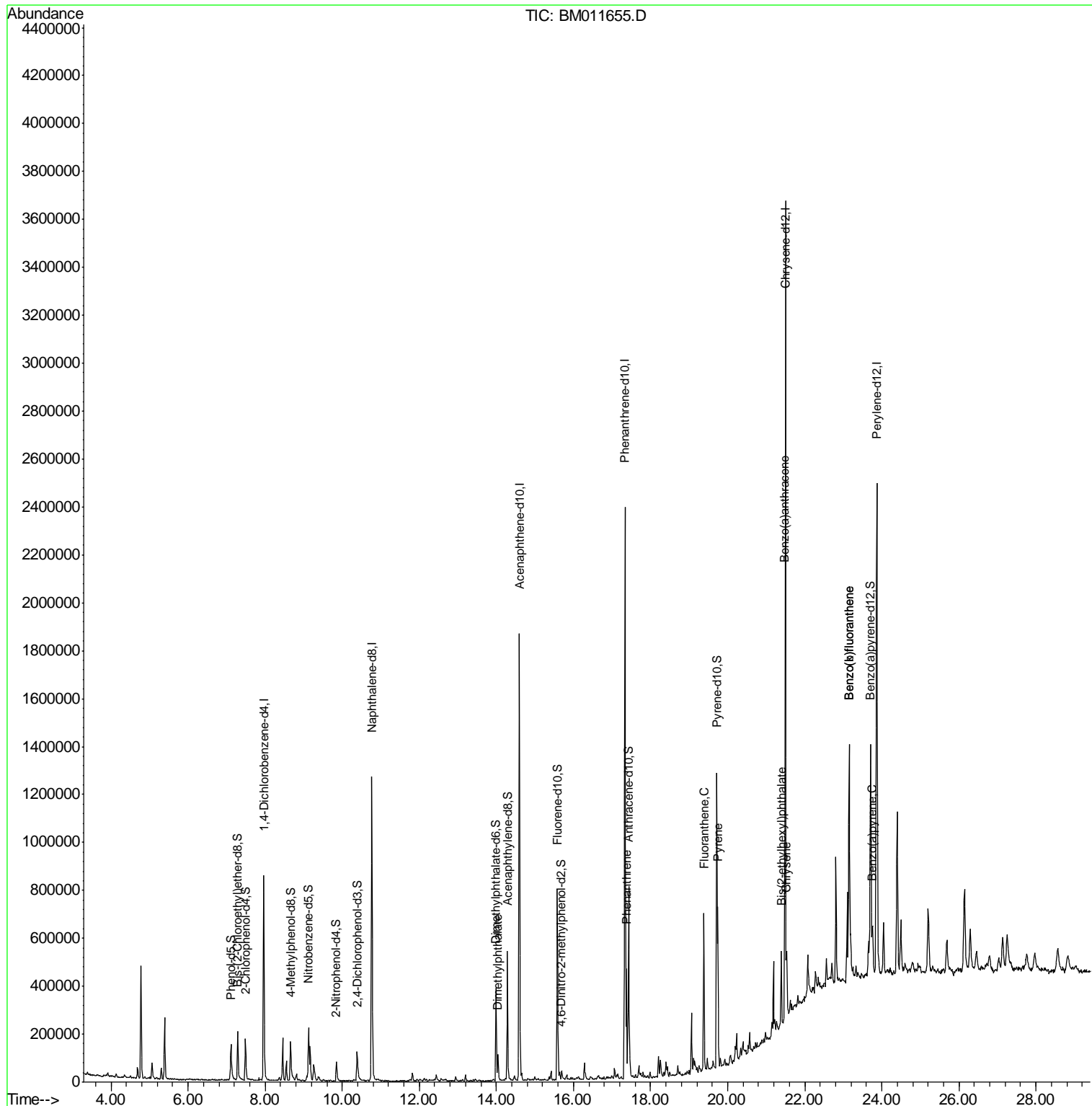
				Ovalue	
45) Dimethylphthalate	14.04	163	69270	1.470	ng/ul# 98
70) Phenanthrene	17.37	178	246316	3.383	ng/ul 100
77) Fluoranthene	19.38	202	383297	5.119	ng/ul# 90
80) Pyrene	19.74	202	356851	4.182	ng/ul# 89
83) Benzo(a)anthracene	21.48	228	181400	2.253	ng/ul 97
84) Bis(2-ethylhexyl)phthalate	21.39	149	85816	1.424	ng/ul# 93
85) Chrysene	21.53	228	179565	2.460	ng/ul 98
88) Benzo(b)fluoranthene	23.14	252	226125	2.560	ng/ul# 88
89) Benzo(k)fluoranthene	23.14	252	226125	2.665	ng/ul# 87
91) Benzo(a)pyrene	23.76	252	132774	1.592	ng/ul# 91

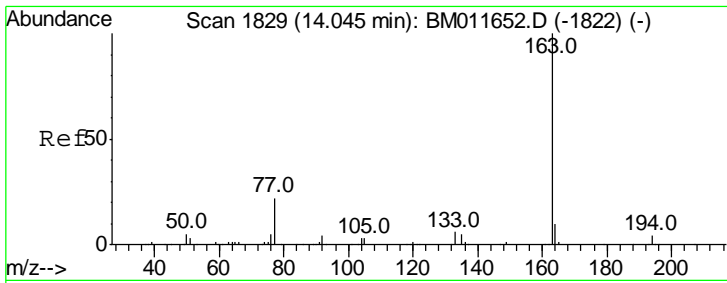
(#) = qualifier out of range (m) = manual integration (+) = signals summed

Data Path : Z:\HPCHEM1\BNA M\DATA\BM092117\
 Data File : BM011655.D
 Acq On : 21 Sep 2017 15:59
 Operator : SJ/JU
 Sample : I5284-04
 Misc :
 ALS Vial : 7 Sample Multiplier: 1

Instrument :
 BNA_M
 ClientSampled :

Quant Time: Sep 22 03:51:29 2017
 Quant Method : Z:\HPCHEM1\BNA M\METHODS\SOM-EPA-BM090817MA.M
 Quant Title : SVOA CALIBRATION
 QLast Update : Fri Sep 22 03:47:29 2017
 Response via : Initial Calibration

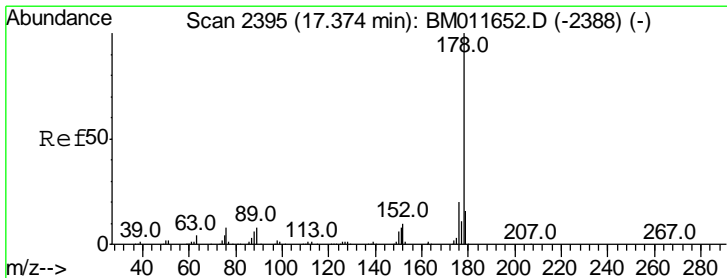
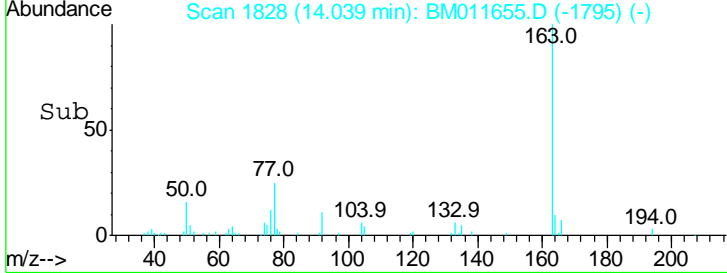
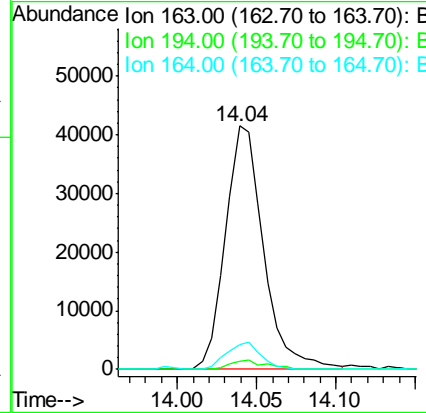
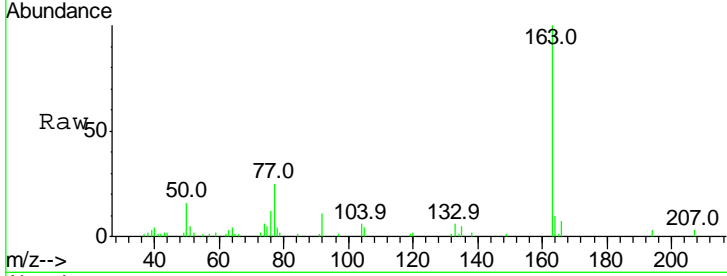




#45
 Dimethylphthalate
 Concen: 1.470 ng/ul
 RT: 14.04 min Scan# 1828
 Delta R.T. -0.01 min
 Lab File: BM011655.D
 Acq: 21 Sep 2017 15:59

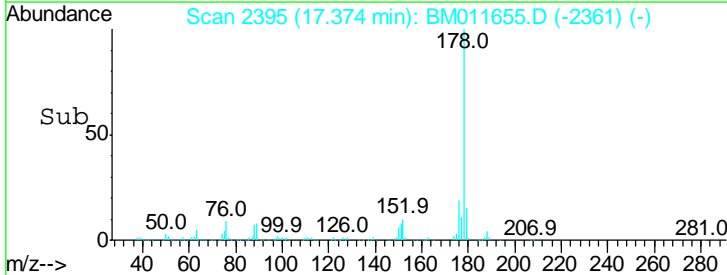
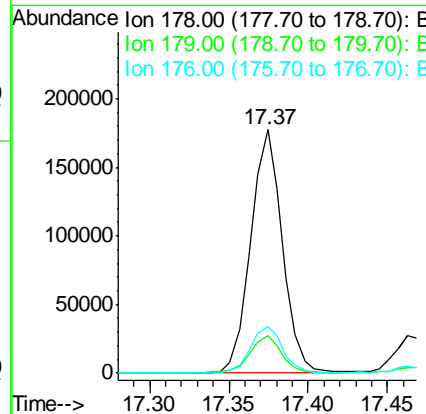
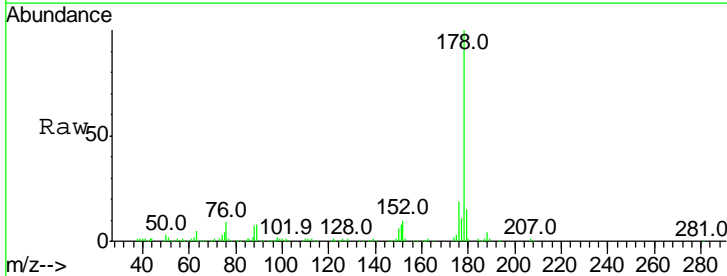
Instrument :
 BNA_M
 ClientSampleID :

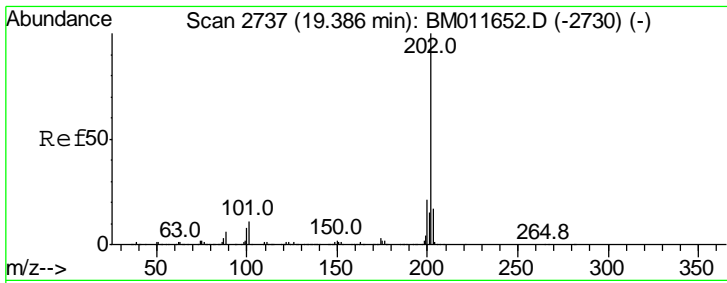
Tgt Ion	Resp	Lower	Upper
163	100		
194	3.2	4.0	6.0#
164	10.1	8.4	12.6



#70
 Phenanthrene
 Concen: 3.383 ng/ul
 RT: 17.37 min Scan# 2395
 Delta R.T. 0.00 min
 Lab File: BM011655.D
 Acq: 21 Sep 2017 15:59

Tgt Ion	Resp	Lower	Upper
178	100		
179	15.3	12.3	18.5
176	19.1	15.4	23.0

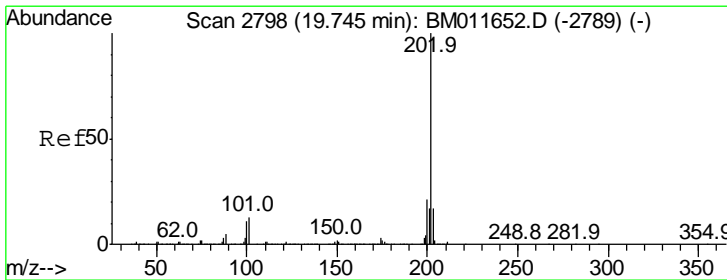
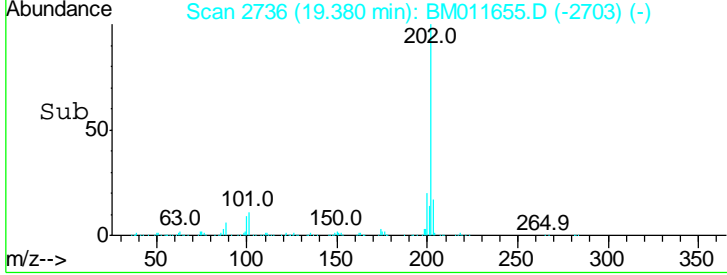
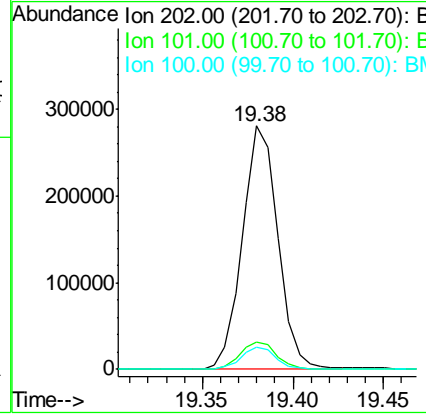
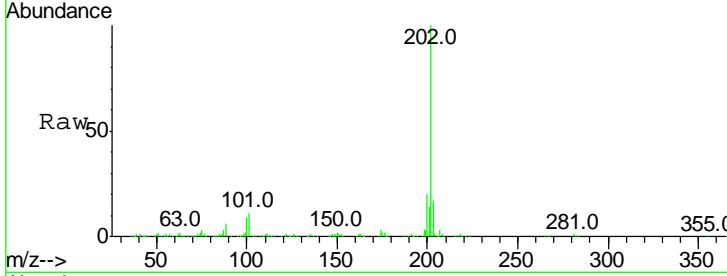




#77
 Fluoranthene
 Concen: 5.119 ng/ul
 RT: 19.38 min Scan# 2736
 Delta R.T. -0.01 min
 Lab File: BM011655.D
 Acq: 21 Sep 2017 15:59

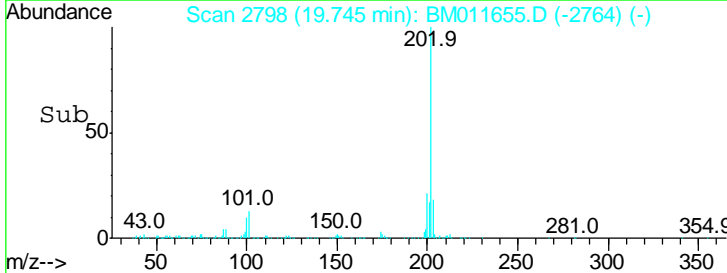
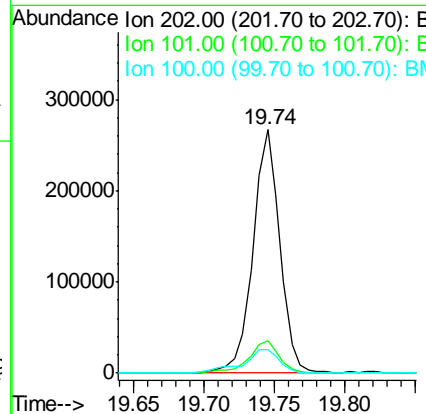
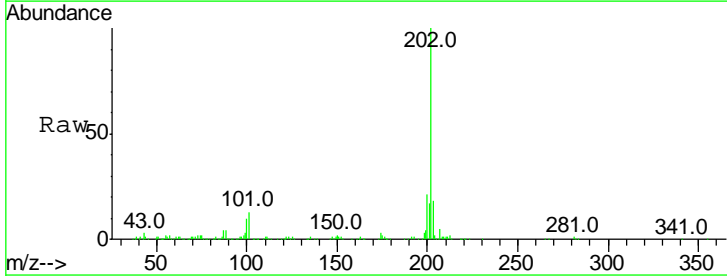
Instrument :
 BNA_M
 ClientSampled :

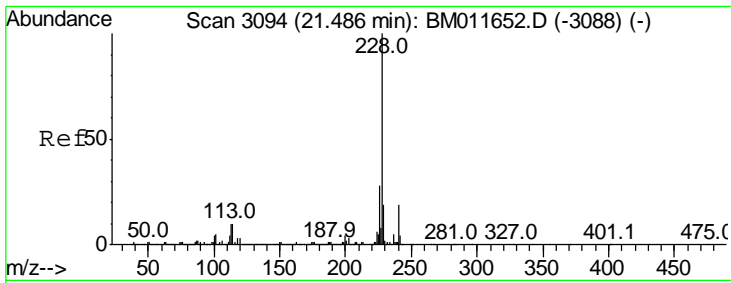
Tgt Ion	Ratio	Lower	Upper
202	100		
101	11.3	6.1	9.1#
100	8.9	4.6	7.0#



#80
 Pyrene
 Concen: 4.182 ng/ul
 RT: 19.74 min Scan# 2798
 Delta R.T. 0.00 min
 Lab File: BM011655.D
 Acq: 21 Sep 2017 15:59

Tgt Ion	Ratio	Lower	Upper
202	100		
101	13.2	6.9	10.3#
100	9.9	5.6	8.4#

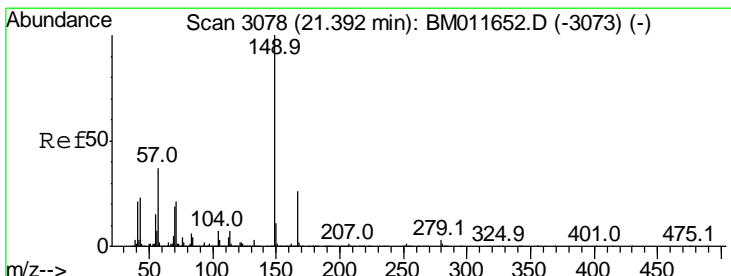
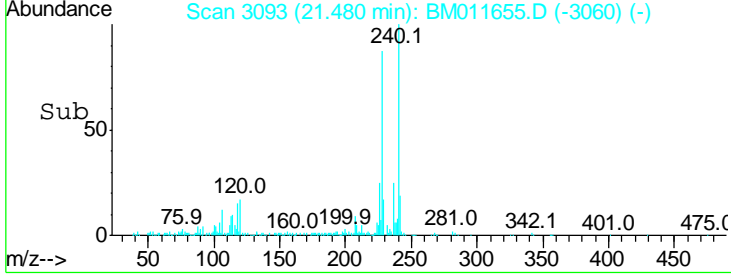
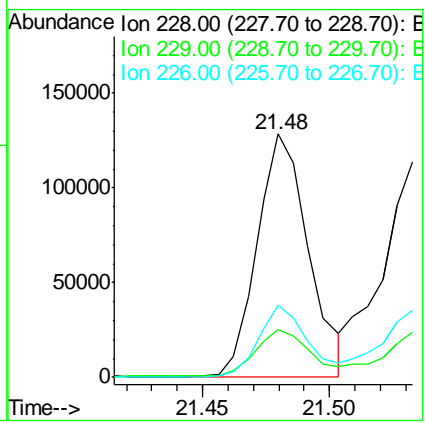
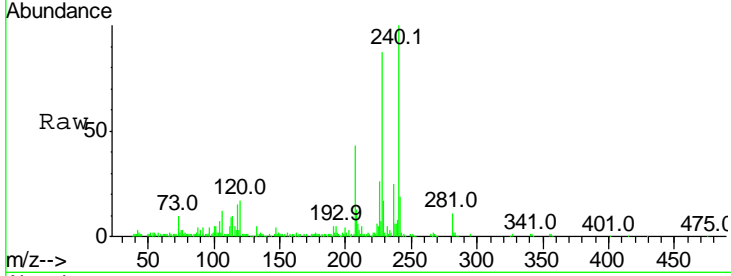




#83
 Benzo(a)anthracene
 Concen: 2.253 ng/ul
 RT: 21.48 min Scan# 3093
 Delta R.T. -0.01 min
 Lab File: BM011655.D
 Acq: 21 Sep 2017 15:59

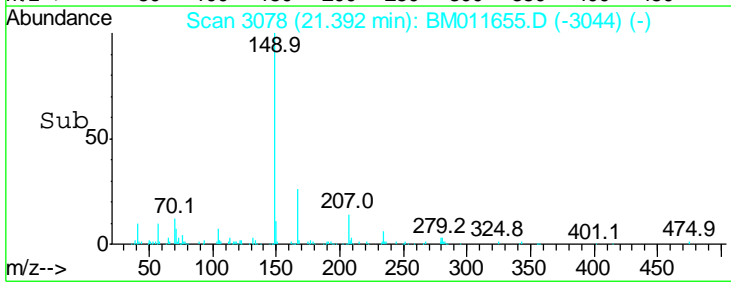
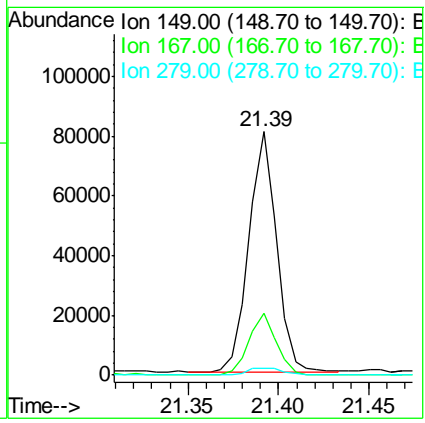
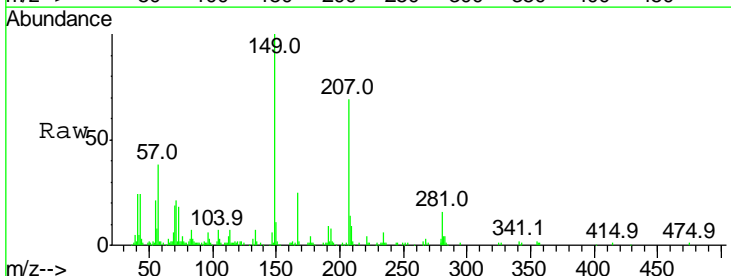
Instrument :
 BNA_M
 ClientSampled :

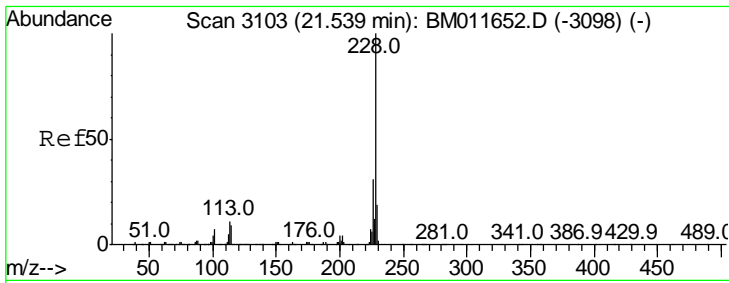
Tgt Ion	Resp	Lower	Upper
228	181400		
229	19.9	16.0	24.0
226	29.6	21.8	32.8



#84
 Bis(2-ethylhexyl)phthalate
 Concen: 1.424 ng/ul
 RT: 21.39 min Scan# 3078
 Delta R.T. 0.00 min
 Lab File: BM011655.D
 Acq: 21 Sep 2017 15:59

Tgt Ion	Resp	Lower	Upper
149	85816		
167	25.4	23.0	34.6
279	2.8	4.3	6.5#

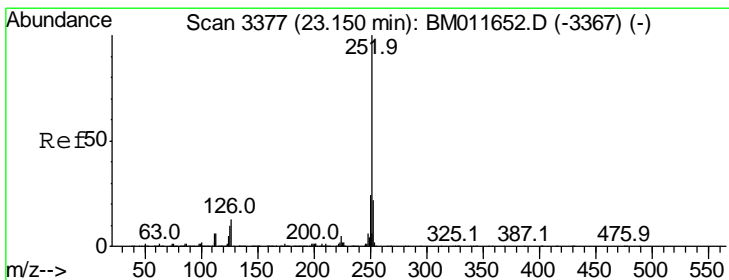
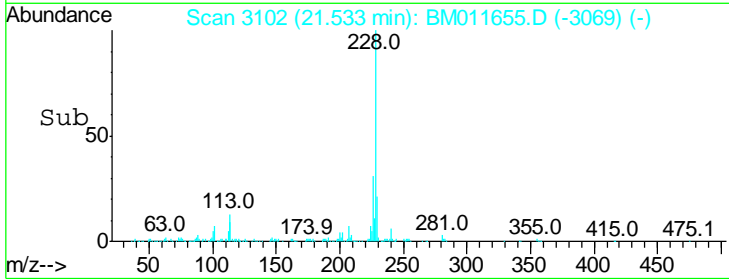
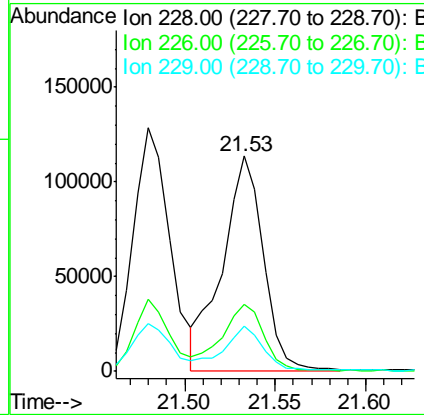
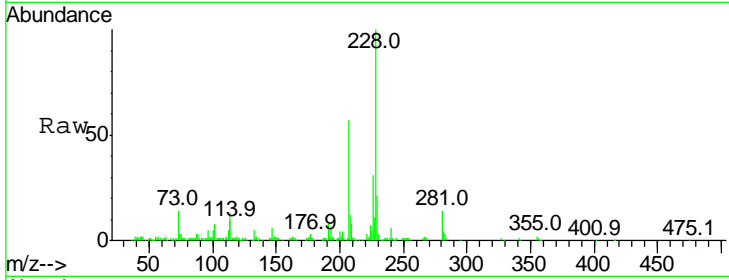




#85
 Chrysene
 Concen: 2.460 ng/ul
 RT: 21.53 min Scan# 3102
 Delta R.T. -0.01 min
 Lab File: BM011655.D
 Acq: 21 Sep 2017 15:59

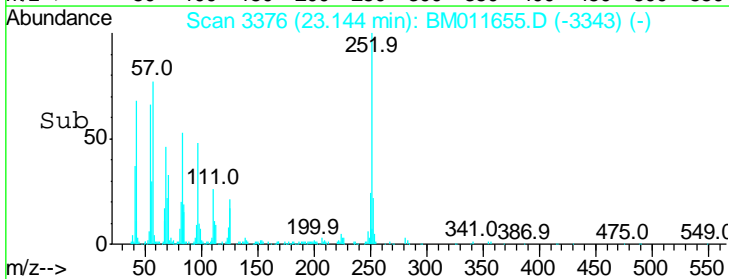
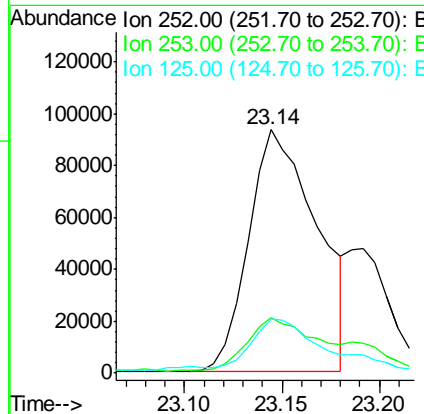
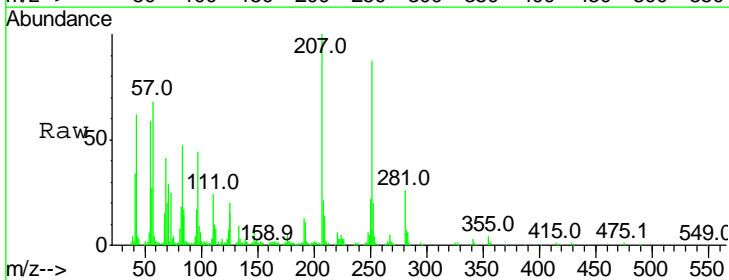
Instrument :
 BNA_M
 ClientSampled :

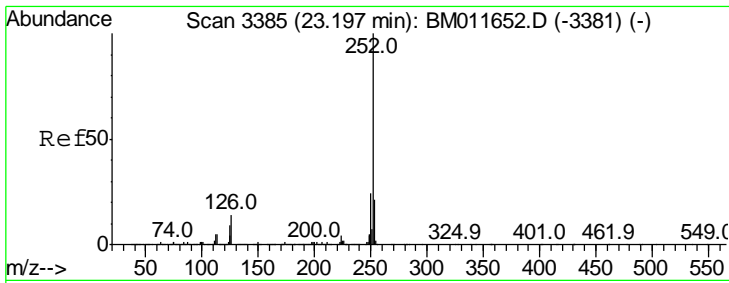
Tgt Ion	Resp	Lower	Upper
228	179565		
226	31.0	24.1	36.1
229	21.2	16.0	24.0



#88
 Benzo(b)fluoranthene
 Concen: 2.560 ng/ul
 RT: 23.14 min Scan# 3376
 Delta R.T. -0.01 min
 Lab File: BM011655.D
 Acq: 21 Sep 2017 15:59

Tgt Ion	Resp	Lower	Upper
252	226125		
253	22.8	17.4	26.0
125	22.4	4.9	7.3#

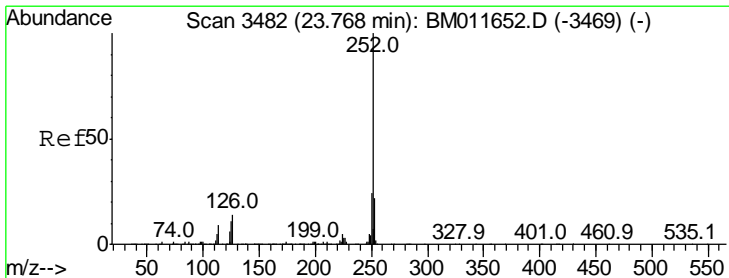
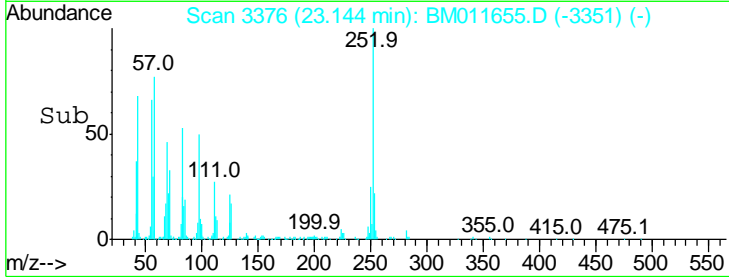
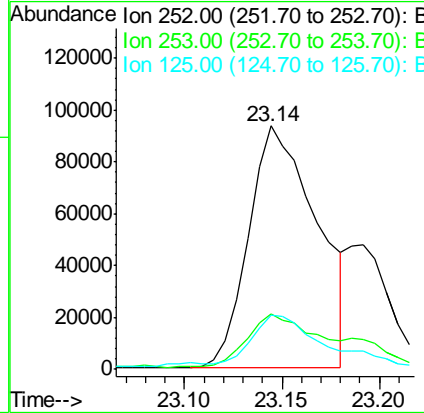
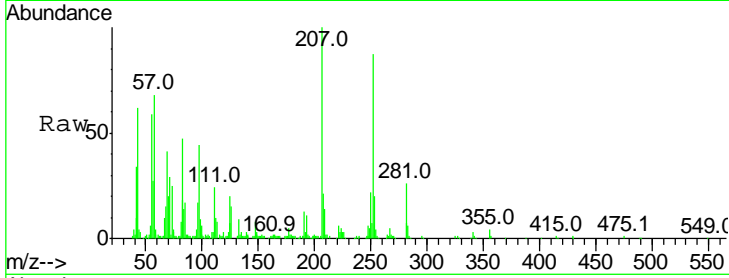




#89
 Benzo(k)fluoranthene
 Concen: 2.665 ng/ul
 RT: 23.14 min Scan# 3376
 Delta R.T. -0.05 min
 Lab File: BM011655.D
 Acq: 21 Sep 2017 15:59

Instrument :
 BNA_M
 ClientSampled :

Tgt Ion	Resp	Lower	Upper
252	100		
253	22.8	17.1	25.7
125	22.4	5.4	8.0#



#91
 Benzo(a)pyrene
 Concen: 1.592 ng/ul
 RT: 23.76 min Scan# 3481
 Delta R.T. -0.01 min
 Lab File: BM011655.D
 Acq: 21 Sep 2017 15:59

Tgt Ion	Resp	Lower	Upper
252	100		
253	23.8	17.2	25.8
125	14.1	5.8	8.6#

