

Data Path : Z:\HPCHEM1\BNA M\DATA\BM092117\  
 Data File : BM011665.D  
 Acq On : 21 Sep 2017 22:04  
 Operator : SJ/JU  
 Sample : I5283-09  
 Misc :  
 ALS Vial : 17 Sample Multiplier: 1

Instrument :  
 BNA\_M  
 ClientSampleId :

Quant Time: Sep 22 03:54:17 2017  
 Quant Method : Z:\HPCHEM1\BNA M\METHODS\SOM-EPA-BM090817MA.M  
 Quant Title : SVOA CALIBRATION  
 QLast Update : Fri Sep 22 03:47:29 2017  
 Response via : Initial Calibration

Internal Standards	R.T.	QIon	Response	Conc	Units	Dev(Min)
1) 1,4-Dichlorobenzene-d4	7.96	152	369023	20.00	ng/ul	0.00
18) Naphthalene-d8	10.76	136	1707815	20.00	ng/ul	0.00
36) Acenaphthene-d10	14.59	164	967365	20.00	ng/ul	0.00
62) Phenanthrene-d10	17.33	188	2089780	20.00	ng/ul	0.00
78) Chrysene-d12	21.50	240	1967485	20.00	ng/ul	0.00
86) Perylene-d12	23.86	264	1519369	20.00	ng/ul	0.00

## System Monitoring Compounds

3) 1,4-Dioxane-d8	3.39	96	12788	1.56	ng/uL	0.00
5) Phenol-d5	7.11	99	288681	8.15	ng/ul	0.00
7) Bis-(2-Chloroethyl)ether-d	7.29	67	300500	12.58	ng/ul	0.00
9) 2-Chlorophenol-d4	7.49	132	238331	8.92	ng/ul	0.00
13) 4-Methylphenol-d8	8.66	113	249793	9.03	ng/ul	0.00
19) Nitrobenzene-d5	9.12	128	168669	13.01	ng/ul	0.00
22) 2-Nitrophenol-d4	9.85	143	97009	7.20	ng/ul	0.00
26) 2,4-Dichlorophenol-d3	10.38	165	223425	8.24	ng/ul	0.00
29) 4-Chloroaniline-d4	10.90	131	212780	7.11	ng/ul	0.00
44) Dimethylphthalate-d6	13.99	166	688963	8.42	ng/ul	0.00
47) Acenaphthylene-d8	14.29	160	1593887	16.11	ng/ul	0.00
52) 4-Nitrophenol-d4	14.78	143	45482	2.96	ng/ul	0.00
58) Fluorene-d10	15.58	176	1195923	16.88	ng/ul	0.00
63) 4,6-Dinitro-2-methylphenol	15.69	200	50700	4.17	ng/ul	0.00
71) Anthracene-d10	17.43	188	1786176	17.36	ng/ul	0.00
79) Pyrene-d10	19.72	212	1969131	21.37	ng/ul	0.00
90) Benzo(a)pyrene-d12	23.71	264	1228051	16.96	ng/ul	0.00

## Target Compounds

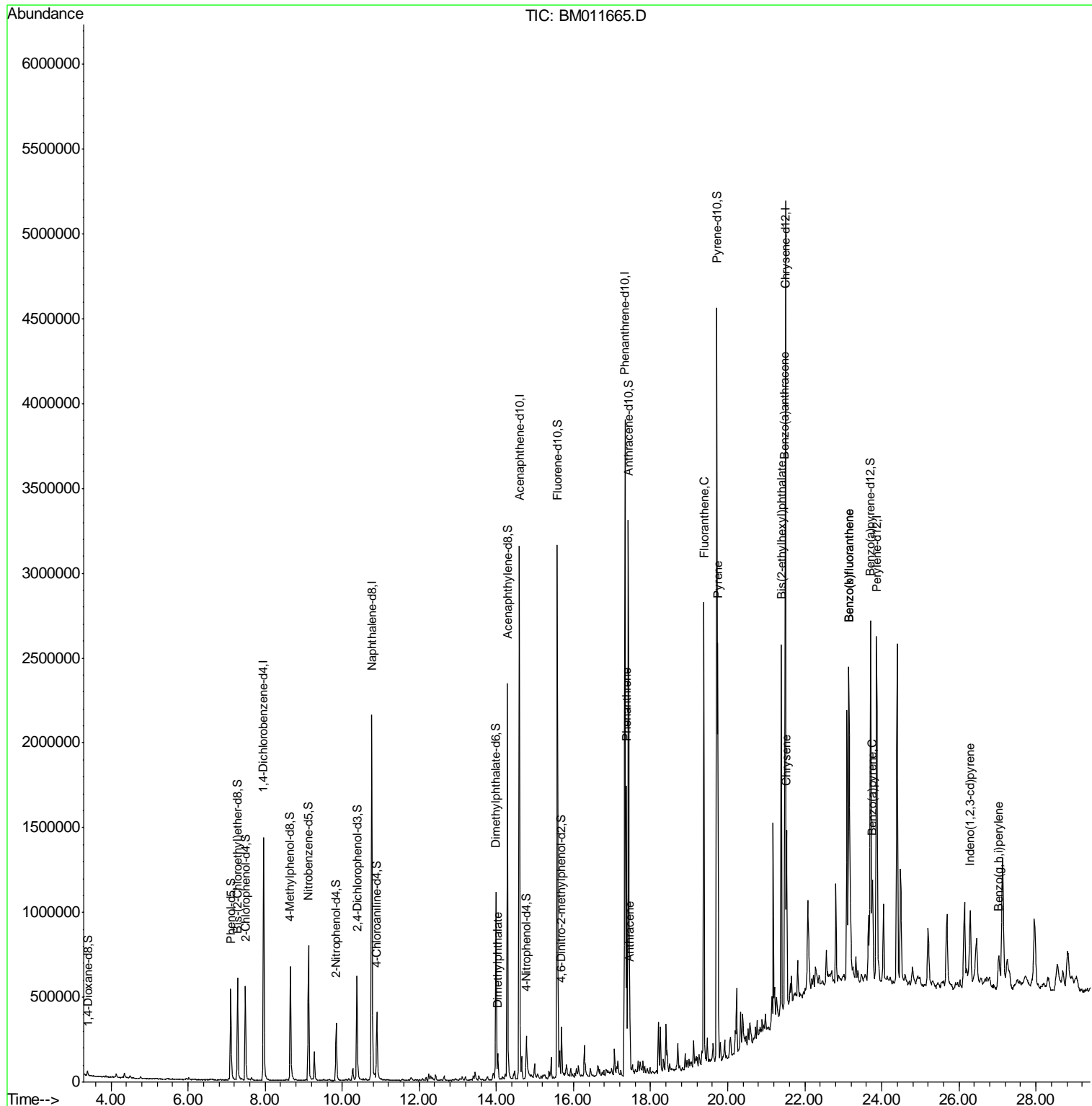
					Ovalue	
45) Dimethylphthalate	14.04	163	83773	1.070	ng/ul#	98
70) Phenanthrene	17.37	178	926044	7.950	ng/ul	99
72) Anthracene	17.46	178	206638	1.729	ng/ul	99
77) Fluoranthene	19.38	202	1544079	12.888	ng/ul#	91
80) Pyrene	19.74	202	1343955	11.708	ng/ul#	88
83) Benzo(a)anthracene	21.48	228	656197	6.057	ng/ul	98
84) Bis(2-ethylhexyl)phthalate	21.39	149	634740	7.829	ng/ul#	95
85) Chrysene	21.53	228	553172	5.633	ng/ul	99
88) Benzo(b)fluoranthene	23.14	252	625309	6.841	ng/ul#	93
89) Benzo(k)fluoranthene	23.14	252	625309	7.123	ng/ul#	92
91) Benzo(a)pyrene	23.76	252	405785	4.703	ng/ul#	95
92) Indeno(1,2,3-cd)pyrene	26.29	276	256862	2.706	ng/ul#	90
94) Benzo(g,h,i)perylene	27.04	276	254420	3.310	ng/ul#	91

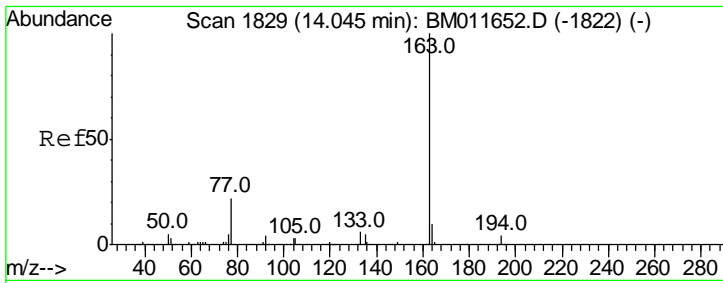
(#) = qualifier out of range (m) = manual integration (+) = signals summed

Data Path : Z:\HPCHEM1\BNA M\DATA\BM092117\  
 Data File : BM011665.D  
 Acq On : 21 Sep 2017 22:04  
 Operator : SJ/JU  
 Sample : I5283-09  
 Misc :  
 ALS Vial : 17 Sample Multiplier: 1

Instrument :  
 BNA\_M  
 ClientSampled :

Quant Time: Sep 22 03:54:17 2017  
 Quant Method : Z:\HPCHEM1\BNA M\METHODS\SOM-EPA-BM090817MA.M  
 Quant Title : SVOA CALIBRATION  
 QLast Update : Fri Sep 22 03:47:29 2017  
 Response via : Initial Calibration

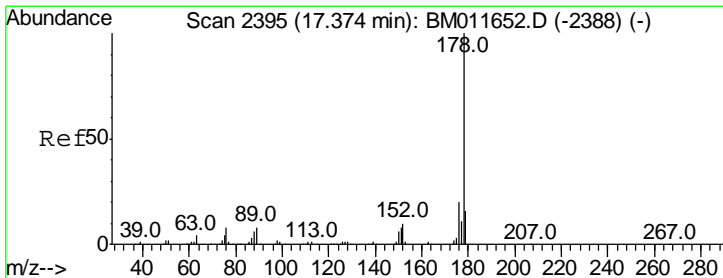
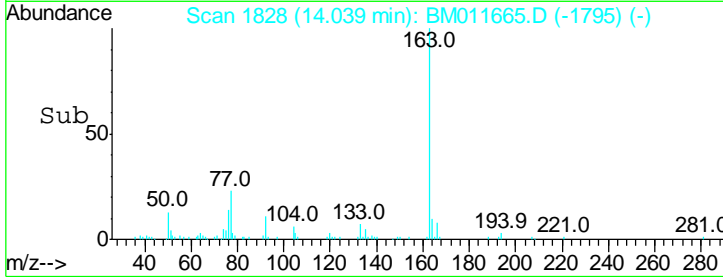
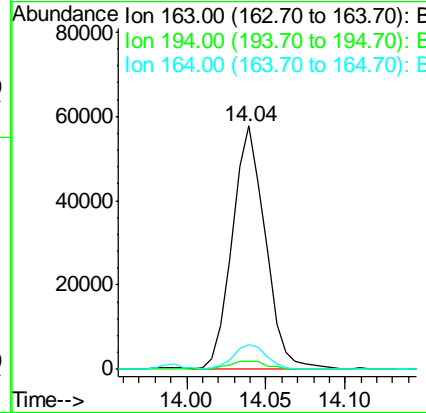
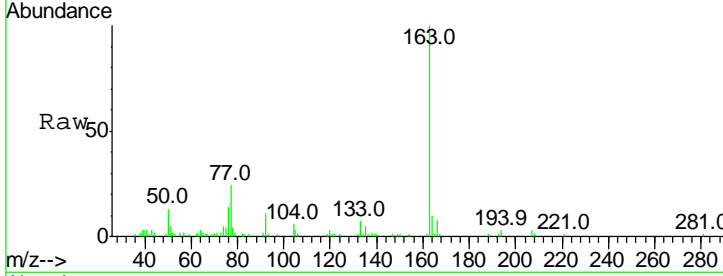




#45  
 Dimethylphthalate  
 Concen: 1.070 ng/ul  
 RT: 14.04 min Scan# 1828  
 Delta R.T. -0.01 min  
 Lab File: BM011665.D  
 Acq: 21 Sep 2017 22:04

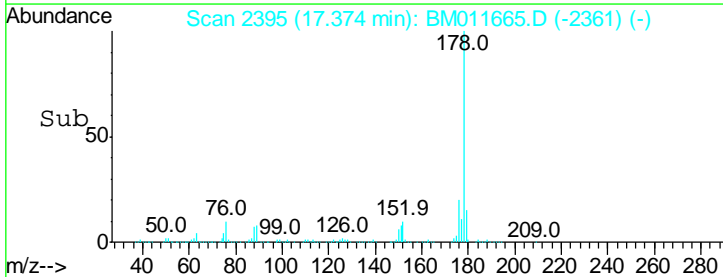
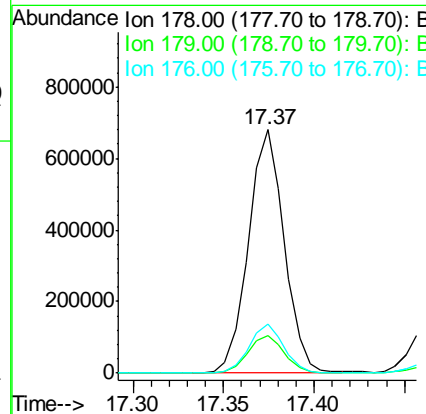
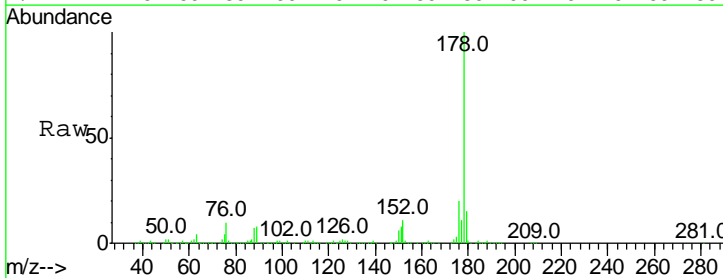
Instrument :  
 BNA\_M  
 ClientSampled :

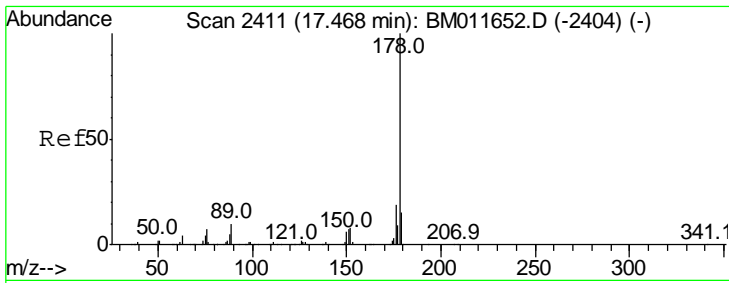
Tgt Ion	Resp	Lower	Upper
163	100		
194	3.1	4.0	6.0#
164	10.2	8.4	12.6



#70  
 Phenanthrene  
 Concen: 7.950 ng/ul  
 RT: 17.37 min Scan# 2395  
 Delta R.T. 0.00 min  
 Lab File: BM011665.D  
 Acq: 21 Sep 2017 22:04

Tgt Ion	Resp	Lower	Upper
178	100		
179	15.4	12.3	18.5
176	20.0	15.4	23.0

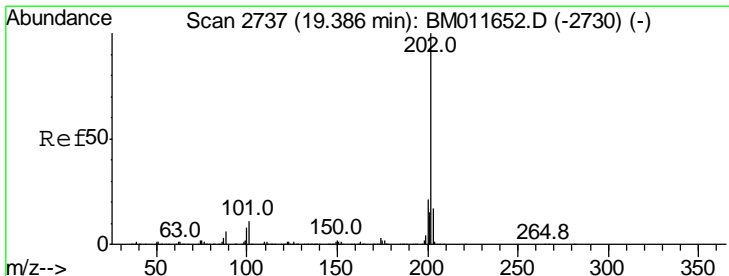
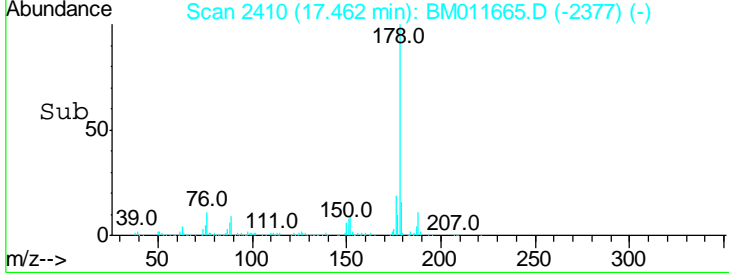
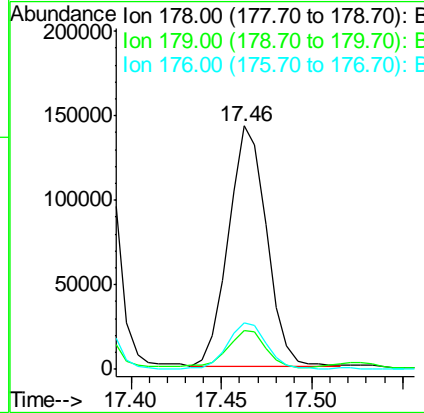
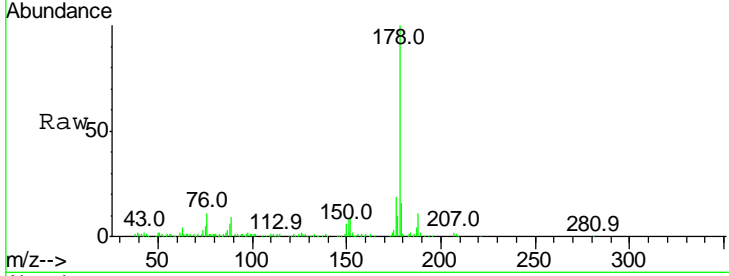




#72  
 Anthracene  
 Concen: 1.729 ng/ul  
 RT: 17.46 min Scan# 2410  
 Delta R.T. -0.01 min  
 Lab File: BM011665.D  
 Acq: 21 Sep 2017 22:04

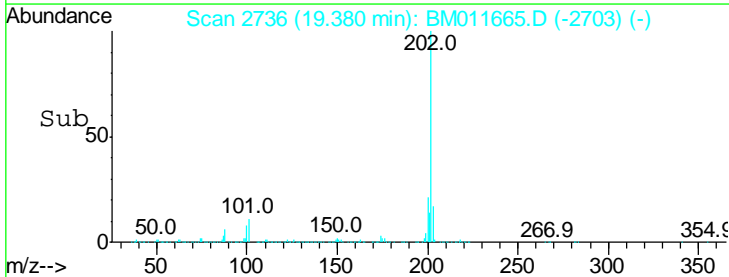
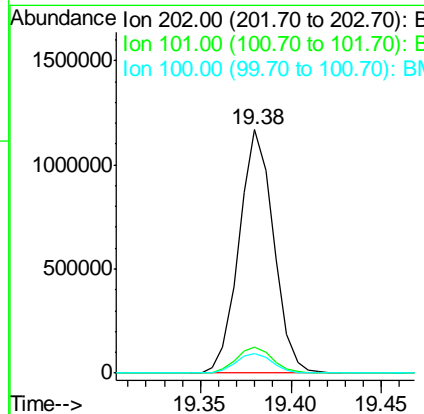
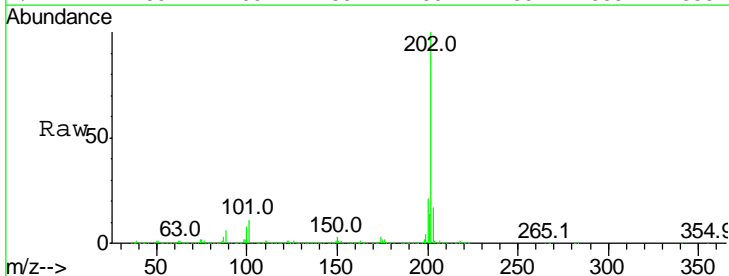
Instrument :  
 BNA\_M  
 ClientSampled :

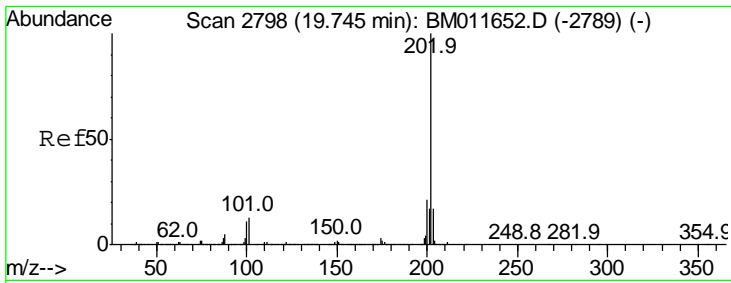
Tgt Ion	Resp	Lower	Upper
178	100		
179	15.9	13.4	20.2
176	19.0	15.4	23.0



#77  
 Fluoranthene  
 Concen: 12.888 ng/ul  
 RT: 19.38 min Scan# 2736  
 Delta R.T. -0.01 min  
 Lab File: BM011665.D  
 Acq: 21 Sep 2017 22:04

Tgt Ion	Resp	Lower	Upper
202	100		
101	10.9	6.1	9.1#
100	8.3	4.6	7.0#



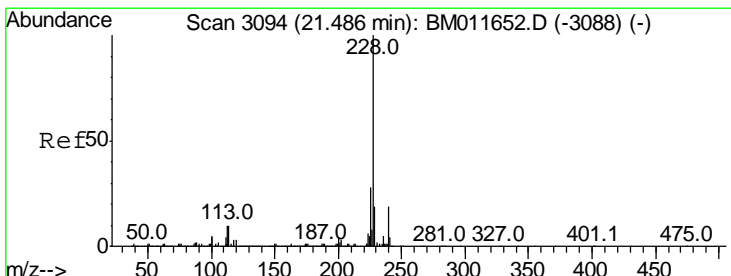
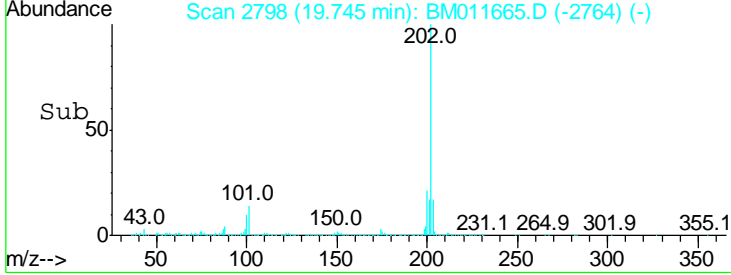
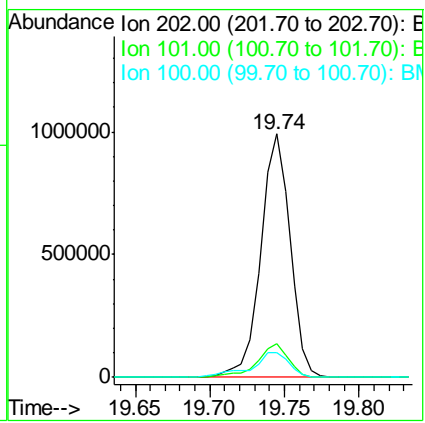
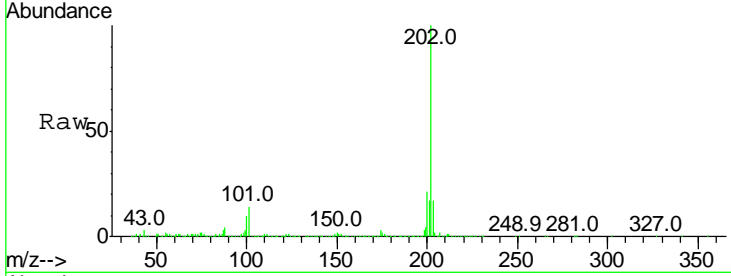


#80  
 Pyrene  
 Concen: 11.708 ng/ul  
 RT: 19.74 min Scan# 2798  
 Delta R.T. 0.00 min  
 Lab File: BM011665.D  
 Acq: 21 Sep 2017 22:04

Instrument :  
 BNA\_M  
 ClientSampled :

Tgt Ion: 202 Resp: 1343955

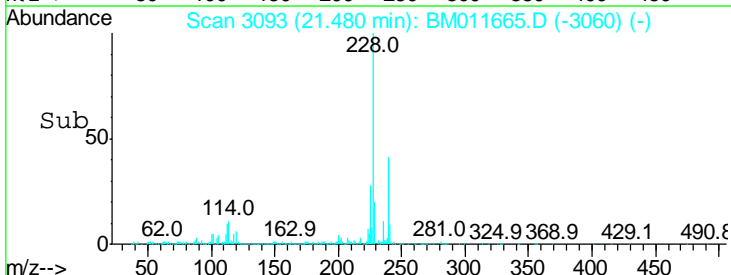
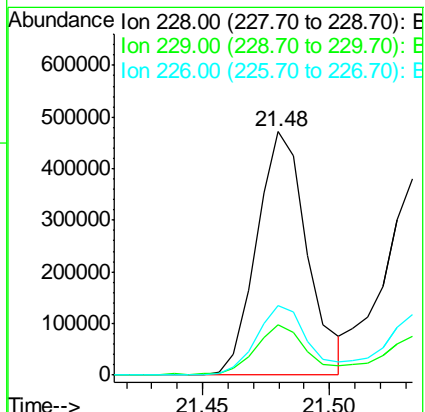
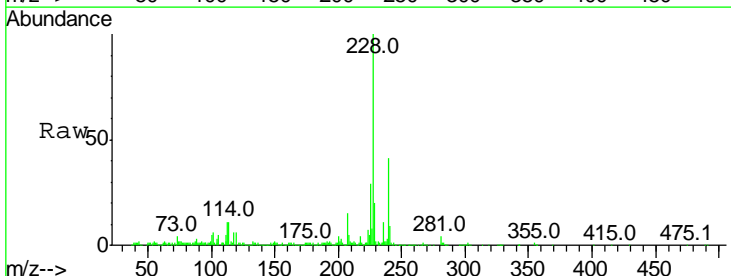
Ion	Ratio	Lower	Upper
202	100		
101	13.7	6.9	10.3#
100	10.2	5.6	8.4#

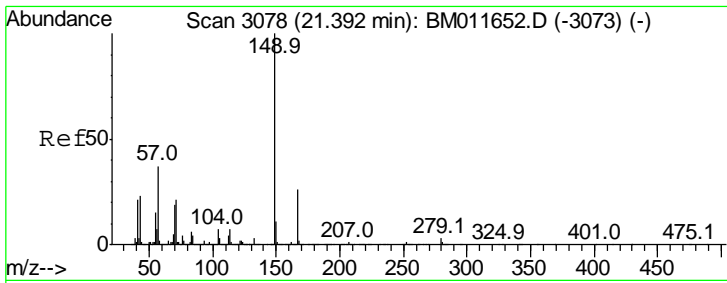


#83  
 Benzo(a)anthracene  
 Concen: 6.057 ng/ul  
 RT: 21.48 min Scan# 3093  
 Delta R.T. -0.01 min  
 Lab File: BM011665.D  
 Acq: 21 Sep 2017 22:04

Tgt Ion: 228 Resp: 656197

Ion	Ratio	Lower	Upper
228	100		
229	20.4	16.0	24.0
226	28.6	21.8	32.8

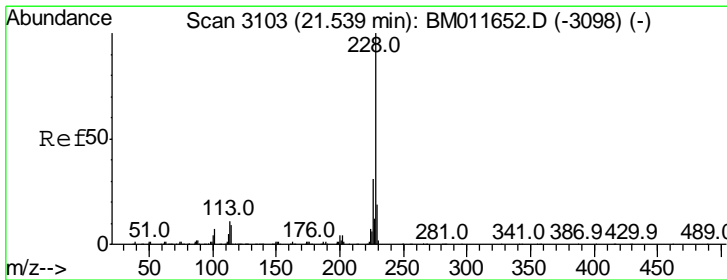
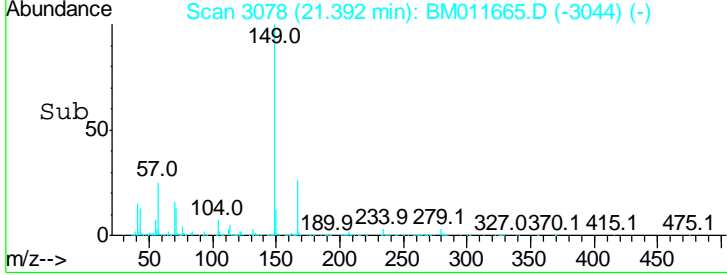
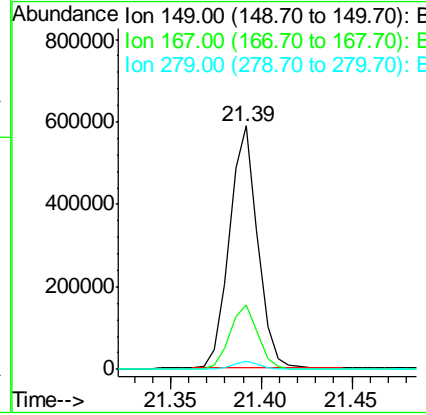
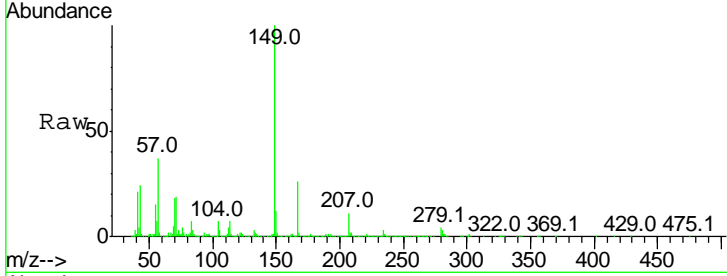




#84  
 Bis(2-ethylhexyl)phthalate  
 Concen: 7.829 ng/ul  
 RT: 21.39 min Scan# 3078  
 Delta R.T. 0.00 min  
 Lab File: BM011665.D  
 Acq: 21 Sep 2017 22:04

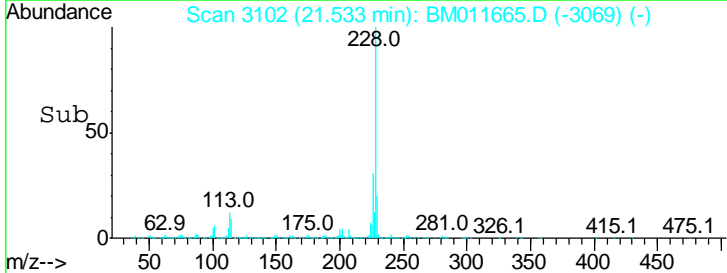
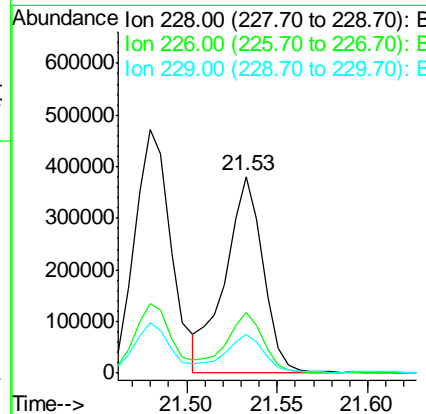
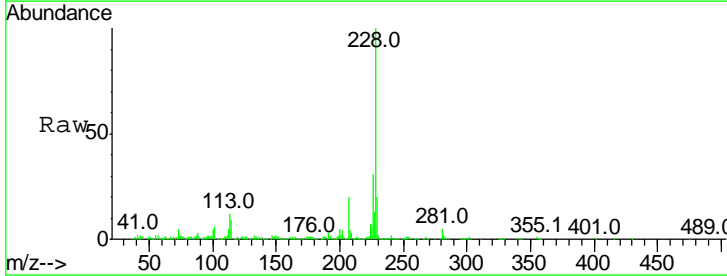
Instrument :  
 BNA\_M  
 ClientSampled :

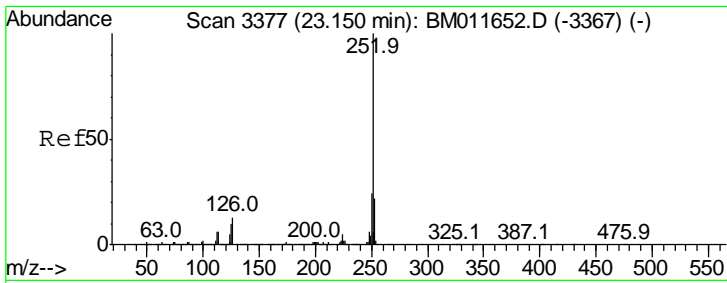
Tgt Ion	Resp	Lower	Upper
149	100		
167	26.3	23.0	34.6
279	3.5	4.3	6.5#



#85  
 Chrysene  
 Concen: 5.633 ng/ul  
 RT: 21.53 min Scan# 3102  
 Delta R.T. -0.01 min  
 Lab File: BM011665.D  
 Acq: 21 Sep 2017 22:04

Tgt Ion	Resp	Lower	Upper
228	100		
226	31.1	24.1	36.1
229	19.8	16.0	24.0

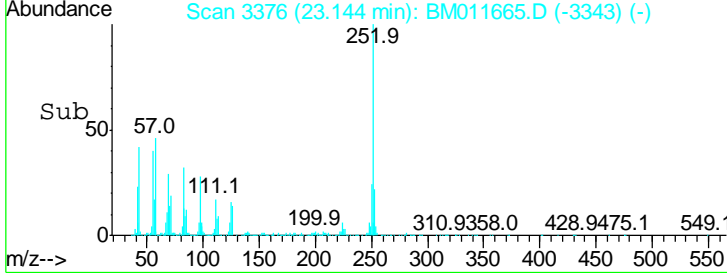
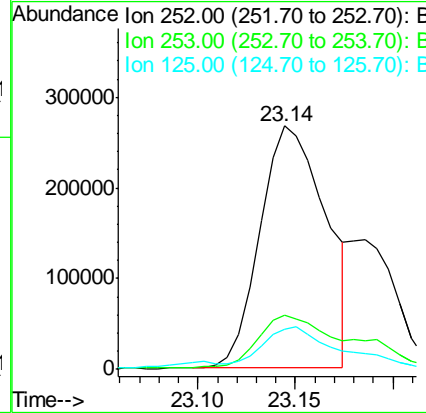
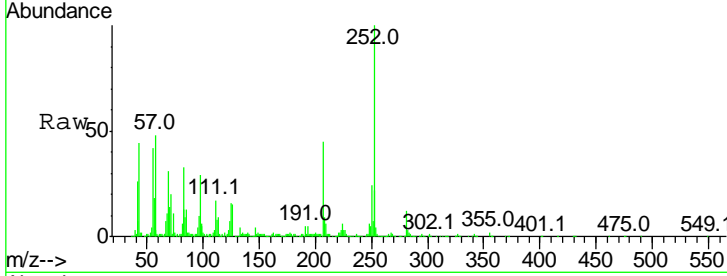




#88  
 Benzo(b)fluoranthene  
 Concen: 6.841 ng/ul  
 RT: 23.14 min Scan# 3376  
 Delta R.T. -0.01 min  
 Lab File: BM011665.D  
 Acq: 21 Sep 2017 22:04

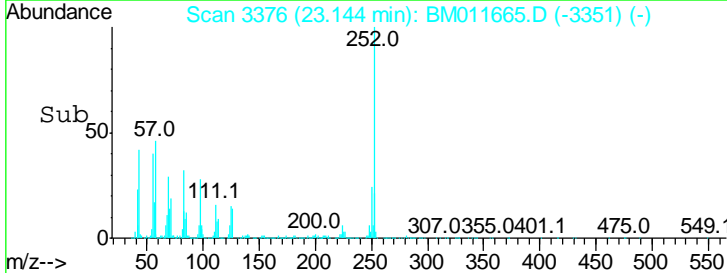
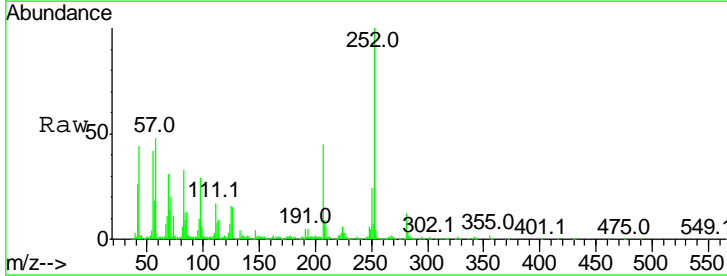
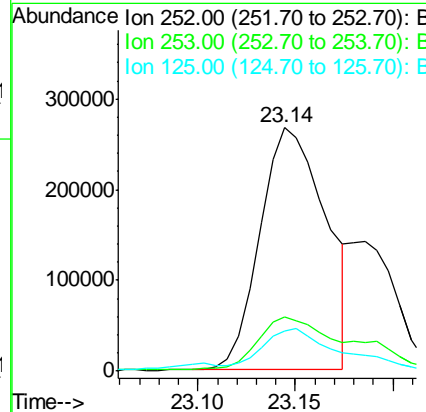
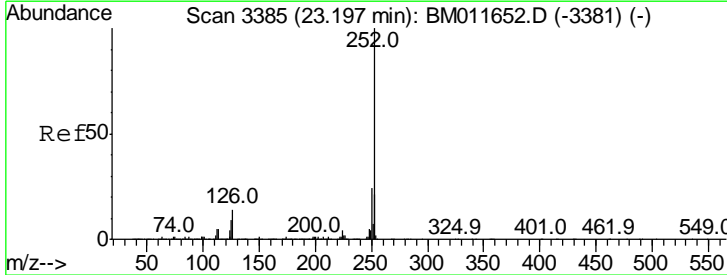
Instrument :  
 BNA\_M  
 ClientSampled :

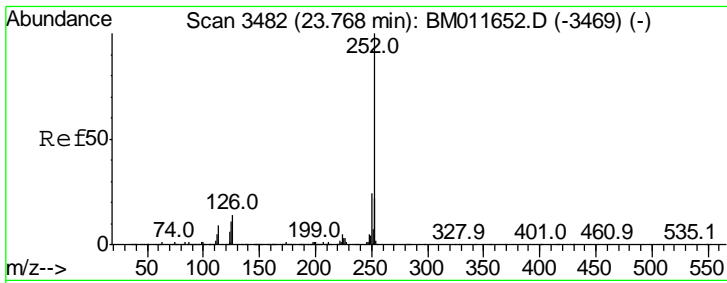
Tgt Ion	Resp	Lower	Upper
252	100		
253	22.0	17.4	26.0
125	16.4	4.9	7.3#



#89  
 Benzo(k)fluoranthene  
 Concen: 7.123 ng/ul  
 RT: 23.14 min Scan# 3376  
 Delta R.T. -0.05 min  
 Lab File: BM011665.D  
 Acq: 21 Sep 2017 22:04

Tgt Ion	Resp	Lower	Upper
252	100		
253	22.0	17.1	25.7
125	16.4	5.4	8.0#

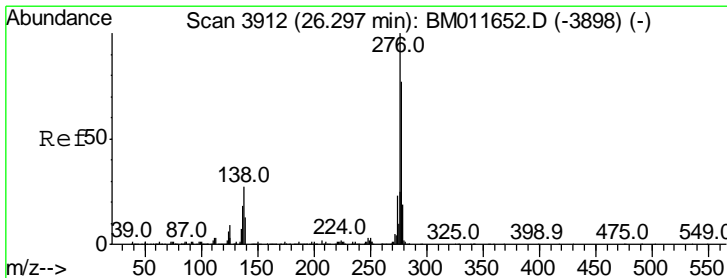
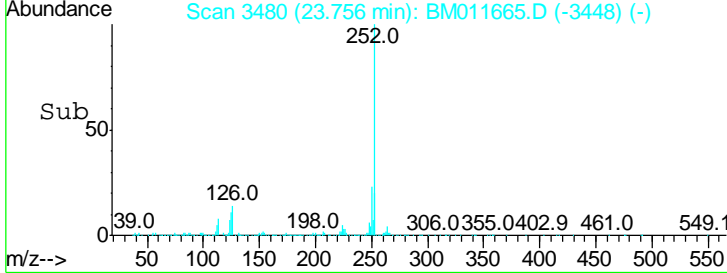
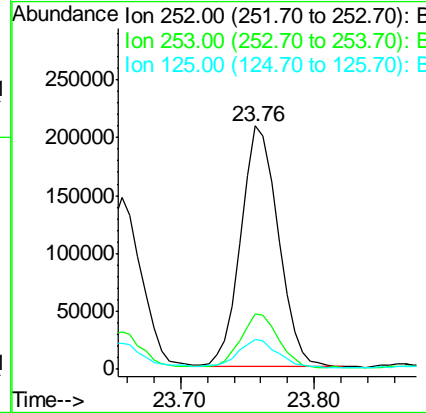
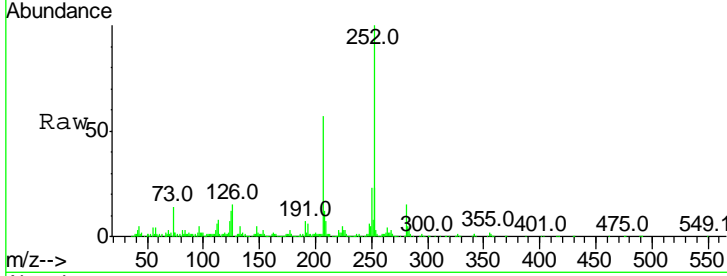




#91  
 Benzo(a)pyrene  
 Concen: 4.703 ng/ul  
 RT: 23.76 min Scan# 3480  
 Delta R.T. -0.01 min  
 Lab File: BM011665.D  
 Acq: 21 Sep 2017 22:04

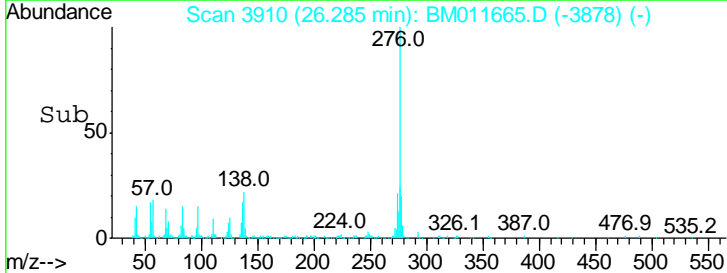
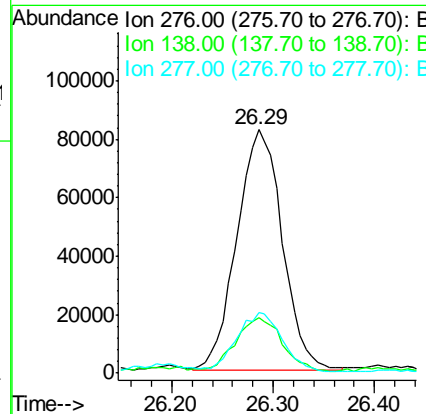
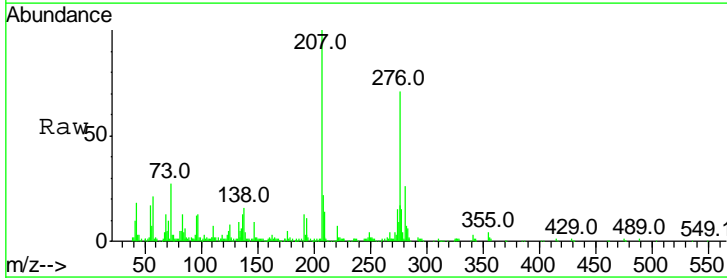
Instrument :  
 BNA\_M  
 ClientSampleId :

Tgt Ion	Resp	Lower	Upper
252	100		
253	22.6	17.2	25.8
125	12.1	5.8	8.6#

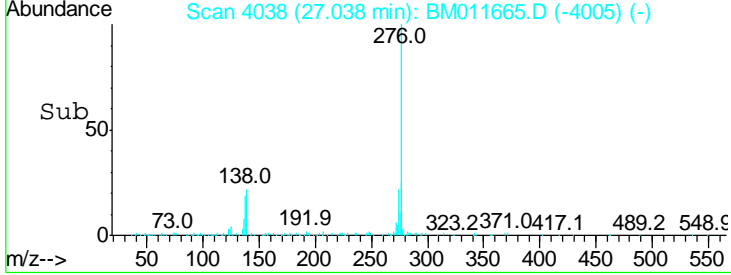
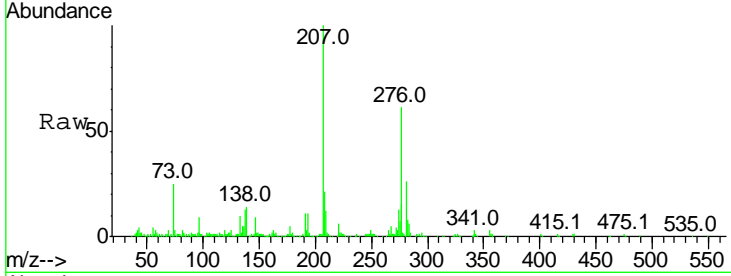
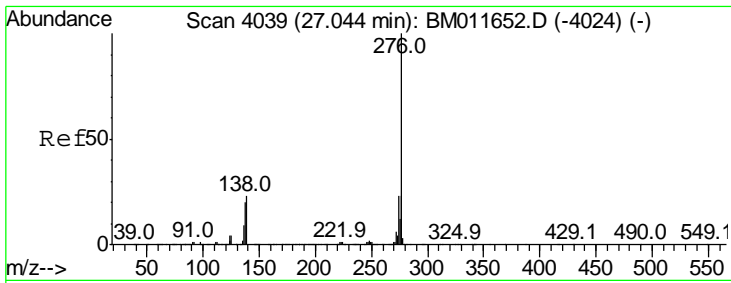


#92  
 Indeno(1,2,3-cd)pyrene  
 Concen: 2.706 ng/ul  
 RT: 26.29 min Scan# 3910  
 Delta R.T. -0.01 min  
 Lab File: BM011665.D  
 Acq: 21 Sep 2017 22:04

Tgt Ion	Resp	Lower	Upper
276	100		
138	22.6	10.9	16.3#
277	24.7	18.9	28.3







#94  
 Benzo(a,h,i)perylene  
 Concen: 3.310 ng/ul  
 RT: 27.04 min Scan# 4038  
 Delta R.T. -0.01 min  
 Lab File: BM011665.D  
 Acq: 21 Sep 2017 22:04

Instrument :  
 BNA\_M  
 ClientSampled :

Tot Ion: 276 Resp: 254420

Ion	Ratio	Lower	Upper
276	100		
138	22.5	11.2	16.8#
277	24.7	19.0	28.6

