

Data Path : Z:\svoasrv\HPCHEM1\BNA\_M\Data\BM092520\  
 Data File : BM027551.D  
 Acq On : 26 Sep 2020 05:06  
 Operator : JU/CG  
 Sample : L4139-11  
 Misc :  
 ALS Vial : 33 Sample Multiplier: 1

Instrument :  
 BNA\_M  
 ClientSampleId :  
 BG4A3

Integration Parameters: LSCINT.P

Integrator: RTE  
 Smoothing : OFF Filtering: 5  
 Sampling : 1 Min Area: 0.1 % of largest Peak  
 Start Thrs: 0.2 Max Peaks: 100  
 Stop Thrs : 0 Peak Location: TOP

If leading or trailing edge < 100 prefer < Baseline drop else tangent >  
 Peak separation: 5

Method : Z:\SVOASRV\HPCHEM1\BNA\_M\METHODS\SOM-EPA-BM092420MA.M  
 Title : SVOA CALIBRATION

Signal : TIC: BM027551.D\data.ms

peak #	R.T. min	first scan	max scan	last scan	PK TY	peak height	corr. area	corr. % max.	% of total
1	3.063	9	13	24	rVB	165392	233491	5.84%	0.707%
2	3.316	51	56	60	rBV	17249	23044	0.58%	0.070%
3	4.040	176	179	183	rBV2	5198	7134	0.18%	0.022%
4	5.145	361	367	374	rBV	98710	146864	3.67%	0.445%
5	5.340	393	400	407	rBV	21278	29383	0.74%	0.089%
6	5.469	417	422	430	rBV	104463	162195	4.06%	0.491%
7	5.834	478	484	492	rBV	64508	95130	2.38%	0.288%
8	6.310	558	565	570	rBV3	14253	22865	0.57%	0.069%
9	6.487	588	595	599	rBV3	8408	13992	0.35%	0.042%
10	6.792	644	647	650	rBV2	5570	7532	0.19%	0.023%
11	6.969	669	677	686	rVV	99844	172121	4.31%	0.522%
12	7.139	699	706	713	rBV	312637	478163	11.96%	1.449%
13	7.339	733	740	748	rVB	395472	633412	15.85%	1.919%
14	7.410	748	752	755	rBV3	5305	9155	0.23%	0.028%
15	7.457	755	760	764	rVV	14589	23634	0.59%	0.072%
16	7.516	764	770	776	rVB4	9472	15491	0.39%	0.047%
17	7.804	812	819	828	rBV	359166	561619	14.05%	1.702%
18	7.922	835	839	843	rBV3	6036	8655	0.22%	0.026%
19	8.010	848	854	858	rVB5	14680	21753	0.54%	0.066%
20	8.181	873	883	887	rBV3	7676	16649	0.42%	0.050%
21	8.504	931	938	946	rVB	312903	488059	12.21%	1.479%
22	8.904	1001	1006	1008	rBV3	6061	8776	0.22%	0.027%
23	8.951	1008	1014	1025	rVV	422811	699355	17.50%	2.119%
24	9.033	1025	1028	1040	rVB4	7334	14440	0.36%	0.044%
25	9.592	1118	1123	1126	rBV3	5391	8532	0.21%	0.026%
26	9.675	1129	1137	1148	rVV	388531	648175	16.22%	1.964%
27	10.010	1189	1194	1198	rVB6	8782	13873	0.35%	0.042%
28	10.210	1221	1228	1236	rBV	699471	1126655	28.19%	3.414%
29	10.404	1257	1261	1266	rVB4	6705	8998	0.23%	0.027%
30	10.592	1285	1293	1299	rBV	458965	757333	18.95%	2.295%
31	10.639	1299	1301	1305	rVV2	6334	7975	0.20%	0.024%
32	10.722	1309	1315	1320	rVV2	42714	72650	1.82%	0.220%
33	10.998	1358	1362	1367	rVB4	6141	9664	0.24%	0.029%
34	11.186	1388	1394	1402	rVV5	4695	9824	0.25%	0.030%
35	11.275	1402	1409	1415	rVB2	21752	37312	0.93%	0.113%
36	11.816	1493	1501	1504	rBV4	3260	7249	0.18%	0.022%

Data Path : Z:\svoasrv\HPCHEM1\BNA\_M\Data\BM092520\  
 Data File : BM027551.D  
 Acq On : 26 Sep 2020 05:06  
 Operator : JU/CG  
 Sample : L4139-11  
 Misc :  
 ALS Vial : 33 Sample Multiplier: 1

Instrument :  
 BNA\_M  
 ClientSampleId :  
 BG4A3

Integration Parameters: LSCINT.P

Integrator: RTE  
 Smoothing : OFF Filtering: 5  
 Sampling : 1 Min Area: 0.1 % of largest Peak  
 Start Thrs: 0.2 Max Peaks: 100  
 Stop Thrs : 0 Peak Location: TOP

If leading or trailing edge < 100 prefer < Baseline drop else tangent >  
 Peak separation: 5

Method : Z:\SVOASRV\HPCHEM1\BNA\_M\METHODS\SOM-EPA-BM092420MA.M  
 Title : SVOA CALIBRATION

37	11.933	1515	1521	1528	rBV	58416	91409	2.29%	0.277%
38	12.174	1558	1562	1567	rVB3	11048	15941	0.40%	0.048%
39	12.545	1620	1625	1632	rVB2	10485	18399	0.46%	0.056%
40	12.945	1684	1693	1701	rBV2	33030	69709	1.74%	0.211%
41	13.080	1712	1716	1723	rVB	11452	15878	0.40%	0.048%
42	13.274	1743	1749	1756	rVB	24899	37163	0.93%	0.113%
43	13.486	1780	1785	1789	rBV4	4849	7682	0.19%	0.023%
44	13.845	1840	1846	1851	rBV	1432052	1989605	49.78%	6.028%
45	13.892	1851	1854	1860	rVV	87796	123757	3.10%	0.375%
46	14.127	1887	1894	1902	rVB	1499191	2153232	53.87%	6.524%
47	14.215	1902	1909	1913	rBV2	11133	18248	0.46%	0.055%
48	14.433	1940	1946	1962	rBV	822910	1242332	31.08%	3.764%
49	14.621	1971	1978	1987	rBV	112681	165513	4.14%	0.501%
50	15.180	2069	2073	2076	rBV	6735	9447	0.24%	0.029%
51	15.427	2108	2115	2123	rVB	2039089	2910667	72.82%	8.819%
52	15.539	2127	2134	2142	rVV	539530	726068	18.17%	2.200%
53	15.692	2151	2160	2167	rVB2	55185	118882	2.97%	0.360%
54	15.933	2195	2201	2207	rBV3	14531	29016	0.73%	0.088%
55	16.057	2215	2222	2226	rBV	25095	41560	1.04%	0.126%
56	16.092	2226	2228	2235	rVV	17306	26606	0.67%	0.081%
57	16.174	2239	2242	2245	rVV5	6263	7737	0.19%	0.023%
58	16.209	2245	2248	2255	rVB2	9816	11209	0.28%	0.034%
59	16.445	2282	2288	2291	rBV7	7439	11836	0.30%	0.036%
60	16.486	2291	2295	2298	rVV3	14235	16921	0.42%	0.051%
61	16.557	2302	2307	2310	rBV2	7204	11908	0.30%	0.036%
62	16.580	2310	2311	2318	rVB6	6522	8004	0.20%	0.024%
63	16.645	2318	2322	2325	rBV4	5457	8166	0.20%	0.025%
64	16.704	2327	2332	2335	rBV6	4623	8402	0.21%	0.025%
65	16.856	2355	2358	2364	rVB4	5633	7364	0.18%	0.022%
66	16.915	2364	2368	2372	rVV5	5966	8916	0.22%	0.027%
67	17.139	2400	2406	2408	rBV	88610	124790	3.12%	0.378%
68	17.174	2408	2412	2420	rVV	1066836	1486863	37.20%	4.505%
69	17.274	2422	2429	2439	rVV	2396717	3393190	84.89%	10.281%
70	17.351	2439	2442	2447	rVB6	5961	8880	0.22%	0.027%
71	17.421	2447	2454	2461	rBV9	4904	12727	0.32%	0.039%
72	17.551	2467	2476	2480	rBV3	10095	21594	0.54%	0.065%
73	17.709	2500	2503	2506	rVB3	9365	11182	0.28%	0.034%
74	17.792	2512	2517	2521	rBV4	6099	8924	0.22%	0.027%
75	17.845	2521	2526	2531	rBV9	10718	17475	0.44%	0.053%
76	17.903	2533	2536	2540	rVB3	5947	7302	0.18%	0.022%

Data Path : Z:\svoasrv\HPCHEM1\BNA\_M\Data\BM092520\  
 Data File : BM027551.D  
 Acq On : 26 Sep 2020 05:06  
 Operator : JU/CG  
 Sample : L4139-11  
 Misc :  
 ALS Vial : 33 Sample Multiplier: 1

Instrument :  
 BNA\_M  
 ClientSampleId :  
 BG4A3

Integration Parameters: LSCINT.P  
 Integrator: RTE  
 Smoothing : OFF Filtering: 5  
 Sampling : 1 Min Area: 0.1 % of largest Peak  
 Start Thrs: 0.2 Max Peaks: 100  
 Stop Thrs : 0 Peak Location: TOP

If leading or trailing edge < 100 prefer < Baseline drop else tangent >  
 Peak separation: 5

Method : Z:\SVOASRV\HPCHEM1\BNA\_M\METHODS\SOM-EPA-BM092420MA.M  
 Title : SVOA CALIBRATION

77	18.080	2561	2566	2573	rVV	109337	144855	3.62%	0.439%
78	18.139	2573	2576	2582	rVB4	8727	14999	0.38%	0.045%
79	18.209	2584	2588	2593	rBV	35577	49264	1.23%	0.149%
80	18.315	2601	2606	2608	rBV	25677	35702	0.89%	0.108%
81	18.362	2608	2614	2622	rVB	58338	104286	2.61%	0.316%
82	18.762	2680	2682	2687	rVB6	6201	7121	0.18%	0.0222%
83	18.898	2700	2705	2707	rBV6	5469	8123	0.20%	0.025%
84	19.074	2731	2735	2738	rBV3	11009	11689	0.29%	0.035%
85	19.198	2753	2756	2762	rVB	28102	38875	0.97%	0.118%
86	19.298	2768	2773	2777	rBV7	10488	19738	0.49%	0.060%
87	19.356	2780	2783	2790	rVB3	34856	43319	1.08%	0.131%
88	19.450	2795	2799	2804	rVV	27626	39628	0.99%	0.120%
89	19.568	2812	2819	2824	rBV	2873430	3996938	100.00%	12.110%
90	19.609	2824	2826	2833	rVB	98902	115910	2.90%	0.351%
91	19.815	2858	2861	2865	rBV3	19955	20889	0.52%	0.063%
92	19.962	2884	2886	2889	rBV4	8645	9794	0.25%	0.030%
93	20.009	2891	2894	2901	rVB6	10252	14994	0.38%	0.045%
94	20.068	2901	2904	2905	rBV3	8930	9165	0.23%	0.028%
95	20.292	2939	2942	2947	rVB4	23529	25809	0.65%	0.078%
96	20.597	2992	2994	2997	rBV4	11898	12610	0.32%	0.038%
97	21.074	3071	3075	3081	rBV	174923	224021	5.60%	0.679%
98	21.350	3117	3122	3130	rBV	1234924	1552143	38.83%	4.703%
99	23.474	3476	3483	3491	rBV	1876587	3442600	86.13%	10.431%
100	23.615	3501	3507	3516	rVB	761335	1455839	36.42%	4.411%

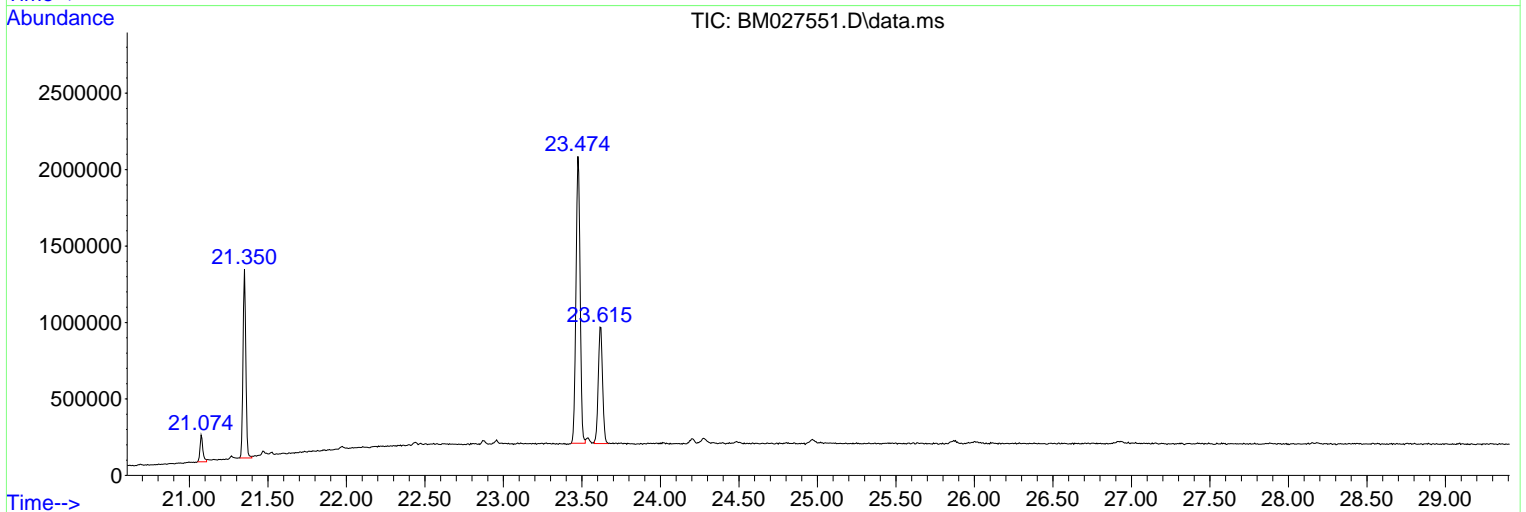
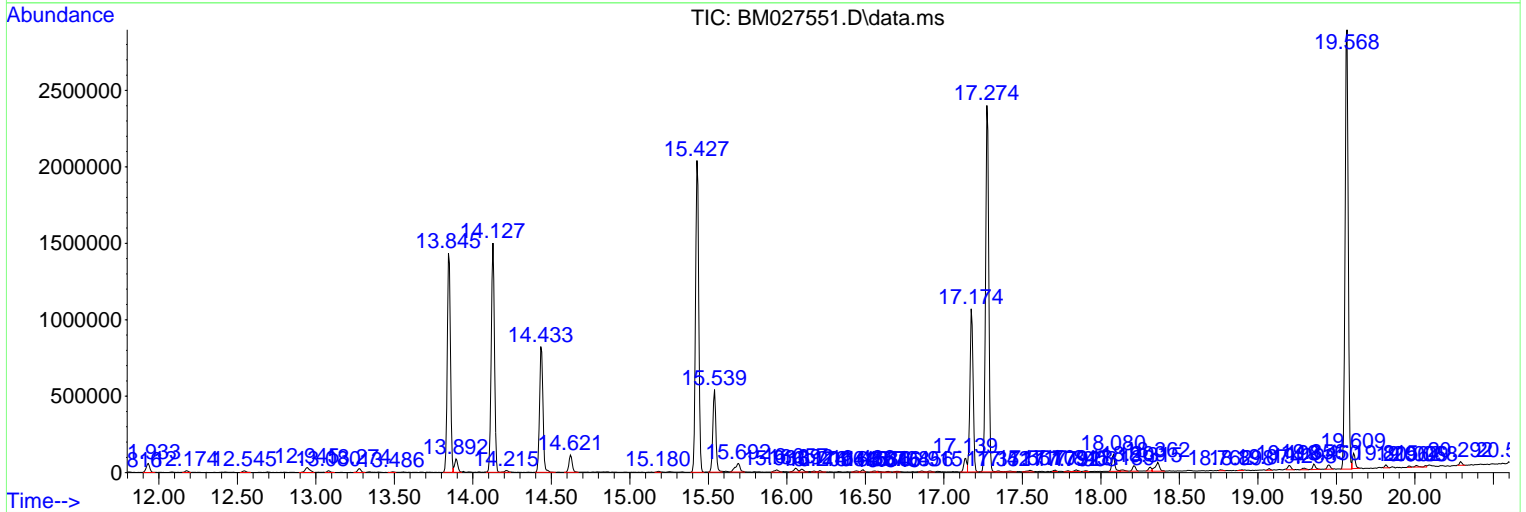
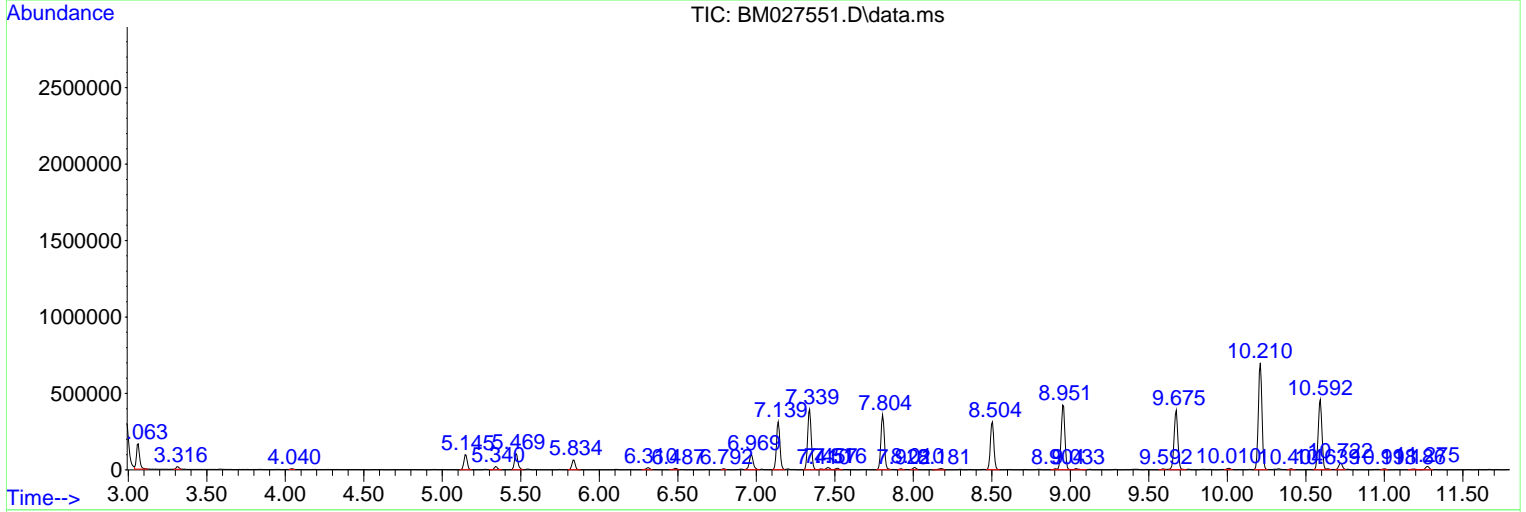
Sum of corrected areas: 33003967

Data Path : Z:\svoasrv\HPCHEM1\BNA\_M\Data\BM092520\  
 Data File : BM027551.D  
 Acq On : 26 Sep 2020 05:06  
 Operator : JU/CG  
 Sample : L4139-11  
 Misc :  
 ALS Vial : 33 Sample Multiplier: 1

**Instrument :**  
 BNA\_M  
**ClientSampled :**  
 BG4A3

Quant Method : Z:\SVOASRV\HPCHEM1\BNA\_M\METHODS\SOM-EPA-BM092420MA.M  
 Quant Title : SVOA CALIBRATION

TIC Library : C:\DATABASE\NIST11.L  
 TIC Integration Parameters: LSCINT.P



Data Path : Z:\svoasrv\HPCHEM1\BNA\_M\Data\BM092520\  
 Data File : BM027551.D  
 Acq On : 26 Sep 2020 05:06  
 Operator : JU/CG  
 Sample : L4139-11  
 Misc :  
 ALS Vial : 33 Sample Multiplier: 1

Instrument :  
 BNA\_M  
 ClientSampleId :  
 BG4A3

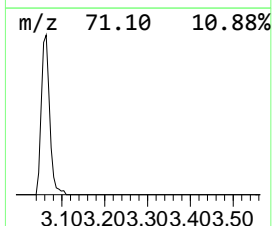
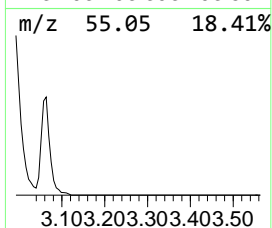
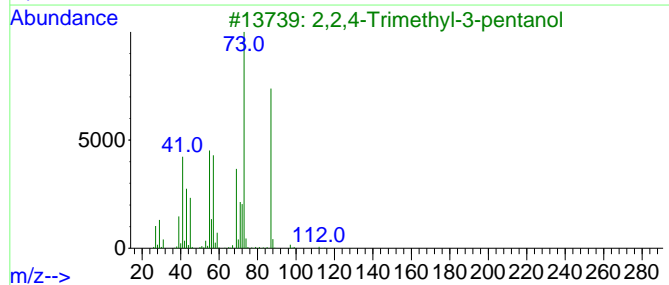
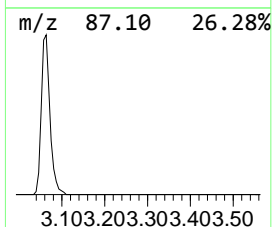
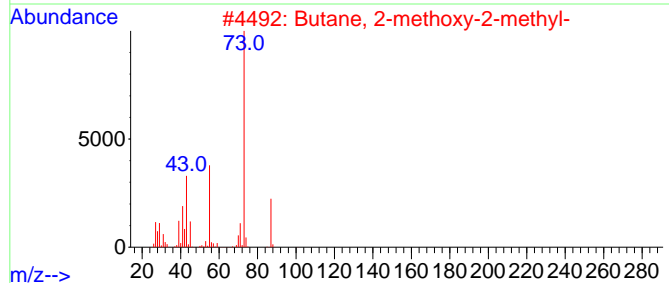
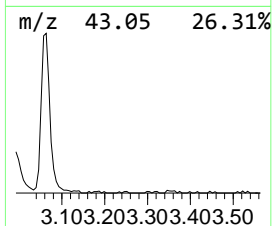
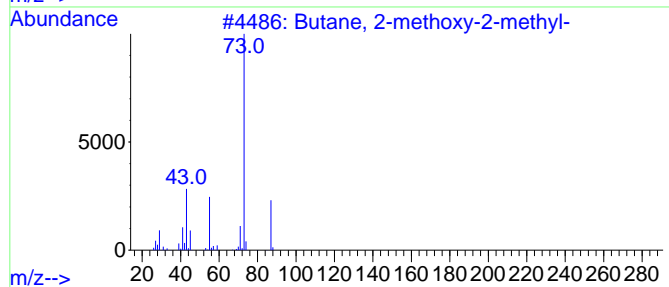
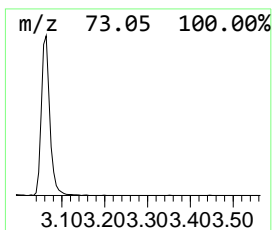
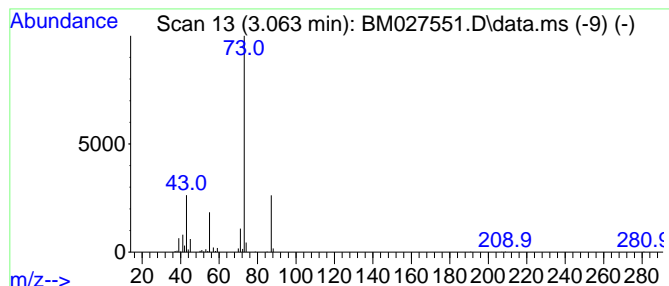
Quant Method : Z:\SVOASRV\HPCHEM1\BNA\_M\METHODS\SOM-EPA-BM092420MA.M  
 Quant Title : SVOA CALIBRATION

TIC Library : C:\DATABASE\NIST11.L  
 TIC Integration Parameters: LSCINT.P

\*\*\*\*\*  
 Peak Number 1 Butane, 2-methoxy-2-methyl- Concentration Rank 1

R.T.	EstConc	Area	Relative to ISTD	R.T.
3.063	8.31 ng/ul	233491	1,4-Dichlorobenzene-d4	7.804

Hit#	of	5	Tentative ID	MW	MolForm	CAS#	Qual
1			Butane, 2-methoxy-2-methyl-	102	C6H14O	000994-05-8	90
2			Butane, 2-methoxy-2-methyl-	102	C6H14O	000994-05-8	64
3			2,2,4-Trimethyl-3-pentanol	130	C8H18O	005162-48-1	43
4			Pentane, 3-methoxy-	102	C6H14O	036839-67-5	17
5			N-Ethylformamide	73	C3H7NO	000627-45-2	9



Data Path : Z:\svoasrv\HPCHEM1\BNA\_M\Data\BM092520\  
 Data File : BM027551.D  
 Acq On : 26 Sep 2020 05:06  
 Operator : JU/CG  
 Sample : L4139-11  
 Misc :  
 ALS Vial : 33 Sample Multiplier: 1

Instrument :  
 BNA\_M  
 ClientSampleId :  
 BG4A3

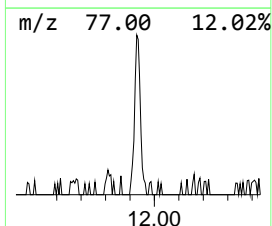
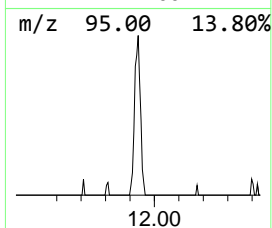
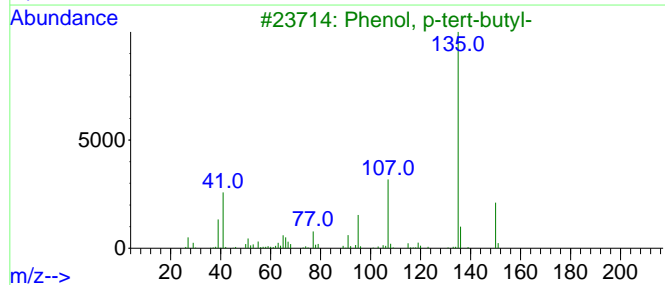
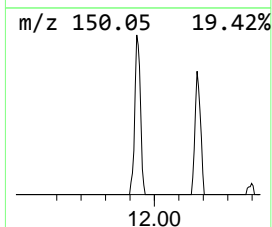
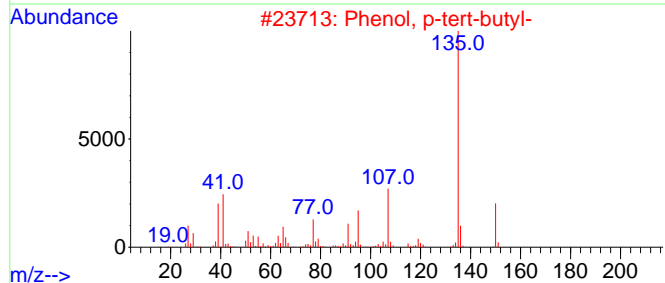
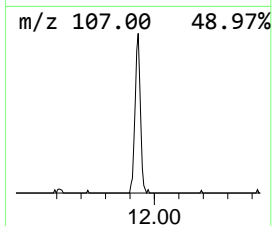
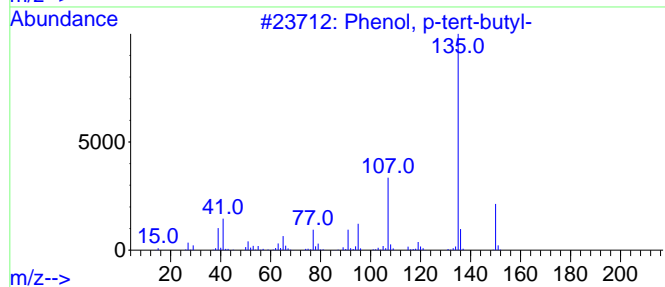
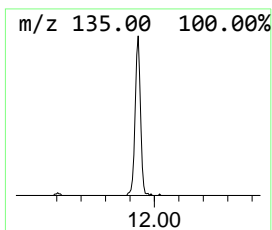
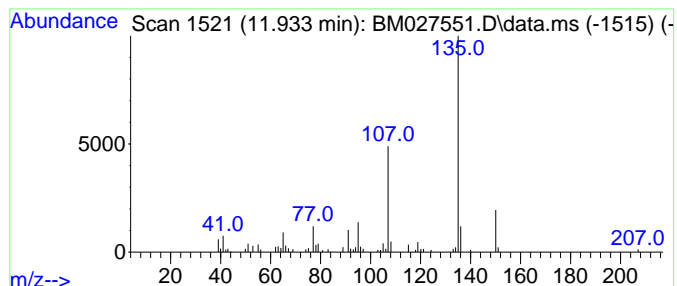
Quant Method : Z:\SVOASRV\HPCHEM1\BNA\_M\METHODS\SOM-EPA-BM092420MA.M  
 Quant Title : SVOA CALIBRATION

TIC Library : C:\DATABASE\NIST11.L  
 TIC Integration Parameters: LSCINT.P

\*\*\*\*\*  
 Peak Number 5 Phenol, p-tert-butyl- Concentration Rank 6

R.T.	EstConc	Area	Relative to ISTD	R.T.
11.933	2.41 ng/ul	91409	Naphthalene-d8	10.592

Hit#	of	5	Tentative ID	MW	MolForm	CAS#	Qual
1			Phenol, p-tert-butyl-	150	C10H14O	000098-54-4	94
2			Phenol, p-tert-butyl-	150	C10H14O	000098-54-4	93
3			Phenol, p-tert-butyl-	150	C10H14O	000098-54-4	87
4			Phenol, m-tert-butyl-	150	C10H14O	000585-34-2	87
5			Phenol, m-tert-butyl-	150	C10H14O	000585-34-2	78



Data Path : Z:\svoasrv\HPCHEM1\BNA\_M\Data\BM092520\  
 Data File : BM027551.D  
 Acq On : 26 Sep 2020 05:06  
 Operator : JU/CG  
 Sample : L4139-11  
 Misc :  
 ALS Vial : 33 Sample Multiplier: 1

Instrument :  
 BNA\_M  
 ClientSampleId :  
 BG4A3

Quant Method : Z:\SVOASRV\HPCHEM1\BNA\_M\METHODS\SOM-EPA-BM092420MA.M  
 Quant Title : SVOA CALIBRATION

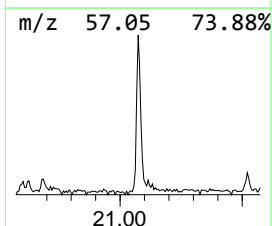
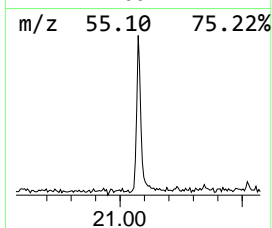
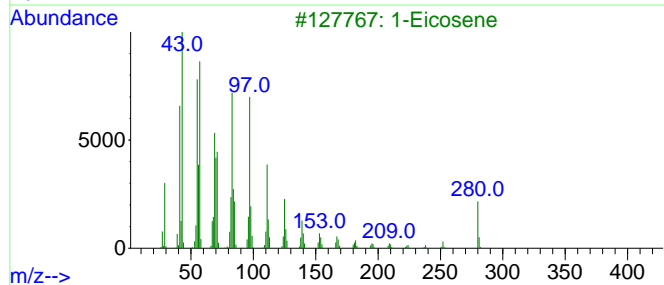
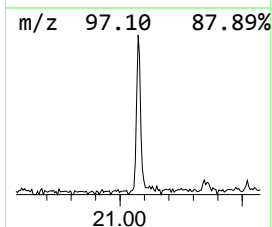
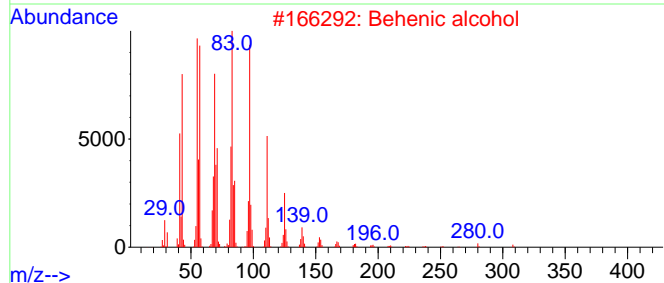
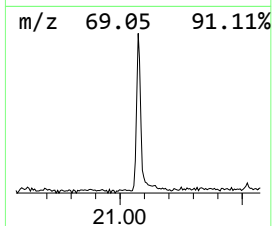
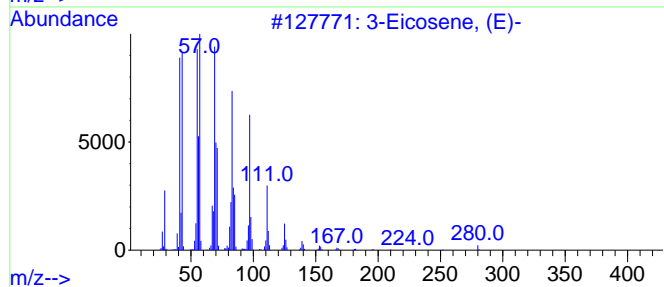
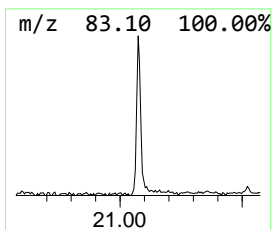
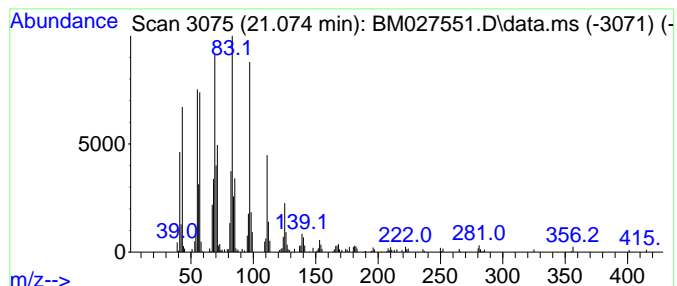
TIC Library : C:\DATABASE\NIST11.L  
 TIC Integration Parameters: LSCINT.P

\*\*\*\*\*  
 Peak Number 6 (DEL) Alkane: Straight-Chai... Concentration Rank 5

R.T.	EstConc	Area	Relative to ISTD	R.T.
21.074	2.89 ng/ul	224021	Chrysene-d12	21.350

Hit#	of 5	Tentative ID	MW	MolForm	CAS#	Qual
1		3-Eicosene, (E)-	280	C20H40	074685-33-9	96
2		Behenic alcohol	326	C22H46O	000661-19-8	95
3		1-Eicosene	280	C20H40	003452-07-1	93
4		E-15-Heptadecenal	252	C17H32O	1000130-97-9	91
5		9-Eicosene, (E)-	280	C20H40	074685-29-3	91



Data Path : Z:\svoasrv\HPCHEM1\BNA\_M\Data\BM092520\  
Data File : BM027551.D  
Acq On : 26 Sep 2020 05:06  
Operator : JU/CG  
Sample : L4139-11  
Misc :  
ALS Vial : 33 Sample Multiplier: 1

Instrument :  
BNA\_M  
ClientSampleId :  
BG4A3

Quant Method : Z:\SVOASRV\HPCHEM1\BNA\_M\METHODS\SOM-EPA-BM092420MA.M  
Quant Title : SVOA CALIBRATION

TIC Library : C:\DATABASE\NIST11.L  
TIC Integration Parameters: LSCINT.P

TIC Top Hit name	RT	EstConc	Units	Response	--Internal Standard--			
					#	RT	Resp	Conc
Butane, 2-metho...	3.063	8.3	ng/u1	233491	1	7.804	561619	20.0
Phenol, p-tert-...	11.933	2.4	ng/u1	91409	2	10.592	757333	20.0
(DEL) Alkane: S...	21.074	2.9	ng/u1	224021	5	21.350	1552140	20.0