

Data Path : Z:\svoasrv\HPCHEM1\BNA_M\Data\BM092521\
 Data File : BM032157.D
 Acq On : 25 Sep 2021 16:58
 Operator : CG/JU
 Sample : M3919-13
 Misc :
 ALS Vial : 14 Sample Multiplier: 1

Instrument :
 BNA_M
 ClientSampled :
 GB6Z2

Manual Integrations
 APPROVED

mohammad
 9/27/2021 3:06:23 PM

Quant Time: Sep 26 00:21:36 2021
 Quant Method : Z:\SVOASRV\HPCHEM1\BNA_M\METHODS\SFAM-EPA-BM092421.M
 Quant Title : SVOA CALIBRATION
 QLast Update : Sat Sep 25 01:15:33 2021
 Response via : Initial Calibration

Compound	R.T.	QIon	Response	Conc	Units	Dev(Min)
Internal Standards						
1) 1,4-Dichlorobenzene-d4	7.666	152	348102	20.000	ng/ul	0.00
20) Naphthalene-d8	10.460	136	1468369	20.000	ng/ul	0.00
38) Acenaphthene-d10	14.313	164	929204	20.000	ng/ul	0.00
64) Phenanthrene-d10	17.036	188	1854207	20.000	ng/ul	0.00
79) Chrysene-d12	21.195	240	1569334	20.000	ng/ul	0.00
88) Perylene-d12	23.365	264	1392509	20.000	ng/ul	0.00
System Monitoring Compounds						
3) 1,4-Dioxane-d8	2.990	96	54488	6.609	ng/uL	0.00
4) Pyridine-d5	3.413	84	308503	13.182	ng/ul	0.00
7) Phenol-d5	6.848	99	261128	9.450	ng/ul	0.00
9) Bis-(2-Chloroethyl)eth...	6.990	67	619007	37.257	ng/ul	0.00
11) 2-Chlorophenol-d4	7.201	132	670716	31.241	ng/ul	0.00
15) 4-Methylphenol-d8	8.389	113	459427	21.264	ng/ul	0.00
21) Nitrobenzene-d5	8.819	128	378160	43.118	ng/ul	0.00
24) 2-Nitrophenol-d4	9.548	143	395042	42.598	ng/ul	0.00
28) 2,4-Dichlorophenol-d3	10.089	165	741615	34.982	ng/ul	0.00
31) 4-Chloroaniline-d4	10.589	131	1038738	36.253	ng/ul	0.00
46) Dimethylphthalate-d6	13.713	166	2642463	43.770	ng/ul	0.00
49) Acenaphthylene-d8	14.001	160	3109704	40.542	ng/ul	0.00
54) 4-Nitrophenol-d4	14.507	143	81612m	8.310	ng/ul	0.00
60) Fluorene-d10	15.301	176	2266268	43.992	ng/ul	0.00
65) 4,6-Dinitro-2-methylph...	15.413	200	311380	35.534	ng/ul	0.00
73) Anthracene-d10	17.136	188	3590623	46.410	ng/ul	0.00
81) Pyrene-d10	19.418	212	3875817	46.940	ng/ul	0.00
92) Benzo(a)pyrene-d12	23.230	264	3004400	45.973	ng/ul	0.00
Target Compounds						
2) 1,4-Dioxane	3.025	88	153624	16.960	ng/uL	94
86) Bis(2-ethylhexyl)phtha...	21.106	149	147859	3.306	ng/ul	98

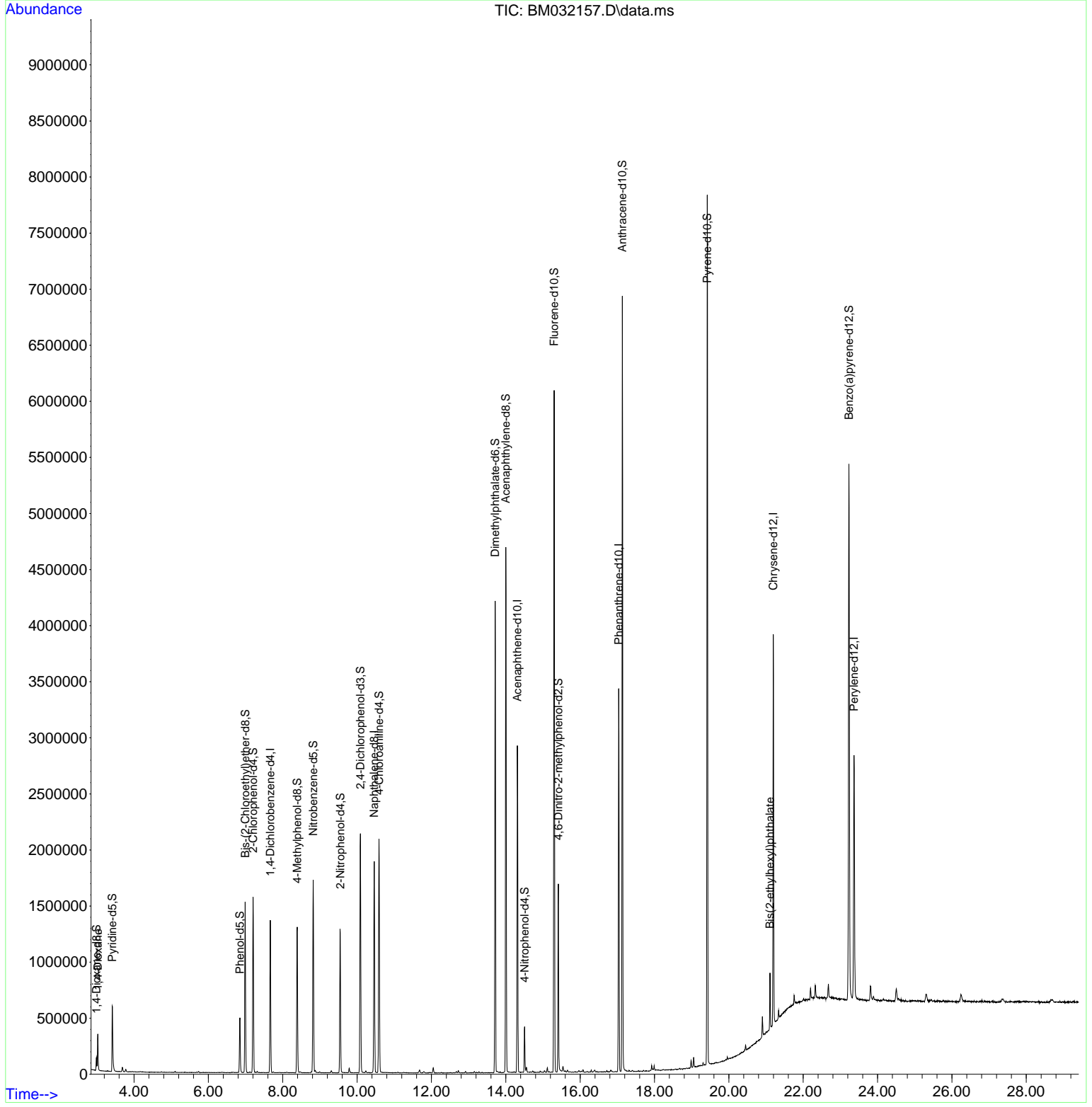
(#) = qualifier out of range (m) = manual integration (+) = signals summed

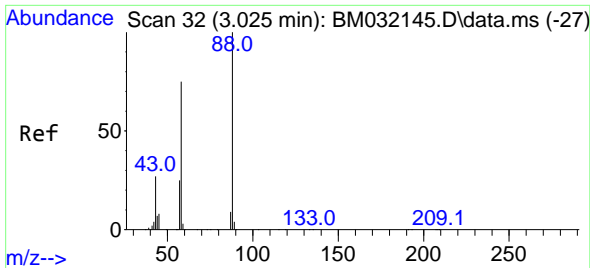
Data Path : Z:\svoasrv\HPCHEM1\BNA_M\Data\BM092521\
 Data File : BM032157.D
 Acq On : 25 Sep 2021 16:58
 Operator : CG/JU
 Sample : M3919-13
 Misc :
 ALS Vial : 14 Sample Multiplier: 1

Instrument :
 BNA_M
 ClientSampled :
 GB6Z2

Manual Integrations
APPROVED
 mohammad
 9/27/2021 3:06:23 PM

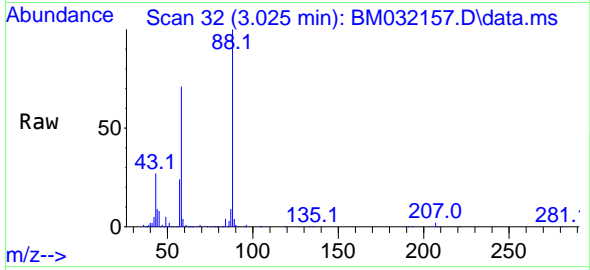
Quant Time: Sep 26 00:21:36 2021
 Quant Method : Z:\SVOASRV\HPCHEM1\BNA_M\METHODS\SFAM-EPA-BM092421.M
 Quant Title : SVOA CALIBRATION
 QLast Update : Sat Sep 25 01:15:33 2021
 Response via : Initial Calibration





#2
 1,4-Dioxane
 Concen: 16.960 ng/uL
 RT: 3.025 min Scan# 32
 Delta R.T. 0.000 min
 Lab File: BM032157.D
 Acq: 25 Sep 2021 16:58

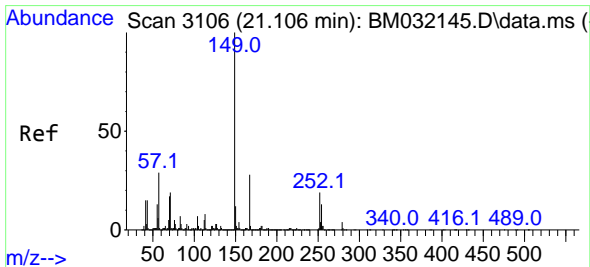
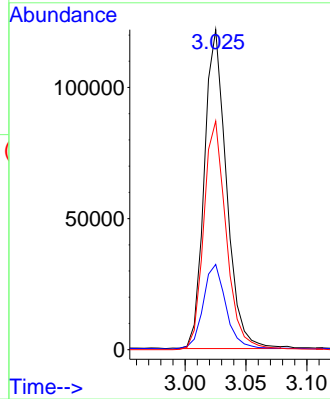
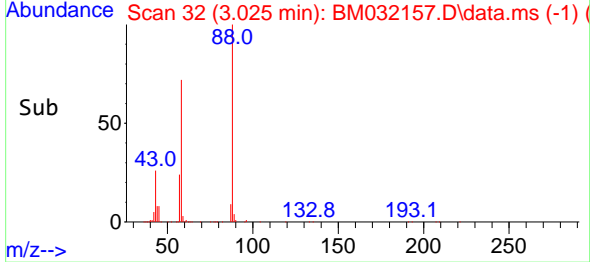
Instrument :
 BNA_M
 ClientSampled :
 GB6Z2



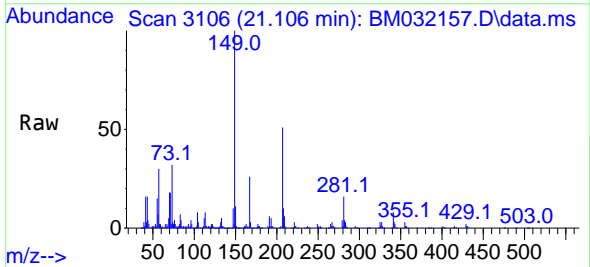
Tgt Ion: 88 Resp: 153624
 Ion Ratio Lower Upper
 88 100
 43 26.6 22.3 33.5
 58 71.5 62.4 93.6

Manual Integrations
 APPROVED

mohammad
 9/27/2021 3:06:23 PM



#86
 Bis(2-ethylhexyl)phthalate
 Concen: 3.306 ng/uL
 RT: 21.106 min Scan# 3106
 Delta R.T. -0.006 min
 Lab File: BM032157.D
 Acq: 25 Sep 2021 16:58



Tgt Ion: 149 Resp: 147859
 Ion Ratio Lower Upper
 149 100
 167 26.0 21.6 32.4
 279 3.7 3.3 4.9

