

Data Path : Z:\svoasrv\HPCHEM1\BNA\_M\Data\BM092521\  
 Data File : BM032153.D  
 Acq On : 25 Sep 2021 14:33  
 Operator : CG/JU  
 Sample : M3919-07  
 Misc :  
 ALS Vial : 10 Sample Multiplier: 1

Instrument :  
 BNA\_M  
 ClientSampleId :  
 GB6Y6

Integration Parameters: LSCINT.P

Integrator: RTE  
 Smoothing : OFF Filtering: 5  
 Sampling : 1 Min Area: 0.1 % of largest Peak  
 Start Thrs: 0.2 Max Peaks: 100  
 Stop Thrs : 0 Peak Location: TOP

If leading or trailing edge < 100 prefer < Baseline drop else tangent >  
 Peak separation: 5

Method : Z:\SVOASRV\HPCHEM1\BNA\_M\METHODS\SFAM-EPA-BM092421.M  
 Title : SVOA CALIBRATION

Signal : TIC: BM032153.D\data.ms

peak #	R.T. min	first scan	max scan	last scan	PK TY	peak height	corr. area	corr. % max.	% of total
1	2.990	22	26	38	rVB	82652	120596	1.09%	0.118%
2	3.284	72	76	80	rBV	20021	28193	0.25%	0.028%
3	3.414	94	98	116	rBV	509812	747474	6.75%	0.732%
4	3.684	135	144	152	rVV2	39741	83427	0.75%	0.082%
5	3.778	155	160	168	rVB	31748	44705	0.40%	0.044%
6	5.737	487	493	498	rVB	10464	16425	0.15%	0.016%
7	6.672	647	652	658	rVB2	14074	23137	0.21%	0.023%
8	6.843	676	681	695	rVV	470226	772303	6.98%	0.756%
9	6.990	698	706	716	rVB	1523550	2300491	20.78%	2.252%
10	7.202	735	742	749	rBV	1544396	2304546	20.82%	2.256%
11	7.260	749	752	758	rVV3	15197	24677	0.22%	0.024%
12	7.313	758	761	766	rVB4	8763	11799	0.11%	0.012%
13	7.666	814	821	828	rBV	1481139	2220223	20.06%	2.174%
14	7.743	831	834	841	rVB3	12306	18914	0.17%	0.019%
15	8.107	892	896	901	rVB2	8170	12461	0.11%	0.012%
16	8.390	935	944	953	rBV	1274734	1960866	17.72%	1.920%
17	8.819	1010	1017	1026	rBV	1760453	2646604	23.91%	2.591%
18	8.996	1043	1047	1052	rVB3	14302	22746	0.21%	0.022%
19	9.307	1092	1100	1105	rBV	55848	85509	0.77%	0.084%
20	9.543	1133	1140	1155	rBV	1333417	2073434	18.73%	2.030%
21	9.784	1177	1181	1189	rVB5	9756	13679	0.12%	0.013%
22	10.090	1225	1233	1245	rBV	2131983	3428211	30.97%	3.356%
23	10.231	1249	1257	1268	rBV	419452	632351	5.71%	0.619%
24	10.460	1285	1296	1303	rBV	2089799	3296821	29.79%	3.228%
25	10.590	1310	1318	1330	rBV	1927789	2992745	27.04%	2.930%
26	11.001	1383	1388	1391	rBV	7880	11571	0.10%	0.011%
27	11.254	1427	1431	1433	rBV5	8580	12473	0.11%	0.012%
28	11.284	1434	1436	1442	rVB5	7864	12818	0.12%	0.013%
29	11.790	1514	1522	1527	rBV	23417	37920	0.34%	0.037%
30	12.048	1559	1566	1573	rBV2	46064	72385	0.65%	0.071%
31	12.313	1607	1611	1615	rVB6	25940	37640	0.34%	0.037%
32	12.513	1640	1645	1651	rVB5	13672	21440	0.19%	0.021%
33	12.672	1664	1672	1677	rBV	15293	22325	0.20%	0.022%
34	12.919	1707	1714	1719	rBV2	20115	31876	0.29%	0.031%
35	13.148	1748	1753	1760	rBV7	10891	19058	0.17%	0.019%
36	13.213	1760	1764	1769	rVB6	13060	21355	0.19%	0.021%

Data Path : Z:\svoasrv\HPCHEM1\BNA\_M\Data\BM092521\  
 Data File : BM032153.D  
 Acq On : 25 Sep 2021 14:33  
 Operator : CG/JU  
 Sample : M3919-07  
 Misc :  
 ALS Vial : 10 Sample Multiplier: 1

Instrument :  
 BNA\_M  
 ClientSampleId :  
 GB6Y6

Integration Parameters: LSCINT.P  
 Integrator: RTE  
 Smoothing : OFF Filtering: 5  
 Sampling : 1 Min Area: 0.1 % of largest Peak  
 Start Thrs: 0.2 Max Peaks: 100  
 Stop Thrs : 0 Peak Location: TOP

If leading or trailing edge < 100 prefer < Baseline drop else tangent >  
 Peak separation: 5

Method : Z:\SVOASRV\HPCHEM1\BNA\_M\METHODS\SFAM-EPA-BM092421.M  
 Title : SVOA CALIBRATION

37	13.272	1772	1774	1782	rVB6	9964	16655	0.15%	0.016%
38	13.713	1842	1849	1855	rBV	4262016	5528065	49.94%	5.412%
39	13.960	1887	1891	1892	rBV3	15975	20111	0.18%	0.020%
40	14.001	1892	1898	1912	rVB	4763232	6590439	59.54%	6.452%
41	14.225	1931	1936	1940	rVB7	8352	11747	0.11%	0.012%
42	14.313	1944	1951	1966	rVB	3240733	4460611	40.30%	4.367%
43	14.454	1970	1975	1978	rBV4	12086	16982	0.15%	0.017%
44	14.507	1978	1984	1998	rVB	398395	550482	4.97%	0.539%
45	14.725	2017	2021	2027	rVB9	7915	14661	0.13%	0.014%
46	15.119	2082	2088	2092	rBV2	42643	59112	0.53%	0.058%
47	15.301	2112	2119	2129	rBV	6219833	8437524	76.23%	8.260%
48	15.413	2132	2138	2154	rBV	1746345	2250243	20.33%	2.203%
49	15.536	2155	2159	2166	rVB2	43321	69399	0.63%	0.068%
50	15.719	2186	2190	2197	rVB3	43214	69330	0.63%	0.068%
51	15.966	2224	2232	2239	rBV10	14379	38181	0.34%	0.037%
52	16.077	2245	2251	2257	rVB5	21327	34234	0.31%	0.034%
53	16.189	2268	2270	2275	rVB6	9166	14531	0.13%	0.014%
54	16.724	2357	2361	2364	rVB5	10146	12763	0.12%	0.012%
55	16.824	2372	2378	2382	rBV2	18598	36613	0.33%	0.036%
56	16.966	2397	2402	2407	rBV7	7611	11897	0.11%	0.012%
57	17.036	2408	2414	2421	rBV	3888975	5224254	47.20%	5.114%
58	17.136	2424	2431	2443	rBV	7061075	9549100	86.27%	9.348%
59	17.319	2458	2462	2465	rBV2	10203	12522	0.11%	0.012%
60	17.401	2473	2476	2480	rBV	8834	11138	0.10%	0.011%
61	17.571	2502	2505	2513	rVB2	7422	14131	0.13%	0.014%
62	17.701	2524	2527	2532	rVB	44692	54101	0.49%	0.053%
63	17.924	2561	2565	2571	rBV4	30561	50031	0.45%	0.049%
64	17.989	2573	2576	2582	rVB	18018	27205	0.25%	0.027%
65	18.242	2615	2619	2622	rVB5	9846	15035	0.14%	0.015%
66	18.895	2727	2730	2734	rBV4	12738	16430	0.15%	0.016%
67	18.983	2741	2745	2752	rBV	68802	98230	0.89%	0.096%
68	19.054	2752	2757	2765	rVV2	91190	138986	1.26%	0.136%
69	19.313	2797	2801	2805	rBV2	24035	29743	0.27%	0.029%
70	19.418	2813	2819	2830	rBV	7895072	11068677	100.00%	10.836%
71	20.901	3067	3071	3075	rBV	326133	391584	3.54%	0.383%
72	21.195	3116	3121	3131	rBV	4413791	5582323	50.43%	5.465%
73	23.230	3460	3467	3479	rVB	5614054	10177721	91.95%	9.964%
74	23.365	3484	3490	3503	rVB2	2908173	5258211	47.51%	5.148%

Sum of corrected areas: 102146200

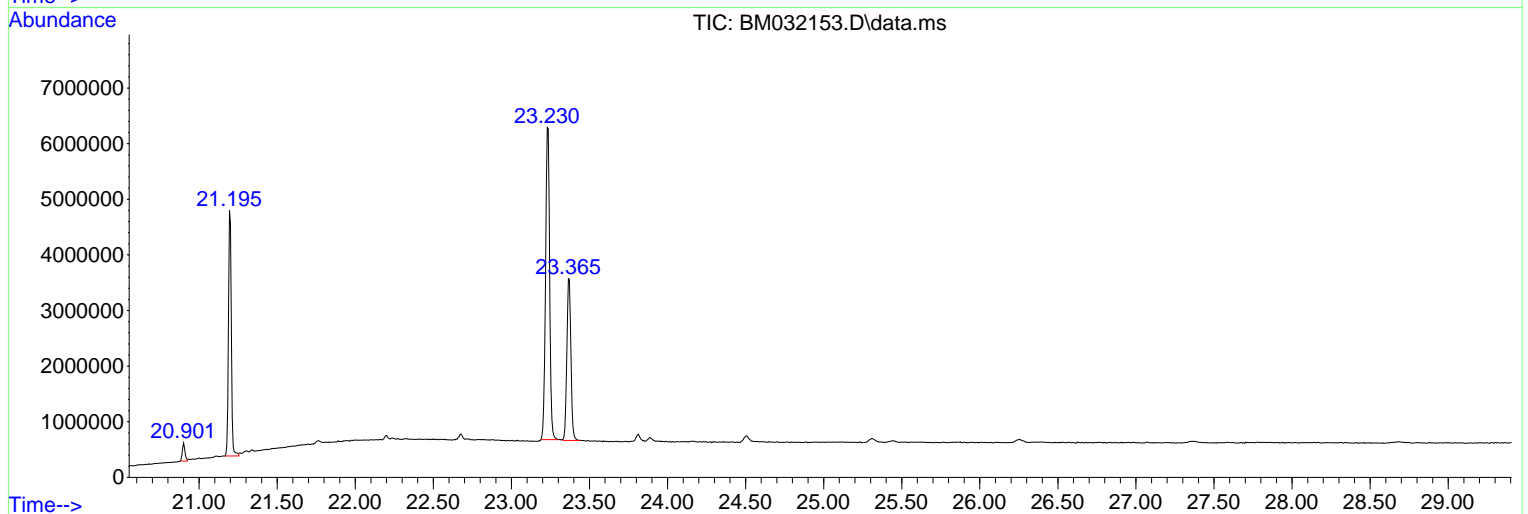
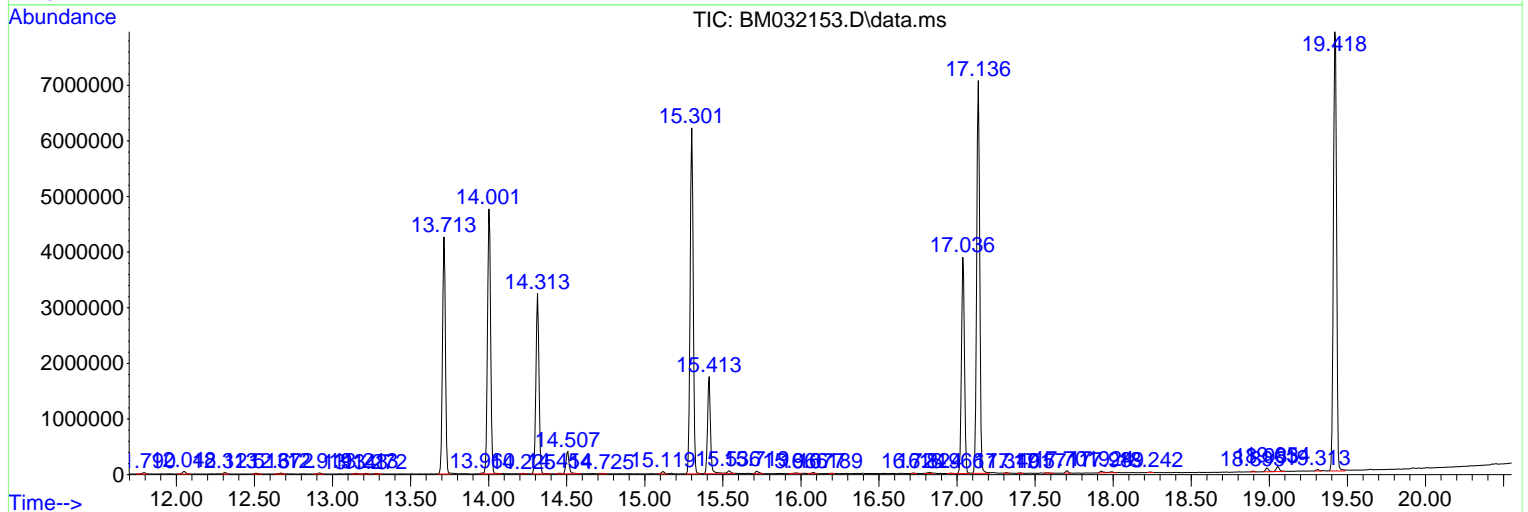
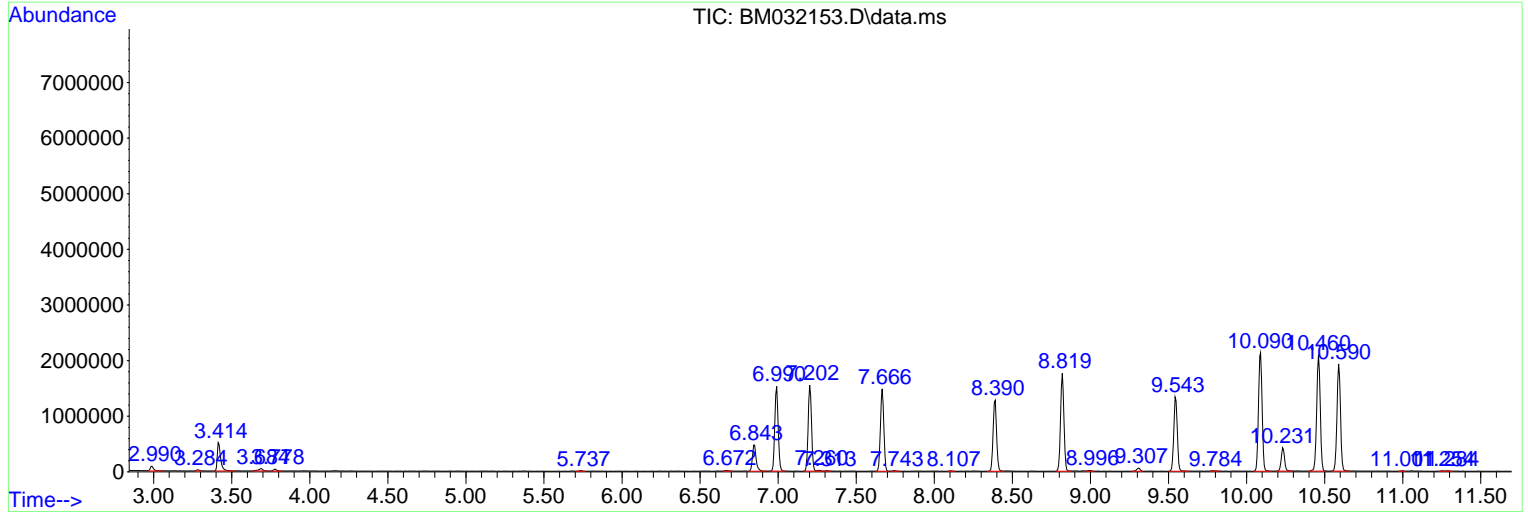
**Instrument :**  
BNA\_M  
**ClientSampleId :**  
GB6Y6

Data Path : Z:\svoasrv\HPCHEM1\BNA\_M\Data\BM092521\  
 Data File : BM032153.D  
 Acq On : 25 Sep 2021 14:33  
 Operator : CG/JU  
 Sample : M3919-07  
 Misc :  
 ALS Vial : 10 Sample Multiplier: 1

**Instrument :**  
 BNA\_M  
**ClientSampleId :**  
 GB6Y6

Quant Method : Z:\SVOASRV\HPCHEM1\BNA\_M\METHODS\SFAM-EPA-BM092421.M  
 Quant Title : SVOA CALIBRATION

TIC Library : C:\Database\NIST20.L  
 TIC Integration Parameters: LSCINT.P



Data Path : Z:\svoasrv\HPCHEM1\BNA\_M\Data\BM092521\  
 Data File : BM032153.D  
 Acq On : 25 Sep 2021 14:33  
 Operator : CG/JU  
 Sample : M3919-07  
 Misc :  
 ALS Vial : 10 Sample Multiplier: 1

Instrument :  
 BNA\_M  
 ClientSampleId :  
 GB6Y6

Quant Method : Z:\SVOASRV\HPCHEM1\BNA\_M\METHODS\SFAM-EPA-BM092421.M  
 Quant Title : SVOA CALIBRATION

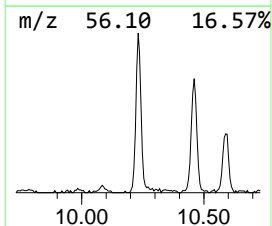
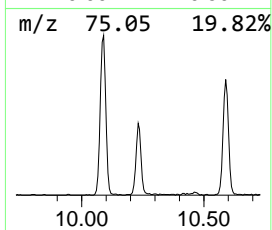
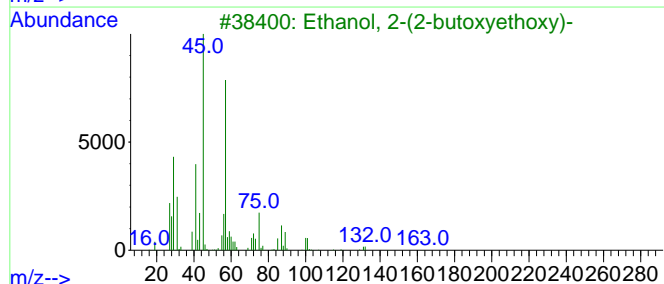
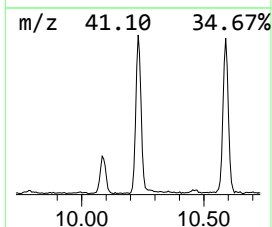
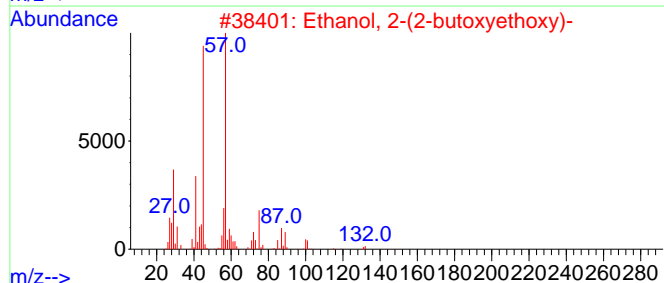
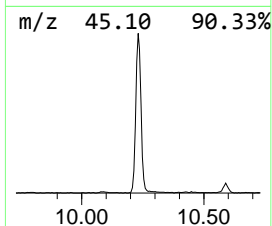
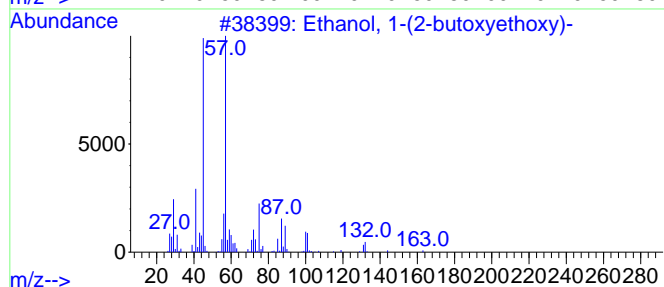
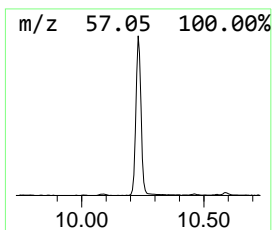
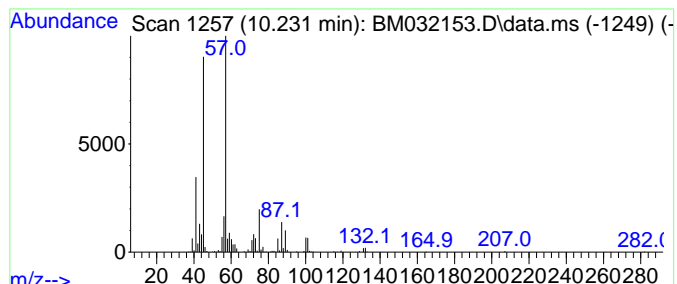
TIC Library : C:\Database\NIST20.L  
 TIC Integration Parameters: LSCINT.P

\*\*\*\*\*  
 Peak Number 1 Ethanol, 1-(2-butoxyethoxy)- Concentration Rank 1

R.T.	EstConc	Area	Relative to ISTD	R.T.
10.231	3.84 ng/ul	632351	Naphthalene-d8	10.460

Hit#	of	5	Tentative ID	MW	MolForm	CAS#	Qual
1			Ethanol, 1-(2-butoxyethoxy)-	162	C8H18O3	054446-78-5	90
2			Ethanol, 2-(2-butoxyethoxy)-	162	C8H18O3	000112-34-5	90
3			Ethanol, 2-(2-butoxyethoxy)-	162	C8H18O3	000112-34-5	90
4			Ethanol, 2-[2-(2-methylpropoxy)e...]	162	C8H18O3	018912-80-6	72
5			Ethanol, 2-(2-butoxyethoxy)-	162	C8H18O3	000112-34-5	72



Data Path : Z:\svoasrv\HPCHEM1\BNA\_M\Data\BM092521\  
Data File : BM032153.D  
Acq On : 25 Sep 2021 14:33  
Operator : CG/JU  
Sample : M3919-07  
Misc :  
ALS Vial : 10 Sample Multiplier: 1

Instrument :  
BNA\_M  
ClientSampleId :  
GB6Y6

Quant Method : Z:\SVOASRV\HPCHEM1\BNA\_M\METHODS\SFAM-EPA-BM092421.M  
Quant Title : SVOA CALIBRATION

TIC Library : C:\Database\NIST20.L  
TIC Integration Parameters: LSCINT.P

TIC Top Hit name	RT	EstConc	Units	Response	--Internal Standard--			
					#	RT	Resp	Conc
Ethanol, 1-(2-b...	10.231	3.8	ng/u1	632351	2	10.460	3296820	20.0