

Data Path : Z:\svoasrv\HPCHEM1\BNA_M\Data\BM092521\
 Data File : BM032155.D
 Acq On : 25 Sep 2021 15:45
 Operator : CG/JU
 Sample : M3919-06
 Misc :
 ALS Vial : 12 Sample Multiplier: 1

Instrument :
 BNA_M
 ClientSampled :
 GB6Y5

Integration Parameters: LSCINT.P
 Integrator: RTE
 Smoothing : OFF Filtering: 5
 Sampling : 1 Min Area: 0.1 % of largest Peak
 Start Thrs: 0.2 Max Peaks: 100
 Stop Thrs : 0 Peak Location: TOP

If leading or trailing edge < 100 prefer < Baseline drop else tangent >
 Peak separation: 5

Method : Z:\SVOASRV\HPCHEM1\BNA_M\METHODS\SFAM-EPA-BM092421.M
 Title : SVOA CALIBRATION

Signal : TIC: BM032155.D\data.ms

peak #	R.T. min	first scan	max scan	last scan	PK TY	peak height	corr. area	corr. % max.	% of total
1	2.990	21	26	30	rBV	96844	132821	1.21%	0.127%
2	3.025	30	32	37	rVB	14712	17845	0.16%	0.017%
3	3.284	71	76	84	rBV	14590	29867	0.27%	0.029%
4	3.419	94	99	112	rBV	462144	689048	6.30%	0.660%
5	3.690	137	145	151	rBV	48132	91666	0.84%	0.088%
6	3.778	156	160	166	rVB	29727	41000	0.37%	0.039%
7	5.737	489	493	497	rVB	12286	16782	0.15%	0.016%
8	6.337	589	595	603	rBV2	18223	29642	0.27%	0.028%
9	6.666	647	651	659	rBV5	9818	17586	0.16%	0.017%
10	6.848	676	682	693	rVB	497168	805713	7.37%	0.772%
11	6.989	699	706	714	rBV	1560984	2326417	21.27%	2.228%
12	7.201	734	742	749	rBV	1595517	2377606	21.74%	2.277%
13	7.266	749	753	758	rVV	13671	24904	0.23%	0.024%
14	7.313	758	761	766	rVB4	9812	15301	0.14%	0.015%
15	7.666	813	821	829	rBV	1642935	2470847	22.59%	2.366%
16	7.742	829	834	842	rVB	47091	68341	0.62%	0.065%
17	8.260	915	922	926	rBV8	7719	15938	0.15%	0.015%
18	8.389	935	944	953	rBV	1367006	2038615	18.64%	1.952%
19	8.819	1010	1017	1025	rVV	1786874	2661463	24.33%	2.549%
20	8.995	1043	1047	1053	rVB7	12572	21150	0.19%	0.020%
21	9.307	1090	1100	1107	rBV	34013	58295	0.53%	0.056%
22	9.548	1132	1141	1148	rBV	1344482	2099099	19.19%	2.010%
23	9.601	1148	1150	1159	rVB8	6890	12164	0.11%	0.012%
24	9.789	1179	1182	1187	rVB7	7198	11071	0.10%	0.011%
25	10.089	1226	1233	1243	rBV	2250482	3473718	31.76%	3.327%
26	10.230	1251	1257	1265	rBV	393860	585485	5.35%	0.561%
27	10.460	1286	1296	1304	rBV	2313880	3646090	33.33%	3.492%
28	10.589	1310	1318	1329	rBV	1870447	2948593	26.96%	2.824%
29	11.789	1516	1522	1529	rVB2	17991	30016	0.27%	0.029%
30	12.048	1561	1566	1573	rVB	46344	72189	0.66%	0.069%
31	12.507	1638	1644	1648	rVB4	7477	12450	0.11%	0.012%
32	12.666	1666	1671	1677	rBV2	13599	21768	0.20%	0.021%
33	12.919	1710	1714	1719	rBV3	20650	30097	0.28%	0.029%
34	13.154	1747	1754	1760	rBV5	12695	23312	0.21%	0.022%
35	13.213	1760	1764	1770	rVV5	15770	26107	0.24%	0.025%
36	13.277	1770	1775	1780	rVV3	9894	15669	0.14%	0.015%

Data Path : Z:\svoasrv\HPCHEM1\BNA_M\Data\BM092521\
 Data File : BM032155.D
 Acq On : 25 Sep 2021 15:45
 Operator : CG/JU
 Sample : M3919-06
 Misc :
 ALS Vial : 12 Sample Multiplier: 1

Instrument :
 BNA_M
 ClientSampleID :
 GB6Y5

Integration Parameters: LSCINT.P

Integrator: RTE
 Smoothing : OFF Filtering: 5
 Sampling : 1 Min Area: 0.1 % of largest Peak
 Start Thrs: 0.2 Max Peaks: 100
 Stop Thrs : 0 Peak Location: TOP

If leading or trailing edge < 100 prefer < Baseline drop else tangent >
 Peak separation: 5

Method : Z:\SVOASRV\HPCHEM1\BNA_M\METHODS\SFAM-EPA-BM092421.M
 Title : SVOA CALIBRATION

37	13.360	1784	1789	1796	rVB	27207	37700	0.34%	0.036%
38	13.713	1842	1849	1855	rBV	4205053	5661021	51.76%	5.422%
39	13.960	1886	1891	1892	rBV3	17618	20424	0.19%	0.020%
40	14.001	1892	1898	1908	rVB	4743304	6681522	61.09%	6.399%
41	14.218	1931	1935	1940	rBV3	8436	12938	0.12%	0.012%
42	14.313	1944	1951	1959	rBV	3605847	4884453	44.66%	4.678%
43	14.460	1972	1976	1978	rBV3	13521	17035	0.16%	0.016%
44	14.507	1978	1984	1992	rBV	401292	550651	5.03%	0.527%
45	14.671	2008	2012	2016	rVB7	7608	11479	0.10%	0.011%
46	14.718	2016	2020	2027	rBV8	10342	16392	0.15%	0.016%
47	15.118	2083	2088	2093	rBV2	36768	52873	0.48%	0.051%
48	15.171	2093	2097	2101	rVB3	12232	14213	0.13%	0.014%
49	15.301	2112	2119	2132	rBV	6311424	8553042	78.20%	8.191%
50	15.412	2132	2138	2153	rBV	1774899	2249952	20.57%	2.155%
51	15.536	2155	2159	2165	rVB	43516	65364	0.60%	0.063%
52	15.718	2185	2190	2197	rVB3	48525	75652	0.69%	0.072%
53	15.971	2226	2233	2238	rBV9	17286	33939	0.31%	0.033%
54	16.024	2239	2242	2245	rVV5	11655	16220	0.15%	0.016%
55	16.077	2248	2251	2257	rVB4	22591	31879	0.29%	0.031%
56	16.195	2264	2271	2274	rBV7	9183	18790	0.17%	0.018%
57	16.648	2343	2348	2353	rVB3	7588	13700	0.13%	0.013%
58	16.718	2356	2360	2365	rBV7	10766	15676	0.14%	0.015%
59	16.824	2371	2378	2382	rBV3	21782	45616	0.42%	0.044%
60	16.959	2396	2401	2406	rVB8	7654	12322	0.11%	0.012%
61	17.036	2408	2414	2421	rBV	4080353	5668436	51.82%	5.429%
62	17.136	2424	2431	2444	rBV	6931121	9571513	87.51%	9.167%
63	17.318	2458	2462	2466	rBV	11290	14063	0.13%	0.013%
64	17.406	2471	2477	2483	rBV	158221	206470	1.89%	0.198%
65	17.571	2501	2505	2509	rVB3	10581	15878	0.15%	0.015%
66	17.706	2524	2528	2532	rVB	42230	50933	0.47%	0.049%
67	17.924	2561	2565	2570	rBV5	32153	53393	0.49%	0.051%
68	17.989	2573	2576	2582	rVB	19122	29066	0.27%	0.028%
69	18.242	2616	2619	2625	rVB5	13388	21636	0.20%	0.021%
70	18.800	2711	2714	2721	rVB4	19385	25927	0.24%	0.025%
71	18.865	2723	2725	2729	rVB5	12458	14569	0.13%	0.014%
72	18.983	2741	2745	2750	rBV	66944	93739	0.86%	0.090%
73	19.053	2753	2757	2762	rVV	92854	123624	1.13%	0.118%
74	19.312	2797	2801	2804	rVB	24493	30353	0.28%	0.029%
75	19.418	2813	2819	2833	rBV	8155690	10938065	100.00%	10.475%
76	20.900	3068	3071	3078	rBV2	237254	283759	2.59%	0.272%

Data Path : Z:\svoasrv\HPCHEM1\BNA_M\Data\BM092521\
Data File : BM032155.D
Acq On : 25 Sep 2021 15:45
Operator : CG/JU
Sample : M3919-06
Misc :
ALS Vial : 12 Sample Multiplier: 1

Instrument :
BNA_M
ClientSampleId :
GB6Y5

Integration Parameters: LSCINT.P
Integrator: RTE
Smoothing : OFF Filtering: 5
Sampling : 1 Min Area: 0.1 % of largest Peak
Start Thrs: 0.2 Max Peaks: 100
Stop Thrs : 0 Peak Location: TOP

If leading or trailing edge < 100 prefer < Baseline drop else tangent >
Peak separation: 5

Method : Z:\SVOASRV\HPCHEM1\BNA_M\METHODS\SFAM-EPA-BM092421.M
Title : SVOA CALIBRATION

77	21.200	3117	3122	3133	rBV	4607007	5797154	53.00%	5.552%
78	22.012	3257	3260	3265	rVB3	216338	256466	2.34%	0.246%
79	23.230	3460	3467	3483	rVV	5352312	9739520	89.04%	9.328%
80	23.371	3485	3491	3503	rVB	3105817	5430509	49.65%	5.201%

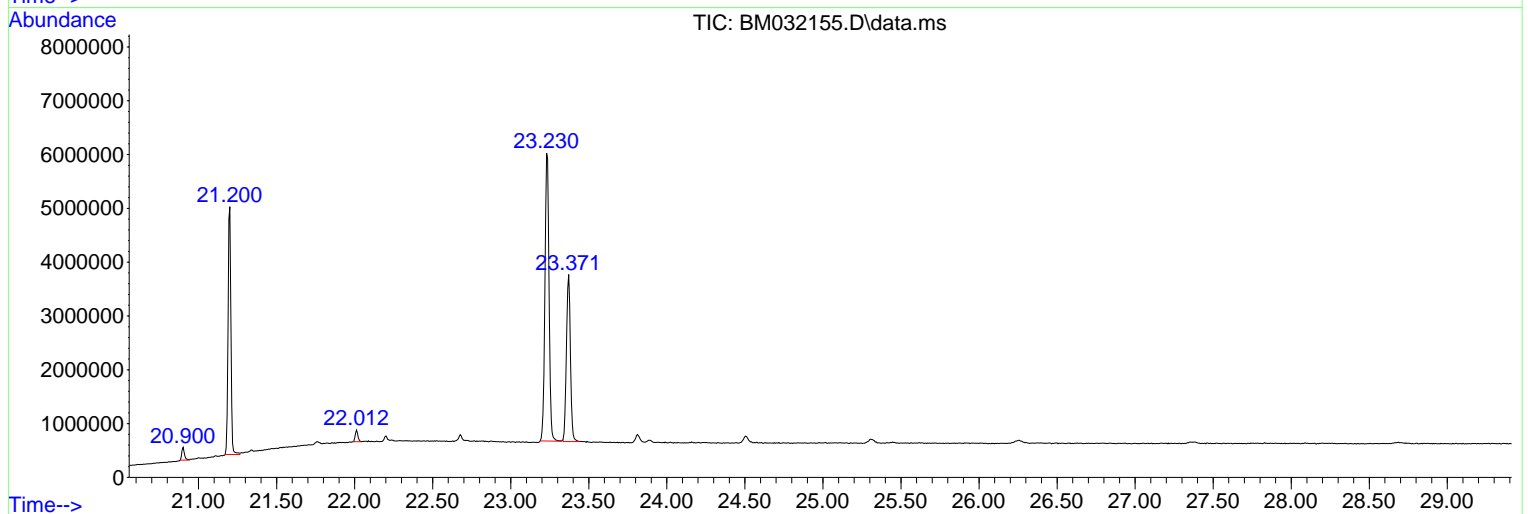
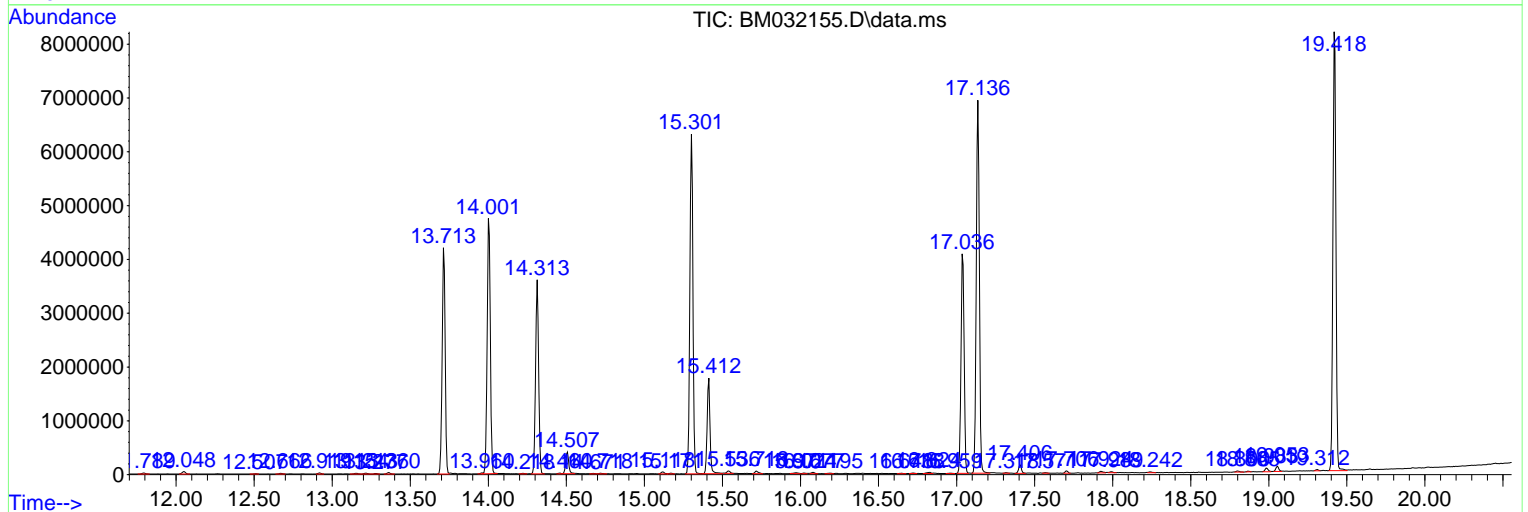
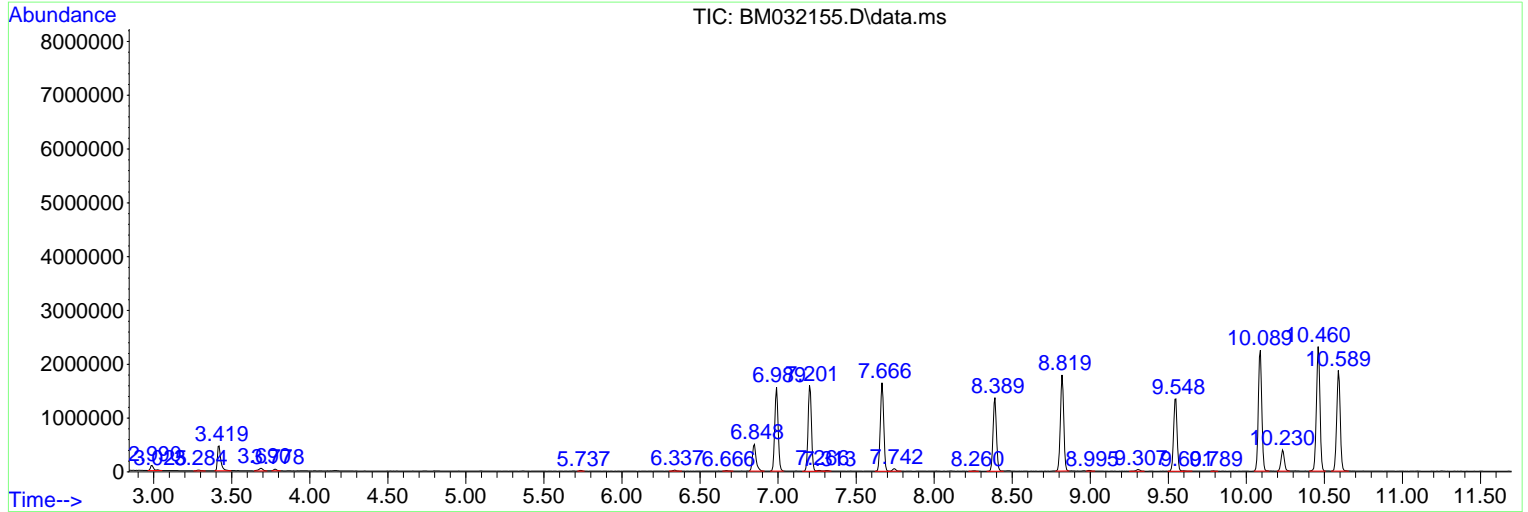
Sum of corrected areas: 104416601

Data Path : Z:\svoasrv\HPCHEM1\BNA_M\Data\BM092521\
 Data File : BM032155.D
 Acq On : 25 Sep 2021 15:45
 Operator : CG/JU
 Sample : M3919-06
 Misc :
 ALS Vial : 12 Sample Multiplier: 1

Instrument :
 BNA_M
ClientSampleId :
 GB6Y5

Quant Method : Z:\SVOASRV\HPCHEM1\BNA_M\METHODS\SFAM-EPA-BM092421.M
 Quant Title : SVOA CALIBRATION

TIC Library : C:\Database\NIST20.L
 TIC Integration Parameters: LSCINT.P



Data Path : Z:\svoasrv\HPCHEM1\BNA_M\Data\BM092521\
 Data File : BM032155.D
 Acq On : 25 Sep 2021 15:45
 Operator : CG/JU
 Sample : M3919-06
 Misc :
 ALS Vial : 12 Sample Multiplier: 1

Instrument :
 BNA_M
 ClientSampleId :
 GB6Y5

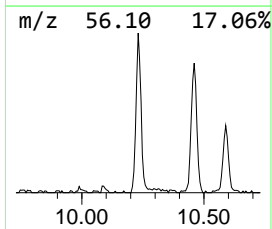
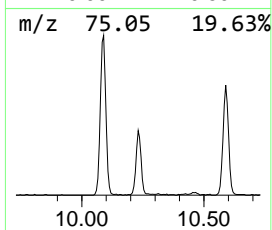
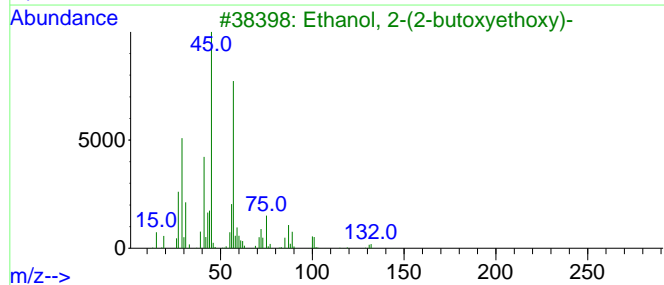
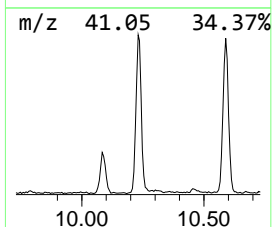
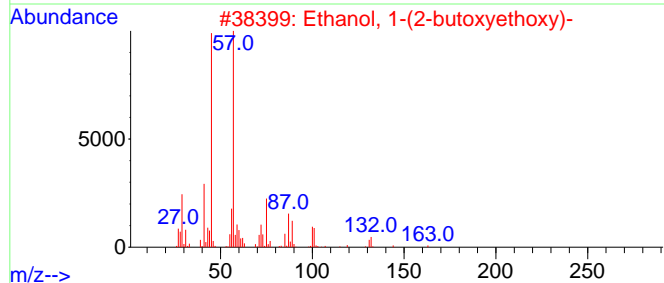
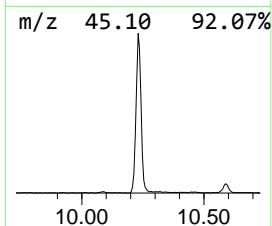
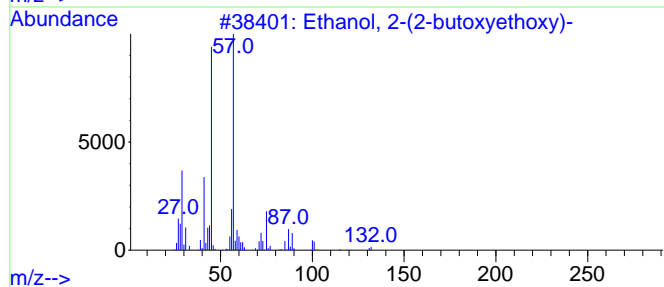
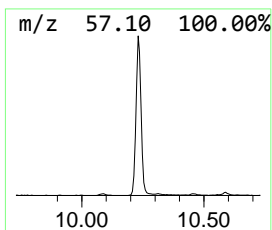
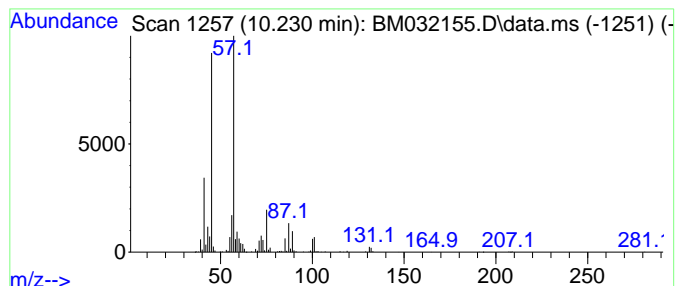
Quant Method : Z:\SVOASRV\HPCHEM1\BNA_M\METHODS\SFAM-EPA-BM092421.M
 Quant Title : SVOA CALIBRATION

TIC Library : C:\Database\NIST20.L
 TIC Integration Parameters: LSCINT.P

 Peak Number 1 Ethanol, 2-(2-butoxyethoxy)- Concentration Rank 1

R.T.	EstConc	Area	Relative to ISTD	R.T.
10.230	3.21 ng/ul	585485	Naphthalene-d8	10.460

Hit#	of 5	Tentative ID	MW	MolForm	CAS#	Qual
1		Ethanol, 2-(2-butoxyethoxy)-	162	C8H18O3	000112-34-5	90
2		Ethanol, 1-(2-butoxyethoxy)-	162	C8H18O3	054446-78-5	83
3		Ethanol, 2-(2-butoxyethoxy)-	162	C8H18O3	000112-34-5	72
4		Ethanol, 2-(2-butoxyethoxy)-	162	C8H18O3	000112-34-5	72
5		Ethanol, 2-(2-butoxyethoxy)-	162	C8H18O3	000112-34-5	72



Data Path : Z:\svoasrv\HPCHEM1\BNA_M\Data\BM092521\
Data File : BM032155.D
Acq On : 25 Sep 2021 15:45
Operator : CG/JU
Sample : M3919-06
Misc :
ALS Vial : 12 Sample Multiplier: 1

Instrument :
BNA_M
ClientSampleId :
GB6Y5

Quant Method : Z:\SVOASRV\HPCHEM1\BNA_M\METHODS\SFAM-EPA-BM092421.M
Quant Title : SVOA CALIBRATION

TIC Library : C:\Database\NIST20.L
TIC Integration Parameters: LSCINT.P

TIC Top Hit name	RT	EstConc	Units	Response	--Internal Standard--			
					#	RT	Resp	Conc
Ethanol, 2-(2-b...	10.230	3.2	ng/u1	585485	2	10.460	3646090	20.0