

Data Path : Z:\svoasrv\HPCHEM1\BNA\_M\Data\BM092521\  
 Data File : BM032174.D  
 Acq On : 26 Sep 2021 03:53  
 Operator : CG/JU  
 Sample : M3919-16  
 Misc :  
 ALS Vial : 30 Sample Multiplier: 1

Instrument :  
 BNA\_M  
 ClientSampled :  
 GB6Z5

Integration Parameters: LSCINT.P

Integrator: RTE  
 Smoothing : OFF Filtering: 5  
 Sampling : 1 Min Area: 0.1 % of largest Peak  
 Start Thrs: 0.2 Max Peaks: 100  
 Stop Thrs : 0 Peak Location: TOP

If leading or trailing edge < 100 prefer < Baseline drop else tangent >  
 Peak separation: 5

Method : Z:\SVOASRV\HPCHEM1\BNA\_M\METHODS\SFAM-EPA-BM092421.M  
 Title : SVOA CALIBRATION

Signal : TIC: BM032174.D\data.ms

peak #	R.T. min	first scan	max scan	last scan	PK TY	peak height	corr. area	corr. % max.	% of total
1	2.961	17	21	22	rBV4	15305	18798	0.21%	0.016%
2	2.990	22	26	28	rVV	133135	156118	1.75%	0.136%
3	3.025	28	32	44	rVB	492476	618647	6.95%	0.539%
4	3.184	55	59	62	rVB	15506	16741	0.19%	0.015%
5	3.290	72	77	82	rBV	13636	20170	0.23%	0.018%
6	3.419	95	99	113	rBV2	629551	1044090	11.73%	0.910%
7	3.690	136	145	151	rBV2	52568	101736	1.14%	0.089%
8	3.778	155	160	171	rVB	94961	130763	1.47%	0.114%
9	4.260	238	242	247	rVB6	7659	13623	0.15%	0.012%
10	4.743	318	324	329	rBV4	9410	14805	0.17%	0.013%
11	4.943	353	358	366	rVB	93302	136456	1.53%	0.119%
12	5.149	387	393	397	rBV3	8958	13714	0.15%	0.012%
13	5.307	413	420	425	rVB	18573	29939	0.34%	0.026%
14	5.660	476	480	488	rBV2	15443	29193	0.33%	0.025%
15	6.154	558	564	572	rVB	38851	58642	0.66%	0.051%
16	6.337	587	595	601	rBV	69386	112261	1.26%	0.098%
17	6.672	647	652	659	rVB2	15181	26204	0.29%	0.023%
18	6.849	675	682	692	rBV2	641963	1128852	12.68%	0.984%
19	6.990	699	706	720	rVB	1871295	2839638	31.89%	2.475%
20	7.201	735	742	750	rBV	2004282	2966136	33.31%	2.585%
21	7.272	750	754	758	rVV3	34242	55306	0.62%	0.048%
22	7.313	758	761	767	rVB5	14524	21891	0.25%	0.019%
23	7.396	770	775	780	rBV	16877	25073	0.28%	0.022%
24	7.560	797	803	807	rBV2	14671	25132	0.28%	0.022%
25	7.666	814	821	831	rBV	1755440	2719890	30.54%	2.371%
26	8.025	876	882	887	rBV	123764	197121	2.21%	0.172%
27	8.384	935	943	952	rBV	1612175	2494393	28.01%	2.174%
28	8.466	952	957	966	rVB5	18034	40693	0.46%	0.035%
29	8.619	979	983	992	rBV	68281	106547	1.20%	0.093%
30	8.766	1003	1008	1011	rBV	127001	183810	2.06%	0.160%
31	8.819	1011	1017	1023	rVV	2124807	3213253	36.09%	2.801%
32	8.872	1023	1026	1035	rVB	84022	121114	1.36%	0.106%
33	9.301	1092	1099	1105	rVB3	39660	72811	0.82%	0.063%
34	9.542	1133	1140	1148	rBV	1659220	2525508	28.36%	2.201%
35	9.784	1172	1181	1186	rBV	103182	161809	1.82%	0.141%
36	9.825	1186	1188	1193	rVB	12170	17885	0.20%	0.016%

Data Path : Z:\svoasrv\HPCHEM1\BNA\_M\Data\BM092521\  
 Data File : BM032174.D  
 Acq On : 26 Sep 2021 03:53  
 Operator : CG/JU  
 Sample : M3919-16  
 Misc :  
 ALS Vial : 30 Sample Multiplier: 1

Instrument :  
 BNA\_M  
 ClientSampleId :  
 GB6Z5

Integration Parameters: LSCINT.P  
 Integrator: RTE  
 Smoothing : OFF Filtering: 5  
 Sampling : 1 Min Area: 0.1 % of largest Peak  
 Start Thrs: 0.2 Max Peaks: 100  
 Stop Thrs : 0 Peak Location: TOP

If leading or trailing edge < 100 prefer < Baseline drop else tangent >  
 Peak separation: 5

Method : Z:\SVOASRV\HPCHEM1\BNA\_M\METHODS\SFAM-EPA-BM092421.M  
 Title : SVOA CALIBRATION

37	10.084	1225	1232	1242	rBV	2563071	4050972	45.49%	3.531%
38	10.231	1252	1257	1266	rBV	298337	429523	4.82%	0.374%
39	10.460	1285	1296	1303	rBV	2347982	3765970	42.29%	3.282%
40	10.589	1308	1318	1332	rBV	2283082	3631216	40.78%	3.165%
41	11.254	1426	1431	1436	rBV2	19360	32627	0.37%	0.028%
42	11.678	1495	1503	1508	rBV5	62000	125049	1.40%	0.109%
43	11.795	1514	1523	1531	rBV4	21593	46046	0.52%	0.040%
44	12.048	1560	1566	1572	rBV2	53571	85857	0.96%	0.075%
45	12.425	1625	1630	1634	rBV	15338	22856	0.26%	0.020%
46	12.666	1664	1671	1676	rBV4	20398	31836	0.36%	0.028%
47	12.725	1676	1681	1693	rBV	554337	790510	8.88%	0.689%
48	12.913	1709	1713	1719	rVB	25213	37160	0.42%	0.032%
49	13.154	1749	1754	1759	rVV4	25053	39397	0.44%	0.034%
50	13.213	1759	1764	1769	rVV7	12023	20243	0.23%	0.018%
51	13.278	1769	1775	1780	rVB4	11725	20369	0.23%	0.018%
52	13.360	1782	1789	1796	rVB	2900404	3949363	44.35%	3.442%
53	13.713	1842	1849	1855	rBV	4250587	5669398	63.67%	4.941%
54	13.760	1855	1857	1865	rVB6	13091	28811	0.32%	0.025%
55	13.960	1885	1891	1892	rBV3	22371	31989	0.36%	0.028%
56	14.001	1892	1898	1906	rVB	5057332	6999555	78.61%	6.101%
57	14.313	1944	1951	1960	rBV	3114300	4473162	50.23%	3.899%
58	14.430	1966	1971	1978	rBV	82979	113822	1.28%	0.099%
59	14.507	1978	1984	1989	rVV	404826	557467	6.26%	0.486%
60	14.554	1989	1992	1998	rVB	50170	69946	0.79%	0.061%
61	14.724	2015	2021	2026	rBV7	10283	19062	0.21%	0.017%
62	14.924	2051	2055	2066	rBV	41191	67360	0.76%	0.059%
63	15.042	2069	2075	2082	rVV	70680	111210	1.25%	0.097%
64	15.113	2082	2087	2092	rVV	88274	124233	1.40%	0.108%
65	15.166	2094	2096	2100	rVV5	14148	15890	0.18%	0.014%
66	15.236	2104	2108	2112	rVB3	14879	23136	0.26%	0.020%
67	15.301	2112	2119	2130	rBV	5914974	8410913	94.46%	7.331%
68	15.407	2132	2137	2152	rVV	1640485	2147080	24.11%	1.871%
69	15.536	2155	2159	2160	rVV	53100	69098	0.78%	0.060%
70	15.560	2160	2163	2168	rVV	75833	109278	1.23%	0.095%
71	15.595	2168	2169	2173	rVV2	13215	14531	0.16%	0.013%
72	15.654	2175	2179	2185	rVV	27572	44591	0.50%	0.039%
73	15.713	2185	2189	2196	rVB5	16400	31411	0.35%	0.027%
74	16.071	2248	2250	2257	rVB4	17539	26527	0.30%	0.023%
75	16.295	2280	2288	2294	rBV2	42276	95771	1.08%	0.083%
76	16.395	2294	2305	2309	rVV2	62633	110158	1.24%	0.096%

Data Path : Z:\svoasrv\HPCHEM1\BNA\_M\Data\BM092521\  
 Data File : BM032174.D  
 Acq On : 26 Sep 2021 03:53  
 Operator : CG/JU  
 Sample : M3919-16  
 Misc :  
 ALS Vial : 30 Sample Multiplier: 1

Instrument :  
 BNA\_M  
 ClientSampleId :  
 GB6Z5

Integration Parameters: LSCINT.P  
 Integrator: RTE  
 Smoothing : OFF Filtering: 5  
 Sampling : 1 Min Area: 0.1 % of largest Peak  
 Start Thrs: 0.2 Max Peaks: 100  
 Stop Thrs : 0 Peak Location: TOP

If leading or trailing edge < 100 prefer < Baseline drop else tangent >  
 Peak separation: 5

Method : Z:\SVOASRV\HPCHEM1\BNA\_M\METHODS\SFAM-EPA-BM092421.M  
 Title : SVOA CALIBRATION

77	16.718	2355	2360	2366	rBV6	12649	22549	0.25%	0.020%
78	16.824	2371	2378	2380	rBV4	18498	37091	0.42%	0.032%
79	16.918	2390	2394	2398	rBV2	23259	30811	0.35%	0.027%
80	16.954	2398	2400	2405	rVV4	20333	23269	0.26%	0.020%
81	17.036	2408	2414	2423	rVV	3473092	4575796	51.39%	3.988%
82	17.130	2424	2430	2441	rBV	6085813	8495304	95.40%	7.404%
83	17.213	2441	2444	2449	rVB7	17454	28542	0.32%	0.025%
84	17.313	2458	2461	2466	rBV	16530	26319	0.30%	0.023%
85	17.407	2471	2477	2489	rBV	6147611	7688948	86.35%	6.702%
86	17.624	2509	2514	2522	rVB9	16768	38366	0.43%	0.033%
87	17.701	2523	2527	2531	rVB	42885	45811	0.51%	0.040%
88	17.883	2555	2558	2561	rBV4	12395	17662	0.20%	0.015%
89	17.924	2561	2565	2571	rVV8	17835	35991	0.40%	0.031%
90	17.989	2572	2576	2580	rVB	22600	29976	0.34%	0.026%
91	18.095	2591	2594	2598	rVB2	20202	24635	0.28%	0.021%
92	18.224	2612	2616	2617	rBV3	12672	16472	0.18%	0.014%
93	18.983	2741	2745	2750	rBV2	53879	76757	0.86%	0.067%
94	19.054	2753	2757	2763	rVB	77482	105850	1.19%	0.092%
95	19.307	2797	2800	2804	rVB	19155	23154	0.26%	0.020%
96	19.418	2813	2819	2824	rBV	6951750	8904581	100.00%	7.761%
97	20.895	3067	3070	3075	rBV2	173221	216474	2.43%	0.189%
98	21.195	3116	3121	3128	rBV	3361047	4127824	46.36%	3.598%
99	23.224	3459	3466	3478	rVB	4458679	8163858	91.68%	7.115%
100	23.359	3484	3489	3503	rVB	2323938	4076099	45.78%	3.553%

Sum of corrected areas: 114734294



Data Path : Z:\svoasrv\HPCHEM1\BNA\_M\Data\BM092521\  
 Data File : BM032174.D  
 Acq On : 26 Sep 2021 03:53  
 Operator : CG/JU  
 Sample : M3919-16  
 Misc :  
 ALS Vial : 30 Sample Multiplier: 1

Instrument :  
 BNA\_M  
 ClientSampleId :  
 GB6Z5

Quant Method : Z:\SVOASRV\HPCHEM1\BNA\_M\METHODS\SFAM-EPA-BM092421.M  
 Quant Title : SVOA CALIBRATION

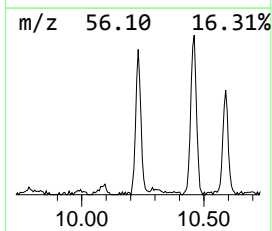
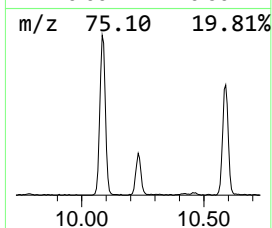
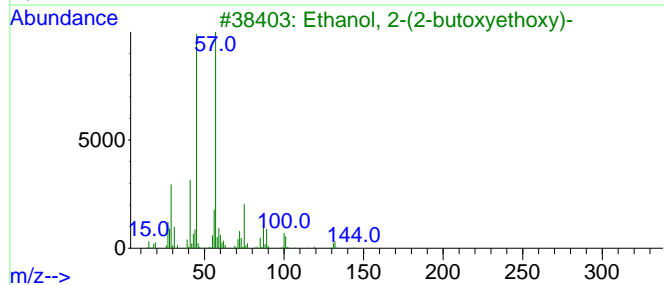
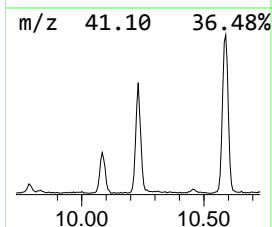
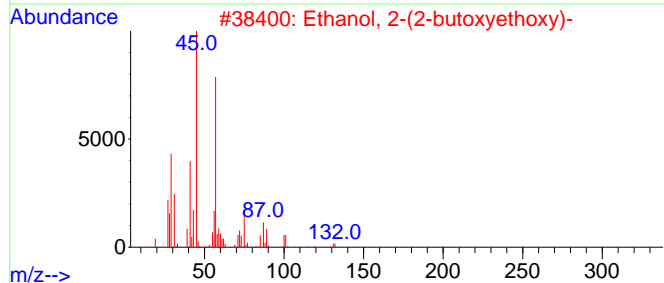
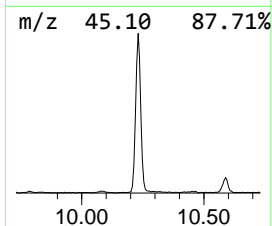
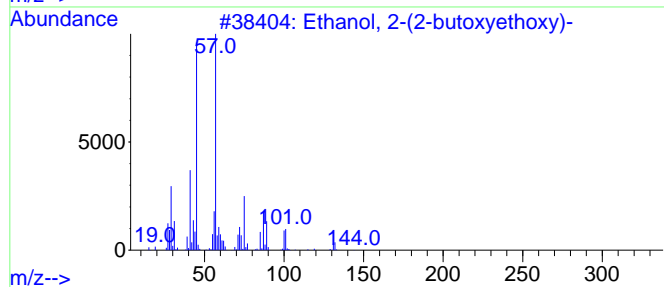
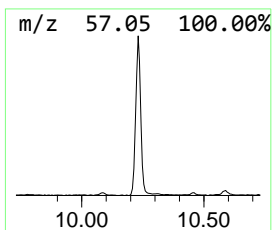
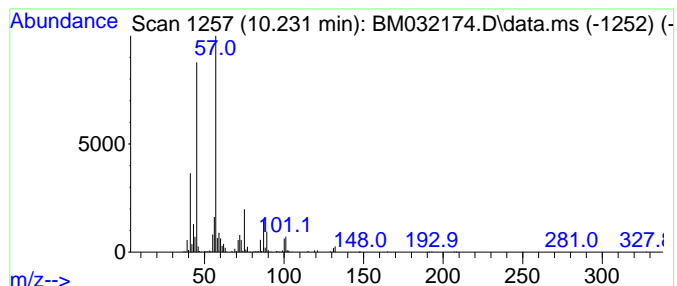
TIC Library : C:\Database\NIST20.L  
 TIC Integration Parameters: LSCINT.P

\*\*\*\*\*  
 Peak Number 1 Ethanol, 2-(2-butoxyethoxy)- Concentration Rank 4

R.T.	EstConc	Area	Relative to ISTD	R.T.
10.231	2.28 ng/ul	429523	Naphthalene-d8	10.460

Hit#	of	5	Tentative ID	MW	MolForm	CAS#	Qual
1			Ethanol, 2-(2-butoxyethoxy)-	162	C8H18O3	000112-34-5	91
2			Ethanol, 2-(2-butoxyethoxy)-	162	C8H18O3	000112-34-5	90
3			Ethanol, 2-(2-butoxyethoxy)-	162	C8H18O3	000112-34-5	90
4			Ethanol, 2-(2-butoxyethoxy)-	162	C8H18O3	000112-34-5	90
5			Ethanol, 2-(2-butoxyethoxy)-	162	C8H18O3	000112-34-5	64



Data Path : Z:\svoasrv\HPCHEM1\BNA\_M\Data\BM092521\  
 Data File : BM032174.D  
 Acq On : 26 Sep 2021 03:53  
 Operator : CG/JU  
 Sample : M3919-16  
 Misc :  
 ALS Vial : 30 Sample Multiplier: 1

Instrument :  
 BNA\_M  
 ClientSampleID :  
 GB6Z5

Quant Method : Z:\SVOASRV\HPCHEM1\BNA\_M\METHODS\SFAM-EPA-BM092421.M  
 Quant Title : SVOA CALIBRATION

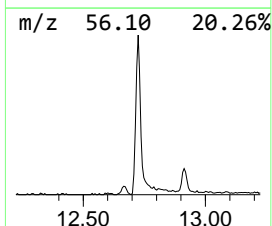
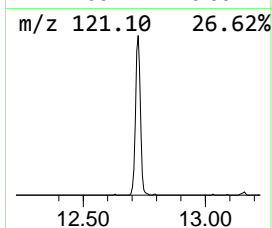
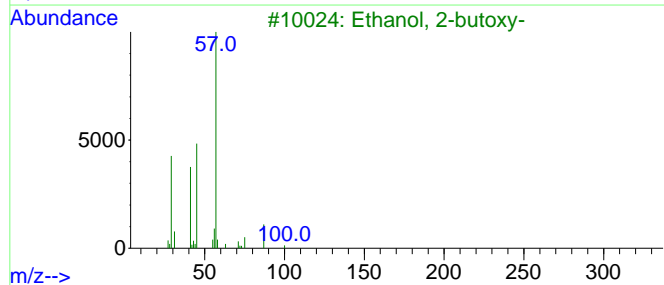
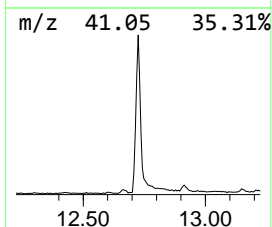
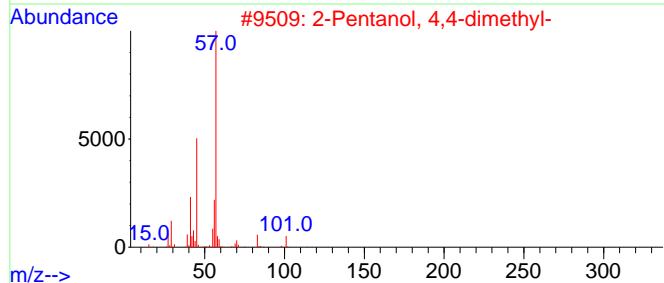
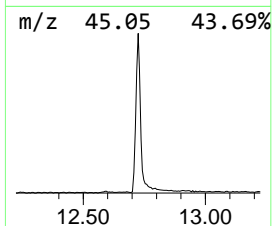
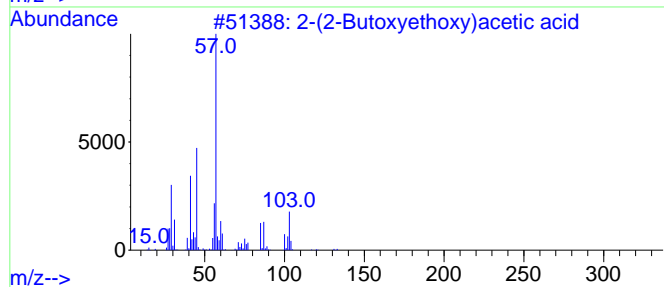
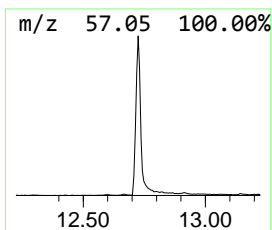
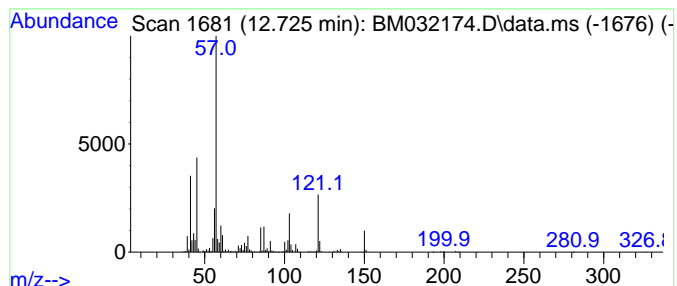
TIC Library : C:\Database\NIST20.L  
 TIC Integration Parameters: LSCINT.P

\*\*\*\*\*  
 Peak Number 2 2-(2-Butoxyethoxy)acetic acid Concentration Rank 3

R.T.	EstConc	Area	Relative to ISTD	R.T.
12.725	3.53 ng/ul	790510	Acenaphthene-d10	14.313

Hit#	of	5	Tentative ID	MW	MolForm	CAS#	Qual
1			2-(2-Butoxyethoxy)acetic acid	176	C8H16O4	082941-26-2	59
2			2-Pentanol, 4,4-dimethyl-	116	C7H16O	006144-93-0	43
3			Ethanol, 2-butoxy-	118	C6H14O2	000111-76-2	38
4			Ethanol, 2-butoxy-	118	C6H14O2	000111-76-2	38
5			2-Pentanol, 4,4-dimethyl-	116	C7H16O	006144-93-0	37



Data Path : Z:\svoasrv\HPCHEM1\BNA\_M\Data\BM092521\  
 Data File : BM032174.D  
 Acq On : 26 Sep 2021 03:53  
 Operator : CG/JU  
 Sample : M3919-16  
 Misc :  
 ALS Vial : 30 Sample Multiplier: 1

Instrument :  
 BNA\_M  
 ClientSampleId :  
 GB6Z5

Quant Method : Z:\SVOASRV\HPCHEM1\BNA\_M\METHODS\SFAM-EPA-BM092421.M  
 Quant Title : SVOA CALIBRATION

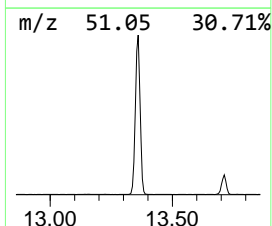
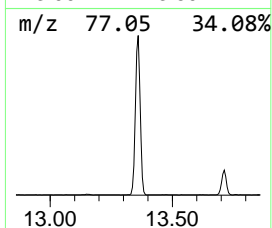
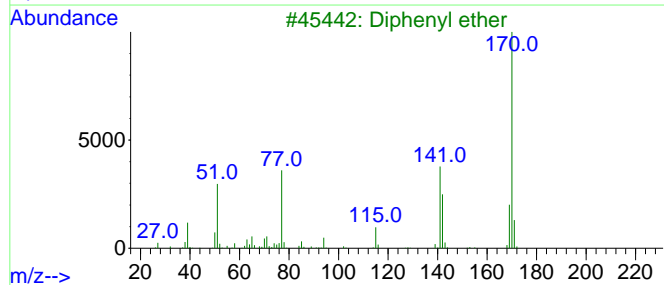
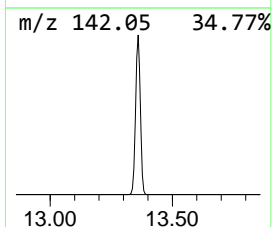
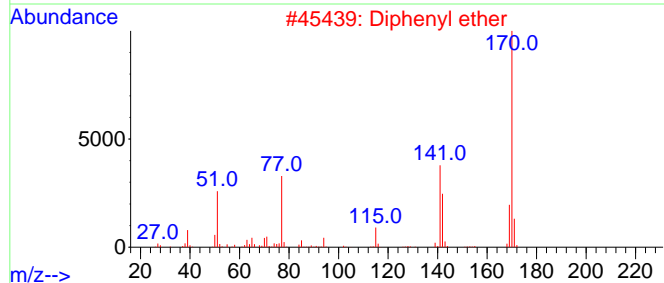
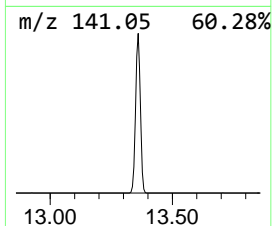
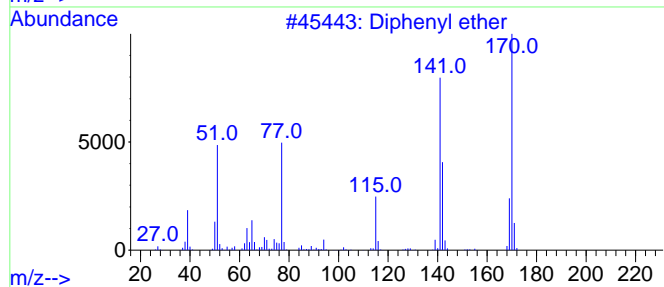
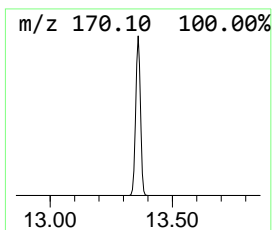
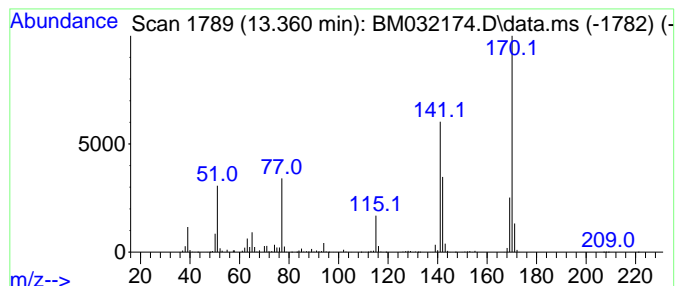
TIC Library : C:\Database\NIST20.L  
 TIC Integration Parameters: LSCINT.P

\*\*\*\*\*  
 Peak Number 3 Diphenyl ether Concentration Rank 2

R.T.	EstConc	Area	Relative to ISTD	R.T.
13.360	17.66 ng/ul	3949360	Acenaphthene-d10	14.313

Hit#	of	5	Tentative ID	MW	MolForm	CAS#	Qual
1			Diphenyl ether	170	C12H10O	000101-84-8	96
2			Diphenyl ether	170	C12H10O	000101-84-8	93
3			Diphenyl ether	170	C12H10O	000101-84-8	90
4			Diphenyl ether	170	C12H10O	000101-84-8	83
5			Spiro[cyclopropane-1,1'(4'H)-nap...	170	C12H10O	033498-24-7	74



Data Path : Z:\svoasrv\HPCHEM1\BNA\_M\Data\BM092521\  
 Data File : BM032174.D  
 Acq On : 26 Sep 2021 03:53  
 Operator : CG/JU  
 Sample : M3919-16  
 Misc :  
 ALS Vial : 30 Sample Multiplier: 1

Instrument :  
 BNA\_M  
 ClientSampleID :  
 GB6Z5

Quant Method : Z:\SVOASRV\HPCHEM1\BNA\_M\METHODS\SFAM-EPA-BM092421.M  
 Quant Title : SVOA CALIBRATION

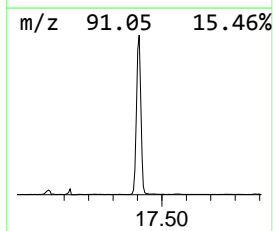
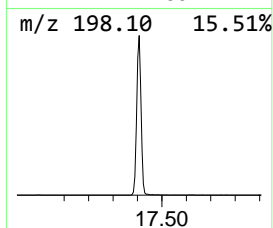
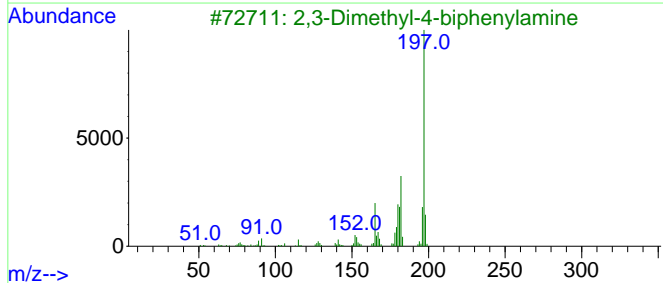
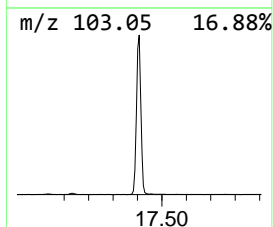
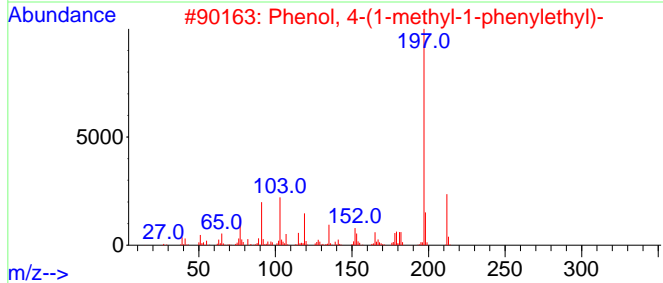
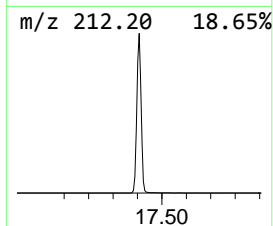
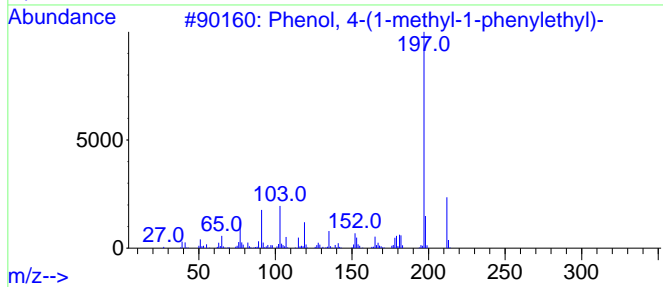
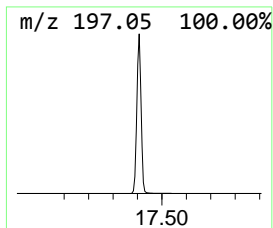
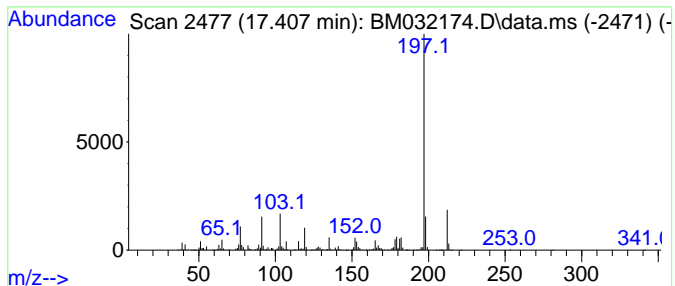
TIC Library : C:\Database\NIST20.L  
 TIC Integration Parameters: LSCINT.P

\*\*\*\*\*  
 Peak Number 4 Phenol, 4-(1-methyl-1-pheny... Concentration Rank 1

R.T.	EstConc	Area	Relative to ISTD	R.T.
17.407	33.61 ng/ul	7688950	Phenanthrene-d10	17.036

Hit#	of	5	Tentative ID	MW	MolForm	CAS#	Qual
1			Phenol, 4-(1-methyl-1-phenylethyl)-	212	C15H16O	000599-64-4	99
2			Phenol, 4-(1-methyl-1-phenylethyl)-	212	C15H16O	000599-64-4	96
3			2,3-Dimethyl-4-biphenylamine	197	C14H15N	022750-87-4	70
4			Dimethyl diphenylsilane	212	C14H16Si	000778-24-5	62
5			Phenol, 4-(1-methyl-1-phenylethyl)-	212	C15H16O	000599-64-4	58





Data Path : Z:\svoasrv\HPCHEM1\BNA\_M\Data\BM092521\  
Data File : BM032174.D  
Acq On : 26 Sep 2021 03:53  
Operator : CG/JU  
Sample : M3919-16  
Misc :  
ALS Vial : 30 Sample Multiplier: 1

Instrument :  
BNA\_M  
ClientSampleId :  
GB6Z5

Quant Method : Z:\SVOASRV\HPCHEM1\BNA\_M\METHODS\SFAM-EPA-BM092421.M  
Quant Title : SVOA CALIBRATION

TIC Library : C:\Database\NIST20.L  
TIC Integration Parameters: LSCINT.P

TIC Top Hit name	RT	EstConc	Units	Response	--Internal Standard--			
					#	RT	Resp	Conc
Ethanol, 2-(2-b...	10.231	2.3	ng/u1	429523	2	10.460	3765970	20.0
2-(2-Butoxyetho...	12.725	3.5	ng/u1	790510	3	14.313	4473160	20.0
Diphenyl ether	13.360	17.7	ng/u1	3949360	3	14.313	4473160	20.0
Phenol, 4-(1-me...	17.407	33.6	ng/u1	7688950	4	17.036	4575800	20.0