

Data Path : Z:\svoasrv\HPCHEM1\BNA_M\Data\BM092622\
 Data File : BM036770.D
 Acq On : 27 Sep 2022 06:52
 Operator : CG/JU
 Sample : PB147886TB 10X
 Misc :
 ALS Vial : 33 Sample Multiplier: 1

Instrument :
 BNA_M
 ClientSampleId :
 SLEB886

Integration Parameters: LSCINT.P

Integrator: RTE
 Smoothing : OFF Filtering: 5
 Sampling : 1 Min Area: 0.1 % of largest Peak
 Start Thrs: 0.2 Max Peaks: 100
 Stop Thrs : 0 Peak Location: TOP

If leading or trailing edge < 100 prefer < Baseline drop else tangent >
 Peak separation: 5

Method : Z:\svoasrv\HPCHEM1\BNA_M\Methods\SFAM-EPA-BM091522.M
 Title : SVOA CALIBRATION

Signal : TIC: BM036770.D\data.ms

peak #	R.T. min	first scan	max scan	last scan	PK TY	peak height	corr. area	corr. % max.	% of total
1	3.381	46	50	58	rVB	135568	176048	1.80%	0.160%
2	3.810	119	123	143	rBV	1513351	2430045	24.83%	2.215%
3	4.140	176	179	184	rVB	28120	35846	0.37%	0.033%
4	7.157	685	692	704	rVB	2103844	3350590	34.24%	3.055%
5	7.328	714	721	733	rVB	1827832	2828895	28.91%	2.579%
6	7.528	748	755	763	rBV	2153222	3422026	34.97%	3.120%
7	7.998	827	835	845	rVB	1602551	2516932	25.72%	2.295%
8	8.704	948	955	972	rBV	2777964	4305235	43.99%	3.925%
9	9.163	1025	1033	1043	rBV	2099540	3383649	34.58%	3.085%
10	9.886	1148	1156	1167	rBV	1603320	2600945	26.58%	2.371%
11	10.422	1238	1247	1265	rBV	2555949	4247879	43.41%	3.873%
12	10.804	1305	1312	1324	rVB	2205840	3759717	38.42%	3.428%
13	10.945	1327	1336	1355	rBV	2464795	4215757	43.08%	3.843%
14	12.069	1525	1527	1534	rVB7	8299	12546	0.13%	0.011%
15	12.386	1575	1581	1588	rBV2	45041	78555	0.80%	0.072%
16	13.527	1770	1775	1780	rBV2	35390	55811	0.57%	0.051%
17	14.039	1853	1862	1871	rBV	4178922	5938572	60.68%	5.414%
18	14.316	1901	1909	1925	rBV	5084814	7335123	74.96%	6.687%
19	14.621	1954	1961	1969	rBV	3300379	4879028	49.86%	4.448%
20	14.810	1987	1993	2008	rBV	1769199	2682736	27.41%	2.446%
21	15.033	2028	2031	2038	rVB9	7554	14456	0.15%	0.013%
22	15.610	2118	2129	2141	rBV	6639153	9175204	93.76%	8.365%
23	15.721	2142	2148	2163	rVV	1416430	1996051	20.40%	1.820%
24	15.845	2165	2169	2174	rVB	52727	80798	0.83%	0.074%
25	16.174	2222	2225	2234	rBV	5175	10051	0.10%	0.009%
26	16.392	2259	2262	2269	rVB4	18455	27729	0.28%	0.025%
27	16.839	2334	2338	2344	rBV3	11384	17008	0.17%	0.016%
28	17.039	2368	2372	2375	rBV6	10987	14203	0.15%	0.013%
29	17.145	2387	2390	2394	rVB4	8671	10474	0.11%	0.010%
30	17.362	2420	2427	2436	rBV	3718992	5362242	54.80%	4.889%
31	17.457	2437	2443	2460	rVV	6682452	9372587	95.78%	8.545%
32	18.856	2677	2681	2685	rBV4	14151	21325	0.22%	0.019%
33	19.309	2754	2758	2763	rBV2	68416	86263	0.88%	0.079%
34	19.374	2766	2769	2776	rVV	62091	89993	0.92%	0.082%
35	19.745	2826	2832	2842	rBV	7403906	9785926	100.00%	8.922%
36	20.733	2997	3000	3004	rBV2	120562	140845	1.44%	0.128%

Data Path : Z:\svoasrv\HPCHEM1\BNA_M\Data\BM092622\
Data File : BM036770.D
Acq On : 27 Sep 2022 06:52
Operator : CG/JU
Sample : PB147886TB 10X
Misc :
ALS Vial : 33 Sample Multiplier: 1

Instrument :
BNA_M
ClientSampleId :
SLEB886

Integration Parameters: LSCINT.P
Integrator: RTE
Smoothing : OFF Filtering: 5
Sampling : 1 Min Area: 0.1 % of largest Peak
Start Thrs: 0.2 Max Peaks: 100
Stop Thrs : 0 Peak Location: TOP

If leading or trailing edge < 100 prefer < Baseline drop else tangent >
Peak separation: 5

Method : Z:\svoasrv\HPCHEM1\BNA_M\Methods\SFAM-EPA-BM091522.M
Title : SVOA CALIBRATION

37	21.527	3130	3135	3144	rBV	3517409	4509499	46.08%	4.111%
38	23.803	3515	3522	3538	rVB2	3412836	6957843	71.10%	6.343%
39	23.956	3542	3548	3561	rVB2	1836186	3760017	38.42%	3.428%

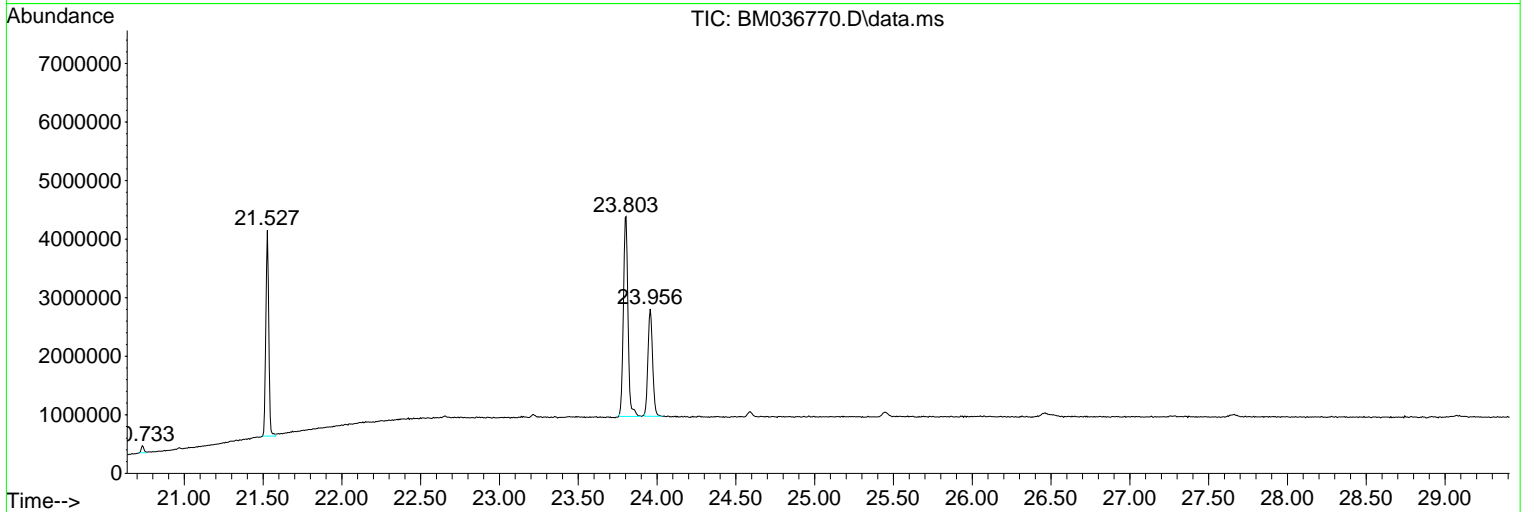
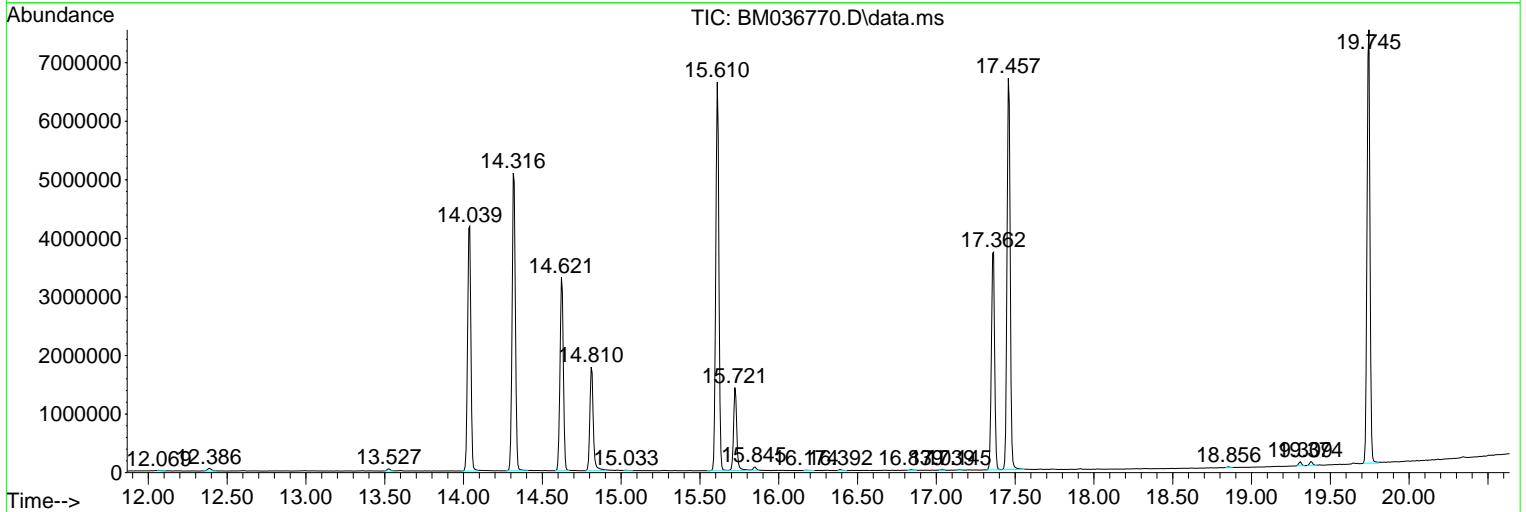
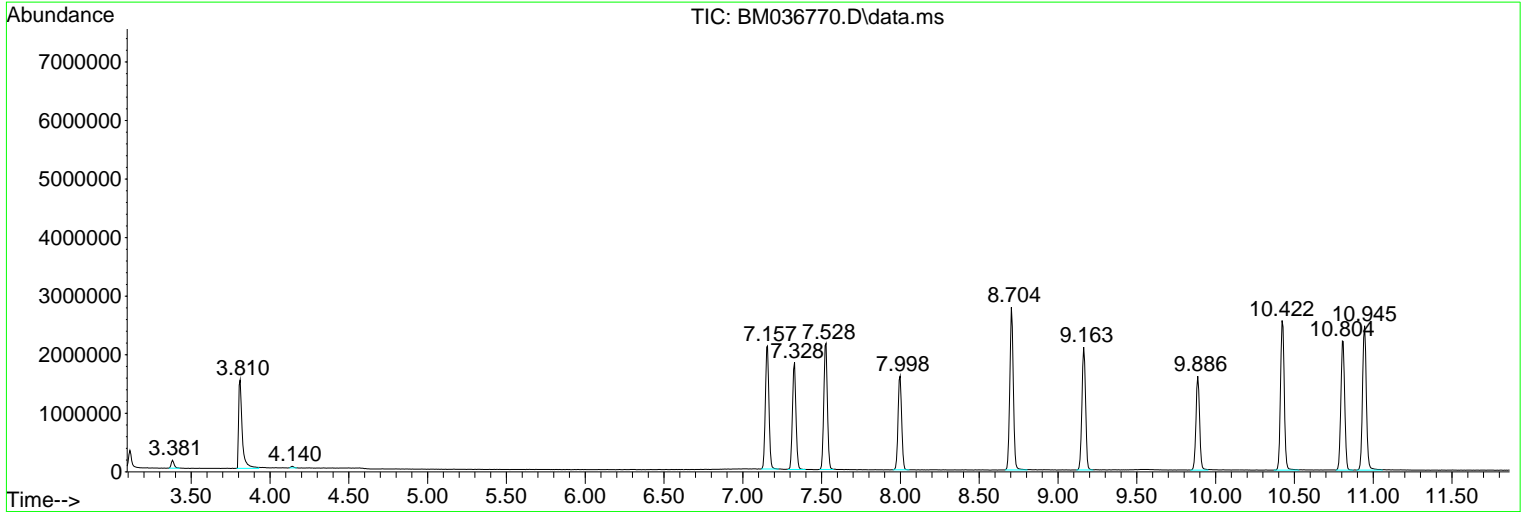
Sum of corrected areas: 109688449

Data Path : Z:\svoasrv\HPCHEM1\BNA_M\Data\BM092622\
 Data File : BM036770.D
 Acq On : 27 Sep 2022 06:52
 Operator : CG/JU
 Sample : PB147886TB 10X
 Misc :
 ALS Vial : 33 Sample Multiplier: 1

Instrument :
 BNA_M
ClientSampleId :
 SLEB886

Quant Method : Z:\svoasrv\HPCHEM1\BNA_M\Methods\SFAM-EPA-BM091522.M
 Quant Title : SVOA CALIBRATION

TIC Library : C:\Database\NIST20.L
 TIC Integration Parameters: LSCINT.P



Library Search Compound Report

Data Path : Z:\svoasrv\HPCHEM1\BNA_M\Data\BM092622\
Data File : BM036770.D
Acq On : 27 Sep 2022 06:52
Operator : CG/JU
Sample : PB147886TB 10X
Misc :
ALS Vial : 33 Sample Multiplier: 1

Instrument :
BNA_M
ClientSampleId :
SLEB886

Quant Method : Z:\svoasrv\HPCHEM1\BNA_M\Methods\SFAM-EPA-BM091522.M
Quant Title : SVOA CALIBRATION

TIC Library : C:\Database\NIST20.L
TIC Integration Parameters: LSCINT.P

No Library Search Compounds Detected

Data Path : Z:\svoasrv\HPCHEM1\BNA_M\Data\BM092622\
Data File : BM036770.D
Acq On : 27 Sep 2022 06:52
Operator : CG/JU
Sample : PB147886TB 10X
Misc :
ALS Vial : 33 Sample Multiplier: 1

Instrument :
BNA_M
ClientSampleId :
SLEB886

Quant Method : Z:\svoasrv\HPCHEM1\BNA_M\Methods\SFAM-EPA-BM091522.M
Quant Title : SVOA CALIBRATION

TIC Library : C:\Database\NIST20.L
TIC Integration Parameters: LSCINT.P

TIC Top Hit name	RT	EstConc	Units	Response	#	RT	Resp	Conc
------------------	----	---------	-------	----------	---	----	------	------

|--Internal Standard--|