

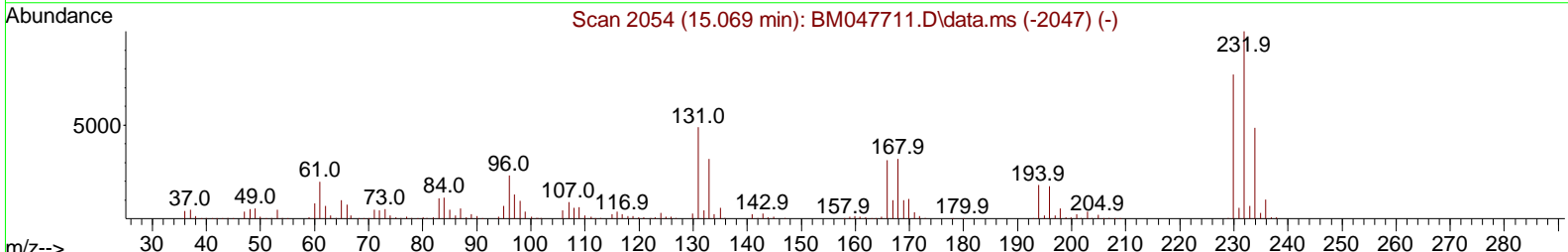
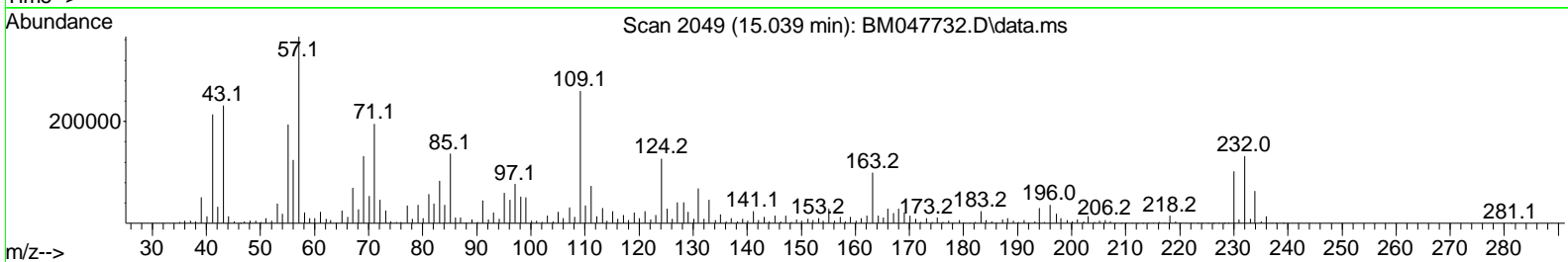
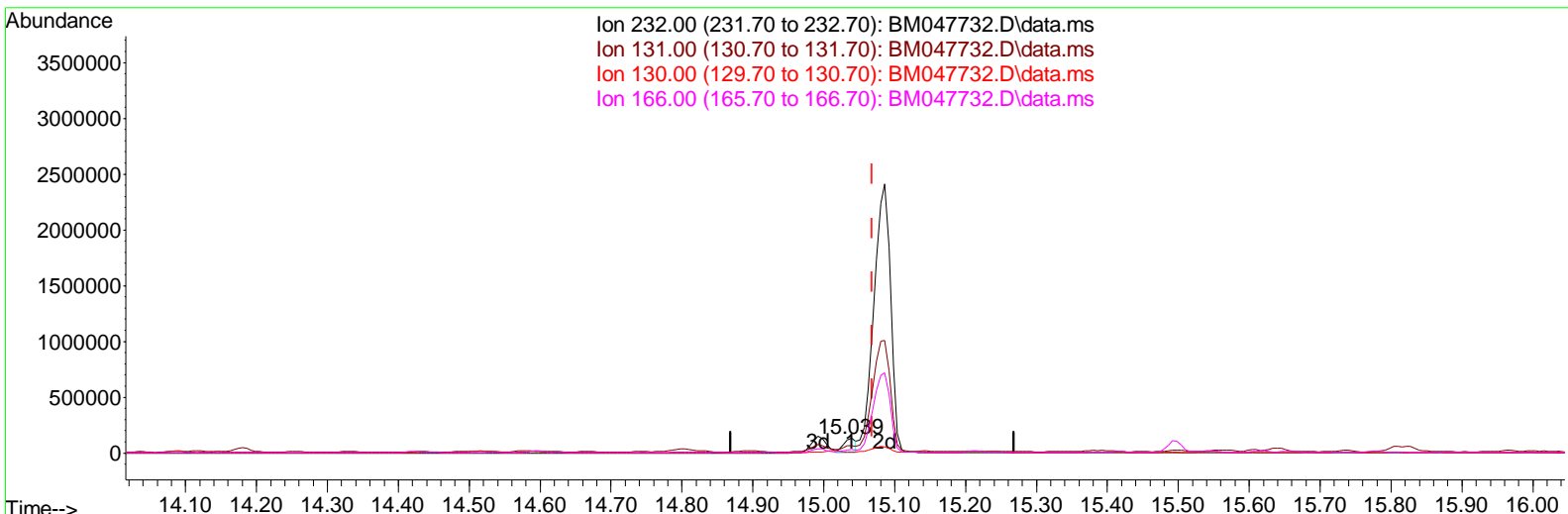
Data Path : Z:\svoasrv\HPCHEM1\BNA_M\Data\BM093024\
 Data File : BM047732.D
 Acq On : 01 Oct 2024 01:09
 Operator : RC/JU
 Sample : P4018-10
 Misc :
 ALS Vial : 22 Sample Multiplier: 1

Instrument :
 BNA_M
ClientSampleId :
 DDCB6

Manual Integrations APPROVED

Reviewed By :Yogesh Patel 10/01/2024
 Supervised By :mohammad ahmed 10/01/2024

Quant Time: Oct 01 01:45:12 2024
 Quant Method : Z:\svoasrv\HPCHEM1\BNA_M\Methods\SFAM-EPA-BM092724.MA.M
 Quant Title : SVOA CALIBRATION
 QLast Update : Sat Sep 28 02:30:36 2024
 Response via : Initial Calibration



TIC: BM047732.D\data.ms

(58) 2,3,4,6-Tetrachlorophenol

15.039min (-0.029) 13.17 ng/ul

response 162448

Ion	Exp%	Act%
232.00	100.00	100.00
131.00	50.30	51.44
130.00	3.30	6.41#
166.00	31.60	21.99#

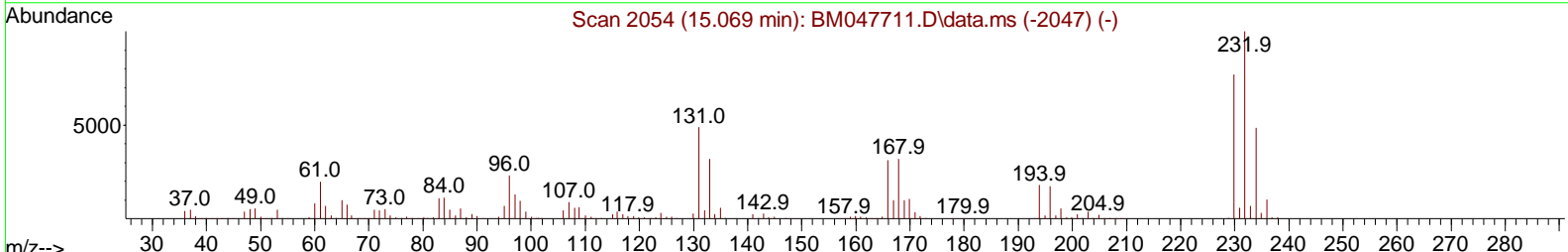
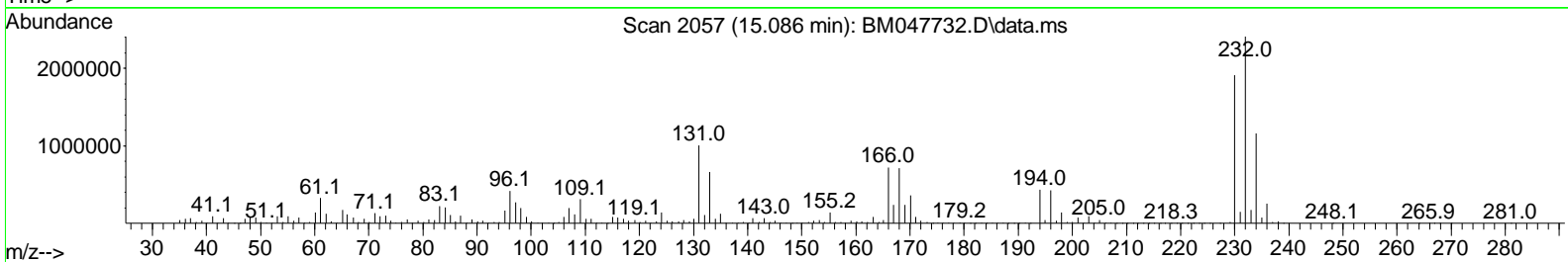
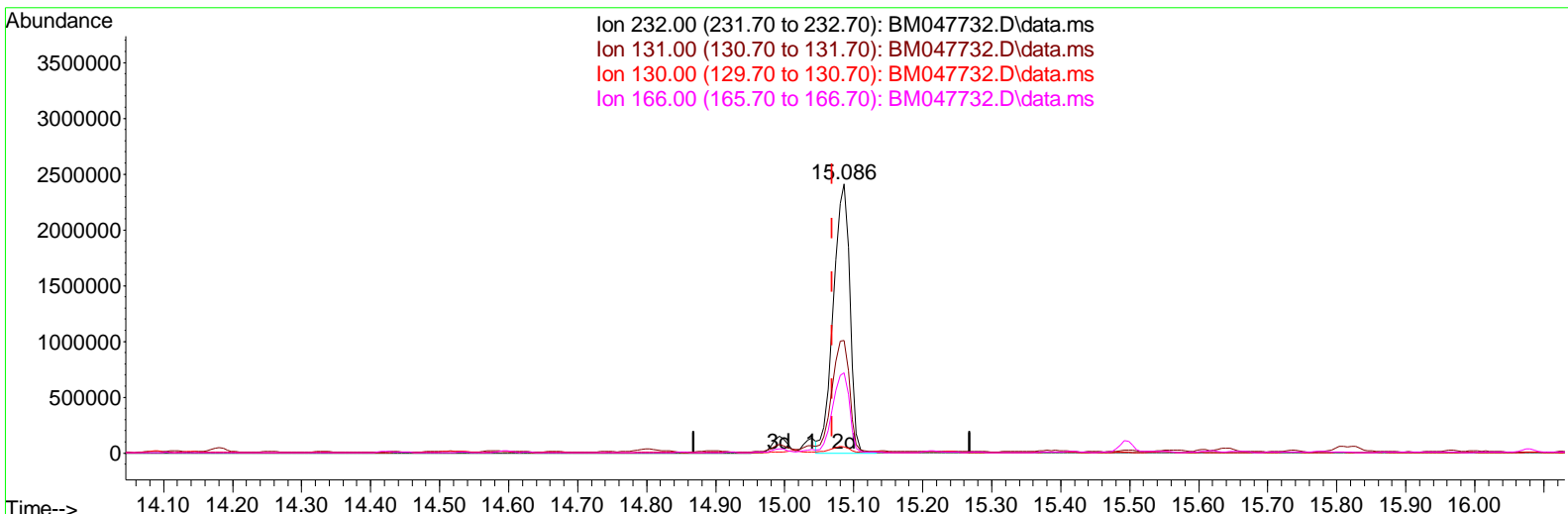
Data Path : Z:\svoasrv\HPCHEM1\BNA_M\Data\BM093024\
 Data File : BM047732.D
 Acq On : 01 Oct 2024 01:09
 Operator : RC/JU
 Sample : P4018-10
 Misc :
 ALS Vial : 22 Sample Multiplier: 1

Instrument :
 BNA_M
 ClientSampleId :
 DDCB6

Manual Integrations APPROVED

Reviewed By :Yogesh Patel 10/01/2024
 Supervised By :mohammad ahmed 10/01/2024

Quant Time: Oct 01 01:45:12 2024
 Quant Method : Z:\svoasrv\HPCHEM1\BNA_M\Methods\SFAM-EPA-BM092724.MA.M
 Quant Title : SVOA CALIBRATION
 QLast Update : Sat Sep 28 02:30:36 2024
 Response via : Initial Calibration



TIC: BM047732.D\data.ms

(58) 2,3,4,6-Tetrachlorophenol

15.086min (+ 0.018) 323.53 ng/ul m

response 3989283

Ion	Exp%	Act%
232.00	100.00	100.00
131.00	50.30	41.85
130.00	3.30	2.38#
166.00	31.60	29.95

Data Path : Z:\svoasrv\HPCHEM1\BNA_M\Data\BMO93024\
 Data File : BMO47732.D
 Acq On : 01 Oct 2024 01:09
 Operator : RC/JU
 Sample : P4018-10
 Misc :
 ALS Vial : 22 Sample Multiplier: 1

Instrument :
 BNA_M
ClientSampleId :
 DDCB6

Manual Integrations APPROVED

Reviewed By :Yogesh Patel 10/01/2024
 Supervised By :mohammad ahmed 10/01/2024

Quant Time: Oct 01 01:46:36 2024
 Quant Method : Z:\svoasrv\HPCHEM1\BNA_M\Methods\SFAM-EPA-BMO92724.MA.M
 Quant Title : SVOA CALIBRATION
 QLast Update : Sat Sep 28 02:30:36 2024
 Response via : Initial Calibration

Compound	R.T.	QI on	Response	Conc	Units	Dev(Min)
Internal Standards						
1) 1,4-Dichlorobenzene-d4	7.816	152	299618	20.000	ng/ul	0.00
20) Naphthalene-d8	10.610	136	1042900	20.000	ng/ul #	0.00
38) Acenaphthene-d10	14.445	164	759489	20.000	ng/ul	0.00
64) Phenanthrene-d10	17.198	188	1412973	20.000	ng/ul	0.01
79) Chrysene-d12	21.403	240	1364792	20.000	ng/ul	0.00
88) Perylene-d12	24.415	264	1646010	20.000	ng/ul	0.00
System Monitoring Compounds						
3) 1,4-Dioxane-d8	3.258	96	26241	2.830	ng/uL	0.00
4) Pyridine-d5	3.681	84	294223	10.838	ng/ul	0.00
7) Phenol-d5	6.993	99	483873	17.079	ng/ul	0.02
9) Bis-(2-Chloroethyl)eth...	7.146	67	328436	16.337	ng/ul	0.00
11) 2-Chlorophenol-d4	7.351	132	392507	19.042	ng/ul	0.00
15) 4-Methylphenol-d8	8.528	113	347298	16.487	ng/ul	0.01
21) Nitrobenzene-d5	8.969	128	200066	24.094	ng/ul	0.00
24) 2-Nitrophenol-d4	9.687	143	199509	25.072	ng/ul	0.00
28) 2,4-Dichlorophenol-d3	10.239	165	369318	23.233	ng/ul	0.01
31) 4-Chloroaniline-d4	10.728	131	377463	15.360	ng/ul	-0.01
46) Dimethylphthalate-d6	13.857	166	1018521	18.497	ng/ul	0.00
49) Acenaphthylene-d8	14.139	160	1272416	19.490	ng/ul	0.00
54) 4-Nitrophenol-d4	14.639	143	210561	19.206	ng/ul	0.00
60) Fluorene-d10	15.439	176	927259	19.442	ng/ul	0.00
65) 4,6-Dinitro-2-methylph...	15.551	200	128543	15.546	ng/ul	0.00
73) Anthracene-d10	17.292	188	1334564	19.209	ng/ul	0.00
81) Pyrene-d10	19.568	212	1601103	20.670	ng/ul	0.00
92) Benzo(a)pyrene-d12	24.203	264	1724889	20.197	ng/ul	0.00
Target Compounds						
23) Isophorone	9.540	82	631344	14.962	ng/ul #	77
29) 2,4-Dichlorophenol	10.269	162	47083	2.868	ng/ul #	84
30) Naphthalene	10.657	128	1273087	21.222	ng/ul	98
36) 2-Methylnaphthalene	12.269	142	1860312	48.807	ng/ul	97
37) 1-Methylnaphthalene	12.492	142	1132862	29.213	ng/ul	100
41) 2,4,6-Tri chlorophenol	12.886	196	34867	2.437	ng/ul	96
42) 2,4,5-Tri chlorophenol	12.957	196	23227	1.485	ng/ul	98
43) 1,1'-Bi phenyl	13.280	154	175519	2.886	ng/ul #	81
52) Acenaphthene	14.510	153	80460	1.546	ng/ul	90
58) 2,3,4,6-Tetrachlorophenol	15.086	232	3989283m	323.534	ng/ul	
61) Fluorene	15.492	166	155638	2.663	ng/ul #	89
71) Pentachlorophenol	16.910	266	21880666	2030.179	ng/ul	99
72) Phenanthrene	17.239	178	658533	7.947	ng/ul #	96

(#) = qualifier out of range (m) = manual integration (+) = signals summed

Data Path : Z:\svoasrv\HPCHEM1\BNA_M\Data\BM093024\
 Data File : BM047732.D
 Acq On : 01 Oct 2024 01:09
 Operator : RC/JU
 Sample : P4018-10
 Misc :
 ALS Vial : 22 Sample Multiplier: 1

Instrument :
 BNA_M
ClientSampleId :
 DDCB6

Manual IntegrationsAPPROVED

Reviewed By :Yogesh Patel 10/01/2024
 Supervised By :mohammad ahmed 10/01/2024

Quant Time: Oct 01 01:46:36 2024
 Quant Method : Z:\svoasrv\HPCHEM1\BNA_M\Methods\SFAM-EPA-BM092724.MA.M
 Quant Title : SVOA CALIBRATION
 QLast Update : Sat Sep 28 02:30:36 2024
 Response via : Initial Calibration

