

Data Path : Z:\svoasrv\HPCHEM1\BNA_M\Data\BM100124\
 Data File : BM047743.D
 Acq On : 01 Oct 2024 15:03
 Operator : RC/JU
 Sample : P4018-06
 Misc :
 ALS Vial : 7 Sample Multiplier: 1

Instrument :
 BNA_M
 ClientSampleId :
 DDCB2

Integration Parameters: LSCINT.P

Integrator: RTE
 Smoothing : OFF Filtering: 5
 Sampling : 1 Min Area: 0.1 % of largest Peak
 Start Thrs: 0.2 Max Peaks: 100
 Stop Thrs : 0 Peak Location: TOP

If leading or trailing edge < 100 prefer < Baseline drop else tangent >
 Peak separation: 5

Method : Z:\svoasrv\HPCHEM1\BNA_M\Methods\SFAM-EPA-BM092724.MA.M
 Title : SVOA CALIBRATION

Signal : TIC: BM047743.D\data.ms

peak #	R.T. min	first scan	max scan	last scan	PK TY	peak height	corr. area	corr. % max.	% of total
1	3.675	113	117	128	rBV	726779	1080451	1.33%	0.728%
2	6.975	670	678	685	rBV	777568	1249959	1.54%	0.842%
3	7.140	696	706	714	rBV	609390	953061	1.17%	0.642%
4	7.340	732	740	752	rVV	720884	1180502	1.45%	0.796%
5	7.446	752	758	766	rVB2	195705	320014	0.39%	0.216%
6	7.810	812	820	827	rVV	1167381	1861449	2.29%	1.255%
7	8.351	901	912	918	rBV4	41841	101317	0.12%	0.068%
8	8.510	926	939	948	rBV	906927	1539100	1.89%	1.037%
9	8.963	1010	1016	1022	rVV	687785	1143261	1.41%	0.771%
10	9.045	1023	1030	1039	rVB	220920	350481	0.43%	0.236%
11	9.528	1108	1112	1119	rVB	59445	93521	0.12%	0.063%
12	9.687	1130	1139	1145	rBV	561924	930709	1.14%	0.627%
13	10.222	1222	1230	1240	rVB	915900	1481016	1.82%	0.998%
14	10.604	1284	1295	1302	rBV	1671947	2929798	3.60%	1.975%
15	10.734	1310	1317	1331	rVB	933961	1623428	2.00%	1.094%
16	10.987	1354	1360	1368	rBV	58627	99333	0.12%	0.067%
17	11.704	1474	1482	1489	rVB	168212	303114	0.37%	0.204%
18	11.875	1506	1511	1520	rVB	73679	119028	0.15%	0.080%
19	12.034	1531	1538	1541	rBV2	89918	149578	0.18%	0.101%
20	12.069	1541	1544	1549	rVV	68698	96047	0.12%	0.065%
21	12.128	1549	1554	1559	rVV3	48397	88584	0.11%	0.060%
22	12.192	1559	1565	1573	rVV7	28889	96917	0.12%	0.065%
23	12.681	1642	1648	1659	rBV	89803	175181	0.22%	0.118%
24	13.280	1743	1750	1757	rVB	113071	170793	0.21%	0.115%
25	13.763	1827	1832	1836	rBV2	53892	102397	0.13%	0.069%
26	13.810	1836	1840	1842	rVV4	53165	91443	0.11%	0.062%
27	13.851	1842	1847	1854	rVV	1736467	2345436	2.88%	1.581%
28	14.080	1881	1886	1889	rBV3	67587	90387	0.11%	0.061%
29	14.133	1889	1895	1903	rVB	1891855	2837514	3.49%	1.912%
30	14.351	1927	1932	1937	rBV	1739577	2234415	2.75%	1.506%
31	14.445	1941	1948	1954	rVV	2354761	3474016	4.27%	2.341%
32	14.586	1965	1972	1975	rVV	291039	406296	0.50%	0.274%
33	14.633	1975	1980	1994	rVB	593679	1054508	1.30%	0.711%
34	14.980	2033	2039	2041	rBV4	64844	104290	0.13%	0.070%
35	15.063	2048	2053	2062	rVB	1292731	1894762	2.33%	1.277%
36	15.204	2072	2077	2085	rBV	223377	320886	0.39%	0.216%

Data Path : Z:\svoasrv\HPCHEM1\BNA_M\Data\BM100124\
 Data File : BM047743.D
 Acq On : 01 Oct 2024 15:03
 Operator : RC/JU
 Sample : P4018-06
 Misc :
 ALS Vial : 7 Sample Multiplier: 1

Instrument :
 BNA_M
 ClientSampleId :
 DDCB2

Integration Parameters: LSCINT.P

Integrator: RTE
 Smoothing : OFF Filtering: 5
 Sampling : 1 Min Area: 0.1 % of largest Peak
 Start Thrs: 0.2 Max Peaks: 100
 Stop Thrs : 0 Peak Location: TOP

If leading or trailing edge < 100 prefer < Baseline drop else tangent >
 Peak separation: 5

Method : Z:\svoasrv\HPCHEM1\BNA_M\Methods\SFAM-EPA-BM092724.MA.M
 Title : SVOA CALIBRATION

37	15.298	2085	2093	2098	rVB2	190903	376470	0.46%	0.254%
38	15.433	2108	2116	2123	rBV	2584209	3547941	4.36%	2.391%
39	15.545	2128	2135	2144	rBV	690846	1058009	1.30%	0.713%
40	15.704	2154	2162	2167	rVB2	69095	126312	0.16%	0.085%
41	15.798	2172	2178	2184	rVB	432953	614010	0.76%	0.414%
42	16.163	2235	2240	2242	rBV	173733	233888	0.29%	0.158%
43	16.357	2267	2273	2278	rBV5	50703	118427	0.15%	0.080%
44	16.863	2347	2359	2364	rBV	33429743	81301136	100.00%	54.796%
45	16.951	2370	2374	2379	rVB2	214050	294559	0.36%	0.199%
46	17.004	2379	2383	2394	rVB2	103178	205637	0.25%	0.139%
47	17.186	2408	2414	2420	rBV	2887133	3907246	4.81%	2.633%
48	17.280	2424	2430	2436	rVV2	2558330	3651082	4.49%	2.461%
49	17.474	2458	2463	2470	rVB4	72860	138066	0.17%	0.093%
50	17.686	2495	2499	2503	rBV	114329	139283	0.17%	0.094%
51	17.757	2508	2511	2514	rVV	77017	102401	0.13%	0.069%
52	17.798	2514	2518	2525	rVB	227757	296412	0.36%	0.200%
53	18.074	2560	2565	2573	rBV2	365907	545666	0.67%	0.368%
54	18.374	2613	2616	2625	rVB4	82698	131190	0.16%	0.088%
55	19.010	2720	2724	2730	rVB2	61985	84518	0.10%	0.057%
56	19.351	2778	2782	2787	rBV	71385	96983	0.12%	0.065%
57	19.562	2812	2818	2832	rBV	3181802	4426130	5.44%	2.983%
58	21.080	3072	3076	3085	rBV2	285306	475493	0.58%	0.320%
59	21.403	3125	3131	3139	rBV	2848792	4236704	5.21%	2.855%
60	24.203	3598	3607	3619	rVB	1787467	4326912	5.32%	2.916%
61	24.409	3633	3642	3658	rVB	1861581	4843787	5.96%	3.265%

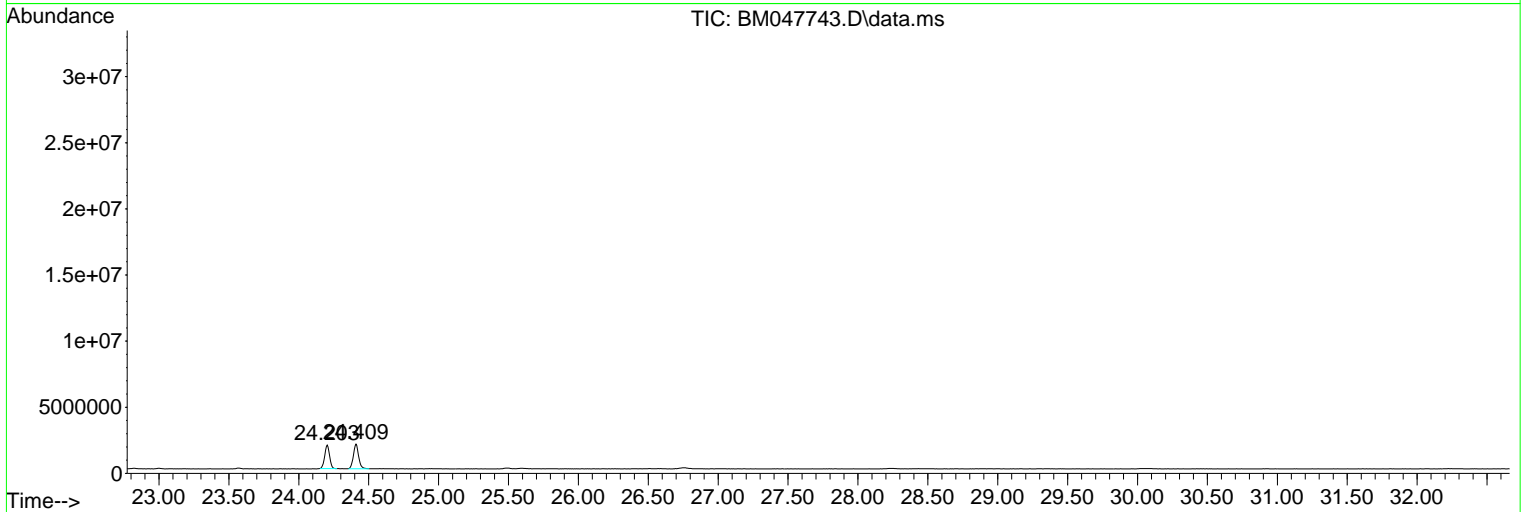
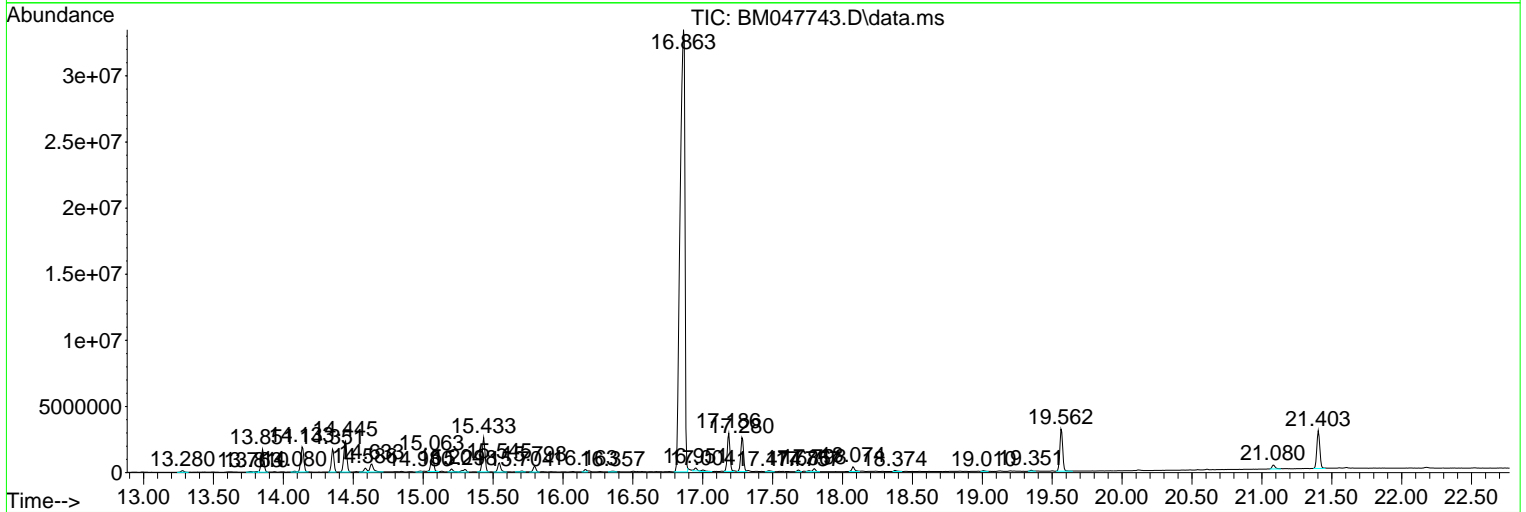
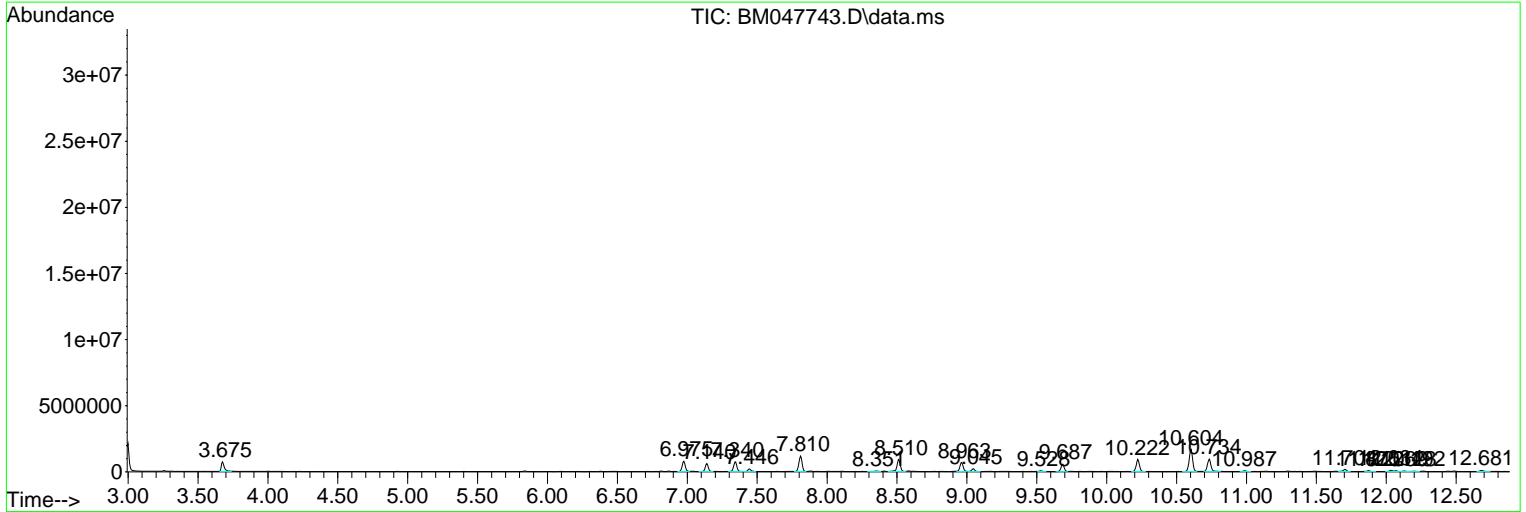
Sum of corrected areas: 148371254

Data Path : Z:\svoasrv\HPCHEM1\BNA_M\Data\BM100124\
 Data File : BM047743.D
 Acq On : 01 Oct 2024 15:03
 Operator : RC/JU
 Sample : P4018-06
 Misc :
 ALS Vial : 7 Sample Multiplier: 1

Instrument :
 BNA_M
ClientSampleId :
 DDCB2

Quant Method : Z:\svoasrv\HPCHEM1\BNA_M\Methods\SFAM-EPA-BM092724.MA.M
 Quant Title : SVOA CALIBRATION

TIC Library : C:\Database\NIST20.L
 TIC Integration Parameters: LSCINT.P



Data Path : Z:\svoasrv\HPCHEM1\BNA_M\Data\BM100124\
 Data File : BM047743.D
 Acq On : 01 Oct 2024 15:03
 Operator : RC/JU
 Sample : P4018-06
 Misc :
 ALS Vial : 7 Sample Multiplier: 1

Instrument :
 BNA_M
 ClientSampleId :
 DDCB2

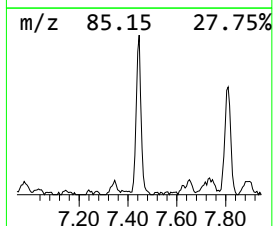
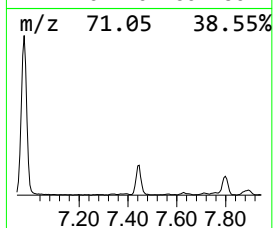
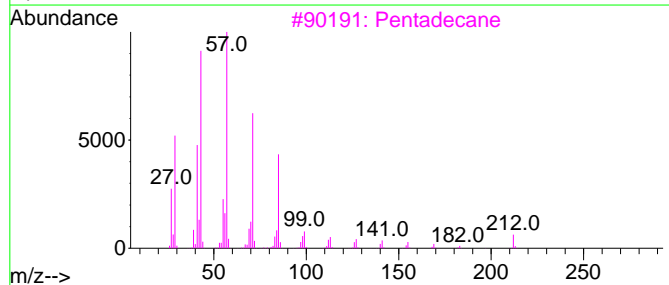
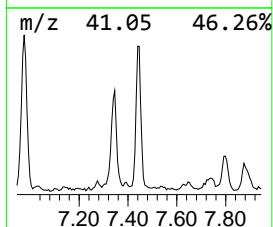
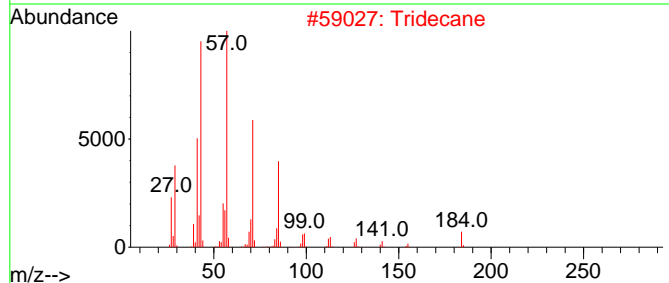
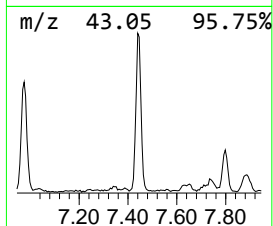
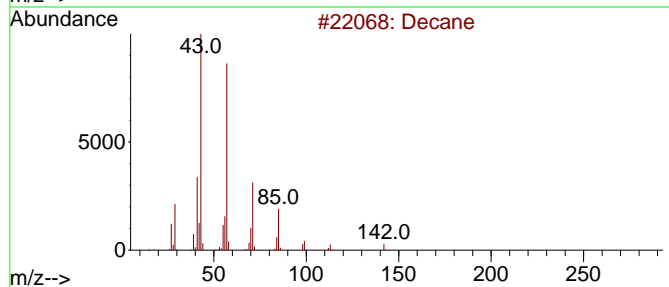
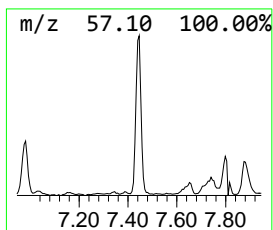
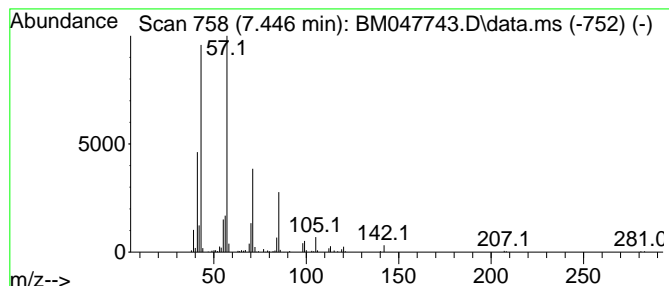
Quant Method : Z:\svoasrv\HPCHEM1\BNA_M\Methods\SFAM-EPA-BM092724.MA.M
 Quant Title : SVOA CALIBRATION

TIC Library : C:\Database\NIST20.L
 TIC Integration Parameters: LSCINT.P

 Peak Number 1 (DEL) Alkane: Straight-Chai... Concentration Rank 4

R.T.	EstConc	Area	Relative to ISTD	R.T.
7.446	3.44 ng/ul	320014	1,4-Dichlorobenzene-d4	7.810

Hit#	of 5	Tentative ID	MW	MolForm	CAS#	Qual
1		Decane	142	C10H22	000124-18-5	93
2		Tridecane	184	C13H28	000629-50-5	90
3		Pentadecane	212	C15H32	000629-62-9	83
4		Undecane	156	C11H24	001120-21-4	83
5		Tridecane	184	C13H28	000629-50-5	78



Data Path : Z:\svoasrv\HPCHEM1\BNA_M\Data\BM100124\
 Data File : BM047743.D
 Acq On : 01 Oct 2024 15:03
 Operator : RC/JU
 Sample : P4018-06
 Misc :
 ALS Vial : 7 Sample Multiplier: 1

Instrument :
 BNA_M
 ClientSampleId :
 DDCB2

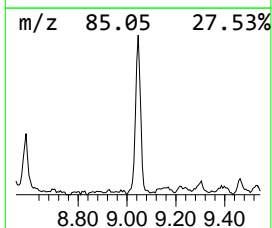
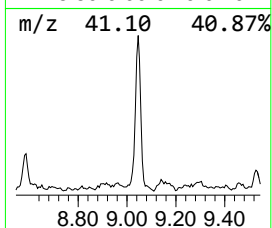
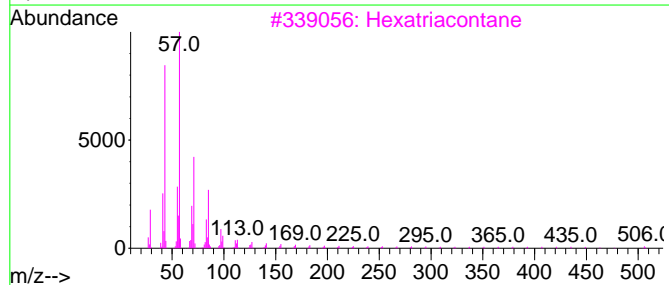
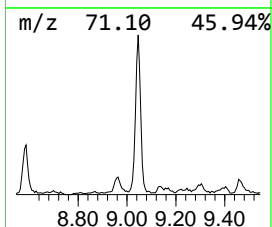
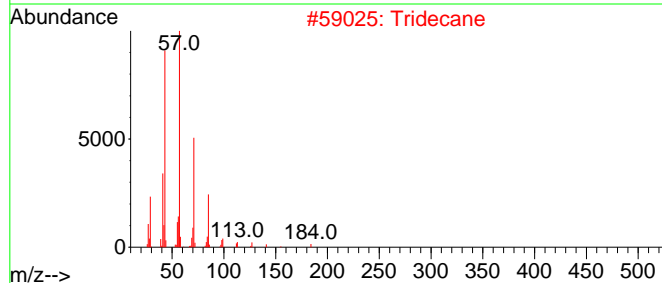
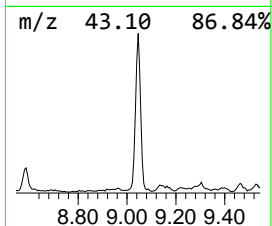
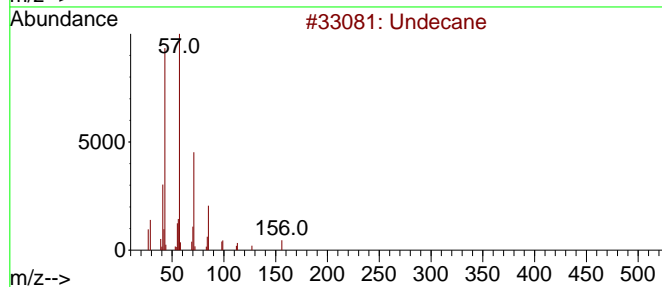
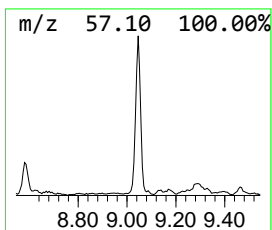
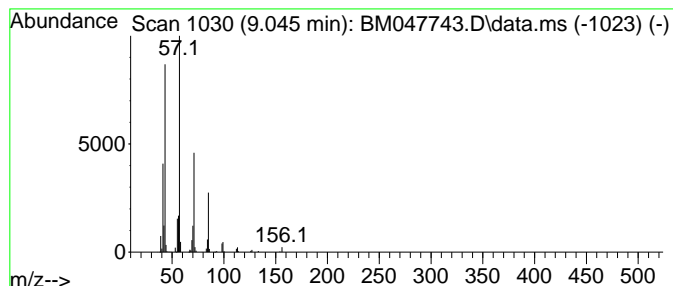
Quant Method : Z:\svoasrv\HPCHEM1\BNA_M\Methods\SFAM-EPA-BM092724.MA.M
 Quant Title : SVOA CALIBRATION

TIC Library : C:\Database\NIST20.L
 TIC Integration Parameters: LSCINT.P

 Peak Number 2 (DEL) Alkane: Straight-Chai... Concentration Rank 2

R.T.	EstConc	Area	Relative to ISTD	R.T.
9.045	3.77 ng/ul	350481	1,4-Dichlorobenzene-d4	7.810

Hit#	of 5	Tentative ID	MW	MolForm	CAS#	Qual
1		Undecane	156	C11H24	001120-21-4	91
2		Tridecane	184	C13H28	000629-50-5	86
3		Hexatriacontane	507	C36H74	000630-06-8	83
4		Decane, 2-methyl-	156	C11H24	006975-98-0	80
5		Tridecane	184	C13H28	000629-50-5	78



Data Path : Z:\svoasrv\HPCHEM1\BNA_M\Data\BM100124\
 Data File : BM047743.D
 Acq On : 01 Oct 2024 15:03
 Operator : RC/JU
 Sample : P4018-06
 Misc :
 ALS Vial : 7 Sample Multiplier: 1

Instrument :
 BNA_M
 ClientSampleId :
 DDCB2

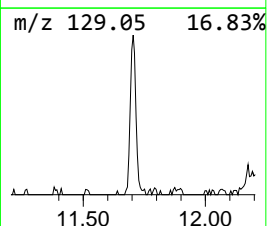
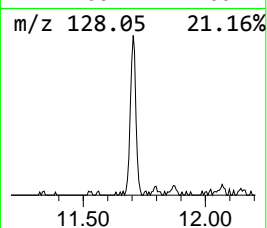
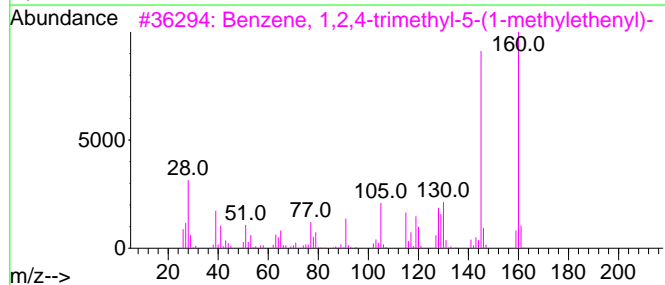
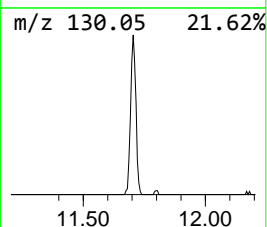
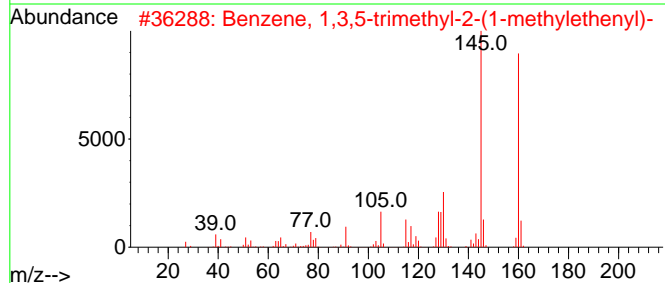
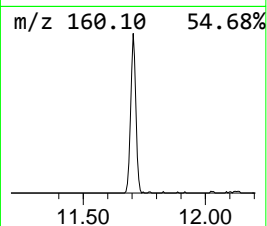
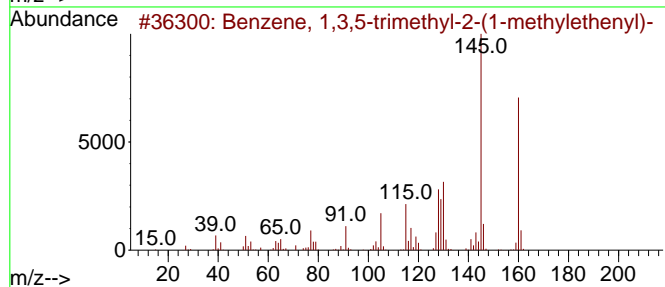
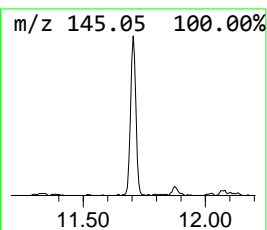
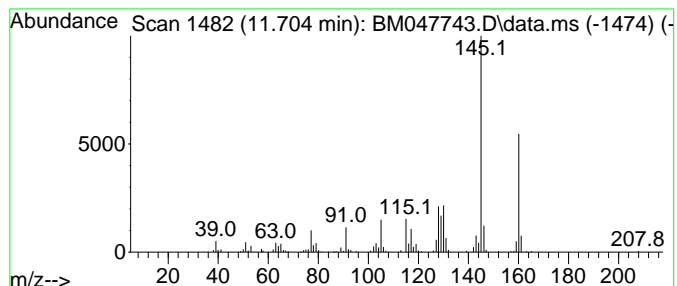
Quant Method : Z:\svoasrv\HPCHEM1\BNA_M\Methods\SFAM-EPA-BM092724.MA.M
 Quant Title : SVOA CALIBRATION

TIC Library : C:\Database\NIST20.L
 TIC Integration Parameters: LSCINT.P

 Peak Number 3 Benzene, 1,3,5-trimethyl-2-... Concentration Rank 8

R.T.	EstConc	Area	Relative to ISTD	R.T.
11.704	2.07 ng/ul	303114	Naphthalene-d8	10.604

Hit#	of	5	Tentative ID	MW	MolForm	CAS#	Qual
1			Benzene, 1,3,5-trimethyl-2-(1-me...	160	C12H16	014679-13-1	97
2			Benzene, 1,3,5-trimethyl-2-(1-me...	160	C12H16	014679-13-1	96
3			Benzene, 1,2,4-trimethyl-5-(1-me...	160	C12H16	054340-84-0	94
4			Benzene, 4-(2-butenyl)-1,2-dimet...	160	C12H16	054340-86-2	94
5			Benzene, 1-(2-butenyl)-2,3-dimet...	160	C12H16	054340-85-1	94



Data Path : Z:\svoasrv\HPCHEM1\BNA_M\Data\BM100124\
 Data File : BM047743.D
 Acq On : 01 Oct 2024 15:03
 Operator : RC/JU
 Sample : P4018-06
 Misc :
 ALS Vial : 7 Sample Multiplier: 1

Instrument :
 BNA_M
 ClientSampleId :
 DDCB2

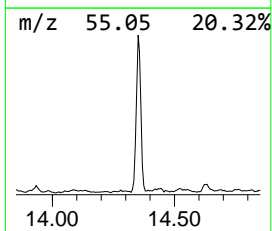
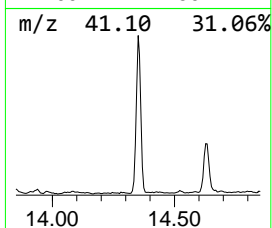
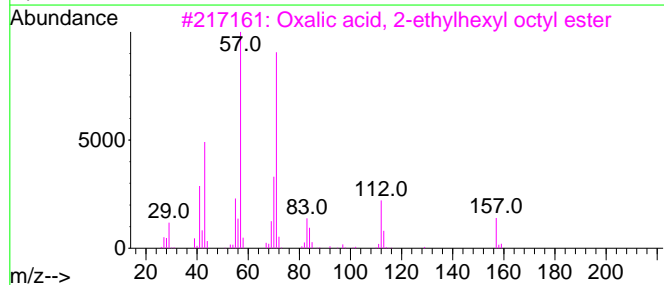
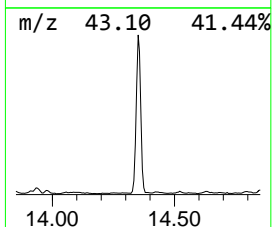
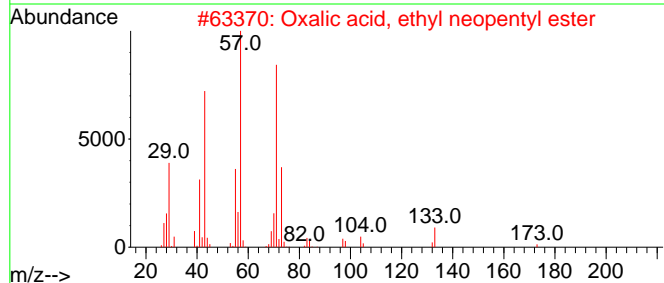
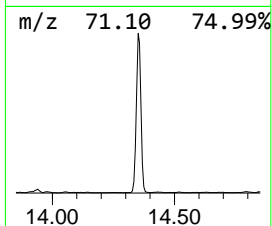
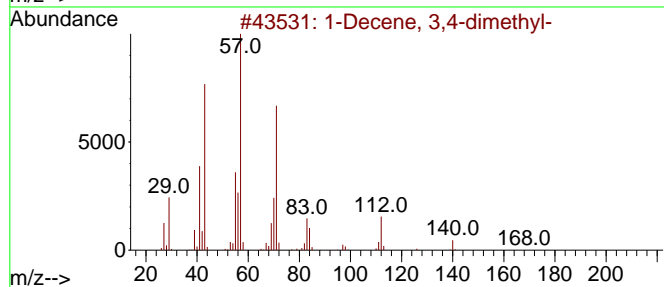
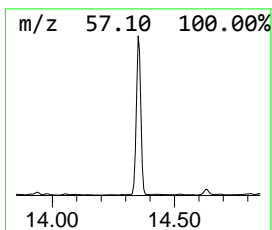
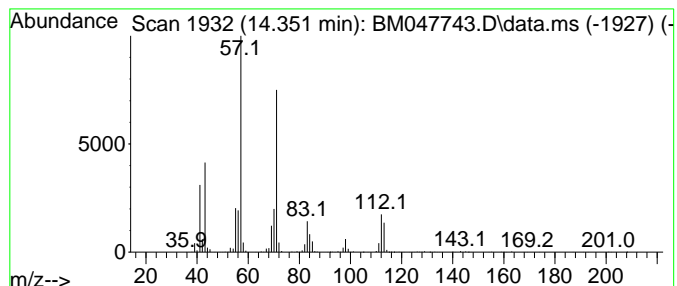
Quant Method : Z:\svoasrv\HPCHEM1\BNA_M\Methods\SFAM-EPA-BM092724.MA.M
 Quant Title : SVOA CALIBRATION

TIC Library : C:\Database\NIST20.L
 TIC Integration Parameters: LSCINT.P

 Peak Number 4 (DEL) Alkane: Straight-Chai... Concentration Rank 1

R.T.	EstConc	Area	Relative to ISTD	R.T.
14.351	12.86 ng/ul	2234420	Acenaphthene-d10	14.445

Hit#	of 5	Tentative ID	MW	MolForm	CAS#	Qual
1		1-Decene, 3,4-dimethyl-	168	C12H24	050871-03-9	72
2		Oxalic acid, ethyl neopentyl ester	188	C9H16O4	1000309-72-4	64
3		Oxalic acid, 2-ethylhexyl octyl ...	314	C18H34O4	1000309-39-1	64
4		Carbonic acid, neopentyl 2-ethyl...	244	C14H28O3	1000357-85-7	64
5		Oxalic acid, 2-ethylhexyl ethyl ...	230	C12H22O4	1000309-38-4	59



Data Path : Z:\svoasrv\HPCHEM1\BNA_M\Data\BM100124\
 Data File : BM047743.D
 Acq On : 01 Oct 2024 15:03
 Operator : RC/JU
 Sample : P4018-06
 Misc :
 ALS Vial : 7 Sample Multiplier: 1

Instrument :
 BNA_M
 ClientSampleId :
 DDCB2

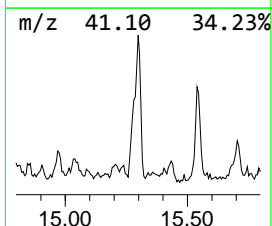
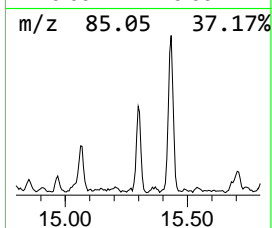
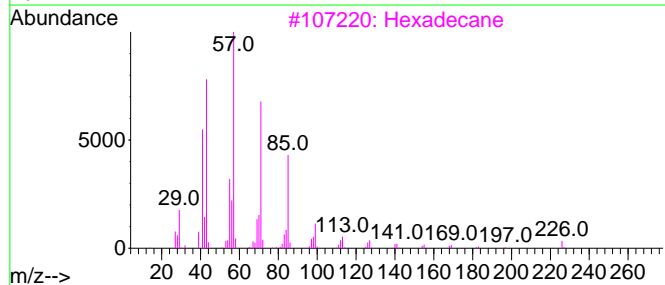
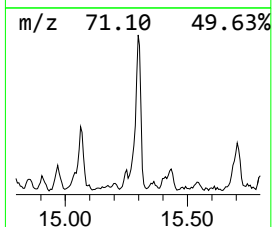
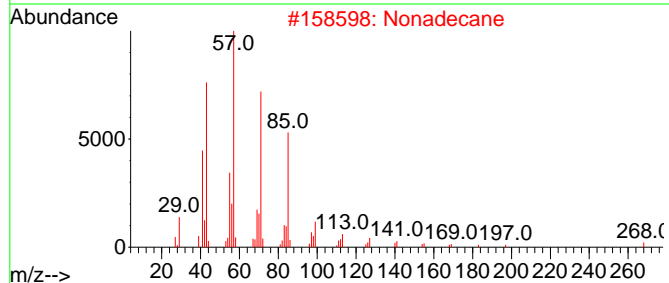
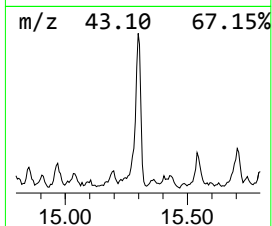
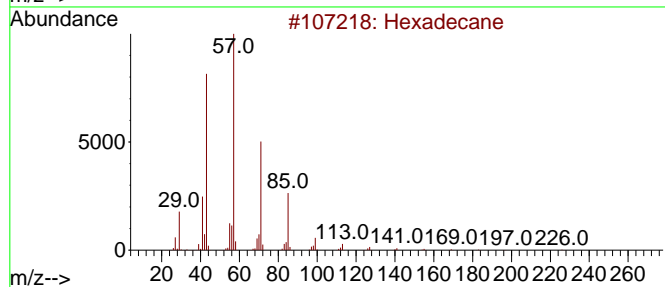
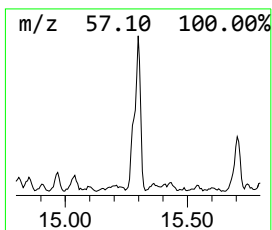
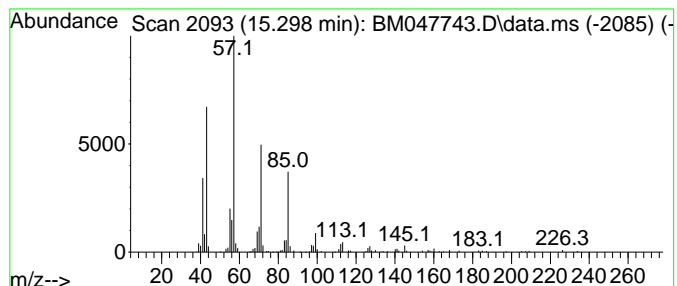
Quant Method : Z:\svoasrv\HPCHEM1\BNA_M\Methods\SFAM-EPA-BM092724.MA.M
 Quant Title : SVOA CALIBRATION

TIC Library : C:\Database\NIST20.L
 TIC Integration Parameters: LSCINT.P

 Peak Number 5 (DEL) Alkane: Straight-Chai... Concentration Rank 7

R.T.	EstConc	Area	Relative to ISTD	R.T.
15.298	2.17 ng/ul	376470	Acenaphthene-d10	14.445

Hit# of 5	Tentative ID	MW	MolForm	CAS#	Qual
1	Hexadecane	226	C16H34	000544-76-3	95
2	Nonadecane	268	C19H40	000629-92-5	87
3	Hexadecane	226	C16H34	000544-76-3	86
4	Heptadecane, 2,6,10,14-tetramethyl-	296	C21H44	018344-37-1	86
5	Tridecane	184	C13H28	000629-50-5	86



Data Path : Z:\svoasrv\HPCHEM1\BNA_M\Data\BM100124\
 Data File : BM047743.D
 Acq On : 01 Oct 2024 15:03
 Operator : RC/JU
 Sample : P4018-06
 Misc :
 ALS Vial : 7 Sample Multiplier: 1

Instrument :
 BNA_M
 ClientSampleId :
 DDCB2

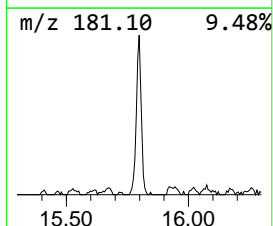
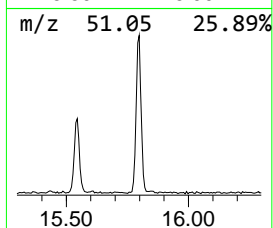
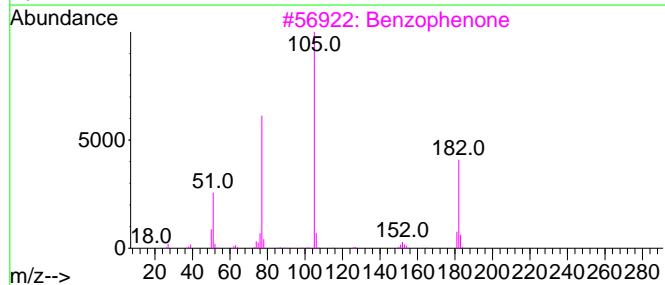
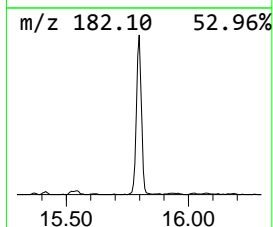
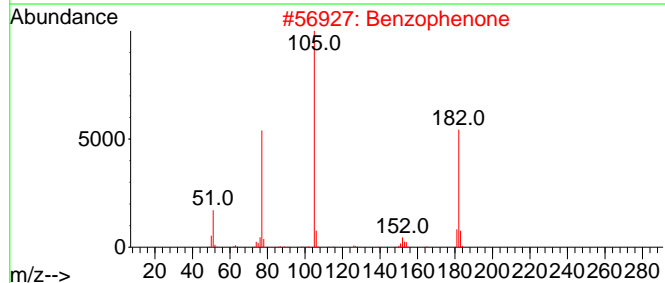
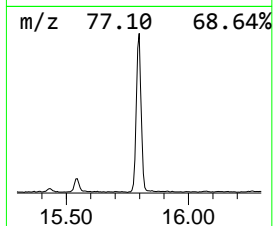
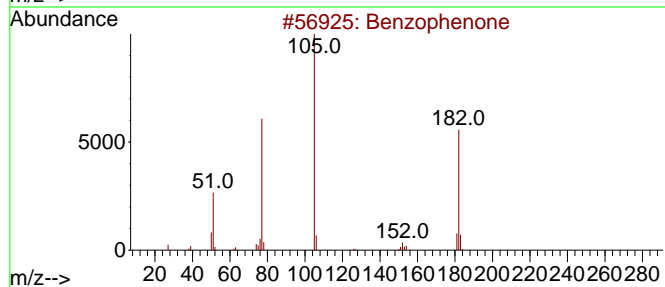
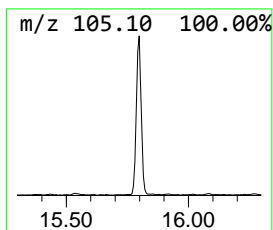
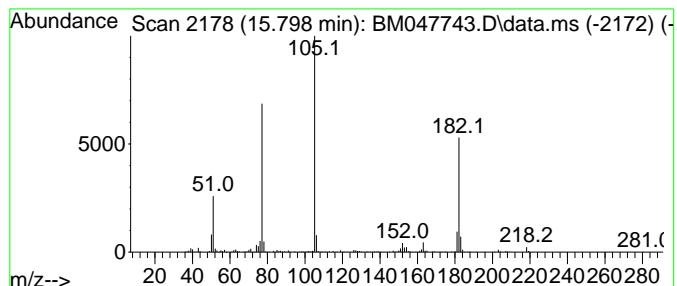
Quant Method : Z:\svoasrv\HPCHEM1\BNA_M\Methods\SFAM-EPA-BM092724.MA.M
 Quant Title : SVOA CALIBRATION

TIC Library : C:\Database\NIST20.L
 TIC Integration Parameters: LSCINT.P

 Peak Number 6 Benzophenone Concentration Rank 3

R.T.	EstConc	Area	Relative to ISTD	R.T.
15.798	3.53 ng/ul	614010	Acenaphthene-d10	14.445

Hit#	of	5	Tentative ID	MW	MolForm	CAS#	Qual
1			Benzophenone	182	C13H10O	000119-61-9	96
2			Benzophenone	182	C13H10O	000119-61-9	95
3			Benzophenone	182	C13H10O	000119-61-9	94
4			Benzophenone	182	C13H10O	000119-61-9	93
5			Benzenecarbothioic acid, S-methy...	152	C8H8OS	005925-68-8	49



Data Path : Z:\svoasrv\HPCHEM1\BNA_M\Data\BM100124\
 Data File : BM047743.D
 Acq On : 01 Oct 2024 15:03
 Operator : RC/JU
 Sample : P4018-06
 Misc :
 ALS Vial : 7 Sample Multiplier: 1

Instrument :
 BNA_M
 ClientSampleId :
 DDCB2

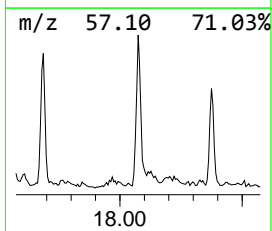
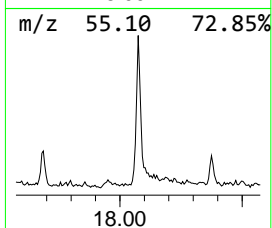
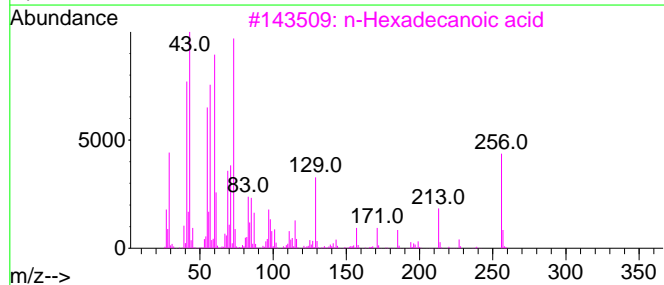
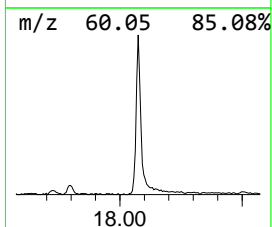
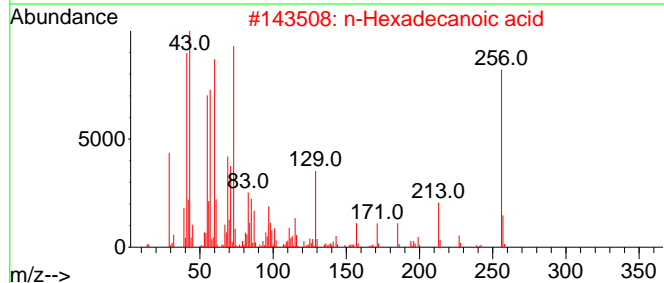
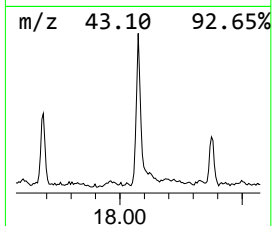
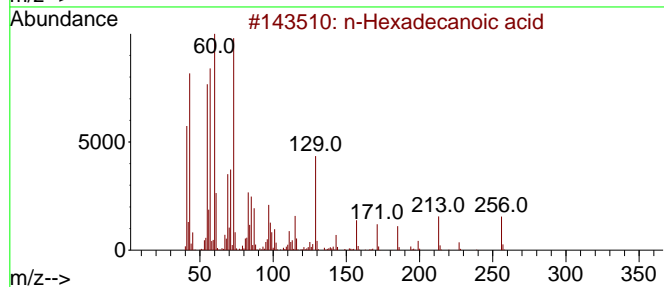
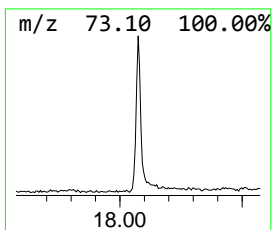
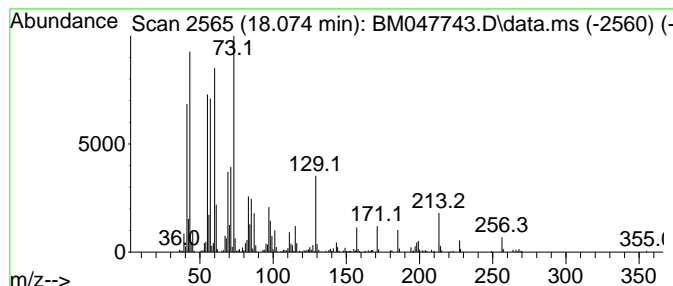
Quant Method : Z:\svoasrv\HPCHEM1\BNA_M\Methods\SFAM-EPA-BM092724.MA.M
 Quant Title : SVOA CALIBRATION

TIC Library : C:\Database\NIST20.L
 TIC Integration Parameters: LSCINT.P

 Peak Number 7 n-Hexadecanoic acid Concentration Rank 5

R.T.	EstConc	Area	Relative to ISTD	R.T.
18.074	2.79 ng/ul	545666	Phenanthrene-d10	17.186

Hit#	of 5	Tentative ID	MW	MolForm	CAS#	Qual
1		n-Hexadecanoic acid	256	C16H32O2	000057-10-3	99
2		n-Hexadecanoic acid	256	C16H32O2	000057-10-3	99
3		n-Hexadecanoic acid	256	C16H32O2	000057-10-3	98
4		n-Hexadecanoic acid	256	C16H32O2	000057-10-3	97
5		Tetradecanoic acid	228	C14H28O2	000544-63-8	93



Data Path : Z:\svoasrv\HPCHEM1\BNA_M\Data\BM100124\
 Data File : BM047743.D
 Acq On : 01 Oct 2024 15:03
 Operator : RC/JU
 Sample : P4018-06
 Misc :
 ALS Vial : 7 Sample Multiplier: 1

Instrument :
 BNA_M
 ClientSampleId :
 DDCB2

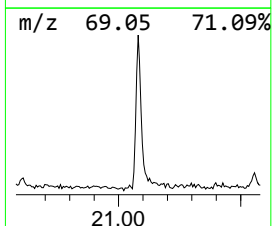
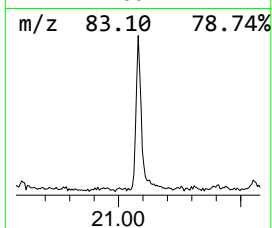
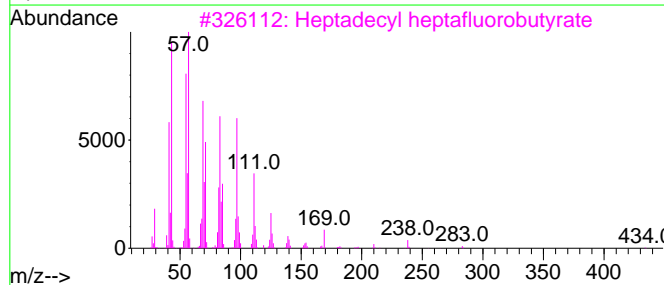
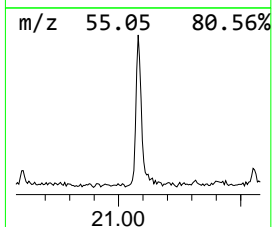
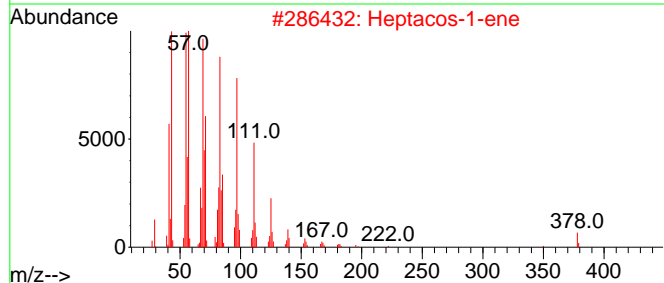
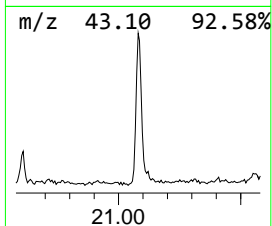
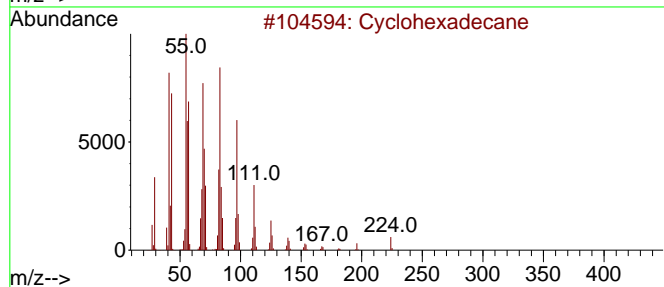
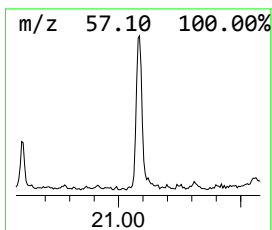
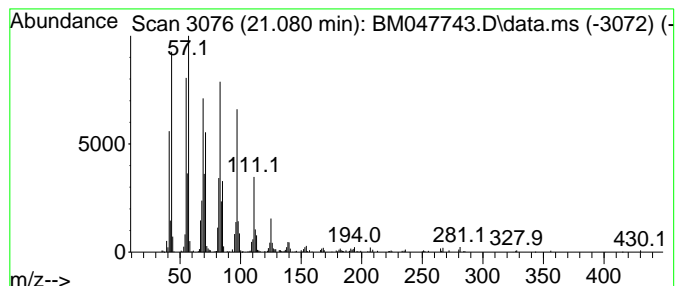
Quant Method : Z:\svoasrv\HPCHEM1\BNA_M\Methods\SFAM-EPA-BM092724.MA.M
 Quant Title : SVOA CALIBRATION

TIC Library : C:\Database\NIST20.L
 TIC Integration Parameters: LSCINT.P

 Peak Number 8 (DEL) Alkane: Cyclic21.080 Concentration Rank 6

R.T.	EstConc	Area	Relative to ISTD	R.T.
21.080	2.24 ng/ul	475493	Chrysene-d12	21.404

Hit#	of 5	Tentative ID	MW	MolForm	CAS#	Qual
1		Cyclohexadecane	224	C16H32	000295-65-8	94
2		Heptacos-1-ene	378	C27H54	015306-27-1	94
3		Heptadecyl heptafluorobutyrate	452	C21H35F7O2	959085-66-6	94
4		1-Hexacosene	364	C26H52	018835-33-1	94
5		Trifluoroacetoxy hexadecane	338	C18H33F3O2	006222-03-3	94



Data Path : Z:\svoasrv\HPCHEM1\BNA_M\Data\BM100124\
 Data File : BM047743.D
 Acq On : 01 Oct 2024 15:03
 Operator : RC/JU
 Sample : P4018-06
 Misc :
 ALS Vial : 7 Sample Multiplier: 1

Instrument :
 BNA_M
 ClientSampleId :
 DDCB2

Quant Method : Z:\svoasrv\HPCHEM1\BNA_M\Methods\SFAM-EPA-BM092724.MA.M
 Quant Title : SVOA CALIBRATION

TIC Library : C:\Database\NIST20.L
 TIC Integration Parameters: LSCINT.P

TIC Top Hit name	RT	EstConc	Units	Response	--Internal Standard--			
					#	RT	Resp	Conc
(DEL) Alkane: S...	7.446	3.4	ng/u1	320014	1	7.810	1861450	20.0
(DEL) Alkane: S...	9.045	3.8	ng/u1	350481	1	7.810	1861450	20.0
Benzene, 1,3,5-...	11.704	2.1	ng/u1	303114	2	10.604	2929800	20.0
(DEL) Alkane: S...	14.351	12.9	ng/u1	2234420	3	14.445	3474020	20.0
(DEL) Alkane: S...	15.298	2.2	ng/u1	376470	3	14.445	3474020	20.0
Benzophenone	15.798	3.5	ng/u1	614010	3	14.445	3474020	20.0
n-Hexadecanoic ...	18.074	2.8	ng/u1	545666	4	17.186	3907250	20.0
(DEL) Alkane: C...	21.080	2.2	ng/u1	475493	5	21.404	4236700	20.0