

Data Path : Z:\svoasrv\HPCHEM1\BNA_M\Data\BM100124\
 Data File : BM047753.D
 Acq On : 01 Oct 2024 22:18
 Operator : RC/JU
 Sample : P4018-19
 Misc :
 ALS Vial : 17 Sample Multiplier: 1

Instrument :
 BNA_M
 ClientSampleId :
 DDCE4

Integration Parameters: LSCINT.P

Integrator: RTE
 Smoothing : OFF
 Sampling : 1
 Start Thrs : 0.2
 Stop Thrs : 0

Filtering: 5
 Min Area: 0.1 % of largest Peak
 Max Peaks: 100
 Peak Location: TOP

If leading or trailing edge < 100 prefer < Baseline drop else tangent >
 Peak separation: 5

Method : Z:\svoasrv\HPCHEM1\BNA_M\Methods\SFAM-EPA-BM092724.MA.M
 Title : SVOA CALIBRATION

Signal : TIC: BM047753.D\data.ms

peak #	R.T. min	first scan	max scan	last scan	PK TY	peak height	corr. area	corr. % max.	% of total
1	3.257	42	46	51	rVB	38289	48493	1.18%	0.108%
2	3.451	77	79	83	rBV5	4228	4650	0.11%	0.010%
3	3.675	113	117	132	rBV	492341	760539	18.53%	1.687%
4	4.004	169	173	178	rVB2	17630	26479	0.65%	0.059%
5	4.728	294	296	300	rVB4	3119	4359	0.11%	0.010%
6	6.792	642	647	649	rBV4	3288	5800	0.14%	0.013%
7	6.975	671	678	687	rBV	576798	930016	22.66%	2.063%
8	7.139	700	706	715	rBV	460155	707125	17.23%	1.569%
9	7.339	733	740	753	rBV	569341	908498	22.13%	2.015%
10	7.439	753	757	761	rVV5	7301	9713	0.24%	0.022%
11	7.810	813	820	827	rBV	981476	1565150	38.13%	3.472%
12	7.875	829	831	840	rVB7	11370	19233	0.47%	0.043%
13	7.969	845	847	852	rVB5	3611	4120	0.10%	0.009%
14	8.028	852	857	858	rBV4	3928	5251	0.13%	0.012%
15	8.510	932	939	948	rBV	719672	1151908	28.06%	2.555%
16	8.963	1007	1016	1025	rBV	513140	864635	21.07%	1.918%
17	9.128	1040	1044	1051	rBV8	3963	7506	0.18%	0.017%
18	9.528	1106	1112	1119	rBV	54146	88755	2.16%	0.197%
19	9.680	1131	1138	1147	rBV	401183	680088	16.57%	1.509%
20	9.910	1173	1177	1184	rVB10	4107	6966	0.17%	0.015%
21	10.133	1213	1215	1222	rVB5	2409	4425	0.11%	0.010%
22	10.222	1222	1230	1242	rBV	675671	1154293	28.12%	2.561%
23	10.392	1255	1259	1263	rVB6	3845	5544	0.14%	0.012%
24	10.604	1284	1295	1303	rBV	1317870	2255423	54.95%	5.003%
25	10.733	1308	1317	1328	rBV	716661	1218191	29.68%	2.702%
26	11.139	1382	1386	1391	rBV4	21103	35474	0.86%	0.079%
27	11.386	1425	1428	1435	rVB5	5262	10496	0.26%	0.023%
28	11.916	1513	1518	1523	rVB7	2914	5473	0.13%	0.012%
29	12.186	1560	1564	1569	rBV4	12685	21302	0.52%	0.047%
30	13.286	1746	1751	1756	rBV9	5421	8132	0.20%	0.018%
31	13.345	1756	1761	1768	rVB4	13022	22673	0.55%	0.050%
32	13.404	1768	1771	1776	rBV5	3811	6747	0.16%	0.015%
33	13.851	1840	1847	1859	rBV	1255810	1707329	41.60%	3.787%
34	14.133	1884	1895	1905	rBV	1419898	2098413	51.12%	4.655%
35	14.351	1926	1932	1936	rBV3	18128	25943	0.63%	0.058%
36	14.439	1940	1947	1955	rBV	1929818	2928462	71.35%	6.496%

Data Path : Z:\svoasrv\HPCHEM1\BNA_M\Data\BM100124\
 Data File : BM047753.D
 Acq On : 01 Oct 2024 22:18
 Operator : RC/JU
 Sample : P4018-19
 Misc :
 ALS Vial : 17 Sample Multiplier: 1

Instrument :
 BNA_M
 ClientSampleId :
 DDCE4

Integration Parameters: LSCINT.P
 Integrator: RTE
 Smoothing : OFF Filtering: 5
 Sampling : 1 Min Area: 0.1 % of largest Peak
 Start Thrs: 0.2 Max Peaks: 100
 Stop Thrs : 0 Peak Location: TOP

If leading or trailing edge < 100 prefer < Baseline drop else tangent >
 Peak separation: 5

Method : Z:\svoasrv\HPCHEM1\BNA_M\Methods\SFAM-EPA-BM092724.MA.M
 Title : SVOA CALIBRATION

37	14.586	1965	1972	1974	rBV5	3355	4881	0.12%	0.011%
38	14.627	1974	1979	1990	rBV	335080	531617	12.95%	1.179%
39	14.851	2014	2017	2023	rVB7	7692	11873	0.29%	0.026%
40	15.062	2050	2053	2062	rVB6	8979	14512	0.35%	0.032%
41	15.245	2079	2084	2089	rBV6	7294	14633	0.36%	0.032%
42	15.298	2090	2093	2097	rVV4	8136	10434	0.25%	0.023%
43	15.433	2109	2116	2128	rBV	1863929	2581338	62.89%	5.726%
44	15.539	2128	2134	2144	rBV	281100	415264	10.12%	0.921%
45	15.674	2153	2157	2160	rBV4	7754	8362	0.20%	0.019%
46	15.798	2170	2178	2185	rBV	877764	1220308	29.73%	2.707%
47	16.121	2228	2233	2236	rBV6	3069	4888	0.12%	0.011%
48	16.157	2236	2239	2241	rBV3	5161	5627	0.14%	0.012%
49	16.356	2269	2273	2279	rVB2	24994	37457	0.91%	0.083%
50	16.833	2348	2354	2362	rBV3	61450	92202	2.25%	0.205%
51	16.962	2370	2376	2380	rVV6	5021	10607	0.26%	0.024%
52	17.180	2406	2413	2423	rBV	2374851	3366620	82.02%	7.468%
53	17.274	2423	2429	2439	rVV2	1901906	2738526	66.72%	6.075%
54	17.368	2442	2445	2448	rVB5	8705	11627	0.28%	0.026%
55	17.468	2459	2462	2468	rBV6	3900	4847	0.12%	0.011%
56	17.798	2513	2518	2522	rBV4	48285	62640	1.53%	0.139%
57	18.074	2560	2565	2572	rVV	119011	182451	4.45%	0.405%
58	18.145	2575	2577	2583	rVB3	9636	11588	0.28%	0.026%
59	18.386	2614	2618	2624	rBV8	12112	26906	0.66%	0.060%
60	18.450	2627	2629	2631	rVV3	4760	4152	0.10%	0.009%
61	18.927	2705	2710	2714	rBV5	16766	27406	0.67%	0.061%
62	19.127	2741	2744	2749	rBV4	26588	36644	0.89%	0.081%
63	19.197	2753	2756	2761	rVV	24650	36281	0.88%	0.080%
64	19.350	2778	2782	2788	rBV7	26470	37075	0.90%	0.082%
65	19.562	2812	2818	2826	rBV	2367848	3217730	78.39%	7.138%
66	21.080	3073	3076	3081	rVB4	86884	115700	2.82%	0.257%
67	21.403	3125	3131	3143	rBV	2472723	3643260	88.76%	8.082%
68	24.203	3599	3607	3621	rVB	1337411	3179039	77.45%	7.052%
69	24.409	3634	3642	3661	rVB	1603017	4104579	100.00%	9.105%

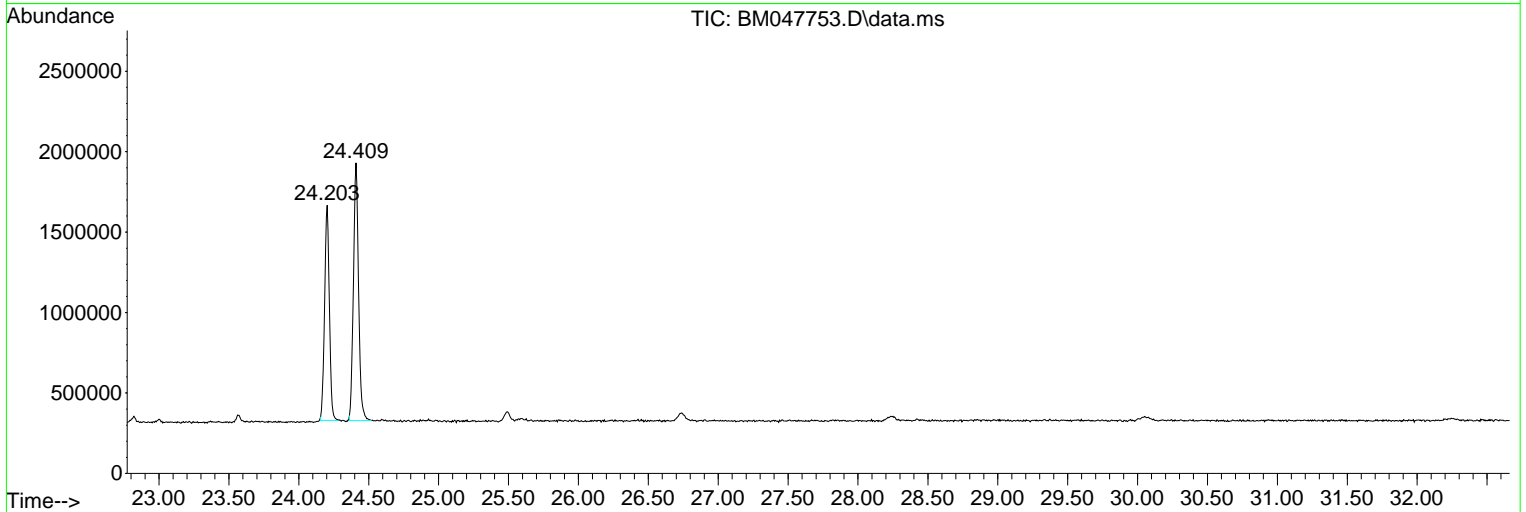
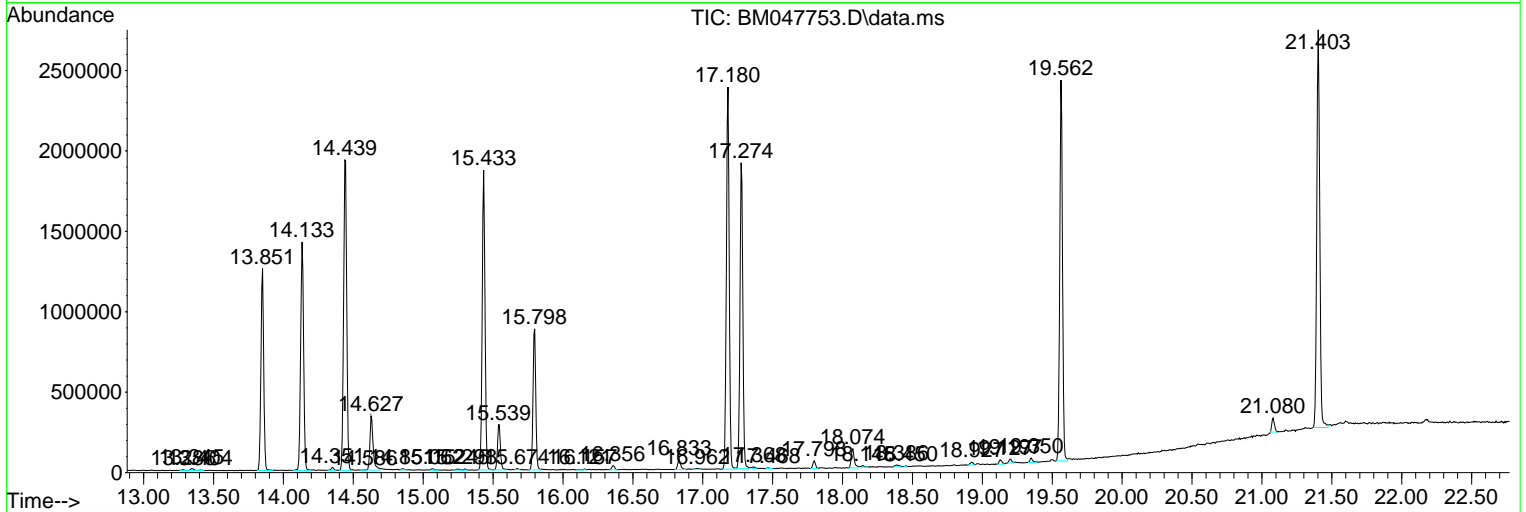
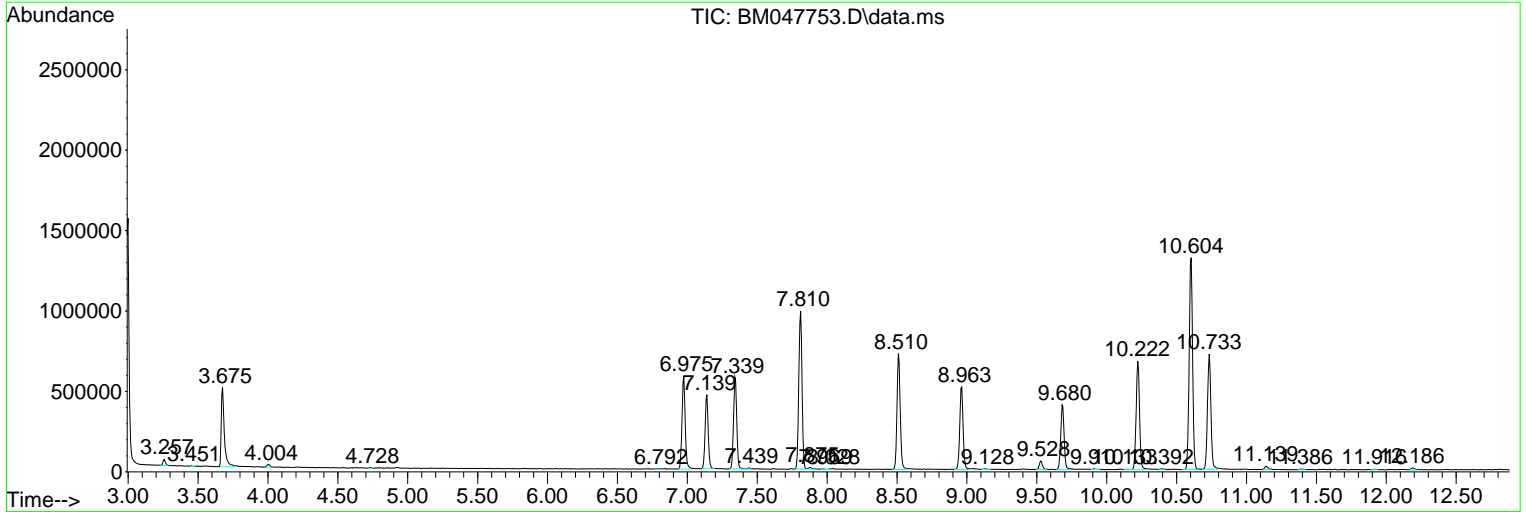
Sum of corrected areas: 45078678

Data Path : Z:\svoasrv\HPCHEM1\BNA_M\Data\BM100124\
 Data File : BM047753.D
 Acq On : 01 Oct 2024 22:18
 Operator : RC/JU
 Sample : P4018-19
 Misc :
 ALS Vial : 17 Sample Multiplier: 1

Instrument :
 BNA_M
 ClientSampleId :
 DDCE4

Quant Method : Z:\svoasrv\HPCHEM1\BNA_M\Methods\SFAM-EPA-BM092724.MA.M
 Quant Title : SVOA CALIBRATION

TIC Library : C:\Database\NIST20.L
 TIC Integration Parameters: LSCINT.P



Data Path : Z:\svoasrv\HPCHEM1\BNA_M\Data\BM100124\
 Data File : BM047753.D
 Acq On : 01 Oct 2024 22:18
 Operator : RC/JU
 Sample : P4018-19
 Misc :
 ALS Vial : 17 Sample Multiplier: 1

Instrument :
 BNA_M
 ClientSampleId :
 DDCE4

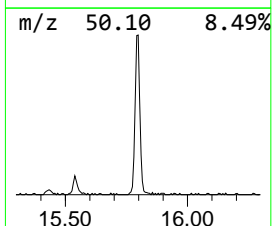
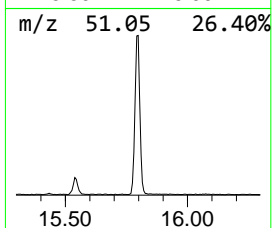
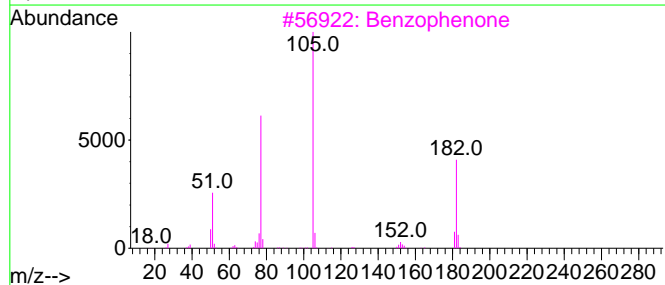
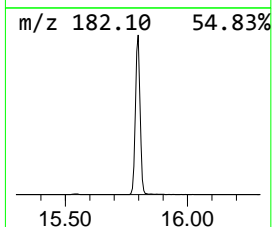
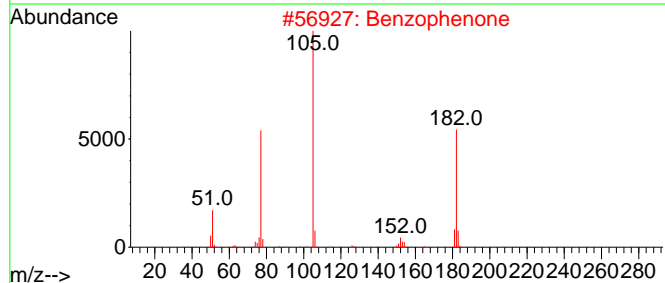
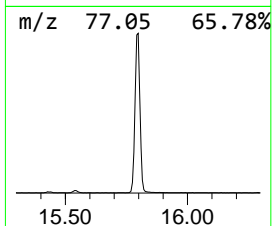
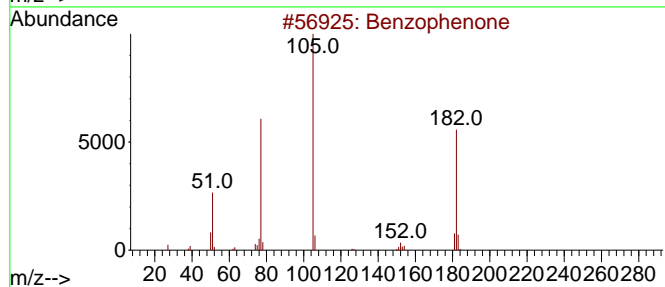
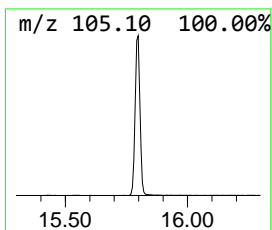
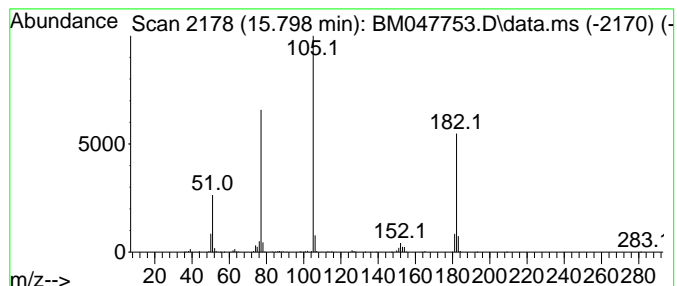
Quant Method : Z:\svoasrv\HPCHEM1\BNA_M\Methods\SFAM-EPA-BM092724.MA.M
 Quant Title : SVOA CALIBRATION

TIC Library : C:\Database\NIST20.L
 TIC Integration Parameters: LSCINT.P

 Peak Number 1 Benzophenone Concentration Rank 1

R.T.	EstConc	Area	Relative to ISTD	R.T.
15.798	8.33 ng/ul	1220310	Acenaphthene-d10	14.445

Hit#	of	5	Tentative ID	MW	MolForm	CAS#	Qual
1			Benzophenone	182	C13H10O	000119-61-9	96
2			Benzophenone	182	C13H10O	000119-61-9	95
3			Benzophenone	182	C13H10O	000119-61-9	94
4			Benzophenone	182	C13H10O	000119-61-9	91
5			Benzophenone	182	C13H10O	000119-61-9	91



Data Path : Z:\svoasrv\HPCHEM1\BNA_M\Data\BM100124\
Data File : BM047753.D
Acq On : 01 Oct 2024 22:18
Operator : RC/JU
Sample : P4018-19
Misc :
ALS Vial : 17 Sample Multiplier: 1

Instrument :
BNA_M
ClientSampleId :
DDCE4

Quant Method : Z:\svoasrv\HPCHEM1\BNA_M\Methods\SFAM-EPA-BM092724.MA.M
Quant Title : SVOA CALIBRATION

TIC Library : C:\Database\NIST0.L
TIC Integration Parameters: LSCINT.P

TIC Top Hit name	RT	EstConc	Units	Response	--Internal Standard--			
					#	RT	Resp	Conc
Benzophenone	15.798	8.3	ng/u1	1220310	3	14.445	2928460	20.0