

Data Path : Z:\HPCHEM1\BNA M\DATA\BM100215\
 Data File : BM002834.D
 Acq On : 02 Oct 2015 17:42
 Operator : UM/IZ
 Sample : PB85900BL
 Misc :
 ALS Vial : 6 Sample Multiplier: 1

Instrument :
 BNA_M
 ClientSampleId :
 SBLK00

Integration Parameters: LSCINT.P

Integrator: RTE
 Smoothing : OFF
 Sampling : 1
 Start Thrs: 0.2
 Stop Thrs : 0

Filtering: 5
 Min Area: 0.1 % of largest Peak
 Max Peaks: 100
 Peak Location: TOP

If leading or trailing edge < 100 prefer < Baseline drop else tangent >
 Peak separation: 5

Method : Z:\HPCHEM1\BNA M\METHODS\SOM02.2-EPA-BM092915.M
 Title : SVOA CALIBRATION

Signal : TIC

peak #	R.T. min	first scan	max scan	last scan	PK TY	peak height	corr. area	corr. % max.	% of total
1	3.352	40	45	53	rVV	13299	29502	2.00%	0.210%
2	3.446	56	61	68	rVB	26314	41484	2.82%	0.295%
3	3.758	110	114	121	rVB	16473	23385	1.59%	0.167%
4	5.093	336	341	342	rBV	1136	1617	0.11%	0.012%
5	7.804	795	802	819	rBV	239522	403851	27.42%	2.876%
6	7.975	824	831	846	rBV	202443	334677	22.73%	2.383%
7	8.199	862	869	884	rVB	262477	451141	30.64%	3.212%
8	8.687	945	952	961	rVB	163390	280995	19.08%	2.001%
9	9.387	1064	1071	1087	rBV	304769	519724	35.29%	3.701%
10	9.881	1147	1155	1168	rBV	224071	385786	26.20%	2.747%
11	10.610	1272	1279	1290	rBV	176610	308105	20.92%	2.194%
12	11.151	1365	1371	1388	rBV	272940	485547	32.97%	3.457%
13	11.539	1430	1437	1448	rBV	238776	416419	28.28%	2.965%
14	11.669	1452	1459	1474	rBV	297352	540256	36.69%	3.847%
15	13.086	1696	1700	1704	rBV	3230	4925	0.33%	0.035%
16	14.657	1961	1967	1974	rBV	506343	712560	48.39%	5.074%
17	14.986	2016	2023	2032	rBV	614307	950179	64.52%	6.766%
18	15.280	2067	2073	2081	rBV2	328954	516902	35.10%	3.681%
19	15.457	2097	2103	2125	rBV	136695	258937	17.58%	1.844%
20	16.257	2232	2239	2249	rBV	753852	1140432	77.44%	8.121%
21	16.380	2254	2260	2269	rBV	141670	205139	13.93%	1.461%
22	16.486	2274	2278	2283	rBV	5761	7483	0.51%	0.053%
23	17.992	2528	2534	2541	rBV	407275	575586	39.09%	4.099%
24	18.092	2544	2551	2558	rBV2	820682	1184716	80.45%	8.436%
25	19.962	2866	2869	2876	rVB	7923	9771	0.66%	0.070%
26	20.215	2908	2912	2916	rVB	5839	7528	0.51%	0.054%
27	20.321	2924	2930	2939	rBV	974437	1330330	90.34%	9.473%
28	22.080	3223	3229	3236	rBV	524570	718491	48.79%	5.116%
29	24.503	3632	3641	3653	rBV	661648	1472599	100.00%	10.486%
30	24.662	3661	3668	3680	rVB2	323531	725452	49.26%	5.166%

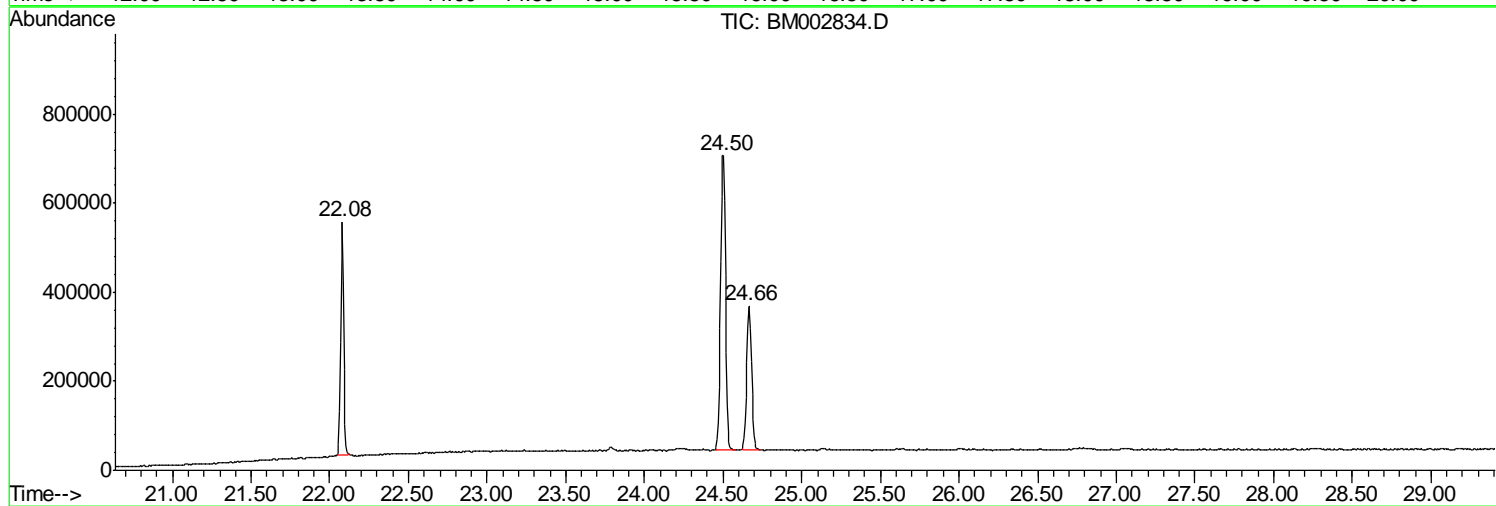
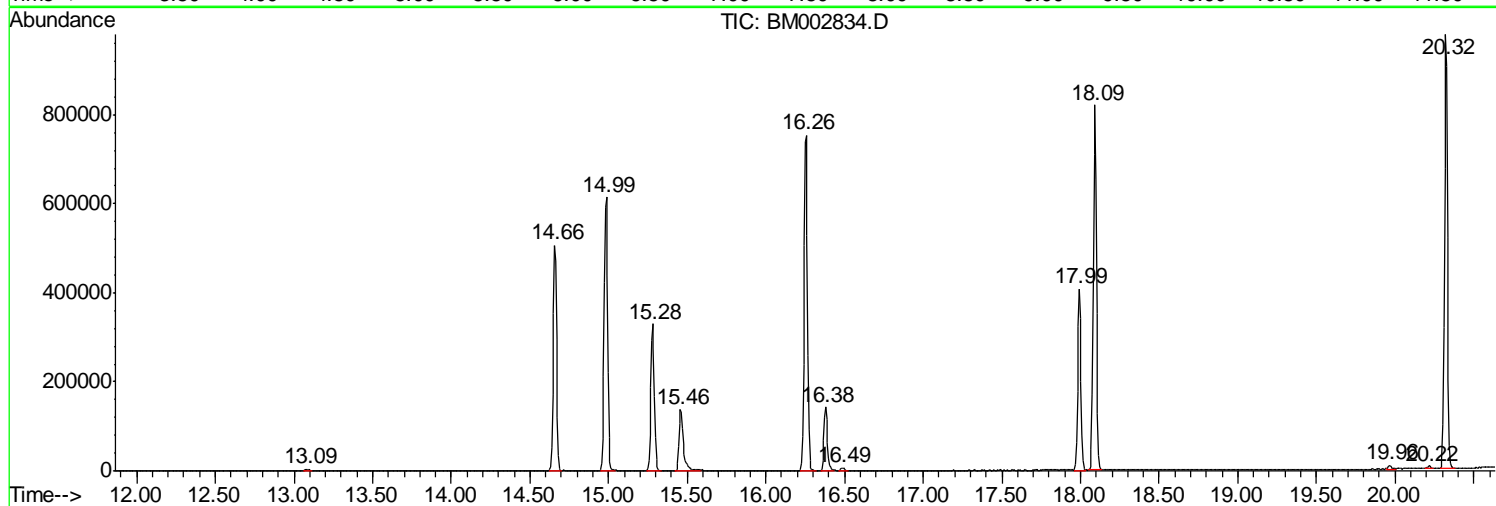
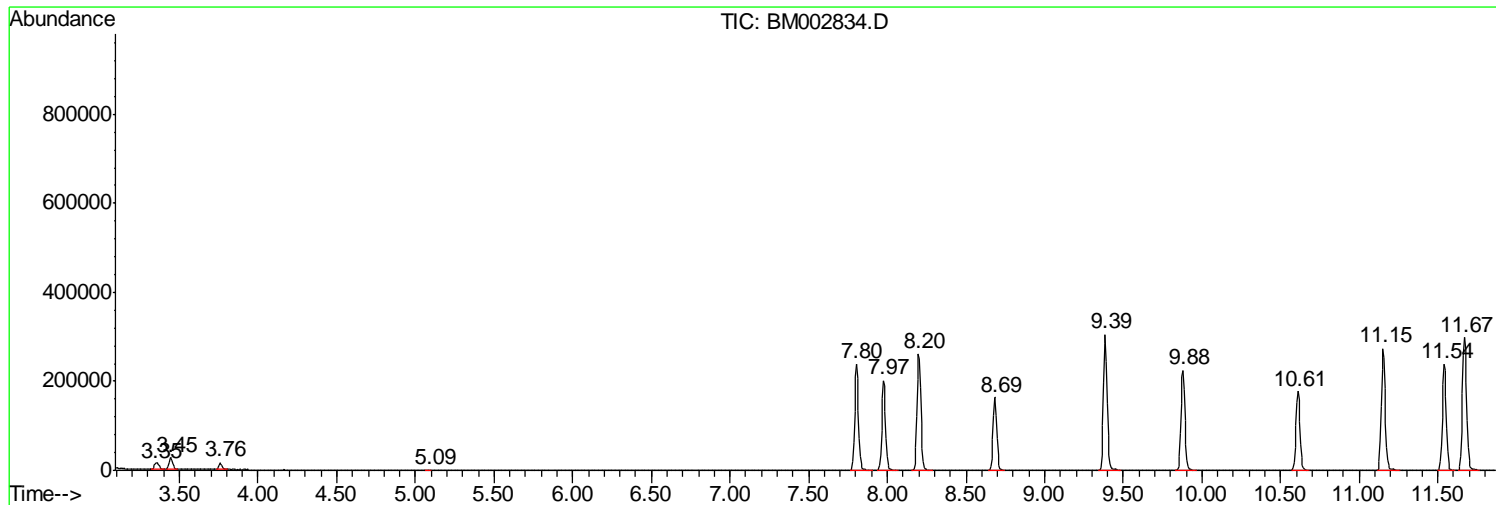
Sum of corrected areas: 14043519

Data Path : Z:\HPCHEM1\BNA M\DATA\BM100215\
Data File : BM002834.D
Acq On : 02 Oct 2015 17:42
Operator : UM/IZ
Sample : PB85900BL
Misc :
ALS Vial : 6 Sample Multiplier: 1

Instrument :
BNA_M
ClientSampled :
SBLK00

Quant Method : Z:\HPCHEM1\BNA M\METHOD\SOM02.2-EPA-BM092915.M
Quant Title : SVOA CALIBRATION

TIC Library : C:\DATABASE\NIST02.L
TIC Integration Parameters: LSCINT.P



Data Path : Z:\HPCHEM1\BNA M\DATA\BM100215\
 Data File : BM002834.D
 Acq On : 02 Oct 2015 17:42
 Operator : UM/IZ
 Sample : PB85900BL
 Misc :
 ALS Vial : 6 Sample Multiplier: 1

Instrument :
 BNA_M
 ClientSampleID :
 SBLK00

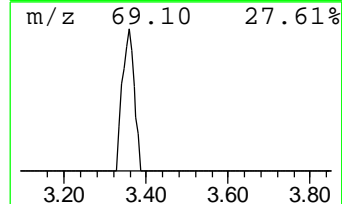
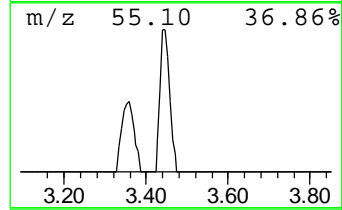
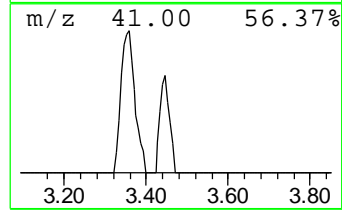
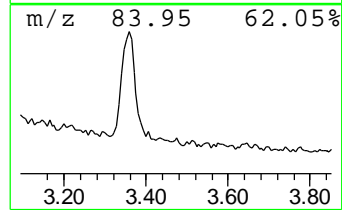
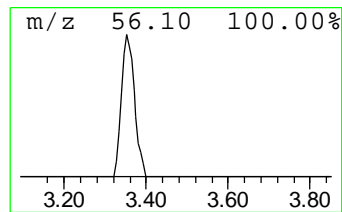
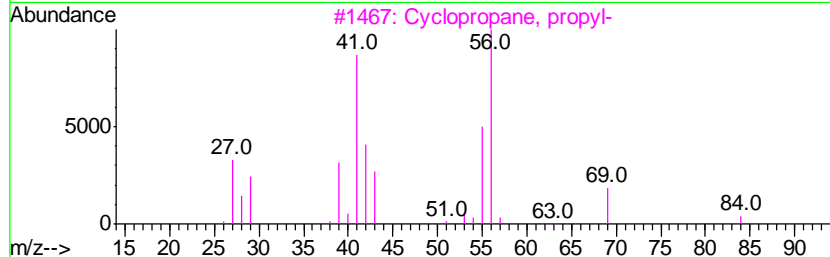
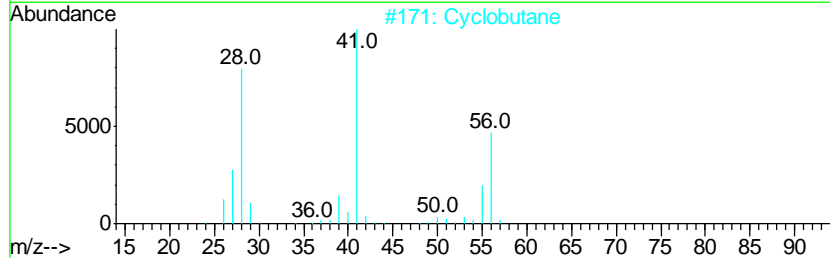
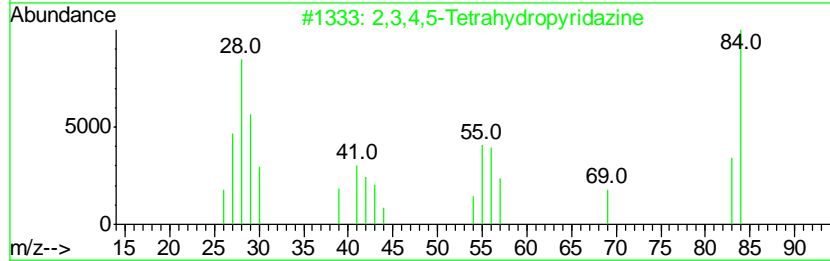
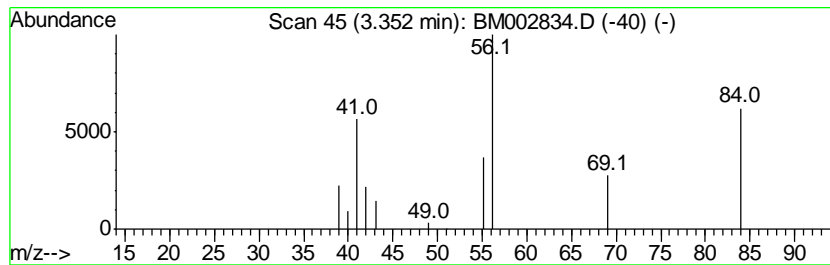
Quant Method : Z:\HPCHEM1\BNA M\METHOD\SOM02.2-EPA-BM092915.M
 Quant Title : SVOA CALIBRATION

TIC Library : C:\DATABASE\NIST02.L
 TIC Integration Parameters: LSCINT.P

 Peak Number 1 unknown-01 Concentration Rank 2

R.T.	EstConc	Area	Relative to ISTD	R.T.
3.35	2.10 ng/ul	29502	1,4-Dichlorobenzene-d4	8.69

Hit#	of	Tentative ID	MW	MolForm	CAS#	Qual
1	5	2,3,4,5-Tetrahydropyridazine	84	C4H8N2	000694-06-4	38
2		Cyclobutane	56	C4H8	000287-23-0	9
3		Cyclopropane, propyl-	84	C6H12	002415-72-7	9
4		1-Pentene, 2-methyl-	84	C6H12	000763-29-1	9
5		2-Butene, (Z)-	56	C4H8	000590-18-1	7



Data Path : Z:\HPCHEM1\BNA M\DATA\BM100215\
 Data File : BM002834.D
 Acq On : 02 Oct 2015 17:42
 Operator : UM/IZ
 Sample : PB85900BL
 Misc :
 ALS Vial : 6 Sample Multiplier: 1

Instrument :
 BNA_M
 ClientSampleID :
 SBLK00

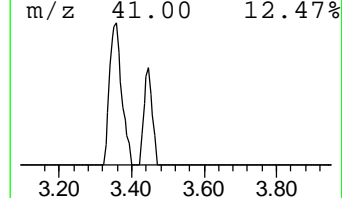
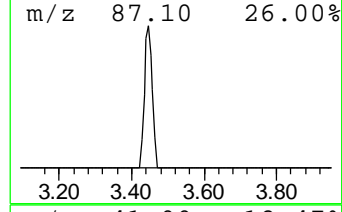
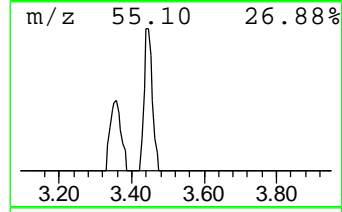
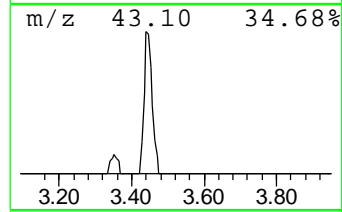
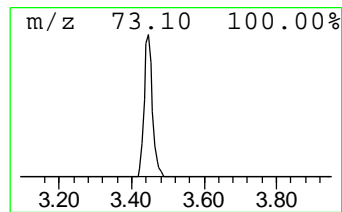
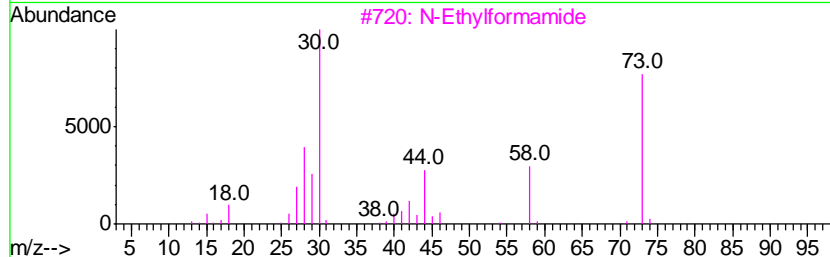
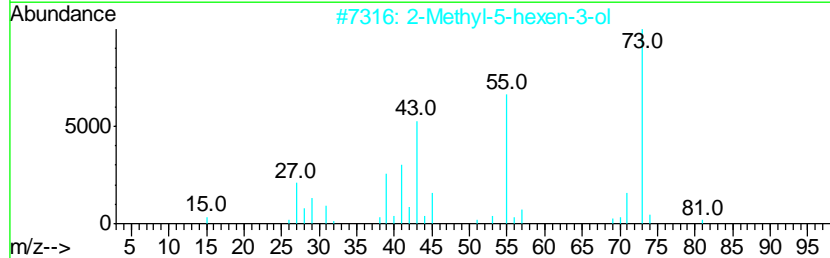
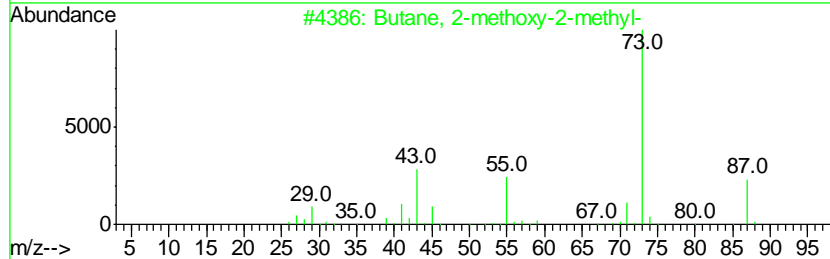
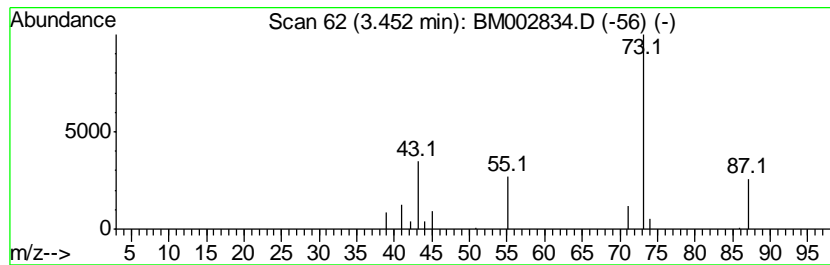
Quant Method : Z:\HPCHEM1\BNA M\METHOD\SOM02.2-EPA-BM092915.M
 Quant Title : SVOA CALIBRATION

TIC Library : C:\DATABASE\NIST02.L
 TIC Integration Parameters: LSCINT.P

 Peak Number 2 Butane, 2-methoxy-2-methyl- Concentration Rank 1

R.T.	EstConc	Area	Relative to ISTD	R.T.
3.45	2.95 ng/ul	41484	1,4-Dichlorobenzene-d4	8.69

Hit#	of	Tentative ID	MW	MolForm	CAS#	Qual
1	5	Butane, 2-methoxy-2-methyl-	102	C6H14O	000994-05-8	78
2		2-Methyl-5-hexen-3-ol	114	C7H14O	032815-70-6	9
3		N-Ethylformamide	73	C3H7NO	000627-45-2	5
4		Acetamide, N-ethyl-	87	C4H9NO	000625-50-3	5
5		Acetamide, N-ethyl-	87	C4H9NO	000625-50-3	5



Data Path : Z:\HPCHEM1\BNA_M\DATA\BM100215\
Data File : BM002834.D
Acq On : 02 Oct 2015 17:42
Operator : UM/IZ
Sample : PB85900BL
Misc :
ALS Vial : 6 Sample Multiplier: 1

Instrument :
BNA_M
ClientSampleId :
SBLK00

Quant Method : Z:\HPCHEM1\BNA_M\METHOD\SOM02.2-EPA-BM092915.M
Quant Title : SVOA CALIBRATION

TIC Library : C:\DATABASE\NIST02.L
TIC Integration Parameters: LSCINT.P

TIC Top Hit name	RT	EstConc	Units	Response	--Internal Standard--			
					#	RT	Resp	Conc
unknown-01	3.35	2.1	ng/ul	29502	1	8.69	280995	20.0
Butane, 2-methoxy...	3.45	3.0	ng/ul	41484	1	8.69	280995	20.0