

Data Path : Z:\HPCHEM1\BNA M\DATA\BM100215\
 Data File : BM002841.D
 Acq On : 02 Oct 2015 21:54
 Operator : UM/IZ
 Sample : G3850-18
 Misc :
 ALS Vial : 13 Sample Multiplier: 1

Instrument :
 BNA_M
 ClientSampleId :
 COGN2

Integration Parameters: LSCINT.P

Integrator: RTE
 Smoothing : OFF
 Sampling : 1
 Start Thrs: 0.2
 Stop Thrs : 0

Filtering: 5
 Min Area: 0.1 % of largest Peak
 Max Peaks: 100
 Peak Location: TOP

If leading or trailing edge < 100 prefer < Baseline drop else tangent >
 Peak separation: 5

Method : Z:\HPCHEM1\BNA M\METHODS\SOM02.2-EPA-BM092915.M
 Title : SVOA CALIBRATION

Signal : TIC

peak #	R.T. min	first scan	max scan	last scan	PK TY	peak height	corr. area	corr. % max.	% of total
1	3.352	38	45	56	rBV	147863	327918	23.03%	2.453%
2	3.446	56	61	75	rVB	324758	502080	35.25%	3.756%
3	3.763	112	115	119	rVB	2080	2948	0.21%	0.022%
4	4.616	255	260	265	rVB2	2302	3711	0.26%	0.028%
5	7.810	798	803	815	rBV	45134	74624	5.24%	0.558%
6	7.975	824	831	844	rBV	176433	293730	20.62%	2.198%
7	8.204	863	870	882	rVB	190890	325365	22.85%	2.434%
8	8.687	944	952	961	rVB	182541	314048	22.05%	2.350%
9	9.387	1065	1071	1083	rVB	137013	240294	16.87%	1.798%
10	9.881	1147	1155	1169	rVB	203786	351872	24.71%	2.633%
11	10.610	1272	1279	1287	rBV	164296	280471	19.69%	2.098%
12	11.157	1364	1372	1387	rBV	240719	431042	30.27%	3.225%
13	11.539	1430	1437	1445	rBV	265397	466036	32.72%	3.487%
14	12.192	1542	1548	1556	rVB	9814	16351	1.15%	0.122%
15	12.945	1671	1676	1682	rVB	12125	16228	1.14%	0.121%
16	13.080	1695	1699	1704	rVB	3087	4532	0.32%	0.034%
17	13.869	1830	1833	1836	rBV	1946	1907	0.13%	0.014%
18	14.663	1961	1968	1974	rBV	478639	676996	47.54%	5.065%
19	14.986	2016	2023	2037	rBV	590826	895430	62.87%	6.699%
20	15.280	2066	2073	2080	rVB2	378739	582572	40.91%	4.359%
21	15.474	2102	2106	2120	rBV	18992	37386	2.63%	0.280%
22	16.257	2232	2239	2249	rVB	719594	1097452	77.06%	8.211%
23	16.380	2255	2260	2267	rBV	137754	190819	13.40%	1.428%
24	16.486	2274	2278	2282	rVB2	5427	7285	0.51%	0.055%
25	16.945	2353	2356	2359	rBV	1329	1450	0.10%	0.011%
26	17.080	2377	2379	2384	rVB2	1453	1502	0.11%	0.011%
27	17.780	2494	2498	2504	rBV3	1413	2848	0.20%	0.021%
28	17.992	2528	2534	2544	rVB	452152	651907	45.77%	4.877%
29	18.092	2544	2551	2561	rBV	818201	1170869	82.21%	8.760%
30	18.868	2681	2683	2689	rVB	2242	2869	0.20%	0.021%
31	19.368	2764	2768	2769	rBV	1215	1534	0.11%	0.011%
32	19.962	2866	2869	2874	rVB	7445	9540	0.67%	0.071%
33	20.086	2888	2890	2894	rVB2	1282	1501	0.11%	0.011%
34	20.215	2908	2912	2917	rBV	6861	10360	0.73%	0.078%

Data Path : Z:\HPCHEM1\BNA M\DATA\BM100215\
Data File : BM002841.D
Acq On : 02 Oct 2015 21:54
Operator : UM/IZ
Sample : G3850-18
Misc :
ALS Vial : 13 Sample Multiplier: 1

Instrument :
BNA_M
ClientSampleId :
COGN2

Integration Parameters: LSCINT.P
Integrator: RTE
Smoothing : OFF Filtering: 5
Sampling : 1 Min Area: 0.1 % of largest Peak
Start Thrs: 0.2 Max Peaks: 100
Stop Thrs : 0 Peak Location: TOP

If leading or trailing edge < 100 prefer < Baseline drop else tangent >
Peak separation: 5

Method : Z:\HPCHEM1\BNA M\METHODS\SOM02.2-EPA-BM092915.M
Title : SVOA CALIBRATION

35	20.256	2917	2919	2923	rVB3	1998	1875	0.13%	0.014%
36	20.321	2923	2930	2938	rBV	925198	1325135	93.05%	9.914%
37	22.080	3224	3229	3236	rBV	566074	808483	56.77%	6.049%
38	24.503	3633	3641	3651	rVB	662953	1424160	100.00%	10.655%
39	24.668	3662	3669	3681	rVB	371037	811183	56.96%	6.069%

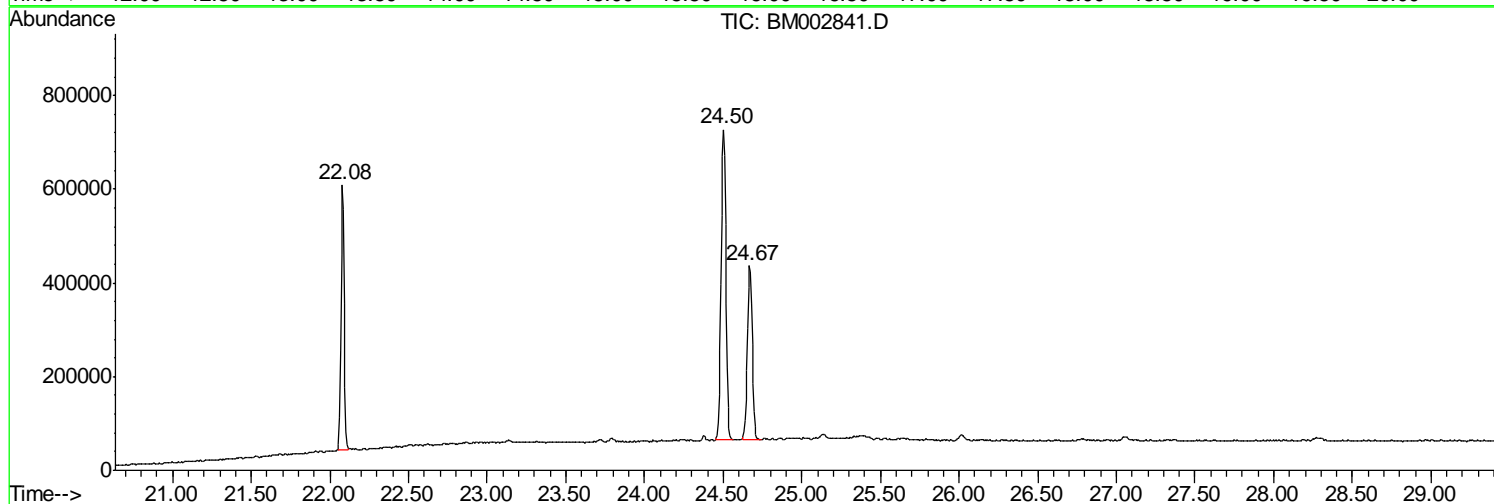
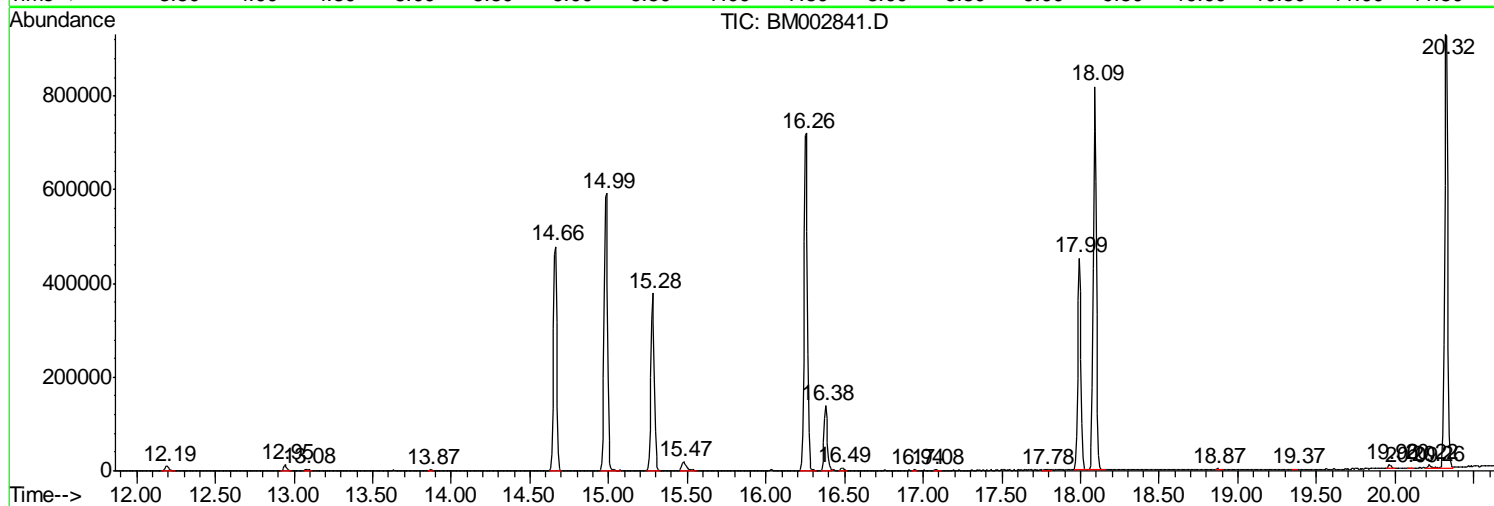
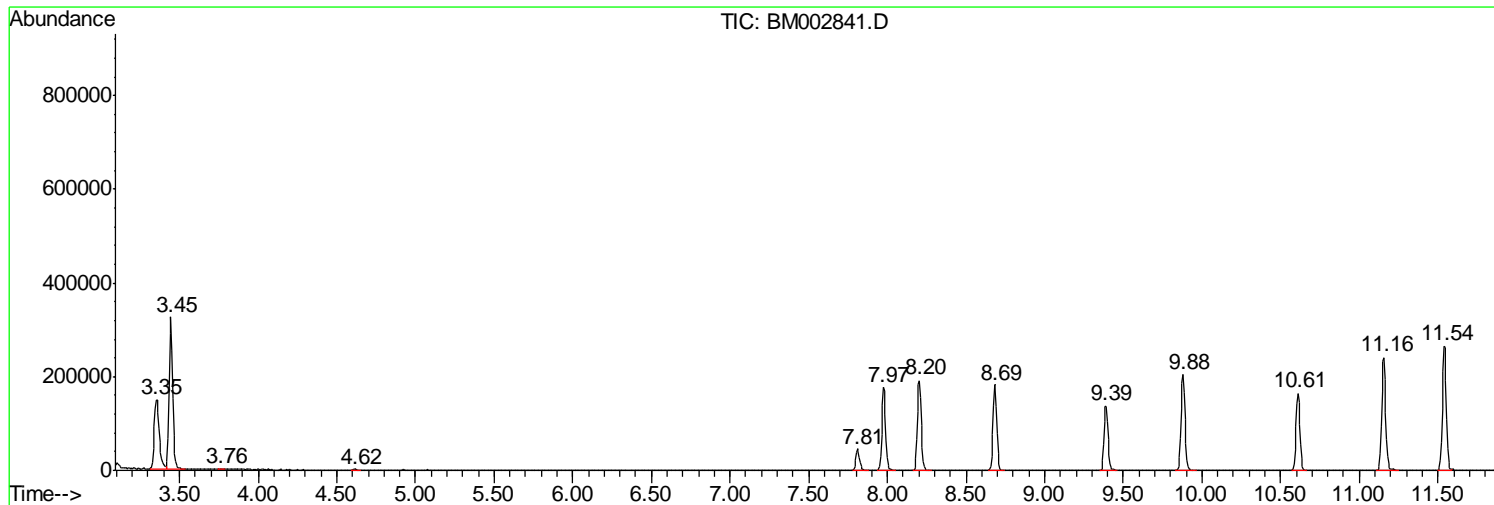
Sum of corrected areas: 13366313

Data Path : Z:\HPCHEM1\BNA M\DATA\BM100215\
Data File : BM002841.D
Acq On : 02 Oct 2015 21:54
Operator : UM/IZ
Sample : G3850-18
Misc :
ALS Vial : 13 Sample Multiplier: 1

Instrument :
BNA_M
ClientSampled :
COGN2

Quant Method : Z:\HPCHEM1\BNA M\METHOD\SOM02.2-EPA-BM092915.M
Quant Title : SVOA CALIBRATION

TIC Library : C:\DATABASE\NIST02.L
TIC Integration Parameters: LSCINT.P



Data Path : Z:\HPCHEM1\BNA M\DATA\BM100215\
 Data File : BM002841.D
 Acq On : 02 Oct 2015 21:54
 Operator : UM/IZ
 Sample : G3850-18
 Misc :
 ALS Vial : 13 Sample Multiplier: 1

Instrument :
 BNA_M
 ClientSampled :
 COGN2

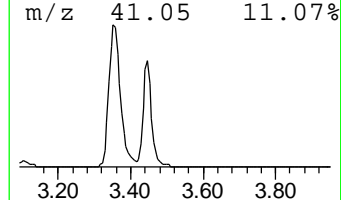
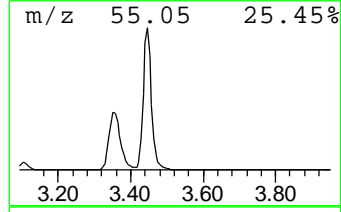
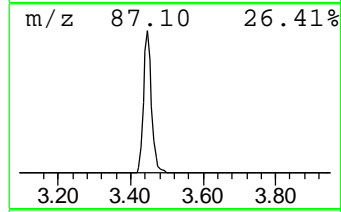
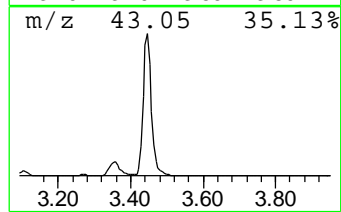
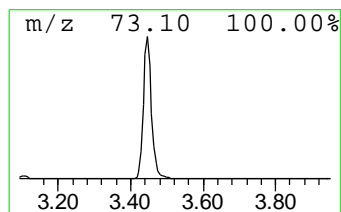
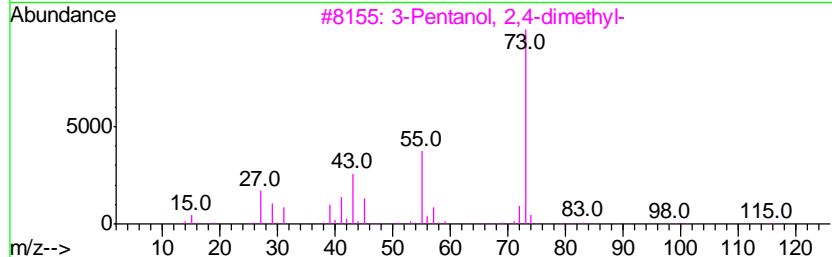
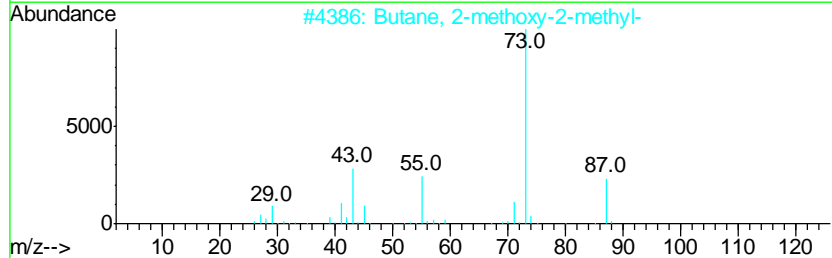
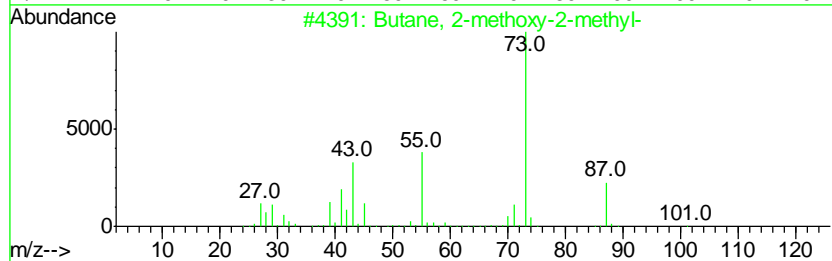
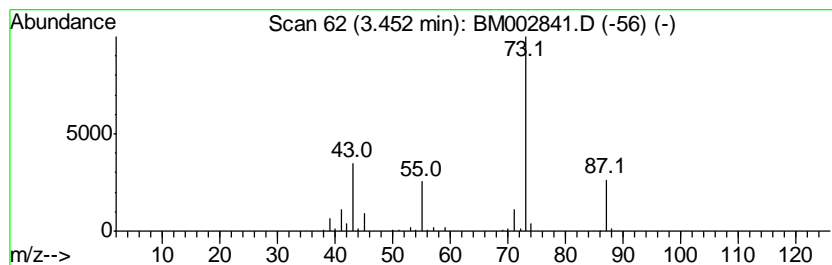
Quant Method : Z:\HPCHEM1\BNA M\METHOD\SOM02.2-EPA-BM092915.M
 Quant Title : SVOA CALIBRATION

TIC Library : C:\DATABASE\NIST02.L
 TIC Integration Parameters: LSCINT.P

 Peak Number 2 Butane, 2-methoxy-2-methyl- Concentration Rank 1

R.T.	EstConc	Area	Relative to ISTD	R.T.
3.45	31.97 ng/ul	502080	1,4-Dichlorobenzene-d4	8.68

Hit#	of	Tentative ID	MW	MolForm	CAS#	Qual
1	5	Butane, 2-methoxy-2-methyl-	102	C6H14O	000994-05-8	83
2		Butane, 2-methoxy-2-methyl-	102	C6H14O	000994-05-8	78
3		3-Pentanol, 2,4-dimethyl-	116	C7H16O	000600-36-2	23
4		Pentane, 3-methoxy-	102	C6H14O	036839-67-5	23
5		Acetamide, N-ethyl-	87	C4H9NO	000625-50-3	10



Data Path : Z:\HPCHEM1\BNA_M\DATA\BM100215\
Data File : BM002841.D
Acq On : 02 Oct 2015 21:54
Operator : UM/IZ
Sample : G3850-18
Misc :
ALS Vial : 13 Sample Multiplier: 1

Instrument :
BNA_M
ClientSampleId :
C0GN2

Quant Method : Z:\HPCHEM1\BNA_M\METHOD\SOM02.2-EPA-BM092915.M
Quant Title : SVOA CALIBRATION

TIC Library : C:\DATABASE\NIST02.L
TIC Integration Parameters: LSCINT.P

TIC Top Hit name	RT	EstConc	Units	Response	--Internal Standard--			
					#	RT	Resp	Conc
Butane, 2-methoxy...	3.45	32.0	ng/ul	502080	1	8.68	314048	20.0