

Data Path : Z:\svoasrv\HPCHEM1\BNA\_M\Data\BM100324\  
 Data File : BM047844.D  
 Acq On : 04 Oct 2024 15:39  
 Operator : RC/JU  
 Sample : P4017-11ME  
 Misc :  
 ALS Vial : 44 Sample Multiplier: 1

Instrument :  
 BNA\_M  
 ClientSampleId :  
 DDC86ME

Integration Parameters: LSCINT.P

Integrator: RTE  
 Smoothing : OFF  
 Sampling : 1  
 Start Thrs: 0.2  
 Stop Thrs : 0

Filtering: 5  
 Min Area: 0.1 % of Largest Peak  
 Max Peaks: 100  
 Peak Location: TOP

If leading or trailing edge < 100 prefer < Baseline drop else tangent >  
 Peak separation: 5

Method : Z:\svoasrv\HPCHEM1\BNA\_M\Methods\SFAM-EPA-BM092724.MA.M  
 Title : SVOA CALIBRATION

Signal : TIC: BM047844.D\data.ms

peak #	R.T. min	first scan	max scan	last scan	PK TY	peak height	corr. area	corr. % max.	% of total
1	3.669	112	116	128	rBV	589770	922326	1.76%	0.476%
2	6.963	670	676	683	rVV	1283257	2108534	4.03%	1.087%
3	7.128	694	704	711	rBV	1033505	1602891	3.06%	0.826%
4	7.334	729	739	751	rVB	1274620	2091622	4.00%	1.078%
5	7.451	751	759	764	rBV2	160267	385767	0.74%	0.199%
6	7.728	795	806	810	rBV4	78235	214956	0.41%	0.111%
7	7.798	810	818	824	rVV2	1075017	1915043	3.66%	0.987%
8	7.875	825	831	835	rVV2	89690	205026	0.39%	0.106%
9	8.334	905	909	916	rVV2	153712	330817	0.63%	0.171%
10	8.504	933	938	945	rVV	1549692	2506369	4.79%	1.292%
11	8.569	945	949	953	rVV	166111	266342	0.51%	0.137%
12	8.798	984	988	997	rVB2	213552	385089	0.74%	0.199%
13	8.910	997	1007	1009	rBV2	199191	403353	0.77%	0.208%
14	8.951	1009	1014	1020	rVV	1161727	1984578	3.79%	1.023%
15	9.034	1020	1028	1033	rVV	358020	638706	1.22%	0.329%
16	9.151	1039	1048	1055	rBV7	143588	383481	0.73%	0.198%
17	9.587	1116	1122	1130	rVB2	155198	285575	0.55%	0.147%
18	9.675	1130	1137	1143	rBV	1019032	1688194	3.23%	0.870%
19	9.804	1151	1159	1164	rBV3	82897	189660	0.36%	0.098%
20	10.216	1220	1229	1238	rVV	1479120	2612871	5.00%	1.347%
21	10.592	1282	1293	1300	rBV	6529816	10837624	20.72%	5.588%
22	10.716	1307	1314	1328	rVB3	2832542	5647234	10.80%	2.912%
23	10.875	1335	1341	1353	rVB3	245427	593113	1.13%	0.306%
24	10.992	1353	1361	1369	rBV3	176366	329676	0.63%	0.170%
25	11.104	1371	1380	1389	rBV	1463322	2336429	4.47%	1.205%
26	11.486	1440	1445	1459	rVB3	335354	824052	1.58%	0.425%
27	11.628	1464	1469	1475	rVV3	133803	234715	0.45%	0.121%
28	11.716	1479	1484	1492	rVB	171581	281376	0.54%	0.145%
29	11.851	1498	1507	1516	rVB4	252508	671334	1.28%	0.346%
30	11.939	1516	1522	1528	rBV	234784	370726	0.71%	0.191%
31	12.016	1529	1535	1546	rVB2	593083	1018955	1.95%	0.525%
32	12.251	1570	1575	1582	rVB	194115	343563	0.66%	0.177%
33	12.375	1587	1596	1600	rBV2	115615	281214	0.54%	0.145%
34	12.428	1600	1605	1611	rVV4	1773598	3256499	6.23%	1.679%
35	12.475	1611	1613	1622	rVB	320025	410221	0.78%	0.212%
36	12.686	1644	1649	1658	rVB	294053	499251	0.95%	0.257%

Data Path : Z:\svoasrv\HPCHEM1\BNA\_M\Data\BM100324\  
 Data File : BM047844.D  
 Acq On : 04 Oct 2024 15:39  
 Operator : RC/JU  
 Sample : P4017-11ME  
 Misc :  
 ALS Vial : 44 Sample Multiplier: 1

Instrument :  
 BNA\_M  
 ClientSampleId :  
 DDC86ME

Integration Parameters: LSCINT.P

Integrator: RTE  
 Smoothing : OFF  
 Sampling : 1  
 Start Thrs: 0.2  
 Stop Thrs : 0

Filtering: 5  
 Min Area: 0.1 % of Largest Peak  
 Max Peaks: 100  
 Peak Location: TOP

If leading or trailing edge < 100 prefer < Baseline drop else tangent >  
 Peak separation: 5

Method : Z:\svoasrv\HPCHEM1\BNA\_M\Methods\SFAM-EPA-BM092724.MA.M  
 Title : SVOA CALIBRATION

37	12.780	1658	1665	1670	rBV2	311772	518737	0.99%	0.267%
38	12.833	1670	1674	1679	rVB2	182758	255011	0.49%	0.131%
39	13.010	1694	1704	1710	rVB3	556809	1055090	2.02%	0.544%
40	13.075	1710	1715	1724	rVB	166894	289597	0.55%	0.149%
41	13.169	1725	1731	1737	rBV4	109702	208156	0.40%	0.107%
42	13.269	1743	1748	1753	rVB	620228	862555	1.65%	0.445%
43	13.322	1753	1757	1760	rBV4	137543	216260	0.41%	0.112%
44	13.398	1766	1770	1778	rVB	195093	340177	0.65%	0.175%
45	13.486	1778	1785	1794	rVB2	1181811	1970961	3.77%	1.016%
46	13.622	1795	1808	1812	rBV4	601259	1462860	2.80%	0.754%
47	13.657	1812	1814	1821	rVB4	160566	222815	0.43%	0.115%
48	13.757	1821	1831	1834	rBV	448706	923937	1.77%	0.476%
49	13.798	1834	1838	1841	rVV2	377146	726996	1.39%	0.375%
50	13.845	1841	1846	1852	rVV	2643473	3700327	7.08%	1.908%
51	13.986	1868	1870	1874	rVV2	150144	209367	0.40%	0.108%
52	14.127	1885	1894	1898	rBV	3032256	4623187	8.84%	2.384%
53	14.163	1898	1900	1907	rVB2	337806	365084	0.70%	0.188%
54	14.245	1907	1914	1918	rBV2	186398	268337	0.51%	0.138%
55	14.339	1925	1930	1935	rBV	1073605	1411585	2.70%	0.728%
56	14.386	1935	1938	1941	rVV2	285678	415934	0.80%	0.214%
57	14.433	1941	1946	1953	rVV	2186764	3227599	6.17%	1.664%
58	14.627	1973	1979	1985	rBV2	1279256	2046774	3.91%	1.055%
59	14.692	1986	1990	1994	rVB	250985	365243	0.70%	0.188%
60	14.751	1994	2000	2003	rBV7	87215	189379	0.36%	0.098%
61	14.833	2011	2014	2020	rVB3	231440	358618	0.69%	0.185%
62	14.910	2020	2027	2030	rBV2	198472	356386	0.68%	0.184%
63	14.974	2031	2038	2042	rVB4	251066	473770	0.91%	0.244%
64	15.063	2043	2053	2058	rBV	6673539	10032669	19.18%	5.173%
65	15.163	2063	2070	2076	rBV3	278545	637140	1.22%	0.329%
66	15.292	2088	2092	2097	rVB	524100	704822	1.35%	0.363%
67	15.427	2109	2115	2121	rVB	3796939	5358142	10.25%	2.763%
68	15.533	2126	2133	2142	rBV	1301731	2137865	4.09%	1.102%
69	15.698	2157	2161	2170	rVB3	360755	657079	1.26%	0.339%
70	15.792	2172	2177	2183	rVV	452917	741461	1.42%	0.382%
71	15.904	2193	2196	2206	rVB5	102522	222071	0.42%	0.115%
72	16.151	2233	2238	2251	rBV	643205	1107734	2.12%	0.571%
73	16.251	2251	2255	2259	rBV4	124543	212632	0.41%	0.110%
74	16.845	2346	2356	2361	rBV	27674529	52298687	100.00%	26.967%
75	16.939	2368	2372	2377	rVB	578612	678218	1.30%	0.350%
76	16.992	2377	2381	2390	rVB2	312994	528733	1.01%	0.273%

Data Path : Z:\svoasrv\HPCHEM1\BNA\_M\Data\BM100324\  
 Data File : BM047844.D  
 Acq On : 04 Oct 2024 15:39  
 Operator : RC/JU  
 Sample : P4017-11ME  
 Misc :  
 ALS Vial : 44 Sample Multiplier: 1

Instrument :  
 BNA\_M  
 ClientSampleId :  
 DDC86ME

Integration Parameters: LSCINT.P

Integrator: RTE  
 Smoothing : OFF  
 Sampling : 1  
 Start Thrs: 0.2  
 Stop Thrs : 0

Filtering: 5  
 Min Area: 0.1 % of Largest Peak  
 Max Peaks: 100  
 Peak Location: TOP

If leading or trailing edge < 100 prefer < Baseline drop else tangent >  
 Peak separation: 5

Method : Z:\svoasrv\HPCHEM1\BNA\_M\Methods\SFAM-EPA-BM092724.MA.M  
 Title : SVOA CALIBRATION

77	17.174	2407	2412	2417	rBV	2471142	3507215	6.71%	1.808%
78	17.215	2417	2419	2422	rVV	200691	227398	0.43%	0.117%
79	17.274	2423	2429	2435	rVB	3953732	5684891	10.87%	2.931%
80	17.474	2460	2463	2469	rVB2	159856	233126	0.45%	0.120%
81	17.674	2493	2497	2502	rBV	532670	654410	1.25%	0.337%
82	17.751	2507	2510	2513	rVV	158654	205068	0.39%	0.106%
83	17.792	2513	2517	2521	rVB	251161	347715	0.66%	0.179%
84	18.068	2558	2564	2580	rVB2	695782	1321969	2.53%	0.682%
85	18.368	2610	2615	2624	rVB	453801	609842	1.17%	0.314%
86	18.768	2679	2683	2690	rBV5	93285	197164	0.38%	0.102%
87	18.998	2719	2722	2729	rVB	406304	542854	1.04%	0.280%
88	19.227	2757	2761	2769	rVB	225240	348930	0.67%	0.180%
89	19.339	2777	2780	2790	rBV5	159921	289526	0.55%	0.149%
90	19.480	2801	2804	2810	rVB	257715	318357	0.61%	0.164%
91	19.556	2811	2817	2831	rVB	5116652	7517257	14.37%	3.876%
92	20.104	2907	2910	2915	rVB	259742	293306	0.56%	0.151%
93	20.598	2991	2994	2998	rBV	242969	249595	0.48%	0.129%
94	21.074	3070	3075	3084	rBV2	809920	1342930	2.57%	0.692%
95	21.398	3124	3130	3136	rBV	2745184	4095548	7.83%	2.112%
96	21.592	3160	3163	3175	rVB	242507	380104	0.73%	0.196%
97	22.156	3255	3259	3269	rVB	486068	902132	1.72%	0.465%
98	22.509	3314	3319	3325	rVB	772334	1208269	2.31%	0.623%
99	24.191	3596	3605	3623	rVB	2955412	7357745	14.07%	3.794%
100	24.397	3631	3640	3657	rVB	1757542	4663583	8.92%	2.405%

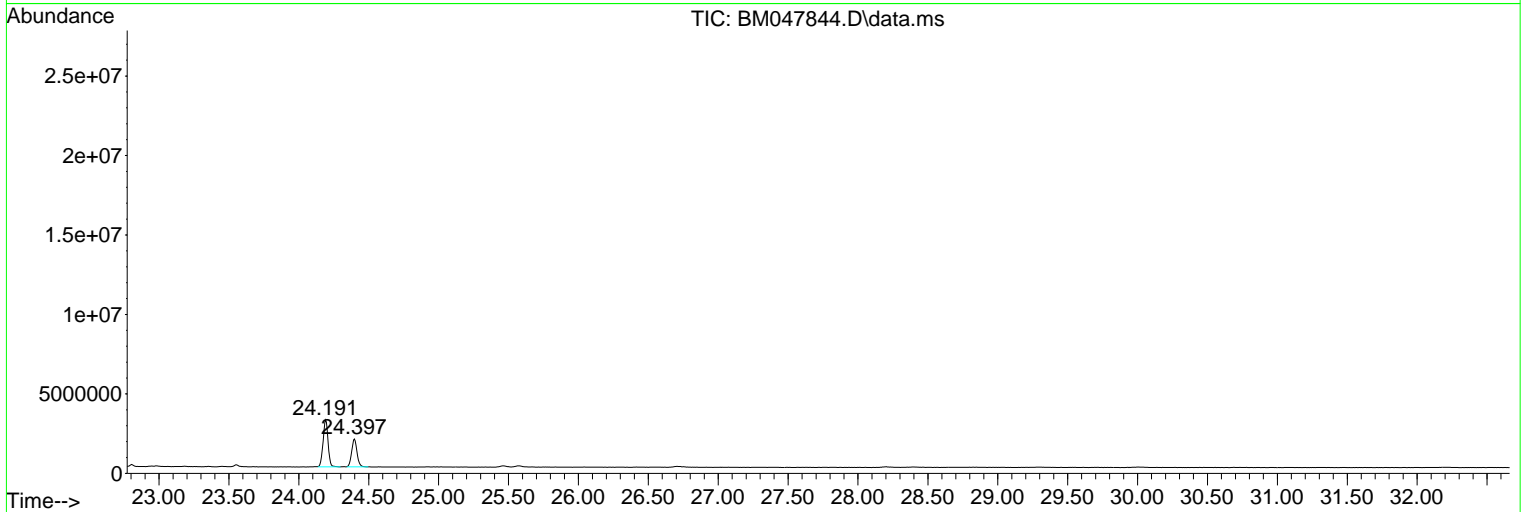
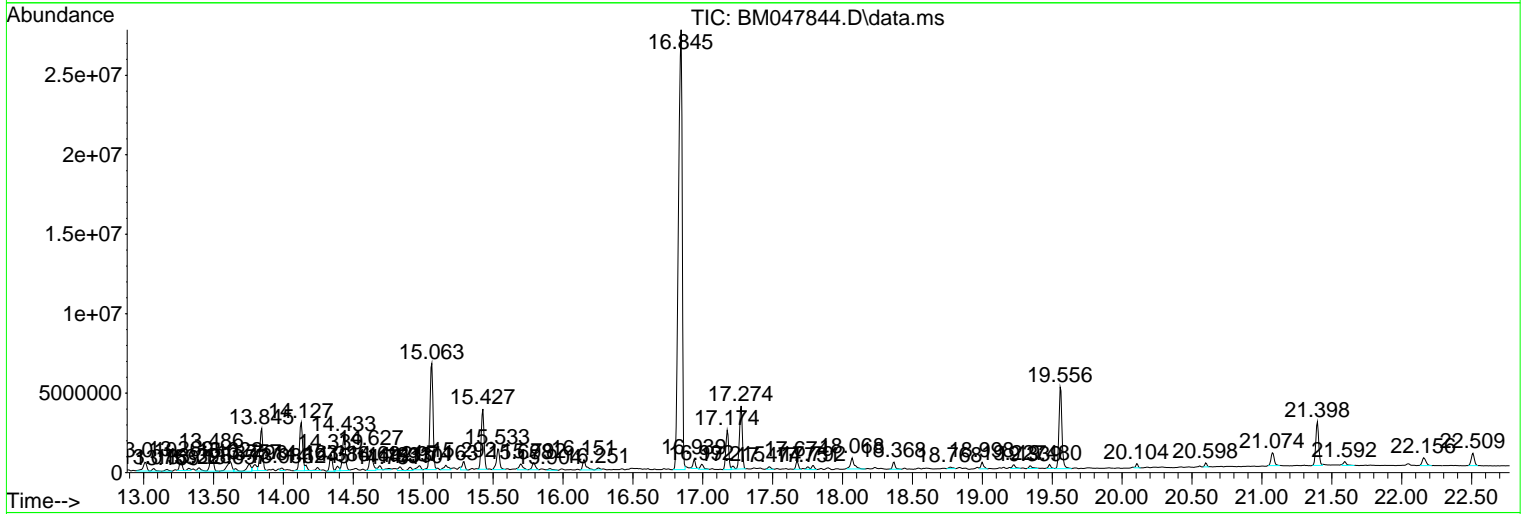
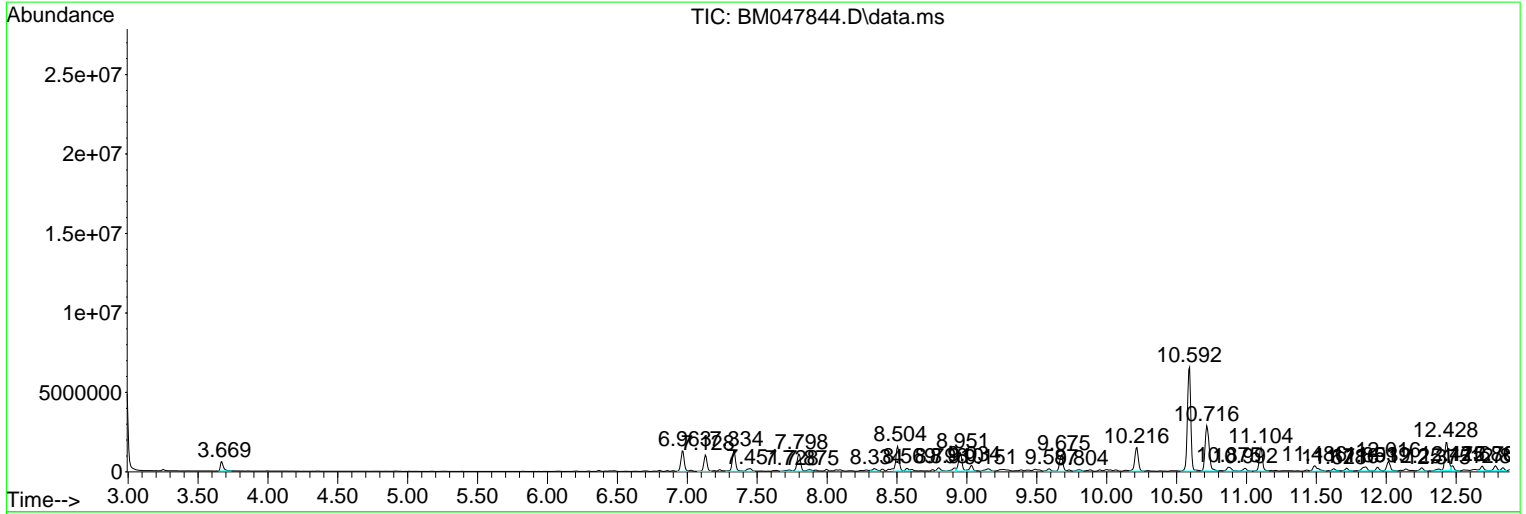
Sum of corrected areas: 193938111

Data Path : Z:\svoasrv\HPCHEM1\BNA\_M\Data\BM100324\  
 Data File : BM047844.D  
 Acq On : 04 Oct 2024 15:39  
 Operator : RC/JU  
 Sample : P4017-11ME  
 Misc :  
 ALS Vial : 44 Sample Multiplier: 1

**Instrument :**  
 BNA\_M  
**ClientSampleId :**  
 DDC86ME

Quant Method : Z:\svoasrv\HPCHEM1\BNA\_M\Methods\SFAM-EPA-BM092724.MA.M  
 Quant Title : SVOA CALIBRATION

TIC Library : C:\Database\NI ST20.L  
 TIC Integration Parameters: LSCINT.P



Data Path : Z:\svoasrv\HPCHEM1\BNA\_M\Data\BM100324\  
 Data File : BM047844.D  
 Acq On : 04 Oct 2024 15:39  
 Operator : RC/JU  
 Sample : P4017-11ME  
 Misc :  
 ALS Vial : 44 Sample Multiplier: 1

Instrument :  
 BNA\_M  
 ClientSampleId :  
 DDC86ME

Quant Method : Z:\svoasrv\HPCHEM1\BNA\_M\Methods\SFAM-EPA-BM092724.MA.M  
 Quant Title : SVOA CALIBRATION

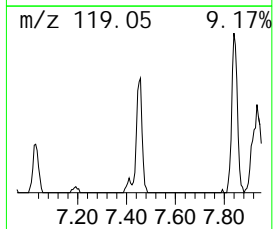
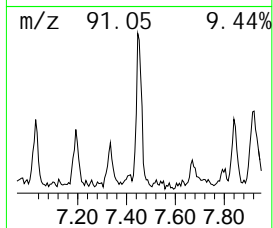
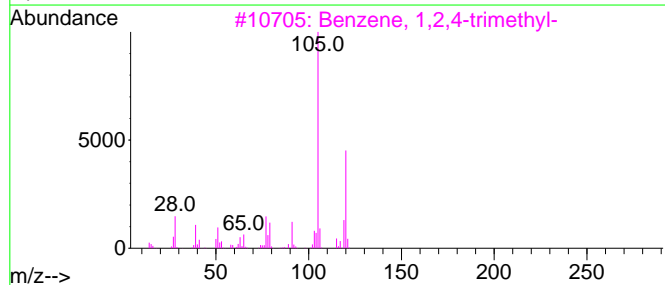
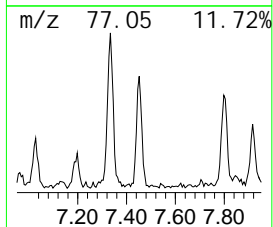
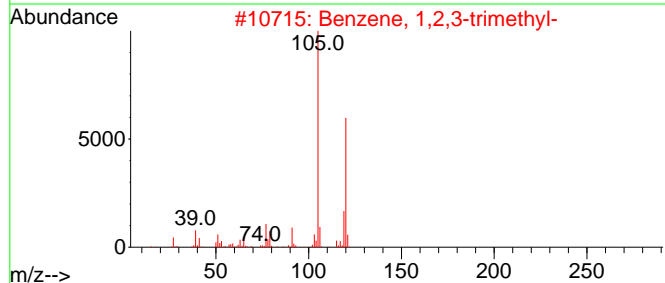
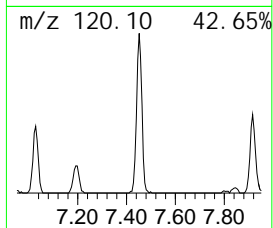
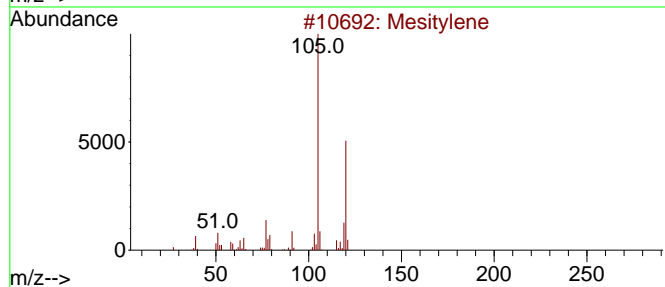
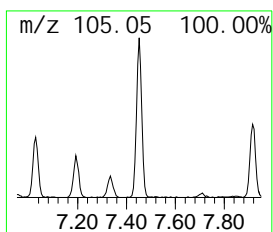
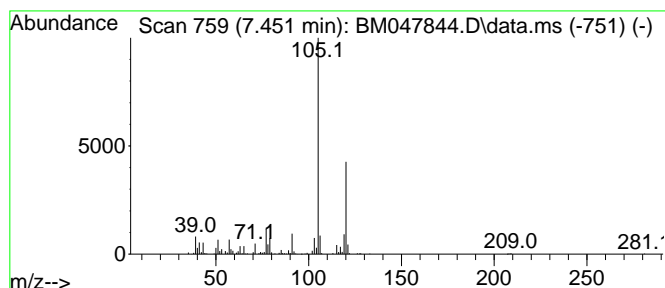
TIC Library : C:\Database\NIST20.L  
 TIC Integration Parameters: LSCINT.P

\*\*\*\*\*  
 Peak Number 1 Mesitylene Concentration Rank 17

R. T.	EstConc	Area	Relative to ISTD	R. T.
7.451	4.03 ng/ul	385767	1,4-Dichlorobenzene-d4	7.798

Hit#	of 5	Tentative ID	MW	Mol Form	CAS#	Qual
1		Mesitylene	120	C9H12	000108-67-8	97
2		Benzene, 1,2,3-trimethyl-	120	C9H12	000526-73-8	95
3		Benzene, 1,2,4-trimethyl-	120	C9H12	000095-63-6	94
4		Benzene, 1,2,3-trimethyl-	120	C9H12	000526-73-8	94
5		Benzene, 1,2,4-trimethyl-	120	C9H12	000095-63-6	91



Data Path : Z:\svoasrv\HPCHEM1\BNA\_M\Data\BM100324\  
 Data File : BM047844.D  
 Acq On : 04 Oct 2024 15:39  
 Operator : RC/JU  
 Sample : P4017-11ME  
 Misc :  
 ALS Vial : 44 Sample Multiplier: 1

**Instrument :**  
 BNA\_M  
**ClientSampleId :**  
 DDC86ME

Quant Method : Z:\svoasrv\HPCHEM1\BNA\_M\Methods\SFAM-EPA-BM092724.MA.M  
 Quant Title : SVOA CALIBRATION

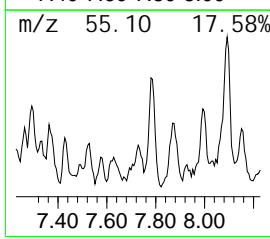
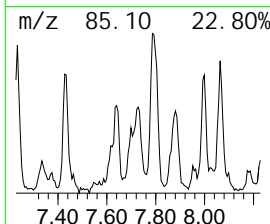
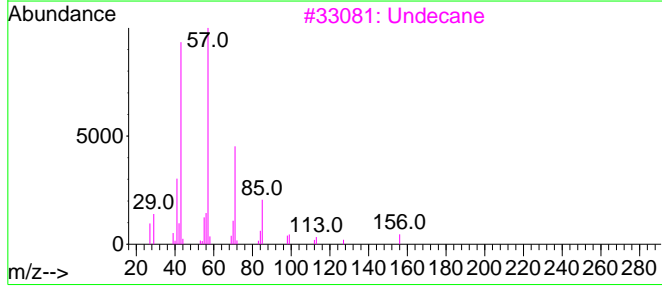
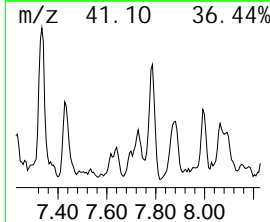
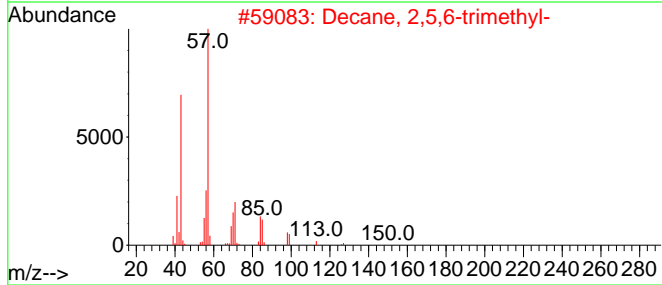
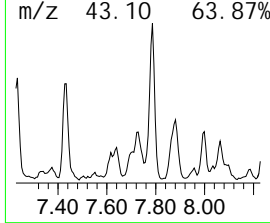
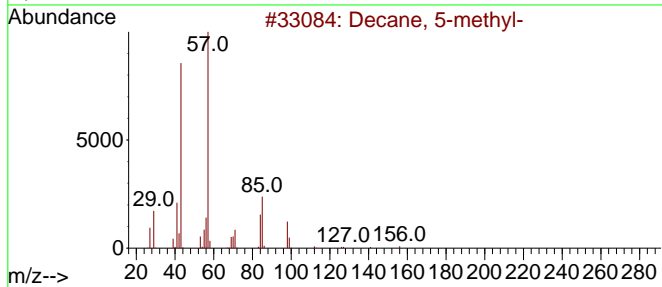
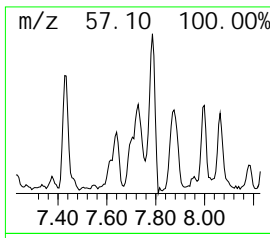
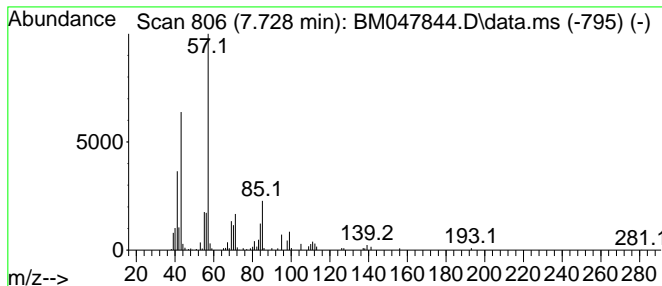
TIC Library : C:\Database\NI ST20.L  
 TIC Integration Parameters: LSCINT.P

\*\*\*\*\*  
 Peak Number 2 (DEL) Alkane: Straight-Chai... Concentration Rank 32

R. T.	EstConc	Area	Relative to ISTD	R. T.
7.728	2.24 ng/ul	214956	1, 4-Di chl orobenzene-d4	7.798

Hit#	of	5	Tentative ID	MW	Mol Form	CAS#	Qual
1			Decane, 5-methyl-	156	C11H24	013151-35-4	53
2			Decane, 2,5,6-trimethyl-	184	C13H28	062108-23-0	53
3			Undecane	156	C11H24	001120-21-4	53
4			Decane, 2,3,5,8-tetramethyl-	198	C14H30	192823-15-7	50
5			Tri decane	184	C13H28	000629-50-5	50



Data Path : Z:\svoasrv\HPCHEM1\BNA\_M\Data\BM100324\  
 Data File : BM047844.D  
 Acq On : 04 Oct 2024 15:39  
 Operator : RC/JU  
 Sample : P4017-11ME  
 Misc :  
 ALS Vial : 44 Sample Multiplier: 1

Instrument :  
 BNA\_M  
 ClientSampleId :  
 DDC86ME

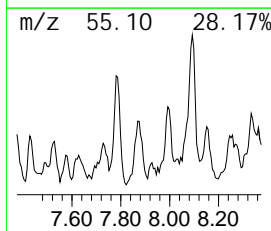
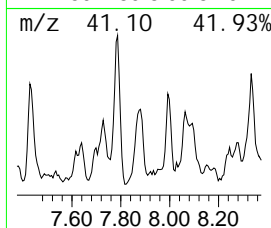
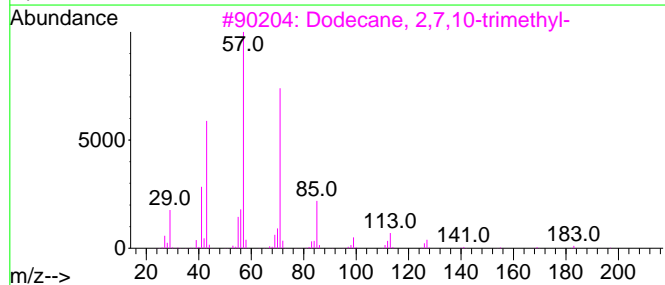
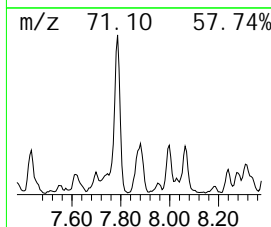
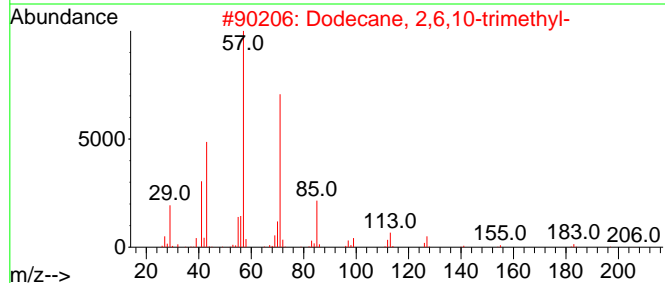
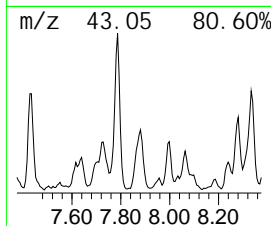
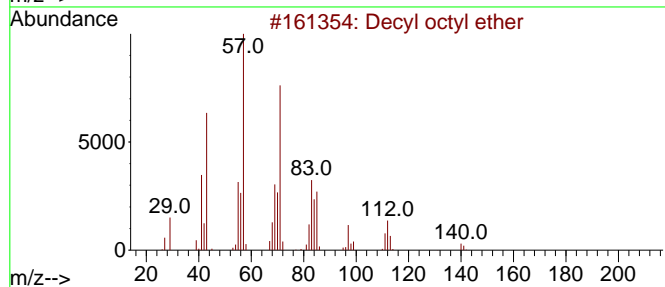
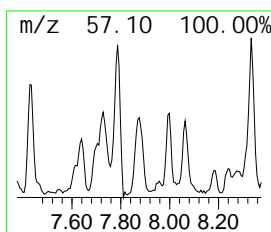
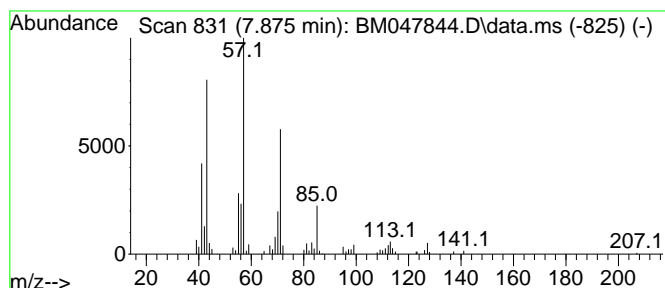
Quant Method : Z:\svoasrv\HPCHEM1\BNA\_M\Methods\SFAM-EPA-BM092724.MA.M  
 Quant Title : SVOA CALIBRATION

TIC Library : C:\Database\NI ST20.L  
 TIC Integration Parameters: LSCINT.P

\*\*\*\*\*  
 Peak Number 3 Decyl octyl ether Concentration Rank 35

R. T.	EstConc	Area	Relative to ISTD	R. T.
7.875	2.14 ng/ul	205026	1,4-Dichlorobenzene-d4	7.798

Hit#	of	Tentative ID	MW	Mol Form	CAS#	Qual
1	5	Decyl octyl ether	270	C18H38O	1000406-38-3	78
2		Dodecane, 2,6,10-trimethyl-	212	C15H32	003891-98-3	72
3		Dodecane, 2,7,10-trimethyl-	212	C15H32	074645-98-0	72
4		Undecane, 3,8-dimethyl-	184	C13H28	017301-30-3	72
5		Nonane, 3-methyl-5-propyl-	184	C13H28	031081-18-2	59



Data Path : Z:\svoasrv\HPCHEM1\BNA\_M\Data\BM100324\  
 Data File : BM047844.D  
 Acq On : 04 Oct 2024 15:39  
 Operator : RC/JU  
 Sample : P4017-11ME  
 Misc :  
 ALS Vial : 44 Sample Multiplier: 1

Instrument :  
 BNA\_M  
 ClientSampleId :  
 DDC86ME

Quant Method : Z:\svoasrv\HPCHEM1\BNA\_M\Methods\SFAM-EPA-BM092724.MA.M  
 Quant Title : SVOA CALIBRATION

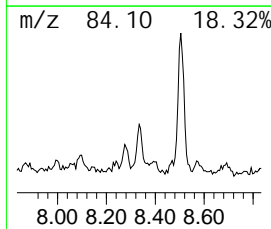
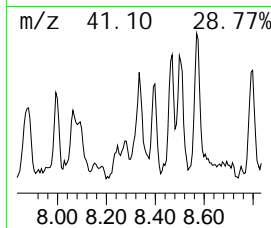
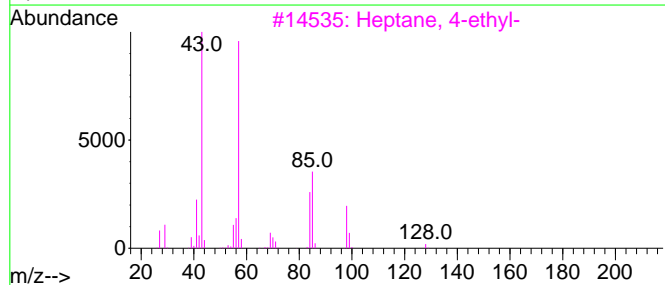
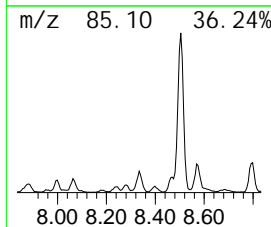
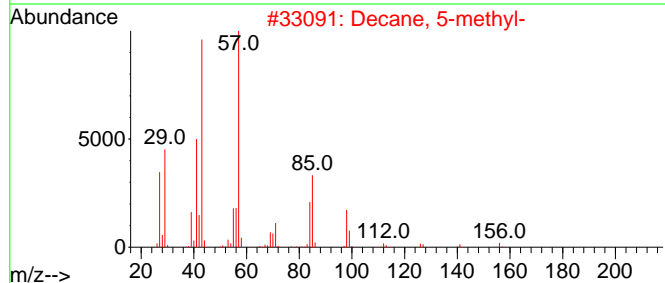
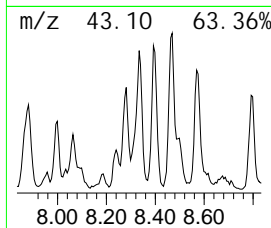
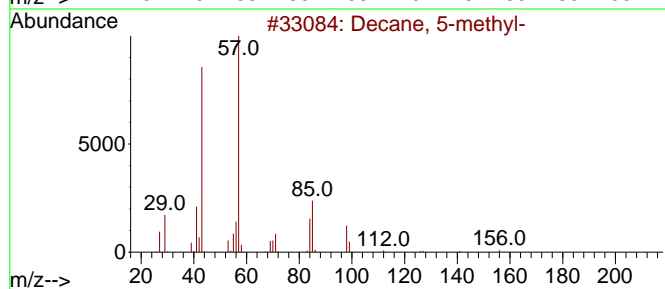
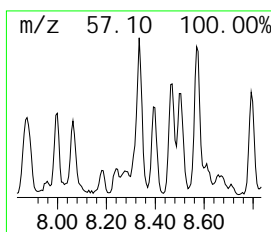
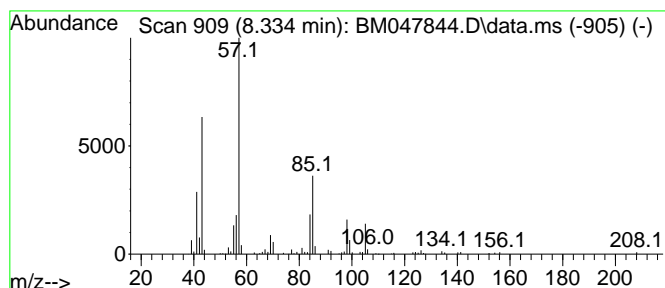
TIC Library : C:\Database\NIST20.L  
 TIC Integration Parameters: LSCINT.P

\*\*\*\*\*  
 Peak Number 4 (DEL) Alkane: Straight-Chai... Concentration Rank 24

R. T.	EstConc	Area	Relative to ISTD	R. T.
8.334	3.45 ng/ul	330817	1,4-Dichlorobenzene-d4	7.798

Hit#	of 5	Tentative ID	MW	Mol Form	CAS#	Qual
1		Decane, 5-methyl-	156	C11H24	013151-35-4	83
2		Decane, 5-methyl-	156	C11H24	013151-35-4	59
3		Heptane, 4-ethyl-	128	C9H20	002216-32-2	59
4		Heptane, 4-ethyl-	128	C9H20	002216-32-2	53
5		4,4-Dimethyl octane	142	C10H22	015869-95-1	50





Data Path : Z:\svoasrv\HPCHEM1\BNA\_M\Data\BM100324\  
 Data File : BM047844.D  
 Acq On : 04 Oct 2024 15:39  
 Operator : RC/JU  
 Sample : P4017-11ME  
 Misc :  
 ALS Vial : 44 Sample Multiplier: 1

Instrument :  
 BNA\_M  
 ClientSampleId :  
 DDC86ME

Quant Method : Z:\svoasrv\HPCHEM1\BNA\_M\Methods\SFAM-EPA-BM092724.MA.M  
 Quant Title : SVOA CALIBRATION

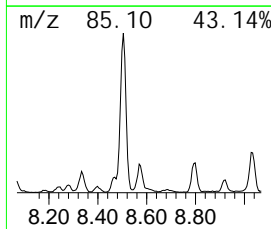
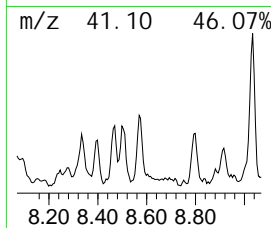
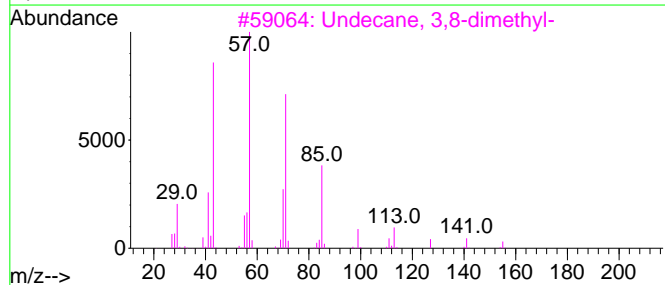
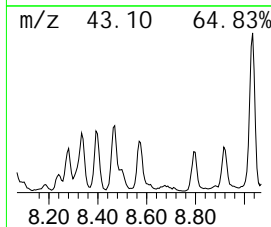
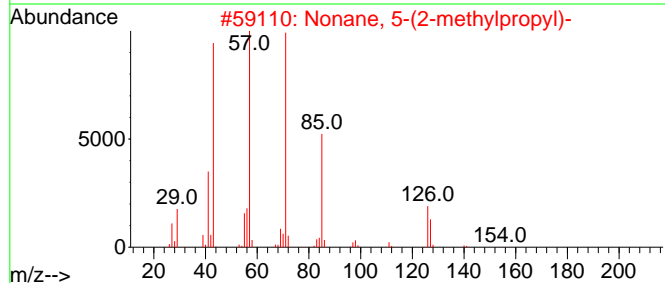
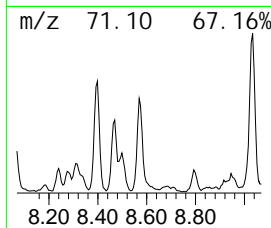
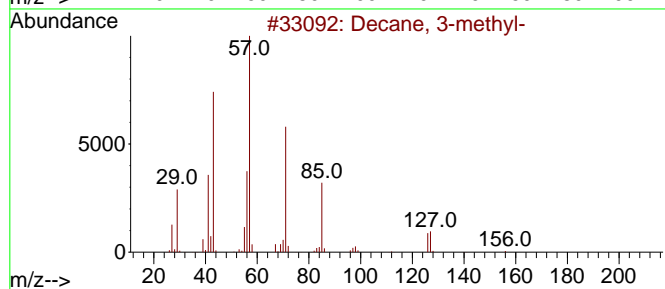
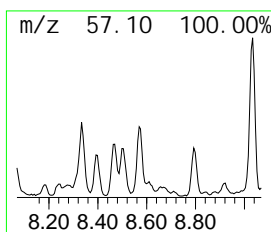
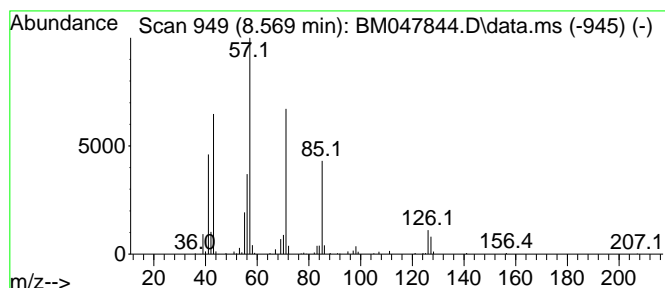
TIC Library : C:\Database\NIST20.L  
 TIC Integration Parameters: LSCINT.P

\*\*\*\*\*  
 Peak Number 5 (DEL) Alkane: Straight-Chai... Concentration Rank 30

R. T.	EstConc	Area	Relative to ISTD	R. T.
8.569	2.78 ng/ul	266342	1,4-Dichlorobenzene-d4	7.798

Hit# of 5	Tentative ID	MW	Mol Form	CAS#	Qual
1	Decane, 3-methyl-	156	C11H24	013151-34-3	87
2	Nonane, 5-(2-methylpropyl)-	184	C13H28	062185-53-9	80
3	Undecane, 3,8-dimethyl-	184	C13H28	017301-30-3	59
4	1-Undecene, 4-methyl-	168	C12H24	074630-39-0	59
5	Nonane, 1-iodo-	254	C9H19I	004282-42-2	53



Data Path : Z:\svoasrv\HPCHEM1\BNA\_M\Data\BM100324\  
 Data File : BM047844.D  
 Acq On : 04 Oct 2024 15:39  
 Operator : RC/JU  
 Sample : P4017-11ME  
 Misc :  
 ALS Vial : 44 Sample Multiplier: 1

Instrument :  
 BNA\_M  
 ClientSampleId :  
 DDC86ME

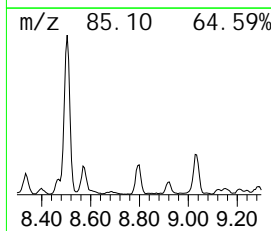
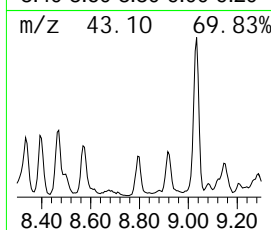
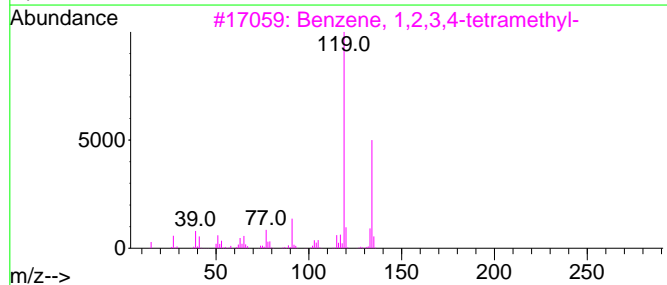
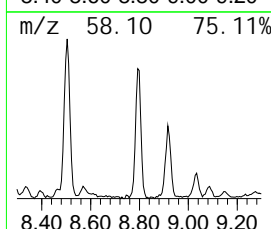
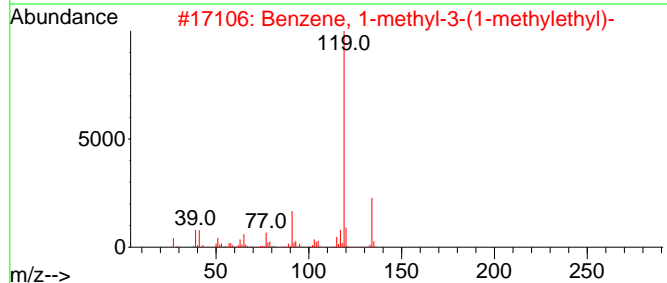
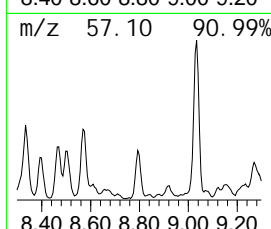
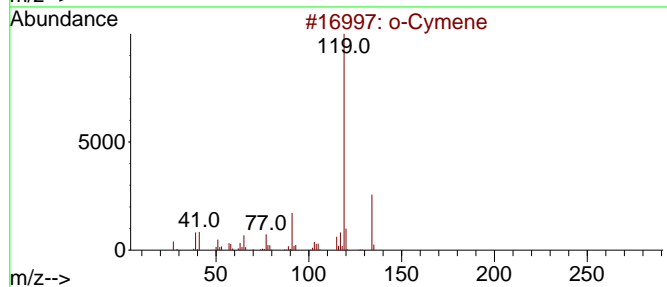
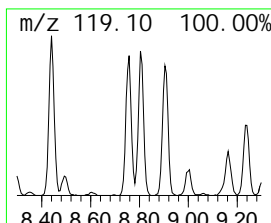
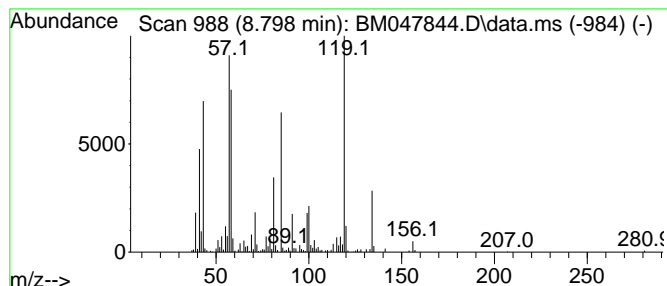
Quant Method : Z:\svoasrv\HPCHEM1\BNA\_M\Methods\SFAM-EPA-BM092724.MA.M  
 Quant Title : SVOA CALIBRATION

TIC Library : C:\Database\NI ST20.L  
 TIC Integration Parameters: LSCINT.P

\*\*\*\*\*  
 Peak Number 6 o-Cymene Concentration Rank 18

R. T.	EstConc	Area	Relative to ISTD	R. T.
8.798	4.02 ng/ul	385089	1,4-Dichlorobenzene-d4	7.798

Hit#	of	5	Tentative ID	MW	Mol Form	CAS#	Qual
1			o-Cymene	134	C10H14	000527-84-4	83
2			Benzene, 1-methyl-3-(1-methylethyl)-	134	C10H14	000535-77-3	42
3			Benzene, 1,2,3,4-tetramethyl-	134	C10H14	000488-23-3	42
4			Benzene, 1-ethyl-2,3-dimethyl-	134	C10H14	000933-98-2	42
5			p-Cymene	134	C10H14	000099-87-6	42



Data Path : Z:\svoasrv\HPCHEM1\BNA\_M\Data\BM100324\  
 Data File : BM047844.D  
 Acq On : 04 Oct 2024 15:39  
 Operator : RC/JU  
 Sample : P4017-11ME  
 Misc :  
 ALS Vial : 44 Sample Multiplier: 1

**Instrument :**  
 BNA\_M  
**ClientSampleId :**  
 DDC86ME

Quant Method : Z:\svoasrv\HPCHEM1\BNA\_M\Methods\SFAM-EPA-BM092724.MA.M  
 Quant Title : SVOA CALIBRATION

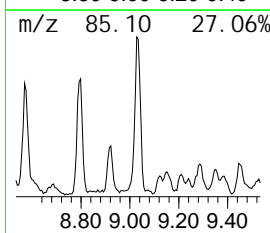
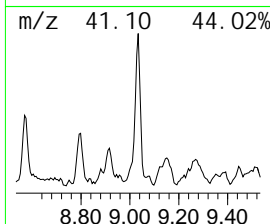
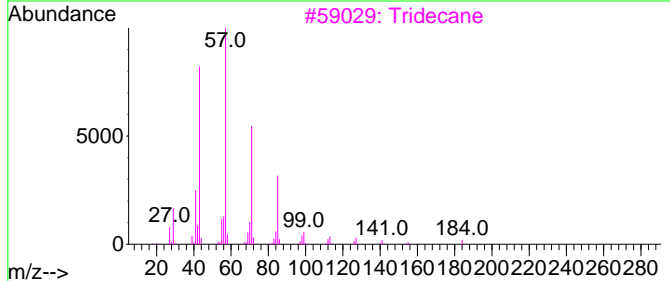
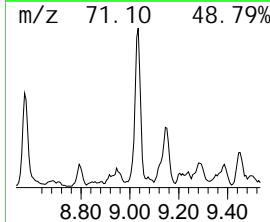
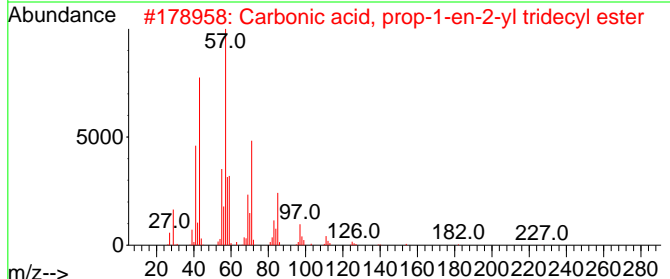
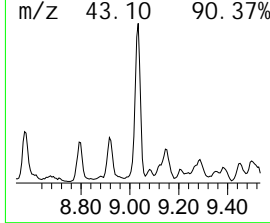
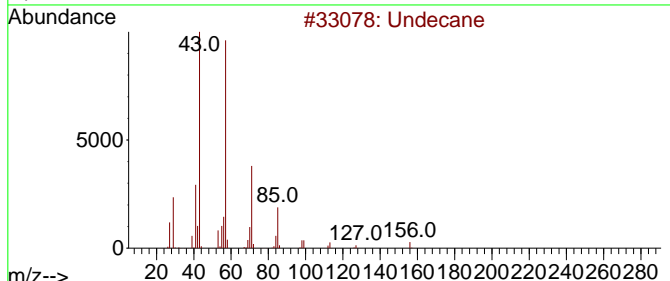
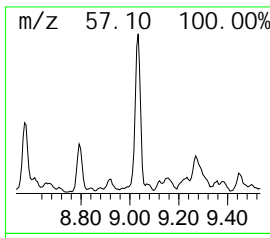
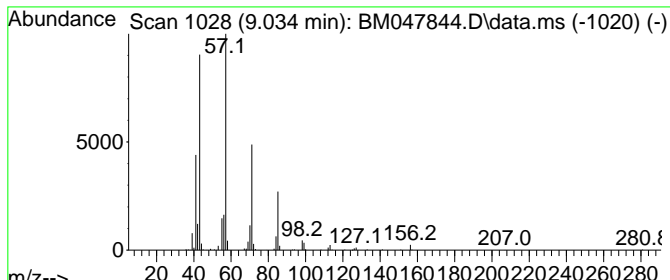
TIC Library : C:\Database\NI ST20.L  
 TIC Integration Parameters: LSCINT.P

\*\*\*\*\*  
 Peak Number 7 (DEL) Alkane: Straight-Chai... Concentration Rank 5

R. T.	EstConc	Area	Relative to ISTD	R. T.
9.034	6.67 ng/ul	638706	1, 4-Di chl orobenzene-d4	7.798

Hit# of 5	Tentative ID	MW	Mol Form	CAS#	Qual
1	Undecane	156	C11H24	001120-21-4	93
2	Carbonic acid, prop-1-en-2-yl tr...	284	C17H32O3	1000382-90-8	90
3	Tridecane	184	C13H28	000629-50-5	83
4	Pentadecane	212	C15H32	000629-62-9	83
5	Decane, 2-methyl-	156	C11H24	006975-98-0	80



Data Path : Z:\svoasrv\HPCHEM1\BNA\_M\Data\BM100324\  
 Data File : BM047844.D  
 Acq On : 04 Oct 2024 15:39  
 Operator : RC/JU  
 Sample : P4017-11ME  
 Misc :  
 ALS Vial : 44 Sample Multiplier: 1

Instrument :  
 BNA\_M  
 ClientSampleId :  
 DDC86ME

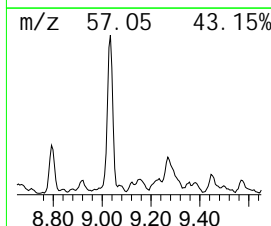
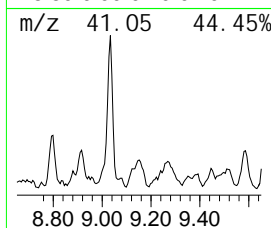
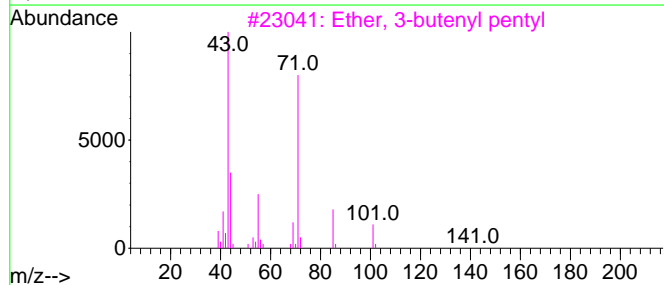
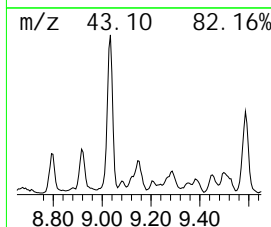
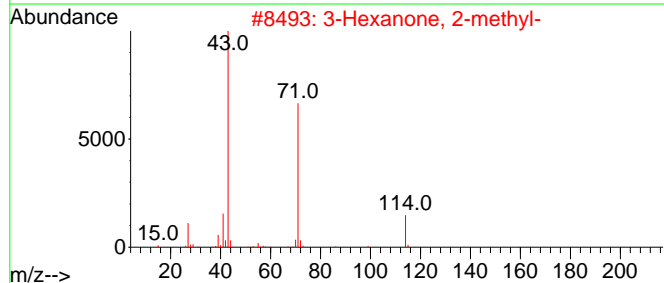
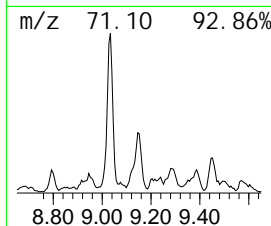
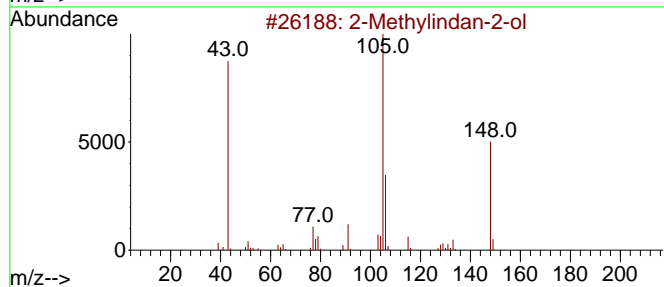
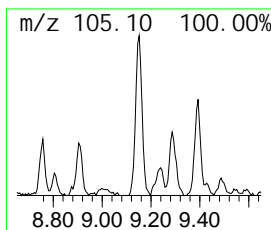
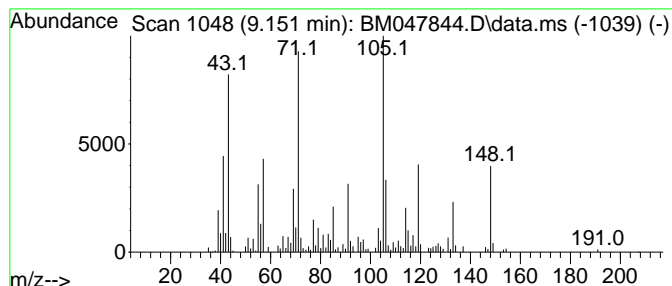
Quant Method : Z:\svoasrv\HPCHEM1\BNA\_M\Methods\SFAM-EPA-BM092724.MA.M  
 Quant Title : SVOA CALIBRATION

TIC Library : C:\Database\NIST20.L  
 TIC Integration Parameters: LSCINT.P

\*\*\*\*\*  
 Peak Number 8 unknown-01 Concentration Rank 19

R. T.	EstConc	Area	Relative to ISTD	R. T.
9.151	4.00 ng/ul	383481	1, 4-Di chl orobenzene-d4	7.798

Hit#	of 5	Tentative ID	MW	Mol Form	CAS#	Qual
1		2-Methylindan-2-ol	148	C10H12O	033223-84-6	38
2		3-Hexanone, 2-methyl -	114	C7H14O	007379-12-6	25
3		Ether, 3-butenyl pentyl	142	C9H18O	034061-78-4	22
4		3-Hexanone, 2-methyl -	114	C7H14O	007379-12-6	22
5		3-Pentanone, 2, 4-di methyl -	114	C7H14O	000565-80-0	22



Data Path : Z:\svoasrv\HPCHEM1\BNA\_M\Data\BM100324\  
 Data File : BM047844.D  
 Acq On : 04 Oct 2024 15:39  
 Operator : RC/JU  
 Sample : P4017-11ME  
 Misc :  
 ALS Vial : 44 Sample Multiplier: 1

Instrument :  
 BNA\_M  
 ClientSampleId :  
 DDC86ME

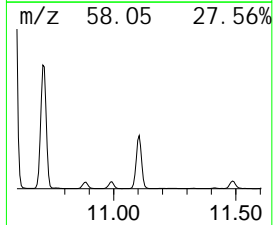
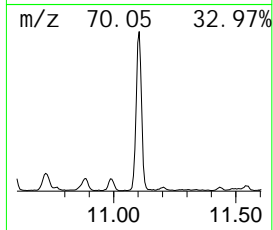
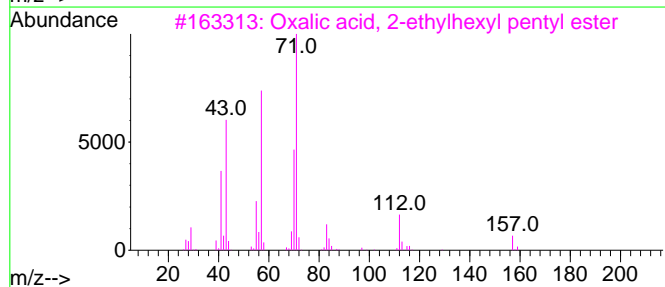
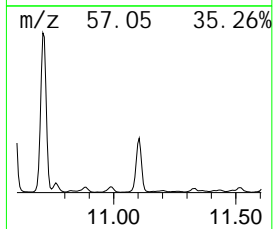
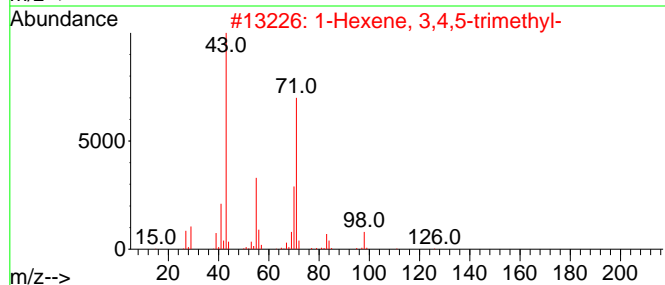
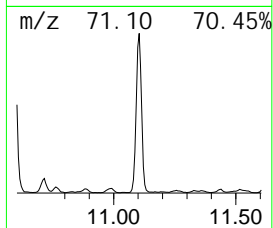
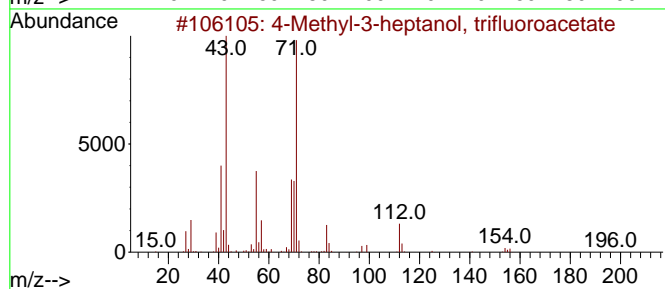
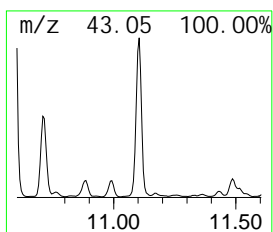
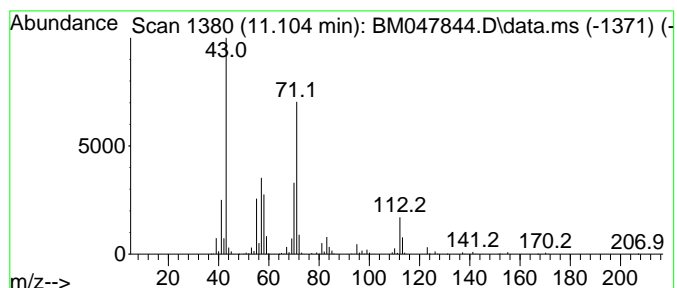
Quant Method : Z:\svoasrv\HPCHEM1\BNA\_M\Methods\SFAM-EPA-BM092724.MA.M  
 Quant Title : SVOA CALIBRATION

TIC Library : C:\Database\NI ST20.L  
 TIC Integration Parameters: LSCINT.P

\*\*\*\*\*  
 Peak Number 9 4-Methyl-3-heptanol, trifluoro... Concentration Rank 15

R. T.	EstConc	Area	Relative to ISTD	R. T.
11.104	4.31 ng/ul	2336430	Naphthalene-d8	10.592

Hit#	of	5	Tentative ID	MW	Mol Form	CAS#	Qual
1			4-Methyl-3-heptanol, trifluoroac...	226	C10H17F3O2	1000365-51-8	50
2			1-Hexene, 3,4,5-trimethyl-	126	C9H18	056728-10-0	47
3			Oxalic acid, 2-ethylhexyl pentyl...	272	C15H28O4	1000309-38-7	47
4			Pentane, 2,3,4-trimethyl-	114	C8H18	000565-75-3	47
5			Octane, 3-ethyl-	142	C10H22	005881-17-4	40



Data Path : Z:\svoasrv\HPCHEM1\BNA\_M\Data\BM100324\  
 Data File : BM047844.D  
 Acq On : 04 Oct 2024 15:39  
 Operator : RC/JU  
 Sample : P4017-11ME  
 Misc :  
 ALS Vial : 44 Sample Multiplier: 1

Instrument :  
 BNA\_M  
 ClientSampleId :  
 DDC86ME

Quant Method : Z:\svoasrv\HPCHEM1\BNA\_M\Methods\SFAM-EPA-BM092724.MA.M  
 Quant Title : SVOA CALIBRATION

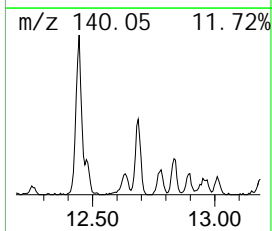
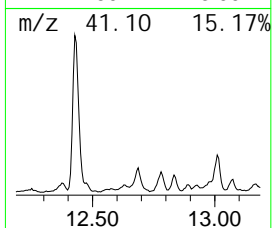
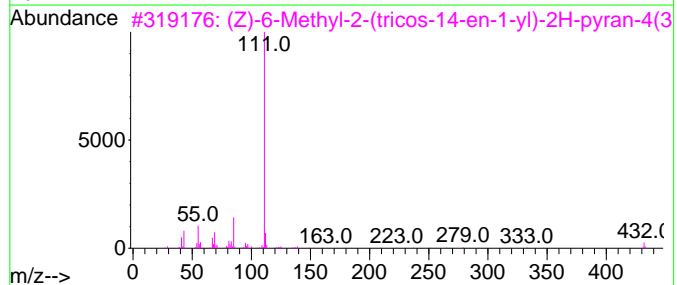
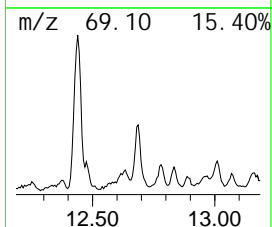
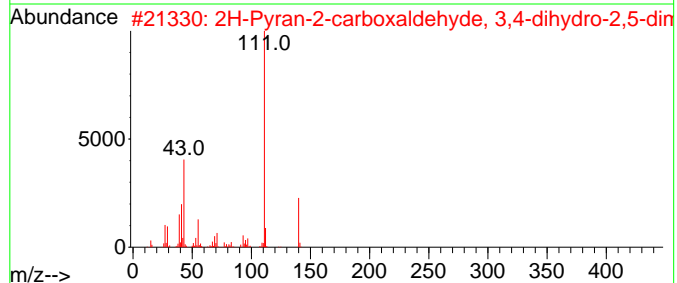
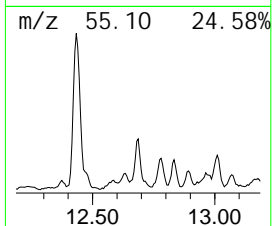
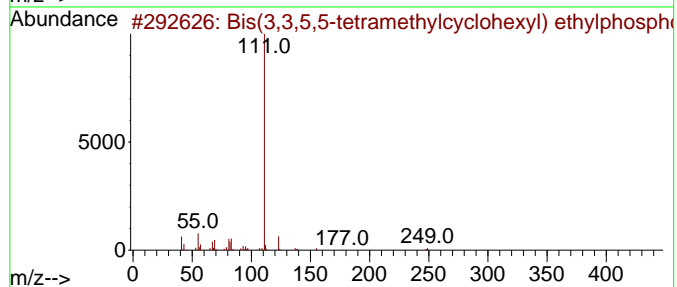
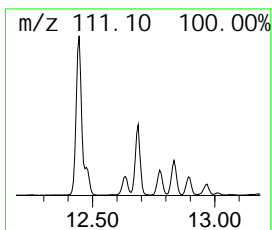
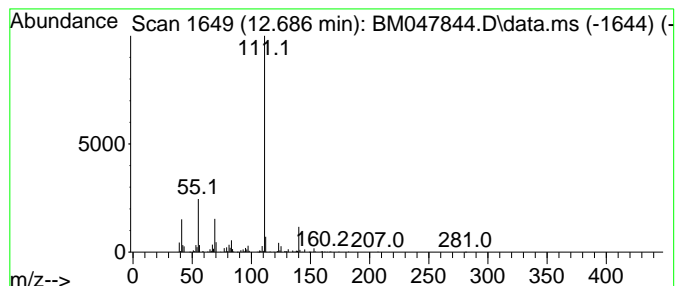
TIC Library : C:\Database\NIST20.L  
 TIC Integration Parameters: LSCINT.P

\*\*\*\*\*  
 Peak Number 10 Bis(3,3,5,5-tetramethyl cycl... Concentration Rank 27

R. T.	EstConc	Area	Relative to ISTD	R. T.
12.686	3.09 ng/ul	499251	Acenaphthene-d10	14.433

Hit#	of	5	Tentative ID	MW	Mol Form	CAS#	Qual
1			Bis(3,3,5,5-tetramethyl cycl hexy...)	386	C22H43O3P	1000510-34-2	64
2			2H-Pyran-2-carboxaldehyde, 3,4-d...	140	C8H12O2	001920-21-4	64
3			(Z)-6-Methyl-2-(tricos-14-en-1-y...	432	C29H52O2	243118-20-9	53
4			(Z)-6-Methyl-2-(nonadec-10-en-1-...	376	C25H44O2	243118-18-5	50
5			2-(Butylidene-2-one)tetrahydrofuran	140	C8H12O2	343270-50-8	50



Data Path : Z:\svoasrv\HPCHEM1\BNA\_M\Data\BM100324\  
 Data File : BM047844.D  
 Acq On : 04 Oct 2024 15:39  
 Operator : RC/JU  
 Sample : P4017-11ME  
 Misc :  
 ALS Vial : 44 Sample Multiplier: 1

Instrument :  
 BNA\_M  
 ClientSampleId :  
 DDC86ME

Quant Method : Z:\svoasrv\HPCHEM1\BNA\_M\Methods\SFAM-EPA-BM092724.MA.M  
 Quant Title : SVOA CALIBRATION

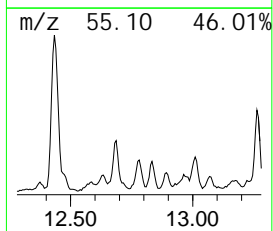
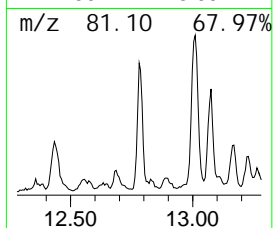
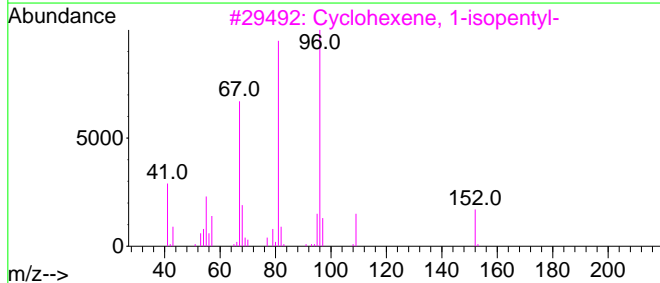
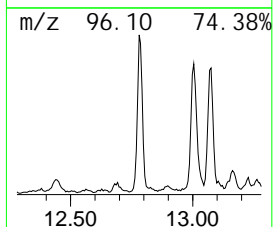
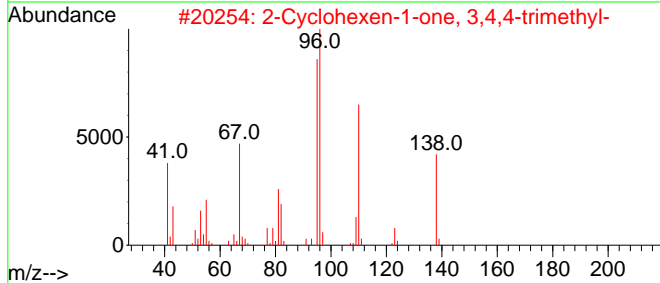
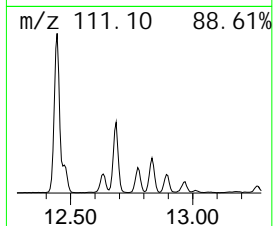
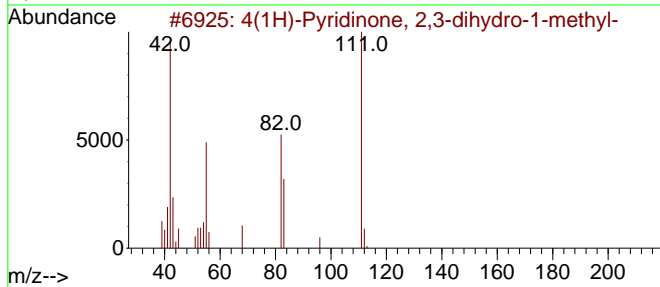
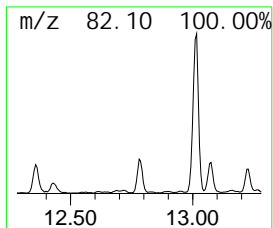
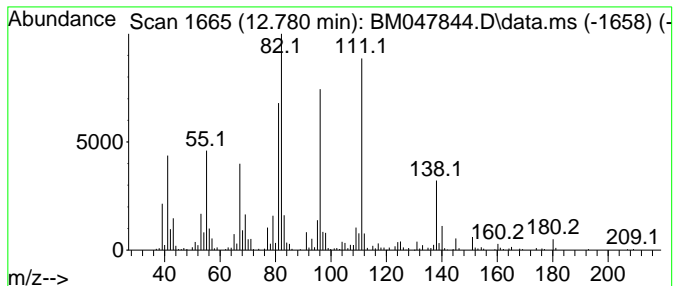
TIC Library : C:\Database\NI ST20.L  
 TIC Integration Parameters: LSCINT.P

\*\*\*\*\*  
 Peak Number 11 unknown-02 Concentration Rank 25

R. T.	EstConc	Area	Relative to ISTD	R. T.
12.781	3.21 ng/ul	518737	Acenaphthene-d10	14.433

Hit#	of	5	Tentative ID	MW	Mol Form	CAS#	Qual
1	4(1H)-Pyridi none, 2, 3-di hydro-1-...	111	C6H9NO	035488-00-7	38		
2	2-Cycl ohexen-1-one, 3, 4, 4-tri met...	138	C9H14O	017299-41-1	38		
3	Cycl ohexene, 1-i sopentyl -	152	C11H20	003983-04-8	27		
4	3, 4-Di methyl -3-pyrrol in-2-one	111	C6H9NO	004030-22-2	20		
5	Cycl ohexanone, 2-methyl ene-5-(1-...	152	C10H16O	015297-07-1	18		



Data Path : Z:\svoasrv\HPCHEM1\BNA\_M\Data\BM100324\  
 Data File : BM047844.D  
 Acq On : 04 Oct 2024 15:39  
 Operator : RC/JU  
 Sample : P4017-11ME  
 Misc :  
 ALS Vial : 44 Sample Multiplier: 1

**Instrument :**  
 BNA\_M  
**ClientSampleId :**  
 DDC86ME

Quant Method : Z:\svoasrv\HPCHEM1\BNA\_M\Methods\SFAM-EPA-BM092724.MA.M  
 Quant Title : SVOA CALIBRATION

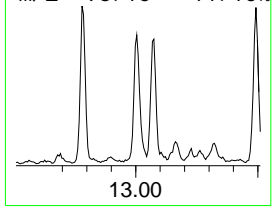
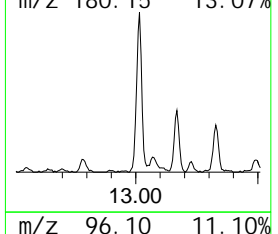
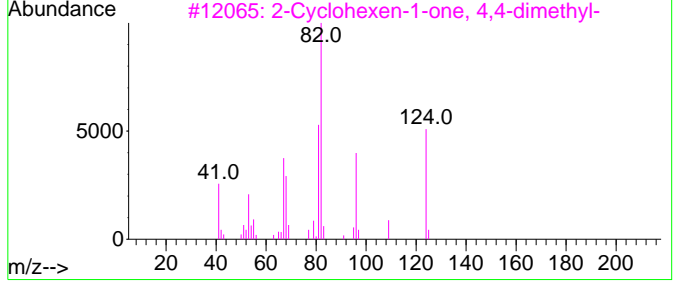
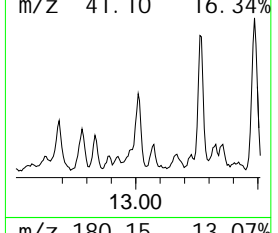
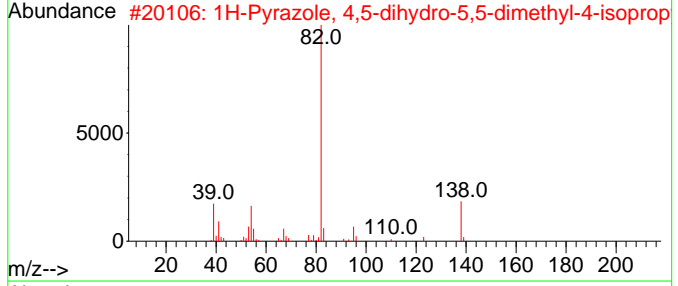
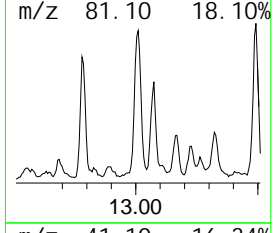
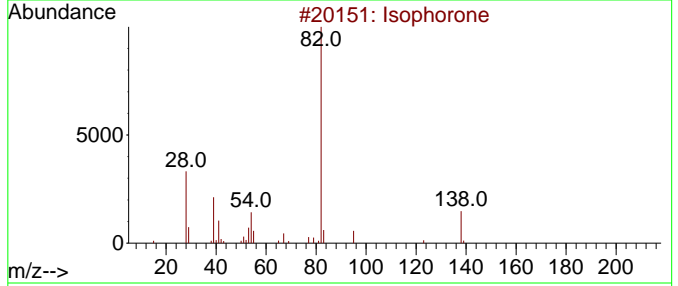
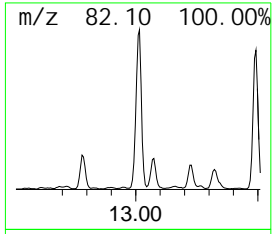
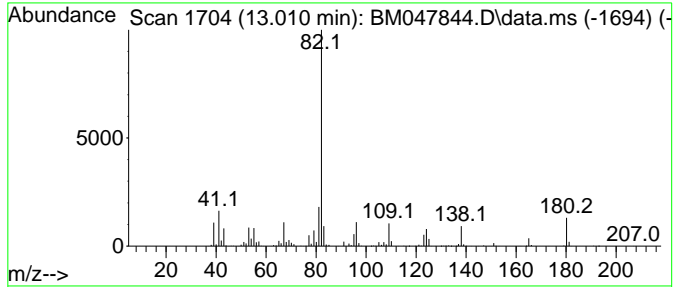
TIC Library : C:\Database\NIST20.L  
 TIC Integration Parameters: LSCINT.P

\*\*\*\*\*  
 Peak Number 12 1H-Pyrazole, 4,5-dihydro-5,... Concentration Rank 7

R. T.	EstConc	Area	Relative to ISTD	R. T.
13.010	6.54 ng/ul	1055090	Acenaphthene-d10	14.433

Hit#	of	Tentative ID	MW	Mol Form	CAS#	Qual
1	5	Isophorone	138	C9H14O	000078-59-1	58
2		1H-Pyrazole, 4,5-dihydro-5,5-dimethyl-4-isopropyl-	138	C8H14N2	106251-09-6	53
3		2-Cyclohexen-1-one, 4,4-dimethyl-	124	C8H12O	001073-13-8	53
4		6-Azabicyclo[3.2.1]octane, 6-methyl-	125	C8H15N	024173-54-4	52
5		cis-Hexenyl octyne carbonate	236	C15H24O2	068480-29-5	50





Data Path : Z:\svoasrv\HPCHEM1\BNA\_M\Data\BM100324\  
 Data File : BM047844.D  
 Acq On : 04 Oct 2024 15:39  
 Operator : RC/JU  
 Sample : P4017-11ME  
 Misc :  
 ALS Vial : 44 Sample Multiplier: 1

**Instrument :**  
 BNA\_M  
**ClientSampleId :**  
 DDC86ME

Quant Method : Z:\svoasrv\HPCHEM1\BNA\_M\Methods\SFAM-EPA-BM092724.MA.M  
 Quant Title : SVOA CALIBRATION

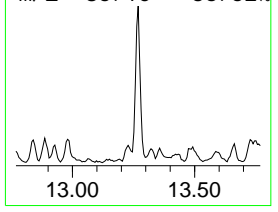
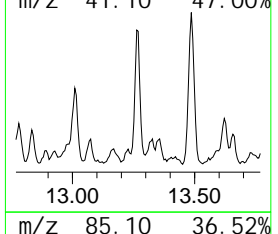
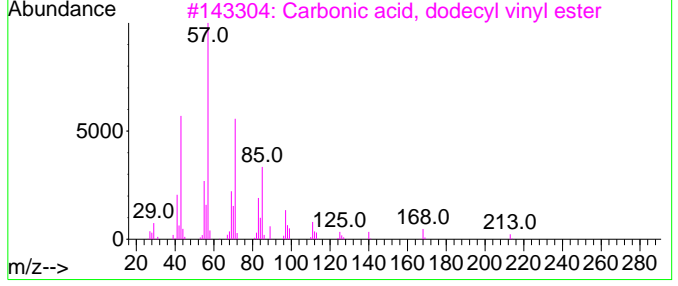
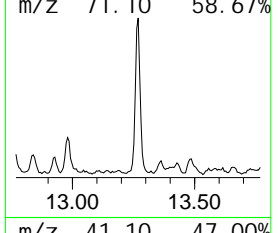
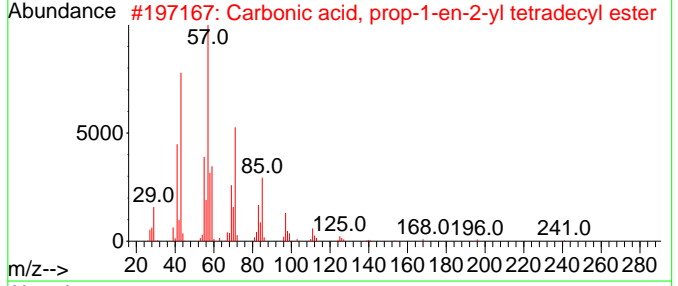
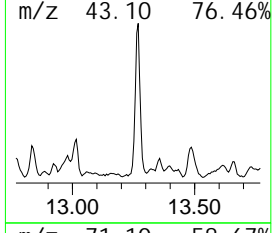
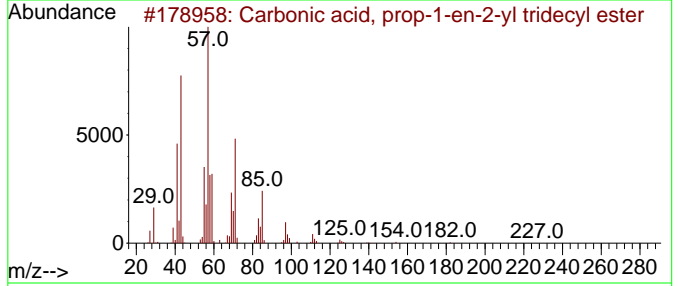
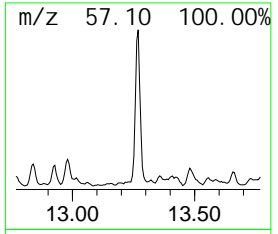
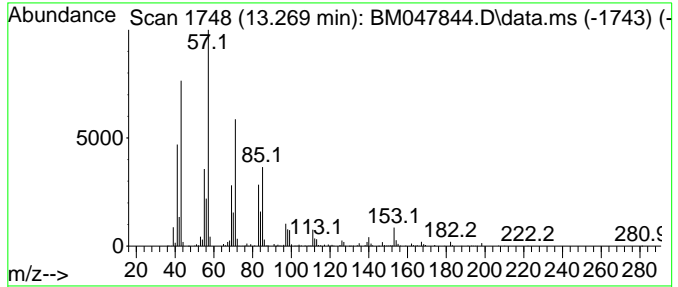
TIC Library : C:\Database\NI ST20.L  
 TIC Integration Parameters: LSCINT.P

\*\*\*\*\*  
 Peak Number 13 Carbonic acid, prop-1-en-2-... Concentration Rank 11

R. T.	EstConc	Area	Relative to ISTD	R. T.
13.269	5.34 ng/ul	862555	Acenaphthene-d10	14.433

Hit#	of	5	Tentative ID	MW	Mol Form	CAS#	Qual
1			Carbonic acid, prop-1-en-2-yl tr...	284	C17H32O3	1000382-90-8	80
2			Carbonic acid, prop-1-en-2-yl te...	298	C18H34O3	1000382-90-9	72
3			Carbonic acid, dodecyl vinyl ester	256	C15H28O3	1000382-54-8	72
4			Carbonic acid, decyl prop-1-en-2...	242	C14H26O3	1000382-90-5	64
5			Nonadecane	268	C19H40	000629-92-5	64



Data Path : Z:\svoasrv\HPCHEM1\BNA\_M\Data\BM100324\  
 Data File : BM047844.D  
 Acq On : 04 Oct 2024 15:39  
 Operator : RC/JU  
 Sample : P4017-11ME  
 Misc :  
 ALS Vial : 44 Sample Multiplier: 1

Instrument :  
 BNA\_M  
 ClientSampleId :  
 DDC86ME

Quant Method : Z:\svoasrv\HPCHEM1\BNA\_M\Methods\SFAM-EPA-BM092724.MA.M  
 Quant Title : SVOA CALIBRATION

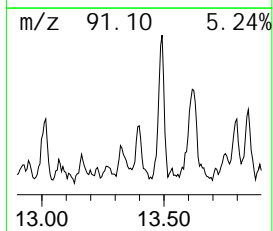
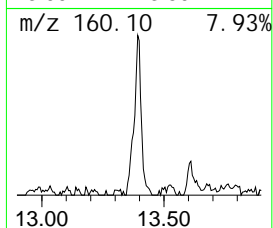
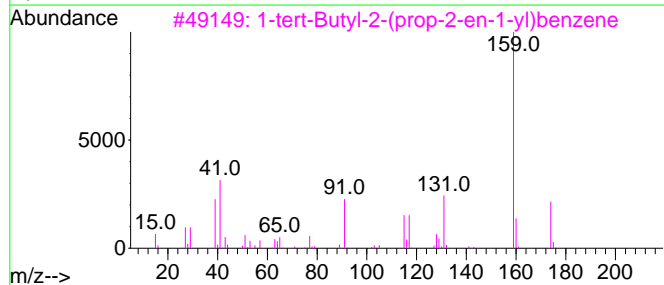
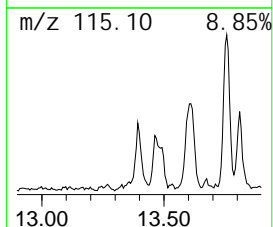
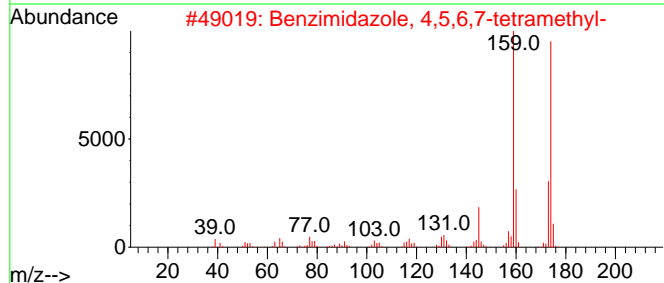
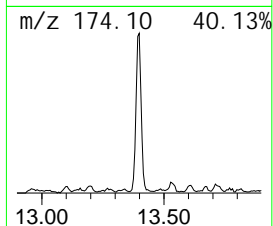
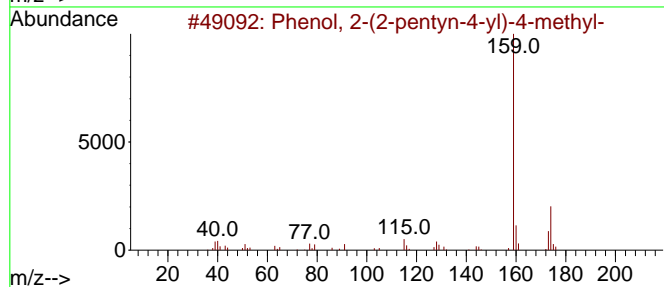
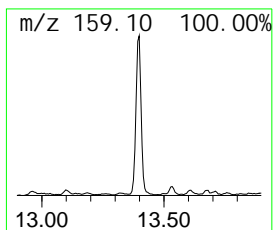
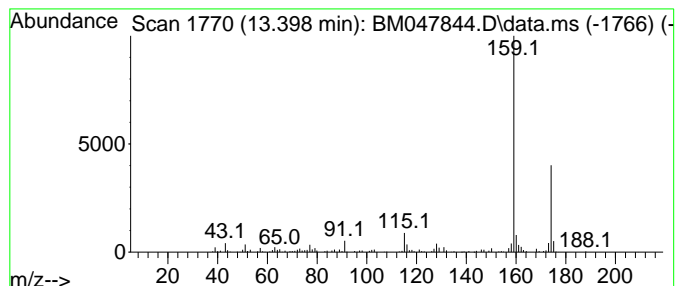
TIC Library : C:\Database\NIST20.L  
 TIC Integration Parameters: LSCINT.P

\*\*\*\*\*  
 Peak Number 14 Phenol, 2-(2-pentyn-4-yl)-4... Concentration Rank 36

R. T.	EstConc	Area	Relative to ISTD	R. T.
13.398	2.11 ng/ul	340177	Acenaphthene-d10	14.433

Hit#	of	5	Tentative ID	MW	Mol Form	CAS#	Qual
1			Phenol, 2-(2-pentyn-4-yl)-4-methyl-	174	C12H14O	1000258-83-7	83
2			Benzimidazole, 4,5,6,7-tetramethyl-	174	C11H14N2	106148-67-8	72
3			1-tert-Butyl-2-(prop-2-en-1-yl)benzene	174	C13H18	1000486-84-0	64
4			Benzene, 1,2,3,4-tetramethyl-4-(...)	174	C13H18	061142-76-5	56
5			1H-Inden-1-one, 2,3-dihydro-3,3,...	174	C12H14O	054484-71-8	56



Data Path : Z:\svoasrv\HPCHEM1\BNA\_M\Data\BM100324\  
 Data File : BM047844.D  
 Acq On : 04 Oct 2024 15:39  
 Operator : RC/JU  
 Sample : P4017-11ME  
 Misc :  
 ALS Vial : 44 Sample Multiplier: 1

**Instrument :**  
 BNA\_M  
**ClientSampleId :**  
 DDC86ME

Quant Method : Z:\svoasrv\HPCHEM1\BNA\_M\Methods\SFAM-EPA-BM092724.MA.M  
 Quant Title : SVOA CALIBRATION

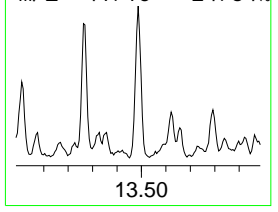
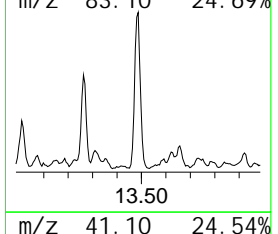
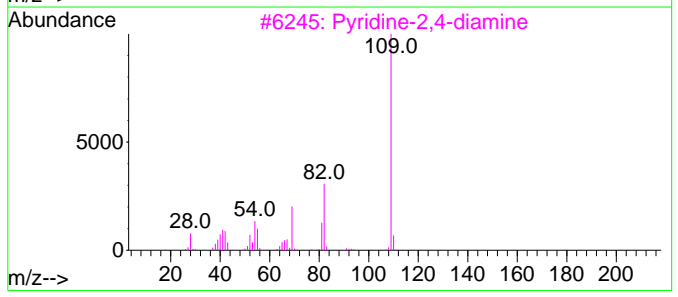
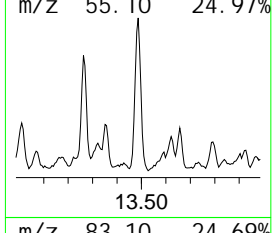
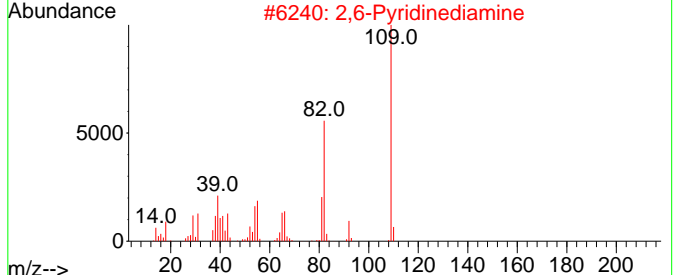
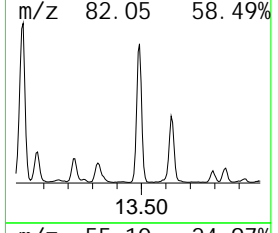
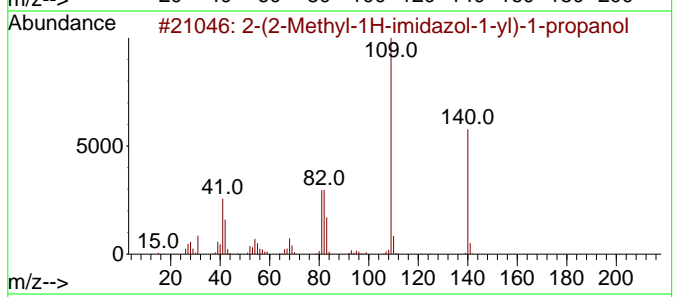
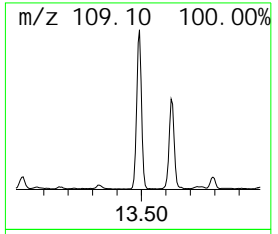
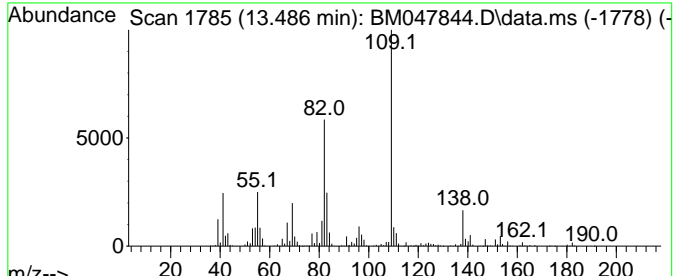
TIC Library : C:\Database\NI ST20.L  
 TIC Integration Parameters: LSCINT.P

\*\*\*\*\*  
 Peak Number 15 2-(2-Methyl-1H-imidazol-1-yl)-... Concentration Rank 1

R. T.	EstConc	Area	Relative to ISTD	R. T.
13.486	12.21 ng/ul	1970960	Acenaphthene-d10	14.433

Hit#	of	5	Tentative ID	MW	Mol Form	CAS#	Qual
1	2-(2-Methyl-1H-imidazol-1-yl)-1-...	140	C7H12N2O	097801-05-3	64		
2	2,6-Pyridinediamine	109	C5H7N3	000141-86-6	50		
3	Pyridine-2,4-diamine	109	C5H7N3	000461-88-1	43		
4	2,3-Pyridinediamine	109	C5H7N3	000452-58-4	43		
5	(4-Fluorophenyl) methanol, tert...	182	C11H15FO	1000374-64-1	43		



Data Path : Z:\svoasrv\HPCHEM1\BNA\_M\Data\BM100324\  
 Data File : BM047844.D  
 Acq On : 04 Oct 2024 15:39  
 Operator : RC/JU  
 Sample : P4017-11ME  
 Misc :  
 ALS Vial : 44 Sample Multiplier: 1

Instrument :  
 BNA\_M  
 ClientSampleId :  
 DDC86ME

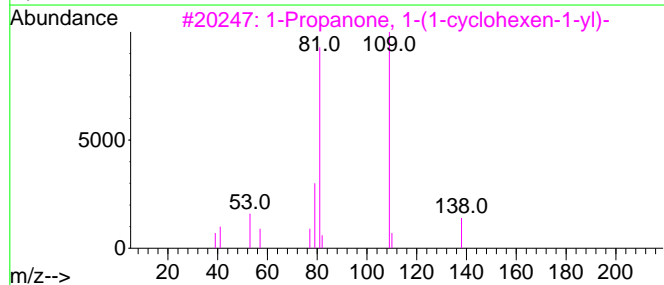
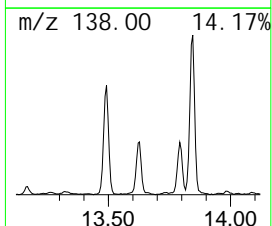
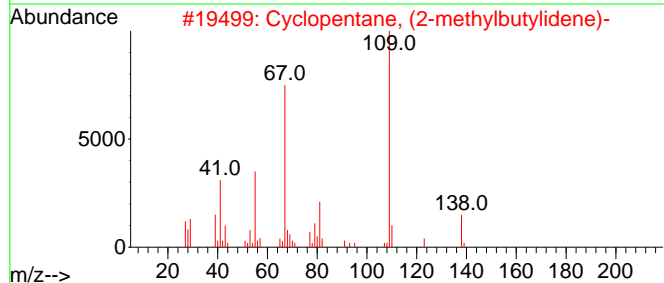
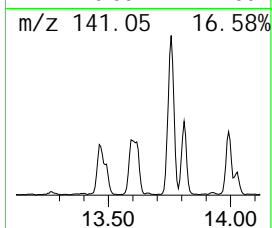
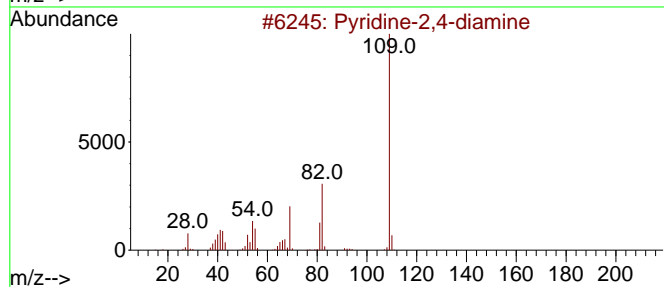
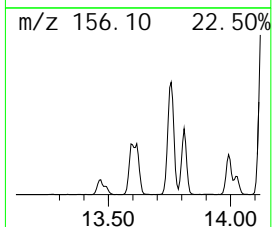
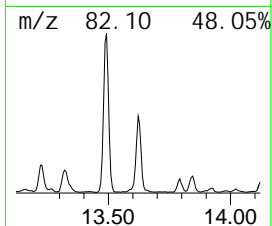
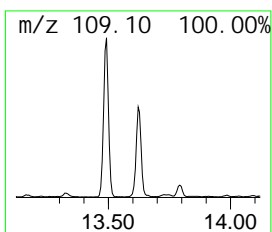
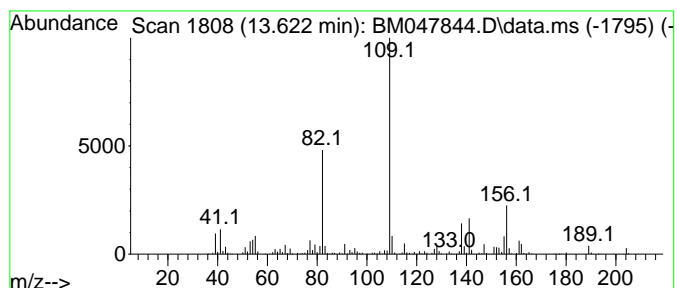
Quant Method : Z:\svoasrv\HPCHEM1\BNA\_M\Methods\SFAM-EPA-BM092724.MA.M  
 Quant Title : SVOA CALIBRATION

TIC Library : C:\Database\NI ST20.L  
 TIC Integration Parameters: LSCINT.P

\*\*\*\*\*  
 Peak Number 16 Pyridine-2,4-diamine Concentration Rank 2

R. T.	EstConc	Area	Relative to ISTD	R. T.
13.622	9.06 ng/ul	1462860	Acenaphthene-d10	14.433

Hit#	of	Tentative ID	MW	Mol Form	CAS#	Qual
1	5	Pyridine-2,4-diamine	109	C5H7N3	000461-88-1	50
2		Cyclopentane, (2-methylbutylidene)-	138	C10H18	053366-54-4	38
3		1-Propanone, 1-(1-cyclohexen-1-yl)-	138	C9H14O	001655-03-4	38
4		2,6-Pyridinediamine	109	C5H7N3	000141-86-6	35
5		2-Pyridinamine, 4-methyl-5-(1-...	151	C8H13N3	1000460-76-8	35



Data Path : Z:\svoasrv\HPCHEM1\BNA\_M\Data\BM100324\  
 Data File : BM047844.D  
 Acq On : 04 Oct 2024 15:39  
 Operator : RC/JU  
 Sample : P4017-11ME  
 Misc :  
 ALS Vial : 44 Sample Multiplier: 1

**Instrument :**  
 BNA\_M  
**ClientSampleId :**  
 DDC86ME

Quant Method : Z:\svoasrv\HPCHEM1\BNA\_M\Methods\SFAM-EPA-BM092724.MA.M  
 Quant Title : SVOA CALIBRATION

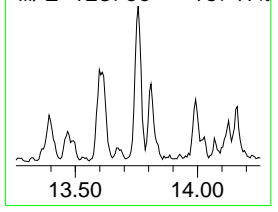
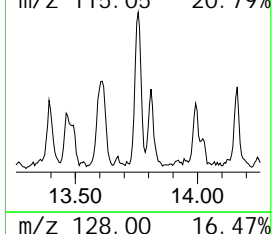
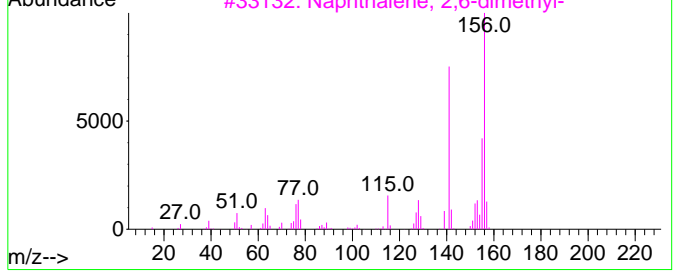
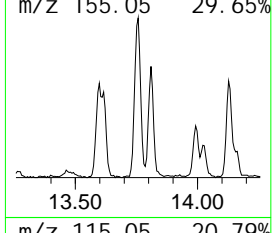
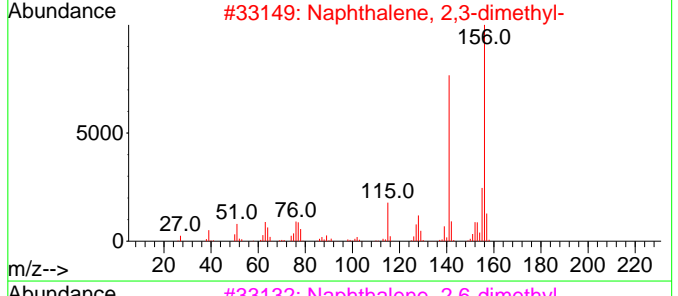
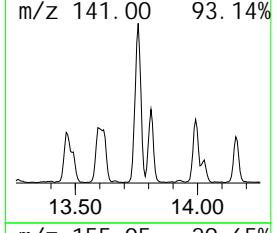
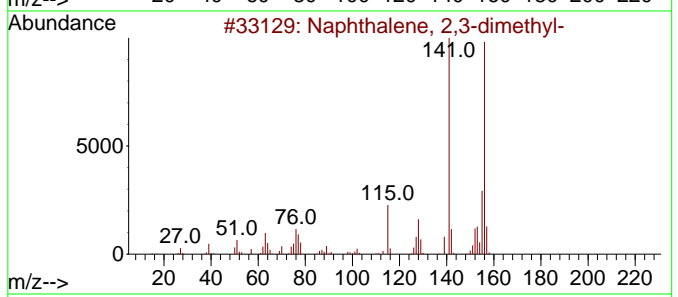
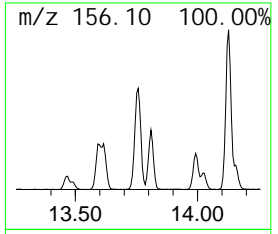
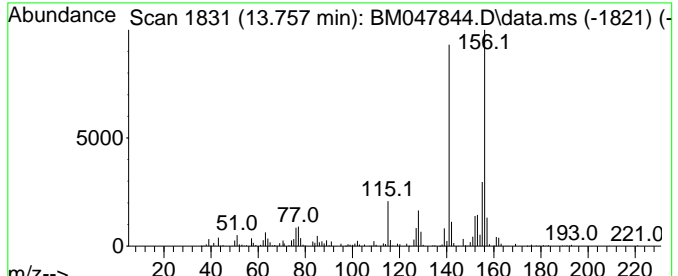
TIC Library : C:\Database\NI ST20.L  
 TIC Integration Parameters: LSCINT.P

\*\*\*\*\*  
 Peak Number 17 Naphthalene, 2,3-dimethyl - Concentration Rank 10

R. T.	EstConc	Area	Relative to ISTD	R. T.
13.757	5.73 ng/ul	923937	Acenaphthene-d10	14.433

Hit#	of	Tentative ID	MW	Mol Form	CAS#	Qual
1	5	Naphthalene, 2,3-dimethyl -	156	C12H12	000581-40-8	98
2		Naphthalene, 2,3-dimethyl -	156	C12H12	000581-40-8	97
3		Naphthalene, 2,6-dimethyl -	156	C12H12	000581-42-0	97
4		Naphthalene, 1,7-dimethyl -	156	C12H12	000575-37-1	97
5		Naphthalene, 2,6-dimethyl -	156	C12H12	000581-42-0	97



Data Path : Z:\svoasrv\HPCHEM1\BNA\_M\Data\BM100324\  
 Data File : BM047844.D  
 Acq On : 04 Oct 2024 15:39  
 Operator : RC/JU  
 Sample : P4017-11ME  
 Misc :  
 ALS Vial : 44 Sample Multiplier: 1

Instrument :  
 BNA\_M  
 ClientSampleId :  
 DDC86ME

Quant Method : Z:\svoasrv\HPCHEM1\BNA\_M\Methods\SFAM-EPA-BM092724.MA.M  
 Quant Title : SVOA CALIBRATION

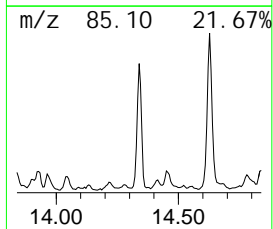
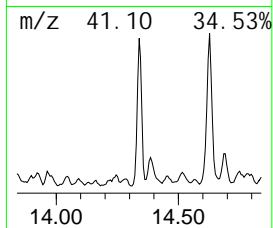
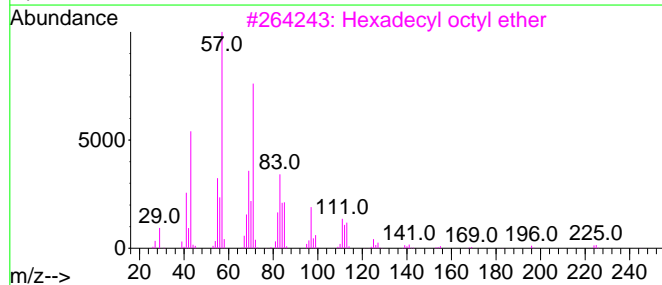
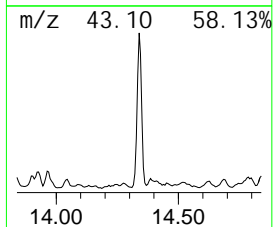
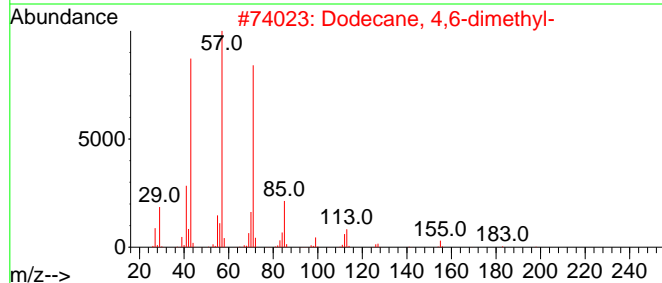
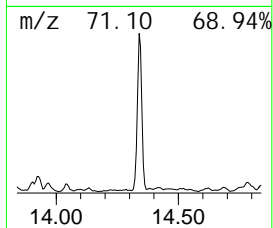
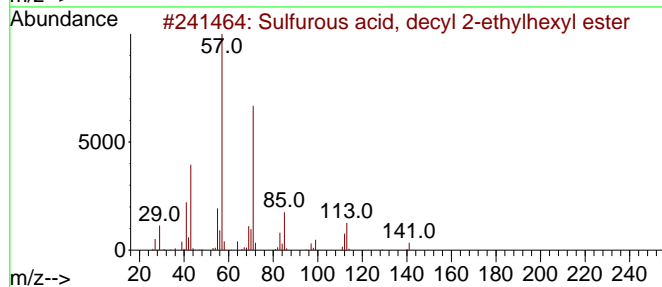
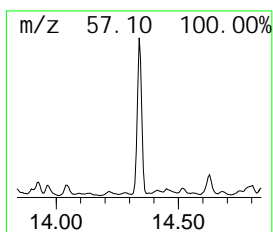
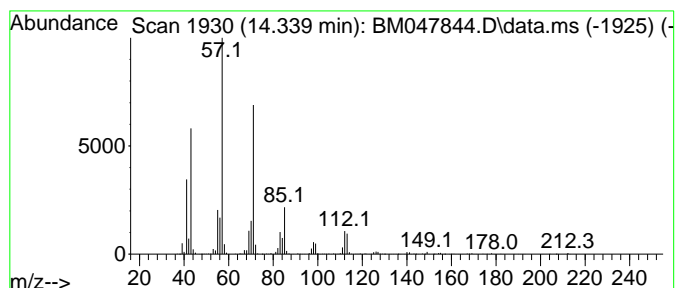
TIC Library : C:\Database\NIST20.L  
 TIC Integration Parameters: LSCINT.P

\*\*\*\*\*  
 Peak Number 18 Sulfurous acid, decyl 2-eth... Concentration Rank 3

R. T.	EstConc	Area	Relative to ISTD	R. T.
14.339	8.75 ng/ul	1411590	Acenaphthene-d10	14.433

Hit#	of	5	Tentative ID	MW	Mol Form	CAS#	Qual
1			Sulfurous acid, decyl 2-ethyl hex...	334	C18H38O3S	1000309-19-3	80
2			Dodecane, 4,6-dimethyl-	198	C14H30	061141-72-8	72
3			Hexadecyl octyl ether	354	C24H50O	1000406-38-6	72
4			Sulfurous acid, 2-ethyl hexyl hep...	432	C25H52O3S	1000309-20-0	72
5			Undecane, 4,6-dimethyl-	184	C13H28	017312-82-2	72



Data Path : Z:\svoasrv\HPCHEM1\BNA\_M\Data\BM100324\  
 Data File : BM047844.D  
 Acq On : 04 Oct 2024 15:39  
 Operator : RC/JU  
 Sample : P4017-11ME  
 Misc :  
 ALS Vial : 44 Sample Multiplier: 1

Instrument :  
 BNA\_M  
 ClientSampleId :  
 DDC86ME

Quant Method : Z:\svoasrv\HPCHEM1\BNA\_M\Methods\SFAM-EPA-BM092724.MA.M  
 Quant Title : SVOA CALIBRATION

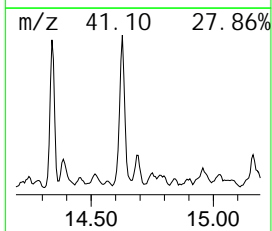
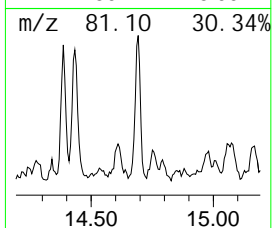
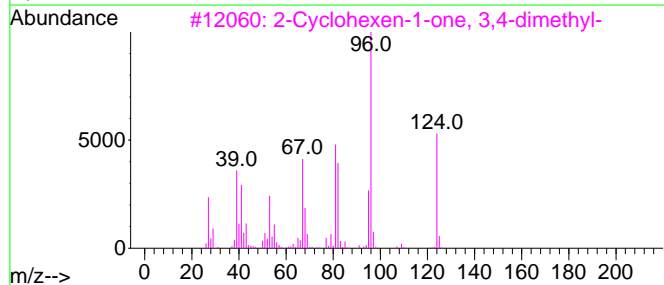
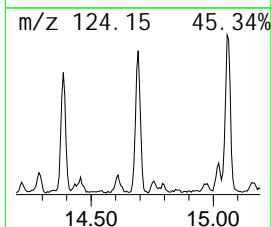
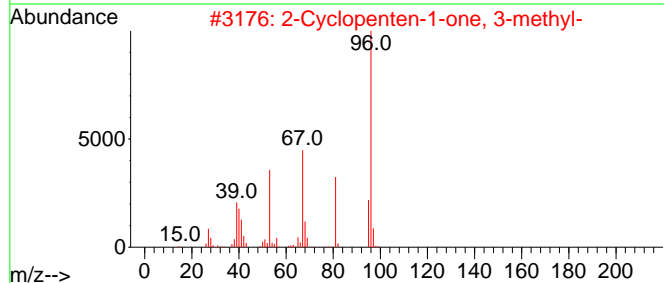
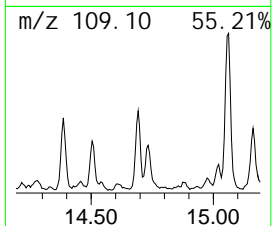
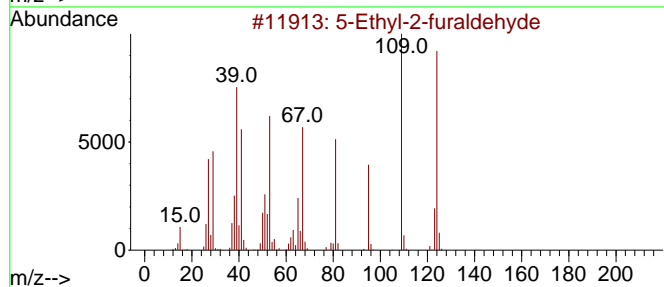
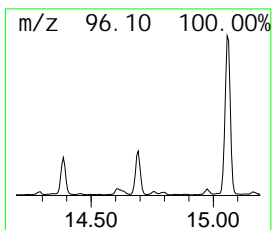
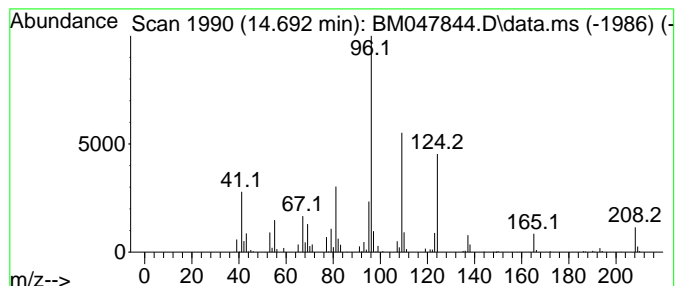
TIC Library : C:\Database\NI ST20.L  
 TIC Integration Parameters: LSCINT.P

\*\*\*\*\*  
 Peak Number 19 unknown-03 Concentration Rank 31

R. T.	EstConc	Area	Relative to ISTD	R. T.
14.692	2.26 ng/ul	365243	Acenaphthene-d10	14.433

Hit#	of	5	Tentative ID	MW	Mol Form	CAS#	Qual
1			5-Ethyl-2-furaldehyde	124	C7H8O2	023074-10-4	35
2			2-Cyclopenten-1-one, 3-methyl-	96	C6H8O	002758-18-1	35
3			2-Cyclohexen-1-one, 3,4-dimethyl-	124	C8H12O	1000197-00-4	32
4			2-Cyclohexen-1-one, 4,4,6-trimethyl-	138	C9H14O	013395-73-8	32
5			12-Heptadecyn-1-ol	252	C17H32O	056554-76-8	32



Data Path : Z:\svoasrv\HPCHEM1\BNA\_M\Data\BM100324\  
 Data File : BM047844.D  
 Acq On : 04 Oct 2024 15:39  
 Operator : RC/JU  
 Sample : P4017-11ME  
 Misc :  
 ALS Vial : 44 Sample Multiplier: 1

Instrument :  
 BNA\_M  
 ClientSampleId :  
 DDC86ME

Quant Method : Z:\svoasrv\HPCHEM1\BNA\_M\Methods\SFAM-EPA-BM092724.MA.M  
 Quant Title : SVOA CALIBRATION

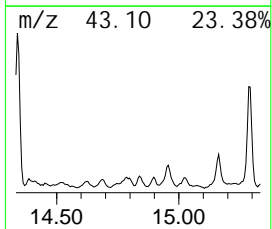
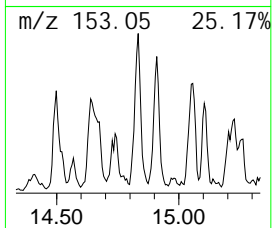
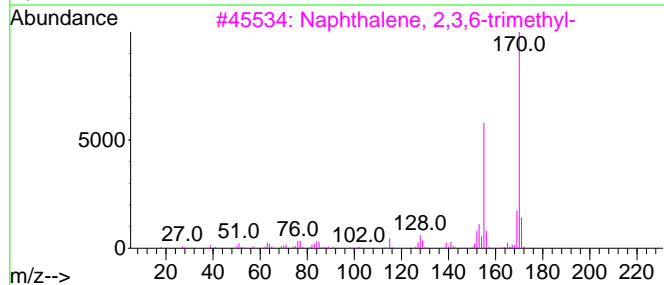
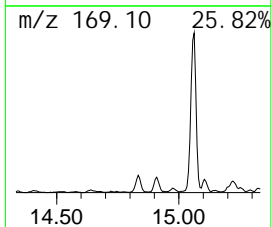
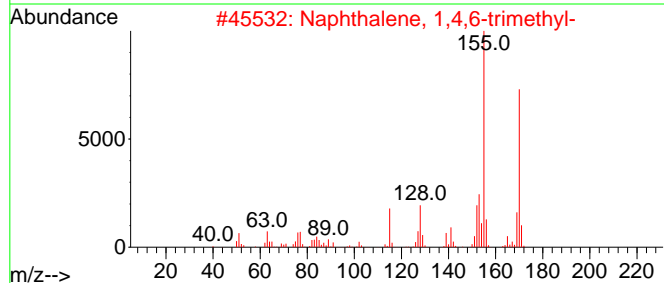
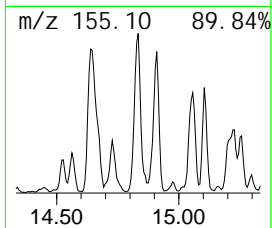
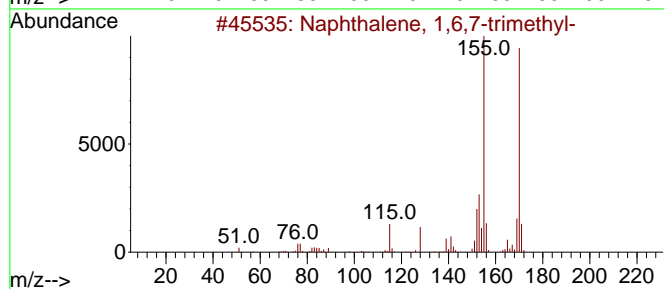
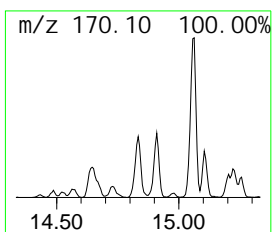
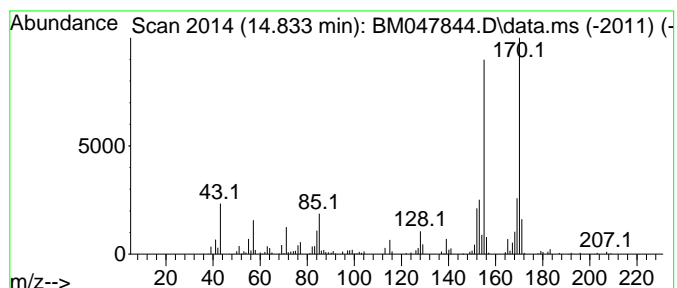
TIC Library : C:\Database\NIST20.L  
 TIC Integration Parameters: LSCINT.P

\*\*\*\*\*  
 Peak Number 20 Naphthalene, 1,6,7-trimethyl- Concentration Rank 33

R. T.	EstConc	Area	Relative to ISTD	R. T.
14.833	2.22 ng/ul	358618	Acenaphthene-d10	14.433

Hit#	of	5	Tentative ID	MW	Mol Form	CAS#	Qual
1			Naphthalene, 1,6,7-trimethyl-	170	C13H14	002245-38-7	87
2			Naphthalene, 1,4,6-trimethyl-	170	C13H14	002131-42-2	87
3			Naphthalene, 2,3,6-trimethyl-	170	C13H14	000829-26-5	83
4			Naphthalene, 2,3,6-trimethyl-	170	C13H14	000829-26-5	80
5			Naphthalene, 1,6,7-trimethyl-	170	C13H14	002245-38-7	74





Data Path : Z:\svoasrv\HPCHEM1\BNA\_M\Data\BM100324\  
 Data File : BM047844.D  
 Acq On : 04 Oct 2024 15:39  
 Operator : RC/JU  
 Sample : P4017-11ME  
 Misc :  
 ALS Vial : 44 Sample Multiplier: 1

Instrument :  
 BNA\_M  
 ClientSampleId :  
 DDC86ME

Quant Method : Z:\svoasrv\HPCHEM1\BNA\_M\Methods\SFAM-EPA-BM092724.MA.M  
 Quant Title : SVOA CALIBRATION

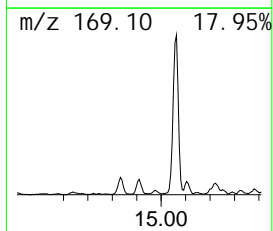
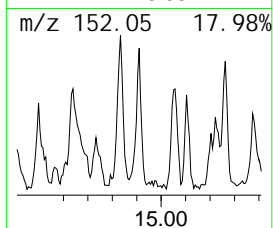
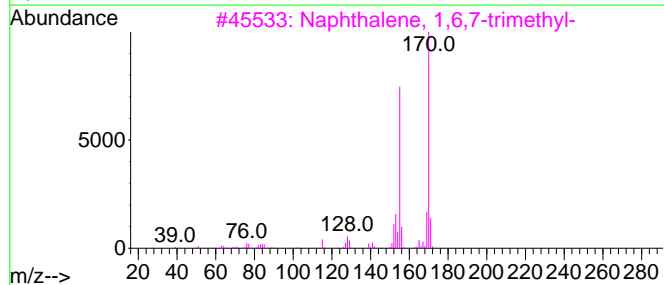
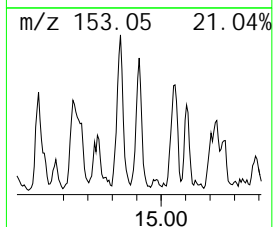
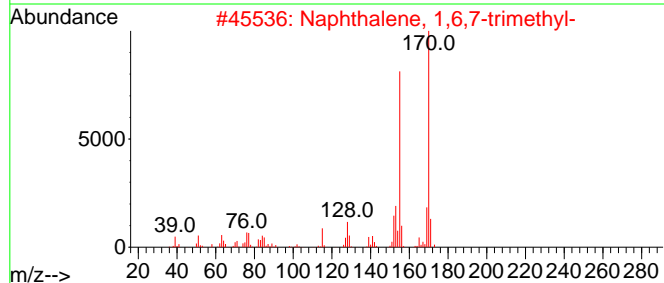
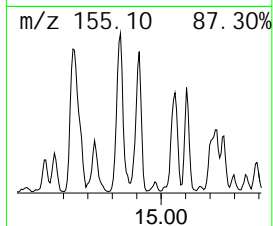
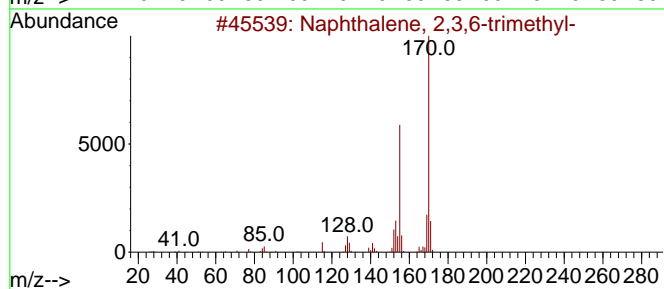
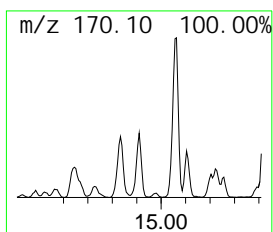
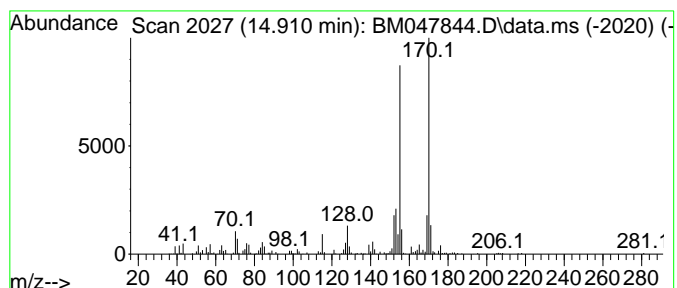
TIC Library : C:\Database\NI ST20.L  
 TIC Integration Parameters: LSCINT.P

\*\*\*\*\*  
 Peak Number 21 Naphthalene, 2,3,6-trimethyl- Concentration Rank 34

R. T.	EstConc	Area	Relative to ISTD	R. T.
14.910	2.21 ng/ul	356386	Acenaphthene-d10	14.433

Hit#	of	5	Tentative ID	MW	Mol Form	CAS#	Qual
1			Naphthalene, 2,3,6-trimethyl-	170	C13H14	000829-26-5	95
2			Naphthalene, 1,6,7-trimethyl-	170	C13H14	002245-38-7	95
3			Naphthalene, 1,6,7-trimethyl-	170	C13H14	002245-38-7	94
4			Naphthalene, 2,3,6-trimethyl-	170	C13H14	000829-26-5	94
5			Naphthalene, 1,6,7-trimethyl-	170	C13H14	002245-38-7	94



Data Path : Z:\svoasrv\HPCHEM1\BNA\_M\Data\BM100324\  
 Data File : BM047844.D  
 Acq On : 04 Oct 2024 15:39  
 Operator : RC/JU  
 Sample : P4017-11ME  
 Misc :  
 ALS Vial : 44 Sample Multiplier: 1

Instrument :  
 BNA\_M  
 ClientSampleId :  
 DDC86ME

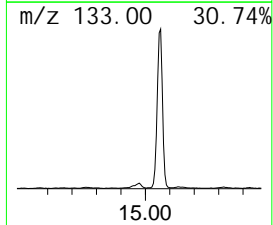
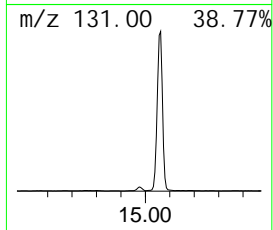
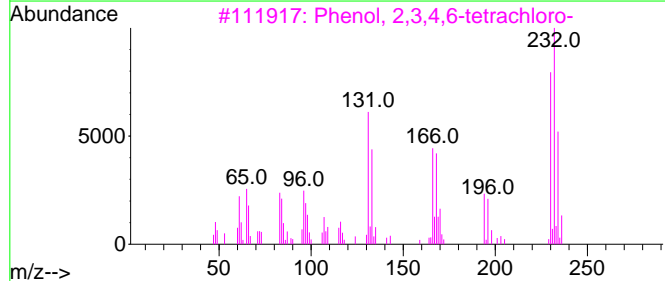
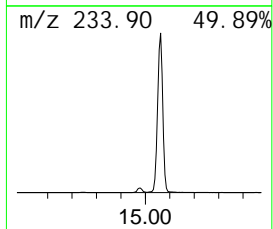
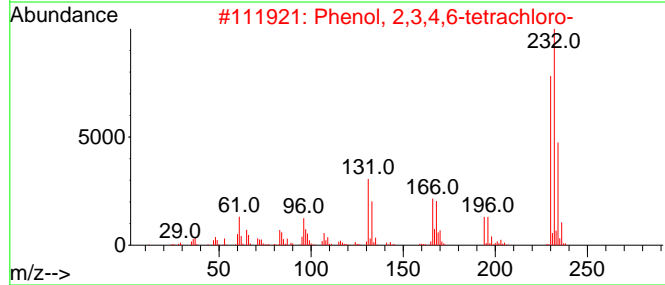
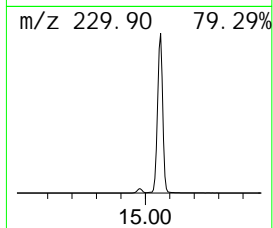
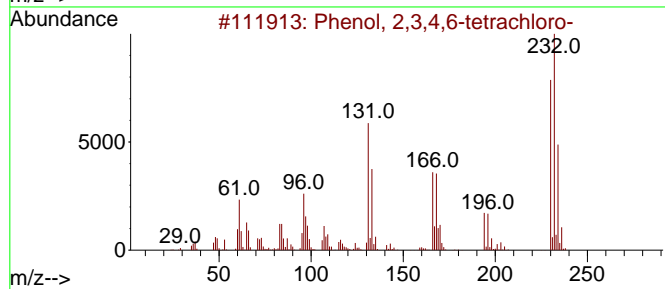
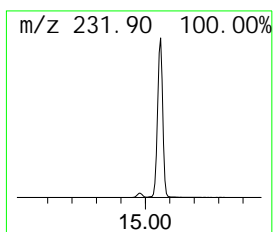
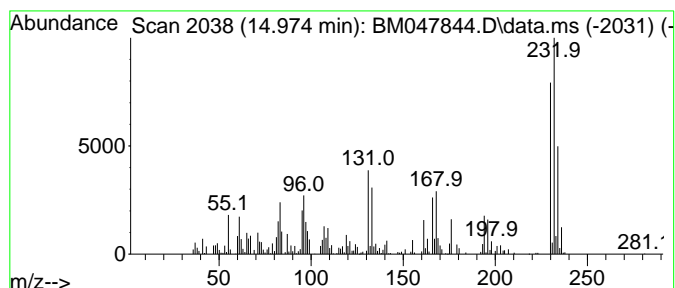
Quant Method : Z:\svoasrv\HPCHEM1\BNA\_M\Methods\SFAM-EPA-BM092724.MA.M  
 Quant Title : SVOA CALIBRATION

TIC Library : C:\Database\NI ST20.L  
 TIC Integration Parameters: LSCINT.P

\*\*\*\*\*  
 Peak Number 22 Phenol, 2,3,5,6-tetrachloro- Concentration Rank 29

R. T.	EstConc	Area	Relative to ISTD	R. T.
14.974	2.94 ng/ul	473770	Acenaphthene-d10	14.433

Hit#	of	5	Tentative ID	MW	Mol Form	CAS#	Qual
1	Phenol, 2,3,4,6-tetrachloro-	230	C6H2Cl4O	000058-90-2	96		
2	Phenol, 2,3,4,6-tetrachloro-	230	C6H2Cl4O	000058-90-2	95		
3	Phenol, 2,3,4,6-tetrachloro-	230	C6H2Cl4O	000058-90-2	95		
4	Phenol, 2,3,5,6-tetrachloro-	230	C6H2Cl4O	000935-95-5	94		
5	Phenol, 2,3,4,6-tetrachloro-	230	C6H2Cl4O	000058-90-2	94		



Data Path : Z:\svoasrv\HPCHEM1\BNA\_M\Data\BM100324\  
 Data File : BM047844.D  
 Acq On : 04 Oct 2024 15:39  
 Operator : RC/JU  
 Sample : P4017-11ME  
 Misc :  
 ALS Vial : 44 Sample Multiplier: 1

Instrument :  
 BNA\_M  
 ClientSampleId :  
 DDC86ME

Quant Method : Z:\svoasrv\HPCHEM1\BNA\_M\Methods\SFAM-EPA-BM092724.MA.M  
 Quant Title : SVOA CALIBRATION

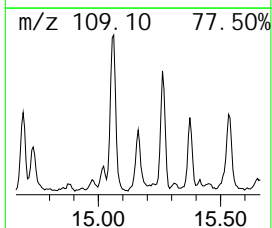
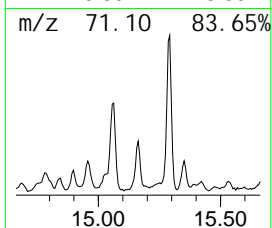
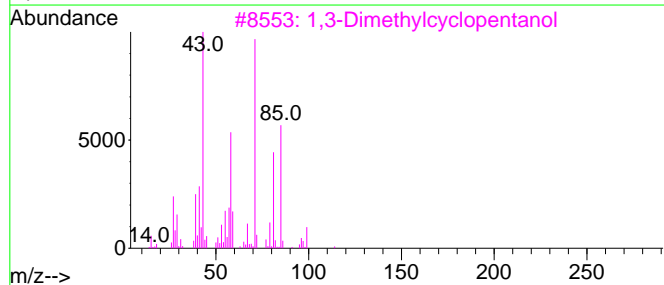
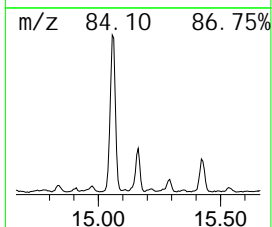
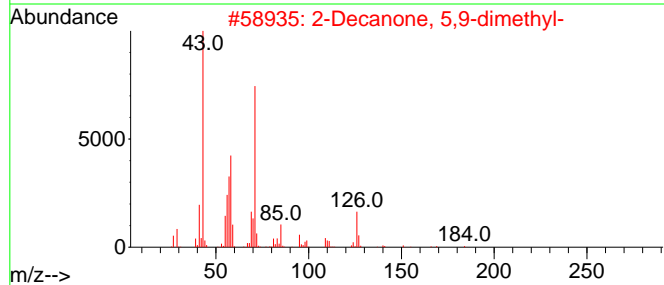
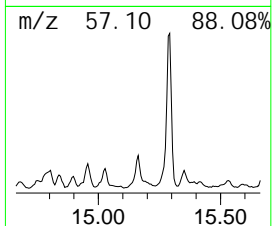
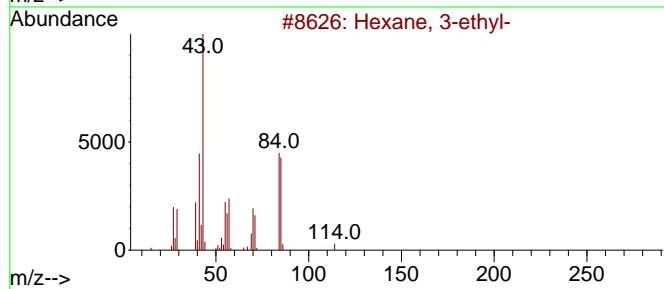
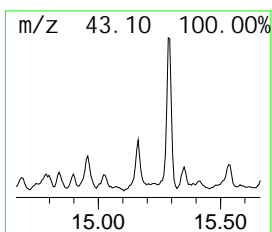
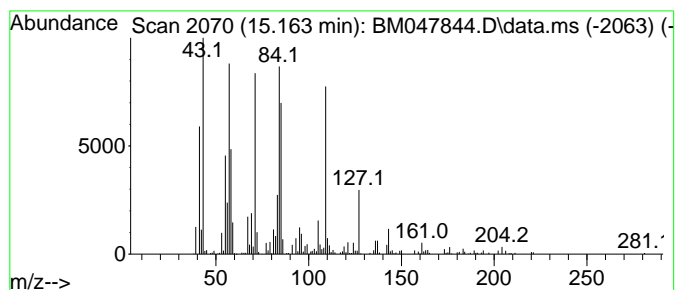
TIC Library : C:\Database\NI ST20.L  
 TIC Integration Parameters: LSCINT.P

\*\*\*\*\*  
 Peak Number 23 (DEL) Alkane: Straight-Chai... Concentration Rank 20

R. T.	EstConc	Area	Relative to ISTD	R. T.
15.163	3.95 ng/ul	637140	Acenaphthene-d10	14.433

Hit#	of	5	Tentative ID	MW	Mol Form	CAS#	Qual
1			Hexane, 3-ethyl-	114	C8H18	000619-99-8	38
2			2-Decanone, 5,9-dimethyl-	184	C12H24O	033933-82-3	38
3			1,3-Dimethylcyclopentanol	114	C7H14O	019550-46-0	30
4			4-Octanone	128	C8H16O	000589-63-9	27
5			Hexane, 2,3,4-trimethyl-	128	C9H20	000921-47-1	25



Data Path : Z:\svoasrv\HPCHEM1\BNA\_M\Data\BM100324\  
 Data File : BM047844.D  
 Acq On : 04 Oct 2024 15:39  
 Operator : RC/JU  
 Sample : P4017-11ME  
 Misc :  
 ALS Vial : 44 Sample Multiplier: 1

Instrument :  
 BNA\_M  
 ClientSampleId :  
 DDC86ME

Quant Method : Z:\svoasrv\HPCHEM1\BNA\_M\Methods\SFAM-EPA-BM092724.MA.M  
 Quant Title : SVOA CALIBRATION

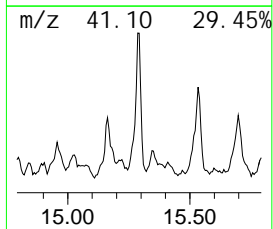
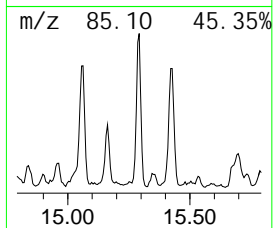
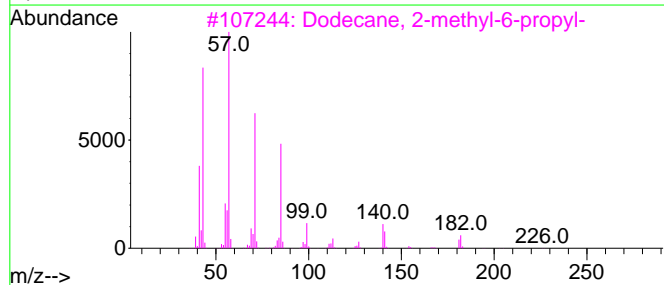
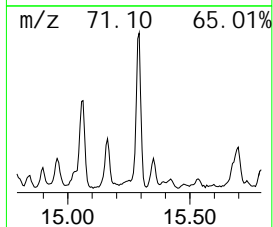
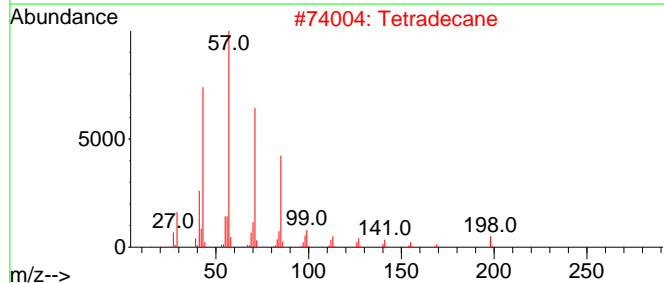
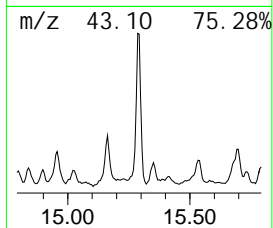
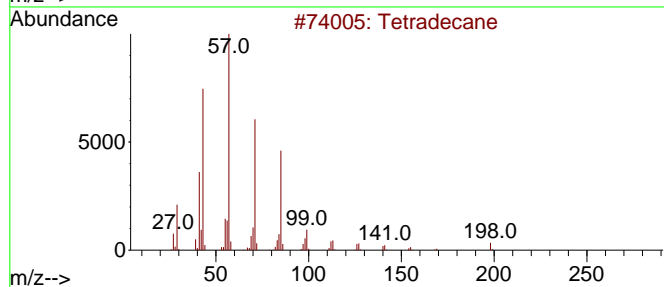
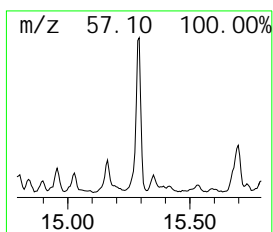
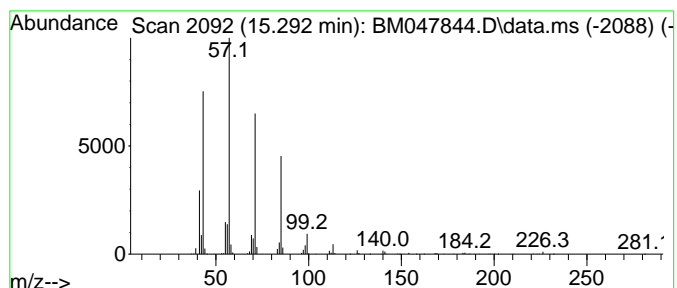
TIC Library : C:\Database\NI ST20.L  
 TIC Integration Parameters: LSCINT.P

\*\*\*\*\*  
 Peak Number 24 (DEL) Alkane: Straight-Chai... Concentration Rank 14

R. T.	EstConc	Area	Relative to ISTD	R. T.
15.292	4.37 ng/ul	704822	Acenaphthene-d10	14.433

Hit#	of 5	Tentative ID	MW	Mol Form	CAS#	Qual
1		Tetradecane	198	C14H30	000629-59-4	91
2		Tetradecane	198	C14H30	000629-59-4	91
3		Dodecane, 2-methyl-6-propyl-	226	C16H34	055045-08-4	90
4		Dodecane, 4-methyl-	184	C13H28	006117-97-1	83
5		Nonane, 5-butyl-	184	C13H28	017312-63-9	81



Data Path : Z:\svoasrv\HPCHEM1\BNA\_M\Data\BM100324\  
 Data File : BM047844.D  
 Acq On : 04 Oct 2024 15:39  
 Operator : RC/JU  
 Sample : P4017-11ME  
 Misc :  
 ALS Vial : 44 Sample Multiplier: 1

Instrument :  
 BNA\_M  
 ClientSampleId :  
 DDC86ME

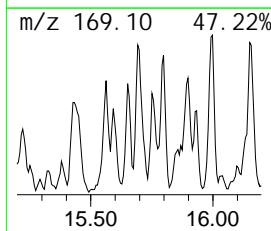
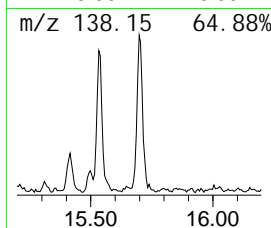
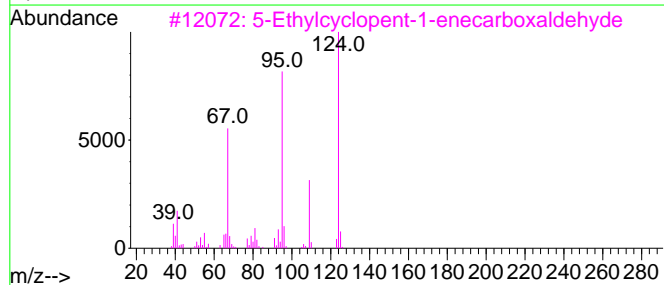
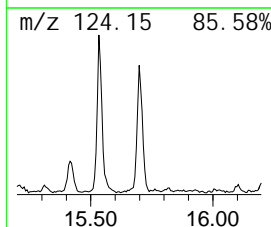
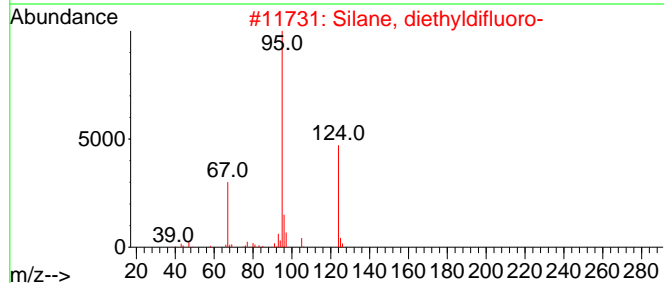
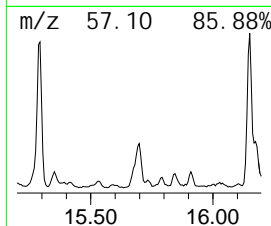
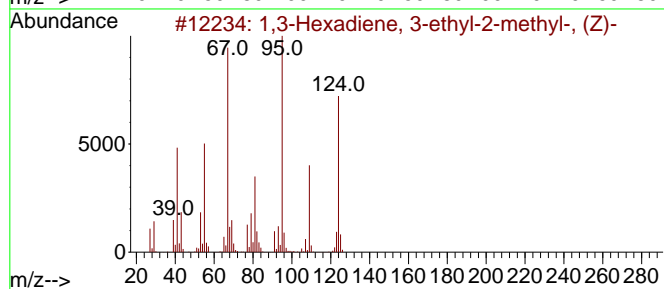
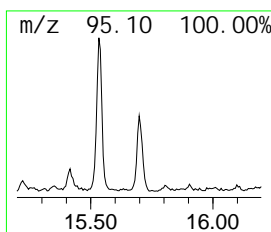
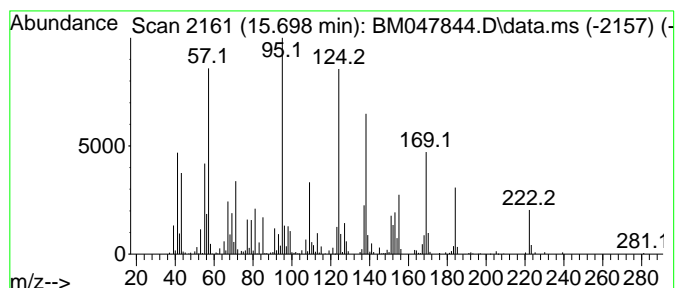
Quant Method : Z:\svoasrv\HPCHEM1\BNA\_M\Methods\SFAM-EPA-BM092724.MA.M  
 Quant Title : SVOA CALIBRATION

TIC Library : C:\Database\NI ST20.L  
 TIC Integration Parameters: LSCINT.P

\*\*\*\*\*  
 Peak Number 25 unknown-04 Concentration Rank 16

R. T.	EstConc	Area	Relative to ISTD	R. T.
15.698	4.07 ng/ul	657079	Acenaphthene-d10	14.433

Hit#	of	5	Tentative ID	MW	Mol Form	CAS#	Qual
1	1,3-Hexadiene, 3-ethyl-2-methyl-	...	124	C9H16	074752-97-9	38	
2	Silane, diethyl difluoro-		124	C4H10F2Si	000358-06-5	38	
3	5-Ethylcyclopent-1-enecarboxaldehyde	...	124	C8H12O	036431-60-4	38	
4	2-Nonyne		124	C9H16	019447-29-1	38	
5	Furan, 4-methyl-2-propyl-		124	C8H12O	006148-37-4	38	



Data Path : Z:\svoasrv\HPCHEM1\BNA\_M\Data\BM100324\  
 Data File : BM047844.D  
 Acq On : 04 Oct 2024 15:39  
 Operator : RC/JU  
 Sample : P4017-11ME  
 Misc :  
 ALS Vial : 44 Sample Multiplier: 1

Instrument :  
 BNA\_M  
 ClientSampleId :  
 DDC86ME

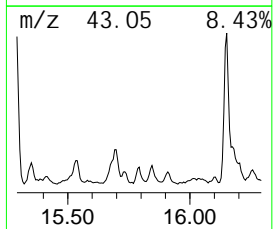
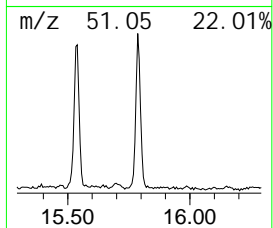
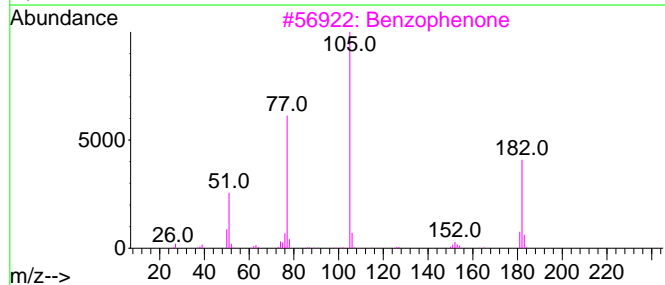
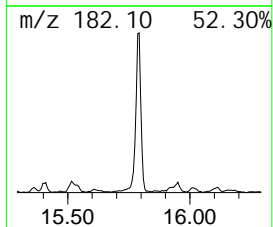
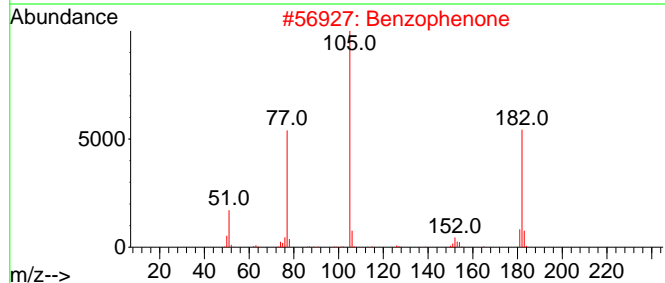
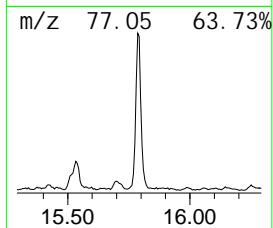
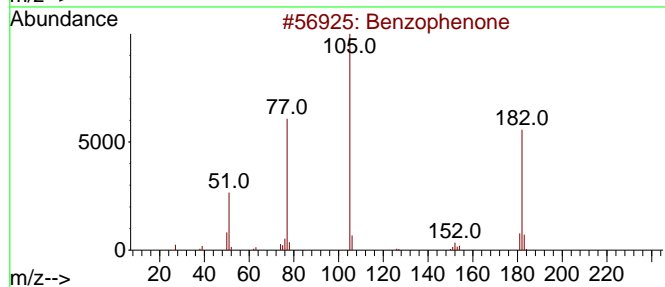
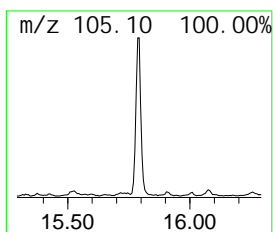
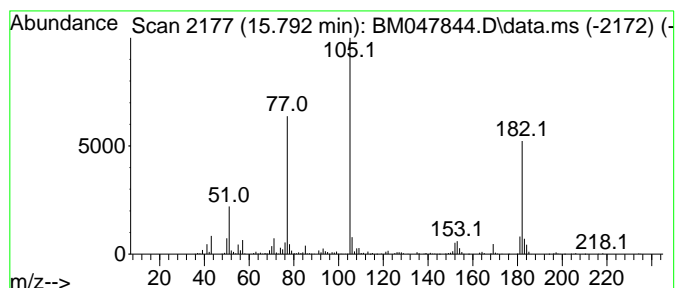
Quant Method : Z:\svoasrv\HPCHEM1\BNA\_M\Methods\SFAM-EPA-BM092724.MA.M  
 Quant Title : SVOA CALIBRATION

TIC Library : C:\Database\NIST20.L  
 TIC Integration Parameters: LSCINT.P

\*\*\*\*\*  
 Peak Number 26 Benzophenone Concentration Rank 12

R. T.	EstConc	Area	Relative to ISTD	R. T.
15.792	4.59 ng/ul	741461	Acenaphthene-d10	14.433

Hit#	of	5	Tentative ID	MW	Mol Form	CAS#	Qual
1			Benzophenone	182	C13H10O	000119-61-9	95
2			Benzophenone	182	C13H10O	000119-61-9	94
3			Benzophenone	182	C13H10O	000119-61-9	93
4			Benzophenone	182	C13H10O	000119-61-9	90
5			Azobenzene	182	C12H10N2	000103-33-3	64



Data Path : Z:\svoasrv\HPCHEM1\BNA\_M\Data\BM100324\  
 Data File : BM047844.D  
 Acq On : 04 Oct 2024 15:39  
 Operator : RC/JU  
 Sample : P4017-11ME  
 Misc :  
 ALS Vial : 44 Sample Multiplier: 1

**Instrument :**  
 BNA\_M  
**ClientSampleId :**  
 DDC86ME

Quant Method : Z:\svoasrv\HPCHEM1\BNA\_M\Methods\SFAM-EPA-BM092724.MA.M  
 Quant Title : SVOA CALIBRATION

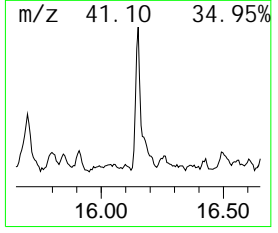
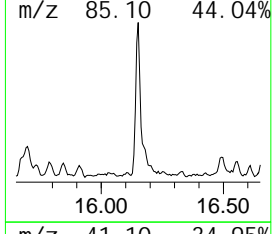
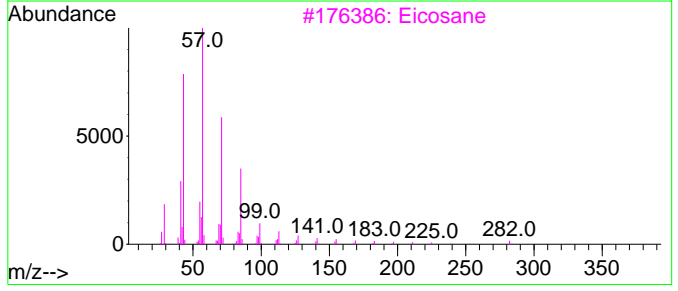
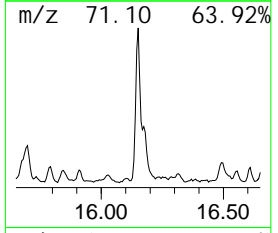
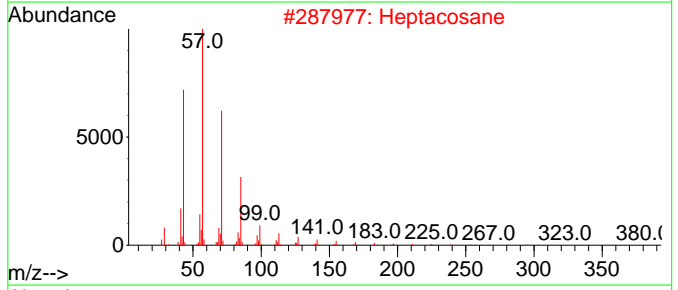
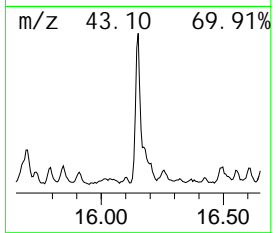
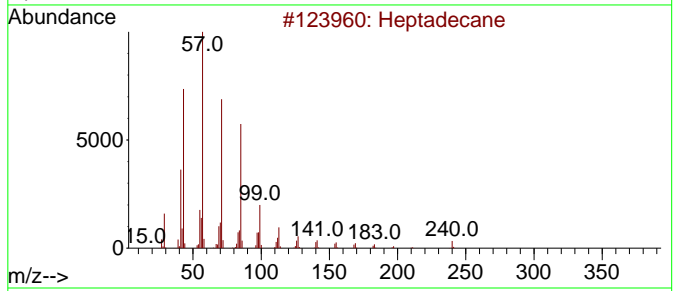
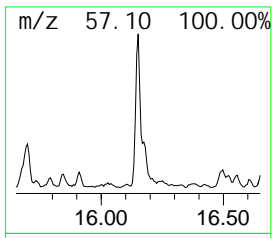
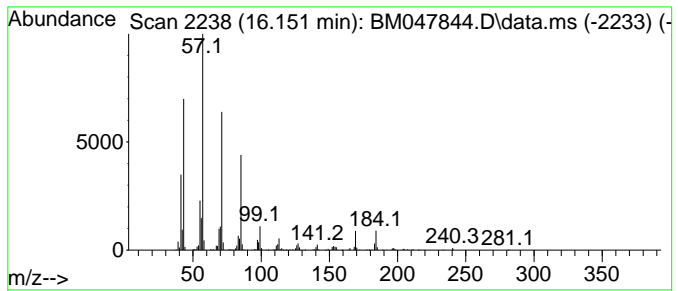
TIC Library : C:\Database\NI ST20.L  
 TIC Integration Parameters: LSCINT.P

\*\*\*\*\*  
 Peak Number 27 (DEL) Alkane: Straight-Chai... Concentration Rank 8

R. T.	EstConc	Area	Relative to ISTD	R. T.
16.151	6.32 ng/ul	1107730	Phenanthrene-d10	17.174

Hit#	of	5	Tentative ID	MW	Mol Form	CAS#	Qual
1			Heptadecane	240	C17H36	000629-78-7	95
2			Heptacosane	380	C27H56	000593-49-7	86
3			Eicosane	282	C20H42	000112-95-8	83
4			Heneicosane	296	C21H44	000629-94-7	80
5			Tridecane	184	C13H28	000629-50-5	80



Data Path : Z:\svoasrv\HPCHEM1\BNA\_M\Data\BM100324\  
 Data File : BM047844.D  
 Acq On : 04 Oct 2024 15:39  
 Operator : RC/JU  
 Sample : P4017-11ME  
 Misc :  
 ALS Vial : 44 Sample Multiplier: 1

Instrument :  
 BNA\_M  
 ClientSampleId :  
 DDC86ME

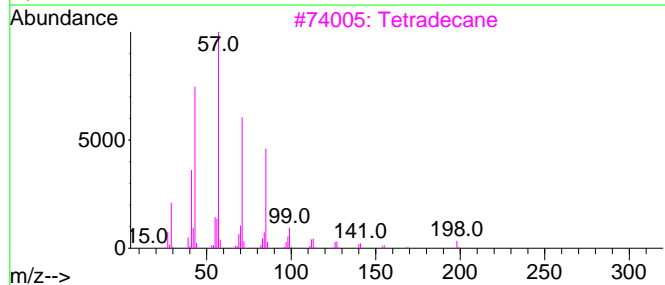
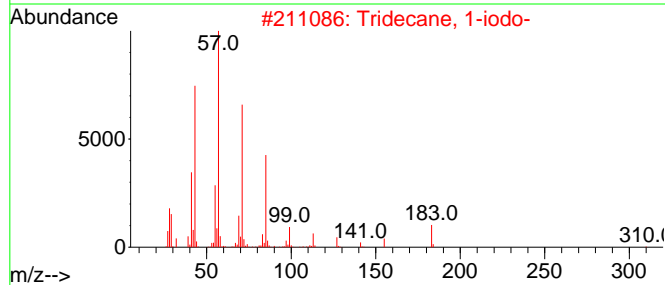
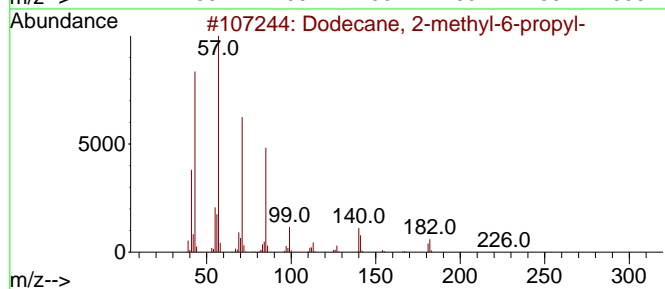
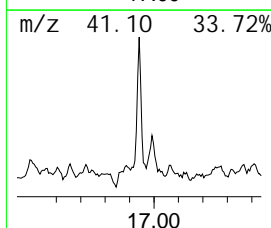
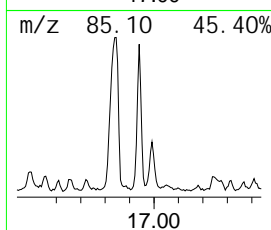
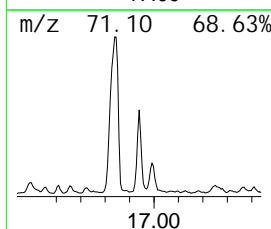
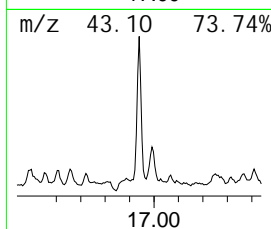
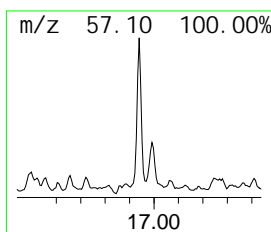
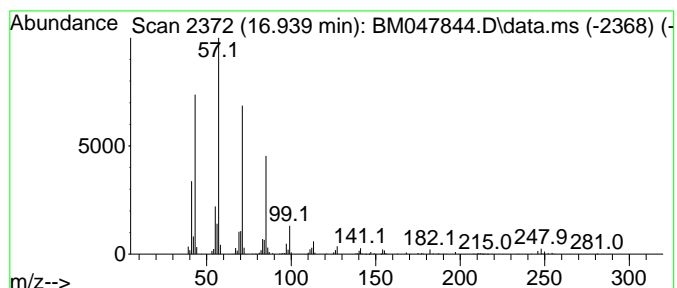
Quant Method : Z:\svoasrv\HPCHEM1\BNA\_M\Methods\SFAM-EPA-BM092724.MA.M  
 Quant Title : SVOA CALIBRATION

TIC Library : C:\Database\NI ST20.L  
 TIC Integration Parameters: LSCINT.P

\*\*\*\*\*  
 Peak Number 28 (DEL) Alkane: Straight-Chai... Concentration Rank 21

R. T.	EstConc	Area	Relative to ISTD	R. T.
16.939	3.87 ng/ul	678218	Phenanthrene-d10	17.174

Hit#	of 5	Tentative ID	MW	Mol Form	CAS#	Qual
1		Dodecane, 2-methyl-6-propyl-	226	C16H34	055045-08-4	86
2		Tridecane, 1-iodo-	310	C13H27I	035599-77-0	86
3		Tetradecane	198	C14H30	000629-59-4	86
4		Tetradecane, 1-iodo-	324	C14H29I	019218-94-1	86
5		Pentadecane	212	C15H32	000629-62-9	86





Data Path : Z:\svoasrv\HPCHEM1\BNA\_M\Data\BM100324\  
 Data File : BM047844.D  
 Acq On : 04 Oct 2024 15:39  
 Operator : RC/JU  
 Sample : P4017-11ME  
 Misc :  
 ALS Vial : 44 Sample Multiplier: 1

Instrument :  
 BNA\_M  
 ClientSampleId :  
 DDC86ME

Quant Method : Z:\svoasrv\HPCHEM1\BNA\_M\Methods\SFAM-EPA-BM092724.MA.M  
 Quant Title : SVOA CALIBRATION

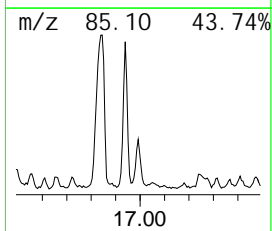
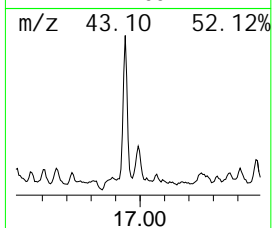
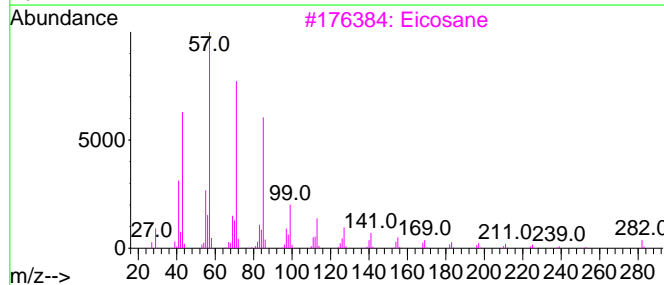
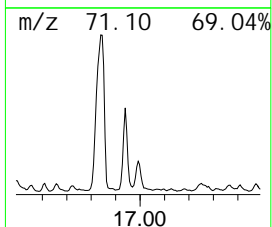
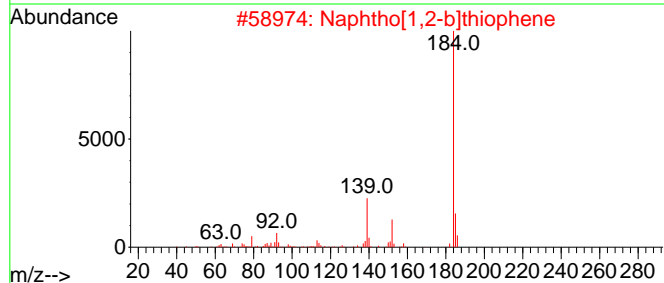
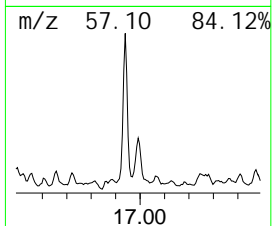
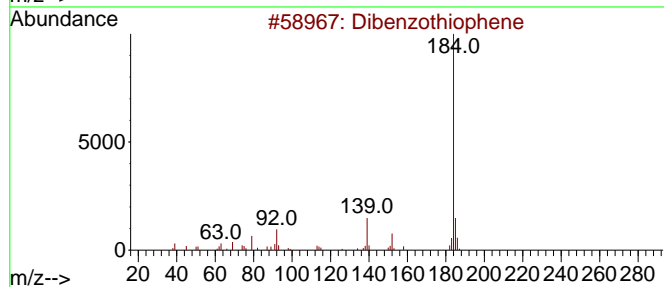
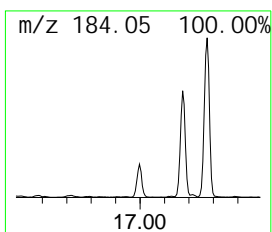
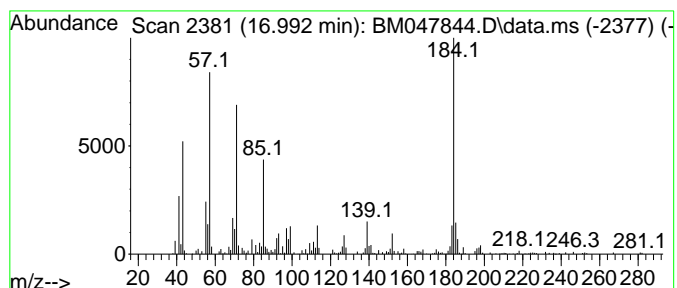
TIC Library : C:\Database\NIST20.L  
 TIC Integration Parameters: LSCINT.P

\*\*\*\*\*  
 Peak Number 29 Di benzothiophene Concentration Rank 28

R. T.	EstConc	Area	Relative to ISTD	R. T.
16.992	3.02 ng/ul	528733	Phenanthrene-d10	17.174

Hit#	of	5	Tentative ID	MW	Mol Form	CAS#	Qual
1			Di benzothiophene	184	C12H8S	000132-65-0	87
2			Naphtho[1,2-b]thiophene	184	C12H8S	000234-41-3	64
3			Eicosane	282	C20H42	000112-95-8	56
4			Naphtho[2,1-b]thiophene	184	C12H8S	000233-02-3	55
5			Di benzothiophene	184	C12H8S	000132-65-0	55



Data Path : Z:\svoasrv\HPCHEM1\BNA\_M\Data\BM100324\  
 Data File : BM047844.D  
 Acq On : 04 Oct 2024 15:39  
 Operator : RC/JU  
 Sample : P4017-11ME  
 Misc :  
 ALS Vial : 44 Sample Multiplier: 1

Instrument :  
 BNA\_M  
 ClientSampleId :  
 DDC86ME

Quant Method : Z:\svoasrv\HPCHEM1\BNA\_M\Methods\SFAM-EPA-BM092724.MA.M  
 Quant Title : SVOA CALIBRATION

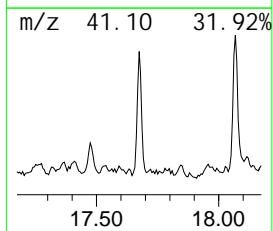
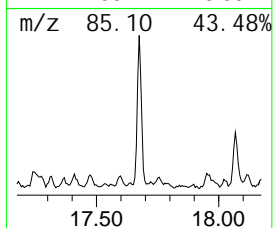
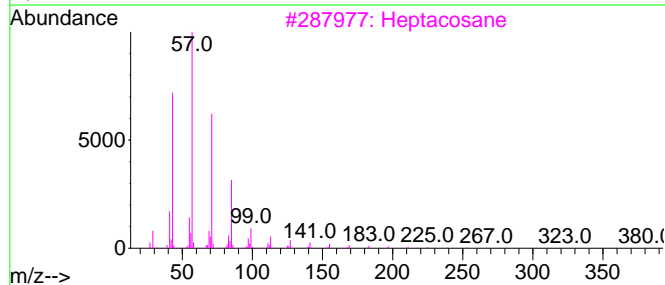
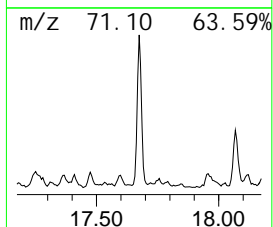
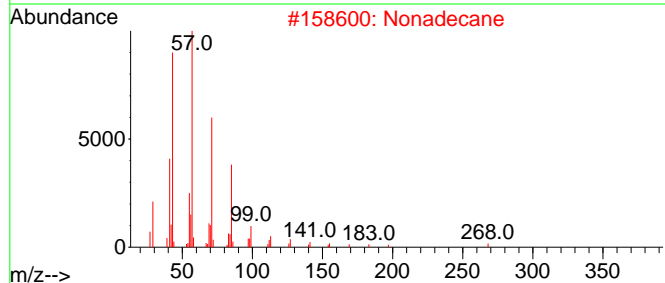
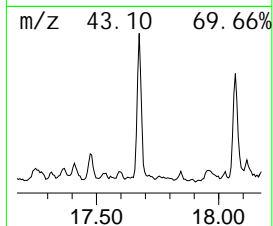
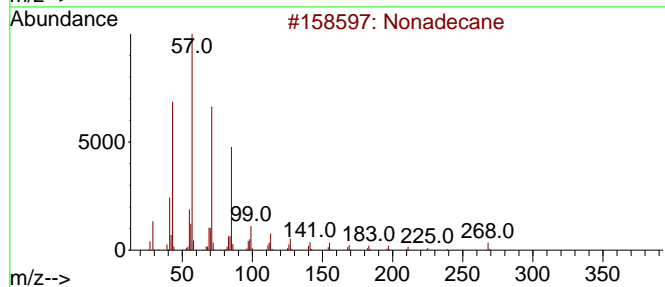
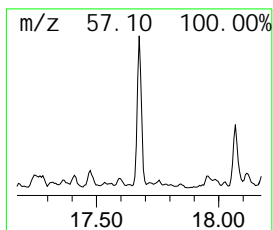
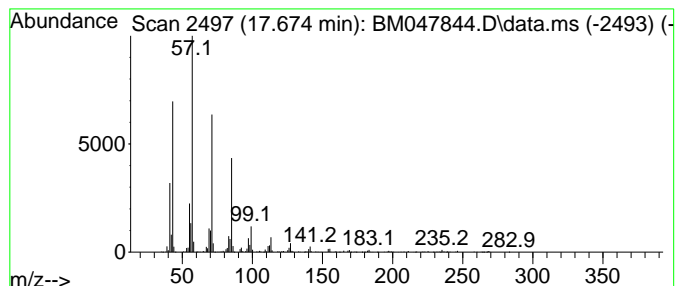
TIC Library : C:\Database\NIST20.L  
 TIC Integration Parameters: LSCINT.P

\*\*\*\*\*  
 Peak Number 30 (DEL) Alkane: Straight-Chai... Concentration Rank 22

R. T.	EstConc	Area	Relative to ISTD	R. T.
17.674	3.73 ng/ul	654410	Phenanthrene-d10	17.174

Hit#	of	5	Tentative ID	MW	Mol Form	CAS#	Qual
1			Nonadecane	268	C19H40	000629-92-5	94
2			Nonadecane	268	C19H40	000629-92-5	91
3			Heptacosane	380	C27H56	000593-49-7	91
4			Heneicosane	296	C21H44	000629-94-7	91
5			Dodecane, 2-methyl-6-propyl-	226	C16H34	055045-08-4	90



Data Path : Z:\svoasrv\HPCHEM1\BNA\_M\Data\BM100324\  
 Data File : BM047844.D  
 Acq On : 04 Oct 2024 15:39  
 Operator : RC/JU  
 Sample : P4017-11ME  
 Misc :  
 ALS Vial : 44 Sample Multiplier: 1

Instrument :  
 BNA\_M  
 ClientSampleId :  
 DDC86ME

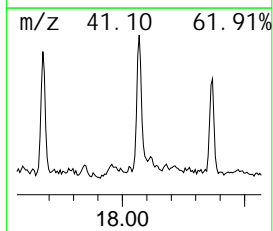
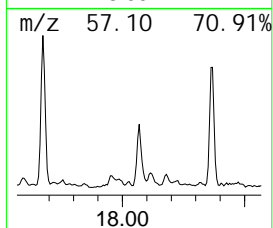
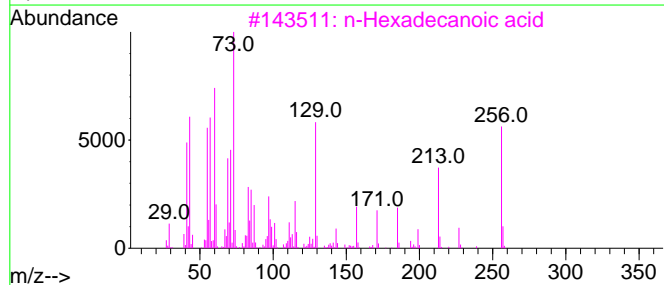
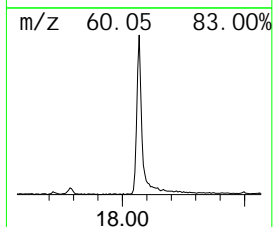
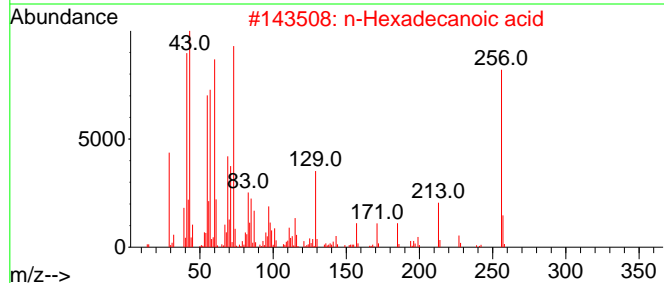
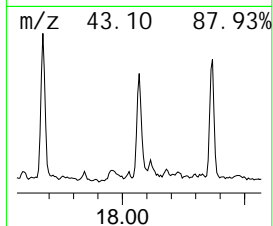
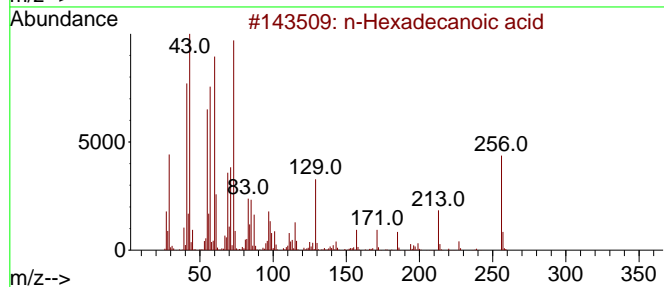
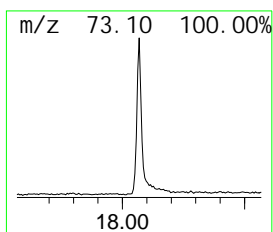
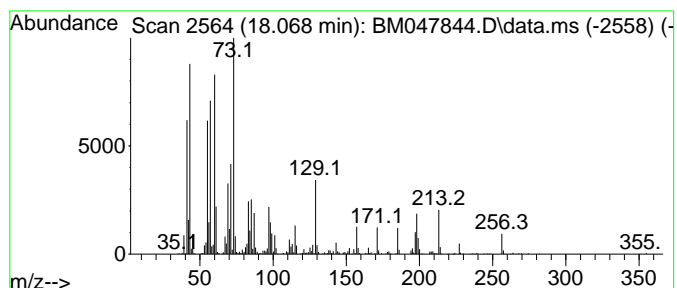
Quant Method : Z:\svoasrv\HPCHEM1\BNA\_M\Methods\SFAM-EPA-BM092724.MA.M  
 Quant Title : SVOA CALIBRATION

TIC Library : C:\Database\NI ST20.L  
 TIC Integration Parameters: LSCINT.P

\*\*\*\*\*  
 Peak Number 31 n-Hexadecanoic acid Concentration Rank 4

R. T.	EstConc	Area	Relative to ISTD	R. T.
18.068	7.54 ng/ul	1321970	Phenanthrene-d10	17.174

Hit#	of	5	Tentative ID	MW	Mol Form	CAS#	Qual
1			n-Hexadecanoic acid	256	C16H32O2	000057-10-3	98
2			n-Hexadecanoic acid	256	C16H32O2	000057-10-3	98
3			n-Hexadecanoic acid	256	C16H32O2	000057-10-3	98
4			n-Hexadecanoic acid	256	C16H32O2	000057-10-3	98
5			Octadecanoic acid	284	C18H36O2	000057-11-4	81



Data Path : Z:\svoasrv\HPCHEM1\BNA\_M\Data\BM100324\  
 Data File : BM047844.D  
 Acq On : 04 Oct 2024 15:39  
 Operator : RC/JU  
 Sample : P4017-11ME  
 Misc :  
 ALS Vial : 44 Sample Multiplier: 1

**Instrument :**  
 BNA\_M  
**ClientSampleId :**  
 DDC86ME

Quant Method : Z:\svoasrv\HPCHEM1\BNA\_M\Methods\SFAM-EPA-BM092724.MA.M  
 Quant Title : SVOA CALIBRATION

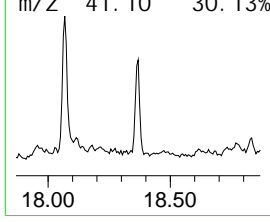
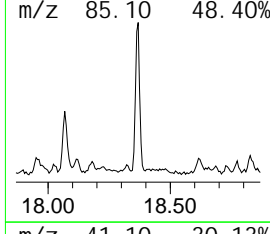
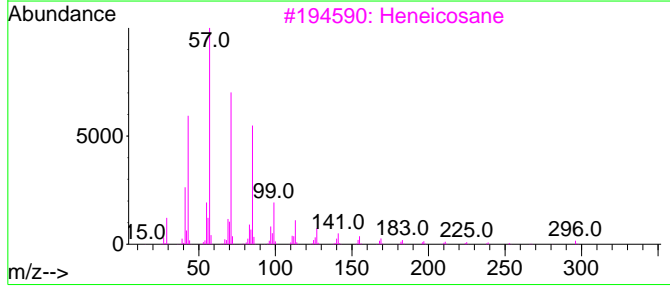
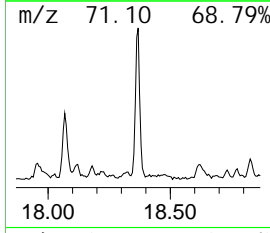
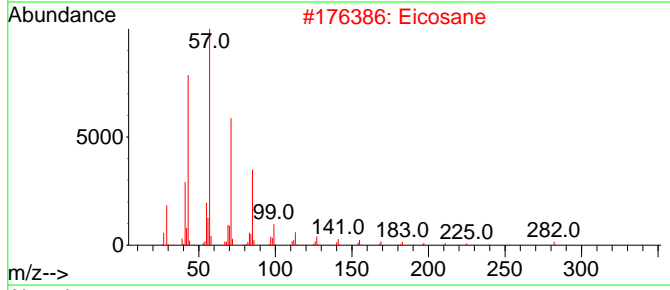
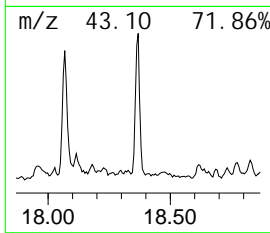
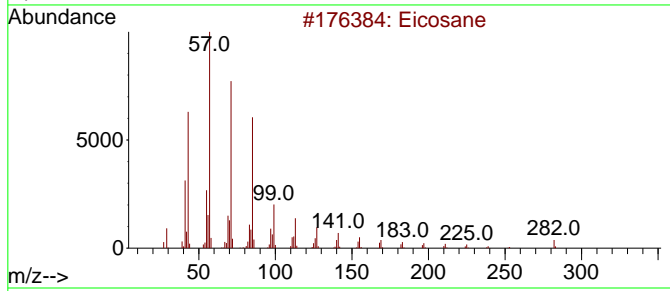
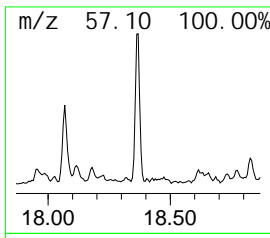
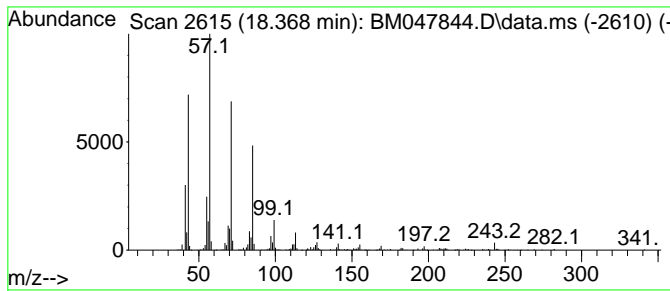
TIC Library : C:\Database\NI ST20.L  
 TIC Integration Parameters: LSCINT.P

\*\*\*\*\*  
 Peak Number 32 (DEL) Alkane: Straight-Chai... Concentration Rank 23

R. T.	EstConc	Area	Relative to ISTD	R. T.
18.368	3.48 ng/ul	609842	Phenanthrene-d10	17.174

Hit#	of	5	Tentative ID	MW	Mol Form	CAS#	Qual
1	Ei	cosane	282	C20H42	000112-95-8	97	
2	Ei	cosane	282	C20H42	000112-95-8	93	
3	Henei	cosane	296	C21H44	000629-94-7	91	
4	Nonadecane	268	C19H40	000629-92-5	91		
5	Tri	decane, 6-propyl -	226	C16H34	055045-10-8	87	



Data Path : Z:\svoasrv\HPCHEM1\BNA\_M\Data\BM100324\  
 Data File : BM047844.D  
 Acq On : 04 Oct 2024 15:39  
 Operator : RC/JU  
 Sample : P4017-11ME  
 Misc :  
 ALS Vial : 44 Sample Multiplier: 1

**Instrument :**  
 BNA\_M  
**ClientSampleId :**  
 DDC86ME

Quant Method : Z:\svoasrv\HPCHEM1\BNA\_M\Methods\SFAM-EPA-BM092724.MA.M  
 Quant Title : SVOA CALIBRATION

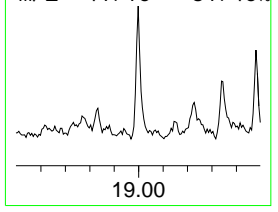
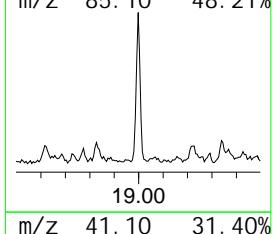
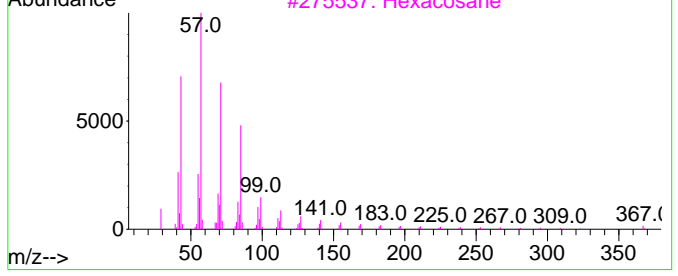
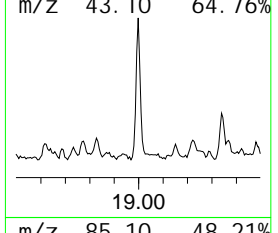
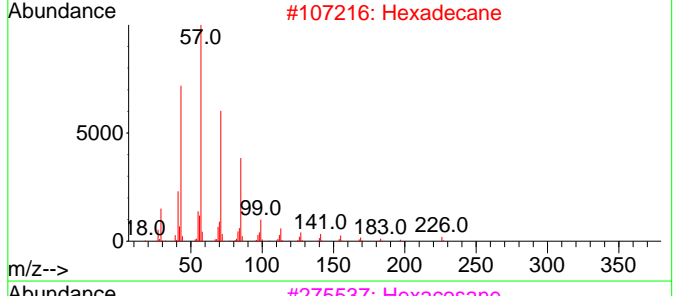
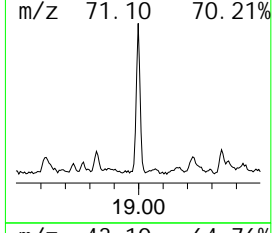
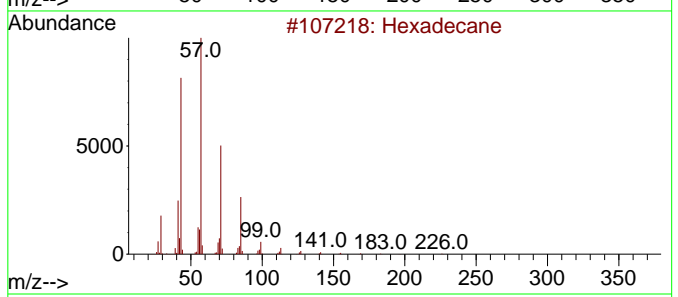
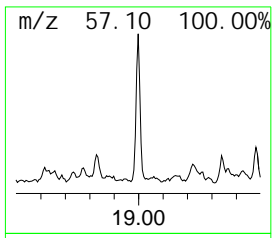
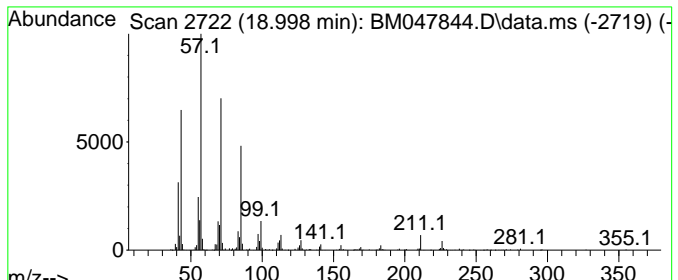
TIC Library : C:\Database\NI ST20.L  
 TIC Integration Parameters: LSCINT.P

\*\*\*\*\*  
 Peak Number 33 (DEL) Alkane: Straight-Chai... Concentration Rank 26

R. T.	EstConc	Area	Relative to ISTD	R. T.
18.998	3.10 ng/ul	542854	Phenanthrene-d10	17.174

Hit#	of	5	Tentative ID	MW	Mol Form	CAS#	Qual
1			Hexadecane	226	C16H34	000544-76-3	95
2			Hexadecane	226	C16H34	000544-76-3	94
3			Hexacosane	366	C26H54	000630-01-3	90
4			Hexadecane	226	C16H34	000544-76-3	89
5			Octadecane	254	C18H38	000593-45-3	87



Data Path : Z:\svoasrv\HPCHEM1\BNA\_M\Data\BM100324\  
 Data File : BM047844.D  
 Acq On : 04 Oct 2024 15:39  
 Operator : RC/JU  
 Sample : P4017-11ME  
 Misc :  
 ALS Vial : 44 Sample Multiplier: 1

Instrument :  
 BNA\_M  
 ClientSampleId :  
 DDC86ME

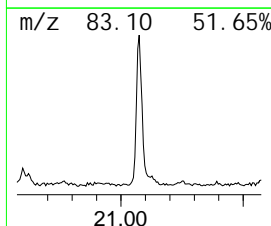
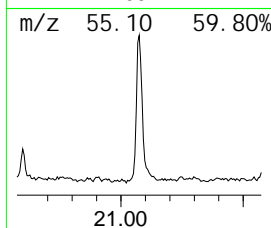
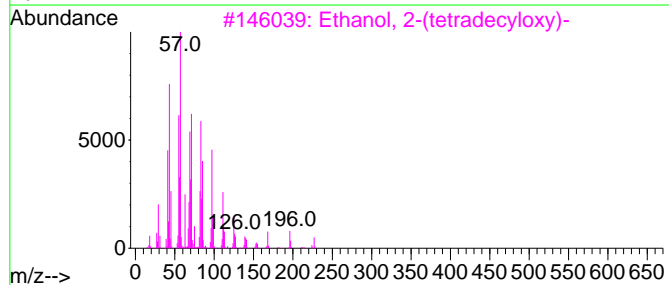
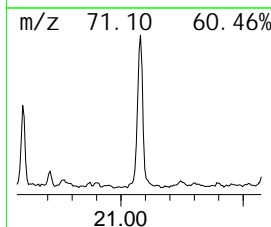
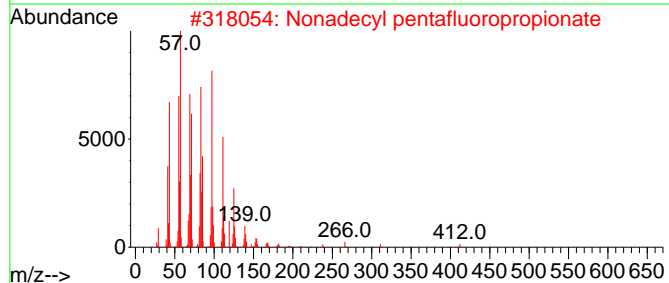
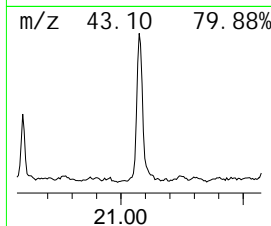
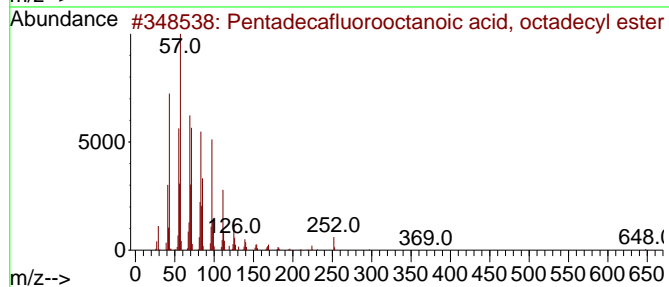
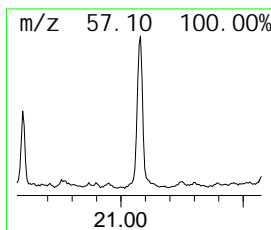
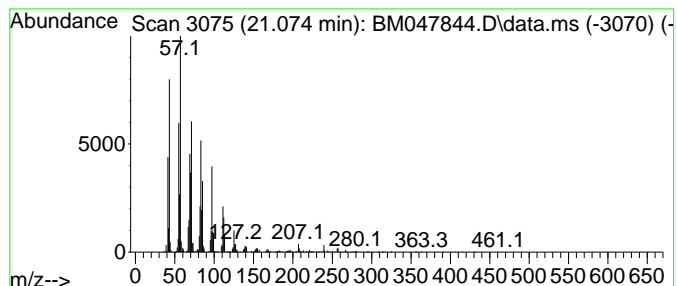
Quant Method : Z:\svoasrv\HPCHEM1\BNA\_M\Methods\SFAM-EPA-BM092724.MA.M  
 Quant Title : SVOA CALIBRATION

TIC Library : C:\Database\NIST20.L  
 TIC Integration Parameters: LSCINT.P

\*\*\*\*\*  
 Peak Number 34 Pentadecafluorooctanoic aci... Concentration Rank 6

R. T.	EstConc	Area	Relative to ISTD	R. T.
21.074	6.56 ng/ul	1342930	Chrysene-d12	21.398

Hit#	of	5	Tentative ID	MW	Mol Form	CAS#	Qual
1			Pentadecafluorooctanoic acid, oc...	666	C26H37F15O2	1000406-04-8	91
2			Nonadecyl pentafluoropropionate	430	C22H39F5O2	1000351-88-8	91
3			Ethanol, 2-(tetradecyloxy)-	258	C16H34O2	002136-70-1	91
4			Triacetyl heptafluorobutyrate	634	C34H61F7O2	1000351-83-2	87
5			Hexacosyl pentafluoropropionate	528	C29H53F5O2	1000351-81-2	87



Data Path : Z:\svoasrv\HPCHEM1\BNA\_M\Data\BM100324\  
 Data File : BM047844.D  
 Acq On : 04 Oct 2024 15:39  
 Operator : RC/JU  
 Sample : P4017-11ME  
 Misc :  
 ALS Vial : 44 Sample Multiplier: 1

**Instrument :**  
 BNA\_M  
**ClientSampleId :**  
 DDC86ME

Quant Method : Z:\svoasrv\HPCHEM1\BNA\_M\Methods\SFAM-EPA-BM092724.MA.M  
 Quant Title : SVOA CALIBRATION

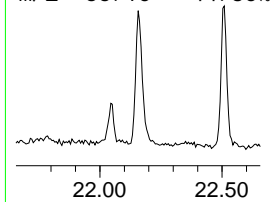
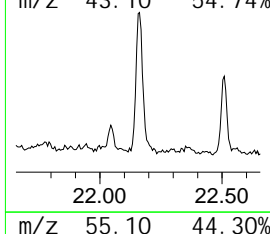
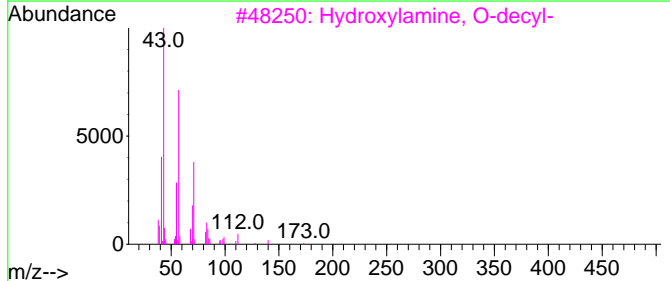
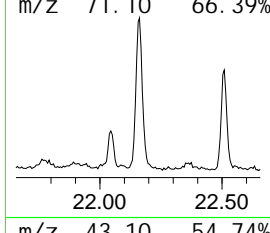
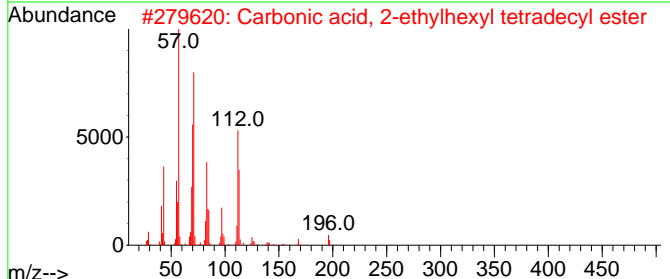
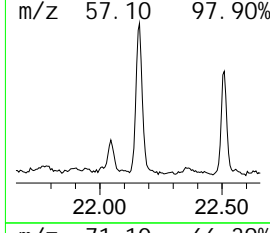
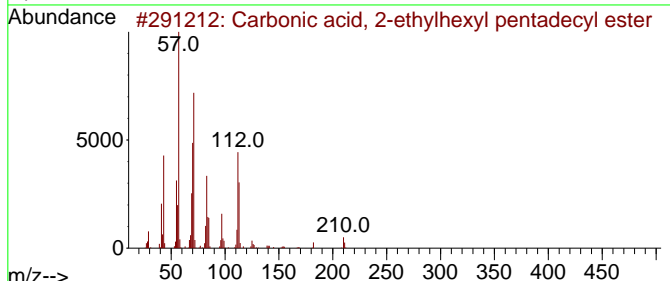
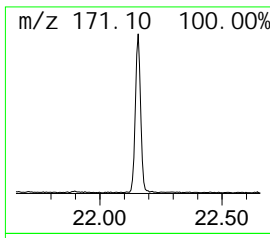
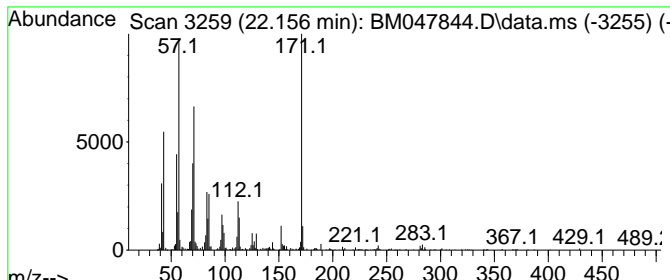
TIC Library : C:\Database\NIST20.L  
 TIC Integration Parameters: LSCINT.P

\*\*\*\*\*  
 Peak Number 35 unknown-05 Concentration Rank 13

R. T.	EstConc	Area	Relative to ISTD	R. T.
22.156	4.41 ng/ul	902132	Chrysene-d12	21.398

Hit#	of	5	Tentative ID	MW	Mol Form	CAS#	Qual
1			Carbonic acid, 2-ethylhexyl pent...	384	C24H48O3	1000383-14-2	43
2			Carbonic acid, 2-ethylhexyl tetr...	370	C23H46O3	1010383-14-1	38
3			Hydroxylamine, O-decyl-	173	C10H23NO	029812-79-1	38
4			Heptadecane, 2,6-dimethyl-	268	C19H40	054105-67-8	35
5			Tridecane, 4-methyl-	198	C14H30	026730-12-1	30



Data Path : Z:\svoasrv\HPCHEM1\BNA\_M\Data\BM100324\  
 Data File : BM047844.D  
 Acq On : 04 Oct 2024 15:39  
 Operator : RC/JU  
 Sample : P4017-11ME  
 Misc :  
 ALS Vial : 44 Sample Multiplier: 1

Instrument :  
 BNA\_M  
 ClientSampleId :  
 DDC86ME

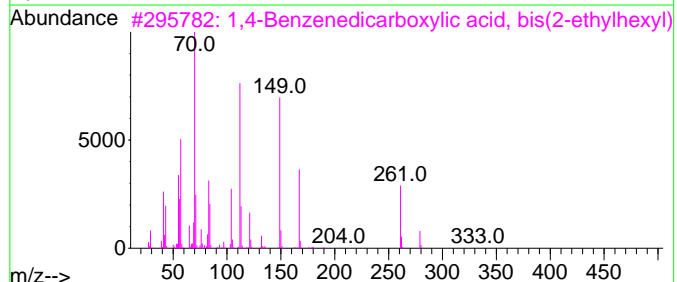
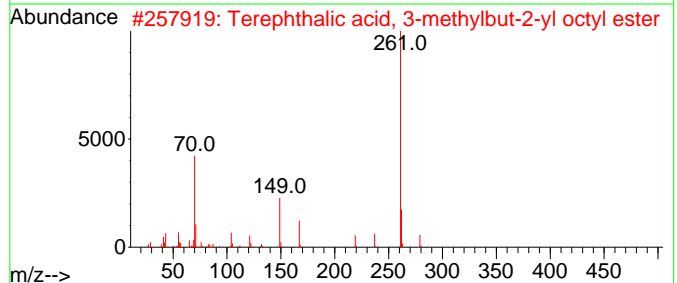
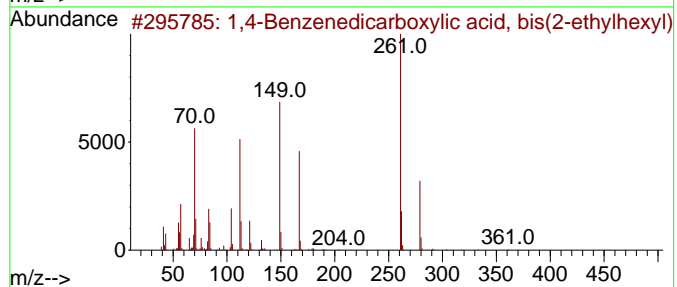
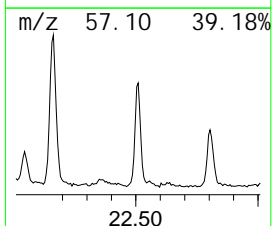
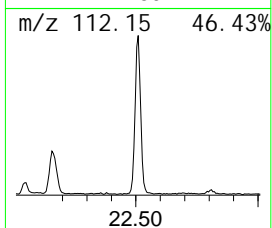
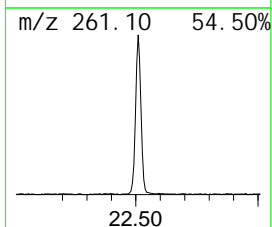
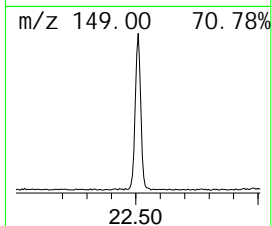
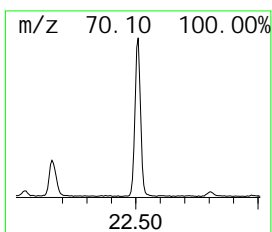
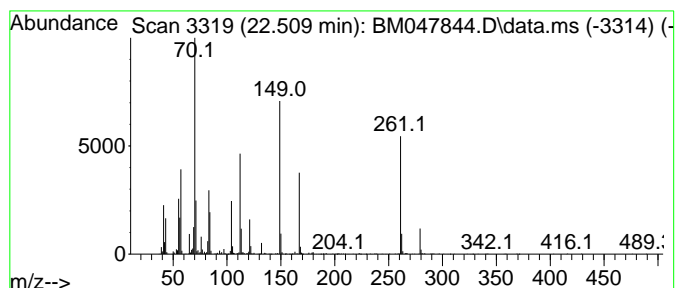
Quant Method : Z:\svoasrv\HPCHEM1\BNA\_M\Methods\SFAM-EPA-BM092724.MA.M  
 Quant Title : SVOA CALIBRATION

TIC Library : C:\Database\NI ST20.L  
 TIC Integration Parameters: LSCINT.P

\*\*\*\*\*  
 Peak Number 36 1,4-Benzenedicarboxylic aci... Concentration Rank 9

R. T.	EstConc	Area	Relative to ISTD	R. T.
22.509	5.90 ng/ul	1208270	Chrysene-d12	21.398

Hit#	of	5	Tentative ID	MW	Mol Form	CAS#	Qual
1			1,4-Benzenedicarboxylic acid, bi...	390	C24H38O4	006422-86-2	81
2			Terephthalic acid, 3-methylbut-2...	348	C21H32O4	1000356-27-6	59
3			1,4-Benzenedicarboxylic acid, bi...	390	C24H38O4	006422-86-2	52
4			Terephthalic acid, 2-ethylhexyl ...	390	C24H38O4	1000324-00-5	52
5			1,3-Benzenedicarboxylic acid, bi...	390	C24H38O4	000137-89-3	49





Data Path : Z:\svoasrv\HPCHEM1\BNA\_M\Data\BM100324\  
 Data File : BM047844.D  
 Acq On : 04 Oct 2024 15:39  
 Operator : RC/JU  
 Sample : P4017-11ME  
 Misc :  
 ALS Vial : 44 Sample Multiplier: 1

Instrument :  
 BNA\_M  
 ClientSampleId :  
 DDC86ME

Quant Method : Z:\svoasrv\HPCHEM1\BNA\_M\Methods\SFAM-EPA-BM092724.MA.M  
 Quant Title : SVOA CALIBRATION

TIC Library : C:\Database\NIST20.L  
 TIC Integration Parameters: LSCINT.P

TIC Top Hit name	RT	EstConc	Units	Response	--Internal Standard--			
					#	RT	Resp	Conc
Mesitylene	7.451	4.0	ng/ul	385767	1	7.798	1915040	20.0
(DEL) Alkane: S...	7.728	2.2	ng/ul	214956	1	7.798	1915040	20.0
Decyl octyl ether	7.875	2.1	ng/ul	205026	1	7.798	1915040	20.0
(DEL) Alkane: S...	8.334	3.5	ng/ul	330817	1	7.798	1915040	20.0
(DEL) Alkane: S...	8.569	2.8	ng/ul	266342	1	7.798	1915040	20.0
o-Cymene	8.798	4.0	ng/ul	385089	1	7.798	1915040	20.0
(DEL) Alkane: S...	9.034	6.7	ng/ul	638706	1	7.798	1915040	20.0
unknown-01	9.151	4.0	ng/ul	383481	1	7.798	1915040	20.0
4-Methyl-3-hept...	11.104	4.3	ng/ul	2336430	2	10.592	10837600	20.0
Bis(3,3,5,5-tet...	12.686	3.1	ng/ul	499251	3	14.433	3227600	20.0
unknown-02	12.781	3.2	ng/ul	518737	3	14.433	3227600	20.0
1H-Pyrazole, 4,...	13.010	6.5	ng/ul	1055090	3	14.433	3227600	20.0
Carbonic acid, ...	13.269	5.3	ng/ul	862555	3	14.433	3227600	20.0
Phenol, 2-(2-pe...	13.398	2.1	ng/ul	340177	3	14.433	3227600	20.0
2-(2-Methyl-1H-...	13.486	12.2	ng/ul	1970960	3	14.433	3227600	20.0
Pyridine-2,4-di...	13.622	9.1	ng/ul	1462860	3	14.433	3227600	20.0
Naphthalene, 2,...	13.757	5.7	ng/ul	923937	3	14.433	3227600	20.0
Sulfurous acid, ...	14.339	8.8	ng/ul	1411590	3	14.433	3227600	20.0
unknown-03	14.692	2.3	ng/ul	365243	3	14.433	3227600	20.0
Naphthalene, 1,...	14.833	2.2	ng/ul	358618	3	14.433	3227600	20.0
Naphthalene, 2,...	14.910	2.2	ng/ul	356386	3	14.433	3227600	20.0
Phenol, 2,3,5,6...	14.974	2.9	ng/ul	473770	3	14.433	3227600	20.0
(DEL) Alkane: S...	15.163	4.0	ng/ul	637140	3	14.433	3227600	20.0
(DEL) Alkane: S...	15.292	4.4	ng/ul	704822	3	14.433	3227600	20.0
unknown-04	15.698	4.1	ng/ul	657079	3	14.433	3227600	20.0
Benzophenone	15.792	4.6	ng/ul	741461	3	14.433	3227600	20.0
(DEL) Alkane: S...	16.151	6.3	ng/ul	1107730	4	17.174	3507220	20.0
(DEL) Alkane: S...	16.939	3.9	ng/ul	678218	4	17.174	3507220	20.0
Di benzothiophene	16.992	3.0	ng/ul	528733	4	17.174	3507220	20.0
(DEL) Alkane: S...	17.674	3.7	ng/ul	654410	4	17.174	3507220	20.0
n-Hexadecanoic ...	18.068	7.5	ng/ul	1321970	4	17.174	3507220	20.0
(DEL) Alkane: S...	18.368	3.5	ng/ul	609842	4	17.174	3507220	20.0
(DEL) Alkane: S...	18.998	3.1	ng/ul	542854	4	17.174	3507220	20.0
Pentadecafuoro...	21.074	6.6	ng/ul	1342930	5	21.398	4095550	20.0
unknown-05	22.156	4.4	ng/ul	902132	5	21.398	4095550	20.0
1,4-Benzenedi ca...	22.509	5.9	ng/ul	1208270	5	21.398	4095550	20.0