

Data Path : Z:\svoasrv\HPCHEM1\BNA_M\Data\BM100324\
 Data File : BM047866.D
 Acq On : 05 Oct 2024 07:31
 Operator : RC/JU
 Sample : P4020-05ME
 Misc :
 ALS Vial : 22 Sample Multiplier: 1

Instrument :
 BNA_M
 ClientSampleId :
 DDCF9ME

Integration Parameters: LSCINT.P

Integrator: RTE
 Smoothing : OFF Filtering: 5
 Sampling : 1 Min Area: 0.1 % of largest Peak
 Start Thrs: 0.2 Max Peaks: 100
 Stop Thrs : 0 Peak Location: TOP

If leading or trailing edge < 100 prefer < Baseline drop else tangent >
 Peak separation: 5

Method : Z:\svoasrv\HPCHEM1\BNA_M\Methods\SFAM-EPA-BM092724.MA.M
 Title : SVOA CALIBRATION

Signal : TIC: BM047866.D\data.ms

| peak # | R.T. min | first scan | max scan | last scan | PK TY | peak height | corr. area | corr. % max. | % of total |
|--------|----------|------------|----------|-----------|-------|-------------|------------|--------------|------------|
| 1 | 3.252 | 41 | 45 | 54 | rVB | 67332 | 91794 | 0.27% | 0.097% |
| 2 | 3.663 | 111 | 115 | 133 | rBV | 911103 | 1425706 | 4.19% | 1.513% |
| 3 | 6.963 | 669 | 676 | 692 | rBV | 995253 | 1564231 | 4.60% | 1.660% |
| 4 | 7.128 | 697 | 704 | 712 | rVV | 841817 | 1271565 | 3.74% | 1.350% |
| 5 | 7.328 | 732 | 738 | 750 | rBV | 977761 | 1574573 | 4.63% | 1.671% |
| 6 | 7.798 | 811 | 818 | 826 | rBV | 780903 | 1212203 | 3.56% | 1.287% |
| 7 | 8.498 | 930 | 937 | 953 | rBV | 1209886 | 1971858 | 5.80% | 2.093% |
| 8 | 8.951 | 1006 | 1014 | 1023 | rBV | 949853 | 1548005 | 4.55% | 1.643% |
| 9 | 9.516 | 1105 | 1110 | 1116 | rBV2 | 30973 | 49551 | 0.15% | 0.053% |
| 10 | 9.675 | 1126 | 1137 | 1152 | rBV | 739049 | 1235522 | 3.63% | 1.312% |
| 11 | 10.210 | 1220 | 1228 | 1241 | rBV | 1164271 | 1934623 | 5.69% | 2.054% |
| 12 | 10.592 | 1285 | 1293 | 1300 | rBV | 980159 | 1702680 | 5.01% | 1.807% |
| 13 | 10.722 | 1307 | 1315 | 1331 | rBV | 1131632 | 2026949 | 5.96% | 2.152% |
| 14 | 13.839 | 1838 | 1845 | 1855 | rBV | 2128722 | 2881244 | 8.47% | 3.058% |
| 15 | 14.122 | 1886 | 1893 | 1903 | rVB | 2431328 | 3577486 | 10.52% | 3.798% |
| 16 | 14.433 | 1939 | 1946 | 1954 | rVB | 1442801 | 2162007 | 6.36% | 2.295% |
| 17 | 14.622 | 1972 | 1978 | 1993 | rBV | 849353 | 1308986 | 3.85% | 1.390% |
| 18 | 15.057 | 2046 | 2052 | 2063 | rVB | 308442 | 453479 | 1.33% | 0.481% |
| 19 | 15.421 | 2107 | 2114 | 2123 | rBV | 3143364 | 4344593 | 12.77% | 4.612% |
| 20 | 15.533 | 2126 | 2133 | 2147 | rVV | 822096 | 1122537 | 3.30% | 1.192% |
| 21 | 15.786 | 2170 | 2176 | 2186 | rBV | 353220 | 485104 | 1.43% | 0.515% |
| 22 | 16.833 | 2344 | 2354 | 2366 | rBV | 21060303 | 34013057 | 100.00% | 36.105% |
| 23 | 16.992 | 2378 | 2381 | 2390 | rVB5 | 34890 | 55837 | 0.16% | 0.059% |
| 24 | 17.168 | 2405 | 2411 | 2421 | rBV | 1773681 | 2533816 | 7.45% | 2.690% |
| 25 | 17.268 | 2422 | 2428 | 2440 | rVV | 3502491 | 4766730 | 14.01% | 5.060% |
| 26 | 17.786 | 2511 | 2516 | 2522 | rVB | 255587 | 333855 | 0.98% | 0.354% |
| 27 | 18.062 | 2558 | 2563 | 2570 | rBV | 280336 | 413041 | 1.21% | 0.438% |
| 28 | 18.133 | 2572 | 2575 | 2579 | rVB3 | 50632 | 71683 | 0.21% | 0.076% |
| 29 | 18.362 | 2611 | 2614 | 2617 | rBV4 | 25849 | 37018 | 0.11% | 0.039% |
| 30 | 19.121 | 2739 | 2743 | 2747 | rBV3 | 44033 | 55600 | 0.16% | 0.059% |
| 31 | 19.192 | 2751 | 2755 | 2758 | rBV | 52630 | 70664 | 0.21% | 0.075% |
| 32 | 19.339 | 2776 | 2780 | 2788 | rBV3 | 65972 | 111197 | 0.33% | 0.118% |
| 33 | 19.557 | 2811 | 2817 | 2828 | rBV | 4327455 | 5641469 | 16.59% | 5.989% |
| 34 | 20.104 | 2907 | 2910 | 2913 | rVB2 | 44229 | 45417 | 0.13% | 0.048% |
| 35 | 20.592 | 2991 | 2993 | 2997 | rVB | 47679 | 43662 | 0.13% | 0.046% |
| 36 | 21.068 | 3070 | 3074 | 3085 | rBV | 347967 | 537544 | 1.58% | 0.571% |

Data Path : Z:\svoasrv\HPCHEM1\BNA_M\Data\BM100324\
Data File : BM047866.D
Acq On : 05 Oct 2024 07:31
Operator : RC/JU
Sample : P4020-05ME
Misc :
ALS Vial : 22 Sample Multiplier: 1

Instrument :
BNA_M
ClientSampleId :
DDCF9ME

Integration Parameters: LSCINT.P
Integrator: RTE
Smoothing : OFF Filtering: 5
Sampling : 1 Min Area: 0.1 % of largest Peak
Start Thrs: 0.2 Max Peaks: 100
Stop Thrs : 0 Peak Location: TOP

If leading or trailing edge < 100 prefer < Baseline drop else tangent >
Peak separation: 5

Method : Z:\svoasrv\HPCHEM1\BNA_M\Methods\SFAM-EPA-BM092724.MA.M
Title : SVOA CALIBRATION

| | | | | | | | | | |
|----|--------|------|------|------|-----|---------|---------|--------|--------|
| 37 | 21.392 | 3123 | 3129 | 3141 | rBV | 1883923 | 2808693 | 8.26% | 2.981% |
| 38 | 24.186 | 3595 | 3604 | 3617 | rVB | 2240316 | 5422080 | 15.94% | 5.756% |
| 39 | 24.391 | 3630 | 3639 | 3655 | rVB | 1187778 | 3298750 | 9.70% | 3.502% |

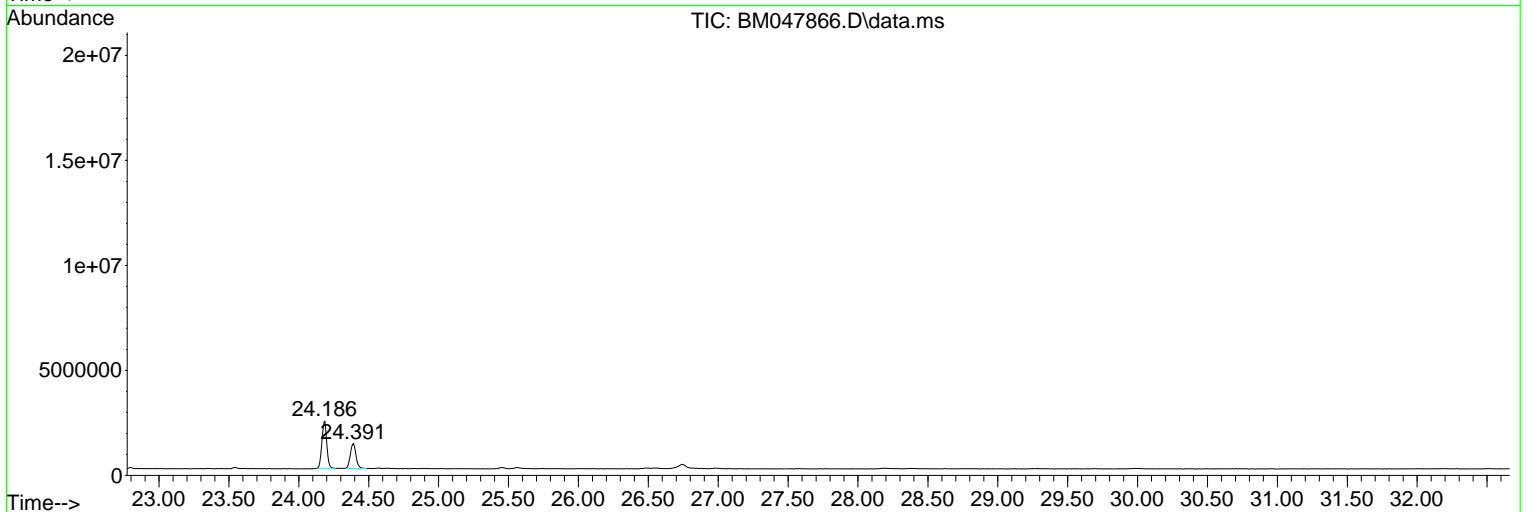
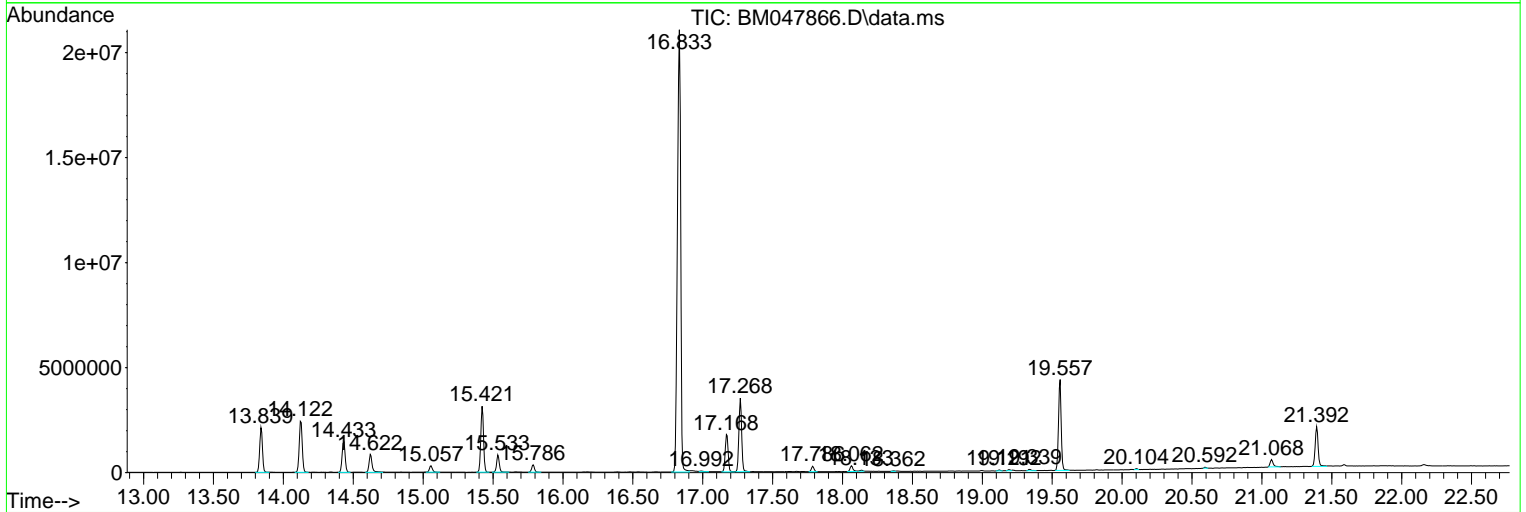
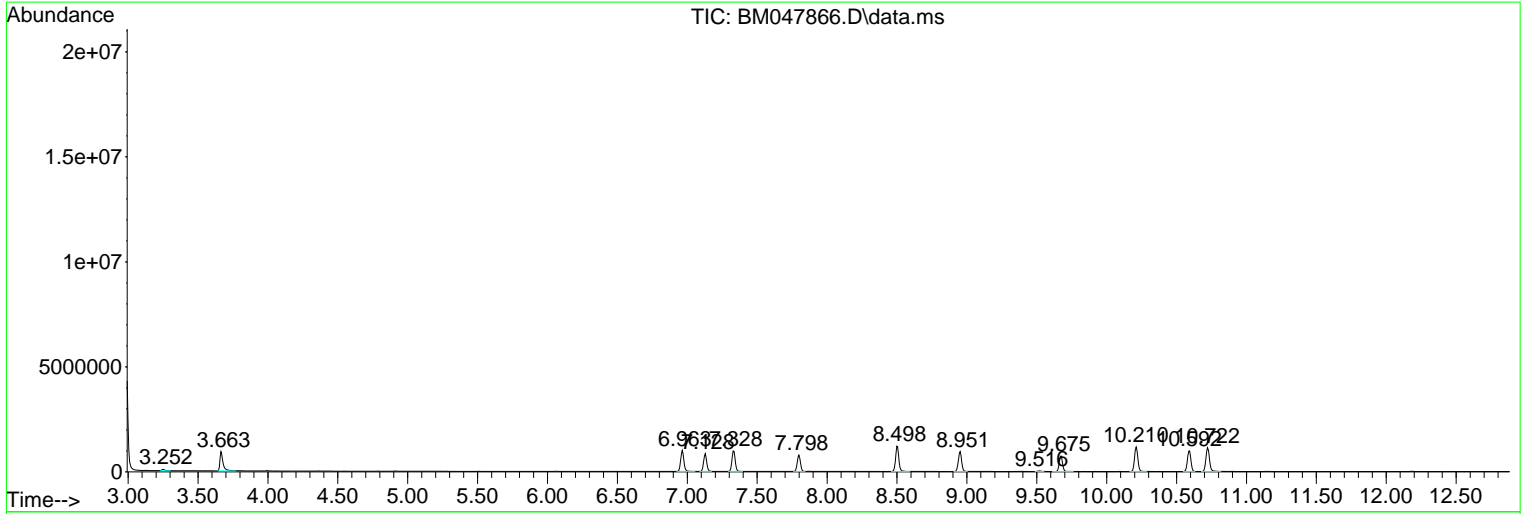
Sum of corrected areas: 94204809

Data Path : Z:\svoasrv\HPCHEM1\BNA_M\Data\BM100324\
 Data File : BM047866.D
 Acq On : 05 Oct 2024 07:31
 Operator : RC/JU
 Sample : P4020-05ME
 Misc :
 ALS Vial : 22 Sample Multiplier: 1

Instrument :
 BNA_M
ClientSampleId :
 DDCF9ME

Quant Method : Z:\svoasrv\HPCHEM1\BNA_M\Methods\SFAM-EPA-BM092724.MA.M
 Quant Title : SVOA CALIBRATION

TIC Library : C:\Database\NIST20.L
 TIC Integration Parameters: LSCINT.P



Data Path : Z:\svoasrv\HPCHEM1\BNA_M\Data\BM100324\
 Data File : BM047866.D
 Acq On : 05 Oct 2024 07:31
 Operator : RC/JU
 Sample : P4020-05ME
 Misc :
 ALS Vial : 22 Sample Multiplier: 1

Instrument :
 BNA_M
 ClientSampleId :
 DDCF9ME

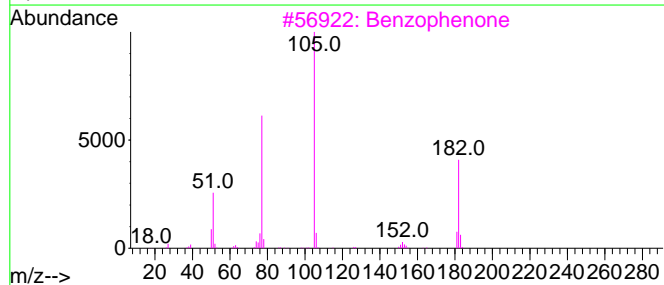
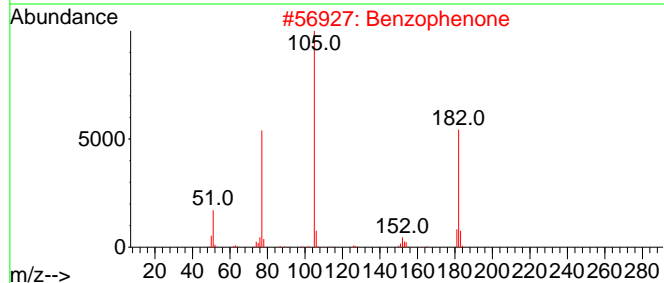
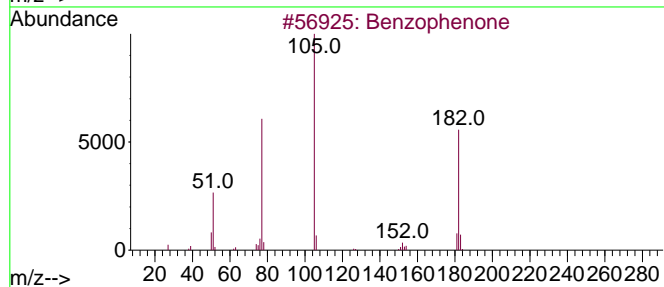
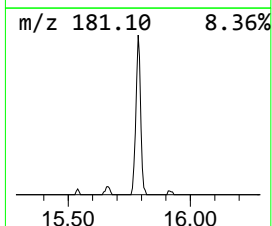
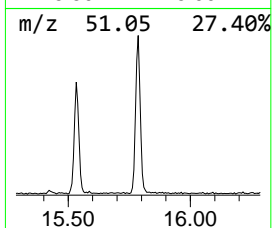
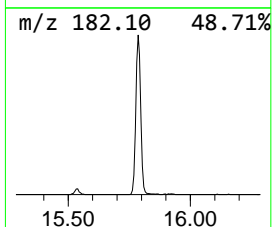
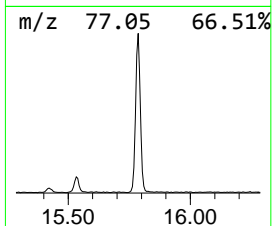
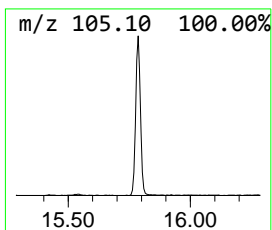
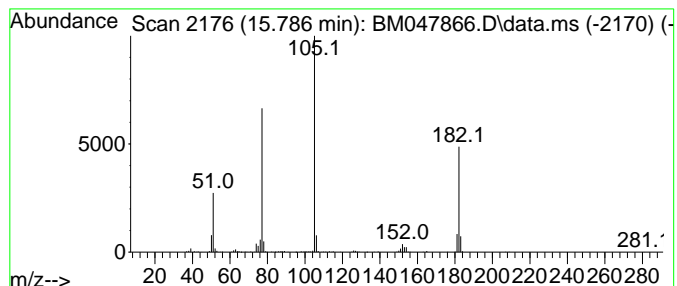
Quant Method : Z:\svoasrv\HPCHEM1\BNA_M\Methods\SFAM-EPA-BM092724.MA.M
 Quant Title : SVOA CALIBRATION

TIC Library : C:\Database\NIST20.L
 TIC Integration Parameters: LSCINT.P

 Peak Number 1 Benzophenone Concentration Rank 1

| R.T. | EstConc | Area | Relative to ISTD | R.T. |
|--------|------------|--------|------------------|--------|
| 15.786 | 4.49 ng/ul | 485104 | Acenaphthene-d10 | 14.433 |

| Hit# | of 5 | Tentative ID | MW | MolForm | CAS# | Qual |
|------|------|--------------|-----|---------|-------------|------|
| 1 | | Benzophenone | 182 | C13H10O | 000119-61-9 | 96 |
| 2 | | Benzophenone | 182 | C13H10O | 000119-61-9 | 95 |
| 3 | | Benzophenone | 182 | C13H10O | 000119-61-9 | 94 |
| 4 | | Benzophenone | 182 | C13H10O | 000119-61-9 | 94 |
| 5 | | Benzophenone | 182 | C13H10O | 000119-61-9 | 90 |



Data Path : Z:\svoasrv\HPCHEM1\BNA_M\Data\BM100324\
 Data File : BM047866.D
 Acq On : 05 Oct 2024 07:31
 Operator : RC/JU
 Sample : P4020-05ME
 Misc :
 ALS Vial : 22 Sample Multiplier: 1

Instrument :
 BNA_M
 ClientSampleId :
 DDCF9ME

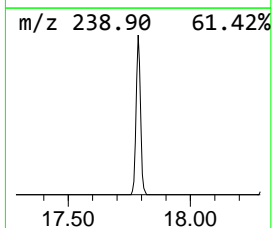
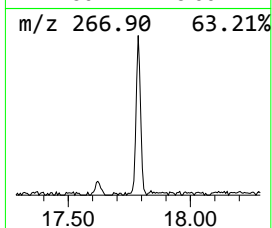
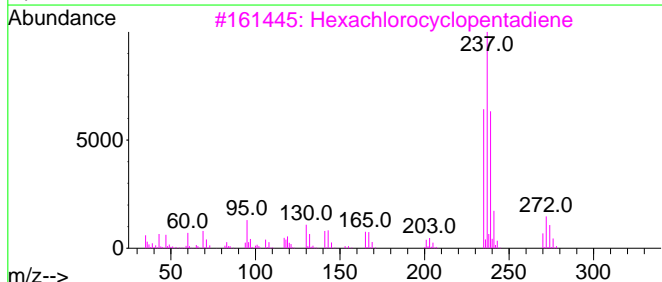
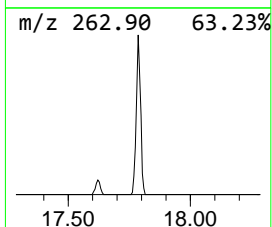
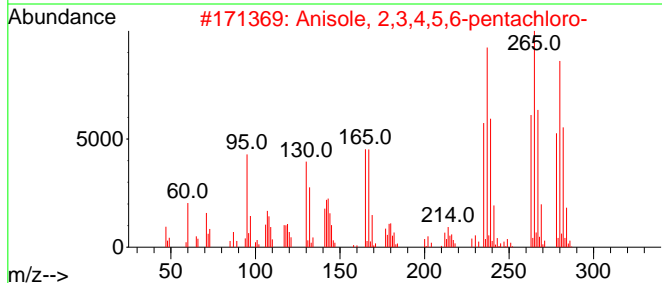
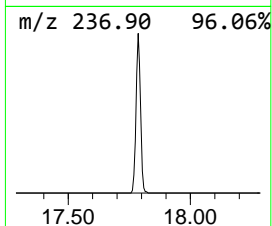
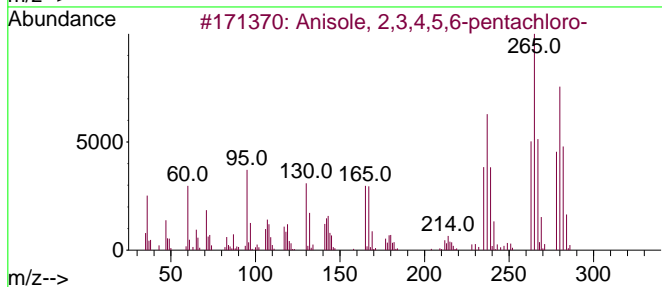
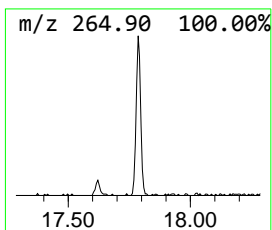
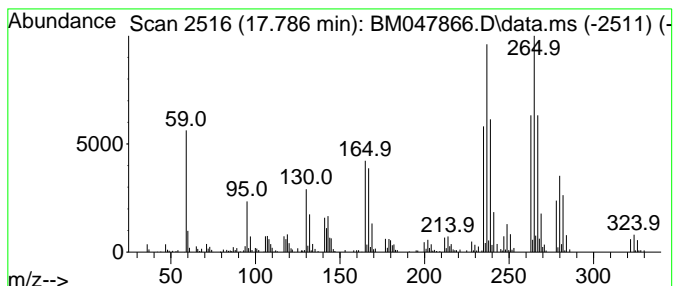
Quant Method : Z:\svoasrv\HPCHEM1\BNA_M\Methods\SFAM-EPA-BM092724.MA.M
 Quant Title : SVOA CALIBRATION

TIC Library : C:\Database\NIST20.L
 TIC Integration Parameters: LSCINT.P

 Peak Number 2 Anisole, 2,3,4,5,6-pentachl... Concentration Rank 4

| R.T. | EstConc | Area | Relative to ISTD | R.T. |
|--------|------------|--------|------------------|--------|
| 17.786 | 2.64 ng/ul | 333855 | Phenanthrene-d10 | 17.168 |

| Hit# | of | 5 | Tentative ID | MW | MolForm | CAS# | Qual |
|------|---------------------------------|-----|--------------|-------------|---------|------|------|
| 1 | Anisole, 2,3,4,5,6-pentachloro- | 278 | C7H3Cl5O | 001825-21-4 | 60 | | |
| 2 | Anisole, 2,3,4,5,6-pentachloro- | 278 | C7H3Cl5O | 001825-21-4 | 60 | | |
| 3 | Hexachlorocyclopentadiene | 270 | C5Cl6 | 000077-47-4 | 42 | | |
| 4 | 2,3,4,5,6-Pentachloroaniline | 263 | C6H2Cl5N | 000527-20-8 | 30 | | |
| 5 | 2,3,4,5,6-Pentachloroaniline | 263 | C6H2Cl5N | 000527-20-8 | 30 | | |



Data Path : Z:\svoasrv\HPCHEM1\BNA_M\Data\BM100324\
 Data File : BM047866.D
 Acq On : 05 Oct 2024 07:31
 Operator : RC/JU
 Sample : P4020-05ME
 Misc :
 ALS Vial : 22 Sample Multiplier: 1

Instrument :
 BNA_M
 ClientSampleId :
 DDCF9ME

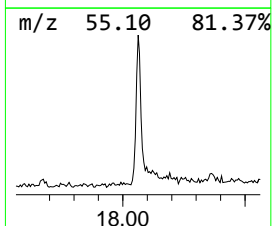
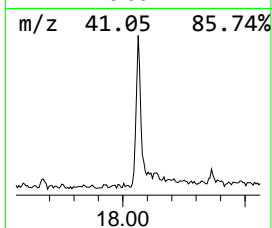
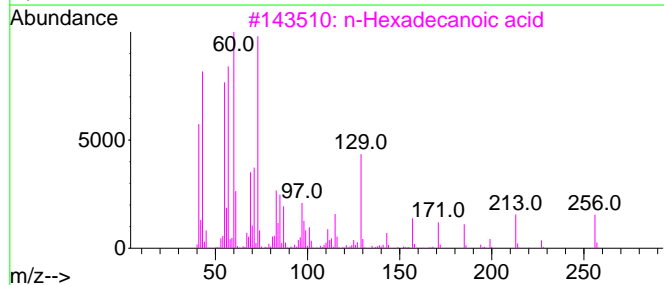
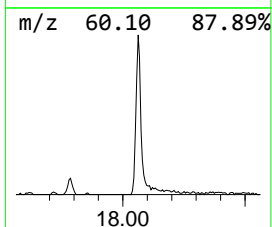
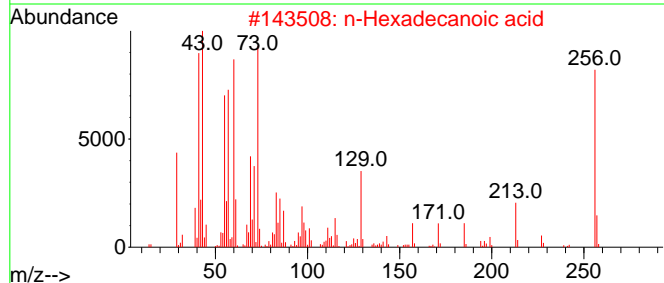
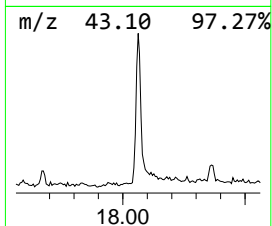
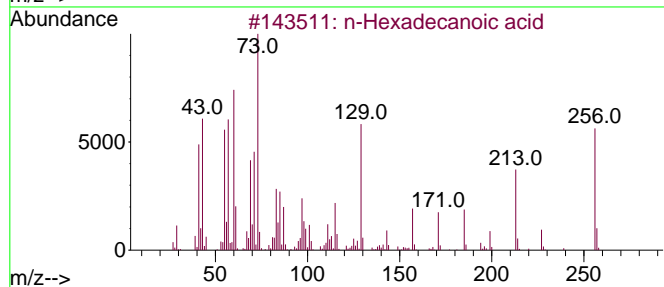
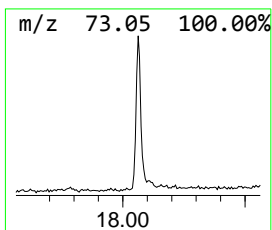
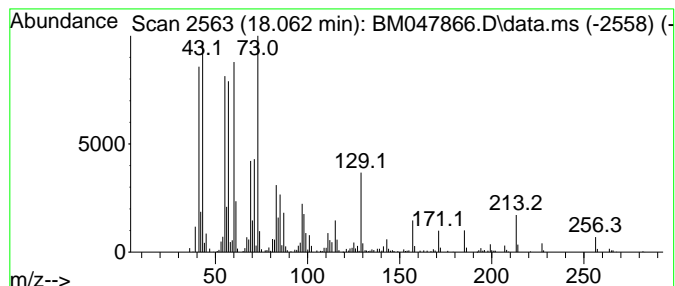
Quant Method : Z:\svoasrv\HPCHEM1\BNA_M\Methods\SFAM-EPA-BM092724.MA.M
 Quant Title : SVOA CALIBRATION

TIC Library : C:\Database\NIST20.L
 TIC Integration Parameters: LSCINT.P

 Peak Number 3 n-Hexadecanoic acid Concentration Rank 3

| R.T. | EstConc | Area | Relative to ISTD | R.T. |
|--------|------------|--------|------------------|--------|
| 18.063 | 3.26 ng/ul | 413041 | Phenanthrene-d10 | 17.168 |

| Hit# | of | Tentative ID | MW | MolForm | CAS# | Qual |
|------|----|---------------------|-----|----------|-------------|------|
| 1 | 5 | n-Hexadecanoic acid | 256 | C16H32O2 | 000057-10-3 | 98 |
| 2 | | n-Hexadecanoic acid | 256 | C16H32O2 | 000057-10-3 | 98 |
| 3 | | n-Hexadecanoic acid | 256 | C16H32O2 | 000057-10-3 | 98 |
| 4 | | n-Hexadecanoic acid | 256 | C16H32O2 | 000057-10-3 | 96 |
| 5 | | Pentadecanoic acid | 242 | C15H30O2 | 001002-84-2 | 83 |



Data Path : Z:\svoasrv\HPCHEM1\BNA_M\Data\BM100324\
 Data File : BM047866.D
 Acq On : 05 Oct 2024 07:31
 Operator : RC/JU
 Sample : P4020-05ME
 Misc :
 ALS Vial : 22 Sample Multiplier: 1

Instrument :
 BNA_M
 ClientSampleId :
 DDCF9ME

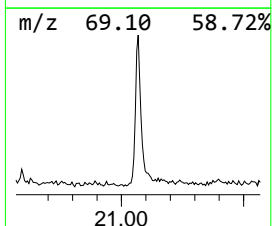
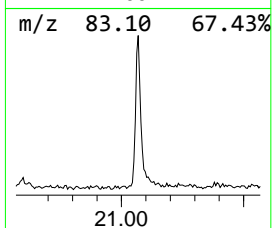
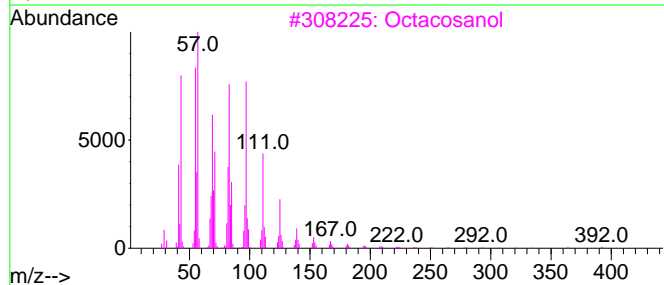
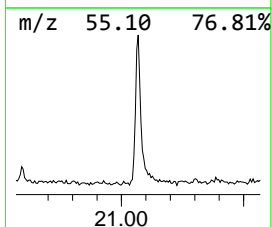
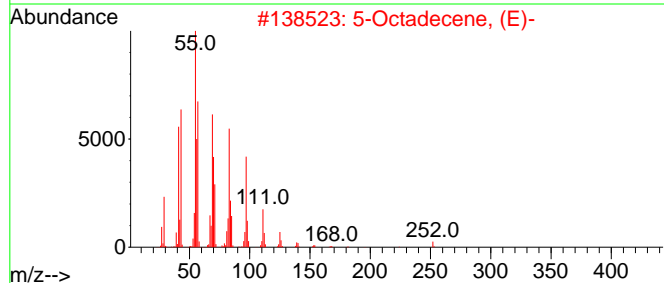
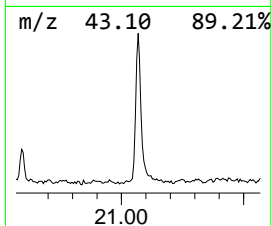
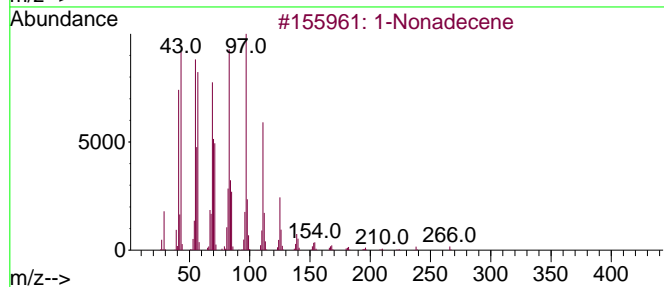
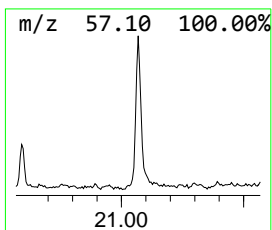
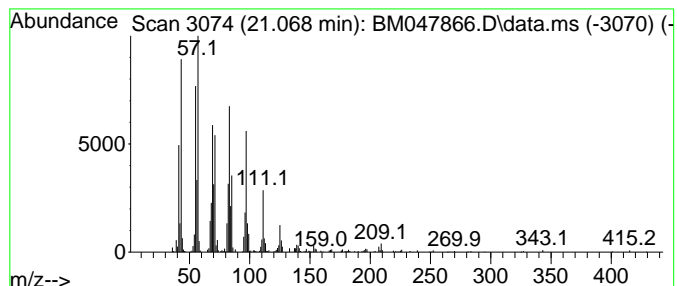
Quant Method : Z:\svoasrv\HPCHEM1\BNA_M\Methods\SFAM-EPA-BM092724.MA.M
 Quant Title : SVOA CALIBRATION

TIC Library : C:\Database\NIST20.L
 TIC Integration Parameters: LSCINT.P

 Peak Number 4 (DEL) Alkane: Straight-Chai... Concentration Rank 2

| R.T. | EstConc | Area | Relative to ISTD | R.T. |
|--------|------------|--------|------------------|--------|
| 21.068 | 3.83 ng/ul | 537544 | Chrysene-d12 | 21.392 |

| Hit# | of 5 | Tentative ID | MW | MolForm | CAS# | Qual |
|------|------|--------------------|-----|---------|-------------|------|
| 1 | | 1-Nonadecene | 266 | C19H38 | 018435-45-5 | 95 |
| 2 | | 5-Octadecene, (E)- | 252 | C18H36 | 007206-21-5 | 94 |
| 3 | | Octacosanol | 410 | C28H58O | 000557-61-9 | 94 |
| 4 | | Cyclopentadecane | 210 | C15H30 | 000295-48-7 | 93 |
| 5 | | 1-Hexacosanol | 382 | C26H54O | 000506-52-5 | 91 |



Data Path : Z:\svoasrv\HPCHEM1\BNA_M\Data\BM100324\
Data File : BM047866.D
Acq On : 05 Oct 2024 07:31
Operator : RC/JU
Sample : P4020-05ME
Misc :
ALS Vial : 22 Sample Multiplier: 1

Instrument :
BNA_M
ClientSampleId :
DDCF9ME

Quant Method : Z:\svoasrv\HPCHEM1\BNA_M\Methods\SFAM-EPA-BM092724.MA.M
Quant Title : SVOA CALIBRATION

TIC Library : C:\Database\NIST20.L
TIC Integration Parameters: LSCINT.P

| TIC Top Hit name | RT | EstConc | Units | Response | --Internal Standard-- | | | |
|--------------------|--------|---------|-------|----------|-----------------------|--------|---------|------|
| | | | | | # | RT | Resp | Conc |
| Benzophenone | 15.786 | 4.5 | ng/u1 | 485104 | 3 | 14.433 | 2162010 | 20.0 |
| Anisole, 2,3,4,... | 17.786 | 2.6 | ng/u1 | 333855 | 4 | 17.168 | 2533820 | 20.0 |
| n-Hexadecanoic ... | 18.063 | 3.3 | ng/u1 | 413041 | 4 | 17.168 | 2533820 | 20.0 |
| (DEL) Alkane: S... | 21.068 | 3.8 | ng/u1 | 537544 | 5 | 21.392 | 2808690 | 20.0 |