

Data Path : Z:\HPCHEM1\BNA M\DATA\BM100417\  
 Data File : BM011912.D  
 Acq On : 05 Oct 2017 04:20  
 Operator : SJ/JU  
 Sample : I5406-14  
 Misc :  
 ALS Vial : 29 Sample Multiplier: 1

Instrument :  
 BNA\_M  
 ClientSampleId :

Quant Time: Oct 05 07:18:57 2017  
 Quant Method : Z:\HPCHEM1\BNA M\METHODS\SOM-EPA-BM100317.M  
 Quant Title : SVOA CALIBRATION  
 QLast Update : Thu Oct 05 07:08:17 2017  
 Response via : Initial Calibration

Internal Standards	R.T.	QIon	Response	Conc	Units	Dev(Min)
1) 1,4-Dichlorobenzene-d4	7.87	152	439841	20.00	ng/ul	0.00
18) Naphthalene-d8	10.68	136	1980446	20.00	ng/ul	0.00
35) Acenaphthene-d10	14.52	164	1225646	20.00	ng/ul	0.00
61) Phenanthrene-d10	17.26	188	2706333	20.00	ng/ul	0.00
75) Chrysene-d12	21.43	240	2093131	20.00	ng/ul	0.00
83) Perylene-d12	23.76	264	1886039	20.00	ng/ul	0.00

## System Monitoring Compounds

3) 1,4-Dioxane-d8	3.29	96	31056	3.34	ng/uL	0.00
5) Phenol-d5	7.03	99	746437	19.72	ng/ul	0.00
7) Bis-(2-Chloroethyl)ether-d	7.20	67	463899	20.71	ng/ul	0.00
9) 2-Chlorophenol-d4	7.40	132	656310	21.62	ng/ul	0.00
13) 4-Methylphenol-d8	8.57	113	564203	17.25	ng/ul	0.00
19) Nitrobenzene-d5	9.04	128	328410	23.29	ng/ul	0.00
22) 2-Nitrophenol-d4	9.76	143	377815	23.78	ng/ul	0.00
26) 2,4-Dichlorophenol-d3	10.30	165	694518	21.63	ng/ul	0.00
29) 4-Chloroaniline-d4	10.82	131	736328	21.02	ng/ul	0.00
43) Dimethylphthalate-d6	13.92	166	2320361	21.84	ng/ul	0.00
46) Acenaphthylene-d8	14.21	160	2741982	21.97	ng/ul	0.00
51) 4-Nitrophenol-d4	14.71	143	289174	15.58	ng/ul	0.00
57) Fluorene-d10	15.51	176	1982317	21.14	ng/ul	0.00
62) 4,6-Dinitro-2-methylphenol	15.63	200	217585	11.95	ng/ul	0.00
70) Anthracene-d10	17.36	188	2948259	22.11	ng/ul	0.00
76) Pyrene-d10	19.65	212	2974837	31.51	ng/ul	0.00
87) Benzo(a)pyrene-d12	23.61	264	1901522	20.96	ng/ul	0.01

## Target Compounds

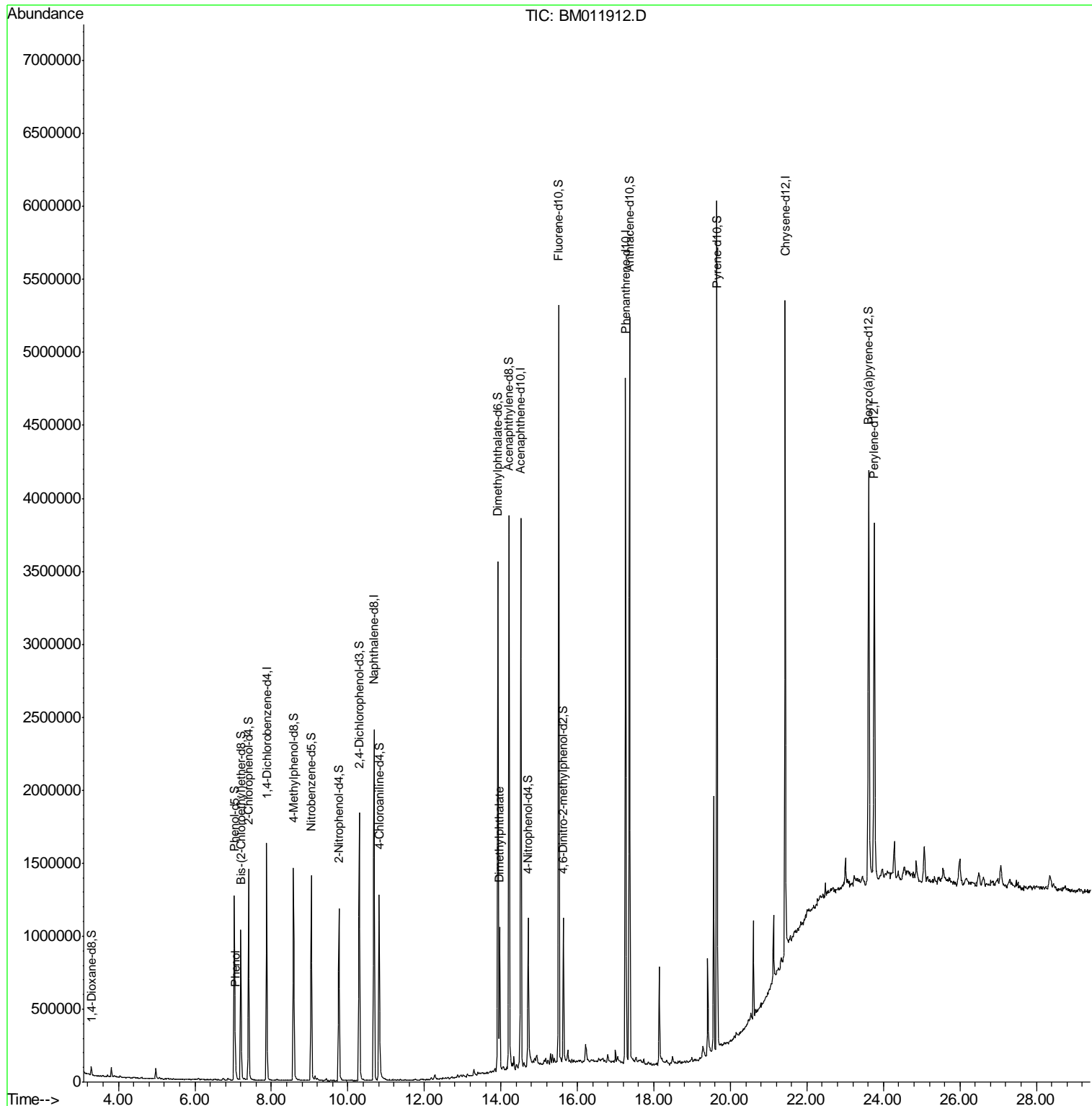
				Ovalue	
6) Phenol	7.06	94	46795	1.250	ng/ul# 86
44) Dimethylphthalate	13.97	163	599508	5.866	ng/ul 100

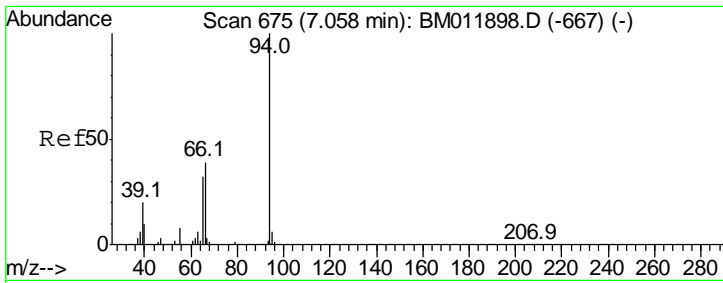
(#) = qualifier out of range (m) = manual integration (+) = signals summed

Data Path : Z:\HPCHEM1\BNA M\DATA\BM100417\  
 Data File : BM011912.D  
 Acq On : 05 Oct 2017 04:20  
 Operator : SJ/JU  
 Sample : I5406-14  
 Misc :  
 ALS Vial : 29 Sample Multiplier: 1

Instrument :  
 BNA\_M  
 ClientSampled :

Quant Time: Oct 05 07:18:57 2017  
 Quant Method : Z:\HPCHEM1\BNA M\METHODS\SOM-EPA-BM100317.M  
 Quant Title : SVOA CALIBRATION  
 QLast Update : Thu Oct 05 07:08:17 2017  
 Response via : Initial Calibration

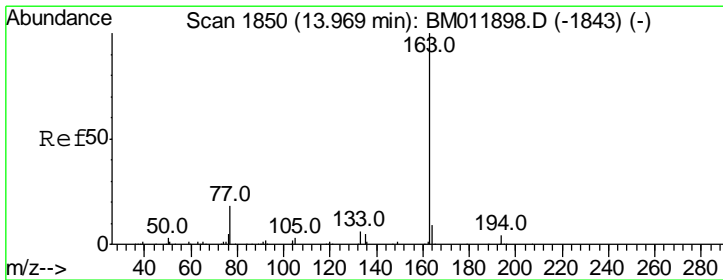
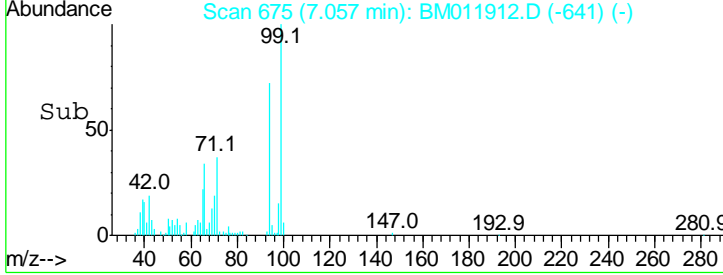
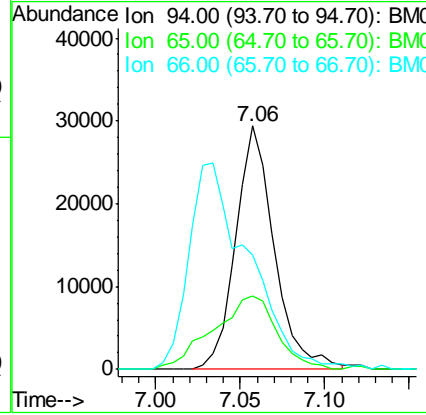
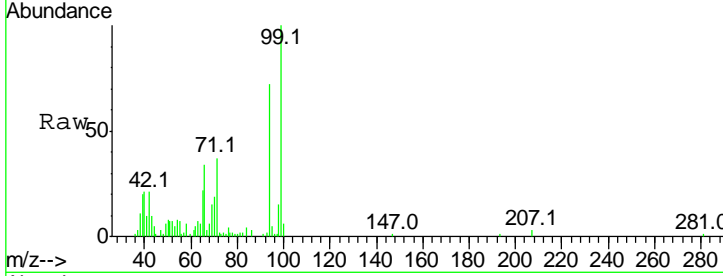




#6  
 Phenol  
 Concen: 1.250 ng/ul  
 RT: 7.06 min Scan# 675  
 Delta R.T. -0.00 min  
 Lab File: BM011912.D  
 Acq: 05 Oct 2017 04:20

Instrument :  
 BNA\_M  
 ClientSampled :

Tgt Ion	Resp	Lower	Upper
94	100		
65	30.1	28.2	42.4
66	46.7	47.2	70.8#



#44  
 Dimethylphthalate  
 Concen: 5.866 ng/ul  
 RT: 13.97 min Scan# 1850  
 Delta R.T. -0.00 min  
 Lab File: BM011912.D  
 Acq: 05 Oct 2017 04:20

Tgt Ion	Resp	Lower	Upper
163	100		
194	4.2	3.5	5.3
164	10.4	8.2	12.4

