

Data Path : Z:\svoasrv\HPCHEM1\BNA_M\Data\BM101121\
 Data File : BM032418.D
 Acq On : 11 Oct 2021 13:20
 Operator : CG/JU
 Sample : M4029-01
 Misc :
 ALS Vial : 6 Sample Multiplier: 1

Instrument :
 BNA_M
 ClientSampled :
 C00Q4

Quant Time: Oct 11 13:51:12 2021
 Quant Method : Z:\SVOASRV\HPCHEM1\BNA_M\METHODS\SFAM-EPA-BM100521.M
 Quant Title : SVOA CALIBRATION
 QLast Update : Mon Oct 11 11:06:33 2021
 Response via : Initial Calibration

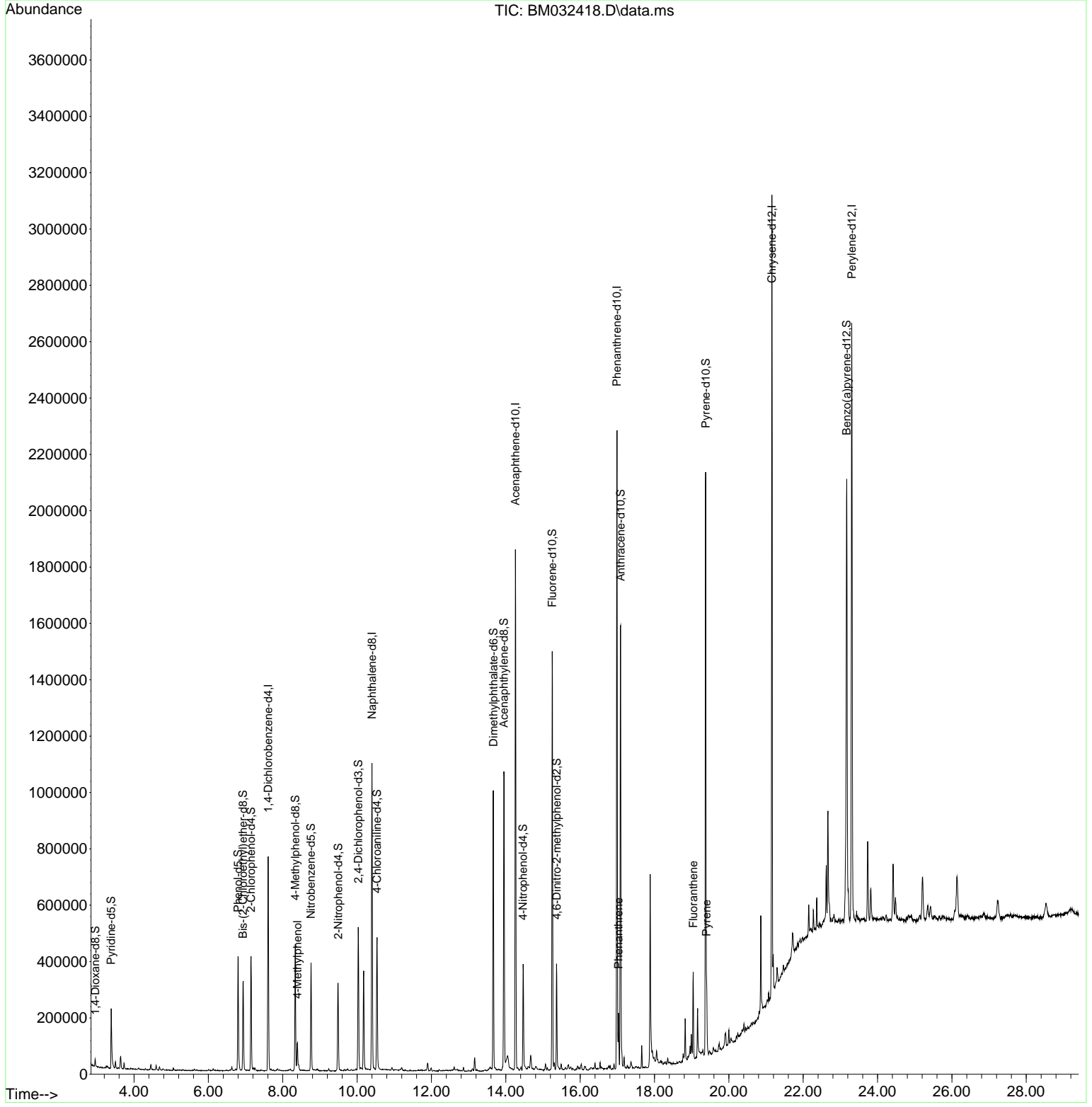
Compound	R.T.	QIon	Response	Conc	Units	Dev(Min)
Internal Standards						
1) 1,4-Dichlorobenzene-d4	7.607	152	197330	20.000	ng/ul	0.00
20) Naphthalene-d8	10.401	136	871843	20.000	ng/ul	0.00
38) Acenaphthene-d10	14.260	164	589888	20.000	ng/ul	0.00
64) Phenanthrene-d10	16.989	188	1247941	20.000	ng/ul	0.00
79) Chrysene-d12	21.160	240	1253326	20.000	ng/ul	0.00
88) Perylene-d12	23.306	264	1318996	20.000	ng/ul	0.00
System Monitoring Compounds						
3) 1,4-Dioxane-d8	2.955	96	12909	2.623	ng/uL	0.00
4) Pyridine-d5	3.384	84	121842	8.763	ng/ul	0.00
7) Phenol-d5	6.796	99	225652	13.448	ng/ul	-0.01
9) Bis-(2-Chloroethyl)eth...	6.931	67	133799	13.887	ng/ul	-0.01
11) 2-Chlorophenol-d4	7.149	132	184566	14.406	ng/ul	0.00
15) 4-Methylphenol-d8	8.337	113	159270	11.752	ng/ul	-0.01
21) Nitrobenzene-d5	8.760	128	89978	14.627	ng/ul	-0.01
24) 2-Nitrophenol-d4	9.490	143	99430	14.996	ng/ul	0.00
28) 2,4-Dichlorophenol-d3	10.031	165	179049	13.565	ng/ul	0.00
31) 4-Chloroaniline-d4	10.537	131	244463	12.556	ng/ul	0.00
46) Dimethylphthalate-d6	13.666	166	649472	15.909	ng/ul	0.00
49) Acenaphthylene-d8	13.948	160	742952	14.981	ng/ul	0.00
54) 4-Nitrophenol-d4	14.466	143	87204	10.877	ng/ul	-0.01
60) Fluorene-d10	15.248	176	547634	15.817	ng/ul	0.00
65) 4,6-Dinitro-2-methylph...	15.366	200	70981	9.980	ng/ul	0.00
73) Anthracene-d10	17.089	188	854137	15.724	ng/ul	0.00
81) Pyrene-d10	19.377	212	1027048	16.289	ng/ul	0.00
92) Benzo(a)pyrene-d12	23.171	264	1005982	15.230	ng/ul	0.00
Target Compounds						
18) 4-Methylphenol	8.396	108	33587	2.458	ng/ul#	77
72) Phenanthrene	17.030	178	102041	1.584	ng/ul	99
80) Fluoranthene	19.042	202	170699	2.194	ng/ul	99
82) Pyrene	19.401	202	139636	1.747	ng/ul	97

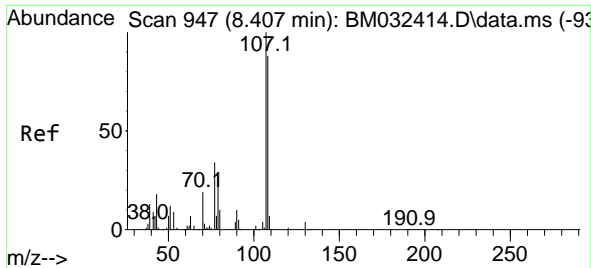
(#) = qualifier out of range (m) = manual integration (+) = signals summed

Data Path : Z:\svoasrv\HPCHEM1\BNA_M\Data\BM101121\
 Data File : BM032418.D
 Acq On : 11 Oct 2021 13:20
 Operator : CG/JU
 Sample : M4029-01
 Misc :
 ALS Vial : 6 Sample Multiplier: 1

Instrument :
 BNA_M
 ClientSampleId :
 C00Q4

Quant Time: Oct 11 13:51:12 2021
 Quant Method : Z:\SVOASRV\HPCHEM1\BNA_M\METHODS\SFAM-EPA-BM100521.M
 Quant Title : SVOA CALIBRATION
 QLast Update : Mon Oct 11 11:06:33 2021
 Response via : Initial Calibration

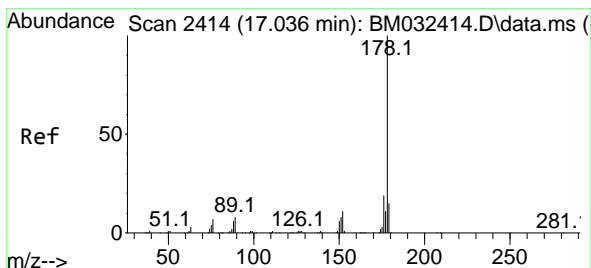
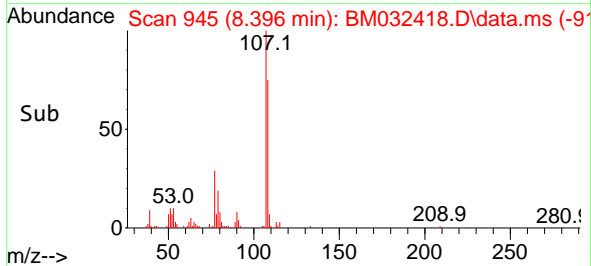
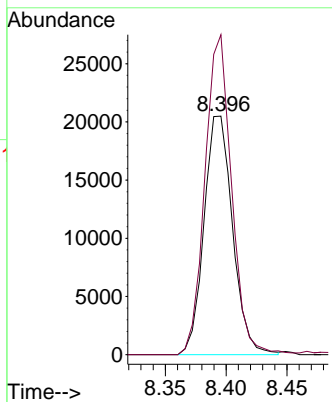
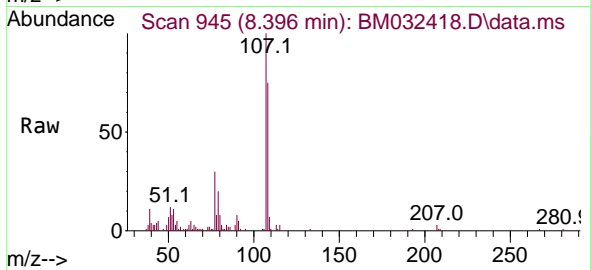




#18
 4-Methylphenol
 Concen: 2.458 ng/ul
 RT: 8.396 min Scan# 945
 Delta R.T. -0.012 min
 Lab File: BM032418.D
 Acq: 11 Oct 2021 13:20

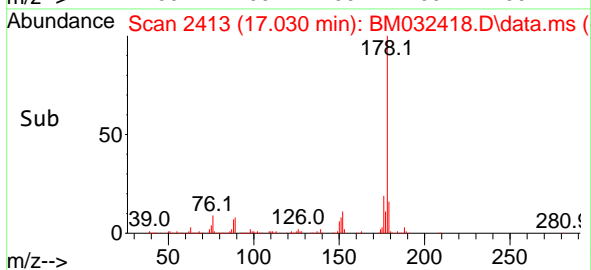
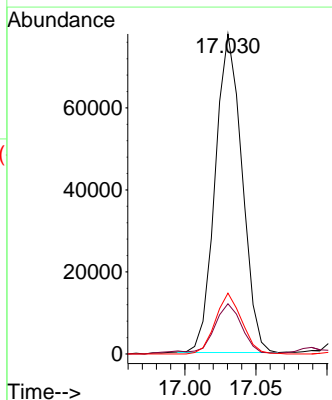
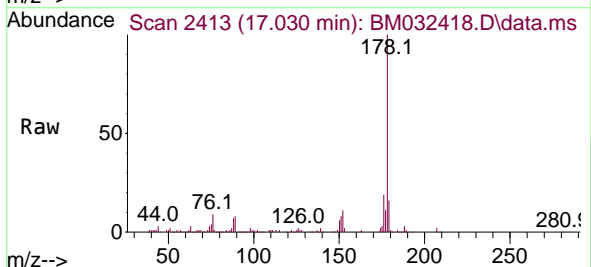
Instrument :
 BNA_M
 ClientSampled :
 C00Q4

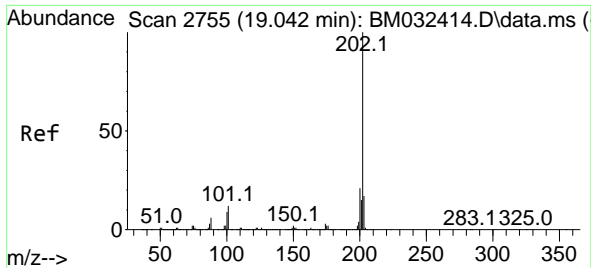
Tgt Ion:108 Resp: 33587
 Ion Ratio Lower Upper
 108 100
 107 134.1 87.9 131.9#



#72
 Phenanthrene
 Concen: 1.584 ng/ul
 RT: 17.030 min Scan# 2413
 Delta R.T. -0.006 min
 Lab File: BM032418.D
 Acq: 11 Oct 2021 13:20

Tgt Ion:178 Resp: 102041
 Ion Ratio Lower Upper
 178 100
 179 15.7 12.2 18.2
 176 19.0 15.4 23.0

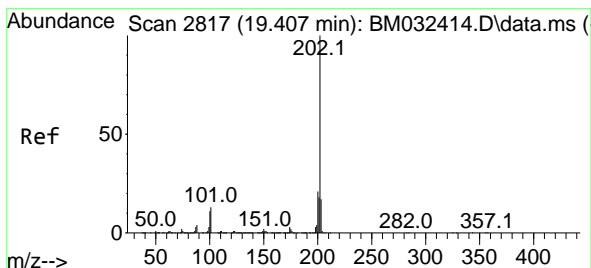
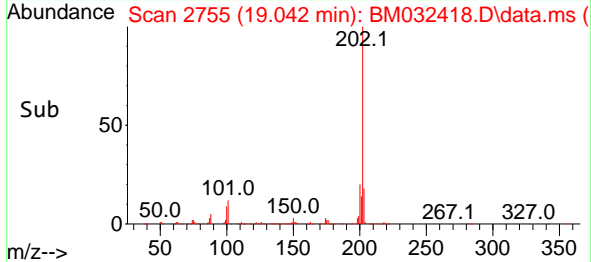
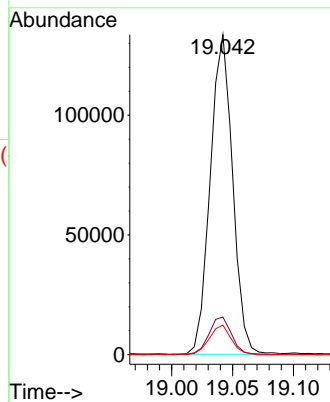
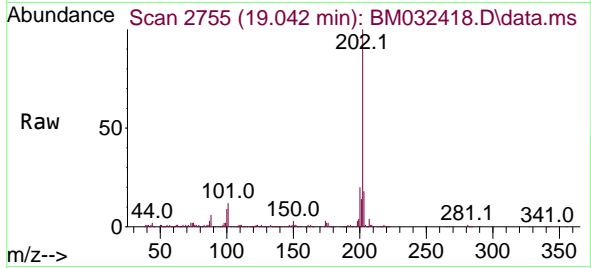




#80
 Fluoranthene
 Concen: 2.194 ng/u1
 RT: 19.042 min Scan# 2755
 Delta R.T. 0.000 min
 Lab File: BM032418.D
 Acq: 11 Oct 2021 13:20

Instrument :
 BNA_M
 ClientSampled :
 C00Q4

Tgt Ion	Resp	Lower	Upper
202	170699		
101	11.8	9.1	13.7
100	9.3	7.0	10.4



#82
 Pyrene
 Concen: 1.747 ng/u1
 RT: 19.401 min Scan# 2816
 Delta R.T. -0.006 min
 Lab File: BM032418.D
 Acq: 11 Oct 2021 13:20

Tgt Ion	Resp	Lower	Upper
202	139636		
101	13.9	10.3	15.5
100	11.5	8.1	12.1

