

Data Path : Z:\SVOASRV\HPCHEM1\BNA_M\DATA\BM101218\
 Data File : BM017135.D
 Acq On : 12 Oct 2018 18:07
 Operator : MJ/SJ
 Sample : J5362-04
 Misc :
 ALS Vial : 5 Sample Multiplier: 1

Instrument :
 BNA_M
 ClientSampleId :
 COAL5

Integration Parameters: LSCINT.P

Integrator: RTE
 Smoothing : OFF Filtering: 5
 Sampling : 1 Min Area: 0.1 % of largest Peak
 Start Thrs: 0.2 Max Peaks: 100
 Stop Thrs : 0 Peak Location: TOP

If leading or trailing edge < 100 prefer < Baseline drop else tangent >
 Peak separation: 5

Method : Z:\SVOASRV\HPCHEM1\BNA_M\METHODS\SOM-EPA-BM100418MA.M
 Title : SVOA CALIBRATION

Signal : TIC

peak #	R.T. min	first scan	max scan	last scan	PK TY	peak height	corr. area	corr. % max.	% of total
1	6.863	654	659	665	rVB	282873	442024	6.76%	0.711%
2	7.034	682	688	696	rVB	923146	1384283	21.18%	2.227%
3	7.222	715	720	735	rVB	1024646	1635889	25.03%	2.632%
4	7.687	793	799	807	rVB	866433	1370219	20.97%	2.205%
5	8.392	913	919	931	rVB	877756	1356714	20.76%	2.183%
6	8.839	988	995	1004	rVB	1262935	2020913	30.92%	3.252%
7	9.557	1110	1117	1130	rVB	977515	1593140	24.38%	2.563%
8	10.086	1200	1207	1222	rBV	1592468	2619245	40.08%	4.214%
9	10.463	1264	1271	1279	rBV	1314502	2204023	33.72%	3.546%
10	10.610	1290	1296	1300	rBV5	7746	12751	0.20%	0.021%
11	11.010	1359	1364	1370	rBV2	13404	23817	0.36%	0.038%
12	11.069	1370	1374	1379	rVV4	14287	23273	0.36%	0.037%
13	12.057	1537	1542	1548	rVB2	27499	42638	0.65%	0.069%
14	12.274	1573	1579	1584	rBV4	3697	7113	0.11%	0.011%
15	13.745	1822	1829	1840	rBV	2942568	4001367	61.23%	6.438%
16	14.021	1869	1876	1885	rBV	3443569	4987440	76.32%	8.025%
17	14.327	1922	1928	1942	rVB2	2007502	2985953	45.69%	4.804%
18	14.539	1958	1964	1981	rVB	145613	241341	3.69%	0.388%
19	15.327	2091	2098	2109	rBV	4536650	6340457	97.02%	10.201%
20	15.451	2113	2119	2134	rVV	1039226	1307346	20.00%	2.103%
21	15.562	2134	2138	2151	rVB	46225	65300	1.00%	0.105%
22	16.074	2220	2225	2229	rBV3	4255	7130	0.11%	0.011%
23	16.868	2354	2360	2364	rBV2	9382	16889	0.26%	0.027%
24	17.080	2389	2396	2406	rBV2	2377269	3406535	52.13%	5.481%
25	17.180	2406	2413	2425	rVV	4488349	6521877	99.79%	10.493%
26	17.980	2545	2549	2553	rBV3	17146	23059	0.35%	0.037%
27	19.109	2737	2741	2745	rVB	52360	63429	0.97%	0.102%
28	19.268	2765	2768	2770	rBV4	12284	12732	0.19%	0.020%
29	19.362	2781	2784	2789	rVB	35801	45932	0.70%	0.074%
30	19.474	2797	2803	2811	rBV	4681690	6535298	100.00%	10.515%
31	21.268	3103	3108	3114	rBV	2363198	2893044	44.27%	4.655%
32	23.350	3456	3462	3476	rVB	2747173	5237362	80.14%	8.427%
33	23.491	3480	3486	3498	rVB2	1405801	2723931	41.68%	4.383%

Data Path : Z:\SVOASRV\HPCHEM1\BNA_M\DATA\BM101218\
Data File : BM017135.D
Acq On : 12 Oct 2018 18:07
Operator : MJ/SJ
Sample : J5362-04
Misc :
ALS Vial : 5 Sample Multiplier: 1

Instrument :
BNA_M
ClientSampleId :
C0AL5

Integration Parameters: LSCINT.P
Integrator: RTE
Smoothing : OFF Filtering: 5
Sampling : 1 Min Area: 0.1 % of largest Peak
Start Thrs: 0.2 Max Peaks: 100
Stop Thrs : 0 Peak Location: TOP

If leading or trailing edge < 100 prefer < Baseline drop else tangent >
Peak separation: 5

Method : Z:\SVOASRV\HPCHEM1\BNA_M\METHODS\SOM-EPA-BM100418MA.M
Title : SVOA CALIBRATION

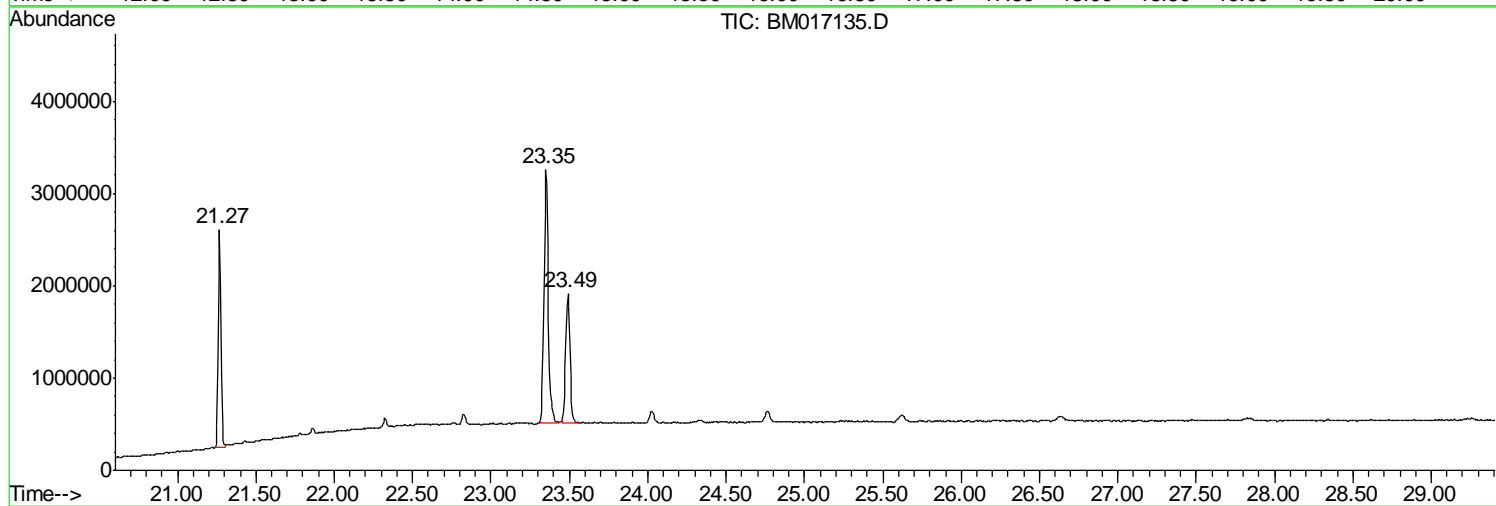
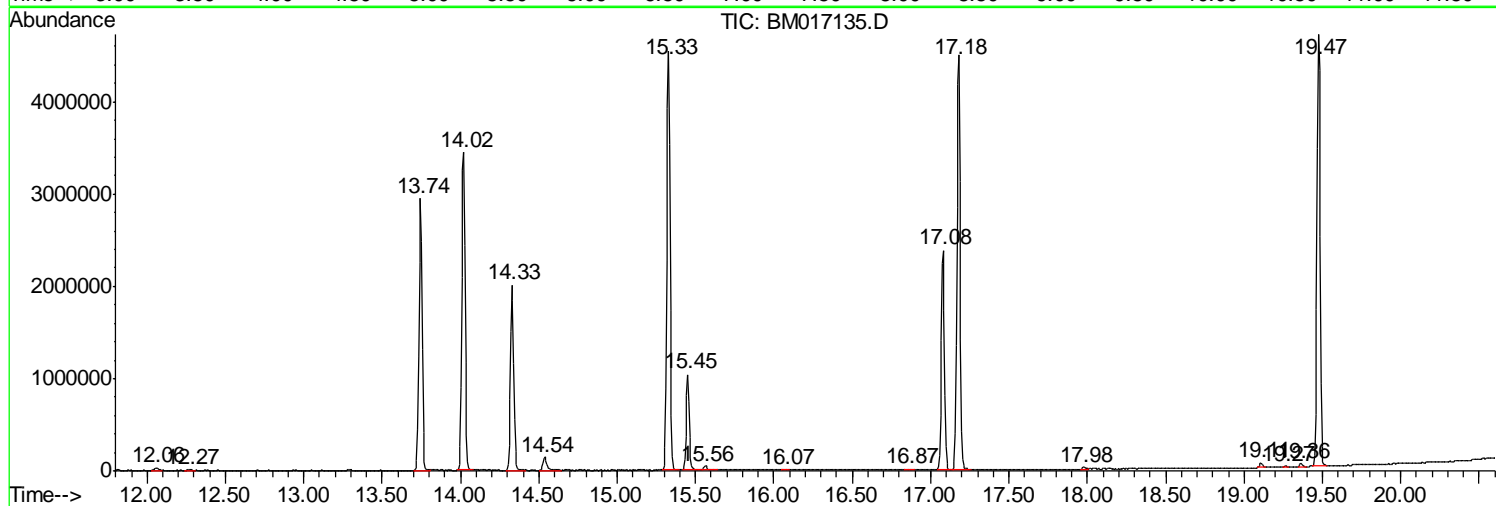
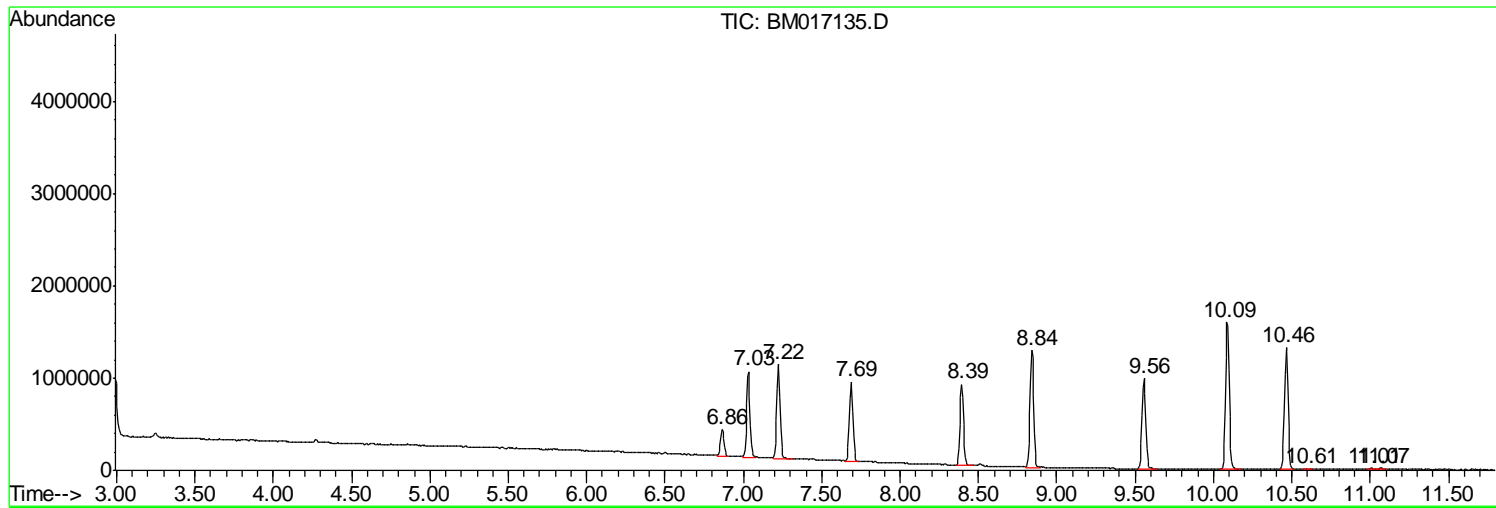
Sum of corrected areas: 62152464

Data Path : Z:\SVOASRV\HPCHEM1\BNA_M\DATA\BM101218\
Data File : BM017135.D
Acq On : 12 Oct 2018 18:07
Operator : MJ/SJ
Sample : J5362-04
Misc :
ALS Vial : 5 Sample Multiplier: 1

Instrument :
BNA_M
ClientSampleId :
COAL5

Quant Method : Z:\SVOASRV\HPCHEM1\BNA_M\METHODS\SOM-EPA-BM100418MA.M
Quant Title : SVOA CALIBRATION

TIC Library : C:\DATABASE\NIST02.L
TIC Integration Parameters: LSCINT.P



Data Path : Z:\SVOASRV\HPCHEM1\BNA_M\DATA\BM101218\
Data File : BM017135.D
Acq On : 12 Oct 2018 18:07
Operator : MJ/SJ
Sample : J5362-04
Misc :
ALS Vial : 5 Sample Multiplier: 1

Instrument :
BNA_M
ClientSampleId :
C0AL5

Quant Method : Z:\SVOASRV\HPCHEM1\BNA_M\METHODS\SOM-EPA-BM100418MA.M
Quant Title : SVOA CALIBRATION

TIC Library : C:\DATABASE\NIST02.L
TIC Integration Parameters: LSCINT.P

No Library Search Compounds Detected

Data Path : Z:\SVOASRV\HPCHEM1\BNA_M\DATA\BM101218\
Data File : BM017135.D
Acq On : 12 Oct 2018 18:07
Operator : MJ/SJ
Sample : J5362-04
Misc :
ALS Vial : 5 Sample Multiplier: 1

Instrument :
BNA_M
ClientSampleId :
C0AL5

Quant Method : Z:\SVOASRV\HPCHEM1\BNA_M\METHODS\SOM-EPA-BM100418MA.M
Quant Title : SVOA CALIBRATION

TIC Library : C:\DATABASE\NIST02.L
TIC Integration Parameters: LSCINT.P

TIC Top Hit name	RT	EstConc	Units	Response	--Internal Standard--			
					#	RT	Resp	Conc
