

Data Path : Z:\HPCHEM1\BNA M\DATA\BM101315\  
 Data File : BM002891.D  
 Acq On : 13 Oct 2015 17:57  
 Operator : UM/IZ  
 Sample : SSTDICCO.1  
 Misc :  
 ALS Vial : 2 Sample Multiplier: 1

Instrument :  
 BNA\_M  
 ClientSampleId :  
 SSTDICCO.1

Quant Time: Oct 14 11:11:02 2015  
 Quant Method : Z:\HPCHEM1\BNA M\METHODS\SIM-ACID-BM0101315.M  
 Quant Title : ASP BNA STANDARDS FOR 5 POINT CALIBRATION  
 QLast Update : Wed Oct 14 11:09:27 2015  
 Response via : Initial Calibration

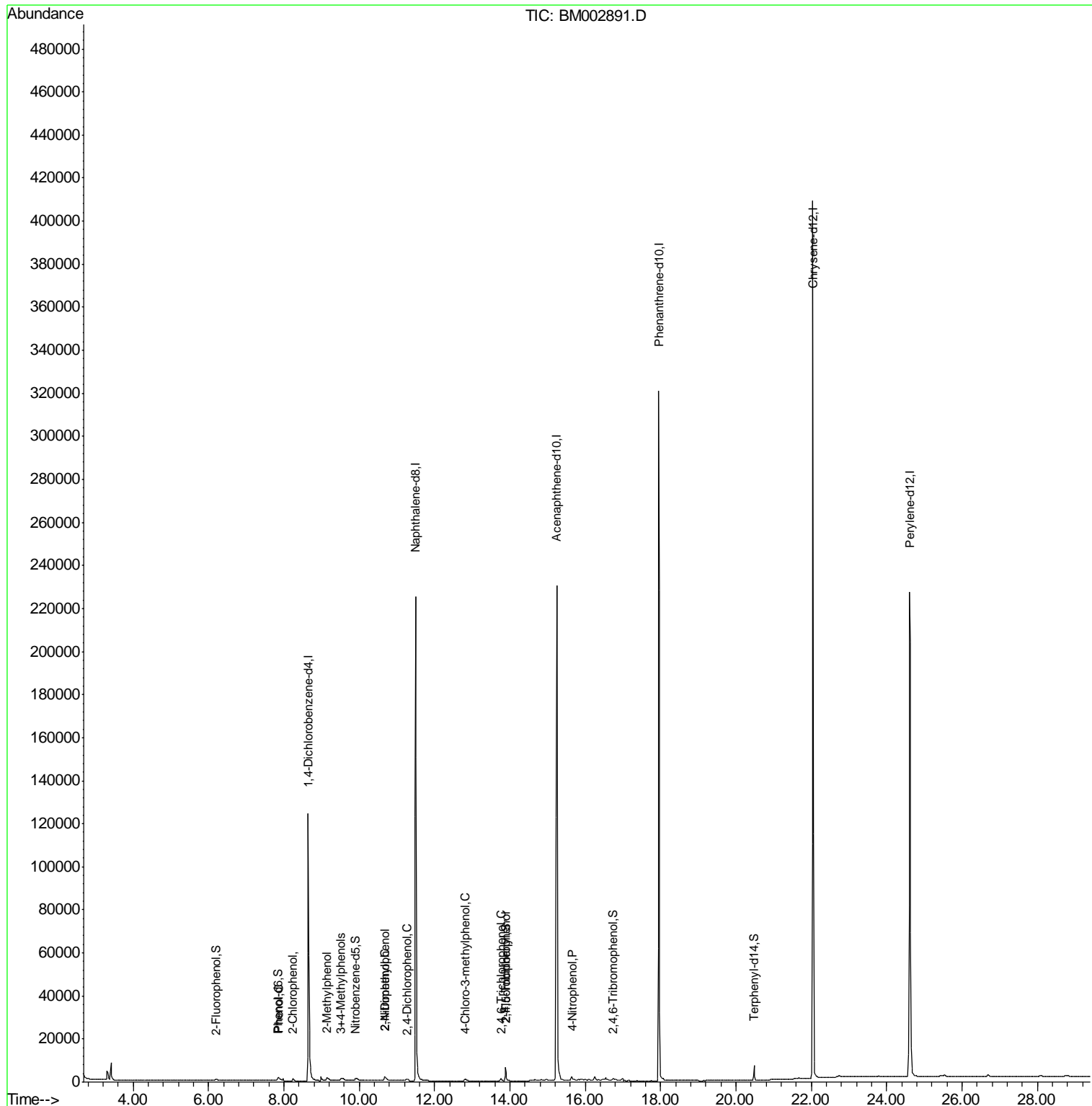
Internal Standards	R.T.	QIon	Response	Conc	Units	Dev(Min)
1) 1,4-Dichlorobenzene-d4	8.66	152	85503	5.00	ng	0.00
8) Naphthalene-d8	11.50	136	351739	5.00	ng	0.00
14) Acenaphthene-d10	15.25	164	189278	5.00	ng	0.00
21) Phenanthrene-d10	17.95	188	438365	5.00	ng	0.00
24) Chrysene-d12	22.04	240	401662	5.00	ng	0.00
26) Perylene-d12	24.61	264	380150	5.00	ng	0.00
System Monitoring Compounds						
2) 2-Fluorophenol	6.20	112	1294	0.09	ng	0.06
3) Phenol-d6	7.83	99	2865	0.15	ng	0.05
9) Nitrobenzene-d5	9.90	82	3326	0.17	ng	0.04
15) 2,4,6-Tribromophenol	16.74	330	658	0.09	ng	0.02
18) 2-Fluorobiphenyl	13.88	172	6975	0.12	ng	0.01
25) Terphenyl-d14	20.48	244	6875	0.13	ng	0.00
Target Compounds						
4) 2-Chlorophenol	8.24	128	2234	0.17	ng	# 78
5) Phenol	7.86	94	3257	0.17	ng	70
6) 2-Methylphenol	9.15	107	2153	0.20	ng	# 66
7) 3+4-Methylphenols	9.51	107	2138	0.15	ng	# 45
10) 2-Nitrophenol	10.68	139	859	0.11	ng	# 33
11) 2,4-Dimethylphenol	10.68	122	2005	0.12	ng	89
12) 2,4-Dichlorophenol	11.26	162	1164	0.07	ng	# 83
13) 4-Chloro-3-methylphenol	12.81	107	1830	0.10	ng	# 71
16) 2,4,6-Trichlorophenol	13.76	196	1193	0.09	ng	# 64
17) 2,4,5-Trichlorophenol	13.88	196	1154	0.08	ng	# 95
20) 4-Nitrophenol	15.65	139	3761	0.37	ng	# 11

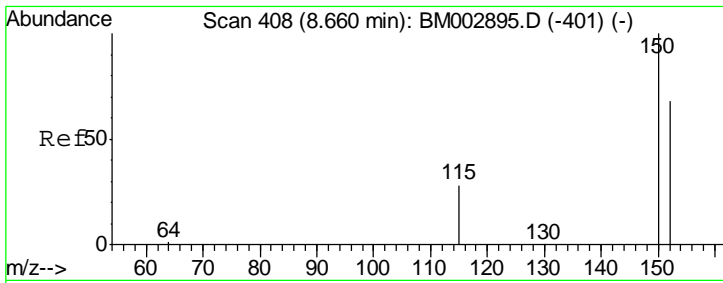
(#) = qualifier out of range (m) = manual integration (+) = signals summed

Data Path : Z:\HPCHEM1\BNA M\DATA\BM101315\  
 Data File : BM002891.D  
 Acq On : 13 Oct 2015 17:57  
 Operator : UM/IZ  
 Sample : SSTDICC0.1  
 Misc :  
 ALS Vial : 2 Sample Multiplier: 1

Instrument :  
 BNA\_M  
 ClientSampleId :  
 SSTDICC0.1

Quant Time: Oct 14 11:11:02 2015  
 Quant Method : Z:\HPCHEM1\BNA M\METHODS\SIM-ACID-BM0101315.M  
 Quant Title : ASP BNA STANDARDS FOR 5 POINT CALIBRATION  
 QLast Update : Wed Oct 14 11:09:27 2015  
 Response via : Initial Calibration



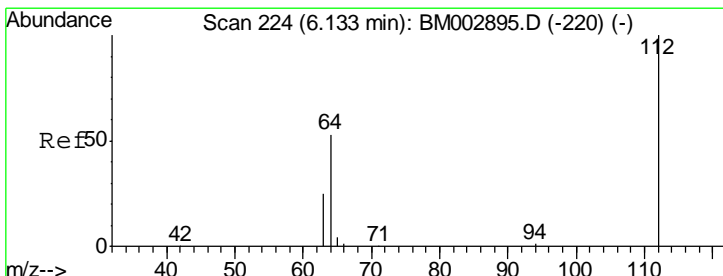
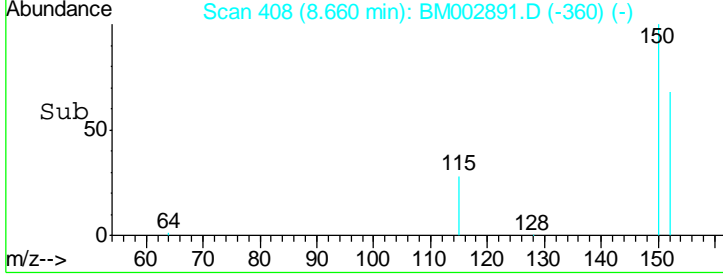
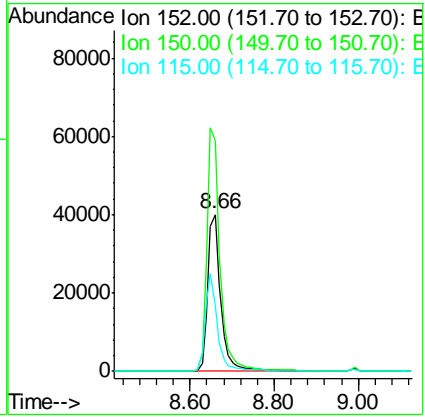
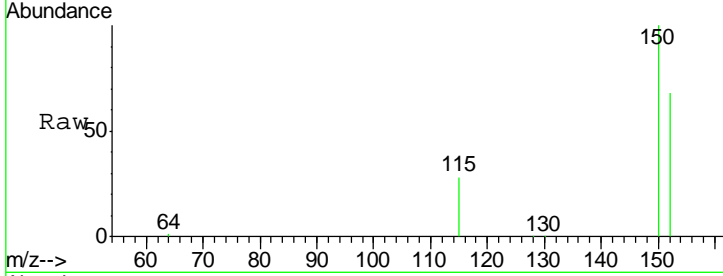


#1  
 1,4-Dichlorobenzene-d4  
 Concen: 5.00 ng  
 RT: 8.66 min Scan# 408  
 Delta R.T. -0.00 min  
 Lab File: BM002891.D  
 Acq: 13 Oct 2015 17:57

**Instrument :**  
 BNA\_M  
**ClientSampled :**  
 SSTDICC0.1

Tgt Ion:152 Resp: 85503

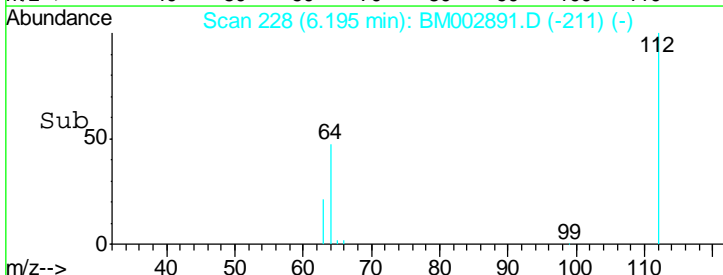
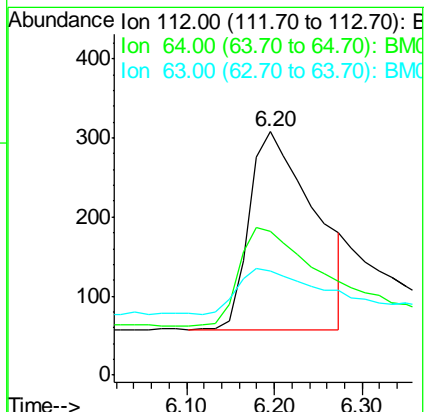
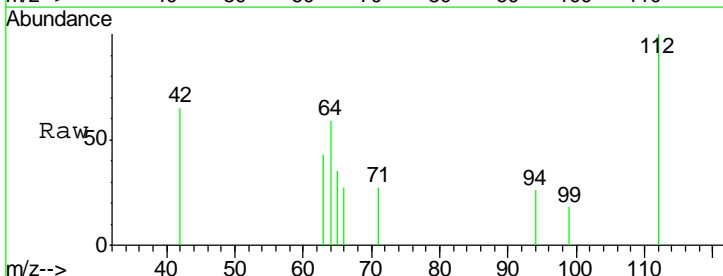
Ion	Ratio	Lower	Upper
152	100		
150	147.2	116.3	174.5
115	41.9	31.9	47.9

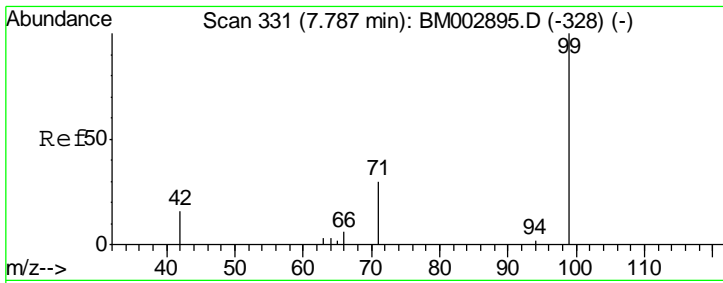


#2  
 2-Fluorophenol  
 Concen: 0.09 ng  
 RT: 6.20 min Scan# 228  
 Delta R.T. 0.06 min  
 Lab File: BM002891.D  
 Acq: 13 Oct 2015 17:57

Tgt Ion:112 Resp: 1294

Ion	Ratio	Lower	Upper
112	100		
64	59.1	49.3	73.9
63	42.5	26.2	39.4

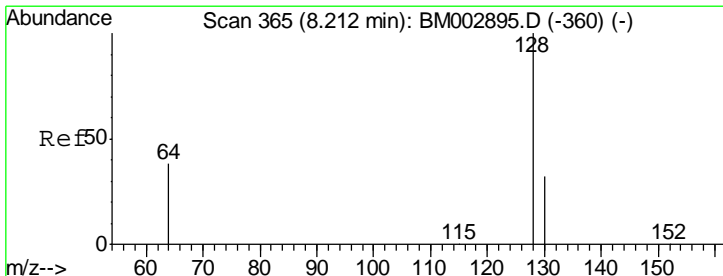
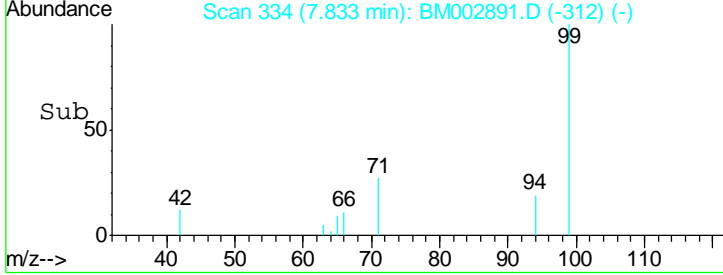
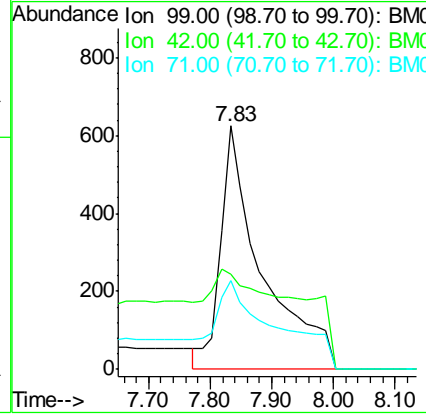
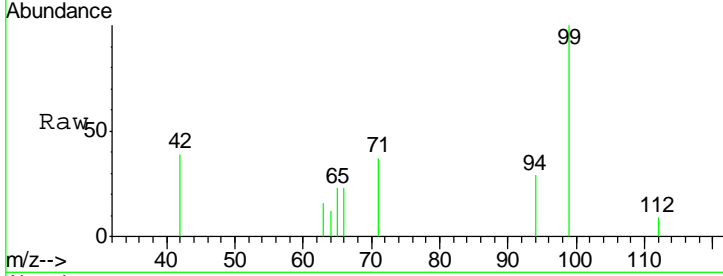




#3  
 Phenol-d6  
 Concen: 0.15 ng  
 RT: 7.83 min Scan# 334  
 Delta R.T. 0.05 min  
 Lab File: BM002891.D  
 Acq: 13 Oct 2015 17:57

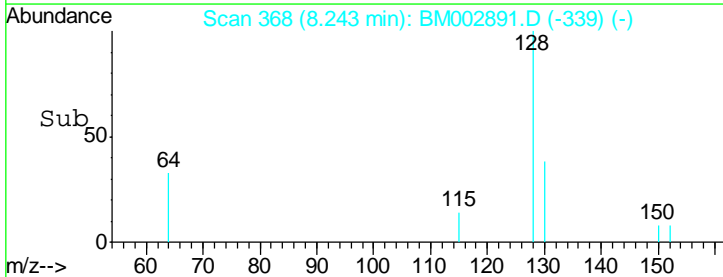
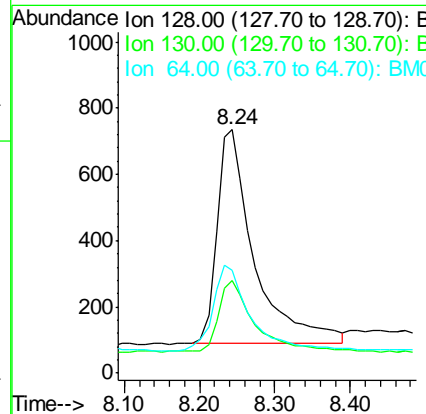
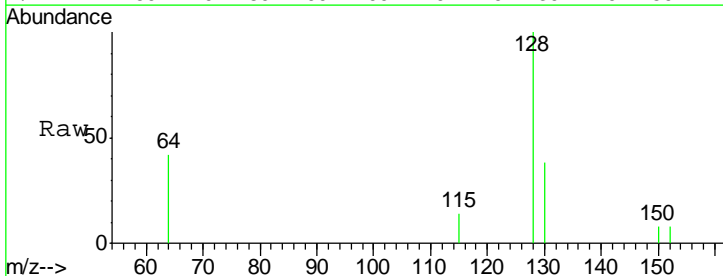
Instrument :  
 BNA\_M  
 ClientSampleId :  
 SSTDICC0.1

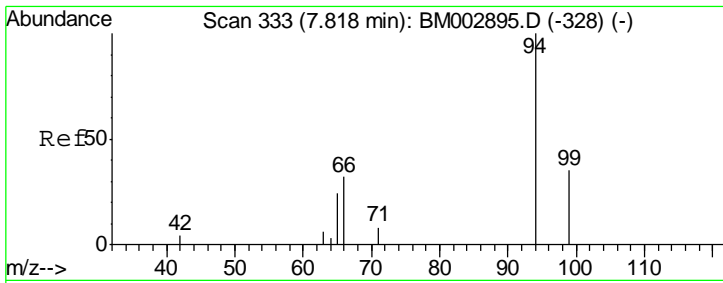
Tgt Ion	Resp	Lower	Upper
99	2865		
99	100		
42	39.2	12.1	18.1#
71	36.6	26.4	39.6



#4  
 2-Chlorophenol  
 Concen: 0.17 ng  
 RT: 8.24 min Scan# 368  
 Delta R.T. 0.03 min  
 Lab File: BM002891.D  
 Acq: 13 Oct 2015 17:57

Tgt Ion	Resp	Lower	Upper
128	2234		
128	100		
130	37.8	22.2	62.2
64	42.3	0.0	28.7#

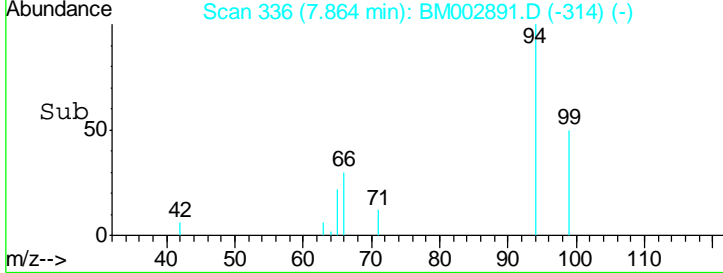
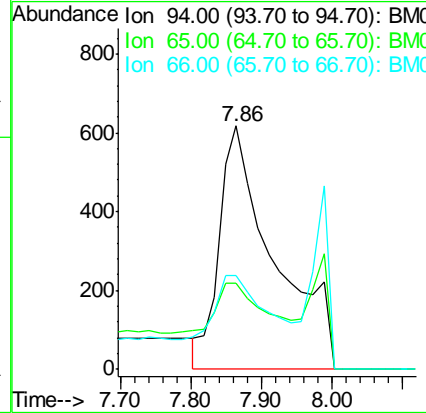
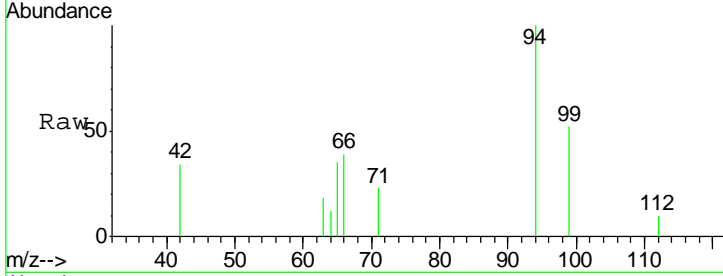




#5  
 Phenol  
 Concen: 0.17 ng  
 RT: 7.86 min Scan# 336  
 Delta R.T. 0.05 min  
 Lab File: BM002891.D  
 Acq: 13 Oct 2015 17:57

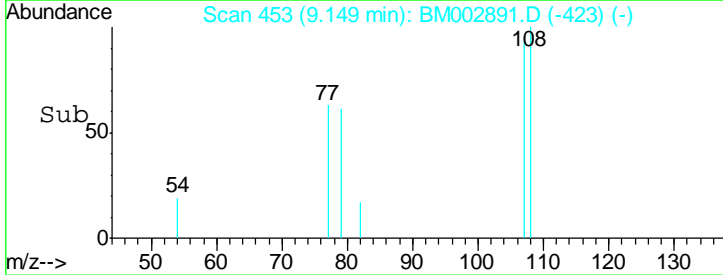
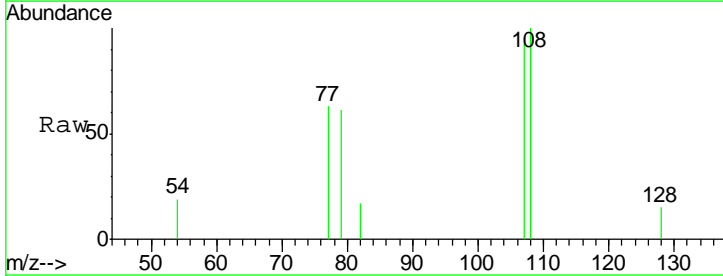
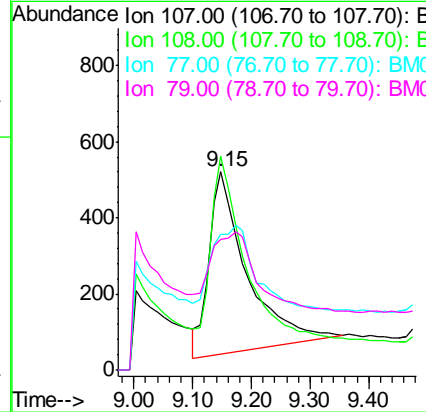
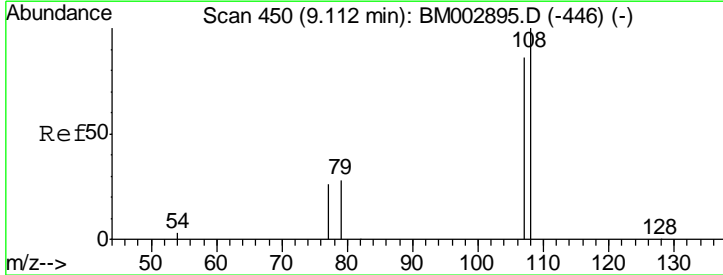
Instrument :  
 BNA\_M  
 ClientSampled :  
 SSTDICC0.1

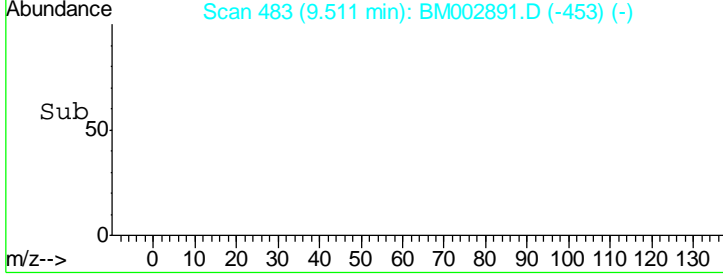
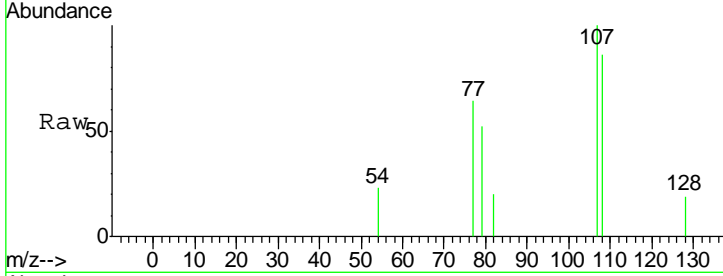
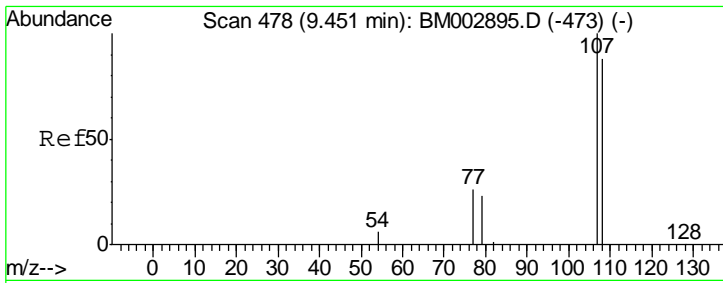
Tgt Ion	Resp	Lower	Upper
94	3257		
65	35.1	0.0	37.7
66	38.5	6.3	46.3



#6  
 2-Methylphenol  
 Concen: 0.20 ng  
 RT: 9.15 min Scan# 453  
 Delta R.T. 0.04 min  
 Lab File: BM002891.D  
 Acq: 13 Oct 2015 17:57

Tgt Ion	Resp	Lower	Upper
107	2153		
108	107.9	100.9	151.3
77	68.3	20.3	30.5#
79	65.8	22.8	34.2#

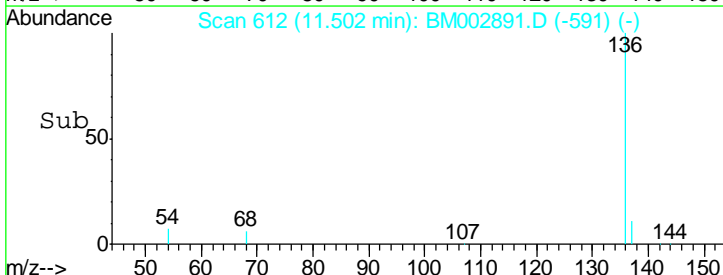
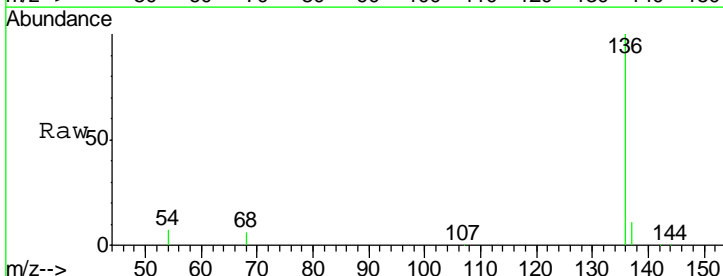
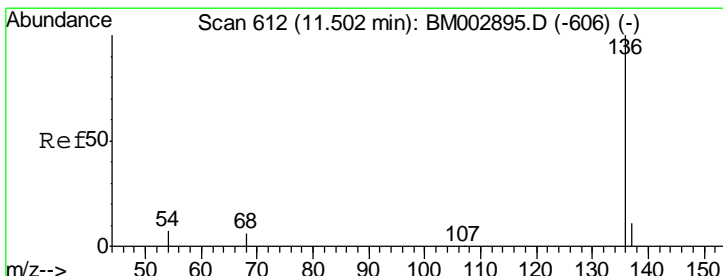
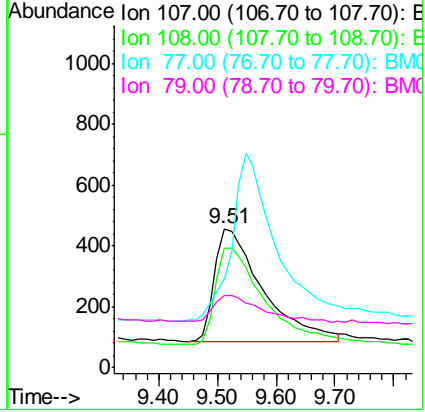




#7  
 3+4-Methylphenols  
 Concen: 0.15 ng  
 RT: 9.51 min Scan# 483  
 Delta R.T. 0.06 min  
 Lab File: BM002891.D  
 Acq: 13 Oct 2015 17:57

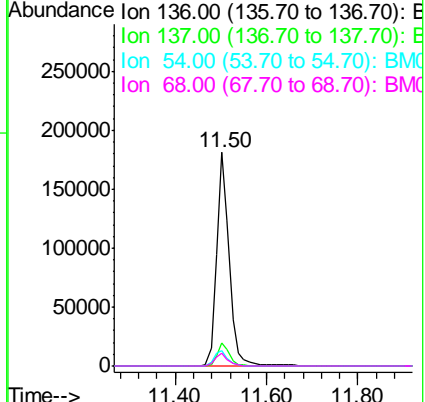
**Instrument :**  
 BNA\_M  
**ClientSampled :**  
 SSTDICC0.1

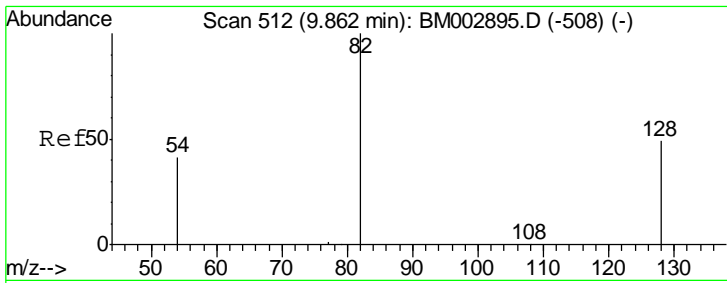
Tgt Ion	Resp	Lower	Upper
107	100		
108	85.7	86.3	126.3#
77	63.6	151.7	191.7#
79	51.8	7.4	47.4#



#8  
 Naphthalene-d8  
 Concen: 5.00 ng  
 RT: 11.50 min Scan# 612  
 Delta R.T. -0.00 min  
 Lab File: BM002891.D  
 Acq: 13 Oct 2015 17:57

Tgt Ion	Resp	Lower	Upper
136	100		
137	10.7	9.1	13.7
54	7.1	2.6	3.8#
68	6.1	2.2	3.2#

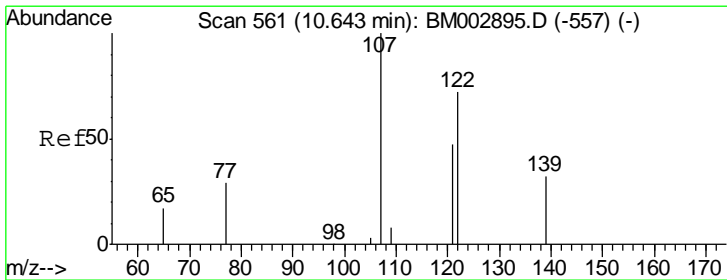
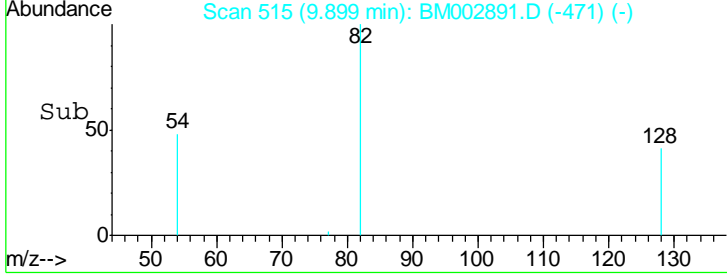
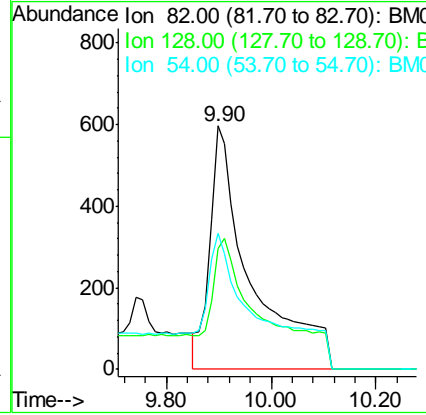
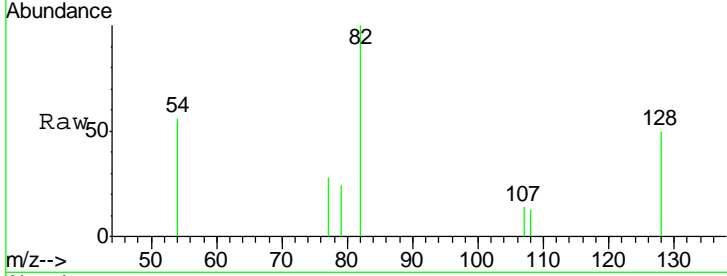




#9  
 Nitrobenzene-d5  
 Concen: 0.17 ng  
 RT: 9.90 min Scan# 515  
 Delta R.T. 0.04 min  
 Lab File: BM002891.D  
 Acq: 13 Oct 2015 17:57

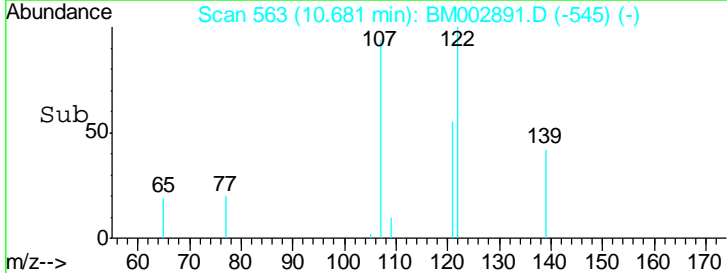
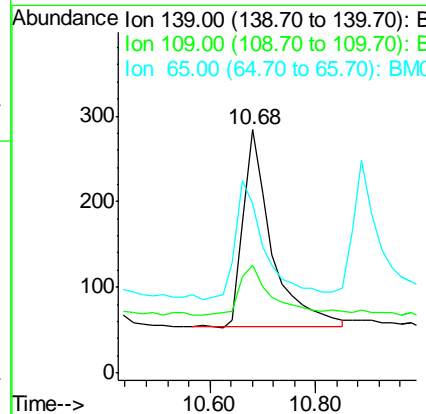
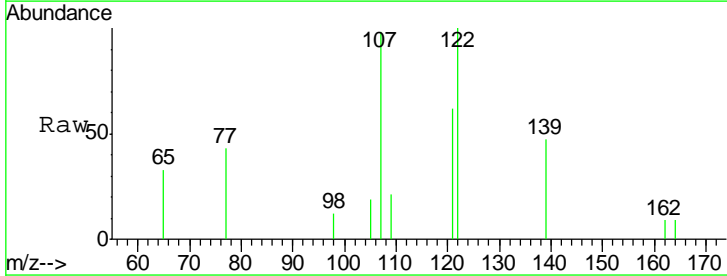
**Instrument :**  
 BNA\_M  
**ClientSampled :**  
 SSTDICC0.1

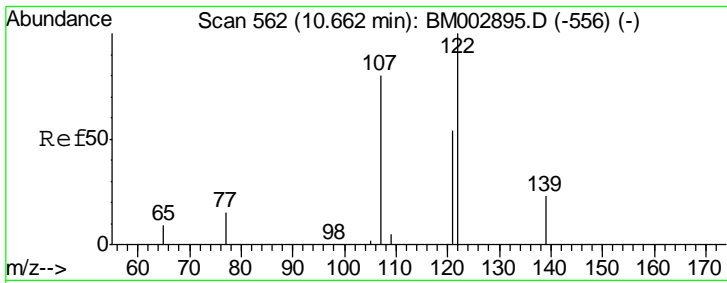
Tgt Ion	Resp	Lower	Upper
82	100		
128	65.3	0.0	0.0#
54	69.1	59.0	88.6



#10  
 2-Nitrophenol  
 Concen: 0.11 ng  
 RT: 10.68 min Scan# 563  
 Delta R.T. 0.04 min  
 Lab File: BM002891.D  
 Acq: 13 Oct 2015 17:57

Tgt Ion	Resp	Lower	Upper
139	100		
109	44.4	19.5	29.3#
65	69.7	18.6	28.0#

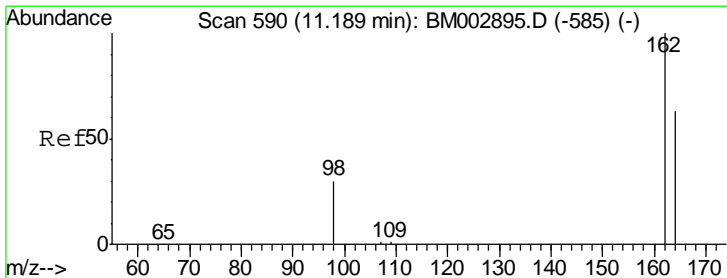
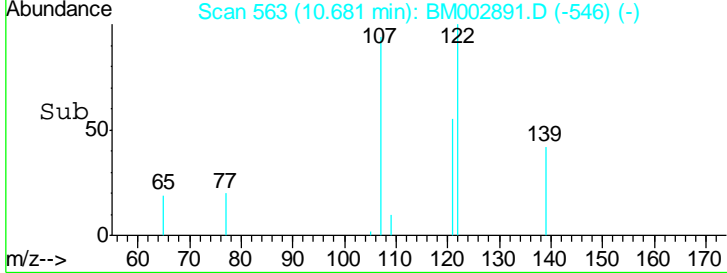
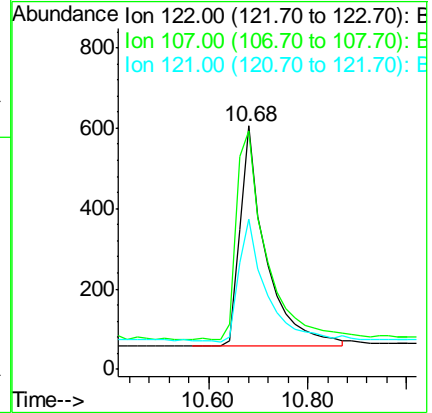
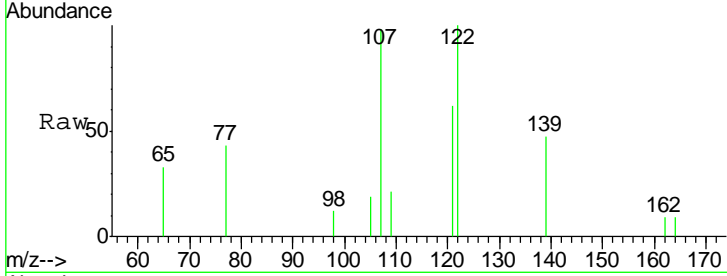




#11  
 2,4-Dimethylphenol  
 Concen: 0.12 ng  
 RT: 10.68 min Scan# 563  
 Delta R.T. 0.02 min  
 Lab File: BM002891.D  
 Acq: 13 Oct 2015 17:57

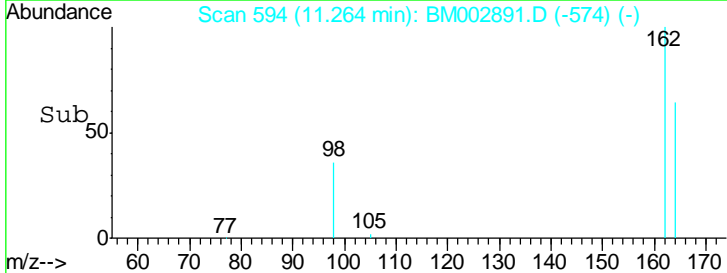
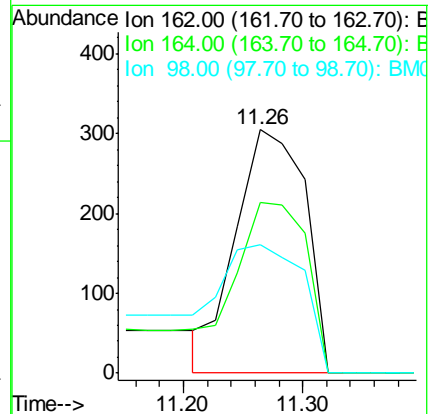
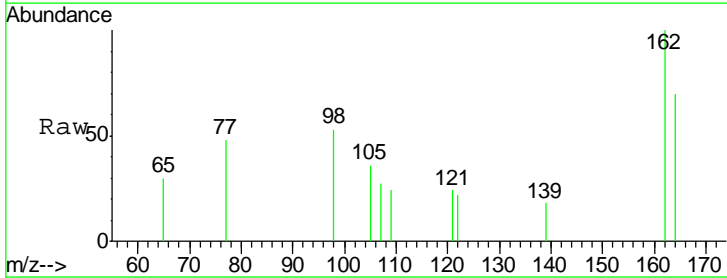
Instrument :  
 BNA\_M  
 ClientSampleId :  
 SSTDICC0.1

Tgt Ion	Resp	Lower	Upper
122	100		
107	98.0	68.6	102.8
121	61.6	44.8	67.2

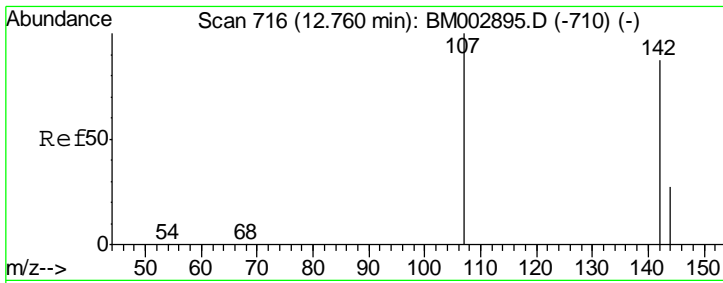


#12  
 2,4-Dichlorophenol  
 Concen: 0.07 ng  
 RT: 11.26 min Scan# 594  
 Delta R.T. 0.08 min  
 Lab File: BM002891.D  
 Acq: 13 Oct 2015 17:57

Tgt Ion	Resp	Lower	Upper
162	100		
164	70.2	49.2	89.2
98	52.8	0.0	37.4#





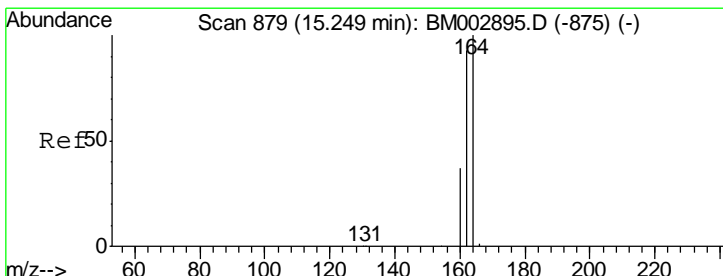
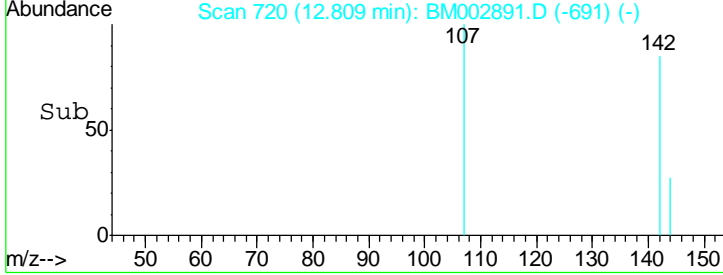
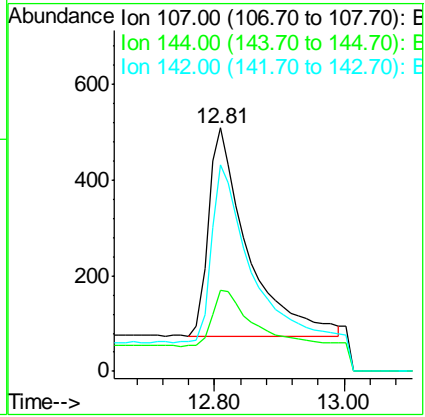
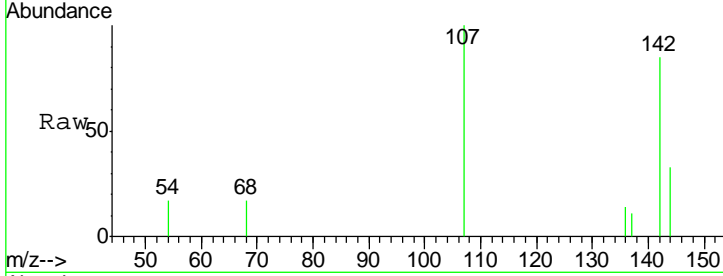


#13  
 4-Chloro-3-methylphenol  
 Concen: 0.10 ng  
 RT: 12.81 min Scan# 720  
 Delta R.T. 0.05 min  
 Lab File: BM002891.D  
 Acq: 13 Oct 2015 17:57

**Instrument :**  
 BNA\_M  
**ClientSampled :**  
 SSTDICC0.1

Tgt Ion:107 Resp: 1830

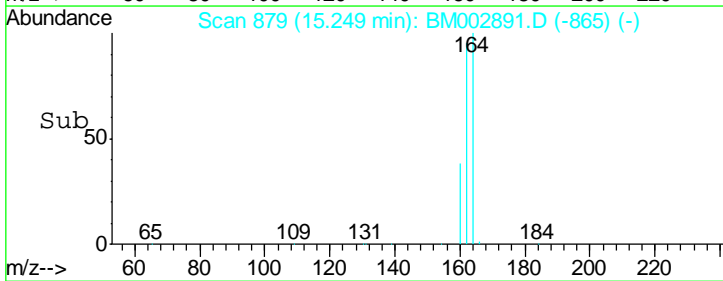
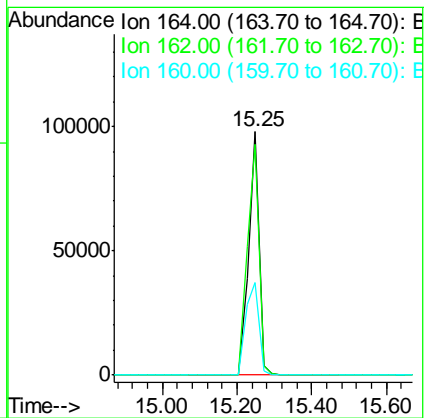
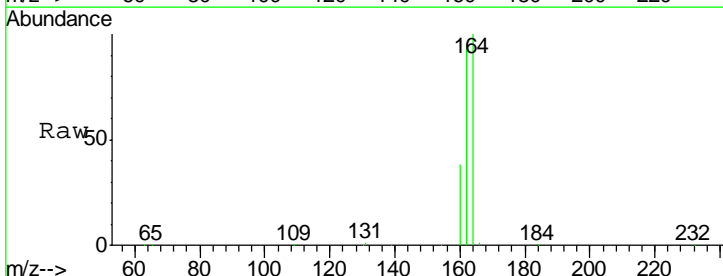
Ion	Ratio	Lower	Upper
107	100		
144	33.2	16.2	24.2#
142	84.7	49.8	74.6#

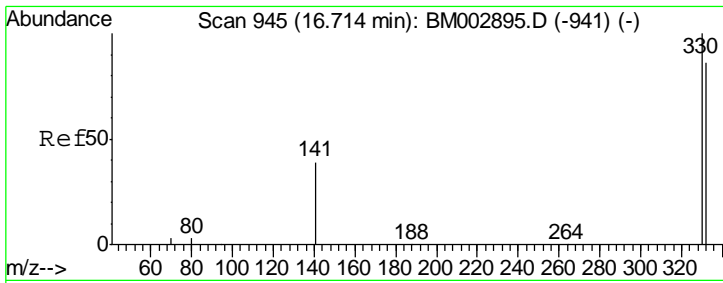


#14  
 Acenaphthene-d10  
 Concen: 5.00 ng  
 RT: 15.25 min Scan# 879  
 Delta R.T. -0.00 min  
 Lab File: BM002891.D  
 Acq: 13 Oct 2015 17:57

Tgt Ion:164 Resp: 189278

Ion	Ratio	Lower	Upper
164	100		
162	94.7	79.2	118.8
160	37.8	33.7	50.5

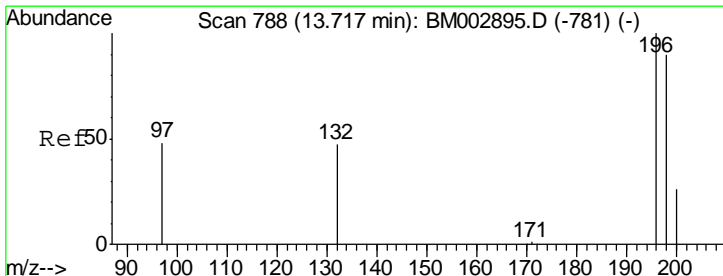
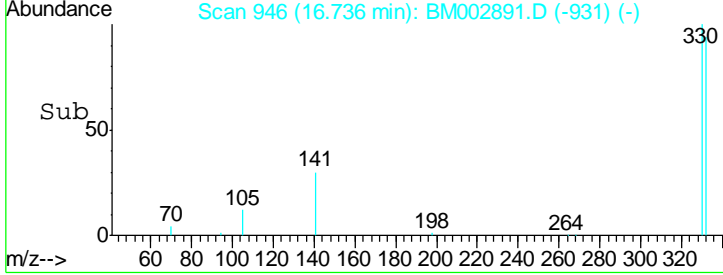
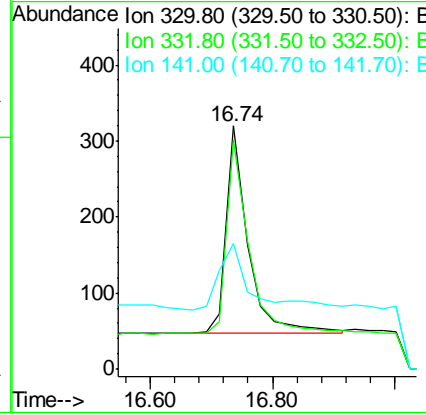
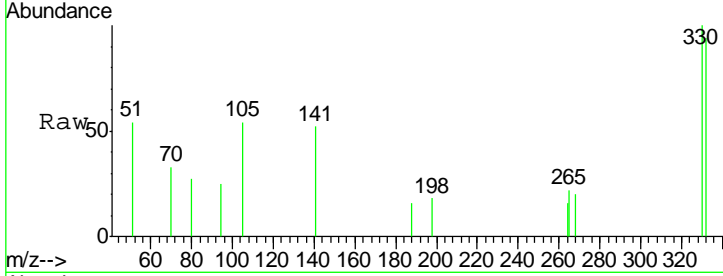




#15  
 2,4,6-Tribromophenol  
 Concen: 0.09 ng  
 RT: 16.74 min Scan# 946  
 Delta R.T. 0.02 min  
 Lab File: BM002891.D  
 Acq: 13 Oct 2015 17:57

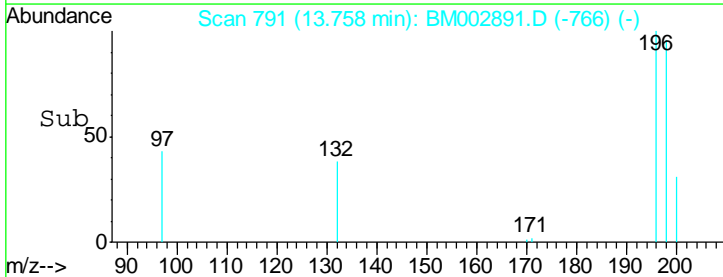
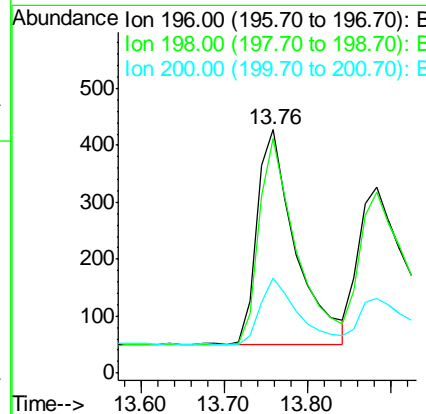
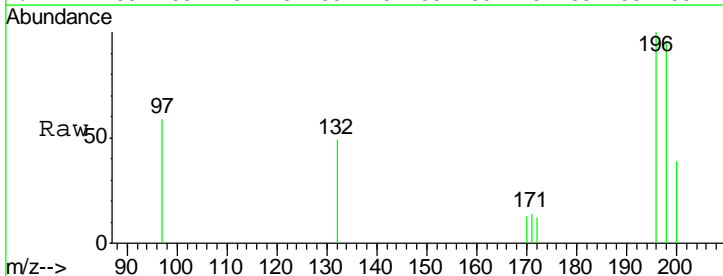
Instrument :  
 BNA\_M  
 ClientSampleID :  
 SSTDICC0.1

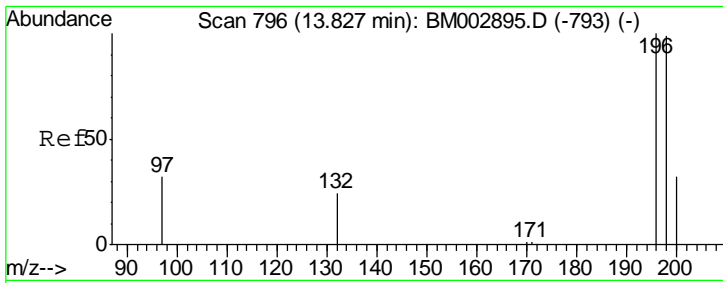
Tgt Ion	Resp	Lower	Upper
330	100		
332	96.7	74.0	111.0
141	47.4	24.1	36.1#



#16  
 2,4,6-Trichlorophenol  
 Concen: 0.09 ng  
 RT: 13.76 min Scan# 791  
 Delta R.T. 0.04 min  
 Lab File: BM002891.D  
 Acq: 13 Oct 2015 17:57

Tgt Ion	Resp	Lower	Upper
196	100		
198	96.5	54.2	81.2#
200	39.0	17.1	25.7#

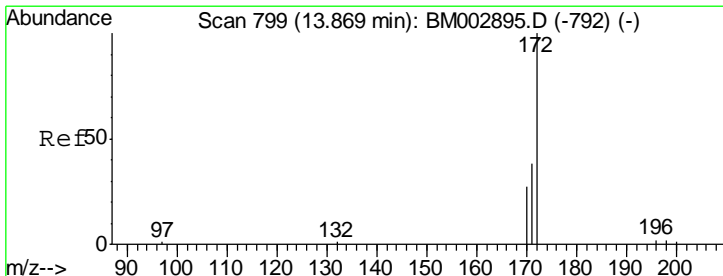
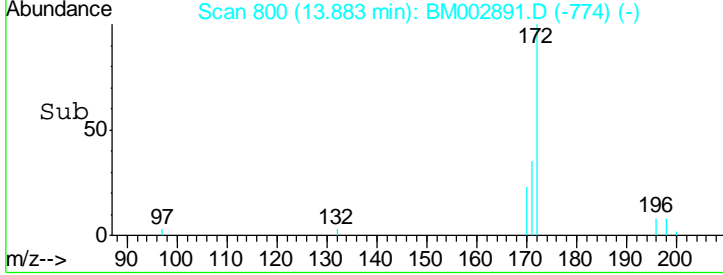
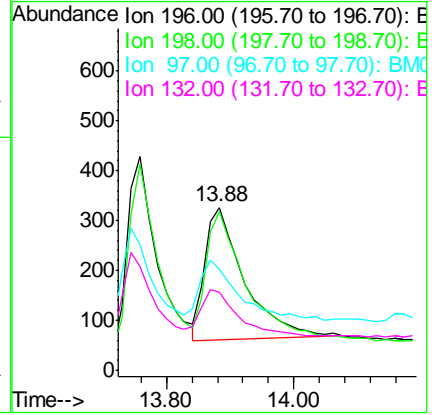
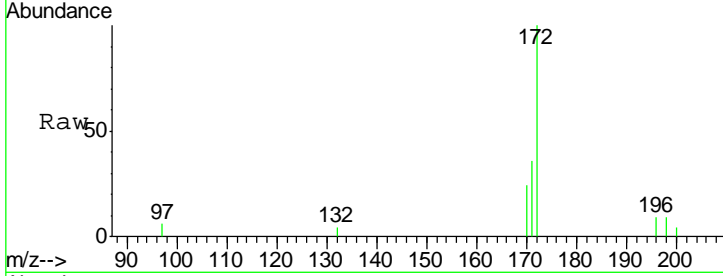




#17  
 2,4,5-Trichlorophenol  
 Concen: 0.08 ng  
 RT: 13.88 min Scan# 800  
 Delta R.T. 0.06 min  
 Lab File: BM002891.D  
 Acq: 13 Oct 2015 17:57

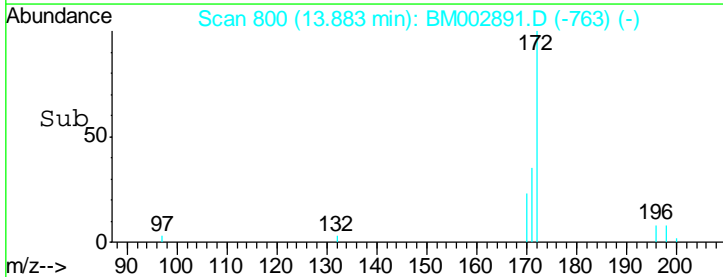
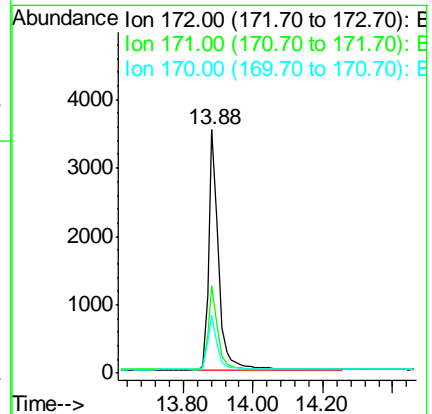
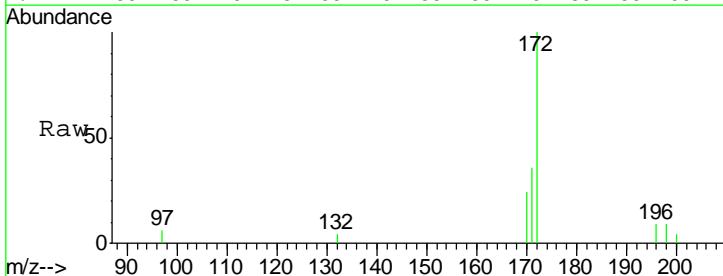
**Instrument :**  
 BNA\_M  
**ClientSampled :**  
 SSTDICC0.1

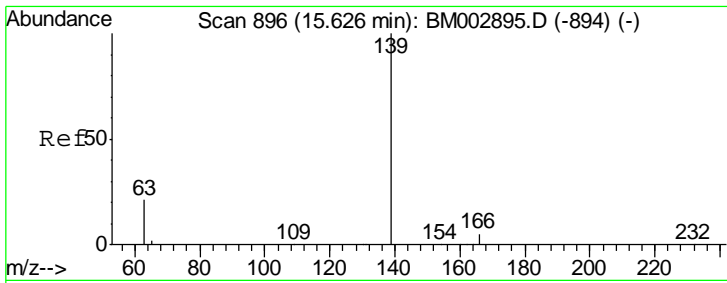
Tgt Ion	Resp	Lower	Upper
196	1154		
198	96.9	73.6	110.4
97	61.8	0.0	0.0#
132	47.7	0.0	0.0#



#18  
 2-Fluorobiphenyl  
 Concen: 0.12 ng  
 RT: 13.88 min Scan# 800  
 Delta R.T. 0.01 min  
 Lab File: BM002891.D  
 Acq: 13 Oct 2015 17:57

Tgt Ion	Resp	Lower	Upper
172	6975		
171	34.7	0.0	0.0#
170	22.7	0.0	0.0#

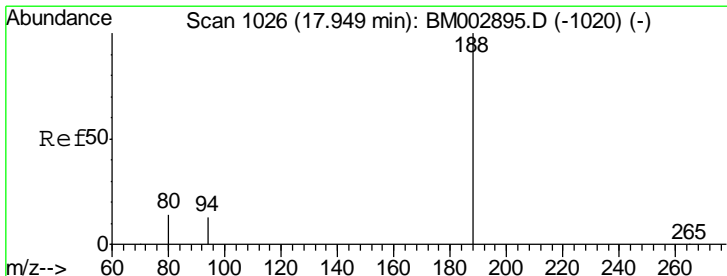
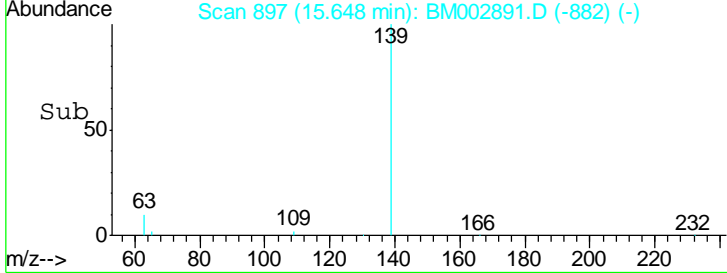
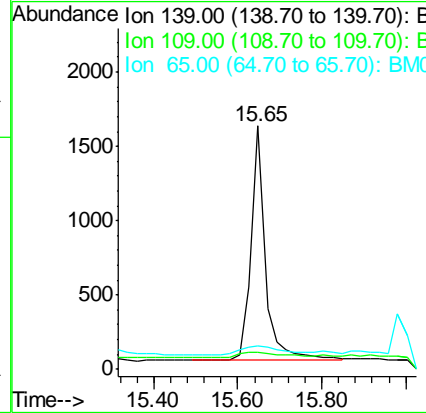
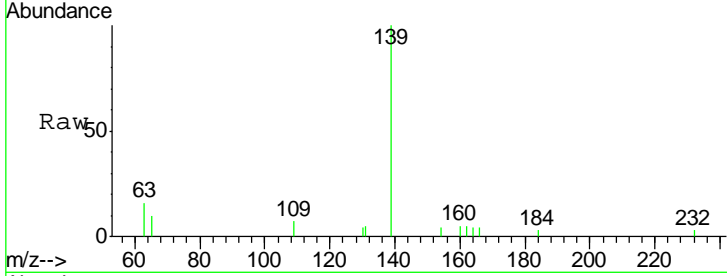




#20  
 4-Nitrophenol  
 Concen: 0.37 ng  
 RT: 15.65 min Scan# 897  
 Delta R.T. 0.02 min  
 Lab File: BM002891.D  
 Acq: 13 Oct 2015 17:57

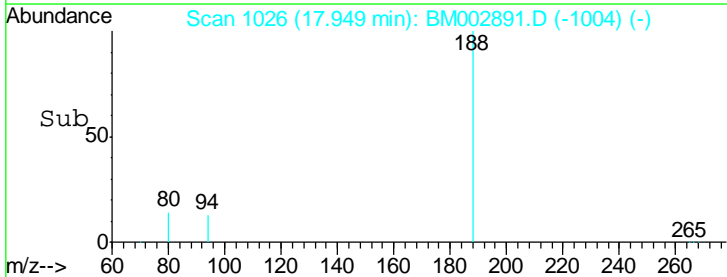
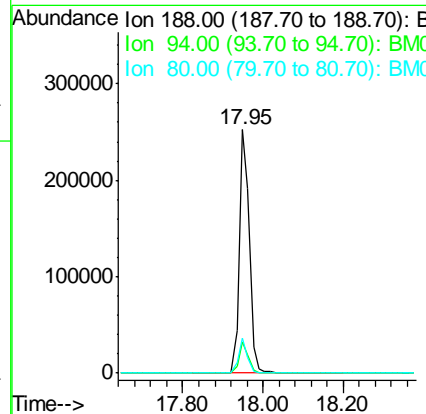
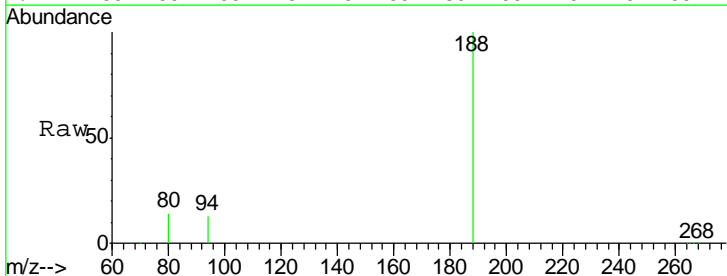
Instrument :  
 BNA\_M  
 ClientSampled :  
 SSTDICC0.1

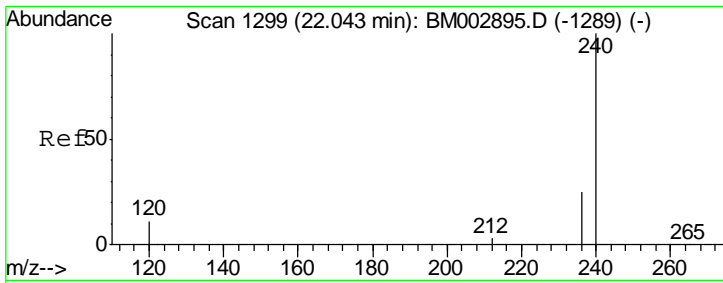
Tgt Ion	Resp	Lower	Upper
139	3761		
109	7.1	60.0	100.0#
65	9.6	85.7	125.7#



#21  
 Phenanthrene-d10  
 Concen: 5.00 ng  
 RT: 17.95 min Scan# 1026  
 Delta R.T. -0.00 min  
 Lab File: BM002891.D  
 Acq: 13 Oct 2015 17:57

Tgt Ion	Resp	Lower	Upper
188	438365		
94	12.7	2.9	4.3#
80	14.2	2.5	3.7#

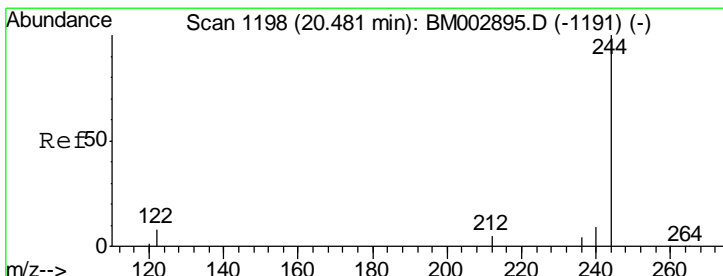
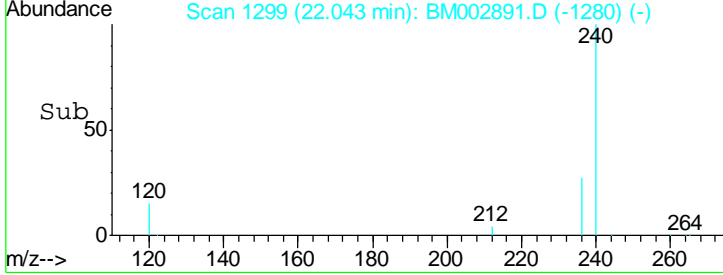
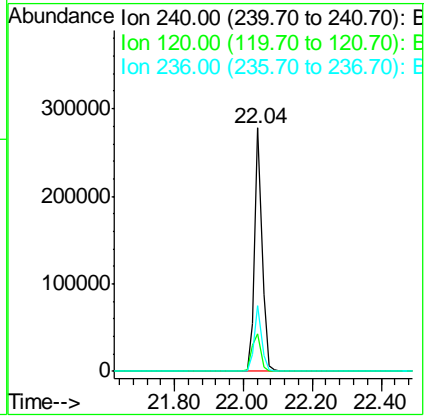
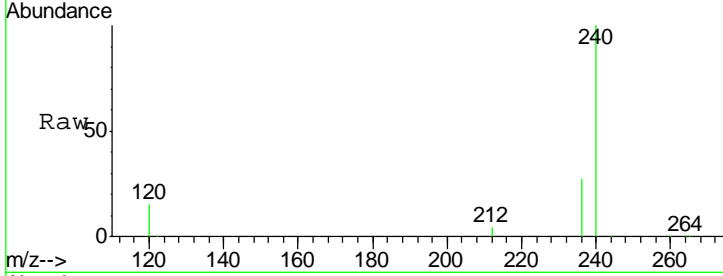




#24  
 Chrysene-d12  
 Concen: 5.00 ng  
 RT: 22.04 min Scan# 1299  
 Delta R.T. -0.00 min  
 Lab File: BM002891.D  
 Acq: 13 Oct 2015 17:57

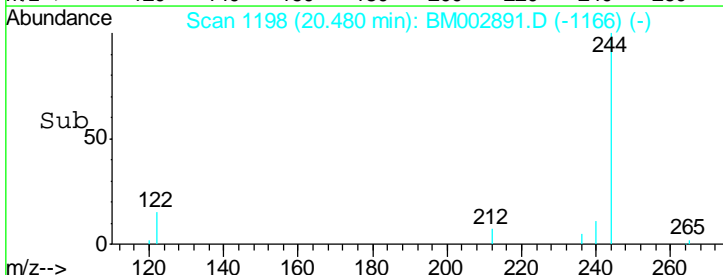
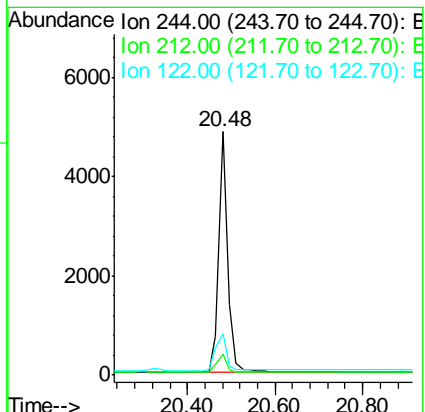
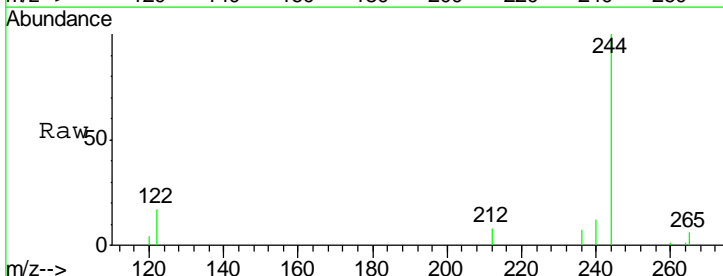
Instrument :  
 BNA\_M  
 ClientSampled :  
 SSTDICC0.1

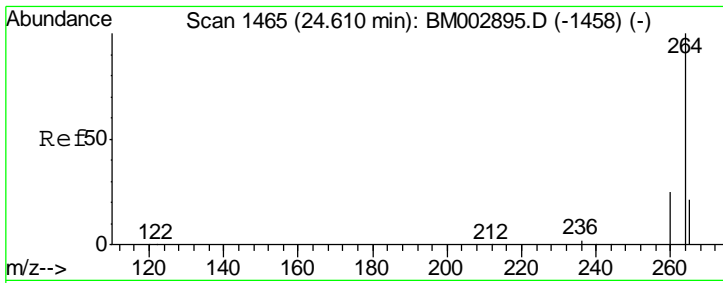
Tgt Ion	Resp	Lower	Upper
240	401662		
120	15.5	10.4	15.6
236	27.0	22.0	33.0



#25  
 Terphenyl-d14  
 Concen: 0.13 ng  
 RT: 20.48 min Scan# 1198  
 Delta R.T. -0.00 min  
 Lab File: BM002891.D  
 Acq: 13 Oct 2015 17:57

Tgt Ion	Resp	Lower	Upper
244	6875		
212	8.0	7.3	10.9
122	19.4	14.8	22.2





#26  
 Perylene-d12  
 Concen: 5.00 ng  
 RT: 24.61 min Scan# 1465  
 Delta R.T. -0.00 min  
 Lab File: BM002891.D  
 Acq: 13 Oct 2015 17:57

**Instrument :**  
 BNA\_M  
**ClientSampled :**  
 SSTDICC0.1

Tot Ion: 264 Resp: 380150

Ion	Ratio	Lower	Upper
264	100		
260	25.8	19.7	29.5
265	21.2	17.4	26.2

