

Data File : BM012149.D

Acq On : 13 Oct 2017 23:49

Operator : SJ/JU

Sample : I5772-10 5X

Misc :

ALS Vial : 7 Sample Multiplier: 1

Instrument :

BNA_M

Client Sampled :

BE2N8

Manual Integrations
APPROVED

Sohil

10/15/2017 12:44:38 PM

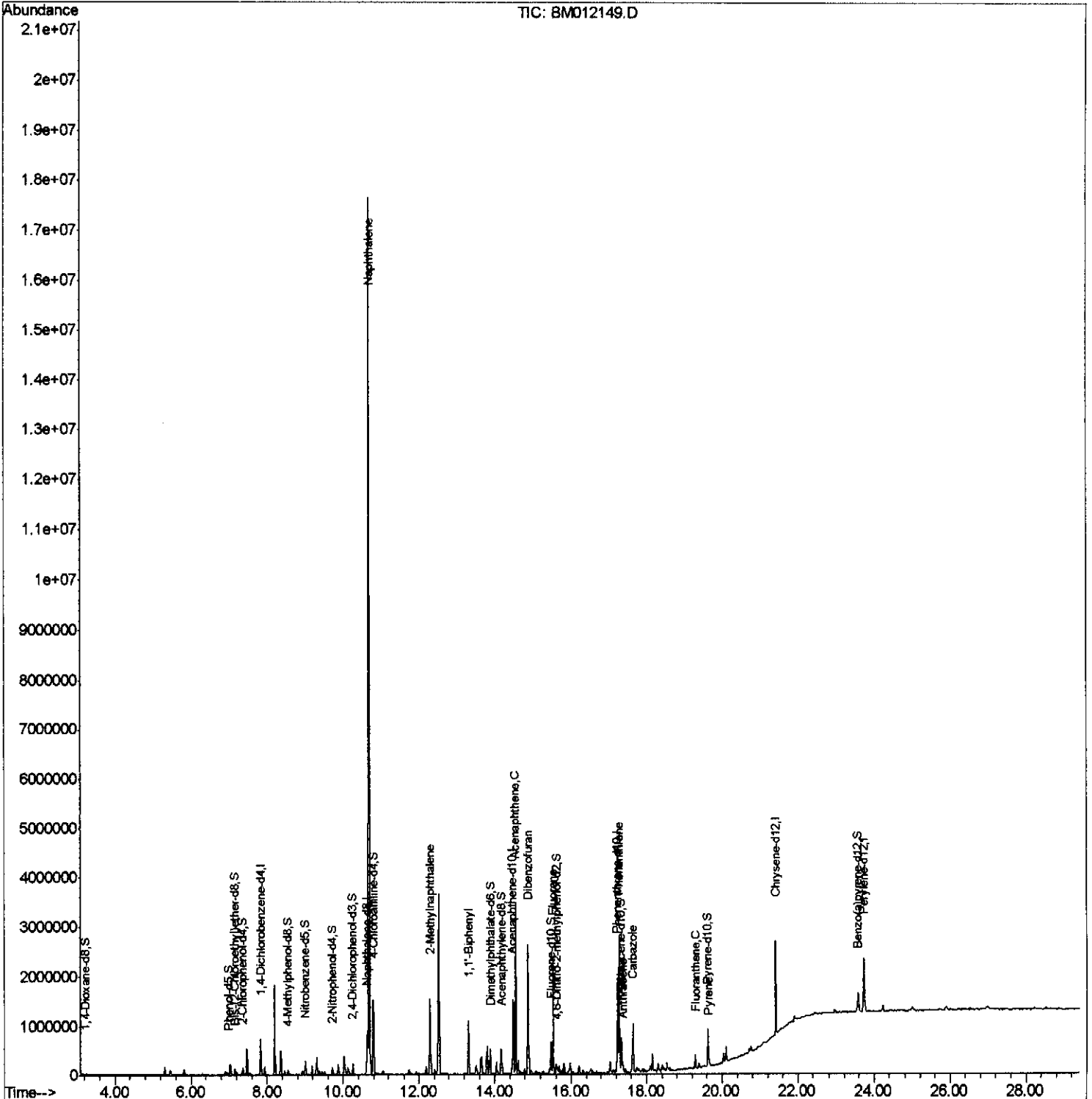
Quant Time: Oct 14 04:44:47 2017

Quant Method : Z:\HPCHEM1\BNA_M\METHODS\SOM-EPA-BM101217.M

Quant Title : SVOA CALIBRATION

QLast Update : Sat Oct 14 04:34:07 2017

Response via : Initial Calibration



Data Path : Z:\HPCHEM1\BNA_M\DATA\BM101317\
Quantitation Report (Qedit)

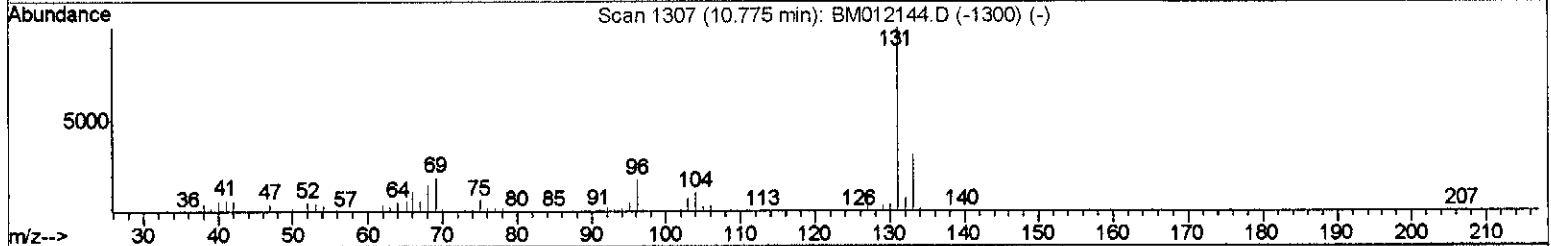
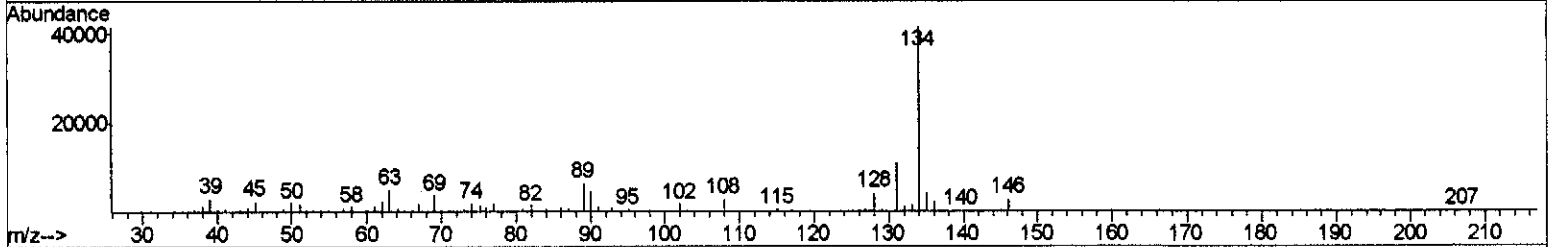
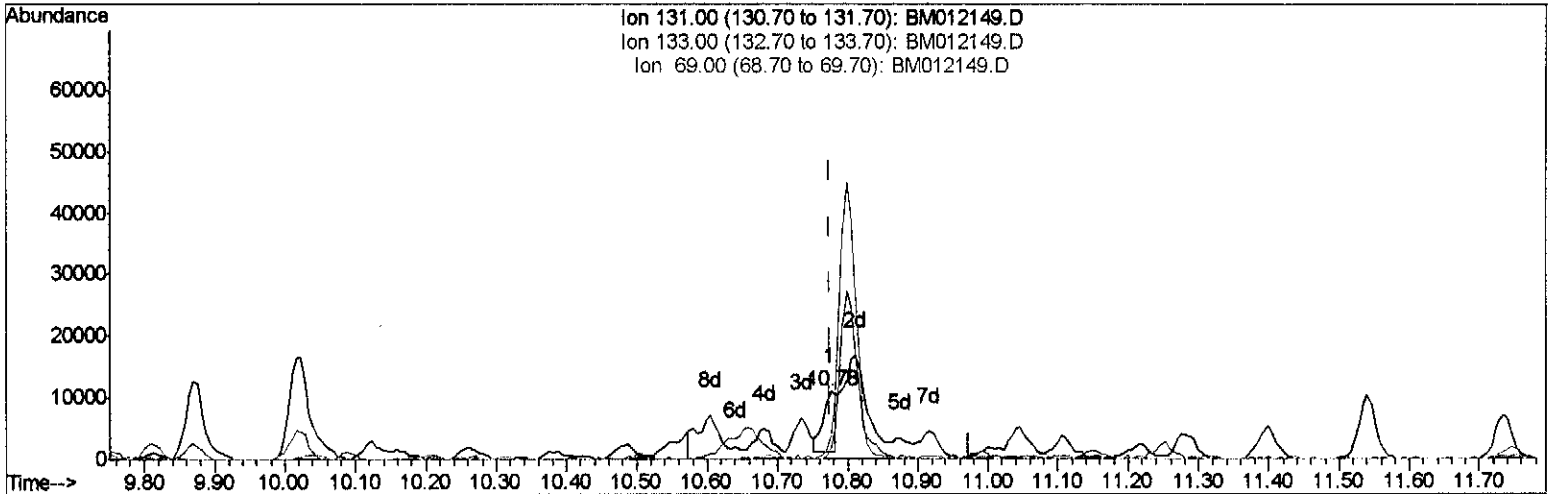
Data File : BM012149.D
Acq On : 13 Oct 2017 23:49
Operator : SJ/JU
Sample : I5772-10 5X
Misc :
ALS Vial : 7 Sample Multiplier: 1

Instrument :
BNA_M
Client Sampled :
BE2N8

Manual Integrations
APPROVED

Sohil
10/15/2017 12:44:38 PM

Quant Time: Oct 14 04:34:42 2017
Quant Method : Z:\HPCHEM1\BNA_M\METHODS\SOM-EPA-BM101217.M
Quant Title : SVOA CALIBRATION
QLast Update : Sat Oct 14 04:34:07 2017
Response via : Initial Calibration



TIC: BM012149.D

(29) 4-Chloroaniline-d4 (S)
10.775min (+0.000) 0.96ng/ul
response 12413
Ion Exp% Act%
131.00 100 100
133.00 31.40 16.47#
69.00 24.30 35.29#
0.00 0.00 0.00

Data Path : Z:\HPCHEM1\BNA_M\DATA\BM101317\
Quantitation Report (Qedit)

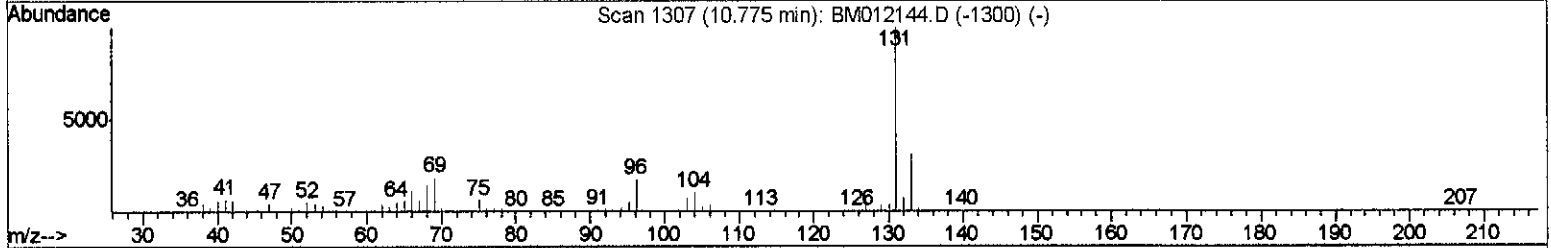
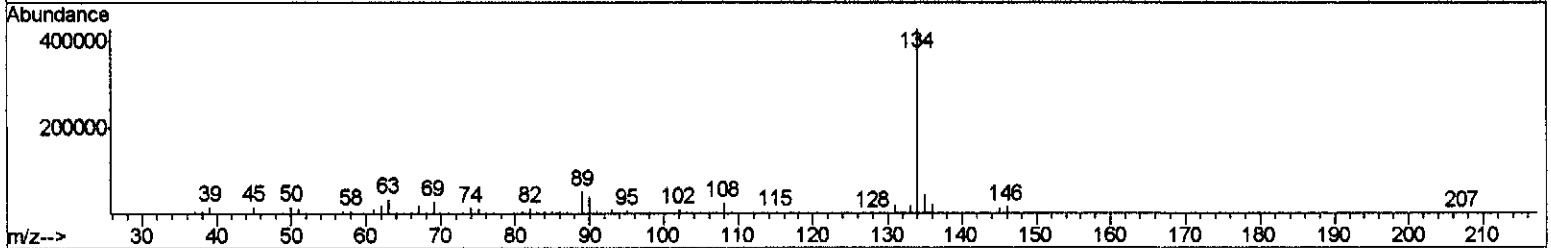
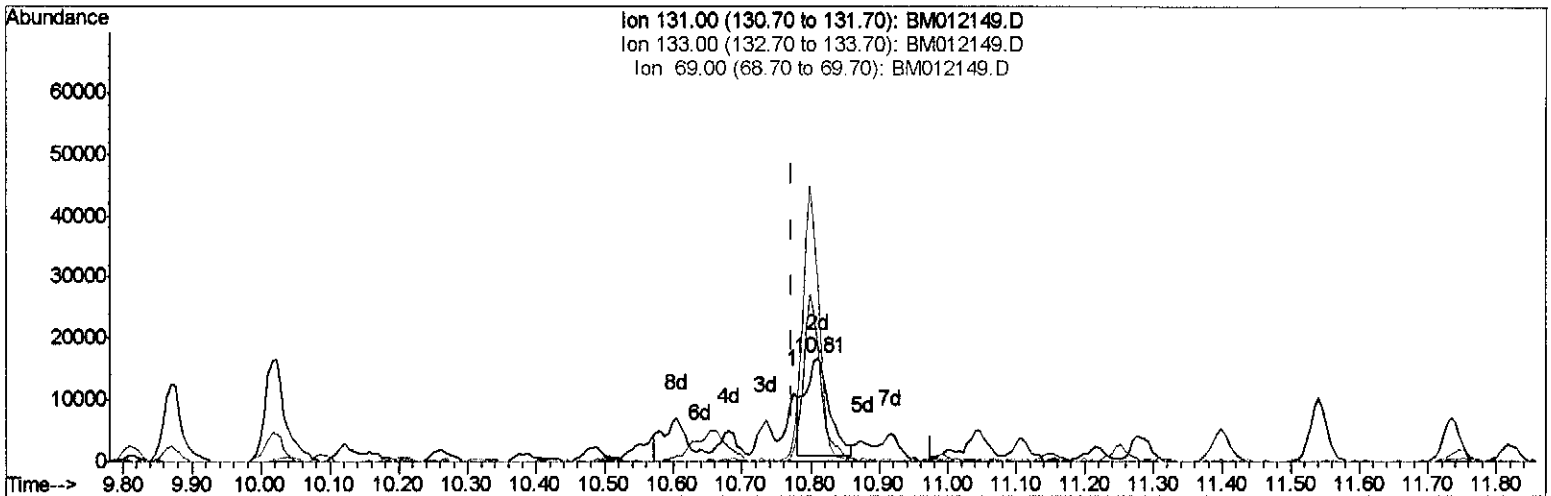
Data File : BM012149.D
Acq On : 13 Oct 2017 23:49
Operator : SJ/JU
Sample : I5772-10 5X
Misc :
ALS Vial : 7 Sample Multiplier: 1

Instrument :
BNA_M
Client Sampled :
BE2N8

Manual Integrations
APPROVED

Sohil
10/15/2017 12:44:38 PM

Quant Time: Oct 14 04:34:42 2017
Quant Method : Z:\HPCHEM1\BNA_M\METHODS\SOM-EPA-BM101217.M
Quant Title : SVOA CALIBRATION
QLast Update : Sat Oct 14 04:34:07 2017
Response via : Initial Calibration



TIC: BM012149.D

(29) 4-Chloroaniline-d4 (S)

10.810min (+0.036) 2.97ng/ul m > SJ 10/15/17

response 38474

Ion	Exp%	Act%
131.00	100	100
133.00	31.40	107.47#
69.00	24.30	166.62#
0.00	0.00	0.00

Data Path : Z:\HPCHEM1\BNA_M\DATA\BM101317\

Quantitation Report (Qedit)

Data File : BM012149.D

Acq On : 13 Oct 2017 23:49

Operator : SJ/JU

Sample : I5772-10 5X

Misc :

ALS Vial : 7 Sample Multiplier: 1

Instrument :

BNA_M

Client Sample ID :

BE2N8

Manual Integrations
APPROVED

Sohil

10/15/2017 12:44:38 PM

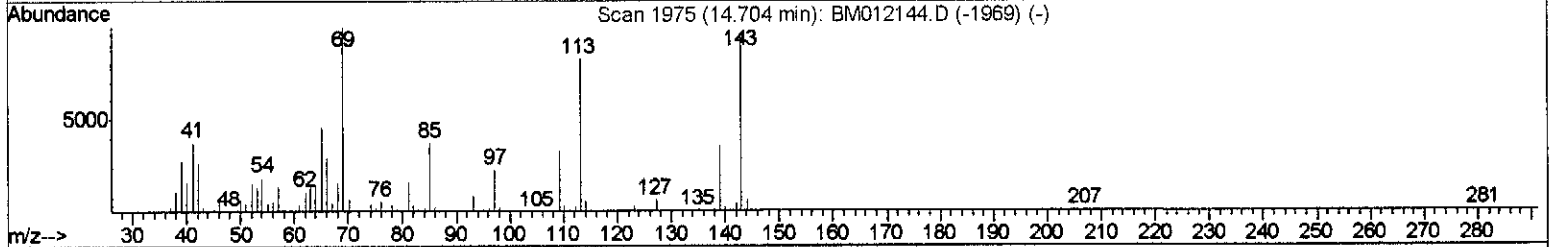
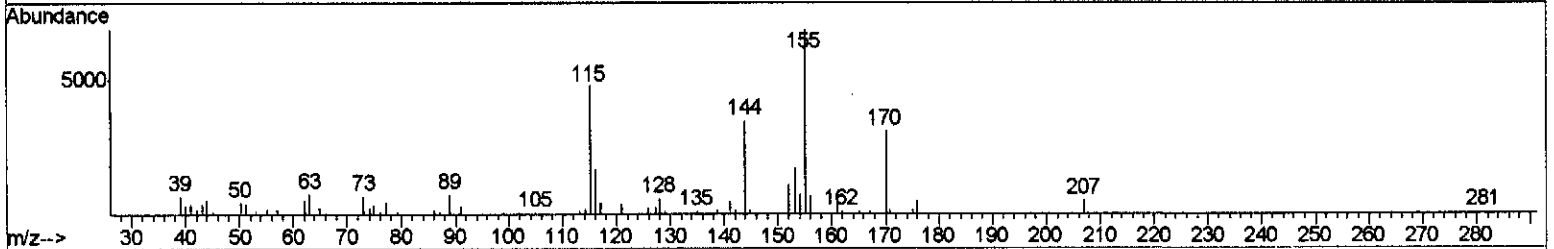
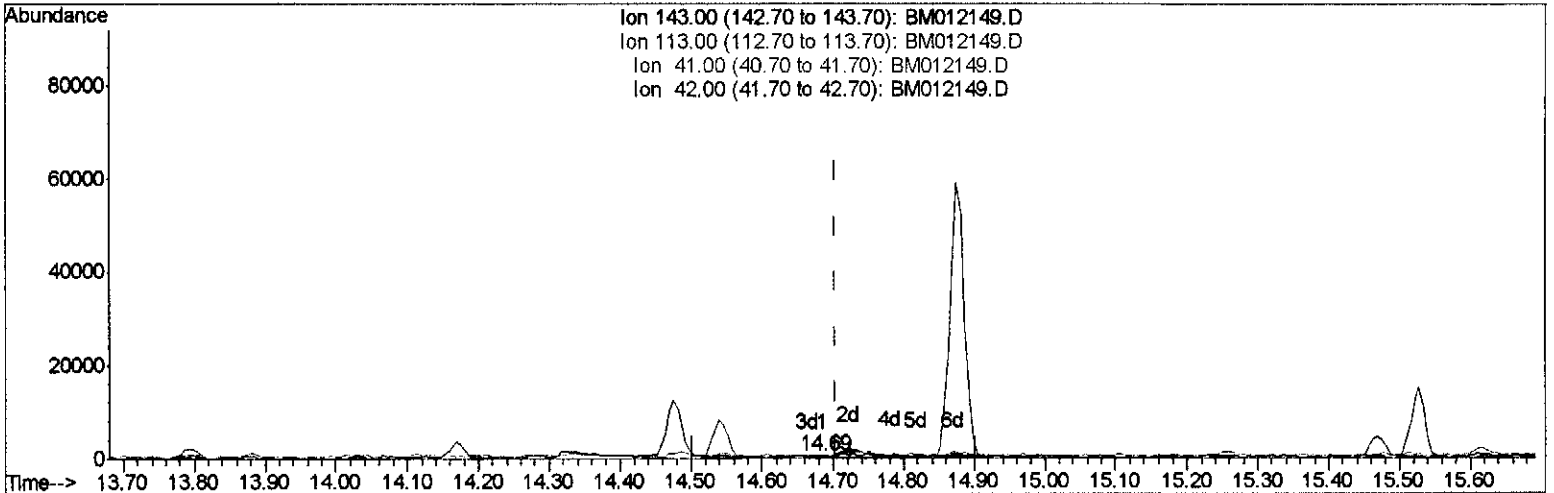
Quant Time: Oct 14 04:34:42 2017

Quant Method : Z:\HPCHEM1\BNA_M\METHODS\SOM-EPA-BM101217.M

Quant Title : SVOA CALIBRATION

QLast Update : Sat Oct 14 04:34:07 2017

Response via : Initial Calibration



TIC: BM012149.D

(51) 4-Nitrophenol-d4 (S)

14.687min (-0.017) 0.02ng/ui

response 131

Ion	Exp%	Act%
143.00	100	100
113.00	114.60	117.52
41.00	34.80	183.56#
42.00	20.50	126.68#

Data Path : Z:\HPCHEM1\BNA_M\DATA\BM101317\

Quantitation Report (Qedit)

Data File : BM012149.D

Acq On : 13 Oct 2017 23:49

Operator : SJ/JU

Sample : I5772-10 5X

Misc :

ALS Vial : 7 Sample Multiplier: 1

Instrument :

BNA_M

ClientSampled :

BE2N8

Manual Integrations
APPROVED

Sohil

10/15/2017 12:44:38 PM

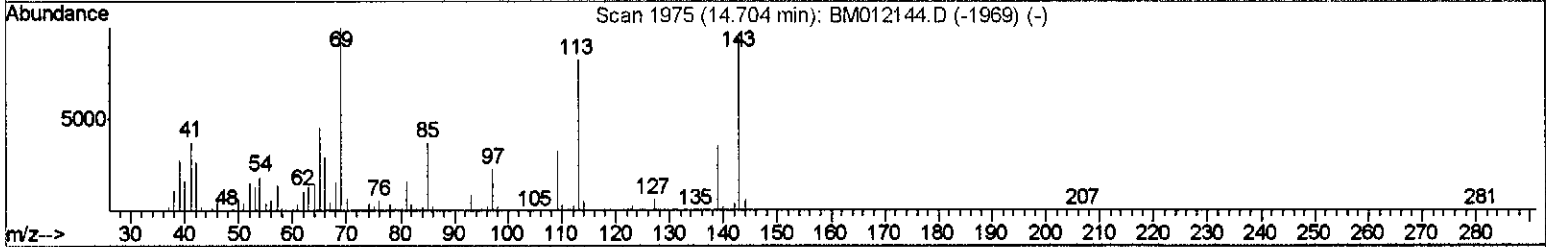
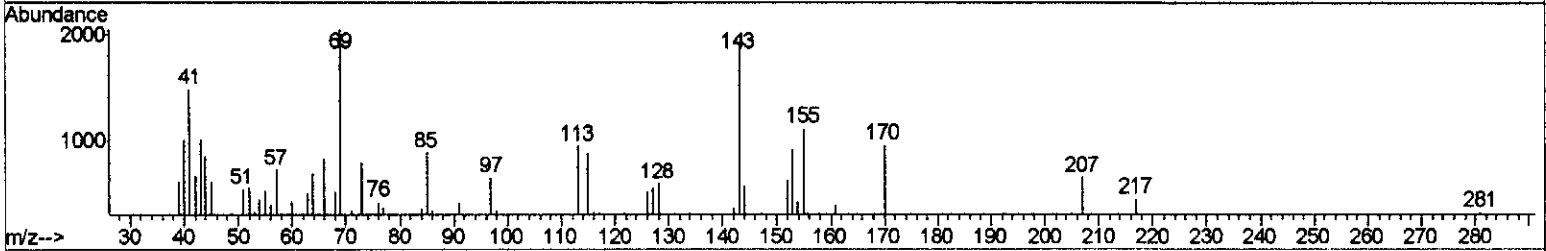
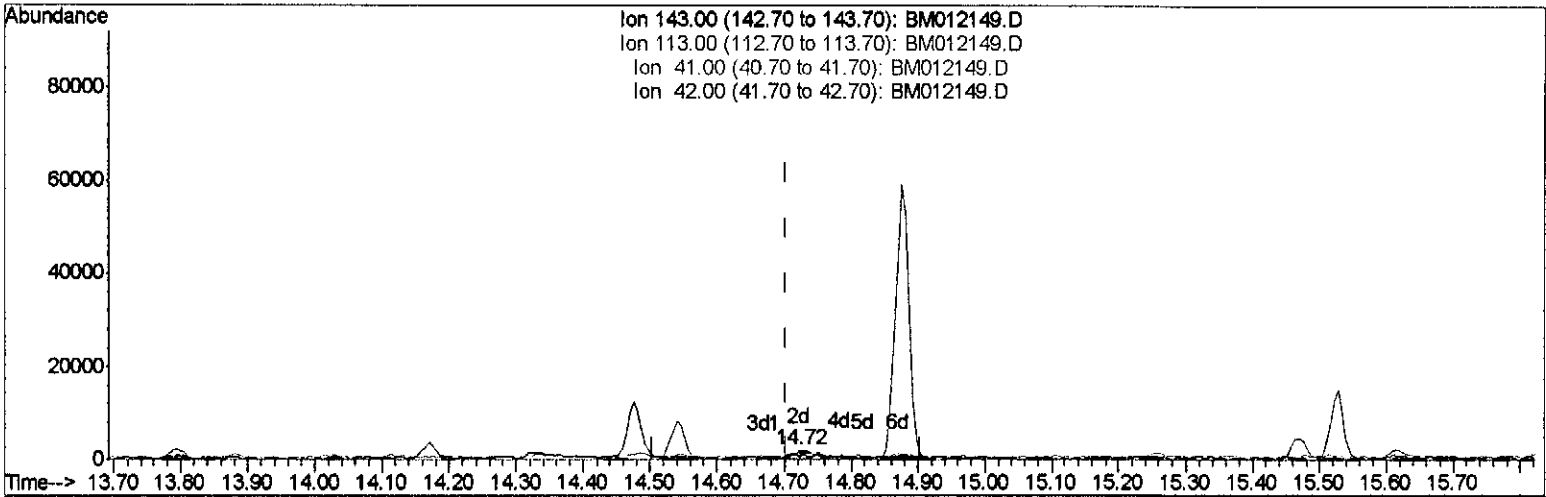
Quant Time: Oct 14 04:34:42 2017

Quant Method : Z:\HPCHEM1\BNA_M\METHODS\SOM-EPA-BM101217.M

Quant Title : SVOA CALIBRATION

QLast Update : Sat Oct 14 04:34:07 2017

Response via : Initial Calibration



(51) 4-Nitrophenol-d4 (S)

14.722min (+0.018) 0.99ng/ul m > 53 10/15/17

response 6481

Ion	Exp%	Act%
143.00	100	100
113.00	114.60	49.76#
41.00	34.80	77.91#
42.00	20.50	34.63#

Data File : BM012149.D

Acq On : 13 Oct 2017 23:49

Operator : SJ/JU

Sample : I5772-10 5X

Misc :

ALS Vial : 7 Sample Multiplier: 1

Instrument :
BNA_M
ClientSampled :
BE2N8

Manual Integrations
APPROVED

Sohil
10/15/2017 12:44:38 PM

Quant Time: Oct 14 04:44:47 2017

Quant Method : Z:\HPCHEM1\BNA_M\METHODS\SOM-EPA-BM101217.M

Quant Title : SVOA CALIBRATION

QLast Update : Sat Oct 14 04:34:07 2017

Response via : Initial Calibration

Internal Standards	R.T.	QIon	Response	Conc	Units	Dev (Min)
1) 1,4-Dichlorobenzene-d4	7.82	152	190278	20.00	ng/ul	0.00
18) Naphthalene-d8	10.63	136	814229	20.00	ng/ul	0.00
35) Acenaphthene-d10	14.47	164	491092	20.00	ng/ul	0.00
61) Phenanthrene-d10	17.22	188	1071362	20.00	ng/ul	0.00
75) Chrysene-d12	21.40	240	871623	20.00	ng/ul	0.00
83) Perylene-d12	23.72	264	824719	20.00	ng/ul	0.00

System Monitoring Compounds

3) 1,4-Dioxane-d8	3.24	96	5618	1.40	ng/uL	0.00
5) Phenol-d5	6.99	99	18755	1.21	ng/ul	0.00
7) Bis-(2-Chloroethyl) ether-d	7.15	67	54502	5.89	ng/ul	0.00
9) 2-Chlorophenol-d4	7.36	132	63009	4.81	ng/ul	0.00
13) 4-Methylphenol-d8	8.54	113	38984	2.93	ng/ul	0.00
19) Nitrobenzene-d5	8.99	128	41245	6.64	ng/ul	0.00
22) 2-Nitrophenol-d4	9.72	143	45911	6.32	ng/ul	0.00
26) 2,4-Dichlorophenol-d3	10.26	165	80929	5.84	ng/ul	0.00
29) 4-Chloroaniline-d4	10.81	131	38474m	2.97	ng/ul	0.04
43) Dimethylphthalate-d6	13.88	166	304529	7.02	ng/ul	0.00
46) Acenaphthylene-d8	14.17	160	347059	6.61	ng/ul	0.00
51) 4-Nitrophenol-d4	14.72	143	6481m	0.99	ng/ul	0.02
57) Fluorene-d10	15.47	176	242033	6.79	ng/ul	0.00
62) 4,6-Dinitro-2-methylphenol	15.62	200	29480	4.01	ng/ul	0.00
70) Anthracene-d10	17.32	188	366203	6.91	ng/ul	0.00
76) Pyrene-d10	19.62	212	368933	8.34	ng/ul	0.00
87) Benzo(a)pyrene-d12	23.57	264	272875	6.86	ng/ul	-0.01

} 50 10/15/17

Target Compounds	R.T.	QIon	Response	Conc	Units	Qvalue
28) Naphthalene	10.69	128	14204185	337.18	ng/ul	98
34) 2-Methylnaphthalene	12.29	142	686243	21.59	ng/ul	96
40) 1,1'-Biphenyl	13.30	154	535246	12.91	ng/ul	98
49) Acenaphthene	14.54	153	1349381	38.83	ng/ul	99
53) Dibenzofuran	14.87	168	1609331	32.16	ng/ul	99
58) Fluorene	15.53	166	941878	22.66	ng/ul	99
69) Phenanthrene	17.27	178	1565838	25.69	ng/ul	98
71) Anthracene	17.36	178	112713	1.79	ng/ul	96
72) Carbazole	17.63	167	643518	12.05	ng/ul	98
74) Fluoranthene	19.28	202	154606	2.10	ng/ul#	92
77) Pyrene	19.65	202	86071	1.50	ng/ul#	91

(#) = qualifier out of range (m) = manual integration (+) = signals summed