

Data Path : Z:\SVOASRV\HPCHEM1\BNA_M\DATA\BM101318\
 Data File : BM017158.D
 Acq On : 13 Oct 2018 21:46
 Operator : MJ/SJ
 Sample : J5400-17
 Misc :
 ALS Vial : 18 Sample Multiplier: 1

Instrument :
 BNA_M
 ClientSampleId :
 C0BF5

Integration Parameters: LSCINT.P

Integrator: RTE
 Smoothing : OFF Filtering: 5
 Sampling : 1 Min Area: 0.1 % of largest Peak
 Start Thrs: 0.2 Max Peaks: 100
 Stop Thrs : 0 Peak Location: TOP

If leading or trailing edge < 100 prefer < Baseline drop else tangent >
 Peak separation: 5

Method : Z:\SVOASRV\HPCHEM1\BNA_M\METHODS\SOM-EPA-BM100418MA.M
 Title : SVOA CALIBRATION

Signal : TIC

peak #	R.T. min	first scan	max scan	last scan	PK TY	peak height	corr. area	corr. % max.	% of total
1	3.175	28	32	36	rBV	927430	885611	33.05%	4.627%
2	4.575	267	270	274	rVB	80839	89817	3.35%	0.469%
3	4.675	284	287	294	rVV5	148212	233945	8.73%	1.222%
4	4.763	298	302	308	rVB	412631	553339	20.65%	2.891%
5	5.081	354	356	360	rVB	80265	81280	3.03%	0.425%
6	7.687	793	799	807	rVB	907965	1411570	52.68%	7.375%
7	8.904	1001	1006	1014	rVB	56384	86912	3.24%	0.454%
8	9.316	1074	1076	1081	rVB2	8719	11283	0.42%	0.059%
9	9.587	1120	1122	1124	rBV2	4672	4994	0.19%	0.026%
10	9.645	1128	1132	1135	rVB5	5689	10284	0.38%	0.054%
11	9.745	1140	1149	1152	rVB4	11071	24906	0.93%	0.130%
12	9.816	1156	1161	1165	rVV3	10553	14991	0.56%	0.078%
13	9.892	1168	1174	1182	rVB4	16167	32940	1.23%	0.172%
14	9.998	1187	1192	1196	rVV4	12411	16214	0.61%	0.085%
15	10.045	1196	1200	1208	rVB4	6036	11925	0.45%	0.062%
16	10.192	1222	1225	1230	rBV3	3414	5040	0.19%	0.026%
17	10.239	1230	1233	1239	rVB5	6680	11467	0.43%	0.060%
18	10.322	1241	1247	1250	rBV5	4406	7678	0.29%	0.040%
19	10.357	1250	1253	1255	rVB4	3808	3820	0.14%	0.020%
20	10.463	1258	1271	1279	rBV	1270376	2314847	86.38%	12.095%
21	10.586	1287	1292	1294	rBV4	10001	16884	0.63%	0.088%
22	10.628	1294	1299	1304	rVB	45475	75133	2.80%	0.393%
23	10.686	1304	1309	1310	rBV3	8227	8389	0.31%	0.044%
24	10.716	1310	1314	1317	rVB5	8225	10971	0.41%	0.057%
25	10.751	1317	1320	1326	rVB6	8094	12845	0.48%	0.067%
26	10.816	1326	1331	1333	rBV3	3648	5357	0.20%	0.028%
27	10.863	1333	1339	1345	rBV7	9005	17905	0.67%	0.094%
28	10.928	1345	1350	1351	rBV4	12715	16596	0.62%	0.087%
29	11.016	1363	1365	1371	rVB6	3984	6879	0.26%	0.036%
30	11.081	1373	1376	1379	rVB4	3620	3570	0.13%	0.019%
31	11.157	1379	1389	1393	rBV8	17298	49861	1.86%	0.261%
32	11.222	1393	1400	1409	rVB5	16133	38210	1.43%	0.200%
33	11.298	1409	1413	1419	rVB4	15429	26606	0.99%	0.139%
34	11.381	1419	1427	1435	rVB6	22442	47587	1.78%	0.249%

Data Path : Z:\SVOASRV\HPCHEM1\BNA_M\DATA\BM101318\
 Data File : BM017158.D
 Acq On : 13 Oct 2018 21:46
 Operator : MJ/SJ
 Sample : J5400-17
 Misc :
 ALS Vial : 18 Sample Multiplier: 1

Instrument :
 BNA_M
 ClientSampleId :
 C0BF5

Integration Parameters: LSCINT.P

Integrator: RTE
 Smoothing : OFF
 Sampling : 1
 Start Thrs: 0.2
 Stop Thrs : 0

Filtering: 5
 Min Area: 0.1 % of largest Peak
 Max Peaks: 100
 Peak Location: TOP

If leading or trailing edge < 100 prefer < Baseline drop else tangent >
 Peak separation: 5

Method : Z:\SVOASRV\HPCHEM1\BNA_M\METHODS\SOM-EPA-BM100418MA.M
 Title : SVOA CALIBRATION

35	11.486	1438	1445	1450	rBV2	58990	101894	3.80%	0.532%
36	11.745	1484	1489	1495	rBV5	7898	12992	0.48%	0.068%
37	11.892	1506	1514	1524	rBV	186986	283910	10.59%	1.483%
38	11.975	1524	1528	1529	rVV3	5519	6219	0.23%	0.032%
39	12.033	1533	1538	1541	rVB6	9064	12438	0.46%	0.065%
40	12.116	1546	1552	1559	rVB4	21281	44051	1.64%	0.230%
41	12.180	1559	1563	1565	rBV3	5179	7668	0.29%	0.040%
42	12.198	1565	1566	1573	rVB4	4802	6968	0.26%	0.036%
43	12.263	1573	1577	1579	rBV3	5054	6130	0.23%	0.032%
44	12.286	1579	1581	1586	rVB5	4633	5595	0.21%	0.029%
45	12.345	1586	1591	1595	rBV5	7275	15435	0.58%	0.081%
46	12.380	1595	1597	1605	rVB6	5996	7330	0.27%	0.038%
47	12.486	1610	1615	1617	rBV6	2634	3131	0.12%	0.016%
48	12.533	1617	1623	1627	rBV6	19252	32803	1.22%	0.171%
49	12.592	1627	1633	1638	rVB5	15860	33262	1.24%	0.174%
50	12.639	1638	1641	1647	rVB2	14698	18909	0.71%	0.099%
51	12.716	1650	1654	1659	rBV3	25004	37588	1.40%	0.196%
52	12.804	1664	1669	1673	rVV3	21897	36425	1.36%	0.190%
53	12.857	1673	1678	1683	rVV	69523	103842	3.88%	0.543%
54	12.904	1684	1686	1694	rVB7	6556	11437	0.43%	0.060%
55	13.098	1716	1719	1720	rVV3	4582	3424	0.13%	0.018%
56	13.151	1720	1728	1740	rVV	229326	351264	13.11%	1.835%
57	13.239	1740	1743	1746	rBV4	12661	16394	0.61%	0.086%
58	13.316	1753	1756	1762	rVB5	10402	15020	0.56%	0.078%
59	13.392	1764	1769	1776	rVB7	9119	19017	0.71%	0.099%
60	13.457	1776	1780	1783	rBV5	6489	10937	0.41%	0.057%
61	13.498	1783	1787	1790	rVB5	5866	9284	0.35%	0.049%
62	13.539	1790	1794	1800	rBV5	8922	16497	0.62%	0.086%
63	13.680	1809	1818	1822	rBV6	15218	33305	1.24%	0.174%
64	13.727	1822	1826	1832	rVV4	18011	31220	1.17%	0.163%
65	13.816	1832	1841	1845	rVV	81365	147661	5.51%	0.772%
66	13.857	1845	1848	1857	rVB3	33728	49394	1.84%	0.258%
67	13.933	1857	1861	1865	rVB2	20746	25745	0.96%	0.135%
68	13.986	1865	1870	1873	rBV7	6593	13196	0.49%	0.069%
69	14.027	1873	1877	1882	rVB6	5849	7209	0.27%	0.038%
70	14.157	1895	1899	1901	rBV4	10673	18238	0.68%	0.095%
71	14.233	1906	1912	1918	rBV	243949	315468	11.77%	1.648%

Data Path : Z:\SVOASRV\HPCHEM1\BNA_M\DATA\BM101318\
 Data File : BM017158.D
 Acq On : 13 Oct 2018 21:46
 Operator : MJ/SJ
 Sample : J5400-17
 Misc :
 ALS Vial : 18 Sample Multiplier: 1

Instrument :
 BNA_M
 ClientSampleId :
 C0BF5

Integration Parameters: LSCINT.P

Integrator: RTE
 Smoothing : OFF
 Sampling : 1
 Start Thrs: 0.2
 Stop Thrs : 0

Filtering: 5
 Min Area: 0.1 % of largest Peak
 Max Peaks: 100
 Peak Location: TOP

If leading or trailing edge < 100 prefer < Baseline drop else tangent >
 Peak separation: 5

Method : Z:\SVOASRV\HPCHEM1\BNA_M\METHODS\SOM-EPA-BM100418MA.M
 Title : SVOA CALIBRATION

72	14.327	1920	1928	1939	rVV2	1631381	2578323	96.22%	13.471%
73	14.422	1942	1944	1947	rVB3	5237	5813	0.22%	0.030%
74	14.492	1954	1956	1958	rBV2	3630	3146	0.12%	0.016%
75	14.574	1965	1970	1972	rVB3	6664	8385	0.31%	0.044%
76	14.686	1979	1989	1994	rBV8	18732	54508	2.03%	0.285%
77	14.739	1994	1998	2001	rVV4	24762	35229	1.31%	0.184%
78	14.792	2004	2007	2011	rVV6	12645	18372	0.69%	0.096%
79	14.822	2011	2012	2014	rVV2	5391	5301	0.20%	0.028%
80	14.857	2014	2018	2023	rVB3	46514	70267	2.62%	0.367%
81	14.927	2025	2030	2034	rBV4	11453	16383	0.61%	0.086%
82	14.974	2037	2038	2041	rVB3	4892	5131	0.19%	0.027%
83	15.039	2045	2049	2050	rBV3	9278	10070	0.38%	0.053%
84	15.186	2070	2074	2079	rBV	167227	218303	8.15%	1.141%
85	15.280	2088	2090	2094	rVB5	7827	9963	0.37%	0.052%
86	15.327	2094	2098	2101	rVB5	9678	15160	0.57%	0.079%
87	15.380	2101	2107	2108	rBV5	9230	12727	0.47%	0.066%
88	15.404	2109	2111	2112	rBV2	6160	3805	0.14%	0.020%
89	15.463	2119	2121	2122	rBV2	3890	3224	0.12%	0.017%
90	15.598	2137	2144	2149	rBV	80157	145489	5.43%	0.760%
91	15.686	2156	2159	2165	rVB6	16307	22800	0.85%	0.119%
92	15.745	2166	2169	2174	rBV5	18797	33859	1.26%	0.177%
93	15.810	2176	2180	2184	rBV6	24366	37639	1.40%	0.197%
94	15.980	2205	2209	2211	rBV5	15424	23192	0.87%	0.121%
95	16.057	2217	2222	2223	rBV	166815	208053	7.76%	1.087%
96	16.845	2353	2356	2360	rBV2	84410	116357	4.34%	0.608%
97	16.898	2362	2365	2373	rVB	118347	187978	7.01%	0.982%
98	17.074	2390	2395	2415	rBV2	1660047	2679711	100.00%	14.001%
99	21.268	3103	3108	3118	rBV	1678516	2385597	89.02%	12.465%
100	23.492	3481	3486	3493	rVB2	1202376	2203372	82.22%	11.512%

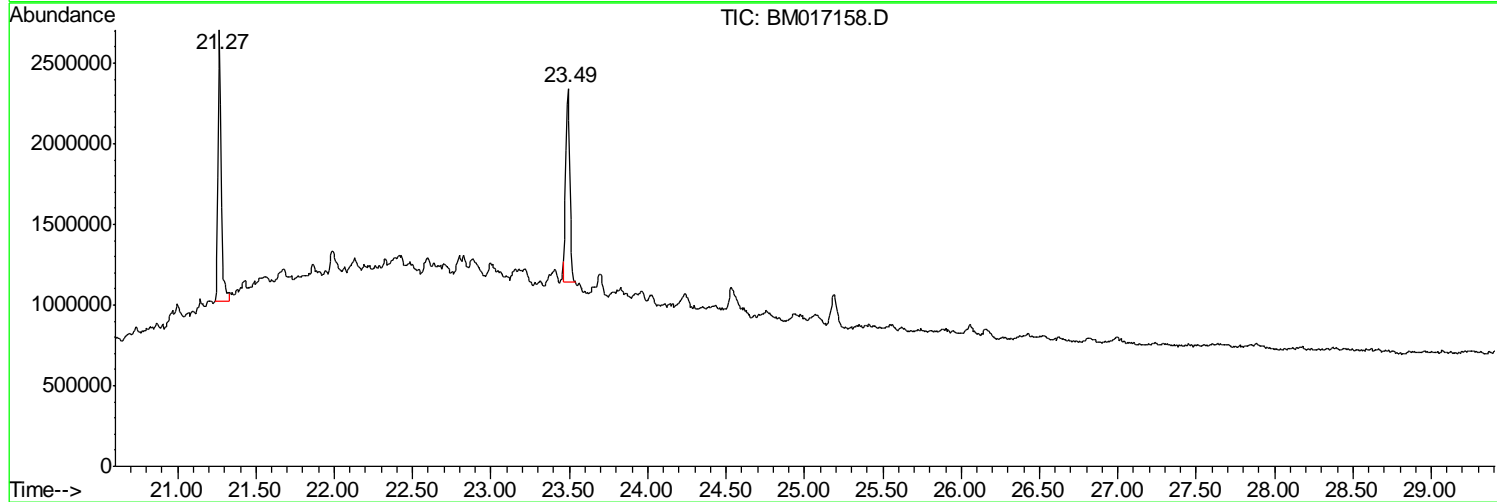
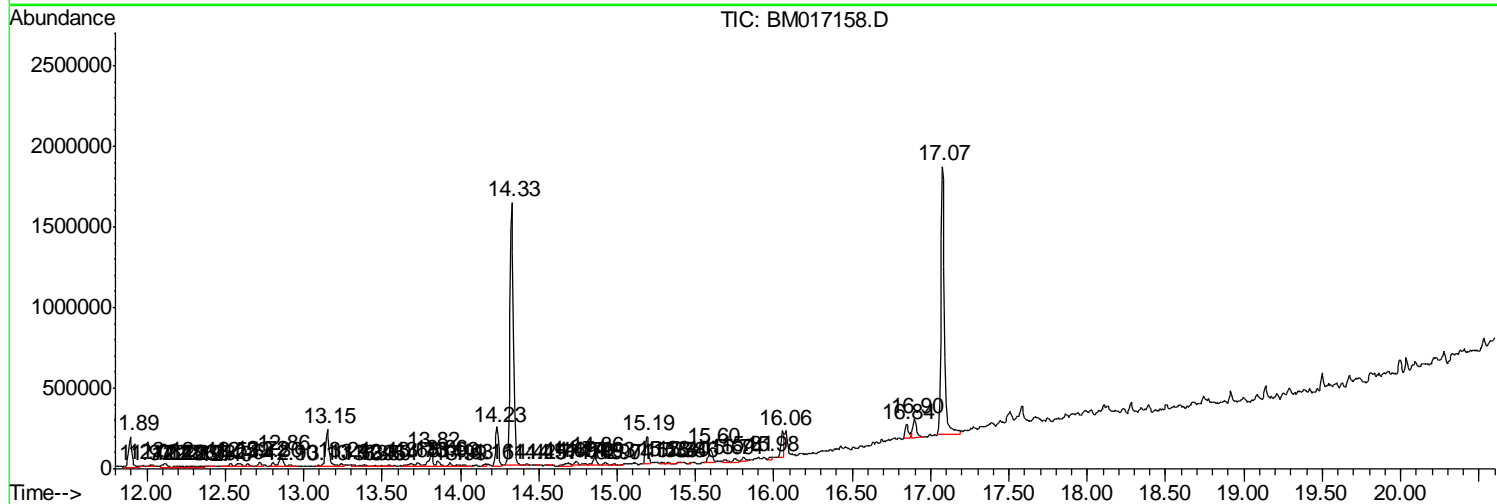
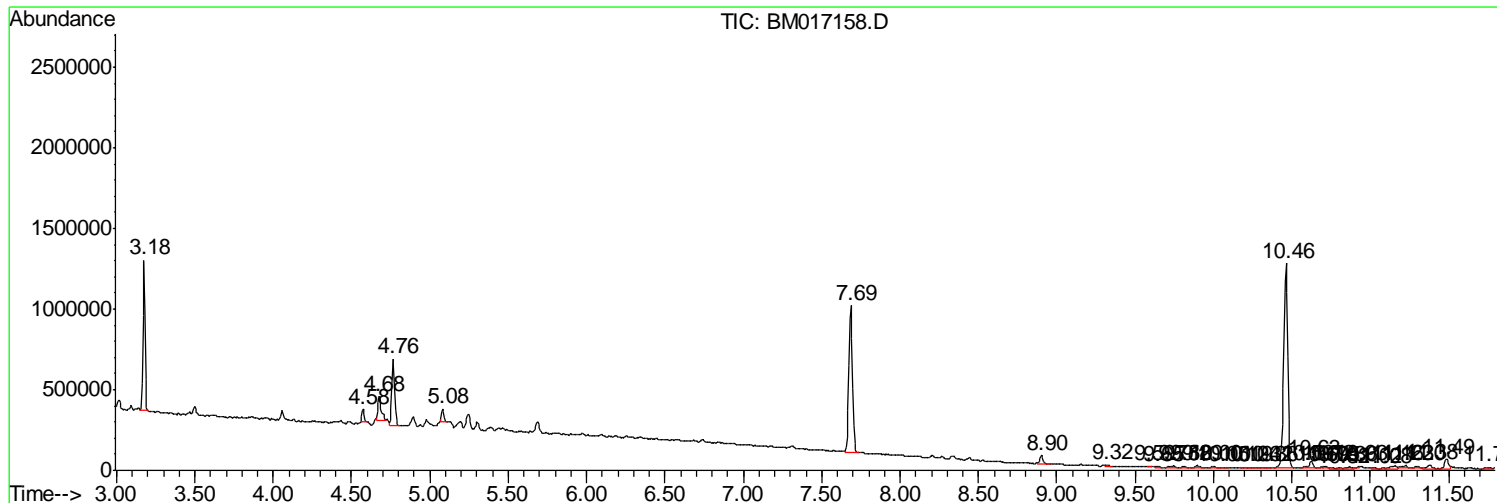
Sum of corrected areas: 19139113

Data Path : Z:\SVOASRV\HPCHEM1\BNA_M\DATA\BM101318\
 Data File : BM017158.D
 Acq On : 13 Oct 2018 21:46
 Operator : MJ/SJ
 Sample : J5400-17
 Misc :
 ALS Vial : 18 Sample Multiplier: 1

Instrument :
 BNA_M
 ClientSampleId :
 C0BF5

Quant Method : Z:\SVOASRV\HPCHEM1\BNA_M\METHODS\SOM-EPA-BM100418MA.M
 Quant Title : SVOA CALIBRATION

TIC Library : C:\DATABASE\NIST02.L
 TIC Integration Parameters: LSCINT.P



Data Path : Z:\SVOASRV\HPCHEM1\BNA_M\DATA\BM101318\
 Data File : BM017158.D
 Acq On : 13 Oct 2018 21:46
 Operator : MJ/SJ
 Sample : J5400-17
 Misc :
 ALS Vial : 18 Sample Multiplier: 1

Instrument :
 BNA_M
 ClientSampleId :
 C0BF5

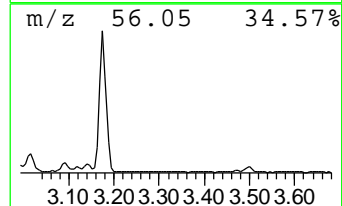
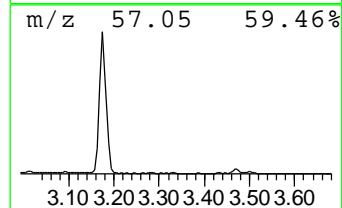
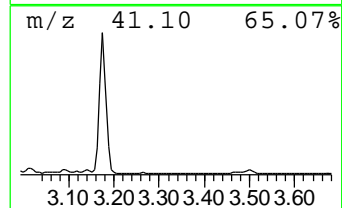
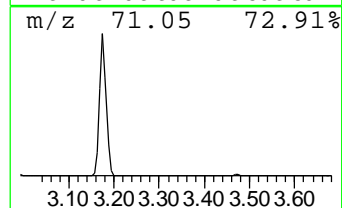
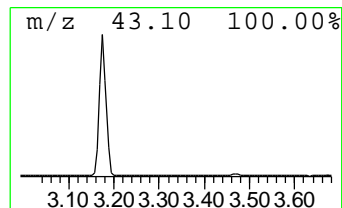
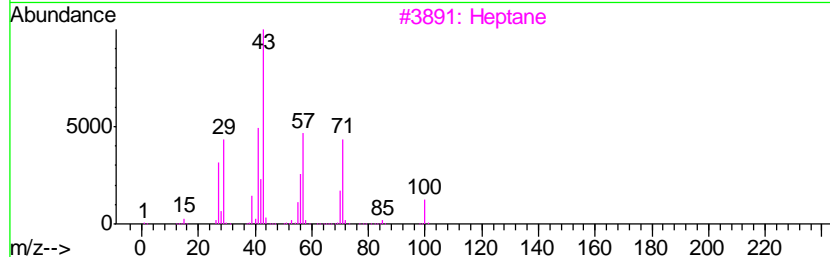
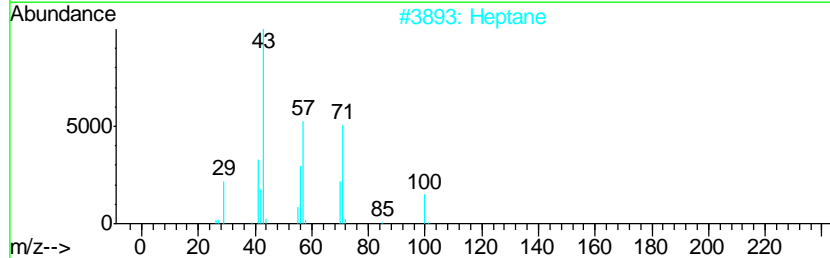
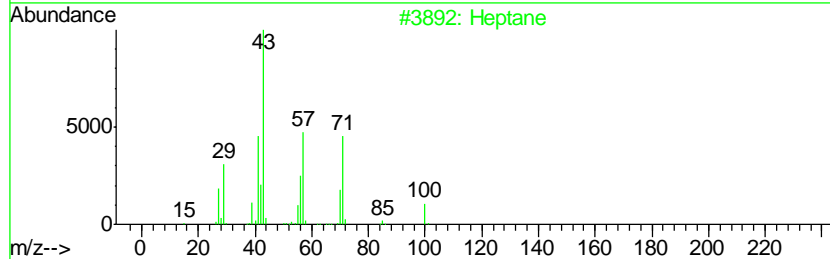
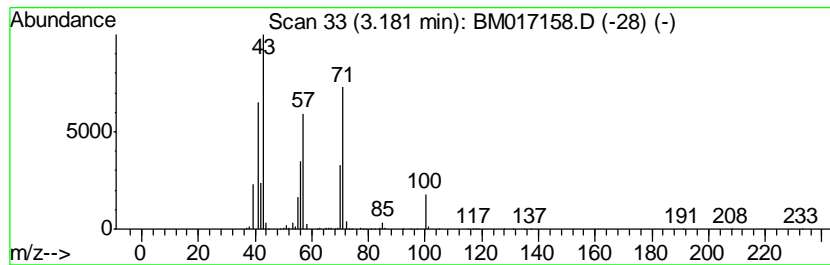
Quant Method : Z:\SVOASRV\HPCHEM1\BNA_M\METHODS\SOM-EPA-BM100418MA.M
 Quant Title : SVOA CALIBRATION

TIC Library : C:\DATABASE\NIST02.L
 TIC Integration Parameters: LSCINT.P

 Peak Number 1 (DEL) Alkane: Straight-Chai... Concentration Rank 1

R.T.	EstConc	Area	Relative to ISTD	R.T.
3.18	12.55 ng/ul	885611	1,4-Dichlorobenzene-d4	7.69

Hit#	of	Tentative ID	MW	MolForm	CAS#	Qual
1	5	Heptane	100	C7H16	000142-82-5	91
2		Heptane	100	C7H16	000142-82-5	91
3		Heptane	100	C7H16	000142-82-5	90
4		Heptane	100	C7H16	000142-82-5	86
5		Hexane, 3-methyl-	100	C7H16	000589-34-4	64



Data Path : Z:\SVOASRV\HPCHEM1\BNA_M\DATA\BM101318\
 Data File : BM017158.D
 Acq On : 13 Oct 2018 21:46
 Operator : MJ/SJ
 Sample : J5400-17
 Misc :
 ALS Vial : 18 Sample Multiplier: 1

Instrument :
 BNA_M
 ClientSampled :
 C0BF5

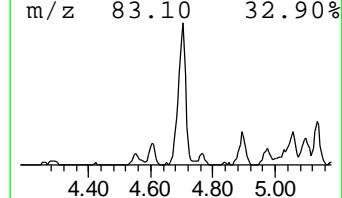
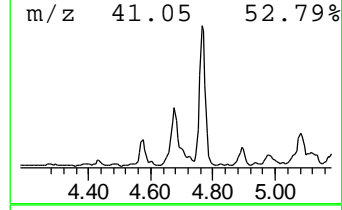
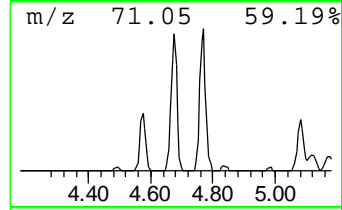
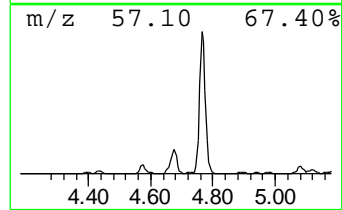
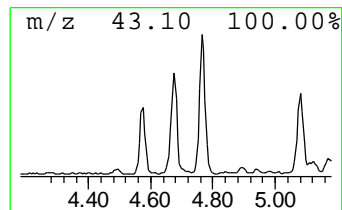
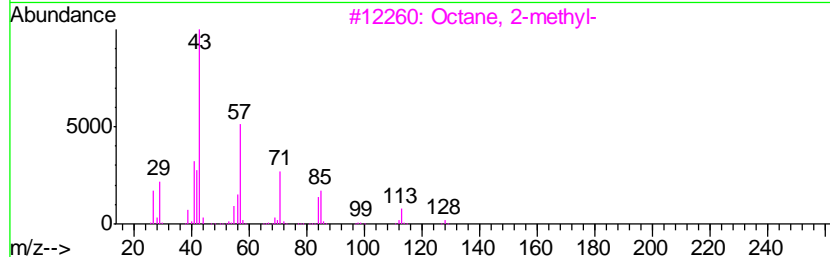
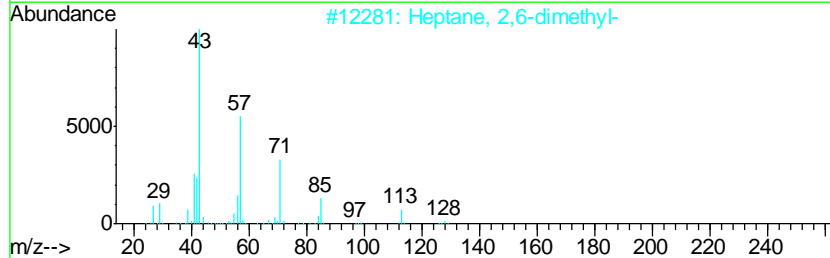
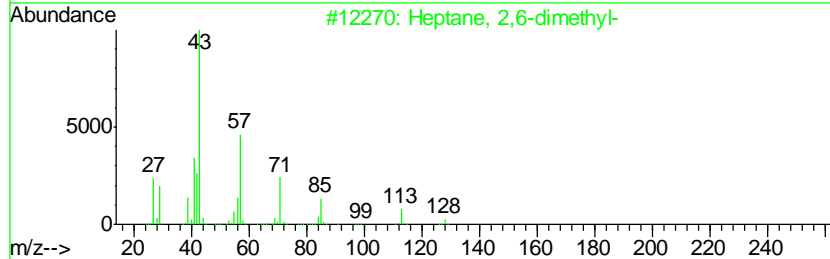
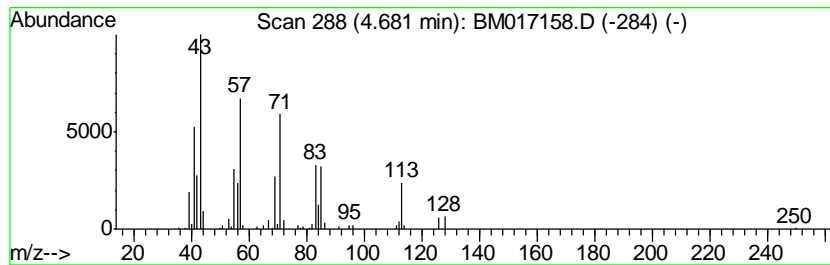
Quant Method : Z:\SVOASRV\HPCHEM1\BNA_M\METHODS\SOM-EPA-BM100418MA.M
 Quant Title : SVOA CALIBRATION

TIC Library : C:\DATABASE\NIST02.L
 TIC Integration Parameters: LSCINT.P

 Peak Number 2 (DEL) Alkane: Straight-Chai... Concentration Rank 3

R.T.	EstConc	Area	Relative to ISTD	R.T.
4.68	3.31 ng/ul	233945	1,4-Dichlorobenzene-d4	7.69

Hit#	of	Tentative ID	MW	MolForm	CAS#	Qual
1	5	Heptane, 2,6-dimethyl-	128	C9H20	001072-05-5	93
2		Heptane, 2,6-dimethyl-	128	C9H20	001072-05-5	93
3		Octane, 2-methyl-	128	C9H20	003221-61-2	87
4		Octane, 2-methyl-	128	C9H20	003221-61-2	87
5		Heptadecane, 2-methyl-	254	C18H38	001560-89-0	53



Data Path : Z:\SVOASRV\HPCHEM1\BNA_M\DATA\BM101318\
 Data File : BM017158.D
 Acq On : 13 Oct 2018 21:46
 Operator : MJ/SJ
 Sample : J5400-17
 Misc :
 ALS Vial : 18 Sample Multiplier: 1

Instrument :
 BNA_M
 ClientSampleID :
 C0BF5

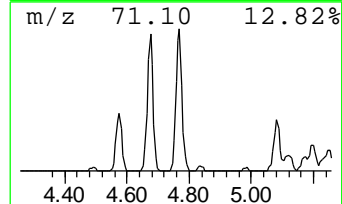
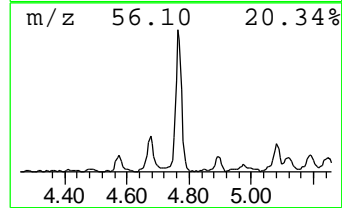
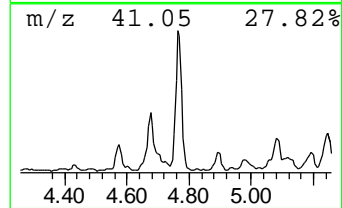
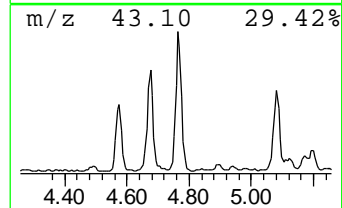
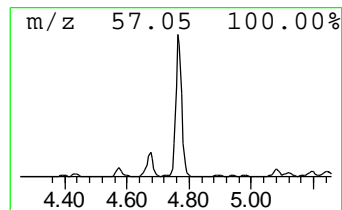
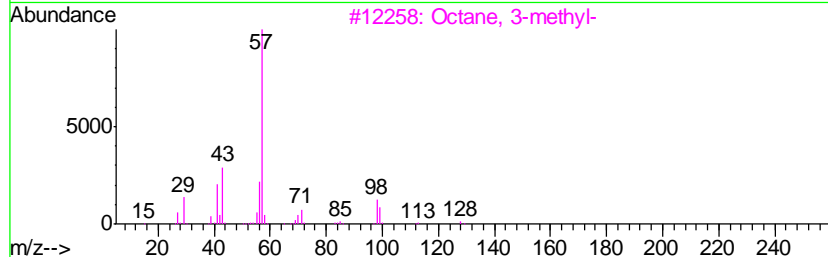
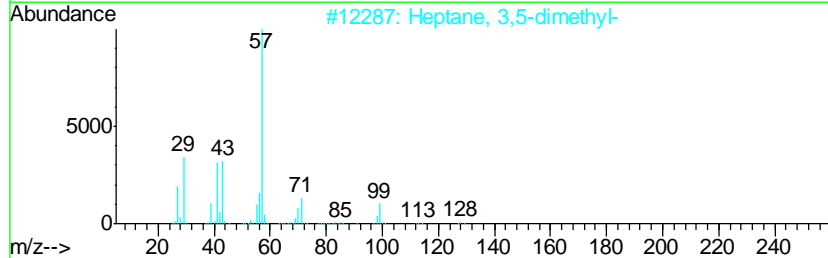
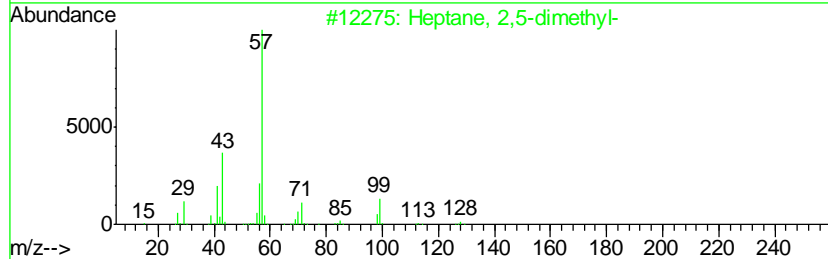
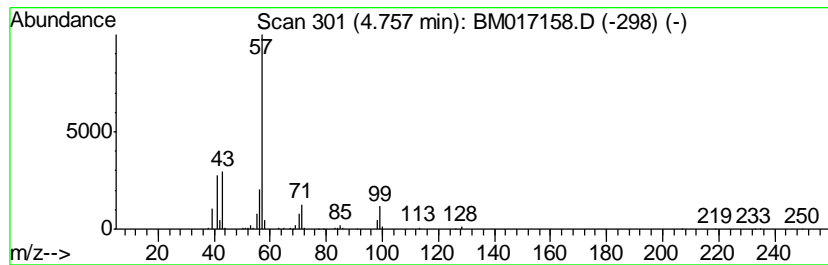
Quant Method : Z:\SVOASRV\HPCHEM1\BNA_M\METHODS\SOM-EPA-BM100418MA.M
 Quant Title : SVOA CALIBRATION

TIC Library : C:\DATABASE\NIST02.L
 TIC Integration Parameters: LSCINT.P

 Peak Number 3 (DEL) Alkane: Straight-Chai... Concentration Rank 2

R.T.	EstConc	Area	Relative to ISTD	R.T.
4.76	7.84 ng/ul	553339	1,4-Dichlorobenzene-d4	7.69

Hit#	of	Tentative ID	MW	MolForm	CAS#	Qual
1	5	Heptane, 2,5-dimethyl-	128	C9H20	002216-30-0	91
2		Heptane, 3,5-dimethyl-	128	C9H20	000926-82-9	90
3		Octane, 3-methyl-	128	C9H20	002216-33-3	90
4		Heptane, 2,5-dimethyl-	128	C9H20	002216-30-0	87
5		Heptane, 3,5-dimethyl-	128	C9H20	000926-82-9	81



Data Path : Z:\SVOASRV\HPCHEM1\BNA_M\DATA\BM101318\
 Data File : BM017158.D
 Acq On : 13 Oct 2018 21:46
 Operator : MJ/SJ
 Sample : J5400-17
 Misc :
 ALS Vial : 18 Sample Multiplier: 1

Instrument :
 BNA_M
 ClientSampleId :
 C0BF5

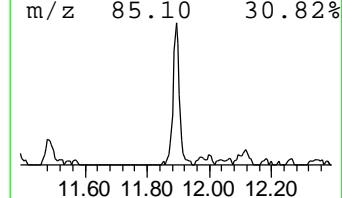
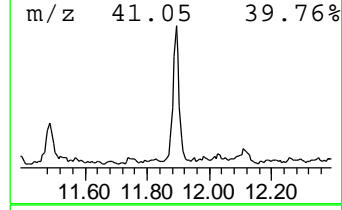
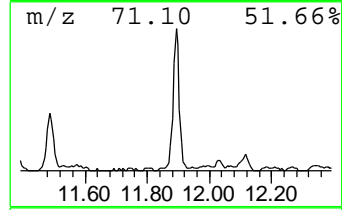
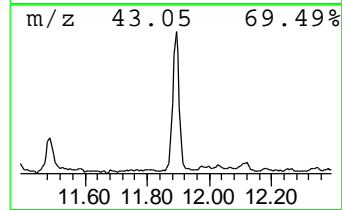
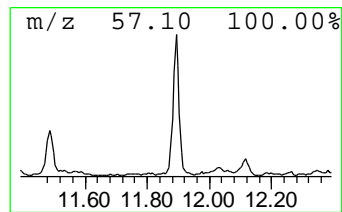
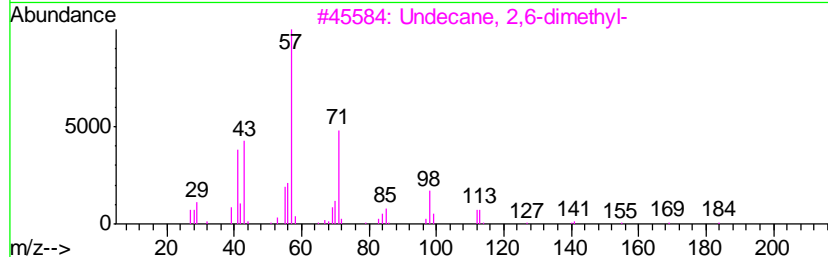
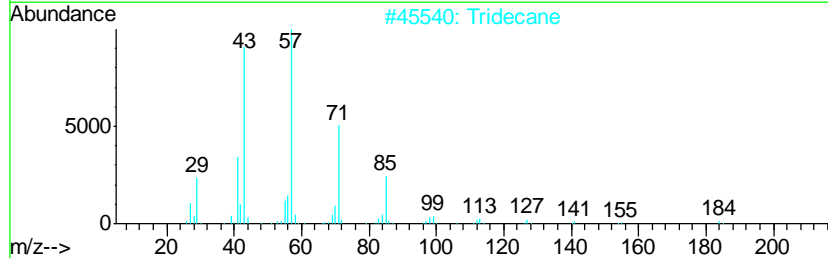
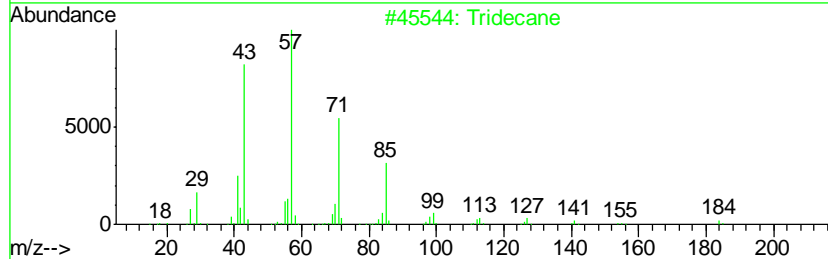
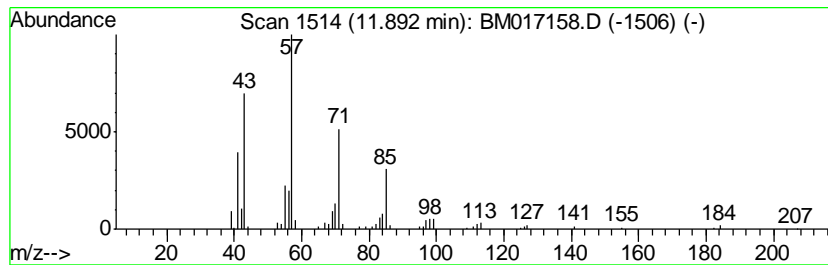
Quant Method : Z:\SVOASRV\HPCHEM1\BNA_M\METHODS\SOM-EPA-BM100418MA.M
 Quant Title : SVOA CALIBRATION

TIC Library : C:\DATABASE\NIST02.L
 TIC Integration Parameters: LSCINT.P

 Peak Number 4 (DEL) Alkane: Straight-Chai... Concentration Rank 5

R.T.	EstConc	Area	Relative to ISTD	R.T.
11.89	2.45 ng/ul	283910	Naphthalene-d8	10.46

Hit#	of	Tentative ID	MW	MolForm	CAS#	Qual
1	5	Tridecane	184	C13H28	000629-50-5	94
2		Tridecane	184	C13H28	000629-50-5	93
3		Undecane, 2,6-dimethyl-	184	C13H28	017301-23-4	83
4		Hexadecane	226	C16H34	000544-76-3	80
5		Hexadecane	226	C16H34	000544-76-3	80



Data Path : Z:\SVOASRV\HPCHEM1\BNA_M\DATA\BM101318\
 Data File : BM017158.D
 Acq On : 13 Oct 2018 21:46
 Operator : MJ/SJ
 Sample : J5400-17
 Misc :
 ALS Vial : 18 Sample Multiplier: 1

Instrument :
 BNA_M
 ClientSampleID :
 C0BF5

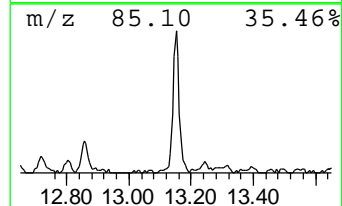
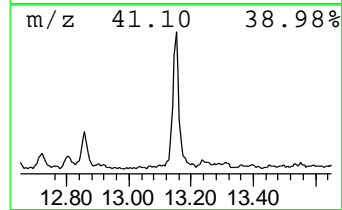
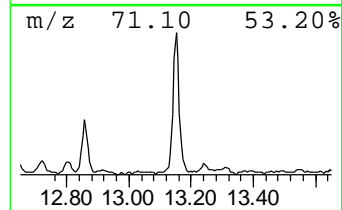
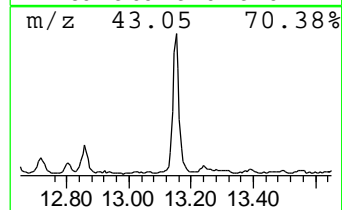
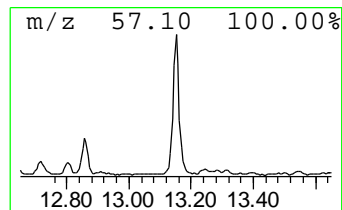
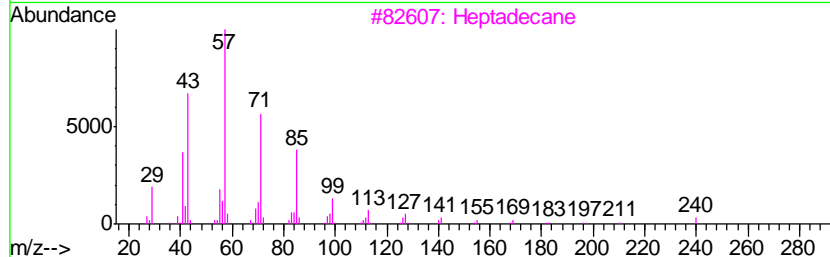
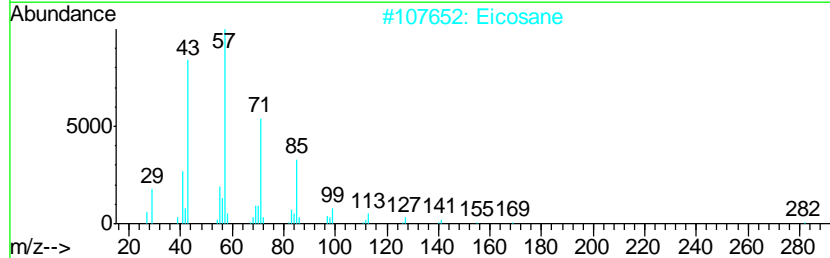
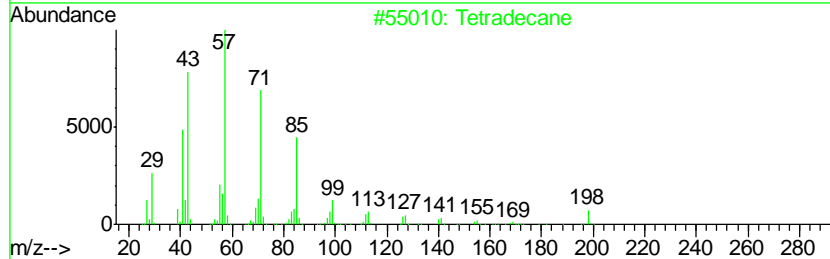
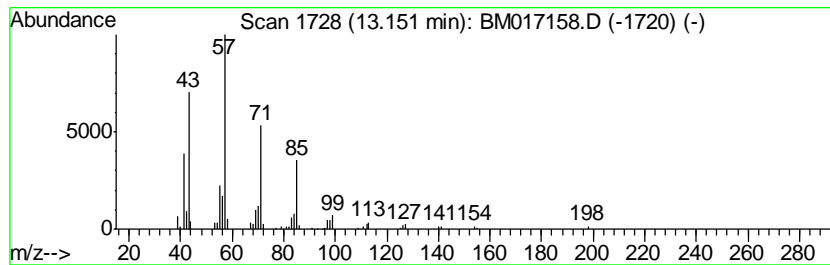
Quant Method : Z:\SVOASRV\HPCHEM1\BNA_M\METHODS\SOM-EPA-BM100418MA.M
 Quant Title : SVOA CALIBRATION

TIC Library : C:\DATABASE\NIST02.L
 TIC Integration Parameters: LSCINT.P

 Peak Number 5 (DEL) Alkane: Straight-Chai... Concentration Rank 4

R.T.	EstConc	Area	Relative to ISTD	R.T.
13.15	2.72 ng/ul	351264	Acenaphthene-d10	14.33

Hit#	of	Tentative ID	MW	MolForm	CAS#	Qual
1	5	Tetradecane	198	C14H30	000629-59-4	93
2		Eicosane	282	C20H42	000112-95-8	90
3		Heptadecane	240	C17H36	000629-78-7	90
4		Tridecane	184	C13H28	000629-50-5	90
5		Hexadecane	226	C16H34	000544-76-3	87



Data Path : Z:\SVOASRV\HPCHEM1\BNA_M\DATA\BM101318\
 Data File : BM017158.D
 Acq On : 13 Oct 2018 21:46
 Operator : MJ/SJ
 Sample : J5400-17
 Misc :
 ALS Vial : 18 Sample Multiplier: 1

Instrument :
 BNA_M
 ClientSampleID :
 C0BF5

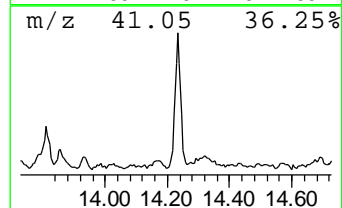
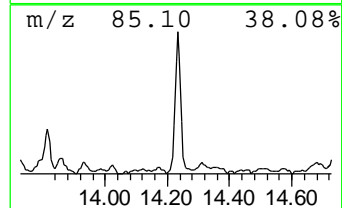
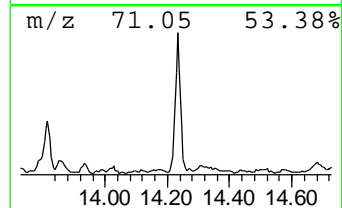
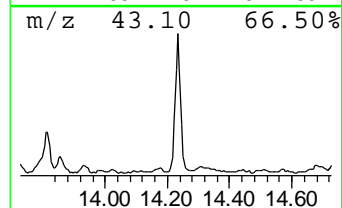
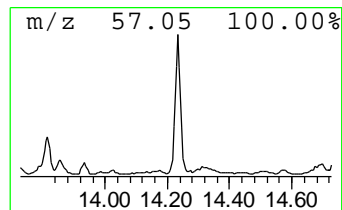
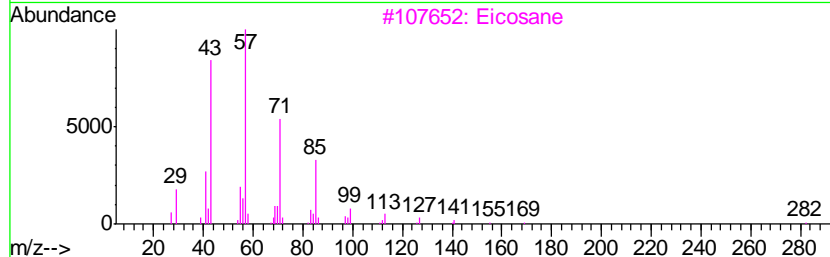
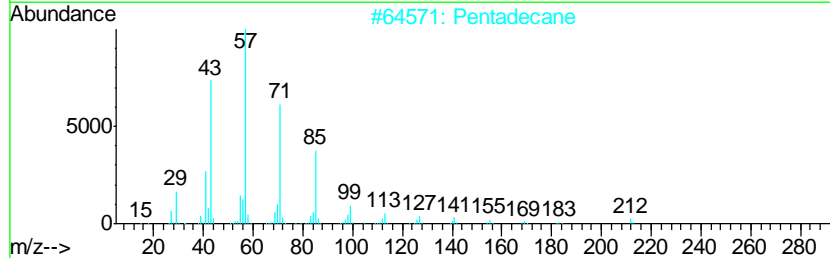
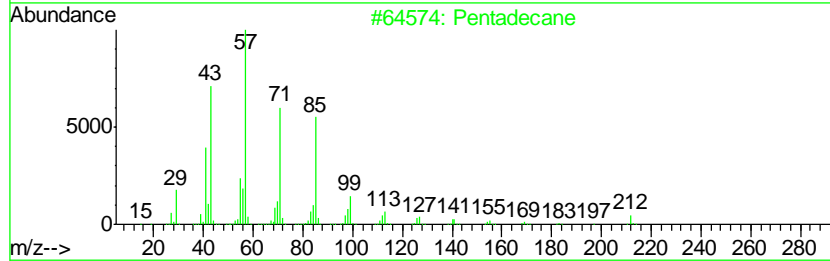
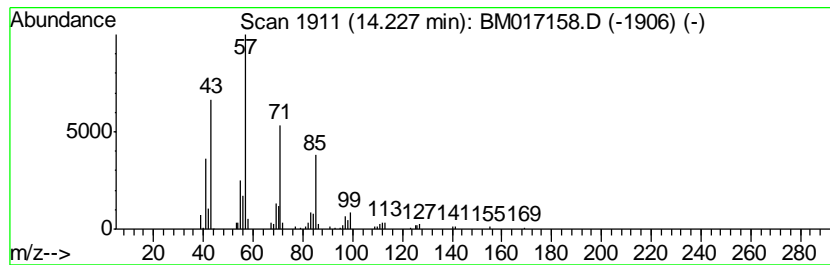
Quant Method : Z:\SVOASRV\HPCHEM1\BNA_M\METHODS\SOM-EPA-BM100418MA.M
 Quant Title : SVOA CALIBRATION

TIC Library : C:\DATABASE\NIST02.L
 TIC Integration Parameters: LSCINT.P

 Peak Number 6 (DEL) Alkane: Straight-Chai... Concentration Rank 6

R.T.	EstConc	Area	Relative to ISTD	R.T.
14.23	2.45 ng/ul	315468	Acenaphthene-d10	14.33

Hit#	of	Tentative ID	MW	MolForm	CAS#	Qual
1	5	Pentadecane	212	C15H32	000629-62-9	97
2		Pentadecane	212	C15H32	000629-62-9	93
3		Eicosane	282	C20H42	000112-95-8	91
4		Hexadecane	226	C16H34	000544-76-3	91
5		10-Methylnonadecane	282	C20H42	056862-62-5	91



Data Path : Z:\SVOASRV\HPCHEM1\BNA_M\DATA\BM101318\
Data File : BM017158.D
Acq On : 13 Oct 2018 21:46
Operator : MJ/SJ
Sample : J5400-17
Misc :
ALS Vial : 18 Sample Multiplier: 1

Instrument :
BNA_M
ClientSampleId :
C0BF5

Quant Method : Z:\SVOASRV\HPCHEM1\BNA_M\METHODS\SOM-EPA-BM100418MA.M
Quant Title : SVOA CALIBRATION

TIC Library : C:\DATABASE\NIST02.L
TIC Integration Parameters: LSCINT.P

TIC Top Hit name	RT	EstConc	Units	Response	--Internal Standard--			
					#	RT	Resp	Conc
(DEL) Alkane: Str...	3.18	12.6	ng/ul	885611	1	7.69	1411570	20.0
(DEL) Alkane: Str...	4.68	3.3	ng/ul	233945	1	7.69	1411570	20.0
(DEL) Alkane: Str...	4.76	7.8	ng/ul	553339	1	7.69	1411570	20.0
(DEL) Alkane: Str...	11.89	2.5	ng/ul	283910	2	10.46	2314850	20.0
(DEL) Alkane: Str...	13.15	2.7	ng/ul	351264	3	14.33	2578320	20.0
(DEL) Alkane: Str...	14.23	2.5	ng/ul	315468	3	14.33	2578320	20.0