

Data Path : Z:\svoasrv\HPCHEM1\BNA\_M\Data\BM101424\  
 Data File : BM048039.D  
 Acq On : 14 Oct 2024 22:11  
 Operator : RC/JU  
 Sample : P4238-03  
 Misc :  
 ALS Vial : 16 Sample Multiplier: 1

Instrument :  
 BNA\_M  
 ClientSampleId :  
 A4F13

Integration Parameters: LSCINT.P

Integrator: RTE  
 Smoothing : OFF  
 Sampling : 1  
 Start Thrs: 0.2  
 Stop Thrs : 0

Filtering: 5  
 Min Area: 0.1 % of largest Peak  
 Max Peaks: 100  
 Peak Location: TOP

If leading or trailing edge < 100 prefer < Baseline drop else tangent >  
 Peak separation: 5

Method : Z:\svoasrv\HPCHEM1\BNA\_M\Methods\SFAM-EPA-BM092724.MA.M  
 Title : SVOA CALIBRATION

Signal : TIC: BM048039.D\data.ms

peak #	R.T. min	first scan	max scan	last scan	PK TY	peak height	corr. area	corr. % max.	% of total
1	3.240	40	43	49	rVB	29472	39745	0.79%	0.080%
2	3.669	112	116	121	rBV2	31522	47687	0.95%	0.097%
3	3.757	127	131	135	rBV	40658	51174	1.02%	0.104%
4	3.981	165	169	174	rVB	23626	33029	0.66%	0.067%
5	4.422	242	244	249	rVB2	7362	9826	0.20%	0.020%
6	4.540	260	264	268	rVB5	9995	15693	0.31%	0.032%
7	4.775	300	304	313	rVB3	20942	34838	0.69%	0.071%
8	4.893	320	324	331	rVB	49159	76941	1.53%	0.156%
9	6.046	515	520	526	rVB2	35687	55370	1.10%	0.112%
10	6.357	569	573	580	rBV9	6490	15742	0.31%	0.032%
11	6.793	639	647	653	rBV9	10280	28746	0.57%	0.058%
12	6.957	664	675	688	rBV	410077	739918	14.76%	1.498%
13	7.110	695	701	714	rVB	345859	567933	11.33%	1.150%
14	7.316	730	736	747	rBV	452353	738584	14.73%	1.495%
15	7.416	750	753	758	rVB6	7871	10582	0.21%	0.021%
16	7.604	781	785	792	rBV5	5655	10752	0.21%	0.022%
17	7.781	808	815	824	rBV	1009332	1633853	32.59%	3.307%
18	8.151	874	878	882	rBV6	10413	16433	0.33%	0.033%
19	8.275	894	899	904	rBV7	8334	11503	0.23%	0.023%
20	8.492	929	936	944	rBV	451525	755935	15.08%	1.530%
21	8.604	949	955	962	rVB	48722	89962	1.79%	0.182%
22	8.934	1004	1011	1023	rVV	359921	656958	13.10%	1.330%
23	9.369	1081	1085	1092	rVB3	10818	18726	0.37%	0.038%
24	9.504	1103	1108	1121	rVB4	24107	48477	0.97%	0.098%
25	9.657	1127	1134	1146	rBV	302104	543760	10.85%	1.101%
26	10.198	1219	1226	1243	rBV	447596	849486	16.94%	1.719%
27	10.575	1282	1290	1297	rBV	1313937	2247991	44.84%	4.550%
28	10.710	1307	1313	1328	rBV	286200	589227	11.75%	1.193%
29	11.128	1378	1384	1394	rBV10	10227	26189	0.52%	0.053%
30	12.169	1555	1561	1565	rBV4	7015	13611	0.27%	0.028%
31	12.245	1568	1574	1579	rBV4	10595	19538	0.39%	0.040%
32	12.463	1605	1611	1616	rBV2	13645	23623	0.47%	0.048%
33	13.257	1741	1746	1749	rBV5	9001	13219	0.26%	0.027%
34	13.592	1796	1803	1810	rBV8	9365	21965	0.44%	0.044%
35	13.745	1822	1829	1833	rBV4	18996	33318	0.66%	0.067%
36	13.827	1833	1843	1860	rVB	809729	1168976	23.32%	2.366%

Data Path : Z:\svoasrv\HPCHEM1\BNA\_M\Data\BM101424\  
 Data File : BM048039.D  
 Acq On : 14 Oct 2024 22:11  
 Operator : RC/JU  
 Sample : P4238-03  
 Misc :  
 ALS Vial : 16 Sample Multiplier: 1

Instrument :  
 BNA\_M  
 ClientSampleId :  
 A4F13

Integration Parameters: LSCINT.P

Integrator: RTE  
 Smoothing : OFF Filtering: 5  
 Sampling : 1 Min Area: 0.1 % of largest Peak  
 Start Thrs: 0.2 Max Peaks: 100  
 Stop Thrs : 0 Peak Location: TOP

If leading or trailing edge < 100 prefer < Baseline drop else tangent >  
 Peak separation: 5

Method : Z:\svoasrv\HPCHEM1\BNA\_M\Methods\SFAM-EPA-BM092724.MA.M  
 Title : SVOA CALIBRATION

37	14.110	1881	1891	1905	rBV	963858	1573732	31.39%	3.185%
38	14.322	1925	1927	1933	rVB7	8194	12644	0.25%	0.026%
39	14.422	1933	1944	1950	rBV	1901898	2873018	57.31%	5.815%
40	14.480	1950	1954	1963	rVV	105213	180180	3.59%	0.365%
41	14.551	1963	1966	1970	rVV4	7446	10662	0.21%	0.022%
42	14.633	1973	1980	1992	rBV2	192608	440257	8.78%	0.891%
43	14.727	1993	1996	2000	rVV2	24481	45457	0.91%	0.092%
44	14.774	2002	2004	2007	rVV4	14421	22848	0.46%	0.046%
45	14.821	2007	2012	2021	rVV	34485	90483	1.80%	0.183%
46	14.898	2021	2025	2031	rVB7	10861	17107	0.34%	0.035%
47	15.086	2054	2057	2063	rVB8	10578	16071	0.32%	0.033%
48	15.210	2073	2078	2087	rBV8	11990	30960	0.62%	0.063%
49	15.410	2104	2112	2118	rBV	1233598	1821287	36.33%	3.686%
50	15.469	2118	2122	2127	rVV2	106220	174924	3.49%	0.354%
51	15.533	2128	2133	2140	rVV	216008	340229	6.79%	0.689%
52	15.592	2140	2143	2146	rVV	24267	34205	0.68%	0.069%
53	15.627	2146	2149	2154	rVV5	24236	46714	0.93%	0.095%
54	15.674	2154	2157	2161	rVV5	19947	30742	0.61%	0.062%
55	15.716	2161	2164	2167	rVV4	9222	14320	0.29%	0.029%
56	15.774	2168	2174	2182	rVB	345170	506046	10.09%	1.024%
57	15.910	2192	2197	2203	rVB4	16865	34269	0.68%	0.069%
58	16.145	2231	2237	2243	rVB10	16533	37168	0.74%	0.075%
59	16.339	2266	2270	2274	rBV2	23634	32674	0.65%	0.066%
60	16.392	2274	2279	2283	rVV5	9697	19928	0.40%	0.040%
61	16.468	2290	2292	2297	rVB3	23061	25119	0.50%	0.051%
62	16.515	2297	2300	2305	rVB4	19713	27579	0.55%	0.056%
63	16.563	2305	2308	2313	rBV6	10210	17127	0.34%	0.035%
64	16.621	2314	2318	2323	rVB4	17075	22585	0.45%	0.046%
65	16.668	2323	2326	2328	rBV4	9748	12719	0.25%	0.026%
66	16.698	2328	2331	2334	rVB5	11775	14869	0.30%	0.030%
67	16.815	2347	2351	2358	rVB3	26196	42716	0.85%	0.086%
68	16.915	2365	2368	2372	rVB3	27885	38385	0.77%	0.078%
69	16.980	2375	2379	2385	rVB2	60055	88175	1.76%	0.178%
70	17.074	2393	2395	2399	rVB5	15100	18349	0.37%	0.037%
71	17.163	2403	2410	2414	rBV	2236853	3452813	68.87%	6.989%
72	17.204	2414	2417	2421	rVV	967626	1335996	26.65%	2.704%
73	17.257	2421	2426	2430	rVV2	1375441	1987533	39.64%	4.023%
74	17.292	2430	2432	2438	rVV	224767	300042	5.98%	0.607%
75	17.351	2438	2442	2447	rVB4	30374	60848	1.21%	0.123%
76	17.562	2475	2478	2483	rVB	58013	77283	1.54%	0.156%

Data Path : Z:\svoasrv\HPCHEM1\BNA\_M\Data\BM101424\  
 Data File : BM048039.D  
 Acq On : 14 Oct 2024 22:11  
 Operator : RC/JU  
 Sample : P4238-03  
 Misc :  
 ALS Vial : 16 Sample Multiplier: 1

Instrument :  
 BNA\_M  
 ClientSampleId :  
 A4F13

Integration Parameters: LSCINT.P

Integrator: RTE  
 Smoothing : OFF Filtering: 5  
 Sampling : 1 Min Area: 0.1 % of largest Peak  
 Start Thrs: 0.2 Max Peaks: 100  
 Stop Thrs : 0 Peak Location: TOP

If leading or trailing edge < 100 prefer < Baseline drop else tangent >  
 Peak separation: 5

Method : Z:\svoasrv\HPCHEM1\BNA\_M\Methods\SFAM-EPA-BM092724.MA.M  
 Title : SVOA CALIBRATION

77	17.739	2504	2508	2511	rBV2	42658	70822	1.41%	0.143%
78	17.880	2528	2532	2539	rBV4	28979	56940	1.14%	0.115%
79	18.051	2553	2561	2564	rBV2	266460	559192	11.15%	1.132%
80	18.080	2564	2566	2572	rVB	192369	258074	5.15%	0.522%
81	18.162	2577	2580	2584	rVV2	59596	85757	1.71%	0.174%
82	18.227	2586	2591	2595	rVV3	239371	423670	8.45%	0.858%
83	18.262	2595	2597	2605	rVB	94571	151285	3.02%	0.306%
84	18.533	2639	2643	2647	rVV	93137	121759	2.43%	0.246%
85	18.574	2647	2650	2655	rVB3	51699	73360	1.46%	0.148%
86	18.780	2682	2685	2690	rVB3	50682	62992	1.26%	0.128%
87	18.951	2711	2714	2718	rBV2	55398	89624	1.79%	0.181%
88	19.092	2734	2738	2740	rBV3	47826	79467	1.59%	0.161%
89	19.215	2754	2759	2765	rVB	1347414	1784337	35.59%	3.612%
90	19.551	2810	2816	2818	rBV	1865310	2768579	55.22%	5.604%
91	19.574	2818	2820	2829	rVB	1178950	1494854	29.82%	3.026%
92	20.068	2901	2904	2910	rVB	253787	355304	7.09%	0.719%
93	20.168	2918	2921	2926	rBV2	221867	248757	4.96%	0.504%
94	21.062	3070	3073	3082	rVB3	320923	487458	9.72%	0.987%
95	21.286	3108	3111	3115	rVB	201129	233052	4.65%	0.472%
96	21.386	3121	3128	3132	rBV3	2885566	5013403	100.00%	10.148%
97	21.427	3132	3135	3149	rVB	636729	1016855	20.28%	2.058%
98	23.433	3472	3476	3482	rBV	286589	617209	12.31%	1.249%
99	24.174	3596	3602	3609	rBV	670973	1465747	29.24%	2.967%
100	24.380	3629	3637	3654	rVB	1794558	4698870	93.73%	9.511%

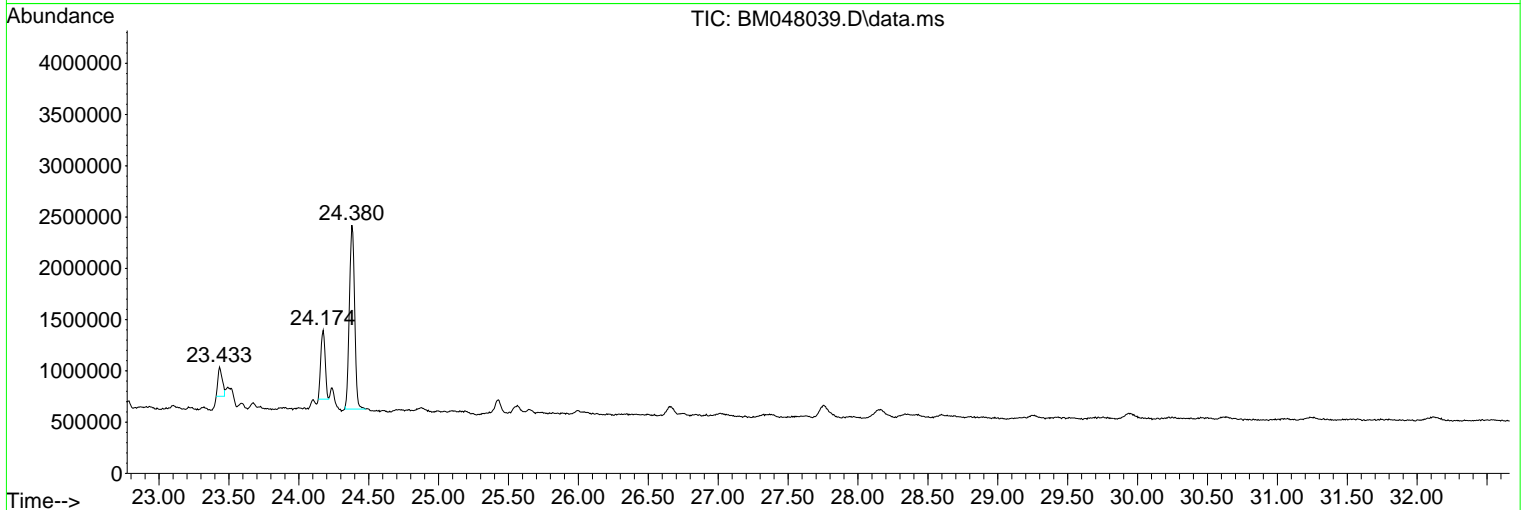
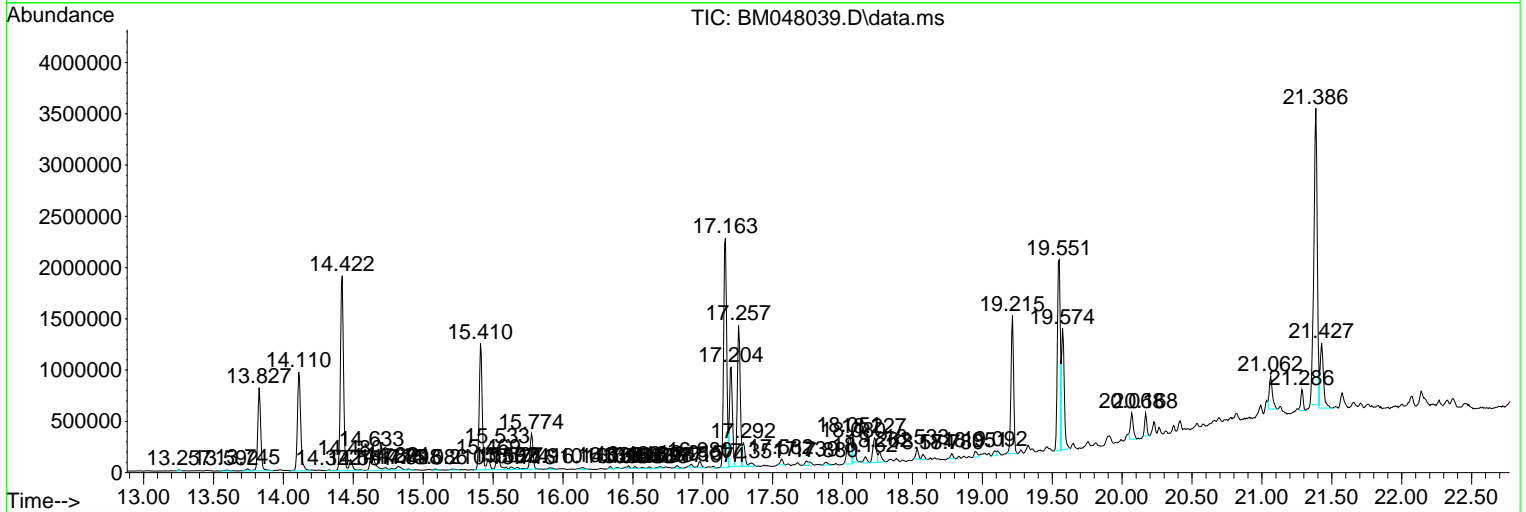
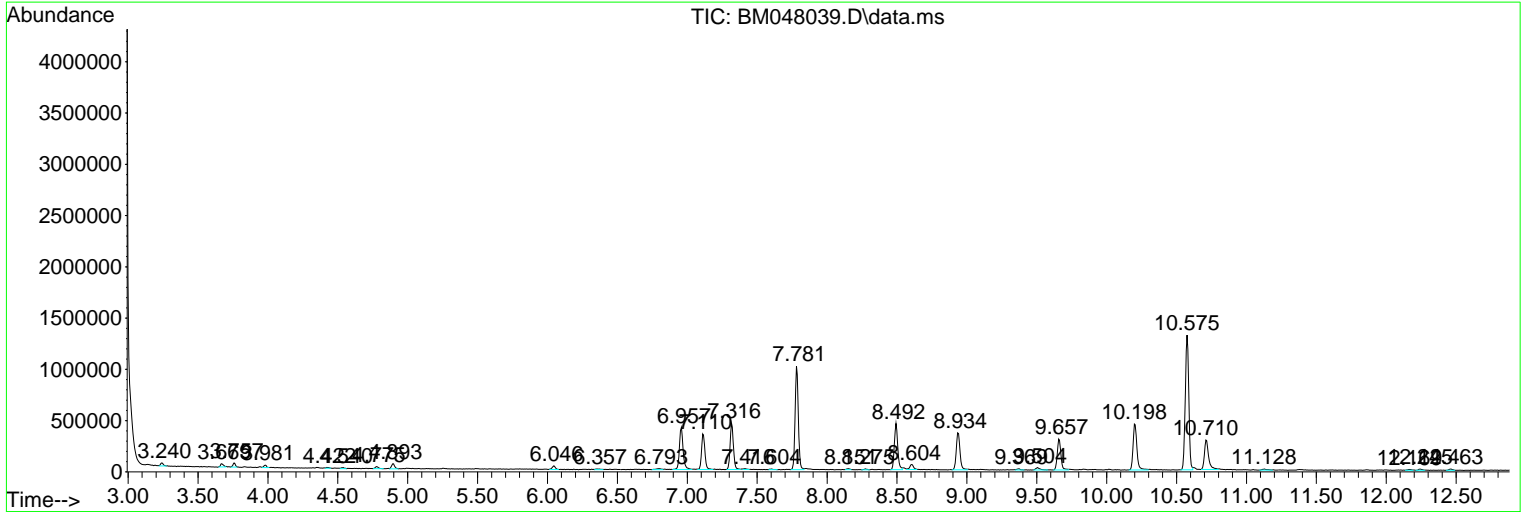
Sum of corrected areas: 49404740

Data Path : Z:\svoasrv\HPCHEM1\BNA\_M\Data\BM101424\  
 Data File : BM048039.D  
 Acq On : 14 Oct 2024 22:11  
 Operator : RC/JU  
 Sample : P4238-03  
 Misc :  
 ALS Vial : 16 Sample Multiplier: 1

Instrument :  
 BNA\_M  
 ClientSampleId :  
 A4F13

Quant Method : Z:\svoasrv\HPCHEM1\BNA\_M\Methods\SFAM-EPA-BM092724.MA.M  
 Quant Title : SVOA CALIBRATION

TIC Library : C:\Database\NIST20.L  
 TIC Integration Parameters: LSCINT.P



Data Path : Z:\svoasrv\HPCHEM1\BNA\_M\Data\BM101424\  
 Data File : BM048039.D  
 Acq On : 14 Oct 2024 22:11  
 Operator : RC/JU  
 Sample : P4238-03  
 Misc :  
 ALS Vial : 16 Sample Multiplier: 1

Instrument :  
 BNA\_M  
 ClientSampleId :  
 A4F13

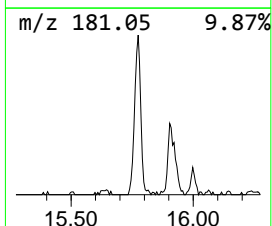
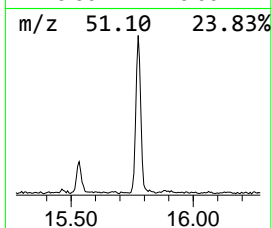
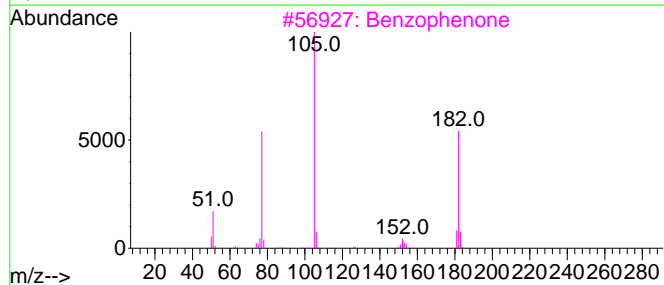
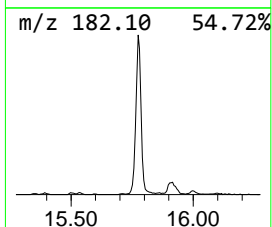
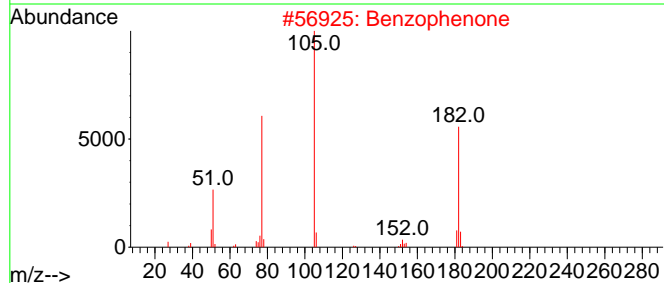
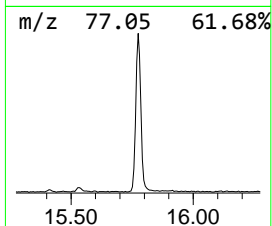
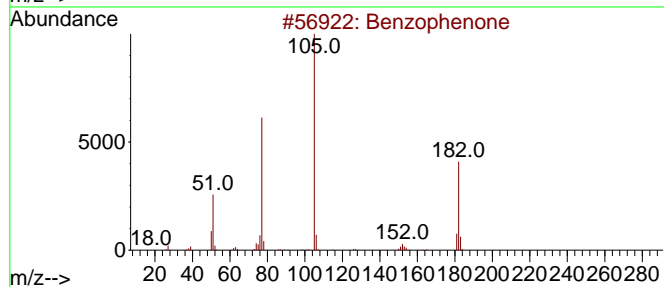
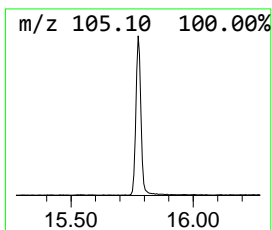
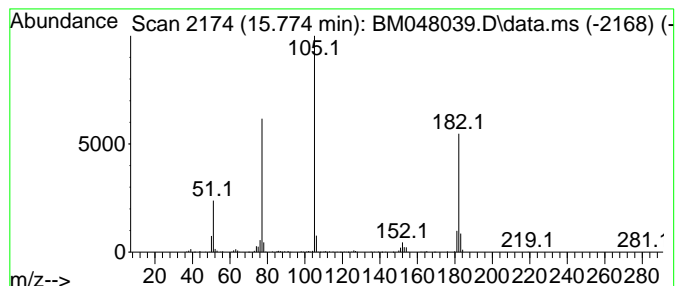
Quant Method : Z:\svoasrv\HPCHEM1\BNA\_M\Methods\SFAM-EPA-BM092724.MA.M  
 Quant Title : SVOA CALIBRATION

TIC Library : C:\Database\NIST20.L  
 TIC Integration Parameters: LSCINT.P

\*\*\*\*\*  
 Peak Number 1 Benzophenone Concentration Rank 1

R.T.	EstConc	Area	Relative to ISTD	R.T.
15.774	3.52 ng/ul	506046	Acenaphthene-d10	14.422

Hit#	of 5	Tentative ID	MW	MolForm	CAS#	Qual
1		Benzophenone	182	C13H10O	000119-61-9	97
2		Benzophenone	182	C13H10O	000119-61-9	96
3		Benzophenone	182	C13H10O	000119-61-9	95
4		Benzophenone	182	C13H10O	000119-61-9	94
5		Benzophenone	182	C13H10O	000119-61-9	91



Data Path : Z:\svoasrv\HPCHEM1\BNA\_M\Data\BM101424\  
 Data File : BM048039.D  
 Acq On : 14 Oct 2024 22:11  
 Operator : RC/JU  
 Sample : P4238-03  
 Misc :  
 ALS Vial : 16 Sample Multiplier: 1

Instrument :  
 BNA\_M  
 ClientSampleId :  
 A4F13

Quant Method : Z:\svoasrv\HPCHEM1\BNA\_M\Methods\SFAM-EPA-BM092724.MA.M  
 Quant Title : SVOA CALIBRATION

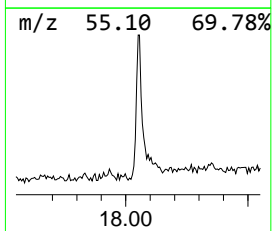
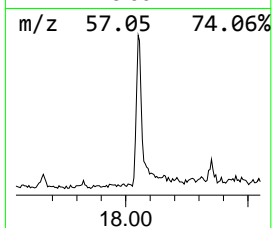
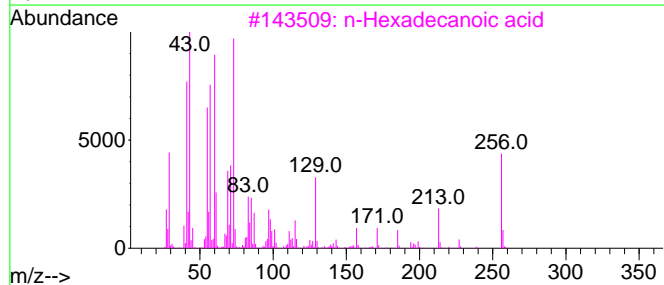
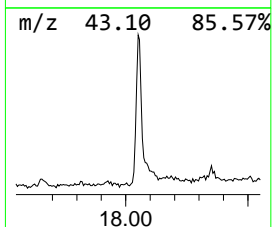
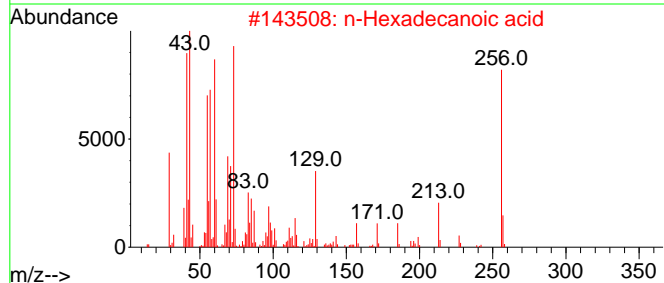
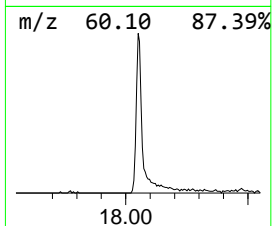
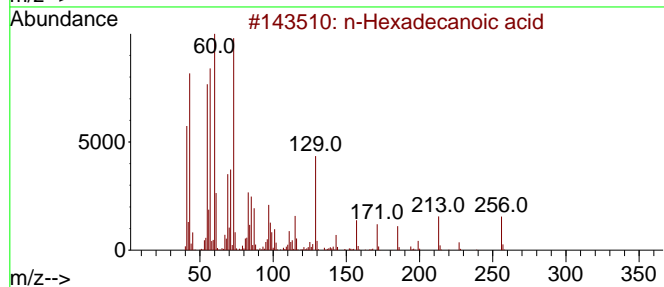
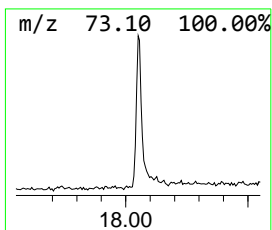
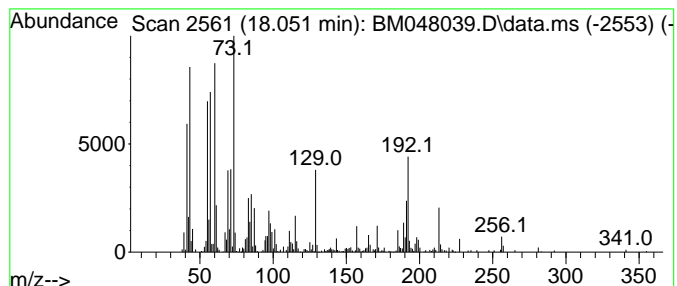
TIC Library : C:\Database\NIST20.L  
 TIC Integration Parameters: LSCINT.P

\*\*\*\*\*  
 Peak Number 2 n-Hexadecanoic acid Concentration Rank 2

R.T.	EstConc	Area	Relative to ISTD	R.T.
18.051	3.24 ng/ul	559192	Phenanthrene-d10	17.163

Hit#	of 5	Tentative ID	MW	MolForm	CAS#	Qual
1		n-Hexadecanoic acid	256	C16H32O2	000057-10-3	99
2		n-Hexadecanoic acid	256	C16H32O2	000057-10-3	97
3		n-Hexadecanoic acid	256	C16H32O2	000057-10-3	97
4		Tridecanoic acid	214	C13H26O2	000638-53-9	96
5		Octadecanoic acid	284	C18H36O2	000057-11-4	93



Data Path : Z:\svoasrv\HPCHEM1\BNA\_M\Data\BM101424\  
 Data File : BM048039.D  
 Acq On : 14 Oct 2024 22:11  
 Operator : RC/JU  
 Sample : P4238-03  
 Misc :  
 ALS Vial : 16 Sample Multiplier: 1

Instrument :  
 BNA\_M  
 ClientSampleId :  
 A4F13

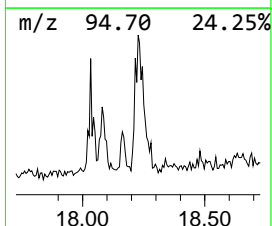
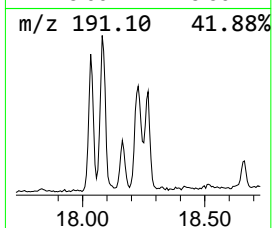
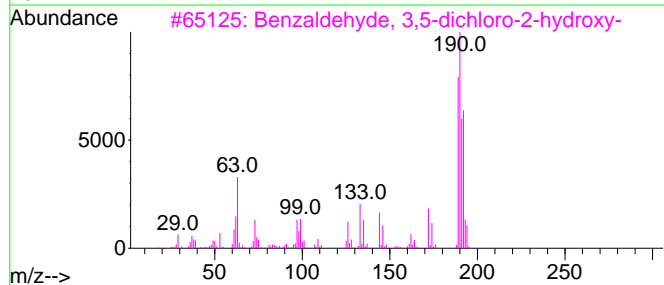
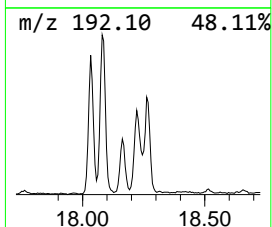
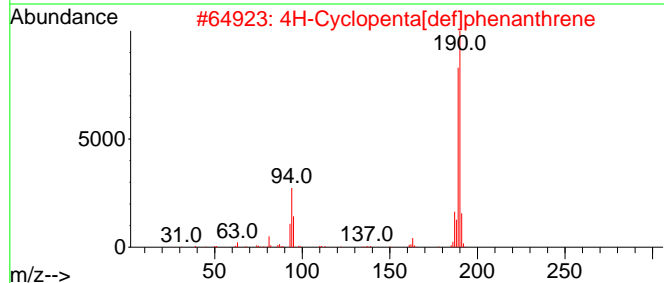
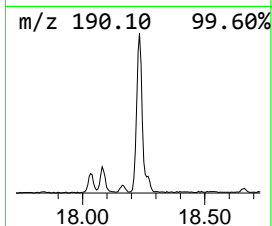
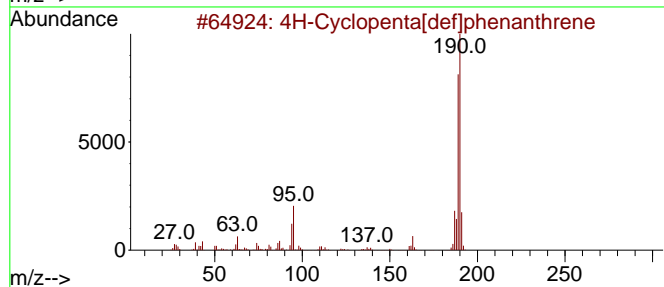
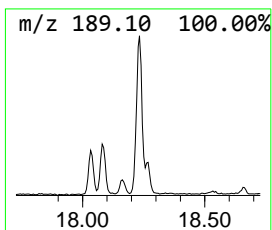
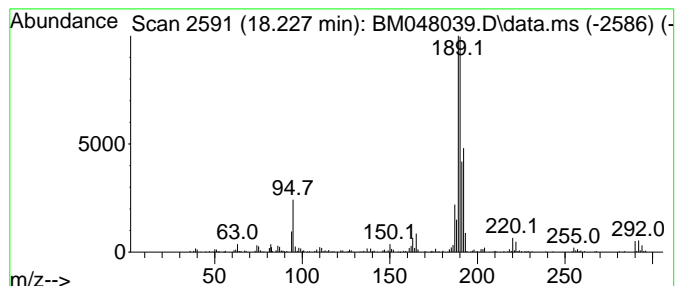
Quant Method : Z:\svoasrv\HPCHEM1\BNA\_M\Methods\SFAM-EPA-BM092724.MA.M  
 Quant Title : SVOA CALIBRATION

TIC Library : C:\Database\NIST20.L  
 TIC Integration Parameters: LSCINT.P

\*\*\*\*\*  
 Peak Number 3 4H-Cyclopenta[def]phenanthrene Concentration Rank 3

R.T.	EstConc	Area	Relative to ISTD	R.T.
18.227	2.45 ng/ul	423670	Phenanthrene-d10	17.163

Hit#	of	5	Tentative ID	MW	MolForm	CAS#	Qual
1			4H-Cyclopenta[def]phenanthrene	190	C15H10	000203-64-5	83
2			4H-Cyclopenta[def]phenanthrene	190	C15H10	000203-64-5	62
3			Benzaldehyde, 3,5-dichloro-2-hyd...	190	C7H4Cl2O2	000090-60-8	50
4			6H-Cyclobuta[jk]phenanthrene	190	C15H10	083469-43-6	50
5			Pyrazole-4-carboxaldehyde, 3-(4-...	190	C10H7FN2O	306936-57-2	47



Data Path : Z:\svoasrv\HPCHEM1\BNA\_M\Data\BM101424\  
Data File : BM048039.D  
Acq On : 14 Oct 2024 22:11  
Operator : RC/JU  
Sample : P4238-03  
Misc :  
ALS Vial : 16 Sample Multiplier: 1

Instrument :  
BNA\_M  
ClientSampleId :  
A4F13

Quant Method : Z:\svoasrv\HPCHEM1\BNA\_M\Methods\SFAM-EPA-BM092724.MA.M  
Quant Title : SVOA CALIBRATION

TIC Library : C:\Database\NIST20.L  
TIC Integration Parameters: LSCINT.P

TIC Top Hit name	RT	EstConc	Units	Response	--Internal Standard--			
					#	RT	Resp	Conc
Benzophenone	15.774	3.5	ng/u1	506046	3	14.422	2873020	20.0
n-Hexadecanoic ...	18.051	3.2	ng/u1	559192	4	17.163	3452810	20.0
4H-Cyclopenta[d...]	18.227	2.5	ng/u1	423670	4	17.163	3452810	20.0