

Data Path : Z:\svoasrv\HPCHEM1\BNA\_M\Data\BM101424\  
 Data File : BMO48078.D  
 Acq On : 16 Oct 2024 07:37  
 Operator : RC/JU  
 Sample : PB164081BL  
 Misc :  
 ALS Vial : 3 Sample Multiplier: 1

Instrument :  
 BNA\_M  
 ClientSampleId :  
 SBLK081

Integration Parameters: LSCINT.P

Integrator: RTE  
 Smoothing : OFF Filtering: 5  
 Sampling : 1 Min Area: 0.1 % of Largest Peak  
 Start Thrs: 0.2 Max Peaks: 100  
 Stop Thrs : 0 Peak Location: TOP

If leading or trailing edge < 100 prefer < Baseline drop else tangent >  
 Peak separation: 5

Method : Z:\svoasrv\HPCHEM1\BNA\_M\Methods\SFAM-EPA-BMO92724.MA.M  
 Title : SVOA CALIBRATION

Signal : TIC: BMO48078.D\data.ms

| peak # | R.T. min | first scan | max scan | last scan | PK TY | peak height | corr. area | corr. % max. | % of total |
|--------|----------|------------|----------|-----------|-------|-------------|------------|--------------|------------|
| 1      | 3.240    | 39         | 43       | 50        | rVB   | 107714      | 148314     | 1.80%        | 0.142%     |
| 2      | 3.652    | 109        | 113      | 134       | rBV   | 1380219     | 2194885    | 26.69%       | 2.105%     |
| 3      | 3.975    | 165        | 168      | 174       | rVB   | 23131       | 33245      | 0.40%        | 0.032%     |
| 4      | 6.951    | 665        | 674      | 691       | rBV   | 1567417     | 2634663    | 32.04%       | 2.526%     |
| 5      | 7.110    | 694        | 701      | 713       | rVB   | 1392753     | 2153767    | 26.19%       | 2.065%     |
| 6      | 7.316    | 729        | 736      | 745       | rBV   | 1719476     | 2703068    | 32.88%       | 2.592%     |
| 7      | 7.781    | 808        | 815      | 824       | rBV   | 1788568     | 2909933    | 35.39%       | 2.790%     |
| 8      | 8.492    | 928        | 936      | 951       | rBV   | 1949939     | 3271891    | 39.79%       | 3.137%     |
| 9      | 8.934    | 1003       | 1011     | 1025      | rBV   | 1553871     | 2583972    | 31.43%       | 2.478%     |
| 10     | 9.363    | 1078       | 1084     | 1088      | rBV3  | 14125       | 25605      | 0.31%        | 0.025%     |
| 11     | 9.657    | 1125       | 1134     | 1148      | rBV   | 1301324     | 2192862    | 26.67%       | 2.103%     |
| 12     | 10.198   | 1218       | 1226     | 1242      | rBV   | 1942648     | 3307418    | 40.23%       | 3.171%     |
| 13     | 10.569   | 1281       | 1289     | 1300      | rBV   | 2478061     | 4330366    | 52.67%       | 4.152%     |
| 14     | 10.710   | 1303       | 1313     | 1334      | rBV   | 1861861     | 3365767    | 40.93%       | 3.227%     |
| 15     | 11.375   | 1419       | 1426     | 1433      | rVB   | 9250        | 18175      | 0.22%        | 0.017%     |
| 16     | 11.857   | 1503       | 1508     | 1514      | rBV5  | 10116       | 16165      | 0.20%        | 0.015%     |
| 17     | 12.163   | 1552       | 1560     | 1568      | rBV   | 35545       | 69202      | 0.84%        | 0.066%     |
| 18     | 13.604   | 1798       | 1805     | 1810      | rBV10 | 3170        | 9497       | 0.12%        | 0.009%     |
| 19     | 13.827   | 1836       | 1843     | 1854      | rBV   | 3267462     | 4594784    | 55.88%       | 4.406%     |
| 20     | 14.110   | 1883       | 1891     | 1902      | rBV2  | 3742916     | 5811413    | 70.68%       | 5.572%     |
| 21     | 14.416   | 1936       | 1943     | 1955      | rBV   | 3647164     | 5697761    | 69.30%       | 5.463%     |
| 22     | 14.516   | 1958       | 1960     | 1967      | rVB8  | 7126        | 13354      | 0.16%        | 0.013%     |
| 23     | 14.627   | 1972       | 1979     | 2000      | rBV   | 1178379     | 2195766    | 26.71%       | 2.105%     |
| 24     | 15.357   | 2095       | 2103     | 2104      | rBV6  | 13424       | 21583      | 0.26%        | 0.021%     |
| 25     | 15.410   | 2105       | 2112     | 2124      | rVV   | 4612199     | 6887843    | 83.77%       | 6.604%     |
| 26     | 15.533   | 2127       | 2133     | 2149      | rVV   | 1379326     | 1979122    | 24.07%       | 1.898%     |
| 27     | 15.651   | 2149       | 2153     | 2159      | rVB2  | 25282       | 40051      | 0.49%        | 0.038%     |
| 28     | 15.833   | 2178       | 2184     | 2188      | rBV7  | 6153        | 13287      | 0.16%        | 0.013%     |
| 29     | 16.033   | 2213       | 2218     | 2219      | rBV4  | 8120        | 9094       | 0.11%        | 0.009%     |
| 30     | 16.198   | 2240       | 2246     | 2250      | rBV9  | 14505       | 24814      | 0.30%        | 0.024%     |
| 31     | 16.280   | 2253       | 2260     | 2263      | rBV9  | 12139       | 24110      | 0.29%        | 0.023%     |
| 32     | 16.645   | 2317       | 2322     | 2328      | rVB4  | 21820       | 39130      | 0.48%        | 0.038%     |
| 33     | 16.839   | 2352       | 2355     | 2361      | rVB7  | 8769        | 15149      | 0.18%        | 0.015%     |
| 34     | 16.951   | 2369       | 2374     | 2378      | rBV5  | 13091       | 23670      | 0.29%        | 0.023%     |
| 35     | 17.162   | 2403       | 2410     | 2418      | rBV   | 4406997     | 6382516    | 77.63%       | 6.120%     |

Data Path : Z:\svoasrv\HPCHEM1\BNA\_M\Data\BM101424\  
 Data File : BMO48078.D  
 Acq On : 16 Oct 2024 07:37  
 Operator : RC/JU  
 Sample : PB164081BL  
 Misc :  
 ALS Vial : 3 Sample Multiplier: 1

**Instrument :**  
 BNA\_M  
**ClientSampleId :**  
 SBLK081

Integration Parameters: LSCINT.P  
 Integrator: RTE  
 Smoothing : OFF Filtering: 5  
 Sampling : 1 Min Area: 0.1 % of Largest Peak  
 Start Thrs: 0.2 Max Peaks: 100  
 Stop Thrs : 0 Peak Location: TOP

If leading or trailing edge < 100 prefer < Baseline drop else tangent >  
 Peak separation: 5

Method : Z:\svoasrv\HPCHEM1\BNA\_M\Methods\SFAM-EPA-BMO92724.MA.M  
 Title : SVOA CALIBRATION

|    |        |      |      |      |      |         |         |         |        |
|----|--------|------|------|------|------|---------|---------|---------|--------|
| 36 | 17.256 | 2420 | 2426 | 2450 | rVB  | 4823902 | 7188553 | 87.43%  | 6.893% |
| 37 | 17.439 | 2453 | 2457 | 2458 | rBV4 | 9261    | 10646   | 0.13%   | 0.010% |
| 38 | 17.545 | 2471 | 2475 | 2477 | rBV4 | 9954    | 14366   | 0.17%   | 0.014% |
| 39 | 17.715 | 2501 | 2504 | 2509 | rVB2 | 18931   | 25381   | 0.31%   | 0.024% |
| 40 | 17.821 | 2518 | 2522 | 2526 | rBV6 | 20890   | 30321   | 0.37%   | 0.029% |
| 41 | 17.868 | 2527 | 2530 | 2536 | rVB7 | 16112   | 25856   | 0.31%   | 0.025% |
| 42 | 18.051 | 2556 | 2561 | 2571 | rBV  | 354320  | 577648  | 7.03%   | 0.554% |
| 43 | 18.309 | 2601 | 2605 | 2607 | rBV4 | 11535   | 14202   | 0.17%   | 0.014% |
| 44 | 18.392 | 2615 | 2619 | 2621 | rBV5 | 7846    | 11270   | 0.14%   | 0.011% |
| 45 | 18.662 | 2662 | 2665 | 2669 | rVB3 | 20670   | 26767   | 0.33%   | 0.026% |
| 46 | 19.109 | 2737 | 2741 | 2746 | rBV2 | 70287   | 98371   | 1.20%   | 0.094% |
| 47 | 19.180 | 2749 | 2753 | 2757 | rBV  | 84696   | 131755  | 1.60%   | 0.126% |
| 48 | 19.239 | 2761 | 2763 | 2770 | rVB3 | 43758   | 48917   | 0.59%   | 0.047% |
| 49 | 19.333 | 2774 | 2779 | 2795 | rBV  | 287685  | 595503  | 7.24%   | 0.571% |
| 50 | 19.480 | 2801 | 2804 | 2809 | rVB  | 76177   | 93426   | 1.14%   | 0.090% |
| 51 | 19.550 | 2810 | 2816 | 2828 | rBV2 | 5697369 | 8222225 | 100.00% | 7.884% |
| 52 | 20.521 | 2978 | 2981 | 2988 | rBV3 | 64246   | 135718  | 1.65%   | 0.130% |
| 53 | 21.392 | 3123 | 3129 | 3145 | rBV2 | 4140774 | 6584663 | 80.08%  | 6.314% |
| 54 | 24.180 | 3594 | 3603 | 3614 | rBV  | 2944390 | 7525396 | 91.53%  | 7.216% |
| 55 | 24.391 | 3629 | 3639 | 3655 | rVB  | 2758132 | 7189128 | 87.44%  | 6.893% |

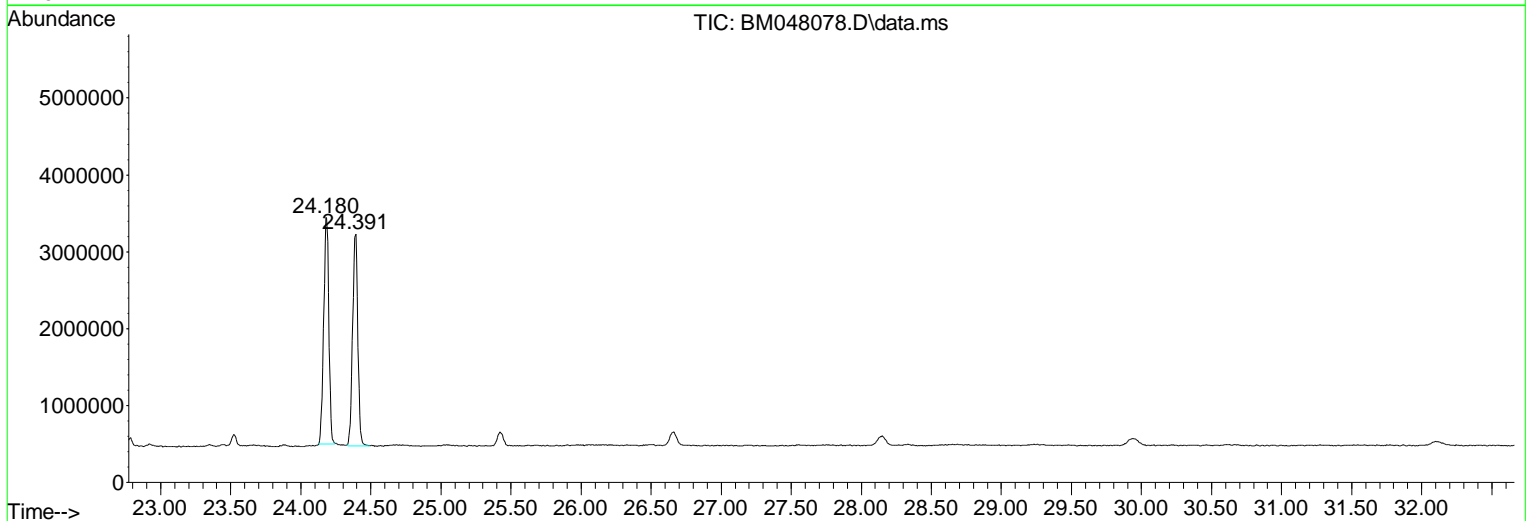
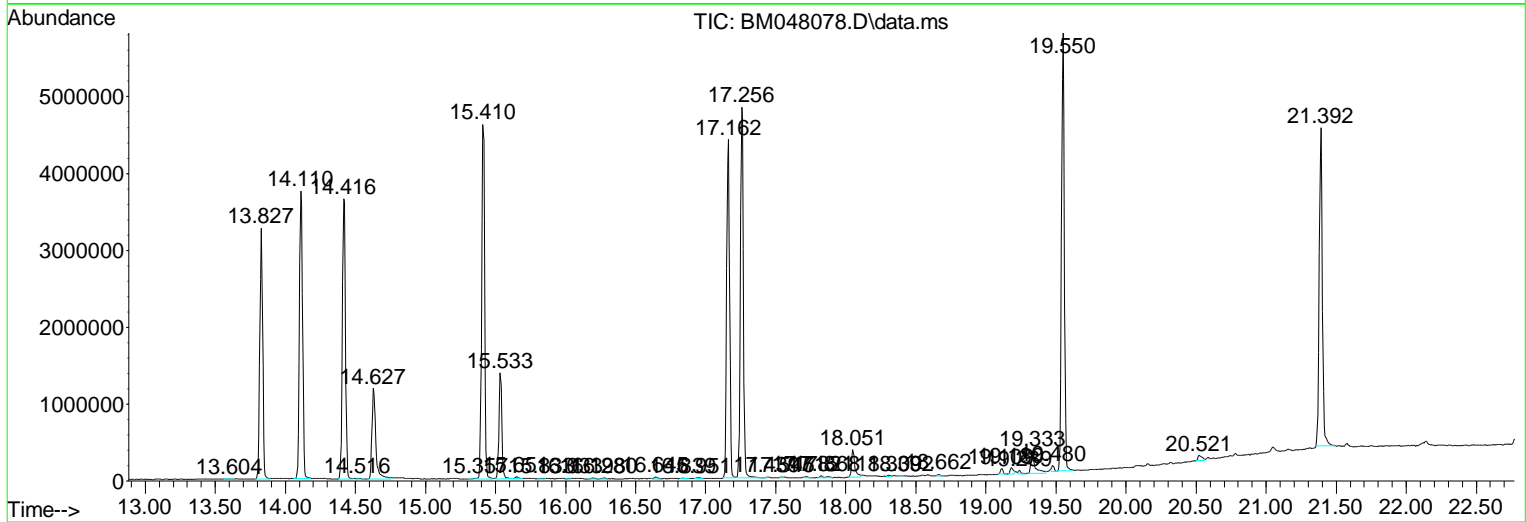
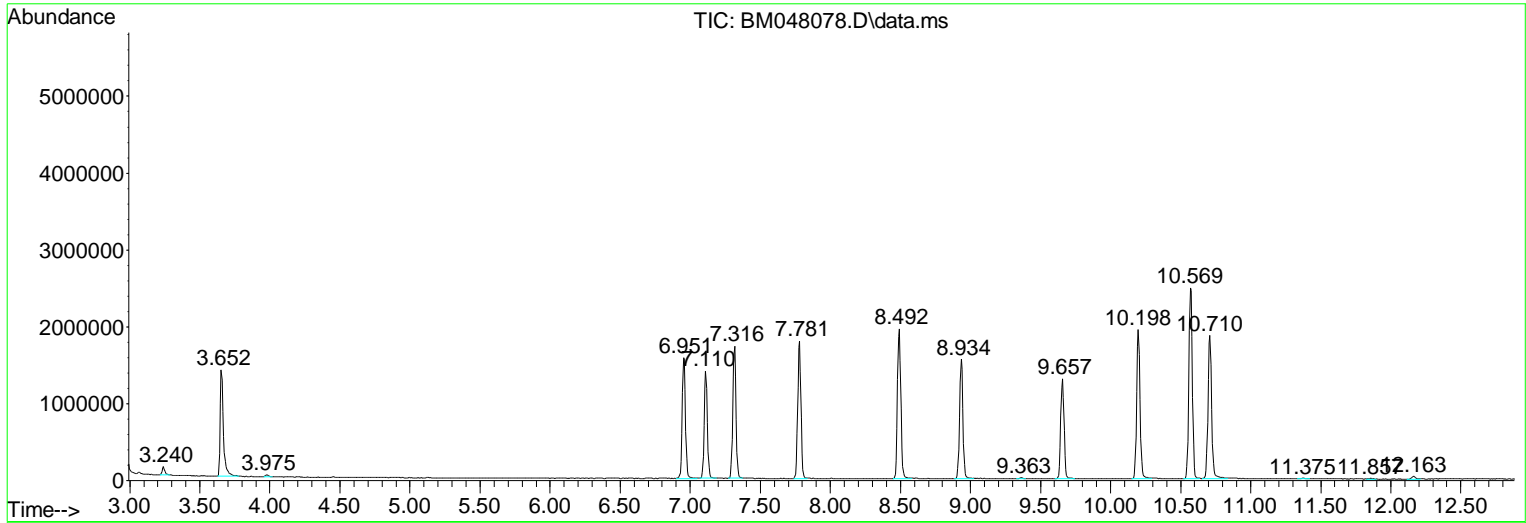
Sum of corrected areas: 104292354

Data Path : Z:\svoasrv\HPCHEM1\BNA\_M\Data\BM101424\  
 Data File : BM048078.D  
 Acq On : 16 Oct 2024 07:37  
 Operator : RC/JU  
 Sample : PB164081BL  
 Misc :  
 ALS Vial : 3 Sample Multiplier: 1

**Instrument :**  
 BNA\_M  
**ClientSampleId :**  
 SBLK081

Quant Method : Z:\svoasrv\HPCHEM1\BNA\_M\Methods\SFAM-EPA-BM092724.MA.M  
 Quant Title : SVOA CALIBRATION

TIC Library : C:\Database\NIST20.L  
 TIC Integration Parameters: LSCINT.P



Data Path : Z:\svoasrv\HPCHEM1\BNA\_M\Data\BM101424\  
Data File : BMO48078.D  
Acq On : 16 Oct 2024 07:37  
Operator : RC/JU  
Sample : PB164081BL  
Misc :  
ALS Vial : 3 Sample Multiplier: 1

**Instrument :**  
BNA\_M  
**ClientSampleId :**  
SBLK081

Quant Method : Z:\svoasrv\HPCHEM1\BNA\_M\Methods\SFAM-EPA-BM092724.MA.M  
Quant Title : SVOA CALIBRATION

TIC Library : C:\Database\NIST20.L  
TIC Integration Parameters: LSCINT.P

No Library Search Compounds Detected

\*\*\*\*\*

Data Path : Z:\svoasrv\HPCHEM1\BNA\_M\Data\BM101424\  
Data File : BMO48078.D  
Acq On : 16 Oct 2024 07:37  
Operator : RC/JU  
Sample : PB164081BL  
Misc :  
ALS Vial : 3 Sample Multiplier: 1

**Instrument :**  
BNA\_M  
**ClientSampleId :**  
SBLK081

Quant Method : Z:\svoasrv\HPCHEM1\BNA\_M\Methods\SFAM-EPA-BM092724.MA.M  
Quant Title : SVOA CALIBRATION

TIC Library : C:\Database\NIST20.L  
TIC Integration Parameters: LSCINT.P

| TIC Top Hit name | RT | EstConc | Units | Response | --Internal Standard-- |    |      |      |
|------------------|----|---------|-------|----------|-----------------------|----|------|------|
|                  |    |         |       |          | #                     | RT | Resp | Conc |

---