

Data Path : Z:\HPCHEM1\BNA M\DATA\BM101717\  
 Data File : BM012271.D  
 Acq On : 18 Oct 2017 04:46  
 Operator : SJ/JU  
 Sample : I5664-12MSD  
 Misc :  
 ALS Vial : 22 Sample Multiplier: 1

Instrument :  
 BNA\_M  
 ClientSampleId :  
 C0B75MSD

Quant Time: Oct 18 08:24:12 2017  
 Quant Method : Z:\HPCHEM1\BNA M\METHODS\SOM-EPA-BM101217.M  
 Quant Title : SVOA CALIBRATION  
 QLast Update : Wed Oct 18 08:12:28 2017  
 Response via : Initial Calibration

Internal Standards	R.T.	QIon	Response	Conc	Units	Dev(Min)
1) 1,4-Dichlorobenzene-d4	7.78	152	180858	20.00	ng/ul	0.00
18) Naphthalene-d8	10.59	136	761138	20.00	ng/ul	0.00
35) Acenaphthene-d10	14.44	164	629087	20.00	ng/ul	0.00
61) Phenanthrene-d10	17.19	188	1074769	20.00	ng/ul	0.00
75) Chrysene-d12	21.37	240	859899	20.00	ng/ul	0.00
83) Perylene-d12	23.67	264	826671	20.00	ng/ul	0.00

## System Monitoring Compounds

3) 1,4-Dioxane-d8	3.20	96	20583	5.41	ng/uL	0.00
5) Phenol-d5	6.96	99	761848	51.92	ng/ul	0.00
7) Bis-(2-Chloroethyl)ether-d	7.12	67	372698	42.35	ng/ul	0.00
9) 2-Chlorophenol-d4	7.32	132	488189	39.22	ng/ul	0.00
13) 4-Methylphenol-d8	8.50	113	506482	40.09	ng/ul	0.00
19) Nitrobenzene-d5	8.96	128	234744	40.41	ng/ul	0.00
22) 2-Nitrophenol-d4	9.67	143	287017	42.29	ng/ul	0.00
26) 2,4-Dichlorophenol-d3	10.22	165	573311	44.25	ng/ul	0.00
29) 4-Chloroaniline-d4	10.73	131	631154	52.04	ng/ul	0.00
43) Dimethylphthalate-d6	13.85	166	1761779	31.69	ng/ul	0.00
46) Acenaphthylene-d8	14.13	160	2124597	31.57	ng/ul	0.00
51) 4-Nitrophenol-d4	14.67	143	282294	33.77	ng/ul	0.00
57) Fluorene-d10	15.43	176	1830103	40.10	ng/ul	0.00
62) 4,6-Dinitro-2-methylphenol	15.58	200	246520	33.42	ng/ul	0.00
70) Anthracene-d10	17.29	188	2194470	41.29	ng/ul	0.00
76) Pyrene-d10	19.58	212	2244132	51.41	ng/ul	0.00
87) Benzo(a)pyrene-d12	23.52	264	1649031	41.38	ng/ul	0.00

## Target Compounds

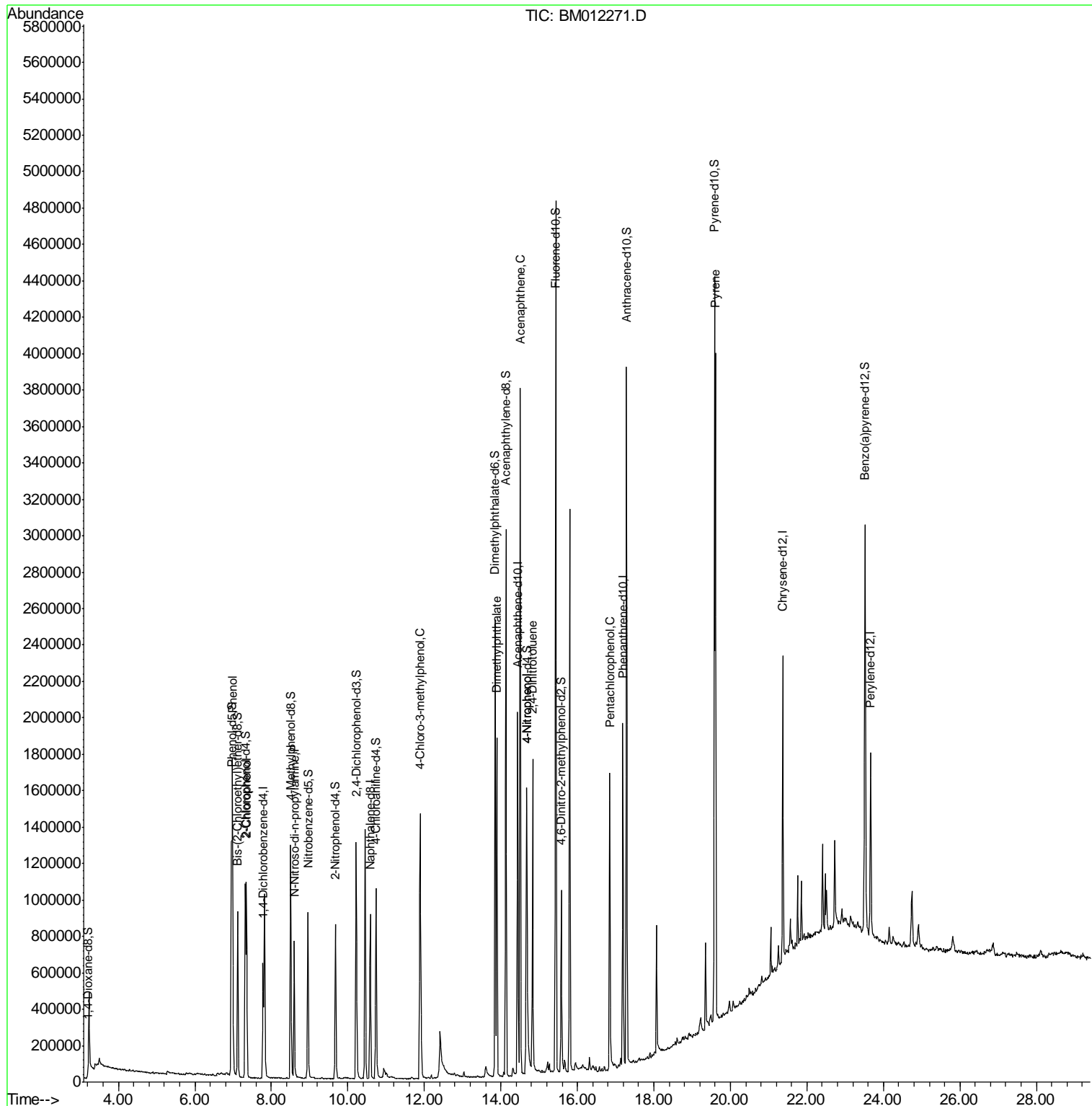
Target Compounds	R.T.	QIon	Response	Conc	Units	Ovalue
6) Phenol	6.99	94	891159	58.747	ng/ul	99
10) 2-Chlorophenol	7.35	128	479198	37.722	ng/ul	99
15) N-Nitroso-di-n-propylamine	8.60	70	284097	27.608	ng/ul	98
33) 4-Chloro-3-methylphenol	11.89	107	556560	41.617	ng/ul	97
44) Dimethylphthalate	13.90	163	1276698	22.919	ng/ul	98
49) Acenaphthene	14.50	153	1488115	33.428	ng/ul	99
52) 4-Nitrophenol	14.68	109	267303	35.583	ng/ul	99
54) 2,4-Dinitrotoluene	14.83	165	522507	32.605	ng/ul	91
68) Pentachlorophenol	16.84	266	327800	40.326	ng/ul	96
77) Pyrene	19.62	202	2319732	40.848	ng/ul	100

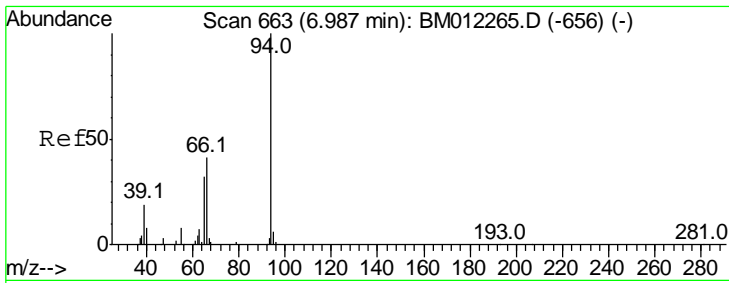
(#) = qualifier out of range (m) = manual integration (+) = signals summed

Data Path : Z:\HPCHEM1\BNA M\DATA\BM101717\  
 Data File : BM012271.D  
 Acq On : 18 Oct 2017 04:46  
 Operator : SJ/JU  
 Sample : I5664-12MSD  
 Misc :  
 ALS Vial : 22 Sample Multiplier: 1

Instrument :  
 BNA\_M  
 ClientSampleId :  
 C0B75MSD

Quant Time: Oct 18 08:24:12 2017  
 Quant Method : Z:\HPCHEM1\BNA M\METHODS\SOM-EPA-BM101217.M  
 Quant Title : SVOA CALIBRATION  
 QLast Update : Wed Oct 18 08:12:28 2017  
 Response via : Initial Calibration

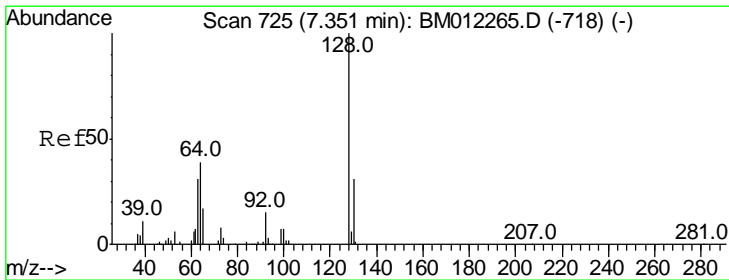
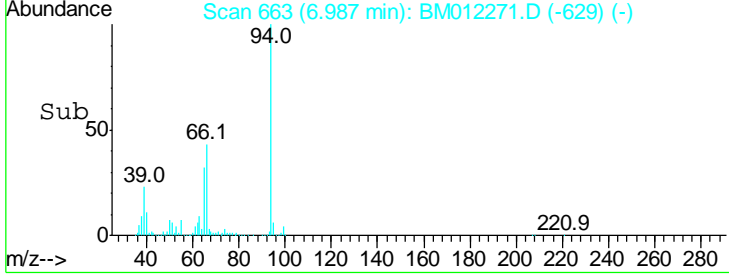
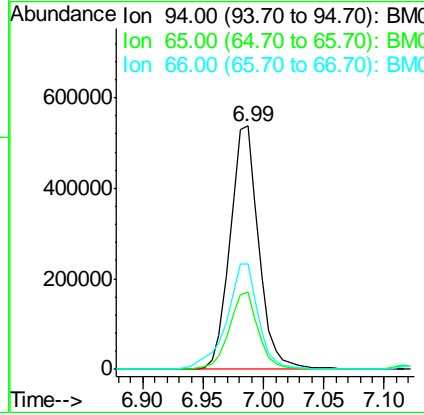
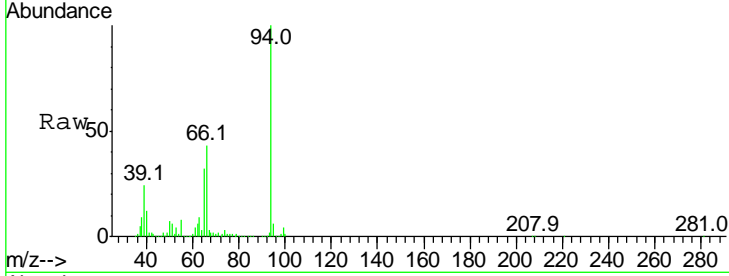




#6  
 Phenol  
 Concen: 58.747 ng/ul  
 RT: 6.99 min Scan# 663  
 Delta R.T. -0.00 min  
 Lab File: BM012271.D  
 Acq: 18 Oct 2017 04:46

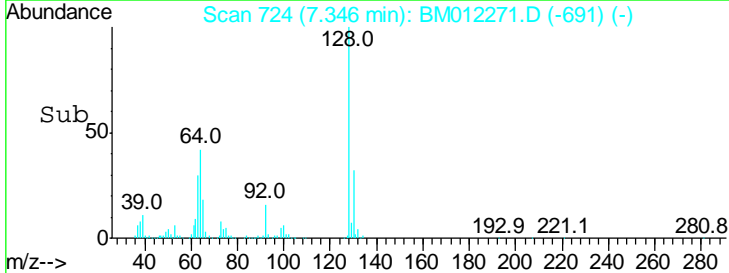
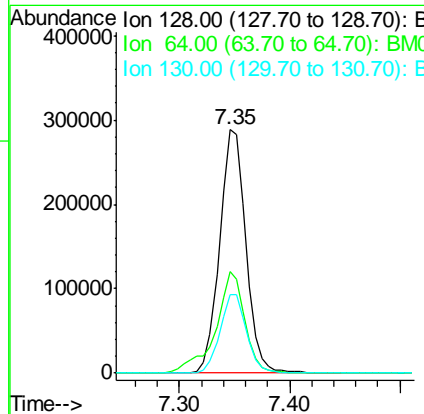
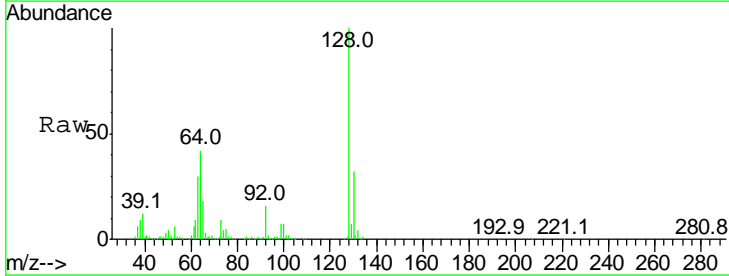
Instrument :  
 BNA\_M  
 ClientSampled :  
 C0B75MSD

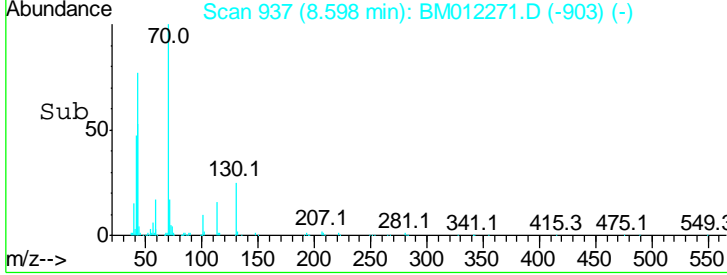
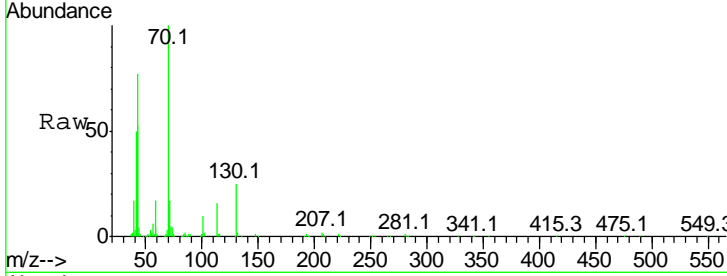
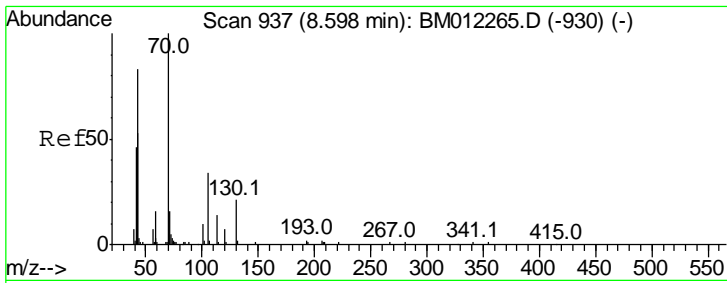
Tgt Ion	Resp	Lower	Upper
94	100		
65	31.5	24.4	36.6
66	43.1	35.0	52.4



#10  
 2-Chlorophenol  
 Concen: 37.722 ng/ul  
 RT: 7.35 min Scan# 724  
 Delta R.T. -0.01 min  
 Lab File: BM012271.D  
 Acq: 18 Oct 2017 04:46

Tgt Ion	Resp	Lower	Upper
128	100		
64	41.6	32.7	49.1
130	32.2	26.2	39.4

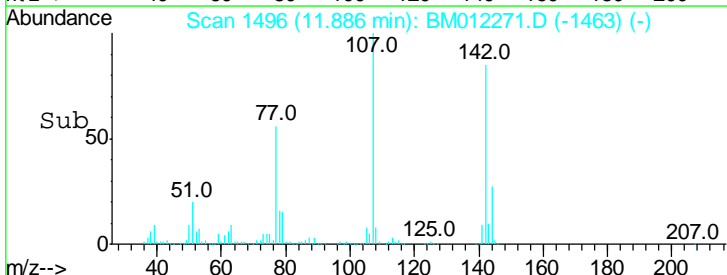
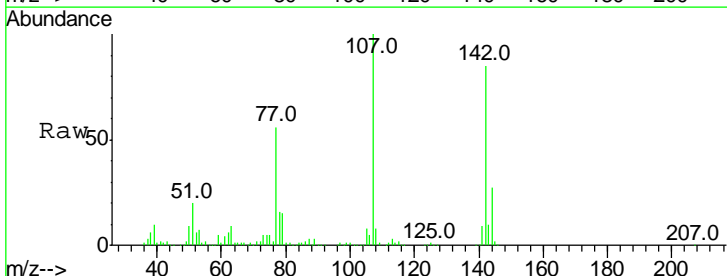
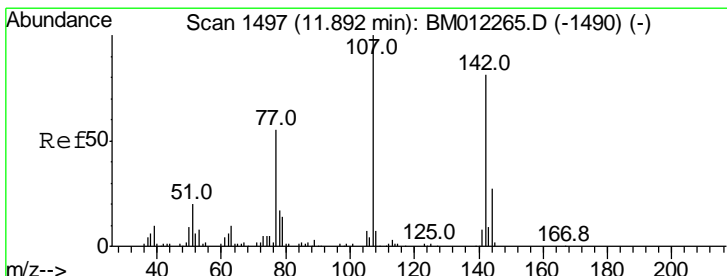
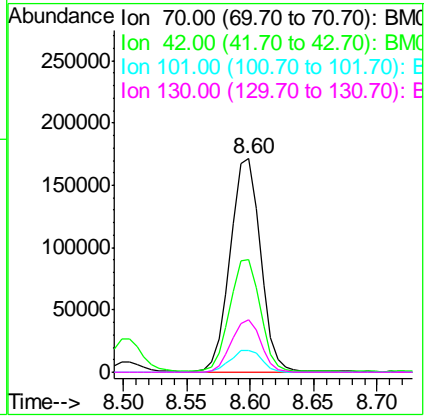




#15  
 N-Nitroso-di-n-propylamine  
 Concen: 27.608 ng/ul  
 RT: 8.60 min Scan# 937  
 Delta R.T. 0.00 min  
 Lab File: BM012271.D  
 Acq: 18 Oct 2017 04:46

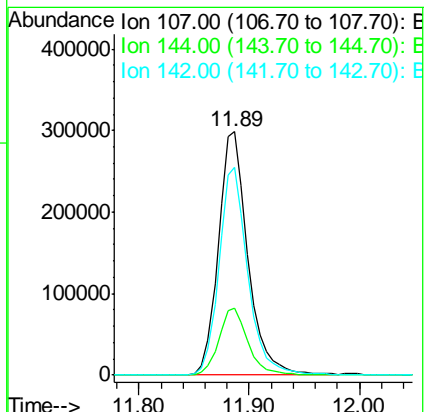
**Instrument :**  
 BNA\_M  
**ClientSampled :**  
 C0B75MSD

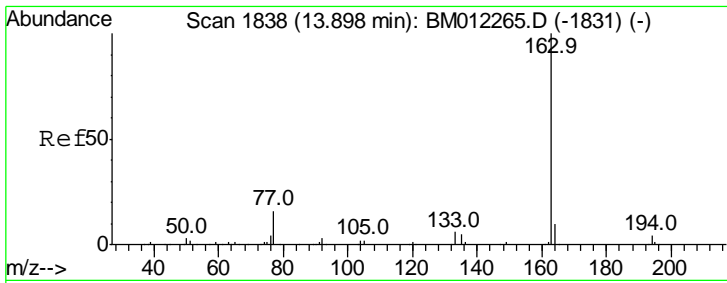
Tgt Ion	Resp	Lower	Upper
70	100		
42	52.7	43.0	64.4
101	10.4	8.2	12.2
130	24.8	18.6	28.0



#33  
 4-Chloro-3-methylphenol  
 Concen: 41.617 ng/ul  
 RT: 11.89 min Scan# 1496  
 Delta R.T. -0.01 min  
 Lab File: BM012271.D  
 Acq: 18 Oct 2017 04:46

Tgt Ion	Resp	Lower	Upper
107	100		
144	27.3	21.2	31.8
142	85.3	65.3	97.9



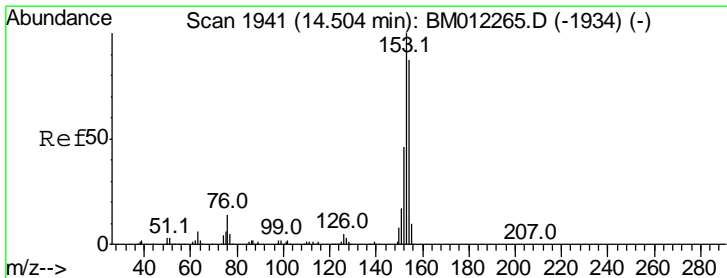
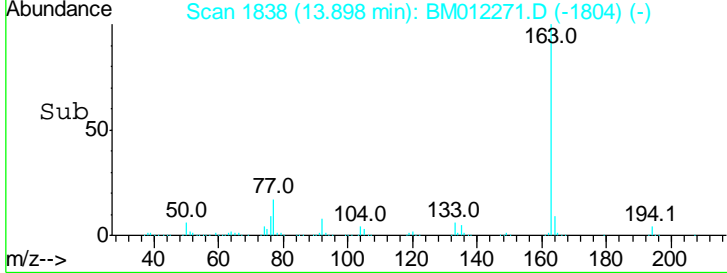
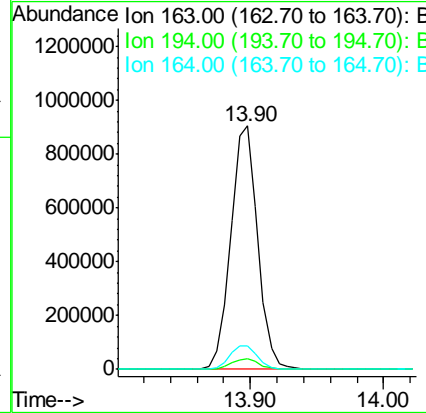
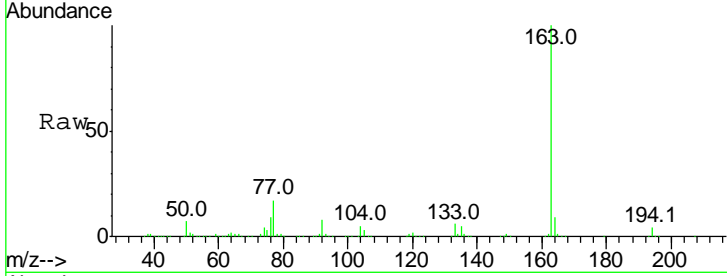


#44  
 Dimethylphthalate  
 Concen: 22.919 ng/ul  
 RT: 13.90 min Scan# 1838  
 Delta R.T. 0.00 min  
 Lab File: BM012271.D  
 Acq: 18 Oct 2017 04:46

Instrument :  
 BNA\_M  
 ClientSampled :  
 C0B75MSD

Tgt Ion:163 Resp: 1276698

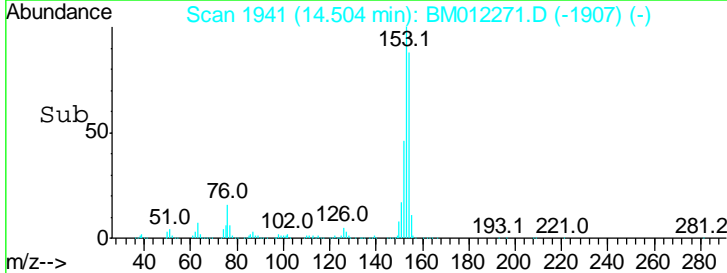
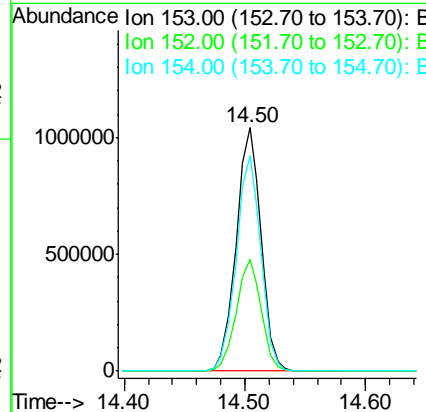
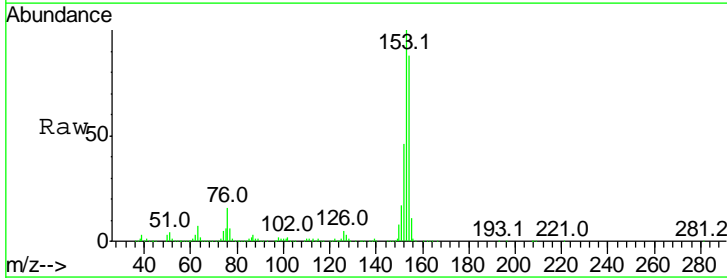
Ion	Ratio	Lower	Upper
163	100		
194	4.1	3.7	5.5
164	9.5	8.1	12.1

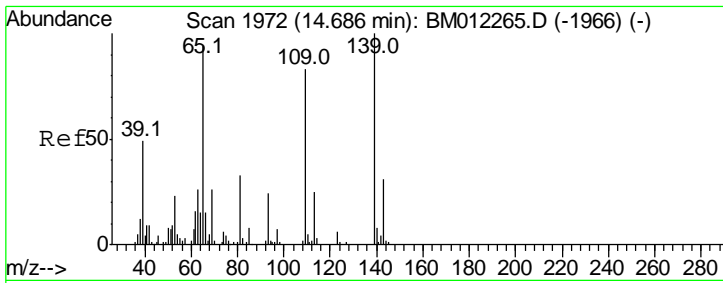


#49  
 Acenaphthene  
 Concen: 33.428 ng/ul  
 RT: 14.50 min Scan# 1941  
 Delta R.T. 0.00 min  
 Lab File: BM012271.D  
 Acq: 18 Oct 2017 04:46

Tgt Ion:153 Resp: 1488115

Ion	Ratio	Lower	Upper
153	100		
152	45.8	37.4	56.0
154	88.5	71.1	106.7

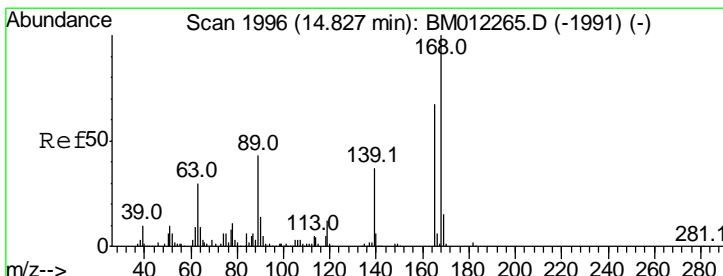
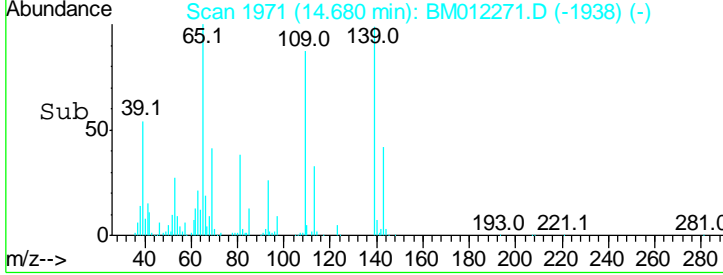
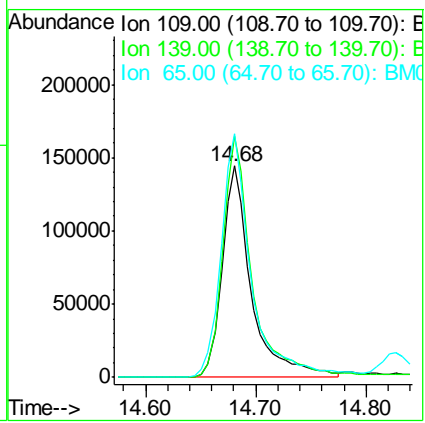
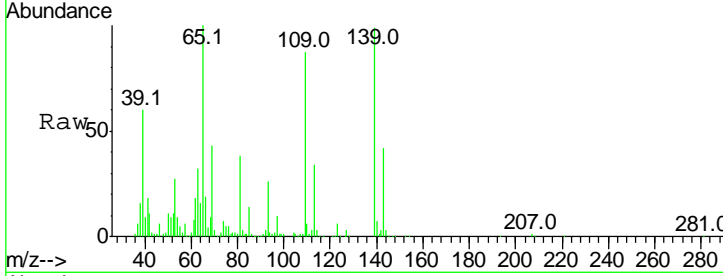




#52  
 4-Nitrophenol  
 Concen: 35.583 ng/ul  
 RT: 14.68 min Scan# 1971  
 Delta R.T. -0.01 min  
 Lab File: BM012271.D  
 Acq: 18 Oct 2017 04:46

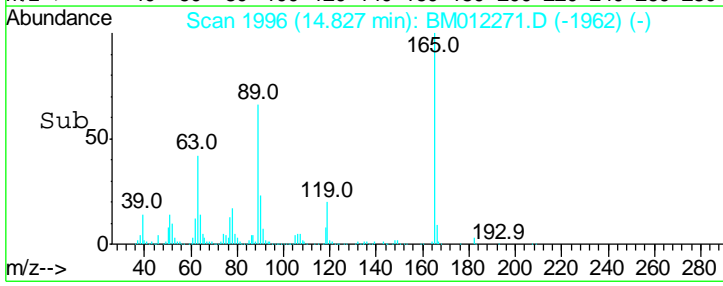
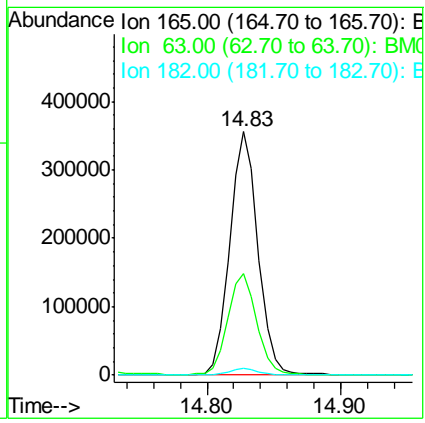
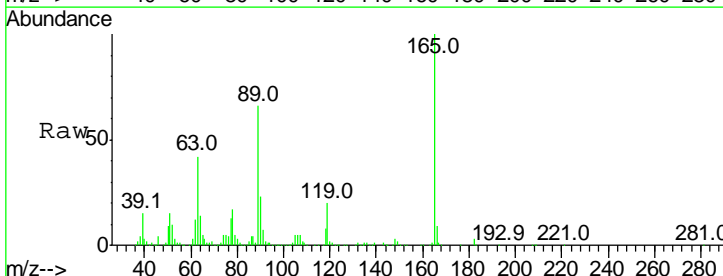
**Instrument :**  
 BNA\_M  
**ClientSampled :**  
 C0B75MSD

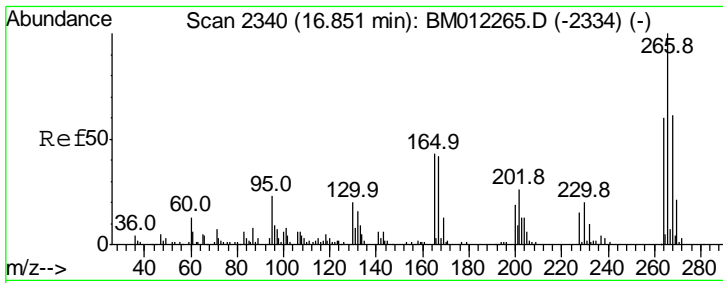
Tgt Ion	Resp	Lower	Upper
109	267303		
109	100		
139	114.4	90.6	135.8
65	115.4	93.1	139.7



#54  
 2,4-Dinitrotoluene  
 Concen: 32.605 ng/ul  
 RT: 14.83 min Scan# 1996  
 Delta R.T. -0.00 min  
 Lab File: BM012271.D  
 Acq: 18 Oct 2017 04:46

Tgt Ion	Resp	Lower	Upper
165	522507		
165	100		
63	41.7	38.7	58.1
182	2.9	2.6	3.8

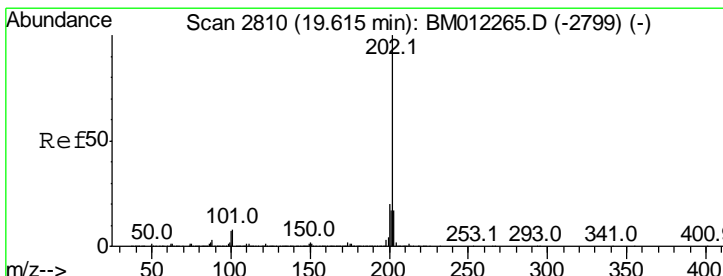
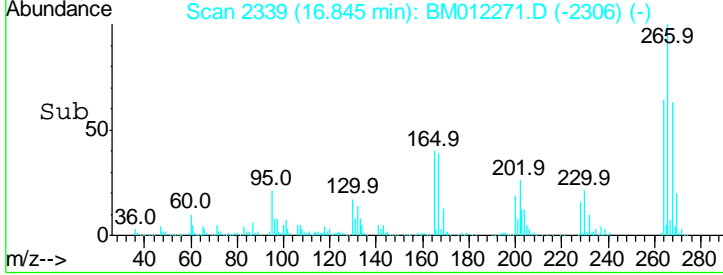
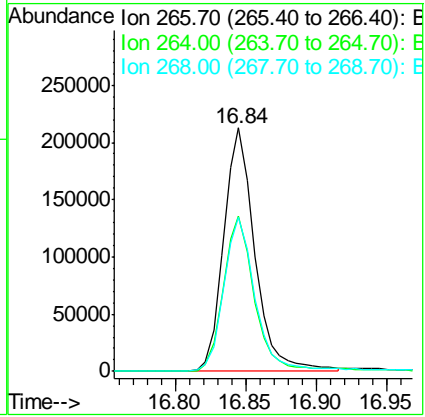
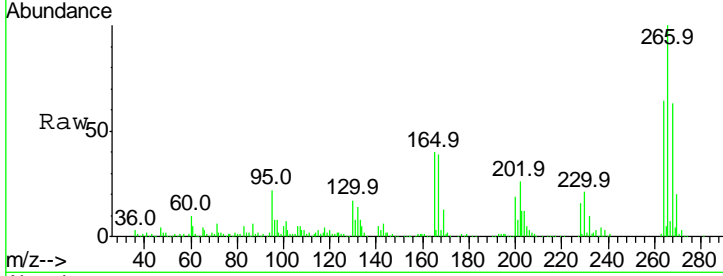




#68  
 Pentachlorophenol  
 Concen: 40.326 ng/ul  
 RT: 16.84 min Scan# 2339  
 Delta R.T. -0.01 min  
 Lab File: BM012271.D  
 Acq: 18 Oct 2017 04:46

**Instrument :**  
 BNA\_M  
**ClientSampled :**  
 C0B75MSD

Tgt Ion	Resp	Lower	Upper
266	100		
264	63.7	47.3	70.9
268	63.1	52.3	78.5



#77  
 Pyrene  
 Concen: 40.848 ng/ul  
 RT: 19.62 min Scan# 2810  
 Delta R.T. 0.00 min  
 Lab File: BM012271.D  
 Acq: 18 Oct 2017 04:46

Tgt Ion	Resp	Lower	Upper
202	100		
101	8.0	6.5	9.7
100	6.9	5.6	8.4

