

Data Path : Z:\HPCHEM1\BNA M\DATA\BM101717\  
 Data File : BM012260.D  
 Acq On : 17 Oct 2017 22:11  
 Operator : SJ/JU  
 Sample : I5664-05  
 Misc :  
 ALS Vial : 12 Sample Multiplier: 1

Instrument :  
 BNA\_M  
 ClientSampled :  
 C0B63

## Integration Parameters: LSCINT.P

Integrator: RTE  
 Smoothing : OFF Filtering: 5  
 Sampling : 1 Min Area: 1 % of largest Peak  
 Start Thrs: 0.2 Max Peaks: 100  
 Stop Thrs : 0 Peak Location: TOP

If leading or trailing edge < 100 prefer < Baseline drop else tangent >  
 Peak separation: 5

Method : Z:\HPCHEM1\BNA M\METHODS\SOM-EPA-BM101217.M  
 Title : SVOA CALIBRATION

Signal : TIC

peak #	R.T. min	first scan	max scan	last scan	PK TY	peak height	corr. area	corr. % max.	% of total
1	6.428	560	568	578	rVB5	32577	83356	1.41%	0.156%
2	6.957	653	658	675	rVB2	425806	924356	15.66%	1.734%
3	7.116	675	685	696	rBV	350077	631078	10.69%	1.184%
4	7.316	706	719	734	rBV	486522	886161	15.01%	1.662%
5	7.787	794	799	813	rVB	689218	1202406	20.37%	2.255%
6	8.504	913	921	935	rBV	597785	1118202	18.94%	2.097%
7	8.881	973	985	992	rBV4	63793	150974	2.56%	0.283%
8	8.957	992	998	1008	rBV	497908	932812	15.80%	1.750%
9	9.116	1021	1025	1034	rVB6	43280	96559	1.64%	0.181%
10	9.410	1070	1075	1079	rBV	116774	177438	3.01%	0.333%
11	9.681	1108	1121	1129	rBV	382248	760431	12.88%	1.426%
12	10.222	1206	1213	1220	rBV	487408	965838	16.36%	1.811%
13	10.587	1268	1275	1289	rVB	853842	1670578	28.30%	3.133%
14	10.739	1295	1301	1307	rBV	316384	630858	10.69%	1.183%
15	10.792	1307	1310	1319	rVB	68647	113550	1.92%	0.213%
16	11.916	1495	1501	1508	rBV2	52298	96586	1.64%	0.181%
17	13.033	1685	1691	1698	rVB3	90306	153805	2.61%	0.288%
18	13.751	1807	1813	1821	rVB9	33057	77234	1.31%	0.145%
19	13.851	1821	1830	1834	rBV	1429062	2128076	36.05%	3.991%
20	13.898	1834	1838	1844	rVB	545018	792268	13.42%	1.486%
21	14.133	1872	1878	1888	rBV	1579811	2472530	41.88%	4.637%
22	14.257	1894	1899	1903	rBV2	96378	143133	2.42%	0.268%
23	14.304	1903	1907	1918	rVB8	57686	165935	2.81%	0.311%
24	14.439	1924	1930	1938	rVB2	1734807	2648230	44.86%	4.967%
25	14.680	1965	1971	1988	rBV2	224186	597777	10.13%	1.121%
26	15.216	2057	2062	2066	rBV5	116732	198116	3.36%	0.372%
27	15.257	2066	2069	2074	rVB	67901	103288	1.75%	0.194%
28	15.433	2094	2099	2106	rBV	1648338	2477340	41.96%	4.646%
29	15.586	2120	2125	2133	rBV	309490	513089	8.69%	0.962%
30	15.674	2136	2140	2146	rVB	131389	209692	3.55%	0.393%
31	15.804	2158	2162	2166	rBV	126197	164246	2.78%	0.308%
32	16.157	2216	2222	2226	rBV	326826	522480	8.85%	0.980%
33	16.974	2357	2361	2366	rBV	323598	450436	7.63%	0.845%
34	17.192	2392	2398	2405	rBV	2084811	2957981	50.10%	5.548%

Data Path : Z:\HPCHEM1\BNA M\DATA\BM101717\  
Data File : BM012260.D  
Acq On : 17 Oct 2017 22:11  
Operator : SJ/JU  
Sample : I5664-05  
Misc :  
ALS Vial : 12 Sample Multiplier: 1

Instrument :  
BNA\_M  
ClientSampleId :  
C0B63

Integration Parameters: LSCINT.P  
Integrator: RTE  
Smoothing : OFF Filtering: 5  
Sampling : 1 Min Area: 1 % of largest Peak  
Start Thrs: 0.2 Max Peaks: 100  
Stop Thrs : 0 Peak Location: TOP

If leading or trailing edge < 100 prefer < Baseline drop else tangent >  
Peak separation: 5

Method : Z:\HPCHEM1\BNA M\METHODS\SOM-EPA-BM101217.M  
Title : SVOA CALIBRATION

35	17.292	2410	2415	2422	rVB2	1752668	2649835	44.88%	4.970%
36	18.068	2544	2547	2553	rBV2	424284	589459	9.98%	1.106%
37	19.292	2752	2755	2759	rBV2	640783	741742	12.56%	1.391%
38	19.586	2801	2805	2809	rBV	2723837	3529719	59.79%	6.620%
39	19.698	2822	2824	2828	rBV3	410464	446341	7.56%	0.837%
40	21.239	3083	3086	3087	rBV	1475612	1485249	25.16%	2.786%
41	21.262	3087	3090	3097	rVB	4179044	5903661	100.00%	11.073%
42	21.374	3105	3109	3114	rVB	3112526	4000338	67.76%	7.503%
43	23.527	3472	3475	3493	rVB2	1534144	4135579	70.05%	7.757%
44	23.680	3496	3501	3512	rVB	1287727	2618455	44.35%	4.911%

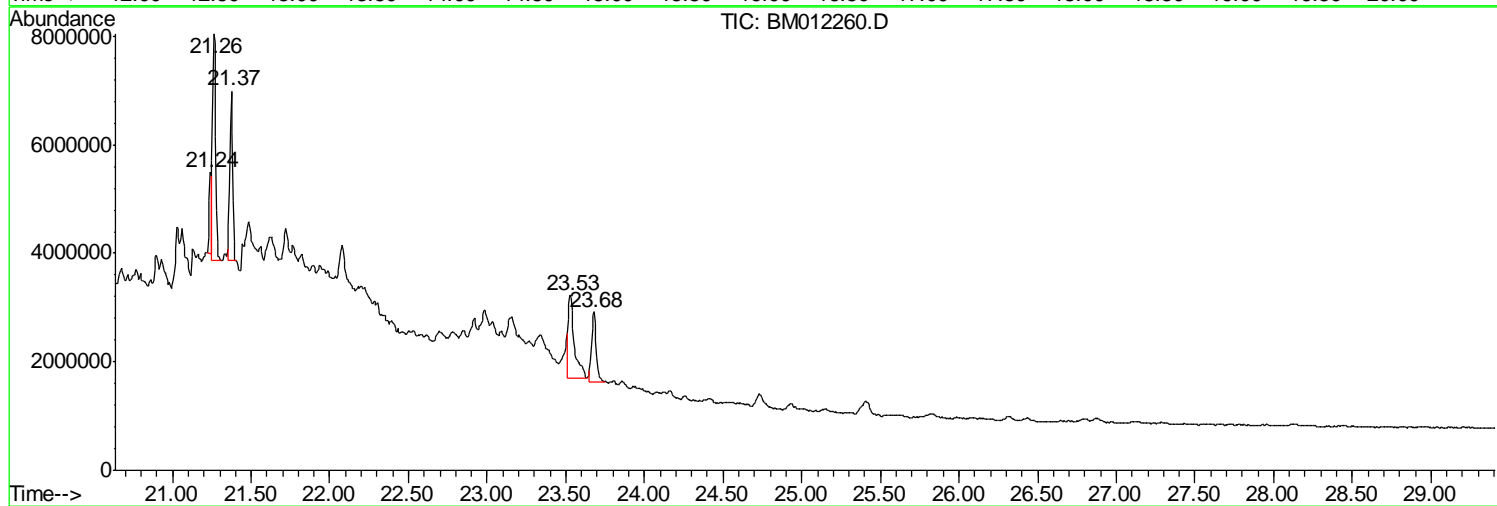
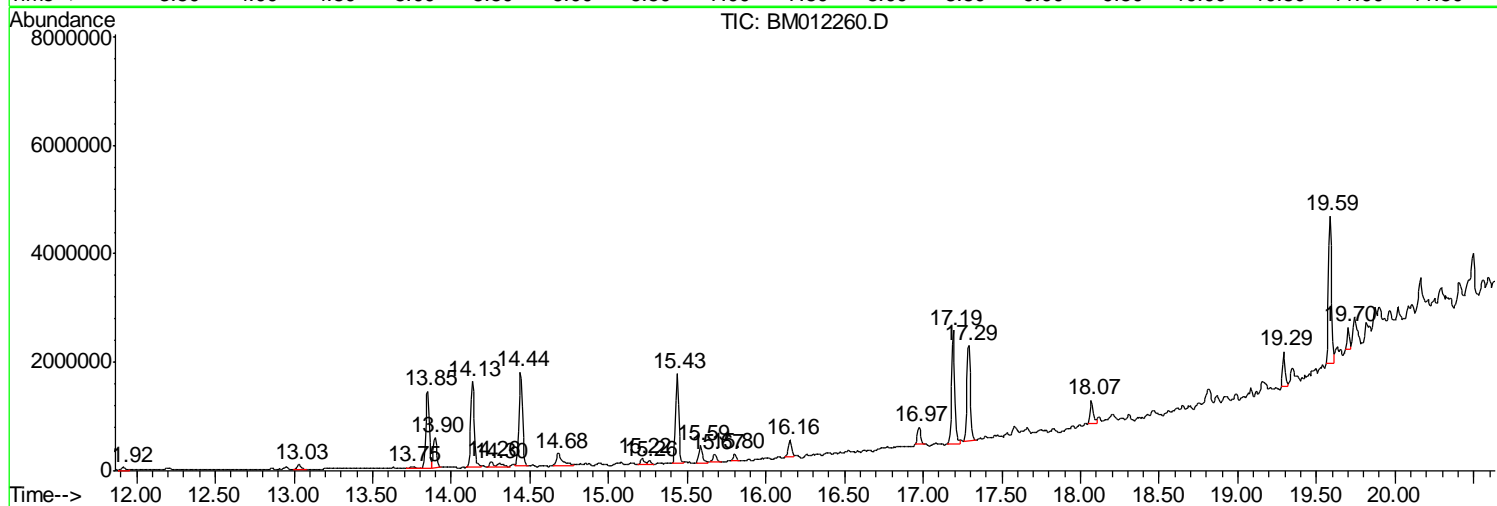
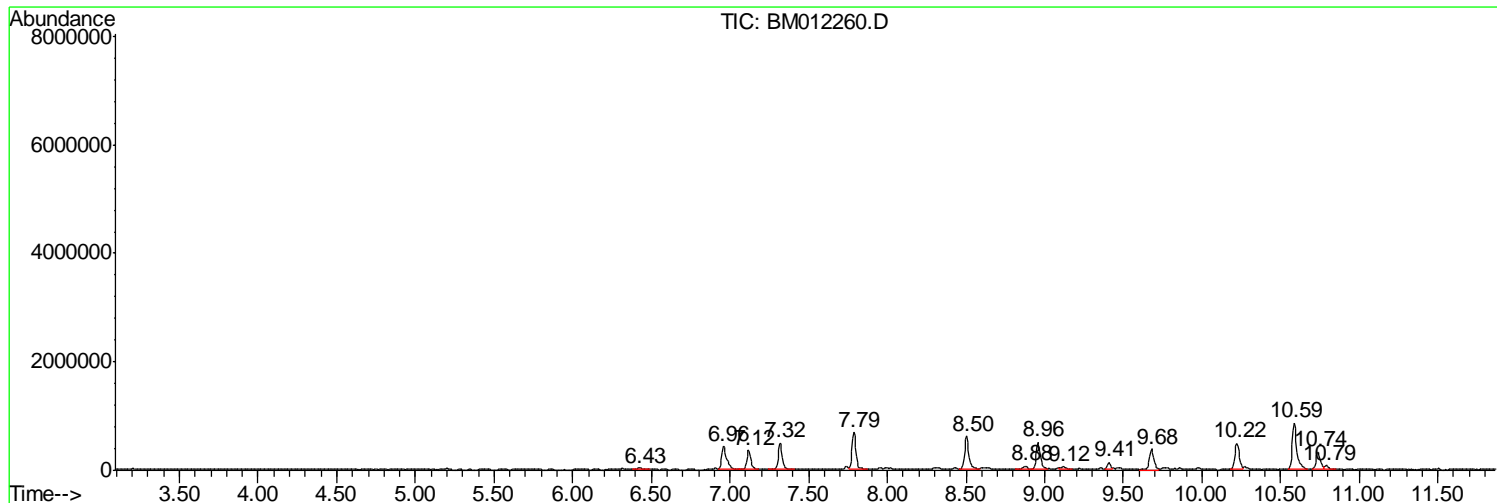
Sum of corrected areas: 53317217

Data Path : Z:\HPCHEM1\BNA M\DATA\BM101717\  
 Data File : BM012260.D  
 Acq On : 17 Oct 2017 22:11  
 Operator : SJ/JU  
 Sample : I5664-05  
 Misc :  
 ALS Vial : 12 Sample Multiplier: 1

**Instrument :**  
 BNA\_M  
**ClientSampleId :**  
 C0B63

Quant Method : Z:\HPCHEM1\BNA M\METHODS\SOM-EPA-BM101217.M  
 Quant Title : SVOA CALIBRATION

TIC Library : C:\DATABASE\NIST11.L  
 TIC Integration Parameters: LSCINT.P



Data Path : Z:\HPCHEM1\BNA M\DATA\BM101717\  
 Data File : BM012260.D  
 Acq On : 17 Oct 2017 22:11  
 Operator : SJ/JU  
 Sample : I5664-05  
 Misc :  
 ALS Vial : 12 Sample Multiplier: 1

Instrument :  
 BNA\_M  
 ClientSampleID :  
 C0B63

Quant Method : Z:\HPCHEM1\BNA M\METHODS\SOM-EPA-BM101217.M  
 Quant Title : SVOA CALIBRATION

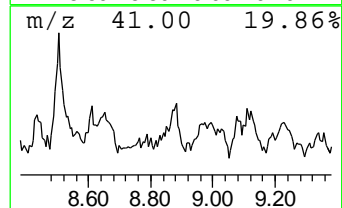
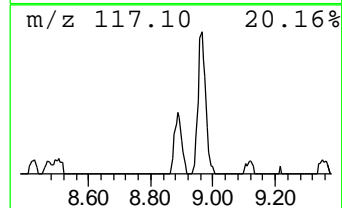
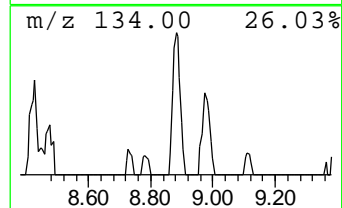
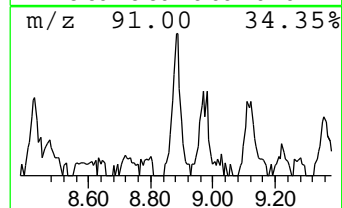
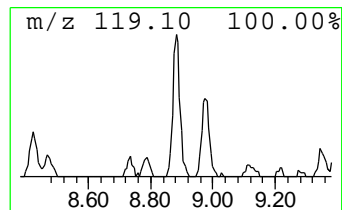
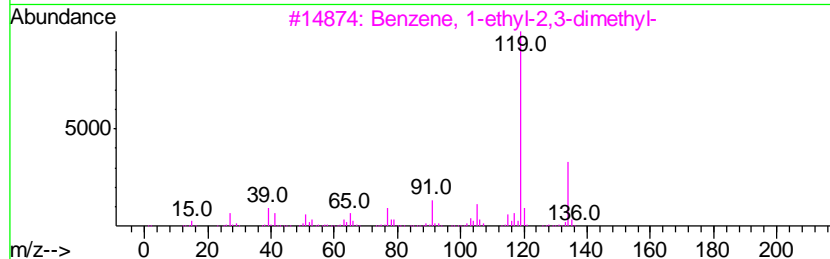
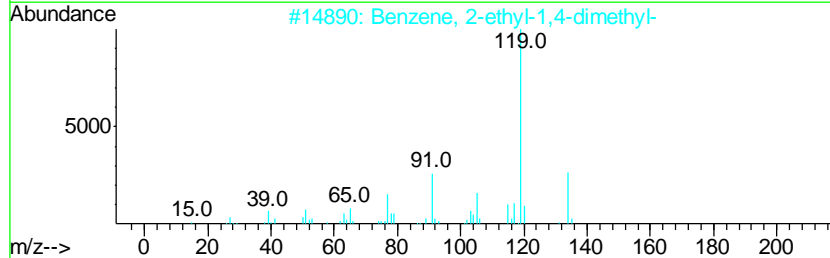
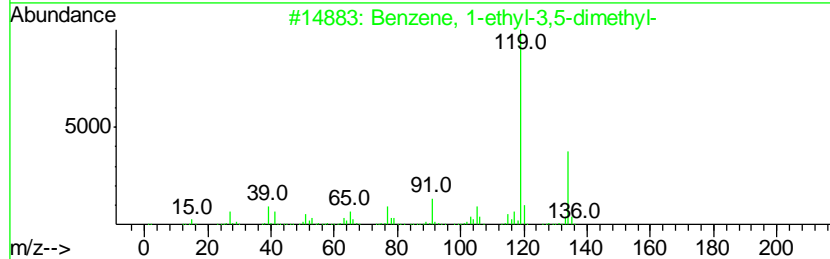
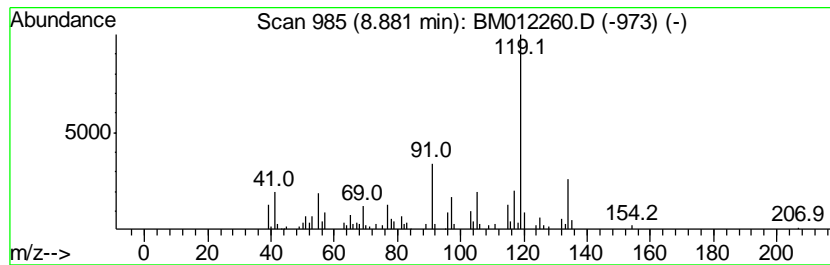
TIC Library : C:\DATABASE\NIST11.L  
 TIC Integration Parameters: LSCINT.P

\*\*\*\*\*  
 Peak Number 1 Benzene, 1-ethyl-3,5-dimethyl- Concentration Rank 5

R.T.	EstConc	Area	Relative to ISTD	R.T.
8.88	2.51 ng/ul	150974	1,4-Dichlorobenzene-d4	7.79

Hit#	of	Tentative ID	MW	MolForm	CAS#	Qual
1	5	Benzene, 1-ethyl-3,5-dimethyl-	134	C10H14	000934-74-7	81
2		Benzene, 2-ethyl-1,4-dimethyl-	134	C10H14	001758-88-9	81
3		Benzene, 1-ethyl-2,3-dimethyl-	134	C10H14	000933-98-2	81
4		Benzene, 2-ethyl-1,4-dimethyl-	134	C10H14	001758-88-9	81
5		Benzene, 4-ethyl-1,2-dimethyl-	134	C10H14	000934-80-5	81



Data Path : Z:\HPCHEM1\BNA M\DATA\BM101717\  
 Data File : BM012260.D  
 Acq On : 17 Oct 2017 22:11  
 Operator : SJ/JU  
 Sample : I5664-05  
 Misc :  
 ALS Vial : 12 Sample Multiplier: 1

Instrument :  
 BNA\_M  
 ClientSampled :  
 C0B63

Quant Method : Z:\HPCHEM1\BNA M\METHODS\SOM-EPA-BM101217.M  
 Quant Title : SVOA CALIBRATION

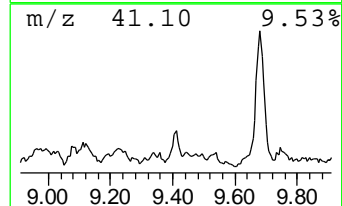
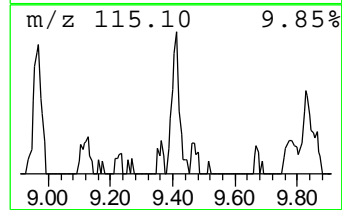
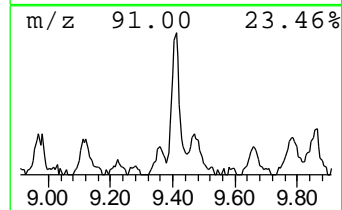
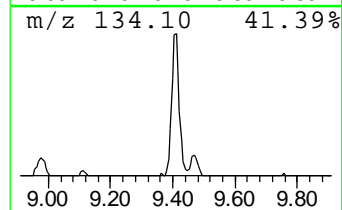
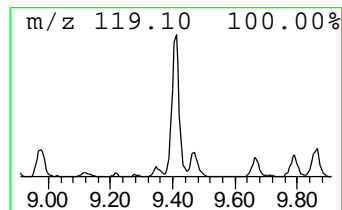
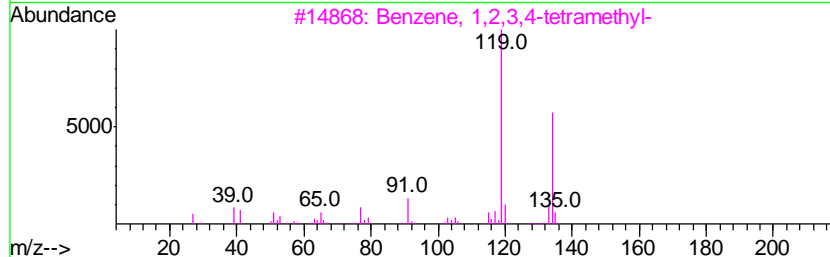
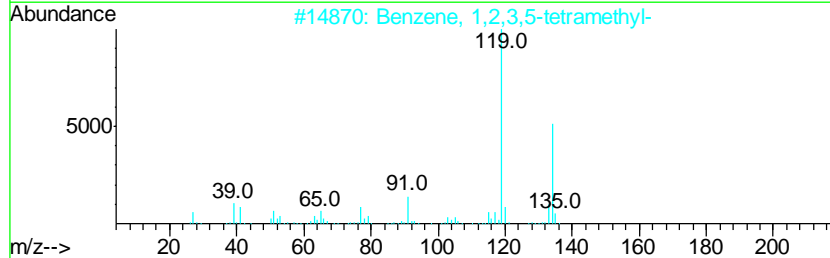
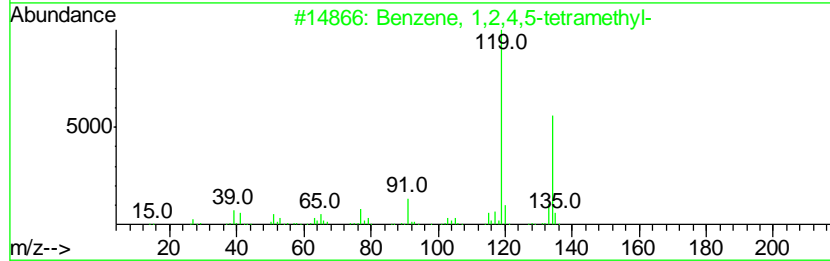
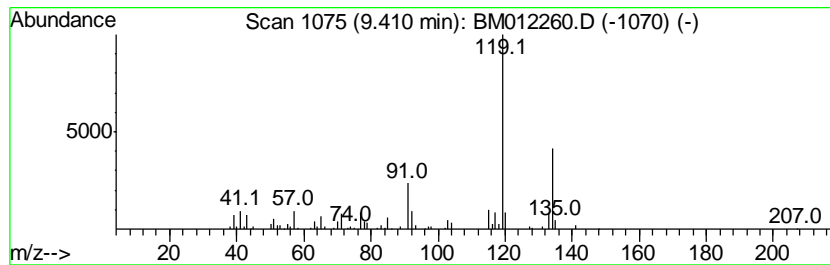
TIC Library : C:\DATABASE\NIST11.L  
 TIC Integration Parameters: LSCINT.P

\*\*\*\*\*  
 Peak Number 2 Benzene, 1,2,4,5-tetramethyl- Concentration Rank 7

R.T.	EstConc	Area	Relative to ISTD	R.T.
9.41	2.12 ng/ul	177438	Naphthalene-d8	10.59

Hit#	of	Tentative ID	MW	MolForm	CAS#	Qual
1	5	Benzene, 1,2,4,5-tetramethyl-	134	C10H14	000095-93-2	91
2		Benzene, 1,2,3,5-tetramethyl-	134	C10H14	000527-53-7	91
3		Benzene, 1,2,3,4-tetramethyl-	134	C10H14	000488-23-3	91
4		Benzene, 1,2,4,5-tetramethyl-	134	C10H14	000095-93-2	91
5		Benzene, 1,2,3,4-tetramethyl-	134	C10H14	000488-23-3	91



Data Path : Z:\HPCHEM1\BNA M\DATA\BM101717\  
 Data File : BM012260.D  
 Acq On : 17 Oct 2017 22:11  
 Operator : SJ/JU  
 Sample : I5664-05  
 Misc :  
 ALS Vial : 12 Sample Multiplier: 1

Instrument :  
 BNA\_M  
 ClientSampleID :  
 C0B63

Quant Method : Z:\HPCHEM1\BNA M\METHODS\SOM-EPA-BM101217.M  
 Quant Title : SVOA CALIBRATION

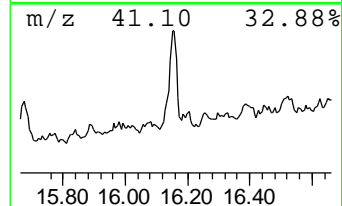
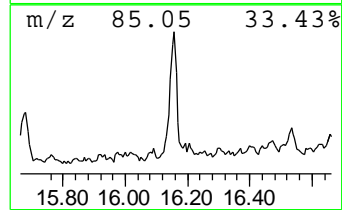
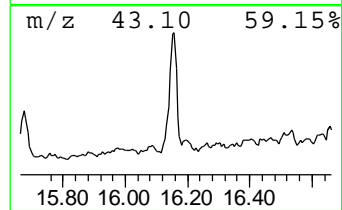
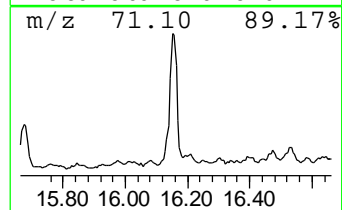
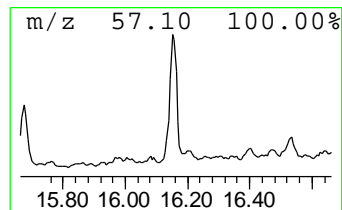
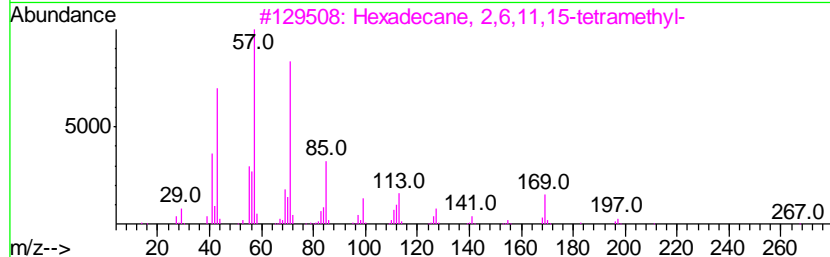
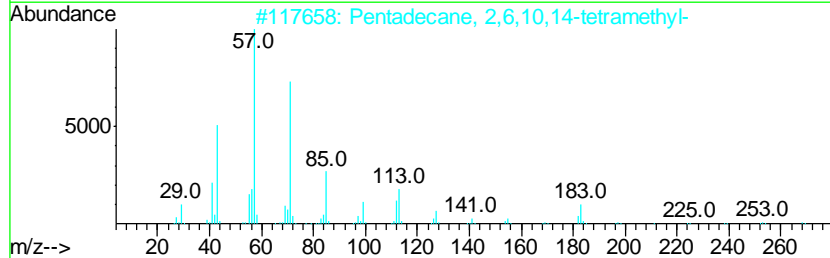
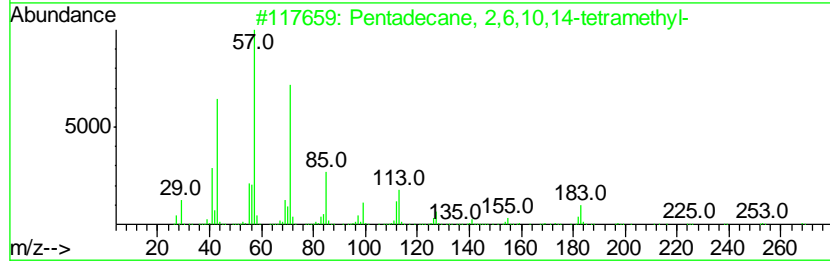
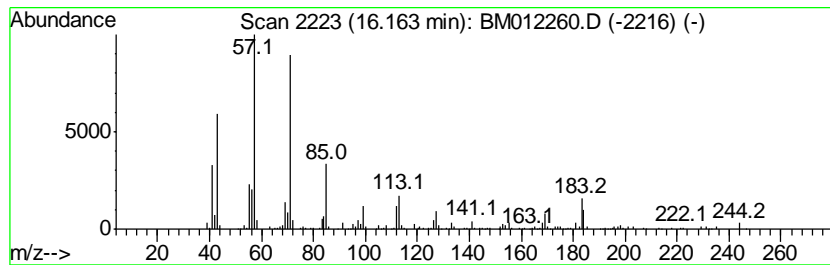
TIC Library : C:\DATABASE\NIST11.L  
 TIC Integration Parameters: LSCINT.P

\*\*\*\*\*  
 Peak Number 3 (DEL) Alkane: Straight-Chai... Concentration Rank 3

R.T.	EstConc	Area	Relative to ISTD	R.T.
16.16	3.53 ng/ul	522480	Phenanthrene-d10	17.19

Hit#	of	Tentative ID	MW	MolForm	CAS#	Qual
1	5	Pentadecane, 2,6,10,14-tetramethyl-	268	C19H40	001921-70-6	91
2		Pentadecane, 2,6,10,14-tetramethyl-	268	C19H40	001921-70-6	90
3		Hexadecane, 2,6,11,15-tetramethyl-	282	C20H42	000504-44-9	87
4		Hexadecane, 2,6,10,14-tetramethyl-	282	C20H42	000638-36-8	86
5		Hexadecane, 2,6,10,14-tetramethyl-	282	C20H42	000638-36-8	86



Data Path : Z:\HPCHEM1\BNA M\DATA\BM101717\  
 Data File : BM012260.D  
 Acq On : 17 Oct 2017 22:11  
 Operator : SJ/JU  
 Sample : I5664-05  
 Misc :  
 ALS Vial : 12 Sample Multiplier: 1

Instrument :  
 BNA\_M  
 ClientSampleID :  
 C0B63

Quant Method : Z:\HPCHEM1\BNA M\METHODS\SOM-EPA-BM101217.M  
 Quant Title : SVOA CALIBRATION

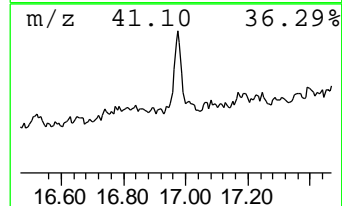
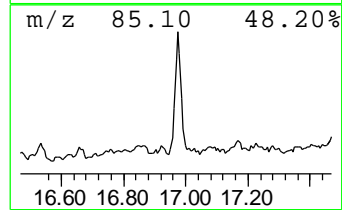
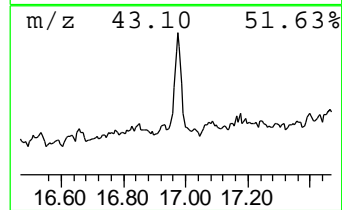
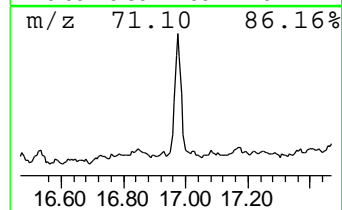
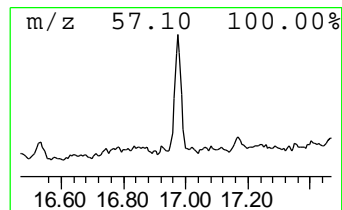
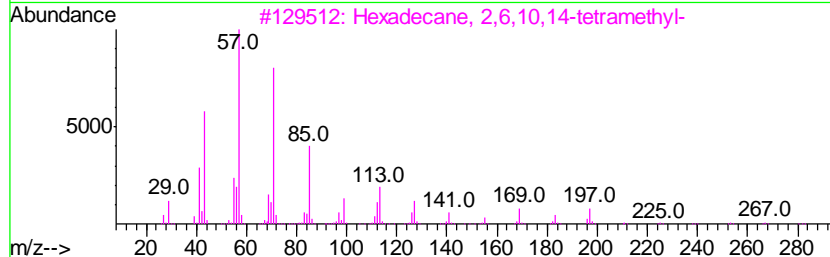
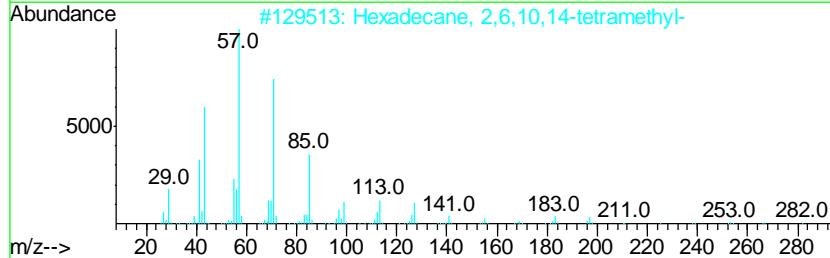
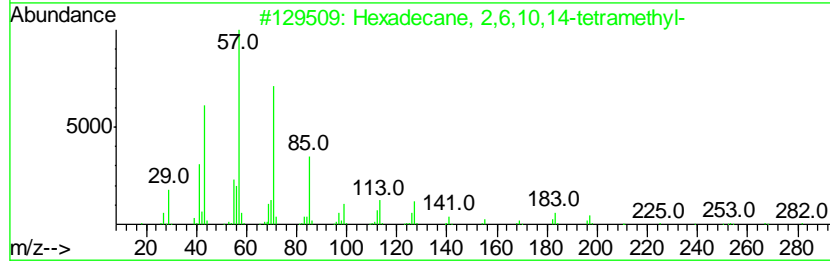
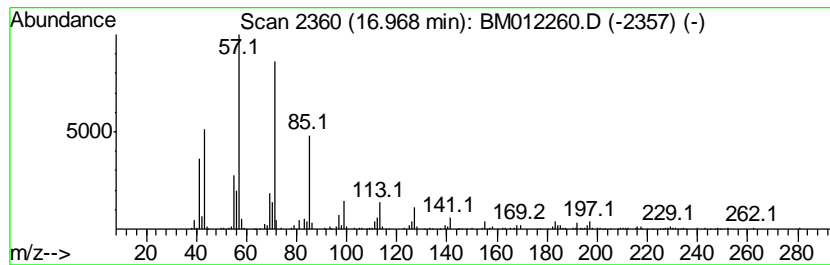
TIC Library : C:\DATABASE\NIST11.L  
 TIC Integration Parameters: LSCINT.P

\*\*\*\*\*  
 Peak Number 4 (DEL) Alkane: Straight-Chai... Concentration Rank 4

R.T.	EstConc	Area	Relative to ISTD	R.T.
16.97	3.05 ng/ul	450436	Phenanthrene-d10	17.19

Hit#	of	Tentative ID	MW	MolForm	CAS#	Qual
1	5	Hexadecane, 2,6,10,14-tetramethyl-	282	C20H42	000638-36-8	95
2		Hexadecane, 2,6,10,14-tetramethyl-	282	C20H42	000638-36-8	91
3		Hexadecane, 2,6,10,14-tetramethyl-	282	C20H42	000638-36-8	91
4		Pentadecane	212	C15H32	000629-62-9	90
5		Tetradecane	198	C14H30	000629-59-4	90



Data Path : Z:\HPCHEM1\BNA M\DATA\BM101717\  
 Data File : BM012260.D  
 Acq On : 17 Oct 2017 22:11  
 Operator : SJ/JU  
 Sample : I5664-05  
 Misc :  
 ALS Vial : 12 Sample Multiplier: 1

Instrument :  
 BNA\_M  
 ClientSampleID :  
 C0B63

Quant Method : Z:\HPCHEM1\BNA M\METHODS\SOM-EPA-BM101217.M  
 Quant Title : SVOA CALIBRATION

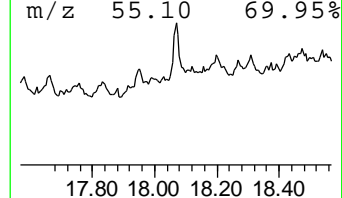
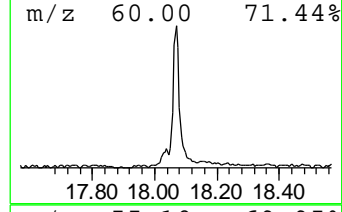
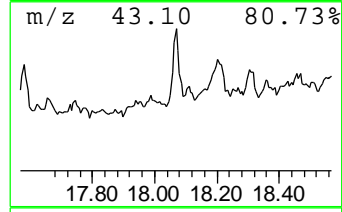
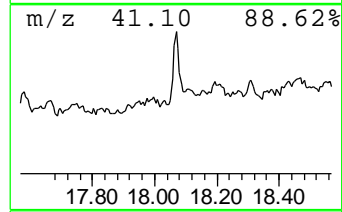
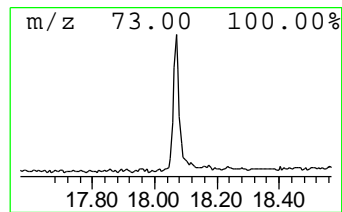
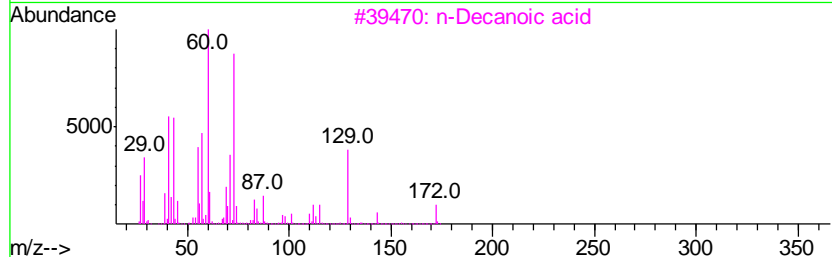
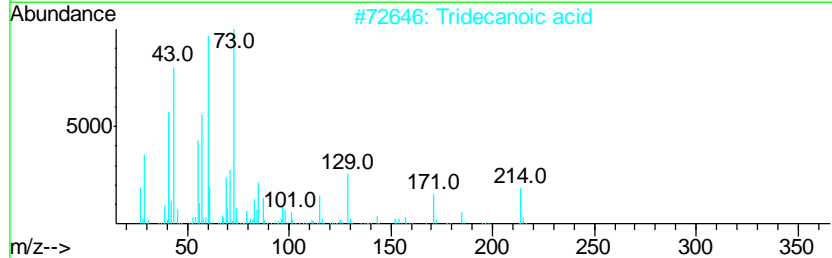
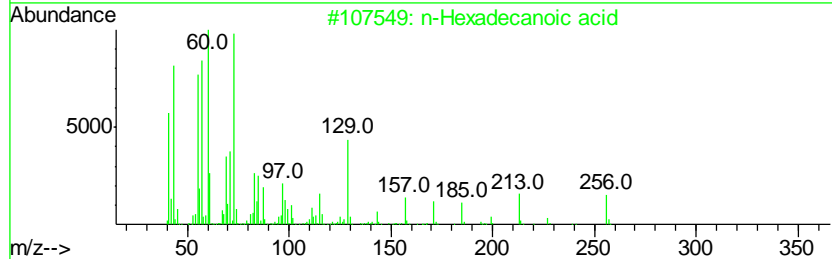
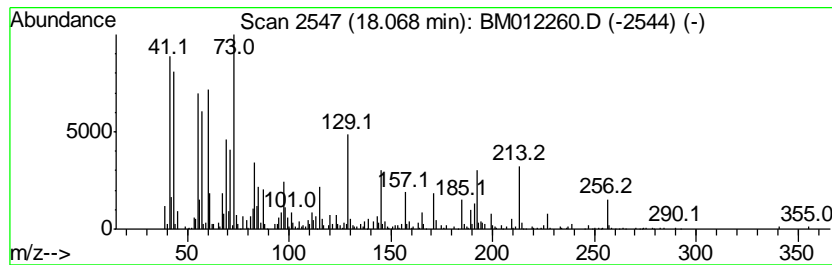
TIC Library : C:\DATABASE\NIST11.L  
 TIC Integration Parameters: LSCINT.P

\*\*\*\*\*  
 Peak Number 5 n-Hexadecanoic acid Concentration Rank 1

R.T.	EstConc	Area	Relative to ISTD	R.T.
18.07	3.99 ng/ul	589459	Phenanthrene-d10	17.19

Hit#	of	Tentative ID	MW	MolForm	CAS#	Qual
1	5	n-Hexadecanoic acid	256	C16H32O2	000057-10-3	98
2		Tridecanoic acid	214	C13H26O2	000638-53-9	91
3		n-Decanoic acid	172	C10H20O2	000334-48-5	60
4		n-Decanoic acid	172	C10H20O2	000334-48-5	55
5		n-Decanoic acid	172	C10H20O2	000334-48-5	53





Data Path : Z:\HPCHEM1\BNA M\DATA\BM101717\  
 Data File : BM012260.D  
 Acq On : 17 Oct 2017 22:11  
 Operator : SJ/JU  
 Sample : I5664-05  
 Misc :  
 ALS Vial : 12 Sample Multiplier: 1

Instrument :  
 BNA\_M  
 ClientSampleId :  
 C0B63

Quant Method : Z:\HPCHEM1\BNA M\METHODS\SOM-EPA-BM101217.M  
 Quant Title : SVOA CALIBRATION

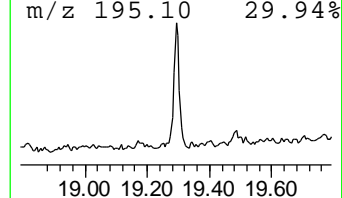
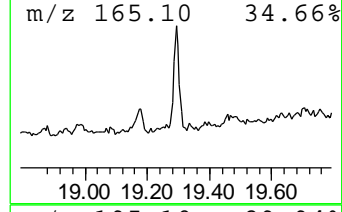
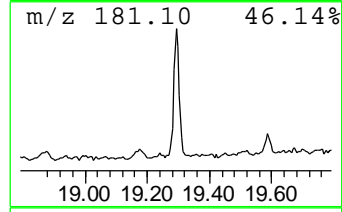
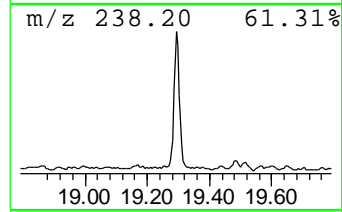
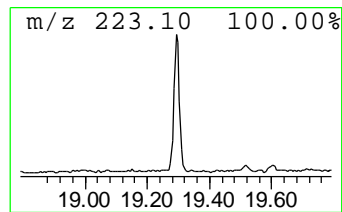
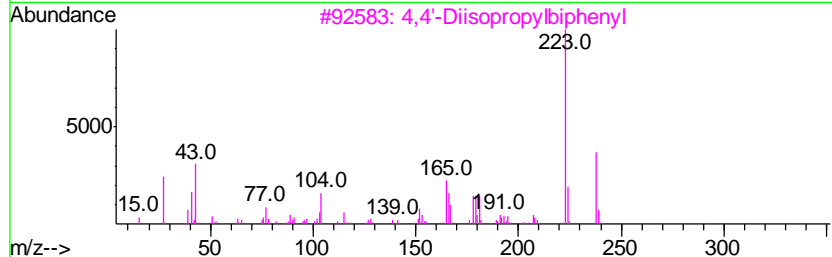
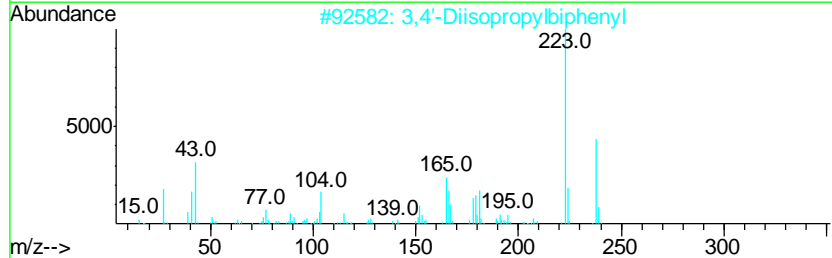
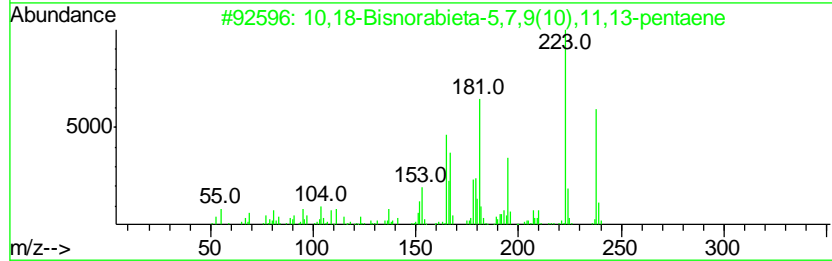
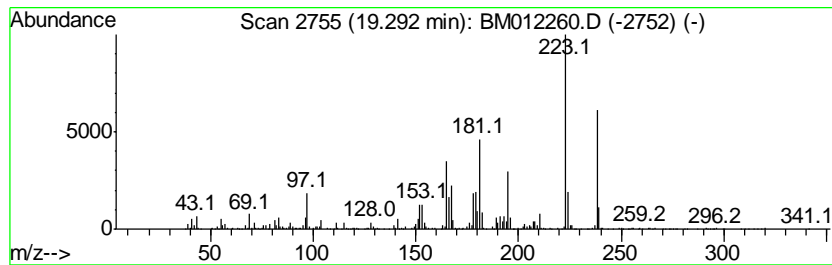
TIC Library : C:\DATABASE\NIST11.L  
 TIC Integration Parameters: LSCINT.P

\*\*\*\*\*  
 Peak Number 6 10,18-Bisnorabieta-5,7,9(10... Concentration Rank 2

R.T.	EstConc	Area	Relative to ISTD	R.T.
19.29	3.71 ng/ul	741742	Chrysene-d12	21.37

Hit#	of	Tentative ID	MW	MolForm	CAS#	Qual
1	5	10,18-Bisnorabieta-5,7,9(10),11,...	238	C18H22	006566-19-4	99
2		3,4'-Diisopropylbiphenyl	238	C18H22	061434-46-6	89
3		4,4'-Diisopropylbiphenyl	238	C18H22	018970-30-4	53
4		3,3'-Diacetylbiiphenyl	238	C16H14O2	094113-07-2	53
5		4,4'-Diisopropylbiphenyl	238	C18H22	018970-30-4	53



Data Path : Z:\HPCHEM1\BNA M\DATA\BM101717\  
 Data File : BM012260.D  
 Acq On : 17 Oct 2017 22:11  
 Operator : SJ/JU  
 Sample : I5664-05  
 Misc :  
 ALS Vial : 12 Sample Multiplier: 1

Instrument :  
 BNA\_M  
 ClientSampled :  
 C0B63

Quant Method : Z:\HPCHEM1\BNA M\METHODS\SOM-EPA-BM101217.M  
 Quant Title : SVOA CALIBRATION

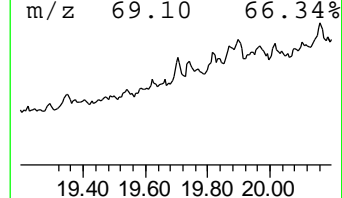
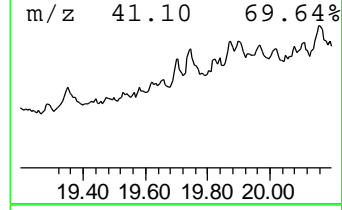
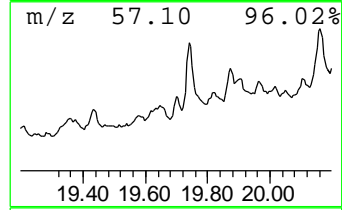
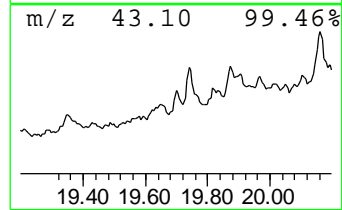
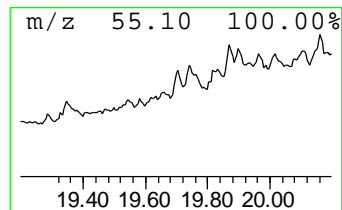
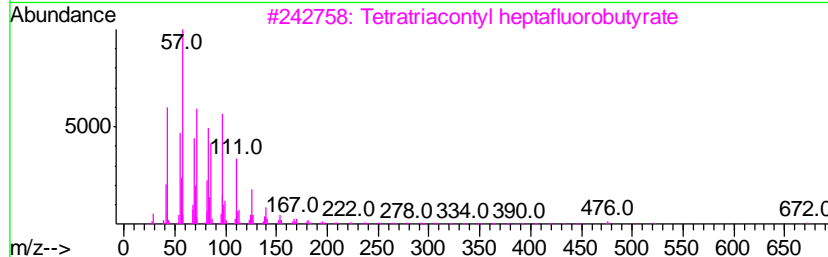
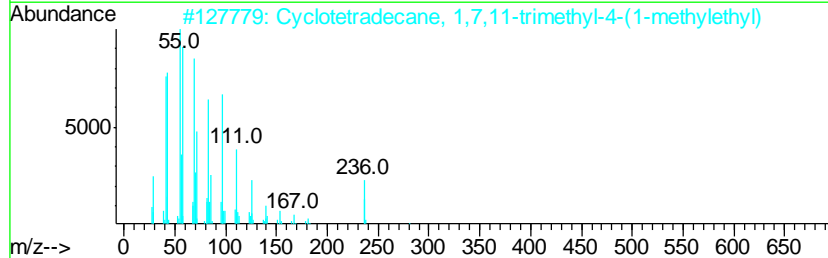
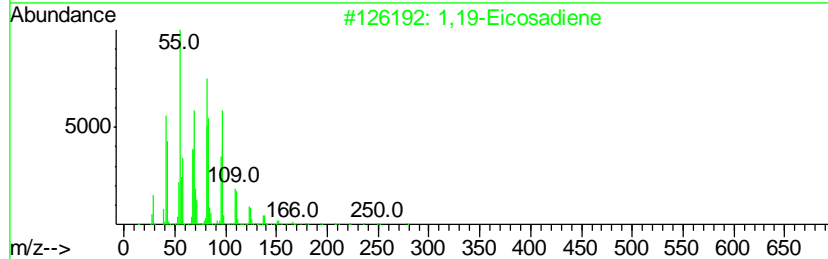
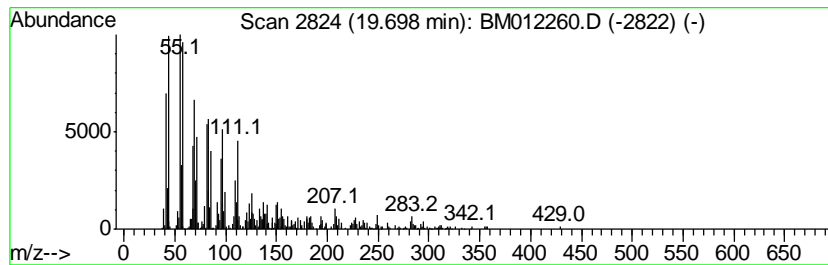
TIC Library : C:\DATABASE\NIST11.L  
 TIC Integration Parameters: LSCINT.P

\*\*\*\*\*  
 Peak Number 7 1,19-Eicosadiene Concentration Rank 6

R.T.	EstConc	Area	Relative to ISTD	R.T.
19.70	2.23 ng/ul	446341	Chrysene-d12	21.37

Hit#	of	Tentative ID	MW	MolForm	CAS#	Qual
1	5	1,19-Eicosadiene	278	C20H38	014811-95-1	78
2		Cyclotetradecane, 1,7,11-trimeth...	280	C20H40	001786-12-5	55
3		Tetratriacontyl heptafluorobutyrate	691	C38H69F7O2	1000351-84-1	53
4		Octacosyl heptafluorobutyrate	606	C32H57F7O2	1000351-83-6	53
5		Tetratriacontyl pentafluoropropi...	641	C37H69F5O2	1000351-81-5	53



Data Path : Z:\HPCHEM1\BNA\_M\DATA\BM101717\  
 Data File : BM012260.D  
 Acq On : 17 Oct 2017 22:11  
 Operator : SJ/JU  
 Sample : I5664-05  
 Misc :  
 ALS Vial : 12 Sample Multiplier: 1

Instrument :  
 BNA\_M  
 ClientSampleId :  
 C0B63

Quant Method : Z:\HPCHEM1\BNA\_M\METHODS\SOM-EPA-BM101217.M  
 Quant Title : SVOA CALIBRATION

TIC Library : C:\DATABASE\NIST11.L  
 TIC Integration Parameters: LSCINT.P

TIC Top Hit name	RT	EstConc	Units	Response	--Internal Standard--			
					#	RT	Resp	Conc
Benzene, 1-ethyl-...	8.88	2.5	ng/ul	150974	1	7.79	1202410	20.0
Benzene, 1,2,4,5-...	9.41	2.1	ng/ul	177438	2	10.59	1670580	20.0
(DEL) Alkane: Str...	16.16	3.5	ng/ul	522480	4	17.19	2957980	20.0
(DEL) Alkane: Str...	16.97	3.0	ng/ul	450436	4	17.19	2957980	20.0
n-Hexadecanoic acid	18.07	4.0	ng/ul	589459	4	17.19	2957980	20.0
10,18-Bisnorabiet...	19.29	3.7	ng/ul	741742	5	21.37	4000340	20.0
1,19-Eicosadiene	19.70	2.2	ng/ul	446341	5	21.37	4000340	20.0