

Data Path : Z:\HPCHEM1\BNA M\DATA\BM101717\  
 Data File : BM012263.D  
 Acq On : 17 Oct 2017 23:59  
 Operator : SJ/JU  
 Sample : I5664-15  
 Misc :  
 ALS Vial : 15 Sample Multiplier: 1

Instrument :  
 BNA\_M  
 ClientSampleId :  
 C0B78

Integration Parameters: LSCINT.P  
 Integrator: RTE  
 Smoothing : OFF  
 Sampling : 1  
 Start Thrs: 0.2  
 Stop Thrs : 0

Filtering: 5  
 Min Area: 1 % of largest Peak  
 Max Peaks: 100  
 Peak Location: TOP

If leading or trailing edge < 100 prefer < Baseline drop else tangent >  
 Peak separation: 5

Method : Z:\HPCHEM1\BNA M\METHODS\SOM-EPA-BM101217.M  
 Title : SVOA CALIBRATION

Signal : TIC

peak #	R.T. min	first scan	max scan	last scan	PK TY	peak height	corr. area	corr. % max.	% of total
1	6.957	652	658	678	rBV2	705258	1598479	27.14%	2.415%
2	7.116	679	685	698	rVB	556413	920426	15.63%	1.391%
3	7.316	712	719	734	rBV	824102	1382474	23.47%	2.089%
4	7.787	793	799	809	rBV	695316	1220131	20.72%	1.844%
5	8.504	914	921	940	rBV	949594	1815808	30.83%	2.744%
6	8.957	990	998	1015	rBV	871590	1547564	26.27%	2.338%
7	9.681	1114	1121	1133	rBV	573344	1081830	18.37%	1.635%
8	10.222	1206	1213	1231	rBV	805257	1629759	27.67%	2.463%
9	10.586	1268	1275	1282	rBV	904575	1528618	25.95%	2.310%
10	10.733	1293	1300	1316	rBV	679385	1384054	23.50%	2.091%
11	11.910	1493	1500	1516	rBV	165216	308727	5.24%	0.467%
12	13.851	1823	1830	1834	rBV	1888291	2702284	45.88%	4.083%
13	13.898	1834	1838	1849	rVB	1204194	1674909	28.44%	2.531%
14	14.133	1872	1878	1890	rVB	2170115	3158518	53.63%	4.773%
15	14.310	1901	1908	1918	rBV2	38448	94911	1.61%	0.143%
16	14.439	1923	1930	1943	rVB2	1546919	2366440	40.18%	3.576%
17	14.674	1963	1970	1992	rBV	353838	920324	15.63%	1.391%
18	15.192	2054	2058	2061	rBV	42420	61493	1.04%	0.093%
19	15.433	2093	2099	2114	rBV	3435628	4893507	83.08%	7.394%
20	15.580	2118	2124	2136	rBV	753376	1244877	21.14%	1.881%
21	15.674	2136	2140	2146	rVB3	45252	72285	1.23%	0.109%
22	15.798	2155	2161	2174	rVB	1688586	2289462	38.87%	3.460%
23	16.321	2245	2250	2256	rBV	51073	69881	1.19%	0.106%
24	17.192	2391	2398	2403	rBV2	2636188	3838339	65.17%	5.800%
25	17.286	2408	2414	2431	rVB2	3945517	5870938	99.68%	8.871%
26	18.068	2542	2547	2557	rBV	707285	971048	16.49%	1.467%
27	19.227	2736	2744	2751	rBV5	84027	230216	3.91%	0.348%
28	19.345	2760	2764	2773	rBV	699636	992827	16.86%	1.500%
29	19.586	2799	2805	2817	rBV	4347183	5890006	100.00%	8.900%
30	20.497	2955	2960	2964	rBV	930698	1045657	17.75%	1.580%
31	21.056	3052	3055	3060	rBV2	299894	355684	6.04%	0.537%
32	21.262	3086	3090	3096	rVB	829954	917246	15.57%	1.386%
33	21.374	3104	3109	3117	rBV	2851617	3780127	64.18%	5.712%
34	22.915	3368	3371	3377	rVB	302934	412706	7.01%	0.624%

Data Path : Z:\HPCHEM1\BNA M\DATA\BM101717\  
Data File : BM012263.D  
Acq On : 17 Oct 2017 23:59  
Operator : SJ/JU  
Sample : I5664-15  
Misc :  
ALS Vial : 15 Sample Multiplier: 1

Instrument :  
BNA\_M  
ClientSampleId :  
C0B78

Integration Parameters: LSCINT.P  
Integrator: RTE  
Smoothing : OFF Filtering: 5  
Sampling : 1 Min Area: 1 % of largest Peak  
Start Thrs: 0.2 Max Peaks: 100  
Stop Thrs : 0 Peak Location: TOP

If leading or trailing edge < 100 prefer < Baseline drop else tangent >  
Peak separation: 5

Method : Z:\HPCHEM1\BNA M\METHODS\SOM-EPA-BM101217.M  
Title : SVOA CALIBRATION

35	23.527	3467	3475	3488	rVB2	2355142	4927761	83.66%	7.446%
36	23.668	3493	3499	3507	rVB	1501207	2979251	50.58%	4.502%

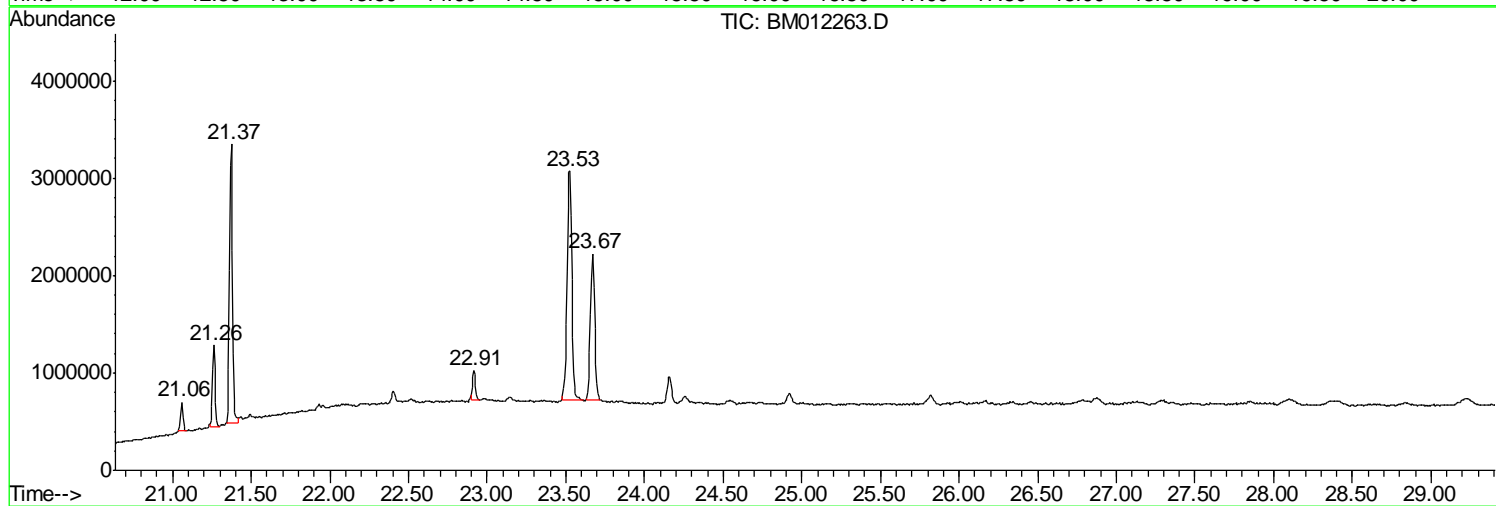
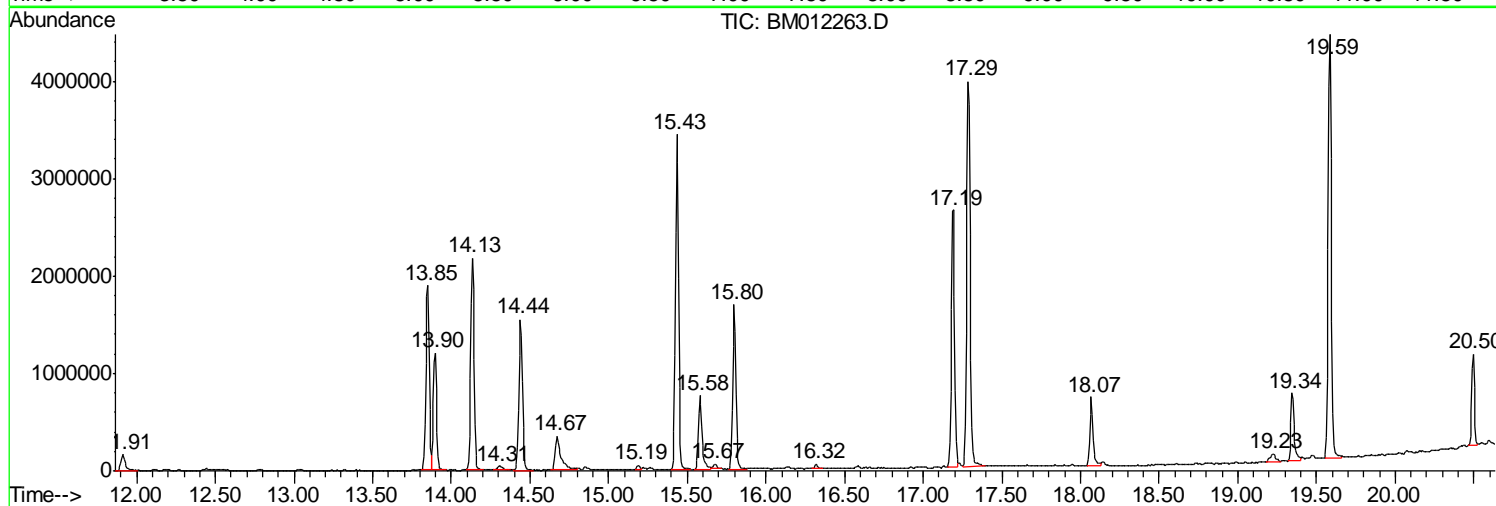
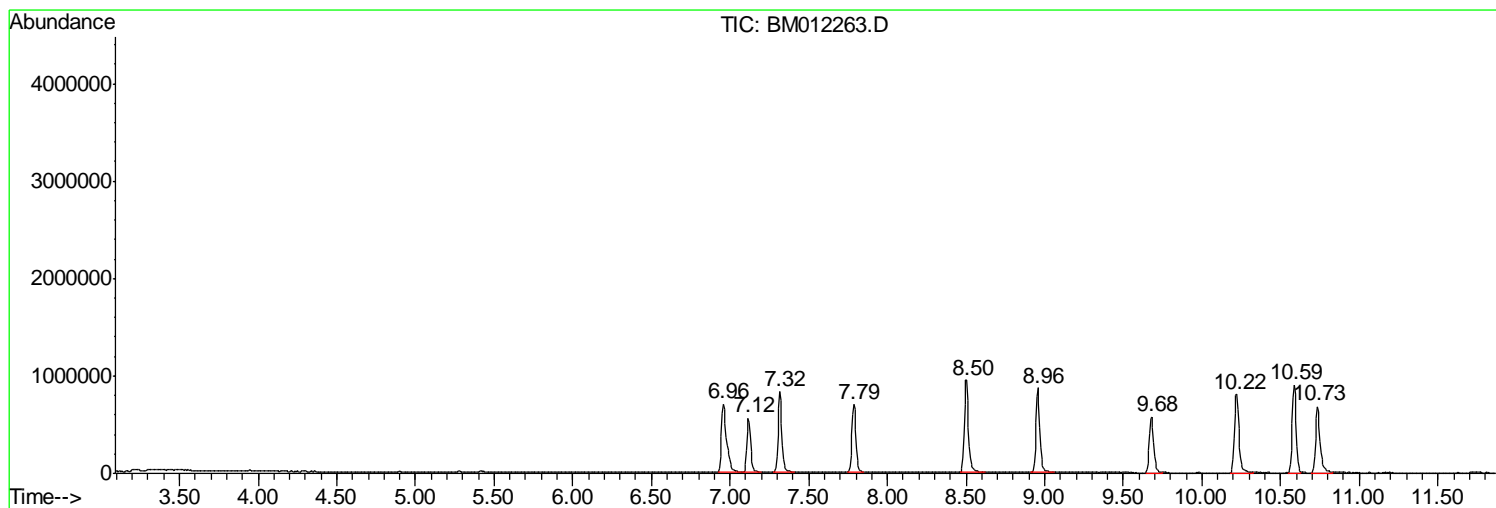
Sum of corrected areas: 66178567

Data Path : Z:\HPCHEM1\BNA M\DATA\BM101717\  
Data File : BM012263.D  
Acq On : 17 Oct 2017 23:59  
Operator : SJ/JU  
Sample : I5664-15  
Misc :  
ALS Vial : 15 Sample Multiplier: 1

Instrument :  
BNA\_M  
ClientSampleId :  
C0B78

Quant Method : Z:\HPCHEM1\BNA M\METHODS\SOM-EPA-BM101217.M  
Quant Title : SVOA CALIBRATION

TIC Library : C:\DATABASE\NIST11.L  
TIC Integration Parameters: LSCINT.P



Data Path : Z:\HPCHEM1\BNA M\DATA\BM101717\  
 Data File : BM012263.D  
 Acq On : 17 Oct 2017 23:59  
 Operator : SJ/JU  
 Sample : I5664-15  
 Misc :  
 ALS Vial : 15 Sample Multiplier: 1

Instrument :  
 BNA\_M  
 ClientSampleId :  
 C0B78

Quant Method : Z:\HPCHEM1\BNA M\METHODS\SOM-EPA-BM101217.M  
 Quant Title : SVOA CALIBRATION

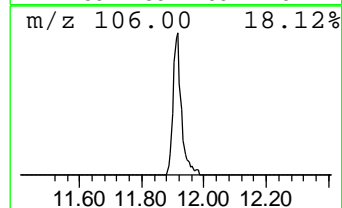
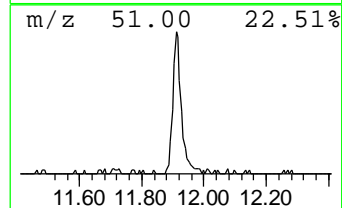
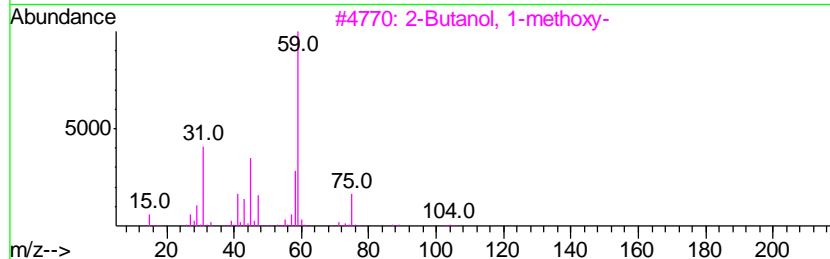
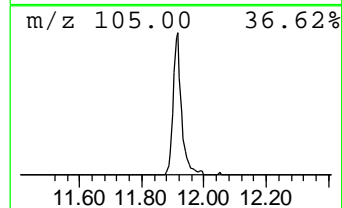
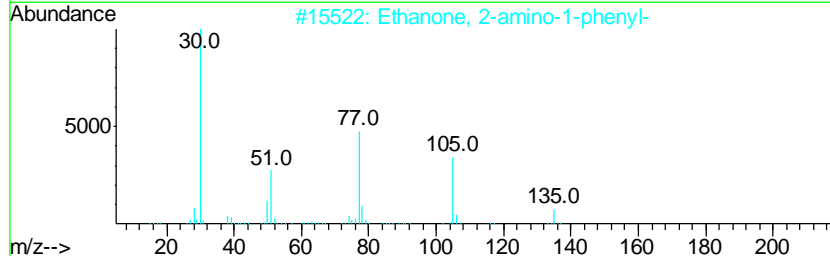
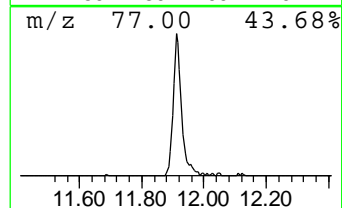
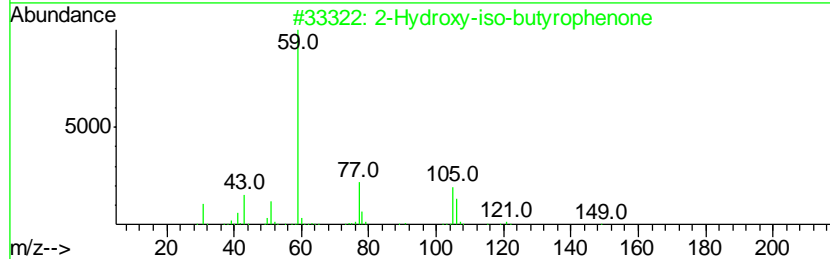
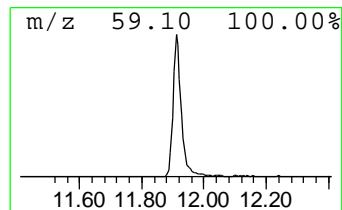
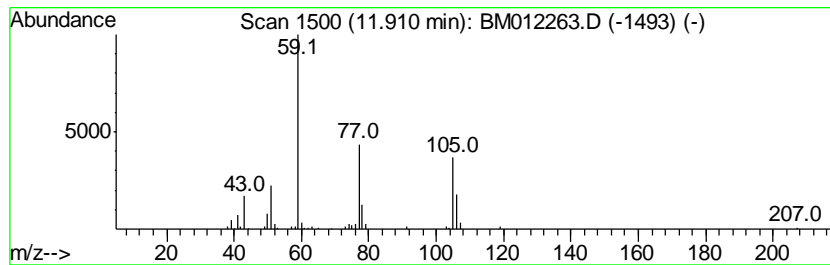
TIC Library : C:\DATABASE\NIST11.L  
 TIC Integration Parameters: LSCINT.P

\*\*\*\*\*  
 Peak Number 1 unknown-01 Concentration Rank 4

R.T.	EstConc	Area	Relative to ISTD	R.T.
11.91	4.04 ng/ul	308727	Naphthalene-d8	10.59

Hit#	of	Tentative ID	MW	MolForm	CAS#	Qual
1	5	2-Hydroxy-iso-butyrophenone	164	C10H12O2	007473-98-5	45
2		Ethanone, 2-amino-1-phenyl-	135	C8H9NO	000613-89-8	38
3		2-Butanol, 1-methoxy-	104	C5H12O2	053778-73-7	9
4		2-Propanol, 1-methoxy-2-methyl-	104	C5H12O2	003587-64-2	9
5		Propanoic acid, 2-methoxy-, meth...	118	C5H10O3	017639-76-8	9



Data Path : Z:\HPCHEM1\BNA M\DATA\BM101717\  
 Data File : BM012263.D  
 Acq On : 17 Oct 2017 23:59  
 Operator : SJ/JU  
 Sample : I5664-15  
 Misc :  
 ALS Vial : 15 Sample Multiplier: 1

Instrument :  
 BNA\_M  
 ClientSampled :  
 C0B78

Quant Method : Z:\HPCHEM1\BNA M\METHODS\SOM-EPA-BM101217.M  
 Quant Title : SVOA CALIBRATION

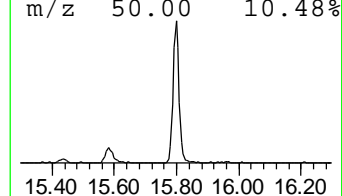
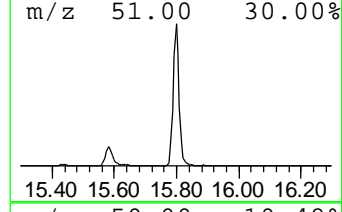
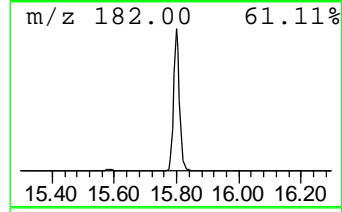
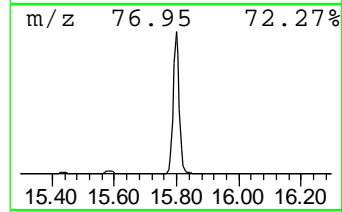
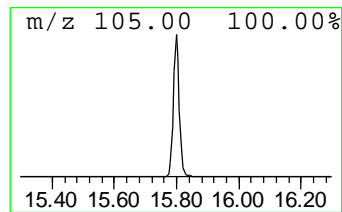
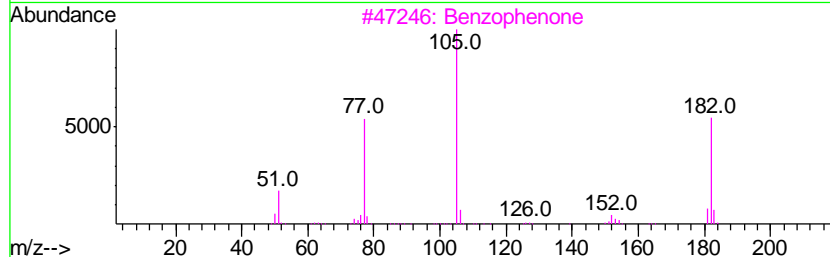
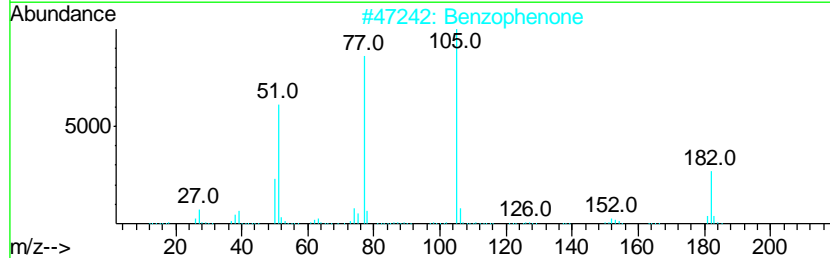
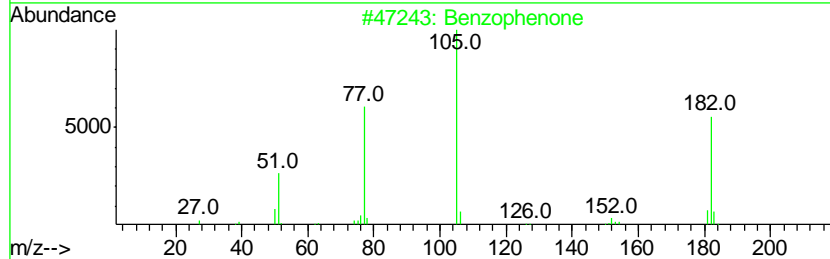
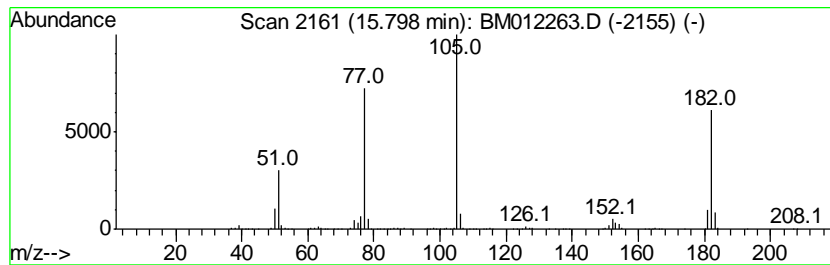
TIC Library : C:\DATABASE\NIST11.L  
 TIC Integration Parameters: LSCINT.P

\*\*\*\*\*  
 Peak Number 2 Benzophenone Concentration Rank 1

R.T.	EstConc	Area	Relative to ISTD	R.T.
15.80	19.35 ng/ul	2289460	Acenaphthene-d10	14.44

Hit#	of	Tentative ID	MW	MolForm	CAS#	Qual
1	5	Benzophenone	182	C13H10O	000119-61-9	96
2		Benzophenone	182	C13H10O	000119-61-9	95
3		Benzophenone	182	C13H10O	000119-61-9	95
4		Benzophenone	182	C13H10O	000119-61-9	94
5		Benzophenone	182	C13H10O	000119-61-9	91



Data Path : Z:\HPCHEM1\BNA M\DATA\BM101717\  
 Data File : BM012263.D  
 Acq On : 17 Oct 2017 23:59  
 Operator : SJ/JU  
 Sample : I5664-15  
 Misc :  
 ALS Vial : 15 Sample Multiplier: 1

Instrument :  
 BNA\_M  
 ClientSampleID :  
 C0B78

Quant Method : Z:\HPCHEM1\BNA M\METHODS\SOM-EPA-BM101217.M  
 Quant Title : SVOA CALIBRATION

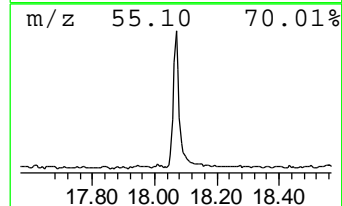
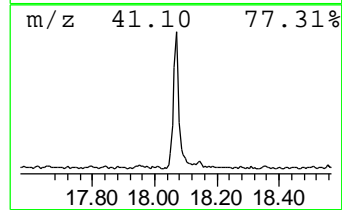
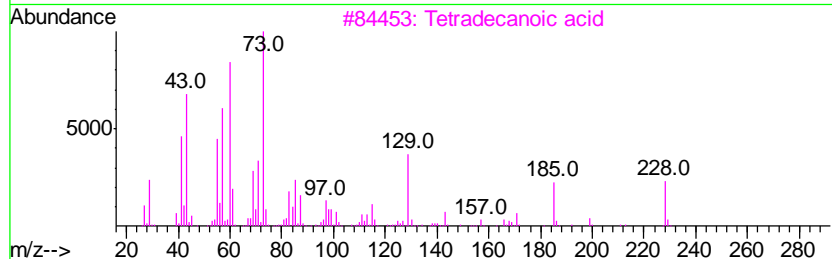
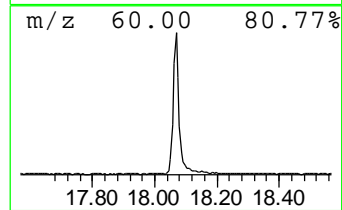
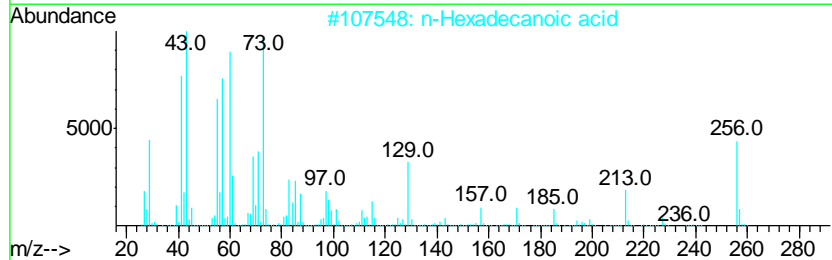
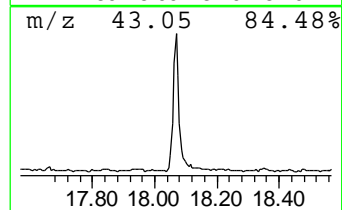
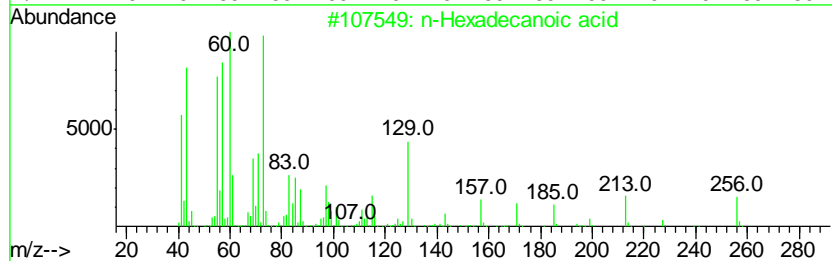
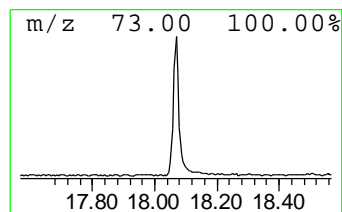
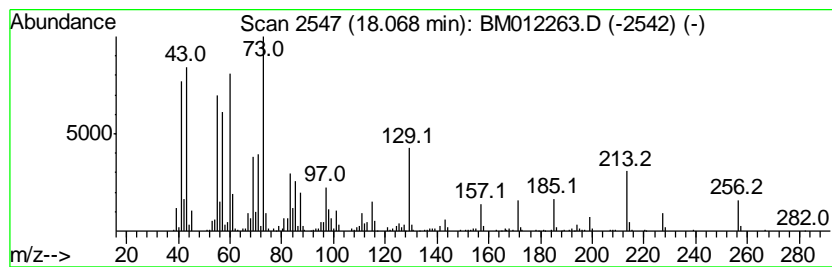
TIC Library : C:\DATABASE\NIST11.L  
 TIC Integration Parameters: LSCINT.P

\*\*\*\*\*  
 Peak Number 3 n-Hexadecanoic acid Concentration Rank 3

R.T.	EstConc	Area	Relative to ISTD	R.T.
18.07	5.06 ng/ul	971048	Phenanthrene-d10	17.19

Hit#	of	Tentative ID	MW	MolForm	CAS#	Qual
1	5	n-Hexadecanoic acid	256	C16H32O2	000057-10-3	99
2		n-Hexadecanoic acid	256	C16H32O2	000057-10-3	98
3		Tetradecanoic acid	228	C14H28O2	000544-63-8	93
4		Tetradecanoic acid	228	C14H28O2	000544-63-8	91
5		Pentadecanoic acid	242	C15H30O2	001002-84-2	90



Data Path : Z:\HPCHEM1\BNA M\DATA\BM101717\  
 Data File : BM012263.D  
 Acq On : 17 Oct 2017 23:59  
 Operator : SJ/JU  
 Sample : I5664-15  
 Misc :  
 ALS Vial : 15 Sample Multiplier: 1

Instrument :  
 BNA\_M  
 ClientSampleID :  
 C0B78

Quant Method : Z:\HPCHEM1\BNA M\METHODS\SOM-EPA-BM101217.M  
 Quant Title : SVOA CALIBRATION

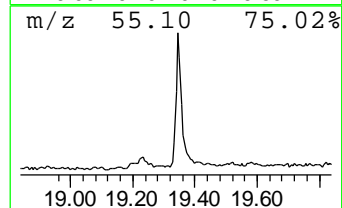
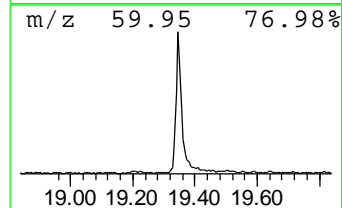
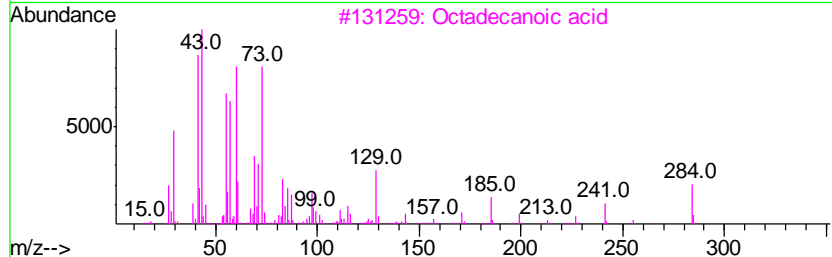
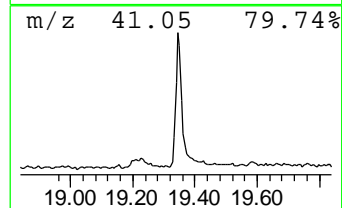
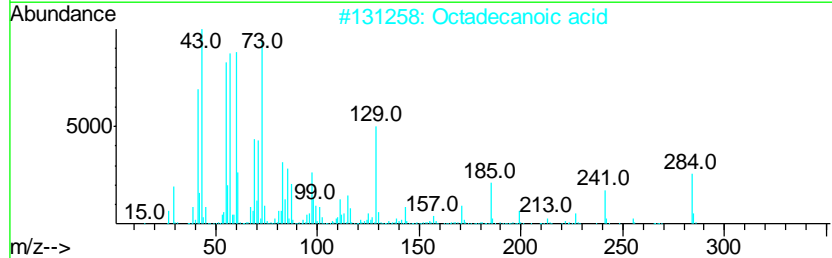
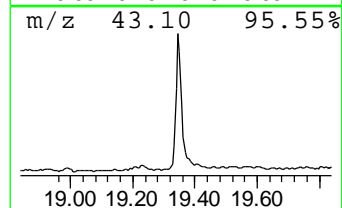
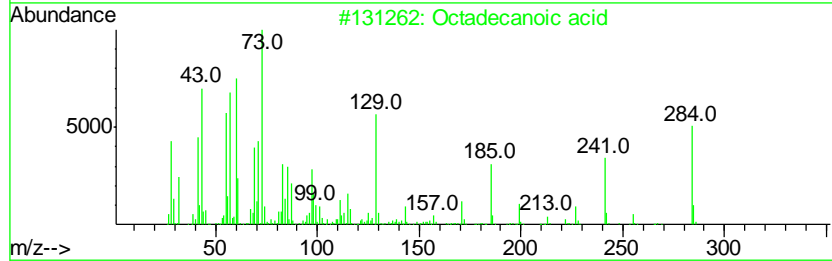
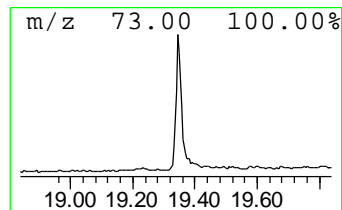
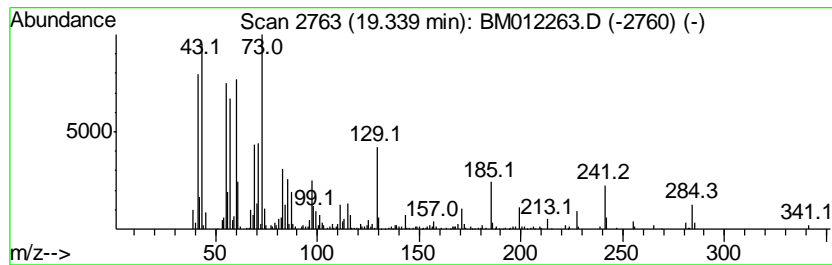
TIC Library : C:\DATABASE\NIST11.L  
 TIC Integration Parameters: LSCINT.P

\*\*\*\*\*  
 Peak Number 4 Octadecanoic acid Concentration Rank 2

R.T.	EstConc	Area	Relative to ISTD	R.T.
19.34	5.25 ng/ul	992827	Chrysene-d12	21.37

Hit#	of	Tentative ID	MW	MolForm	CAS#	Qual
1	5	Octadecanoic acid	284	C18H36O2	000057-11-4	99
2		Octadecanoic acid	284	C18H36O2	000057-11-4	99
3		Octadecanoic acid	284	C18H36O2	000057-11-4	98
4		Pentadecanoic acid	242	C15H30O2	001002-84-2	93
5		Octadecanoic acid	284	C18H36O2	000057-11-4	93



Data Path : Z:\HPCHEM1\BNA M\DATA\BM101717\  
 Data File : BM012263.D  
 Acq On : 17 Oct 2017 23:59  
 Operator : SJ/JU  
 Sample : I5664-15  
 Misc :  
 ALS Vial : 15 Sample Multiplier: 1

Instrument :  
 BNA\_M  
 ClientSampleID :  
 C0B78

Quant Method : Z:\HPCHEM1\BNA M\METHODS\SOM-EPA-BM101217.M  
 Quant Title : SVOA CALIBRATION

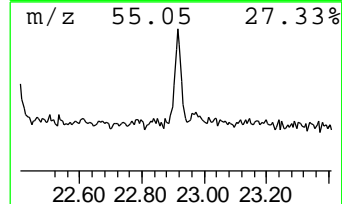
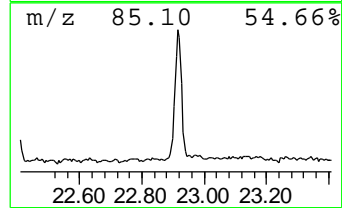
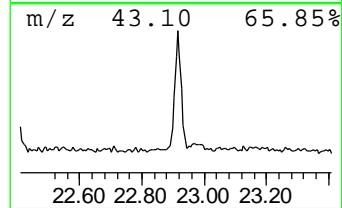
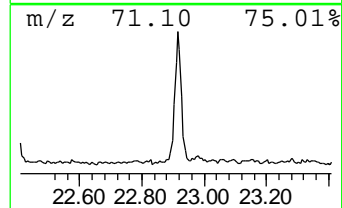
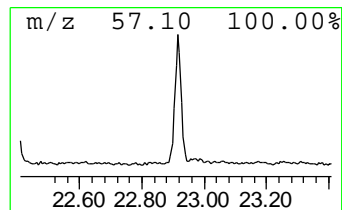
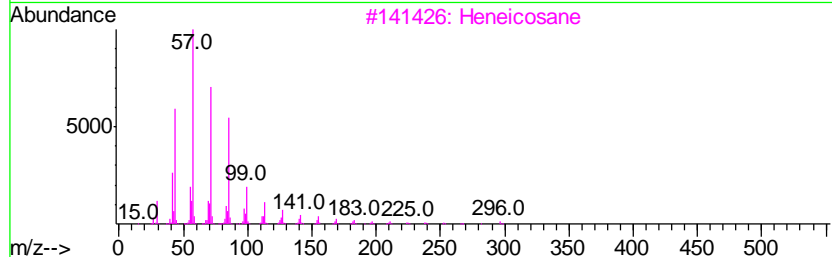
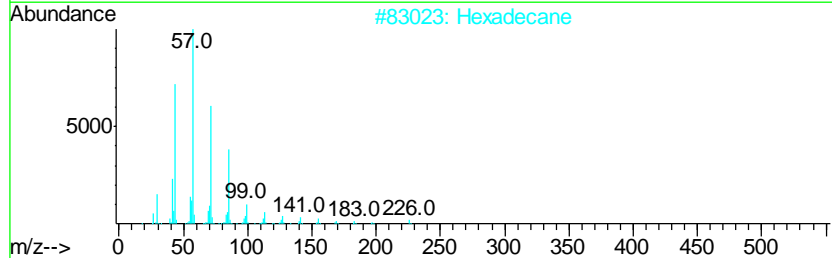
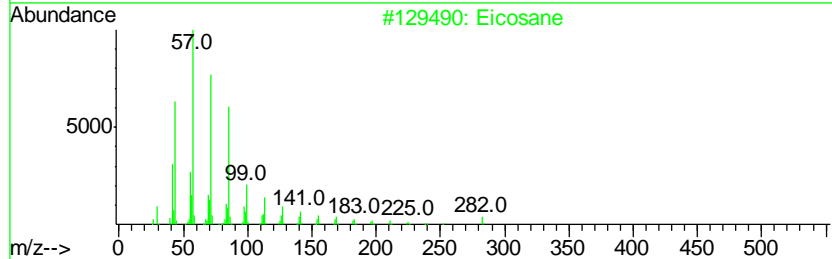
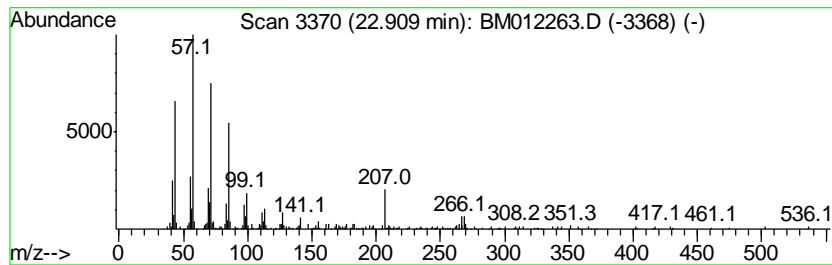
TIC Library : C:\DATABASE\NIST11.L  
 TIC Integration Parameters: LSCINT.P

\*\*\*\*\*  
 Peak Number 5 (DEL) Alkane: Straight-Chai... Concentration Rank 5

R.T.	EstConc	Area	Relative to ISTD	R.T.
22.91	2.77 ng/ul	412706	Perylene-d12	23.67

Hit#	of	Tentative ID	MW	MolForm	CAS#	Qual
1	5	Eicosane	282	C20H42	000112-95-8	95
2		Hexadecane	226	C16H34	000544-76-3	95
3		Heneicosane	296	C21H44	000629-94-7	90
4		Hexacosane	366	C26H54	000630-01-3	90
5		1-Iodo-2-methylundecane	296	C12H25I	073105-67-6	90





Data Path : Z:\HPCHEM1\BNA\_M\DATA\BM101717\  
Data File : BM012263.D  
Acq On : 17 Oct 2017 23:59  
Operator : SJ/JU  
Sample : I5664-15  
Misc :  
ALS Vial : 15 Sample Multiplier: 1

Instrument :  
BNA\_M  
ClientSampleId :  
C0B78

Quant Method : Z:\HPCHEM1\BNA\_M\METHODS\SOM-EPA-BM101217.M  
Quant Title : SVOA CALIBRATION

TIC Library : C:\DATABASE\NIST11.L  
TIC Integration Parameters: LSCINT.P

TIC Top Hit name	RT	EstConc	Units	Response	--Internal Standard--			
					#	RT	Resp	Conc
unknown-01	11.91	4.0	ng/ul	308727	2	10.59	1528620	20.0
Benzophenone	15.80	19.4	ng/ul	2289460	3	14.44	2366440	20.0
n-Hexadecanoic acid	18.07	5.1	ng/ul	971048	4	17.19	3838340	20.0
Octadecanoic acid	19.34	5.3	ng/ul	992827	5	21.37	3780130	20.0
(DEL) Alkane: Str...	22.91	2.8	ng/ul	412706	6	23.67	2979250	20.0