

Data Path : Z:\HPCHEM1\BNA M\DATA\BM101817\
 Data File : BM012296.D
 Acq On : 19 Oct 2017 01:26
 Operator : SJ/JU
 Sample : I5656-09
 Misc :
 ALS Vial : 16 Sample Multiplier: 1

Instrument :
 BNA_M
 ClientSampleId :

Quant Time: Oct 19 02:15:46 2017
 Quant Method : Z:\HPCHEM1\BNA M\METHODS\SOM-EPA-BM101217.M
 Quant Title : SVOA CALIBRATION
 QLast Update : Wed Oct 18 23:09:30 2017
 Response via : Initial Calibration

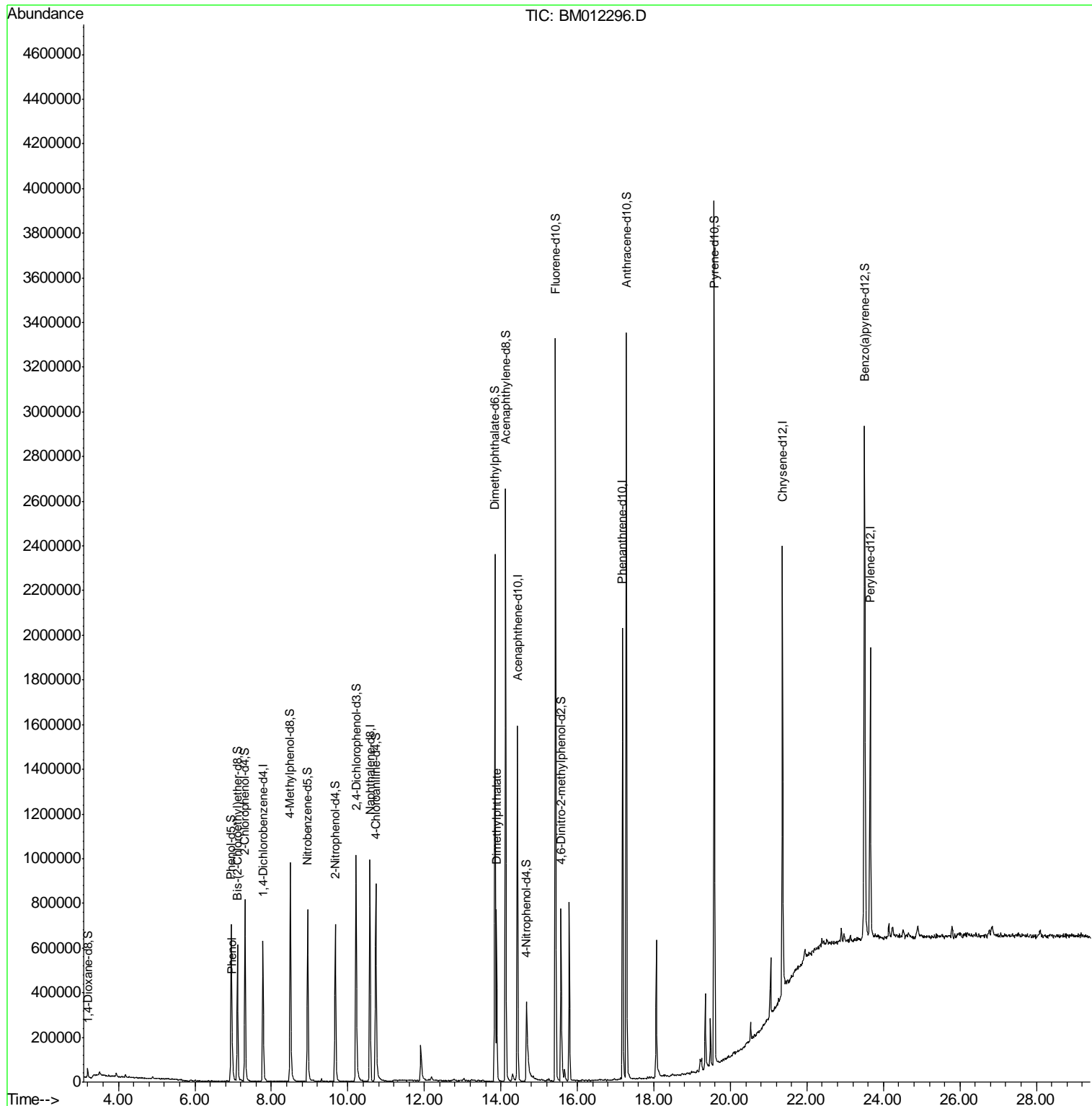
Internal Standards	R.T.	QIon	Response	Conc	Units	Dev(Min)
1) 1,4-Dichlorobenzene-d4	7.77	152	195961	20.00	ng/ul	0.00
18) Naphthalene-d8	10.57	136	840277	20.00	ng/ul	0.00
35) Acenaphthene-d10	14.43	164	531307	20.00	ng/ul	0.00
61) Phenanthrene-d10	17.18	188	1159721	20.00	ng/ul	0.00
75) Chrysene-d12	21.36	240	1049707	20.00	ng/ul	0.00
83) Perylene-d12	23.66	264	997207	20.00	ng/ul	0.00
System Monitoring Compounds						
3) 1,4-Dioxane-d8	3.20	96	20477	4.97	ng/uL	0.00
5) Phenol-d5	6.95	99	433948	27.29	ng/ul	0.00
7) Bis-(2-Chloroethyl)ether-d	7.11	67	259797	27.25	ng/ul	0.00
9) 2-Chlorophenol-d4	7.31	132	397871	29.50	ng/ul	0.00
13) 4-Methylphenol-d8	8.49	113	406403	29.69	ng/ul	0.00
19) Nitrobenzene-d5	8.95	128	202353	31.56	ng/ul	0.00
22) 2-Nitrophenol-d4	9.67	143	249135	33.25	ng/ul	0.00
26) 2,4-Dichlorophenol-d3	10.21	165	457476	31.98	ng/ul	0.00
29) 4-Chloroaniline-d4	10.73	131	554670	41.43	ng/ul	0.00
43) Dimethylphthalate-d6	13.84	166	1606996	34.22	ng/ul	0.00
46) Acenaphthylene-d8	14.13	160	1907642	33.56	ng/ul	0.00
51) 4-Nitrophenol-d4	14.67	143	156920	22.23	ng/ul	0.00
57) Fluorene-d10	15.43	176	1319041	34.22	ng/ul	0.00
62) 4,6-Dinitro-2-methylphenol	15.57	200	222669	27.98	ng/ul	0.00
70) Anthracene-d10	17.28	188	1960363	34.19	ng/ul	0.00
76) Pyrene-d10	19.57	212	2102302	39.45	ng/ul	0.00
87) Benzo(a)pyrene-d12	23.51	264	1709406	35.56	ng/ul	0.00
Target Compounds						
6) Phenol	6.97	94	66183	4.027	ng/ul#	89
44) Dimethylphthalate	13.89	163	510445	10.850	ng/ul	99

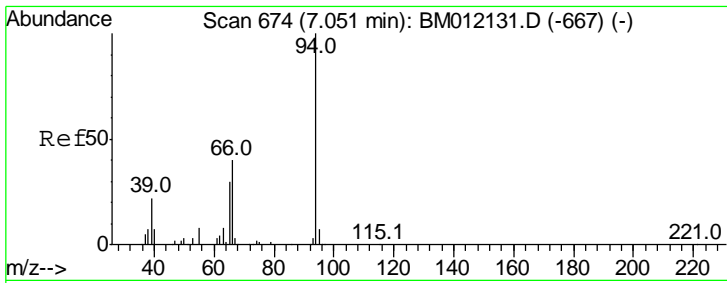
(#) = qualifier out of range (m) = manual integration (+) = signals summed

Data Path : Z:\HPCHEM1\BNA M\DATA\BM101817\
 Data File : BM012296.D
 Acq On : 19 Oct 2017 01:26
 Operator : SJ/JU
 Sample : I5656-09
 Misc :
 ALS Vial : 16 Sample Multiplier: 1

Instrument :
 BNA_M
 ClientSampled :

Quant Time: Oct 19 02:15:46 2017
 Quant Method : Z:\HPCHEM1\BNA M\METHODS\SOM-EPA-BM101217.M
 Quant Title : SVOA CALIBRATION
 QLast Update : Wed Oct 18 23:09:30 2017
 Response via : Initial Calibration

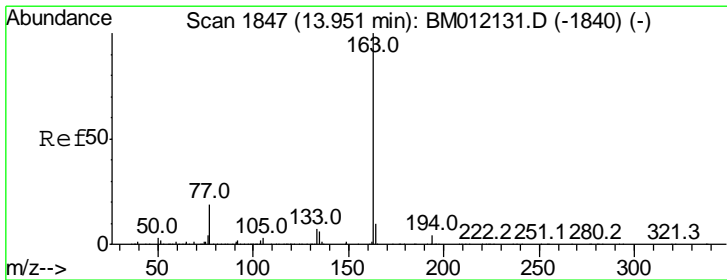
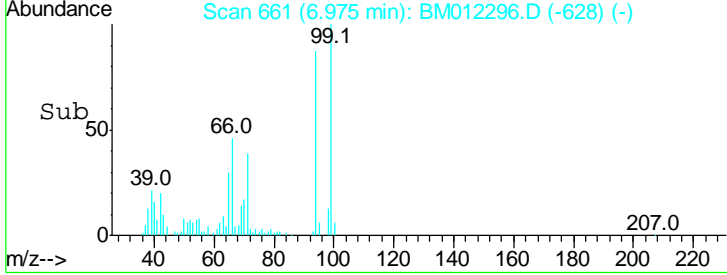
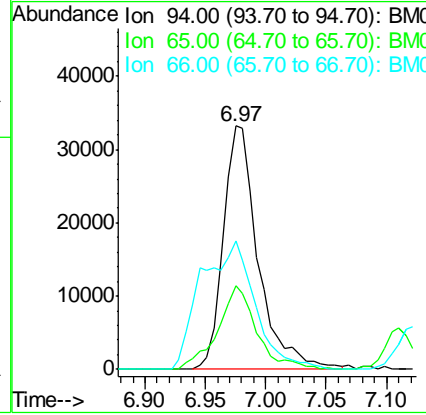
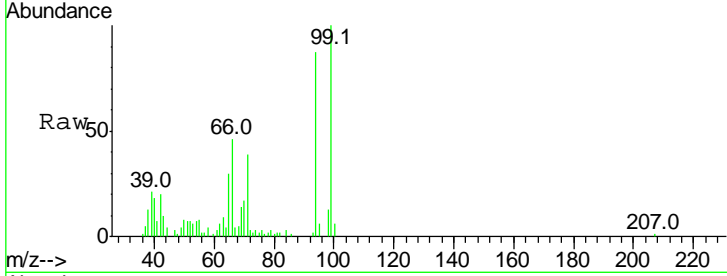




#6
 Phenol
 Concen: 4.027 ng/ul
 RT: 6.97 min Scan# 661
 Delta R.T. -0.01 min
 Lab File: BM012296.D
 Acq: 19 Oct 2017 01:26

Instrument :
 BNA_M
 ClientSampled :

Tgt Ion	Resp	Lower	Upper
94	100		
65	34.4	24.4	36.6
66	52.8	35.0	52.4



#44
 Dimethylphthalate
 Concen: 10.850 ng/ul
 RT: 13.89 min Scan# 1836
 Delta R.T. -0.01 min
 Lab File: BM012296.D
 Acq: 19 Oct 2017 01:26

Tgt Ion	Resp	Lower	Upper
163	100		
194	4.1	3.7	5.5
164	9.9	8.1	12.1

