

Data Path : Z:\HPCHEM1\BNA M\DATA\BM102117\  
 Data File : BM012392.D  
 Acq On : 22 Oct 2017 11:43  
 Operator : SJ/JU  
 Sample : I5756-18  
 Misc :  
 ALS Vial : 44 Sample Multiplier: 1

Instrument :  
 BNA\_M  
 ClientSampled :  
 B0CX4

Manual Integrations  
 APPROVED

Sohil  
 10/23/2017 4:00:38 PM

Quant Time: Oct 23 09:07:33 2017  
 Quant Method : Z:\HPCHEM1\BNA M\METHODS\SOM-EPA-BM101217.M  
 Quant Title : SVOA CALIBRATION  
 QLast Update : Mon Oct 23 08:22:49 2017  
 Response via : Initial Calibration

Internal Standards	R.T.	QIon	Response	Conc	Units	Dev(Min)
1) 1,4-Dichlorobenzene-d4	7.76	152	240309	20.00	ng/ul	0.00
18) Naphthalene-d8	10.56	136	1041166	20.00	ng/ul	0.00
35) Acenaphthene-d10	14.41	164	634651	20.00	ng/ul	0.00
61) Phenanthrene-d10	17.17	188	1471157	20.00	ng/ul	0.00
75) Chrysene-d12	21.35	240	1328188	20.00	ng/ul	0.00
83) Perylene-d12	23.64	264	1086302	20.00	ng/ul	0.00
System Monitoring Compounds						
3) 1,4-Dioxane-d8	3.19	96	16376	3.24	ng/uL	0.00
5) Phenol-d5	6.94	99	410976	21.08	ng/ul	0.00
7) Bis-(2-Chloroethyl)ether-d	7.10	67	257506	22.02	ng/ul	0.00
9) 2-Chlorophenol-d4	7.30	132	371766	22.48	ng/ul	0.00
13) 4-Methylphenol-d8	8.48	113	313583	18.68	ng/ul	0.00
19) Nitrobenzene-d5	8.93	128	179558	22.60	ng/ul	0.00
22) 2-Nitrophenol-d4	9.65	143	218059	23.49	ng/ul	0.00
26) 2,4-Dichlorophenol-d3	10.20	165	395693	22.32	ng/ul	0.00
29) 4-Chloroaniline-d4	10.71	131	381572	23.00	ng/ul	0.00
43) Dimethylphthalate-d6	13.82	166	1381601	24.63	ng/ul	0.00
46) Acenaphthylene-d8	14.11	160	1689658	24.88	ng/ul	0.00
51) 4-Nitrophenol-d4	14.67	143	113067	13.41	ng/ul	0.01
57) Fluorene-d10	15.41	176	1192945	25.91	ng/ul	0.00
62) 4,6-Dinitro-2-methylphenol	15.57	200	125368	12.42	ng/ul	0.00
70) Anthracene-d10	17.27	188	1806611	24.84	ng/ul	0.00
76) Pyrene-d10	19.57	212	2081486	30.87	ng/ul	0.00
87) Benzo(a)pyrene-d12	23.50	264	1373103	26.22	ng/ul	0.00
Target Compounds						
6) Phenol	6.97	94	112252	5.569	ng/ul#	88
44) Dimethylphthalate	13.87	163	768332	13.672	ng/ul	99
69) Phenanthrene	17.21	178	155656	1.860	ng/ul	99
71) Anthracene	17.21	178	155656	1.797	ng/ul	99
74) Fluoranthene	19.23	202	319908	3.167	ng/ul#	97
77) Pyrene	19.59	202	311308	3.549	ng/ul	99
80) Benzo(a)anthracene	21.34	228	131376	1.520	ng/ul	96
82) Chrysene	21.39	228	144276m	1.778	ng/ul	
85) Benzo(b)fluoranthene	22.95	252	155245	2.190	ng/ul#	82
88) Benzo(a)pyrene	23.54	252	106307	1.591	ng/ul#	84
91) Benzo(g,h,i)perylene	26.71	276	93170	1.603	ng/ul#	94

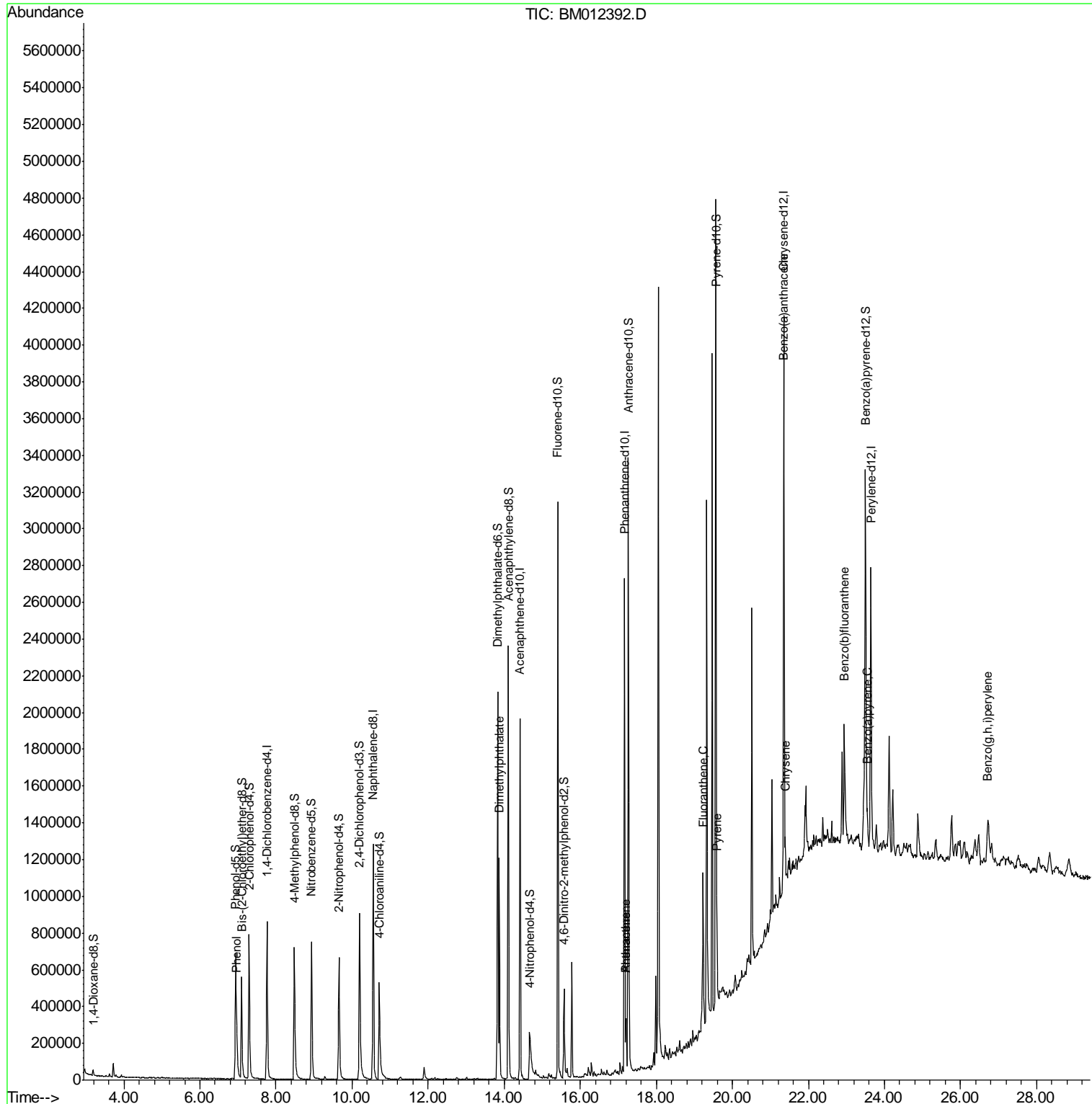
(#) = qualifier out of range (m) = manual integration (+) = signals summed

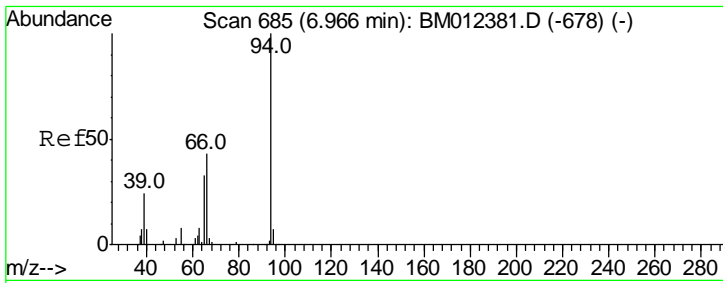
Data Path : Z:\HPCHEM1\BNA M\DATA\BM102117\  
 Data File : BM012392.D  
 Acq On : 22 Oct 2017 11:43  
 Operator : SJ/JU  
 Sample : I5756-18  
 Misc :  
 ALS Vial : 44 Sample Multiplier: 1

Instrument :  
 BNA\_M  
 Client Sampled :  
 B0CX4

Manual Integrations  
**APPROVED**  
 Sohil  
 10/23/2017 4:00:38 PM

Quant Time: Oct 23 09:07:33 2017  
 Quant Method : Z:\HPCHEM1\BNA M\METHODS\SOM-EPA-BM101217.M  
 Quant Title : SVOA CALIBRATION  
 QLast Update : Mon Oct 23 08:22:49 2017  
 Response via : Initial Calibration



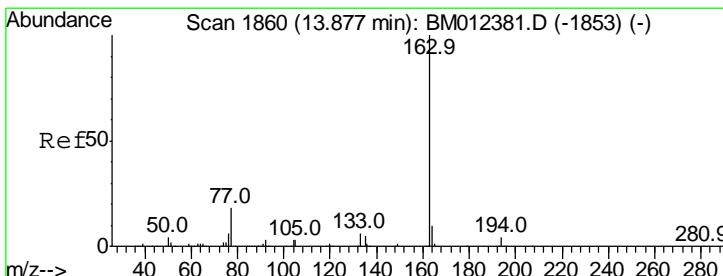
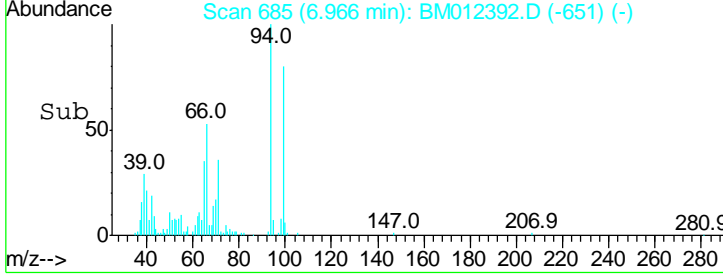
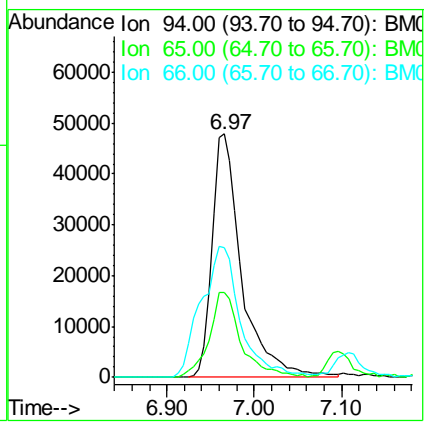
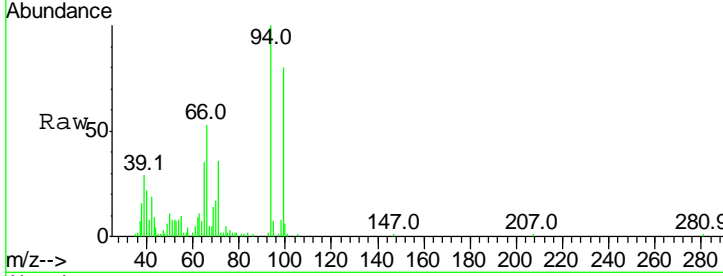


#6  
 Phenol  
 Concen: 5.569 ng/ul  
 RT: 6.97 min Scan# 685  
 Delta R.T. 0.00 min  
 Lab File: BM012392.D  
 Acq: 22 Oct 2017 11:43

**Instrument :**  
 BNA\_M  
**ClientSampled :**  
 B0CX4

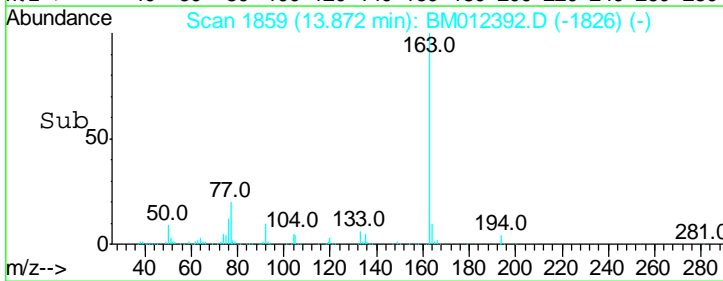
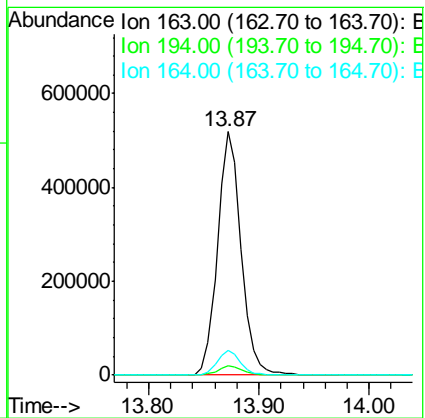
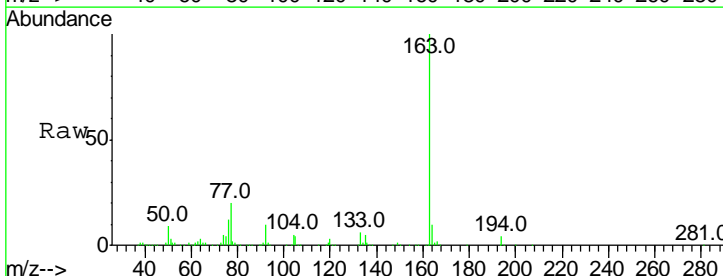
Tgt Ion	Ratio	Lower	Upper
94	100		
65	34.8	24.4	36.6
66	53.1	35.0	52.4

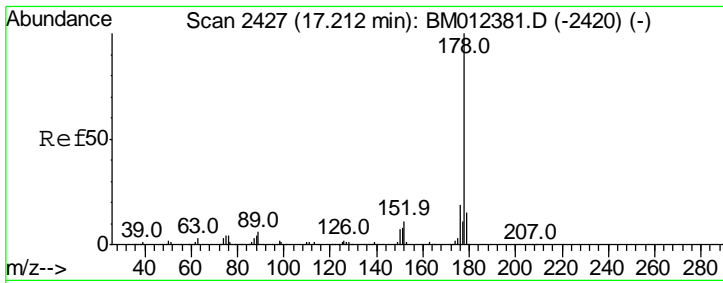
**Manual Integrations**  
**APPROVED**  
 Sohil  
 10/23/2017 4:00:38 PM



#44  
 Dimethylphthalate  
 Concen: 13.672 ng/ul  
 RT: 13.87 min Scan# 1859  
 Delta R.T. -0.01 min  
 Lab File: BM012392.D  
 Acq: 22 Oct 2017 11:43

Tgt Ion	Ratio	Lower	Upper
163	100		
194	4.0	3.7	5.5
164	10.3	8.1	12.1





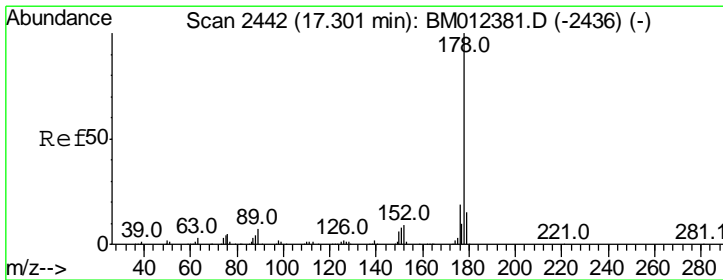
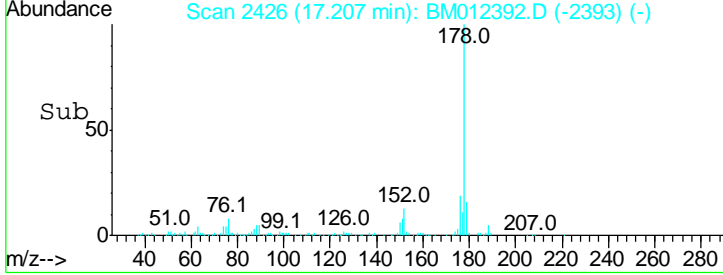
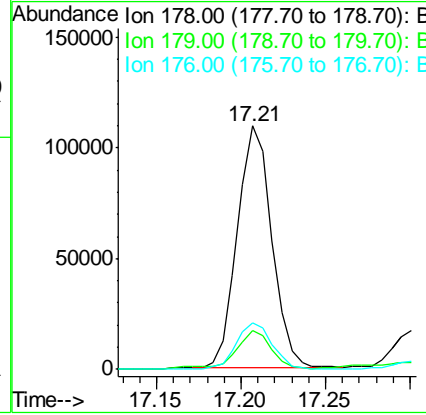
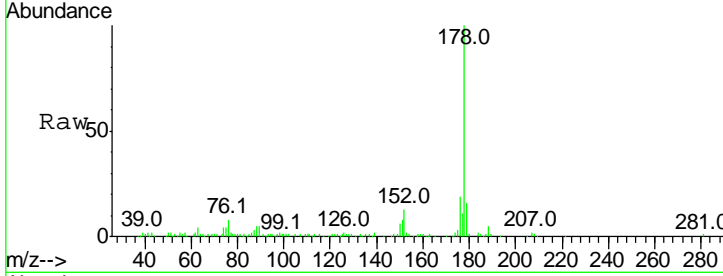
#69  
 Phenanthrene  
 Concen: 1.860 ng/ul  
 RT: 17.21 min Scan# 2426  
 Delta R.T. -0.01 min  
 Lab File: BM012392.D  
 Acq: 22 Oct 2017 11:43

**Instrument :**  
 BNA\_M  
**ClientSampled :**  
 B0CX4

Tgt Ion	Ratio	Lower	Upper
178	100		
179	15.7	12.0	18.0
176	19.1	15.0	22.6

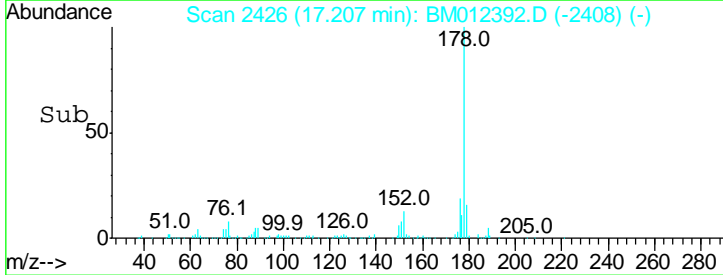
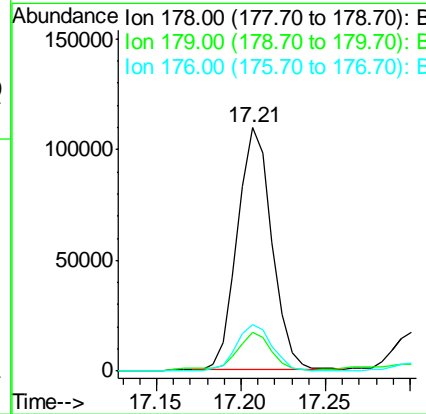
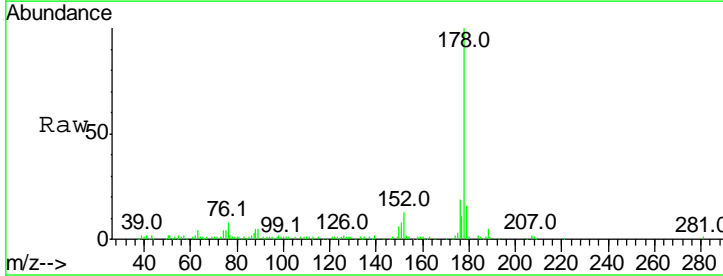
**Manual Integrations**  
**APPROVED**

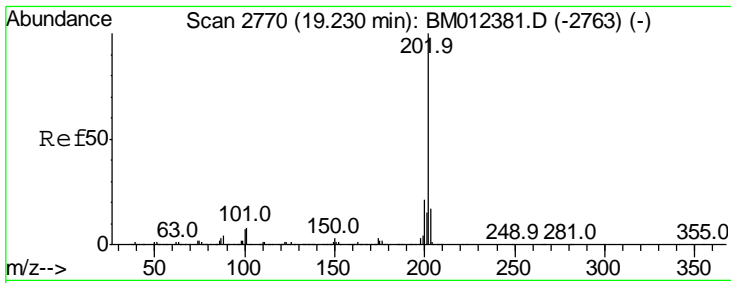
Sohil  
 10/23/2017 4:00:38 PM



#71  
 Anthracene  
 Concen: 1.797 ng/ul  
 RT: 17.21 min Scan# 2426  
 Delta R.T. -0.09 min  
 Lab File: BM012392.D  
 Acq: 22 Oct 2017 11:43

Tgt Ion	Ratio	Lower	Upper
178	100		
179	15.7	12.2	18.4
176	19.1	14.7	22.1



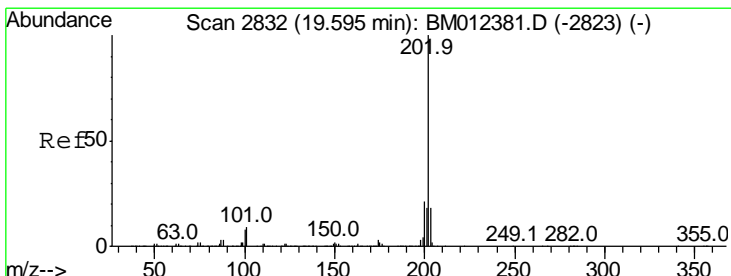
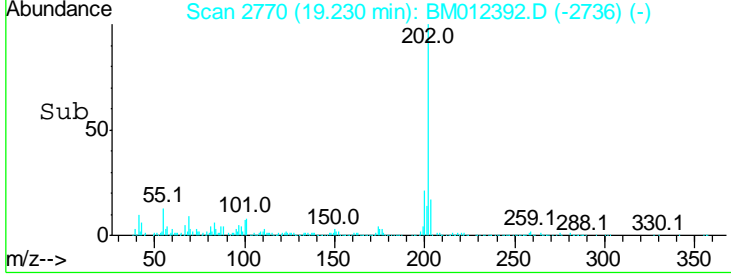
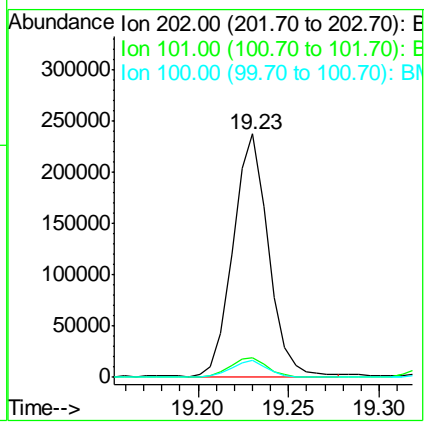
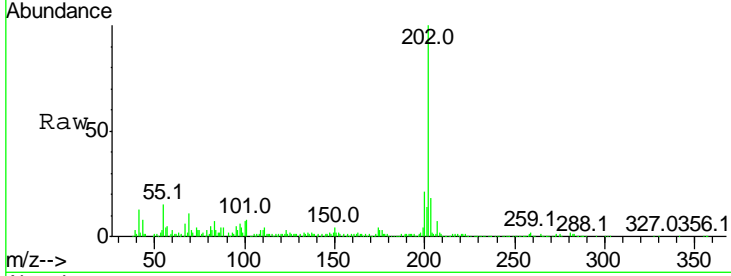


#74  
 Fluoranthene  
 Concen: 3.167 ng/ul  
 RT: 19.23 min Scan# 2770  
 Delta R.T. 0.00 min  
 Lab File: BM012392.D  
 Acq: 22 Oct 2017 11:43

Instrument :  
 BNA\_M  
 ClientSampled :  
 B0CX4

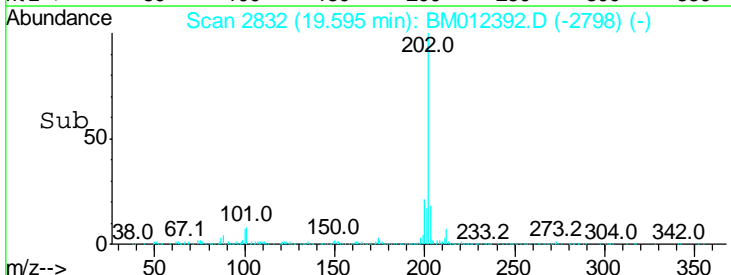
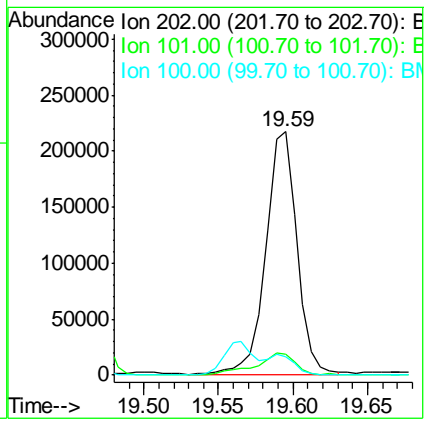
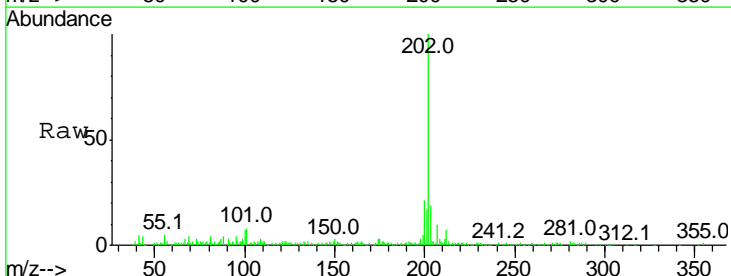
Tgt Ion	Ratio	Lower	Upper
202	100		
101	8.1	5.8	8.6
100	6.8	4.3	6.5#

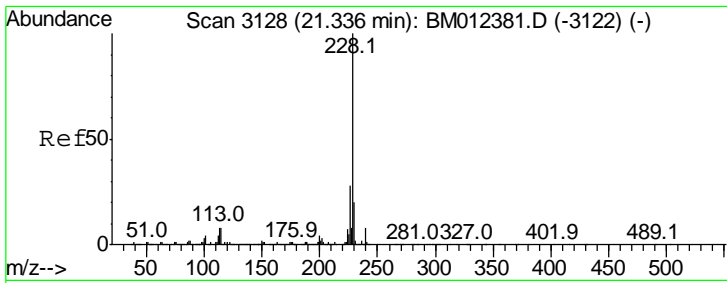
Manual Integrations  
**APPROVED**  
 Sohil  
 10/23/2017 4:00:38 PM



#77  
 Pyrene  
 Concen: 3.549 ng/ul  
 RT: 19.59 min Scan# 2832  
 Delta R.T. 0.00 min  
 Lab File: BM012392.D  
 Acq: 22 Oct 2017 11:43

Tgt Ion	Ratio	Lower	Upper
202	100		
101	8.5	6.5	9.7
100	7.4	5.6	8.4





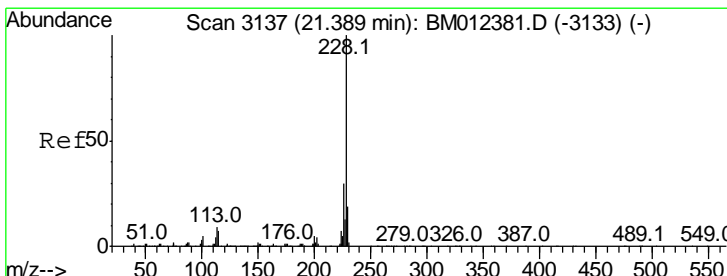
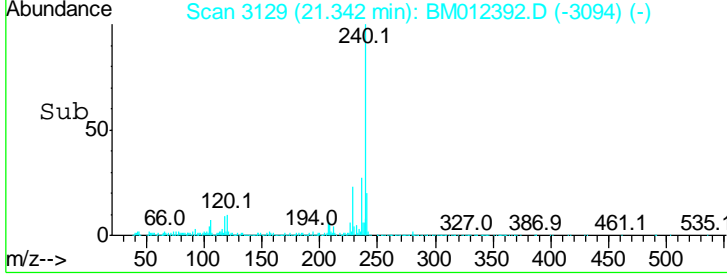
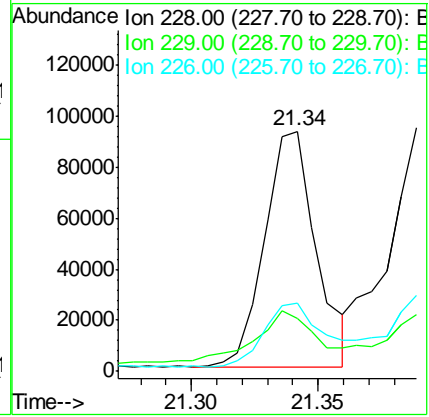
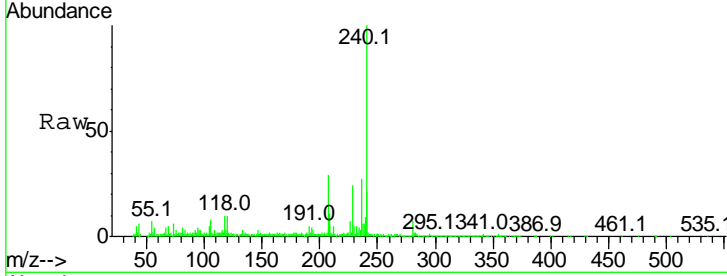
#80  
 Benzo(a)anthracene  
 Concen: 1.520 ng/ul  
 RT: 21.34 min Scan# 3129  
 Delta R.T. 0.01 min  
 Lab File: BM012392.D  
 Acq: 22 Oct 2017 11:43

Instrument :  
 BNA\_M  
 ClientSampled :  
 B0CX4

Tgt Ion	Ratio	Lower	Upper
228	100		
229	22.2	15.8	23.8
226	28.3	21.4	32.2

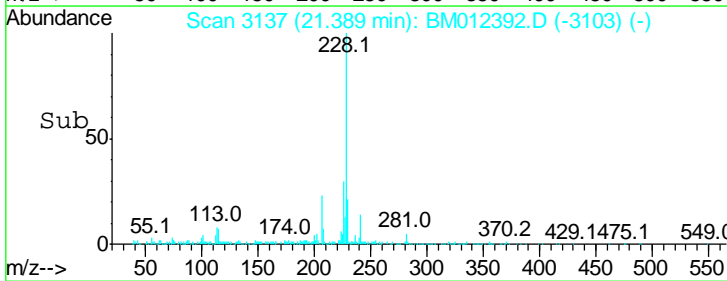
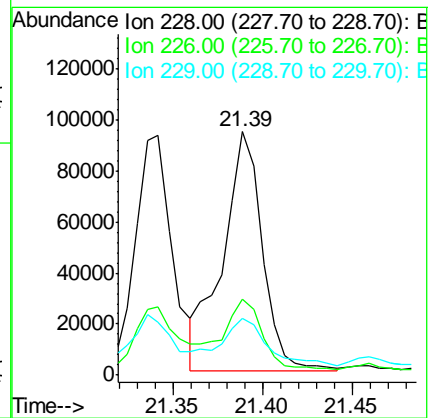
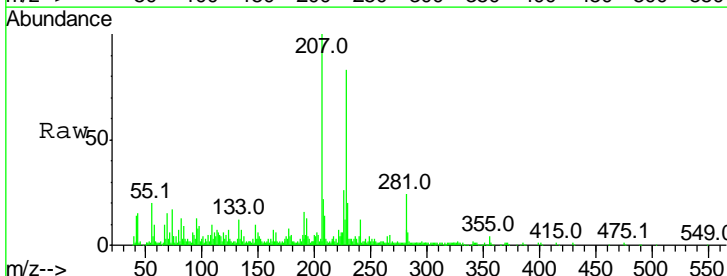
Manual Integrations  
 APPROVED

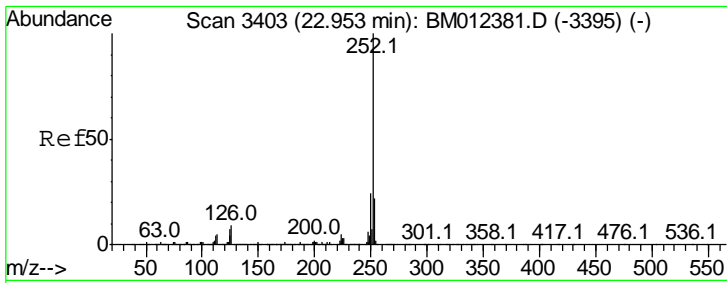
Sohil  
 10/23/2017 4:00:38 PM



#82  
 Chrysene  
 Concen: 1.778 ng/ul m  
 RT: 21.39 min Scan# 3137  
 Delta R.T. 0.00 min  
 Lab File: BM012392.D  
 Acq: 22 Oct 2017 11:43

Tgt Ion	Ratio	Lower	Upper
228	100		
226	31.1	24.0	36.0
229	23.5	15.5	23.3#



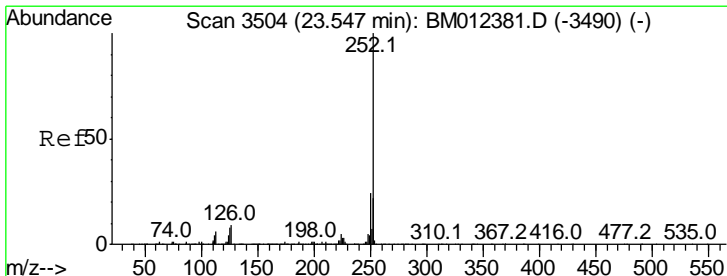
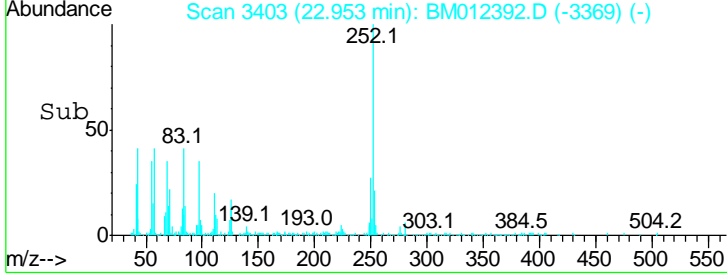
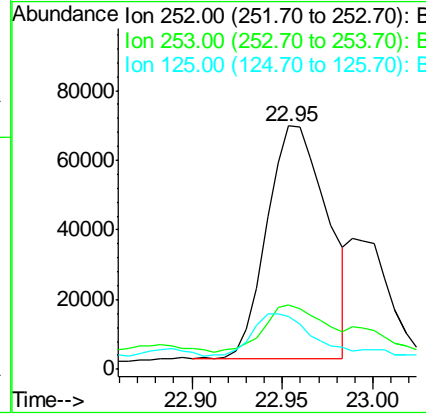
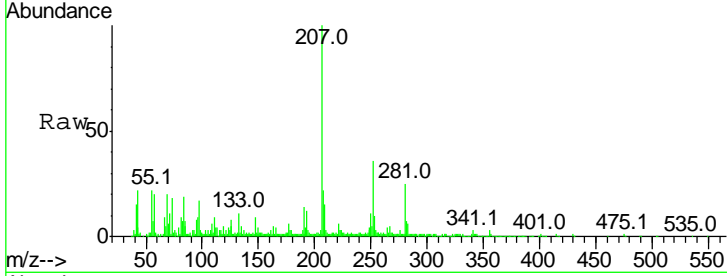


#85  
 Benzo(b)fluoranthene  
 Concen: 2.190 ng/ul  
 RT: 22.95 min Scan# 3403  
 Delta R.T. 0.00 min  
 Lab File: BM012392.D  
 Acq: 22 Oct 2017 11:43

Instrument :  
 BNA\_M  
 ClientSampled :  
 B0CX4

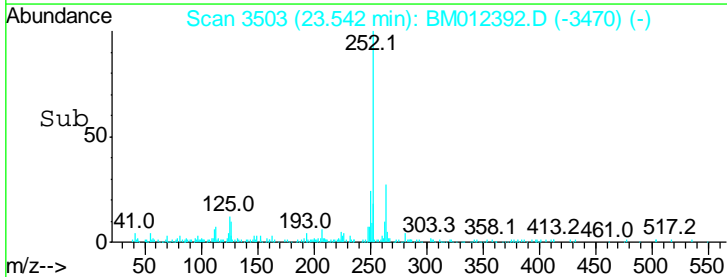
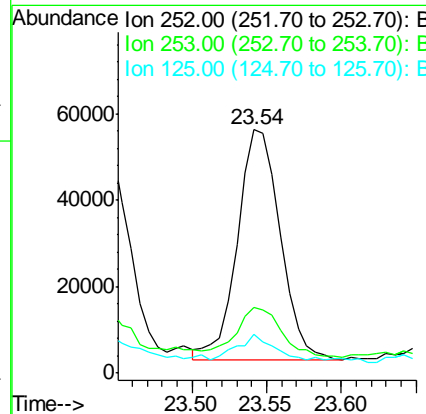
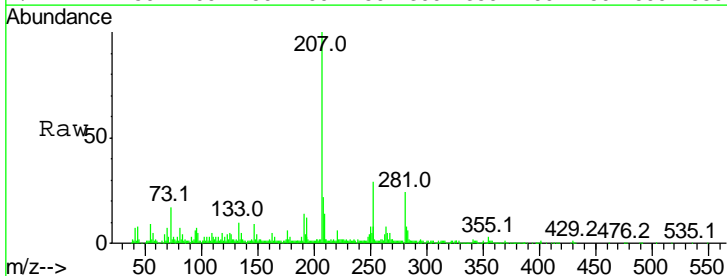
Tgt Ion	Ratio	Lower	Upper
252	100		
253	26.3	17.4	26.2#
125	21.7	5.1	7.7#

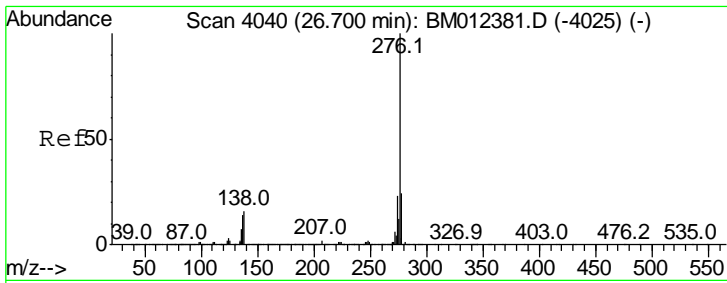
Manual Integrations  
 APPROVED  
 Sohil  
 10/23/2017 4:00:38 PM



#88  
 Benzo(a)pyrene  
 Concen: 1.591 ng/ul  
 RT: 23.54 min Scan# 3503  
 Delta R.T. -0.01 min  
 Lab File: BM012392.D  
 Acq: 22 Oct 2017 11:43

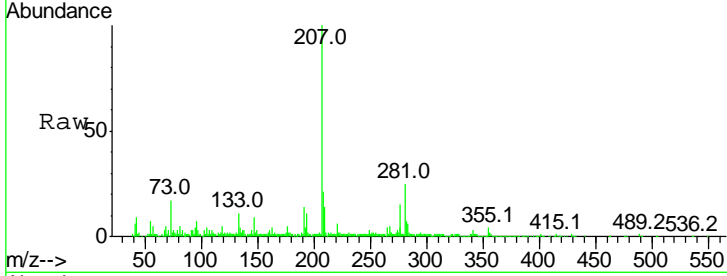
Tgt Ion	Ratio	Lower	Upper
252	100		
253	27.2	17.1	25.7#
125	16.1	5.2	7.8#





#91  
 Benzo(a,h,i)perylene  
 Concen: 1.603 ng/ul  
 RT: 26.71 min Scan# 4041  
 Delta R.T. 0.01 min  
 Lab File: BM012392.D  
 Acq: 22 Oct 2017 11:43

**Instrument :**  
 BNA\_M  
**Client Sampled :**  
 B0CX4



Tot Ion	Resp	Lower	Upper
276	93170		
138	17.1	10.7	16.1#
277	25.4	19.0	28.4

**Manual Integrations**  
**APPROVED**  
 Sohil  
 10/23/2017 4:00:38 PM

