

Data Path : Z:\svoasrv\HPCHEM1\BNA_M\Data\BM102124\
 Data File : BM048171.D
 Acq On : 22 Oct 2024 01:28
 Operator : RC/JU
 Sample : P4380-15
 Misc :
 ALS Vial : 27 Sample Multiplier: 1

Instrument :
 BNA_M
 ClientSampleId :
 E27H8

Manual Integrations
 APPROVED

Reviewed By :Yogesh Patel 10/22/2024
 Supervised By :mohammad ahmed 10/23/2024

Quant Time: Oct 22 01:58:42 2024
 Quant Method : Z:\svoasrv\HPCHEM1\BNA_M\Methods\SFAM-EPA-SIM-BM101824.M
 Quant Title : ASP BNA STANDARDS FOR 5 POINT CALIBRATION
 QLast Update : Mon Oct 21 23:11:55 2024
 Response via : Initial Calibration

Compound	R.T.	QIon	Response	Conc	Units	Dev(Min)
Internal Standards						
1) 1,4-Dichlorobenzene-d4	7.767	152	7685	0.400	ng/ul	-0.03
4) Naphthalene-d8	10.556	136	23820	0.400	ng/ul	-0.03
9) Acenaphthene-d10	14.404	164	12449	0.400	ng/ul	-0.01
13) Phenanthrene-d10	17.144	188	25413m	0.400	ng/ul	-0.03
17) Chrysene-d12	21.316	240	18747m	0.400	ng/ul	-0.02
23) Perylene-d12	23.575	264	17504m	0.400	ng/ul	-0.02
System Monitoring Compounds						
3) 1,4-Dioxane-d8	3.235	96	33117	3.170	ng/ul	0.00
6) 2-Methylnaphthalene-d10	12.156	152	10766	0.324	ng/ul	-0.04
18) Fluoranthene-d10	19.168	212	23756	0.435	ng/ul	-0.02
Target Compounds						
						Qvalue
5) Naphthalene	10.605	128	1427	0.022	ng/ul#	74
11) Acenaphthene	14.464	153	2876	0.070	ng/ul	100
19) Fluoranthene	19.201	202	3647	0.050	ng/ul#	78
20) Pyrene	19.558	202	3685	0.047	ng/ul#	80

(#) = qualifier out of range (m) = manual integration (+) = signals summed

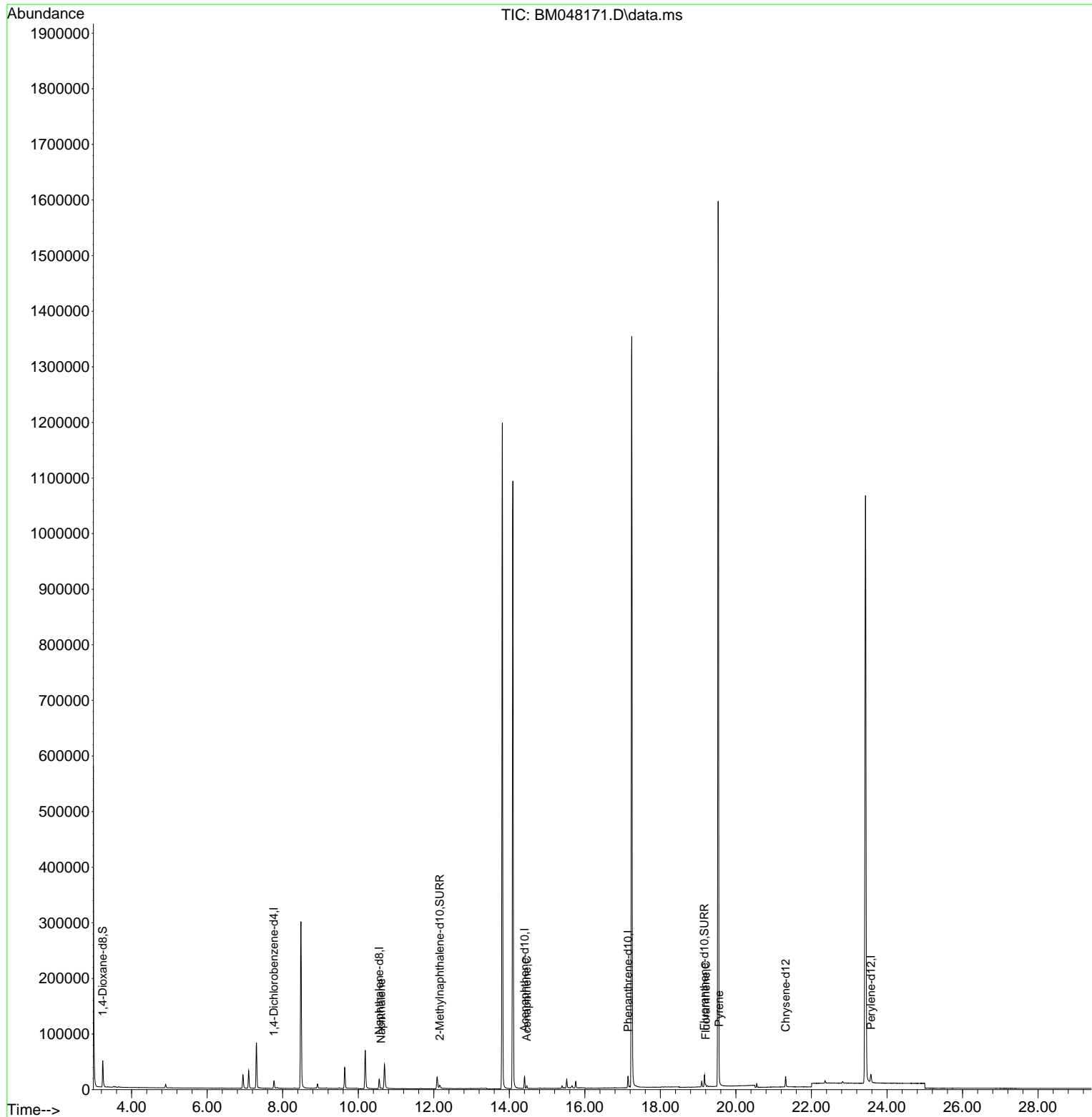
Data Path : Z:\svoasrv\HPCHEM1\BNA_M\Data\BM102124\
 Data File : BM048171.D
 Acq On : 22 Oct 2024 01:28
 Operator : RC/JU
 Sample : P4380-15
 Misc :
 ALS Vial : 27 Sample Multiplier: 1

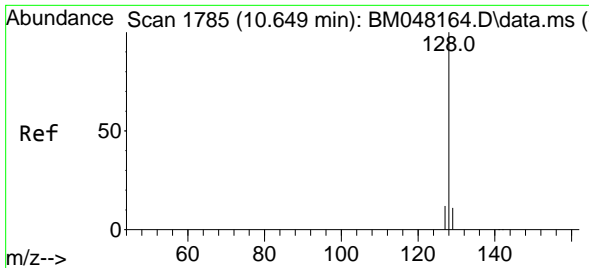
Instrument :
 BNA_M
 ClientSampleId :
 E27H8

Manual Integrations
 APPROVED

Reviewed By :Yogesh Patel 10/22/2024
 Supervised By :mohammad ahmed 10/23/2024

Quant Time: Oct 22 01:58:42 2024
 Quant Method : Z:\svoasrv\HPCHEM1\BNA_M\Methods\SFAM-EPA-SIM-BM101824.M
 Quant Title : ASP BNA STANDARDS FOR 5 POINT CALIBRATION
 QLast Update : Mon Oct 21 23:11:55 2024
 Response via : Initial Calibration





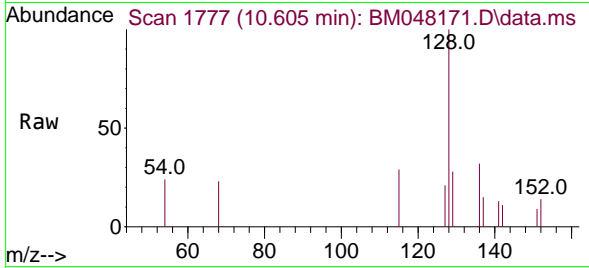
#5
 Naphthalene
 Concen: 0.022 ng/u1
 RT: 10.605 min Scan# 1777
 Delta R.T. -0.033 min
 Lab File: BM048171.D
 Acq: 22 Oct 2024 01:28

Instrument :

BNA_M

ClientSampleId :

E27H8



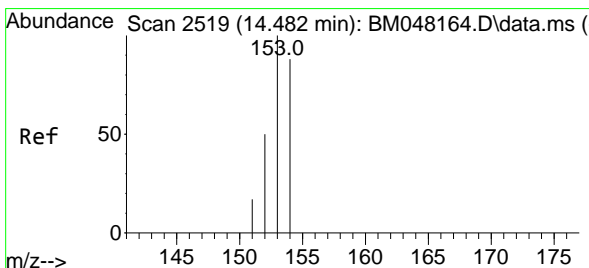
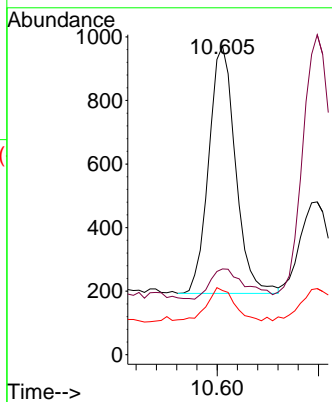
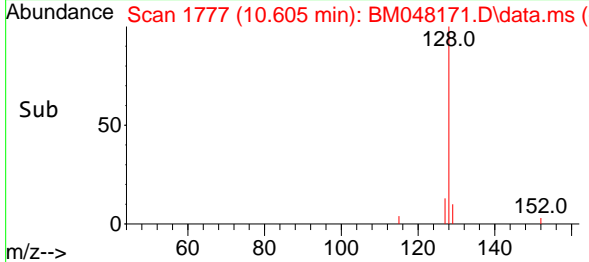
Tgt Ion:128 Resp: 142
 Ion Ratio Lower Upper
 128 100
 129 27.8 10.6 15.8
 127 20.8 11.3 16.9

Manual Integrations

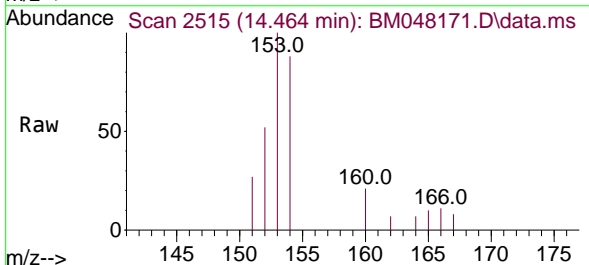
APPROVED

Reviewed By :Yogesh Patel 10/22/2024

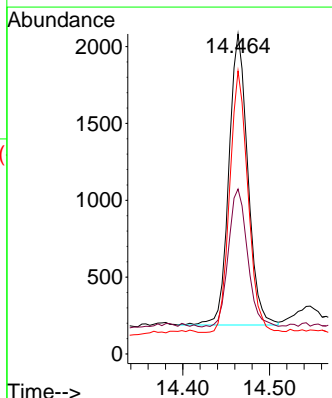
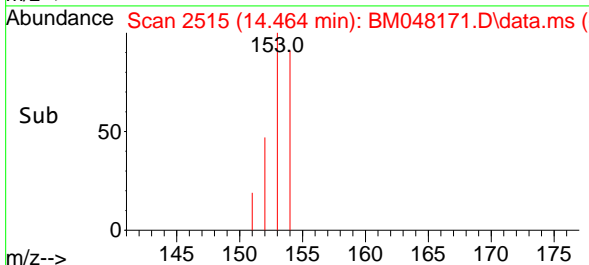
Supervised By :mohammad ahmed 10/23/2024

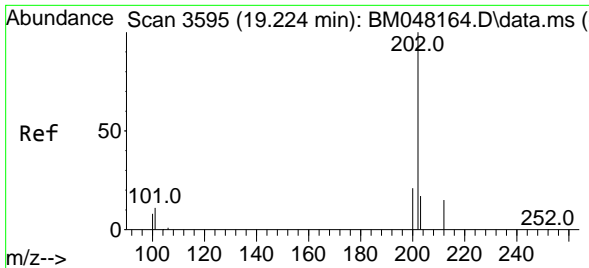


#11
 Acenaphthene
 Concen: 0.070 ng/u1
 RT: 14.464 min Scan# 2515
 Delta R.T. -0.019 min
 Lab File: BM048171.D
 Acq: 22 Oct 2024 01:28



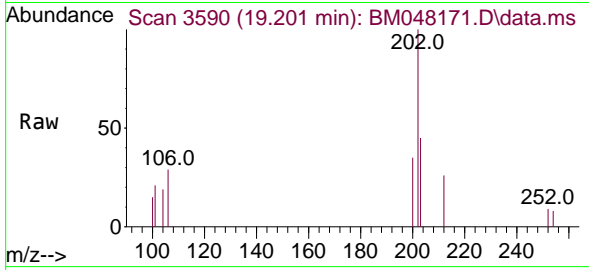
Tgt Ion:153 Resp: 2876
 Ion Ratio Lower Upper
 153 100
 152 51.5 40.9 61.3
 154 88.5 71.0 106.4





#19
 Fluoranthene
 Concen: 0.050 ng/u1
 RT: 19.201 min Scan# 3590
 Delta R.T. -0.019 min
 Lab File: BM048171.D
 Acq: 22 Oct 2024 01:28

Instrument :
 BNA_M
 ClientSampleId :
 E27H8

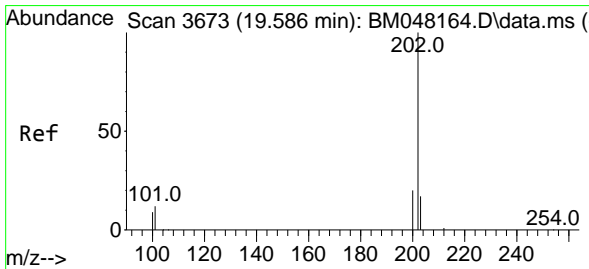
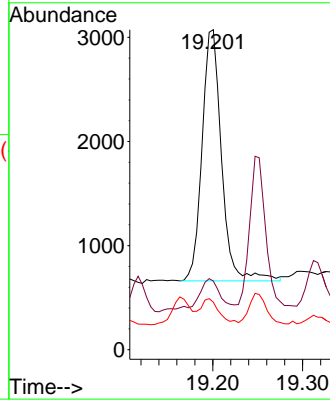
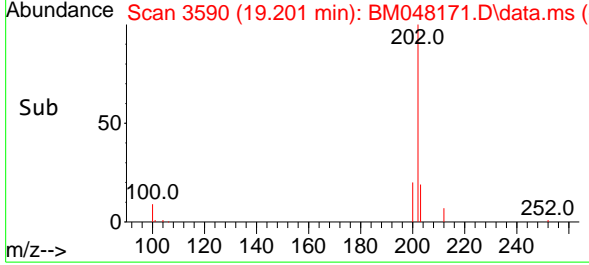


Tgt Ion:202 Resp: 364

Ion	Ratio	Lower	Upper
202	100		
101	21.4	9.3	13.9
100	14.8	7.1	10.7

Manual Integrations
 APPROVED

Reviewed By :Yogesh Patel 10/22/2024
 Supervised By :mohammad ahmed 10/23/2024



#20
 Pyrene
 Concen: 0.047 ng/u1
 RT: 19.558 min Scan# 3667
 Delta R.T. -0.023 min
 Lab File: BM048171.D
 Acq: 22 Oct 2024 01:28

Tgt Ion:202 Resp: 3685

Ion	Ratio	Lower	Upper
202	100		
101	20.4	10.6	16.0#
100	18.7	8.1	12.1#

