

Data Path : Z:\svoasrv\HPCHEM1\BNA\_M\Data\BM102124\  
 Data File : BM048192.D  
 Acq On : 22 Oct 2024 14:45  
 Operator : RC/JU  
 Sample : P4380-12DL 5X  
 Misc :  
 ALS Vial : 49 Sample Multiplier: 1

Instrument :  
 BNA\_M  
 ClientSampleId :  
 E27G9DL

Manual Integrations  
 APPROVED

Reviewed By :Yogesh Patel 10/23/2024  
 Supervised By :mohammad ahmed 10/23/2024

Quant Time: Oct 22 15:21:11 2024  
 Quant Method : Z:\svoasrv\HPCHEM1\BNA\_M\Methods\SFAM-EPA-SIM-BM101824.M  
 Quant Title : ASP BNA STANDARDS FOR 5 POINT CALIBRATION  
 QLast Update : Tue Oct 22 10:58:11 2024  
 Response via : Initial Calibration

Compound	R.T.	QIon	Response	Conc	Units	Dev(Min)
Internal Standards						
1) 1,4-Dichlorobenzene-d4	7.767	152	6090	0.400	ng/ul	-0.03
4) Naphthalene-d8	10.552	136	20181	0.400	ng/ul	-0.03
9) Acenaphthene-d10	14.400	164	11464	0.400	ng/ul	-0.01
13) Phenanthrene-d10	17.141	188	22043	0.400	ng/ul	-0.03
17) Chrysene-d12	21.315	240	17383	0.400	ng/ul	-0.02
23) Perylene-d12	23.572	264	15978m	0.400	ng/ul	-0.02
System Monitoring Compounds						
3) 1,4-Dioxane-d8	3.235	96	7385	0.892	ng/ul	0.00
6) 2-Methylnaphthalene-d10	12.146	152	1786	0.063	ng/ul	-0.05
18) Fluoranthene-d10	19.165	212	3875	0.077	ng/ul	-0.02
Target Compounds						
5) Naphthalene	10.601	128	3934001	71.728	ng/ul	96
7) 2-Methylnaphthalene	12.223	142	96518	3.076	ng/ul	98
8) 1-Methylnaphthalene	12.438	142	66627	1.845	ng/ul	98
10) Acenaphthylene	14.118	152	177324	3.349	ng/ul	97
11) Acenaphthene	14.460	153	35574	0.940	ng/ul	98
12) Fluorene	15.451	166	55277	1.363	ng/ul	97
14) Pentachlorophenol	16.804	266	655	0.088	ng/ul	98
15) Phenanthrene	17.179	178	92679	1.664	ng/ul	99
16) Anthracene	17.272	178	8401m	0.159	ng/ul	
19) Fluoranthene	19.197	202	16508	0.242	ng/ul	99
20) Pyrene	19.555	202	10281	0.140	ng/ul#	94

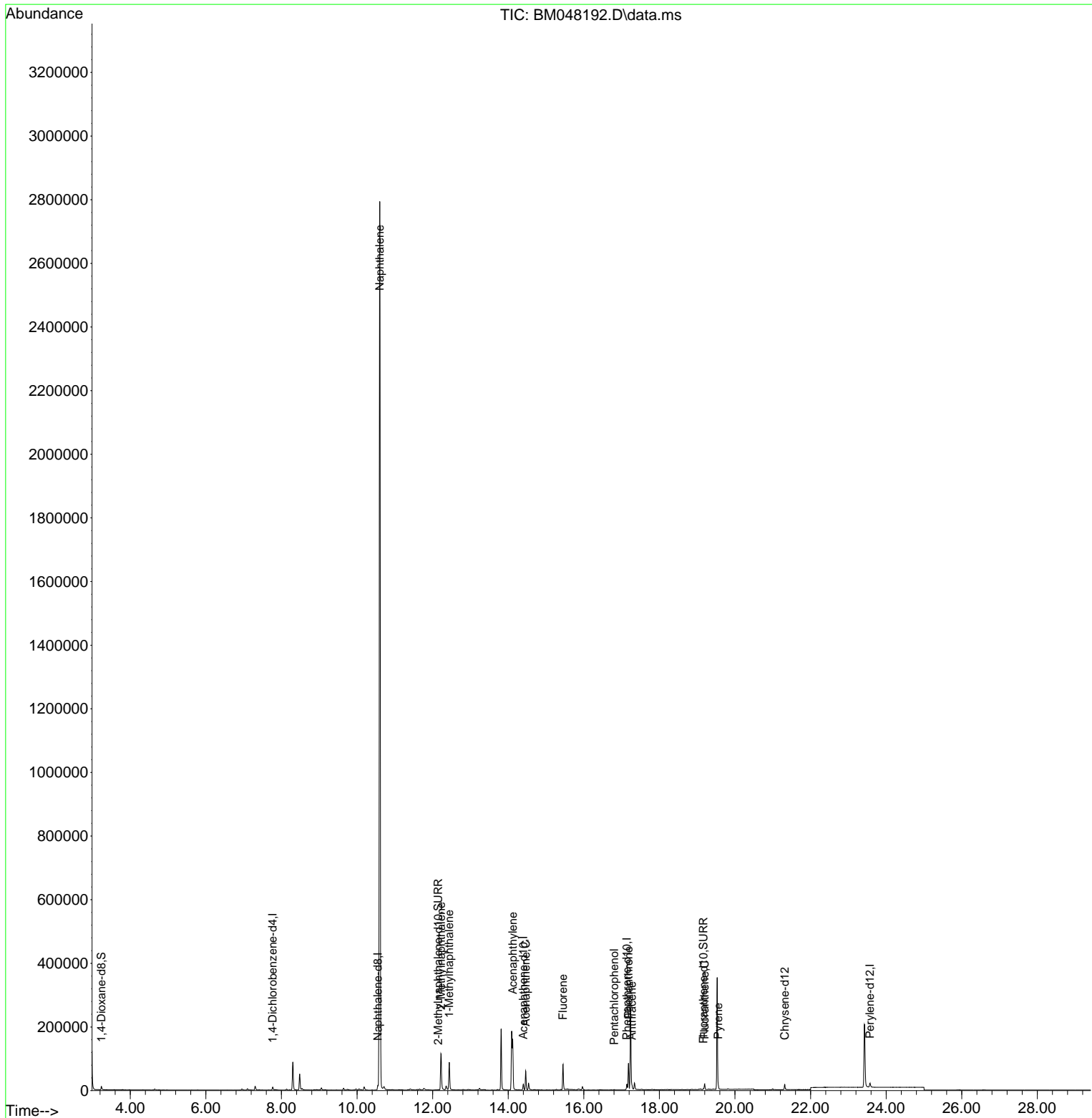
(#) = qualifier out of range (m) = manual integration (+) = signals summed

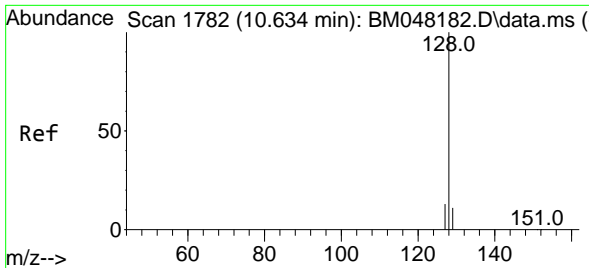
Data Path : Z:\svoasrv\HPCHEM1\BNA\_M\Data\BM102124\  
 Data File : BM048192.D  
 Acq On : 22 Oct 2024 14:45  
 Operator : RC/JU  
 Sample : P4380-12DL 5X  
 Misc :  
 ALS Vial : 49 Sample Multiplier: 1

**Instrument :**  
 BNA\_M  
**ClientSampleId :**  
 E27G9DL

Quant Time: Oct 22 15:21:11 2024  
 Quant Method : Z:\svoasrv\HPCHEM1\BNA\_M\Methods\SFAM-EPA-SIM-BM101824.M  
 Quant Title : ASP BNA STANDARDS FOR 5 POINT CALIBRATION  
 QLast Update : Tue Oct 22 10:58:11 2024  
 Response via : Initial Calibration

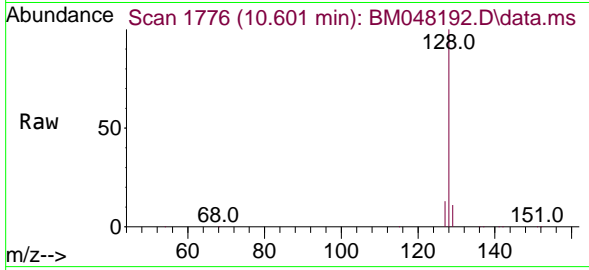
**Manual Integrations**  
**APPROVED**  
 Reviewed By :Yogesh Patel 10/23/2024  
 Supervised By :mohammad ahmed 10/23/2024





#5  
 Naphthalene  
 Concen: 71.728 ng/u1  
 RT: 10.601 min Scan# 1776  
 Delta R.T. -0.033 min  
 Lab File: BM048192.D  
 Acq: 22 Oct 2024 14:45

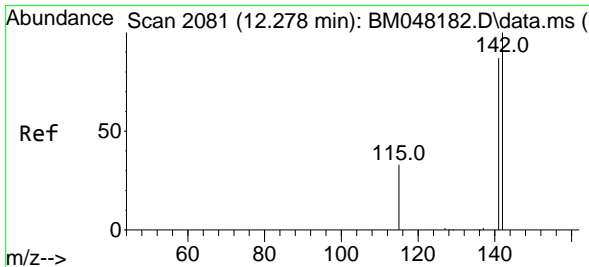
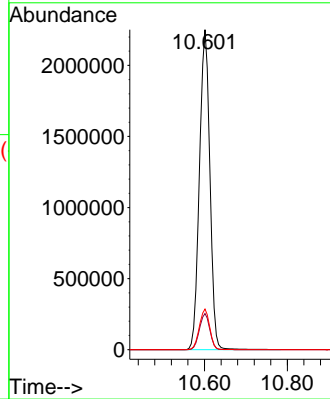
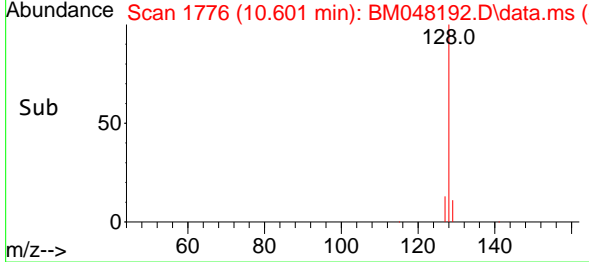
Instrument :  
 BNA\_M  
 ClientSampleId :  
 E27G9DL



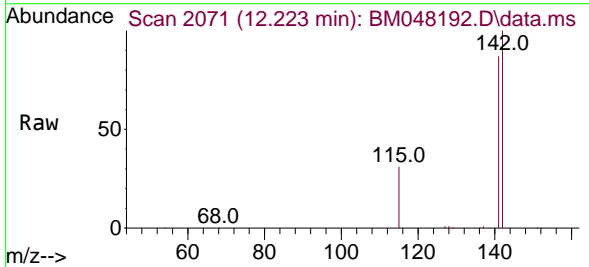
Tgt Ion:128 Resp: 393400  
 Ion Ratio Lower Upper  
 128 100  
 129 11.3 10.6 15.8  
 127 12.7 11.3 16.9

Manual Integrations  
 APPROVED

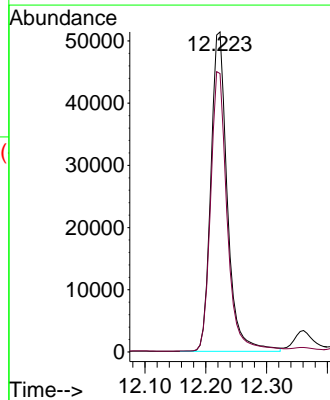
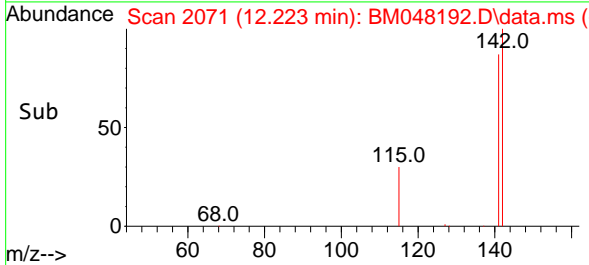
Reviewed By :Yogesh Patel 10/23/2024  
 Supervised By :mohammad ahmed 10/23/2024

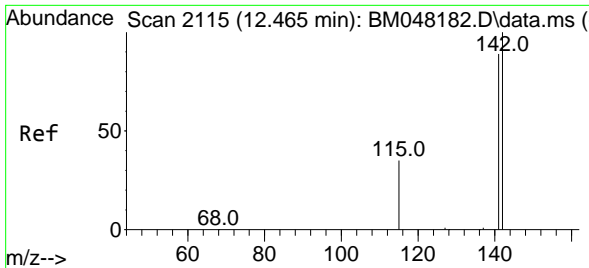


#7  
 2-Methylnaphthalene  
 Concen: 3.076 ng/u1  
 RT: 12.223 min Scan# 2071  
 Delta R.T. -0.055 min  
 Lab File: BM048192.D  
 Acq: 22 Oct 2024 14:45



Tgt Ion:142 Resp: 96518  
 Ion Ratio Lower Upper  
 142 100  
 141 87.9 71.9 107.9





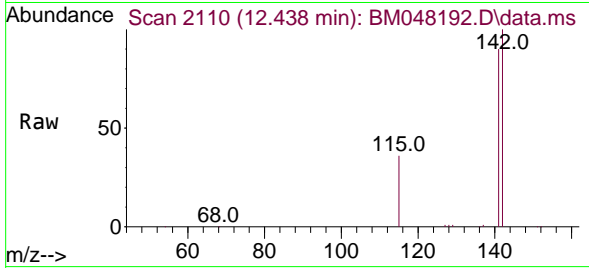
#8  
 1-Methylnaphthalene  
 Concen: 1.845 ng/u1  
 RT: 12.438 min Scan# 2110  
 Delta R.T. -0.027 min  
 Lab File: BM048192.D  
 Acq: 22 Oct 2024 14:45

Instrument :

BNA\_M

ClientSampleId :

E27G9DL



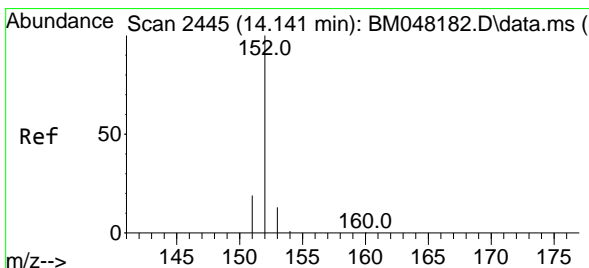
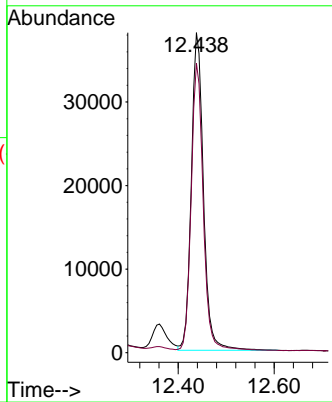
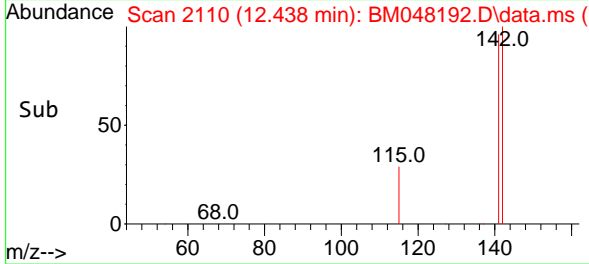
Tgt Ion:142 Resp: 6662  
 Ion Ratio Lower Upper  
 142 100  
 141 90.0 73.8 110.6

Manual Integrations

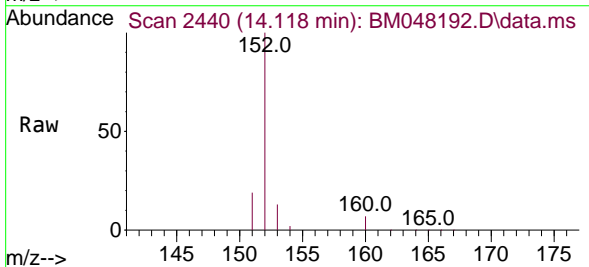
APPROVED

Reviewed By :Yogesh Patel 10/23/2024

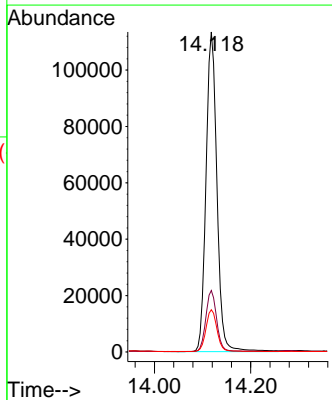
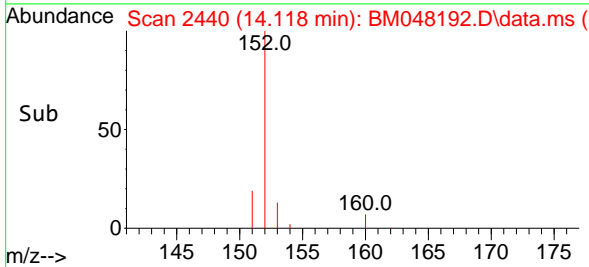
Supervised By :mohammad ahmed 10/23/2024

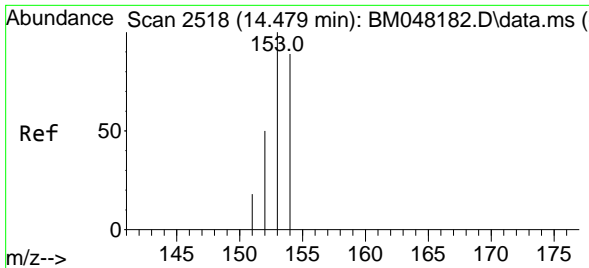


#10  
 Acenaphthylene  
 Concen: 3.349 ng/u1  
 RT: 14.118 min Scan# 2440  
 Delta R.T. -0.023 min  
 Lab File: BM048192.D  
 Acq: 22 Oct 2024 14:45



Tgt Ion:152 Resp: 177324  
 Ion Ratio Lower Upper  
 152 100  
 151 19.2 16.2 24.4  
 153 13.2 11.7 17.5





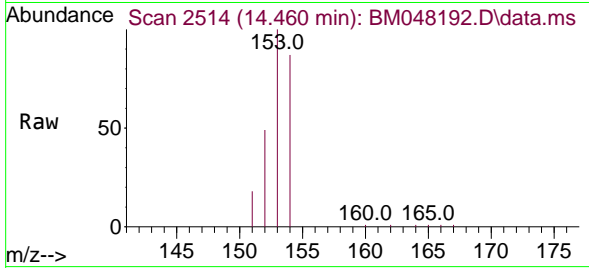
#11  
 Acenaphthene  
 Concen: 0.940 ng/u1  
 RT: 14.460 min Scan# 21  
 Delta R.T. -0.018 min  
 Lab File: BM048192.D  
 Acq: 22 Oct 2024 14:45

Instrument :

BNA\_M

ClientSampleId :

E27G9DL



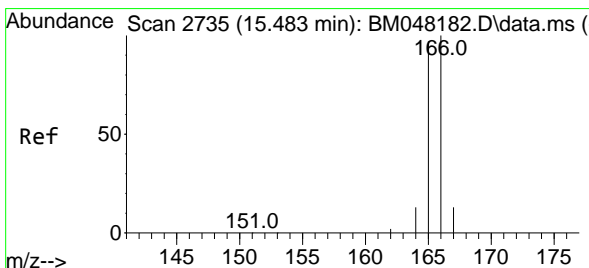
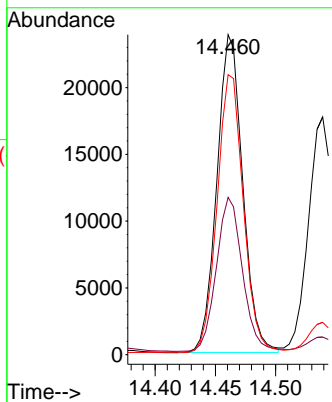
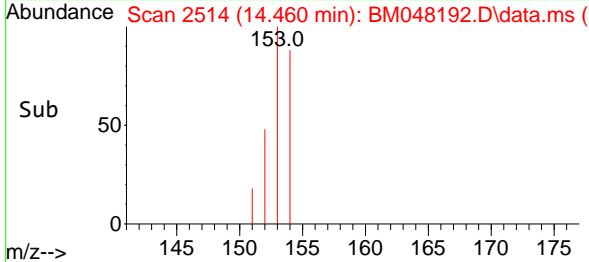
Tgt Ion:153 Resp: 35574  
 Ion Ratio Lower Upper  
 153 100  
 152 49.2 40.9 61.3  
 154 87.5 71.0 106.4

Manual Integrations

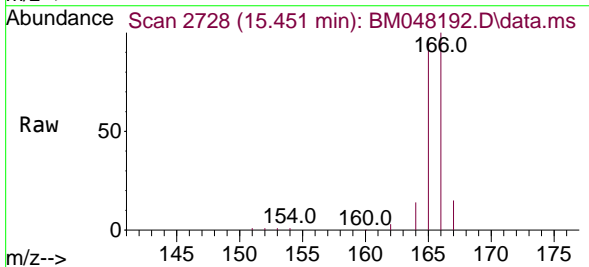
APPROVED

Reviewed By :Yogesh Patel 10/23/2024

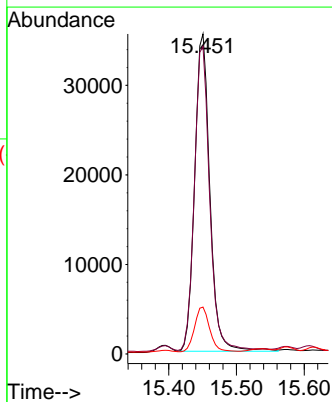
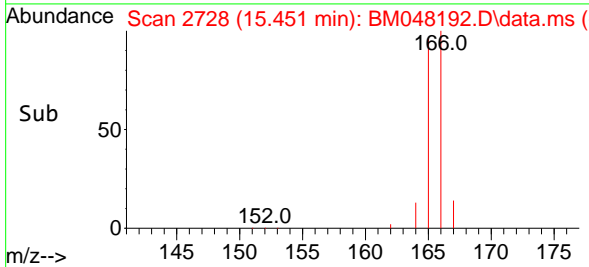
Supervised By :mohammad ahmed 10/23/2024

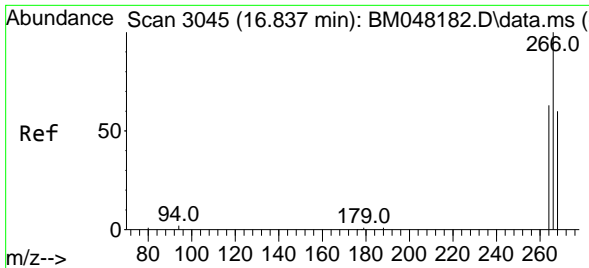


#12  
 Fluorene  
 Concen: 1.363 ng/u1  
 RT: 15.451 min Scan# 2728  
 Delta R.T. -0.032 min  
 Lab File: BM048192.D  
 Acq: 22 Oct 2024 14:45



Tgt Ion:166 Resp: 55277  
 Ion Ratio Lower Upper  
 166 100  
 165 96.1 79.1 118.7  
 167 14.7 12.0 18.0





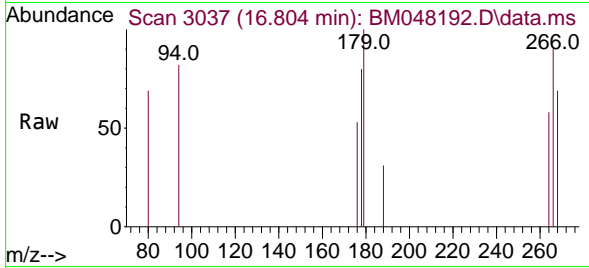
#14  
 Pentachlorophenol  
 Concen: 0.088 ng/u1  
 RT: 16.804 min Scan# 3045  
 Delta R.T. -0.034 min  
 Lab File: BM048192.D  
 Acq: 22 Oct 2024 14:45

Instrument :

BNA\_M

ClientSampleId :

E27G9DL



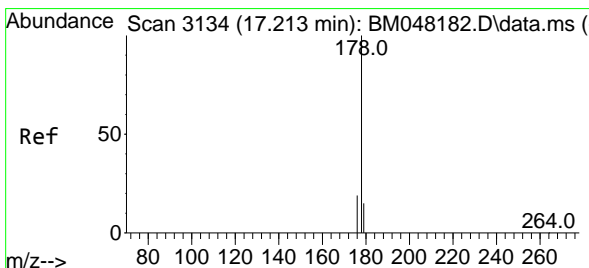
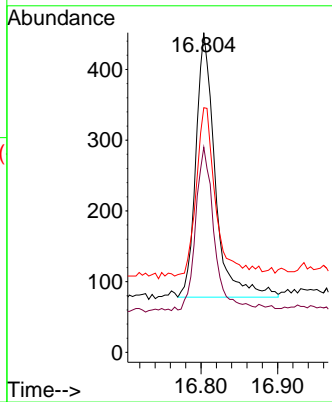
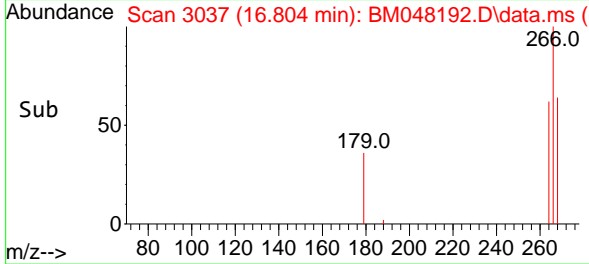
Tgt Ion:266 Resp: 65.2

Ion	Ratio	Lower	Upper
266	100		
264	59.4	50.2	75.2
268	65.2	51.8	77.6

Manual Integrations

APPROVED

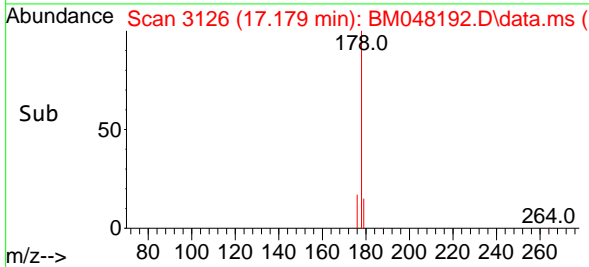
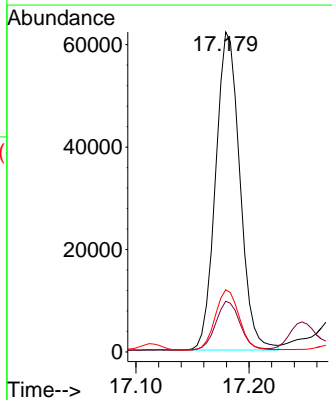
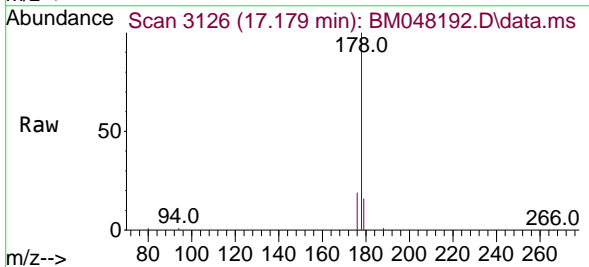
Reviewed By :Yogesh Patel 10/23/2024  
 Supervised By :mohammad ahmed 10/23/2024

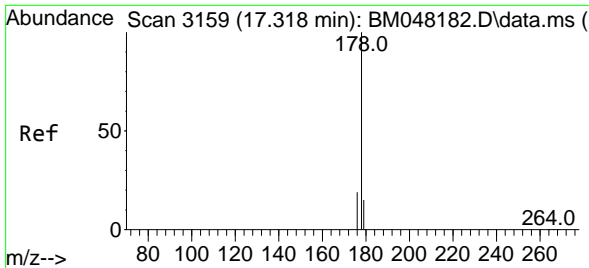


#15  
 Phenanthrene  
 Concen: 1.664 ng/u1  
 RT: 17.179 min Scan# 3126  
 Delta R.T. -0.034 min  
 Lab File: BM048192.D  
 Acq: 22 Oct 2024 14:45

Tgt Ion:178 Resp: 92679

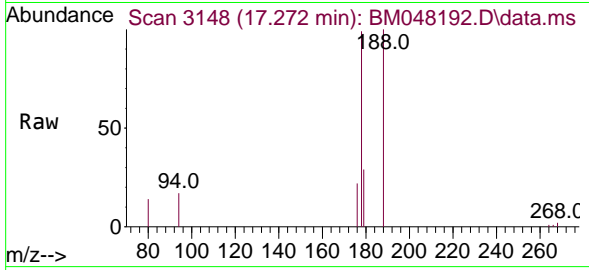
Ion	Ratio	Lower	Upper
178	100		
179	15.9	13.2	19.8
176	19.5	16.0	24.0





#16  
 Anthracene  
 Concen: 0.159 ng/ul m  
 RT: 17.272 min Scan# 3159  
 Delta R.T. -0.046 min  
 Lab File: BM048192.D  
 Acq: 22 Oct 2024 14:45

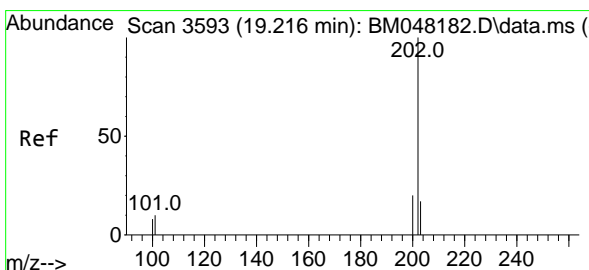
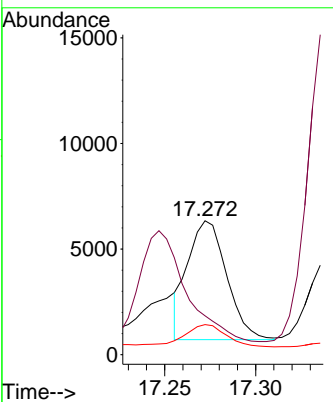
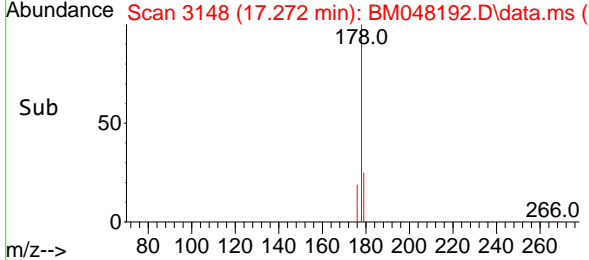
Instrument : BNA\_M  
 ClientSampleId : E27G9DL



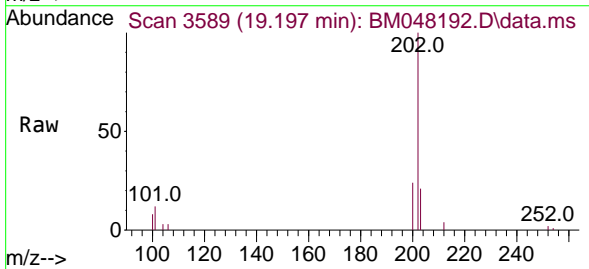
Tgt Ion:178 Resp: 8400

Ion	Ratio	Lower	Upper
178	100		
179	29.1	14.5	21.7
176	22.5	16.0	24.0

Manual Integrations  
**APPROVED**  
 Reviewed By :Yogesh Patel 10/23/2024  
 Supervised By :mohammad ahmed 10/23/2024

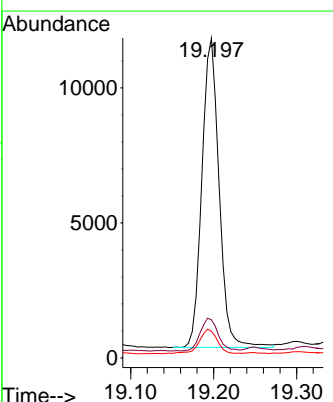
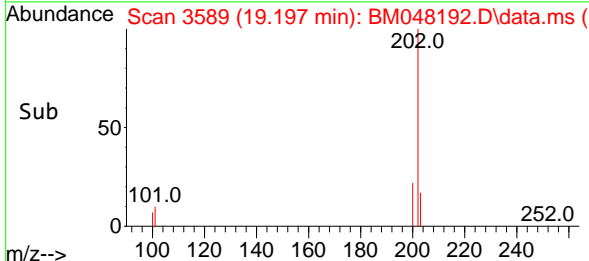


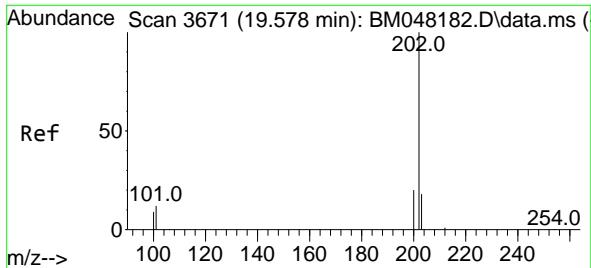
#19  
 Fluoranthene  
 Concen: 0.242 ng/ul  
 RT: 19.197 min Scan# 3589  
 Delta R.T. -0.018 min  
 Lab File: BM048192.D  
 Acq: 22 Oct 2024 14:45



Tgt Ion:202 Resp: 16508

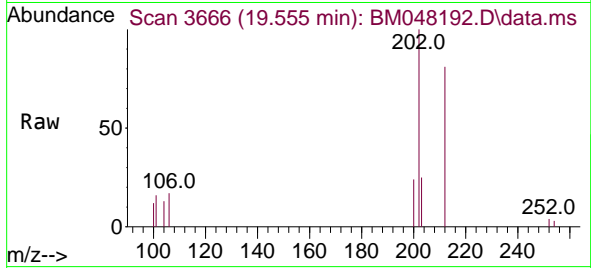
Ion	Ratio	Lower	Upper
202	100		
101	11.9	9.3	13.9
100	8.3	7.1	10.7





#20  
 Pyrene  
 Concen: 0.140 ng/ul  
 RT: 19.555 min Scan# 30  
 Delta R.T. -0.023 min  
 Lab File: BM048192.D  
 Acq: 22 Oct 2024 14:45

Instrument :  
 BNA\_M  
 ClientSampleId :  
 E27G9DL



Tgt Ion:202 Resp: 1028  
 Ion Ratio Lower Upper  
 202 100  
 101 15.8 10.6 16.0  
 100 12.1 8.1 12.1

Manual Integrations  
 APPROVED

Reviewed By :Yogesh Patel 10/23/2024  
 Supervised By :mohammad ahmed 10/23/2024

