

Data Path : Z:\HPCHEM1\BNA M\DATA\BM102517\
 Data File : BM012443.D
 Acq On : 25 Oct 2017 13:40
 Operator : SJ/JU
 Sample : I5695-04RE
 Misc :
 ALS Vial : 7 Sample Multiplier: 1

Instrument :
 BNA_M
 ClientSampleId :

Quant Time: Oct 26 01:11:54 2017
 Quant Method : Z:\HPCHEM1\BNA M\METHODS\SOM-EPA-BM102417.M
 Quant Title : SVOA CALIBRATION
 QLast Update : Thu Oct 26 01:09:36 2017
 Response via : Initial Calibration

Internal Standards	R.T.	QIon	Response	Conc	Units	Dev(Min)
1) 1,4-Dichlorobenzene-d4	7.90	152	777827	20.00	ng/ul	0.03
18) Naphthalene-d8	10.69	136	2781541	20.00	ng/ul	0.02
35) Acenaphthene-d10	14.52	164	1710473	20.00	ng/ul	0.01
61) Phenanthrene-d10	17.26	188	3933821	20.00	ng/ul	0.01
75) Chrysene-d12	21.42	240	3322961	20.00	ng/ul	0.00
83) Perylene-d12	23.73	264	2881075	20.00	ng/ul	0.02

System Monitoring Compounds

3) 1,4-Dioxane-d8	3.36	96	52872	3.47	ng/uL	0.00
5) Phenol-d5	7.06	99	1342963	20.67	ng/ul	0.01
7) Bis-(2-Chloroethyl)ether-d	7.20	67	2490835	64.57	ng/ul	0.00
9) 2-Chlorophenol-d4	7.43	132	1074111	22.07	ng/ul	0.02
13) 4-Methylphenol-d8	8.60	113	1164789	20.97	ng/ul	0.02
19) Nitrobenzene-d5	9.05	128	1141616	65.53	ng/ul	0.02
22) 2-Nitrophenol-d4	9.77	143	621512	34.63	ng/ul	0.02
26) 2,4-Dichlorophenol-d3	10.32	165	1073208	22.58	ng/ul	0.02
29) 4-Chloroaniline-d4	10.81	131	4284653	85.47	ng/ul	0.01
43) Dimethylphthalate-d6	13.92	166	3839847	25.70	ng/ul	0.00
46) Acenaphthylene-d8	14.21	160	4852077	27.45	ng/ul	0.01
51) 4-Nitrophenol-d4	14.72	143	439344	19.78	ng/ul	0.02
57) Fluorene-d10	15.50	176	3373375	26.67	ng/ul	0.00
62) 4,6-Dinitro-2-methylphenol	15.62	200	188024	9.88	ng/ul	0.01
70) Anthracene-d10	17.35	188	5080205	27.10	ng/ul	0.00
76) Pyrene-d10	19.64	212	5455098	35.78	ng/ul	0.01
87) Benzo(a)pyrene-d12	23.59	264	3553825	25.96	ng/ul	0.02

Target Compounds

Target Compounds	R.T.	QIon	Response	Conc	Units	Ovalue
4) Benzaldehyde	7.07	77	1710516	48.41	ng/ul#	16
6) Phenol	7.08	94	386507	5.71	ng/ul#	1
8) Bis(2-Chloroethyl)ether	7.30	93	321034	6.45	ng/ul#	1
14) Acetophenone	8.73	105	550878	6.31	ng/ul#	91
15) N-Nitroso-di-n-propylamine	8.70	70	596632	12.53	ng/ul#	52
17) Hexachloroethane	9.03	117	9344339	442.75	ng/ul#	1
20) Nitrobenzene	9.13	77	2984656	59.48	ng/ul#	40
21) Isophorone	9.65	82	4230896	39.84	ng/ul#	1
23) 2-Nitrophenol	9.85	139	300301	15.06	ng/ul#	1
24) 2,4-Dimethylphenol	9.93	107	1465095	26.11	ng/ul#	74
25) Bis(2-Chloroethoxy)methane	10.12	93	421125	7.06	ng/ul#	1
27) 2,4-Dichlorophenol	10.32	162	134429	2.90	ng/ul#	65
28) Naphthalene	10.75	128	554324	4.02	ng/ul#	1
30) 4-Chloroaniline	10.87	127	129019	2.56	ng/ul#	30
32) Caprolactam	11.61	113	24812	1.65	ng/ul#	1
33) 4-Chloro-3-methylphenol	11.98	107	83376	1.60	ng/ul#	27
44) Dimethylphthalate	13.97	163	2534680	17.15	ng/ul#	98
45) 2,6-Dinitrotoluene	14.07	165	41741	1.78	ng/ul#	68
48) 3-Nitroaniline	14.43	138	53054	2.41	ng/ul#	19
49) Acenaphthene	14.58	153	171667	1.49	ng/ul#	86
54) 2,4-Dinitrotoluene	14.87	165	43219	1.23	ng/ul#	56
64) N-Nitrosodiphenylamine	15.77	169	435695	3.81	ng/ul#	45
69) Phenanthrene	17.30	178	259408	1.22	ng/ul#	81

Data Path : Z:\HPCHEM1\BNA M\DATA\BM102517\
Data File : BM012443.D
Acq On : 25 Oct 2017 13:40
Operator : SJ/JU
Sample : I5695-04RE
Misc :
ALS Vial : 7 Sample Multiplier: 1

Instrument :
BNA_M
ClientSampleId :

Quant Time: Oct 26 01:11:54 2017
Quant Method : Z:\HPCHEM1\BNA M\METHODS\SOM-EPA-BM102417.M
Quant Title : SVOA CALIBRATION
QLast Update : Thu Oct 26 01:09:36 2017
Response via : Initial Calibration

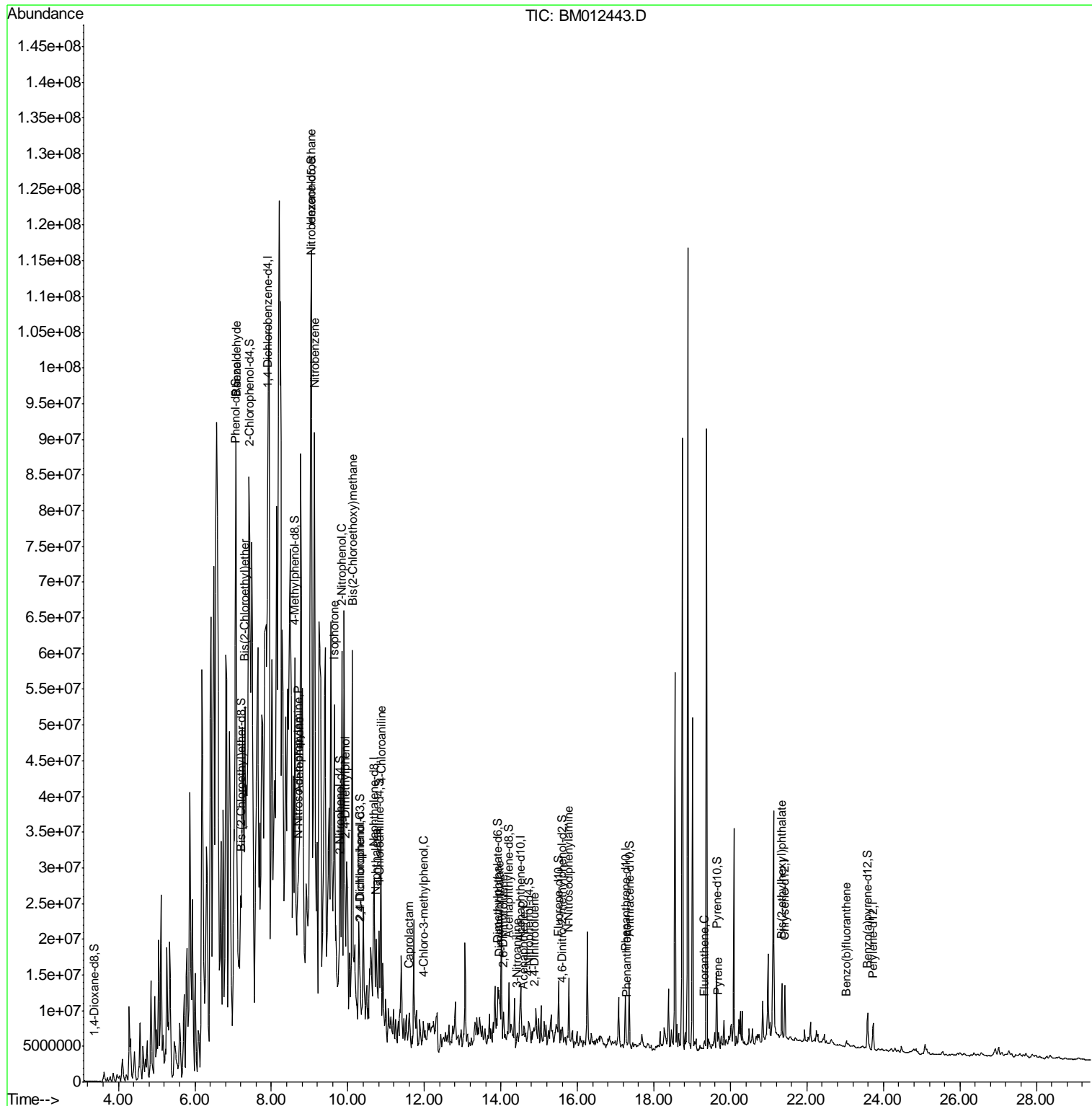
Internal Standards	R.T.	QIon	Response	Conc	Units	Dev(Min)
74) Fluoranthene	19.31	202	242970	1.01	ng/ul#	84
77) Pyrene	19.67	202	250445	1.33	ng/ul#	90
81) Bis(2-ethylhexyl)phthalate	21.34	149	2607078	23.02	ng/ul	99
85) Benzo(b)fluoranthene	23.03	252	231269	1.30	ng/ul#	61

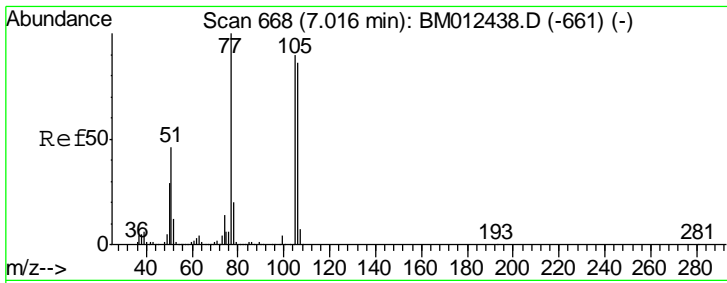
(#) = qualifier out of range (m) = manual integration (+) = signals summed

Data Path : Z:\HPCHEM1\BNA M\DATA\BM102517\
 Data File : BM012443.D
 Acq On : 25 Oct 2017 13:40
 Operator : SJ/JU
 Sample : I5695-04RE
 Misc :
 ALS Vial : 7 Sample Multiplier: 1

Instrument :
 BNA_M
 ClientSampled :

Quant Time: Oct 26 01:11:54 2017
 Quant Method : Z:\HPCHEM1\BNA M\METHODS\SOM-EPA-BM102417.M
 Quant Title : SVOA CALIBRATION
 QLast Update : Thu Oct 26 01:09:36 2017
 Response via : Initial Calibration

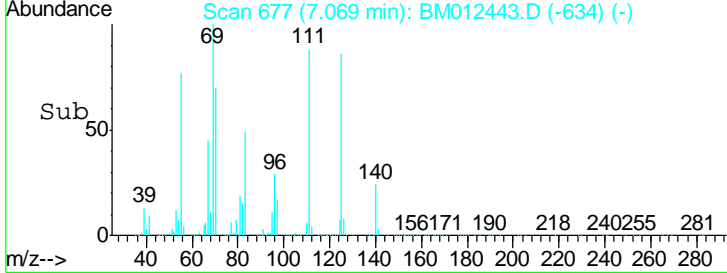
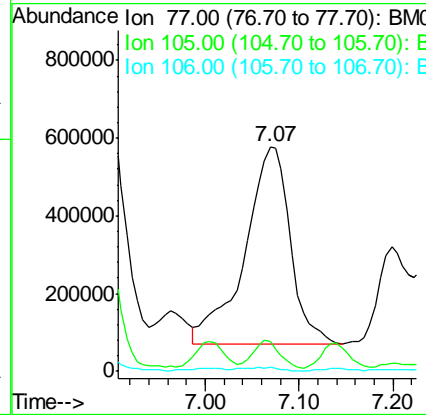
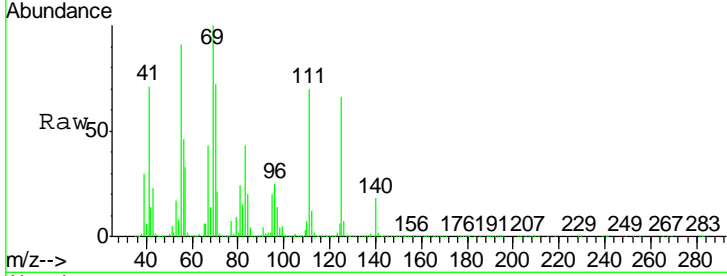




#4
Benzaldehyde
Concen: 48.41 ng/ul
RT: 7.07 min Scan# 677
Delta R.T. 0.05 min
Lab File: BM012443.D
Acq: 25 Oct 2017 13:40

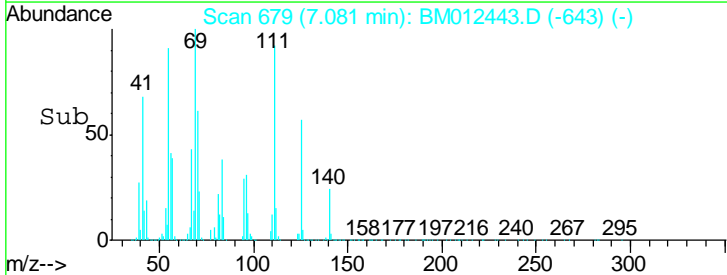
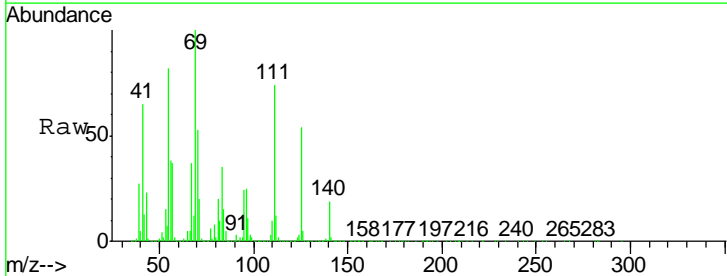
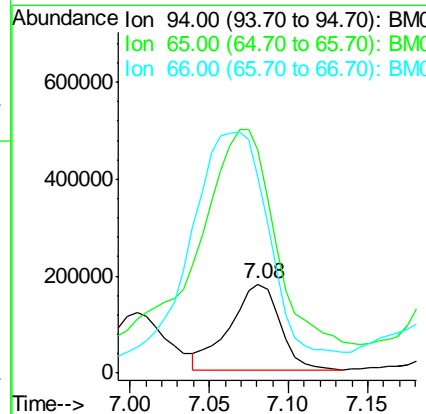
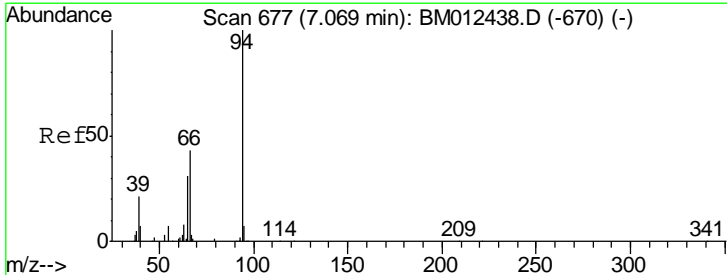
Instrument :
BNA_M
ClientSampled :

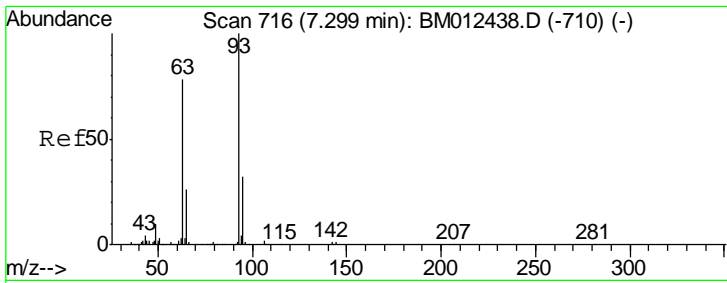
Tgt Ion	Resp	Lower	Upper
77	1710516		
105	13.1	66.1	99.1#
106	1.7	67.8	101.6#



#6
Phenol
Concen: 5.71 ng/ul
RT: 7.08 min Scan# 679
Delta R.T. 0.01 min
Lab File: BM012443.D
Acq: 25 Oct 2017 13:40

Tgt Ion	Resp	Lower	Upper
94	386507		
65	250.1	28.2	42.4#
66	220.9	47.2	70.8#

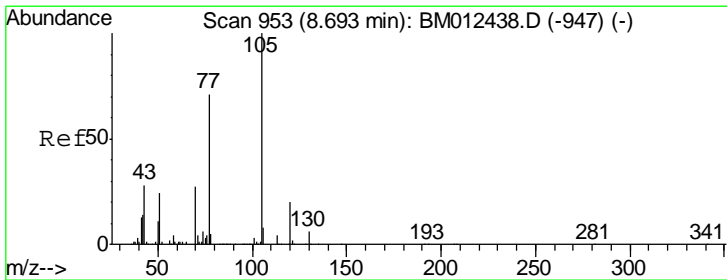
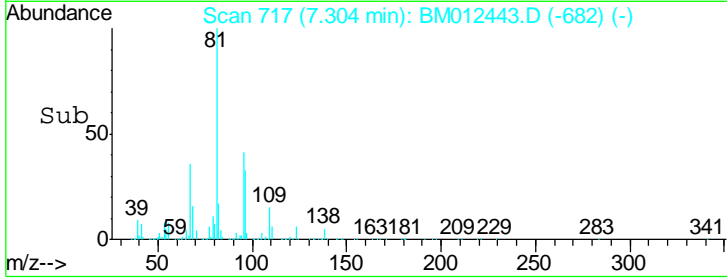
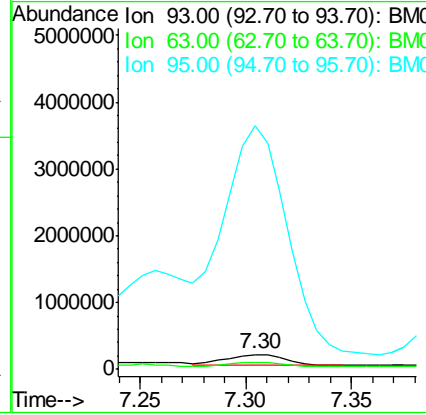
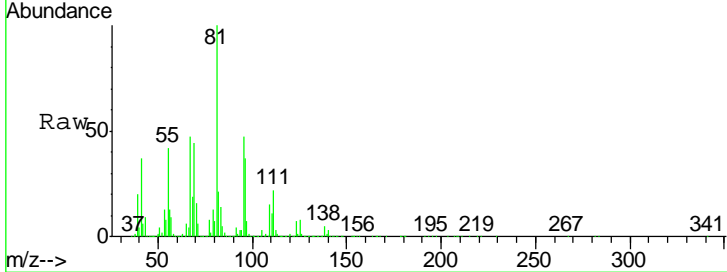




#8
 Bis(2-Chloroethyl)ether
 Concen: 6.45 ng/ul
 RT: 7.30 min Scan# 717
 Delta R.T. 0.01 min
 Lab File: BM012443.D
 Acq: 25 Oct 2017 13:40

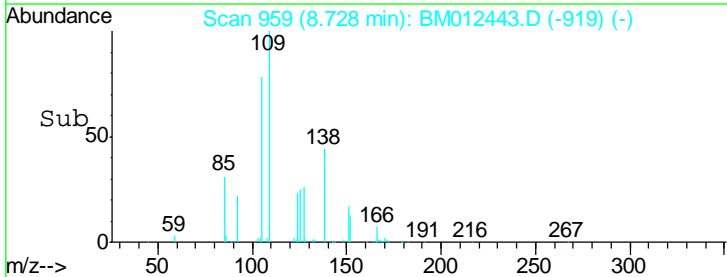
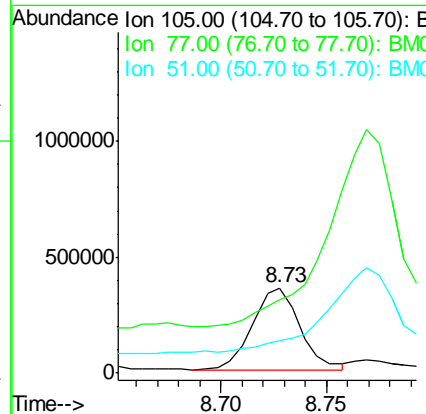
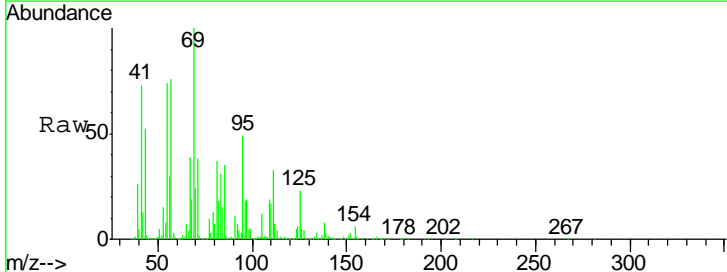
Instrument :
 BNA_M
 ClientSampled :

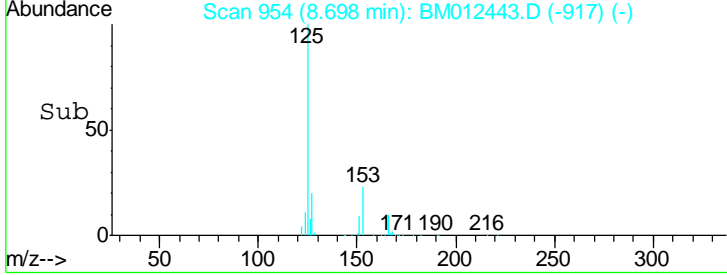
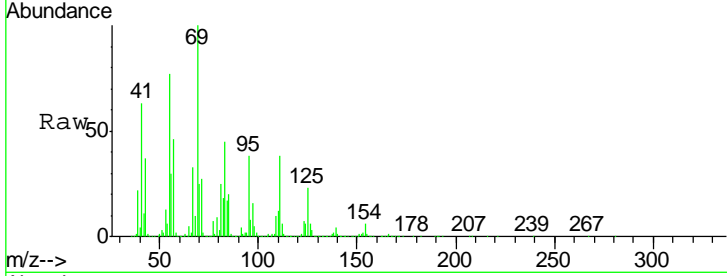
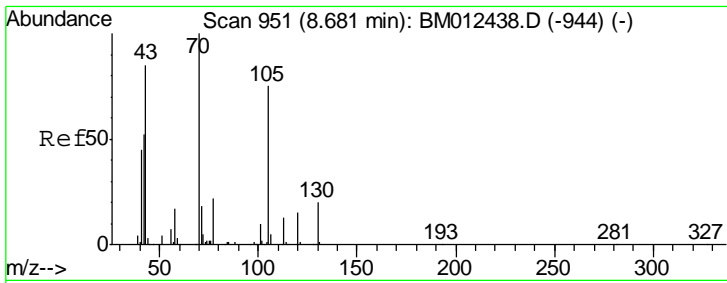
Tgt Ion	Resp	Lower	Upper
93	321034		
63	45.3	57.3	85.9#
95	1643.2	26.6	39.8#



#14
 Acetophenone
 Concen: 6.31 ng/ul
 RT: 8.73 min Scan# 959
 Delta R.T. 0.03 min
 Lab File: BM012443.D
 Acq: 25 Oct 2017 13:40

Tgt Ion	Resp	Lower	Upper
105	550878		
77	86.3	74.2	111.4
51	38.3	23.4	35.2#

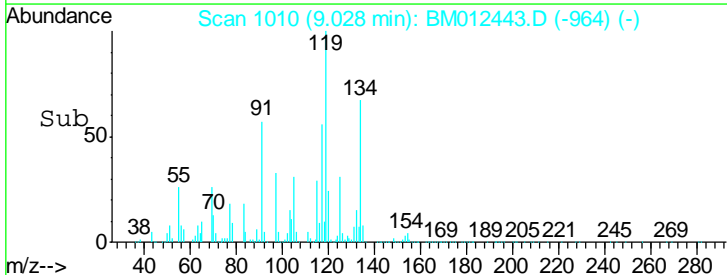
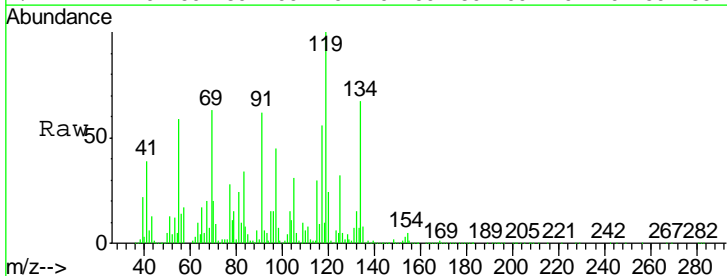
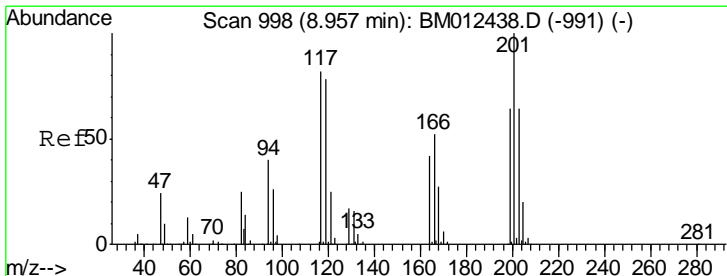
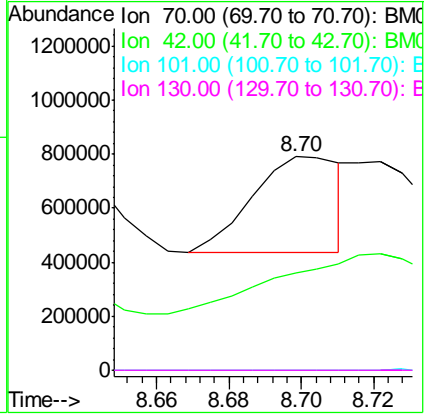




#15
 N-Nitroso-di-n-propylamine
 Concen: 12.53 ng/ul
 RT: 8.70 min Scan# 954
 Delta R.T. 0.02 min
 Lab File: BM012443.D
 Acq: 25 Oct 2017 13:40

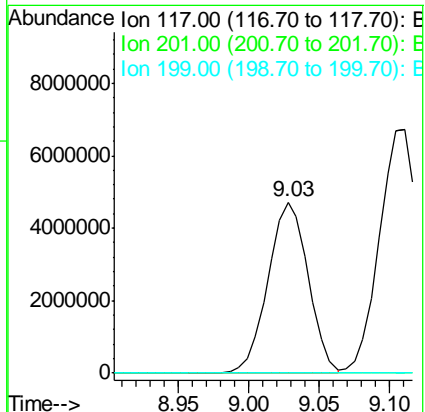
Instrument :
 BNA_M
 ClientSampleID :

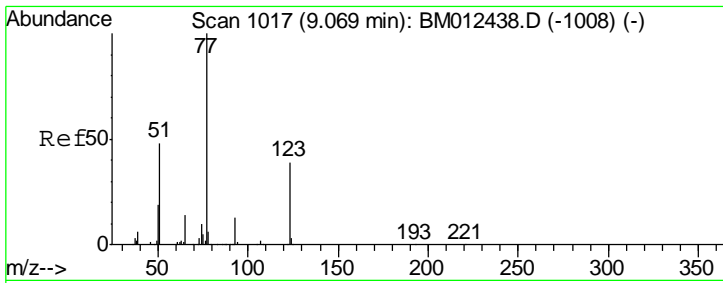
Tgt Ion	Resp	Lower	Upper
70	100		
42	45.3	76.0	114.0#
101	0.1	6.7	10.1#
130	0.0	14.6	22.0#



#17
 Hexachloroethane
 Concen: 442.75 ng/ul
 RT: 9.03 min Scan# 1010
 Delta R.T. 0.07 min
 Lab File: BM012443.D
 Acq: 25 Oct 2017 13:40

Tgt Ion	Resp	Lower	Upper
117	100		
201	0.0	111.6	167.4#
199	0.0	67.8	101.6#

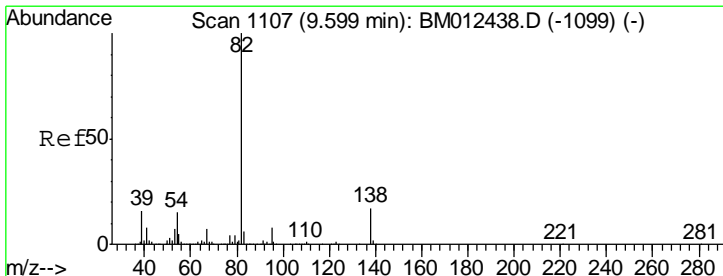
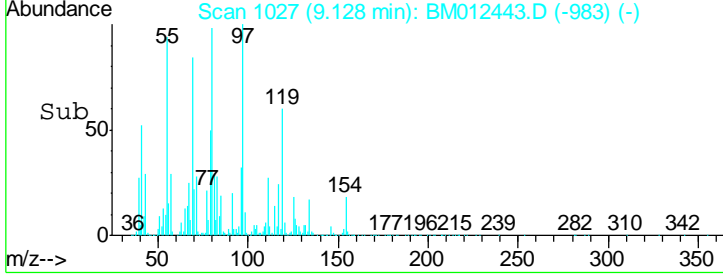
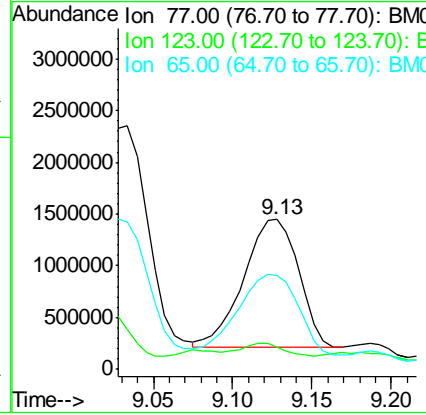
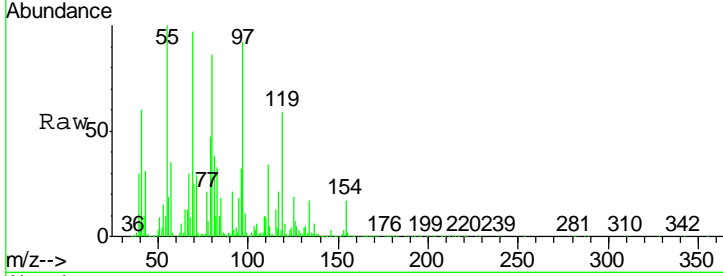




#20
 Nitrobenzene
 Concen: 59.48 ng/ul
 RT: 9.13 min Scan# 1027
 Delta R.T. 0.06 min
 Lab File: BM012443.D
 Acq: 25 Oct 2017 13:40

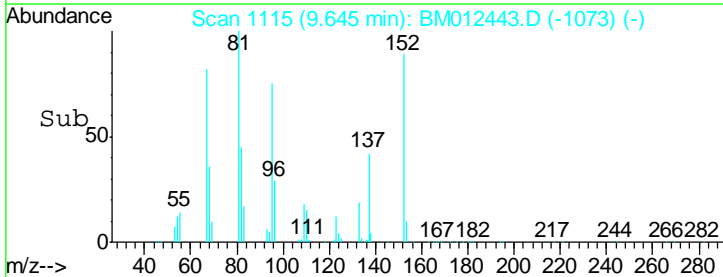
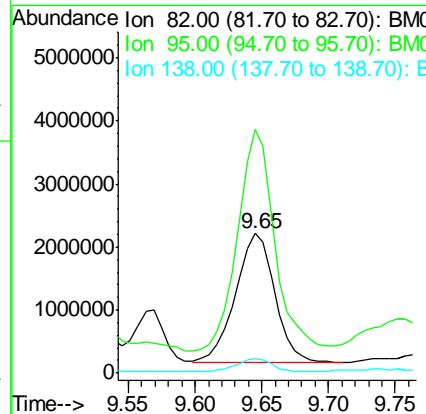
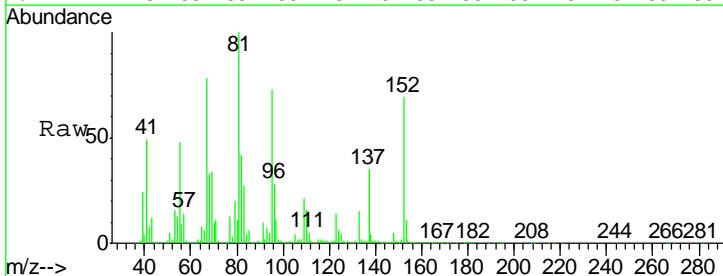
Instrument :
 BNA_M
 ClientSampled :

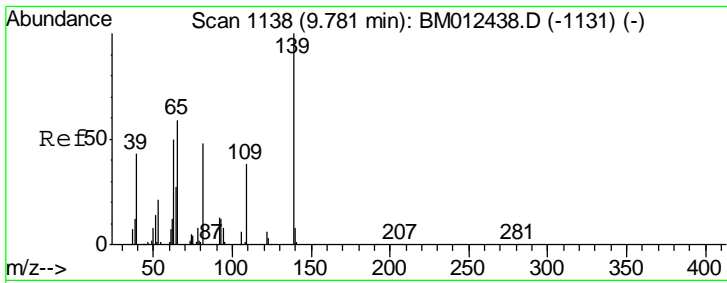
Tgt Ion	Resp	Lower	Upper
77	100		
123	15.2	31.0	46.6#
65	62.7	12.2	18.2#



#21
 Isophorone
 Concen: 39.84 ng/ul
 RT: 9.65 min Scan# 1115
 Delta R.T. 0.05 min
 Lab File: BM012443.D
 Acq: 25 Oct 2017 13:40

Tgt Ion	Resp	Lower	Upper
82	100		
95	174.6	7.8	11.8#
138	10.3	11.9	17.9#

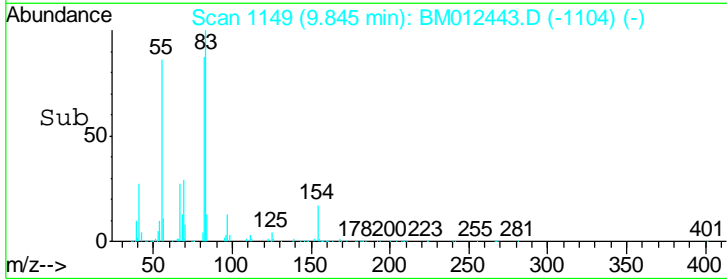
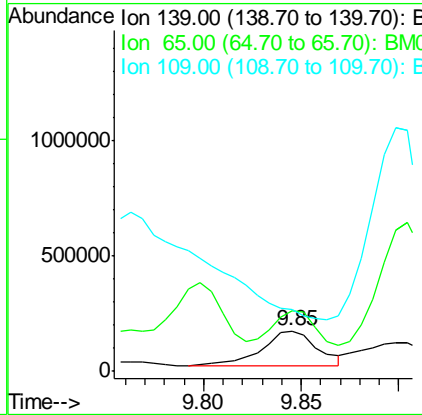
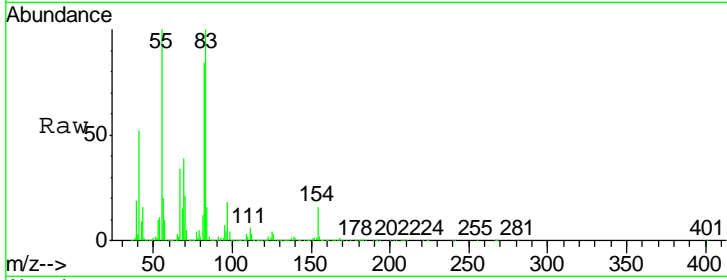




#23
 2-Nitrophenol
 Concen: 15.06 ng/ul
 RT: 9.85 min Scan# 1149
 Delta R.T. 0.06 min
 Lab File: BM012443.D
 Acq: 25 Oct 2017 13:40

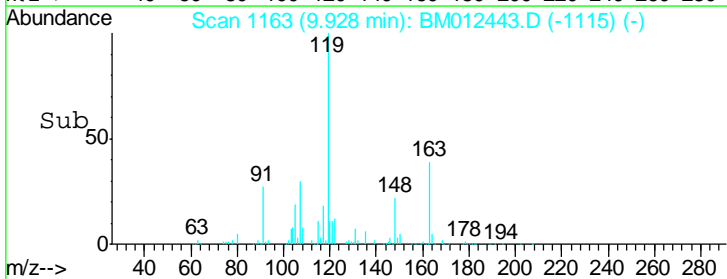
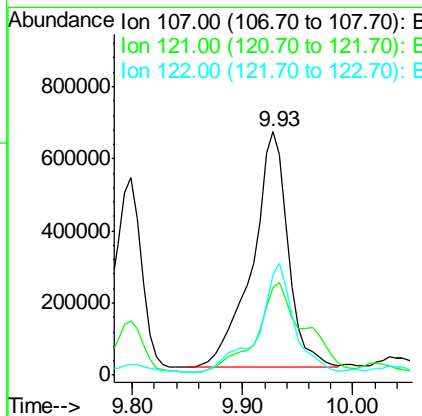
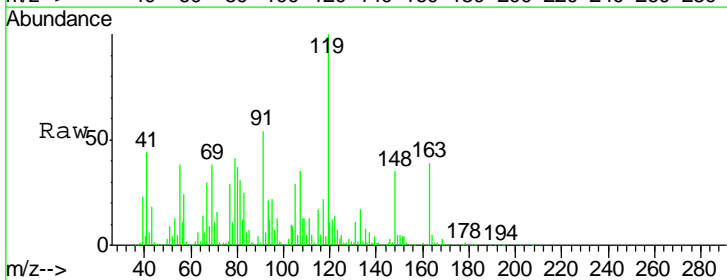
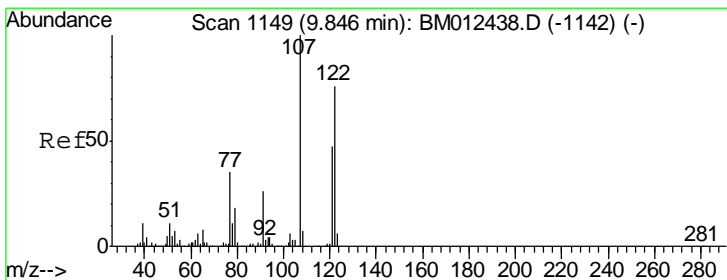
Instrument :
 BNA_M
 ClientSampled :

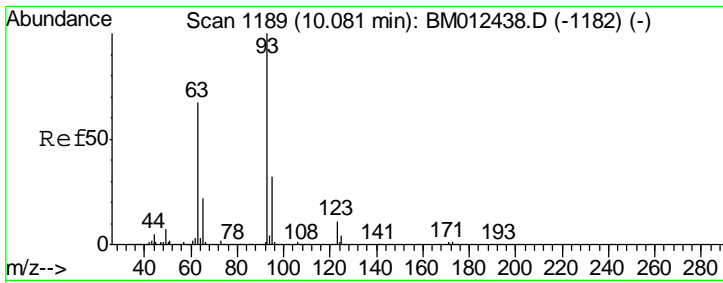
Tgt Ion	Resp	Lower	Upper
139	100		
65	150.3	55.4	83.0#
109	153.8	42.2	63.2#



#24
 2,4-Dimethylphenol
 Concen: 26.11 ng/ul
 RT: 9.93 min Scan# 1163
 Delta R.T. 0.08 min
 Lab File: BM012443.D
 Acq: 25 Oct 2017 13:40

Tgt Ion	Resp	Lower	Upper
107	100		
121	35.7	31.9	47.9
122	41.4	57.8	86.6#

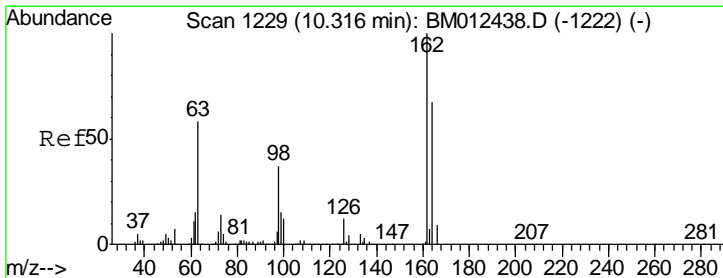
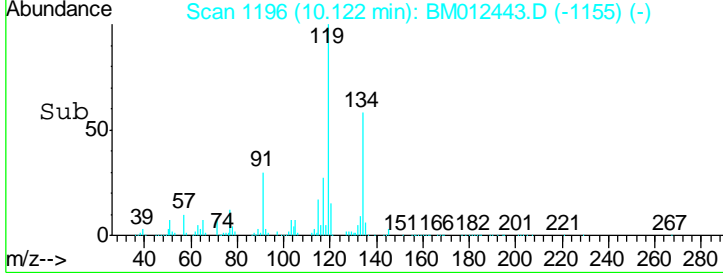
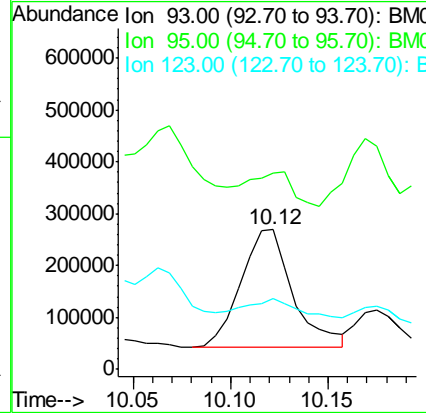
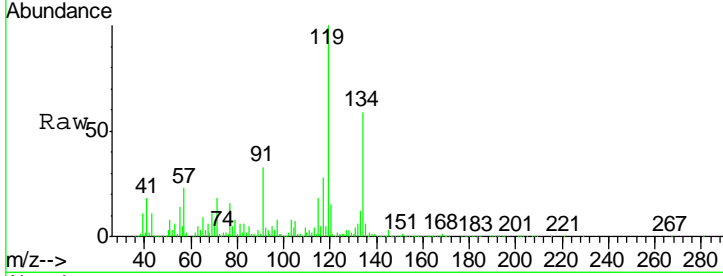




#25
 Bis(2-Chloroethoxy)methane
 Concen: 7.06 ng/ul
 RT: 10.12 min Scan# 1196
 Delta R.T. 0.04 min
 Lab File: BM012443.D
 Acq: 25 Oct 2017 13:40

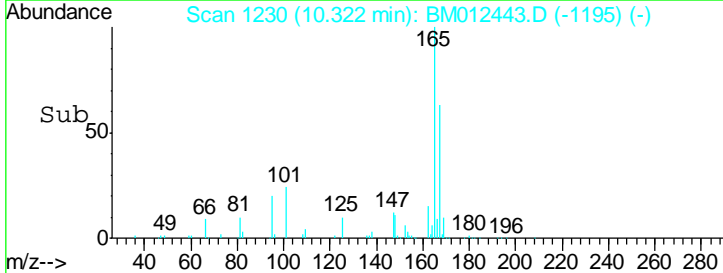
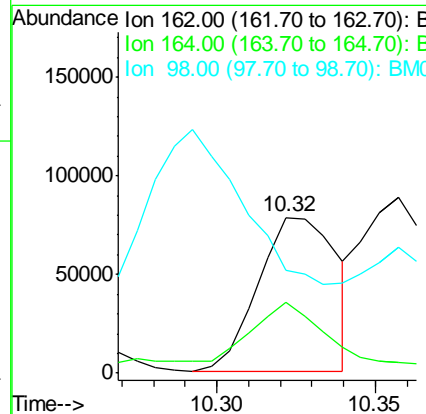
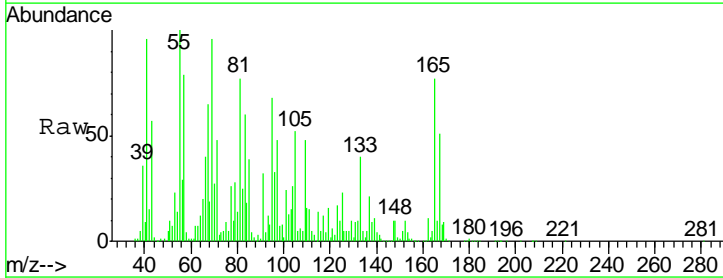
Instrument :
 BNA_M
 ClientSampled :

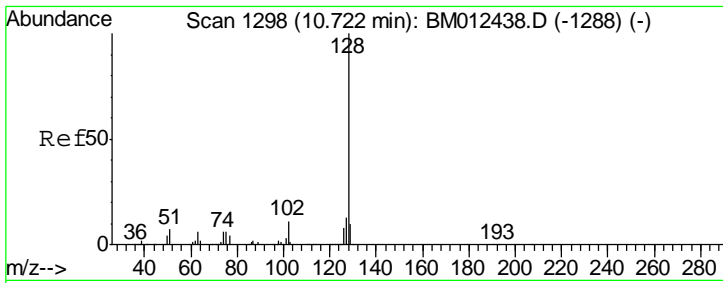
Tgt Ion	Resp	Lower	Upper
93	421125		
93	100		
95	140.6	28.5	42.7#
123	50.6	8.9	13.3#



#27
 2,4-Dichlorophenol
 Concen: 2.90 ng/ul
 RT: 10.32 min Scan# 1230
 Delta R.T. 0.01 min
 Lab File: BM012443.D
 Acq: 25 Oct 2017 13:40

Tgt Ion	Resp	Lower	Upper
162	134429		
162	100		
164	45.8	47.8	71.6#
98	66.2	23.0	34.4#

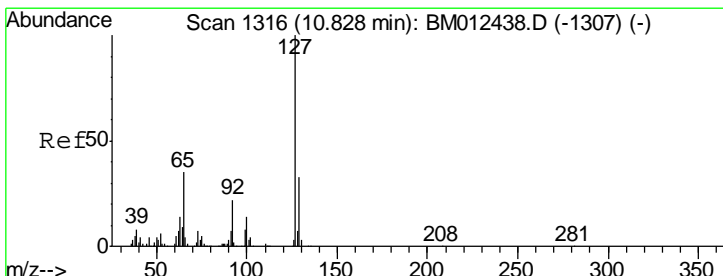
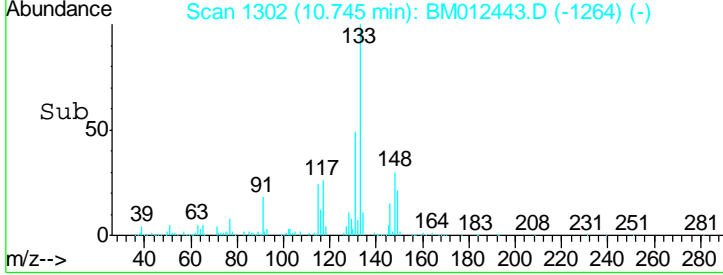
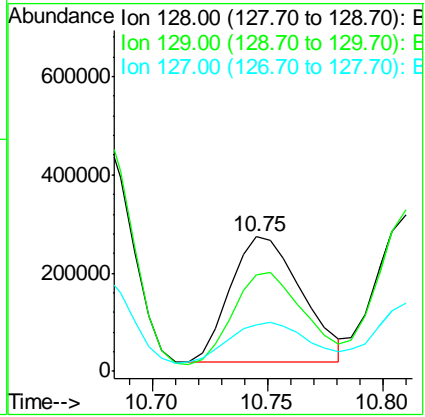
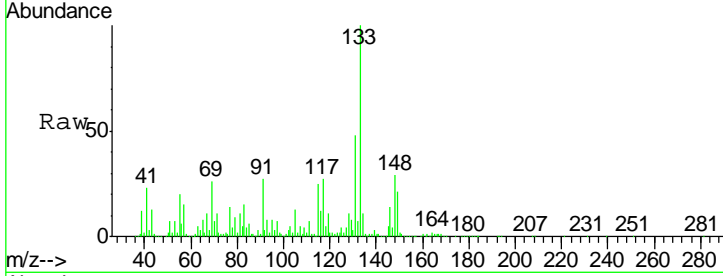




#28
 Naphthalene
 Concen: 4.02 ng/ul
 RT: 10.75 min Scan# 1302
 Delta R.T. 0.02 min
 Lab File: BM012443.D
 Acq: 25 Oct 2017 13:40

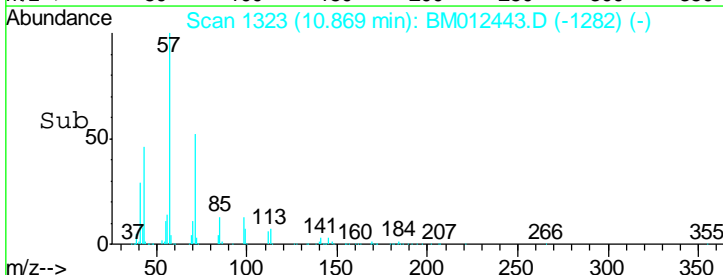
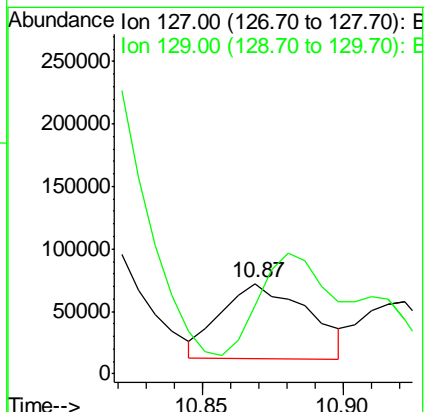
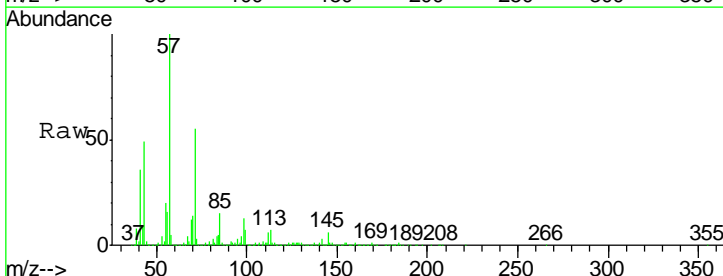
Instrument :
 BNA_M
 ClientSampled :

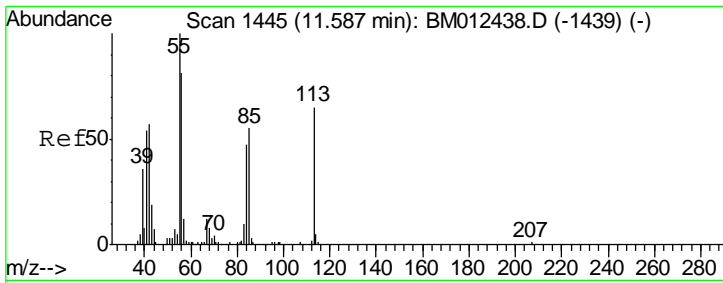
Tgt Ion	Resp	Lower	Upper
128	100		
129	71.9	8.8	13.2#
127	34.3	10.6	16.0#



#30
 4-Chloroaniline
 Concen: 2.56 ng/ul
 RT: 10.87 min Scan# 1323
 Delta R.T. 0.04 min
 Lab File: BM012443.D
 Acq: 25 Oct 2017 13:40

Tgt Ion	Resp	Lower	Upper
127	100		
129	76.1	28.4	42.6#

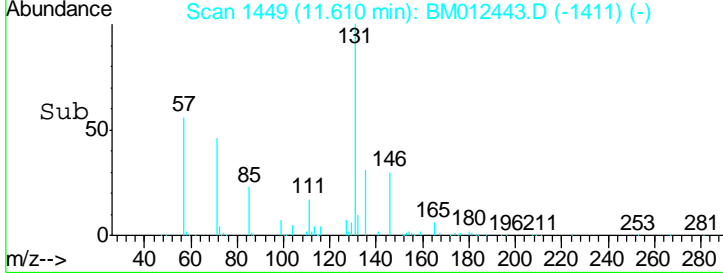
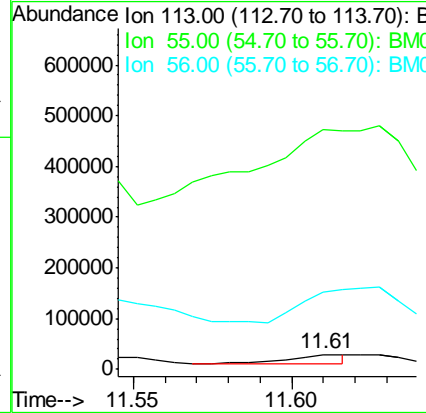
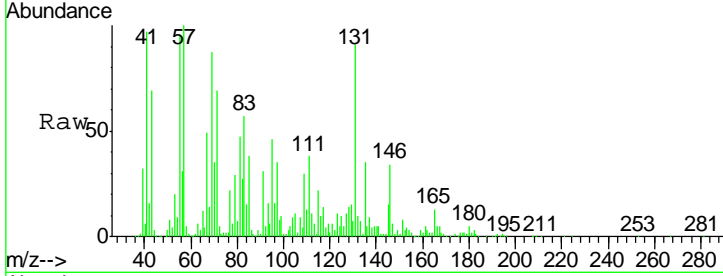




#32
 Caprolactam
 Concen: 1.65 ng/ul
 RT: 11.61 min Scan# 1449
 Delta R.T. 0.02 min
 Lab File: BM012443.D
 Acq: 25 Oct 2017 13:40

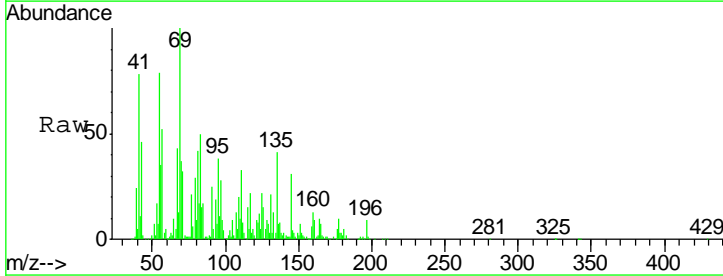
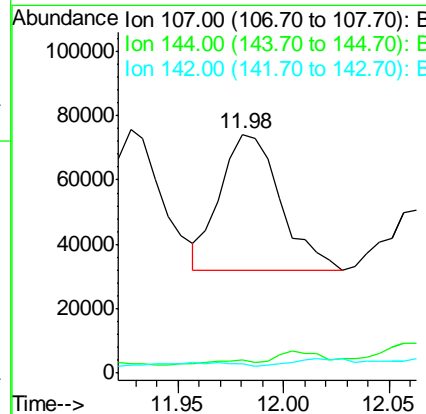
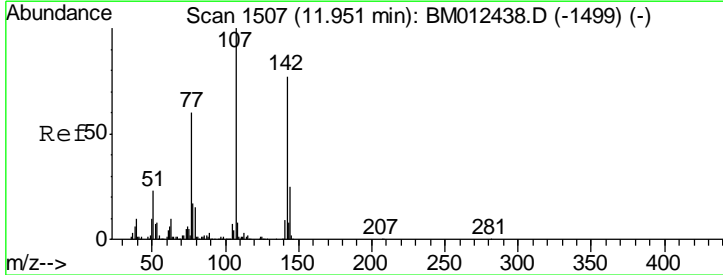
Instrument :
 BNA_M
 ClientSampled :

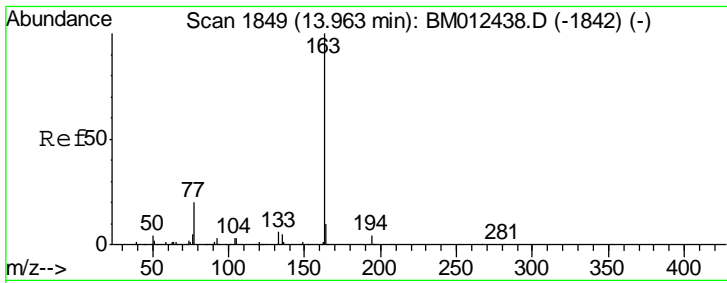
Tgt Ion	Resp	Lower	Upper
113	100		
55	1605.0	208.0	312.0#
56	515.0	160.0	240.0#



#33
 4-Chloro-3-methylphenol
 Concen: 1.60 ng/ul
 RT: 11.98 min Scan# 1512
 Delta R.T. 0.03 min
 Lab File: BM012443.D
 Acq: 25 Oct 2017 13:40

Tgt Ion	Resp	Lower	Upper
107	100		
144	5.6	20.4	30.6#
142	3.9	60.5	90.7#

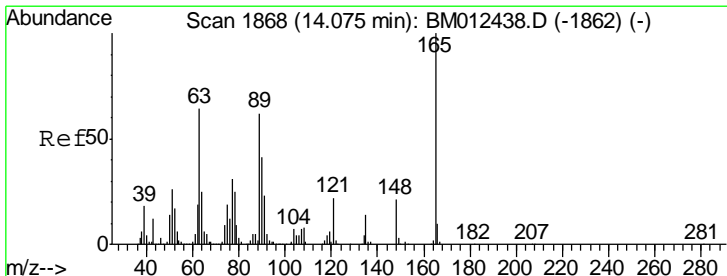
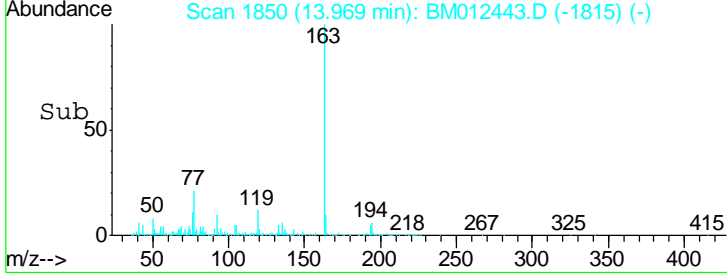
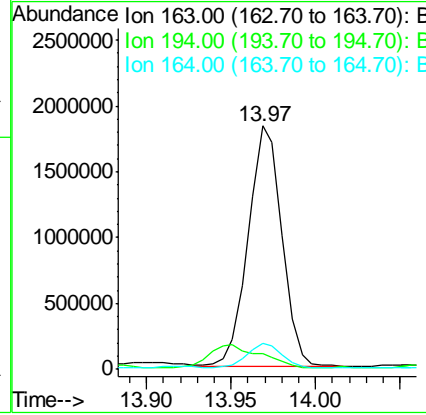
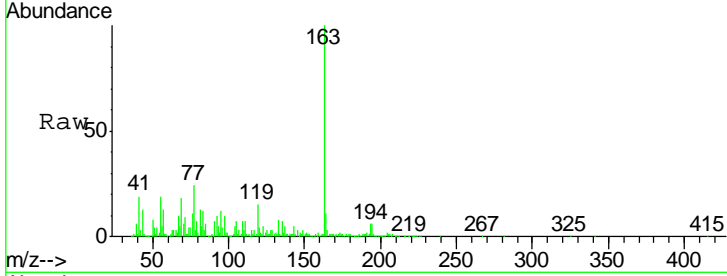




#44
 Dimethylphthalate
 Concen: 17.15 ng/ul
 RT: 13.97 min Scan# 1850
 Delta R.T. 0.01 min
 Lab File: BM012443.D
 Acq: 25 Oct 2017 13:40

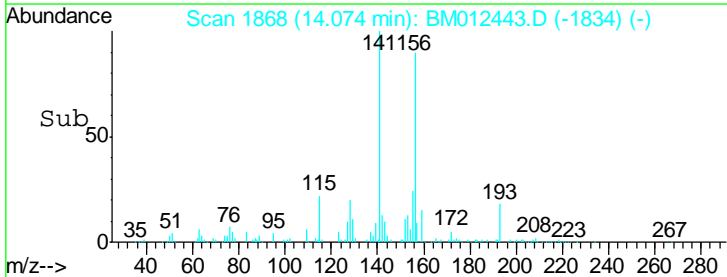
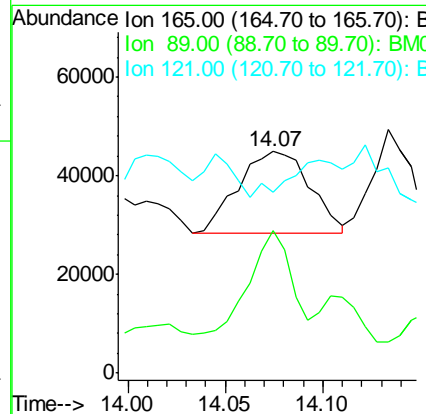
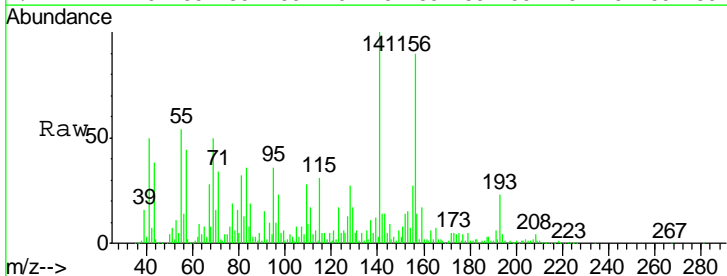
Instrument :
 BNA_M
 ClientSampled :

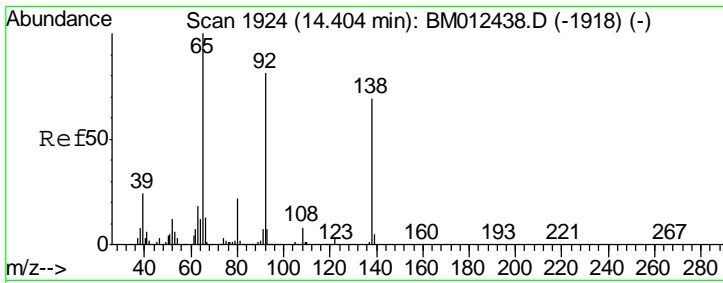
Tgt Ion	Resp	Lower	Upper
163	100		
194	6.3	3.5	5.3#
164	10.7	8.2	12.4



#45
 2,6-Dinitrotoluene
 Concen: 1.78 ng/ul
 RT: 14.07 min Scan# 1868
 Delta R.T. -0.00 min
 Lab File: BM012443.D
 Acq: 25 Oct 2017 13:40

Tgt Ion	Resp	Lower	Upper
165	100		
89	64.3	52.6	79.0
121	81.5	14.6	22.0#

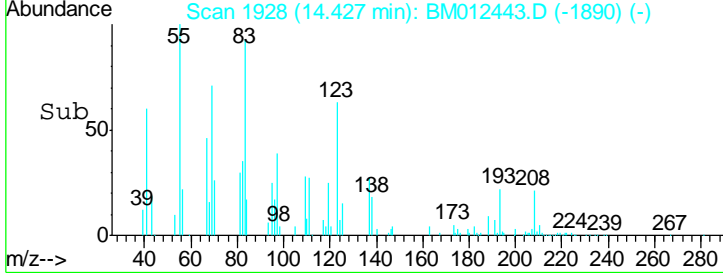
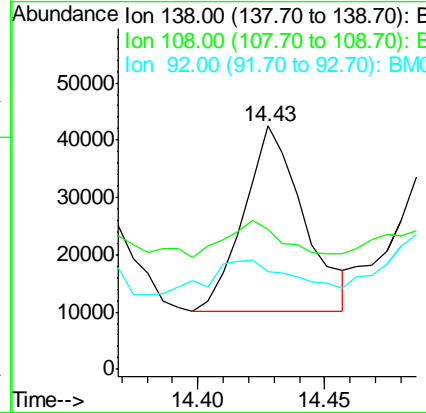
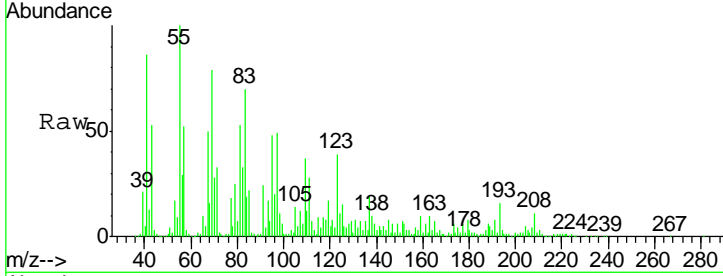




#48
 3-Nitroaniline
 Concen: 2.41 ng/ul
 RT: 14.43 min Scan# 1928
 Delta R.T. 0.02 min
 Lab File: BM012443.D
 Acq: 25 Oct 2017 13:40

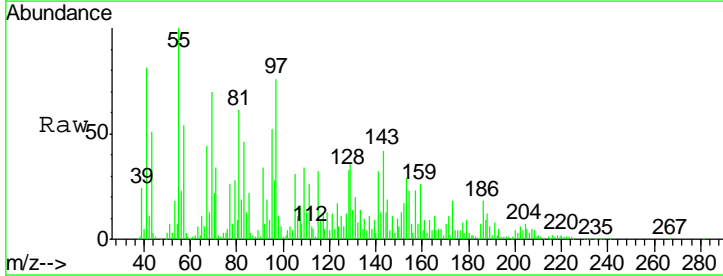
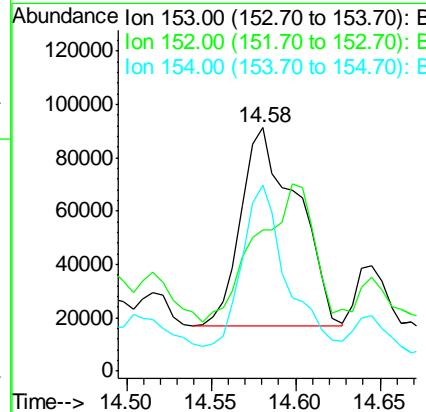
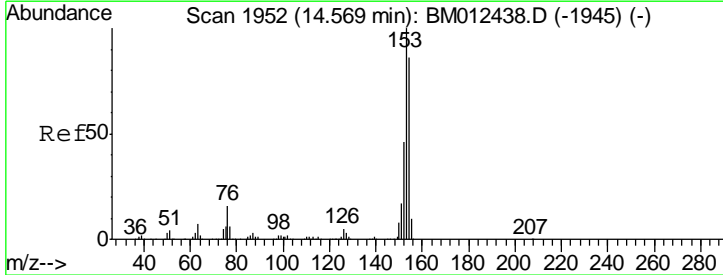
Instrument :
 BNA_M
 ClientSampled :

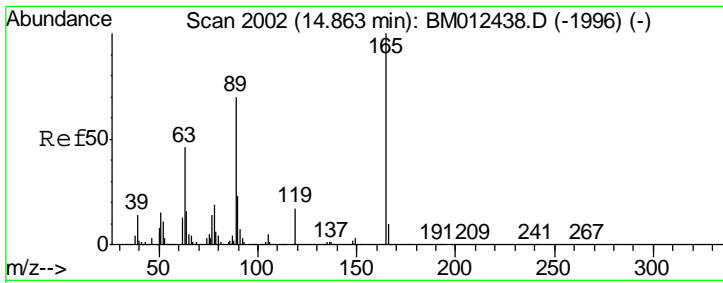
Tgt Ion	Resp	Lower	Upper
138	100		
108	57.2	9.9	14.9#
92	40.3	105.0	157.4#



#49
 Acenaphthene
 Concen: 1.49 ng/ul
 RT: 14.58 min Scan# 1954
 Delta R.T. 0.01 min
 Lab File: BM012443.D
 Acq: 25 Oct 2017 13:40

Tgt Ion	Resp	Lower	Upper
153	100		
152	58.3	37.6	56.4#
154	76.5	70.4	105.6

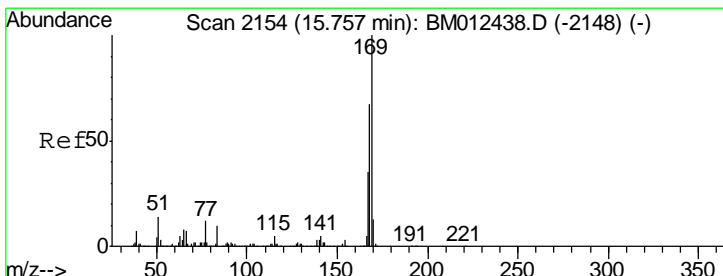
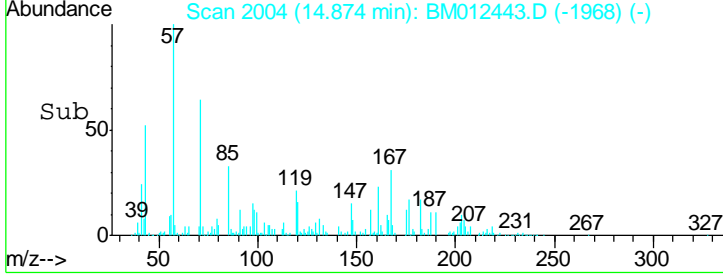
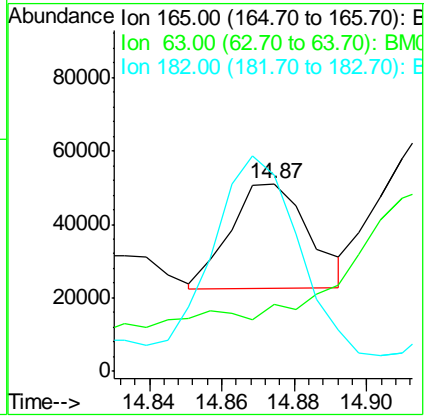
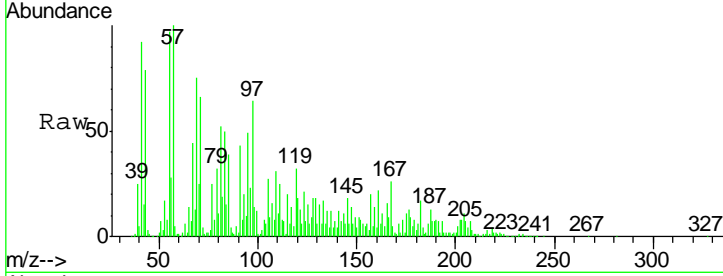




#54
 2,4-Dinitrotoluene
 Concen: 1.23 ng/ul
 RT: 14.87 min Scan# 2004
 Delta R.T. 0.01 min
 Lab File: BM012443.D
 Acq: 25 Oct 2017 13:40

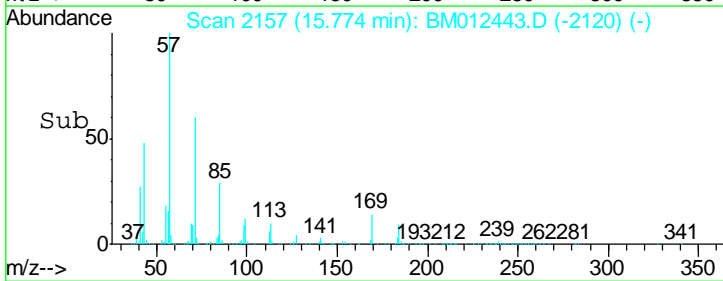
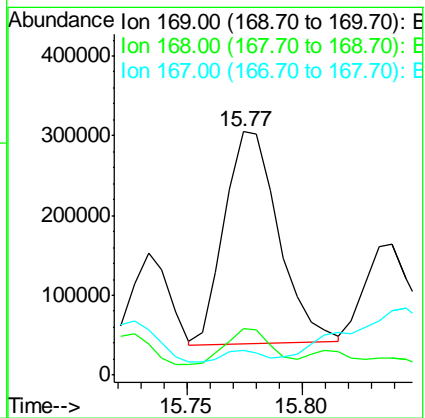
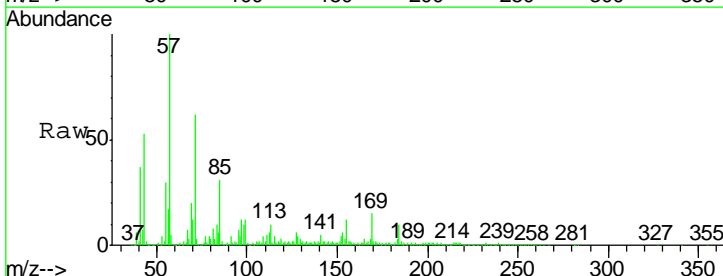
Instrument :
 BNA_M
 ClientSampled :

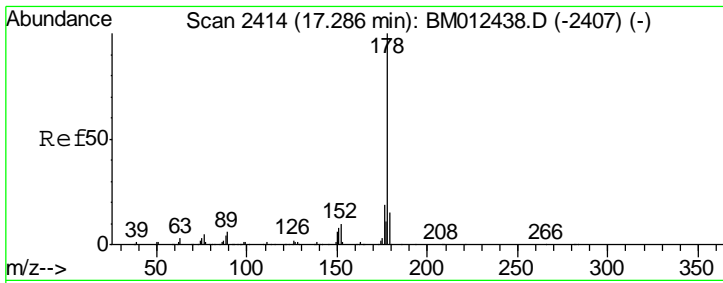
Tgt Ion	Resp	Lower	Upper
165	100		
63	36.0	45.8	68.8#
182	104.7	2.6	4.0#



#64
 N-Nitrosodiphenylamine
 Concen: 3.81 ng/ul
 RT: 15.77 min Scan# 2157
 Delta R.T. 0.02 min
 Lab File: BM012443.D
 Acq: 25 Oct 2017 13:40

Tgt Ion	Resp	Lower	Upper
169	100		
168	19.0	54.0	81.0#
167	10.2	29.1	43.7#

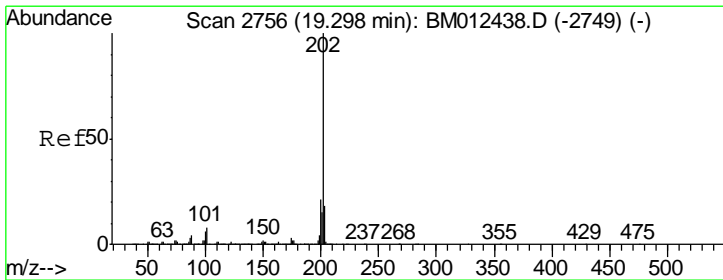
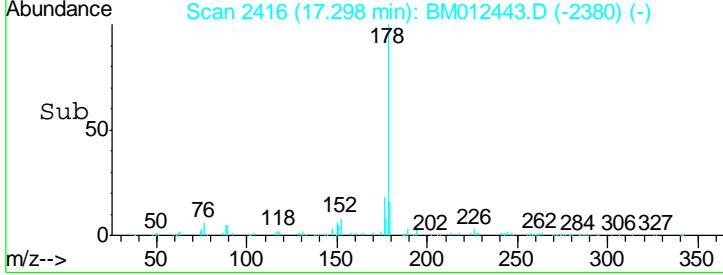
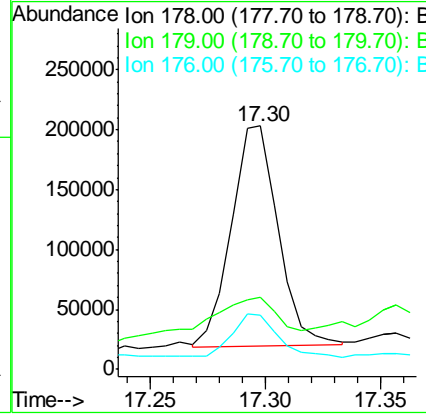
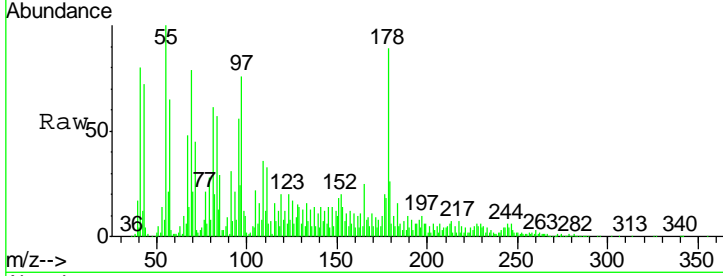




#69
 Phenanthrene
 Concen: 1.22 ng/ul
 RT: 17.30 min Scan# 2416
 Delta R.T. 0.01 min
 Lab File: BM012443.D
 Acq: 25 Oct 2017 13:40

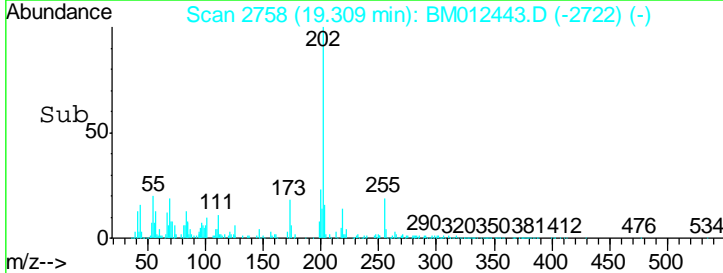
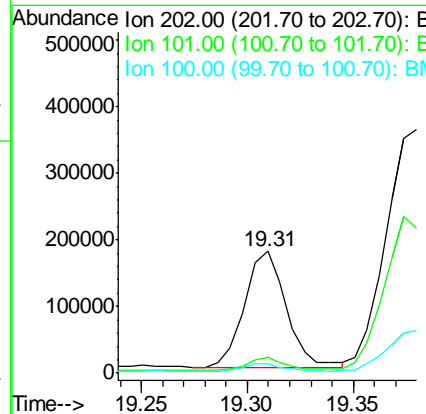
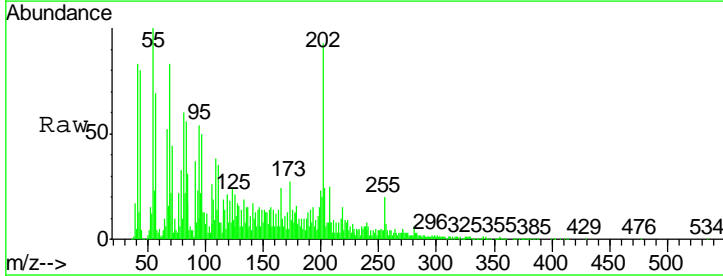
Instrument :
 BNA_M
 ClientSampled :

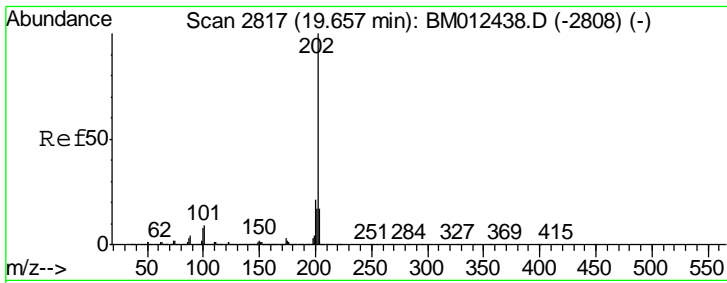
Tgt Ion	Resp	Lower	Upper
178	100		
179	29.5	12.6	19.0#
176	22.2	14.9	22.3



#74
 Fluoranthene
 Concen: 1.01 ng/ul
 RT: 19.31 min Scan# 2758
 Delta R.T. 0.01 min
 Lab File: BM012443.D
 Acq: 25 Oct 2017 13:40

Tgt Ion	Resp	Lower	Upper
202	100		
101	12.5	4.6	7.0#
100	7.9	3.4	5.2#

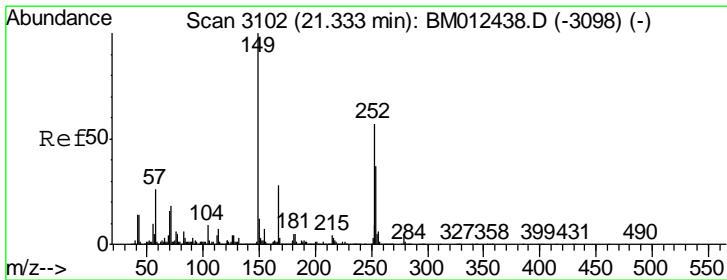
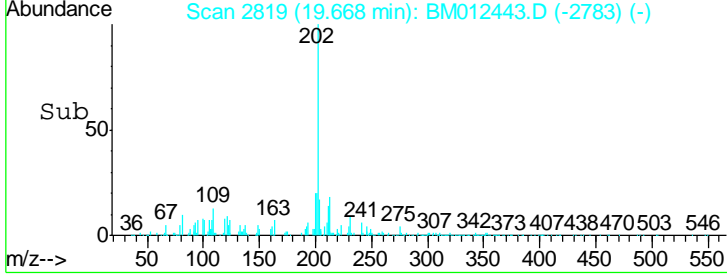
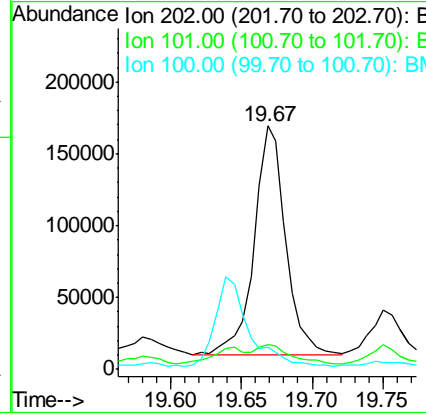
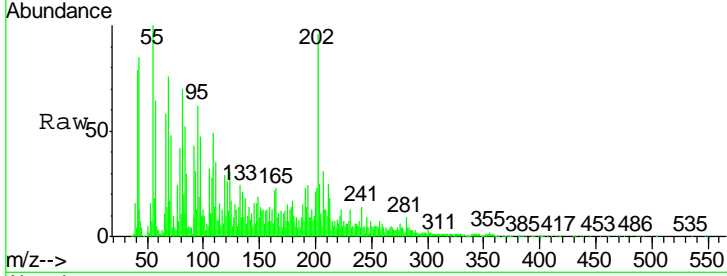




#77
 Pyrene
 Concen: 1.33 ng/ul
 RT: 19.67 min Scan# 2819
 Delta R.T. 0.01 min
 Lab File: BM012443.D
 Acq: 25 Oct 2017 13:40

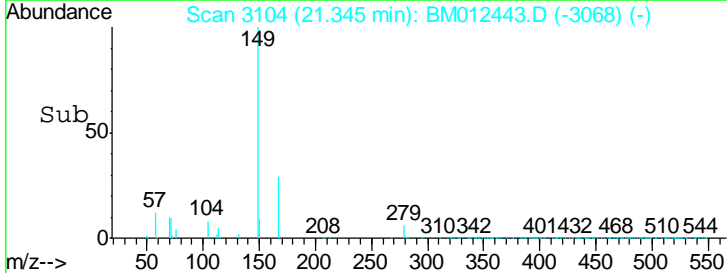
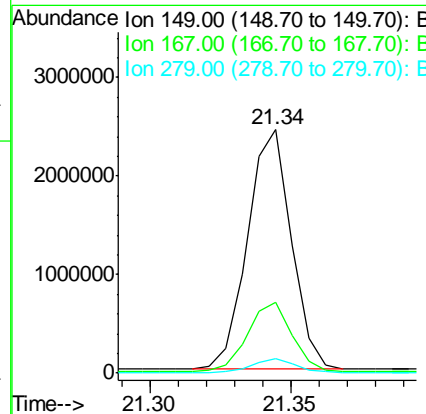
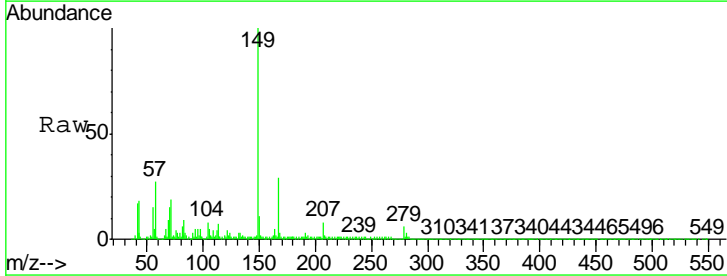
Instrument :
 BNA_M
 ClientSampled :

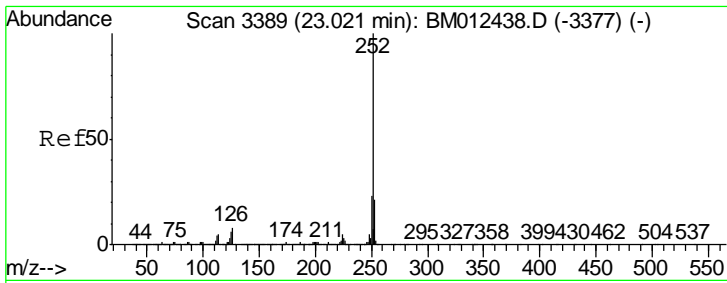
Tgt Ion	Resp	Lower	Upper
202	250445		
101	10.0	5.1	7.7#
100	9.3	4.9	7.3#



#81
 Bis(2-ethylhexyl)phthalate
 Concen: 23.02 ng/ul
 RT: 21.34 min Scan# 3104
 Delta R.T. 0.01 min
 Lab File: BM012443.D
 Acq: 25 Oct 2017 13:40

Tgt Ion	Resp	Lower	Upper
149	2607078		
167	28.8	22.8	34.2
279	5.8	4.9	7.3

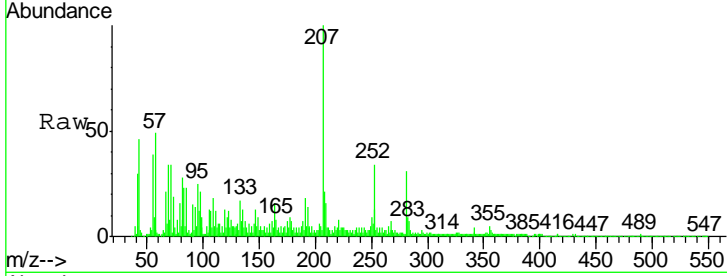




#85

Benzo(b)fluoranthene
 Concen: 1.30 ng/ul
 RT: 23.03 min Scan# 3391
 Delta R.T. 0.01 min
 Lab File: BM012443.D
 Acq: 25 Oct 2017 13:40

Instrument :
 BNA_M
 ClientSampled :



Tot Ion: 252 Resp: 231269

Ion	Ratio	Lower	Upper
252	100		
253	39.1	17.9	26.9#
125	24.6	3.6	5.4#

