

Data Path : Z:\HPCHEM1\BNA M\DATA\BM102517\
 Data File : BM012451.D
 Acq On : 25 Oct 2017 19:22
 Operator : SJ/JU
 Sample : I5719-05 5X
 Misc :
 ALS Vial : 14 Sample Multiplier: 1

Instrument :
 BNA_M
 ClientSampleId :
 B-37(0-1)-100417

Integration Parameters: LSCINT.P

Integrator: RTE
 Smoothing : OFF
 Sampling : 1
 Start Thrs: 0.2
 Stop Thrs : 0

Filtering: 5
 Min Area: 1 % of largest Peak
 Max Peaks: 100
 Peak Location: TOP

If leading or trailing edge < 100 prefer < Baseline drop else tangent >
 Peak separation: 5

Method : Z:\HPCHEM1\BNA M\METHODS\SOM-EPA-BM102417.M
 Title : SVOA CALIBRATION

Signal : TIC

peak #	R.T. min	first scan	max scan	last scan	PK TY	peak height	corr. area	corr. % max.	% of total
1	3.157	8	12	19	rVB	196199	263057	3.42%	0.457%
2	3.881	129	135	141	rVB	104746	141939	1.85%	0.246%
3	5.098	337	342	348	rBV2	71208	114051	1.48%	0.198%
4	7.051	666	674	688	rVB2	290473	647265	8.42%	1.124%
5	7.210	693	701	708	rBV	193337	318717	4.15%	0.553%
6	7.416	731	736	746	rVB	280030	454082	5.91%	0.788%
7	7.881	807	815	823	rBV	2142694	3311598	43.10%	5.748%
8	8.586	927	935	942	rVB	334597	531072	6.91%	0.922%
9	9.033	1006	1011	1018	rVB	254707	400963	5.22%	0.696%
10	9.757	1126	1134	1141	rBV	207840	359454	4.68%	0.624%
11	10.298	1219	1226	1234	rVB	344994	593077	7.72%	1.029%
12	10.675	1282	1290	1297	rBV	2858889	4762900	61.99%	8.268%
13	11.986	1509	1513	1519	rVB2	53641	85048	1.11%	0.148%
14	13.563	1777	1781	1787	rVB2	60601	91869	1.20%	0.159%
15	13.916	1832	1841	1846	rBV	640182	942291	12.26%	1.636%
16	13.963	1846	1849	1857	rVB	345638	468434	6.10%	0.813%
17	14.204	1879	1890	1902	rBV	692868	1206040	15.70%	2.093%
18	14.510	1935	1942	1950	rBV2	4139741	6443639	83.86%	11.185%
19	14.710	1970	1976	1988	rBV	186299	369599	4.81%	0.642%
20	14.910	2006	2010	2016	rVB3	38821	86260	1.12%	0.150%
21	15.504	2105	2111	2116	rBV	884173	1307609	17.02%	2.270%
22	15.615	2126	2130	2137	rVB	128247	181272	2.36%	0.315%
23	15.862	2168	2172	2178	rVB	305811	452560	5.89%	0.786%
24	16.233	2231	2235	2240	rBV8	45000	87534	1.14%	0.152%
25	16.904	2347	2349	2355	rVB2	63517	88196	1.15%	0.153%
26	17.068	2374	2377	2384	rVB	77888	110628	1.44%	0.192%
27	17.251	2402	2408	2412	rBV2	5200388	7160835	93.19%	12.430%
28	17.292	2412	2415	2420	rVV	1023363	1344784	17.50%	2.334%
29	17.351	2420	2425	2429	rVV	937909	1424948	18.54%	2.473%
30	17.380	2429	2430	2435	rVB	197188	198859	2.59%	0.345%
31	17.439	2437	2440	2447	rVB2	57740	108286	1.41%	0.188%
32	18.145	2553	2560	2563	rBV2	702298	1174160	15.28%	2.038%
33	18.321	2585	2590	2594	rBV3	225619	409995	5.34%	0.712%
34	18.621	2639	2641	2645	rVV	102245	106395	1.38%	0.185%

Data Path : Z:\HPCHEM1\BNA M\DATA\BM102517\
Data File : BM012451.D
Acq On : 25 Oct 2017 19:22
Operator : SJ/JU
Sample : I5719-05 5X
Misc :
ALS Vial : 14 Sample Multiplier: 1

Instrument :
BNA_M
ClientSampleId :
B-37(0-1)-100417

Integration Parameters: LSCINT.P
Integrator: RTE
Smoothing : OFF Filtering: 5
Sampling : 1 Min Area: 1 % of largest Peak
Start Thrs: 0.2 Max Peaks: 100
Stop Thrs : 0 Peak Location: TOP

If leading or trailing edge < 100 prefer < Baseline drop else tangent >
Peak separation: 5

Method : Z:\HPCHEM1\BNA M\METHODS\SOM-EPA-BM102417.M
Title : SVOA CALIBRATION

35	18.662	2645	2648	2656	rVB4	137933	227922	2.97%	0.396%
36	19.039	2710	2712	2716	rVB	129099	145203	1.89%	0.252%
37	19.303	2752	2757	2762	rBV	2127408	2800646	36.45%	4.861%
38	19.421	2774	2777	2786	rBV2	777819	1147071	14.93%	1.991%
39	19.633	2809	2813	2815	rBV2	1178887	1556516	20.26%	2.702%
40	19.662	2815	2818	2824	rVB	1761695	2441302	31.77%	4.238%
41	21.421	3111	3117	3121	rBV2	4949448	7683938	100.00%	13.338%
42	23.733	3505	3510	3516	rVB	3151860	5859099	76.25%	10.170%

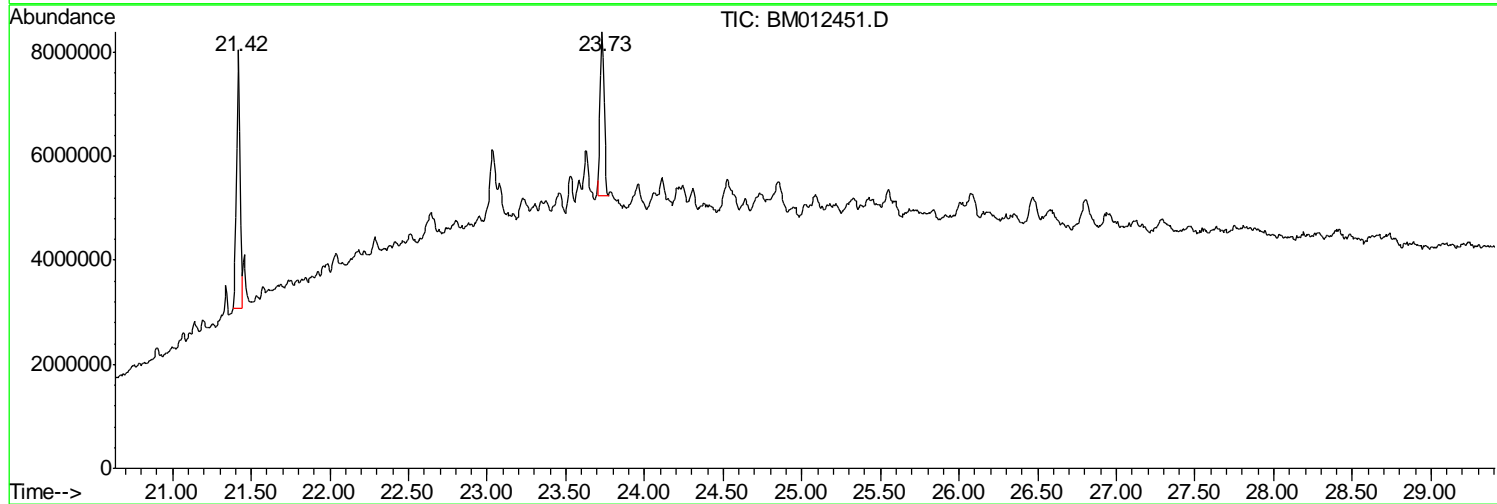
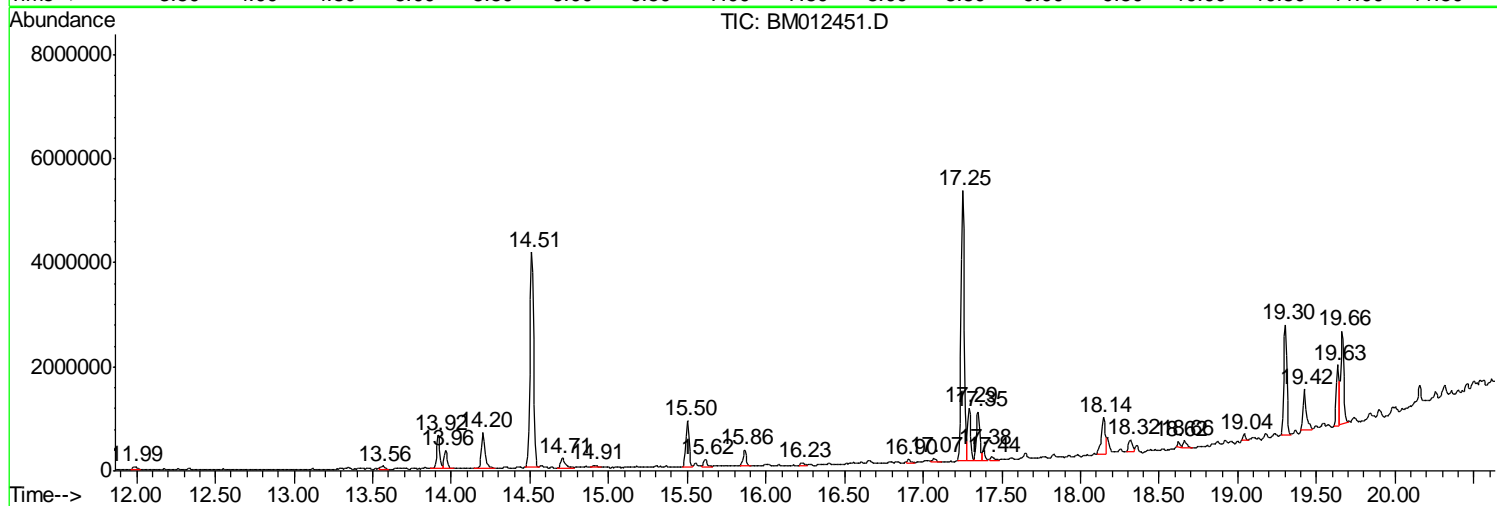
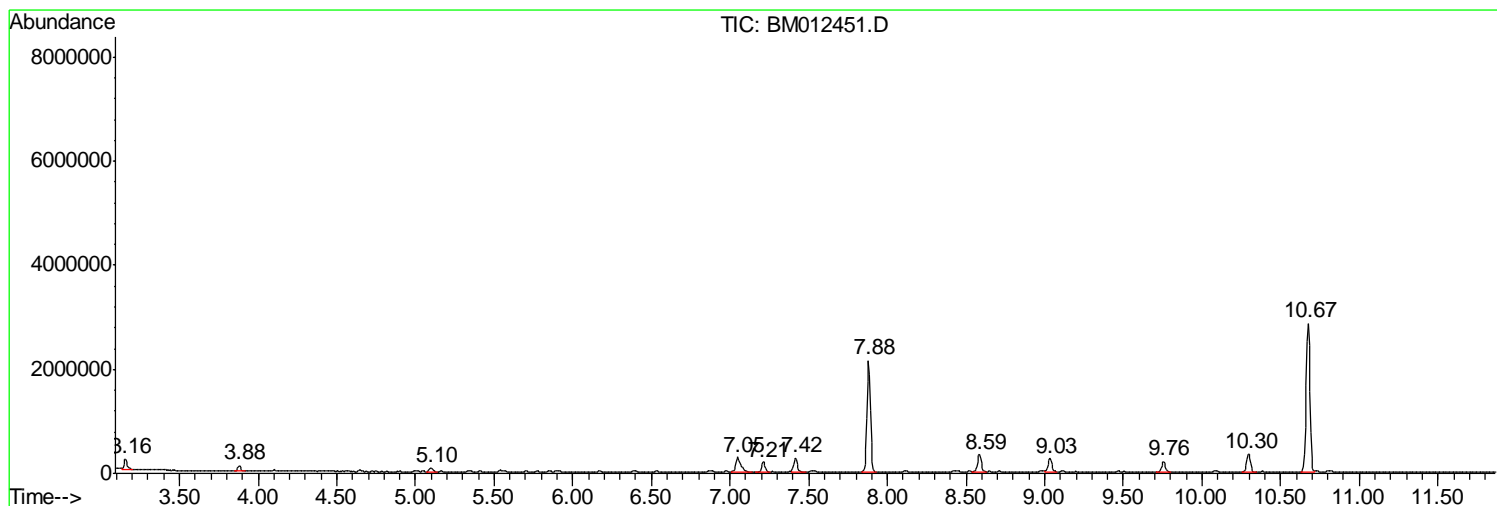
Sum of corrected areas: 57609113

Data Path : Z:\HPCHEM1\BNA M\DATA\BM102517\
 Data File : BM012451.D
 Acq On : 25 Oct 2017 19:22
 Operator : SJ/JU
 Sample : I5719-05 5X
 Misc :
 ALS Vial : 14 Sample Multiplier: 1

Instrument :
 BNA_M
 ClientSampled :
 B-37(0-1)-100417

Quant Method : Z:\HPCHEM1\BNA M\METHODS\SOM-EPA-BM102417.M
 Quant Title : SVOA CALIBRATION

TIC Library : C:\DATABASE\NIST11.L
 TIC Integration Parameters: LSCINT.P



Data Path : Z:\HPCHEM1\BNA M\DATA\BM102517\
 Data File : BM012451.D
 Acq On : 25 Oct 2017 19:22
 Operator : SJ/JU
 Sample : I5719-05 5X
 Misc :
 ALS Vial : 14 Sample Multiplier: 1

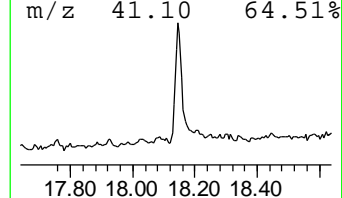
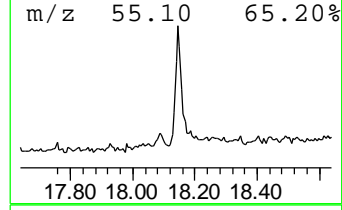
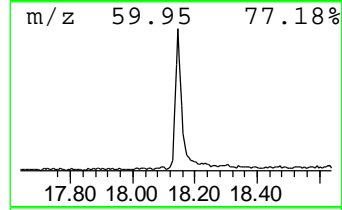
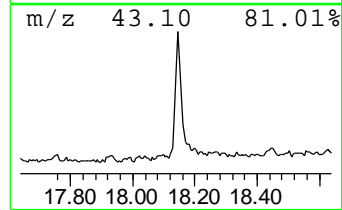
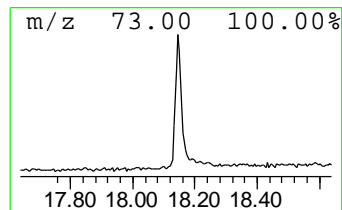
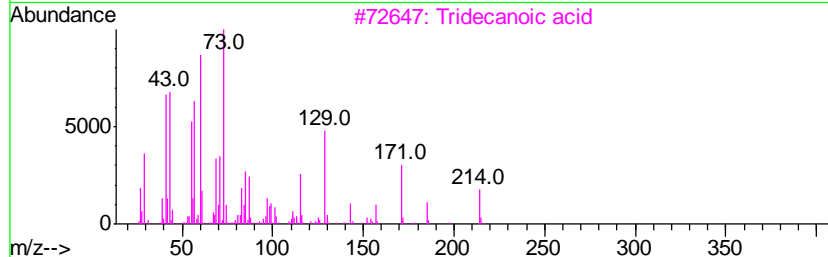
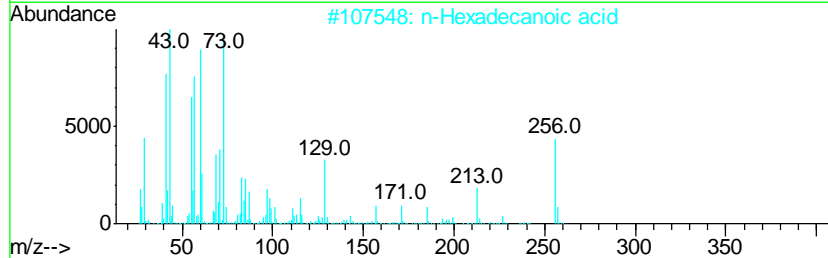
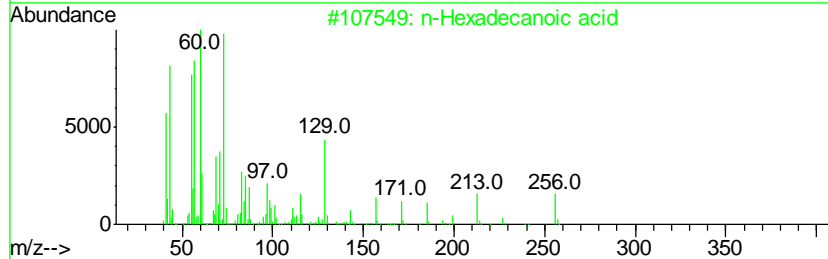
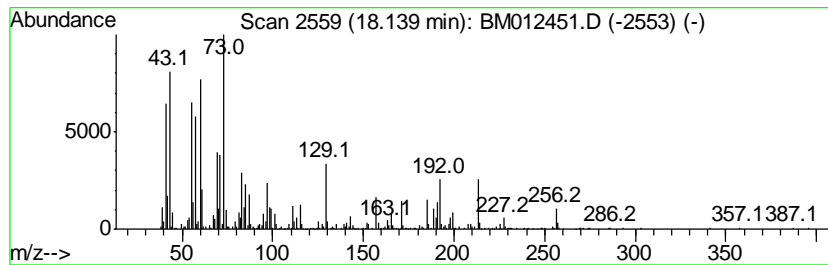
Instrument :
 BNA_M
 ClientSampleId :
 B-37(0-1)-100417

Quant Method : Z:\HPCHEM1\BNA M\METHODS\SOM-EPA-BM102417.M
 Quant Title : SVOA CALIBRATION

TIC Library : C:\DATABASE\NIST11.L
 TIC Integration Parameters: LSCINT.P

 Peak Number 1 n-Hexadecanoic acid Concentration Rank 1

R.T.	EstConc	Area	Relative to ISTD	R.T.		
18.14	3.28 ng/ul	1174160	Phenanthrene-d10	17.25		
Hit# of	5	Tentative ID	MW	MolForm	CAS#	Qual
1		n-Hexadecanoic acid	256	C16H32O2	000057-10-3	99
2		n-Hexadecanoic acid	256	C16H32O2	000057-10-3	98
3		Tridecanoic acid	214	C13H26O2	000638-53-9	95
4		Tetradecanoic acid	228	C14H28O2	000544-63-8	94
5		Tridecanoic acid	214	C13H26O2	000638-53-9	93



Data Path : Z:\HPCHEM1\BNA M\DATA\BM102517\
 Data File : BM012451.D
 Acq On : 25 Oct 2017 19:22
 Operator : SJ/JU
 Sample : I5719-05 5X
 Misc :
 ALS Vial : 14 Sample Multiplier: 1

Instrument :
 BNA_M
 ClientSampleId :
 B-37(0-1)-100417

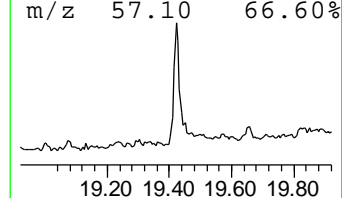
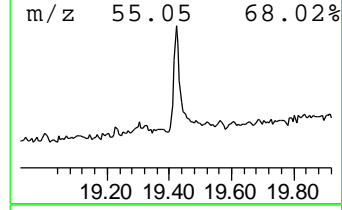
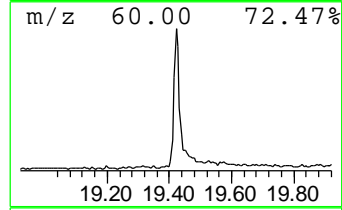
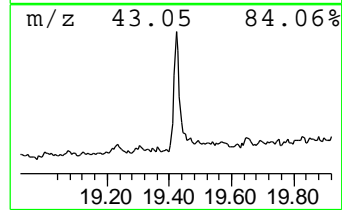
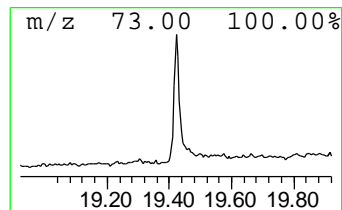
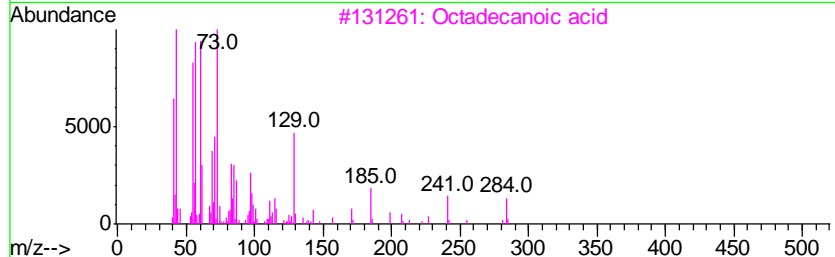
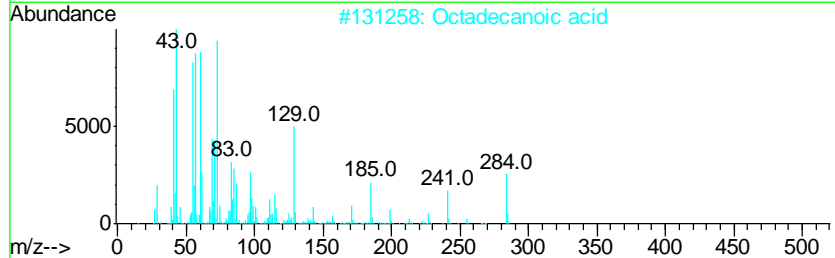
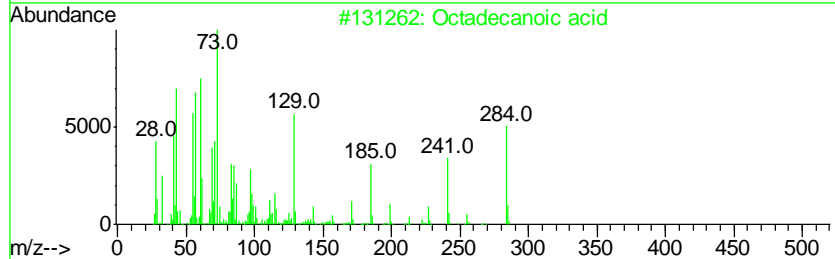
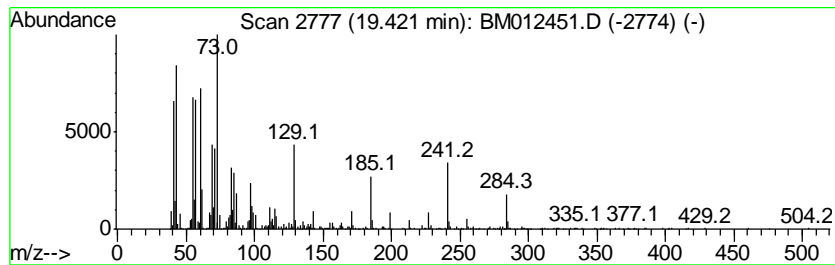
Quant Method : Z:\HPCHEM1\BNA M\METHODS\SOM-EPA-BM102417.M
 Quant Title : SVOA CALIBRATION

TIC Library : C:\DATABASE\NIST11.L
 TIC Integration Parameters: LSCINT.P

 Peak Number 2 Octadecanoic acid Concentration Rank 2

R.T.	EstConc	Area	Relative to ISTD	R.T.
19.42	2.99 ng/ul	1147070	Chrysene-d12	21.42

Hit#	of	Tentative ID	MW	MolForm	CAS#	Qual
1	5	Octadecanoic acid	284	C18H36O2	000057-11-4	99
2		Octadecanoic acid	284	C18H36O2	000057-11-4	99
3		Octadecanoic acid	284	C18H36O2	000057-11-4	99
4		Octadecanoic acid	284	C18H36O2	000057-11-4	90
5		Tetradecanoic acid	228	C14H28O2	000544-63-8	74



Data Path : Z:\HPCHEM1\BNA_M\DATA\BM102517\
Data File : BM012451.D
Acq On : 25 Oct 2017 19:22
Operator : SJ/JU
Sample : I5719-05 5X
Misc :
ALS Vial : 14 Sample Multiplier: 1

Instrument :
BNA_M
ClientSampleId :
B-37(0-1)-100417

Quant Method : Z:\HPCHEM1\BNA_M\METHODS\SOM-EPA-BM102417.M
Quant Title : SVOA CALIBRATION

TIC Library : C:\DATABASE\NIST11.L
TIC Integration Parameters: LSCINT.P

TIC Top Hit name	RT	EstConc	Units	Response	--Internal Standard--			
					#	RT	Resp	Conc
n-Hexadecanoic acid	18.14	3.3	ng/ul	1174160	4	17.25	7160840	20.0
Octadecanoic acid	19.42	3.0	ng/ul	1147070	5	21.42	7683940	20.0