

Data Path : Z:\HPCHEM1\BNA M\DATA\BM102517\
 Data File : BM012463.D
 Acq On : 26 Oct 2017 02:38
 Operator : SJ/JU
 Sample : I5873-02 2X
 Misc :
 ALS Vial : 26 Sample Multiplier: 1

Instrument :
 BNA_M
 ClientSampleId :
 B-13(0-1)_101117

Integration Parameters: LSCINT.P

Integrator: RTE
 Smoothing : OFF
 Sampling : 1
 Start Thrs: 0.2
 Stop Thrs : 0

Filtering: 5
 Min Area: 1 % of largest Peak
 Max Peaks: 100
 Peak Location: TOP

If leading or trailing edge < 100 prefer < Baseline drop else tangent >
 Peak separation: 5

Method : Z:\HPCHEM1\BNA M\METHODS\SOM-EPA-BM102417.M
 Title : SVOA CALIBRATION

Signal : TIC

peak #	R.T. min	first scan	max scan	last scan	PK TY	peak height	corr. area	corr. % max.	% of total
1	4.099	168	172	181	rVB	359588	518938	5.13%	0.407%
2	5.404	388	394	401	rVB	342565	529858	5.24%	0.415%
3	5.540	409	417	429	rBV	1857292	3658801	36.15%	2.867%
4	5.904	470	479	485	rBV	726807	1168521	11.55%	0.916%
5	7.051	665	674	690	rVB2	894746	1827084	18.05%	1.432%
6	7.210	693	701	708	rBV	787570	1191952	11.78%	0.934%
7	7.416	726	736	747	rVB	613537	1005954	9.94%	0.788%
8	7.881	808	815	822	rBV	2426545	3719985	36.76%	2.915%
9	8.116	849	855	861	rBV	397469	651953	6.44%	0.511%
10	8.587	928	935	942	rBV	1131022	1852587	18.31%	1.452%
11	9.034	1004	1011	1018	rVB	1011706	1620692	16.01%	1.270%
12	9.757	1125	1134	1140	rBV	298875	516340	5.10%	0.405%
13	10.298	1217	1226	1234	rVB	381890	667049	6.59%	0.523%
14	10.675	1281	1290	1296	rBV	3167370	5433848	53.69%	4.259%
15	10.804	1305	1312	1325	rBV	868384	1543172	15.25%	1.209%
16	13.339	1739	1743	1749	rVB2	85537	125882	1.24%	0.099%
17	13.410	1749	1755	1762	rBV	362832	583163	5.76%	0.457%
18	13.916	1836	1841	1845	rBV	2343128	3226092	31.88%	2.528%
19	13.963	1845	1849	1855	rVB	2390558	3264578	32.26%	2.559%
20	14.204	1884	1890	1900	rVB	2682633	3941163	38.94%	3.089%
21	14.510	1933	1942	1949	rBV2	4726985	7504845	74.16%	5.882%
22	14.574	1949	1953	1960	rVB	125180	206965	2.05%	0.162%
23	14.910	2005	2010	2017	rVB2	140170	241862	2.39%	0.190%
24	15.316	2073	2079	2085	rBV	2962166	3929350	38.83%	3.080%
25	15.363	2085	2087	2092	rVB3	94160	125748	1.24%	0.099%
26	15.504	2105	2111	2116	rBV	3525358	4901147	48.43%	3.841%
27	15.557	2116	2120	2124	rVB2	132956	180288	1.78%	0.141%
28	15.633	2129	2133	2138	rBV	436101	571317	5.65%	0.448%
29	15.886	2171	2176	2181	rVB	636502	841372	8.31%	0.659%
30	16.227	2230	2234	2236	rBV2	171007	238850	2.36%	0.187%
31	16.251	2236	2238	2242	rVB	217250	231675	2.29%	0.182%
32	16.339	2249	2253	2257	rBV	180445	260291	2.57%	0.204%
33	16.398	2260	2263	2268	rVV2	161199	290477	2.87%	0.228%
34	16.457	2270	2273	2277	rVB2	166317	210425	2.08%	0.165%

Data Path : Z:\HPCHEM1\BNA M\DATA\BM102517\
 Data File : BM012463.D
 Acq On : 26 Oct 2017 02:38
 Operator : SJ/JU
 Sample : I5873-02 2X
 Misc :
 ALS Vial : 26 Sample Multiplier: 1

Instrument :
 BNA_M
 ClientSampleId :
 B-13(0-1)_101117

Integration Parameters: LSCINT.P

Integrator: RTE
 Smoothing : OFF Filtering: 5
 Sampling : 1 Min Area: 1 % of largest Peak
 Start Thrs: 0.2 Max Peaks: 100
 Stop Thrs : 0 Peak Location: TOP

If leading or trailing edge < 100 prefer < Baseline drop else tangent >
 Peak separation: 5

Method : Z:\HPCHEM1\BNA M\METHODS\SOM-EPA-BM102417.M
 Title : SVOA CALIBRATION

35	16.504	2277	2281	2285	rBV2	121634	152596	1.51%	0.120%
36	16.604	2296	2298	2303	rVB4	122235	150900	1.49%	0.118%
37	16.657	2303	2307	2313	rVB3	202173	342987	3.39%	0.269%
38	16.727	2315	2319	2322	rBV	174852	214428	2.12%	0.168%
39	16.798	2327	2331	2335	rBV2	136450	178549	1.76%	0.140%
40	16.904	2346	2349	2358	rVB	150647	222739	2.20%	0.175%
41	17.015	2365	2368	2372	rVV2	125225	146569	1.45%	0.115%
42	17.068	2374	2377	2383	rVB	233858	328135	3.24%	0.257%
43	17.251	2402	2408	2412	rBV2	6225003	8891643	87.86%	6.969%
44	17.292	2412	2415	2420	rVB	1752784	2303795	22.76%	1.806%
45	17.351	2420	2425	2429	rBV	3676059	5167785	51.06%	4.050%
46	17.563	2456	2461	2467	rBV	872371	1128768	11.15%	0.885%
47	17.757	2491	2494	2501	rVB2	124164	176543	1.74%	0.138%
48	17.951	2524	2527	2535	rVB2	222816	342901	3.39%	0.269%
49	18.139	2553	2559	2562	rBV2	247014	580563	5.74%	0.455%
50	18.174	2562	2565	2569	rVB	321754	423496	4.18%	0.332%
51	18.321	2585	2590	2593	rBV3	278439	526559	5.20%	0.413%
52	18.445	2608	2611	2613	rBV	123610	146066	1.44%	0.114%
53	19.074	2716	2718	2719	rBV	172323	138500	1.37%	0.109%
54	19.280	2749	2753	2754	rBV2	872874	1081263	10.68%	0.847%
55	19.304	2754	2757	2762	rVB	2852599	3506757	34.65%	2.748%
56	19.639	2809	2814	2817	rBV	4072693	6466986	63.90%	5.068%
57	20.186	2905	2907	2911	rVB	505077	460481	4.55%	0.361%
58	20.556	2968	2970	2974	rVB	811497	864097	8.54%	0.677%
59	20.680	2988	2991	2997	rBV2	713960	958701	9.47%	0.751%
60	21.139	3066	3069	3075	rVB4	1351963	1706909	16.87%	1.338%
61	21.339	3099	3103	3108	rVB	9721511	10120057	100.00%	7.931%
62	21.421	3111	3117	3121	rBV2	6205836	9352863	92.42%	7.330%
63	21.580	3141	3144	3148	rVB	1253960	1340507	13.25%	1.051%
64	21.974	3208	3211	3216	rVB2	2289026	2688208	26.56%	2.107%
65	22.027	3217	3220	3226	rVB2	1020107	1331744	13.16%	1.044%
66	23.586	3481	3485	3489	rBV2	1662238	2605826	25.75%	2.042%
67	23.733	3505	3510	3516	rVB2	3587389	6766284	66.86%	5.303%

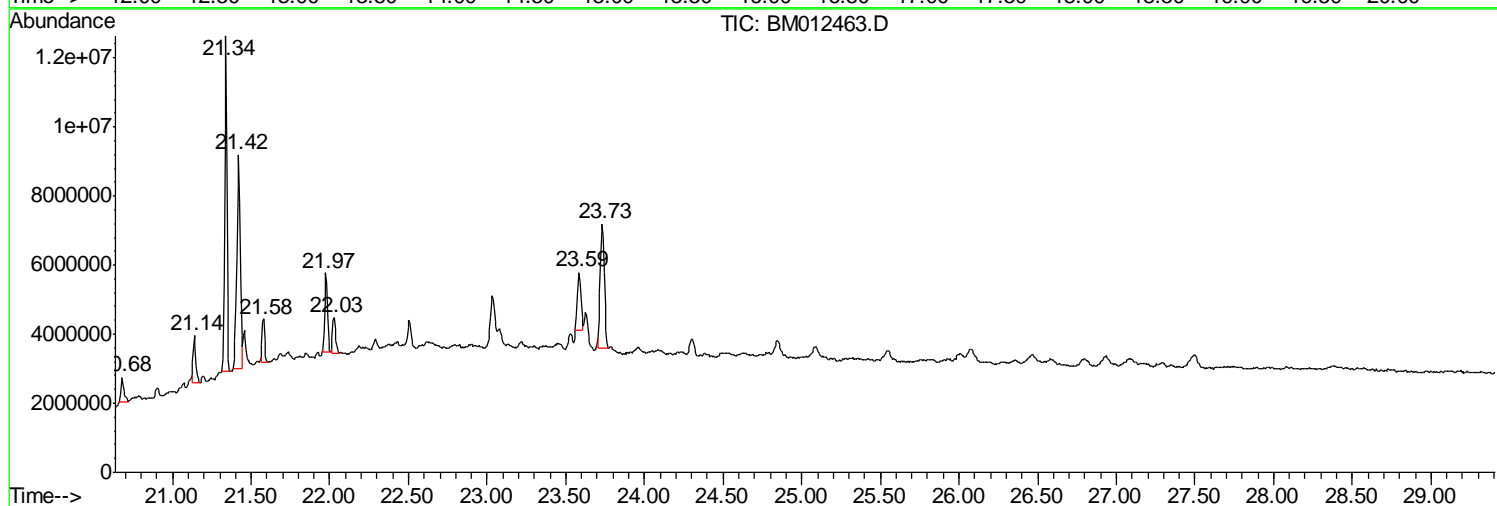
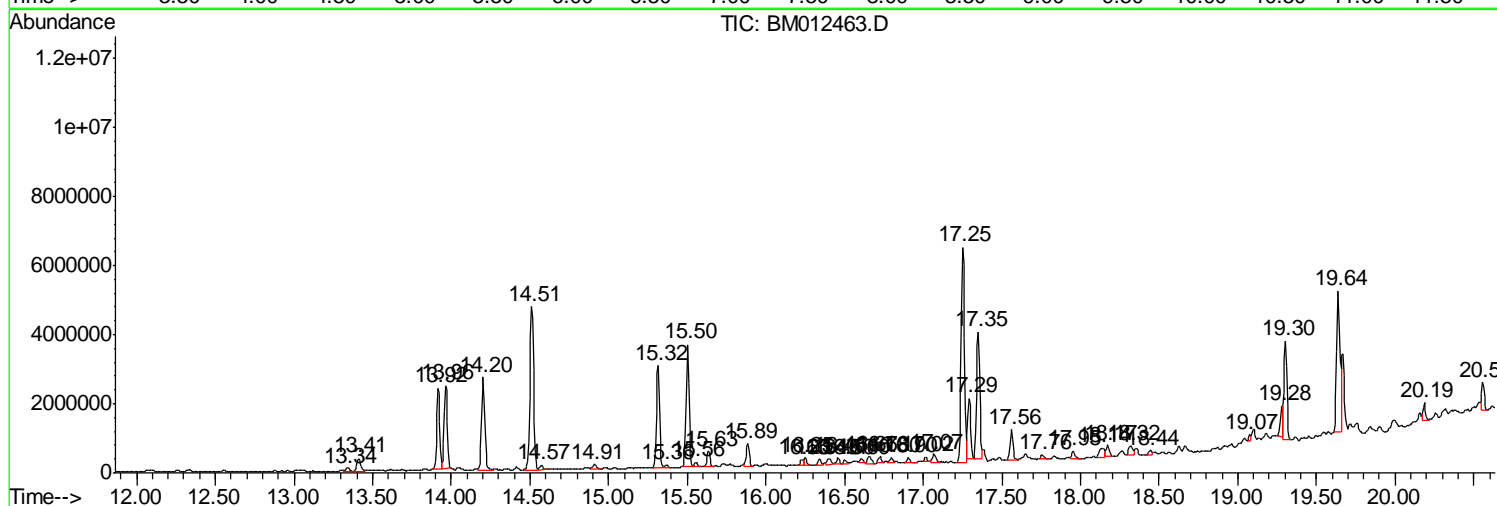
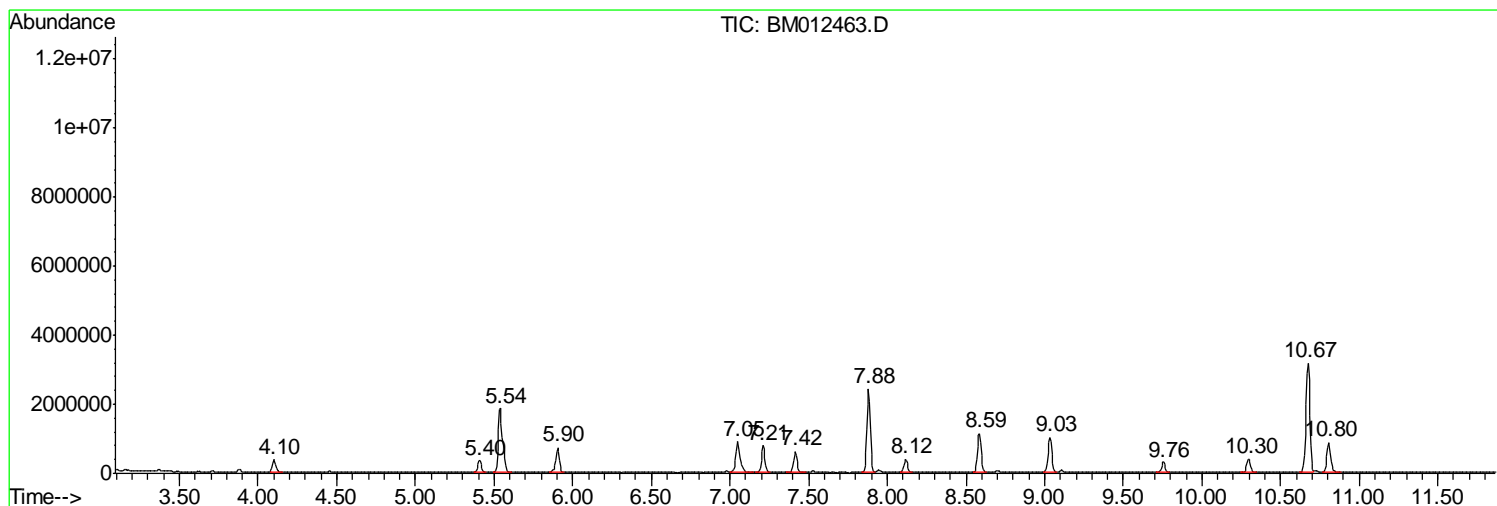
Sum of corrected areas: 127596429

Data Path : Z:\HPCHEM1\BNA M\DATA\BM102517\
 Data File : BM012463.D
 Acq On : 26 Oct 2017 02:38
 Operator : SJ/JU
 Sample : I5873-02 2X
 Misc :
 ALS Vial : 26 Sample Multiplier: 1

Instrument :
 BNA_M
 ClientSampleId :
 B-13(0-1)_101117

Quant Method : Z:\HPCHEM1\BNA M\METHODS\SOM-EPA-BM102417.M
 Quant Title : SVOA CALIBRATION

TIC Library : C:\DATABASE\NIST11.L
 TIC Integration Parameters: LSCINT.P



Data Path : Z:\HPCHEM1\BNA M\DATA\BM102517\
 Data File : BM012463.D
 Acq On : 26 Oct 2017 02:38
 Operator : SJ/JU
 Sample : I5873-02 2X
 Misc :
 ALS Vial : 26 Sample Multiplier: 1

Instrument :
 BNA_M
 ClientSampleId :
 B-13(0-1)_101117

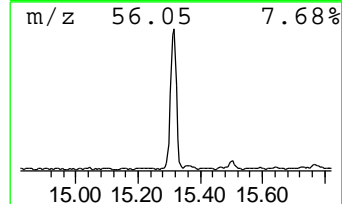
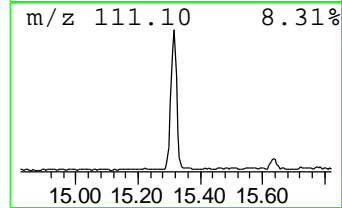
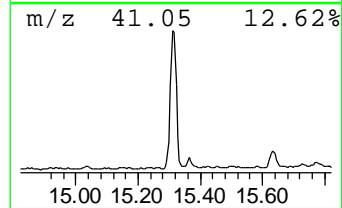
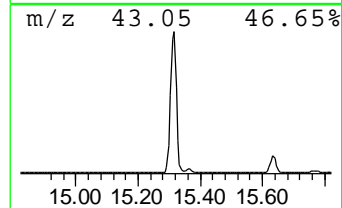
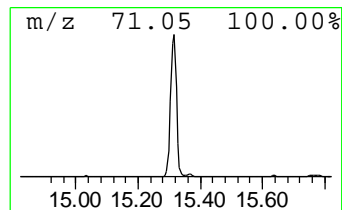
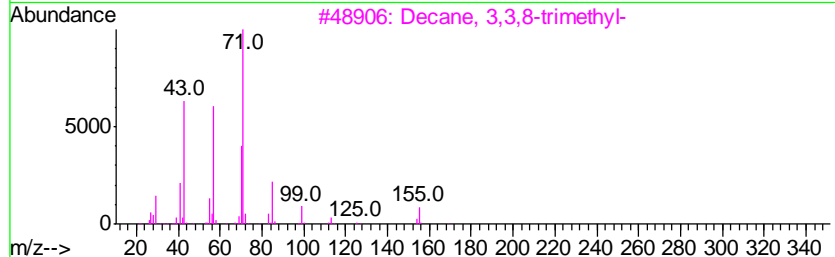
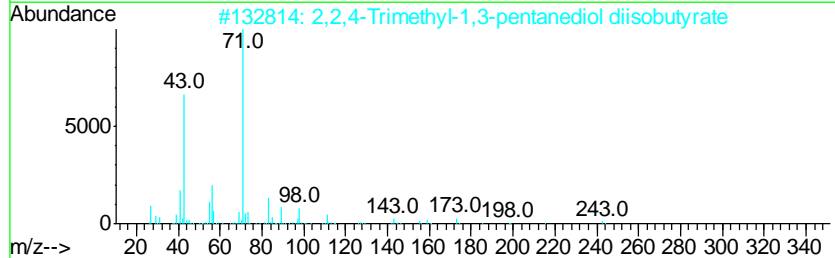
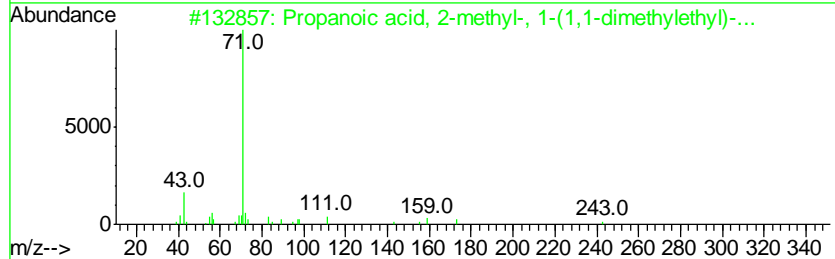
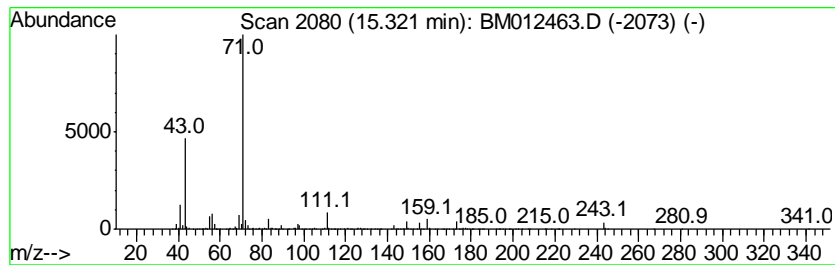
Quant Method : Z:\HPCHEM1\BNA M\METHODS\SOM-EPA-BM102417.M
 Quant Title : SVOA CALIBRATION

TIC Library : C:\DATABASE\NIST11.L
 TIC Integration Parameters: LSCINT.P

 Peak Number 6 Propanoic acid, 2-methyl-, ... Concentration Rank 2

R.T.	EstConc	Area	Relative to ISTD	R.T.
15.32	10.47 ng/ul	3929350	Acenaphthene-d10	14.51

Hit#	of	Tentative ID	MW	MolForm	CAS#	Qual
1	5	Propanoic acid, 2-methyl-, 1-(1,...	286	C16H30O4	074381-40-1	64
2		2,2,4-Trimethyl-1,3-pentanediol ...	286	C16H30O4	006846-50-0	56
3		Decane, 3,3,8-trimethyl-	184	C13H28	062338-16-3	50
4		Cyclopropanemethanol, .alpha.-bu...	128	C8H16O	004379-16-2	45
5		Ethylene glycol di-n-butyrate	202	C10H18O4	000105-72-6	45



Data Path : Z:\HPCHEM1\BNA M\DATA\BM102517\
 Data File : BM012463.D
 Acq On : 26 Oct 2017 02:38
 Operator : SJ/JU
 Sample : I5873-02 2X
 Misc :
 ALS Vial : 26 Sample Multiplier: 1

Instrument :
 BNA_M
 ClientSampleId :
 B-13(0-1)_101117

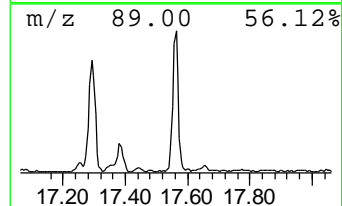
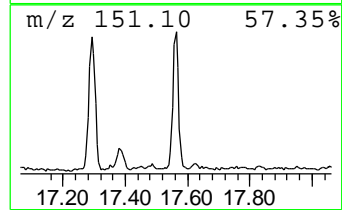
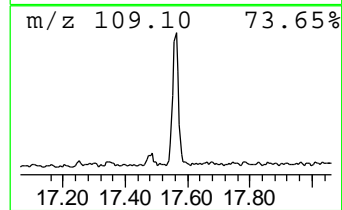
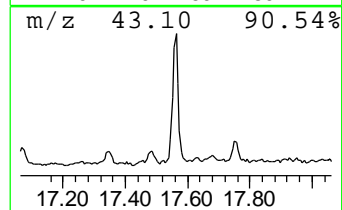
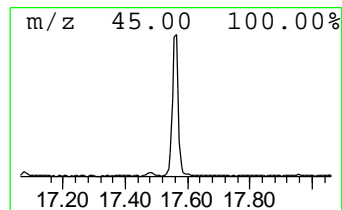
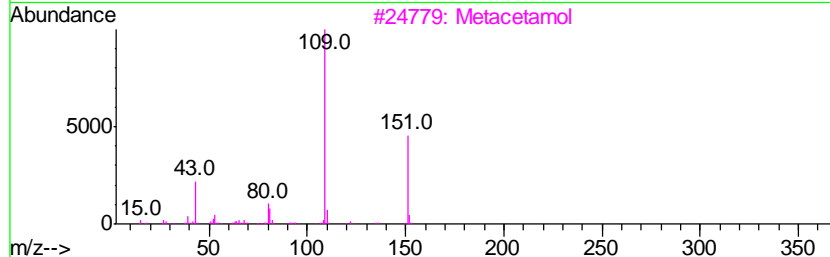
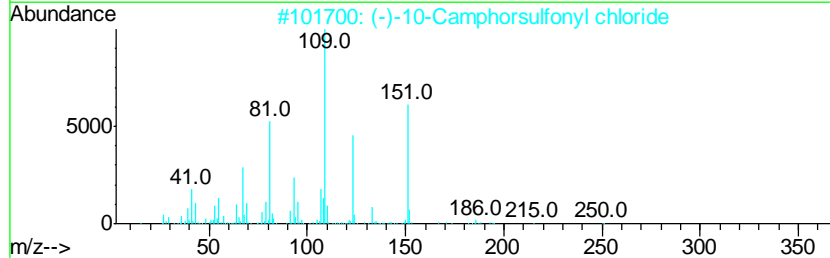
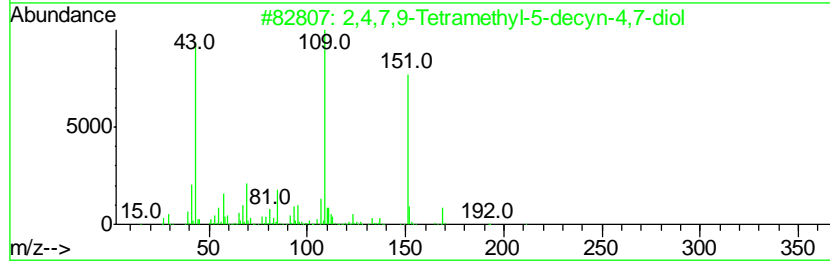
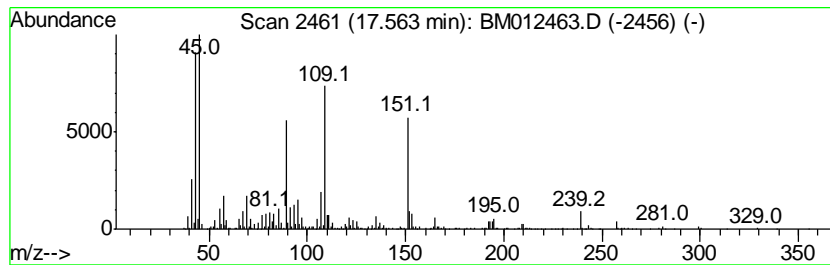
Quant Method : Z:\HPCHEM1\BNA M\METHODS\SOM-EPA-BM102417.M
 Quant Title : SVOA CALIBRATION

TIC Library : C:\DATABASE\NIST11.L
 TIC Integration Parameters: LSCINT.P

 Peak Number 7 unknown-01 Concentration Rank 11

R.T.	EstConc	Area	Relative to ISTD	R.T.
17.56	2.54 ng/ul	1128770	Phenanthrene-d10	17.25

Hit#	of	Tentative ID	MW	MolForm	CAS#	Qual
1	5	2,4,7,9-Tetramethyl-5-decyn-4,7-...	226	C14H26O2	000126-86-3	43
2		(-)-10-Camphorsulfonyl chloride	250	C10H15ClO3S	039262-22-1	35
3		Metacetamol	151	C8H9NO2	000621-42-1	27
4		Metacetamol	151	C8H9NO2	000621-42-1	27
5		Pyridine, 4-methoxy-	109	C6H7NO	000620-08-6	22



Data Path : Z:\HPCHEM1\BNA M\DATA\BM102517\
 Data File : BM012463.D
 Acq On : 26 Oct 2017 02:38
 Operator : SJ/JU
 Sample : I5873-02 2X
 Misc :
 ALS Vial : 26 Sample Multiplier: 1

Instrument :
 BNA_M
 ClientSampleId :
 B-13(0-1)_101117

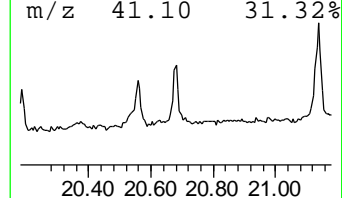
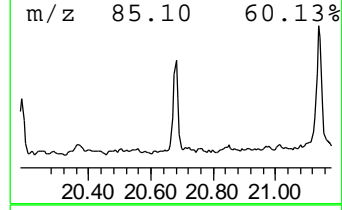
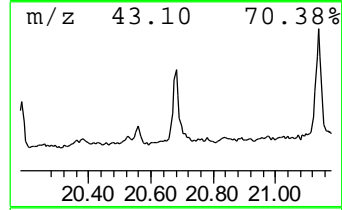
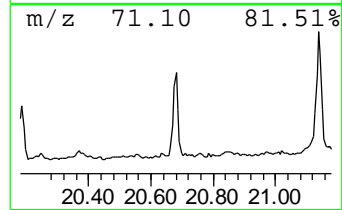
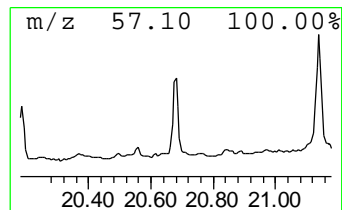
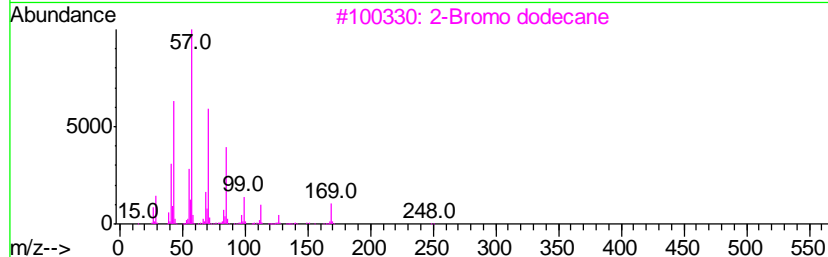
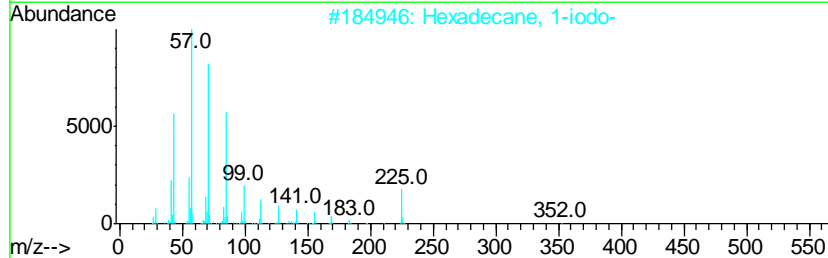
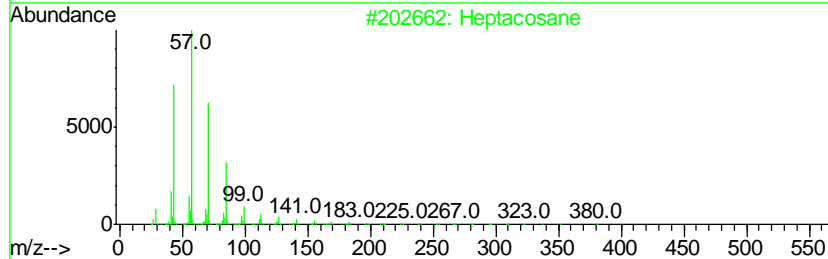
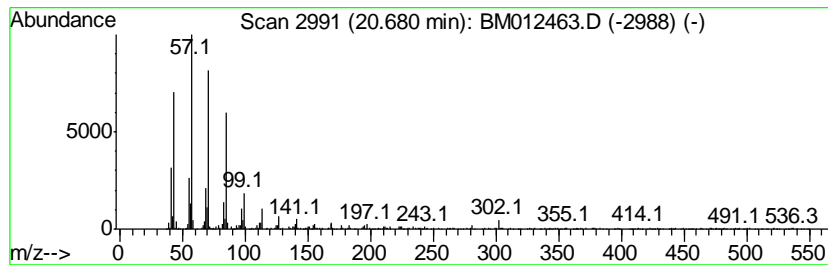
Quant Method : Z:\HPCHEM1\BNA M\METHODS\SOM-EPA-BM102417.M
 Quant Title : SVOA CALIBRATION

TIC Library : C:\DATABASE\NIST11.L
 TIC Integration Parameters: LSCINT.P

 Peak Number 8 (DEL) Alkane: Straight-Chai... Concentration Rank 12

R.T.	EstConc	Area	Relative to ISTD	R.T.
20.68	2.05 ng/ul	958701	Chrysene-d12	21.42

Hit#	of	Tentative ID	MW	MolForm	CAS#	Qual
1	5	Heptacosane	380	C27H56	000593-49-7	93
2		Hexadecane, 1-iodo-	352	C16H33I	000544-77-4	91
3		2-Bromo dodecane	248	C12H25Br	013187-99-0	91
4		Docosane, 9-butyl-	366	C26H54	055282-14-9	87
5		Docosane, 11-butyl-	366	C26H54	013475-76-8	87



Data Path : Z:\HPCHEM1\BNA M\DATA\BM102517\
 Data File : BM012463.D
 Acq On : 26 Oct 2017 02:38
 Operator : SJ/JU
 Sample : I5873-02 2X
 Misc :
 ALS Vial : 26 Sample Multiplier: 1

Instrument :
 BNA_M
 ClientSampleId :
 B-13(0-1)_101117

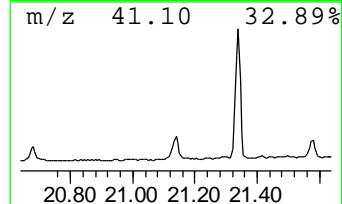
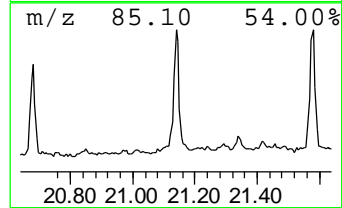
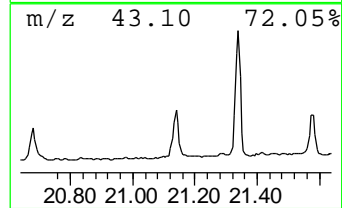
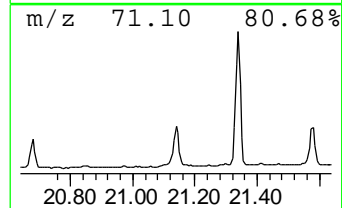
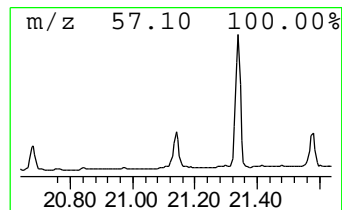
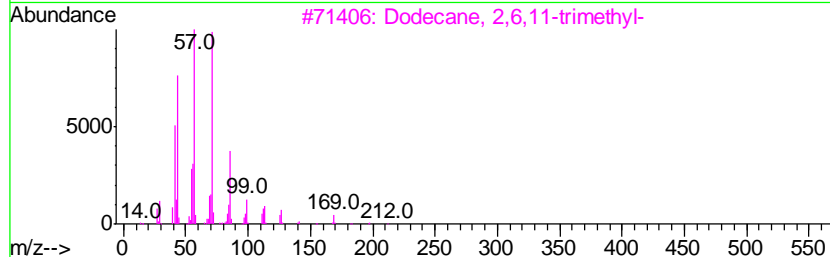
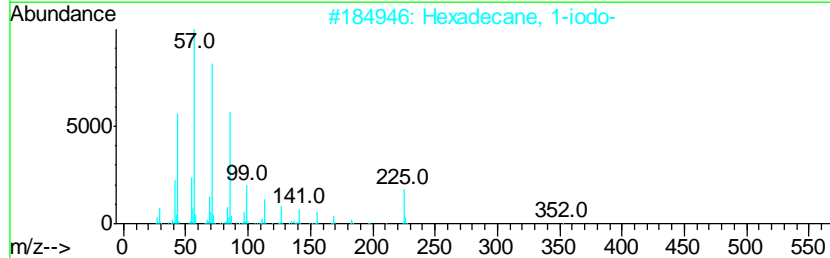
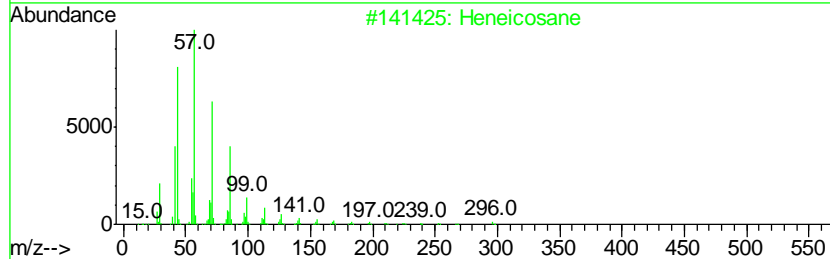
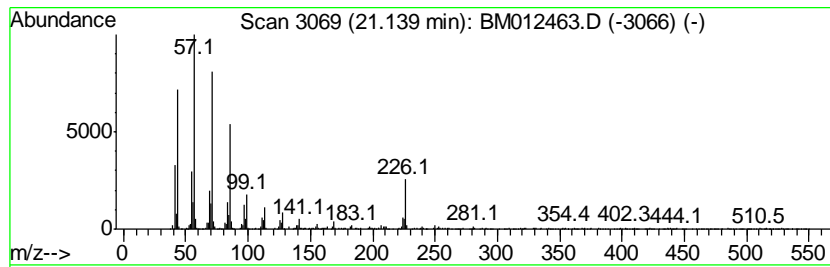
Quant Method : Z:\HPCHEM1\BNA M\METHODS\SOM-EPA-BM102417.M
 Quant Title : SVOA CALIBRATION

TIC Library : C:\DATABASE\NIST11.L
 TIC Integration Parameters: LSCINT.P

 Peak Number 9 (DEL) Alkane: Straight-Chai... Concentration Rank 5

R.T.	EstConc	Area	Relative to ISTD	R.T.
21.14	3.65 ng/ul	1706910	Chrysene-d12	21.42

Hit#	of	Tentative ID	MW	MolForm	CAS#	Qual
1	5	Heneicosane	296	C21H44	000629-94-7	90
2		Hexadecane, 1-iodo-	352	C16H33I	000544-77-4	89
3		Dodecane, 2,6,11-trimethyl-	212	C15H32	031295-56-4	78
4		Hexacosane	366	C26H54	000630-01-3	76
5		Eicosane	282	C20H42	000112-95-8	76



Data Path : Z:\HPCHEM1\BNA M\DATA\BM102517\
 Data File : BM012463.D
 Acq On : 26 Oct 2017 02:38
 Operator : SJ/JU
 Sample : I5873-02 2X
 Misc :
 ALS Vial : 26 Sample Multiplier: 1

Instrument :
 BNA_M
 ClientSampleId :
 B-13(0-1)_101117

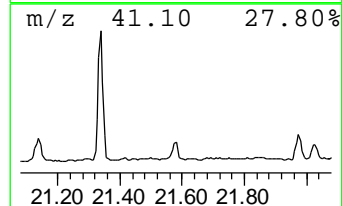
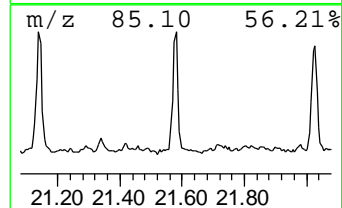
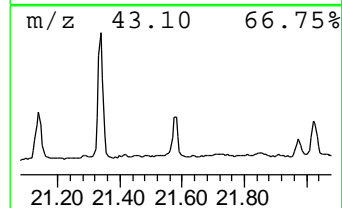
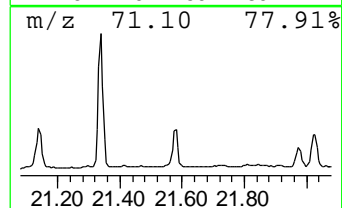
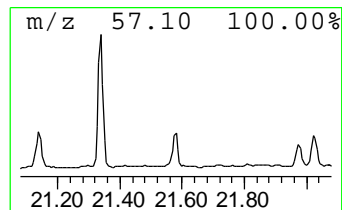
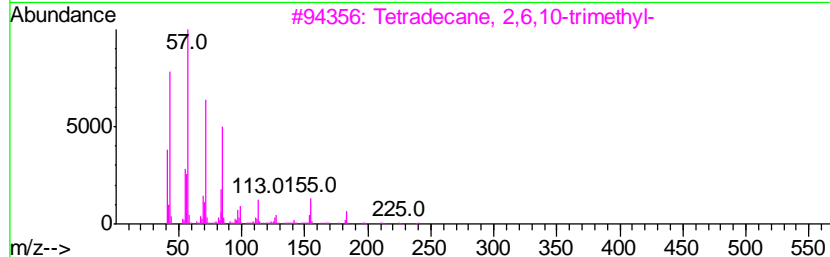
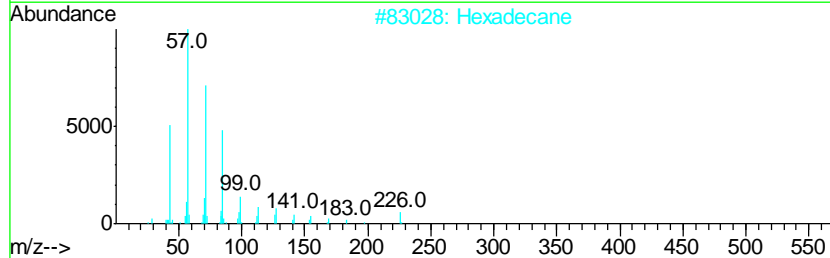
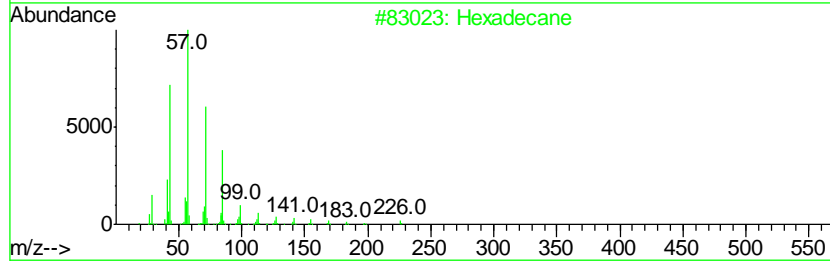
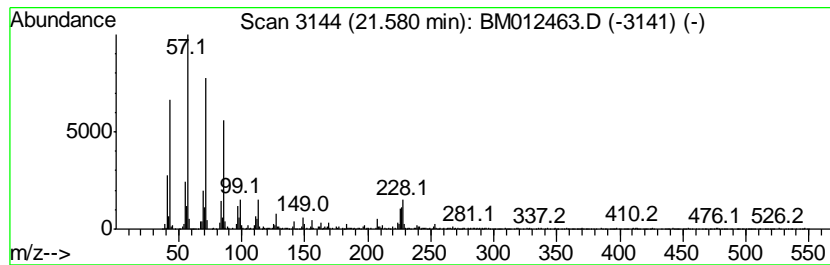
Quant Method : Z:\HPCHEM1\BNA M\METHODS\SOM-EPA-BM102417.M
 Quant Title : SVOA CALIBRATION

TIC Library : C:\DATABASE\NIST11.L
 TIC Integration Parameters: LSCINT.P

 Peak Number 10 (DEL) Alkane: Straight-Chai... Concentration Rank 7

R.T.	EstConc	Area	Relative to ISTD	R.T.
21.58	2.87 ng/ul	1340510	Chrysene-d12	21.42

Hit#	of	Tentative ID	MW	MolForm	CAS#	Qual
1	5	Hexadecane	226	C16H34	000544-76-3	90
2		Hexadecane	226	C16H34	000544-76-3	90
3		Tetradecane, 2,6,10-trimethyl-	240	C17H36	014905-56-7	90
4		Eicosane, 9-octyl-	394	C28H58	013475-77-9	89
5		Heptadecane	240	C17H36	000629-78-7	89



Data Path : Z:\HPCHEM1\BNA M\DATA\BM102517\
 Data File : BM012463.D
 Acq On : 26 Oct 2017 02:38
 Operator : SJ/JU
 Sample : I5873-02 2X
 Misc :
 ALS Vial : 26 Sample Multiplier: 1

Instrument :
 BNA_M
 ClientSampleId :
 B-13(0-1)_101117

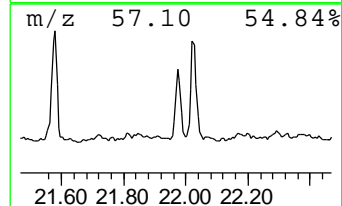
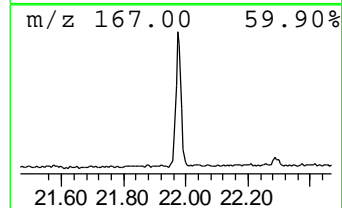
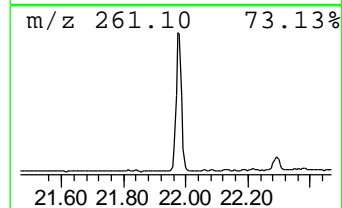
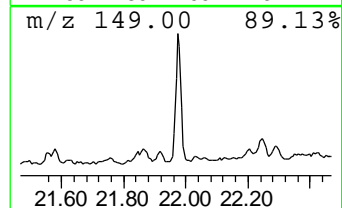
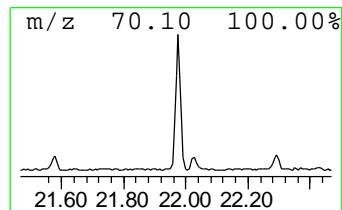
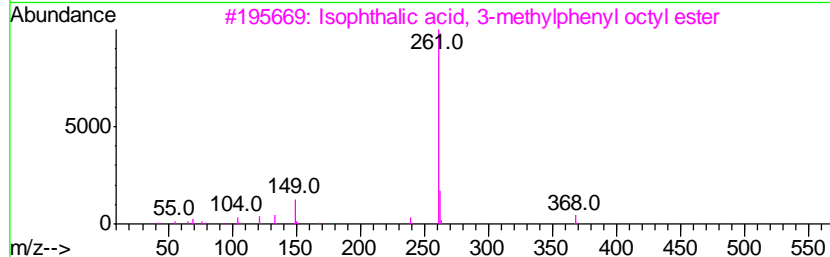
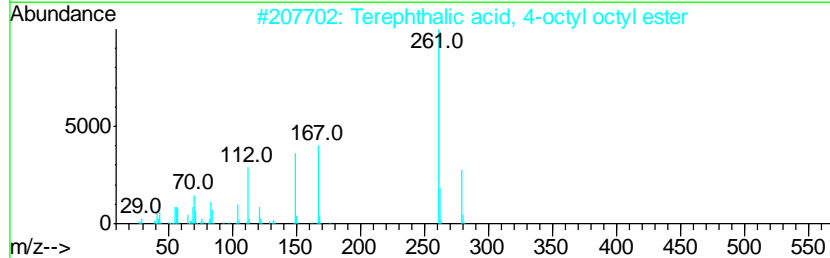
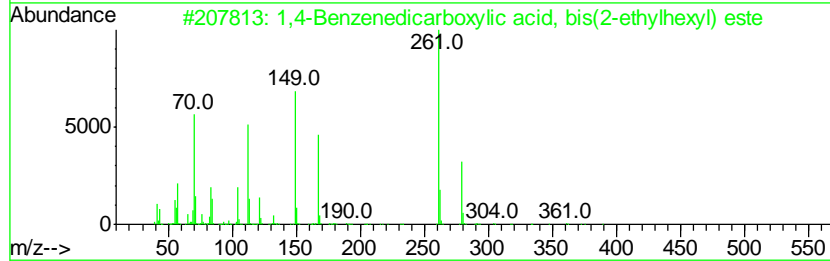
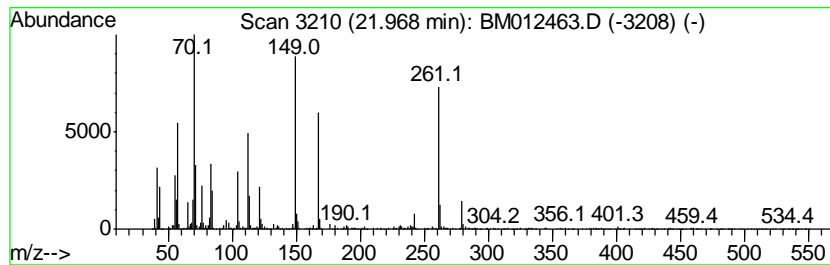
Quant Method : Z:\HPCHEM1\BNA M\METHODS\SOM-EPA-BM102417.M
 Quant Title : SVOA CALIBRATION

TIC Library : C:\DATABASE\NIST11.L
 TIC Integration Parameters: LSCINT.P

 Peak Number 11 1,4-Benzenedicarboxylic aci... Concentration Rank 4

R.T.	EstConc	Area	Relative to ISTD	R.T.
21.97	5.75 ng/ul	2688210	Chrysene-d12	21.42

Hit#	of	Tentative ID	MW	MolForm	CAS#	Qual
1	5	1,4-Benzenedicarboxylic acid, bi...	390	C24H38O4	006422-86-2	64
2		Terephthalic acid, 4-octyl octyl...	390	C24H38O4	1000323-73-7	53
3		Isophthalic acid, 3-methylphenyl...	368	C23H28O4	1000344-52-1	50
4		Isophthalic acid, di(4-octyl) ester	390	C24H38O4	1000344-04-3	43
5		1,2-Benzenedicarboxylic acid, mo...	278	C16H22O4	004376-20-9	35



Data Path : Z:\HPCHEM1\BNA M\DATA\BM102517\
 Data File : BM012463.D
 Acq On : 26 Oct 2017 02:38
 Operator : SJ/JU
 Sample : I5873-02 2X
 Misc :
 ALS Vial : 26 Sample Multiplier: 1

Instrument :
 BNA_M
 ClientSampleId :
 B-13(0-1)_101117

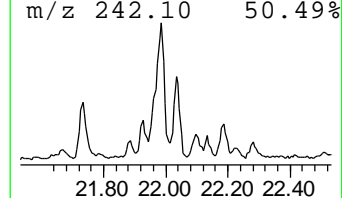
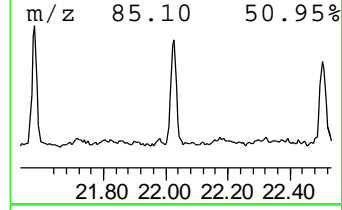
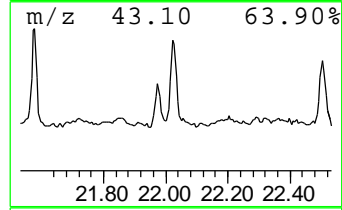
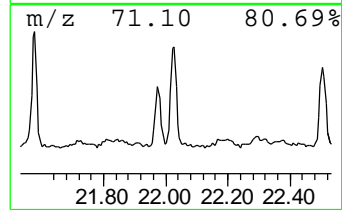
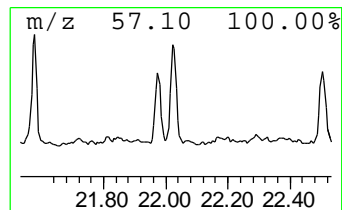
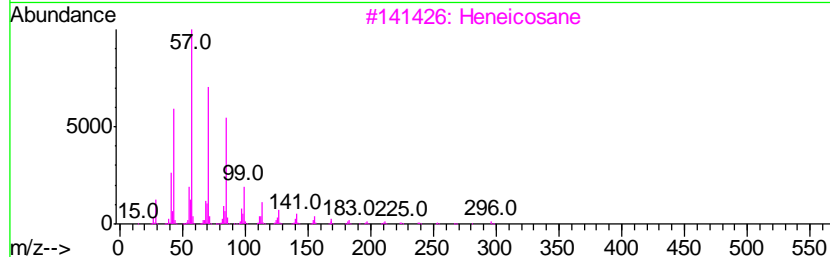
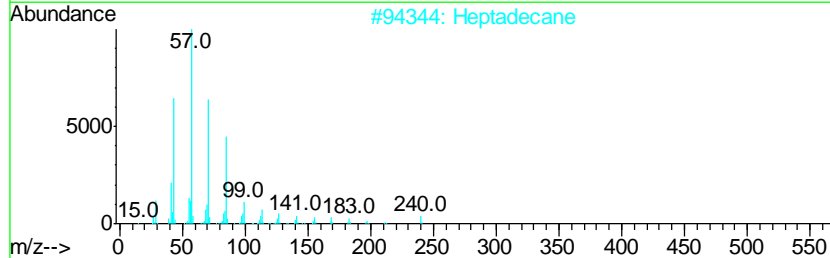
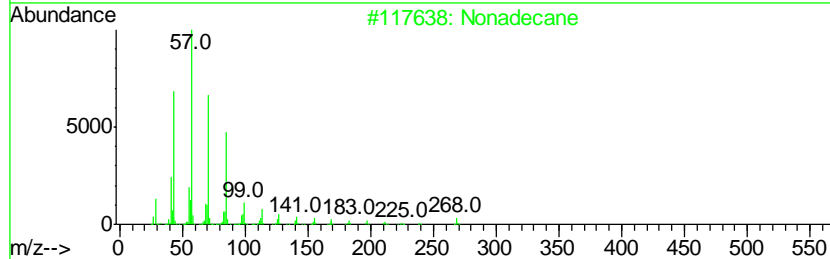
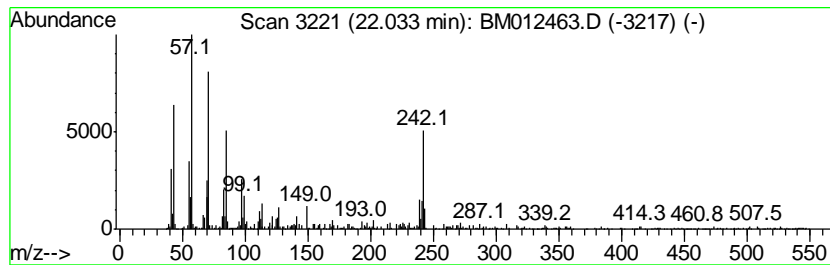
Quant Method : Z:\HPCHEM1\BNA M\METHODS\SOM-EPA-BM102417.M
 Quant Title : SVOA CALIBRATION

TIC Library : C:\DATABASE\NIST11.L
 TIC Integration Parameters: LSCINT.P

 Peak Number 12 (DEL) Alkane: Straight-Chai... Concentration Rank 9

R.T.	EstConc	Area	Relative to ISTD	R.T.
22.03	2.85 ng/ul	1331740	Chrysene-d12	21.42

Hit#	of	Tentative ID	MW	MolForm	CAS#	Qual
1	5	Nonadecane	268	C19H40	000629-92-5	94
2		Heptadecane	240	C17H36	000629-78-7	93
3		Heneicosane	296	C21H44	000629-94-7	87
4		Tetracosane	338	C24H50	000646-31-1	87
5		Tetradecane, 2,6,10-trimethyl-	240	C17H36	014905-56-7	87



Data Path : Z:\HPCHEM1\BNA_M\DATA\BM102517\
 Data File : BM012463.D
 Acq On : 26 Oct 2017 02:38
 Operator : SJ/JU
 Sample : I5873-02 2X
 Misc :
 ALS Vial : 26 Sample Multiplier: 1

Instrument :
 BNA_M
 ClientSampleId :
 B-13(0-1)_101117

Quant Method : Z:\HPCHEM1\BNA_M\METHODS\SOM-EPA-BM102417.M
 Quant Title : SVOA CALIBRATION

TIC Library : C:\DATABASE\NIST11.L
 TIC Integration Parameters: LSCINT.P

TIC Top Hit name	RT	EstConc	Units	Response	--Internal Standard--			
					#	RT	Resp	Conc
Propanoic acid, 2...	15.32	10.5	ng/ul	3929350	3	14.51	7504850	20.0
unknown-01	17.56	2.5	ng/ul	1128770	4	17.25	8891640	20.0
(DEL) Alkane: Str...	20.68	2.0	ng/ul	958701	5	21.42	9352860	20.0
(DEL) Alkane: Str...	21.14	3.6	ng/ul	1706910	5	21.42	9352860	20.0
(DEL) Alkane: Str...	21.58	2.9	ng/ul	1340510	5	21.42	9352860	20.0
1,4-Benzenedicarb...	21.97	5.8	ng/ul	2688210	5	21.42	9352860	20.0
(DEL) Alkane: Str...	22.03	2.9	ng/ul	1331740	5	21.42	9352860	20.0