

Data Path : Z:\HPCHEM1\BNA M\DATA\BM102717\  
 Data File : BM012478.D  
 Acq On : 27 Oct 2017 09:42  
 Operator : SJ/JU  
 Sample : I5786-14  
 Misc :  
 ALS Vial : 3 Sample Multiplier: 1

Instrument :  
 BNA\_M  
 ClientSampled :

Quant Time: Oct 28 00:14:57 2017  
 Quant Method : Z:\HPCHEM1\BNA M\METHODS\SOM-EPA-BM102417.M  
 Quant Title : SVOA CALIBRATION  
 QLast Update : Thu Oct 26 09:35:31 2017  
 Response via : Initial Calibration

Internal Standards	R.T.	QIon	Response	Conc	Units	Dev(Min)
1) 1,4-Dichlorobenzene-d4	7.87	152	522326	20.00	ng/ul	0.00
18) Naphthalene-d8	10.66	136	2147709	20.00	ng/ul	-0.01
35) Acenaphthene-d10	14.50	164	1337914	20.00	ng/ul	0.00
61) Phenanthrene-d10	17.24	188	2976694	20.00	ng/ul	-0.01
75) Chrysene-d12	21.41	240	2387669	20.00	ng/ul	-0.01
83) Perylene-d12	23.72	264	2386931	20.00	ng/ul	-0.01

## System Monitoring Compounds

3) 1,4-Dioxane-d8	3.36	96	60421	5.91	ng/uL	0.00
5) Phenol-d5	7.04	99	1273364	29.18	ng/ul	-0.01
7) Bis-(2-Chloroethyl)ether-d	7.20	67	806316	31.13	ng/ul	0.00
9) 2-Chlorophenol-d4	7.40	132	993684	30.40	ng/ul	-0.01
13) 4-Methylphenol-d8	8.57	113	1036456	27.79	ng/ul	-0.01
19) Nitrobenzene-d5	9.03	128	493690	36.70	ng/ul	0.00
22) 2-Nitrophenol-d4	9.75	143	551916	39.83	ng/ul	-0.01
26) 2,4-Dichlorophenol-d3	10.29	165	1105233	30.11	ng/ul	-0.01
29) 4-Chloroaniline-d4	10.80	131	995211	25.71	ng/ul	0.00
43) Dimethylphthalate-d6	13.91	166	3646488	31.20	ng/ul	0.00
46) Acenaphthylene-d8	14.19	160	4445335	32.15	ng/ul	-0.01
51) 4-Nitrophenol-d4	14.69	143	143660	8.27	ng/ul	-0.02
57) Fluorene-d10	15.49	176	3131047	31.65	ng/ul	-0.01
62) 4,6-Dinitro-2-methylphenol	15.60	200	123956	8.60	ng/ul	-0.02
70) Anthracene-d10	17.34	188	4672202	32.94	ng/ul	-0.01
76) Pyrene-d10	19.63	212	4572905	41.75	ng/ul	0.00
87) Benzo(a)pyrene-d12	23.57	264	3776991	33.31	ng/ul	-0.01

## Target Compounds

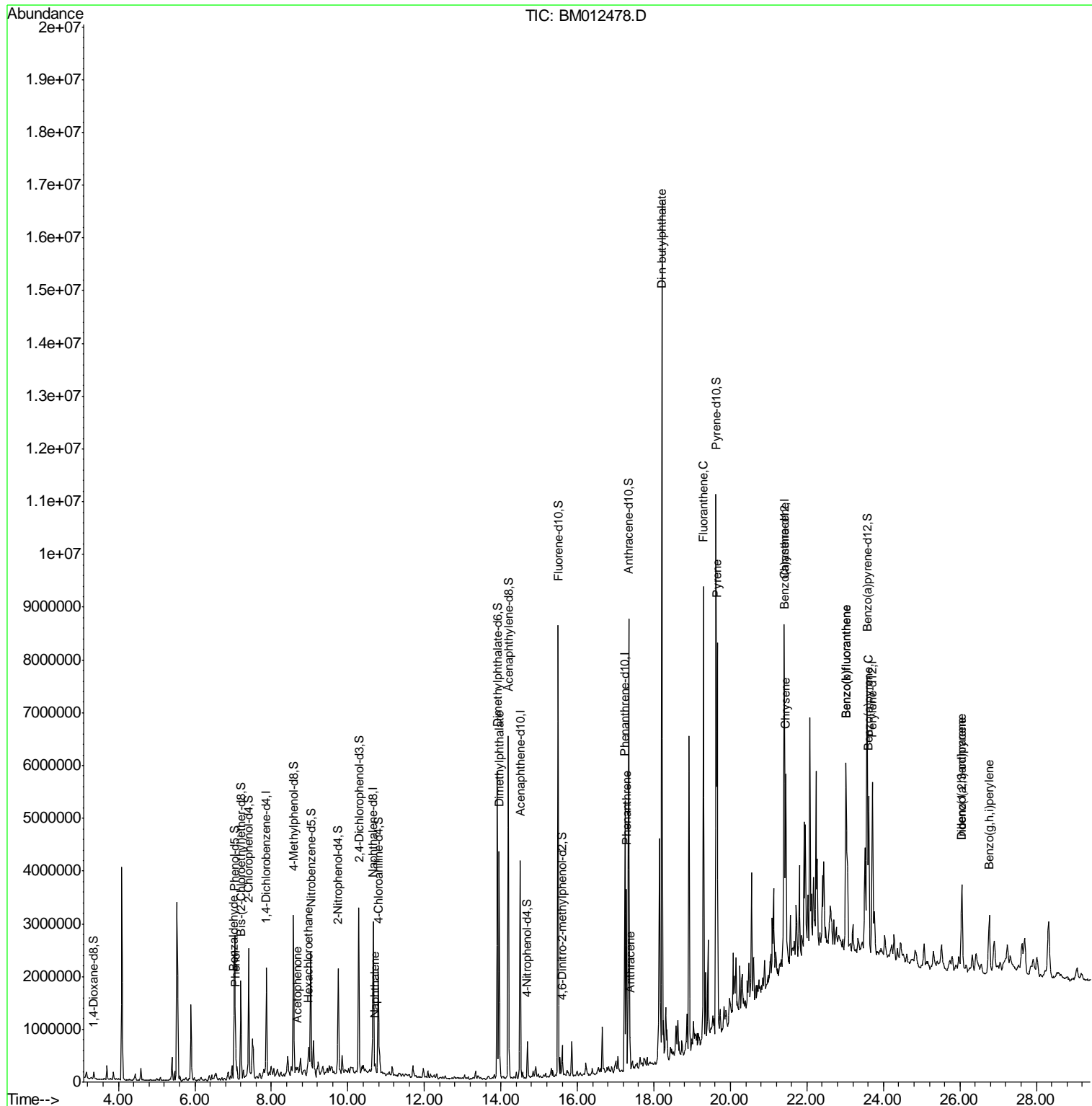
Target Compounds	R.T.	QIon	Response	Conc	Units	Ovalue
4) Benzaldehyde	7.02	77	54919	2.31	ng/ul#	42
6) Phenol	7.06	94	289026	6.36	ng/ul#	86
14) Acetophenone	8.68	105	87238	1.49	ng/ul#	60
17) Hexachloroethane	8.97	117	17725	1.25	ng/ul#	1
28) Naphthalene	10.72	128	132785	1.25	ng/ul	99
44) Dimethylphthalate	13.96	163	2500367	21.63	ng/ul	99
69) Phenanthrene	17.29	178	2109006	13.10	ng/ul	98
71) Anthracene	17.37	178	366881	2.21	ng/ul	98
73) Di-n-butylphthalate	18.21	149	10658418	60.64	ng/ul	97
74) Fluoranthene	19.29	202	4729422	25.93	ng/ul#	92
77) Pyrene	19.66	202	4340744	31.97	ng/ul#	92
80) Benzo(a)anthracene	21.40	228	1859082	13.00	ng/ul	97
82) Chrysene	21.44	228	2129384	16.75	ng/ul	97
85) Benzo(b)fluoranthene	23.02	252	2921204	19.80	ng/ul#	96
86) Benzo(k)fluoranthene	23.02	252	2921204	21.03	ng/ul#	94
88) Benzo(a)pyrene	23.62	252	2042431	14.52	ng/ul#	98
89) Indeno(1,2,3-cd)pyrene	26.05	276	1671594	10.10	ng/ul#	96
90) Dibenzo(a,h)anthracene	26.05	278	412517	2.94	ng/ul#	85
91) Benzo(g,h,i)perylene	26.77	276	1398922	10.43	ng/ul#	94

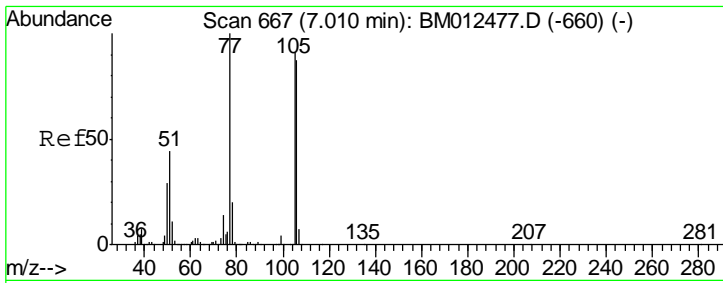
(#) = qualifier out of range (m) = manual integration (+) = signals summed

Data Path : Z:\HPCHEM1\BNA M\DATA\BM102717\  
 Data File : BM012478.D  
 Acq On : 27 Oct 2017 09:42  
 Operator : SJ/JU  
 Sample : I5786-14  
 Misc :  
 ALS Vial : 3 Sample Multiplier: 1

Instrument :  
 BNA\_M  
 ClientSampled :

Quant Time: Oct 28 00:14:57 2017  
 Quant Method : Z:\HPCHEM1\BNA M\METHODS\SOM-EPA-BM102417.M  
 Quant Title : SVOA CALIBRATION  
 QLast Update : Thu Oct 26 09:35:31 2017  
 Response via : Initial Calibration

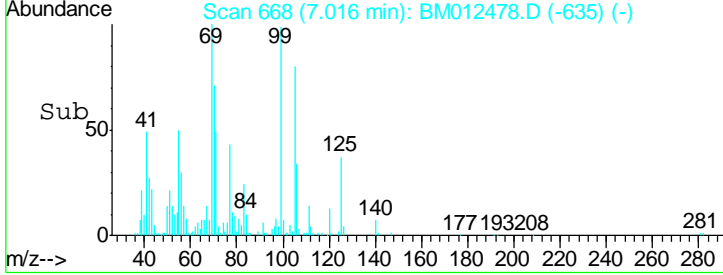
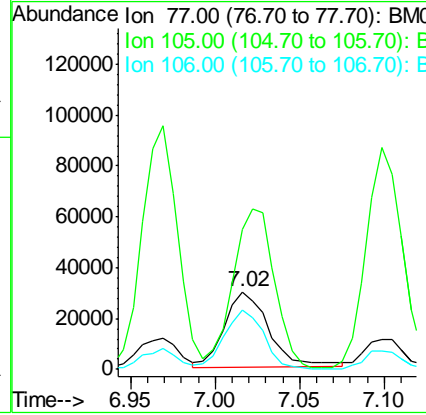
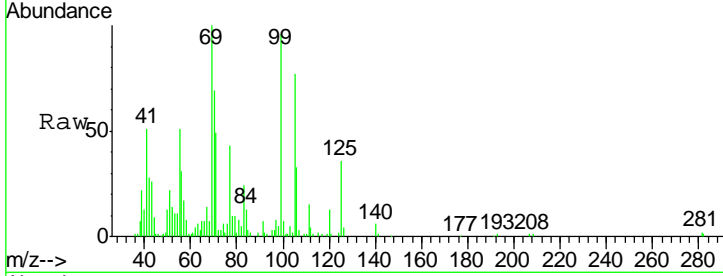




#4  
Benzaldehyde  
Concen: 2.31 ng/ul  
RT: 7.02 min Scan# 668  
Delta R.T. -0.01 min  
Lab File: BM012478.D  
Acq: 27 Oct 2017 09:42

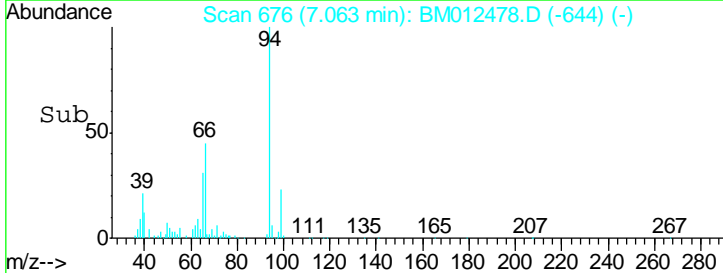
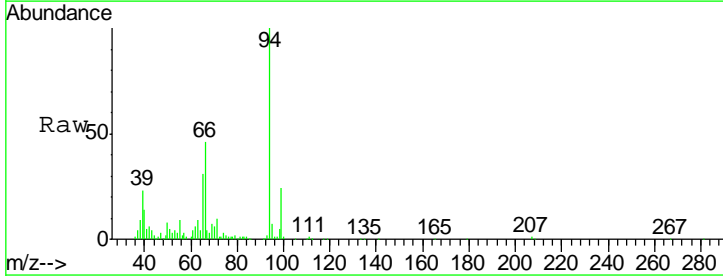
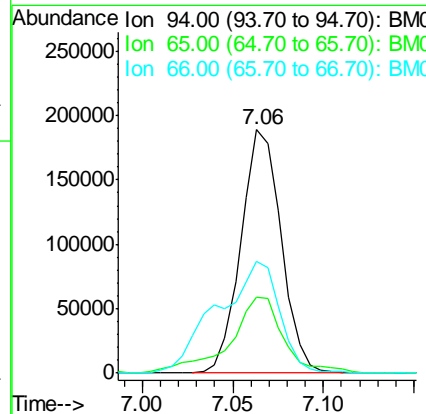
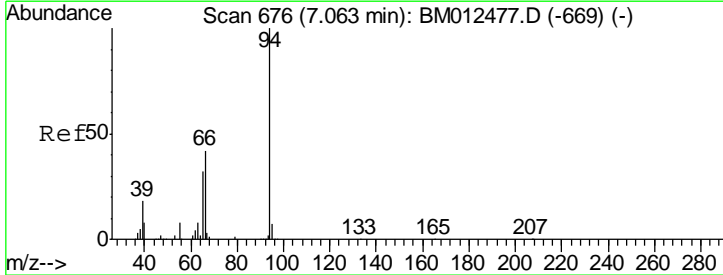
Instrument :  
BNA\_M  
ClientSampled :

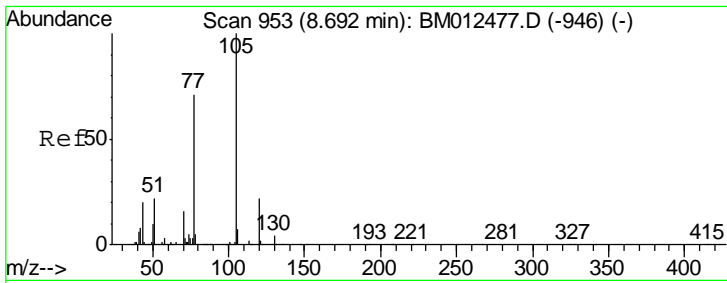
Tgt Ion	Resp	Lower	Upper
77	100		
105	180.2	66.1	99.1#
106	76.2	67.8	101.6



#6  
Phenol  
Concen: 6.36 ng/ul  
RT: 7.06 min Scan# 676  
Delta R.T. -0.01 min  
Lab File: BM012478.D  
Acq: 27 Oct 2017 09:42

Tgt Ion	Resp	Lower	Upper
94	100		
65	31.4	28.2	42.4
66	45.8	47.2	70.8#

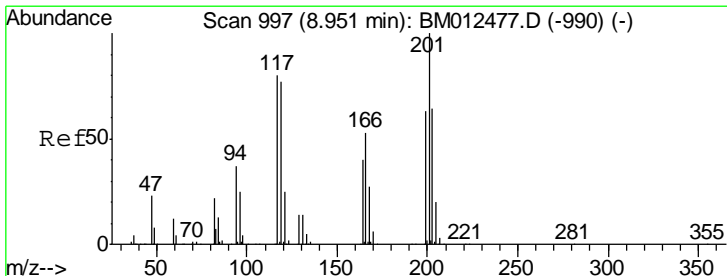
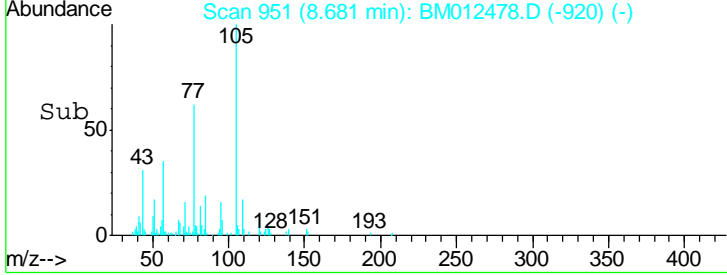
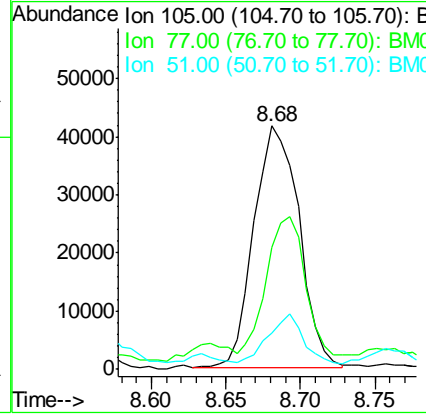
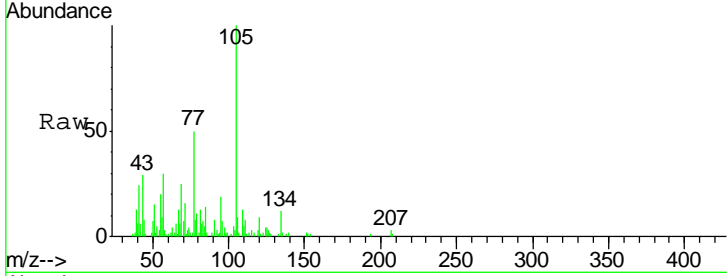




#14  
 Acetophenone  
 Concen: 1.49 ng/ul  
 RT: 8.68 min Scan# 951  
 Delta R.T. -0.02 min  
 Lab File: BM012478.D  
 Acq: 27 Oct 2017 09:42

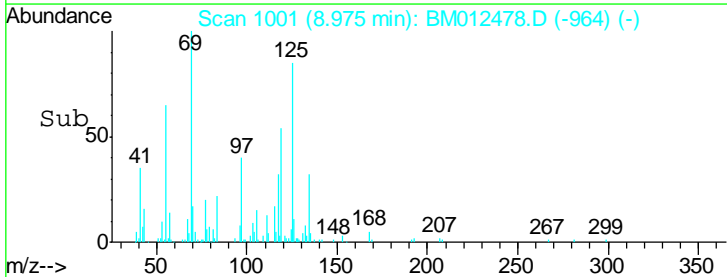
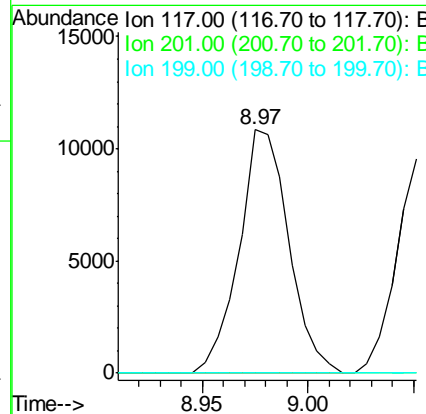
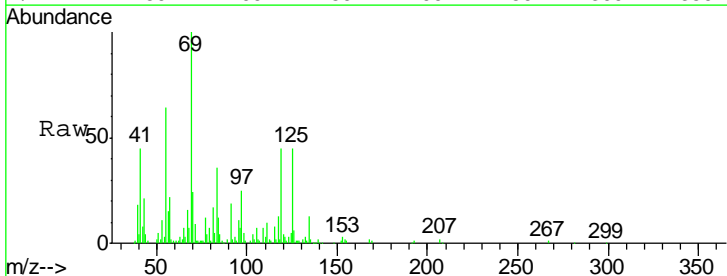
Instrument :  
 BNA\_M  
 ClientSampled :

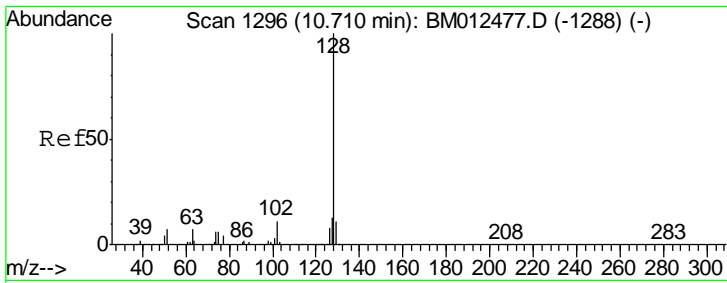
Tgt Ion	Resp	Lower	Upper
105	100		
77	50.2	74.2	111.4#
51	15.1	23.4	35.2#



#17  
 Hexachloroethane  
 Concen: 1.25 ng/ul  
 RT: 8.97 min Scan# 1001  
 Delta R.T. 0.02 min  
 Lab File: BM012478.D  
 Acq: 27 Oct 2017 09:42

Tgt Ion	Resp	Lower	Upper
117	100		
201	0.0	111.6	167.4#
199	0.0	67.8	101.6#

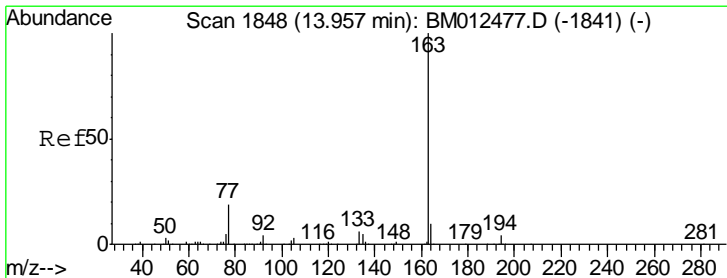
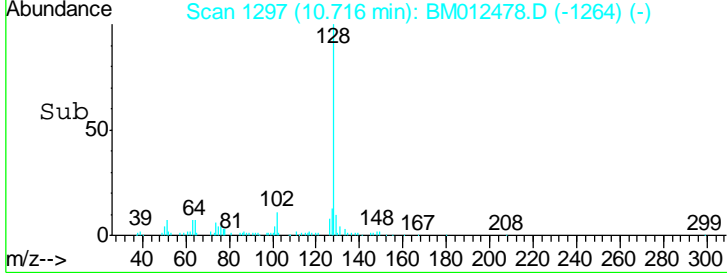
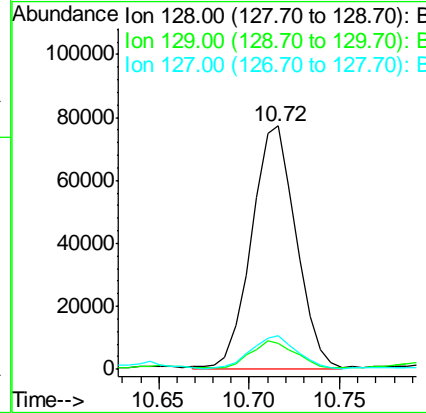
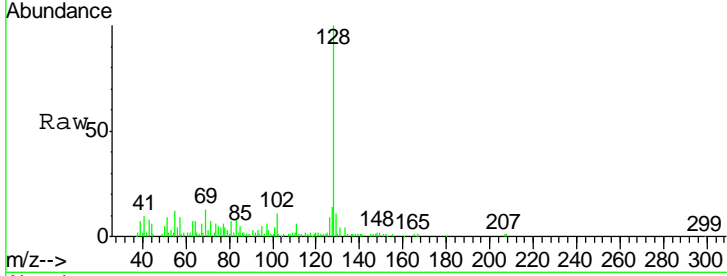




#28  
 Naphthalene  
 Concen: 1.25 ng/ul  
 RT: 10.72 min Scan# 1297  
 Delta R.T. -0.01 min  
 Lab File: BM012478.D  
 Acq: 27 Oct 2017 09:42

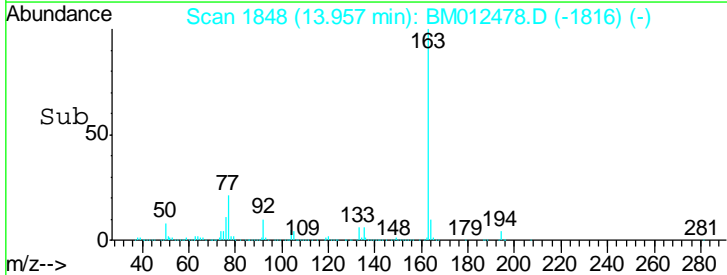
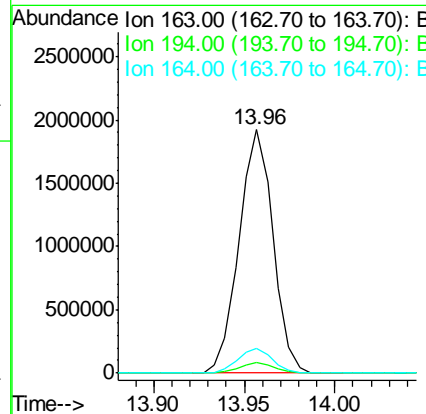
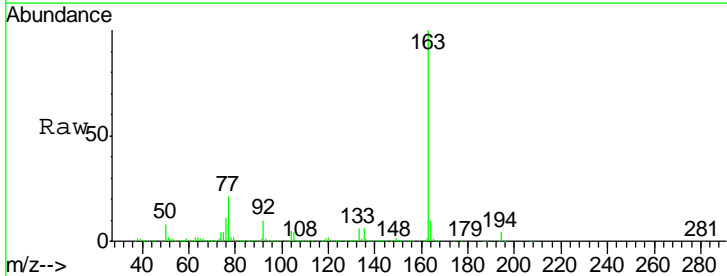
Instrument :  
 BNA\_M  
 ClientSampled :

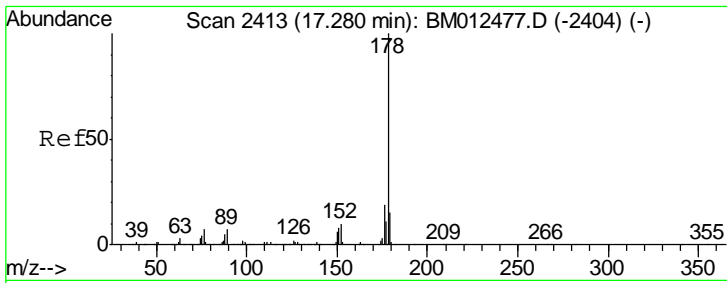
Tgt Ion	Resp	Lower	Upper
128	132785		
129	10.9	8.8	13.2
127	13.8	10.6	16.0



#44  
 Dimethylphthalate  
 Concen: 21.63 ng/ul  
 RT: 13.96 min Scan# 1848  
 Delta R.T. -0.01 min  
 Lab File: BM012478.D  
 Acq: 27 Oct 2017 09:42

Tgt Ion	Resp	Lower	Upper
163	2500367		
194	4.3	3.5	5.3
164	10.0	8.2	12.4

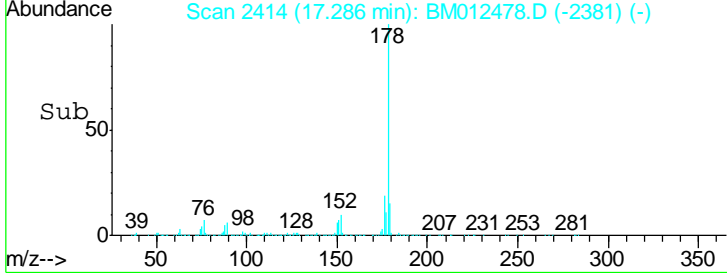
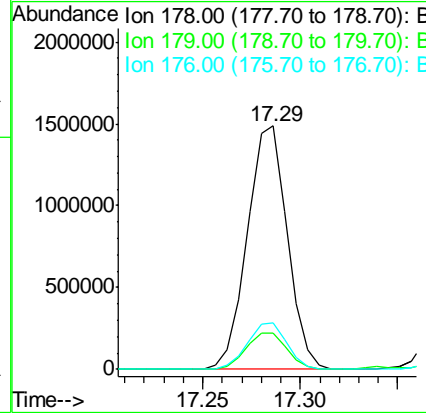
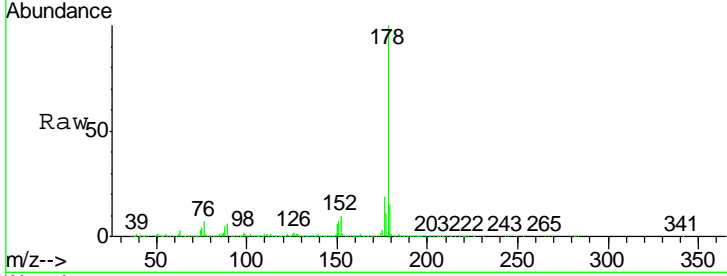




#69  
 Phenanthrene  
 Concen: 13.10 ng/ul  
 RT: 17.29 min Scan# 2414  
 Delta R.T. -0.01 min  
 Lab File: BM012478.D  
 Acq: 27 Oct 2017 09:42

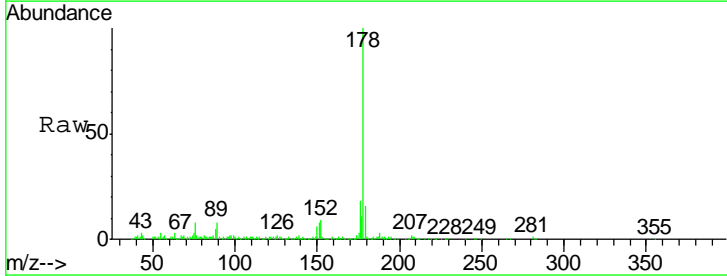
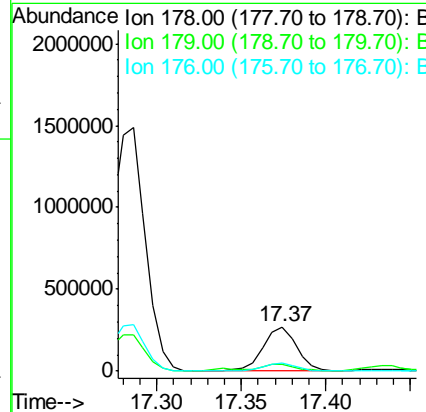
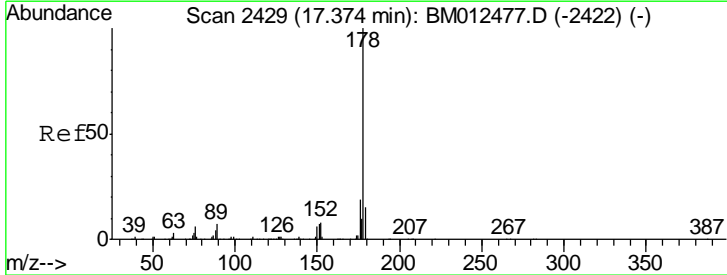
Instrument :  
 BNA\_M  
 ClientSampled :

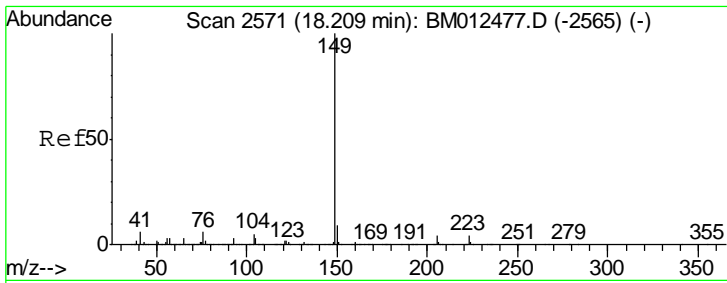
Tgt Ion	Resp	Lower	Upper
178	2109006		
179	14.8	12.6	19.0
176	19.1	14.9	22.3



#71  
 Anthracene  
 Concen: 2.21 ng/ul  
 RT: 17.37 min Scan# 2429  
 Delta R.T. -0.01 min  
 Lab File: BM012478.D  
 Acq: 27 Oct 2017 09:42

Tgt Ion	Resp	Lower	Upper
178	366881		
179	15.8	11.7	17.5
176	17.6	14.6	21.8



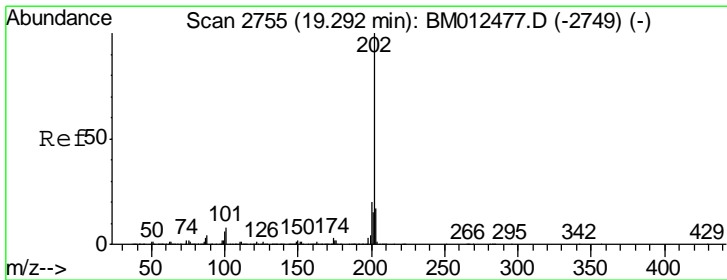
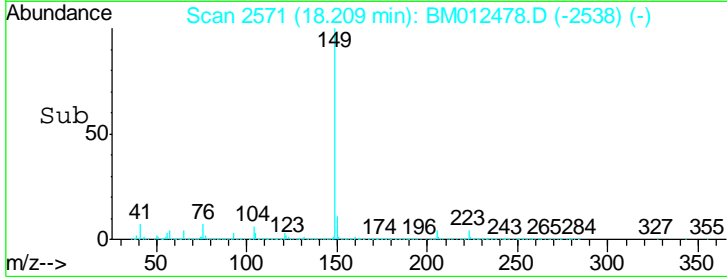
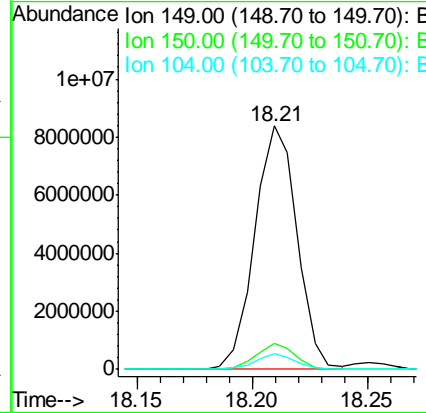
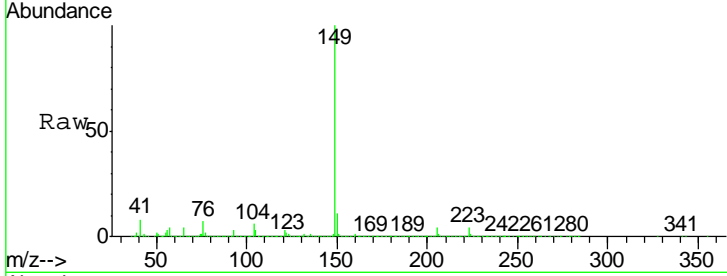


#73  
 Di-n-butylphthalate  
 Concen: 60.64 ng/ul  
 RT: 18.21 min Scan# 2571  
 Delta R.T. -0.01 min  
 Lab File: BM012478.D  
 Acq: 27 Oct 2017 09:42

Instrument :  
 BNA\_M  
 ClientSampled :

Tgt Ion:149 Resp:10658418

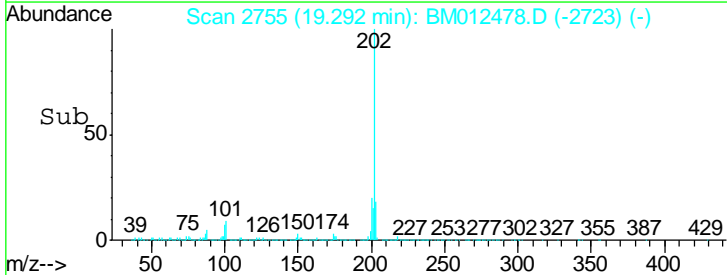
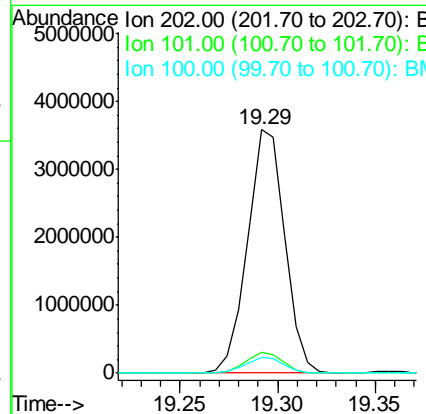
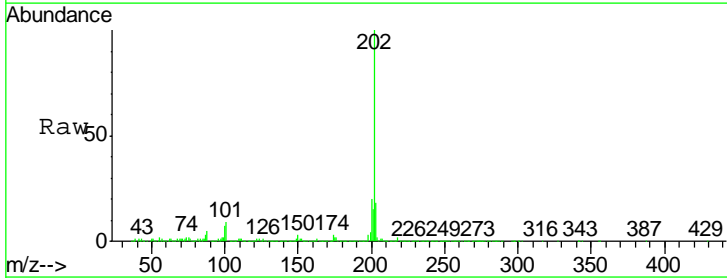
Ion	Ratio	Lower	Upper
149	100		
150	10.5	7.1	10.7
104	6.3	5.6	8.4

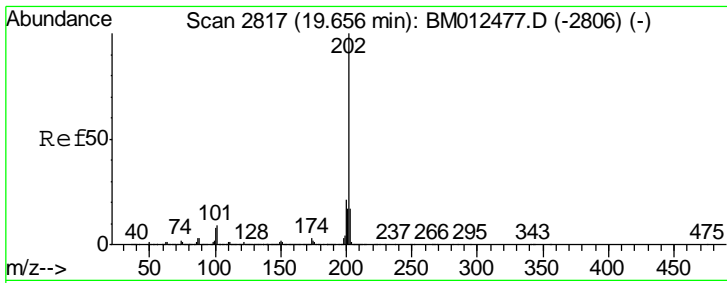


#74  
 Fluoranthene  
 Concen: 25.93 ng/ul  
 RT: 19.29 min Scan# 2755  
 Delta R.T. -0.01 min  
 Lab File: BM012478.D  
 Acq: 27 Oct 2017 09:42

Tgt Ion:202 Resp: 4729422

Ion	Ratio	Lower	Upper
202	100		
101	8.8	4.6	7.0#
100	6.7	3.4	5.2#

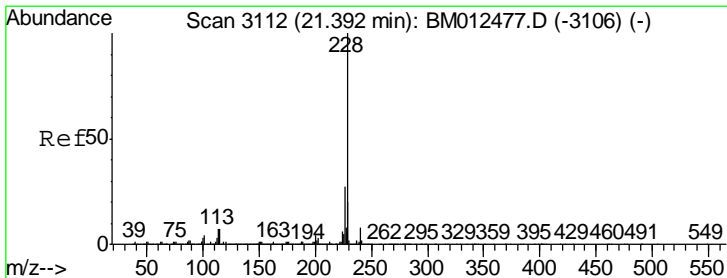
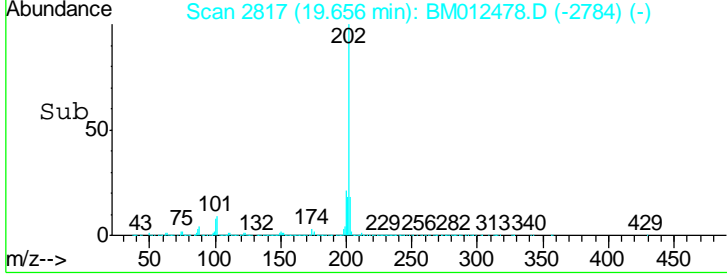
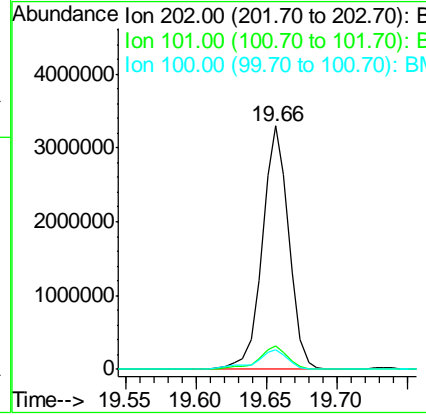
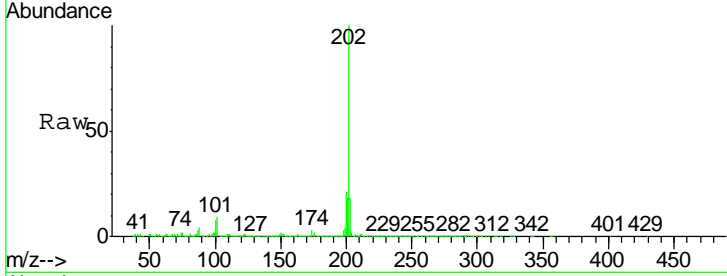




#77  
 Pyrene  
 Concen: 31.97 ng/ul  
 RT: 19.66 min Scan# 2817  
 Delta R.T. -0.01 min  
 Lab File: BM012478.D  
 Acq: 27 Oct 2017 09:42

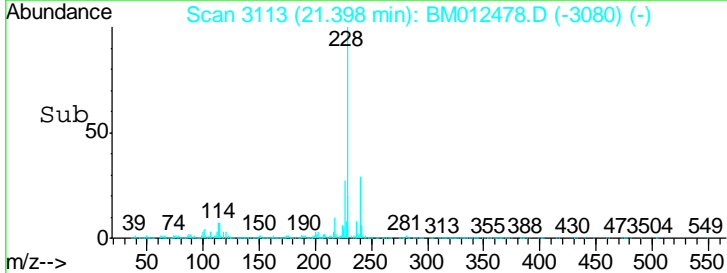
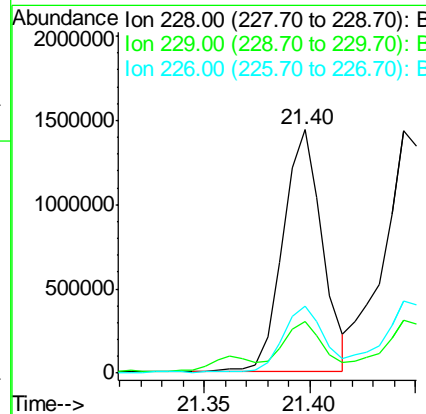
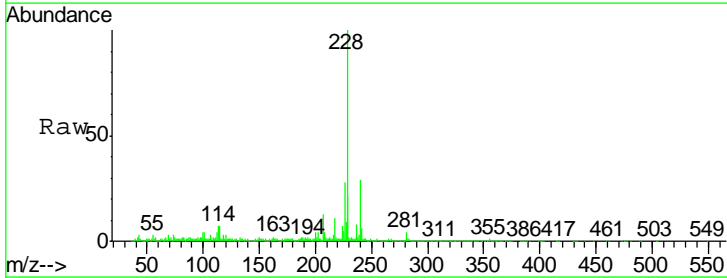
Instrument :  
 BNA\_M  
 ClientSampled :

Tgt Ion	Resp	Lower	Upper
202	4340744		
101	9.4	5.1	7.7#
100	8.2	4.9	7.3#

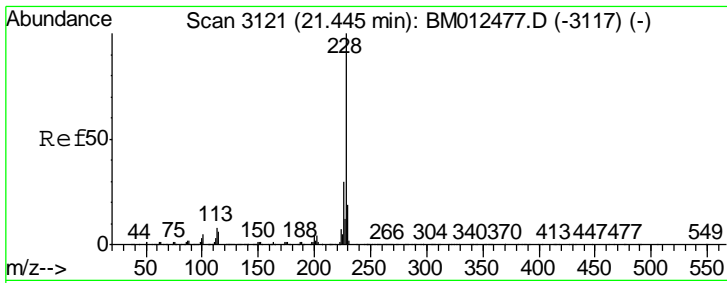


#80  
 Benzo(a)anthracene  
 Concen: 13.00 ng/ul  
 RT: 21.40 min Scan# 3113  
 Delta R.T. -0.01 min  
 Lab File: BM012478.D  
 Acq: 27 Oct 2017 09:42

Tgt Ion	Resp	Lower	Upper
228	1859082		
229	21.0	15.4	23.0
226	27.7	21.4	32.0



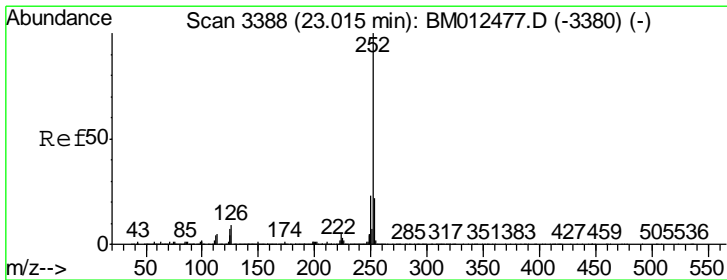
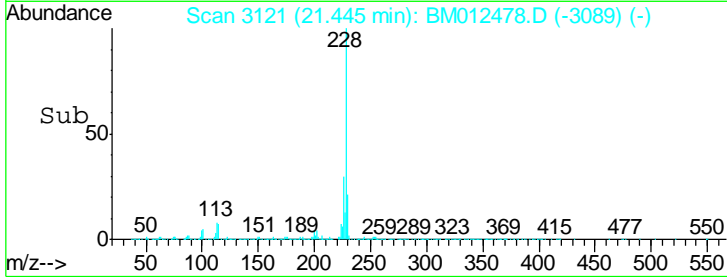
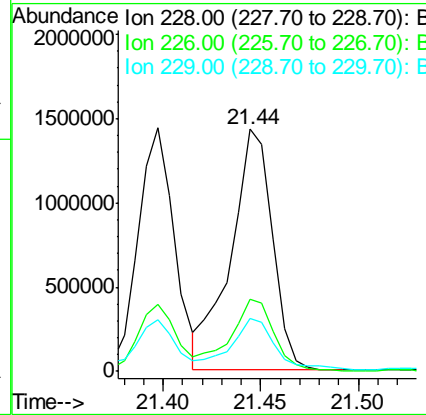
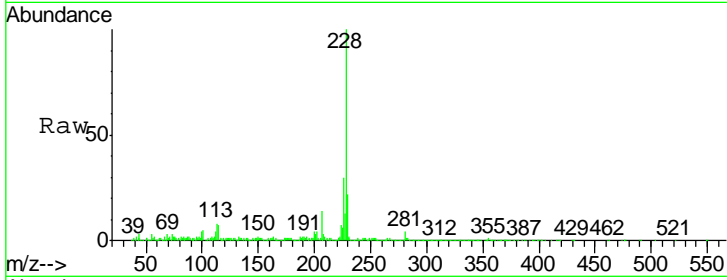




#82  
 Chrysene  
 Concen: 16.75 ng/ul  
 RT: 21.44 min Scan# 3121  
 Delta R.T. -0.01 min  
 Lab File: BM012478.D  
 Acq: 27 Oct 2017 09:42

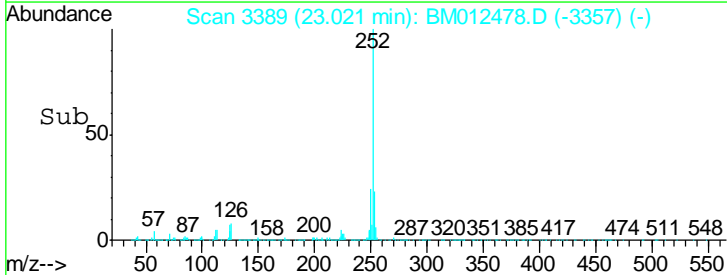
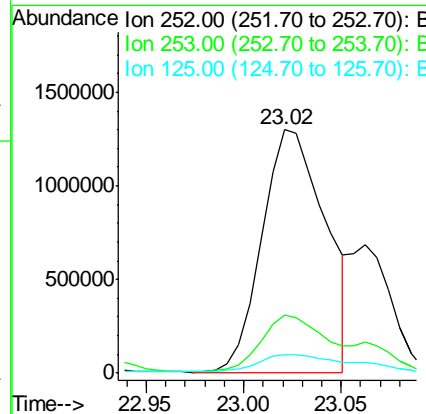
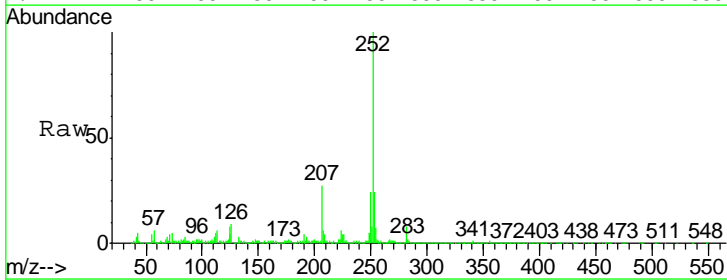
Instrument :  
 BNA\_M  
 ClientSampled :

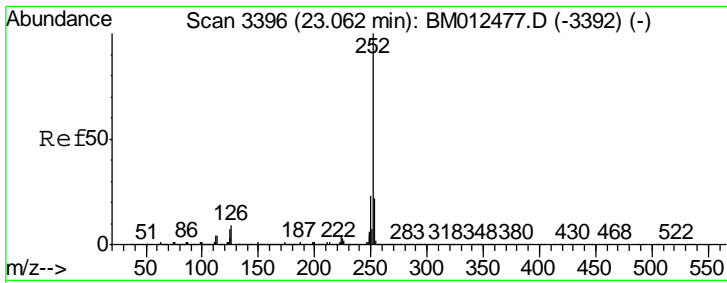
Tgt Ion	Resp	Lower	Upper
228	2129384		
226	30.0	23.4	35.2
229	21.6	15.5	23.3



#85  
 Benzo(b)fluoranthene  
 Concen: 19.80 ng/ul  
 RT: 23.02 min Scan# 3389  
 Delta R.T. -0.01 min  
 Lab File: BM012478.D  
 Acq: 27 Oct 2017 09:42

Tgt Ion	Resp	Lower	Upper
252	2921204		
253	23.6	17.9	26.9
125	7.6	3.6	5.4#



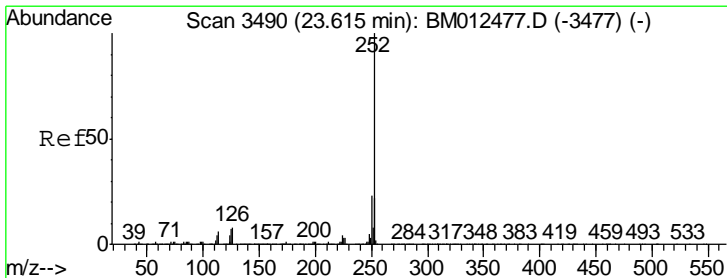
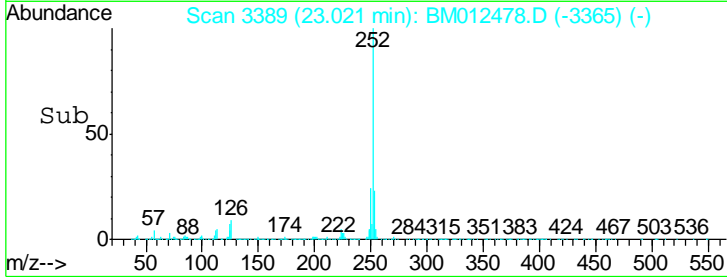
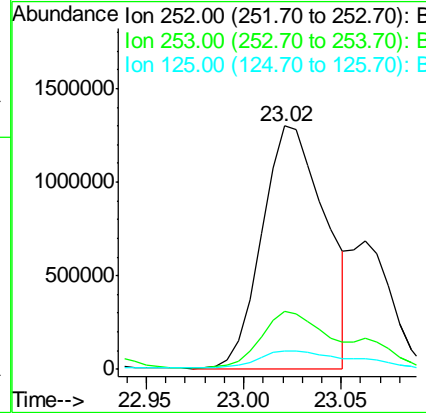
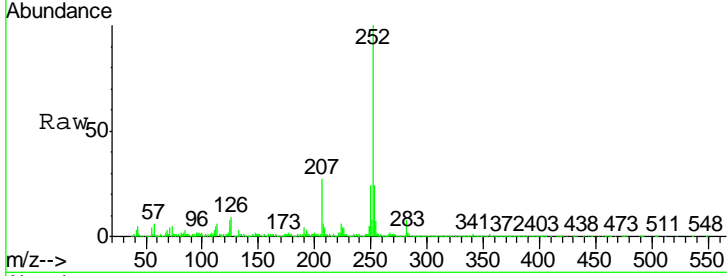


#86  
 Benzo(k)fluoranthene  
 Concen: 21.03 ng/ul  
 RT: 23.02 min Scan# 3389  
 Delta R.T. -0.06 min  
 Lab File: BM012478.D  
 Acq: 27 Oct 2017 09:42

Instrument :  
 BNA\_M  
 ClientSampled :

Tgt Ion: 252 Resp: 2921204

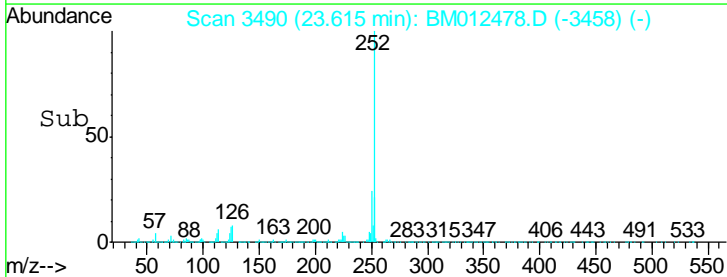
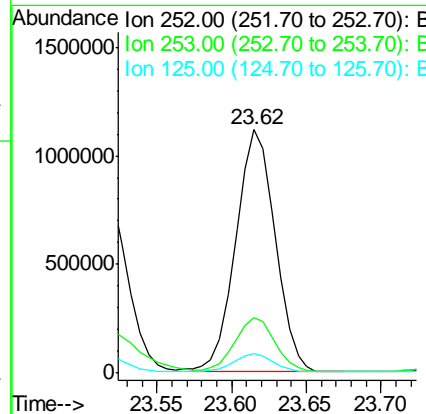
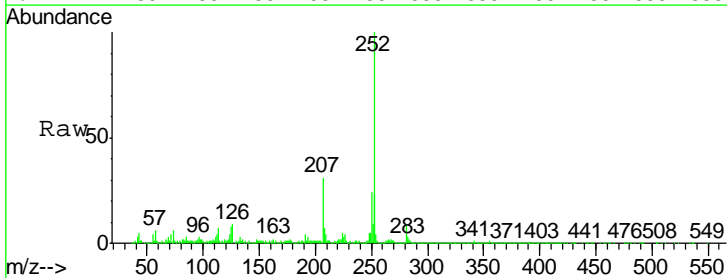
Ion	Ratio	Lower	Upper
252	100		
253	23.6	17.1	25.7
125	7.6	3.4	5.2#

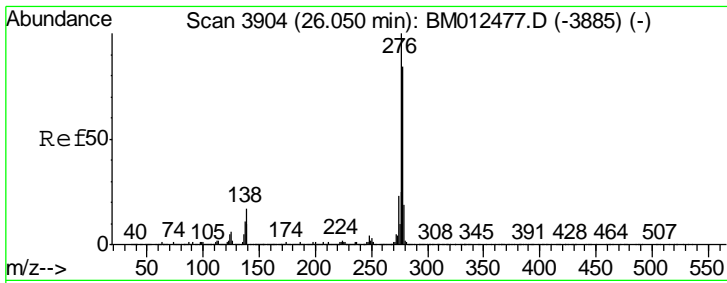


#88  
 Benzo(a)pyrene  
 Concen: 14.52 ng/ul  
 RT: 23.62 min Scan# 3490  
 Delta R.T. -0.01 min  
 Lab File: BM012478.D  
 Acq: 27 Oct 2017 09:42

Tgt Ion: 252 Resp: 2042431

Ion	Ratio	Lower	Upper
252	100		
253	22.8	18.2	27.2
125	7.8	4.0	6.0#

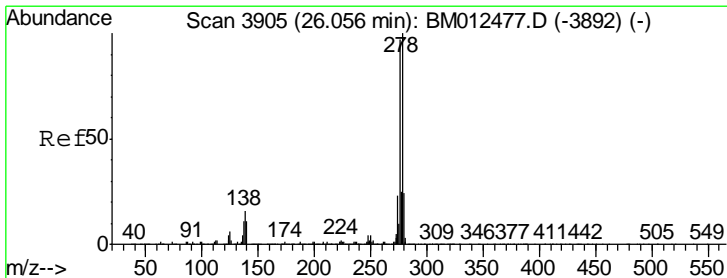
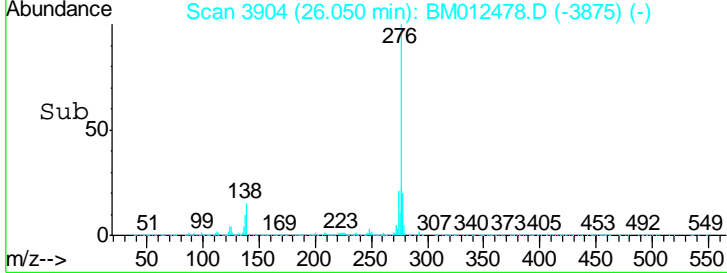
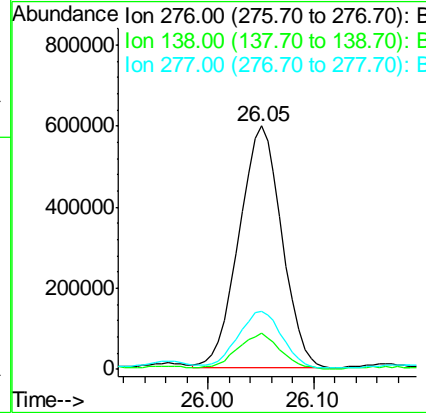
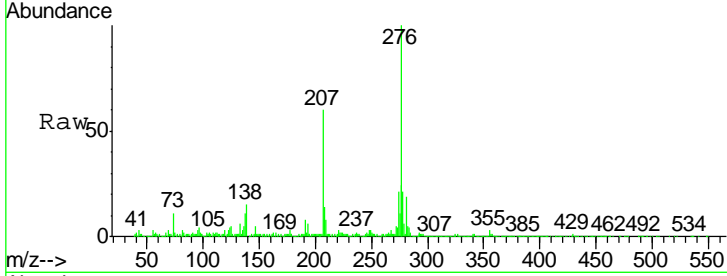




#89  
 Indeno(1,2,3-cd)pyrene  
 Concen: 10.10 ng/ul  
 RT: 26.05 min Scan# 3904  
 Delta R.T. -0.03 min  
 Lab File: BM012478.D  
 Acq: 27 Oct 2017 09:42

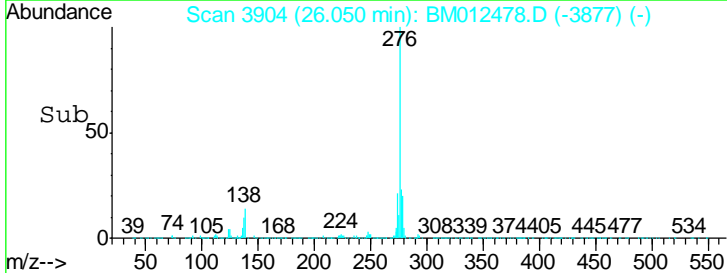
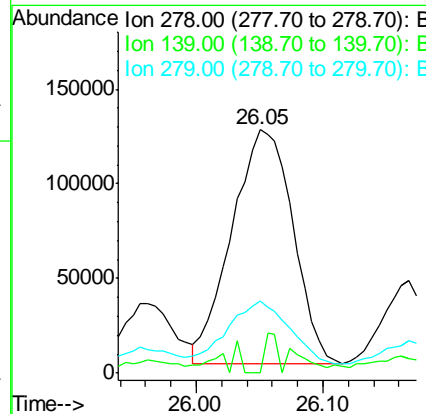
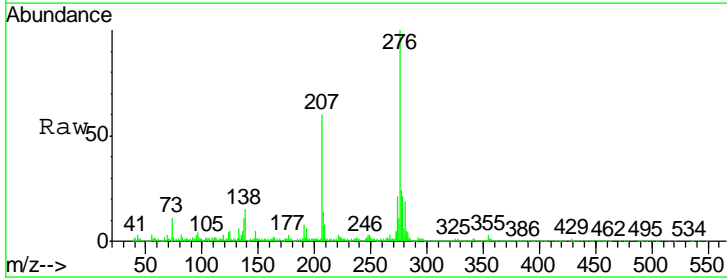
Instrument :  
 BNA\_M  
 ClientSampled :

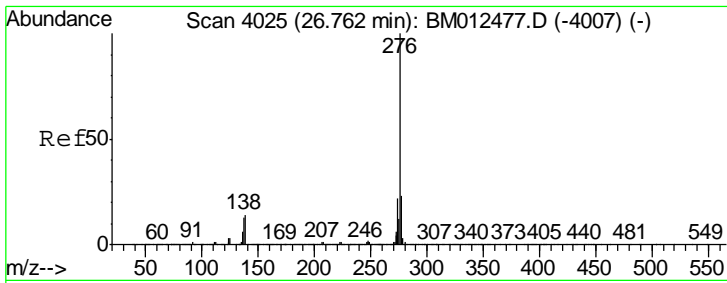
Tgt Ion	Resp	Lower	Upper
276	100		
138	14.9	9.3	13.9#
277	24.0	19.9	29.9



#90  
 Dibenzo(a,h)anthracene  
 Concen: 2.94 ng/ul  
 RT: 26.05 min Scan# 3904  
 Delta R.T. -0.04 min  
 Lab File: BM012478.D  
 Acq: 27 Oct 2017 09:42

Tgt Ion	Resp	Lower	Upper
278	100		
139	0.0	5.8	8.8#
279	29.7	18.6	27.8#





#91  
 Benzo(a,h,i)perylene  
 Concen: 10.43 ng/ul  
 RT: 26.77 min Scan# 4026  
 Delta R.T. -0.03 min  
 Lab File: BM012478.D  
 Acq: 27 Oct 2017 09:42

Instrument :  
 BNA\_M  
 ClientSampled :

Tot Ion: 276 Resp: 1398922

Ion	Ratio	Lower	Upper
276	100		
138	14.7	8.5	12.7#
277	25.1	18.6	28.0

