

Data Path : Z:\svoasrv\HPCHEM1\BNA_M\Data\BM102824\
 Data File : BM048278.D
 Acq On : 29 Oct 2024 06:23
 Operator : RC/JU
 Sample : PB164423BS
 Misc :
 ALS Vial : 32 Sample Multiplier: 1

Instrument :
 BNA_M
 ClientSampleId :
 SLCS423

Quant Time: Oct 29 06:56:59 2024
 Quant Method : Z:\svoasrv\HPCHEM1\BNA_M\Methods\SFAM-EPA-BM102624.MA.M
 Quant Title : SVOA CALIBRATION
 QLast Update : Sun Oct 27 23:39:58 2024
 Response via : Initial Calibration

Compound	R.T.	QIon	Response	Conc	Units	Dev(Min)
Internal Standards						
1) 1,4-Dichlorobenzene-d4	7.716	152	262293	20.000	ng/ul	0.00
20) Naphthalene-d8	10.504	136	1120894	20.000	ng/ul	0.00
38) Acenaphthene-d10	14.363	164	686442	20.000	ng/ul	0.00
64) Phenanthrene-d10	17.104	188	1258009	20.000	ng/ul	0.00
79) Chrysene-d12	21.327	240	976039	20.000	ng/ul	0.00
88) Perylene-d12	24.274	264	1018561	20.000	ng/ul	-0.01
System Monitoring Compounds						
3) 1,4-Dioxane-d8	3.169	96	39761	5.968	ng/uL	0.00
4) Pyridine-d5	3.581	84	561540	29.079	ng/ul	0.00
7) Phenol-d5	6.899	99	703324	31.212	ng/ul	0.00
9) Bis-(2-Chloroethyl)eth...	7.051	67	419270	30.036	ng/ul	0.00
11) 2-Chlorophenol-d4	7.251	132	586109	31.984	ng/ul	0.00
15) 4-Methylphenol-d8	8.434	113	553441	30.591	ng/ul	0.00
21) Nitrobenzene-d5	8.875	128	276529	30.091	ng/ul	0.00
24) 2-Nitrophenol-d4	9.592	143	306362	30.773	ng/ul	0.00
28) 2,4-Dichlorophenol-d3	10.134	165	558779	30.758	ng/ul	0.00
31) 4-Chloroaniline-d4	10.645	131	691837	27.426	ng/ul	0.00
46) Dimethylphthalate-d6	13.775	166	1458178	28.425	ng/ul	0.00
49) Acenaphthylene-d8	14.051	160	1714005	29.633	ng/ul	0.00
54) 4-Nitrophenol-d4	14.580	143	268179	28.587	ng/ul	0.00
60) Fluorene-d10	15.351	176	1228169	28.334	ng/ul	0.00
65) 4,6-Dinitro-2-methylph...	15.480	200	246905	29.698	ng/ul	0.00
73) Anthracene-d10	17.204	188	1779020	29.906	ng/ul	0.00
81) Pyrene-d10	19.492	212	1866182	31.508	ng/ul	0.00
92) Benzo(a)pyrene-d12	24.074	264	1675557	31.188	ng/ul	0.00
Target Compounds						
2) 1,4-Dioxane	3.205	88	80688	11.457	ng/uL	96
5) Pyridine	3.605	79	586689	29.644	ng/ul	99
6) Benzaldehyde	6.863	77	54342	4.873	ng/ul	94
8) Phenol	6.922	94	743683	31.690	ng/ul	99
10) Bis(2-Chloroethyl)ether	7.146	93	557005	29.709	ng/ul	99
12) 2-Chlorophenol	7.287	128	603304	32.067	ng/ul	99
13) 2-Methylphenol	8.169	108	547775	31.028	ng/ul	100
14) 2,2'-oxybis(1-Chloropr...	8.240	45	868360	30.304	ng/ul	99
16) Acetophenone	8.540	105	846037	29.692	ng/ul	99
17) N-Nitroso-di-n-propyla...	8.534	70	426039	29.152	ng/ul	98
18) 4-Methylphenol	8.498	108	604923	31.046	ng/ul	96
19) Hexachloroethane	8.793	117	236111	29.770	ng/ul	98
22) Nitrobenzene	8.916	77	625339	29.284	ng/ul	99
23) Isophorone	9.445	82	1197896	28.947	ng/ul	99
25) 2-Nitrophenol	9.628	139	331144	30.346	ng/ul	97
26) 2,4-Dimethylphenol	9.692	107	564061	28.157	ng/ul	99
27) Bis(2-Chloroethoxy)met...	9.922	93	756358	29.469	ng/ul	100
29) 2,4-Dichlorophenol	10.163	162	567505	30.529	ng/ul	99
30) Naphthalene	10.557	128	1830352	29.237	ng/ul	100
32) 4-Chloroaniline	10.669	127	380539	15.569	ng/ul	99
33) Hexachlorobutadiene	10.839	225	354380	28.609	ng/ul	99
34) Caprolactam	11.457	113	162110	27.343	ng/ul	96
35) 4-Chloro-3-methylphenol	11.810	107	555698	29.710	ng/ul	97
36) 2-Methylnaphthalene	12.175	142	1219779	28.905	ng/ul	100

Data Path : Z:\svoasrv\HPCHEM1\BNA_M\Data\BM102824\
 Data File : BM048278.D
 Acq On : 29 Oct 2024 06:23
 Operator : RC/JU
 Sample : PB164423BS
 Misc :
 ALS Vial : 32 Sample Multiplier: 1

Instrument :
 BNA_M
 ClientSampleId :
 SLCS423

Quant Time: Oct 29 06:56:59 2024
 Quant Method : Z:\svoasrv\HPCHEM1\BNA_M\Methods\SFAM-EPA-BM102624.MA.M
 Quant Title : SVOA CALIBRATION
 QLast Update : Sun Oct 27 23:39:58 2024
 Response via : Initial Calibration

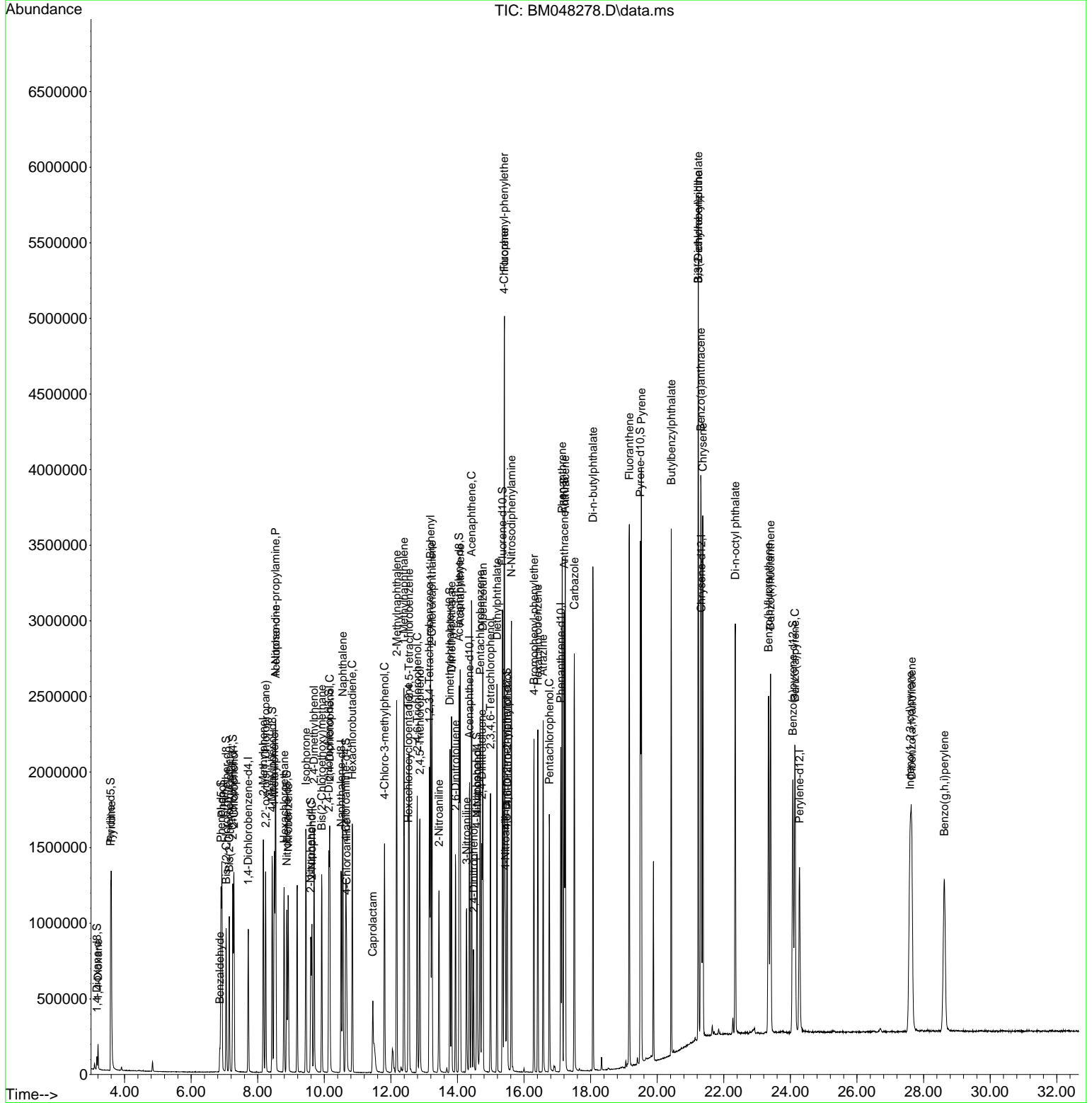
Compound	R.T.	QIon	Response	Conc	Units	Dev(Min)
37) 1-Methylnaphthalene	12.392	142	1204007	28.126	ng/ul	99
39) 1,2,4,5-Tetrachloroben...	12.545	216	646039	29.727	ng/ul	98
40) Hexachlorocyclopentadiene	12.522	237	341776	26.272	ng/ul	99
41) 2,4,6-Trichlorophenol	12.792	196	429738	30.635	ng/ul	99
42) 2,4,5-Trichlorophenol	12.869	196	459580	31.019	ng/ul	98
43) 1,1'-Biphenyl	13.192	154	1556719	29.568	ng/ul	99
44) 2-Chloronaphthalene	13.233	162	1215786	29.800	ng/ul	99
45) 2-Nitroaniline	13.445	65	338376	29.969	ng/ul	97
47) Dimethylphthalate	13.822	163	1467997	28.533	ng/ul	100
48) 2,6-Dinitrotoluene	13.939	165	301516	30.141	ng/ul	96
50) Acenaphthylene	14.080	152	1856563	29.385	ng/ul	100
51) 3-Nitroaniline	14.275	138	291480	27.681	ng/ul	99
52) Acenaphthene	14.422	153	1289630	28.765	ng/ul	99
53) 2,4-Dinitrophenol	14.486	184	178987	26.307	ng/ul	91
55) 4-Nitrophenol	14.592	109	186453	27.227	ng/ul	96
56) Dibenzofuran	14.763	168	1765218	28.619	ng/ul	100
57) 2,4-Dinitrotoluene	14.733	165	424874	29.051	ng/ul	100
58) 2,3,4,6-Tetrachlorophenol	14.992	232	362136	28.508	ng/ul	97
59) Diethylphthalate	15.186	149	1443494	27.888	ng/ul	100
61) Fluorene	15.410	166	1359077	27.672	ng/ul	100
62) 4-Chlorophenyl-phenyle...	15.404	204	684502	27.762	ng/ul	98
63) 4-Nitroaniline	15.439	138	318660	33.421	ng/ul	94
66) 4,6-Dinitro-2-methylph...	15.498	198	265129	29.748	ng/ul#	97
67) N-Nitrosodiphenylamine	15.621	169	1155655	30.768	ng/ul	99
68) 4-Bromophenyl-phenylether	16.298	248	418045	30.458	ng/ul	97
69) Hexachlorobenzene	16.416	284	483771	29.458	ng/ul	98
70) Atrazine	16.574	200	395340	30.742	ng/ul	99
71) Pentachlorophenol	16.763	266	307225	29.567	ng/ul	97
72) Phenanthrene	17.145	178	2053333	29.477	ng/ul	100
74) Anthracene	17.239	178	2069193	29.677	ng/ul	100
75) 1,2,3,4-Tetrachloroben...	13.157	216	625864	31.437	ng/uL	98
76) Pentachlorobenzene	14.680	250	597730	29.502	ng/uL	100
77) Carbazole	17.510	167	1857164	30.336	ng/ul	100
78) Di-n-butylphthalate	18.068	149	2389116	29.697	ng/ul	100
80) Fluoranthene	19.162	202	2197911	31.892	ng/ul	98
82) Pyrene	19.521	202	2324284	31.455	ng/ul	98
83) Butylbenzylphthalate	20.421	149	958921	31.403	ng/ul	99
84) 3,3'-Dichlorobenzidine	21.233	252	640036	30.054	ng/ul	98
85) Benzo(a)anthracene	21.309	228	2104709	29.902	ng/ul	100
86) Bis(2-ethylhexyl)phtha...	21.233	149	1380819	31.381	ng/ul	99
87) Chrysene	21.368	228	1997903	30.185	ng/ul	99
89) Di-n-octyl phthalate	22.345	149	2272999	29.829	ng/ul	100
90) Benzo(b)fluoranthene	23.345	252	2007455	30.884	ng/ul	99
91) Benzo(k)fluoranthene	23.403	252	2003016	30.777	ng/ul	100
93) Benzo(a)pyrene	24.139	252	1851704	31.315	ng/ul	99
94) Indeno(1,2,3-cd)pyrene	27.591	276	2334045	32.775	ng/ul	99
95) Dibenzo(a,h)anthracene	27.644	278	1929278	33.125	ng/ul	100
96) Benzo(g,h,i)perylene	28.627	276	1808539	33.093	ng/ul	99

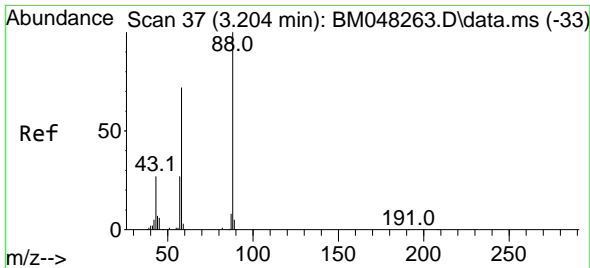
(#) = qualifier out of range (m) = manual integration (+) = signals summed

Data Path : Z:\svoasrv\HPCHEM1\BNA_M\Data\BM102824\
 Data File : BM048278.D
 Acq On : 29 Oct 2024 06:23
 Operator : RC/JU
 Sample : PB164423BS
 Misc :
 ALS Vial : 32 Sample Multiplier: 1

Instrument :
 BNA_M
Client SampleId :
 SLCS423

Quant Time: Oct 29 06:56:59 2024
 Quant Method : Z:\svoasrv\HPCHEM1\BNA_M\Methods\SFAM-EPA-BM102624.MA.M
 Quant Title : SVOA CALIBRATION
 QLast Update : Sun Oct 27 23:39:58 2024
 Response via : Initial Calibration

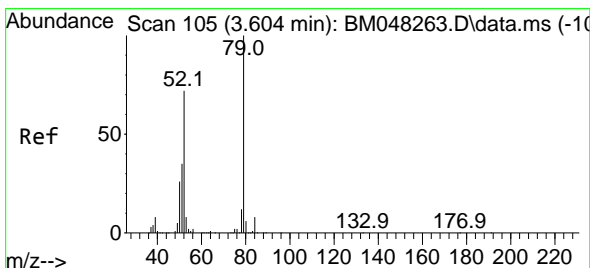
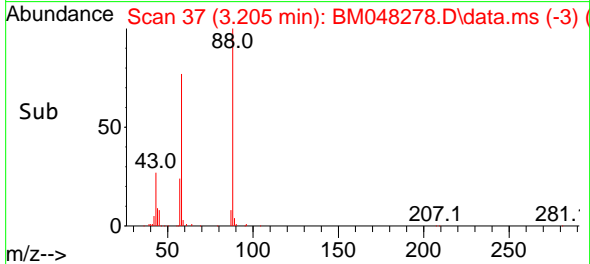
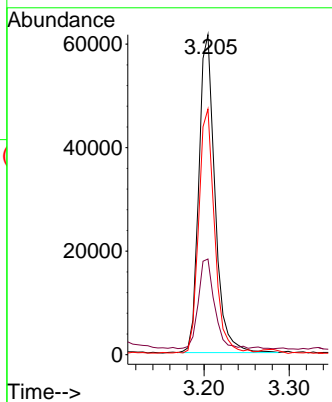
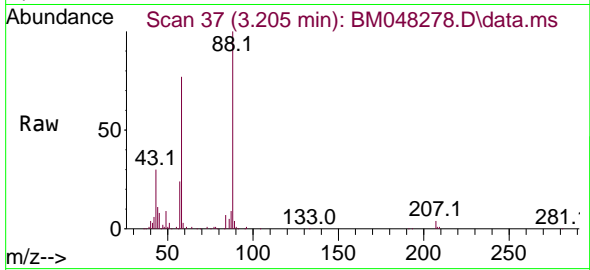




#2
 1,4-Dioxane
 Concen: 11.457 ng/uL
 RT: 3.205 min Scan# 31
 Delta R.T. 0.001 min
 Lab File: BM048278.D
 Acq: 29 Oct 2024 06:23

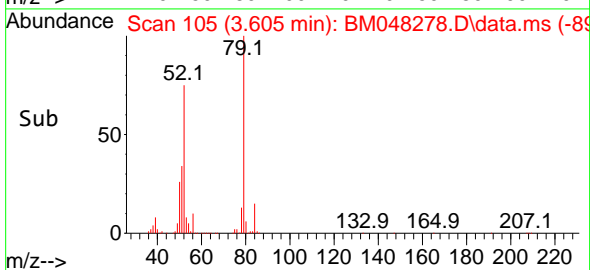
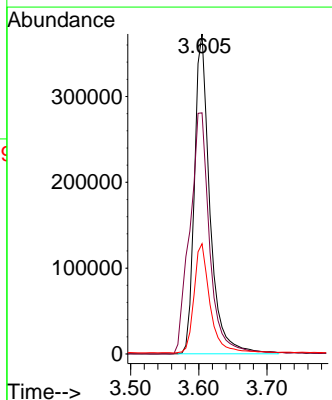
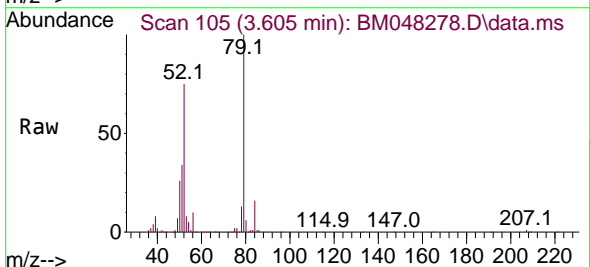
Instrument :
 BNA_M
 ClientSampleId :
 SLCS423

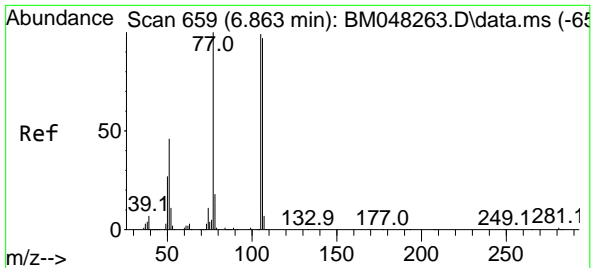
Tgt Ion: 88 Resp: 80688
 Ion Ratio Lower Upper
 88 100
 43 29.9 22.3 33.5
 58 76.8 58.7 88.1



#5
 Pyridine
 Concen: 29.644 ng/uL
 RT: 3.605 min Scan# 105
 Delta R.T. -0.006 min
 Lab File: BM048278.D
 Acq: 29 Oct 2024 06:23

Tgt Ion: 79 Resp: 586689
 Ion Ratio Lower Upper
 79 100
 52 75.4 60.5 90.7
 51 34.5 28.5 42.7

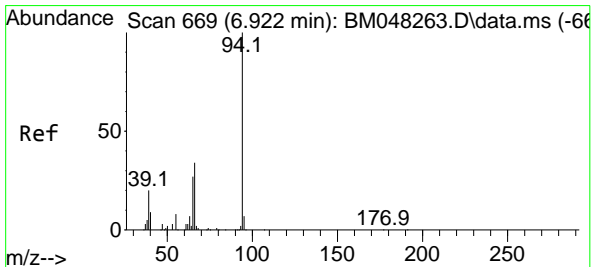
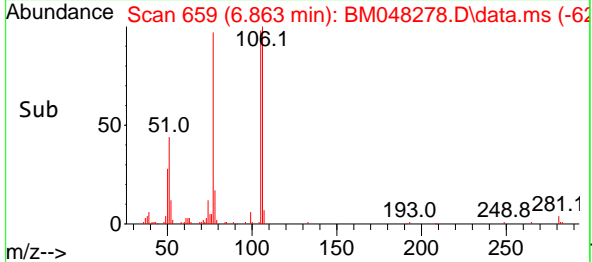
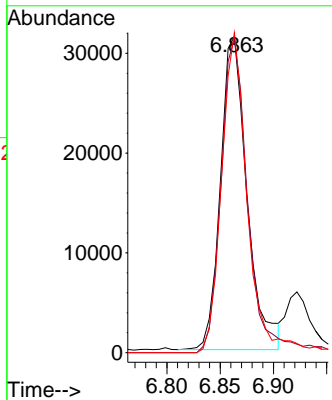
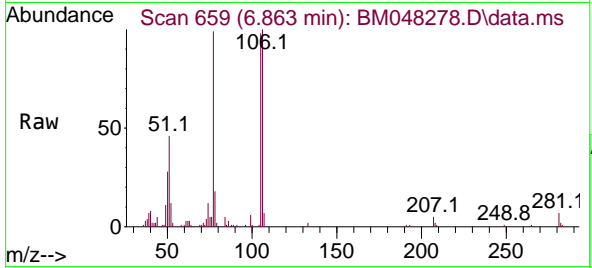




#6
Benzaldehyde
Concen: 4.873 ng/u1
RT: 6.863 min Scan# 659
Delta R.T. 0.000 min
Lab File: BM048278.D
Acq: 29 Oct 2024 06:23

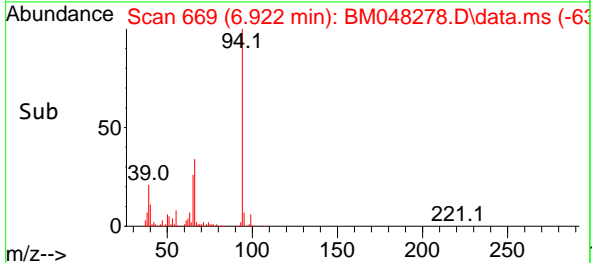
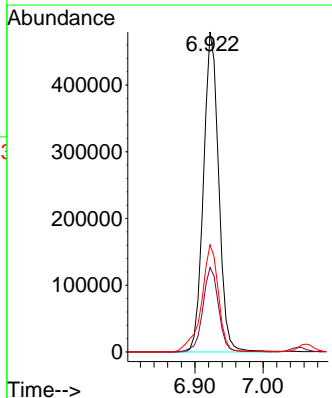
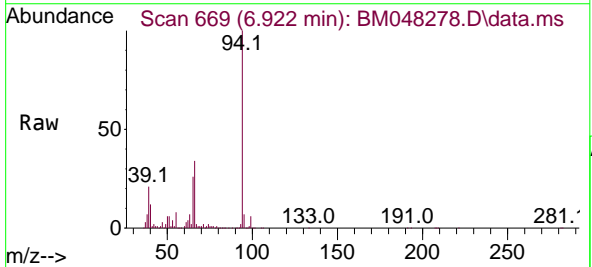
Instrument :
BNA_M
ClientSampleId :
SLCS423

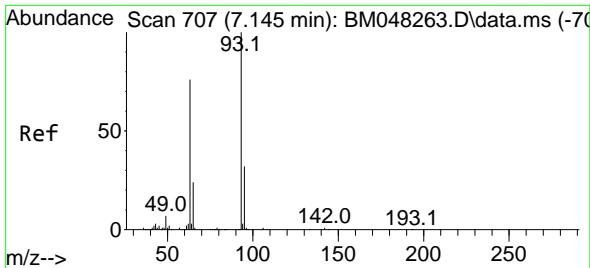
Tgt Ion: 77 Resp: 54342
Ion Ratio Lower Upper
77 100
105 99.4 76.5 114.7
106 101.2 75.1 112.7



#8
Phenol
Concen: 31.690 ng/u1
RT: 6.922 min Scan# 669
Delta R.T. -0.006 min
Lab File: BM048278.D
Acq: 29 Oct 2024 06:23

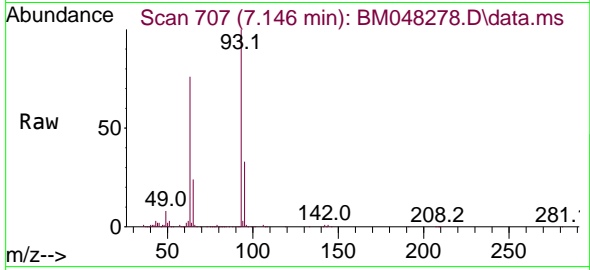
Tgt Ion: 94 Resp: 743683
Ion Ratio Lower Upper
94 100
65 26.4 21.1 31.7
66 33.5 27.6 41.4





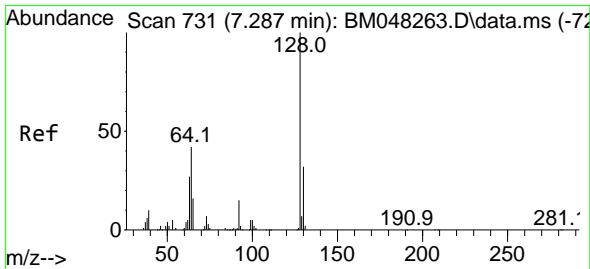
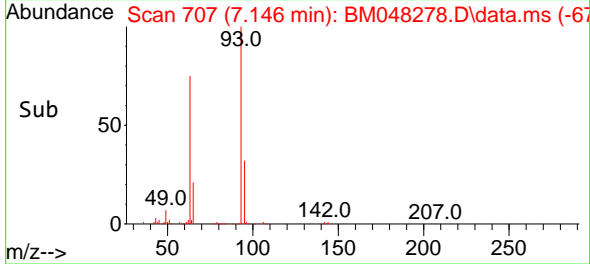
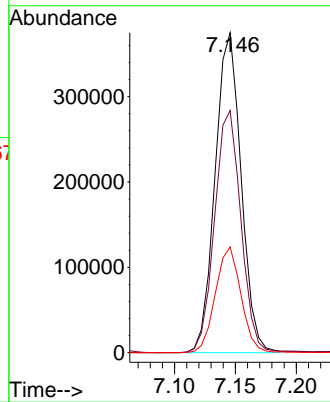
#10
 Bis(2-Chloroethyl)ether
 Concen: 29.709 ng/ul
 RT: 7.146 min Scan# 707
 Delta R.T. 0.000 min
 Lab File: BM048278.D
 Acq: 29 Oct 2024 06:23

Instrument :
 BNA_M
 ClientSampleId :
 SLCS423



Tgt Ion: 93 Resp: 557005

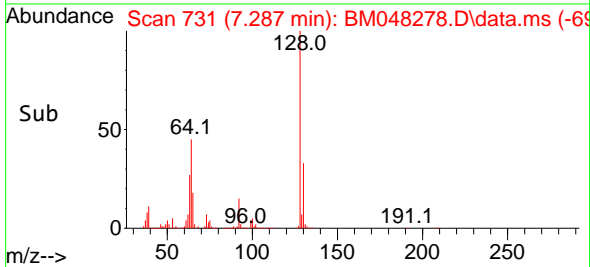
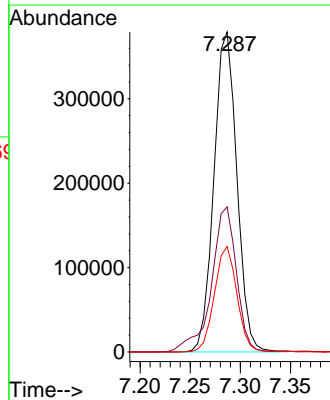
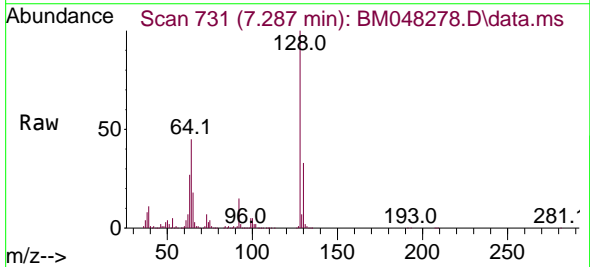
Ion	Ratio	Lower	Upper
93	100		
63	75.7	61.7	92.5
95	33.1	26.3	39.5

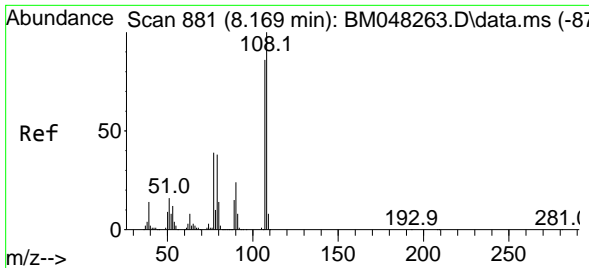


#12
 2-Chlorophenol
 Concen: 32.067 ng/ul
 RT: 7.287 min Scan# 731
 Delta R.T. 0.000 min
 Lab File: BM048278.D
 Acq: 29 Oct 2024 06:23

Tgt Ion: 128 Resp: 603304

Ion	Ratio	Lower	Upper
128	100		
64	45.4	36.8	55.2
130	33.0	26.0	39.0

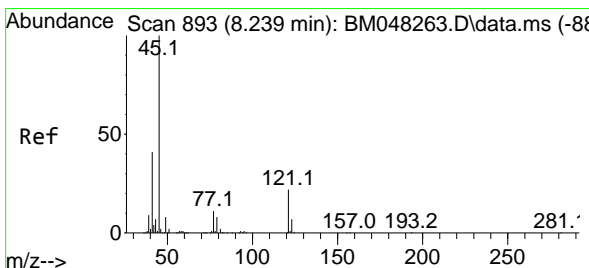
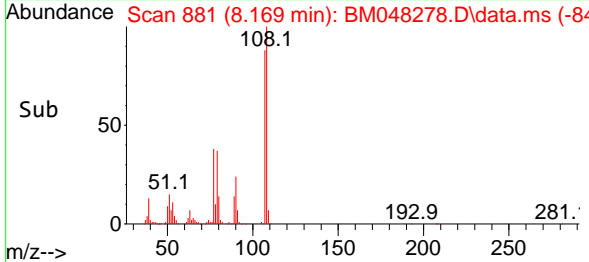
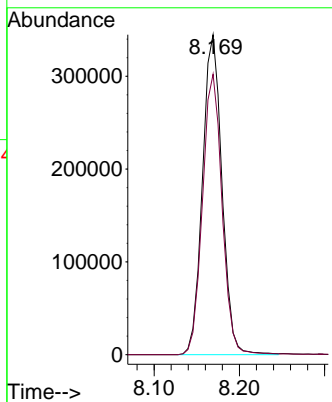
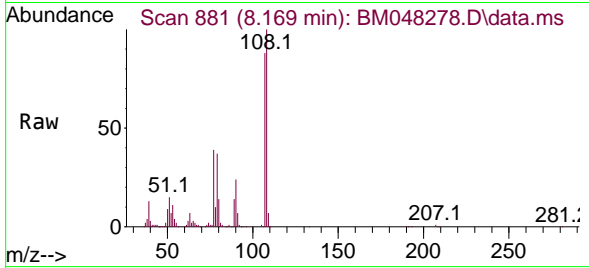




#13
 2-Methylphenol
 Concen: 31.028 ng/ul
 RT: 8.169 min Scan# 881
 Delta R.T. -0.006 min
 Lab File: BM048278.D
 Acq: 29 Oct 2024 06:23

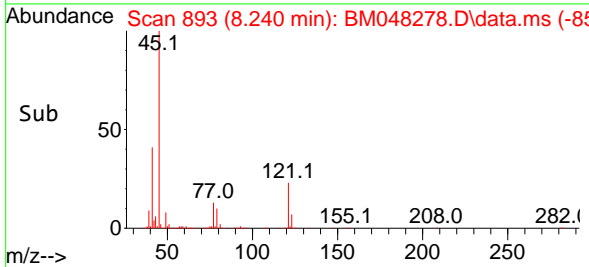
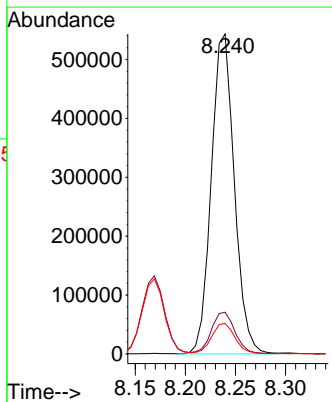
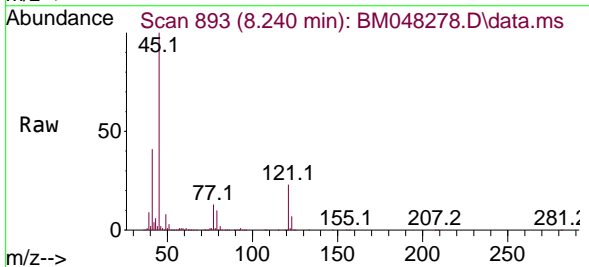
Instrument :
 BNA_M
 ClientSampleId :
 SLCS423

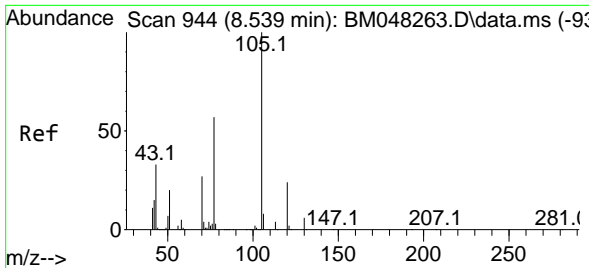
Tgt Ion: 108 Resp: 547775
 Ion Ratio Lower Upper
 108 100
 107 87.7 70.1 105.1



#14
 2,2'-oxybis(1-Chloropropane)
 Concen: 30.304 ng/ul
 RT: 8.240 min Scan# 893
 Delta R.T. 0.000 min
 Lab File: BM048278.D
 Acq: 29 Oct 2024 06:23

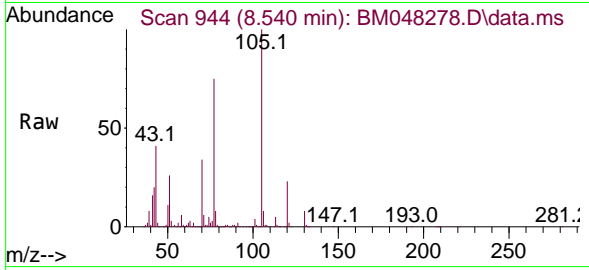
Tgt Ion: 45 Resp: 868360
 Ion Ratio Lower Upper
 45 100
 77 13.0 11.0 16.6
 79 9.6 7.5 11.3



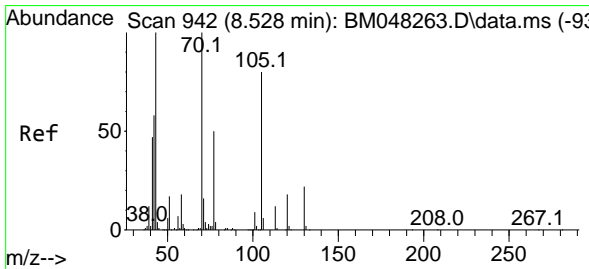
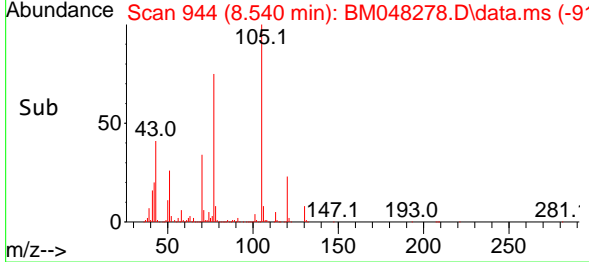
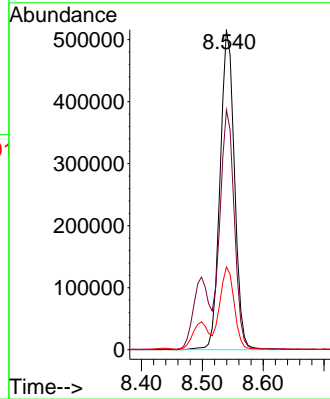


#16
 Acetophenone
 Concen: 29.692 ng/ul
 RT: 8.540 min Scan# 944
 Delta R.T. -0.006 min
 Lab File: BM048278.D
 Acq: 29 Oct 2024 06:23

Instrument :
 BNA_M
 ClientSampleId :
 SLCS423

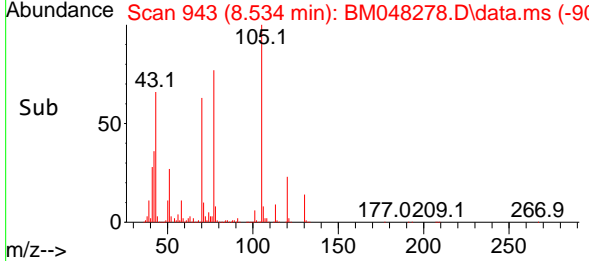
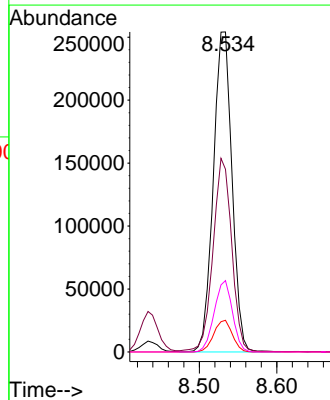
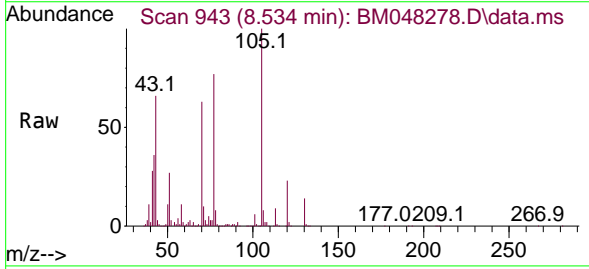


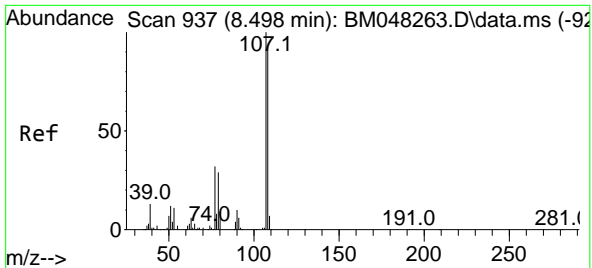
Tgt Ion:105 Resp: 846037
 Ion Ratio Lower Upper
 105 100
 77 75.0 60.2 90.4
 51 25.8 21.6 32.4



#17
 N-Nitroso-di-n-propylamine
 Concen: 29.152 ng/ul
 RT: 8.534 min Scan# 943
 Delta R.T. 0.000 min
 Lab File: BM048278.D
 Acq: 29 Oct 2024 06:23

Tgt Ion: 70 Resp: 426039
 Ion Ratio Lower Upper
 70 100
 42 57.1 47.5 71.3
 101 9.9 7.4 11.2
 130 22.3 17.4 26.2

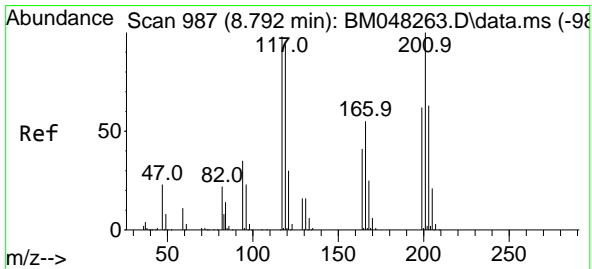
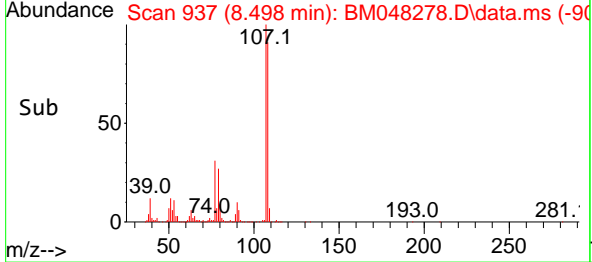
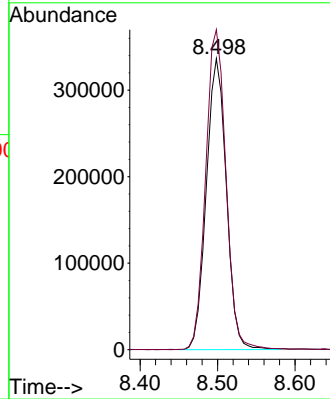
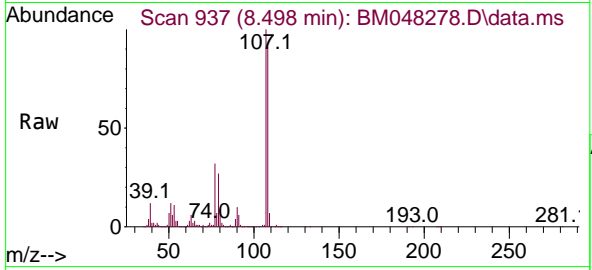




#18
 4-Methylphenol
 Concen: 31.046 ng/u1
 RT: 8.498 min Scan# 91
 Delta R.T. 0.000 min
 Lab File: BM048278.D
 Acq: 29 Oct 2024 06:23

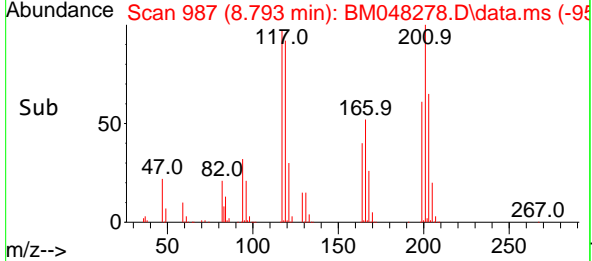
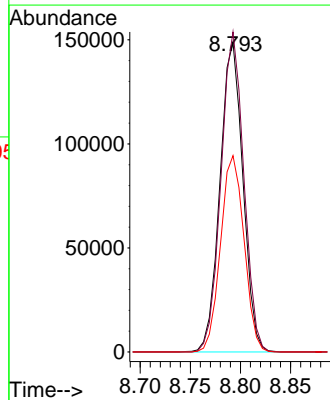
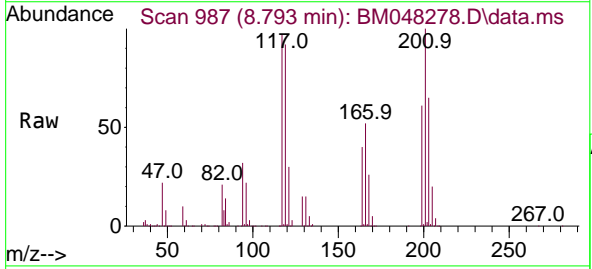
Instrument :
 BNA_M
 ClientSampleId :
 SLCS423

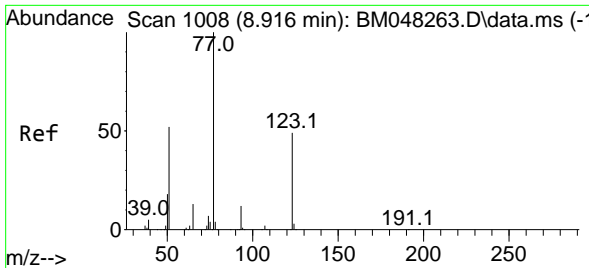
Tgt Ion:108 Resp: 604923
 Ion Ratio Lower Upper
 108 100
 107 110.0 91.4 137.0



#19
 Hexachloroethane
 Concen: 29.770 ng/u1
 RT: 8.793 min Scan# 987
 Delta R.T. -0.006 min
 Lab File: BM048278.D
 Acq: 29 Oct 2024 06:23

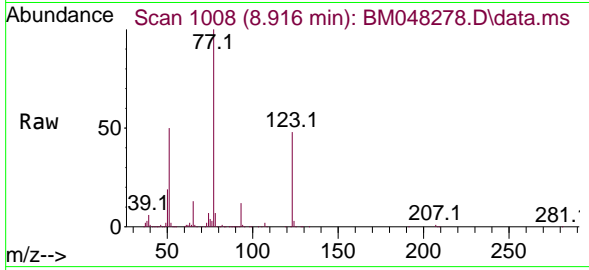
Tgt Ion:117 Resp: 236111
 Ion Ratio Lower Upper
 117 100
 201 103.3 82.2 123.2
 199 63.4 53.2 79.8





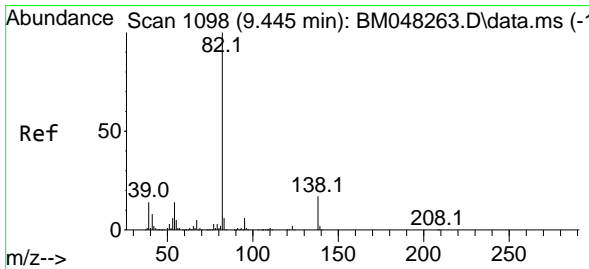
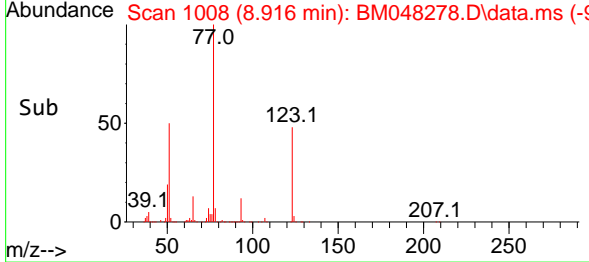
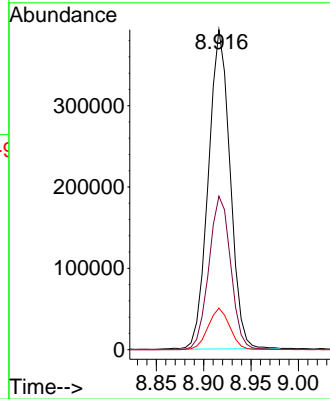
#22
 Nitrobenzene
 Concen: 29.284 ng/u1
 RT: 8.916 min Scan# 1008
 Delta R.T. -0.006 min
 Lab File: BM048278.D
 Acq: 29 Oct 2024 06:23

Instrument :
 BNA_M
 ClientSampleId :
 SLCS423



Tgt Ion: 77 Resp: 625339

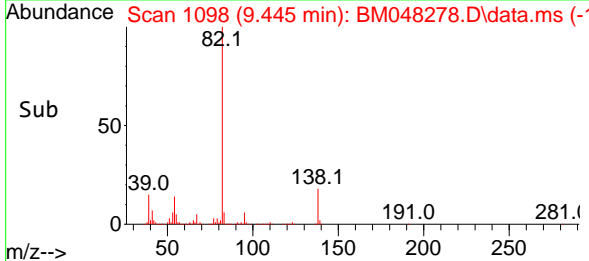
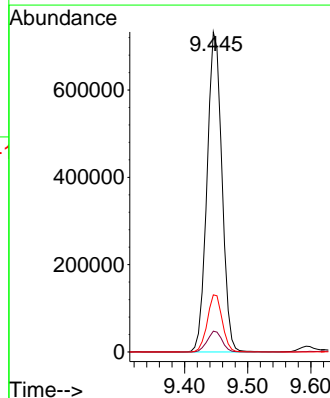
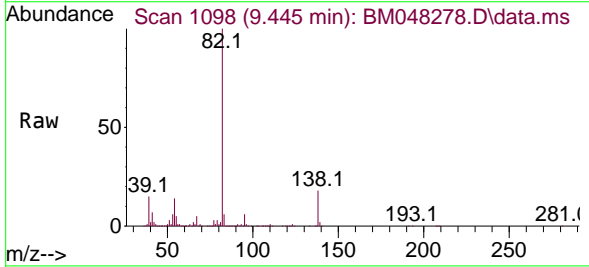
Ion	Ratio	Lower	Upper
77	100		
123	48.0	37.8	56.8
65	13.0	10.8	16.2

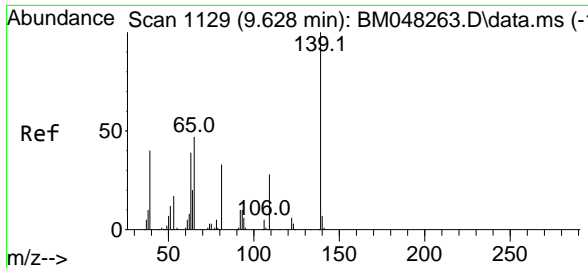


#23
 Isophorone
 Concen: 28.947 ng/u1
 RT: 9.445 min Scan# 1098
 Delta R.T. -0.006 min
 Lab File: BM048278.D
 Acq: 29 Oct 2024 06:23

Tgt Ion: 82 Resp: 1197896

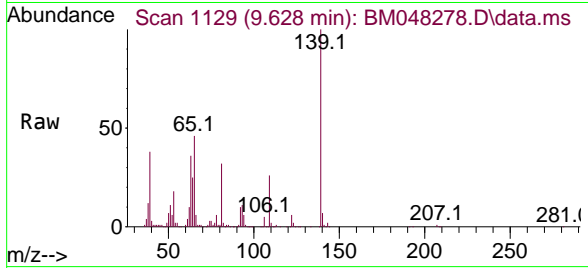
Ion	Ratio	Lower	Upper
82	100		
95	6.5	5.0	7.4
138	17.9	14.7	22.1



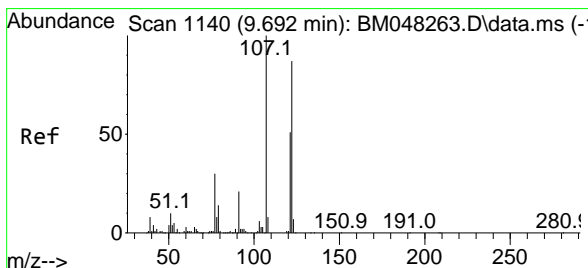
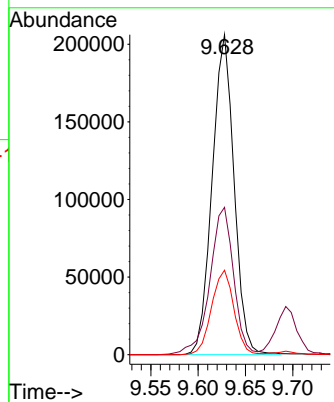
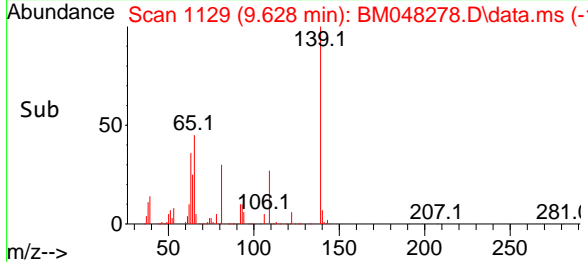


#25
 2-Nitrophenol
 Concen: 30.346 ng/ul
 RT: 9.628 min Scan# 1129
 Delta R.T. -0.006 min
 Lab File: BM048278.D
 Acq: 29 Oct 2024 06:23

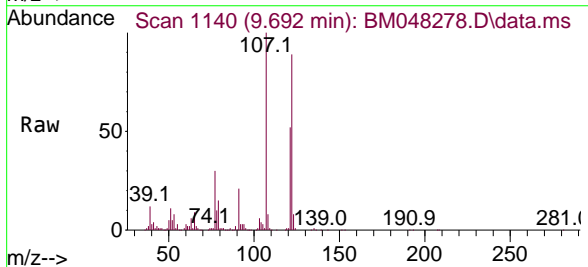
Instrument :
 BNA_M
 ClientSampleId :
 SLCS423



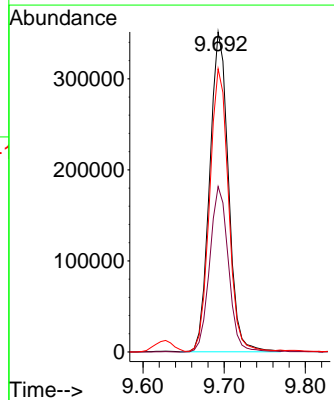
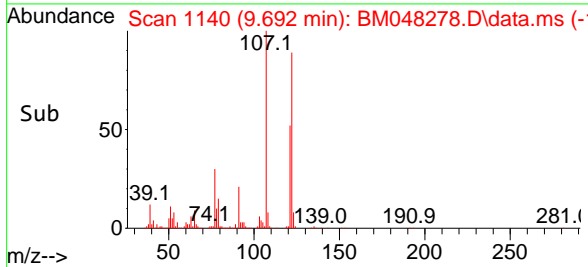
Tgt Ion:139 Resp: 331144
 Ion Ratio Lower Upper
 139 100
 65 46.1 38.6 57.8
 109 26.4 21.7 32.5

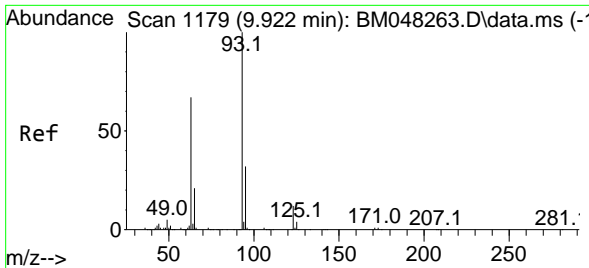


#26
 2,4-Dimethylphenol
 Concen: 28.157 ng/ul
 RT: 9.692 min Scan# 1140
 Delta R.T. -0.006 min
 Lab File: BM048278.D
 Acq: 29 Oct 2024 06:23



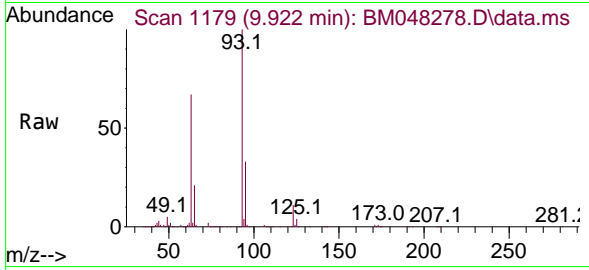
Tgt Ion:107 Resp: 564061
 Ion Ratio Lower Upper
 107 100
 121 51.7 41.2 61.8
 122 88.5 70.2 105.2





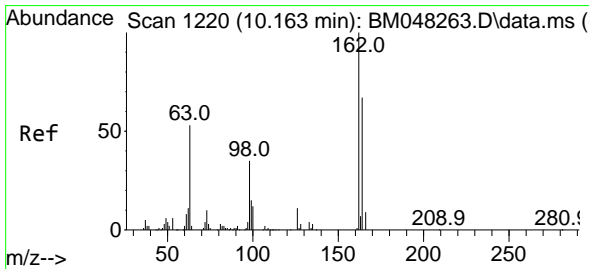
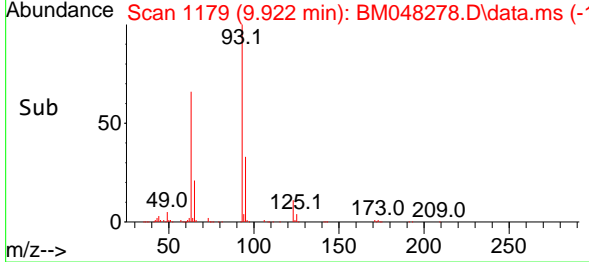
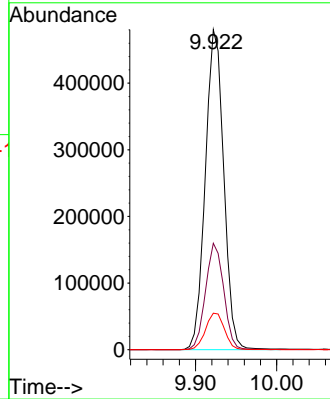
#27
 Bis(2-Chloroethoxy)methane
 Concen: 29.469 ng/ul
 RT: 9.922 min Scan# 1179
 Delta R.T. -0.006 min
 Lab File: BM048278.D
 Acq: 29 Oct 2024 06:23

Instrument : BNA_M
 ClientSampleId : SLCS423



Tgt Ion: 93 Resp: 756358

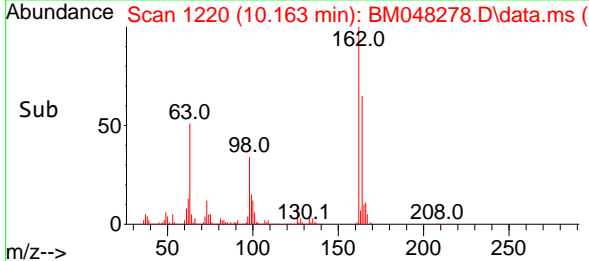
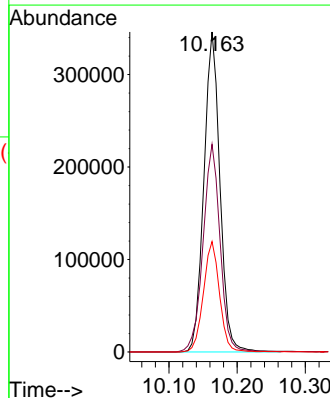
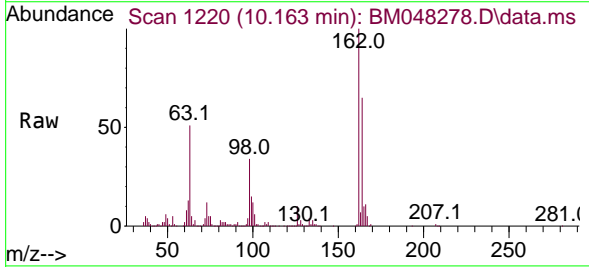
Ion	Ratio	Lower	Upper
93	100		
95	33.2	26.3	39.5
123	11.4	9.1	13.7

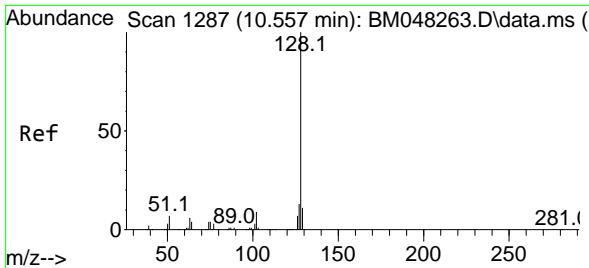


#29
 2,4-Dichlorophenol
 Concen: 30.529 ng/ul
 RT: 10.163 min Scan# 1220
 Delta R.T. -0.006 min
 Lab File: BM048278.D
 Acq: 29 Oct 2024 06:23

Tgt Ion: 162 Resp: 567505

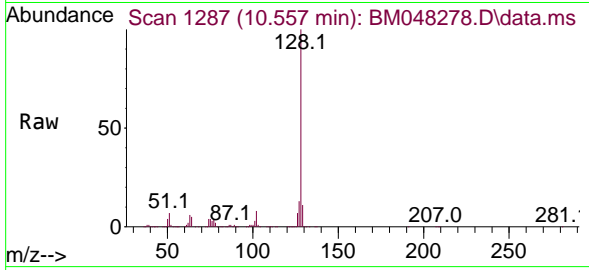
Ion	Ratio	Lower	Upper
162	100		
164	64.9	52.3	78.5
98	34.5	27.3	40.9



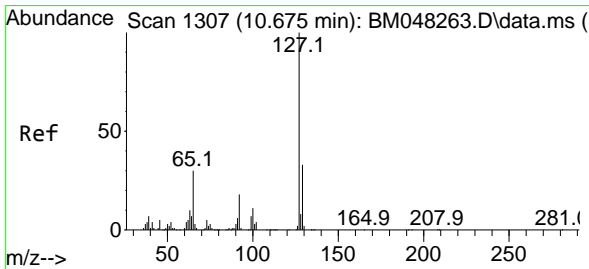
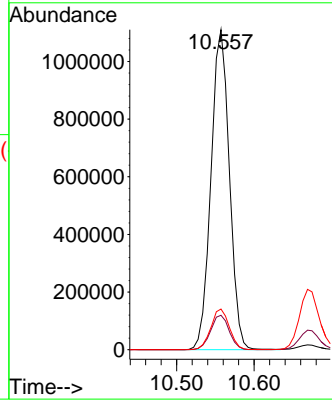
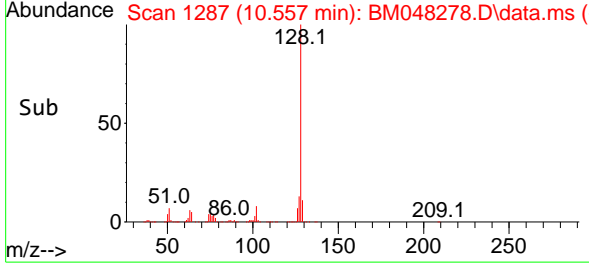


#30
 Naphthalene
 Concen: 29.237 ng/u1
 RT: 10.557 min Scan# 11
 Delta R.T. -0.006 min
 Lab File: BM048278.D
 Acq: 29 Oct 2024 06:23

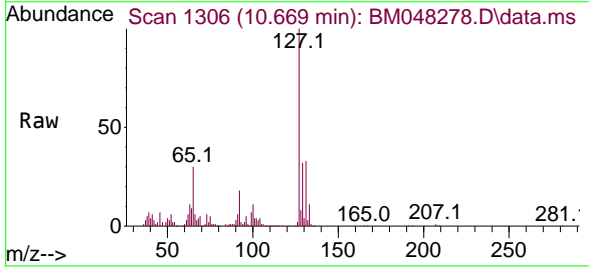
Instrument :
 BNA_M
 ClientSampleId :
 SLCS423



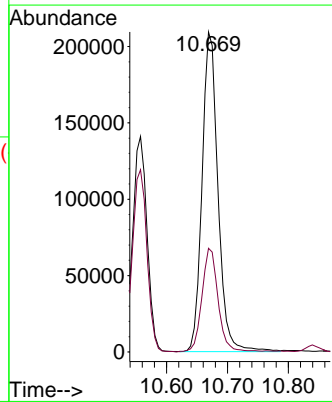
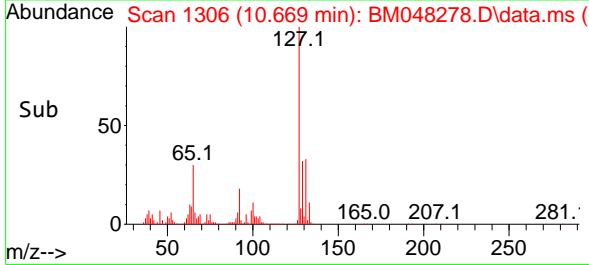
Tgt Ion:128 Resp: 1830352
 Ion Ratio Lower Upper
 128 100
 129 10.7 8.6 12.8
 127 12.7 10.4 15.6

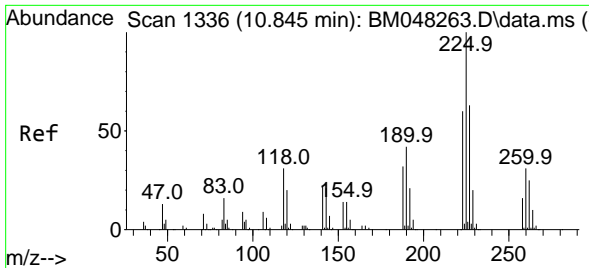


#32
 4-Chloroaniline
 Concen: 15.569 ng/u1
 RT: 10.669 min Scan# 1306
 Delta R.T. -0.006 min
 Lab File: BM048278.D
 Acq: 29 Oct 2024 06:23



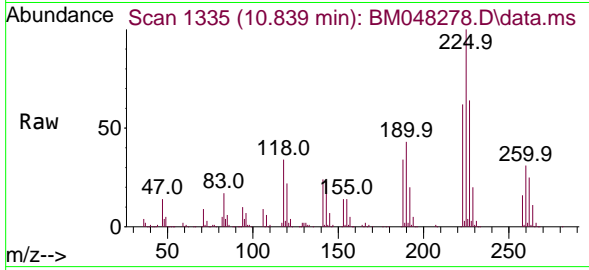
Tgt Ion:127 Resp: 380539
 Ion Ratio Lower Upper
 127 100
 129 32.4 25.7 38.5



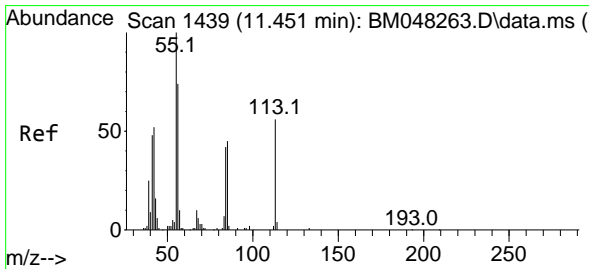
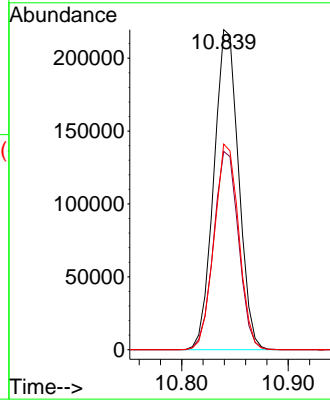
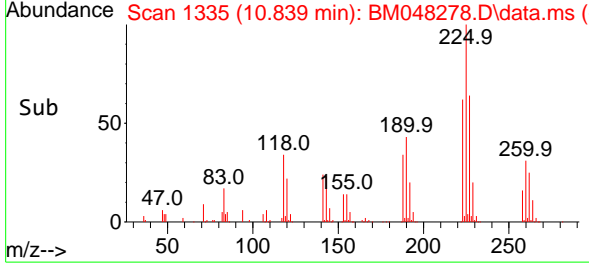


#33
 Hexachlorobutadiene
 Concen: 28.609 ng/u1
 RT: 10.839 min Scan# 111
 Delta R.T. -0.006 min
 Lab File: BM048278.D
 Acq: 29 Oct 2024 06:23

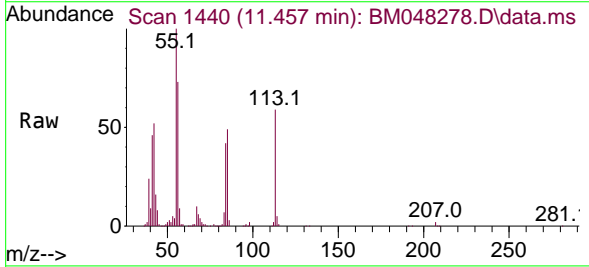
Instrument :
 BNA_M
 ClientSampleId :
 SLCS423



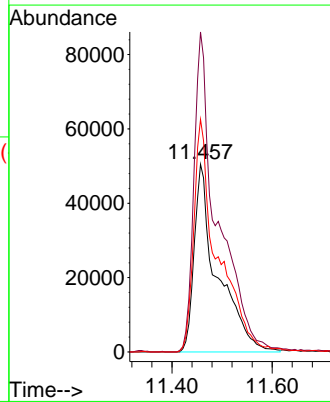
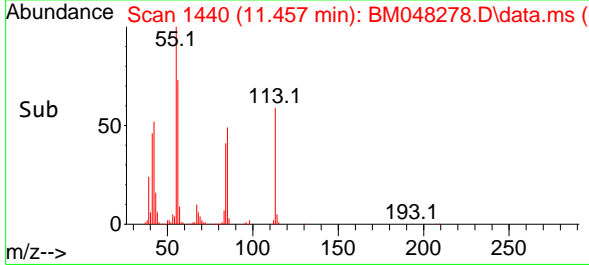
Tgt Ion:225 Resp: 354380
 Ion Ratio Lower Upper
 225 100
 223 62.0 50.4 75.6
 227 64.2 50.8 76.2

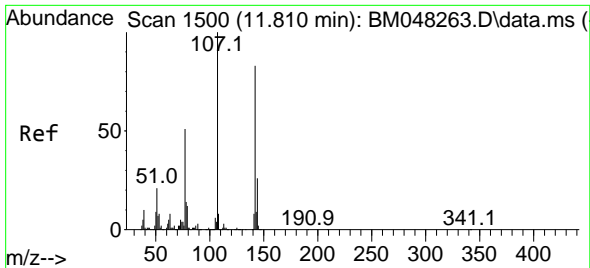


#34
 Caprolactam
 Concen: 27.343 ng/u1
 RT: 11.457 min Scan# 1440
 Delta R.T. 0.000 min
 Lab File: BM048278.D
 Acq: 29 Oct 2024 06:23



Tgt Ion:113 Resp: 162110
 Ion Ratio Lower Upper
 113 100
 55 170.5 135.1 202.7
 56 123.9 105.8 158.8



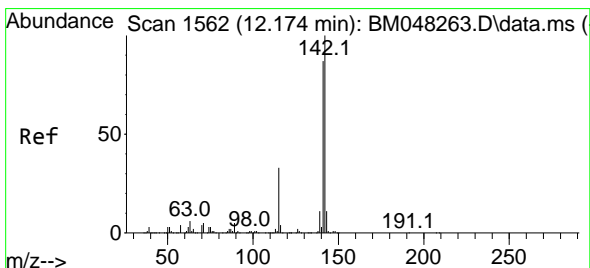
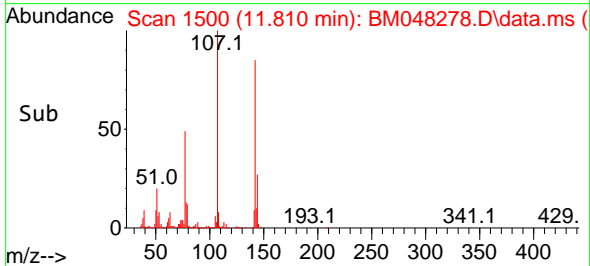
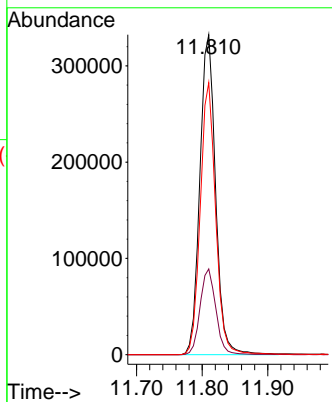
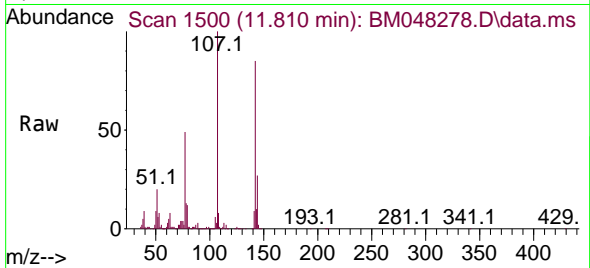


#35
 4-Chloro-3-methylphenol
 Concen: 29.710 ng/ul
 RT: 11.810 min Scan# 11
 Delta R.T. -0.006 min
 Lab File: BM048278.D
 Acq: 29 Oct 2024 06:23

Instrument :
 BNA_M
 ClientSampleId :
 SLCS423

Tgt Ion:107 Resp: 555698

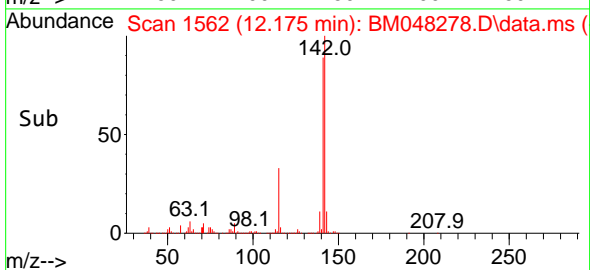
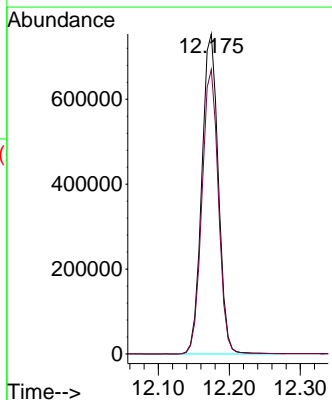
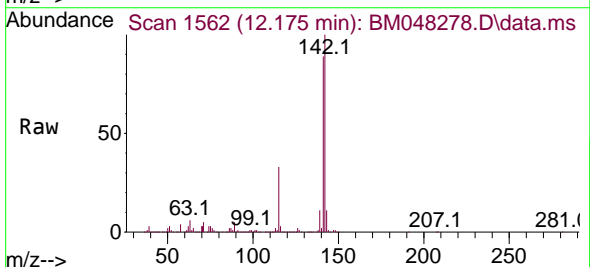
Ion	Ratio	Lower	Upper
107	100		
144	26.8	20.9	31.3
142	85.0	65.3	97.9

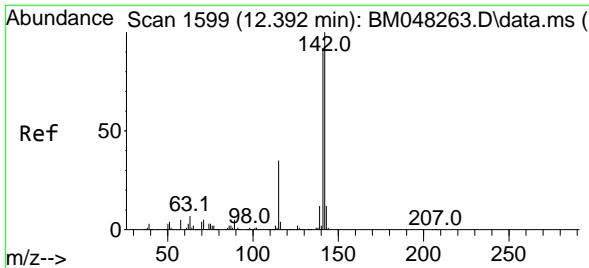


#36
 2-Methylnaphthalene
 Concen: 28.905 ng/ul
 RT: 12.175 min Scan# 1562
 Delta R.T. -0.006 min
 Lab File: BM048278.D
 Acq: 29 Oct 2024 06:23

Tgt Ion:142 Resp: 1219779

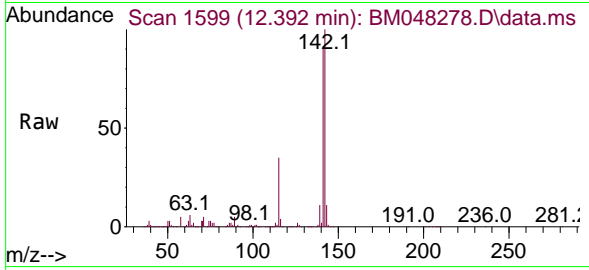
Ion	Ratio	Lower	Upper
142	100		
141	88.9	71.4	107.2





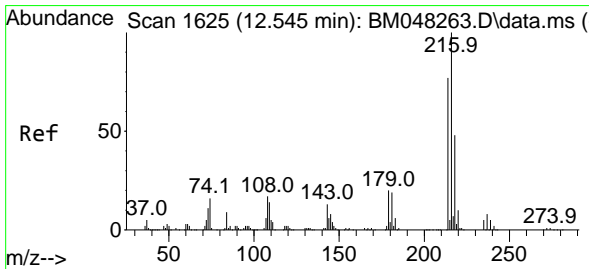
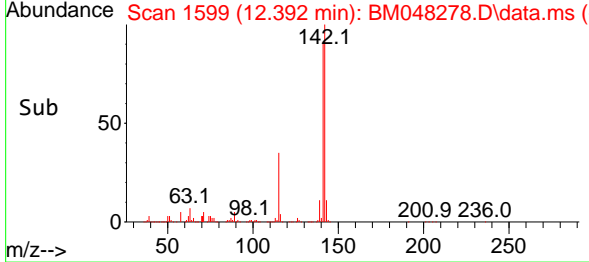
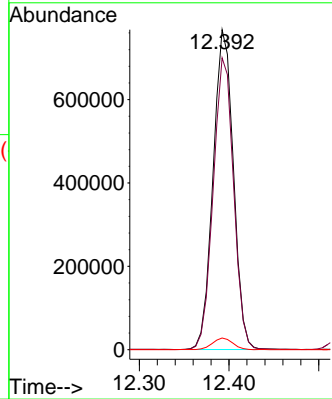
#37
 1-Methylnaphthalene
 Concen: 28.126 ng/ul
 RT: 12.392 min Scan# 1599
 Delta R.T. -0.006 min
 Lab File: BM048278.D
 Acq: 29 Oct 2024 06:23

Instrument :
 BNA_M
 ClientSampleId :
 SLCS423

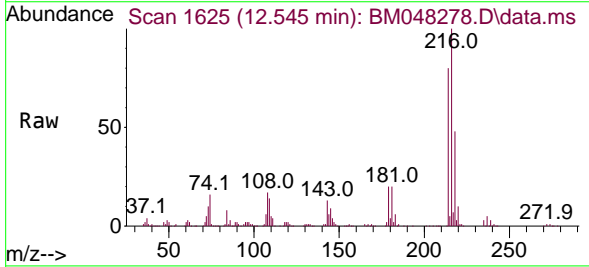


Tgt Ion:142 Resp: 1204007

Ion	Ratio	Lower	Upper
142	100		
141	91.2	72.2	108.4
116	3.7	2.9	4.3

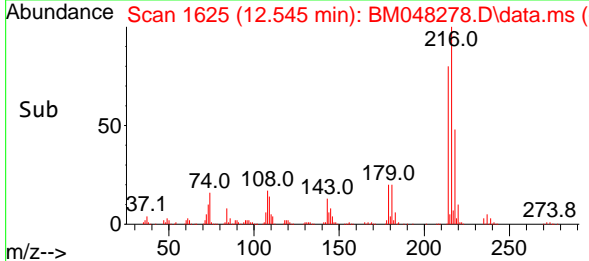
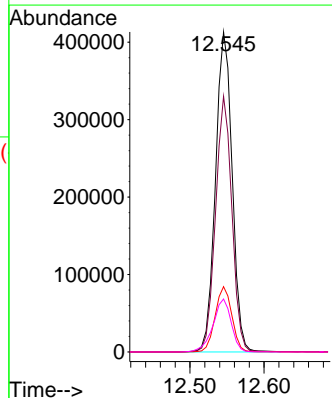


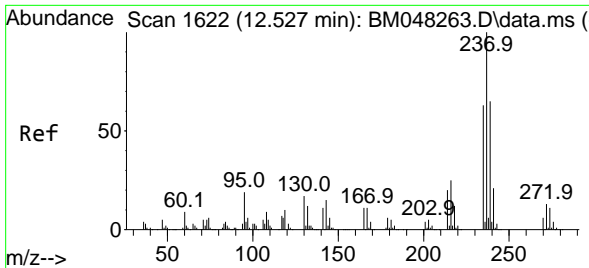
#39
 1,2,4,5-Tetrachlorobenzene
 Concen: 29.727 ng/ul
 RT: 12.545 min Scan# 1625
 Delta R.T. -0.006 min
 Lab File: BM048278.D
 Acq: 29 Oct 2024 06:23



Tgt Ion:216 Resp: 646039

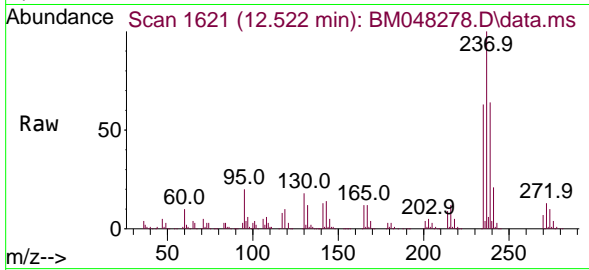
Ion	Ratio	Lower	Upper
216	100		
214	79.9	62.2	93.4
179	20.4	16.2	24.2
108	16.6	13.0	19.6



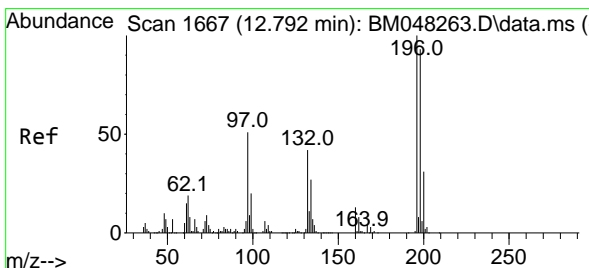
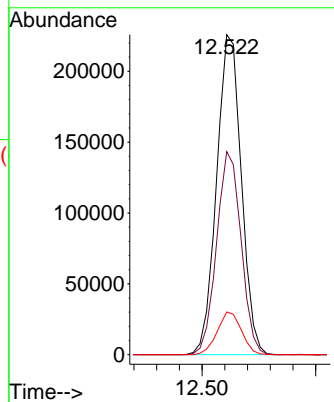
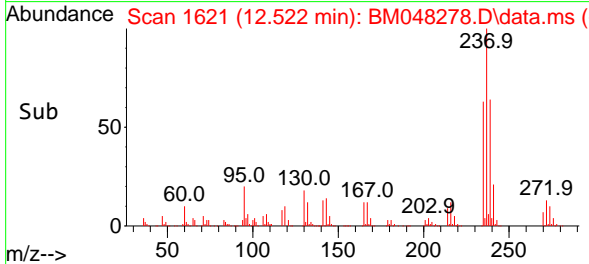


#40
 Hexachlorocyclopentadiene
 Concen: 26.272 ng/ul
 RT: 12.522 min Scan# 1621
 Delta R.T. -0.006 min
 Lab File: BM048278.D
 Acq: 29 Oct 2024 06:23

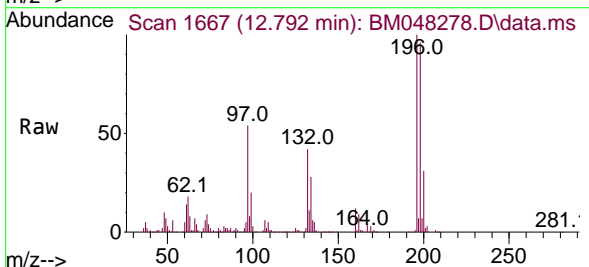
Instrument :
 BNA_M
 ClientSampleId :
 SLCS423



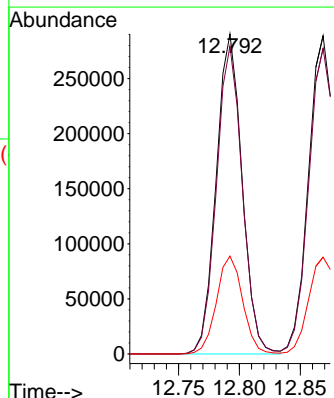
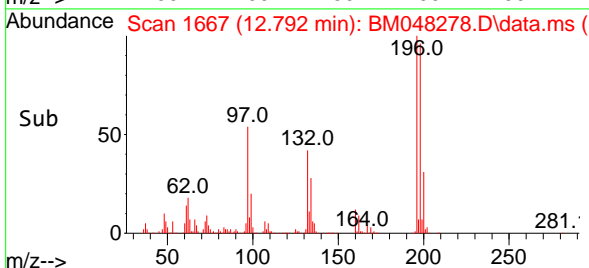
Tgt Ion:237 Resp: 341776
 Ion Ratio Lower Upper
 237 100
 235 63.4 50.5 75.7
 272 13.4 10.4 15.6

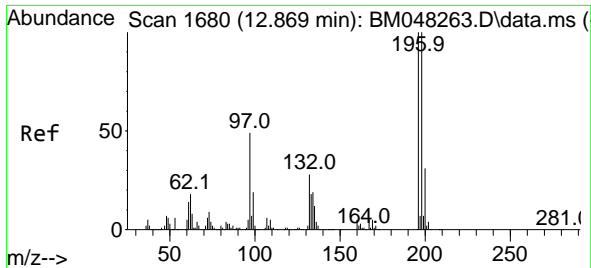


#41
 2,4,6-Trichlorophenol
 Concen: 30.635 ng/ul
 RT: 12.792 min Scan# 1667
 Delta R.T. -0.006 min
 Lab File: BM048278.D
 Acq: 29 Oct 2024 06:23



Tgt Ion:196 Resp: 429738
 Ion Ratio Lower Upper
 196 100
 198 96.2 78.4 117.6
 200 30.6 24.6 36.8



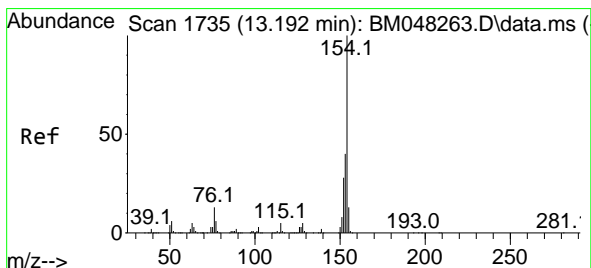
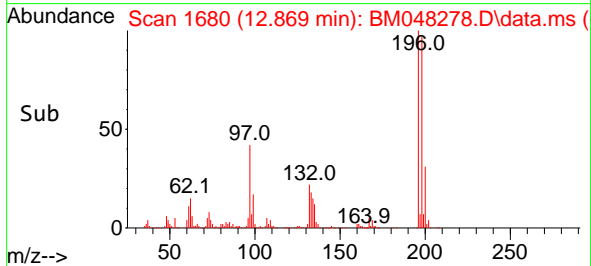
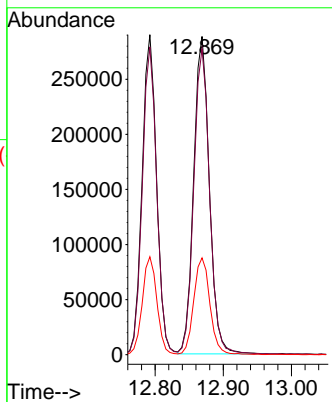
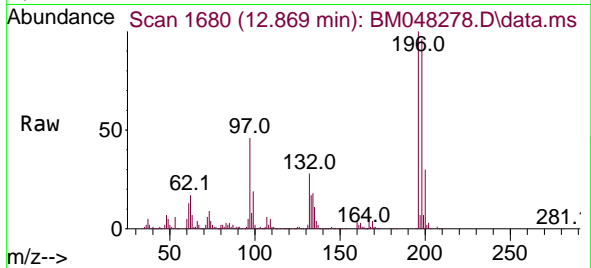


#42
 2,4,5-Trichlorophenol
 Concen: 31.019 ng/uI
 RT: 12.869 min Scan# 1680
 Delta R.T. -0.006 min
 Lab File: BM048278.D
 Acq: 29 Oct 2024 06:23

Instrument :
 BNA_M
 ClientSampleId :
 SLCS423

Tgt Ion:196 Resp: 459580

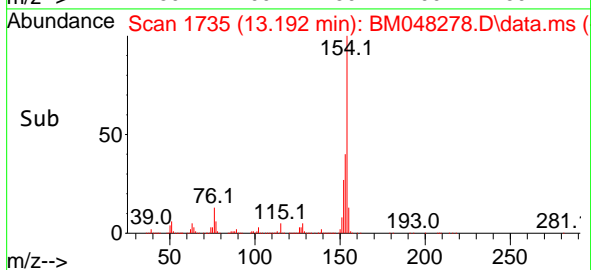
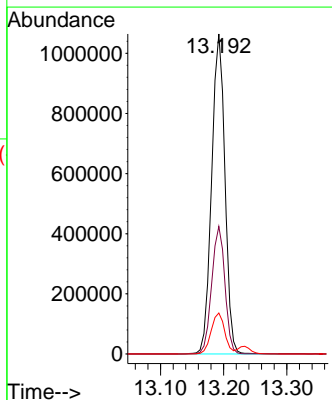
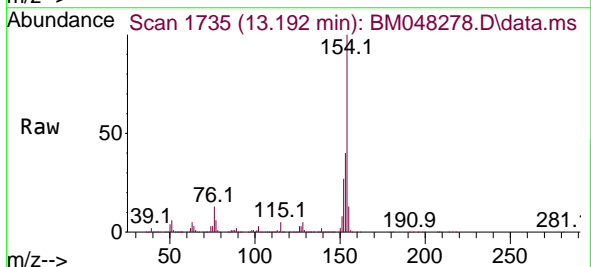
Ion	Ratio	Lower	Upper
196	100		
198	96.0	75.8	113.6
200	30.4	25.6	38.4

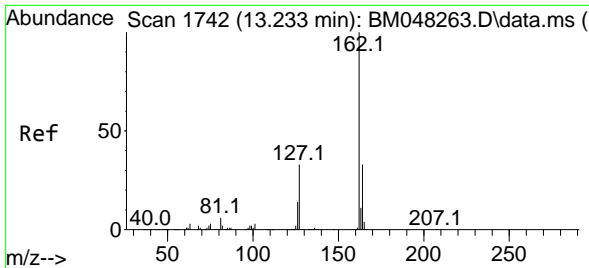


#43
 1,1'-Biphenyl
 Concen: 29.568 ng/uI
 RT: 13.192 min Scan# 1735
 Delta R.T. -0.006 min
 Lab File: BM048278.D
 Acq: 29 Oct 2024 06:23

Tgt Ion:154 Resp: 1556719

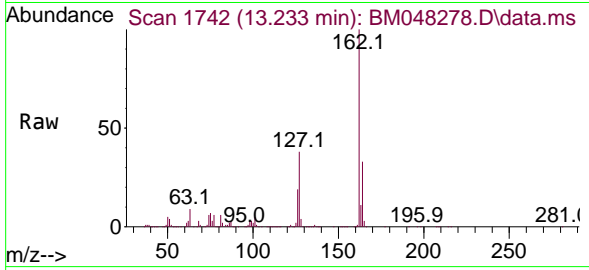
Ion	Ratio	Lower	Upper
154	100		
153	39.9	32.0	48.0
76	12.8	9.5	14.3





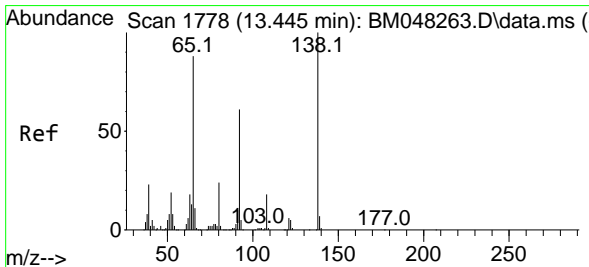
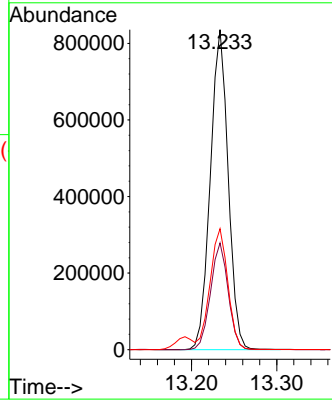
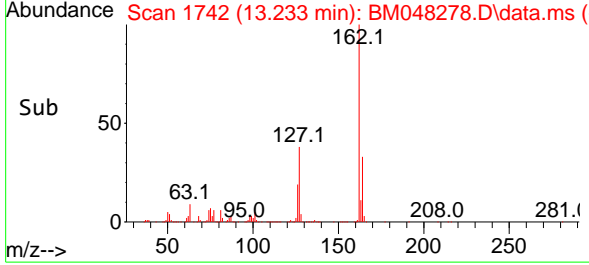
#44
 2-Chloronaphthalene
 Concen: 29.800 ng/uI
 RT: 13.233 min Scan# 1742
 Delta R.T. -0.006 min
 Lab File: BM048278.D
 Acq: 29 Oct 2024 06:23

Instrument : BNA_M
 ClientSampleId : SLCS423

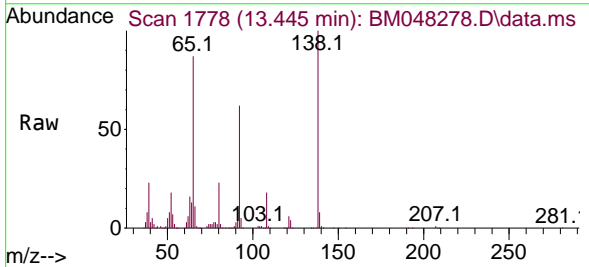


Tgt Ion:162 Resp: 1215786

Ion	Ratio	Lower	Upper
162	100		
164	33.3	26.3	39.5
127	37.8	29.4	44.0

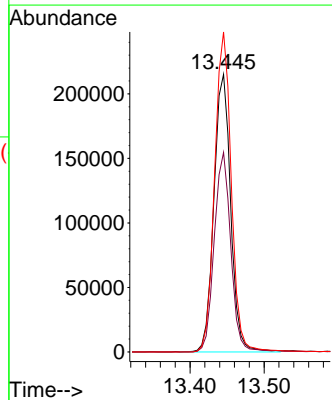
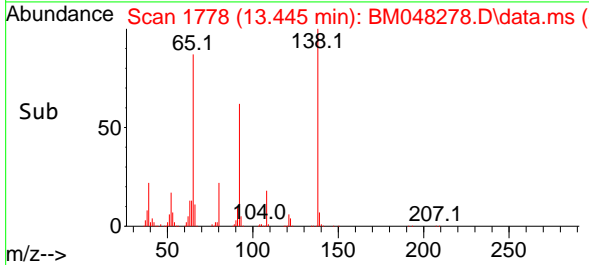


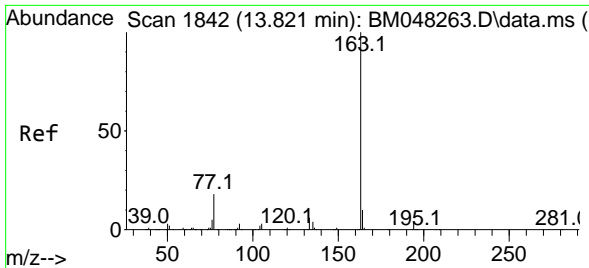
#45
 2-Nitroaniline
 Concen: 29.969 ng/uI
 RT: 13.445 min Scan# 1778
 Delta R.T. -0.006 min
 Lab File: BM048278.D
 Acq: 29 Oct 2024 06:23



Tgt Ion: 65 Resp: 338376

Ion	Ratio	Lower	Upper
65	100		
92	71.9	54.3	81.5
138	115.3	90.2	135.4



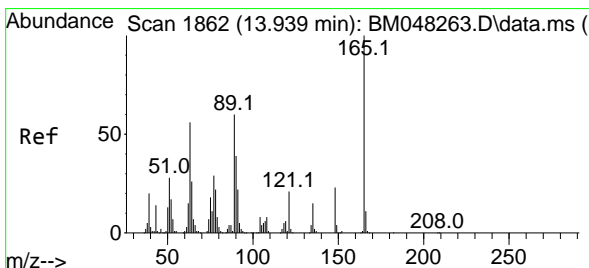
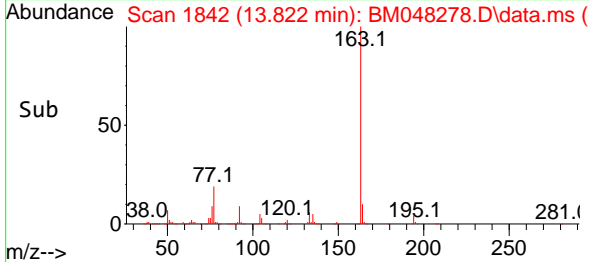
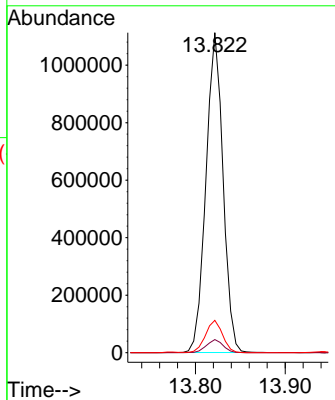
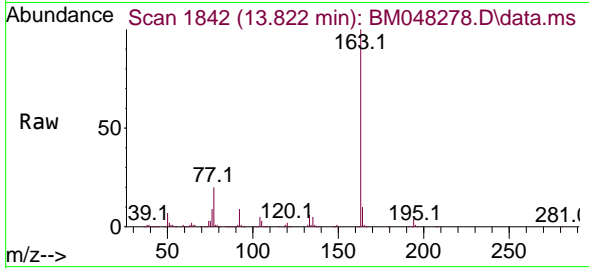


#47
 Dimethylphthalate
 Concen: 28.533 ng/ul
 RT: 13.822 min Scan# 1842
 Delta R.T. -0.006 min
 Lab File: BM048278.D
 Acq: 29 Oct 2024 06:23

Instrument : BNA_M
 ClientSampleId : SLCS423

Tgt Ion:163 Resp: 1467997

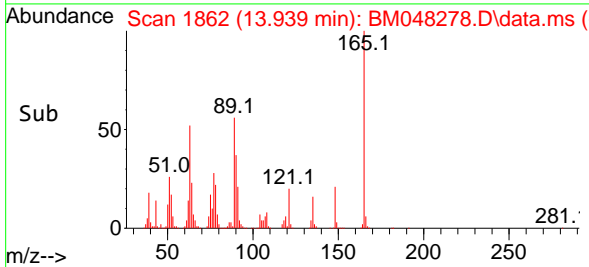
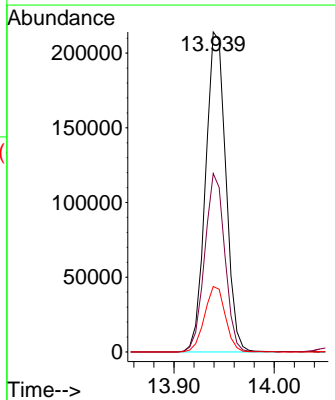
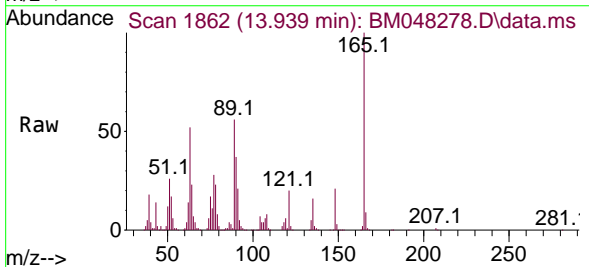
Ion	Ratio	Lower	Upper
163	100		
194	4.1	3.3	4.9
164	10.1	8.0	12.0

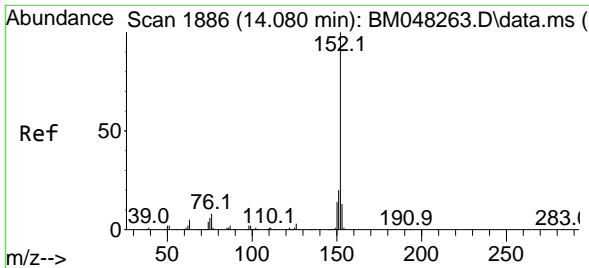


#48
 2,6-Dinitrotoluene
 Concen: 30.141 ng/ul
 RT: 13.939 min Scan# 1862
 Delta R.T. -0.006 min
 Lab File: BM048278.D
 Acq: 29 Oct 2024 06:23

Tgt Ion:165 Resp: 301516

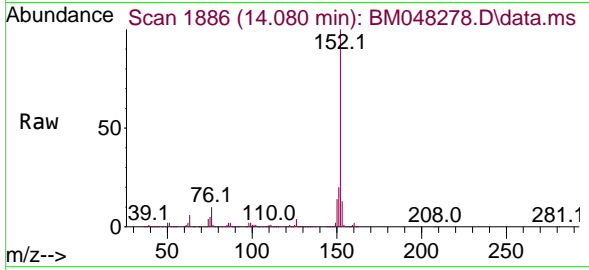
Ion	Ratio	Lower	Upper
165	100		
89	55.7	47.4	71.2
121	20.4	17.0	25.4



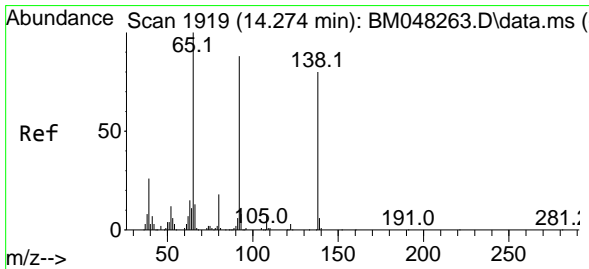
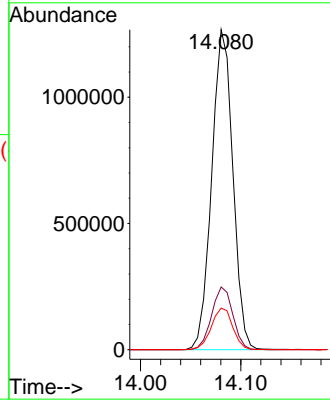
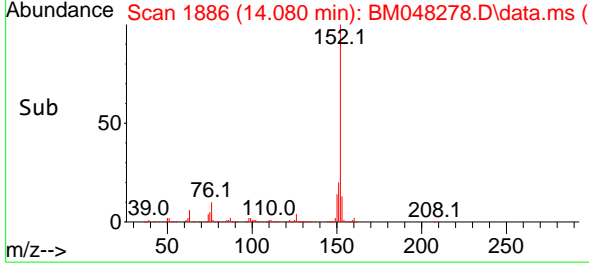


#50
 Acenaphthylene
 Concen: 29.385 ng/uI
 RT: 14.080 min Scan# 1886
 Delta R.T. -0.006 min
 Lab File: BM048278.D
 Acq: 29 Oct 2024 06:23

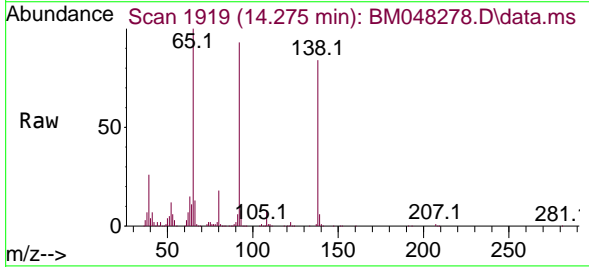
Instrument :
 BNA_M
 ClientSampleId :
 SLCS423



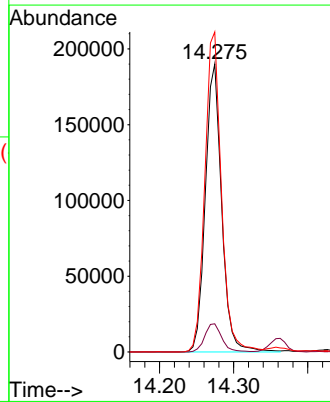
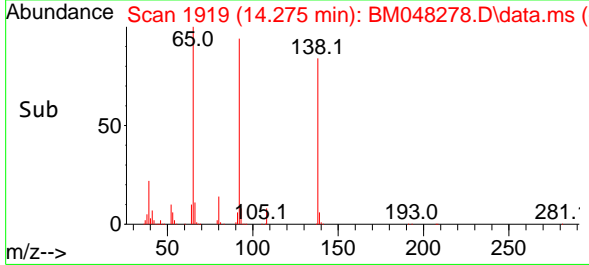
Tgt Ion:152 Resp: 1856563
 Ion Ratio Lower Upper
 152 100
 151 19.6 15.7 23.5
 153 13.0 10.6 16.0

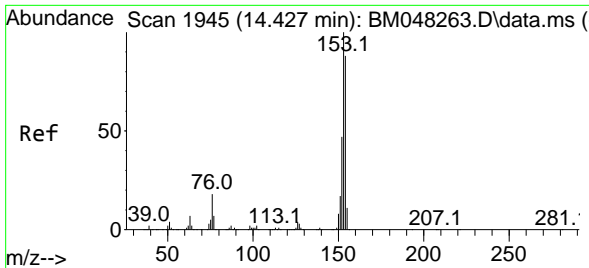


#51
 3-Nitroaniline
 Concen: 27.681 ng/uI
 RT: 14.275 min Scan# 1919
 Delta R.T. 0.000 min
 Lab File: BM048278.D
 Acq: 29 Oct 2024 06:23



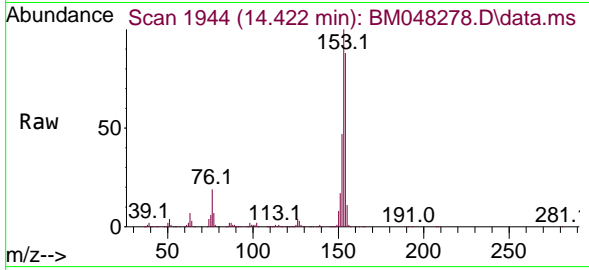
Tgt Ion:138 Resp: 291480
 Ion Ratio Lower Upper
 138 100
 108 9.8 8.4 12.6
 92 111.1 88.6 132.8



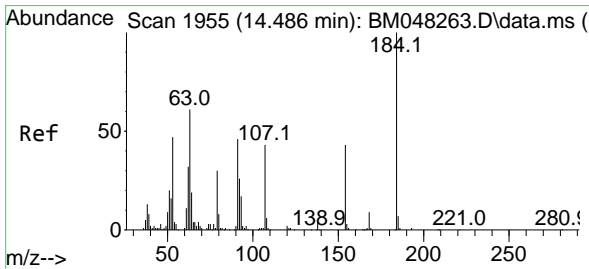
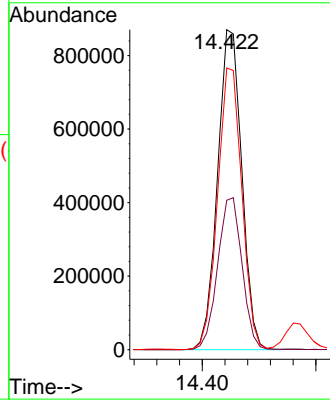
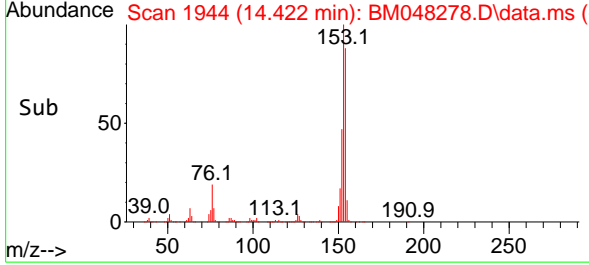


#52
 Acenaphthene
 Concen: 28.765 ng/u1
 RT: 14.422 min Scan# 1944
 Delta R.T. -0.006 min
 Lab File: BM048278.D
 Acq: 29 Oct 2024 06:23

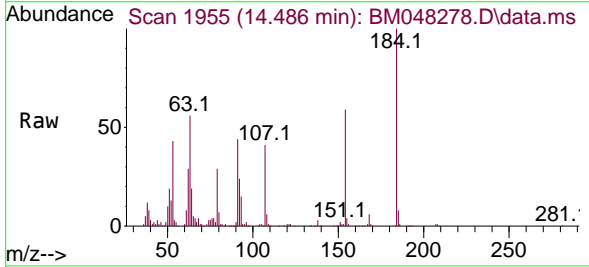
Instrument :
 BNA_M
 ClientSampleId :
 SLCS423



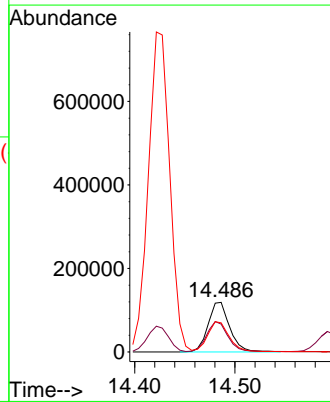
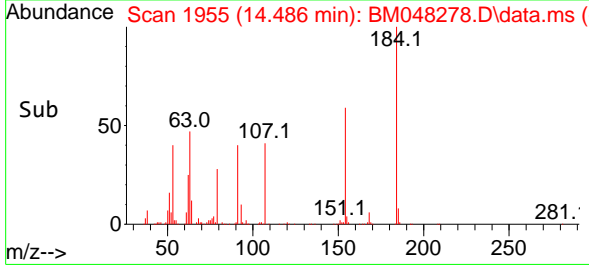
Tgt Ion:153 Resp: 1289630
 Ion Ratio Lower Upper
 153 100
 152 46.7 37.8 56.8
 154 88.1 71.2 106.8

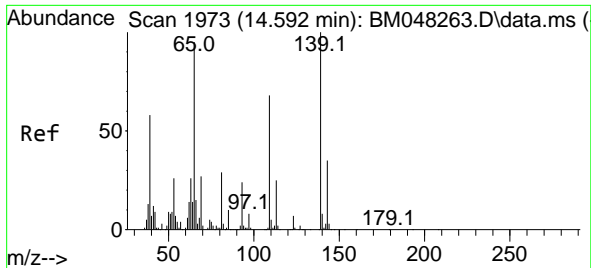


#53
 2,4-Dinitrophenol
 Concen: 26.307 ng/u1
 RT: 14.486 min Scan# 1955
 Delta R.T. 0.000 min
 Lab File: BM048278.D
 Acq: 29 Oct 2024 06:23



Tgt Ion:184 Resp: 178987
 Ion Ratio Lower Upper
 184 100
 63 56.0 54.1 81.1
 154 58.7 49.0 73.4

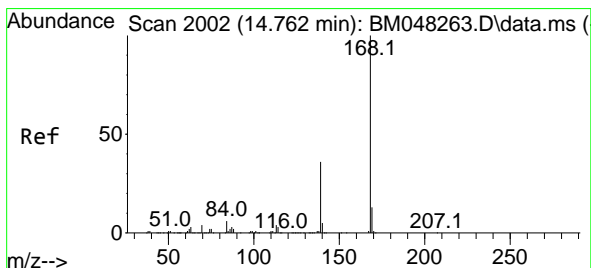
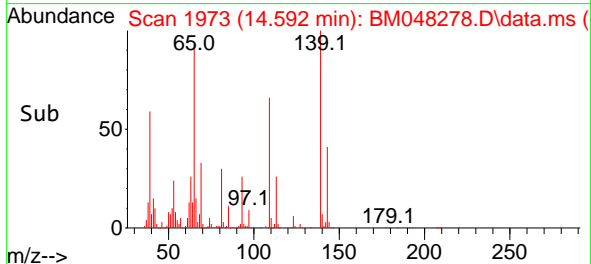
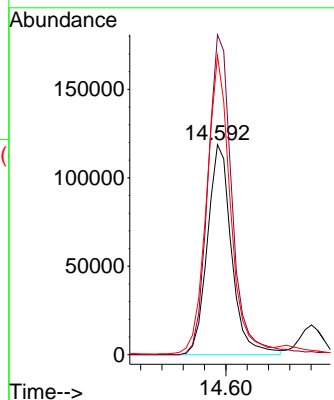
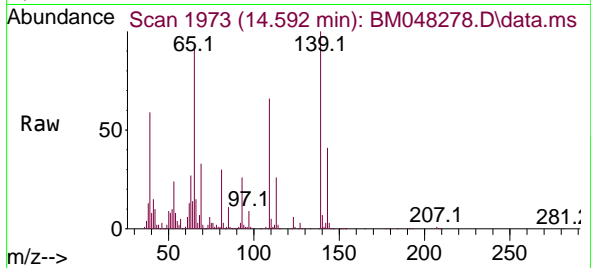




#55
 4-Nitrophenol
 Concen: 27.227 ng/ul
 RT: 14.592 min Scan# 1973
 Delta R.T. -0.006 min
 Lab File: BM048278.D
 Acq: 29 Oct 2024 06:23

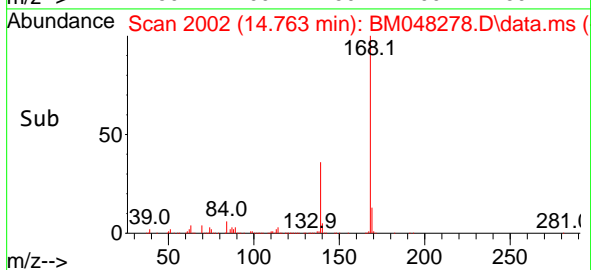
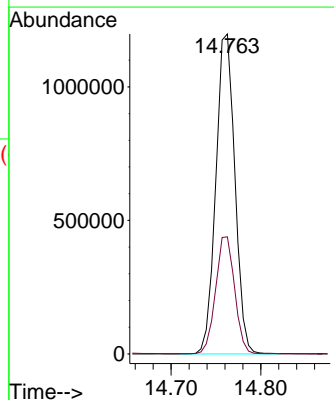
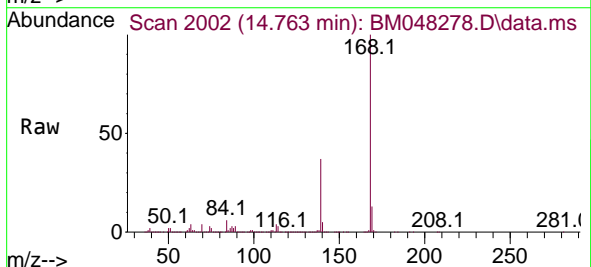
Instrument :
 BNA_M
 ClientSampleId :
 SLCS423

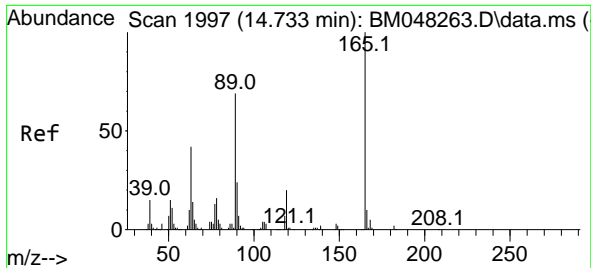
Tgt Ion:109 Resp: 186453
 Ion Ratio Lower Upper
 109 100
 139 152.3 118.1 177.1
 65 142.4 109.3 163.9



#56
 Dibenzofuran
 Concen: 28.619 ng/ul
 RT: 14.763 min Scan# 2002
 Delta R.T. 0.000 min
 Lab File: BM048278.D
 Acq: 29 Oct 2024 06:23

Tgt Ion:168 Resp: 1765218
 Ion Ratio Lower Upper
 168 100
 139 36.6 29.2 43.8



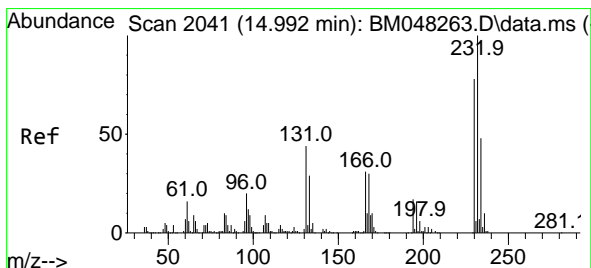
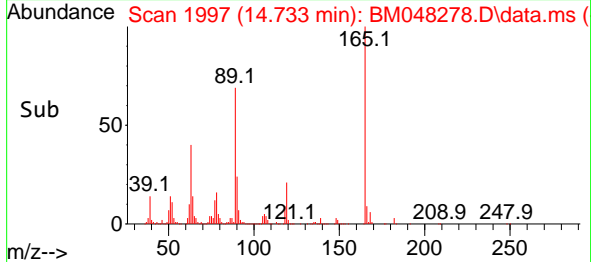
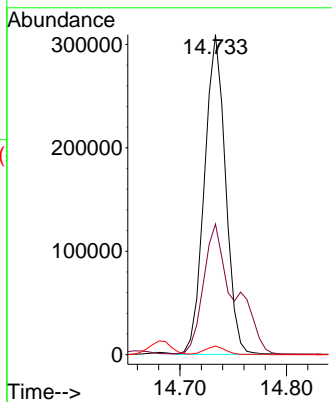
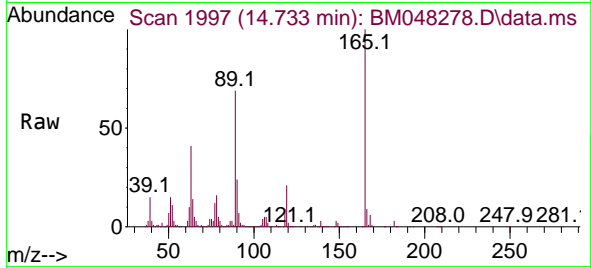


#57
 2,4-Dinitrotoluene
 Concen: 29.051 ng/ul
 RT: 14.733 min Scan# 1997
 Delta R.T. -0.006 min
 Lab File: BM048278.D
 Acq: 29 Oct 2024 06:23

Instrument :
 BNA_M
 ClientSampleId :
 SLCS423

Tgt Ion:165 Resp: 424874

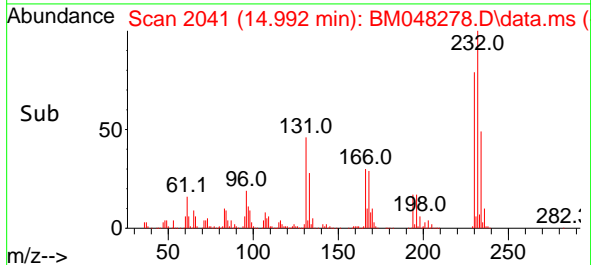
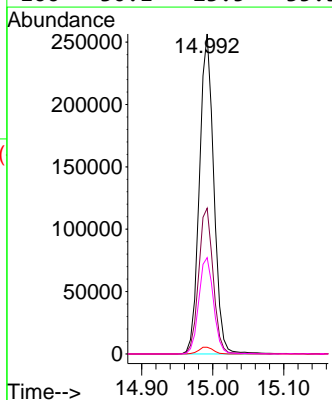
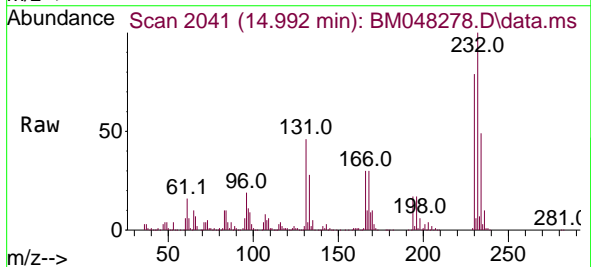
Ion	Ratio	Lower	Upper
165	100		
63	40.8	32.6	48.8
182	2.7	1.9	2.9

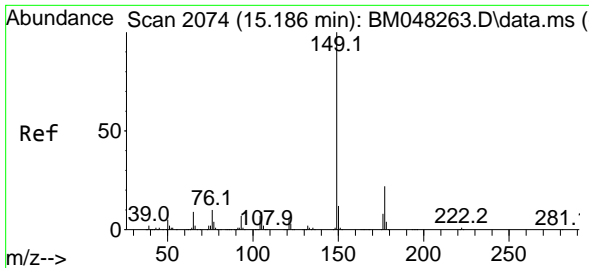


#58
 2,3,4,6-Tetrachlorophenol
 Concen: 28.508 ng/ul
 RT: 14.992 min Scan# 2041
 Delta R.T. -0.006 min
 Lab File: BM048278.D
 Acq: 29 Oct 2024 06:23

Tgt Ion:232 Resp: 362136

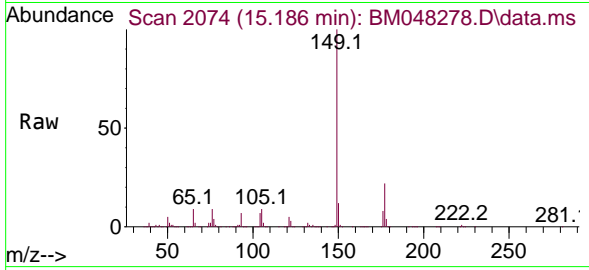
Ion	Ratio	Lower	Upper
232	100		
131	45.5	34.6	51.8
130	2.1	1.8	2.8
166	30.1	23.5	35.3



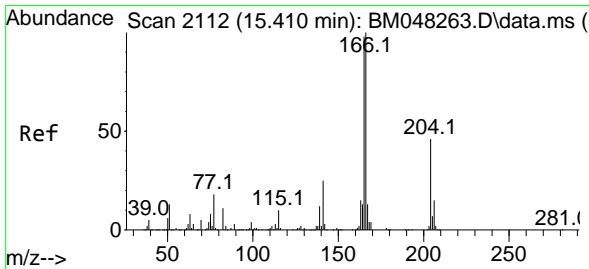
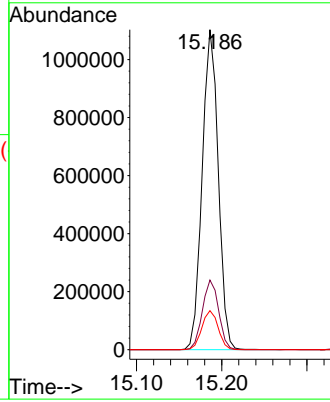
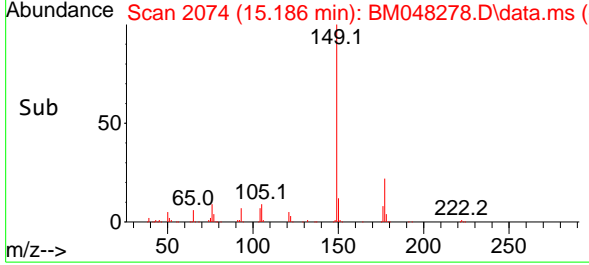


#59
 Diethylphthalate
 Concen: 27.888 ng/u1
 RT: 15.186 min Scan# 2074
 Delta R.T. -0.006 min
 Lab File: BM048278.D
 Acq: 29 Oct 2024 06:23

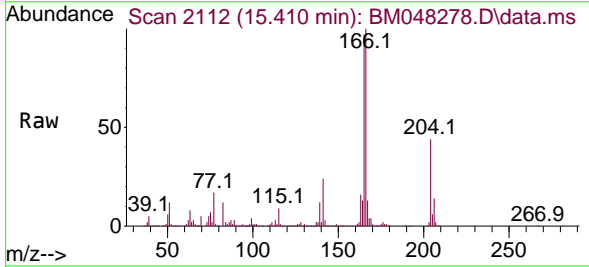
Instrument : BNA_M
 ClientSampleId : SLCS423



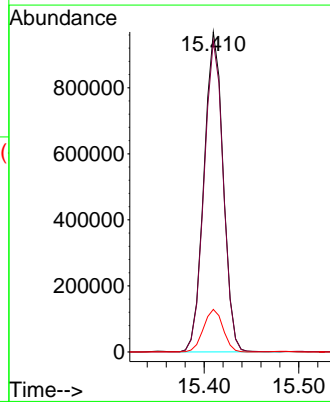
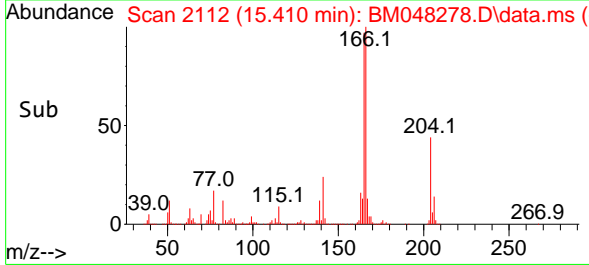
Tgt Ion:149 Resp: 1443494
 Ion Ratio Lower Upper
 149 100
 177 21.8 17.4 26.0
 150 12.2 9.7 14.5

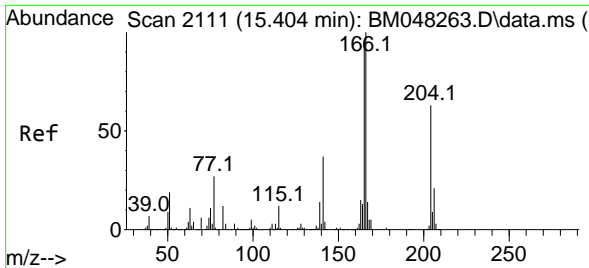


#61
 Fluorene
 Concen: 27.672 ng/u1
 RT: 15.410 min Scan# 2112
 Delta R.T. -0.006 min
 Lab File: BM048278.D
 Acq: 29 Oct 2024 06:23



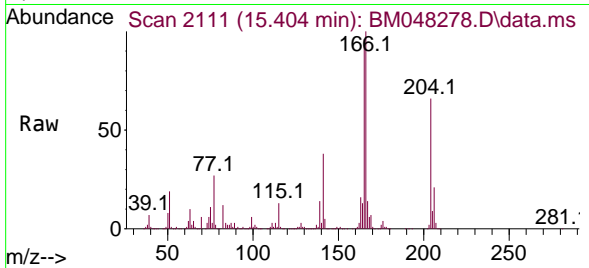
Tgt Ion:166 Resp: 1359077
 Ion Ratio Lower Upper
 166 100
 165 97.2 77.9 116.9
 167 13.3 10.6 16.0



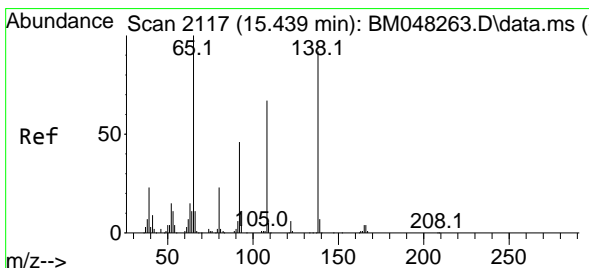
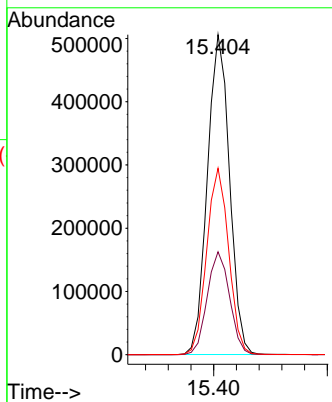
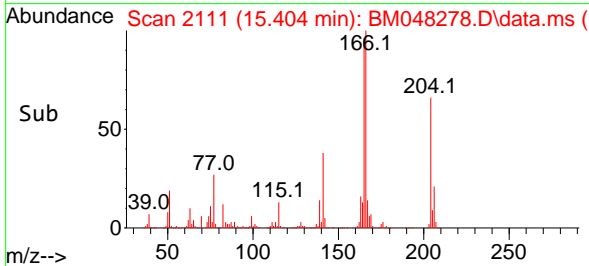


#62
 4-Chlorophenyl-phenylether
 Concen: 27.762 ng/ul
 RT: 15.404 min Scan# 2111
 Delta R.T. -0.006 min
 Lab File: BM048278.D
 Acq: 29 Oct 2024 06:23

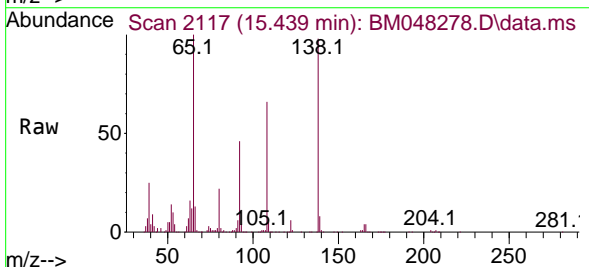
Instrument :
 BNA_M
 ClientSampleId :
 SLCS423



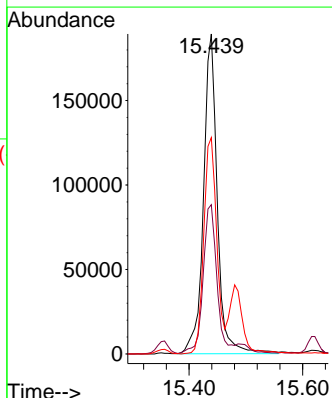
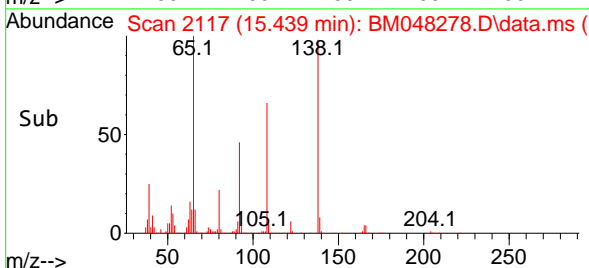
Tgt Ion:204 Resp: 684502
 Ion Ratio Lower Upper
 204 100
 206 32.2 25.9 38.9
 141 58.3 44.8 67.2

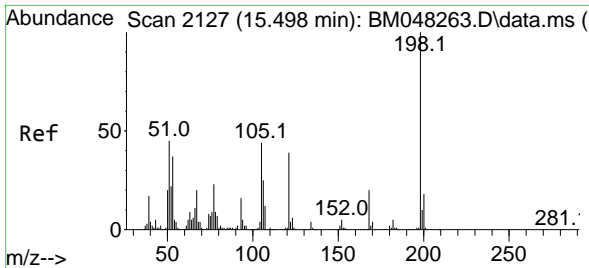


#63
 4-Nitroaniline
 Concen: 33.421 ng/ul
 RT: 15.439 min Scan# 2117
 Delta R.T. 0.000 min
 Lab File: BM048278.D
 Acq: 29 Oct 2024 06:23



Tgt Ion:138 Resp: 318660
 Ion Ratio Lower Upper
 138 100
 92 46.7 41.0 61.4
 108 67.6 57.8 86.8

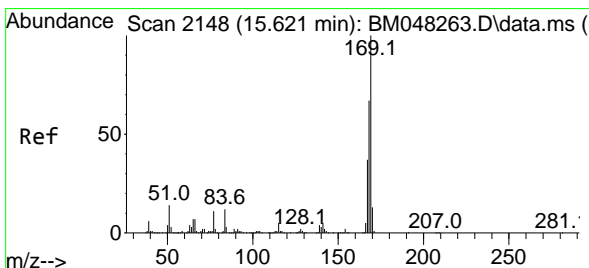
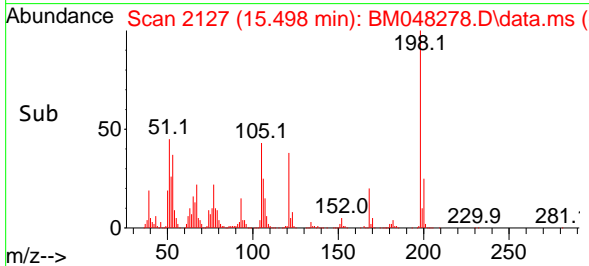
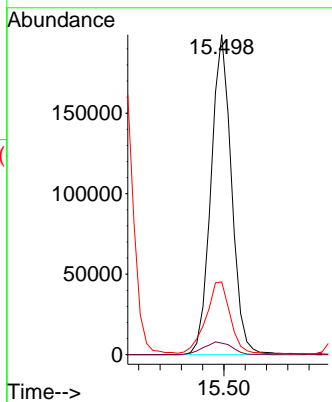
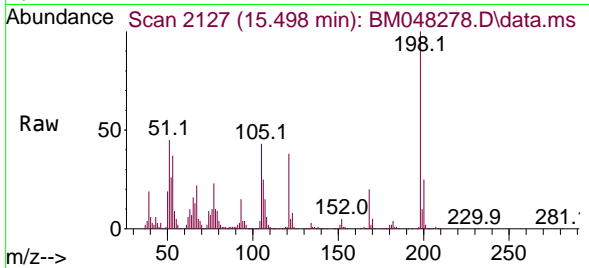




#66
 4,6-Dinitro-2-methylphenol
 Concen: 29.748 ng/ul
 RT: 15.498 min Scan# 2127
 Delta R.T. -0.006 min
 Lab File: BM048278.D
 Acq: 29 Oct 2024 06:23

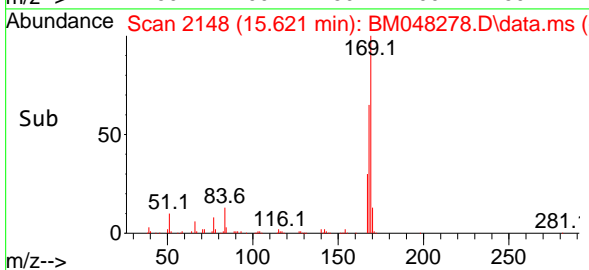
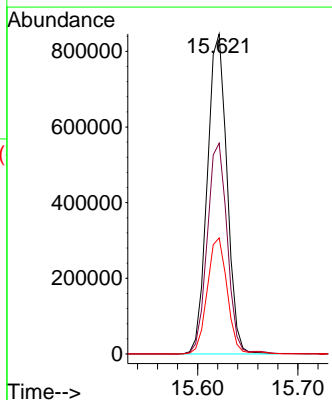
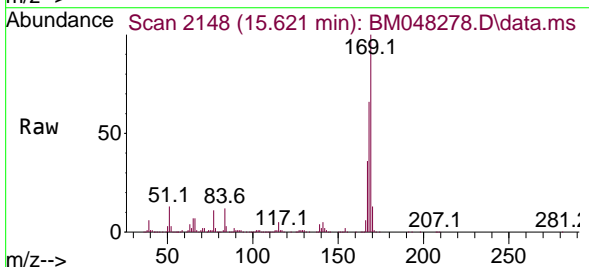
Instrument :
 BNA_M
 ClientSampleId :
 SLCS423

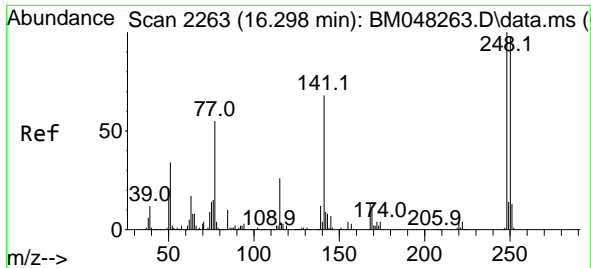
Tgt Ion:198 Resp: 265129
 Ion Ratio Lower Upper
 198 100
 182 3.6 3.6 5.4#
 77 22.8 17.1 25.7



#67
 N-Nitrosodiphenylamine
 Concen: 30.768 ng/ul
 RT: 15.621 min Scan# 2148
 Delta R.T. 0.000 min
 Lab File: BM048278.D
 Acq: 29 Oct 2024 06:23

Tgt Ion:169 Resp: 1155655
 Ion Ratio Lower Upper
 169 100
 168 65.8 54.0 81.0
 167 36.3 29.2 43.8

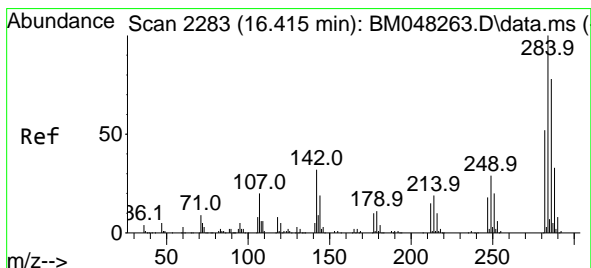
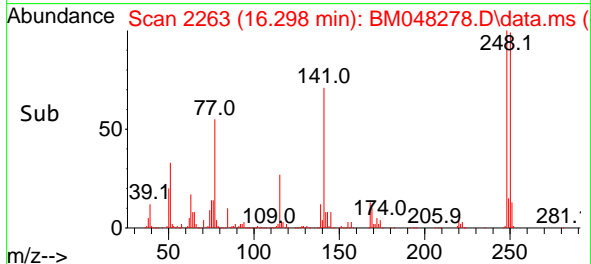
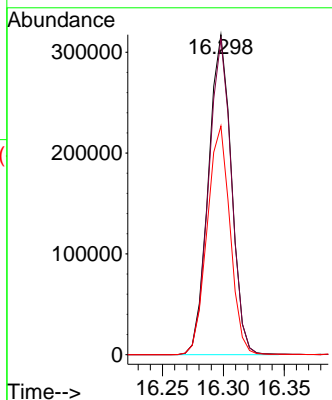
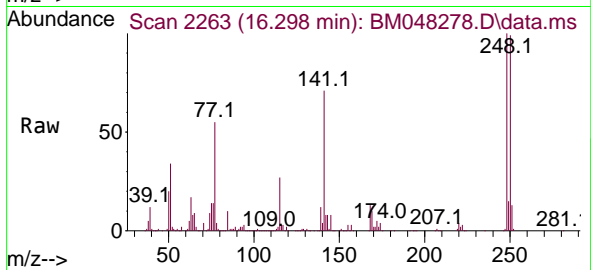




#68
 4-Bromophenyl-phenylether
 Concen: 30.458 ng/ul
 RT: 16.298 min Scan# 21
 Delta R.T. -0.006 min
 Lab File: BM048278.D
 Acq: 29 Oct 2024 06:23

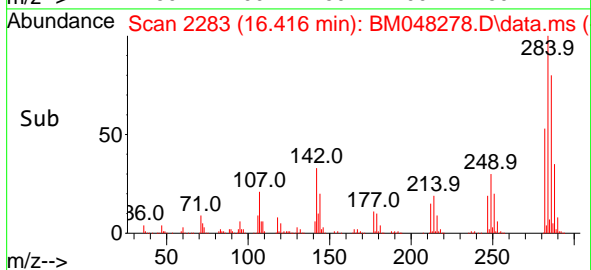
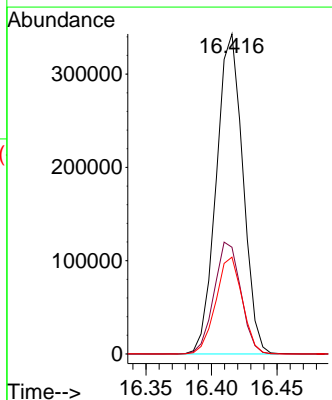
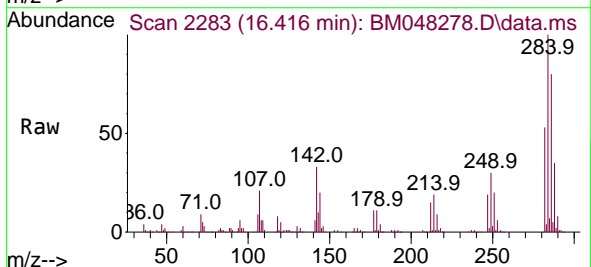
Instrument :
 BNA_M
 ClientSampleId :
 SLCS423

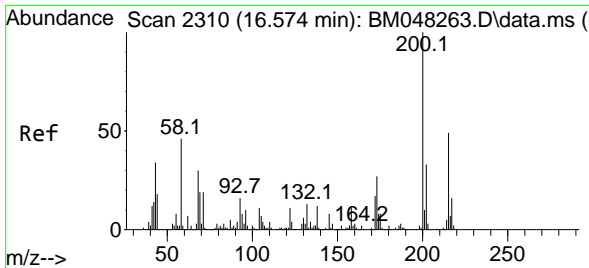
Tgt Ion:248 Resp: 418045
 Ion Ratio Lower Upper
 248 100
 250 98.6 77.2 115.8
 141 71.4 54.5 81.7



#69
 Hexachlorobenzene
 Concen: 29.458 ng/ul
 RT: 16.416 min Scan# 2283
 Delta R.T. 0.000 min
 Lab File: BM048278.D
 Acq: 29 Oct 2024 06:23

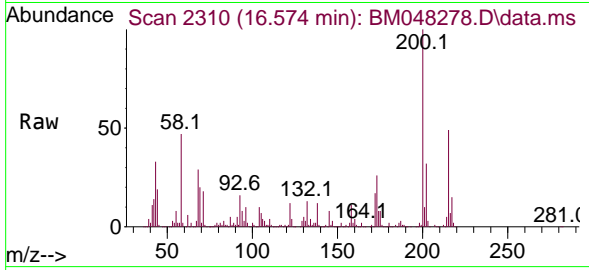
Tgt Ion:284 Resp: 483771
 Ion Ratio Lower Upper
 284 100
 142 33.3 28.3 42.5
 249 30.3 23.8 35.8



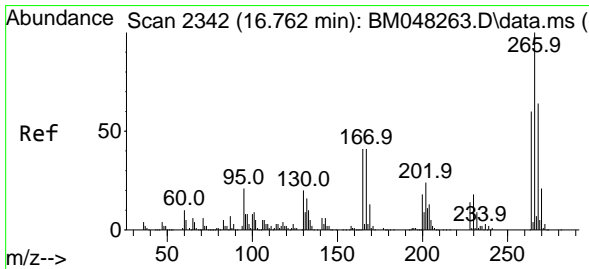
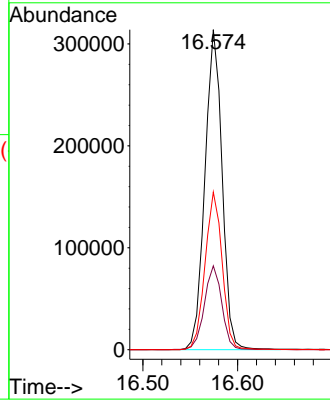
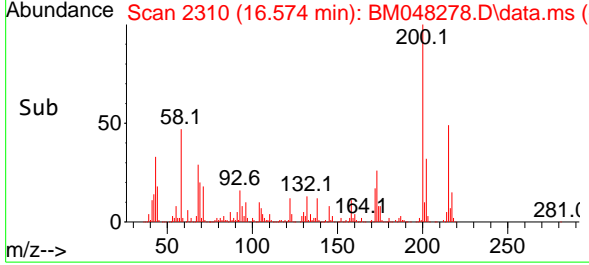


#70
 Atrazine
 Concen: 30.742 ng/uI
 RT: 16.574 min Scan# 21
 Delta R.T. -0.006 min
 Lab File: BM048278.D
 Acq: 29 Oct 2024 06:23

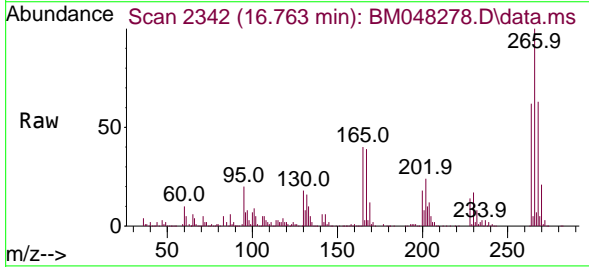
Instrument :
 BNA_M
 ClientSampleId :
 SLCS423



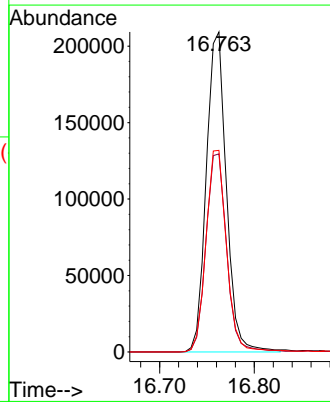
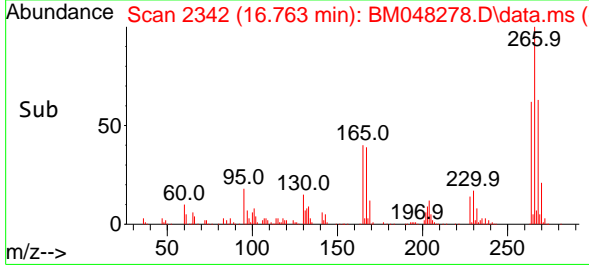
Tgt Ion:200 Resp: 395340
 Ion Ratio Lower Upper
 200 100
 173 26.2 20.6 31.0
 215 49.3 38.4 57.6

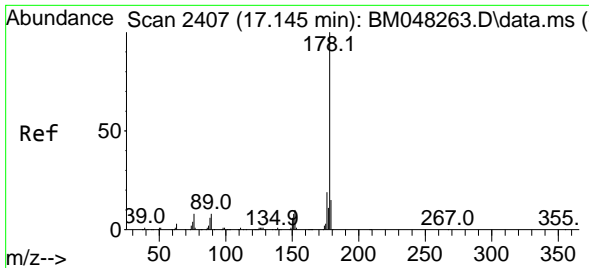


#71
 Pentachlorophenol
 Concen: 29.567 ng/uI
 RT: 16.763 min Scan# 2342
 Delta R.T. 0.000 min
 Lab File: BM048278.D
 Acq: 29 Oct 2024 06:23



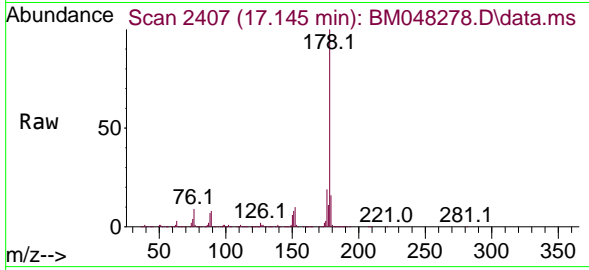
Tgt Ion:266 Resp: 307225
 Ion Ratio Lower Upper
 266 100
 264 61.9 52.2 78.2
 268 63.0 51.2 76.8



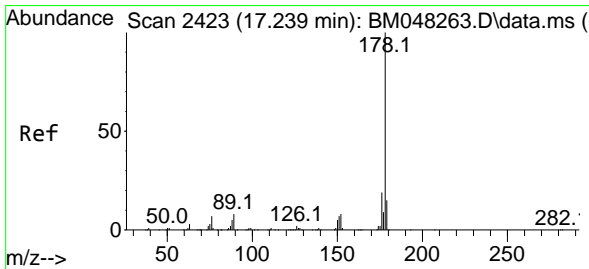
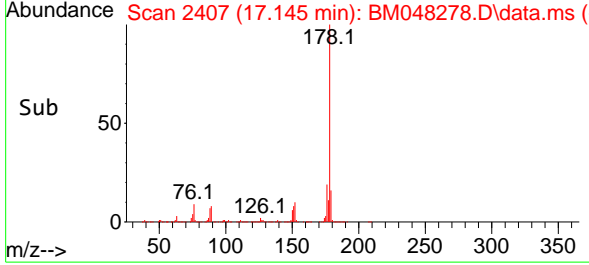
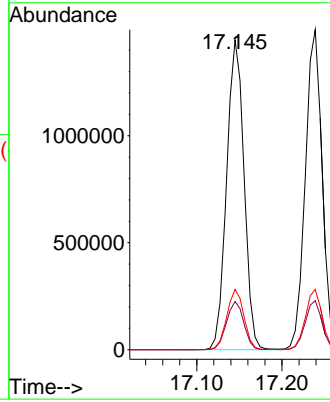


#72
 Phenanthrene
 Concen: 29.477 ng/u1
 RT: 17.145 min Scan# 2407
 Delta R.T. -0.006 min
 Lab File: BM048278.D
 Acq: 29 Oct 2024 06:23

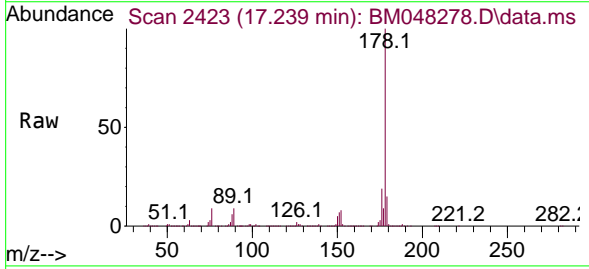
Instrument :
 BNA_M
 ClientSampleId :
 SLCS423



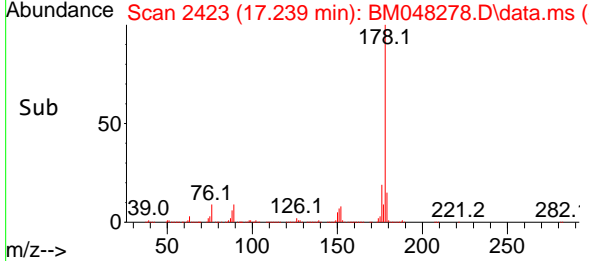
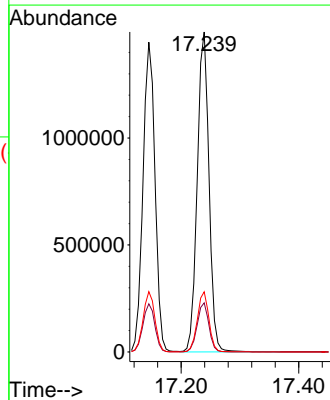
Tgt Ion:178 Resp: 2053333
 Ion Ratio Lower Upper
 178 100
 179 15.6 12.6 18.8
 176 19.5 15.4 23.2

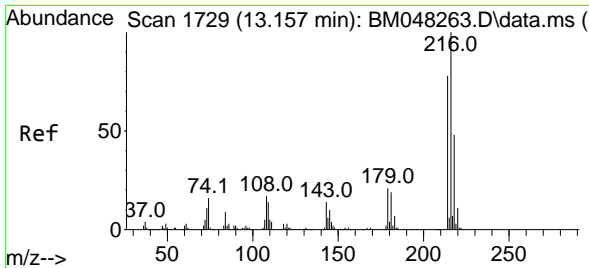


#74
 Anthracene
 Concen: 29.677 ng/u1
 RT: 17.239 min Scan# 2423
 Delta R.T. 0.000 min
 Lab File: BM048278.D
 Acq: 29 Oct 2024 06:23



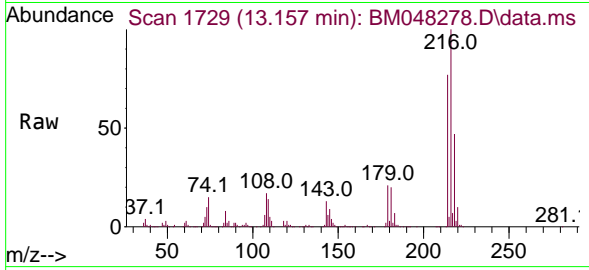
Tgt Ion:178 Resp: 2069193
 Ion Ratio Lower Upper
 178 100
 179 15.4 12.6 18.8
 176 18.8 15.1 22.7



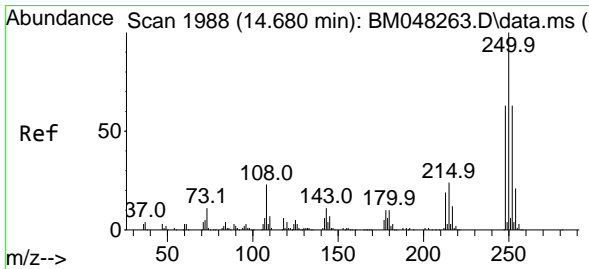
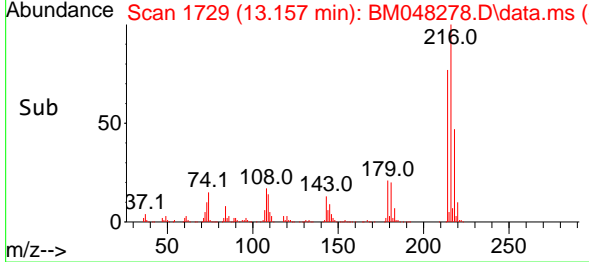
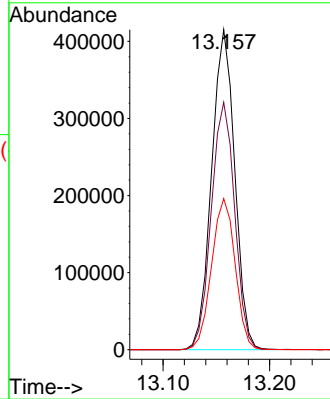


#75
 1,2,3,4-Tetrachlorobenzene
 Concen: 31.437 ng/uL
 RT: 13.157 min Scan# 11
 Delta R.T. -0.006 min
 Lab File: BM048278.D
 Acq: 29 Oct 2024 06:23

Instrument :
 BNA_M
 ClientSampleId :
 SLCS423

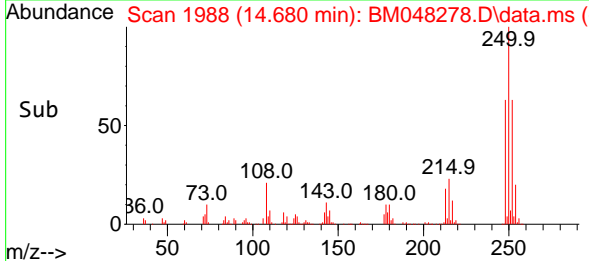
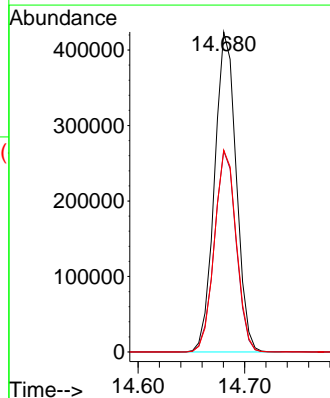
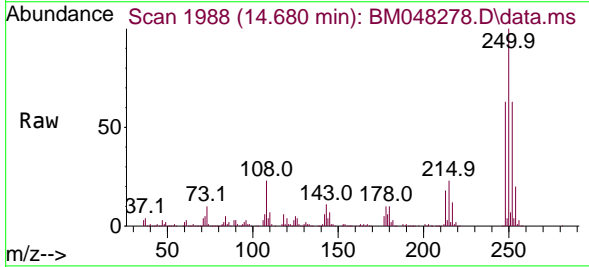


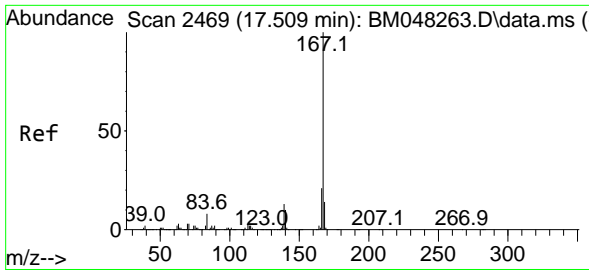
Tgt Ion:216 Resp: 625864
 Ion Ratio Lower Upper
 216 100
 214 77.3 63.7 95.5
 218 47.2 38.3 57.5



#76
 Pentachlorobenzene
 Concen: 29.502 ng/uL
 RT: 14.680 min Scan# 1988
 Delta R.T. -0.006 min
 Lab File: BM048278.D
 Acq: 29 Oct 2024 06:23

Tgt Ion:250 Resp: 597730
 Ion Ratio Lower Upper
 250 100
 248 62.8 49.9 74.9
 252 63.1 50.2 75.4



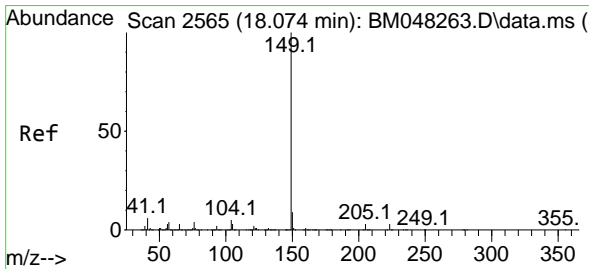
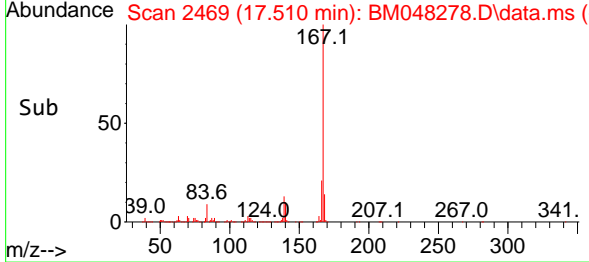
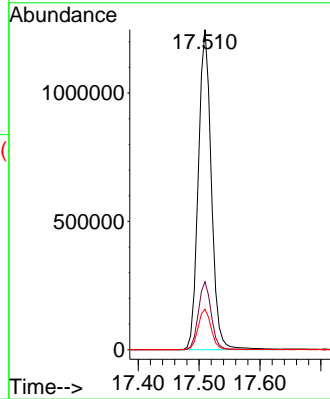
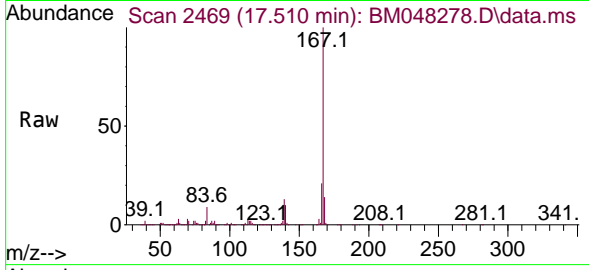


#77
 Carbazole
 Concen: 30.336 ng/uI
 RT: 17.510 min Scan# 2469
 Delta R.T. -0.006 min
 Lab File: BM048278.D
 Acq: 29 Oct 2024 06:23

Instrument :
 BNA_M
 ClientSampleId :
 SLCS423

Tgt Ion:167 Resp: 1857164

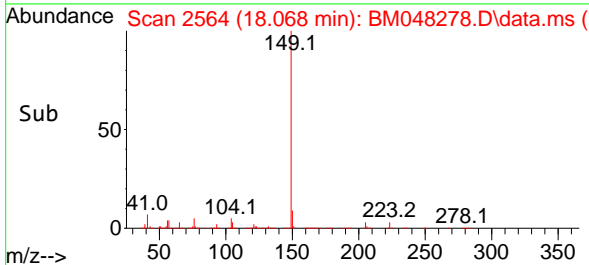
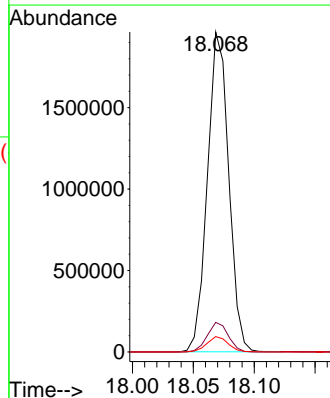
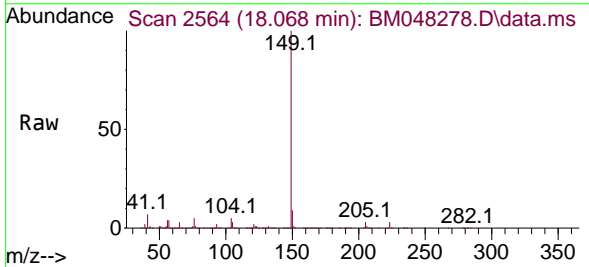
Ion	Ratio	Lower	Upper
167	100		
166	21.2	17.0	25.6
139	12.7	10.1	15.1

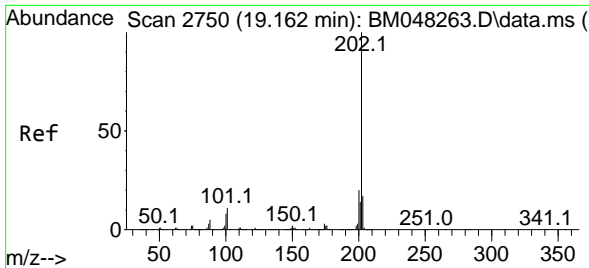


#78
 Di-n-butylphthalate
 Concen: 29.697 ng/uI
 RT: 18.068 min Scan# 2564
 Delta R.T. -0.006 min
 Lab File: BM048278.D
 Acq: 29 Oct 2024 06:23

Tgt Ion:149 Resp: 2389116

Ion	Ratio	Lower	Upper
149	100		
150	9.2	7.3	10.9
104	4.8	3.9	5.9



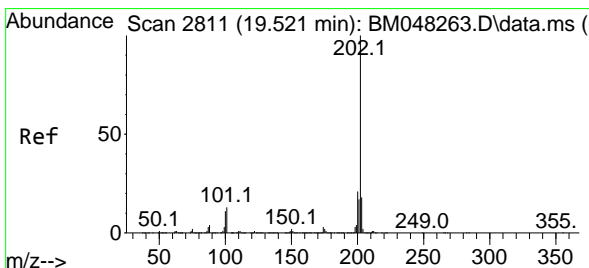
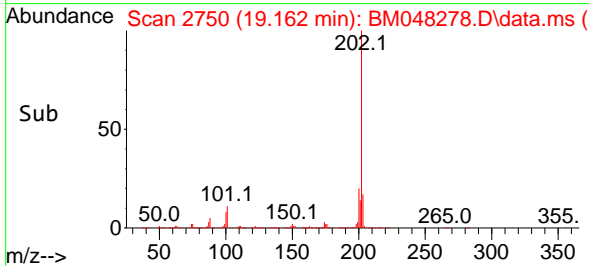
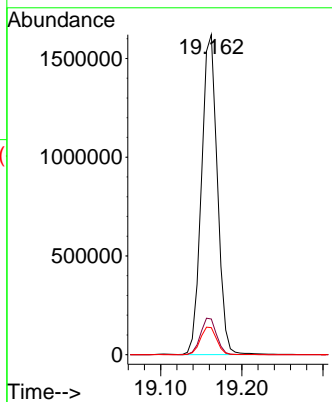
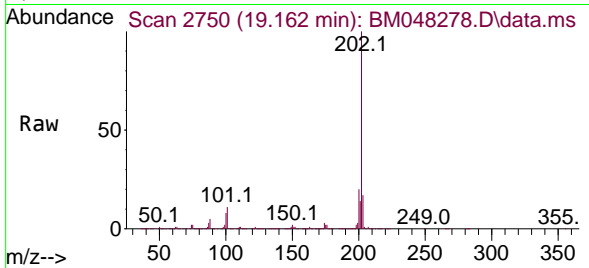


#80
 Fluoranthene
 Concen: 31.892 ng/u1
 RT: 19.162 min Scan# 21
 Delta R.T. -0.006 min
 Lab File: BM048278.D
 Acq: 29 Oct 2024 06:23

Instrument :
 BNA_M
 ClientSampleId :
 SLCS423

Tgt Ion:202 Resp: 2197911

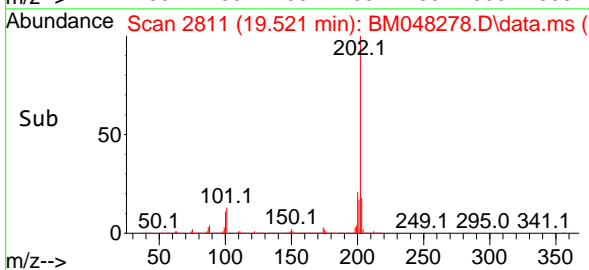
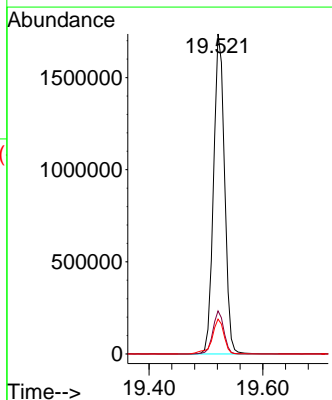
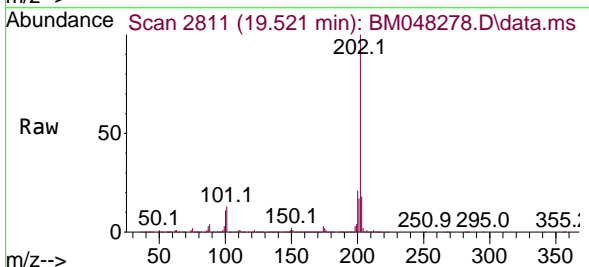
Ion	Ratio	Lower	Upper
202	100		
101	11.1	8.2	12.2
100	8.5	6.5	9.7

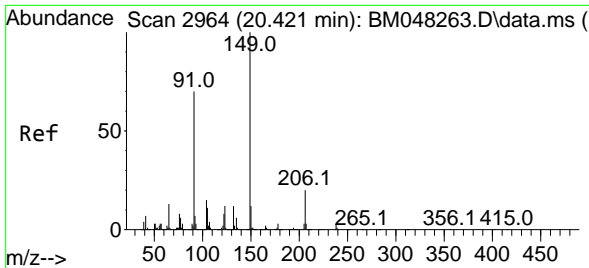


#82
 Pyrene
 Concen: 31.455 ng/u1
 RT: 19.521 min Scan# 2811
 Delta R.T. -0.006 min
 Lab File: BM048278.D
 Acq: 29 Oct 2024 06:23

Tgt Ion:202 Resp: 2324284

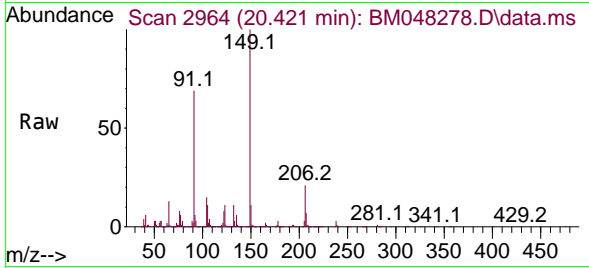
Ion	Ratio	Lower	Upper
202	100		
101	13.5	10.1	15.1
100	10.9	8.3	12.5



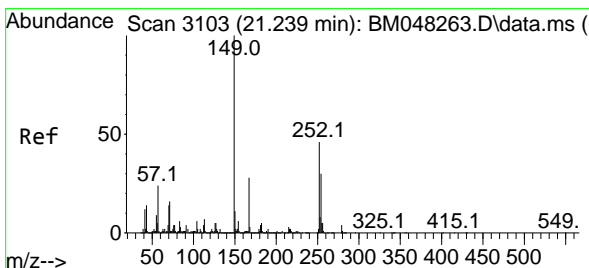
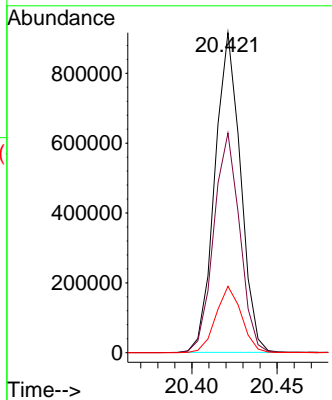
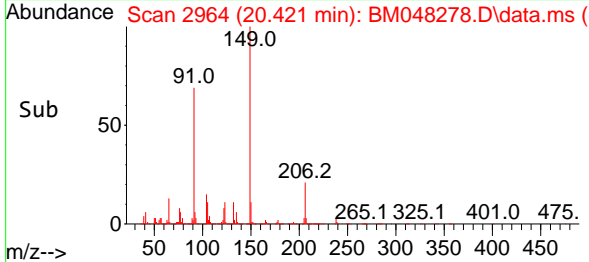


#83
 Butylbenzylphthalate
 Concen: 31.403 ng/ul
 RT: 20.421 min Scan# 2964
 Delta R.T. -0.006 min
 Lab File: BM048278.D
 Acq: 29 Oct 2024 06:23

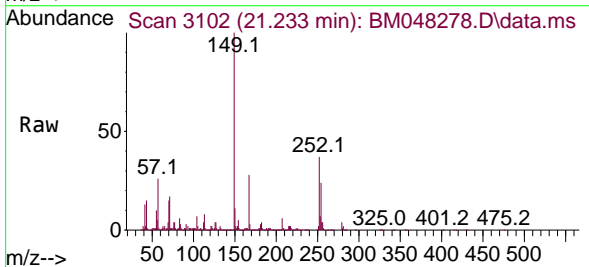
Instrument :
 BNA_M
 ClientSampleId :
 SLCS423



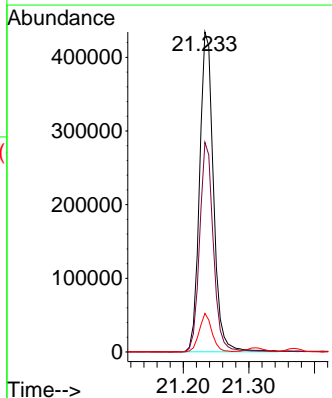
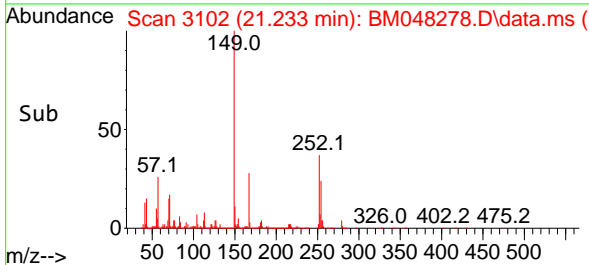
Tgt Ion:149 Resp: 958921
 Ion Ratio Lower Upper
 149 100
 91 68.7 54.2 81.2
 206 20.7 16.6 24.8

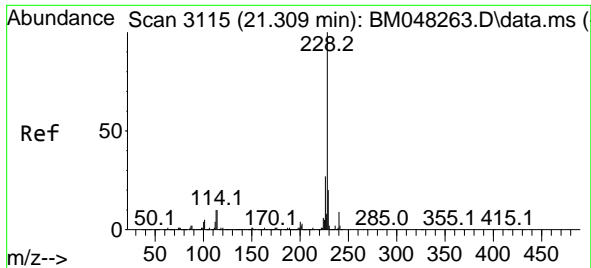


#84
 3,3'-Dichlorobenzidine
 Concen: 30.054 ng/ul
 RT: 21.233 min Scan# 3102
 Delta R.T. -0.006 min
 Lab File: BM048278.D
 Acq: 29 Oct 2024 06:23



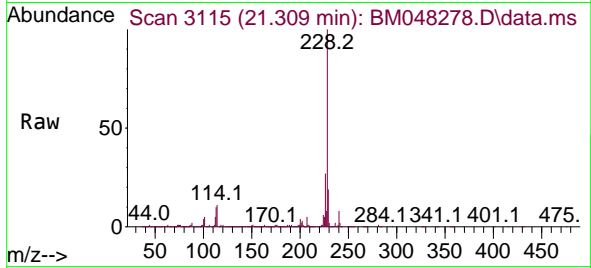
Tgt Ion:252 Resp: 640036
 Ion Ratio Lower Upper
 252 100
 254 65.5 51.3 76.9
 126 12.0 9.0 13.6



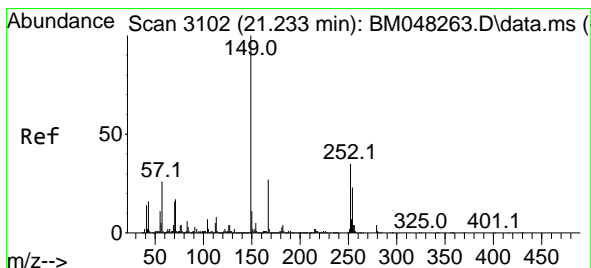
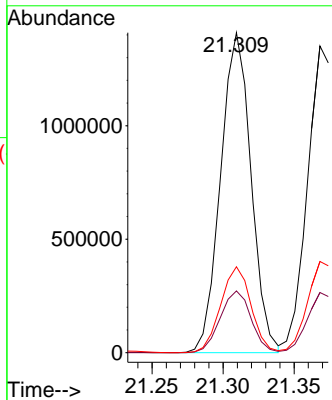
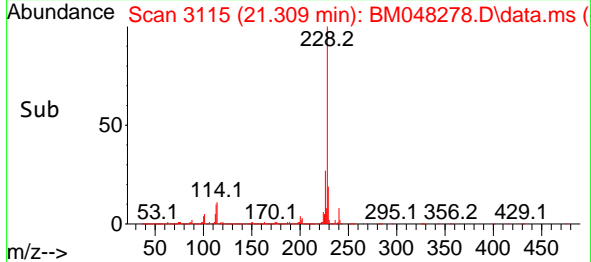


#85
 Benzo(a)anthracene
 Concen: 29.902 ng/ul
 RT: 21.309 min Scan# 3115
 Delta R.T. -0.006 min
 Lab File: BM048278.D
 Acq: 29 Oct 2024 06:23

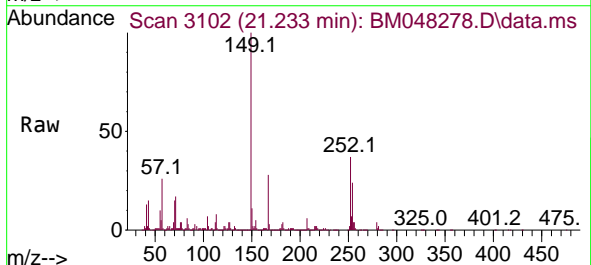
Instrument : BNA_M
 ClientSampleId : SLCS423



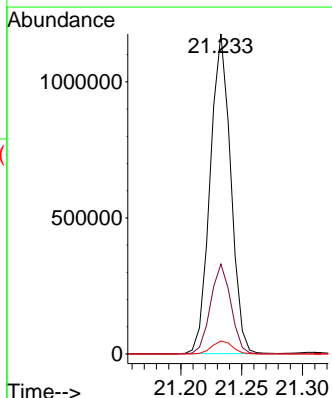
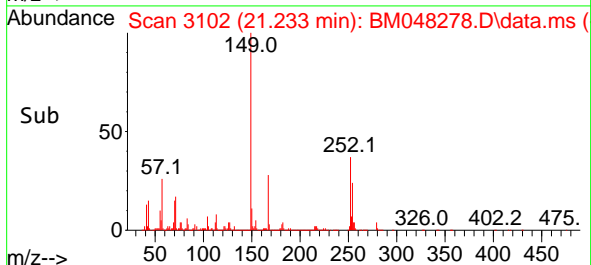
Tgt Ion:228 Resp: 2104709
 Ion Ratio Lower Upper
 228 100
 229 19.3 15.4 23.2
 226 26.8 21.6 32.4

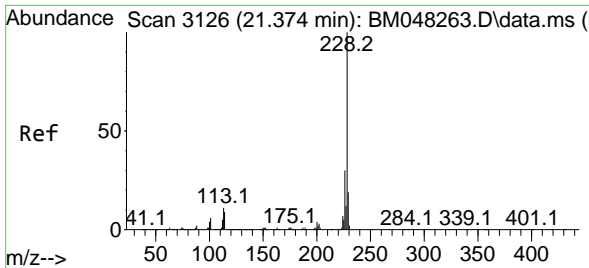


#86
 Bis(2-ethylhexyl)phthalate
 Concen: 31.381 ng/ul
 RT: 21.233 min Scan# 3102
 Delta R.T. -0.006 min
 Lab File: BM048278.D
 Acq: 29 Oct 2024 06:23



Tgt Ion:149 Resp: 1380819
 Ion Ratio Lower Upper
 149 100
 167 28.1 22.9 34.3
 279 4.1 3.3 4.9

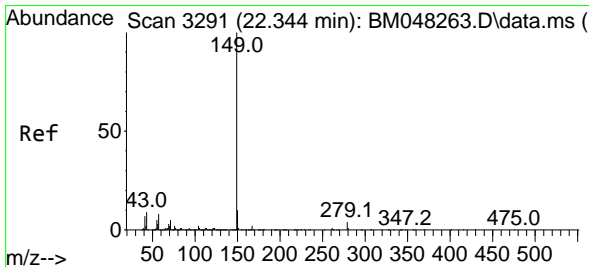
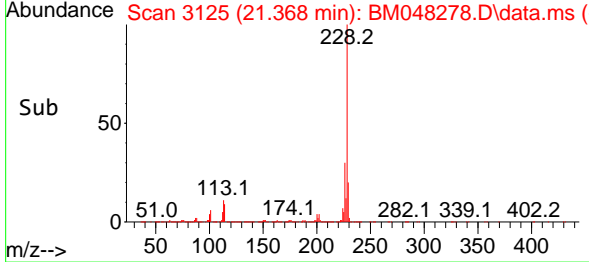
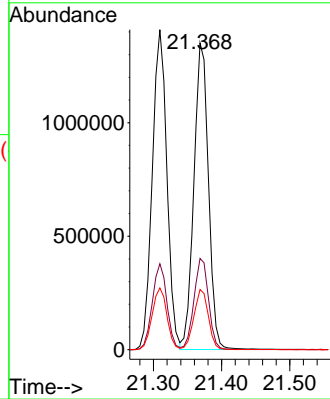
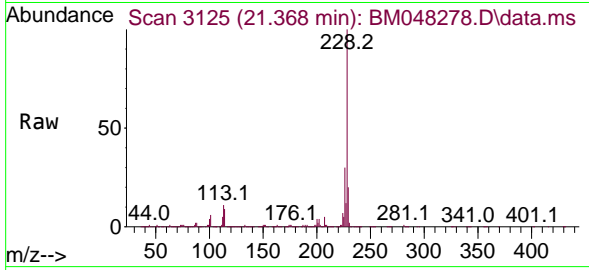




#87
 Chrysene
 Concen: 30.185 ng/u1
 RT: 21.368 min Scan# 3125
 Delta R.T. -0.006 min
 Lab File: BM048278.D
 Acq: 29 Oct 2024 06:23

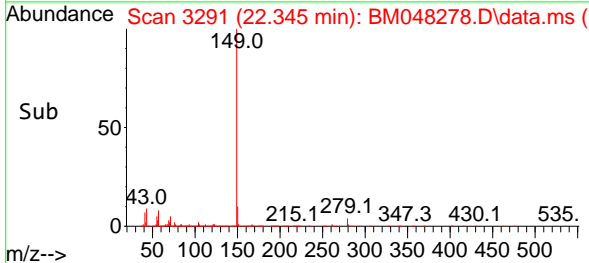
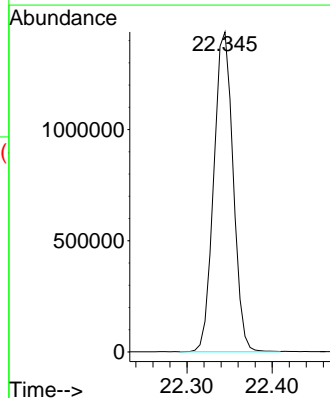
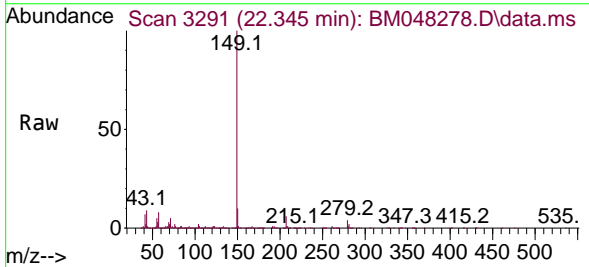
Instrument :
 BNA_M
 ClientSampleId :
 SLCS423

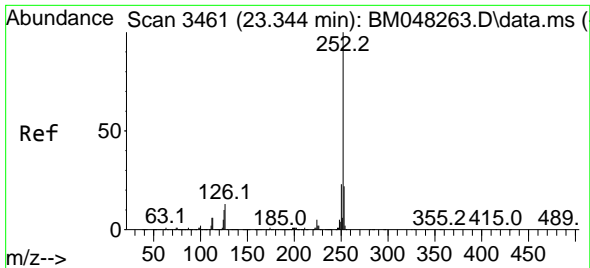
Tgt Ion:228 Resp: 1997903
 Ion Ratio Lower Upper
 228 100
 226 29.7 24.2 36.2
 229 19.6 15.5 23.3



#89
 Di-n-octyl phthalate
 Concen: 29.829 ng/u1
 RT: 22.345 min Scan# 3291
 Delta R.T. -0.006 min
 Lab File: BM048278.D
 Acq: 29 Oct 2024 06:23

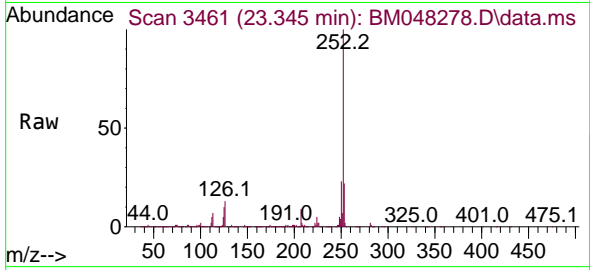
Tgt Ion:149 Resp: 2272999



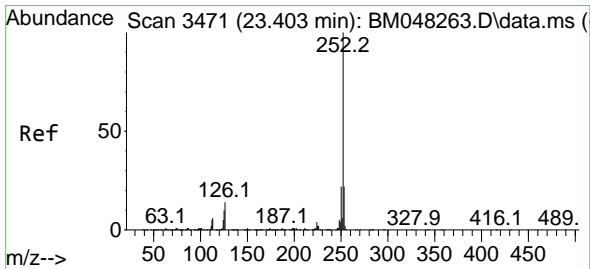
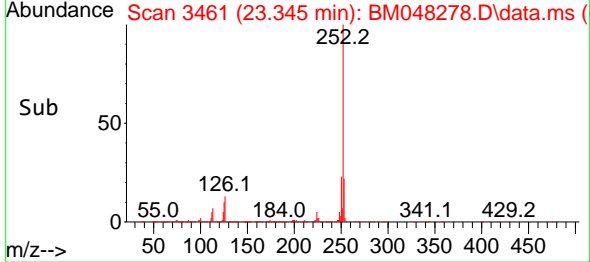
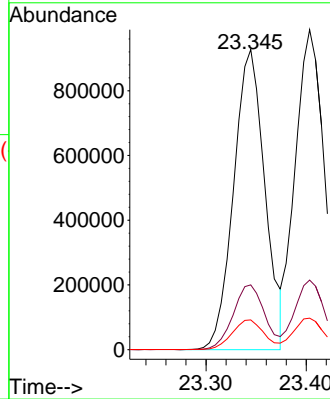


#90
 Benzo(b)fluoranthene
 Concen: 30.884 ng/ul
 RT: 23.345 min Scan# 3461
 Delta R.T. -0.006 min
 Lab File: BM048278.D
 Acq: 29 Oct 2024 06:23

Instrument : BNA_M
 ClientSampleId : SLCS423

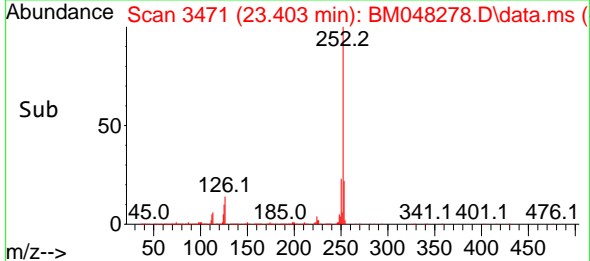
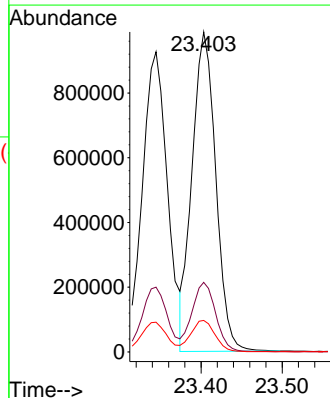
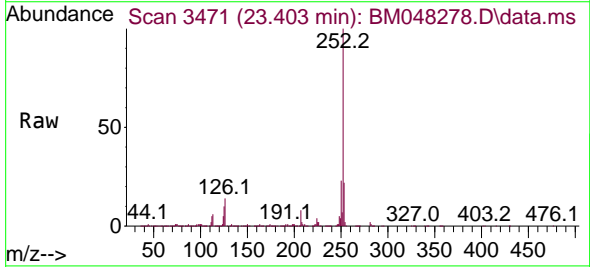


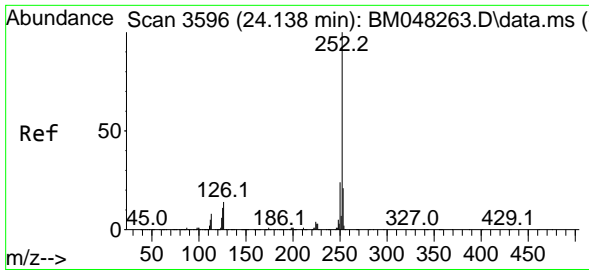
Tgt Ion:252 Resp: 2007455
 Ion Ratio Lower Upper
 252 100
 253 21.6 17.8 26.8
 125 9.9 7.8 11.6



#91
 Benzo(k)fluoranthene
 Concen: 30.777 ng/ul
 RT: 23.403 min Scan# 3471
 Delta R.T. -0.012 min
 Lab File: BM048278.D
 Acq: 29 Oct 2024 06:23

Tgt Ion:252 Resp: 2003016
 Ion Ratio Lower Upper
 252 100
 253 21.7 17.4 26.2
 125 9.9 7.8 11.8



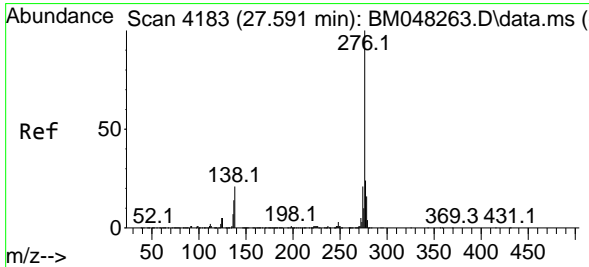
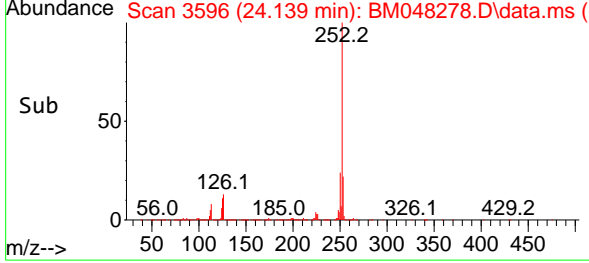
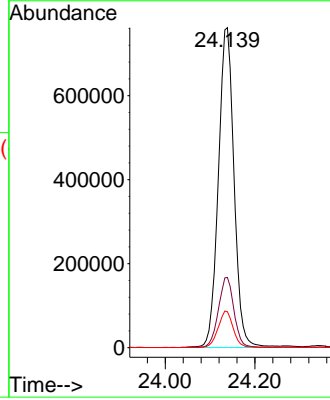
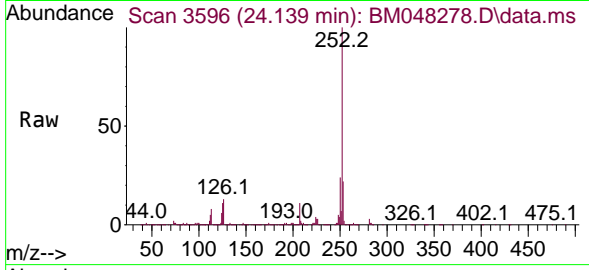


#93
 Benzo(a)pyrene
 Concen: 31.315 ng/ul
 RT: 24.139 min Scan# 31
 Delta R.T. -0.006 min
 Lab File: BM048278.D
 Acq: 29 Oct 2024 06:23

Instrument :
 BNA_M
 ClientSampleId :
 SLCS423

Tgt Ion:252 Resp: 1851704

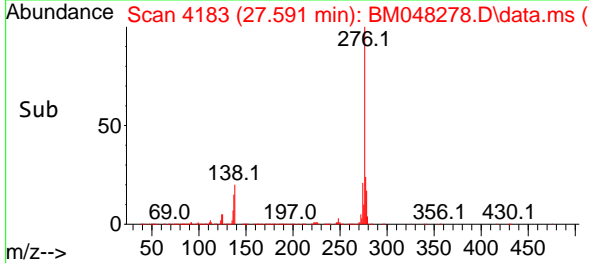
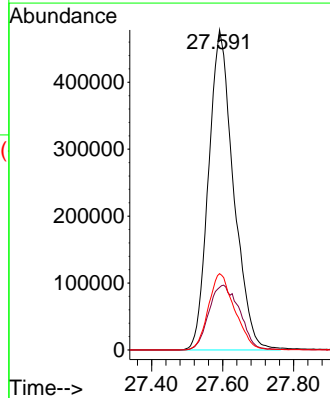
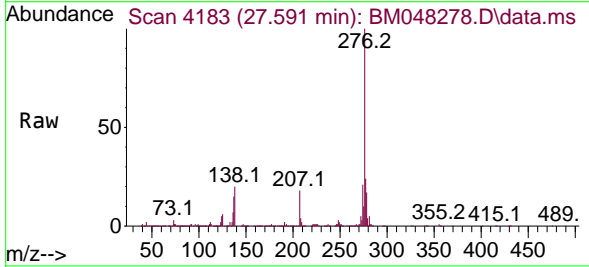
Ion	Ratio	Lower	Upper
252	100		
253	21.9	17.0	25.6
125	11.2	8.5	12.7

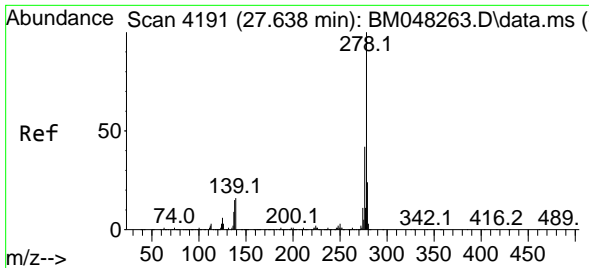


#94
 Indeno(1,2,3-cd)pyrene
 Concen: 32.775 ng/ul
 RT: 27.591 min Scan# 4183
 Delta R.T. -0.017 min
 Lab File: BM048278.D
 Acq: 29 Oct 2024 06:23

Tgt Ion:276 Resp: 2334045

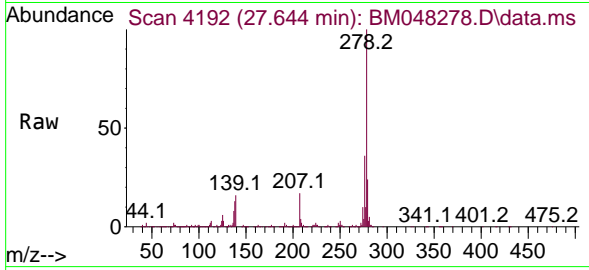
Ion	Ratio	Lower	Upper
276	100		
138	19.5	15.9	23.9
277	23.9	18.8	28.2



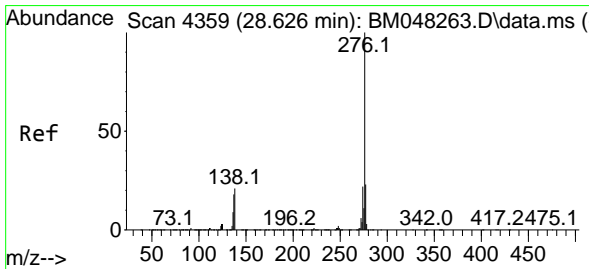
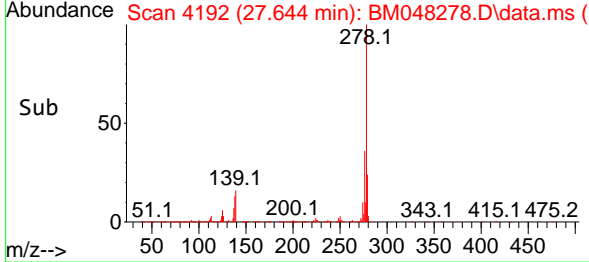
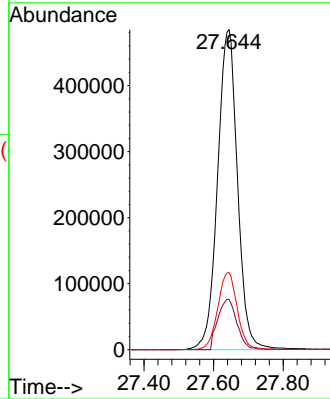


#95
 Dibenzo(a,h)anthracene
 Concen: 33.125 ng/ul
 RT: 27.644 min Scan# 4192
 Delta R.T. -0.012 min
 Lab File: BM048278.D
 Acq: 29 Oct 2024 06:23

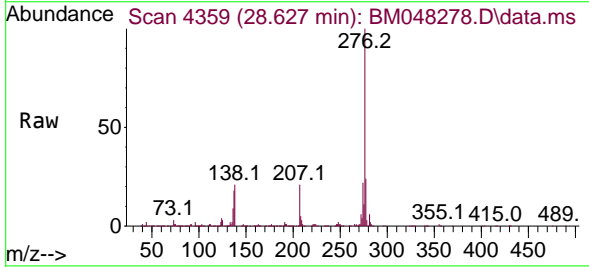
Instrument :
 BNA_M
 ClientSampleId :
 SLCS423



Tgt Ion:278 Resp: 1929278
 Ion Ratio Lower Upper
 278 100
 139 15.7 12.6 18.8
 279 24.1 19.0 28.6



#96
 Benzo(g,h,i)perylene
 Concen: 33.093 ng/ul
 RT: 28.627 min Scan# 4359
 Delta R.T. -0.017 min
 Lab File: BM048278.D
 Acq: 29 Oct 2024 06:23



Tgt Ion:276 Resp: 1808539
 Ion Ratio Lower Upper
 276 100
 138 20.7 16.5 24.7
 277 23.8 18.1 27.1

