

Data Path : Z:\SVOASRV\HPCHEM1\BNA M\DATA\BM102919\  
 Data File : BM023445.D  
 Acq On : 29 Oct 2019 16:32  
 Operator : JU  
 Sample : K5423-12  
 Misc :  
 ALS Vial : 14 Sample Multiplier: 1

Instrument :  
 BNA\_M  
 ClientSampleId :

Quant Time: Oct 29 18:05:16 2019  
 Quant Method : Z:\SVOASRV\HPCHEM1\BNA\_M\METHODS\SOM-EPA-BM102319MA.M  
 Quant Title : SVOA CALIBRATION  
 QLast Update : Fri Oct 25 07:44:12 2019  
 Response via : Initial Calibration

Internal Standards	R.T.	QIon	Response	Conc	Units	Dev(Min)
1) 1,4-Dichlorobenzene-d4	7.62	152	548291	20.00	ng/ul	-0.02
18) Naphthalene-d8	10.40	136	2232389	20.00	ng/ul	-0.02
36) Acenaphthene-d10	14.27	164	1362115	20.00	ng/ul	-0.02
62) Phenanthrene-d10	17.02	188	2772113	20.00	ng/ul	-0.02
78) Chrysene-d12	21.22	240	2788461	20.00	ng/ul	-0.01
86) Perylene-d12	23.41	264	3246308	20.00	ng/ul	-0.02

## System Monitoring Compounds

3) 1,4-Dioxane-d8	3.15	96	58780	5.09	ng/uL	0.00
5) Phenol-d5	6.80	99	316828	6.88	ng/ul	-0.01
7) Bis-(2-Chloroethyl)ether-d	6.96	67	624616	23.14	ng/ul	-0.02
9) 2-Chlorophenol-d4	7.16	132	733879	20.39	ng/ul	-0.02
13) 4-Methylphenol-d8	8.33	113	516928	13.82	ng/ul	-0.02
19) Nitrobenzene-d5	8.77	128	416600	24.79	ng/ul	-0.02
22) 2-Nitrophenol-d4	9.49	143	463243	24.84	ng/ul	-0.02
26) 2,4-Dichlorophenol-d3	10.03	165	803654	21.93	ng/ul	-0.02
29) 4-Chloroaniline-d4	10.54	131	8670	0.21	ng/ul	-0.02
44) Dimethylphthalate-d6	13.69	166	2663726	25.75	ng/ul	-0.02
47) Acenaphthylene-d8	13.96	160	3060138	25.82	ng/ul	-0.02
52) 4-Nitrophenol-d4	14.49	143	105369	5.88	ng/ul	0.00
58) Fluorene-d10	15.27	176	2246007	25.64	ng/ul	-0.02
63) 4,6-Dinitro-2-methylphenol	15.40	200	319757	18.53	ng/ul	-0.01
71) Anthracene-d10	17.12	188	3559891	27.17	ng/ul	-0.02
79) Pyrene-d10	19.42	212	3979760	25.95	ng/ul	-0.01
90) Benzo(a)pyrene-d12	23.27	264	4649735	28.12	ng/ul	-0.01

## Target Compounds

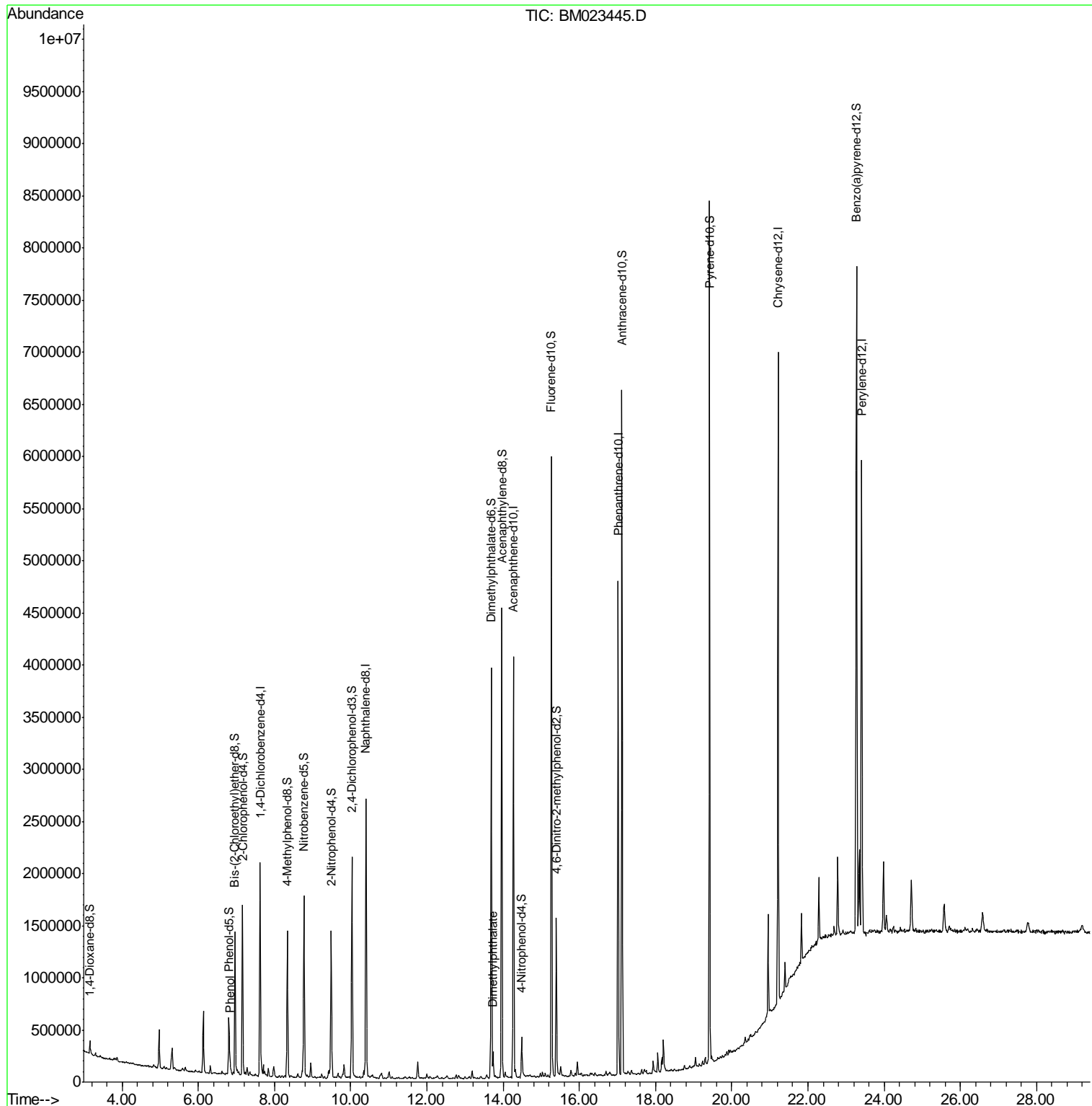
Target Compounds	R.T.	QIon	Response	Conc	Units	Ovalue
6) Phenol	6.83	94	59566	1.256	ng/ul	95
45) Dimethylphthalate	13.73	163	148669	1.431	ng/ul	99

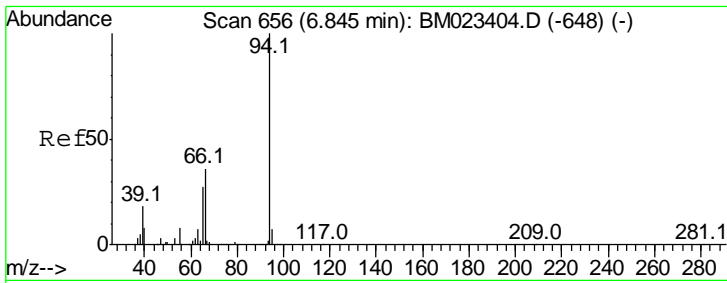
(#) = qualifier out of range (m) = manual integration (+) = signals summed

Data Path : Z:\SVOASRV\HPCHEM1\BNA M\DATA\BM102919\  
 Data File : BM023445.D  
 Acq On : 29 Oct 2019 16:32  
 Operator : JU  
 Sample : K5423-12  
 Misc :  
 ALS Vial : 14 Sample Multiplier: 1

Instrument :  
 BNA\_M  
 ClientSampled :

Quant Time: Oct 29 18:05:16 2019  
 Quant Method : Z:\SVOASRV\HPCHEM1\BNA\_M\METHODS\SOM-EPA-BM102319MA.M  
 Quant Title : SVOA CALIBRATION  
 QLast Update : Fri Oct 25 07:44:12 2019  
 Response via : Initial Calibration

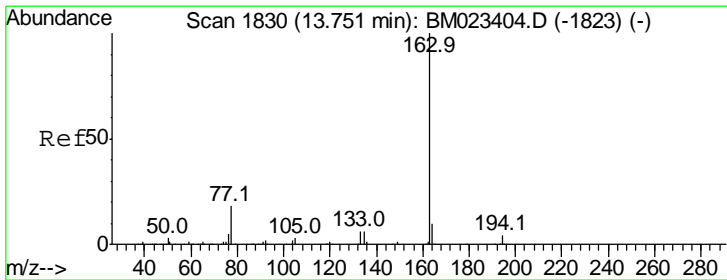
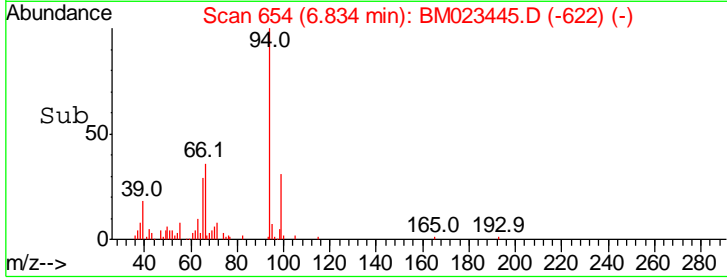
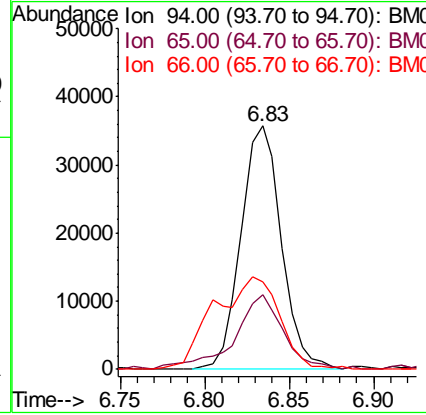
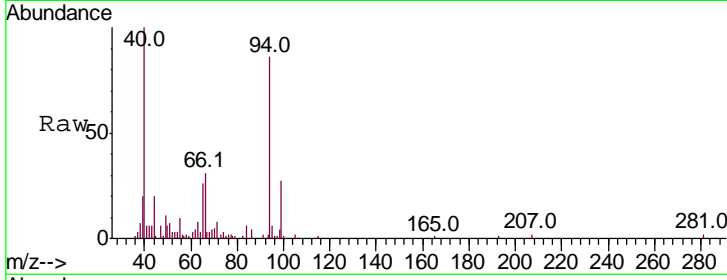




#6  
 Phenol  
 Concen: 1.256 ng/ul  
 RT: 6.83 min Scan# 654  
 Delta R.T. -0.01 min  
 Lab File: BM023445.D  
 Acq: 29 Oct 2019 16:32

Instrument :  
 BNA\_M  
 ClientSampled :

Tgt Ion	Resp	Lower	Upper
94	100		
65	30.5	22.9	34.3
66	36.0	31.4	47.2



#45  
 Dimethylphthalate  
 Concen: 1.431 ng/ul  
 RT: 13.73 min Scan# 1827  
 Delta R.T. -0.02 min  
 Lab File: BM023445.D  
 Acq: 29 Oct 2019 16:32

Tgt Ion	Resp	Lower	Upper
163	100		
194	4.4	3.3	4.9
164	10.1	7.9	11.9

