

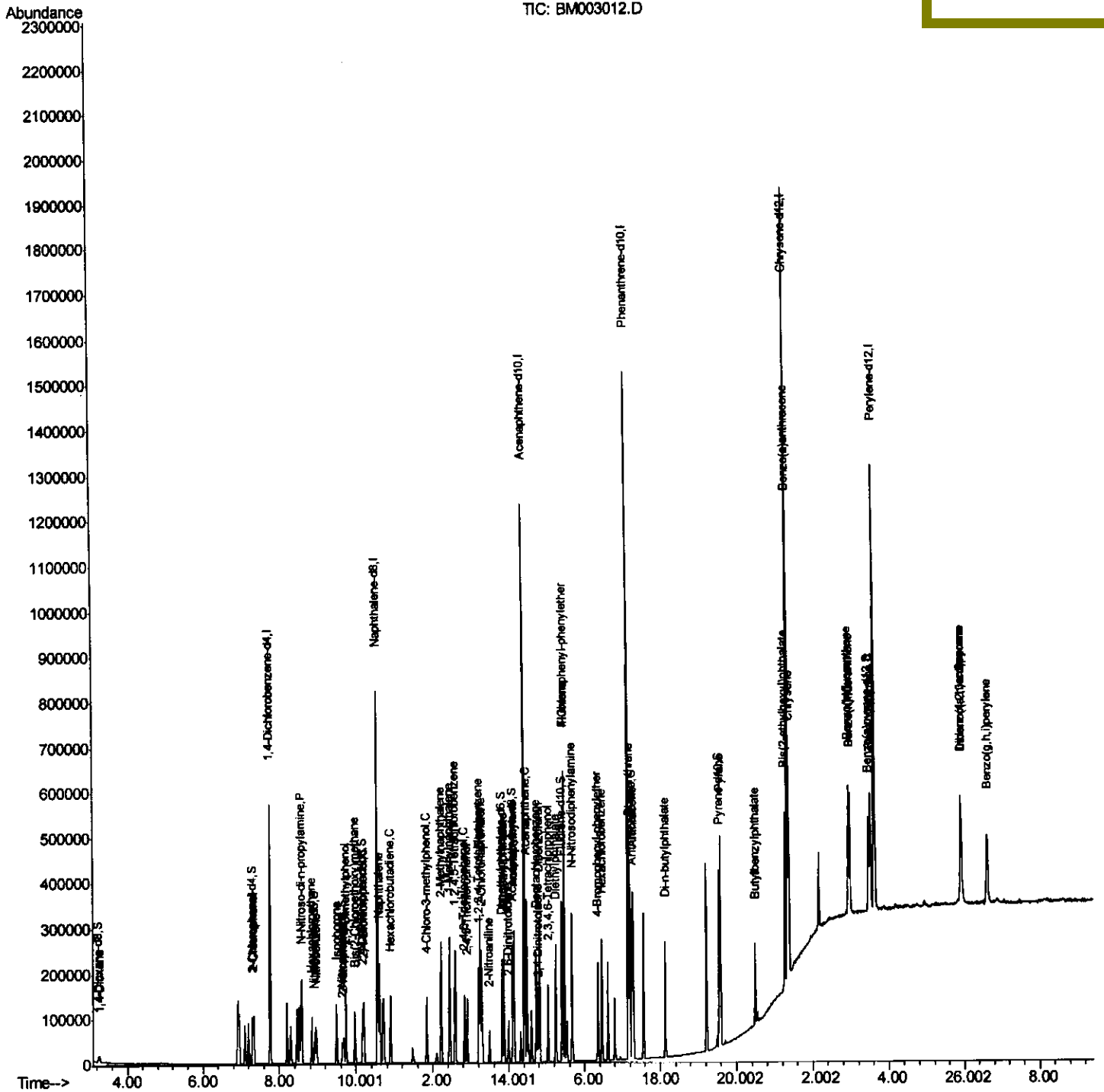
Data Path : Z:\HPCHEM1\BNA_M\Data\BM103015\
Data File : BM003012.D
Acq On : 30 Oct 2015 14:25
Operator : UM/IZ
Sample : SSTD00555
Misc :
ALS Vial : 2 Sample Multiplier: 1

Instrument :
BNA_M
Client Sampled :
SSTD00555

Quant Time: Oct 30 16:28:14 2015
Quant Method : Z:\HPCHEM1\BNA_M\METHODS\SOM02.2-EPA-BM103015.M
Quant Title : SVOA CALIBRATION
QLast Update : Fri Oct 30 16:06:55 2015
Response via : Initial Calibration

Manual Integrations
APPROVED

Mmdadoda
11/2/2015 4:33:47 PM



Data Path : Z:\HPCHEM1\BNA_M\Data\BM103015\
 Data File : BM003012.D
 Acq On : 30 Oct 2015 14:25
 Operator : UM/IZ
 Sample : SSTD00555
 Misc :
 ALS Vial : 2 Sample Multiplier: 1

Instrument :
 BNA_M
 ClientSampleId :
 SSTD00555

Quant Time: Oct 30 16:28:14 2015
 Quant Method : Z:\HPCHEM1\BNA_M\METHODS\SOM02.2-EPA-BM103015.M
 Quant Title : SVOA CALIBRATION
 QLast Update : Fri Oct 30 16:06:55 2015
 Response via : Initial Calibration

Manual Integrations
 APPROVED

Mmdadoda
 11/2/2015 4:33:47 PM

Internal Standards	R.T.	QIon	Response	Conc	Units	Dev(Min)
48) Acenaphthylene	14.13	152	204731	4.82	ng/ul	100
50) Acenaphthene	14.47	153	143831	5.10	ng/ul	99
54) Dibenzofuran	14.81	168	200759	5.27	ng/ul	95
55) 2,4-Dinitrotoluene	14.77	165	25933	2.97	ng/ul#	87
56) 2,3,4,6-Tetrachlorophenol	15.03	232	31650	5.68	ng/ul#	97
57) Diethylphthalate	15.24	149	146213	4.77	ng/ul	98
59) Fluorene	15.46	166	161284	5.16	ng/ul	100
60) 4-Chlorophenyl-phenylether	15.46	204	74495	5.16	ng/ul	95
65) N-Nitrosodiphenylamine	15.67	169	123758	4.34	ng/ul	100
66) 4-Bromophenyl-phenylether	16.35	248	38907	4.39	ng/ul	96
67) Hexachlorobenzene	16.46	284	51414	5.45	ng/ul	96
70) Phenanthrene	17.20	178	251207	5.15	ng/ul	99
72) Anthracene	17.29	178	234433	4.72	ng/ul	99
73) 1,2,3,4-Tetrachlorobenzene	13.20	216	63540	4.83	ng/uL	97
74) Pentachlorobenzene	14.73	250	61758	5.11	ng/uL	99
76) Di-n-butylphthalate	18.13	149	190295	3.52	ng/ul#	98
80) Pyrene	19.58	202	271834	5.02	ng/ul	97
81) Butylbenzylphthalate	20.49	149	51670	2.22	ng/ul	92
83) Benzo(a)anthracene	21.33	228	199852	4.35	ng/ul	99
84) Bis(2-ethylhexyl)phthalate	21.27	149	83685	2.44	ng/ul	98
85) Chrysene	21.39	228	215147	4.95	ng/ul	99
88) Benzo(b)fluoranthene	22.94	252	195620	4.57	ng/ul	97
89) Benzo(k)fluoranthene	22.98	252	174735	4.23	ng/ul	98
91) Benzo(a)pyrene	23.52	252	183564	4.51	ng/ul	97
92) Indeno(1,2,3-cd)pyrene	25.92	276	188408	4.23	ng/ul	95
93) Dibenzo(a,h)anthracene	25.93	278	138613	3.70	ng/ul	95
94) Benzo(g,h,i)perylene	26.62	276	180167	4.84	ng/ul	95

(#) = qualifier out of range (m) = manual integration (+) = signals summed

Data Path : Z:\HPCHEM1\BNA_M\Data\BM103015\
 Data File : BM003012.D
 Acq On : 30 Oct 2015 14:25
 Operator : UM/IZ
 Sample : SSTD00555
 Misc :
 ALS Vial : 2 Sample Multiplier: 1

Instrument :
 BNA_M
 ClientSampleId :
 SSTD00555

Quant Time: Oct 30 16:28:14 2015
 Quant Method : Z:\HPCHEM1\BNA_M\METHODS\SOM02.2-EPA-BM103015.M
 Quant Title : SVOA CALIBRATION
 QLast Update : Fri Oct 30 16:06:55 2015
 Response via : Initial Calibration

Manual Integrations
 APPROVED
 Mmdadoda
 11/2/2015 4:33:47 PM

Internal Standards	R.T.	QIon	Response	Conc	Units	Dev(Min)
1) 1,4-Dichlorobenzene-d4	7.77	152	154784	20.00	ng/ul	0.00
18) Naphthalene-d8	10.56	136	711461	20.00	ng/ul	0.00
36) Acenaphthene-d10	14.42	164	403876	20.00	ng/ul	0.00
62) Phenanthrene-d10	17.16	188	844238	20.00	ng/ul	0.00
78) Chrysene-d12	21.35	240	775284	20.00	ng/ul	0.00
86) Perylene-d12	23.62	264	709268	20.00	ng/ul	0.00

System Monitoring Compounds	R.T.	QIon	Response	Conc	Units	Dev(Min)
3) 1,4-Dioxane-d8	3.23	96	6652	2.28	ng/uL	0.00
5) Phenol-d5	0.00	99	0d	0.00	ng/ul	
7) Bis-(2-Chloroethyl)ether-d	0.00	67	0d	0.00	ng/ul	
9) 2-Chlorophenol-d4	7.30	132	48615	4.38	ng/ul	0.00
13) 4-Methylphenol-d8	0.00	113	0d	0.00	ng/ul	
19) Nitrobenzene-d5	8.92	128	16917	3.24	ng/ul	0.00
22) 2-Nitrophenol-d4	9.65	143	17032	3.07	ng/ul	0.00
26) 2,4-Dichlorophenol-d3	10.18	165	45070	4.72	ng/ul	0.00
29) 4-Chloroaniline-d4	0.00	131	0d	0.00	ng/ul	
44) Dimethylphthalate-d6	13.82	166	147051	4.87	ng/ul	0.00
47) Acenaphthylene-d8	14.10	160	184168	4.61	ng/ul	0.00
52) 4-Nitrophenol-d4	0.00	143	0d	0.00	ng/ul	
58) Fluorene-d10	15.40	176	134582	4.99	ng/ul	0.00
63) 4,6-Dinitro-2-methylphenol	0.00	200	0d	0.00	ng/ul	
71) Anthracene-d10	17.26	188	182452	4.58	ng/ul	0.00
79) Pyrene-d10	19.55	212	197498	4.93	ng/ul	0.00
90) Benzo(a)pyrene-d12	23.48	264	151291	4.21	ng/ul	0.00

Target Compounds	R.T.	QIon	Response	Conc	Units	Qvalue
2) 1,4-Dioxane	3.26	88	7409	2.34	ng/uL	96
10) 2-Chlorophenol	7.33	128	50831	4.52	ng/ul	98
15) N-Nitroso-di-n-propylamine	8.57	70	35052	4.71	ng/ul#	92
17) Hexachloroethane	8.85	117	19846	4.82	ng/ul	95
20) Nitrobenzene	8.96	77	44455	4.34	ng/ul#	87
21) Isophorone	9.49	82	96496	4.78	ng/ul	94
23) 2-Nitrophenol	9.68	139	20035	3.18	ng/ul#	87
24) 2,4-Dimethylphenol	9.73	107	56716	4.98	ng/ul	93
25) Bis(2-Chloroethoxy)methane	9.98	93	66030	4.88	ng/ul	98
27) 2,4-Dichlorophenol	10.20	162	47361	4.76	ng/ul	99
28) Naphthalene	10.61	128	182237	5.06	ng/ul	99
31) Hexachlorobutadiene	10.90	225	31385	5.55	ng/ul	98
33) 4-Chloro-3-methylphenol	11.84	107	50147	4.94	ng/ul	96
34) 2-Methylnaphthalene	12.23	142	131095	5.09	ng/ul	100
35) 1-Methylnaphthalene	12.45	142	130514m	5.17	ng/ul	
37) 1,2,4,5-Tetrachlorobenzene	12.60	216	64529	5.18	ng/ul	98
39) 2,4,6-Trichlorophenol	12.84	196	35998	4.87	ng/ul	98
40) 2,4,5-Trichlorophenol	12.90	196	38789	5.09	ng/ul	98
41) 1,1'-Biphenyl	13.25	154	170834	4.94	ng/ul	99
42) 2-Chloronaphthalene	13.29	162	125189	4.78	ng/ul	99
43) 2-Nitroaniline	13.49	65	17787	3.01	ng/ul	89
45) Dimethylphthalate	13.87	163	154314	5.04	ng/ul	100
46) 2,6-Dinitrotoluene	13.99	165	18274	2.91	ng/ul#	75

UM
 10/31/15

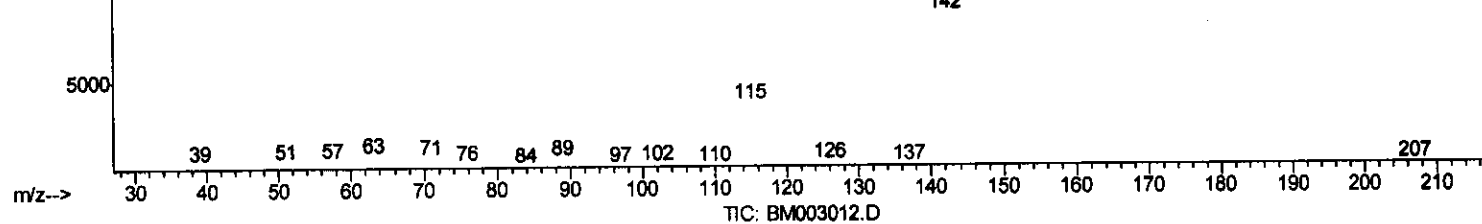
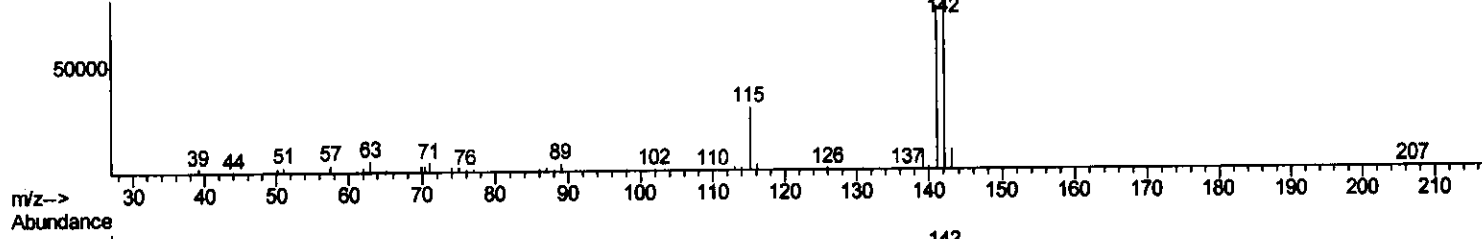
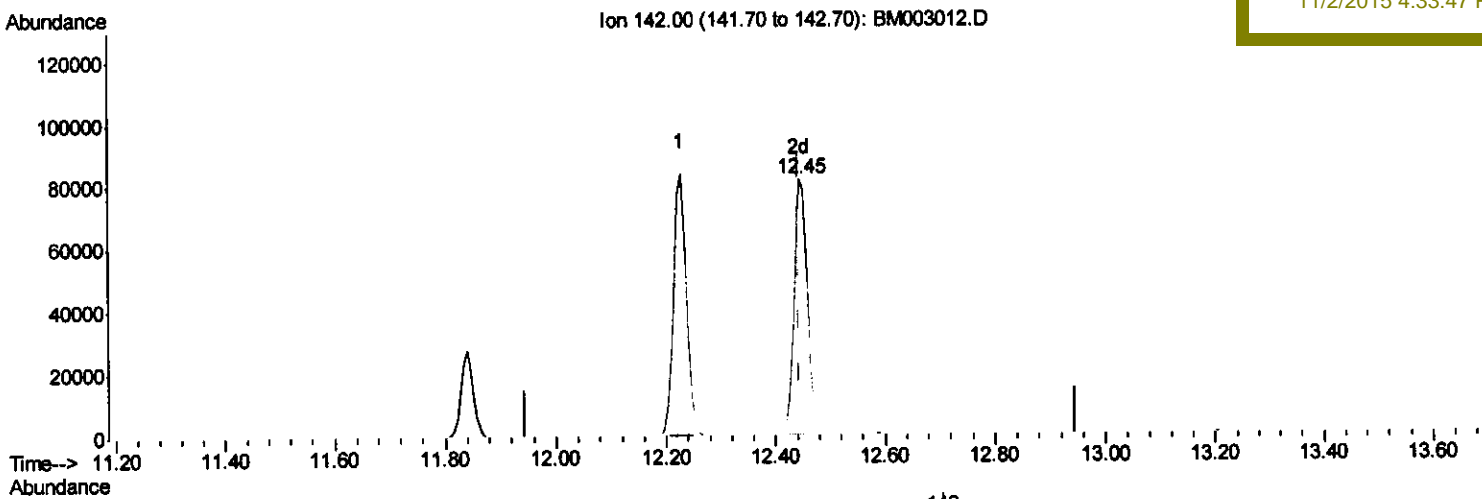
Quantitation Report (Qedit)

Data Path : Z:\HPCHEM1\BNA_M\Data\BM103015\
 Data File : BM003012.D
 Acq On : 30 Oct 2015 14:25
 Operator : UM/IZ
 Sample : SSTD00555
 Misc :
 ALS Vial : 2 Sample Multiplier: 1

Instrument :
 BNA_M
 ClientSampleId :
 SSTD00555

Quant Time: Oct 30 16:23:39 2015
 Quant Method : Z:\HPCHEM1\BNA_M\METHODS\SOM02.2-EPA-BM103015.M
 Quant Title : SVOA CALIBRATION
 QLast Update : Fri Oct 30 16:06:55 2015
 Response via : Initial Calibration

Manual Integrations
 APPROVED
 Mmdadoda
 11/2/2015 4:33:47 PM



(35) 1-Methylnaphthalene

12.445min (+0.000) 5.17ng/ul m

response 130514

Ion	Exp%	Act%
142.00	100	100
141.00	93.30	93.73
116.00	3.20	3.96#
0.00	0.00	0.00

U.M.
10/31/15

Quantitation Report (Qedit)

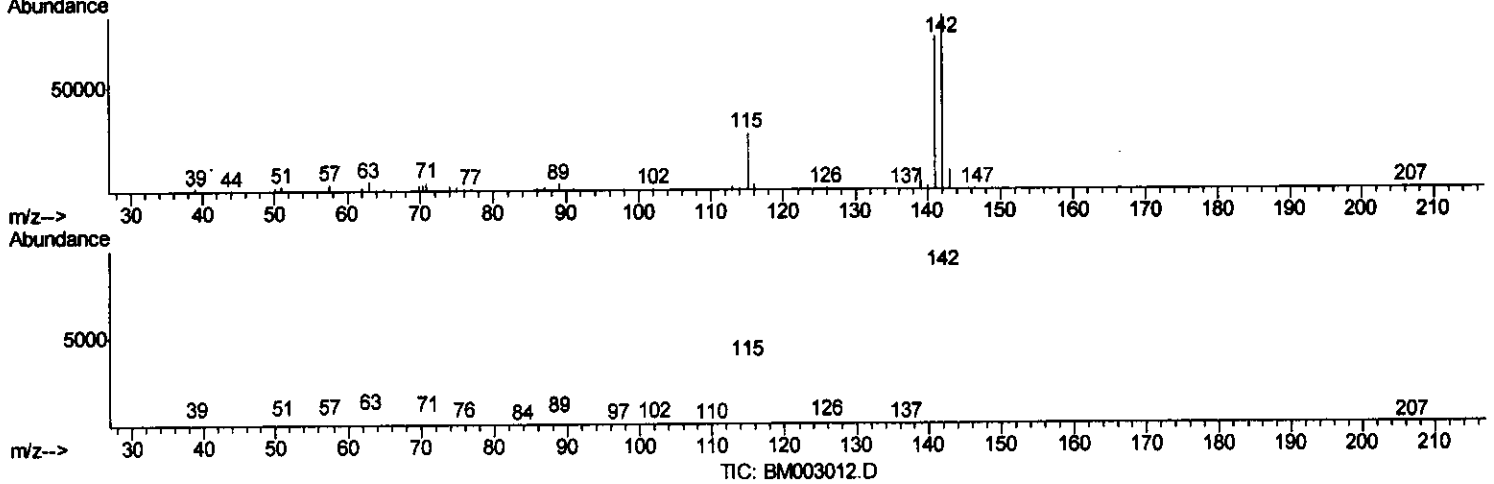
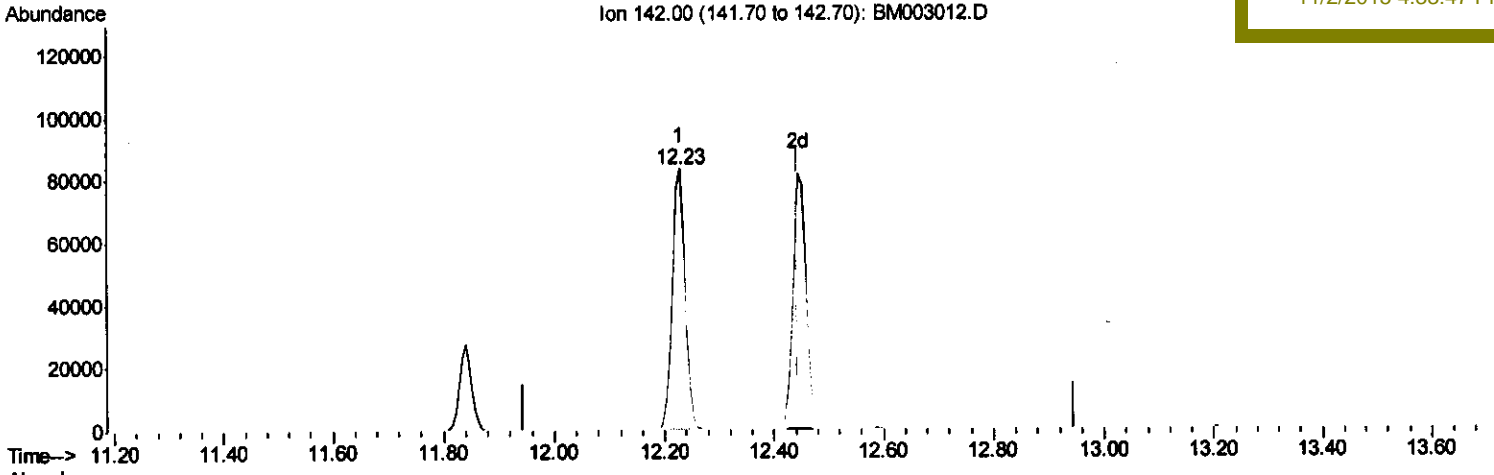
Data Path : Z:\HPCHEM1\BNA_M\Data\BM103015\
Data File : BM003012.D
Acq On : 30 Oct 2015 14:25
Operator : UM/IZ
Sample : SSTD00555
Misc :
ALS Vial : 2 Sample Multiplier: 1

Instrument :
BNA_M
ClientSampleID :
SSTD00555

Quant Time: Oct 30 16:23:39 2015
Quant Method : Z:\HPCHEM1\BNA_M\METHODS\SOM02.2-EPA-BM103015.M
Quant Title : SVOA CALIBRATION
QLast Update : Fri Oct 30 16:06:55 2015
Response via : Initial Calibration

Manual Integrations
APPROVED

Mmdadoda
11/2/2015 4:33:47 PM



(35) 1-Methylnaphthalene
12.228min (-0.217) 5.19ng/ul
response 131095

Ion	Exp%	Act%
142.00	100	100
141.00	93.30	87.99
116.00	3.20	3.60
0.00	0.00	0.00