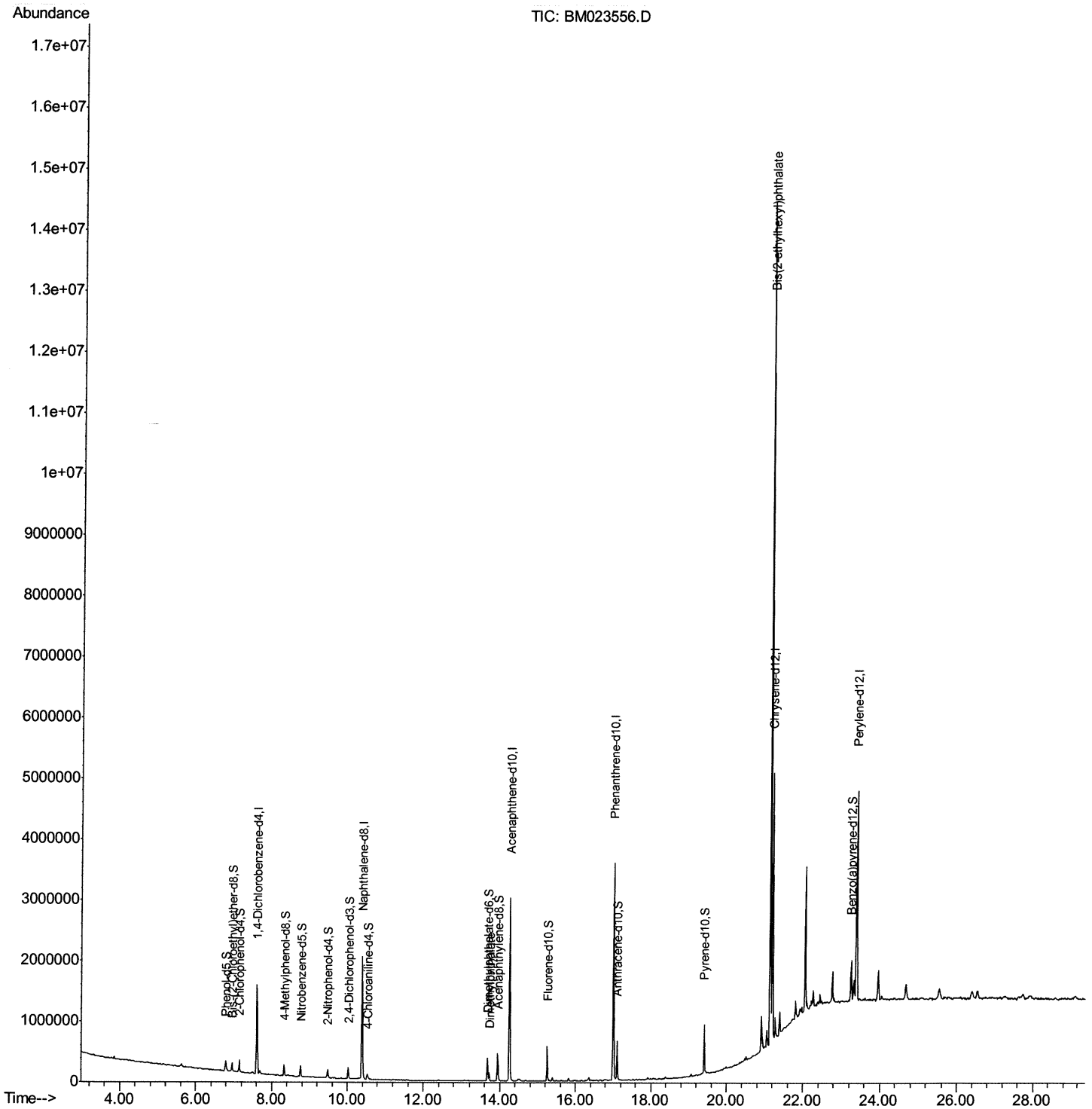


Data Path : Z:\SVOASRV\HPCHEM1\BNA M\DATA\BM103119\
 Data File : BM023556.D
 Acq On : 01 Nov 2019 13:10
 Operator : JU
 Sample : K5433-09DL 5X
 Misc :
 ALS Vial : 34 Sample Multiplier: 1

Instrument :
 BNA_M
 Client Sampled :
 JLN6DL

Manual Integrations
 APPROVED
 mohammad
 11/1/2019 4:15:40 PM

Quant Time: Nov 01 13:15:14 2019
 Quant Method : Z:\SVOASRV\HPCHEM1\BNA_M\METHODS\SOM-EPA-BM102319MA.M
 Quant Title : SVOA CALIBRATION
 QLast Update : Fri Nov 01 08:19:37 2019
 Response via : Initial Calibration



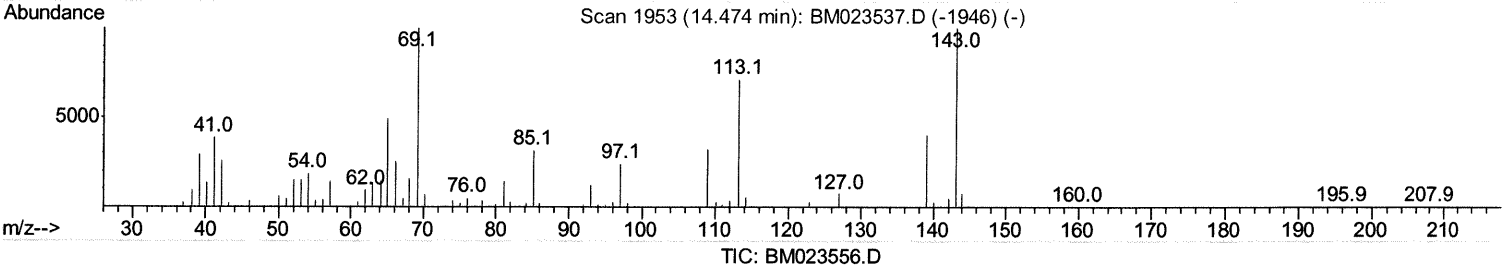
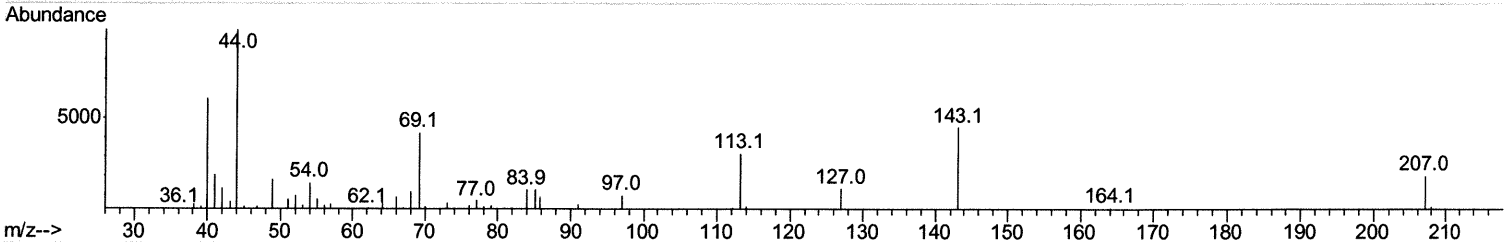
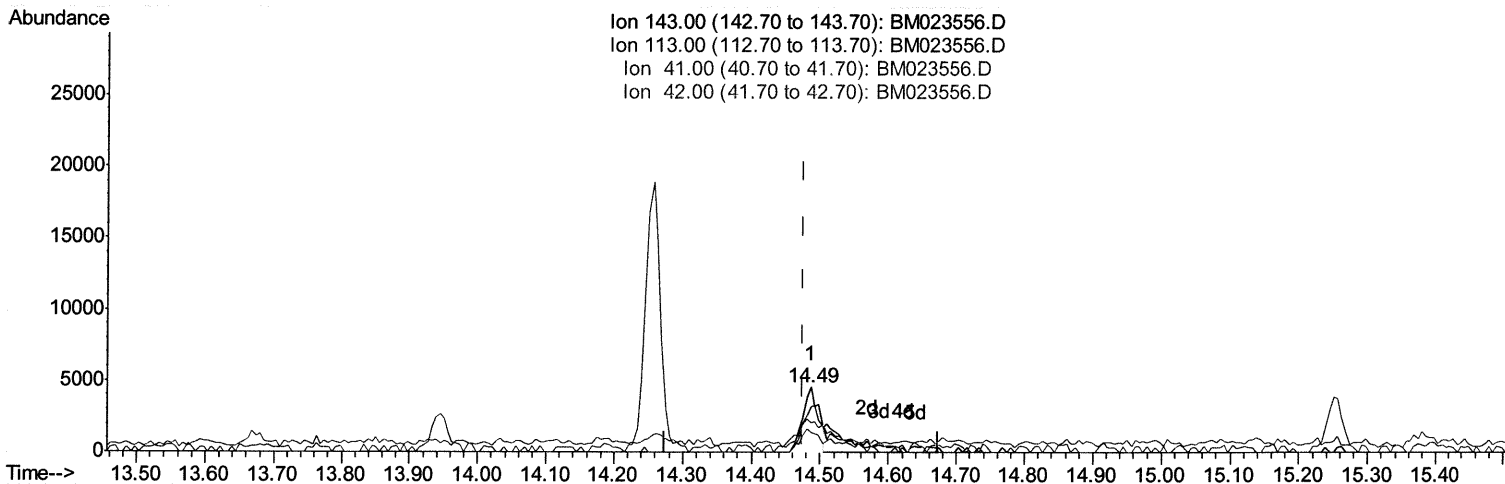
Quantitation Report (Qedit)

Data Path : Z:\SVOASRV\HPCHEM1\BNA M\DATA\BM103119\
 Data File : BM023556.D
 Acq On : 01 Nov 2019 13:10
 Operator : JU
 Sample : K5433-09DL 5X
 Misc :
 ALS Vial : 34 Sample Multiplier: 1

Instrument :
 BNA_M
 ClientSampleId :
 JLNF6DL

Manual Integrations
APPROVED
 mohammad
 11/1/2019 4:15:40 PM

Quant Time: Nov 01 14:07:01 2019
 Quant Method : Z:\SVOASRV\HPCHEM1\BNA_M\METHODS\SOM-EPA-BM102319MA.M
 Quant Title : SVOA CALIBRATION
 QLast Update : Fri Nov 01 08:19:37 2019
 Response via : Initial Calibration



(52) 4-Nitrophenol-d4 (S)
 14.486min (+0.012) 0.58ng/ul
 response 7411

Ion	Exp%	Act%
143.00	100	100
113.00	74.40	69.72
41.00	37.50	46.18#
42.00	25.50	30.39

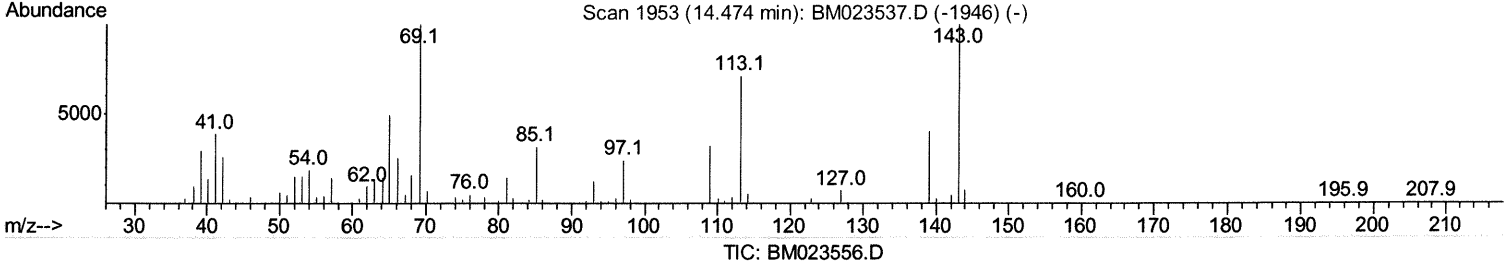
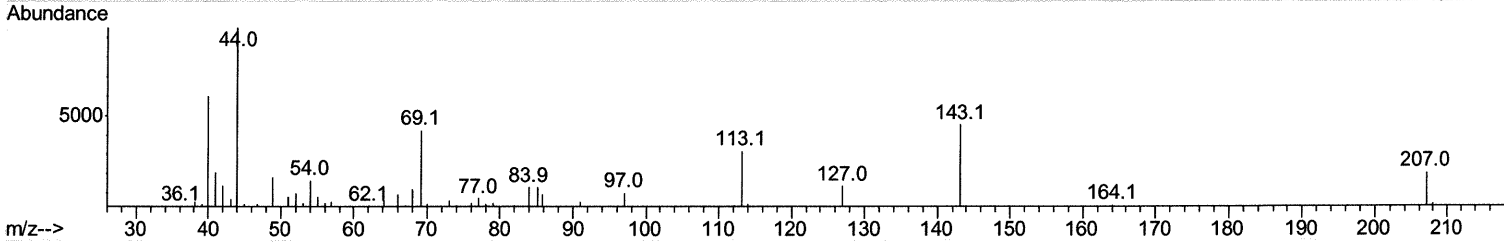
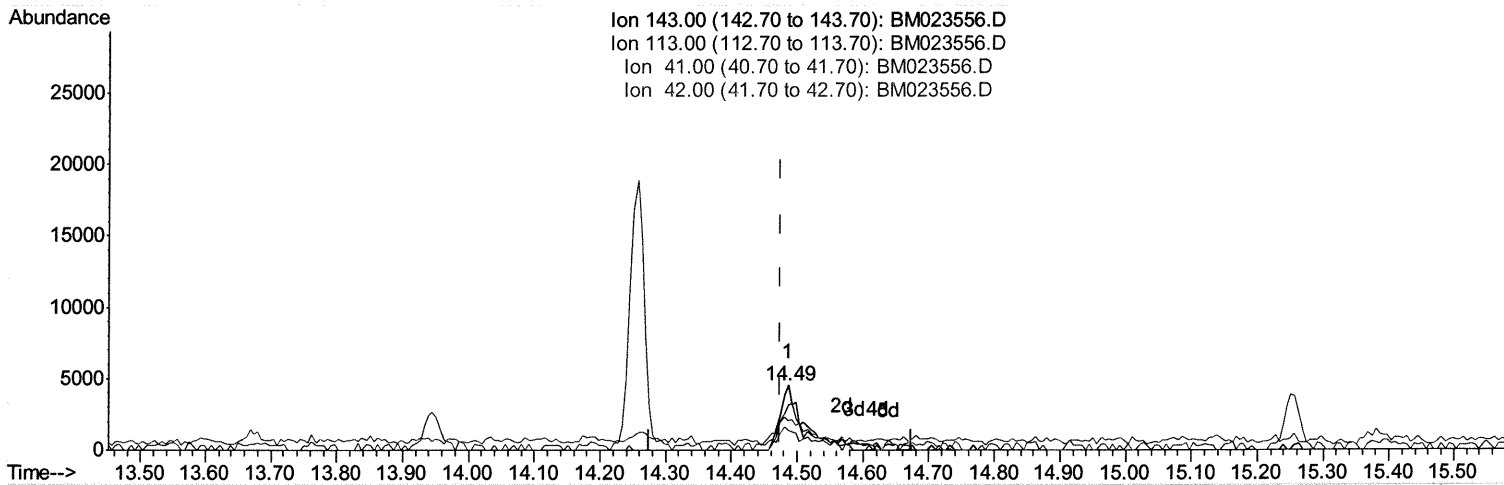
Quantitation Report (Qedit)

Data Path : Z:\SVOASRV\HPCHEM1\BNA M\DATA\BM103119\
 Data File : BM023556.D
 Acq On : 01 Nov 2019 13:10
 Operator : JU
 Sample : K5433-09DL 5X
 Misc :
 ALS Vial : 34 Sample Multiplier: 1

Instrument :
 BNA_M
 ClientSampled :
 JLNF6DL

Manual Integrations
 APPROVED
 mohammad
 11/1/2019 4:15:40 PM

Quant Time: Nov 01 14:07:01 2019
 Quant Method : Z:\SVOASRV\HPCHEM1\BNA_M\METHODS\SOM-EPA-BM102319MA.M
 Quant Title : SVOA CALIBRATION
 QLast Update : Fri Nov 01 08:19:37 2019
 Response via : Initial Calibration



(52) 4-Nitrophenol-d4 (S)

14.486min (+0.012) 0.90ng/ul m

JU 11/01/19

response 11630

Ion	Exp%	Act%
143.00	100	100
113.00	74.40	69.72
41.00	37.50	46.18#
42.00	25.50	30.39

Quantitation Report (QT/LSC Reviewed)

Data Path : Z:\SVOASRV\HPCHEM1\BNA M\DATA\BM103119\
 Data File : BM023556.D
 Acq On : 01 Nov 2019 13:10
 Operator : JU
 Sample : K5433-09DL 5X
 Misc :
 ALS Vial : 34 Sample Multiplier: 1

Instrument :
 BNA_M
 ClientSampled :
 JLN6DL

Manual Integrations
 APPROVED
 mohammad
 11/1/2019 4:15:40 PM

Quant Time: Nov 01 13:15:14 2019
 Quant Method : Z:\SVOASRV\HPCHEM1\BNA_M\METHODS\SOM-EPA-BM102319MA.M
 Quant Title : SVOA CALIBRATION
 QLast Update : Fri Nov 01 08:19:37 2019
 Response via : Initial Calibration

Internal Standards	R.T.	QIon	Response	Conc	Units	Dev(Min)
1) 1,4-Dichlorobenzene-d4	7.61	152	406623	20.00	ng/ul	0.00
18) Naphthalene-d8	10.39	136	1656799	20.00	ng/ul	0.00
36) Acenaphthene-d10	14.26	164	977162	20.00	ng/ul	0.00
62) Phenanthrene-d10	17.00	188	2045233	20.00	ng/ul	0.00
78) Chrysene-d12	21.20	240	2000320	20.00	ng/ul	0.00
86) Perylene-d12	23.39	264	2435840	20.00	ng/ul	0.00

System Monitoring Compounds	R.T.	QIon	Response	Conc	Units	Dev(Min)
3) 1,4-Dioxane-d8	3.15	96	5309	0.62	ng/uL	0.01
5) Phenol-d5	6.79	99	98959	2.90	ng/ul	0.00
7) Bis-(2-Chloroethyl)ether-d	6.95	67	70049	3.50	ng/ul	0.00
9) 2-Chlorophenol-d4	7.15	132	85578	3.21	ng/ul	0.00
13) 4-Methylphenol-d8	8.32	113	67678	2.44	ng/ul	0.00
19) Nitrobenzene-d5	8.76	128	44244	3.55	ng/ul	0.00
22) 2-Nitrophenol-d4	9.47	143	42497	3.07	ng/ul	0.00
26) 2,4-Dichlorophenol-d3	10.02	165	73491	2.70	ng/ul	0.00
29) 4-Chloroaniline-d4	10.53	131	54140	1.73	ng/ul	0.00
44) Dimethylphthalate-d6	13.67	166	263185	3.55	ng/ul	0.00
47) Acenaphthylene-d8	13.95	160	304523	3.58	ng/ul	0.00
52) 4-Nitrophenol-d4	14.49	143	11630m>	0.90	ng/ul>	0.00
58) Fluorene-d10	15.26	176	233790	3.72	ng/ul	0.00
63) 4,6-Dinitro-2-methylphenol	15.39	200	12319	0.97	ng/ul	0.00
71) Anthracene-d10	17.10	188	350708	3.63	ng/ul	0.00
79) Pyrene-d10	19.40	212	398728	3.62	ng/ul	0.00
90) Benzo(a)pyrene-d12	23.25	264	469609	3.78	ng/ul	-0.01

2011/04/19

Target Compounds	R.T.	QIon	Response	Conc	Units	Ovalue
45) Dimethylphthalate	13.72	163	88221	1.184	ng/ul	99
84) Bis(2-ethylhexyl)phthalate	21.14	149	4908459	60.542	ng/ul	98

(#) = qualifier out of range (m) = manual integration (+) = signals summed