

Data Path : Z:\HPCHEM1\BNA_M\DATA\BM110517\
 Data File : BM012749.D
 Acq On : 05 Nov 2017 21:05
 Operator : SJ/JU
 Sample : I6154-12
 Misc :
 ALS Vial : 9 Sample Multiplier: 1

Instrument :
 BNA_M
 ClientSampleId :
 BDEB3

Integration Parameters: LSCINT.P
 Integrator: RTE
 Smoothing : OFF Filtering: 5
 Sampling : 1 Min Area: 1 % of largest Peak
 Start Thrs: 0.2 Max Peaks: 100
 Stop Thrs : 0 Peak Location: TOP

If leading or trailing edge < 100 prefer < Baseline drop else tangent >
 Peak separation: 5

Method : Z:\HPCHEM1\BNA_M\METHODS\SOM-EPA-BM110417MA.M
 Title : SVOA CALIBRATION

Signal : TIC

peak #	R.T. min	first scan	max scan	last scan	PK TY	peak height	corr. area	corr. % max.	% of total
1	6.987	658	663	670	rBV	78062	124390	3.55%	0.404%
2	7.145	683	690	699	rBV	284215	437264	12.48%	1.421%
3	7.345	718	724	735	rBB	315458	499707	14.26%	1.623%
4	7.810	797	803	812	rBB	409877	642327	18.33%	2.087%
5	8.522	917	924	935	rBB	262910	422989	12.07%	1.374%
6	8.969	991	1000	1010	rBB	385591	619370	17.67%	2.012%
7	9.686	1115	1122	1132	rBB	339975	550495	15.71%	1.788%
8	10.228	1207	1214	1227	rBV	487391	819982	23.40%	2.664%
9	10.598	1270	1277	1285	rBV	568642	970112	27.68%	3.152%
10	13.857	1825	1831	1840	rBV	1162509	1553579	44.33%	5.047%
11	14.139	1871	1879	1890	rBV	1259340	1819258	51.91%	5.910%
12	14.451	1925	1932	1939	rBV2	1007454	1524843	43.51%	4.954%
13	14.669	1963	1969	1981	rBV	77598	135149	3.86%	0.439%
14	15.445	2094	2101	2107	rBV	1612304	2363900	67.45%	7.680%
15	15.568	2117	2122	2132	rBV	386977	552793	15.77%	1.796%
16	17.192	2392	2398	2408	rBV2	1482951	2091168	59.66%	6.794%
17	17.292	2408	2415	2426	rBV2	1969786	2768446	78.99%	8.994%
18	19.221	2739	2743	2747	rBV	24982	35603	1.02%	0.116%
19	19.586	2799	2805	2811	rBV	2647543	3504873	100.00%	11.387%
20	21.280	3089	3093	3099	rBV	629742	714196	20.38%	2.320%
21	21.374	3103	3109	3114	rVV	2153325	2795507	79.76%	9.082%
22	23.515	3466	3473	3483	rVB2	1778578	3409688	97.28%	11.077%
23	23.656	3490	3497	3505	rVB2	1291744	2424923	69.19%	7.878%

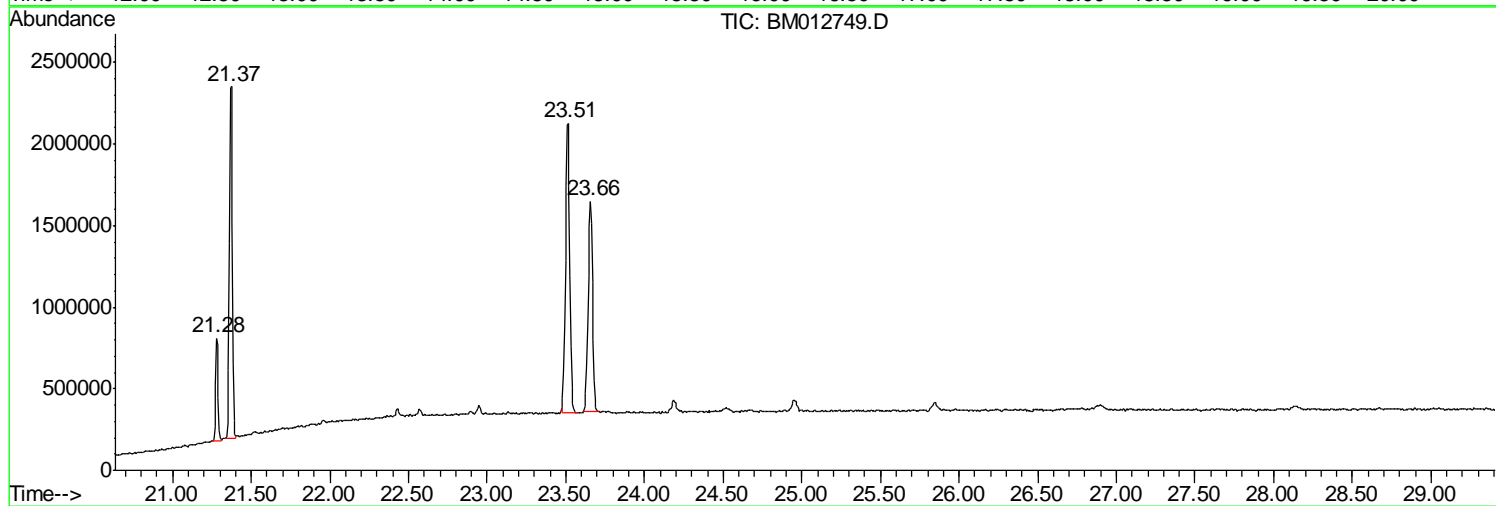
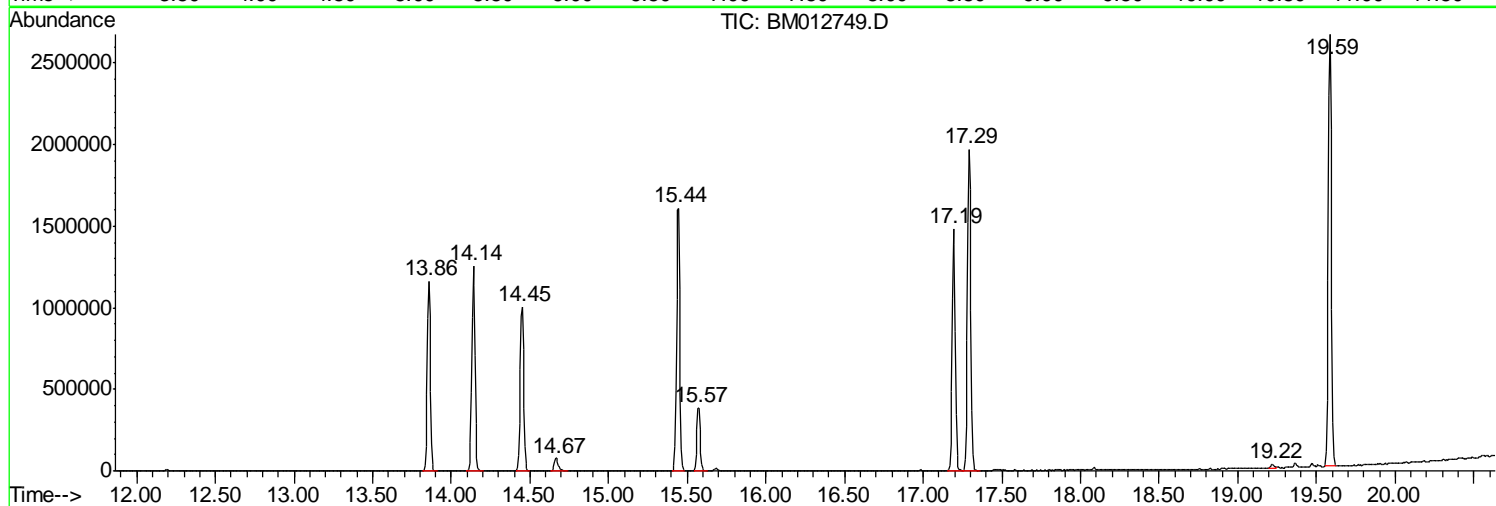
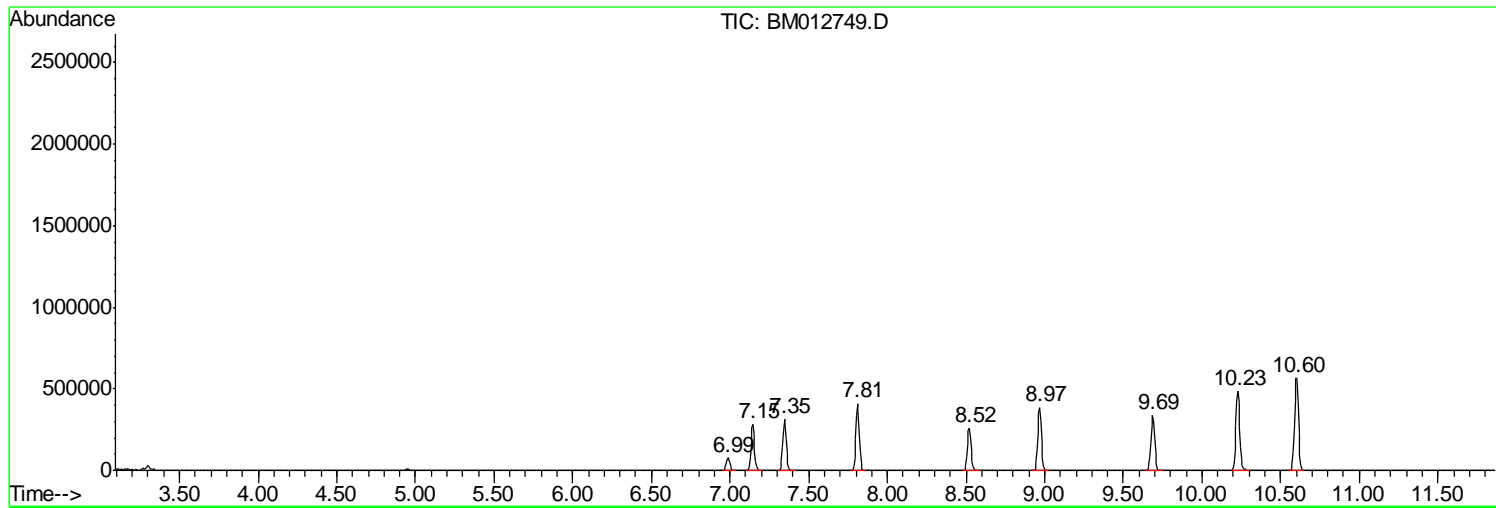
Sum of corrected areas: 30780562

Data Path : Z:\HPCHEM1\BNA_M\DATA\BM110517\
Data File : BM012749.D
Acq On : 05 Nov 2017 21:05
Operator : SJ/JU
Sample : I6154-12
Misc :
ALS Vial : 9 Sample Multiplier: 1

Instrument :
BNA_M
ClientSampleId :
BDEB3

Quant Method : Z:\HPCHEM1\BNA_M\METHODS\SOM-EPA-BM110417MA.M
Quant Title : SVOA CALIBRATION

TIC Library : C:\DATABASE\NIST02.L
TIC Integration Parameters: LSCINT.P



Data Path : Z:\HPCHEM1\BNA_M\DATA\BM110517\
Data File : BM012749.D
Acq On : 05 Nov 2017 21:05
Operator : SJ/JU
Sample : I6154-12
Misc :
ALS Vial : 9 Sample Multiplier: 1

Instrument :
BNA_M
ClientSampleId :
BDEB3

Quant Method : Z:\HPCHEM1\BNA_M\METHODS\SOM-EPA-BM110417MA.M
Quant Title : SVOA CALIBRATION

TIC Library : C:\DATABASE\NIST02.L
TIC Integration Parameters: LSCINT.P

No Library Search Compounds Detected

Data Path : Z:\HPCHEM1\BNA_M\DATA\BM110517\
Data File : BM012749.D
Acq On : 05 Nov 2017 21:05
Operator : SJ/JU
Sample : I6154-12
Misc :
ALS Vial : 9 Sample Multiplier: 1

Instrument :
BNA_M
ClientSampleId :
BDEB3

Quant Method : Z:\HPCHEM1\BNA_M\METHODS\SOM-EPA-BM110417MA.M
Quant Title : SVOA CALIBRATION

TIC Library : C:\DATABASE\NIST02.L
TIC Integration Parameters: LSCINT.P

TIC Top Hit name	RT	EstConc	Units	Response	--Internal Standard--			
					#	RT	Resp	Conc
