

Data Path : Z:\svoasrv\HPCHEM1\BNA\_M\Data\BM110624\  
 Data File : BM048479.D  
 Acq On : 06 Nov 2024 16:13  
 Operator : RC/JU  
 Sample : PB164673BS  
 Misc :  
 ALS Vial : 11 Sample Multiplier: 1

Instrument :  
 BNA\_M  
 ClientSampleId :  
 SLCS673

Quant Time: Nov 06 16:49:55 2024  
 Quant Method : Z:\svoasrv\HPCHEM1\BNA\_M\Methods\SFAM-EPA-SIM-BM110624.M  
 Quant Title : ASP BNA STANDARDS FOR 5 POINT CALIBRATION  
 QLast Update : Wed Nov 06 14:39:10 2024  
 Response via : Initial Calibration

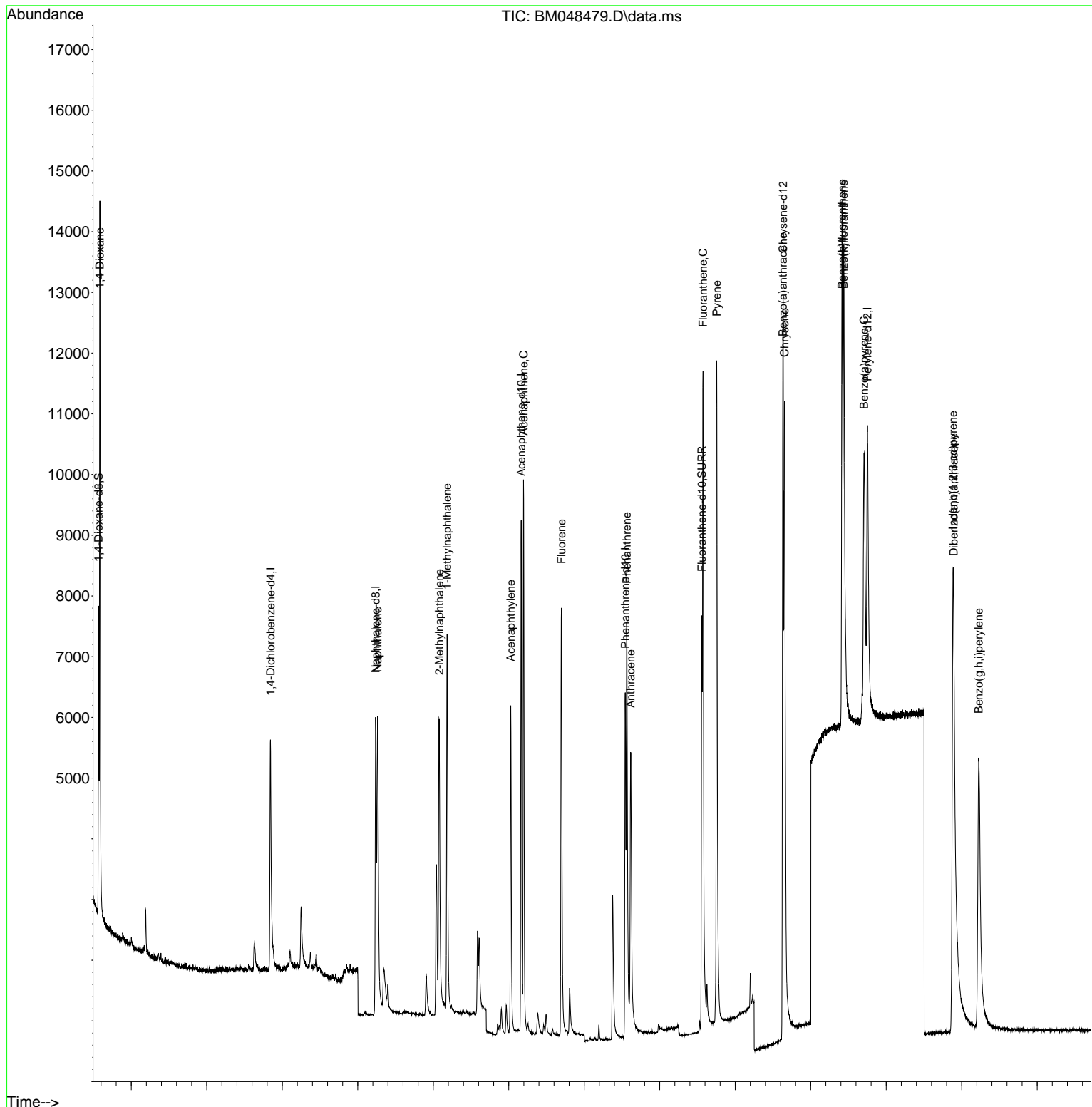
Compound	R.T.	QIon	Response	Conc Units	Dev(Min)
-----					
Internal Standards					
1) 1,4-Dichlorobenzene-d4	7.687	152	3191	0.400 ng/ul	0.00
4) Naphthalene-d8	10.475	136	9955	0.400 ng/ul	0.00
9) Acenaphthene-d10	14.331	164	5397	0.400 ng/ul	0.00
13) Phenanthrene-d10	17.086	188	9898	0.400 ng/ul	0.00
17) Chrysene-d12	21.269	240	8713	0.400 ng/ul	0.00
23) Perylene-d12	23.501	264	9585	0.400 ng/ul	0.00
System Monitoring Compounds					
3) 1,4-Dioxane-d8	3.134	96	3107	0.807 ng/ul	0.00
6) 2-Methylnaphthalene-d10	12.080	152	5378	0.418 ng/ul	0.00
18) Fluoranthene-d10	19.114	212	10796	0.441 ng/ul	0.00
Target Compounds					
					Qvalue
2) 1,4-Dioxane	3.168	88	8077	1.825 ng/ul#	67
5) Naphthalene	10.524	128	9335	0.374 ng/ul	98
7) 2-Methylnaphthalene	12.157	142	5731	0.365 ng/ul	96
8) 1-Methylnaphthalene	12.366	142	5825	0.362 ng/ul	100
10) Acenaphthylene	14.053	152	7743	0.378 ng/ul	100
11) Acenaphthene	14.391	153	6209	0.379 ng/ul	99
12) Fluorene	15.395	166	6704	0.376 ng/ul	98
14) Pentachlorophenol	16.753	266	2798	0.770 ng/ul	99
15) Phenanthrene	17.129	178	10034	0.386 ng/ul	99
16) Anthracene	17.230	178	9047	0.374 ng/ul	99
19) Fluoranthene	19.146	202	12744	0.395 ng/ul	98
20) Pyrene	19.509	202	13878	0.396 ng/ul	98
21) Benzo(a)anthracene	21.260	228	10504	0.368 ng/ul	99
22) Chrysene	21.306	228	15482	0.452 ng/ul	100
24) Benzo(b)fluoranthene	22.832	252	12549	0.420 ng/ul	98
25) Benzo(k)fluoranthene	22.876	252	16009	0.457 ng/ul	99
26) Benzo(a)pyrene	23.414	252	12471	0.428 ng/ul	98
27) Indeno(1,2,3-cd)pyrene	25.769	276	17432	0.428 ng/ul#	98
28) Dibenzo(a,h)anthracene	25.786	278	13531	0.427 ng/ul	99
29) Benzo(g,h,i)perylene	26.450	276	15141	0.443 ng/ul	98

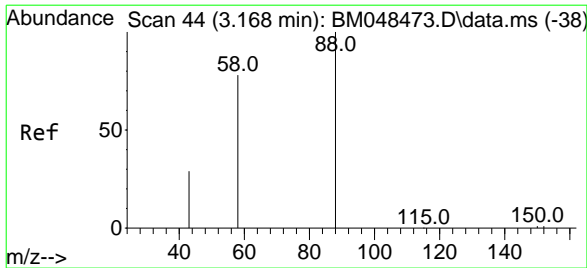
(#) = qualifier out of range (m) = manual integration (+) = signals summed

Data Path : Z:\svoasrv\HPCHEM1\BNA\_M\Data\BM110624\  
 Data File : BM048479.D  
 Acq On : 06 Nov 2024 16:13  
 Operator : RC/JU  
 Sample : PB164673BS  
 Misc :  
 ALS Vial : 11 Sample Multiplier: 1

Instrument :  
 BNA\_M  
 ClientSampleId :  
 SLCS673

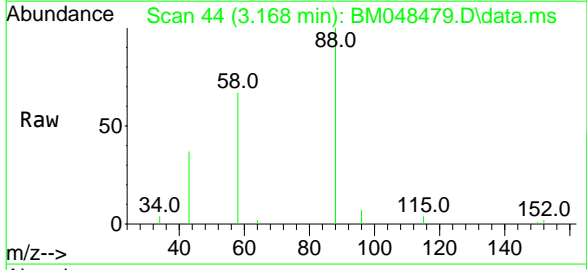
Quant Time: Nov 06 16:49:55 2024  
 Quant Method : Z:\svoasrv\HPCHEM1\BNA\_M\Methods\SFAM-EPA-SIM-BM110624.M  
 Quant Title : ASP BNA STANDARDS FOR 5 POINT CALIBRATION  
 QLast Update : Wed Nov 06 14:39:10 2024  
 Response via : Initial Calibration





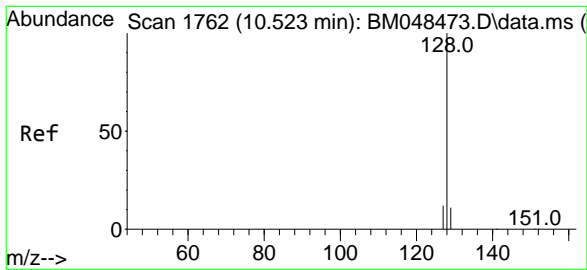
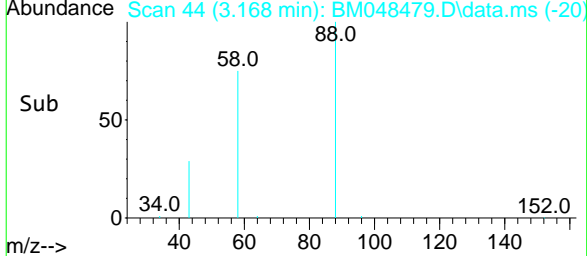
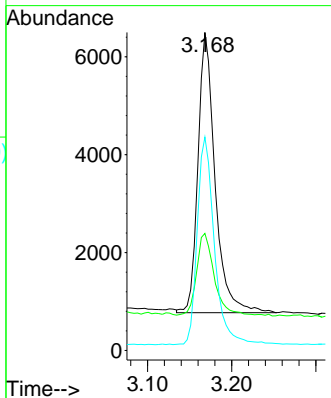
#2  
 1,4-Dioxane  
 Concen: 1.825 ng/ul  
 RT: 3.168 min Scan# 44  
 Delta R.T. 0.000 min  
 Lab File: BM048479.D  
 Acq: 06 Nov 2024 16:13

Instrument :  
 BNA\_M  
 ClientSampleId :  
 SLCS673



Tgt Ion: 88 Resp: 8077

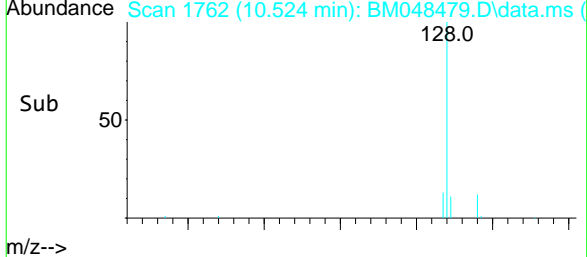
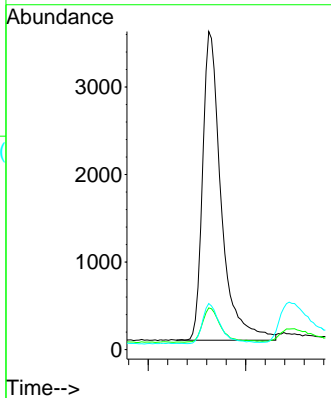
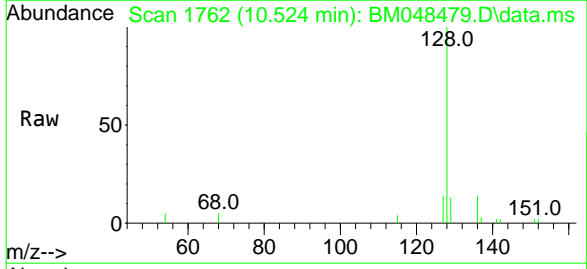
Ion	Ratio	Lower	Upper
88	100		
43	36.8	60.2	90.4#
58	67.1	44.2	66.2#

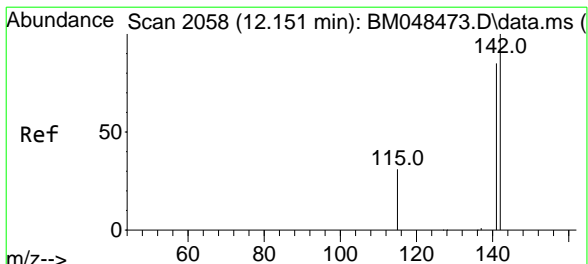


#5  
 Naphthalene  
 Concen: 0.374 ng/ul  
 RT: 10.524 min Scan# 1762  
 Delta R.T. 0.001 min  
 Lab File: BM048479.D  
 Acq: 06 Nov 2024 16:13

Tgt Ion: 128 Resp: 9335

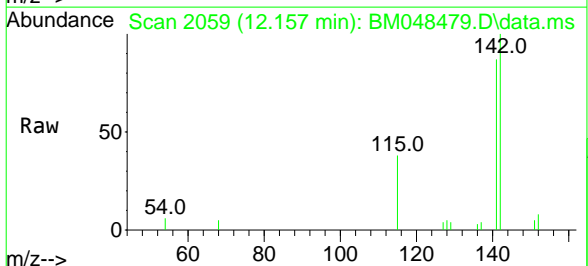
Ion	Ratio	Lower	Upper
128	100		
129	13.1	10.0	15.0
127	14.5	10.9	16.3



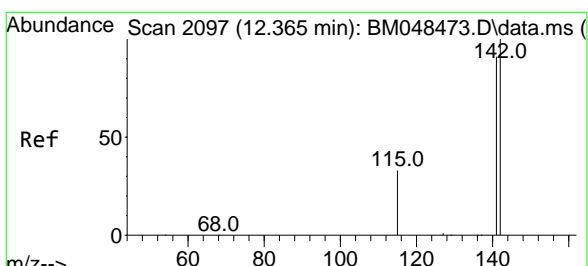
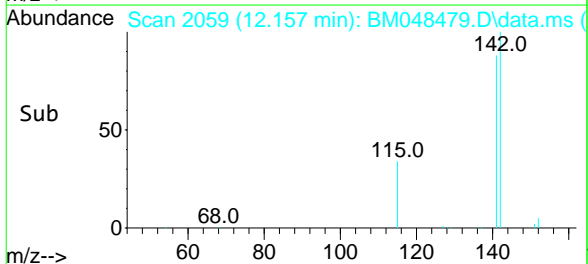
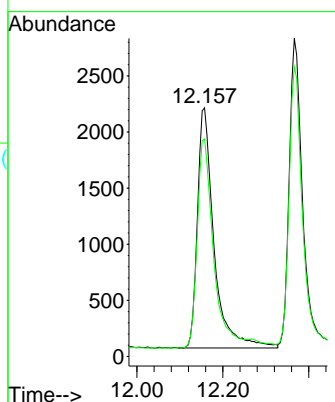


#7  
 2-Methylnaphthalene  
 Concen: 0.365 ng/u1  
 RT: 12.157 min Scan# 2058  
 Delta R.T. 0.007 min  
 Lab File: BM048479.D  
 Acq: 06 Nov 2024 16:13

Instrument : BNA\_M  
 ClientSampleId : SLCS673

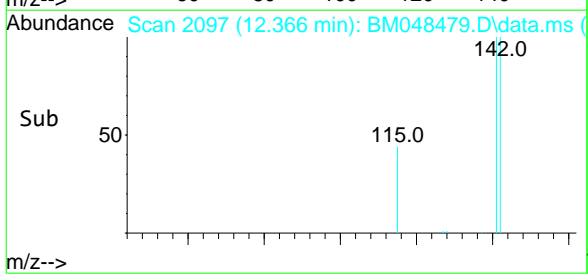
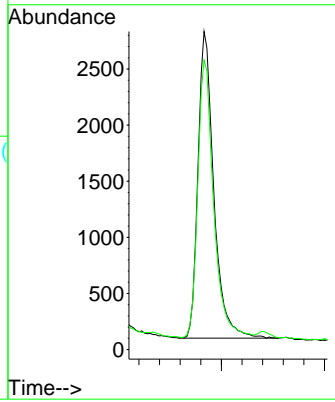
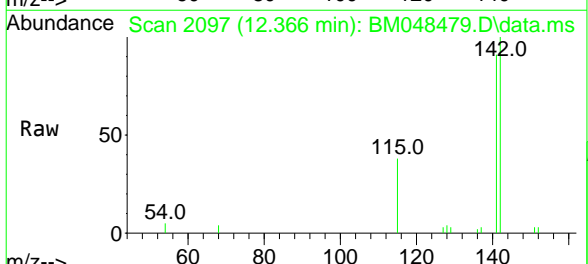


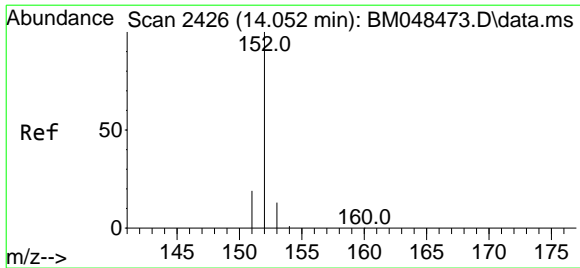
Tgt Ion:142 Resp: 5731  
 Ion Ratio Lower Upper  
 142 100  
 141 89.5 68.6 103.0



#8  
 1-Methylnaphthalene  
 Concen: 0.362 ng/u1  
 RT: 12.366 min Scan# 2097  
 Delta R.T. 0.001 min  
 Lab File: BM048479.D  
 Acq: 06 Nov 2024 16:13

Tgt Ion:142 Resp: 5825  
 Ion Ratio Lower Upper  
 142 100  
 141 91.0 72.8 109.2



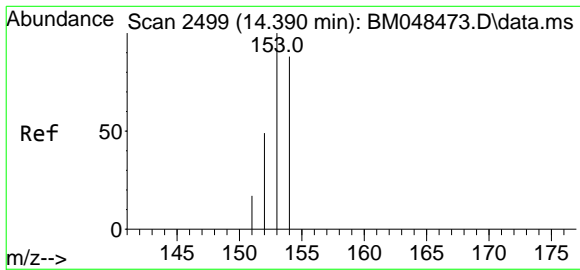
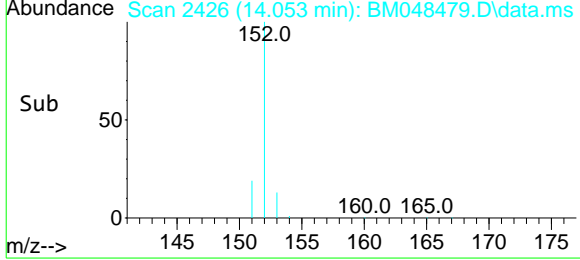
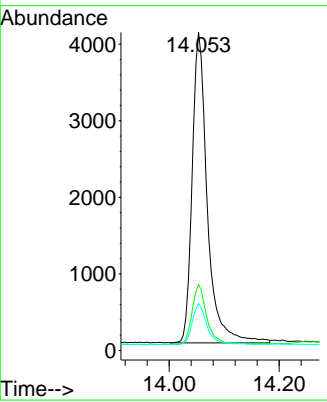
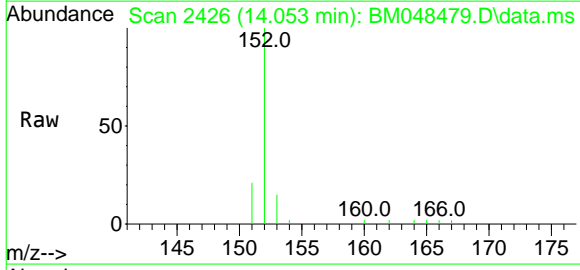


#10  
 Acenaphthylene  
 Concen: 0.378 ng/u1  
 RT: 14.053 min Scan# 2426  
 Delta R.T. 0.001 min  
 Lab File: BM048479.D  
 Acq: 06 Nov 2024 16:13

Instrument : BNA\_M  
 ClientSampleId : SLCS673

Tgt Ion:152 Resp: 7743

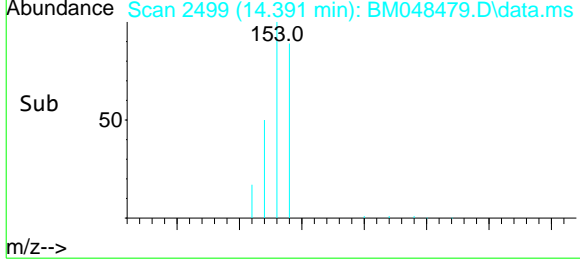
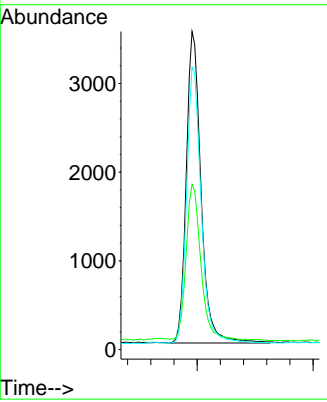
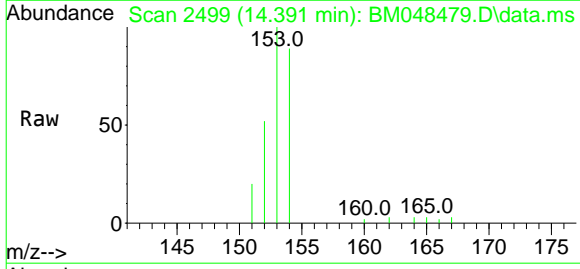
Ion	Ratio	Lower	Upper
152	100		
151	20.7	16.5	24.7
153	14.7	11.6	17.4

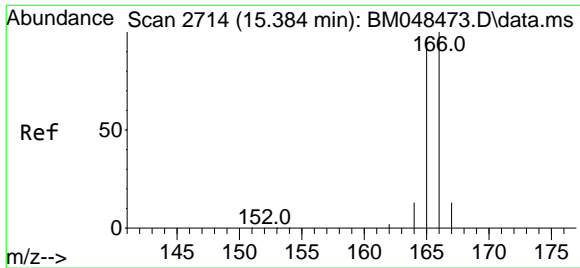


#11  
 Acenaphthene  
 Concen: 0.379 ng/u1  
 RT: 14.391 min Scan# 2499  
 Delta R.T. 0.001 min  
 Lab File: BM048479.D  
 Acq: 06 Nov 2024 16:13

Tgt Ion:153 Resp: 6209

Ion	Ratio	Lower	Upper
153	100		
152	52.0	41.1	61.7
154	88.8	70.3	105.5



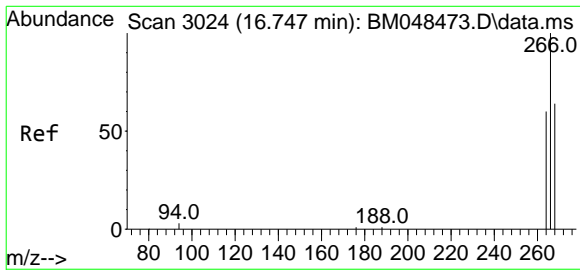
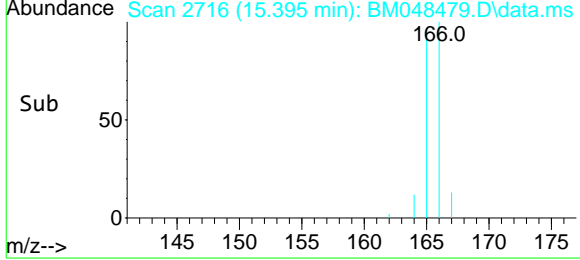
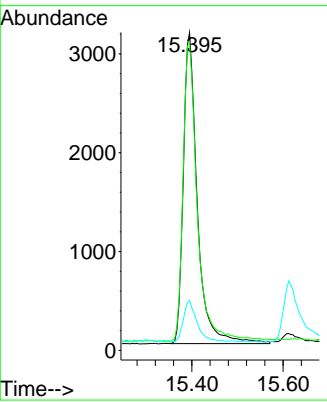
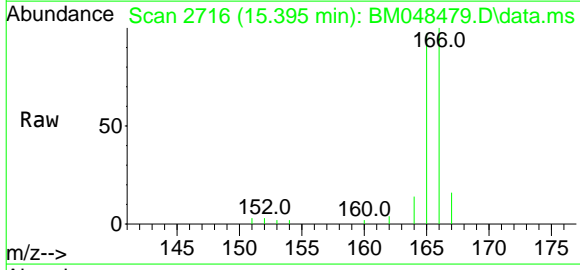


#12  
 Fluorene  
 Concen: 0.376 ng/u1  
 RT: 15.395 min Scan# 2714  
 Delta R.T. 0.011 min  
 Lab File: BM048479.D  
 Acq: 06 Nov 2024 16:13

Instrument : BNA\_M  
 ClientSampleId : SLCS673

Tgt Ion:166 Resp: 6704

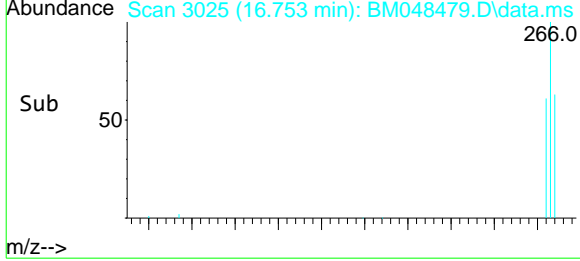
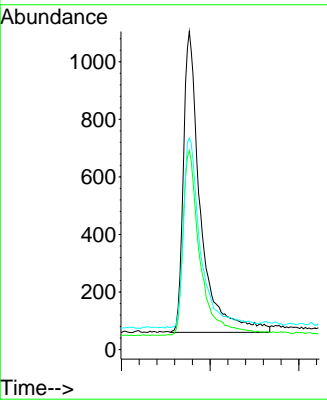
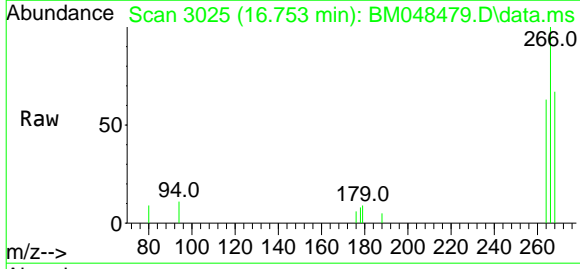
Ion	Ratio	Lower	Upper
166	100		
165	96.6	78.7	118.1
167	15.7	12.6	18.8

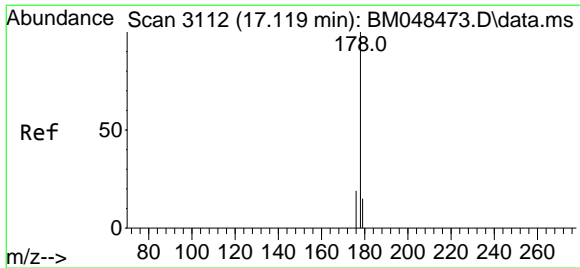


#14  
 Pentachlorophenol  
 Concen: 0.770 ng/u1  
 RT: 16.753 min Scan# 3025  
 Delta R.T. 0.006 min  
 Lab File: BM048479.D  
 Acq: 06 Nov 2024 16:13

Tgt Ion:266 Resp: 2798

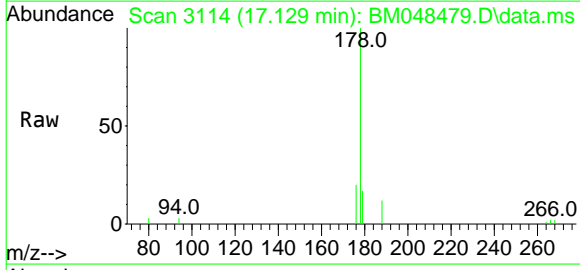
Ion	Ratio	Lower	Upper
266	100		
264	62.4	49.6	74.4
268	63.2	49.4	74.0



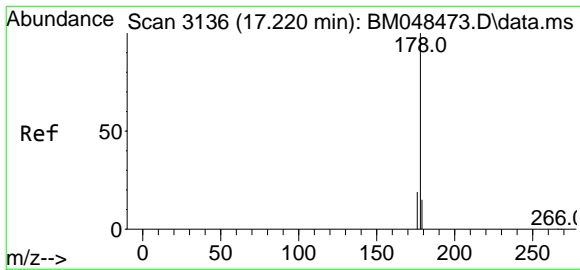
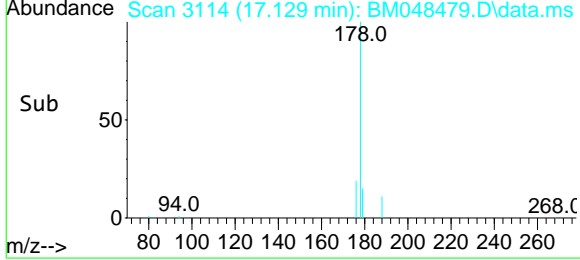
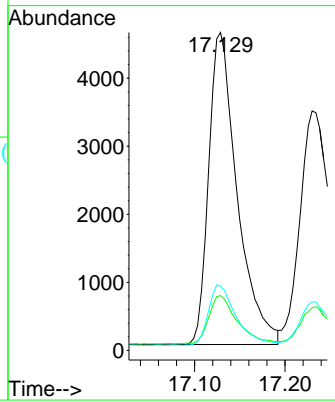


#15  
 Phenanthrene  
 Concen: 0.386 ng/u1  
 RT: 17.129 min Scan# 3112  
 Delta R.T. 0.010 min  
 Lab File: BM048479.D  
 Acq: 06 Nov 2024 16:13

Instrument : BNA\_M  
 ClientSampleId : SLCS673

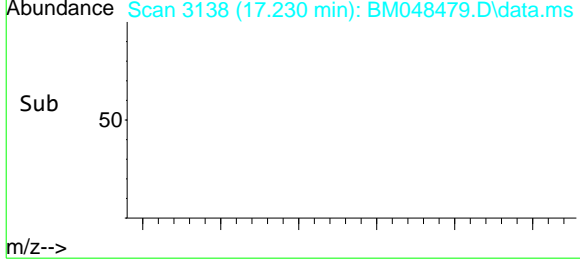
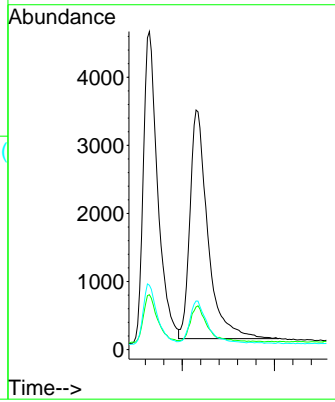
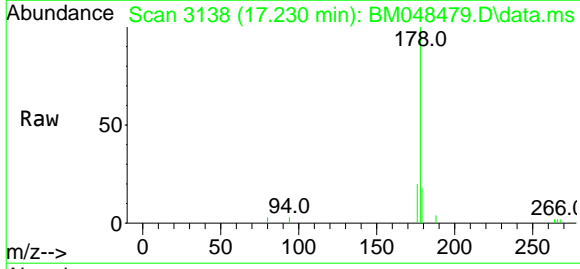


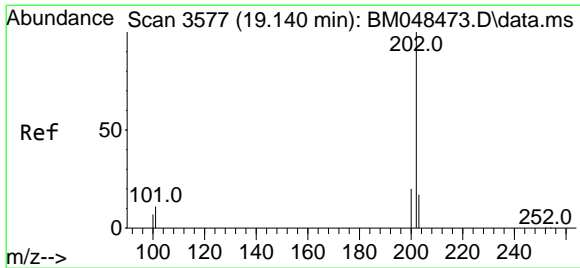
Tgt Ion	Ratio	Lower	Upper
178	100		
179	17.3	13.4	20.0
176	20.2	16.2	24.2



#16  
 Anthracene  
 Concen: 0.374 ng/u1  
 RT: 17.230 min Scan# 3138  
 Delta R.T. 0.010 min  
 Lab File: BM048479.D  
 Acq: 06 Nov 2024 16:13

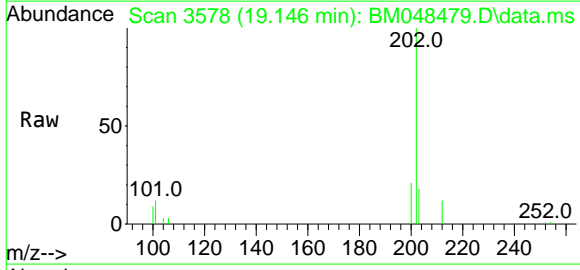
Tgt Ion	Ratio	Lower	Upper
178	100		
179	17.8	13.7	20.5
176	20.3	15.9	23.9





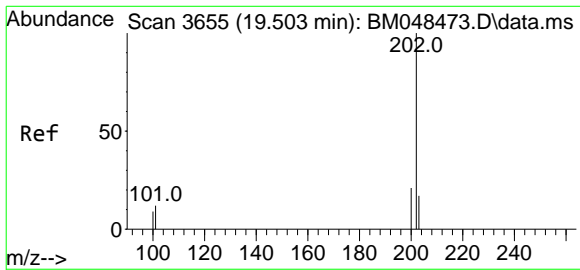
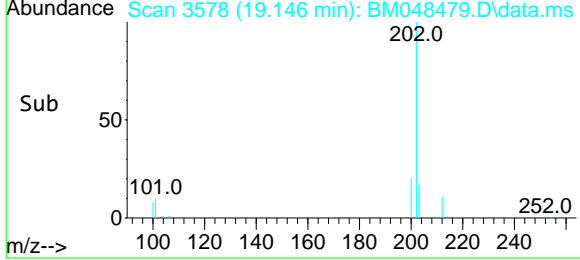
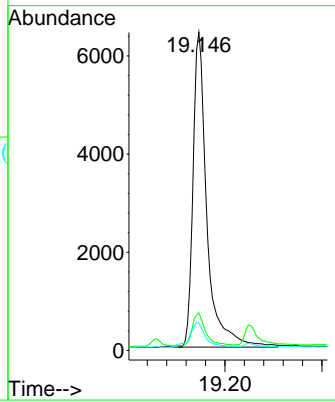
#19  
 Fluoranthene  
 Concen: 0.395 ng/u1  
 RT: 19.146 min Scan# 3577  
 Delta R.T. 0.006 min  
 Lab File: BM048479.D  
 Acq: 06 Nov 2024 16:13

Instrument : BNA\_M  
 ClientSampleId : SLCS673



Tgt Ion: 202 Resp: 12744

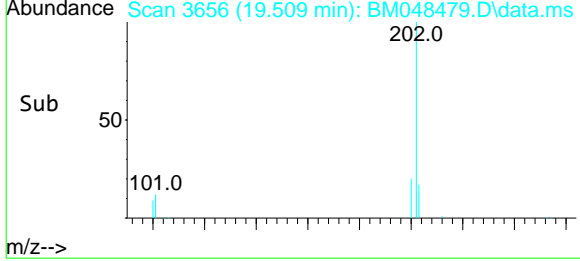
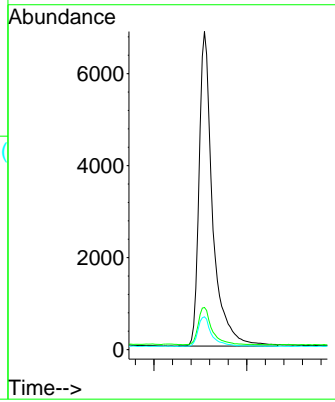
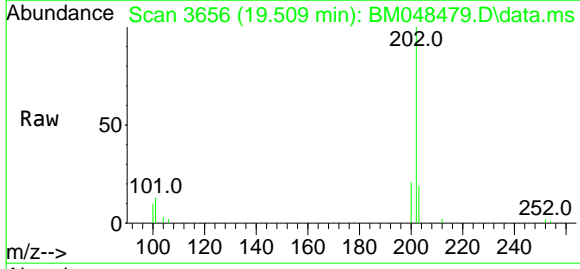
Ion	Ratio	Lower	Upper
202	100		
101	11.9	10.2	15.4
100	8.7	7.3	10.9



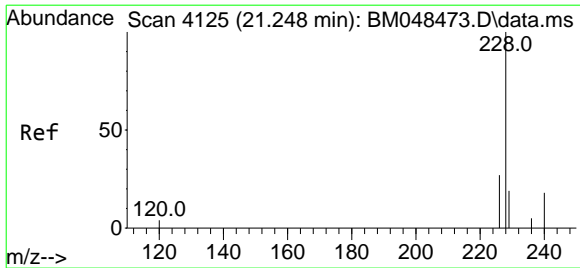
#20  
 Pyrene  
 Concen: 0.396 ng/u1  
 RT: 19.509 min Scan# 3656  
 Delta R.T. 0.006 min  
 Lab File: BM048479.D  
 Acq: 06 Nov 2024 16:13

Tgt Ion: 202 Resp: 13878

Ion	Ratio	Lower	Upper
202	100		
101	13.2	11.4	17.2
100	10.3	8.5	12.7



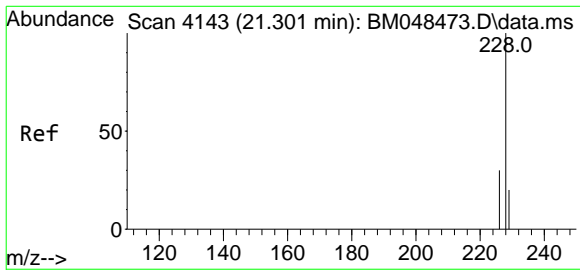
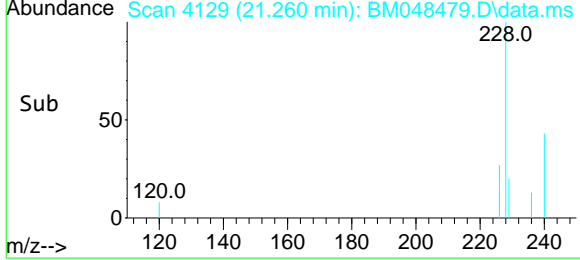
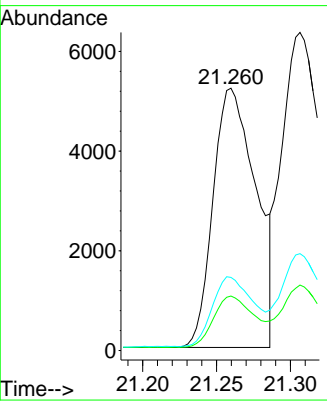
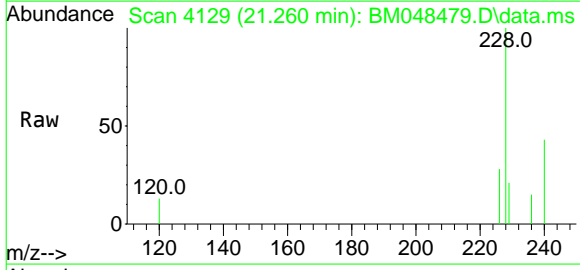




#21  
 Benzo(a)anthracene  
 Concen: 0.368 ng/u1  
 RT: 21.260 min Scan# 4129  
 Delta R.T. 0.011 min  
 Lab File: BM048479.D  
 Acq: 06 Nov 2024 16:13

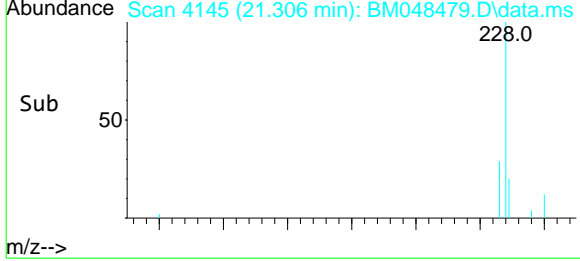
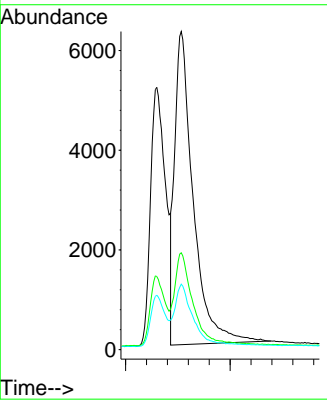
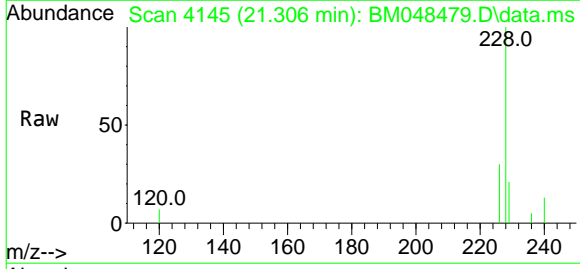
Instrument : BNA\_M  
 ClientSampleId : SLCS673

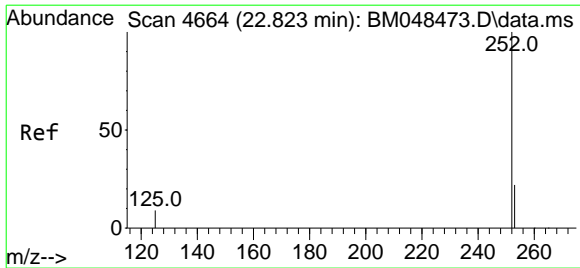
Tgt Ion	Resp	Lower	Upper
228	10504		
229	20.8	16.2	24.2
226	27.9	22.1	33.1



#22  
 Chrysene  
 Concen: 0.452 ng/u1  
 RT: 21.306 min Scan# 4145  
 Delta R.T. 0.005 min  
 Lab File: BM048479.D  
 Acq: 06 Nov 2024 16:13

Tgt Ion	Resp	Lower	Upper
228	15482		
226	30.4	24.4	36.6
229	20.6	16.5	24.7

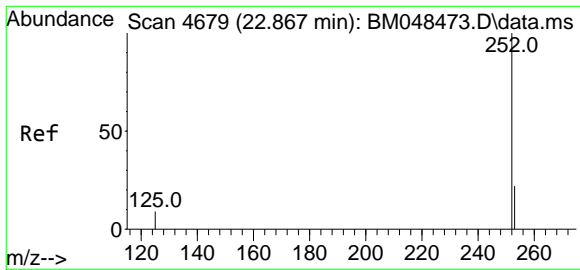
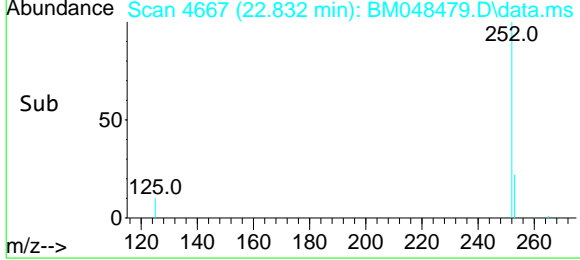
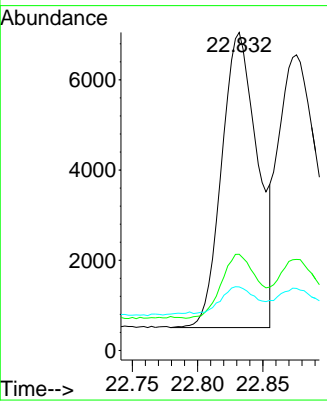
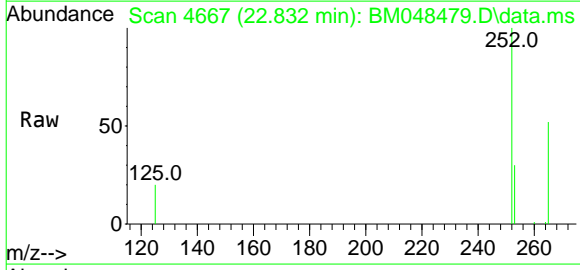




#24  
 Benzo(b)fluoranthene  
 Concen: 0.420 ng/u1  
 RT: 22.832 min Scan# 4667  
 Delta R.T. 0.008 min  
 Lab File: BM048479.D  
 Acq: 06 Nov 2024 16:13

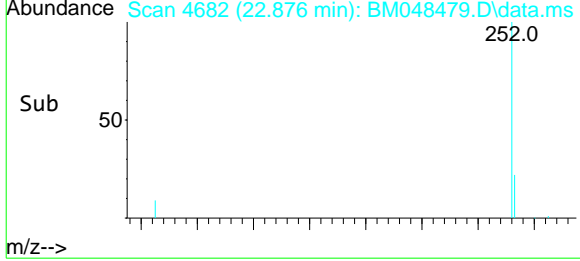
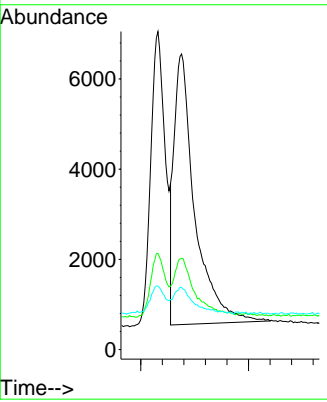
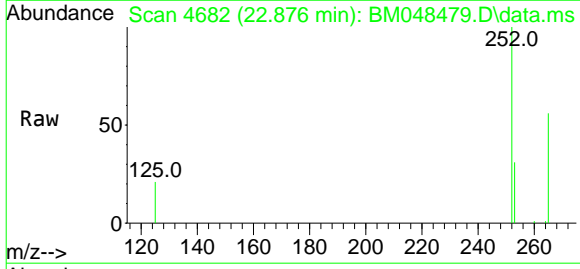
Instrument : BNA\_M  
 ClientSampleId : SLCS673

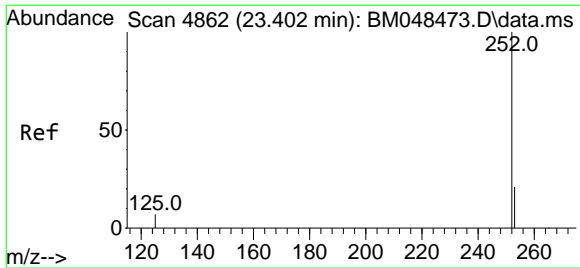
Tgt Ion	Resp	Lower	Upper
252	12549		
253	30.2	0.0	61.6
125	20.0	0.0	43.2



#25  
 Benzo(k)fluoranthene  
 Concen: 0.457 ng/u1  
 RT: 22.876 min Scan# 4682  
 Delta R.T. 0.008 min  
 Lab File: BM048479.D  
 Acq: 06 Nov 2024 16:13

Tgt Ion	Resp	Lower	Upper
252	16009		
253	30.8	25.0	37.4
125	21.0	17.4	26.0

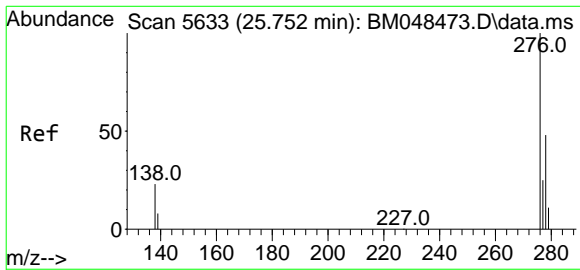
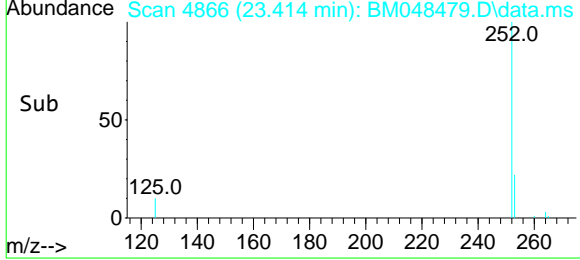
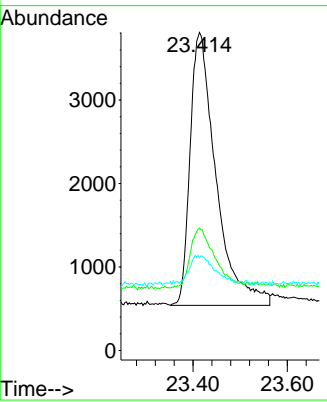
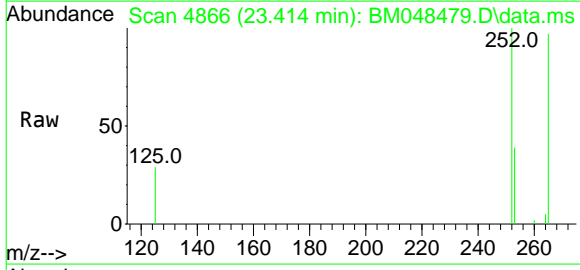




#26  
 Benzo(a)pyrene  
 Concen: 0.428 ng/u1  
 RT: 23.414 min Scan# 48  
 Delta R.T. 0.011 min  
 Lab File: BM048479.D  
 Acq: 06 Nov 2024 16:13

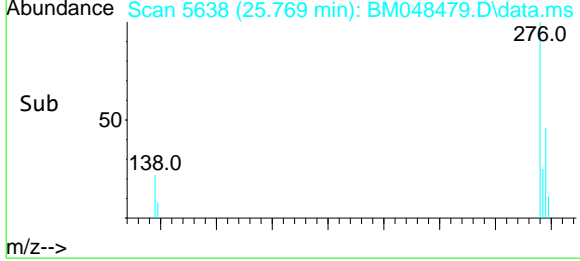
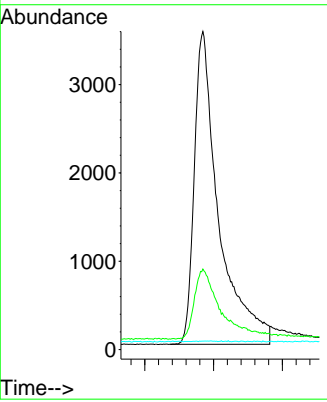
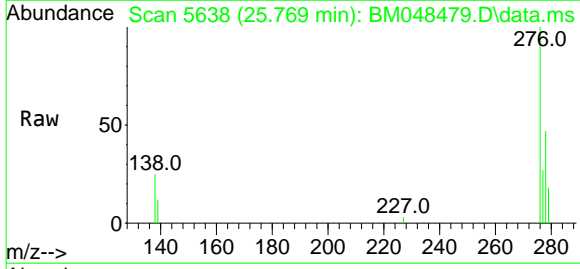
Instrument : BNA\_M  
 ClientSampleId : SLCS673

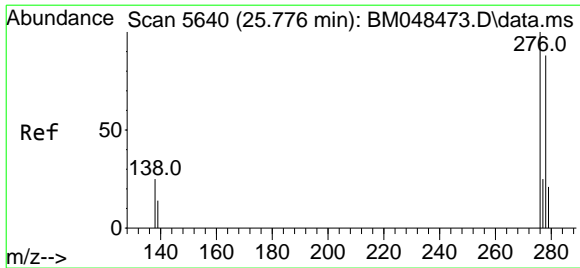
Tgt Ion	Ratio	Lower	Upper
252	100		
253	38.5	29.6	44.4
125	29.2	23.9	35.9



#27  
 Indeno(1,2,3-cd)pyrene  
 Concen: 0.428 ng/u1  
 RT: 25.769 min Scan# 5638  
 Delta R.T. 0.016 min  
 Lab File: BM048479.D  
 Acq: 06 Nov 2024 16:13

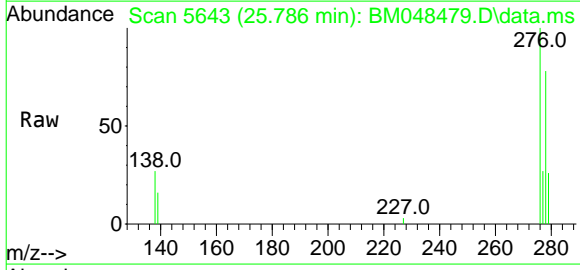
Tgt Ion	Ratio	Lower	Upper
276	100		
138	24.3	20.1	30.1
227	0.0	0.1	0.1#





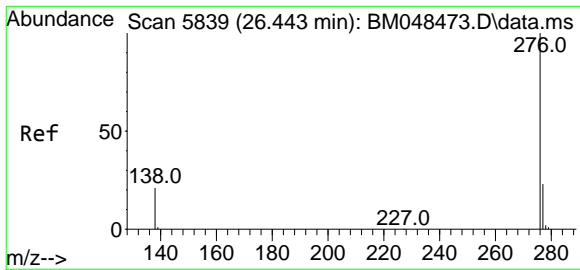
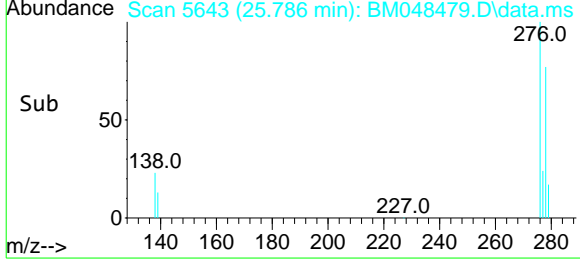
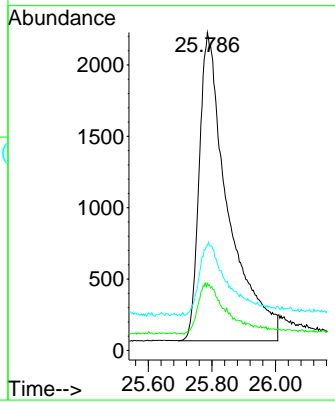
#28  
 Dibenzo(a,h)anthracene  
 Concen: 0.427 ng/ul  
 RT: 25.786 min Scan# 5640  
 Delta R.T. 0.010 min  
 Lab File: BM048479.D  
 Acq: 06 Nov 2024 16:13

Instrument : BNA\_M  
 ClientSampleId : SLCS673



Tgt Ion: 278 Resp: 13531

Ion	Ratio	Lower	Upper
278	100		
139	21.1	17.8	26.8
279	33.0	26.6	39.8



#29  
 Benzo(g,h,i)perylene  
 Concen: 0.443 ng/ul  
 RT: 26.450 min Scan# 5841  
 Delta R.T. 0.006 min  
 Lab File: BM048479.D  
 Acq: 06 Nov 2024 16:13

Tgt Ion: 276 Resp: 15141

Ion	Ratio	Lower	Upper
276	100		
138	24.3	21.0	31.6
277	25.7	20.5	30.7

