

Data Path : Z:\svoasrv\HPCHEM1\BNA_M\Data\BM110824\
 Data File : BM048543.D
 Acq On : 08 Nov 2024 23:31
 Operator : RC/JU
 Sample : PB164769BS
 Misc :
 ALS Vial : 24 Sample Multiplier: 1

Instrument :
 BNA_M
ClientSampleId :
 SLCS769

Manual Integrations
APPROVED
 Reviewed By :Yogesh Patel 11/10/2024
 Supervised By :mohammad ahmed 11/11/2024

Quant Time: Nov 09 00:06:04 2024
 Quant Method : Z:\svoasrv\HPCHEM1\BNA_M\Methods\SFAM-EPA-BM110724.MA.M
 Quant Title : SVOA CALIBRATION
 QLast Update : Thu Nov 07 22:50:20 2024
 Response via : Initial Calibration

Compound	R.T.	QIon	Response	Conc	Units	Dev(Min)
Internal Standards						
1) 1,4-Dichlorobenzene-d4	7.663	152	117009	20.000	ng/ul	0.00
20) Naphthalene-d8	10.451	136	473813	20.000	ng/ul	0.00
38) Acenaphthene-d10	14.310	164	292262	20.000	ng/ul	0.00
64) Phenanthrene-d10	17.056	188	577592	20.000	ng/ul	0.00
79) Chrysene-d12	21.280	240	568737	20.000	ng/ul	0.00
88) Perylene-d12	24.191	264	670967	20.000	ng/ul	0.00
System Monitoring Compounds						
3) 1,4-Dioxane-d8	3.128	96	20823	7.094	ng/uL	0.00
4) Pyridine-d5	3.540	84	274230	33.902	ng/ul	0.00
7) Phenol-d5	6.845	99	332377	37.315	ng/ul	0.00
9) Bis-(2-Chloroethyl)eth...	6.998	67	195119	36.471	ng/ul	0.00
11) 2-Chlorophenol-d4	7.198	132	275284	37.310	ng/ul	0.00
15) 4-Methylphenol-d8	8.381	113	253447	36.188	ng/ul	0.00
21) Nitrobenzene-d5	8.822	128	128928	37.543	ng/ul	0.00
24) 2-Nitrophenol-d4	9.539	143	141089	38.626	ng/ul	0.00
28) 2,4-Dichlorophenol-d3	10.080	165	257495	37.947	ng/ul	0.00
31) 4-Chloroaniline-d4	10.592	131	337634	35.030	ng/ul	0.00
46) Dimethylphthalate-d6	13.727	166	745130	39.940	ng/ul	0.00
49) Acenaphthylene-d8	14.004	160	872423	39.663	ng/ul	0.00
54) 4-Nitrophenol-d4	14.533	143	137266	39.613	ng/ul	0.00
60) Fluorene-d10	15.310	176	623156	38.265	ng/ul	0.00
65) 4,6-Dinitro-2-methylph...	15.439	200	117781	40.535	ng/ul	0.00
73) Anthracene-d10	17.156	188	926463	37.904	ng/ul	0.00
81) Pyrene-d10	19.450	212	1143752	40.072	ng/ul	0.00
92) Benzo(a)pyrene-d12	23.997	264	1273800	40.632	ng/ul	0.00
Target Compounds						
2) 1,4-Dioxane	3.157	88	42528	13.203	ng/uL	97
5) Pyridine	3.557	79	284214	34.228	ng/ul	99
6) Benzaldehyde	6.810	77	172203	39.122	ng/ul	94
8) Phenol	6.869	94	353162	37.790	ng/ul	98
10) Bis(2-Chloroethyl)ether	7.092	93	271830	37.013	ng/ul	99
12) 2-Chlorophenol	7.228	128	289697	37.899	ng/ul	99
13) 2-Methylphenol	8.116	108	255839	36.982	ng/ul	99
14) 2,2'-oxybis(1-Chloropr...	8.186	45	406859	37.671	ng/ul	98
16) Acetophenone	8.486	105	417447	38.237	ng/ul	99
17) N-Nitroso-di-n-propyla...	8.475	70	200599	39.099	ng/ul	99
18) 4-Methylphenol	8.445	108	282278	37.265	ng/ul	99
19) Hexachloroethane	8.733	117	120023	37.156	ng/ul	94
22) Nitrobenzene	8.863	77	304037	39.046	ng/ul	96
23) Isophorone	9.386	82	564862	39.218	ng/ul	99
25) 2-Nitrophenol	9.575	139	157990	39.688	ng/ul	97
26) 2,4-Dimethylphenol	9.639	107	188852	25.399	ng/ul	97
27) Bis(2-Chloroethoxy)met...	9.869	93	347306	38.631	ng/ul	99
29) 2,4-Dichlorophenol	10.104	162	262123	38.082	ng/ul	97
30) Naphthalene	10.498	128	903971	37.694	ng/ul	99
32) 4-Chloroaniline	10.616	127	278802	30.678	ng/ul	100
33) Hexachlorobutadiene	10.780	225	169508	36.391	ng/ul	98
34) Caprolactam	11.398	113	84050	38.744	ng/ul	96
35) 4-Chloro-3-methylphenol	11.757	107	265998	39.937	ng/ul	98
36) 2-Methylnaphthalene	12.121	142	584980	38.122	ng/ul	100

Data Path : Z:\svoasrv\HPCHEM1\BNA_M\Data\BM110824\
 Data File : BM048543.D
 Acq On : 08 Nov 2024 23:31
 Operator : RC/JU
 Sample : PB164769BS
 Misc :
 ALS Vial : 24 Sample Multiplier: 1

Instrument :

BNA_M

ClientSampleId :

SLCS769

Manual Integrations

APPROVED

Reviewed By :Yogesh Patel 11/10/2024

Supervised By :mohammad ahmed 11/11/2024

Quant Time: Nov 09 00:06:04 2024
 Quant Method : Z:\svoasrv\HPCHEM1\BNA_M\Methods\SFAM-EPA-BM110724.MA.M
 Quant Title : SVOA CALIBRATION
 QLast Update : Thu Nov 07 22:50:20 2024
 Response via : Initial Calibration

Compound	R.T.	QIon	Response	Conc	Units	Dev(Min)	
37) 1-Methylnaphthalene	12.339	142	583095	37.028	ng/ul	99	11/10/2024
39) 1,2,4,5-Tetrachloroben...	12.492	216	309057	36.902	ng/ul	99	Supervised By :mohammad ahmed
40) Hexachlorocyclopentadiene	12.469	237	119924	28.014	ng/ul	100	
41) 2,4,6-Trichlorophenol	12.745	196	189807	35.879	ng/ul	98	
42) 2,4,5-Trichlorophenol	12.816	196	210819	37.421	ng/ul	96	
43) 1,1'-Biphenyl	13.139	154	753844	37.723	ng/ul	99	
44) 2-Chloronaphthalene	13.180	162	599446	38.013	ng/ul	98	11/11/2024
45) 2-Nitroaniline	13.398	65	167458	42.286	ng/ul	94	
47) Dimethylphthalate	13.774	163	763860	40.760	ng/ul	99	
48) 2,6-Dinitrotoluene	13.898	165	153209	42.884	ng/ul	98	
50) Acenaphthylene	14.033	152	989195	40.799	ng/ul	100	
51) 3-Nitroaniline	14.227	138	163426	42.123	ng/ul	99	
52) Acenaphthene	14.374	153	659701	38.649	ng/ul	100	
53) 2,4-Dinitrophenol	14.445	184	74653	38.863	ng/ul	91	
55) 4-Nitrophenol	14.551	109	101469	40.504	ng/ul	97	
56) Dibenzofuran	14.715	168	901753	38.295	ng/ul	99	
57) 2,4-Dinitrotoluene	14.692	165	217351	41.854	ng/ul	98	
58) 2,3,4,6-Tetrachlorophenol	14.945	232	163921	34.979	ng/ul	99	
59) Diethylphthalate	15.145	149	729031	39.484	ng/ul	99	
61) Fluorene	15.362	166	719319	38.584	ng/ul	99	
62) 4-Chlorophenyl-phenyle...	15.357	204	349163	38.016	ng/ul	98	
63) 4-Nitroaniline	15.398	138	170852m	44.721	ng/ul		
66) 4,6-Dinitro-2-methylph...	15.457	198	130378	41.233	ng/ul	96	
67) N-Nitrosodiphenylamine	15.574	169	609218	40.019	ng/ul	99	
68) 4-Bromophenyl-phenylether	16.251	248	214784	39.430	ng/ul	95	
69) Hexachlorobenzene	16.368	284	257320	39.140	ng/ul	99	
70) Atrazine	16.533	200	90246	16.288	ng/ul	97	
71) Pentachlorophenol	16.715	266	138747	33.206	ng/ul	95	
72) Phenanthrene	17.098	178	1145974	40.005	ng/ul	99	
74) Anthracene	17.192	178	1115937	38.816	ng/ul	99	
75) 1,2,3,4-Tetrachloroben...	13.104	216	301093	36.542	ng/uL	100	
76) Pentachlorobenzene	14.633	250	292772	36.469	ng/uL	99	
77) Carbazole	17.468	167	1078277	41.640	ng/ul	99	
78) Di-n-butylphthalate	18.027	149	1282714	42.133	ng/ul	99	
80) Fluoranthene	19.121	202	1341333	40.502	ng/ul	99	
82) Pyrene	19.480	202	1468668	40.898	ng/ul	99	
83) Butylbenzylphthalate	20.386	149	597219	43.296	ng/ul	99	
84) 3,3'-Dichlorobenzidine	21.191	252	436140	42.206	ng/ul	99	
85) Benzo(a)anthracene	21.262	228	1430294	39.894	ng/ul	99	
86) Bis(2-ethylhexyl)phtha...	21.191	149	850262	42.254	ng/ul	99	
87) Chrysene	21.321	228	1371209	39.801	ng/ul	100	
89) Di-n-octyl phthalate	22.291	149	1509338	39.904	ng/ul	100	
90) Benzo(b)fluoranthene	23.274	252	1456049	39.421	ng/ul	100	
91) Benzo(k)fluoranthene	23.333	252	1470887	39.941	ng/ul	100	
93) Benzo(a)pyrene	24.056	252	1382034	39.798	ng/ul	100	
94) Indeno(1,2,3-cd)pyrene	27.473	276	1846599	40.918	ng/ul	98	
95) Dibenzo(a,h)anthracene	27.520	278	1525271	41.379	ng/ul	99	
96) Benzo(g,h,i)perylene	28.491	276	1453592	41.079	ng/ul	100	

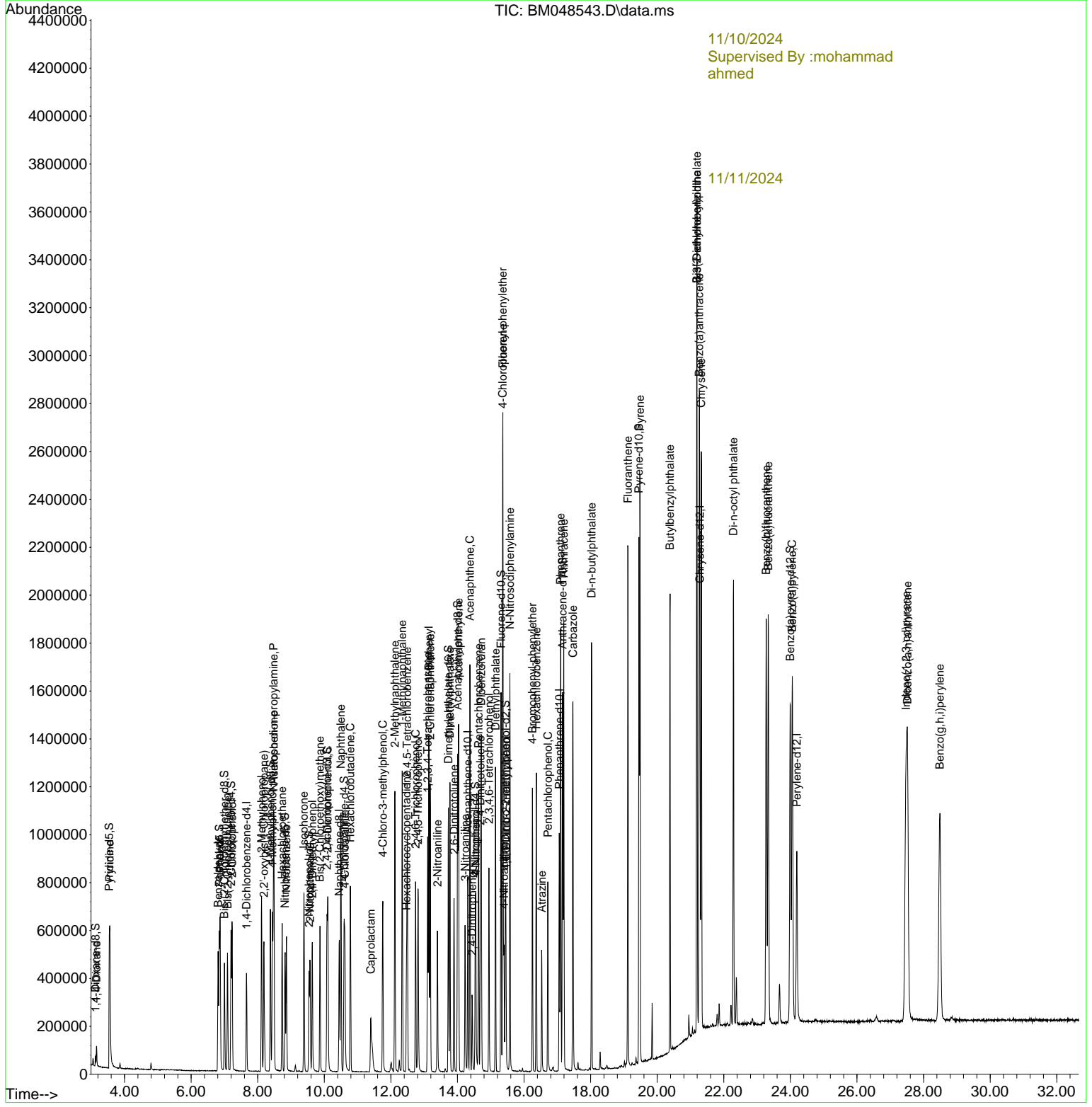
(#) = qualifier out of range (m) = manual integration (+) = signals summed

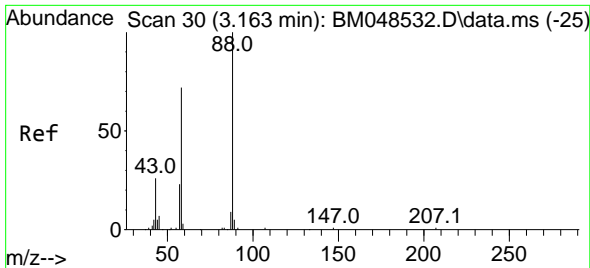
Data Path : Z:\svoasrv\HPCHEM1\BNA_M\Data\BM110824\
 Data File : BM048543.D
 Acq On : 08 Nov 2024 23:31
 Operator : RC/JU
 Sample : PB164769BS
 Misc :
 ALS Vial : 24 Sample Multiplier: 1

Instrument :
 BNA_M
ClientSampleId :
 SLCS769

Quant Time: Nov 09 00:06:04 2024
 Quant Method : Z:\svoasrv\HPCHEM1\BNA_M\Methods\SFAM-EPA-BM110724.MA.M
 Quant Title : SVOA CALIBRATION
 QLast Update : Thu Nov 07 22:50:20 2024
 Response via : Initial Calibration

Manual Integrations
APPROVED
 Reviewed By :Yogesh Patel 11/10/2024
 Supervised By :mohammad ahmed 11/11/2024





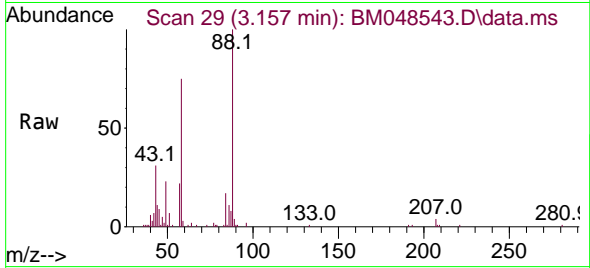
#2
 1,4-Dioxane
 Concen: 13.203 ng/uL
 RT: 3.157 min Scan# 29
 Delta R.T. -0.006 min
 Lab File: BM048543.D
 Acq: 08 Nov 2024 23:31

Instrument :

BNA_M

ClientSampleId :

SLCS769



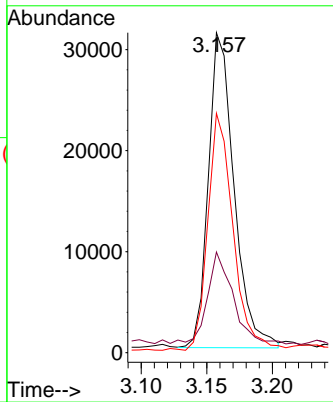
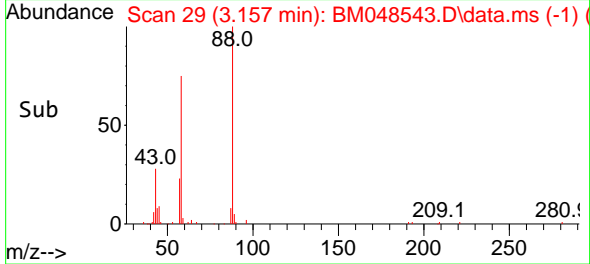
Tgt Ion: 88 Resp: 42528
 Ion Ratio Lower Upper
 88 100
 43 31.5 22.1 33.1
 58 74.8 60.7 91.1

Manual Integrations

APPROVED

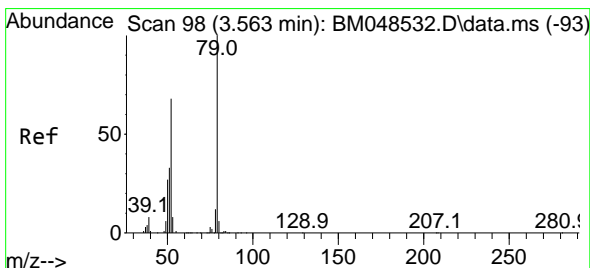
Reviewed By :Yogesh Patel 11/10/2024

Supervised By :mohammad ahmed 11/11/2024

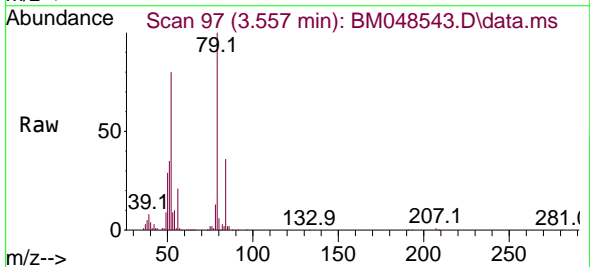


11/10/2024
 Supervised By :mohammad
 ahmed

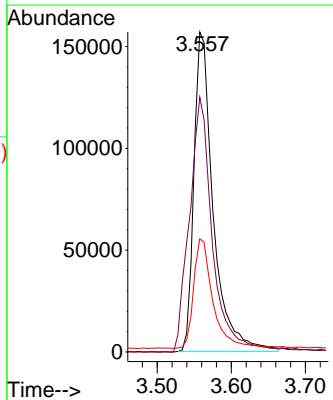
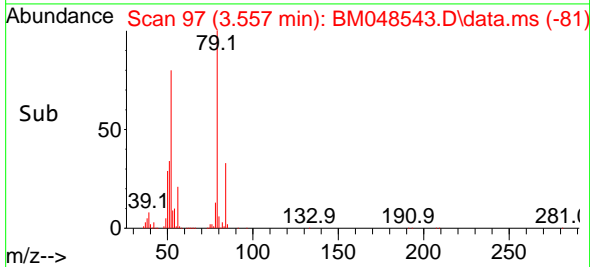
11/11/2024

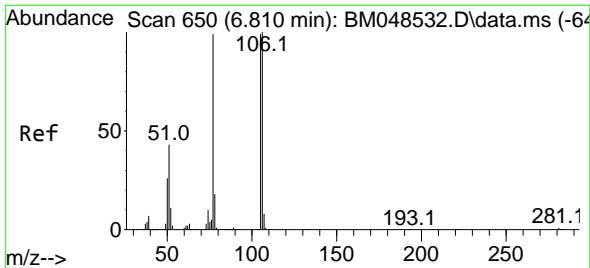


#5
 Pyridine
 Concen: 34.228 ng/uL
 RT: 3.557 min Scan# 97
 Delta R.T. -0.006 min
 Lab File: BM048543.D
 Acq: 08 Nov 2024 23:31



Tgt Ion: 79 Resp: 284214
 Ion Ratio Lower Upper
 79 100
 52 79.6 62.6 94.0
 51 35.4 27.8 41.8





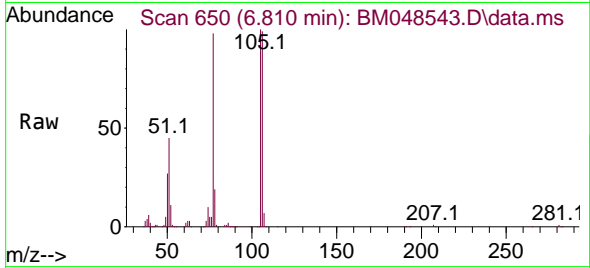
#6
Benzaldehyde
Concen: 39.122 ng/u1
RT: 6.810 min Scan# 61
Delta R.T. 0.000 min
Lab File: BM048543.D
Acq: 08 Nov 2024 23:31

Instrument :

BNA_M

ClientSampleId :

SLCS769



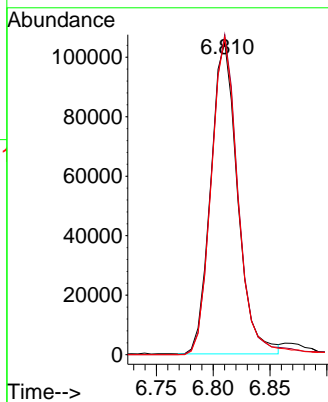
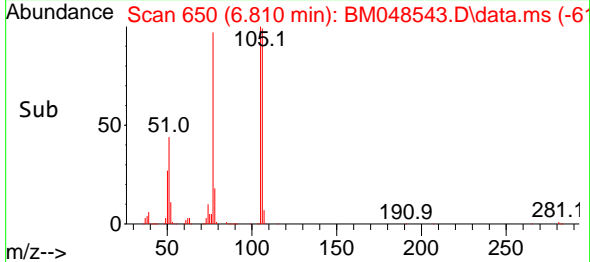
Tgt Ion: 77 Resp: 17220
Ion Ratio Lower Upper
77 100
105 102.5 78.0 117.0
106 101.7 76.6 115.0

Manual Integrations

APPROVED

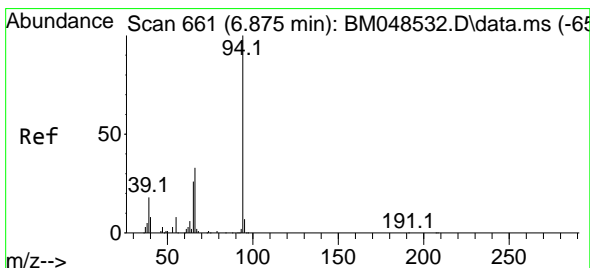
Reviewed By :Yogesh Patel 11/10/2024

Supervised By :mohammad ahmed 11/11/2024

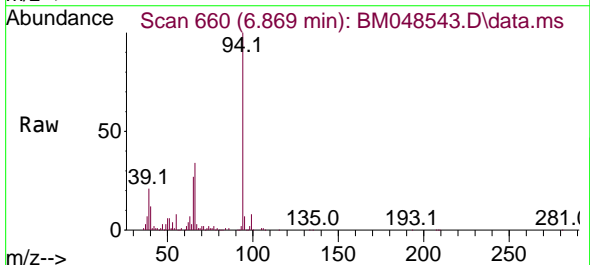


11/10/2024
Supervised By :mohammad
ahmed

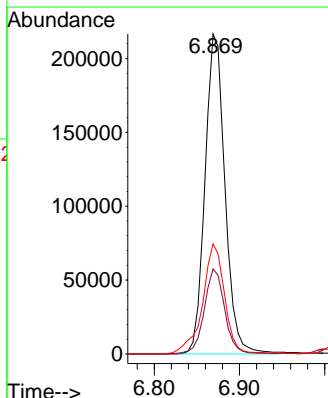
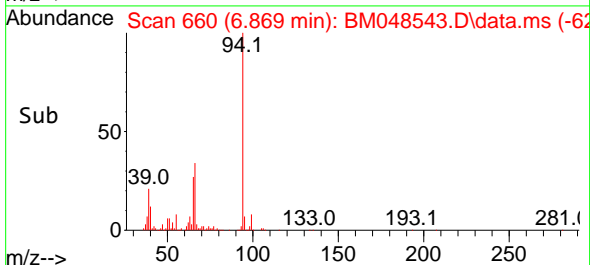
11/11/2024

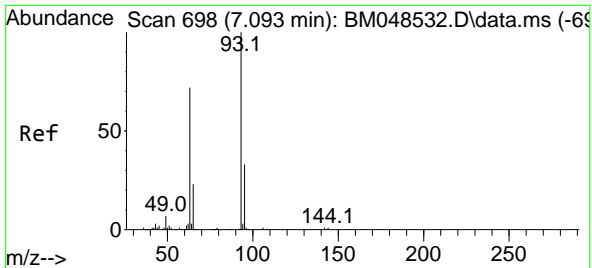


#8
Phenol
Concen: 37.790 ng/u1
RT: 6.869 min Scan# 660
Delta R.T. -0.006 min
Lab File: BM048543.D
Acq: 08 Nov 2024 23:31



Tgt Ion: 94 Resp: 353162
Ion Ratio Lower Upper
94 100
65 26.5 20.8 31.2
66 34.4 26.1 39.1





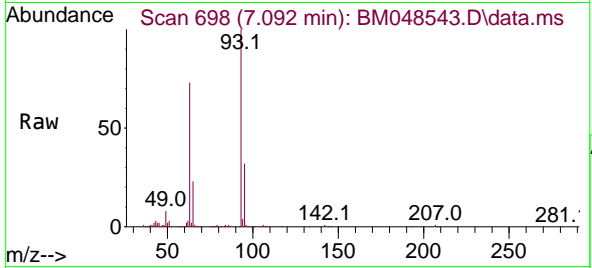
#10
 Bis(2-Chloroethyl)ether
 Concen: 37.013 ng/ul
 RT: 7.092 min Scan# 698
 Delta R.T. 0.000 min
 Lab File: BM048543.D
 Acq: 08 Nov 2024 23:31

Instrument :

BNA_M

ClientSampleId :

SLCS769

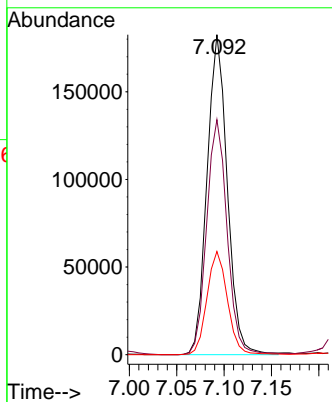
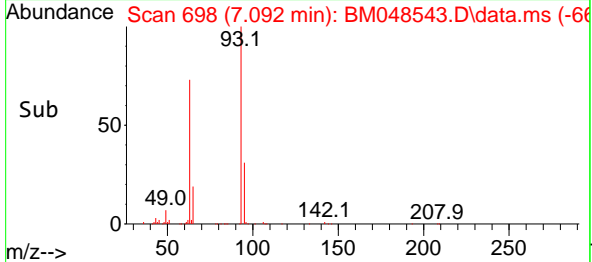


Tgt Ion: 93 Resp: 271830

Ion	Ratio	Lower	Upper
93	100		
63	73.5	59.6	89.4
95	32.3	25.0	37.6

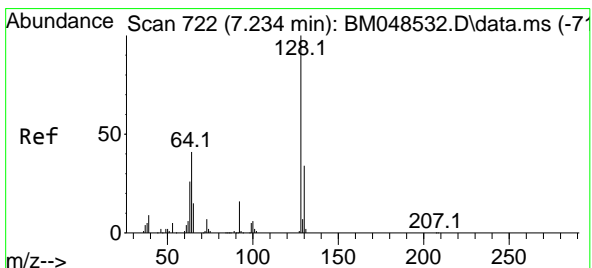
Manual Integrations
 APPROVED

Reviewed By :Yogesh Patel 11/10/2024
 Supervised By :mohammad ahmed 11/11/2024

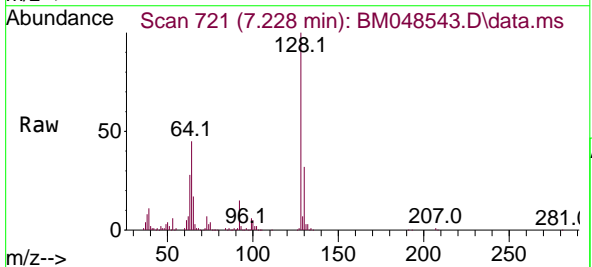


11/10/2024
 Supervised By :mohammad ahmed

11/11/2024

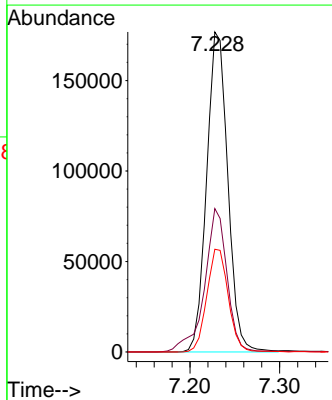
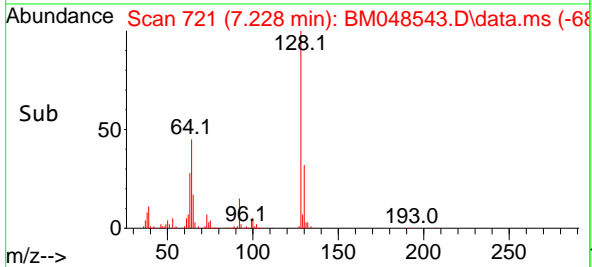


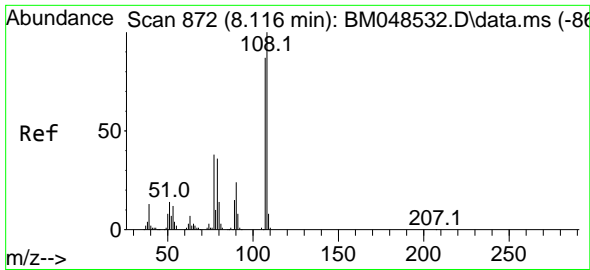
#12
 2-Chlorophenol
 Concen: 37.899 ng/ul
 RT: 7.228 min Scan# 721
 Delta R.T. -0.006 min
 Lab File: BM048543.D
 Acq: 08 Nov 2024 23:31



Tgt Ion:128 Resp: 289697

Ion	Ratio	Lower	Upper
128	100		
64	44.8	35.2	52.8
130	32.1	25.8	38.6





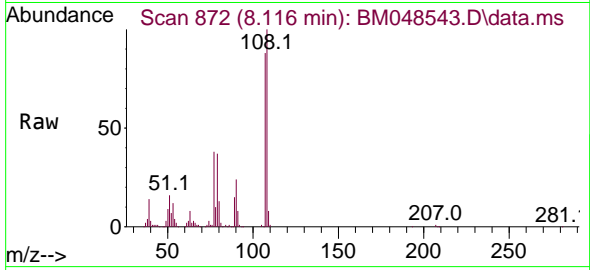
#13
 2-Methylphenol
 Concen: 36.982 ng/ul
 RT: 8.116 min Scan# 81
 Delta R.T. 0.000 min
 Lab File: BM048543.D
 Acq: 08 Nov 2024 23:31

Instrument :

BNA_M

ClientSampleId :

SLCS769



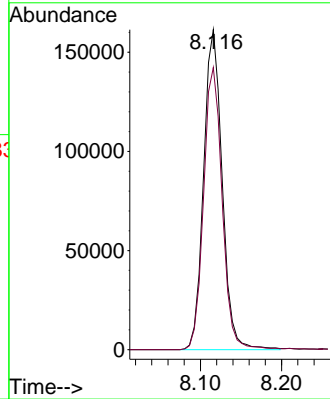
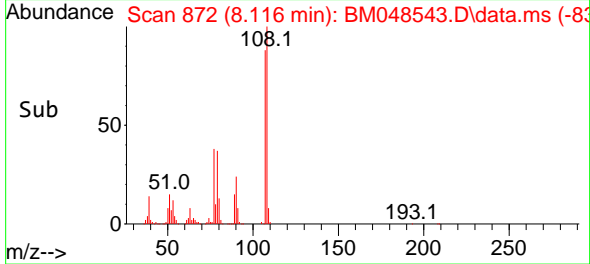
Tgt Ion:108 Resp: 255839
 Ion Ratio Lower Upper
 108 100
 107 88.1 71.5 107.3

Manual Integrations

APPROVED

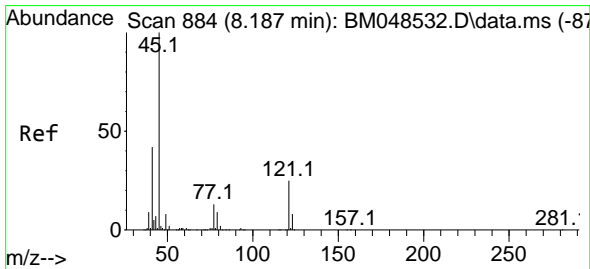
Reviewed By :Yogesh Patel 11/10/2024

Supervised By :mohammad ahmed 11/11/2024

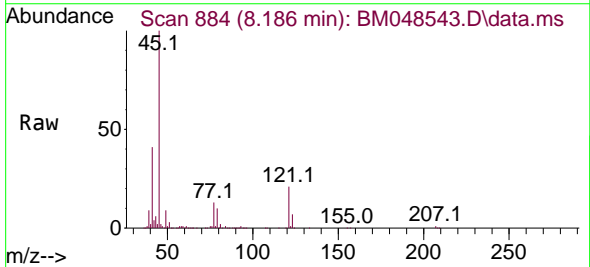


11/10/2024
 Supervised By :mohammad
 ahmed

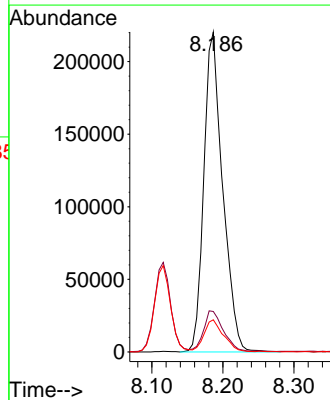
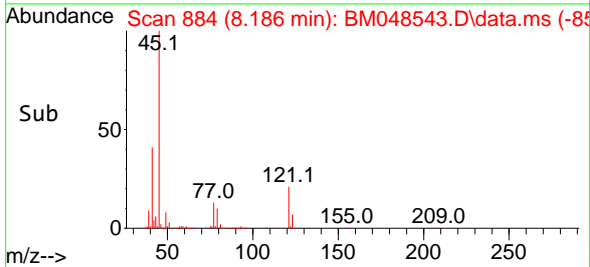
11/11/2024

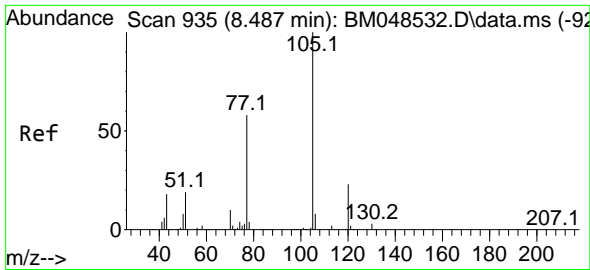


#14
 2,2'-oxybis(1-Chloropropane)
 Concen: 37.671 ng/ul
 RT: 8.186 min Scan# 884
 Delta R.T. 0.000 min
 Lab File: BM048543.D
 Acq: 08 Nov 2024 23:31



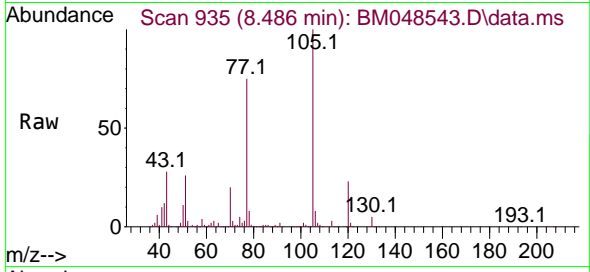
Tgt Ion: 45 Resp: 406859
 Ion Ratio Lower Upper
 45 100
 77 12.7 10.6 16.0
 79 10.0 7.4 11.2





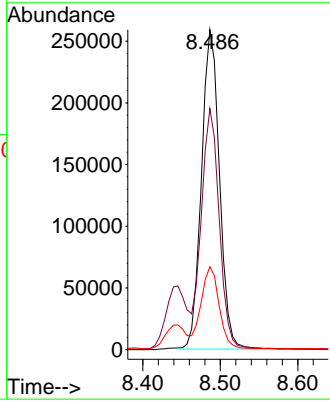
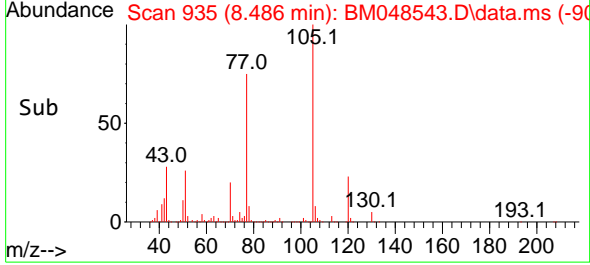
#16
 Acetophenone
 Concen: 38.237 ng/ul
 RT: 8.486 min Scan# 911
 Delta R.T. 0.000 min
 Lab File: BM048543.D
 Acq: 08 Nov 2024 23:31

Instrument : BNA_M
 ClientSampleId : SLCS769



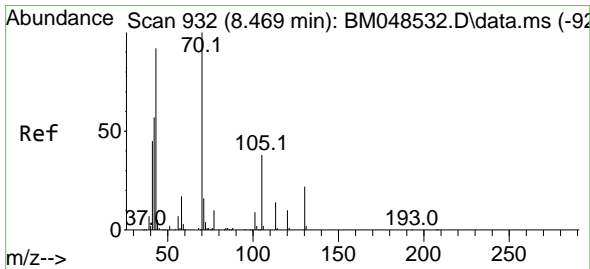
Tgt Ion: 105 Resp: 41744
 Ion Ratio Lower Upper
 105 100
 77 75.4 59.7 89.5
 51 25.9 20.6 31.0

Manual Integrations
APPROVED
 Reviewed By :Yogesh Patel 11/10/2024
 Supervised By :mohammad ahmed 11/11/2024

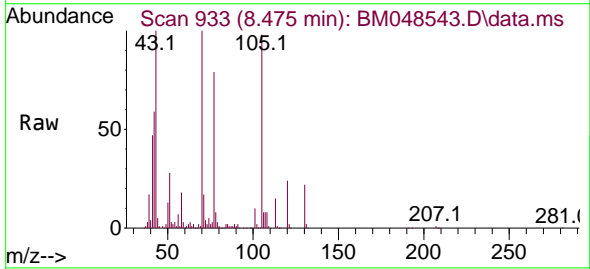


11/10/2024
 Supervised By :mohammad ahmed

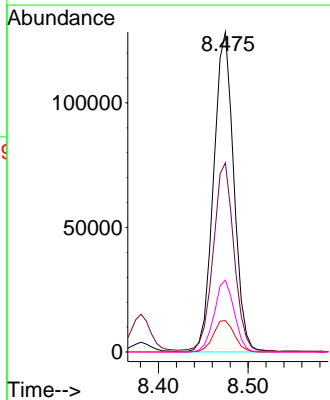
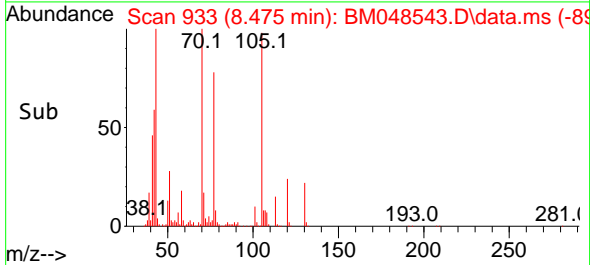
11/11/2024

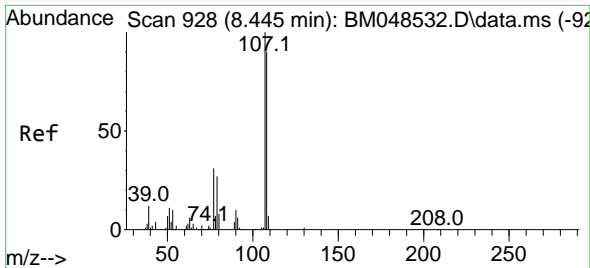


#17
 N-Nitroso-di-n-propylamine
 Concen: 39.099 ng/ul
 RT: 8.475 min Scan# 933
 Delta R.T. 0.000 min
 Lab File: BM048543.D
 Acq: 08 Nov 2024 23:31



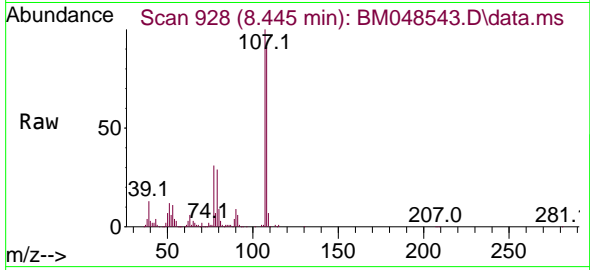
Tgt Ion: 70 Resp: 200599
 Ion Ratio Lower Upper
 70 100
 42 59.1 47.0 70.4
 101 9.8 8.5 12.7
 130 22.5 18.4 27.6





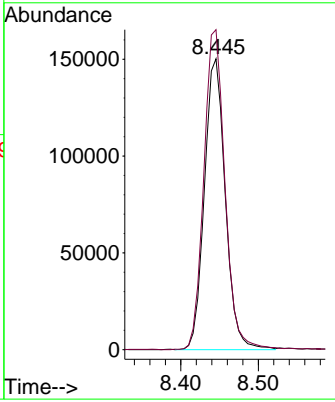
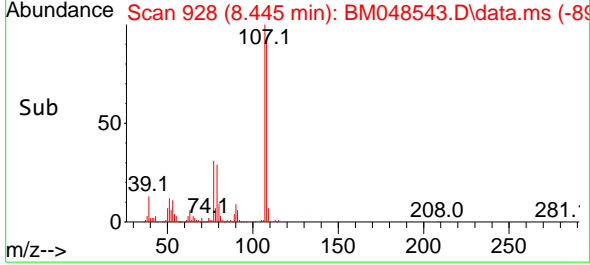
#18
 4-Methylphenol
 Concen: 37.265 ng/u1
 RT: 8.445 min Scan# 918
 Delta R.T. 0.000 min
 Lab File: BM048543.D
 Acq: 08 Nov 2024 23:31

Instrument : BNA_M
 ClientSampleId : SLCS769



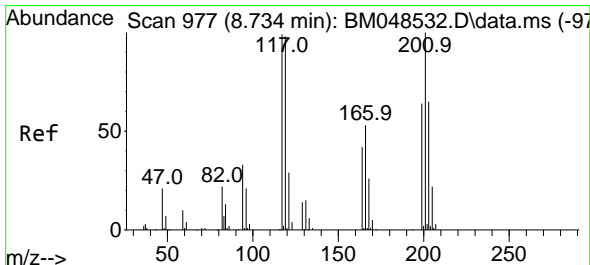
Tgt Ion:108 Resp: 282278
 Ion Ratio Lower Upper
 108 100
 107 110.0 88.8 133.2

Manual Integrations
APPROVED
 Reviewed By :Yogesh Patel 11/10/2024
 Supervised By :mohammad ahmed 11/11/2024

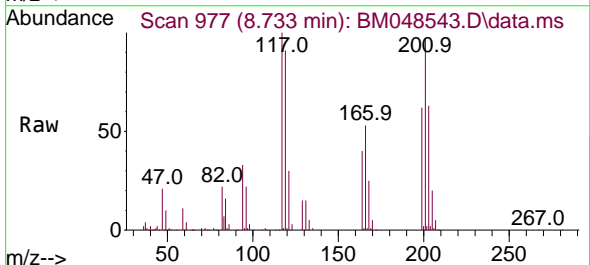


11/10/2024
 Supervised By :mohammad ahmed

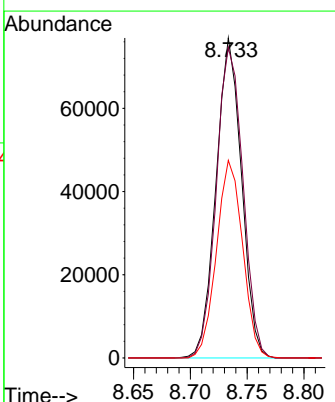
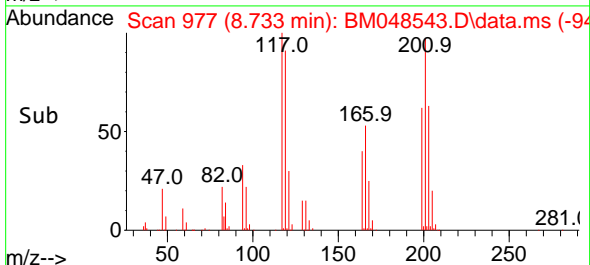
11/11/2024

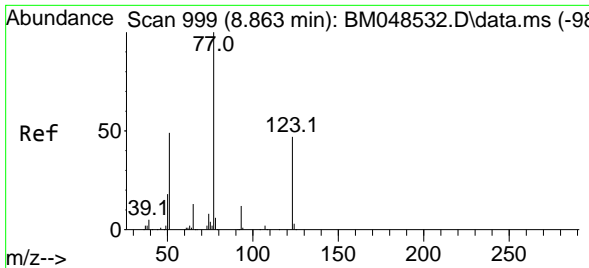


#19
 Hexachloroethane
 Concen: 37.156 ng/u1
 RT: 8.733 min Scan# 977
 Delta R.T. -0.006 min
 Lab File: BM048543.D
 Acq: 08 Nov 2024 23:31



Tgt Ion:117 Resp: 120023
 Ion Ratio Lower Upper
 117 100
 201 97.0 83.8 125.8
 199 61.8 52.1 78.1





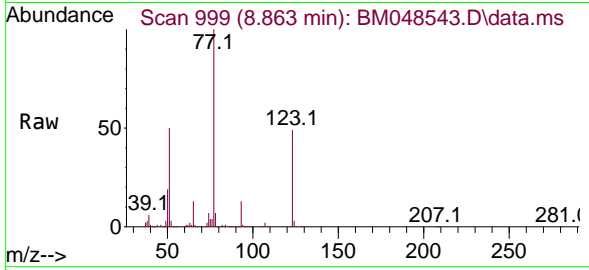
#22
 Nitrobenzene
 Concen: 39.046 ng/u1
 RT: 8.863 min Scan# 999
 Delta R.T. 0.000 min
 Lab File: BM048543.D
 Acq: 08 Nov 2024 23:31

Instrument :

BNA_M

ClientSampleId :

SLCS769



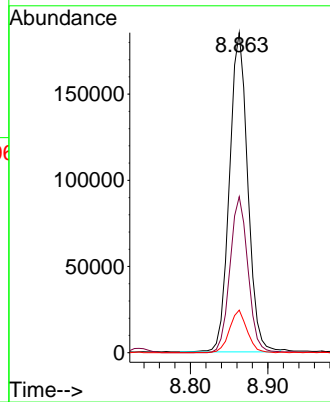
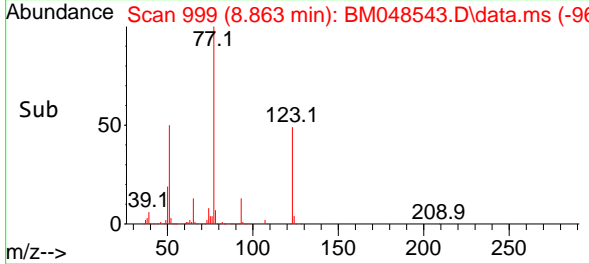
Tgt Ion: 77 Resp: 30403
 Ion Ratio Lower Upper
 77 100
 123 48.7 36.6 55.0
 65 13.3 9.5 14.3

Manual Integrations

APPROVED

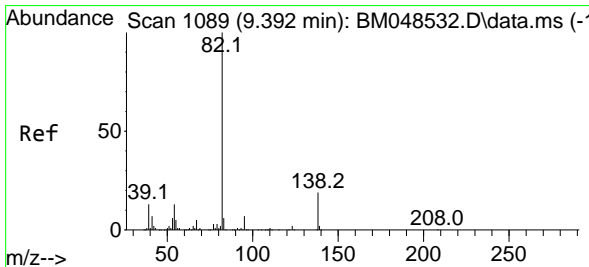
Reviewed By :Yogesh Patel 11/10/2024

Supervised By :mohammad ahmed 11/11/2024

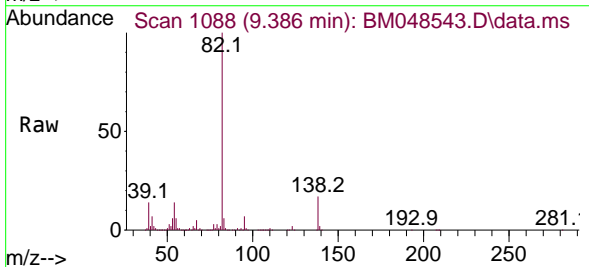


11/10/2024
 Supervised By :mohammad
 ahmed

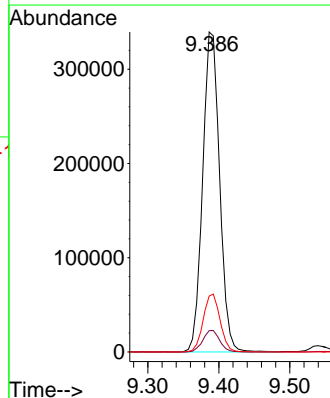
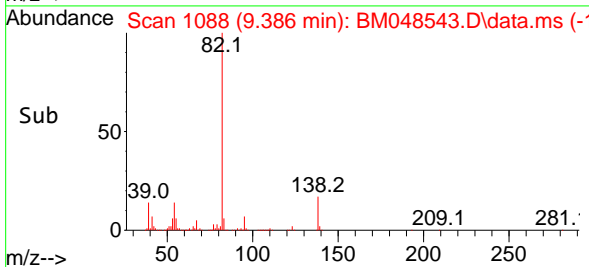
11/11/2024

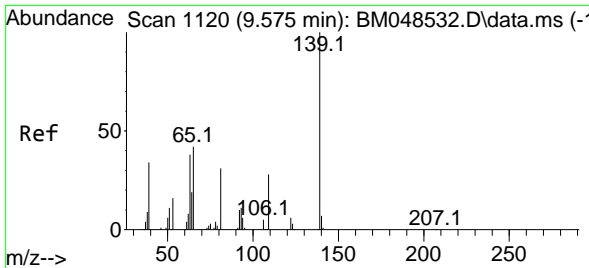


#23
 Isophorone
 Concen: 39.218 ng/u1
 RT: 9.386 min Scan# 1088
 Delta R.T. -0.006 min
 Lab File: BM048543.D
 Acq: 08 Nov 2024 23:31



Tgt Ion: 82 Resp: 564862
 Ion Ratio Lower Upper
 82 100
 95 6.6 5.0 7.6
 138 17.4 14.2 21.4





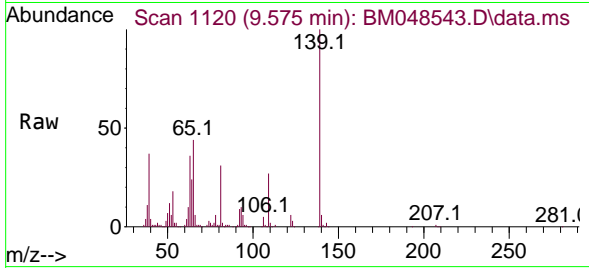
#25
 2-Nitrophenol
 Concen: 39.688 ng/uI
 RT: 9.575 min Scan# 1120
 Delta R.T. 0.000 min
 Lab File: BM048543.D
 Acq: 08 Nov 2024 23:31

Instrument :

BNA_M

ClientSampleId :

SLCS769



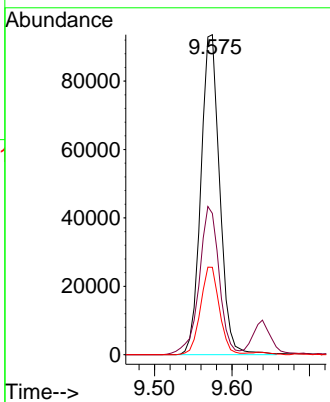
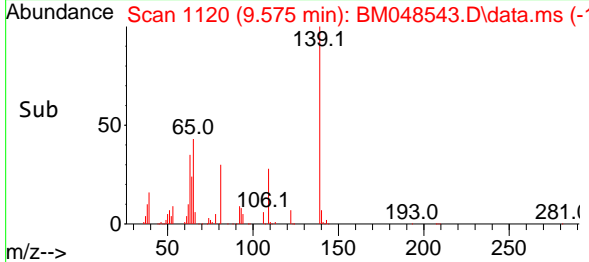
Tgt Ion:139 Resp: 157990
 Ion Ratio Lower Upper
 139 100
 65 44.1 37.7 56.5
 109 27.3 22.3 33.5

Manual Integrations

APPROVED

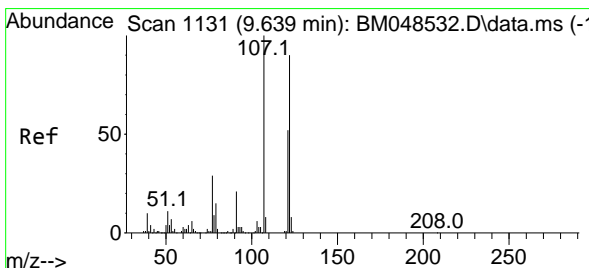
Reviewed By :Yogesh Patel 11/10/2024

Supervised By :mohammad ahmed 11/11/2024

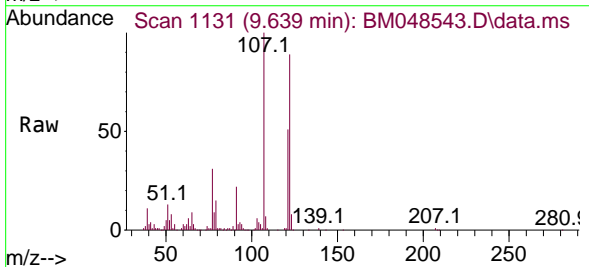


11/10/2024
 Supervised By :mohammad
 ahmed

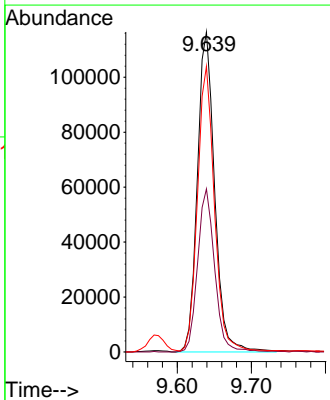
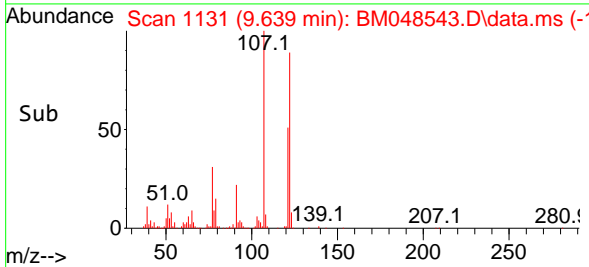
11/11/2024

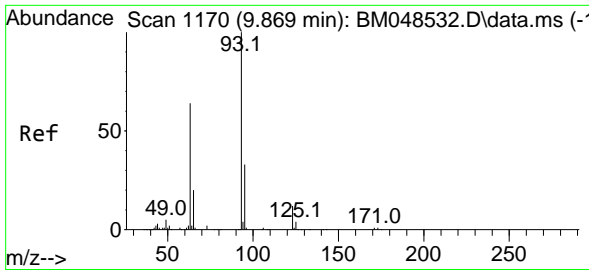


#26
 2,4-Dimethylphenol
 Concen: 25.399 ng/uI
 RT: 9.639 min Scan# 1131
 Delta R.T. 0.000 min
 Lab File: BM048543.D
 Acq: 08 Nov 2024 23:31



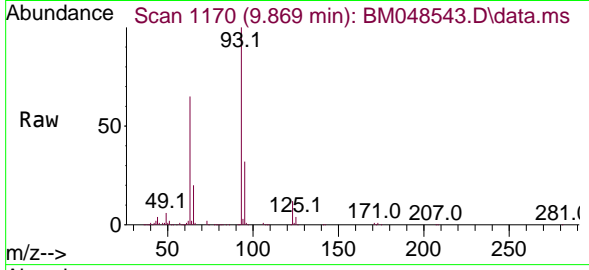
Tgt Ion:107 Resp: 188852
 Ion Ratio Lower Upper
 107 100
 121 50.9 42.9 64.3
 122 89.3 69.8 104.8





#27
 Bis(2-Chloroethoxy)methane
 Concen: 38.631 ng/ul
 RT: 9.869 min Scan# 1170
 Delta R.T. -0.006 min
 Lab File: BM048543.D
 Acq: 08 Nov 2024 23:31

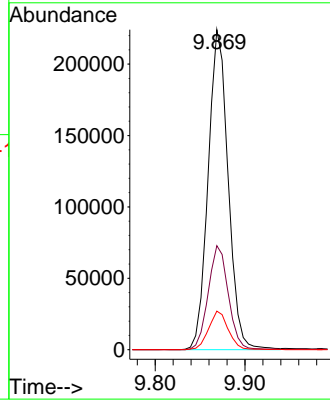
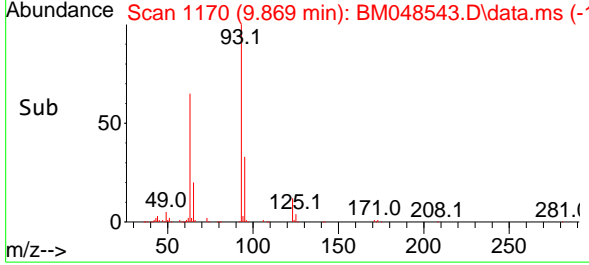
Instrument :
 BNA_M
 ClientSampleId :
 SLCS769



Tgt Ion: 93 Resp: 347300
 Ion Ratio Lower Upper
 93 100
 95 32.5 25.3 37.9
 123 12.1 9.5 14.3

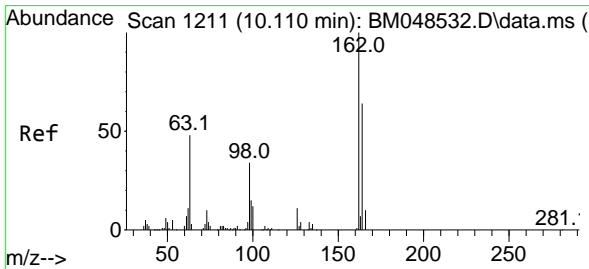
Manual Integrations
 APPROVED

Reviewed By :Yogesh Patel 11/10/2024
 Supervised By :mohammad ahmed 11/11/2024

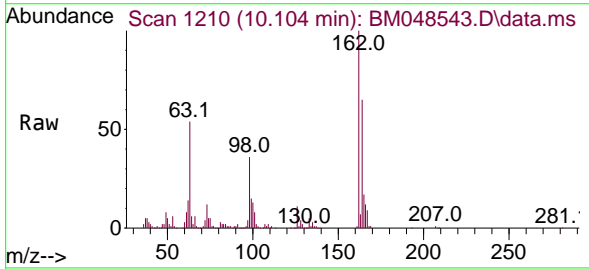


11/10/2024
 Supervised By :mohammad
 ahmed

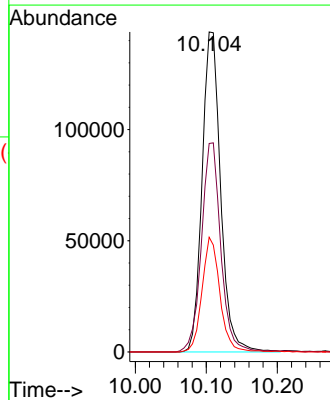
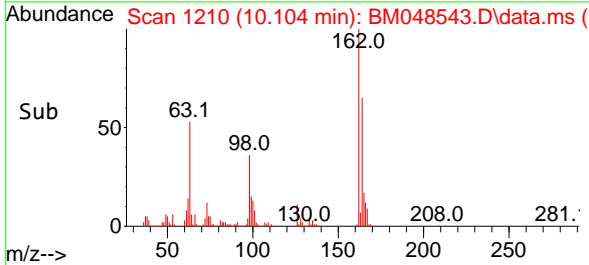
11/11/2024

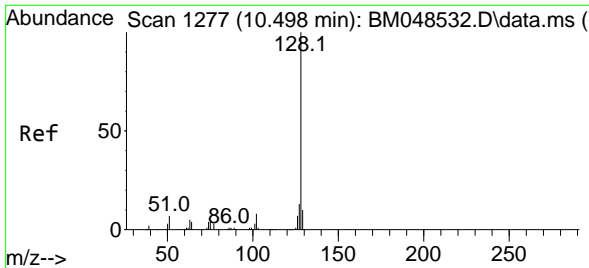


#29
 2,4-Dichlorophenol
 Concen: 38.082 ng/ul
 RT: 10.104 min Scan# 1210
 Delta R.T. -0.006 min
 Lab File: BM048543.D
 Acq: 08 Nov 2024 23:31



Tgt Ion:162 Resp: 262123
 Ion Ratio Lower Upper
 162 100
 164 65.1 54.6 82.0
 98 35.8 28.2 42.2





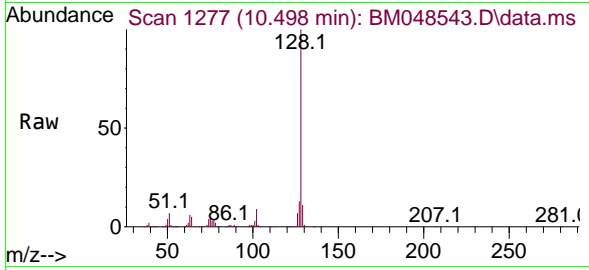
#30
 Naphthalene
 Concen: 37.694 ng/u1
 RT: 10.498 min Scan# 1277
 Delta R.T. -0.006 min
 Lab File: BM048543.D
 Acq: 08 Nov 2024 23:31

Instrument :

BNA_M

ClientSampleId :

SLCS769



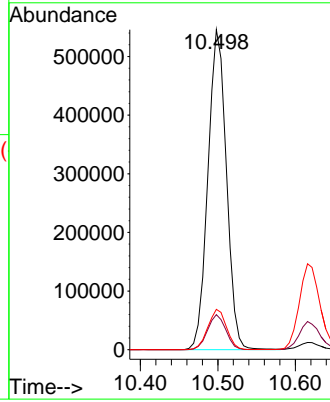
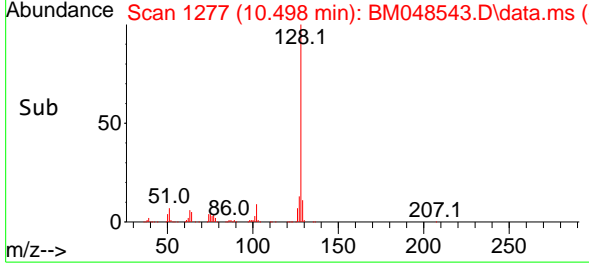
Tgt Ion:128 Resp: 90397
 Ion Ratio Lower Upper
 128 100
 129 11.0 8.5 12.7
 127 12.6 10.0 15.0

Manual Integrations

APPROVED

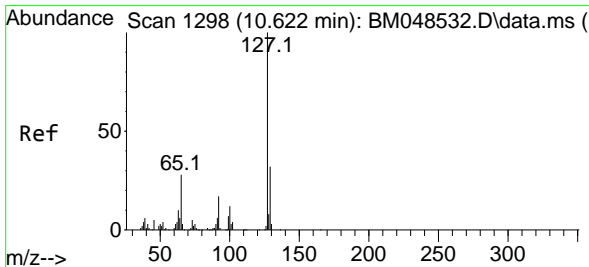
Reviewed By :Yogesh Patel 11/10/2024

Supervised By :mohammad ahmed 11/11/2024



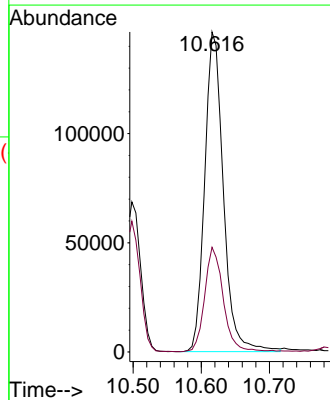
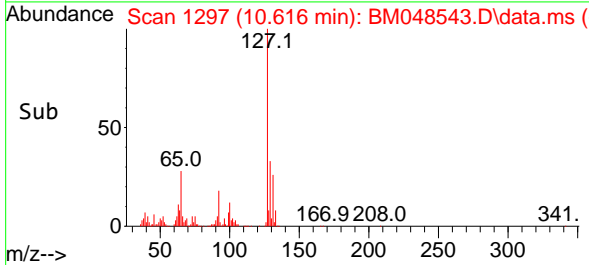
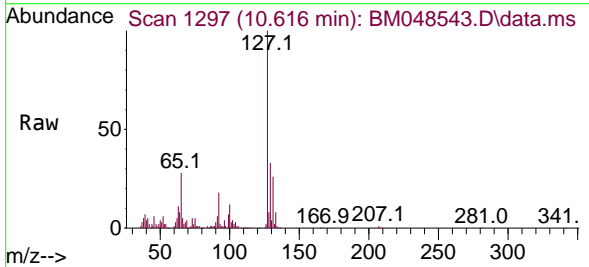
11/10/2024
 Supervised By :mohammad
 ahmed

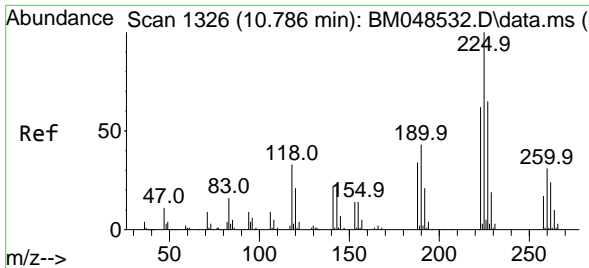
11/11/2024



#32
 4-Chloroaniline
 Concen: 30.678 ng/u1
 RT: 10.616 min Scan# 1297
 Delta R.T. -0.006 min
 Lab File: BM048543.D
 Acq: 08 Nov 2024 23:31

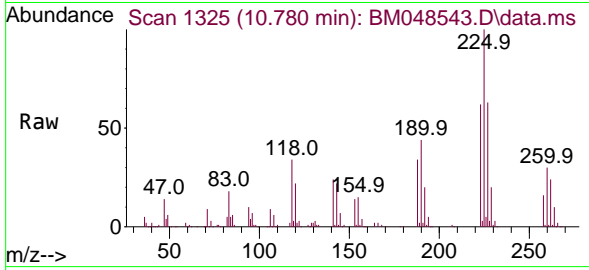
Tgt Ion:127 Resp: 278802
 Ion Ratio Lower Upper
 127 100
 129 32.7 26.2 39.4





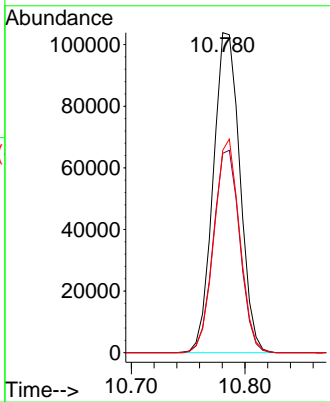
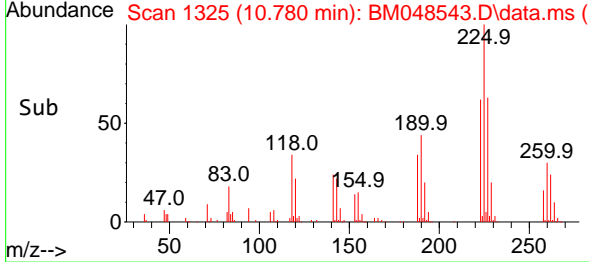
#33
 Hexachlorobutadiene
 Concen: 36.391 ng/uI
 RT: 10.780 min Scan# 1325
 Delta R.T. -0.006 min
 Lab File: BM048543.D
 Acq: 08 Nov 2024 23:31

Instrument : BNA_M
 ClientSampleId : SLCS769



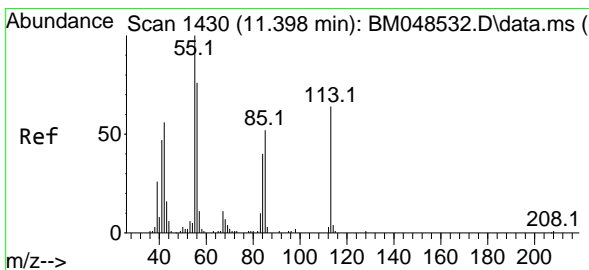
Tgt Ion:225 Resp: 169500
 Ion Ratio Lower Upper
 225 100
 223 62.3 48.5 72.7
 227 63.2 51.5 77.3

Manual Integrations
APPROVED
 Reviewed By :Yogesh Patel 11/10/2024
 Supervised By :mohammad ahmed 11/11/2024



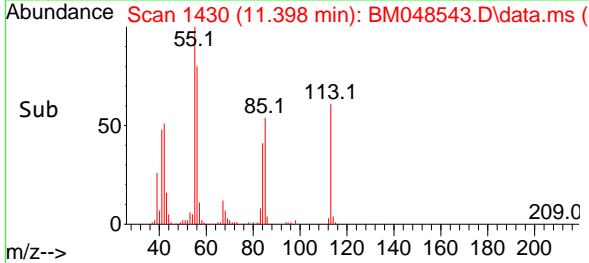
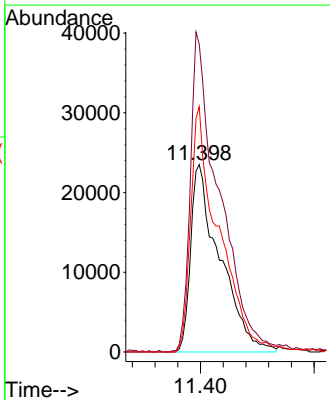
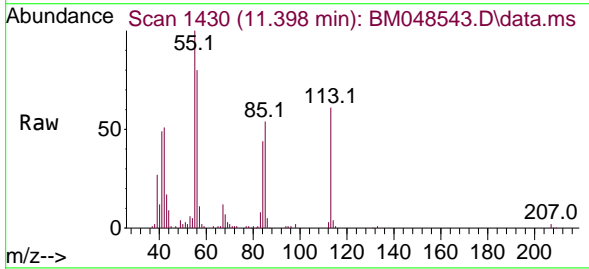
11/10/2024
 Supervised By :mohammad ahmed

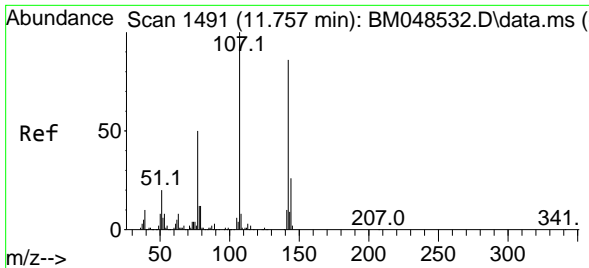
11/11/2024



#34
 Caprolactam
 Concen: 38.744 ng/uI
 RT: 11.398 min Scan# 1430
 Delta R.T. 0.000 min
 Lab File: BM048543.D
 Acq: 08 Nov 2024 23:31

Tgt Ion:113 Resp: 84050
 Ion Ratio Lower Upper
 113 100
 55 164.2 138.5 207.7
 56 130.9 104.1 156.1





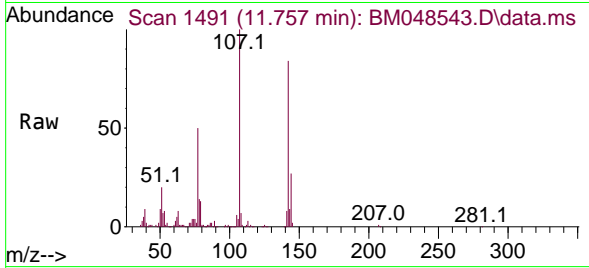
#35
 4-Chloro-3-methylphenol
 Concen: 39.937 ng/ul
 RT: 11.757 min Scan# 1491
 Delta R.T. 0.000 min
 Lab File: BM048543.D
 Acq: 08 Nov 2024 23:31

Instrument :

BNA_M

ClientSampleId :

SLCS769



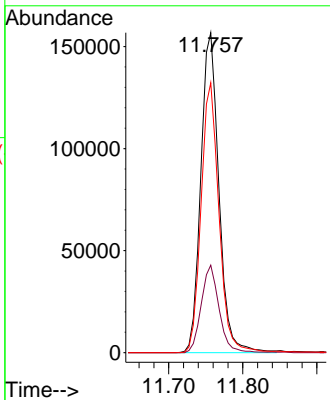
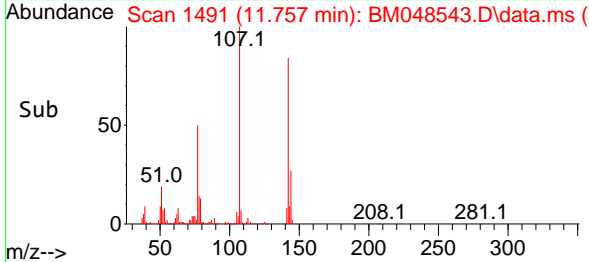
Tgt Ion:107 Resp: 265998
 Ion Ratio Lower Upper
 107 100
 144 27.4 20.6 31.0
 142 84.4 66.7 100.1

Manual Integrations

APPROVED

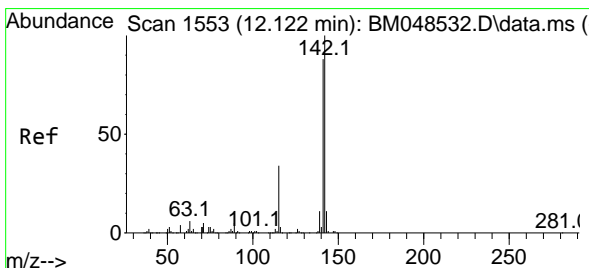
Reviewed By :Yogesh Patel 11/10/2024

Supervised By :mohammad ahmed 11/11/2024

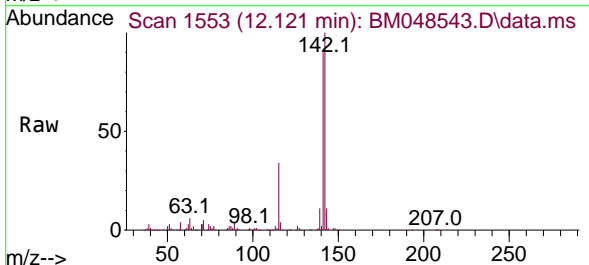


11/10/2024
 Supervised By :mohammad
 ahmed

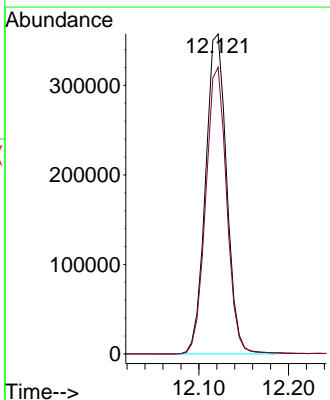
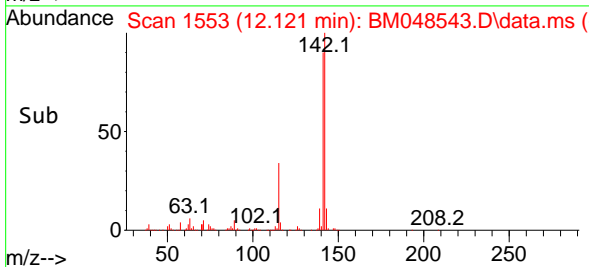
11/11/2024

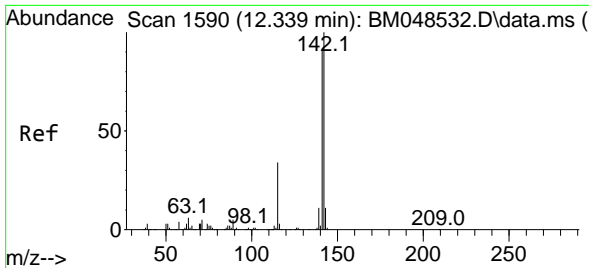


#36
 2-Methylnaphthalene
 Concen: 38.122 ng/ul
 RT: 12.121 min Scan# 1553
 Delta R.T. 0.000 min
 Lab File: BM048543.D
 Acq: 08 Nov 2024 23:31



Tgt Ion:142 Resp: 584980
 Ion Ratio Lower Upper
 142 100
 141 89.6 71.6 107.4





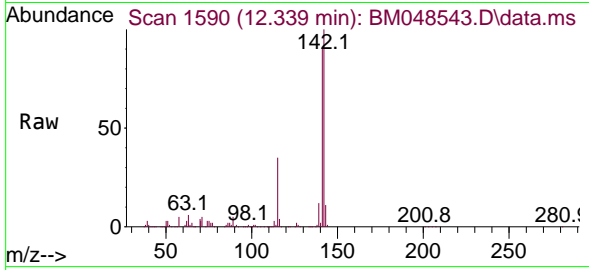
#37
 1-Methylnaphthalene
 Concen: 37.028 ng/uI
 RT: 12.339 min Scan# 1590
 Delta R.T. -0.006 min
 Lab File: BM048543.D
 Acq: 08 Nov 2024 23:31

Instrument :

BNA_M

ClientSampleId :

SLCS769



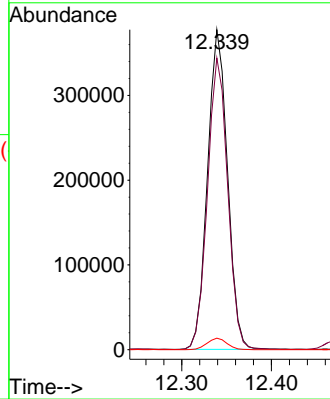
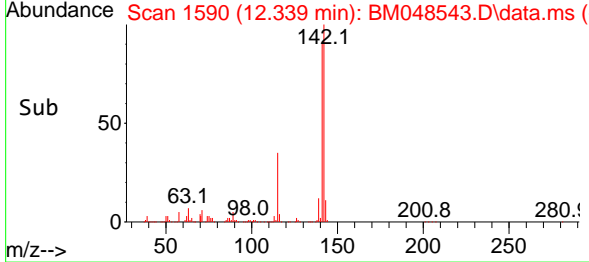
Tgt Ion:142 Resp: 58309
 Ion Ratio Lower Upper
 142 100
 141 91.2 73.6 110.4
 116 3.6 2.7 4.1

Manual Integrations

APPROVED

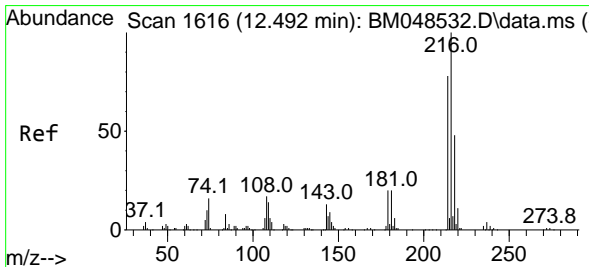
Reviewed By :Yogesh Patel 11/10/2024

Supervised By :mohammad ahmed 11/11/2024

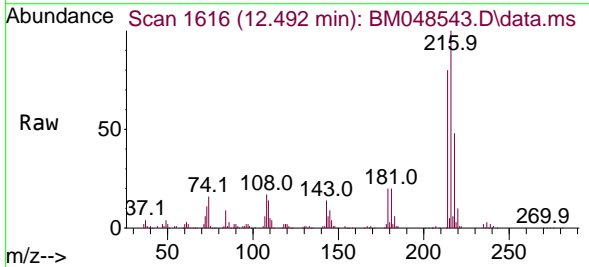


11/10/2024
 Supervised By :mohammad
 ahmed

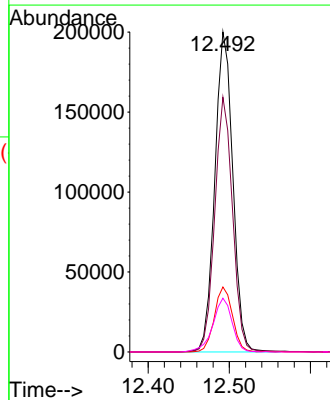
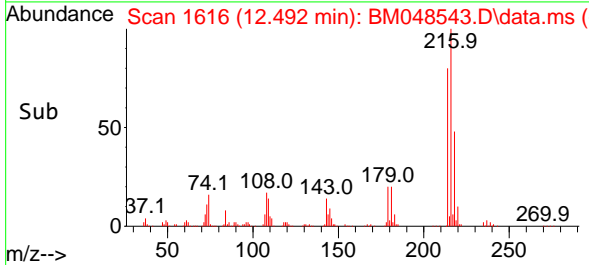
11/11/2024

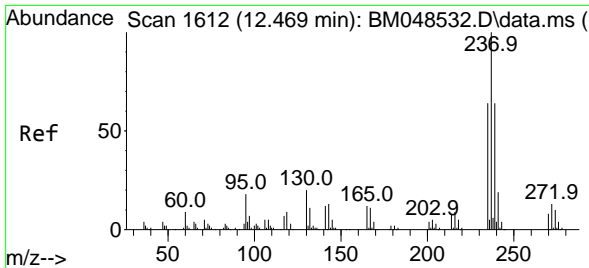


#39
 1,2,4,5-Tetrachlorobenzene
 Concen: 36.902 ng/uI
 RT: 12.492 min Scan# 1616
 Delta R.T. -0.006 min
 Lab File: BM048543.D
 Acq: 08 Nov 2024 23:31



Tgt Ion:216 Resp: 309057
 Ion Ratio Lower Upper
 216 100
 214 79.6 62.6 93.8
 179 20.3 16.5 24.7
 108 16.8 12.9 19.3





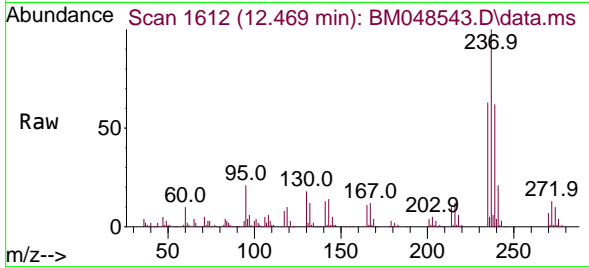
#40
 Hexachlorocyclopentadiene
 Concen: 28.014 ng/ul
 RT: 12.469 min Scan# 1612
 Delta R.T. -0.006 min
 Lab File: BM048543.D
 Acq: 08 Nov 2024 23:31

Instrument :

BNA_M

ClientSampleId :

SLCS769



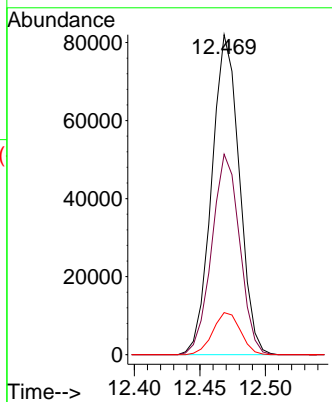
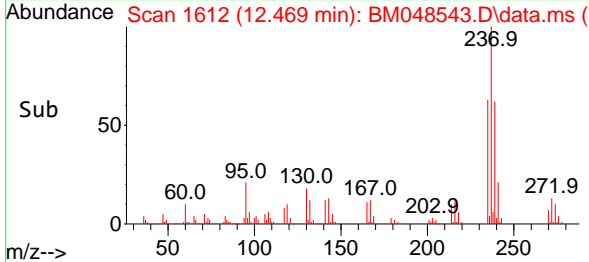
Tgt Ion:237 Resp: 119924
 Ion Ratio Lower Upper
 237 100
 235 62.7 50.0 75.0
 272 13.2 10.6 16.0

Manual Integrations

APPROVED

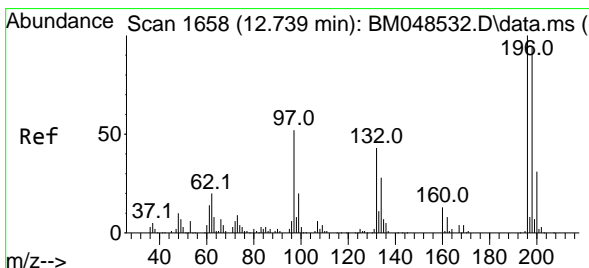
Reviewed By :Yogesh Patel 11/10/2024

Supervised By :mohammad ahmed 11/11/2024

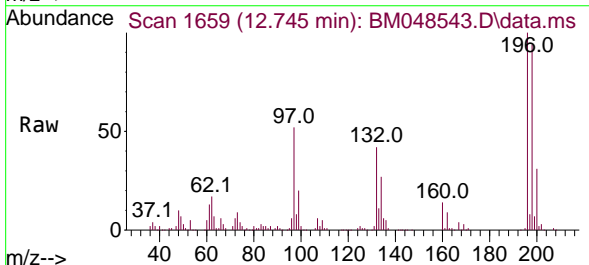


11/10/2024
 Supervised By :mohammad
 ahmed

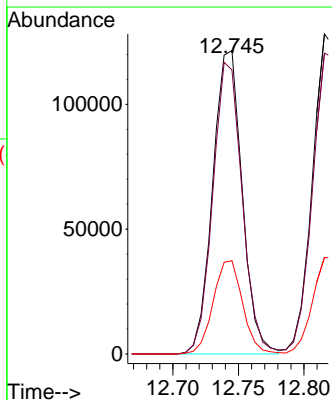
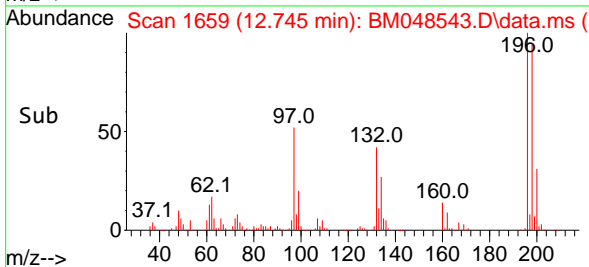
11/11/2024

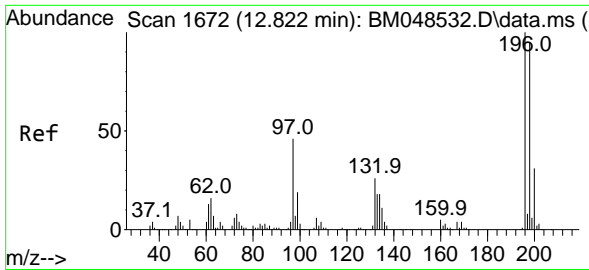


#41
 2,4,6-Trichlorophenol
 Concen: 35.879 ng/ul
 RT: 12.745 min Scan# 1659
 Delta R.T. 0.000 min
 Lab File: BM048543.D
 Acq: 08 Nov 2024 23:31



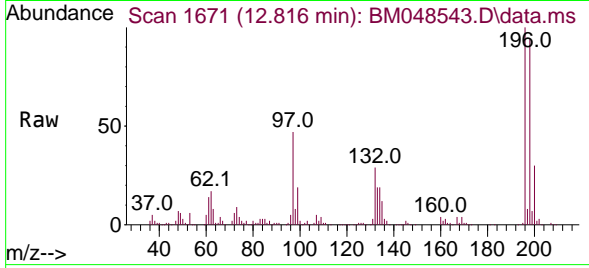
Tgt Ion:196 Resp: 189807
 Ion Ratio Lower Upper
 196 100
 198 93.6 76.6 114.8
 200 30.8 25.8 38.6





#42
 2,4,5-Trichlorophenol
 Concen: 37.421 ng/ul
 RT: 12.816 min Scan# 1671
 Delta R.T. -0.006 min
 Lab File: BM048543.D
 Acq: 08 Nov 2024 23:31

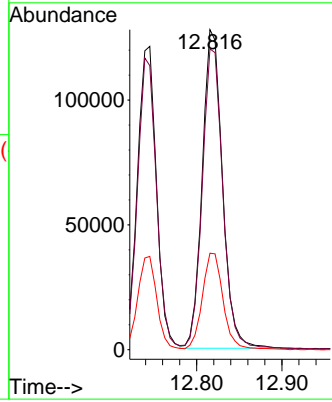
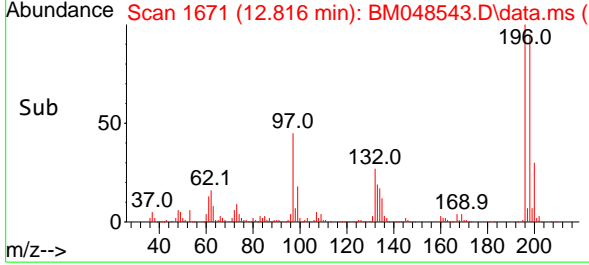
Instrument : BNA_M
 ClientSampleId : SLCS769



Tgt Ion:196 Resp: 210819
 Ion Ratio Lower Upper
 196 100
 198 94.0 78.7 118.1
 200 30.1 24.6 37.0

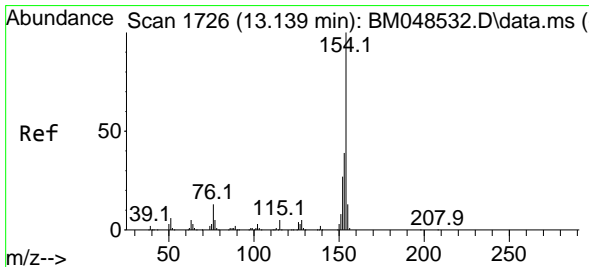
Manual Integrations
 APPROVED

Reviewed By :Yogesh Patel 11/10/2024
 Supervised By :mohammad ahmed 11/11/2024

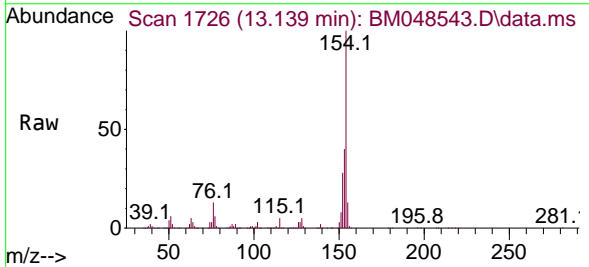


11/10/2024
 Supervised By :mohammad ahmed

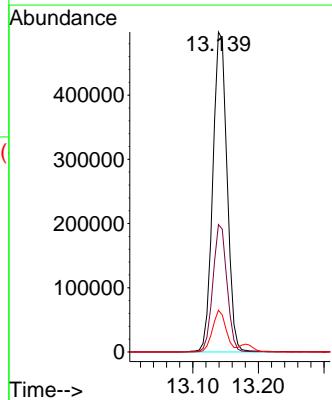
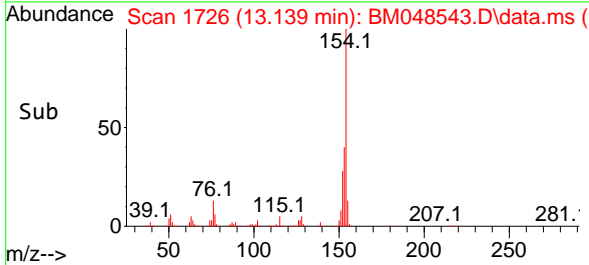
11/11/2024

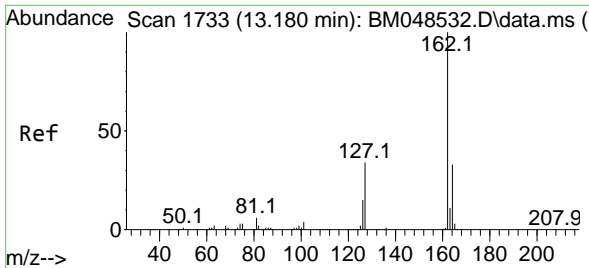


#43
 1,1'-Biphenyl
 Concen: 37.723 ng/ul
 RT: 13.139 min Scan# 1726
 Delta R.T. -0.006 min
 Lab File: BM048543.D
 Acq: 08 Nov 2024 23:31



Tgt Ion:154 Resp: 753844
 Ion Ratio Lower Upper
 154 100
 153 39.8 31.4 47.2
 76 13.1 9.9 14.9





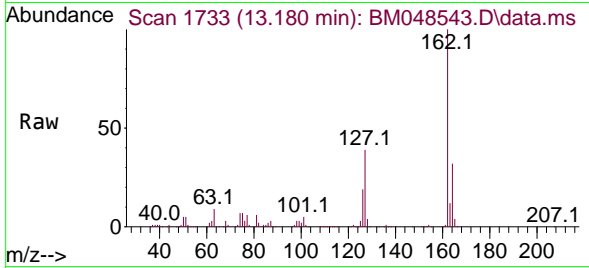
#44
 2-Chloronaphthalene
 Concen: 38.013 ng/ul
 RT: 13.180 min Scan# 1733
 Delta R.T. -0.006 min
 Lab File: BM048543.D
 Acq: 08 Nov 2024 23:31

Instrument :

BNA_M

ClientSampleId :

SLCS769



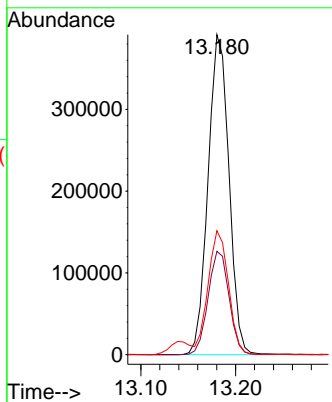
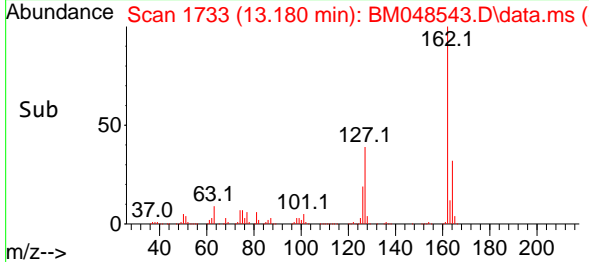
Tgt Ion:162 Resp: 599440
 Ion Ratio Lower Upper
 162 100
 164 32.3 25.8 38.6
 127 38.8 29.5 44.3

Manual Integrations

APPROVED

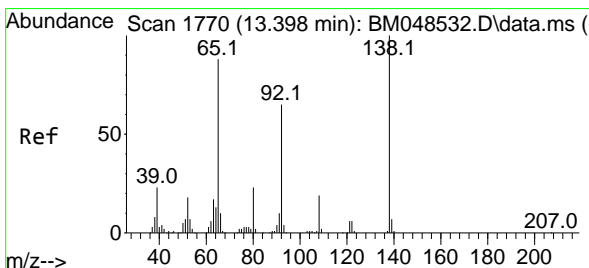
Reviewed By :Yogesh Patel 11/10/2024

Supervised By :mohammad ahmed 11/11/2024

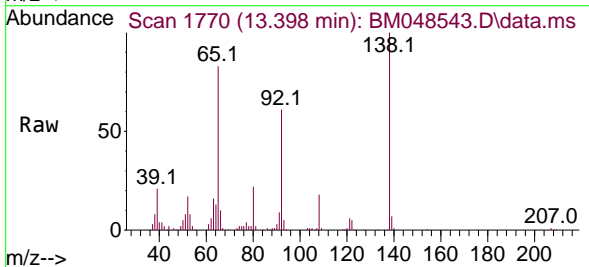


11/10/2024
 Supervised By :mohammad
 ahmed

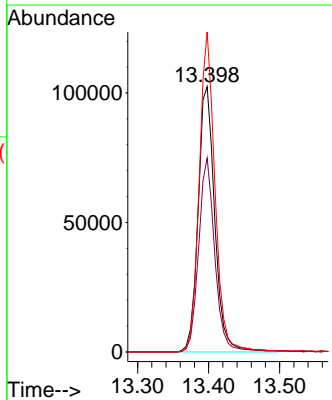
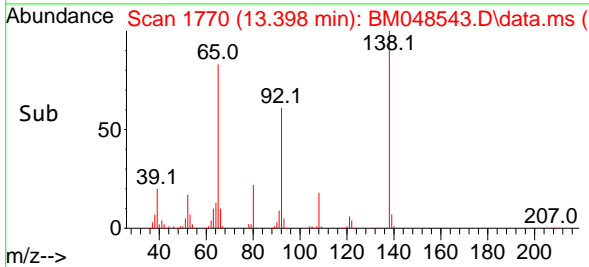
11/11/2024

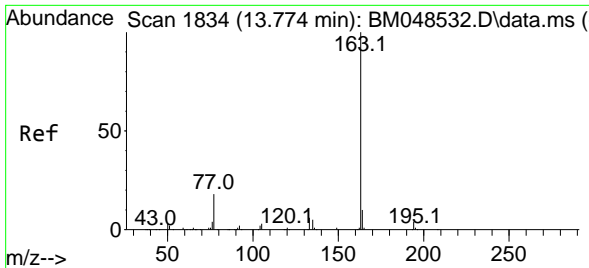


#45
 2-Nitroaniline
 Concen: 42.286 ng/ul
 RT: 13.398 min Scan# 1770
 Delta R.T. 0.000 min
 Lab File: BM048543.D
 Acq: 08 Nov 2024 23:31



Tgt Ion: 65 Resp: 167458
 Ion Ratio Lower Upper
 65 100
 92 73.1 56.2 84.2
 138 120.7 89.6 134.4





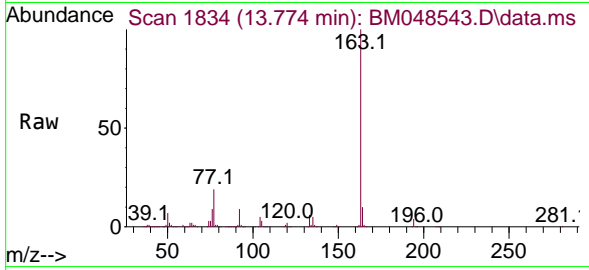
#47
 Dimethylphthalate
 Concen: 40.760 ng/ul
 RT: 13.774 min Scan# 1834
 Delta R.T. 0.000 min
 Lab File: BM048543.D
 Acq: 08 Nov 2024 23:31

Instrument :

BNA_M

ClientSampleId :

SLCS769



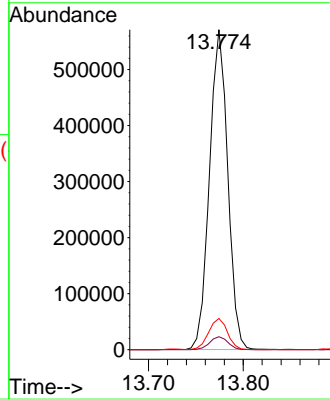
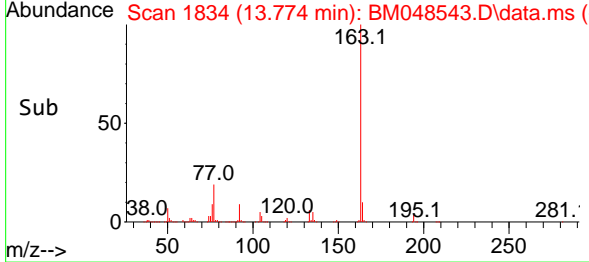
Tgt Ion:163 Resp: 763860
 Ion Ratio Lower Upper
 163 100
 194 4.0 3.0 4.4
 164 9.7 7.9 11.9

Manual Integrations

APPROVED

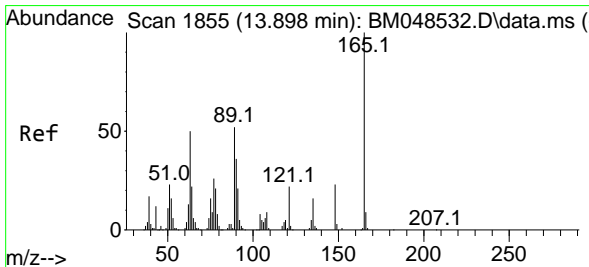
Reviewed By :Yogesh Patel 11/10/2024

Supervised By :mohammad ahmed 11/11/2024

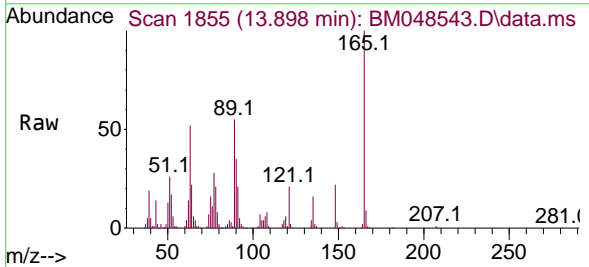


11/10/2024
 Supervised By :mohammad
 ahmed

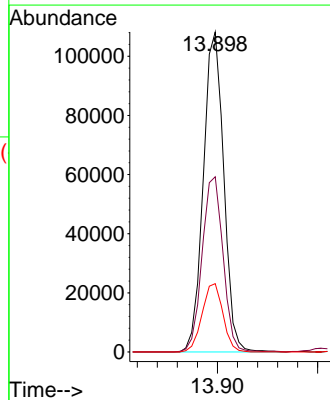
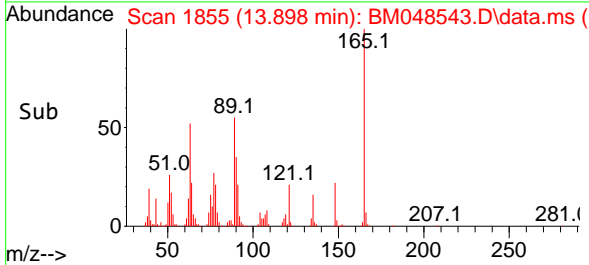
11/11/2024

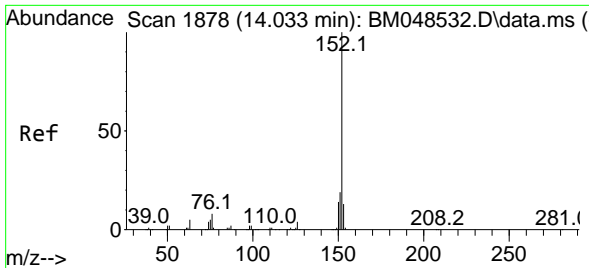


#48
 2,6-Dinitrotoluene
 Concen: 42.884 ng/ul
 RT: 13.898 min Scan# 1855
 Delta R.T. 0.000 min
 Lab File: BM048543.D
 Acq: 08 Nov 2024 23:31



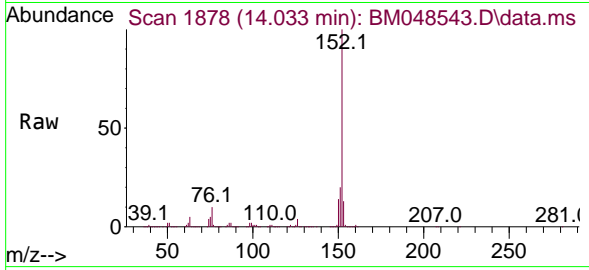
Tgt Ion:165 Resp: 153209
 Ion Ratio Lower Upper
 165 100
 89 54.7 45.4 68.0
 121 21.3 17.1 25.7





#50
 Acenaphthylene
 Concen: 40.799 ng/ul
 RT: 14.033 min Scan# 1878
 Delta R.T. 0.000 min
 Lab File: BM048543.D
 Acq: 08 Nov 2024 23:31

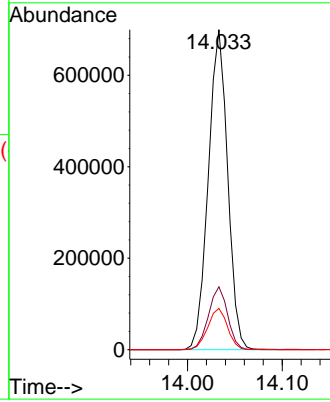
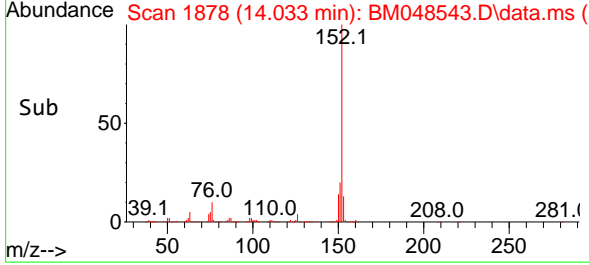
Instrument :
 BNA_M
 ClientSampleId :
 SLCS769



Tgt Ion:152 Resp: 98919
 Ion Ratio Lower Upper
 152 100
 151 19.7 15.8 23.6
 153 12.9 10.5 15.7

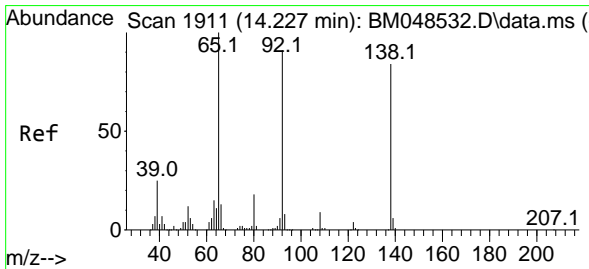
Manual Integrations
 APPROVED

Reviewed By :Yogesh Patel 11/10/2024
 Supervised By :mohammad ahmed 11/11/2024

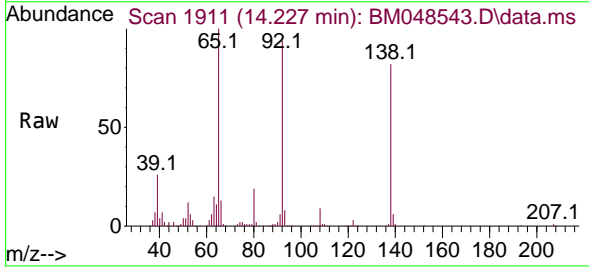


11/10/2024
 Supervised By :mohammad
 ahmed

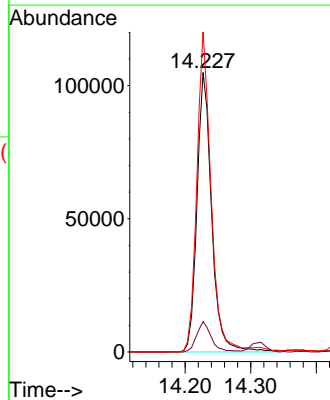
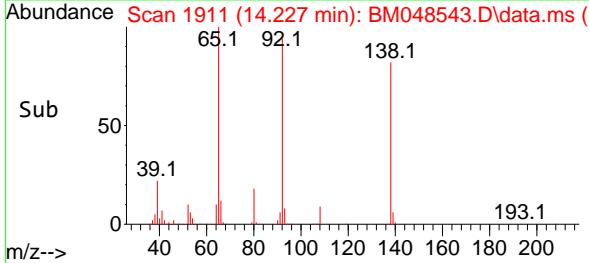
11/11/2024

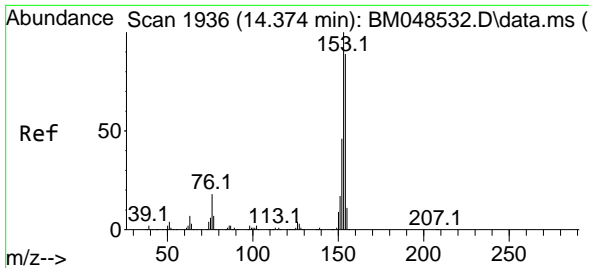


#51
 3-Nitroaniline
 Concen: 42.123 ng/ul
 RT: 14.227 min Scan# 1911
 Delta R.T. -0.006 min
 Lab File: BM048543.D
 Acq: 08 Nov 2024 23:31



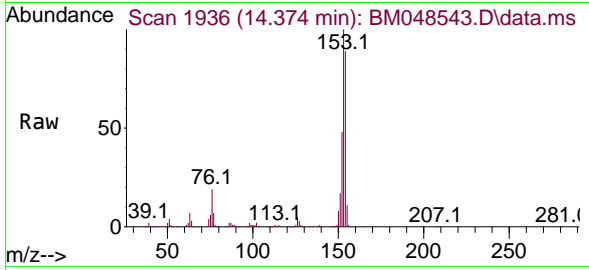
Tgt Ion:138 Resp: 163426
 Ion Ratio Lower Upper
 138 100
 108 10.9 7.8 11.8
 92 114.5 91.0 136.4





#52
 Acenaphthene
 Concen: 38.649 ng/u1
 RT: 14.374 min Scan# 1936
 Delta R.T. -0.006 min
 Lab File: BM048543.D
 Acq: 08 Nov 2024 23:31

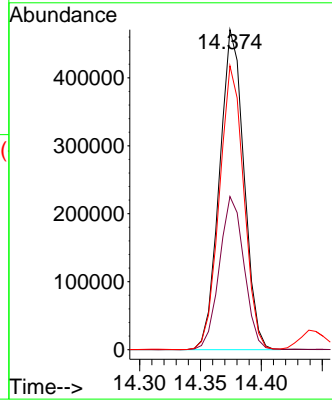
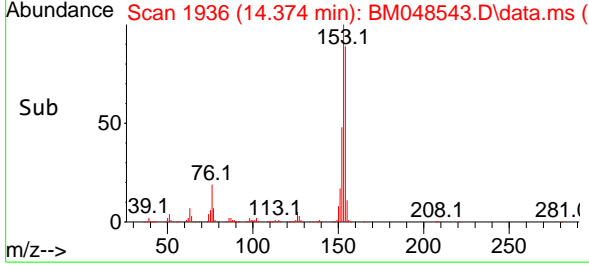
Instrument :
 BNA_M
 ClientSampleId :
 SLCS769



Tgt Ion:153 Resp: 65970
 Ion Ratio Lower Upper
 153 100
 152 47.9 38.3 57.5
 154 88.7 71.1 106.7

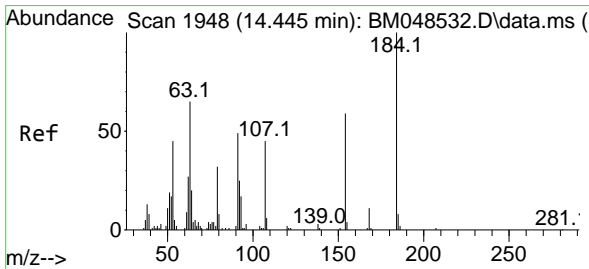
Manual Integrations
 APPROVED

Reviewed By :Yogesh Patel 11/10/2024
 Supervised By :mohammad ahmed 11/11/2024

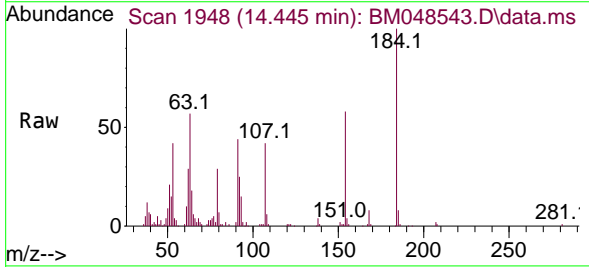


11/10/2024
 Supervised By :mohammad
 ahmed

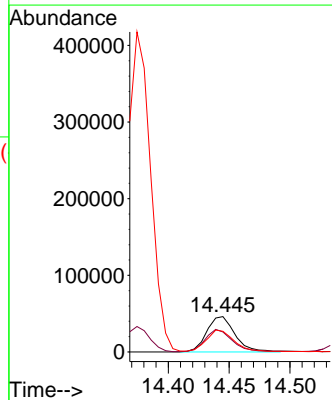
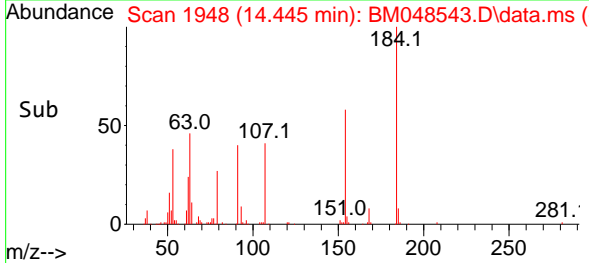
11/11/2024

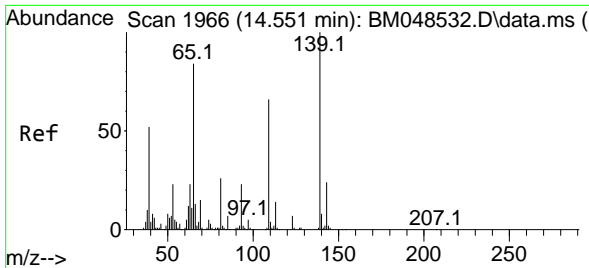


#53
 2,4-Dinitrophenol
 Concen: 38.863 ng/u1
 RT: 14.445 min Scan# 1948
 Delta R.T. 0.000 min
 Lab File: BM048543.D
 Acq: 08 Nov 2024 23:31



Tgt Ion:184 Resp: 74653
 Ion Ratio Lower Upper
 184 100
 63 56.9 52.5 78.7
 154 58.3 51.4 77.0





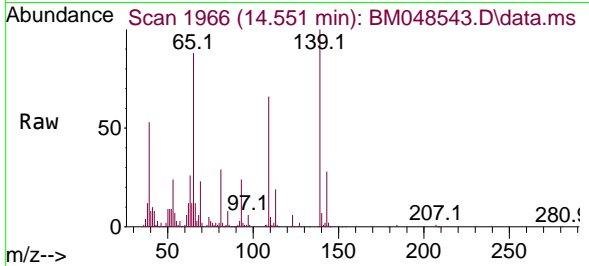
#55
 4-Nitrophenol
 Concen: 40.504 ng/u1
 RT: 14.551 min Scan# 1966
 Delta R.T. 0.000 min
 Lab File: BM048543.D
 Acq: 08 Nov 2024 23:31

Instrument :

BNA_M

ClientSampleId :

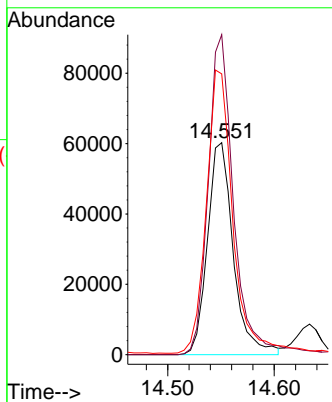
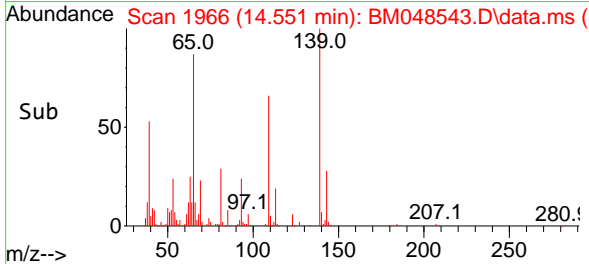
SLCS769



Tgt Ion:109 Resp: 101469
 Ion Ratio Lower Upper
 109 100
 139 150.9 115.9 173.9
 65 132.4 107.0 160.4

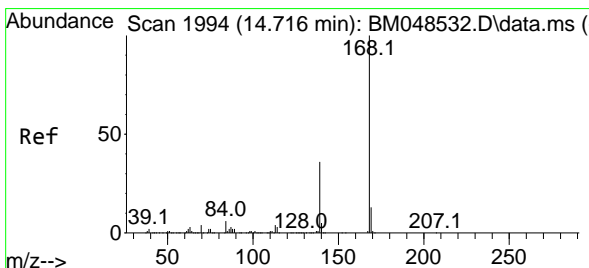
Manual Integrations
 APPROVED

Reviewed By :Yogesh Patel 11/10/2024
 Supervised By :mohammad ahmed 11/11/2024

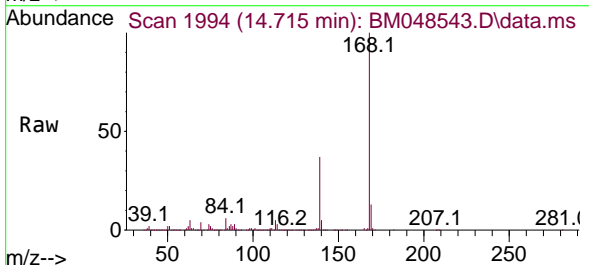


11/10/2024
 Supervised By :mohammad
 ahmed

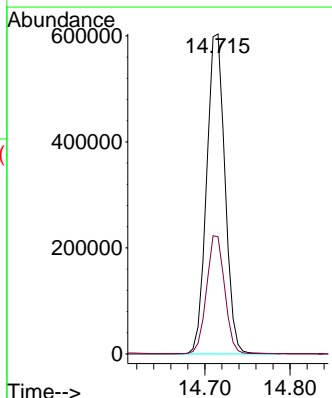
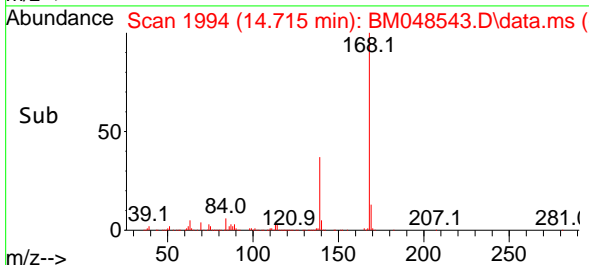
11/11/2024

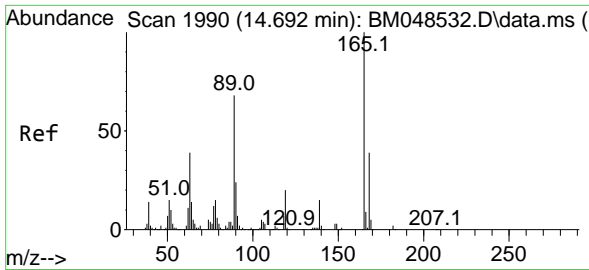


#56
 Dibenzofuran
 Concen: 38.295 ng/u1
 RT: 14.715 min Scan# 1994
 Delta R.T. 0.000 min
 Lab File: BM048543.D
 Acq: 08 Nov 2024 23:31



Tgt Ion:168 Resp: 901753
 Ion Ratio Lower Upper
 168 100
 139 36.6 29.7 44.5





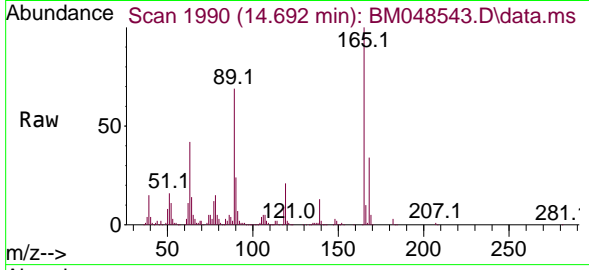
#57
 2,4-Dinitrotoluene
 Concen: 41.854 ng/ul
 RT: 14.692 min Scan# 1990
 Delta R.T. 0.000 min
 Lab File: BM048543.D
 Acq: 08 Nov 2024 23:31

Instrument :

BNA_M

ClientSampleId :

SLCS769



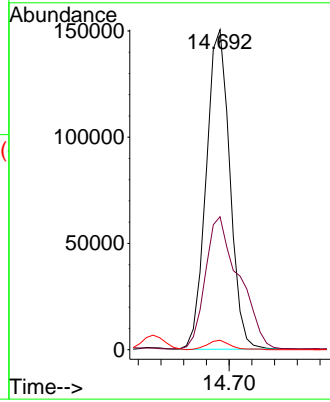
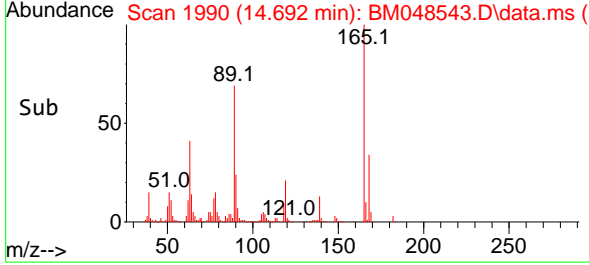
Tgt Ion:165 Resp: 21735
 Ion Ratio Lower Upper
 165 100
 63 41.5 34.6 51.8
 182 2.9 2.4 3.6

Manual Integrations

APPROVED

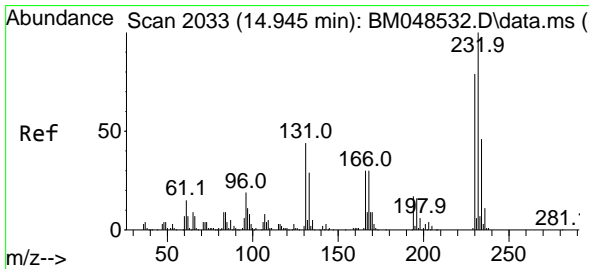
Reviewed By :Yogesh Patel 11/10/2024

Supervised By :mohammad ahmed 11/11/2024

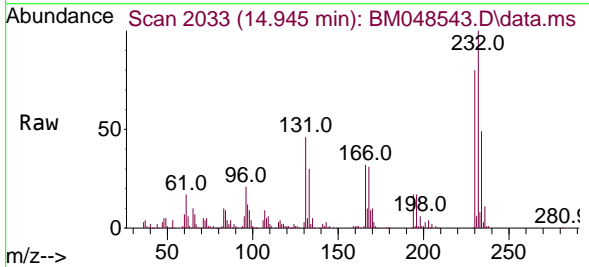


11/10/2024
 Supervised By :mohammad
 ahmed

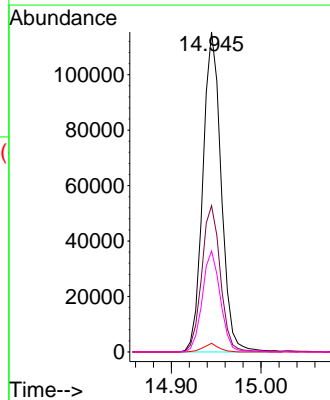
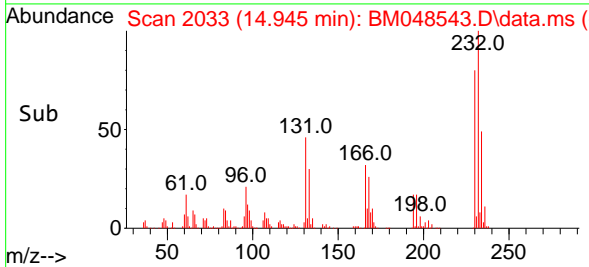
11/11/2024

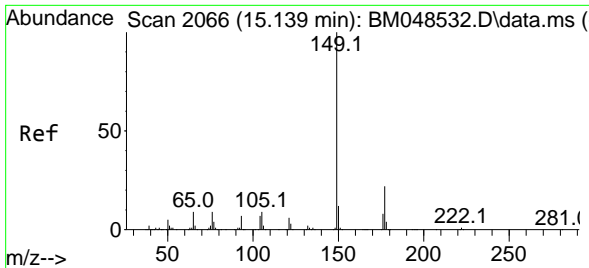


#58
 2,3,4,6-Tetrachlorophenol
 Concen: 34.979 ng/ul
 RT: 14.945 min Scan# 2033
 Delta R.T. 0.000 min
 Lab File: BM048543.D
 Acq: 08 Nov 2024 23:31



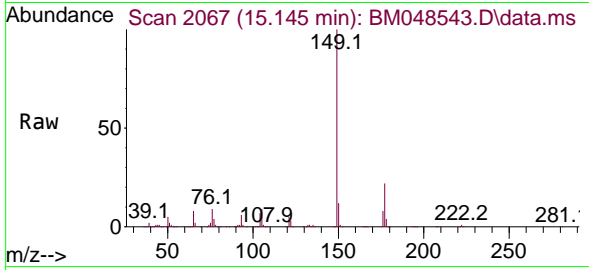
Tgt Ion:232 Resp: 163921
 Ion Ratio Lower Upper
 232 100
 131 45.7 36.3 54.5
 130 2.7 1.8 2.8
 166 31.5 24.2 36.2





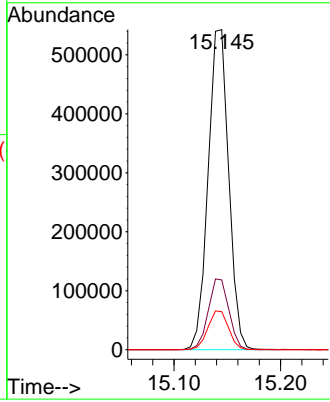
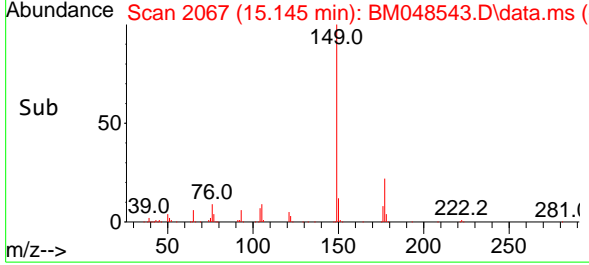
#59
 Diethylphthalate
 Concen: 39.484 ng/u1
 RT: 15.145 min Scan# 2067
 Delta R.T. 0.000 min
 Lab File: BM048543.D
 Acq: 08 Nov 2024 23:31

Instrument : BNA_M
 ClientSampleId : SLCS769



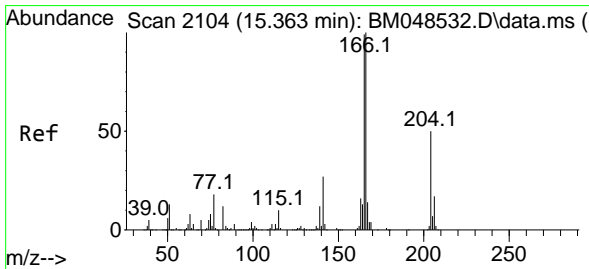
Tgt Ion:149 Resp: 72903
 Ion Ratio Lower Upper
 149 100
 177 21.8 17.8 26.8
 150 11.9 9.6 14.4

Manual Integrations
APPROVED
 Reviewed By :Yogesh Patel 11/10/2024
 Supervised By :mohammad ahmed 11/11/2024

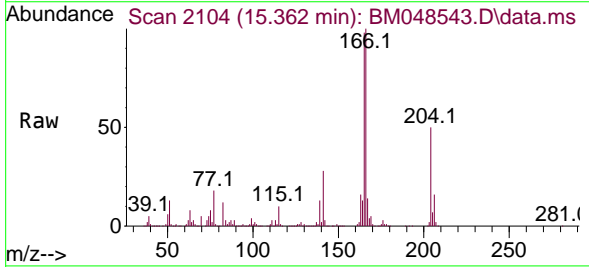


11/10/2024
 Supervised By :mohammad ahmed

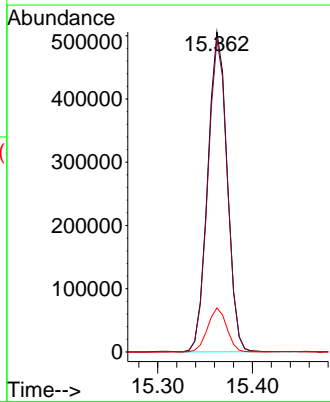
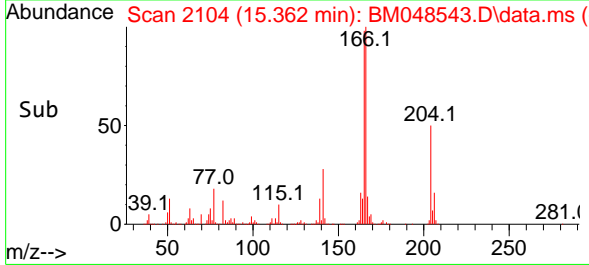
11/11/2024

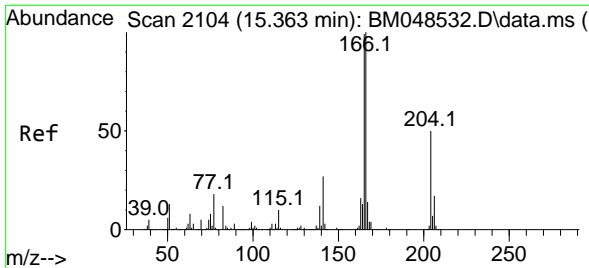


#61
 Fluorene
 Concen: 38.584 ng/u1
 RT: 15.362 min Scan# 2104
 Delta R.T. 0.000 min
 Lab File: BM048543.D
 Acq: 08 Nov 2024 23:31



Tgt Ion:166 Resp: 719319
 Ion Ratio Lower Upper
 166 100
 165 97.6 78.7 118.1
 167 13.8 11.0 16.6





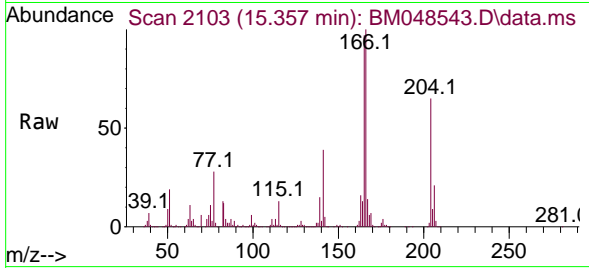
#62
 4-Chlorophenyl-phenylether
 Concen: 38.016 ng/ul
 RT: 15.357 min Scan# 2103
 Delta R.T. -0.006 min
 Lab File: BM048543.D
 Acq: 08 Nov 2024 23:31

Instrument :

BNA_M

ClientSampleId :

SLCS769

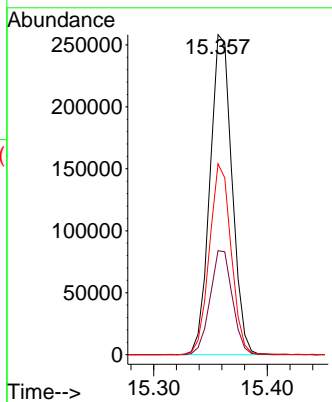
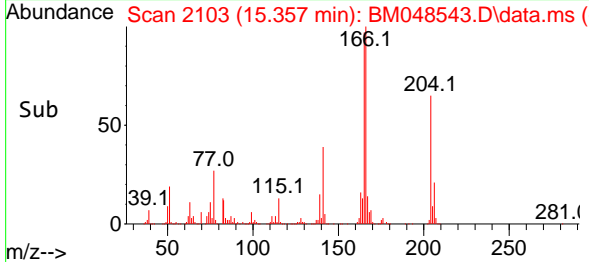


Tgt Ion:204 Resp: 34916
 Ion Ratio Lower Upper
 204 100
 206 32.5 26.0 39.0
 141 59.6 45.4 68.2

Manual Integrations

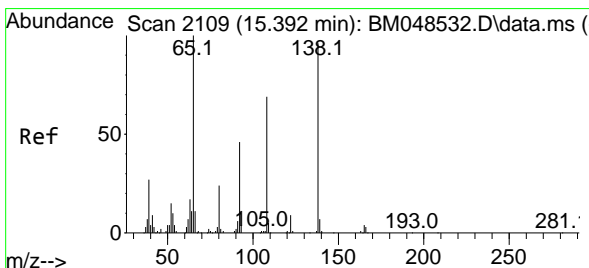
APPROVED

Reviewed By :Yogesh Patel 11/10/2024
 Supervised By :mohammad ahmed 11/11/2024

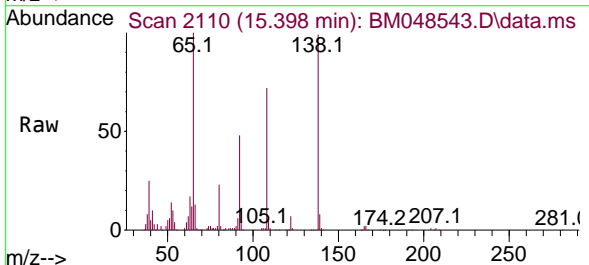


11/10/2024
 Supervised By :mohammad
 ahmed

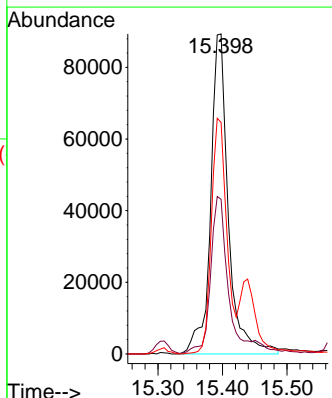
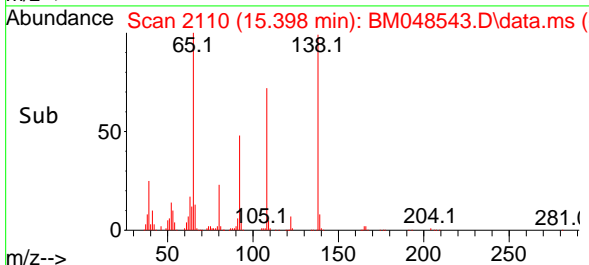
11/11/2024

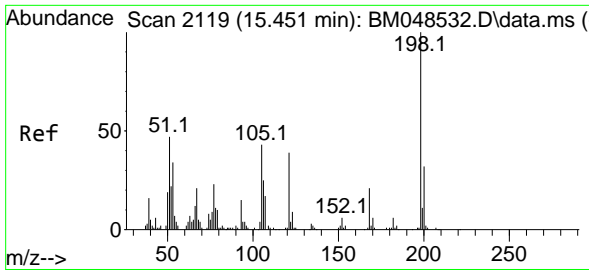


#63
 4-Nitroaniline
 Concen: 44.721 ng/ul m
 RT: 15.398 min Scan# 2110
 Delta R.T. 0.000 min
 Lab File: BM048543.D
 Acq: 08 Nov 2024 23:31



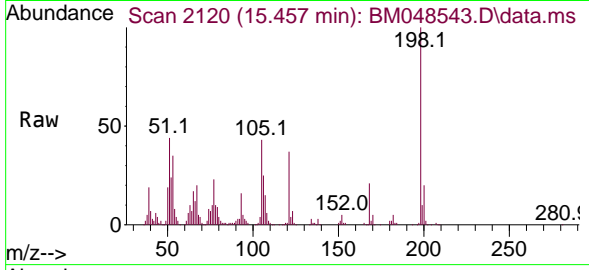
Tgt Ion:138 Resp: 170852
 Ion Ratio Lower Upper
 138 100
 92 48.3 39.7 59.5
 108 72.3 58.5 87.7





#66
 4,6-Dinitro-2-methylphenol
 Concen: 41.233 ng/ul
 RT: 15.457 min Scan# 2119
 Delta R.T. 0.000 min
 Lab File: BM048543.D
 Acq: 08 Nov 2024 23:31

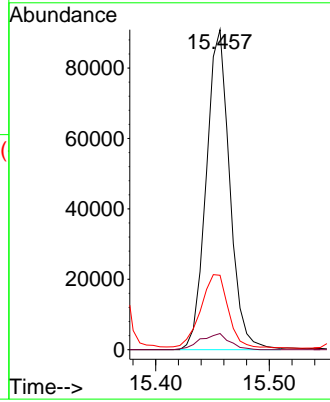
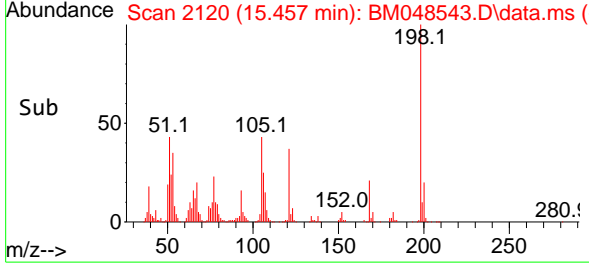
Instrument :
 BNA_M
 ClientSampleId :
 SLCS769



Tgt Ion:198 Resp: 130378
 Ion Ratio Lower Upper
 198 100
 182 5.1 5.0 7.6
 77 23.2 20.1 30.1

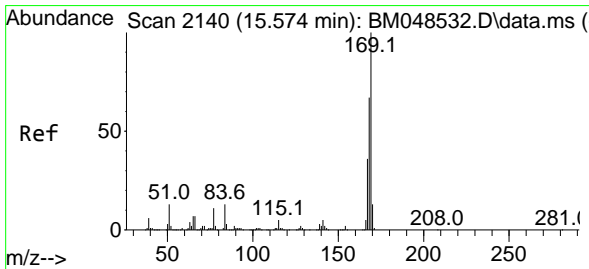
Manual Integrations
 APPROVED

Reviewed By :Yogesh Patel 11/10/2024
 Supervised By :mohammad ahmed 11/11/2024

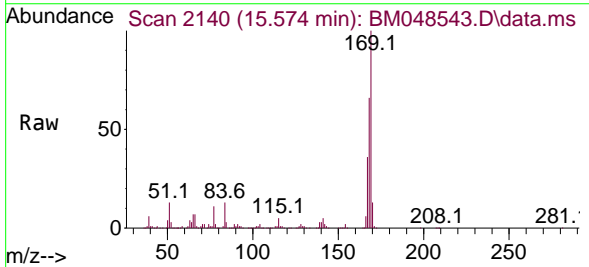


11/10/2024
 Supervised By :mohammad
 ahmed

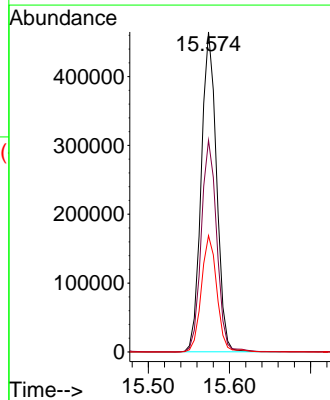
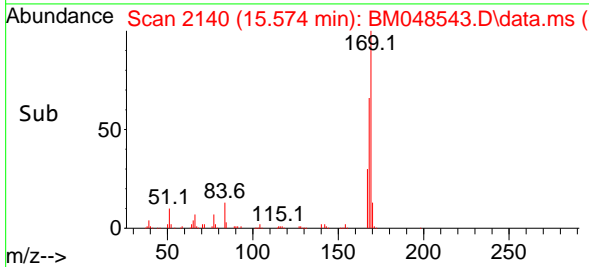
11/11/2024

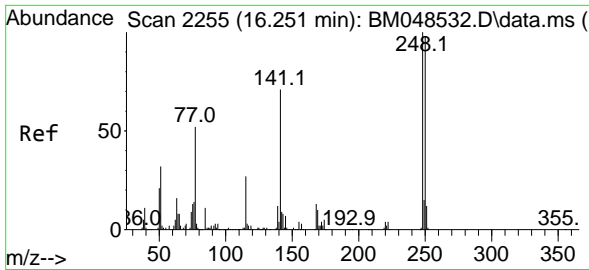


#67
 N-Nitrosodiphenylamine
 Concen: 40.019 ng/ul
 RT: 15.574 min Scan# 2140
 Delta R.T. 0.000 min
 Lab File: BM048543.D
 Acq: 08 Nov 2024 23:31



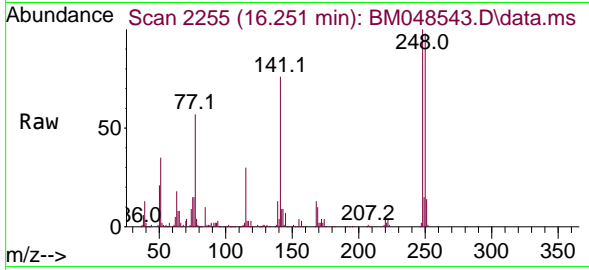
Tgt Ion:169 Resp: 609218
 Ion Ratio Lower Upper
 169 100
 168 66.1 52.6 79.0
 167 36.3 29.6 44.4





#68
 4-Bromophenyl-phenylether
 Concen: 39.430 ng/ul
 RT: 16.251 min Scan# 21
 Delta R.T. -0.006 min
 Lab File: BM048543.D
 Acq: 08 Nov 2024 23:31

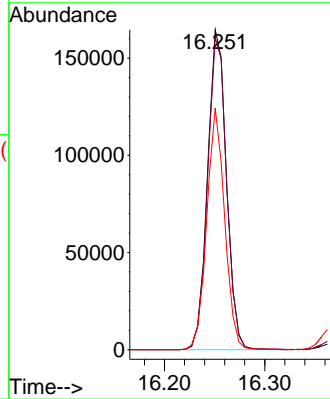
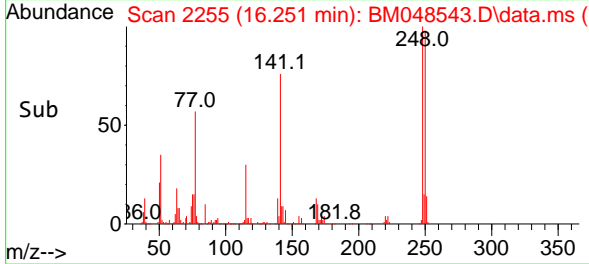
Instrument :
 BNA_M
 ClientSampleId :
 SLCS769



Tgt Ion:248 Resp: 214784
 Ion Ratio Lower Upper
 248 100
 250 97.6 79.4 119.2
 141 75.5 53.8 80.6

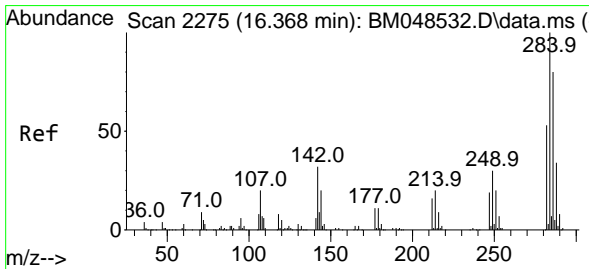
Manual Integrations
 APPROVED

Reviewed By :Yogesh Patel 11/10/2024
 Supervised By :mohammad ahmed 11/11/2024

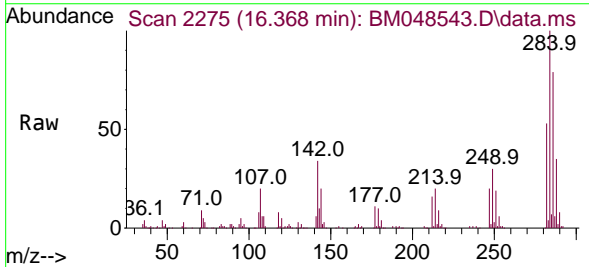


11/10/2024
 Supervised By :mohammad
 ahmed

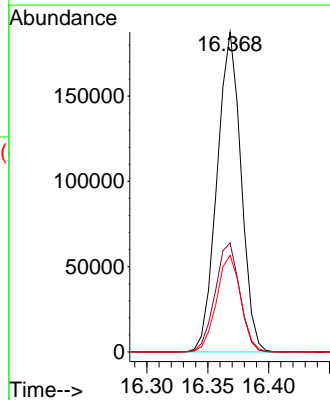
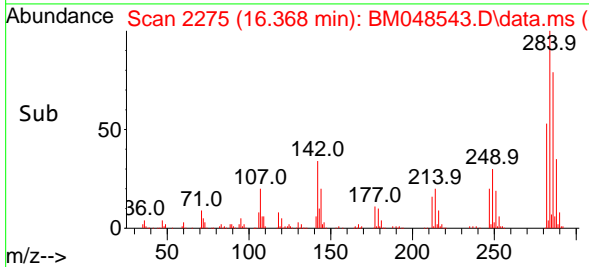
11/11/2024

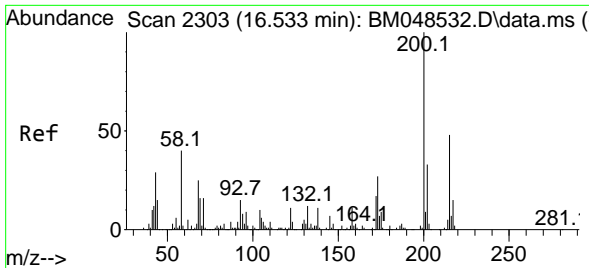


#69
 Hexachlorobenzene
 Concen: 39.140 ng/ul
 RT: 16.368 min Scan# 2275
 Delta R.T. 0.000 min
 Lab File: BM048543.D
 Acq: 08 Nov 2024 23:31



Tgt Ion:284 Resp: 257320
 Ion Ratio Lower Upper
 284 100
 142 34.0 27.5 41.3
 249 30.2 23.2 34.8





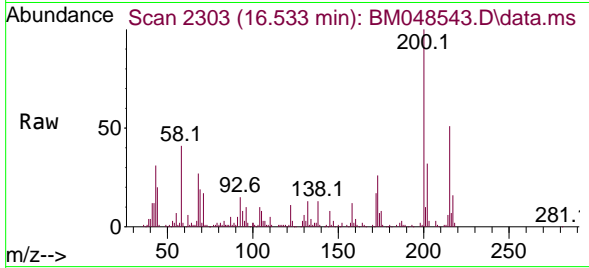
#70
 Atrazine
 Concen: 16.288 ng/u1
 RT: 16.533 min Scan# 21
 Delta R.T. 0.000 min
 Lab File: BM048543.D
 Acq: 08 Nov 2024 23:31

Instrument :

BNA_M

ClientSampleId :

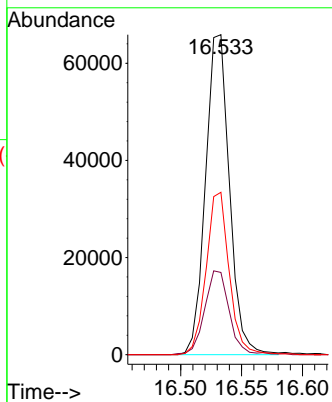
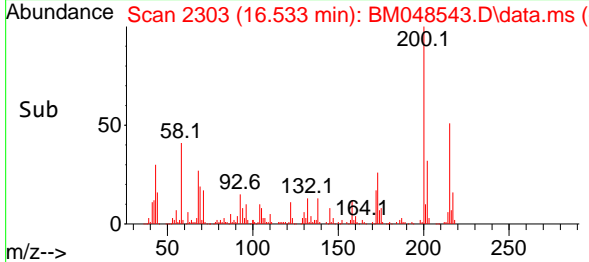
SLCS769



Tgt Ion:200 Resp: 90240
 Ion Ratio Lower Upper
 200 100
 173 25.7 20.2 30.2
 215 50.8 38.2 57.2

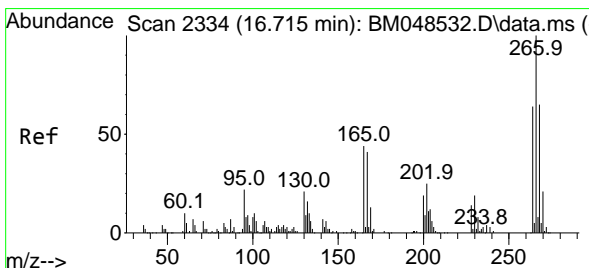
Manual Integrations
 APPROVED

Reviewed By :Yogesh Patel 11/10/2024
 Supervised By :mohammad ahmed 11/11/2024

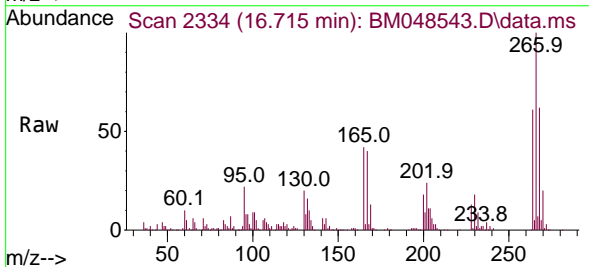


11/10/2024
 Supervised By :mohammad
 ahmed

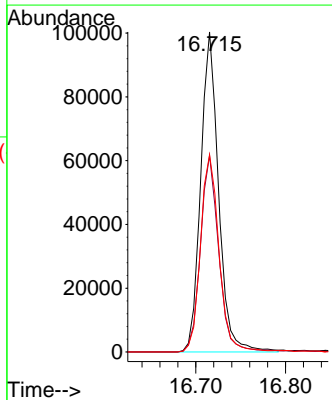
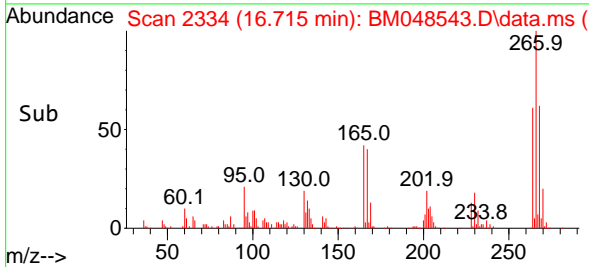
11/11/2024

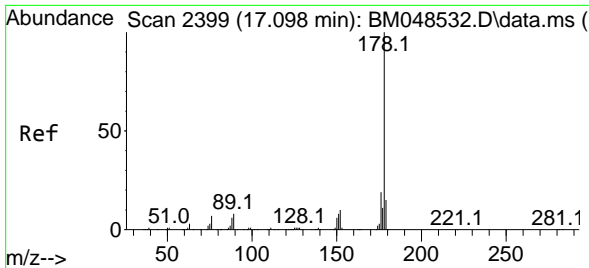


#71
 Pentachlorophenol
 Concen: 33.206 ng/u1
 RT: 16.715 min Scan# 2334
 Delta R.T. 0.000 min
 Lab File: BM048543.D
 Acq: 08 Nov 2024 23:31



Tgt Ion:266 Resp: 138747
 Ion Ratio Lower Upper
 266 100
 264 61.4 51.1 76.7
 268 61.7 53.2 79.8





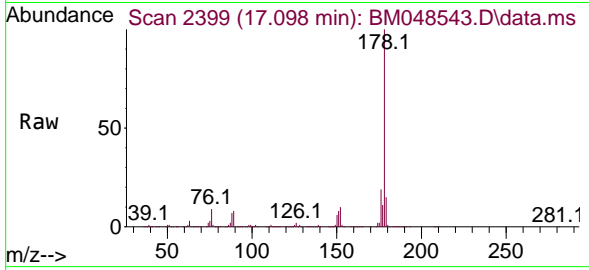
#72
 Phenanthrene
 Concen: 40.005 ng/u1
 RT: 17.098 min Scan# 2399
 Delta R.T. -0.006 min
 Lab File: BM048543.D
 Acq: 08 Nov 2024 23:31

Instrument :

BNA_M

ClientSampleId :

SLCS769



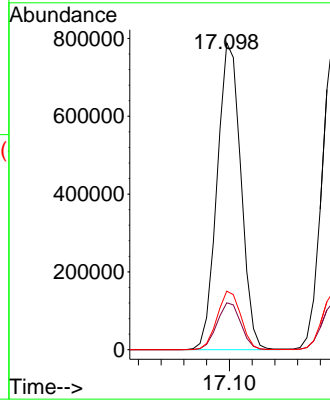
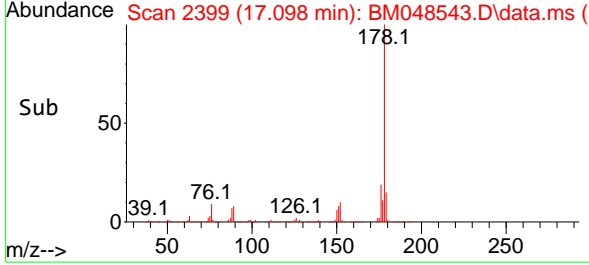
Tgt Ion:178 Resp: 1145974
 Ion Ratio Lower Upper
 178 100
 179 15.3 12.0 18.0
 176 19.1 15.1 22.7

Manual Integrations

APPROVED

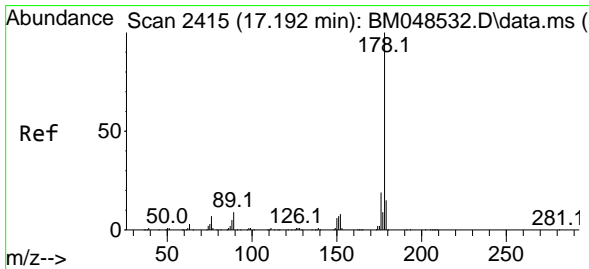
Reviewed By :Yogesh Patel 11/10/2024

Supervised By :mohammad ahmed 11/11/2024

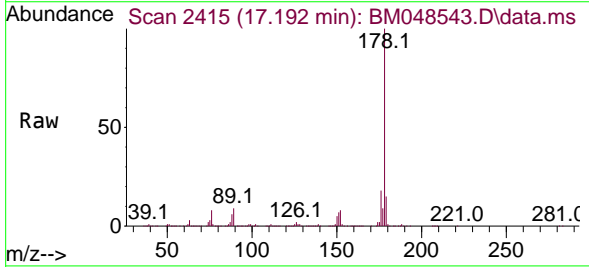


11/10/2024
 Supervised By :mohammad
 ahmed

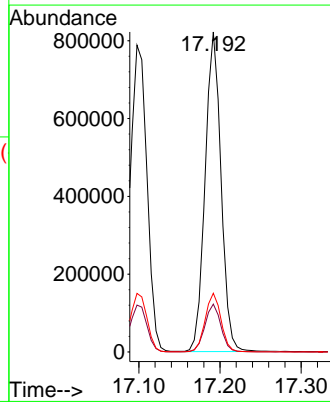
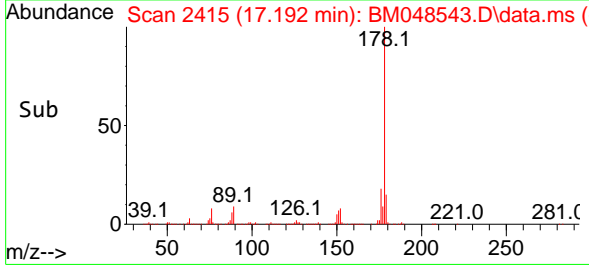
11/11/2024

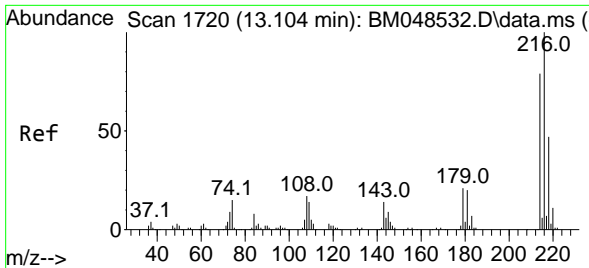


#74
 Anthracene
 Concen: 38.816 ng/u1
 RT: 17.192 min Scan# 2415
 Delta R.T. 0.000 min
 Lab File: BM048543.D
 Acq: 08 Nov 2024 23:31



Tgt Ion:178 Resp: 1115937
 Ion Ratio Lower Upper
 178 100
 179 14.9 12.6 19.0
 176 18.4 15.0 22.4





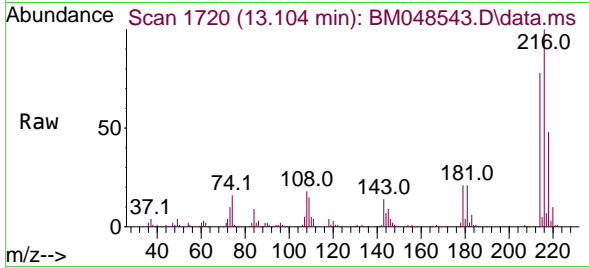
#75
 1,2,3,4-Tetrachlorobenzene
 Concen: 36.542 ng/uL
 RT: 13.104 min Scan# 11
 Delta R.T. -0.006 min
 Lab File: BM048543.D
 Acq: 08 Nov 2024 23:31

Instrument :

BNA_M

ClientSampleId :

SLCS769

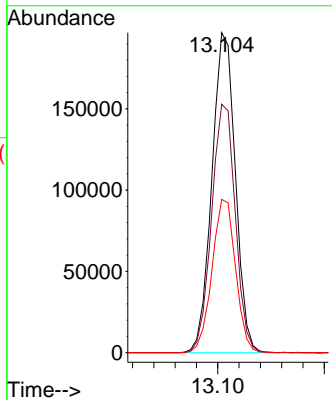
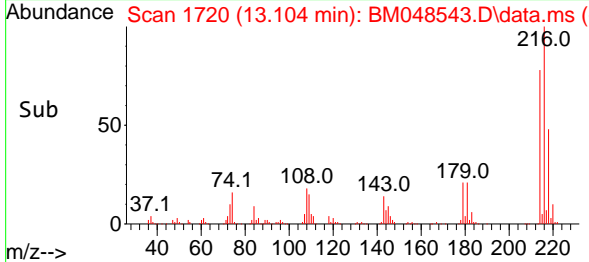


Tgt Ion:216 Resp: 30109
 Ion Ratio Lower Upper
 216 100
 214 77.7 61.9 92.9
 218 47.9 38.6 58.0

Manual Integrations

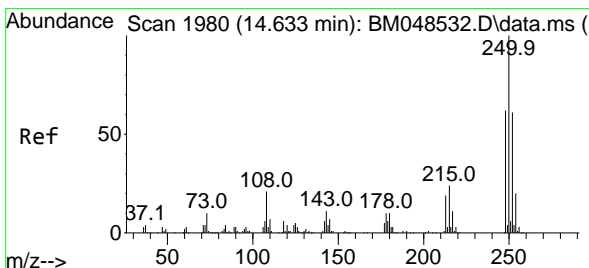
APPROVED

Reviewed By :Yogesh Patel 11/10/2024
 Supervised By :mohammad ahmed 11/11/2024

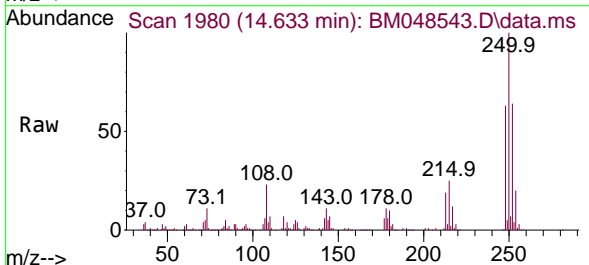


11/10/2024
 Supervised By :mohammad
 ahmed

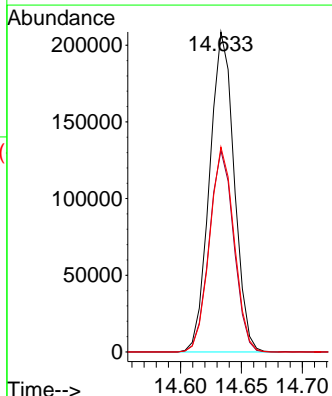
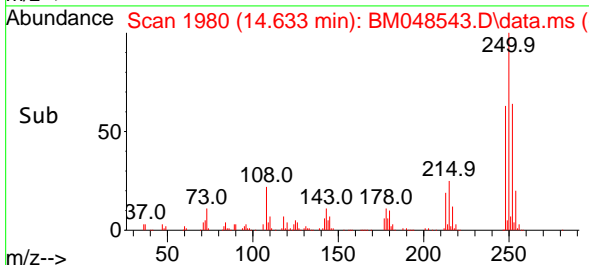
11/11/2024

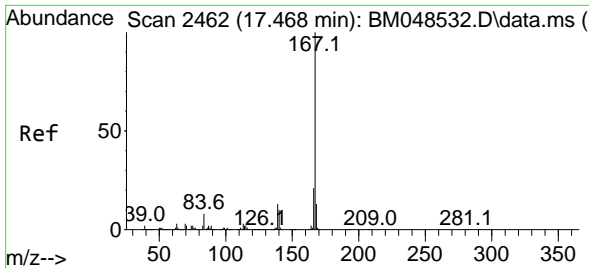


#76
 Pentachlorobenzene
 Concen: 36.469 ng/uL
 RT: 14.633 min Scan# 1980
 Delta R.T. 0.000 min
 Lab File: BM048543.D
 Acq: 08 Nov 2024 23:31



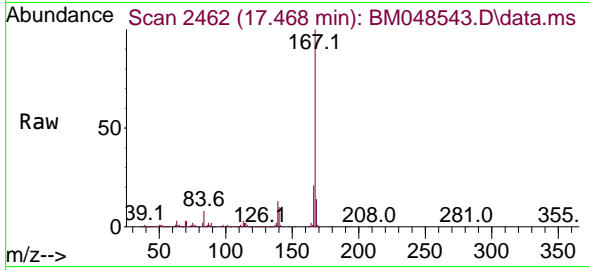
Tgt Ion:250 Resp: 292772
 Ion Ratio Lower Upper
 250 100
 248 63.0 49.7 74.5
 252 64.0 50.2 75.2





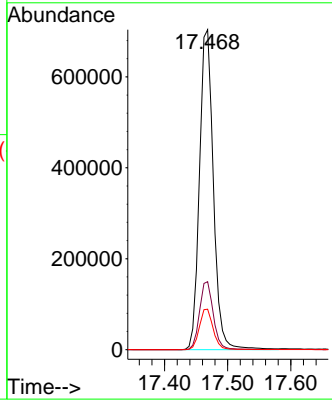
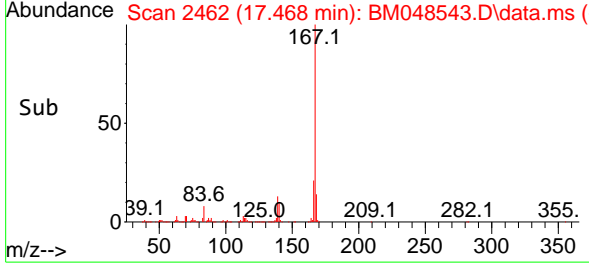
#77
 Carbazole
 Concen: 41.640 ng/u1
 RT: 17.468 min Scan# 2462
 Delta R.T. 0.000 min
 Lab File: BM048543.D
 Acq: 08 Nov 2024 23:31

Instrument :
 BNA_M
ClientSampleId :
 SLCS769



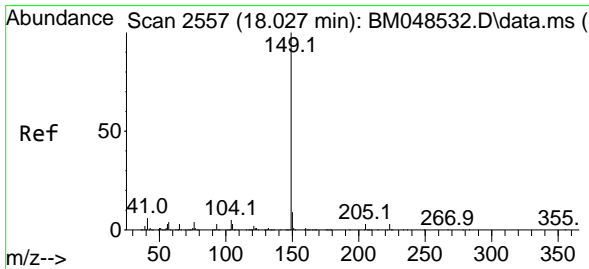
Tgt Ion:167 Resp: 107827
 Ion Ratio Lower Upper
 167 100
 166 21.3 16.4 24.6
 139 12.7 10.3 15.5

Manual Integrations
APPROVED
 Reviewed By :Yogesh Patel 11/10/2024
 Supervised By :mohammad ahmed 11/11/2024

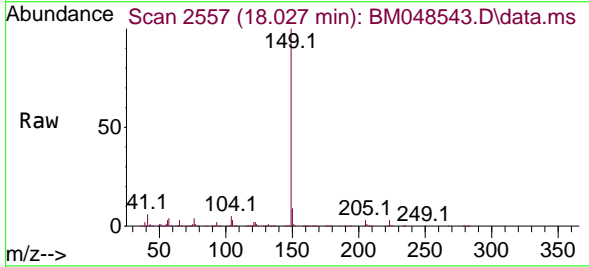


11/10/2024
 Supervised By :mohammad ahmed

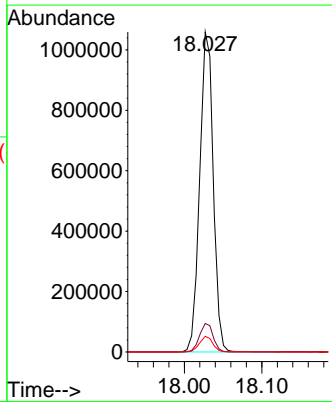
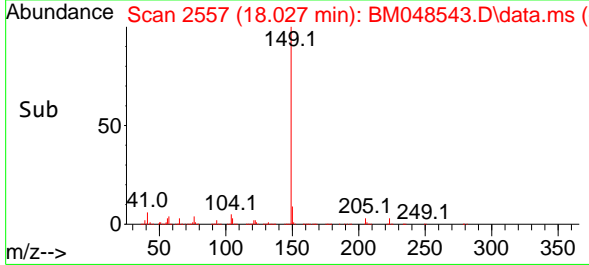
11/11/2024

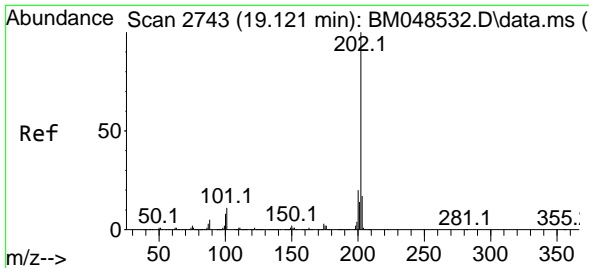


#78
 Di-n-butylphthalate
 Concen: 42.133 ng/u1
 RT: 18.027 min Scan# 2557
 Delta R.T. 0.000 min
 Lab File: BM048543.D
 Acq: 08 Nov 2024 23:31



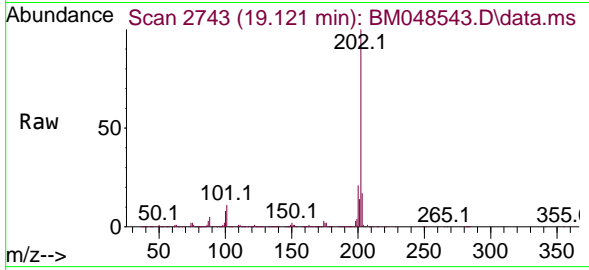
Tgt Ion:149 Resp: 1282714
 Ion Ratio Lower Upper
 149 100
 150 8.9 7.4 11.2
 104 4.9 4.0 6.0





#80
 Fluoranthene
 Concen: 40.502 ng/u1
 RT: 19.121 min Scan# 2743
 Delta R.T. 0.000 min
 Lab File: BM048543.D
 Acq: 08 Nov 2024 23:31

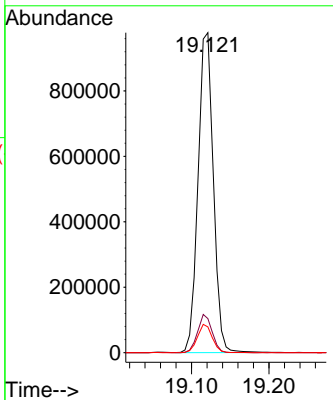
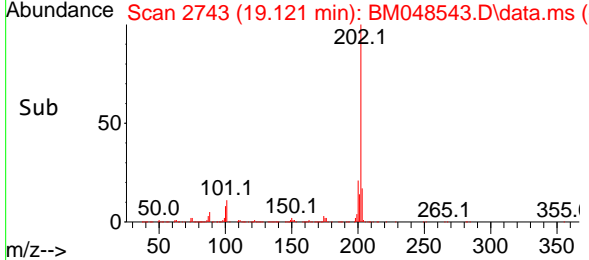
Instrument : BNA_M
 ClientSampleId : SLCS769



Tgt Ion:202 Resp: 134133
 Ion Ratio Lower Upper
 202 100
 101 10.7 8.5 12.7
 100 8.0 7.0 10.4

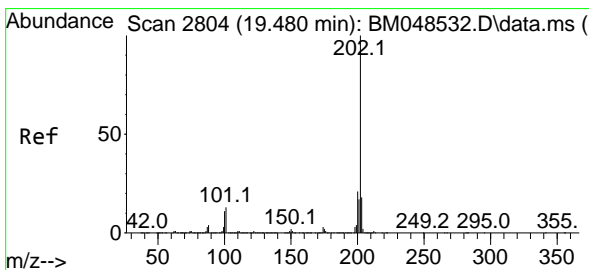
Manual Integrations
APPROVED

Reviewed By :Yogesh Patel 11/10/2024
 Supervised By :mohammad ahmed 11/11/2024



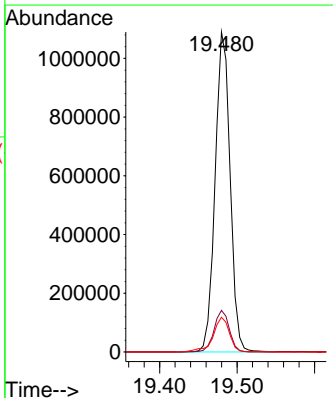
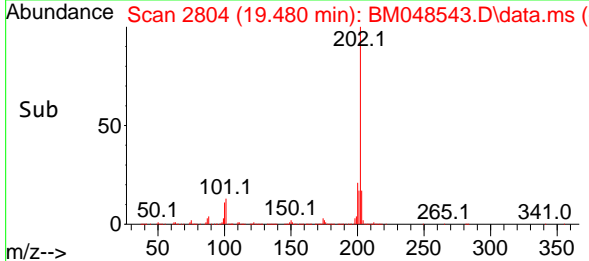
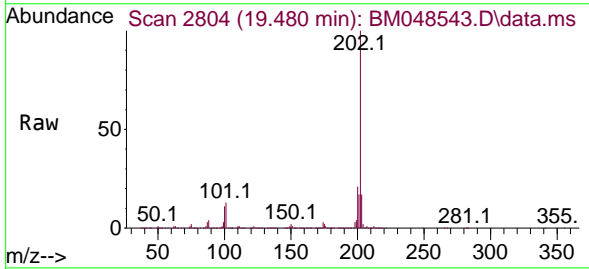
11/10/2024
 Supervised By :mohammad ahmed

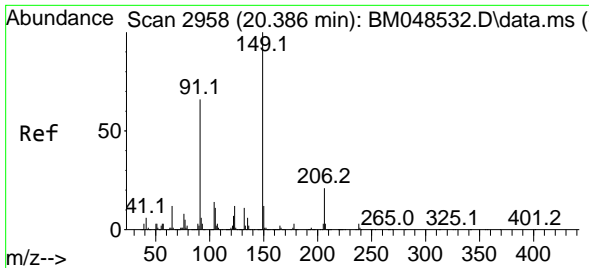
11/11/2024



#82
 Pyrene
 Concen: 40.898 ng/u1
 RT: 19.480 min Scan# 2804
 Delta R.T. 0.000 min
 Lab File: BM048543.D
 Acq: 08 Nov 2024 23:31

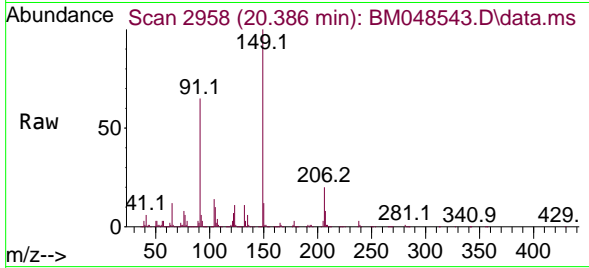
Tgt Ion:202 Resp: 1468668
 Ion Ratio Lower Upper
 202 100
 101 13.0 10.6 15.8
 100 10.8 8.9 13.3





#83
 Butylbenzylphthalate
 Concen: 43.296 ng/ul
 RT: 20.386 min Scan# 2958
 Delta R.T. 0.000 min
 Lab File: BM048543.D
 Acq: 08 Nov 2024 23:31

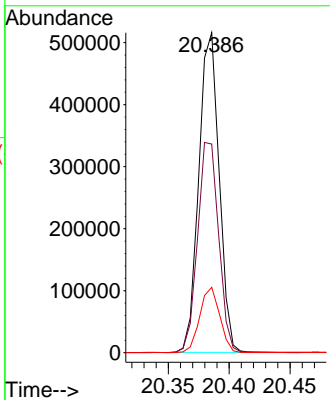
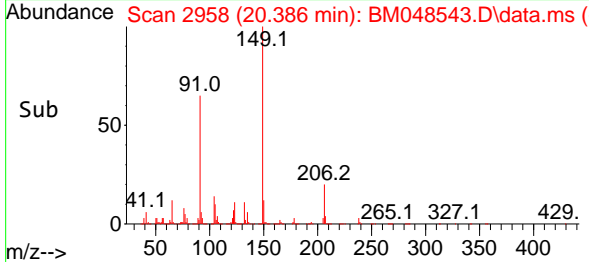
Instrument : BNA_M
 ClientSampleId : SLCS769



Tgt Ion:149 Resp: 597219
 Ion Ratio Lower Upper
 149 100
 91 65.2 53.1 79.7
 206 20.5 16.6 25.0

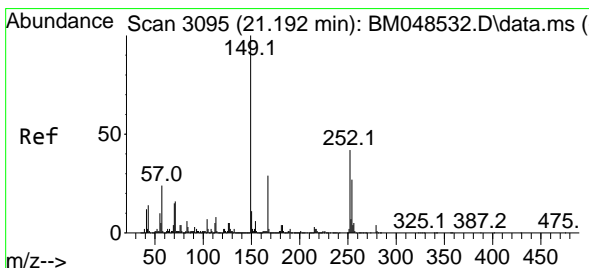
Manual Integrations
 APPROVED

Reviewed By :Yogesh Patel 11/10/2024
 Supervised By :mohammad ahmed 11/11/2024

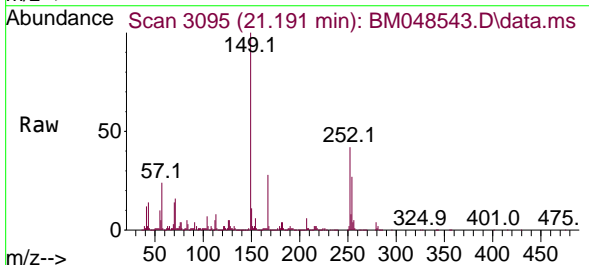


11/10/2024
 Supervised By :mohammad ahmed

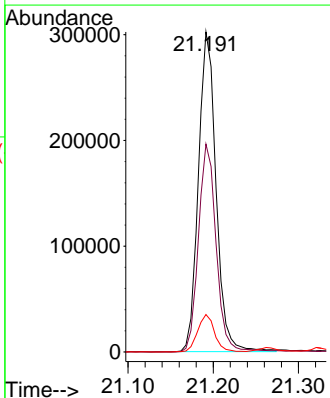
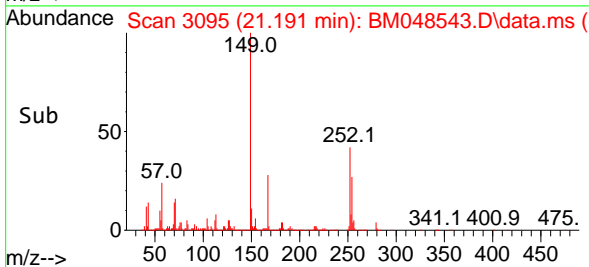
11/11/2024

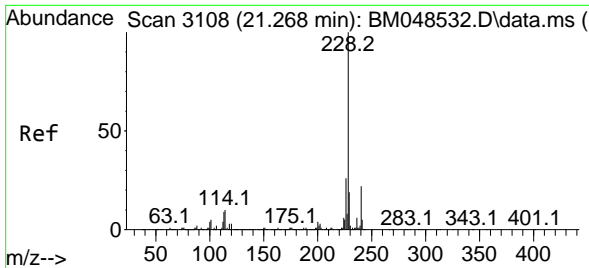


#84
 3,3'-Dichlorobenzidine
 Concen: 42.206 ng/ul
 RT: 21.191 min Scan# 3095
 Delta R.T. -0.006 min
 Lab File: BM048543.D
 Acq: 08 Nov 2024 23:31



Tgt Ion:252 Resp: 436140
 Ion Ratio Lower Upper
 252 100
 254 65.0 52.1 78.1
 126 11.7 8.3 12.5





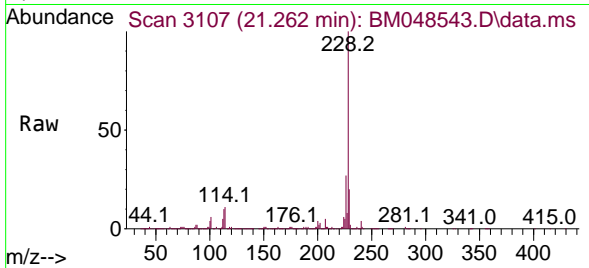
#85
 Benzo(a)anthracene
 Concen: 39.894 ng/uI
 RT: 21.262 min Scan# 3107
 Delta R.T. 0.000 min
 Lab File: BM048543.D
 Acq: 08 Nov 2024 23:31

Instrument :

BNA_M

ClientSampleId :

SLCS769



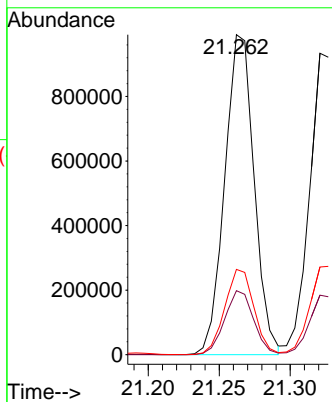
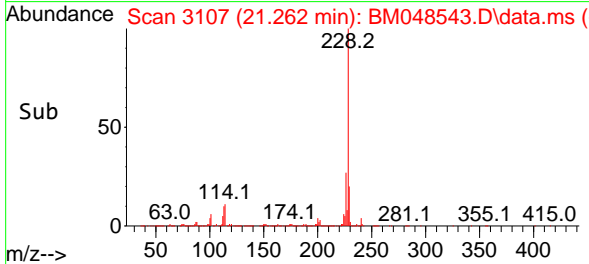
Tgt Ion:228 Resp: 1430294
 Ion Ratio Lower Upper
 228 100
 229 20.0 15.7 23.5
 226 26.7 21.7 32.5

Manual Integrations

APPROVED

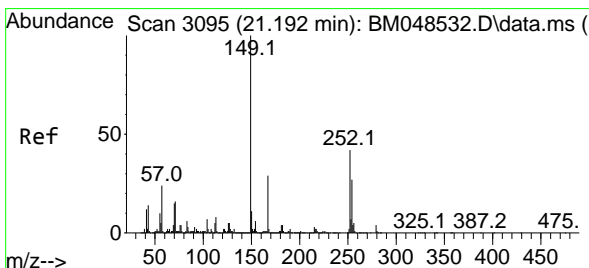
Reviewed By :Yogesh Patel 11/10/2024

Supervised By :mohammad ahmed 11/11/2024



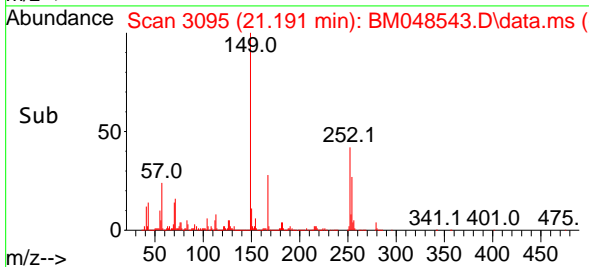
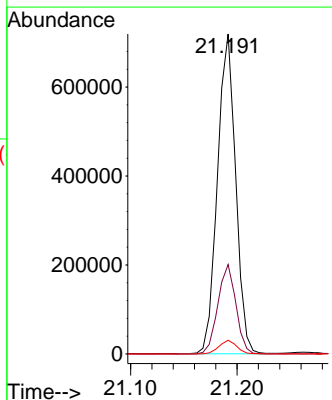
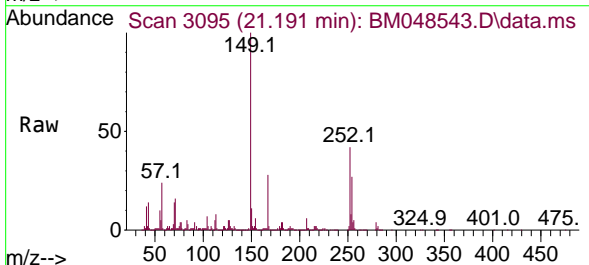
11/10/2024
 Supervised By :mohammad
 ahmed

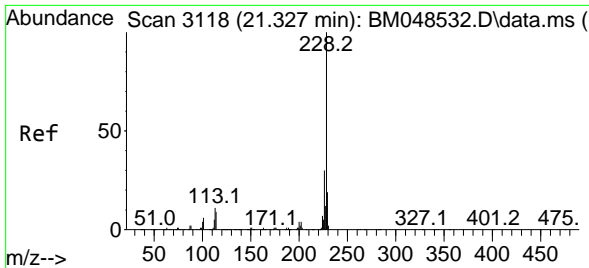
11/11/2024



#86
 Bis(2-ethylhexyl)phthalate
 Concen: 42.254 ng/uI
 RT: 21.191 min Scan# 3095
 Delta R.T. 0.000 min
 Lab File: BM048543.D
 Acq: 08 Nov 2024 23:31

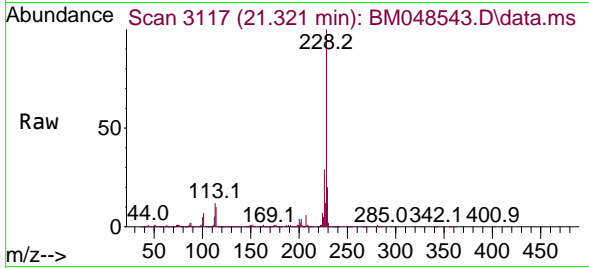
Tgt Ion:149 Resp: 850262
 Ion Ratio Lower Upper
 149 100
 167 27.9 22.0 33.0
 279 4.3 3.1 4.7





#87
 Chrysene
 Concen: 39.801 ng/u1
 RT: 21.321 min Scan# 3117
 Delta R.T. -0.006 min
 Lab File: BM048543.D
 Acq: 08 Nov 2024 23:31

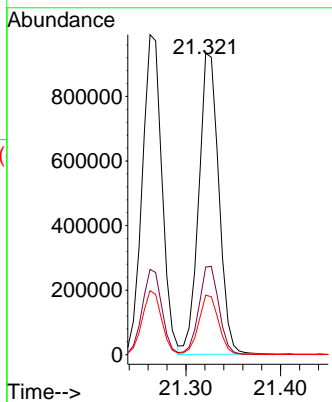
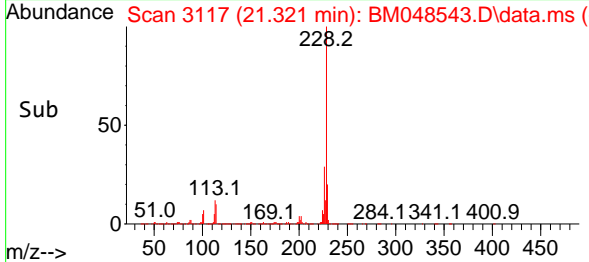
Instrument :
 BNA_M
 ClientSampleId :
 SLCS769



Tgt Ion:228 Resp: 1371209
 Ion Ratio Lower Upper
 228 100
 226 29.1 23.4 35.2
 229 19.8 15.6 23.4

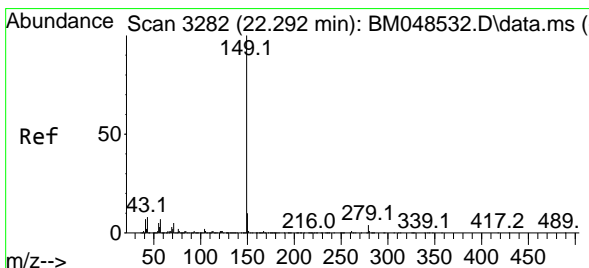
Manual Integrations
 APPROVED

Reviewed By :Yogesh Patel 11/10/2024
 Supervised By :mohammad ahmed 11/11/2024



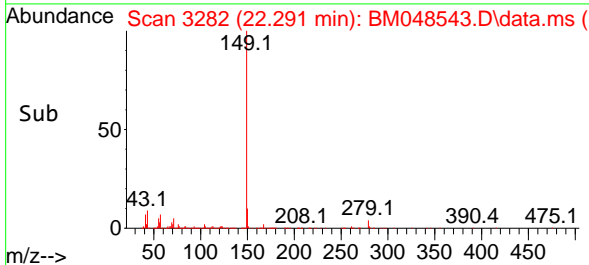
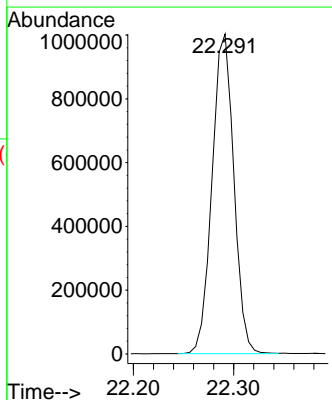
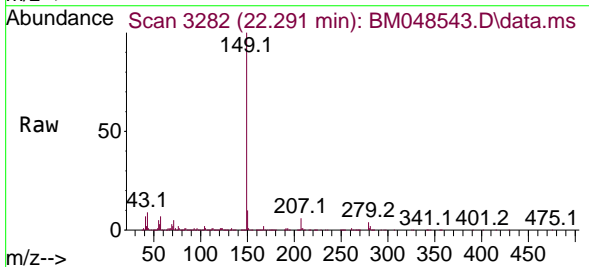
11/10/2024
 Supervised By :mohammad
 ahmed

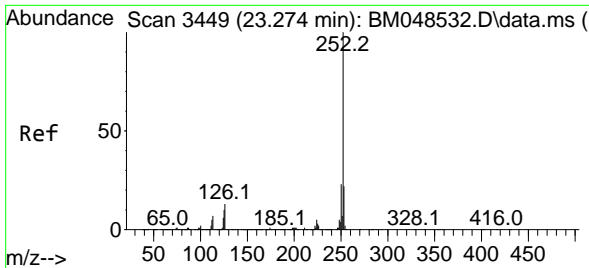
11/11/2024



#89
 Di-n-octyl phthalate
 Concen: 39.904 ng/u1
 RT: 22.291 min Scan# 3282
 Delta R.T. 0.000 min
 Lab File: BM048543.D
 Acq: 08 Nov 2024 23:31

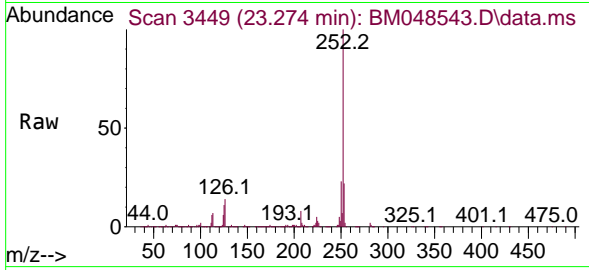
Tgt Ion:149 Resp: 1509338





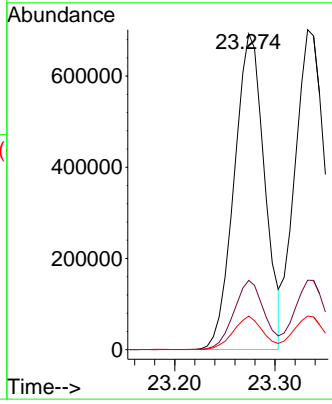
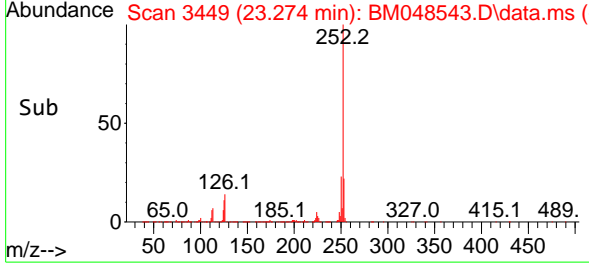
#90
 Benzo(b)fluoranthene
 Concen: 39.421 ng/ul
 RT: 23.274 min Scan# 3449
 Delta R.T. 0.000 min
 Lab File: BM048543.D
 Acq: 08 Nov 2024 23:31

Instrument : BNA_M
 ClientSampleId : SLCS769



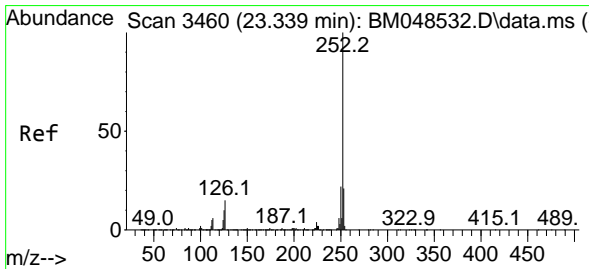
Tgt Ion:252 Resp: 1456049
 Ion Ratio Lower Upper
 252 100
 253 22.0 17.7 26.5
 125 10.6 8.7 13.1

Manual Integrations
APPROVED
 Reviewed By :Yogesh Patel 11/10/2024
 Supervised By :mohammad ahmed 11/11/2024

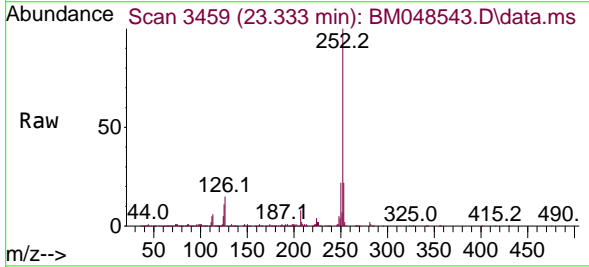


11/10/2024
 Supervised By :mohammad ahmed

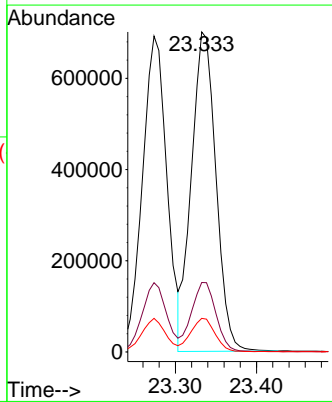
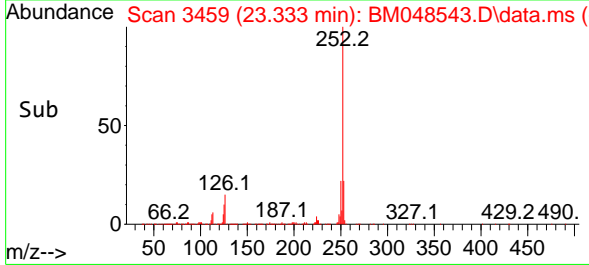
11/11/2024

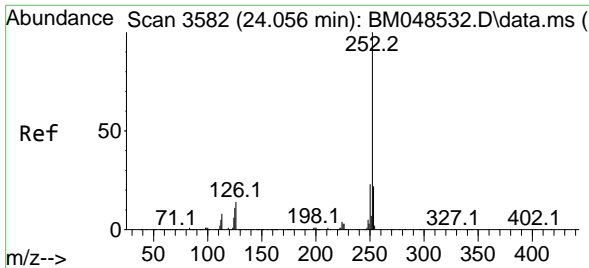


#91
 Benzo(k)fluoranthene
 Concen: 39.941 ng/ul
 RT: 23.333 min Scan# 3459
 Delta R.T. -0.006 min
 Lab File: BM048543.D
 Acq: 08 Nov 2024 23:31



Tgt Ion:252 Resp: 1470887
 Ion Ratio Lower Upper
 252 100
 253 21.7 17.4 26.0
 125 10.5 8.0 12.0





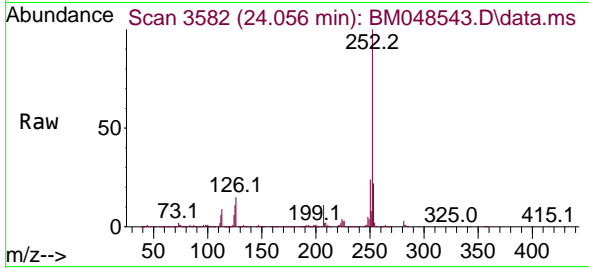
#93
 Benzo(a)pyrene
 Concen: 39.798 ng/u1
 RT: 24.056 min Scan# 3582
 Delta R.T. 0.000 min
 Lab File: BM048543.D
 Acq: 08 Nov 2024 23:31

Instrument :

BNA_M

ClientSampleId :

SLCS769



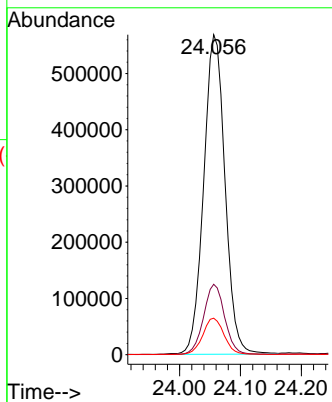
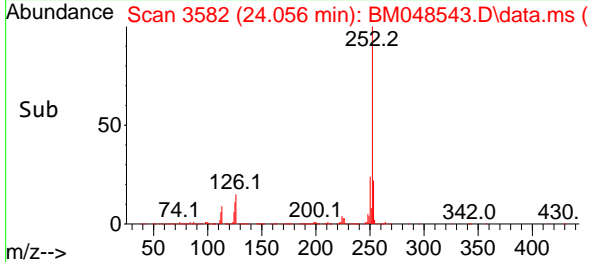
Tgt Ion:252 Resp: 1382034
 Ion Ratio Lower Upper
 252 100
 253 22.0 17.8 26.8
 125 11.4 9.1 13.7

Manual Integrations

APPROVED

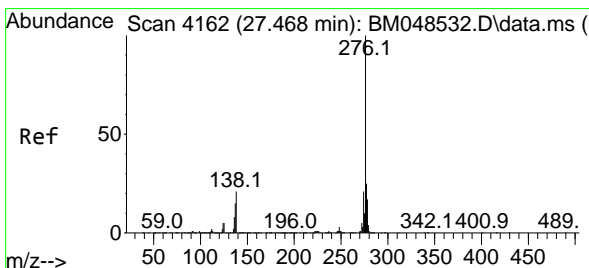
Reviewed By :Yogesh Patel 11/10/2024

Supervised By :mohammad ahmed 11/11/2024

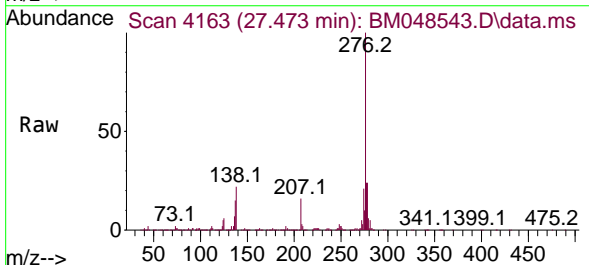


11/10/2024
 Supervised By :mohammad
 ahmed

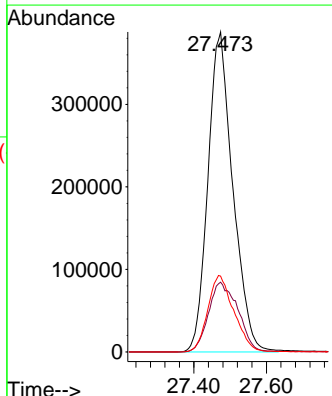
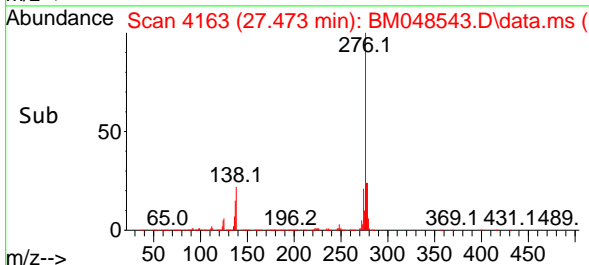
11/11/2024

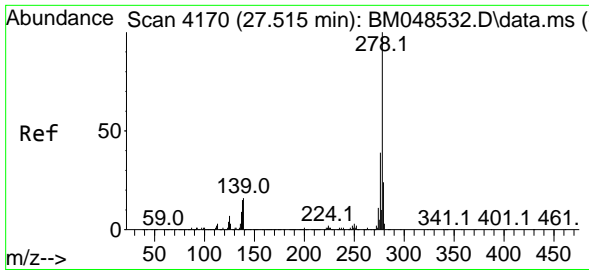


#94
 Indeno(1,2,3-cd)pyrene
 Concen: 40.918 ng/u1
 RT: 27.473 min Scan# 4163
 Delta R.T. 0.006 min
 Lab File: BM048543.D
 Acq: 08 Nov 2024 23:31



Tgt Ion:276 Resp: 1846599
 Ion Ratio Lower Upper
 276 100
 138 21.8 16.2 24.2
 277 23.7 19.5 29.3





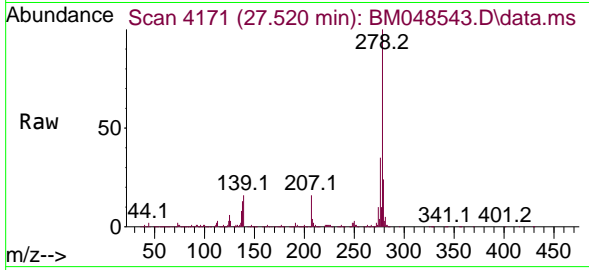
#95
 Dibenzo(a,h)anthracene
 Concen: 41.379 ng/ul
 RT: 27.520 min Scan# 4171
 Delta R.T. 0.006 min
 Lab File: BM048543.D
 Acq: 08 Nov 2024 23:31

Instrument :

BNA_M

ClientSampleId :

SLCS769



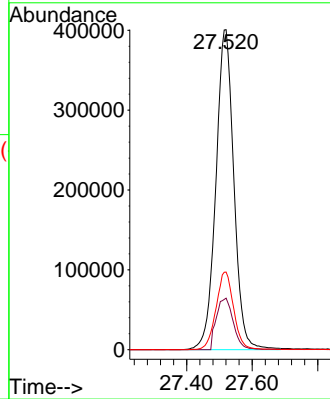
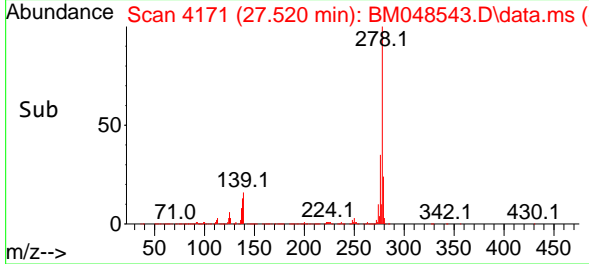
Tgt Ion:278 Resp: 152527
 Ion Ratio Lower Upper
 278 100
 139 16.1 12.6 18.8
 279 24.2 19.0 28.6

Manual Integrations

APPROVED

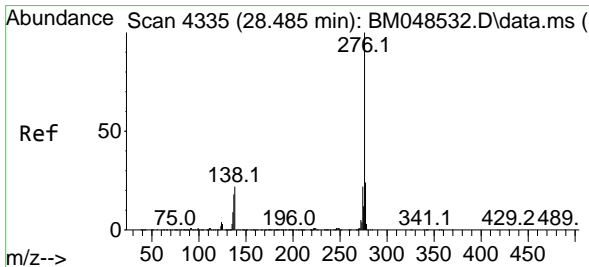
Reviewed By :Yogesh Patel 11/10/2024

Supervised By :mohammad ahmed 11/11/2024

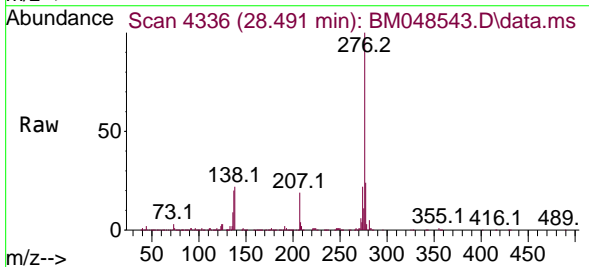


11/10/2024
 Supervised By :mohammad
 ahmed

11/11/2024



#96
 Benzo(g,h,i)perylene
 Concen: 41.079 ng/ul
 RT: 28.491 min Scan# 4336
 Delta R.T. 0.006 min
 Lab File: BM048543.D
 Acq: 08 Nov 2024 23:31



Tgt Ion:276 Resp: 1453592
 Ion Ratio Lower Upper
 276 100
 138 22.1 17.6 26.4
 277 23.6 18.6 28.0

