

Data Path : Z:\svoasrv\HPCHEM1\BNA_M\Data\BM110922\
 Data File : BM037438.D
 Acq On : 09 Nov 2022 15:54
 Operator : CG/JU
 Sample : N5436-09 10X
 Misc :
 ALS Vial : 7 Sample Multiplier: 1

Instrument :
 BNA_M
 ClientSampleId :
 250FERRYBLVD-TFS-09

Integration Parameters: rteint.p
 Integrator: RTE
 Smoothing : ON
 Sampling : 1
 Start Thrs: 0.2
 Stop Thrs : 0
 Filtering: 5
 Min Area: 3 % of largest Peak
 Max Peaks: 100
 Peak Location: TOP

If leading or trailing edge < 100 prefer < Baseline drop else tangent >
 Peak separation: 5

Method : Z:\svoasrv\HPCHEM1\BNA_M\Methods\8270-BM102822.M
 Title : ASP BNA STANDARDS FOR 5 POINT CALIBRATION

Signal : TIC: BM037438.D\data.ms

peak #	R.T. min	first scan	max scan	last scan	PK TY	peak height	corr. area	corr. % max.	% of total
1	4.934	305	314	320	rBV	167988	225834	1.80%	0.216%
2	5.398	387	393	397	rBV	468904	672765	5.36%	0.643%
3	5.445	397	401	413	rVB	264677	500782	3.99%	0.479%
4	5.816	458	464	471	rVB2	133877	206261	1.64%	0.197%
5	7.004	661	666	669	rBV	438564	697418	5.55%	0.667%
6	7.463	740	744	750	rVB	97966	148218	1.18%	0.142%
7	7.822	799	805	818	rVB	1182238	1818944	14.48%	1.740%
8	8.281	876	883	889	rBV	217003	351323	2.80%	0.336%
9	8.604	927	938	958	rBV	2050777	3537741	28.17%	3.383%
10	8.992	997	1004	1009	rBV	289473	491075	3.91%	0.470%
11	9.604	1099	1108	1117	rBV	119844	188330	1.50%	0.180%
12	9.810	1135	1143	1164	rBV	4892544	8288118	66.00%	7.927%
13	10.063	1176	1186	1194	rBV	2530346	4638490	36.94%	4.436%
14	10.122	1194	1196	1207	rVB3	102438	215816	1.72%	0.206%
15	10.510	1257	1262	1267	rBV	172252	294426	2.34%	0.282%
16	10.622	1275	1281	1286	rBV	1605160	2507341	19.97%	2.398%
17	10.675	1286	1290	1296	rVB	186264	296516	2.36%	0.284%
18	10.775	1296	1307	1320	rBV	539498	964309	7.68%	0.922%
19	10.904	1324	1329	1337	rVB	104292	173173	1.38%	0.166%
20	10.992	1337	1344	1352	rBV	444936	857324	6.83%	0.820%
21	11.169	1368	1374	1380	rBV	662282	1083877	8.63%	1.037%
22	11.251	1380	1388	1401	rVB	218697	484388	3.86%	0.463%
23	11.463	1417	1424	1429	rBV2	252991	447444	3.56%	0.428%
24	11.657	1449	1457	1463	rBV	213492	385502	3.07%	0.369%
25	12.286	1559	1564	1568	rBV	93480	146356	1.17%	0.140%
26	12.674	1621	1630	1642	rBV6	53618	200645	1.60%	0.192%
27	12.980	1676	1682	1691	rVV	670145	1132385	9.02%	1.083%
28	13.086	1694	1700	1708	rVB	783600	1131235	9.01%	1.082%
29	13.304	1729	1737	1745	rVB4	186029	371751	2.96%	0.356%
30	13.474	1758	1766	1787	rVB10	65251	313857	2.50%	0.300%
31	13.827	1820	1826	1830	rBV3	70201	139828	1.11%	0.134%
32	13.945	1830	1846	1860	rBV3	2071305	5453642	43.43%	5.216%
33	14.051	1860	1864	1868	rVV	465099	705673	5.62%	0.675%
34	14.092	1868	1871	1882	rVB	258760	472213	3.76%	0.452%
35	14.221	1889	1893	1898	rVV2	151388	320043	2.55%	0.306%
36	14.280	1898	1903	1911	rVB	366504	653171	5.20%	0.625%

Data Path : Z:\svoasrv\HPCHEM1\BNA_M\Data\BM110922\
 Data File : BM037438.D
 Acq On : 09 Nov 2022 15:54
 Operator : CG/JU
 Sample : N5436-09 10X
 Misc :
 ALS Vial : 7 Sample Multiplier: 1

Instrument :
 BNA_M
 ClientSampleId :
 250FERRYBLVD-TFS-09

Integration Parameters: rteint.p
 Integrator: RTE
 Smoothing : ON Filtering: 5
 Sampling : 1 Min Area: 3 % of largest Peak
 Start Thrs: 0.2 Max Peaks: 100
 Stop Thrs : 0 Peak Location: TOP

If leading or trailing edge < 100 prefer < Baseline drop else tangent >
 Peak separation: 5

Method : Z:\svoasrv\HPCHEM1\BNA_M\Methods\8270-BM102822.M
 Title : ASP BNA STANDARDS FOR 5 POINT CALIBRATION

37	14.463	1923	1934	1938	rBV	2565550	4279640	34.08%	4.093%
38	14.521	1939	1944	1956	rVB4	797392	2128662	16.95%	2.036%
39	14.857	1996	2001	2009	rBV	135628	276194	2.20%	0.264%
40	15.062	2032	2036	2045	rBV9	62487	192712	1.53%	0.184%
41	15.510	2107	2112	2118	rBV2	171317	279973	2.23%	0.268%
42	15.710	2142	2146	2151	rVB4	130174	187285	1.49%	0.179%
43	15.951	2182	2187	2193	rVB	629805	860441	6.85%	0.823%
44	17.204	2395	2400	2405	rBV	2733451	3868709	30.81%	3.700%
45	17.245	2405	2407	2415	rVB	524453	686584	5.47%	0.657%
46	17.339	2420	2423	2427	rVB	127557	149810	1.19%	0.143%
47	17.380	2427	2430	2439	rBV8	58513	145534	1.16%	0.139%
48	17.851	2505	2510	2518	rVB	2099805	2665453	21.23%	2.549%
49	18.098	2548	2552	2563	rBV2	1061924	1907383	15.19%	1.824%
50	18.274	2579	2582	2587	rBV2	142265	201965	1.61%	0.193%
51	18.392	2598	2602	2606	rBV2	239274	352232	2.80%	0.337%
52	18.603	2634	2638	2642	rBV	742353	928390	7.39%	0.888%
53	18.980	2699	2702	2705	rBV	221000	317810	2.53%	0.304%
54	19.021	2705	2709	2718	rVB	779282	1168957	9.31%	1.118%
55	19.262	2746	2750	2756	rBV	1165852	1689359	13.45%	1.616%
56	19.309	2756	2758	2764	rVB	405779	498739	3.97%	0.477%
57	19.380	2766	2770	2774	rBV	827835	1155438	9.20%	1.105%
58	19.627	2807	2812	2821	rVB	10518451	12557533	100.00%	12.010%
59	19.827	2842	2846	2849	rBV	1111174	1288910	10.26%	1.233%
60	19.868	2849	2853	2859	rVB	5426683	6739014	53.67%	6.445%
61	20.268	2917	2921	2927	rBV3	573814	960651	7.65%	0.919%
62	20.362	2934	2937	2939	rBV	367045	407139	3.24%	0.389%
63	20.550	2965	2969	2973	rBV	1567438	2116695	16.86%	2.024%
64	20.844	3016	3019	3025	rVB2	853454	1036974	8.26%	0.992%
65	21.003	3044	3046	3049	rBV	404183	477028	3.80%	0.456%
66	21.092	3059	3061	3064	rBV2	483968	521361	4.15%	0.499%
67	21.386	3106	3111	3122	rVB	3443929	6306233	50.22%	6.031%
68	21.780	3175	3178	3185	rVB	1215394	1506447	12.00%	1.441%
69	21.850	3187	3190	3193	rBV	1071841	1278644	10.18%	1.223%
70	23.727	3504	3509	3530	rVB2	2310392	4907547	39.08%	4.693%

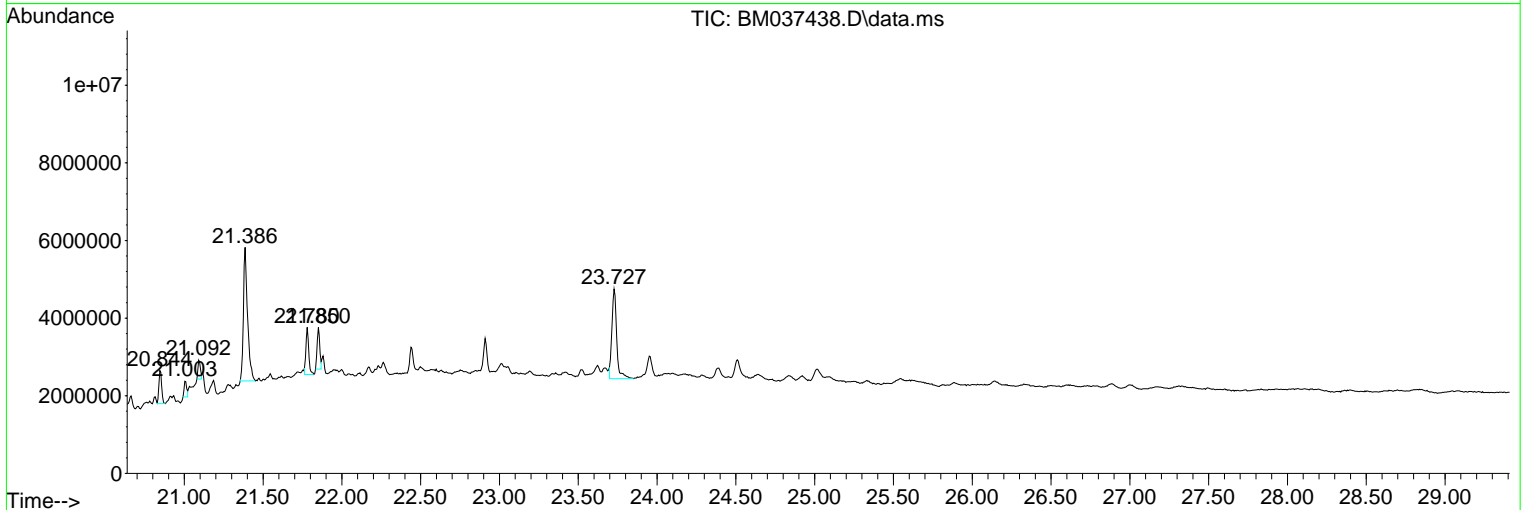
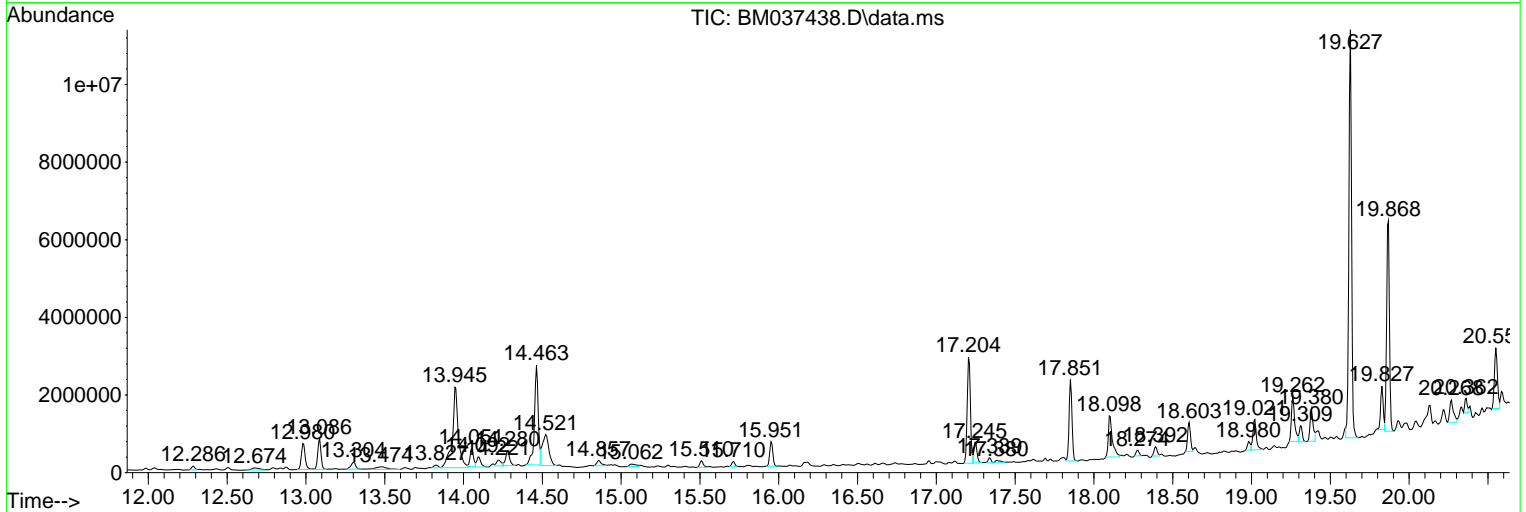
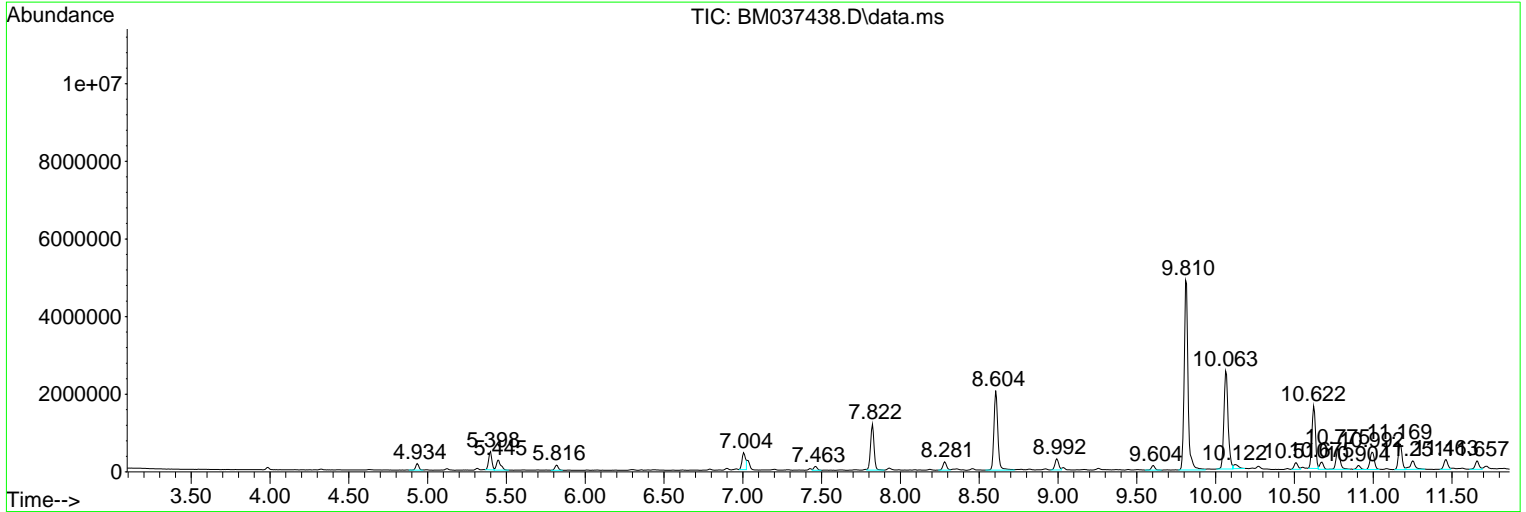
Sum of corrected areas: 104561660

Data Path : Z:\svoasrv\HPCHEM1\BNA_M\Data\BM110922\
 Data File : BM037438.D
 Acq On : 09 Nov 2022 15:54
 Operator : CG/JU
 Sample : N5436-09 10X
 Misc :
 ALS Vial : 7 Sample Multiplier: 1

Instrument :
 BNA_M
 ClientSampleId :
 250FERRYBLVD-TFS-09

Quant Method : Z:\svoasrv\HPCHEM1\BNA_M\Methods\8270-BM102822.M
 Quant Title : ASP BNA STANDARDS FOR 5 POINT CALIBRATION

TIC Library : C:\Database\NIST20.L
 TIC Integration Parameters: LSCINT.P



Data Path : Z:\svoasrv\HPCHEM1\BNA_M\Data\BM110922\
 Data File : BM037438.D
 Acq On : 09 Nov 2022 15:54
 Operator : CG/JU
 Sample : N5436-09 10X
 Misc :
 ALS Vial : 7 Sample Multiplier: 1

Instrument :
 BNA_M
 ClientSampleId :
 250FERRYBLVD-TFS-09

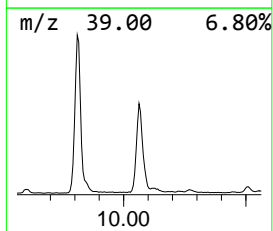
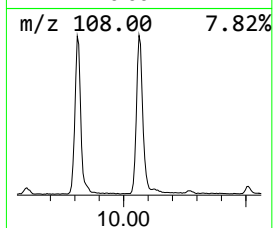
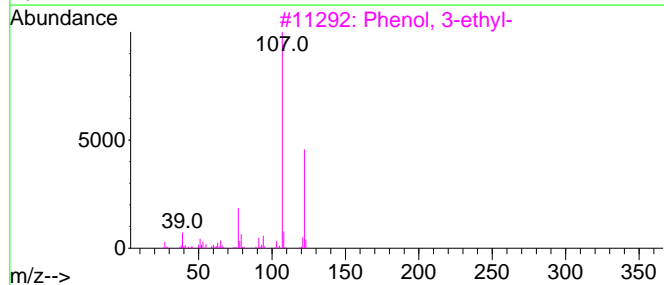
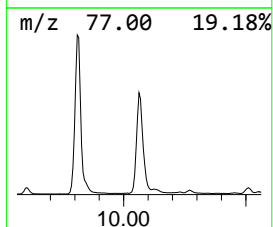
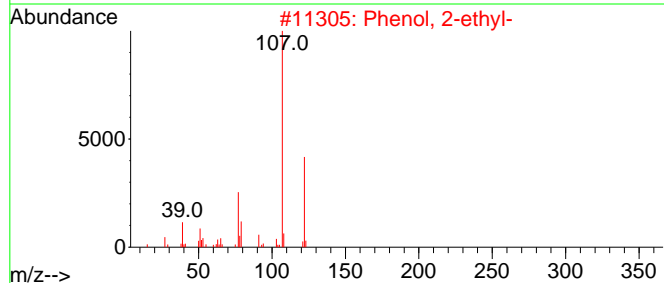
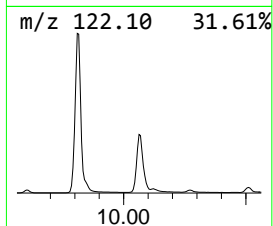
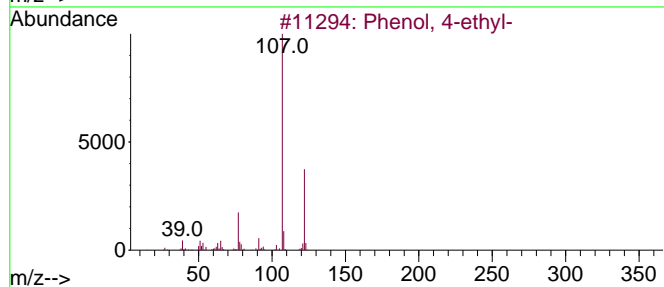
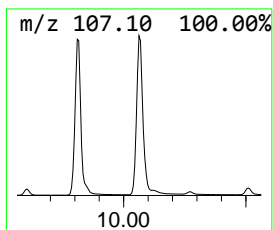
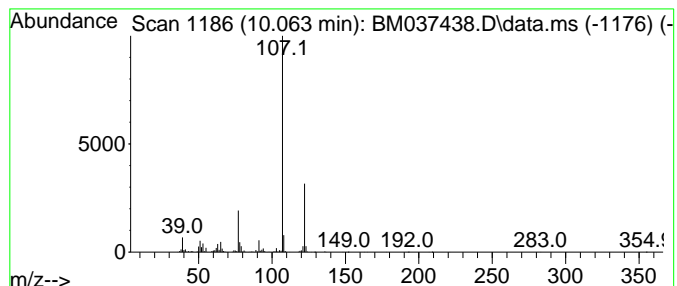
Quant Method : Z:\svoasrv\HPCHEM1\BNA_M\Methods\8270-BM102822.M
 Quant Title : ASP BNA STANDARDS FOR 5 POINT CALIBRATION

TIC Library : C:\Database\NIST20.L
 TIC Integration Parameters: LSCINT.P

 Peak Number 1 Phenol, 4-ethyl- Concentration Rank 1

R.T.	EstConc	Area	Relative to ISTD	R.T.
10.063	37.00 ng	4638490	Naphthalene-d8	10.622

Hit#	of 5	Tentative ID	MW	MolForm	CAS#	Qual
1		Phenol, 4-ethyl-	122	C8H10O	000123-07-9	95
2		Phenol, 2-ethyl-	122	C8H10O	000090-00-6	91
3		Phenol, 3-ethyl-	122	C8H10O	000620-17-7	86
4		3,3-Dimethyl-6-methylenecyclohexene	122	C9H14	020185-16-4	78
5		Phenol, 3,4-dimethyl-	122	C8H10O	000095-65-8	78



Data Path : Z:\svoasrv\HPCHEM1\BNA_M\Data\BM110922\
 Data File : BM037438.D
 Acq On : 09 Nov 2022 15:54
 Operator : CG/JU
 Sample : N5436-09 10X
 Misc :
 ALS Vial : 7 Sample Multiplier: 1

Instrument :
 BNA_M
 ClientSampleId :
 250FERRYBLVD-TFS-09

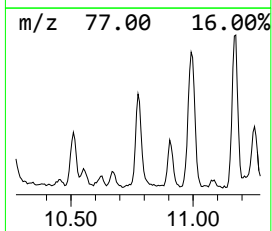
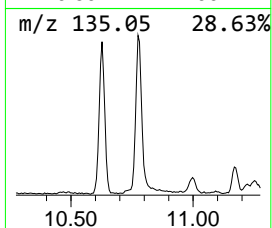
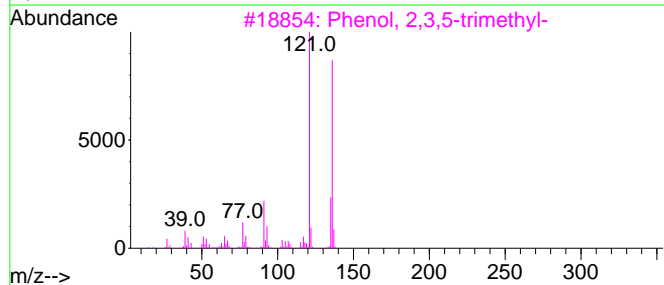
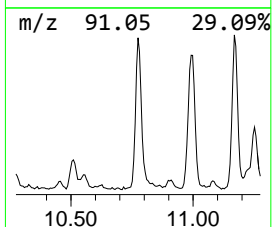
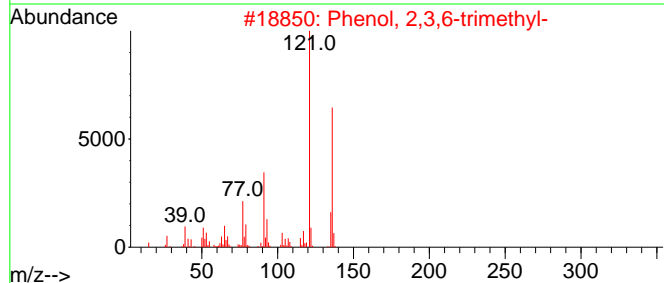
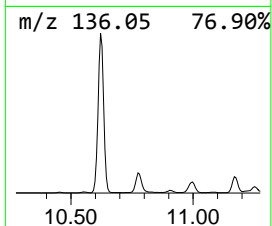
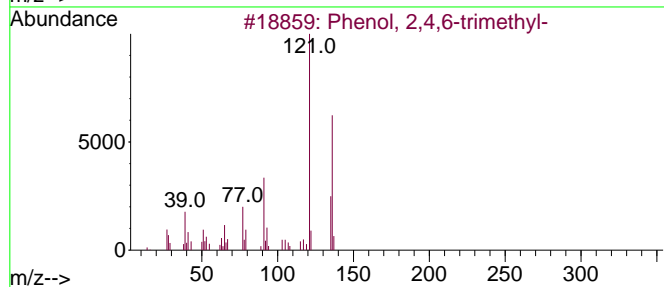
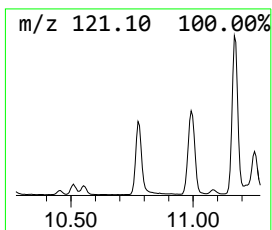
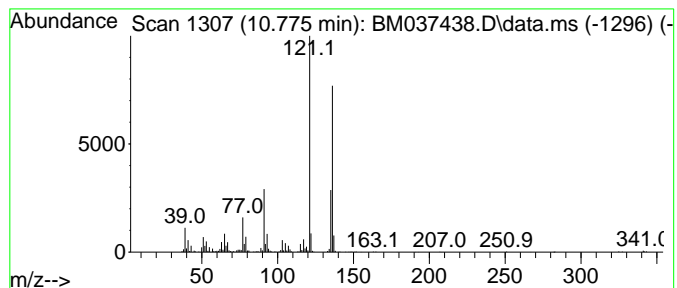
Quant Method : Z:\svoasrv\HPCHEM1\BNA_M\Methods\8270-BM102822.M
 Quant Title : ASP BNA STANDARDS FOR 5 POINT CALIBRATION

TIC Library : C:\Database\NIST20.L
 TIC Integration Parameters: LSCINT.P

 Peak Number 2 Phenol, 2,4,6-trimethyl- Concentration Rank 7

R.T.	EstConc	Area	Relative to ISTD	R.T.
10.775	7.69 ng	964309	Naphthalene-d8	10.622

Hit#	of 5	Tentative ID	MW	MolForm	CAS#	Qual
1		Phenol, 2,4,6-trimethyl-	136	C9H12O	000527-60-6	95
2		Phenol, 2,3,6-trimethyl-	136	C9H12O	002416-94-6	94
3		Phenol, 2,3,5-trimethyl-	136	C9H12O	000697-82-5	91
4		Phenol, 3,4,5-trimethyl-	136	C9H12O	000527-54-8	91
5		Phenol, 2,4,5-trimethyl-	136	C9H12O	000496-78-6	91



Data Path : Z:\svoasrv\HPCHEM1\BNA_M\Data\BM110922\
 Data File : BM037438.D
 Acq On : 09 Nov 2022 15:54
 Operator : CG/JU
 Sample : N5436-09 10X
 Misc :
 ALS Vial : 7 Sample Multiplier: 1

Instrument :
 BNA_M
 ClientSampleId :
 250FERRYBLVD-TFS-09

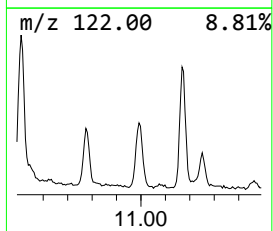
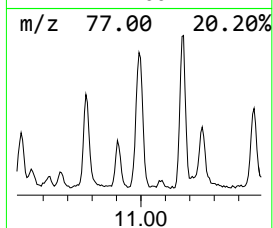
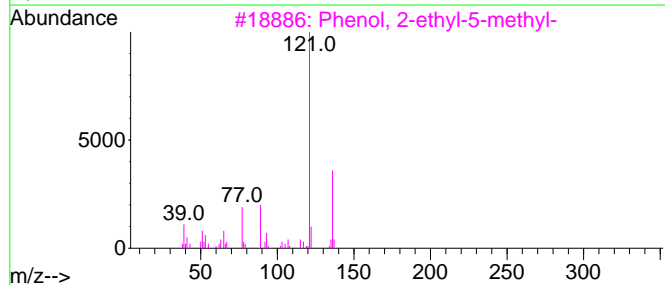
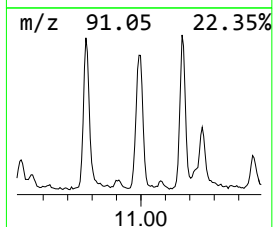
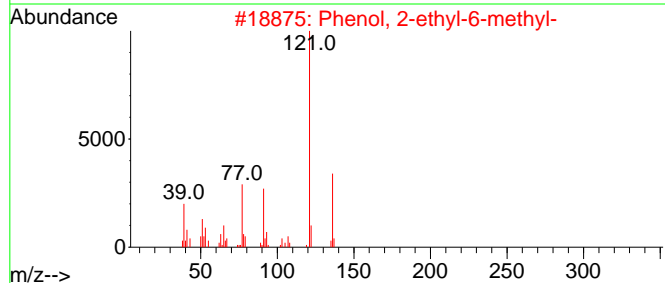
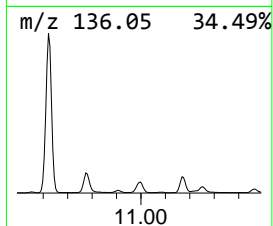
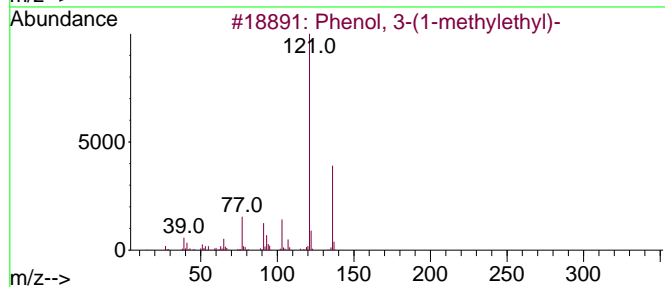
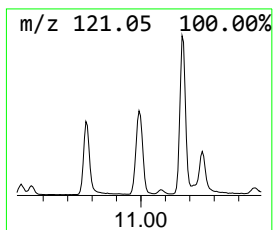
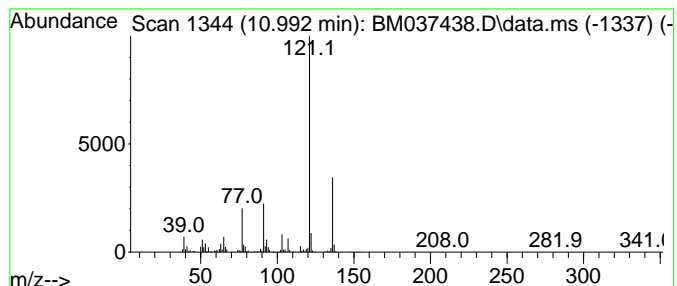
Quant Method : Z:\svoasrv\HPCHEM1\BNA_M\Methods\8270-BM102822.M
 Quant Title : ASP BNA STANDARDS FOR 5 POINT CALIBRATION

TIC Library : C:\Database\NIST20.L
 TIC Integration Parameters: LSCINT.P

 Peak Number 3 Phenol, 3-(1-methylethyl)- Concentration Rank 8

R.T.	EstConc	Area	Relative to ISTD	R.T.
10.992	6.84 ng	857324	Naphthalene-d8	10.622

Hit#	of	5	Tentative ID	MW	MolForm	CAS#	Qual
1			Phenol, 3-(1-methylethyl)-	136	C9H12O	000618-45-1	91
2			Phenol, 2-ethyl-6-methyl-	136	C9H12O	001687-64-5	90
3			Phenol, 2-ethyl-5-methyl-	136	C9H12O	001687-61-2	90
4			Phenol, 3-ethyl-5-methyl-	136	C9H12O	000698-71-5	90
5			Phenol, 2-(1-methylethyl)-	136	C9H12O	000088-69-7	87



Data Path : Z:\svoasrv\HPCHEM1\BNA_M\Data\BM110922\
 Data File : BM037438.D
 Acq On : 09 Nov 2022 15:54
 Operator : CG/JU
 Sample : N5436-09 10X
 Misc :
 ALS Vial : 7 Sample Multiplier: 1

Instrument :
 BNA_M
 ClientSampleId :
 250FERRYBLVD-TFS-09

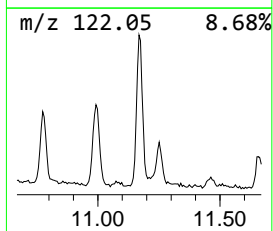
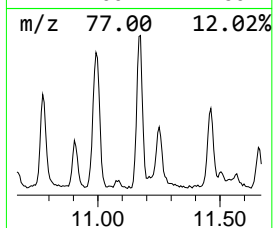
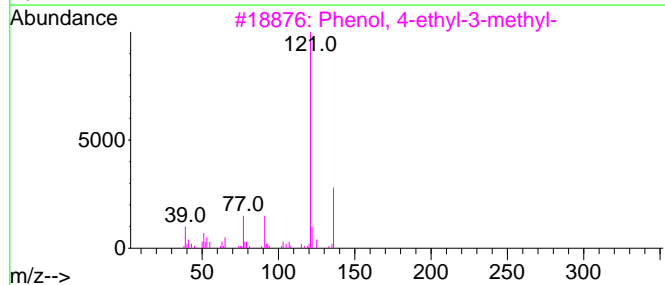
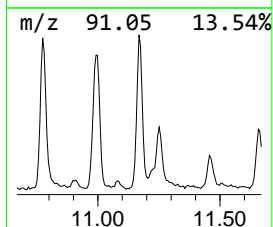
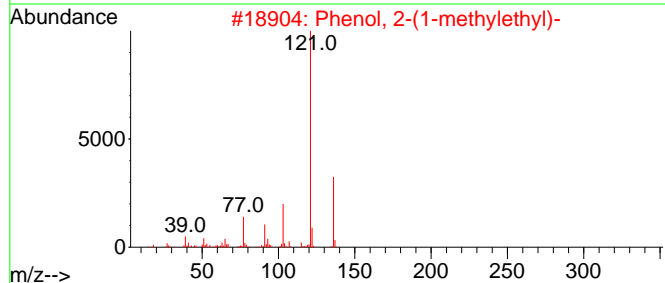
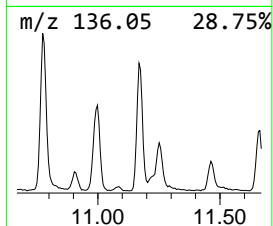
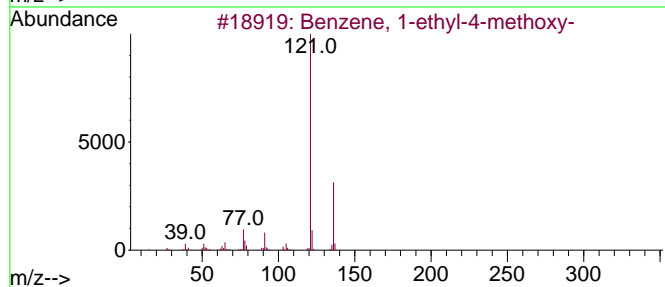
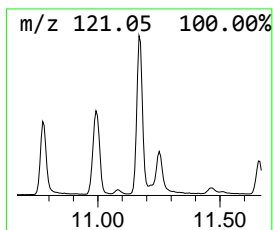
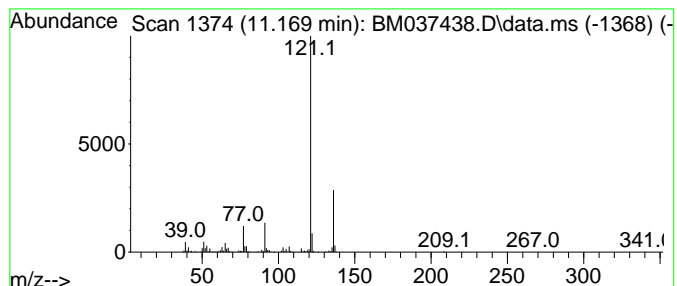
Quant Method : Z:\svoasrv\HPCHEM1\BNA_M\Methods\8270-BM102822.M
 Quant Title : ASP BNA STANDARDS FOR 5 POINT CALIBRATION

TIC Library : C:\Database\NIST20.L
 TIC Integration Parameters: LSCINT.P

 Peak Number 4 Benzene, 1-ethyl-4-methoxy- Concentration Rank 6

R.T.	EstConc	Area	Relative to ISTD	R.T.
11.169	8.65 ng	1083880	Naphthalene-d8	10.622

Hit#	of 5	Tentative ID	MW	MolForm	CAS#	Qual
1		Benzene, 1-ethyl-4-methoxy-	136	C9H12O	001515-95-3	91
2		Phenol, 2-(1-methylethyl)-	136	C9H12O	000088-69-7	91
3		Phenol, 4-ethyl-3-methyl-	136	C9H12O	001123-94-0	91
4		Phenol, 2-ethyl-5-methyl-	136	C9H12O	001687-61-2	91
5		p-Cumenol	136	C9H12O	000099-89-8	91



Data Path : Z:\svoasrv\HPCHEM1\BNA_M\Data\BM110922\
 Data File : BM037438.D
 Acq On : 09 Nov 2022 15:54
 Operator : CG/JU
 Sample : N5436-09 10X
 Misc :
 ALS Vial : 7 Sample Multiplier: 1

Instrument :
 BNA_M
 ClientSampleId :
 250FERRYBLVD-TFS-09

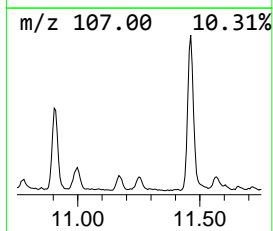
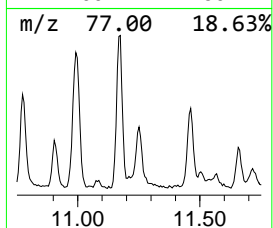
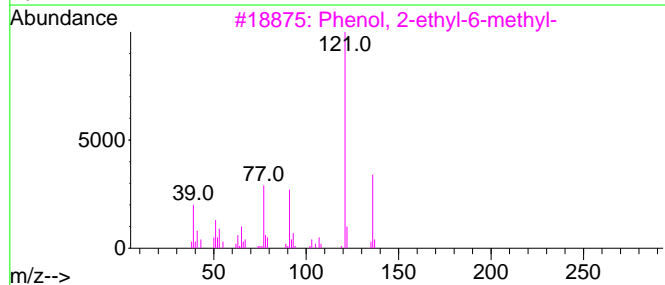
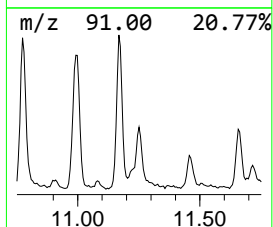
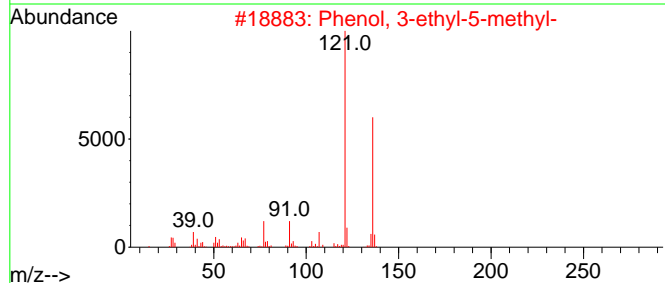
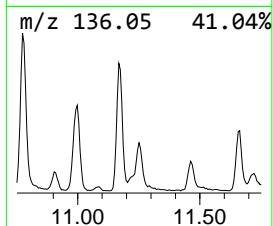
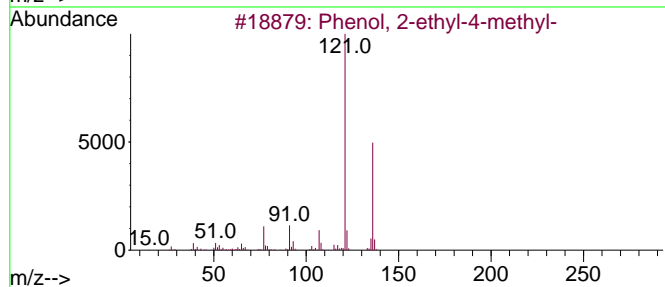
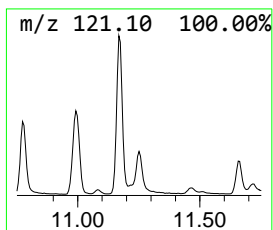
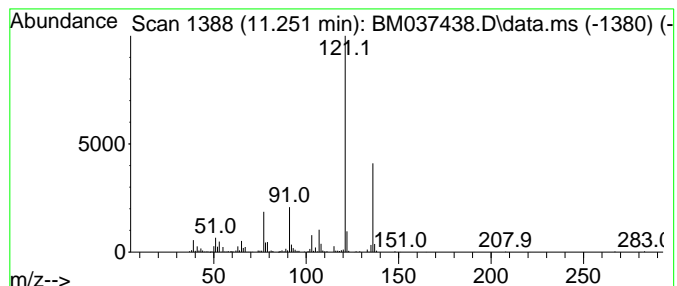
Quant Method : Z:\svoasrv\HPCHEM1\BNA_M\Methods\8270-BM102822.M
 Quant Title : ASP BNA STANDARDS FOR 5 POINT CALIBRATION

TIC Library : C:\Database\NIST20.L
 TIC Integration Parameters: LSCINT.P

 Peak Number 5 Phenol, 2-ethyl-4-methyl- Concentration Rank 15

R.T.	EstConc	Area	Relative to ISTD	R.T.
11.251	3.86 ng	484388	Naphthalene-d8	10.622

Hit#	of	5	Tentative ID	MW	MolForm	CAS#	Qual
1			Phenol, 2-ethyl-4-methyl-	136	C9H12O	003855-26-3	91
2			Phenol, 3-ethyl-5-methyl-	136	C9H12O	000698-71-5	91
3			Phenol, 2-ethyl-6-methyl-	136	C9H12O	001687-64-5	91
4			Phenol, 2-ethyl-5-methyl-	136	C9H12O	001687-61-2	87
5			2,4,6-Octatriene, 2,6-dimethyl-,...	136	C10H16	007216-56-0	86



Data Path : Z:\svoasrv\HPCHEM1\BNA_M\Data\BM110922\
 Data File : BM037438.D
 Acq On : 09 Nov 2022 15:54
 Operator : CG/JU
 Sample : N5436-09 10X
 Misc :
 ALS Vial : 7 Sample Multiplier: 1

Instrument :
 BNA_M
 ClientSampleId :
 250FERRYBLVD-TFS-09

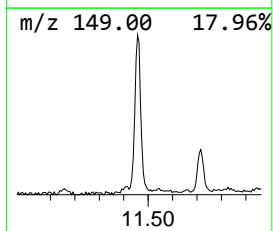
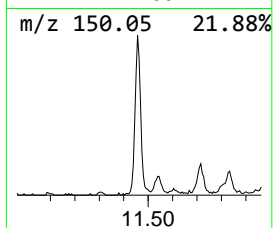
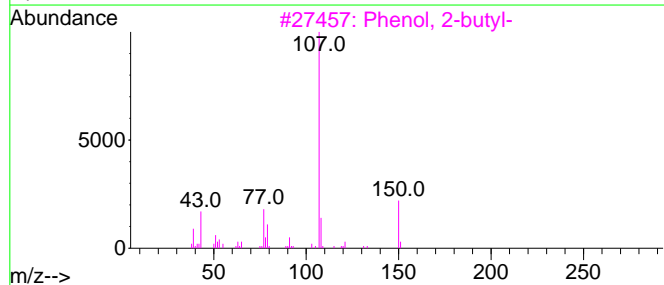
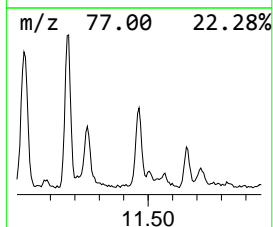
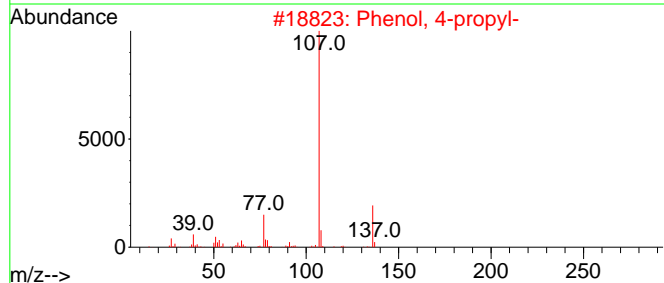
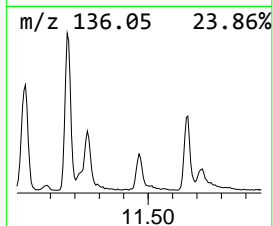
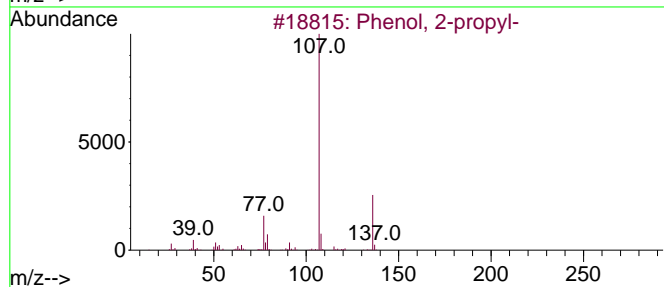
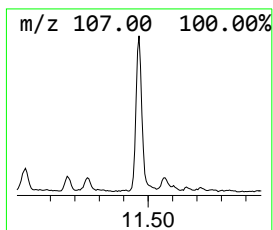
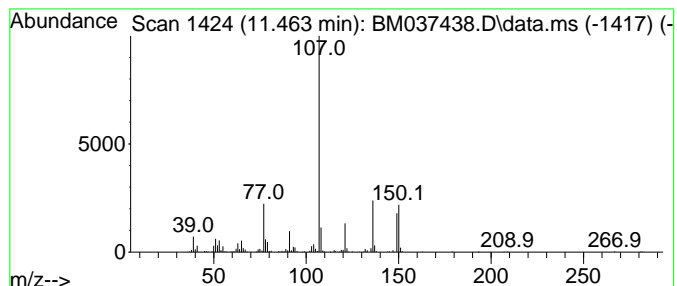
Quant Method : Z:\svoasrv\HPCHEM1\BNA_M\Methods\8270-BM102822.M
 Quant Title : ASP BNA STANDARDS FOR 5 POINT CALIBRATION

TIC Library : C:\Database\NIST20.L
 TIC Integration Parameters: LSCINT.P

 Peak Number 6 Phenol, 2-propyl- Concentration Rank 17

R.T.	EstConc	Area	Relative to ISTD	R.T.
11.463	3.57 ng	447444	Naphthalene-d8	10.622

Hit#	of 5	Tentative ID	MW	MolForm	CAS#	Qual
1		Phenol, 2-propyl-	136	C9H12O	000644-35-9	70
2		Phenol, 4-propyl-	136	C9H12O	000645-56-7	70
3		Phenol, 2-butyl-	150	C10H14O	003180-09-4	62
4		p-Hydroxyphenylacetone	150	C9H10O2	000770-39-8	62
5		Phenol, 4-(2-methylpropyl)-	150	C10H14O	004167-74-2	58



Data Path : Z:\svoasrv\HPCHEM1\BNA_M\Data\BM110922\
 Data File : BM037438.D
 Acq On : 09 Nov 2022 15:54
 Operator : CG/JU
 Sample : N5436-09 10X
 Misc :
 ALS Vial : 7 Sample Multiplier: 1

Instrument :
 BNA_M
 ClientSampleId :
 250FERRYBLVD-TFS-09

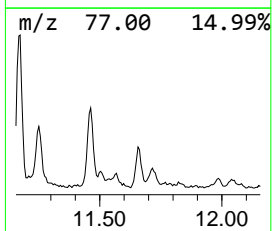
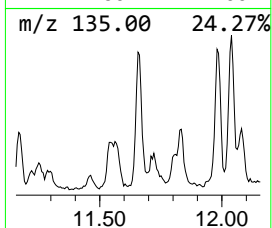
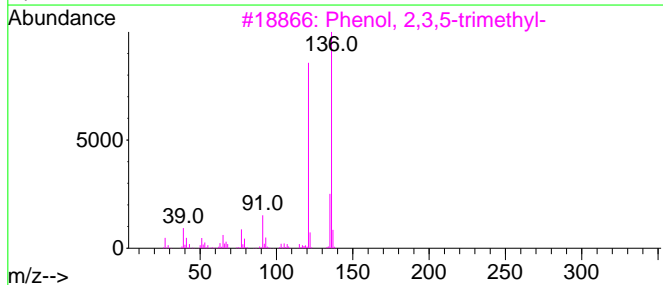
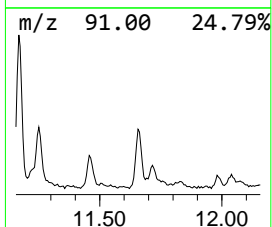
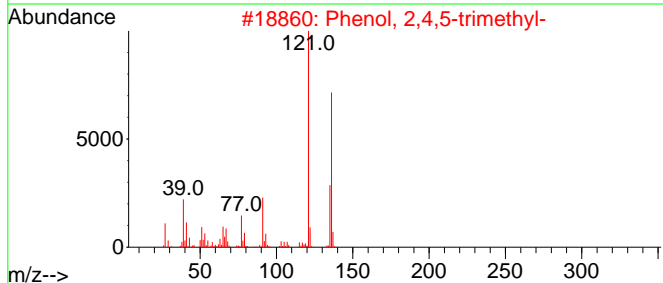
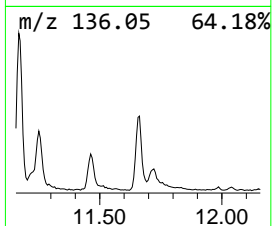
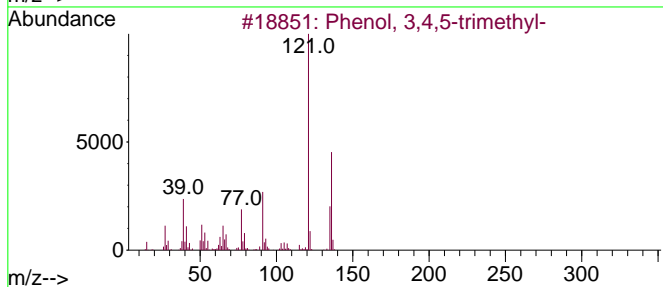
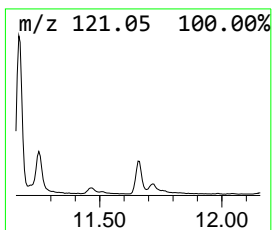
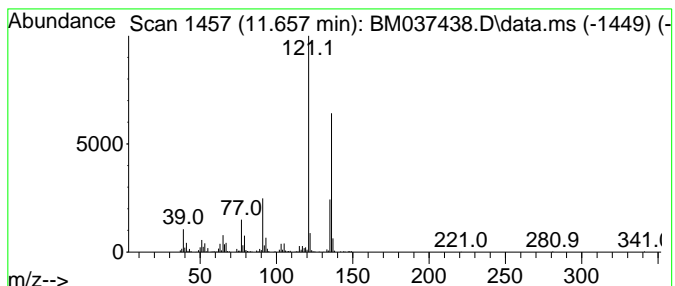
Quant Method : Z:\svoasrv\HPCHEM1\BNA_M\Methods\8270-BM102822.M
 Quant Title : ASP BNA STANDARDS FOR 5 POINT CALIBRATION

TIC Library : C:\Database\NIST20.L
 TIC Integration Parameters: LSCINT.P

 Peak Number 7 Phenol, 3,4,5-trimethyl- Concentration Rank 20

R.T.	EstConc	Area	Relative to ISTD	R.T.
11.657	3.07 ng	385502	Naphthalene-d8	10.622

Hit#	of	5	Tentative ID	MW	MolForm	CAS#	Qual
1			Phenol, 3,4,5-trimethyl-	136	C9H12O	000527-54-8	91
2			Phenol, 2,4,5-trimethyl-	136	C9H12O	000496-78-6	91
3			Phenol, 2,3,5-trimethyl-	136	C9H12O	000697-82-5	90
4			Phenol, 2,4,6-trimethyl-	136	C9H12O	000527-60-6	90
5			Phenol, 3,4,5-trimethyl-, methyl...	193	C11H15NO2	002686-99-9	90



Data Path : Z:\svoasrv\HPCHEM1\BNA_M\Data\BM110922\
 Data File : BM037438.D
 Acq On : 09 Nov 2022 15:54
 Operator : CG/JU
 Sample : N5436-09 10X
 Misc :
 ALS Vial : 7 Sample Multiplier: 1

Instrument :
 BNA_M
 ClientSampleId :
 250FERRYBLVD-TFS-09

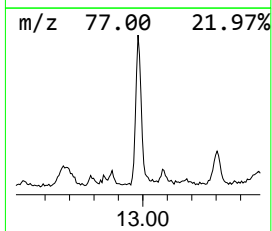
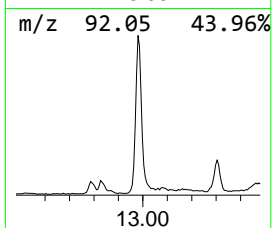
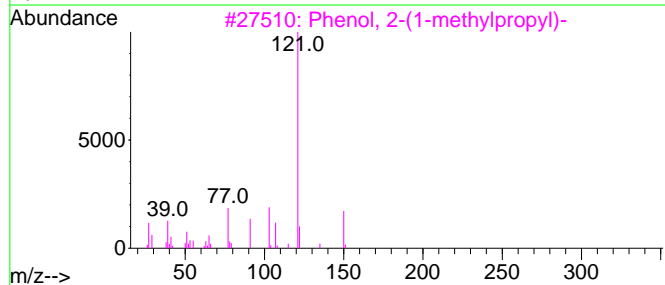
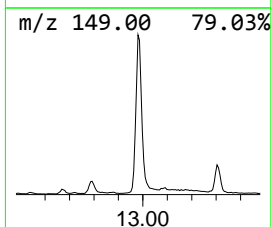
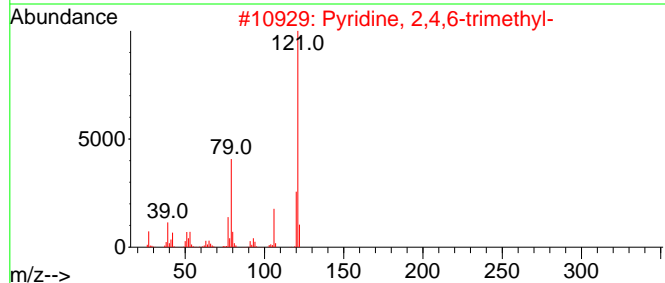
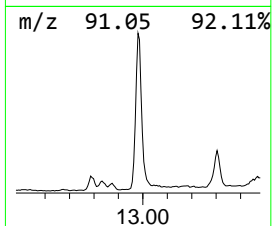
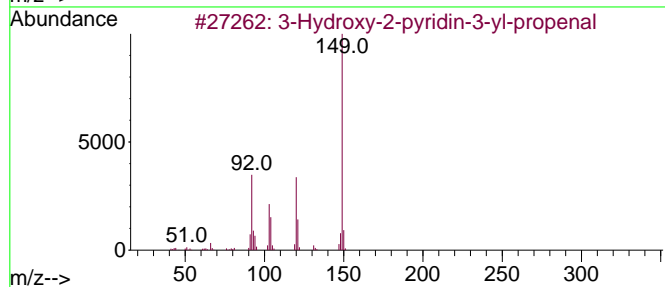
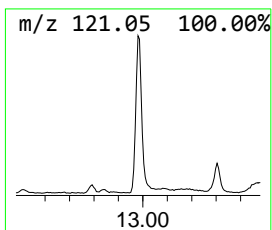
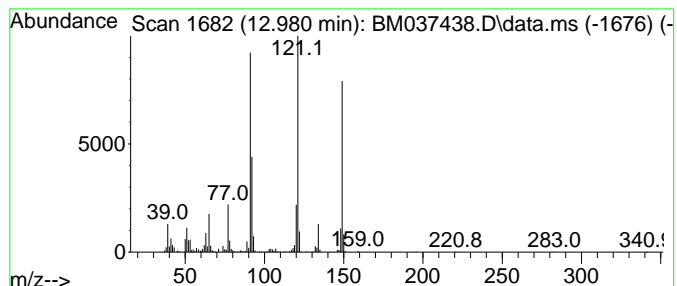
Quant Method : Z:\svoasrv\HPCHEM1\BNA_M\Methods\8270-BM102822.M
 Quant Title : ASP BNA STANDARDS FOR 5 POINT CALIBRATION

TIC Library : C:\Database\NIST20.L
 TIC Integration Parameters: LSCINT.P

 Peak Number 8 unknown12.980 Concentration Rank 11

R.T.	EstConc	Area	Relative to ISTD	R.T.
12.980	5.29 ng	1132390	Acenaphthene-d10	14.463

Hit#	of 5	Tentative ID	MW	MolForm	CAS#	Qual
1		3-Hydroxy-2-pyridin-3-yl-propenal	149	C8H7NO2	1000311-61-6	38
2		Pyridine, 2,4,6-trimethyl-	121	C8H11N	000108-75-8	30
3		Phenol, 2-(1-methylpropyl)-	150	C10H14O	000089-72-5	27
4		Toluene	92	C7H8	000108-88-3	25
5		Phenol, 4-(1-methylpropyl)-	150	C10H14O	000099-71-8	25



Data Path : Z:\svoasrv\HPCHEM1\BNA_M\Data\BM110922\
 Data File : BM037438.D
 Acq On : 09 Nov 2022 15:54
 Operator : CG/JU
 Sample : N5436-09 10X
 Misc :
 ALS Vial : 7 Sample Multiplier: 1

Instrument :
 BNA_M
 ClientSampleId :
 250FERRYBLVD-TFS-09

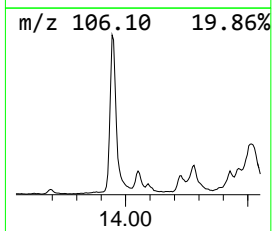
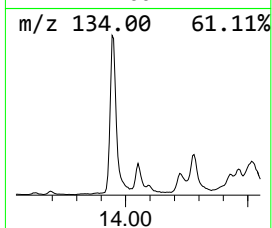
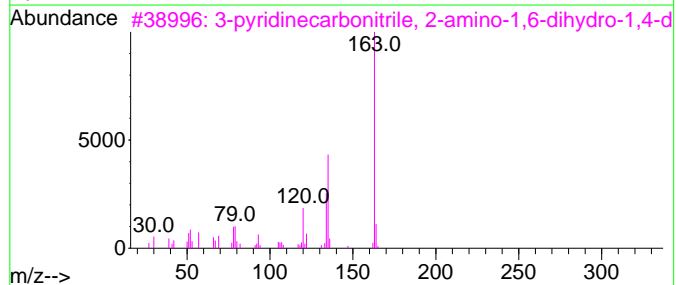
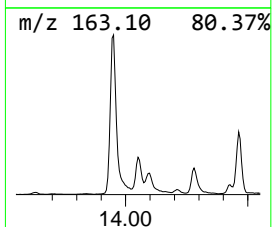
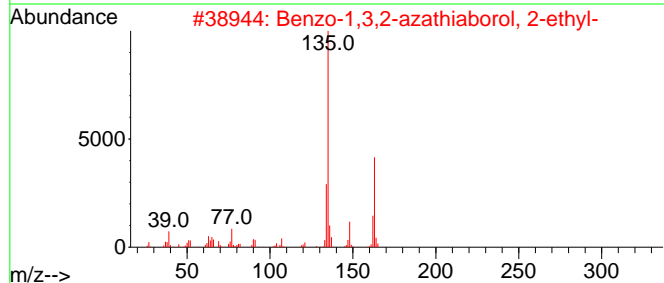
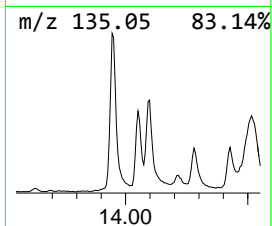
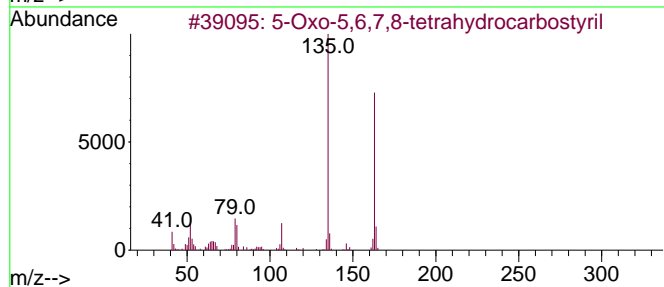
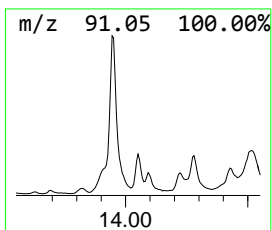
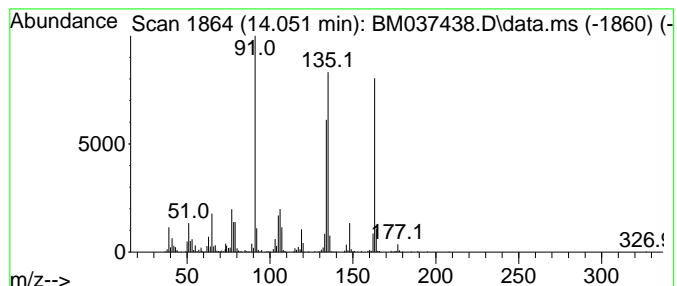
Quant Method : Z:\svoasrv\HPCHEM1\BNA_M\Methods\8270-BM102822.M
 Quant Title : ASP BNA STANDARDS FOR 5 POINT CALIBRATION

TIC Library : C:\Database\NIST20.L
 TIC Integration Parameters: LSCINT.P

 Peak Number 10 5-Oxo-5,6,7,8-tetrahydrocar... Concentration Rank 18

R.T.	EstConc	Area	Relative to ISTD	R.T.
14.051	3.30 ng	705673	Acenaphthene-d10	14.463

Hit#	of	5	Tentative ID	MW	MolForm	CAS#	Qual
1			5-Oxo-5,6,7,8-tetrahydrocarbostyryl	163	C9H9NO2	015450-69-8	58
2			Benzo-1,3,2-azathiaborol, 2-ethyl-	163	C8H10BNS	168064-64-0	53
3			3-pyridinecarbonitrile, 2-amino-...	163	C8H9N3O	1010404-44-3	53
4			5-(Trifluoromethyl)-2(1H)-pyridi...	163	C6H4F3NO	033252-63-0	49
5			6-tert-Butyl-2,4-dimethylphenol	178	C12H18O	001879-09-0	49



Data Path : Z:\svoasrv\HPCHEM1\BNA_M\Data\BM110922\
 Data File : BM037438.D
 Acq On : 09 Nov 2022 15:54
 Operator : CG/JU
 Sample : N5436-09 10X
 Misc :
 ALS Vial : 7 Sample Multiplier: 1

Instrument :
 BNA_M
 ClientSampleId :
 250FERRYBLVD-TFS-09

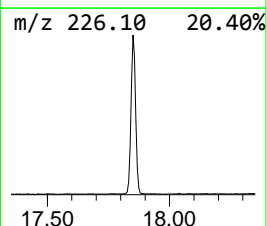
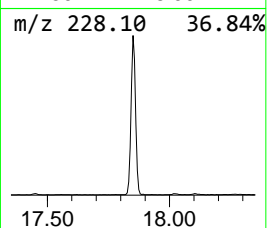
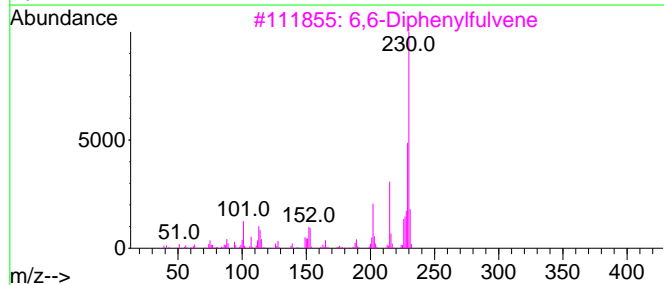
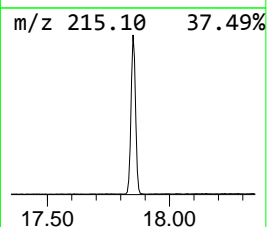
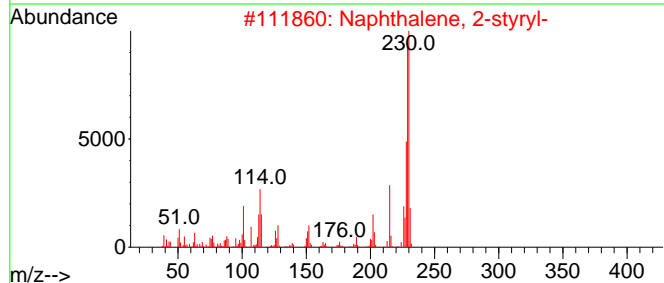
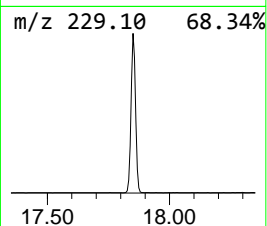
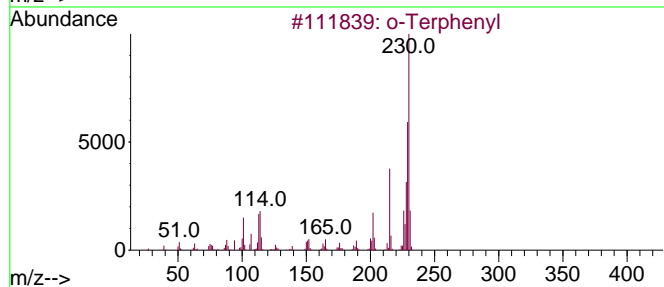
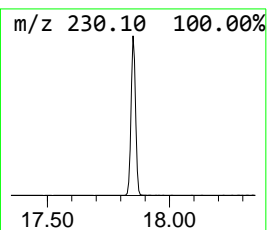
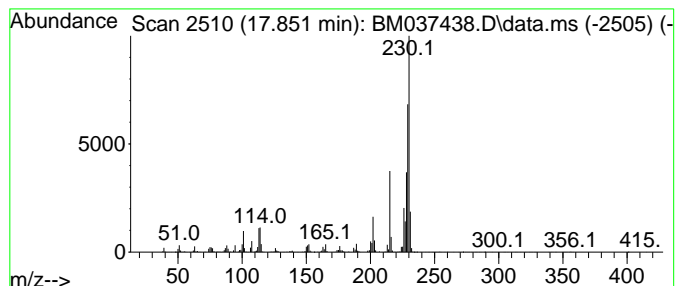
Quant Method : Z:\svoasrv\HPCHEM1\BNA_M\Methods\8270-BM102822.M
 Quant Title : ASP BNA STANDARDS FOR 5 POINT CALIBRATION

TIC Library : C:\Database\NIST20.L
 TIC Integration Parameters: LSCINT.P

 Peak Number 12 o-Terphenyl Concentration Rank 3

R.T.	EstConc	Area	Relative to ISTD	R.T.
17.851	13.78 ng	2665450	Phenanthrene-d10	17.203

Hit#	of 5	Tentative ID	MW	MolForm	CAS#	Qual
1		o-Terphenyl	230	C18H14	000084-15-1	98
2		Naphthalene, 2-styryl-	230	C18H14	002039-70-5	93
3		6,6-Diphenylfulvene	230	C18H14	002175-90-8	93
4		Pyrene, 1,3-dimethyl-	230	C18H14	064401-21-4	86
5		5,6-Dihydrochrysene	230	C18H14	002091-92-1	72



Data Path : Z:\svoasrv\HPCHEM1\BNA_M\Data\BM110922\
 Data File : BM037438.D
 Acq On : 09 Nov 2022 15:54
 Operator : CG/JU
 Sample : N5436-09 10X
 Misc :
 ALS Vial : 7 Sample Multiplier: 1

Instrument :
 BNA_M
 ClientSampleId :
 250FERRYBLVD-TFS-09

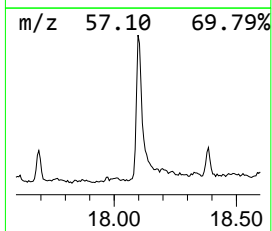
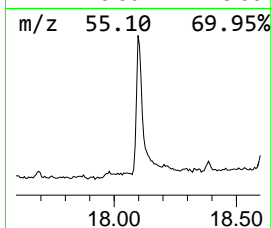
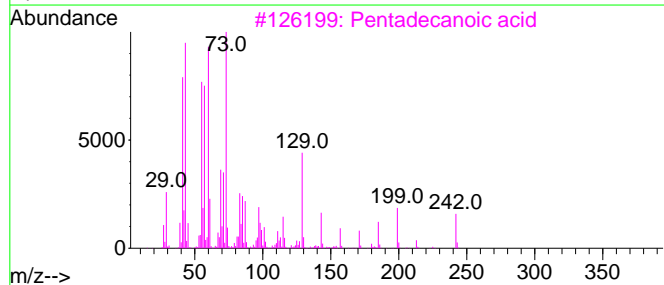
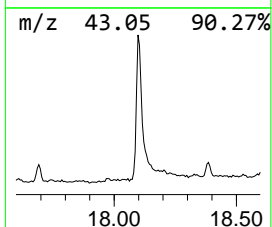
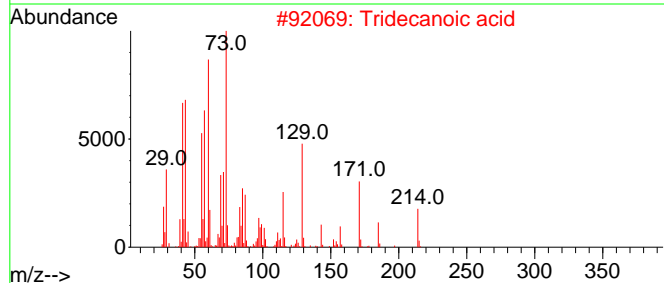
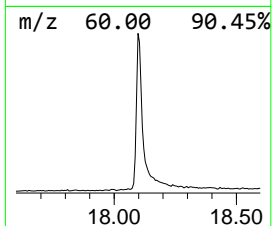
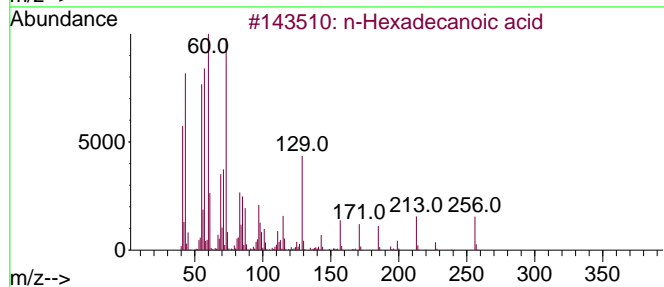
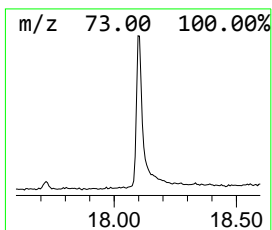
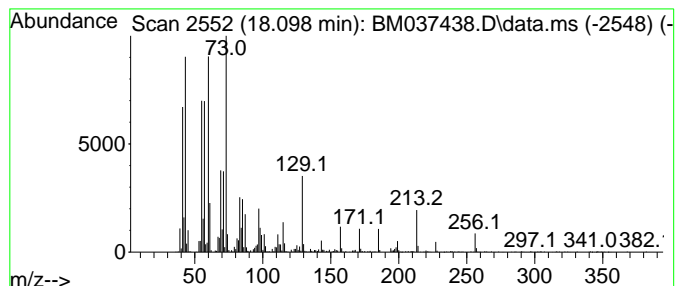
Quant Method : Z:\svoasrv\HPCHEM1\BNA_M\Methods\8270-BM102822.M
 Quant Title : ASP BNA STANDARDS FOR 5 POINT CALIBRATION

TIC Library : C:\Database\NIST20.L
 TIC Integration Parameters: LSCINT.P

 Peak Number 13 n-Hexadecanoic acid Concentration Rank 5

R.T.	EstConc	Area	Relative to ISTD	R.T.
18.098	9.86 ng	1907380	Phenanthrene-d10	17.203

Hit#	of 5	Tentative ID	MW	MolForm	CAS#	Qual
1		n-Hexadecanoic acid	256	C16H32O2	000057-10-3	99
2		Tridecanoic acid	214	C13H26O2	000638-53-9	94
3		Pentadecanoic acid	242	C15H30O2	001002-84-2	83
4		Octadecanoic acid	284	C18H36O2	000057-11-4	81
5		Tetradecanoic acid	228	C14H28O2	000544-63-8	68



Data Path : Z:\svoasrv\HPCHEM1\BNA_M\Data\BM110922\
 Data File : BM037438.D
 Acq On : 09 Nov 2022 15:54
 Operator : CG/JU
 Sample : N5436-09 10X
 Misc :
 ALS Vial : 7 Sample Multiplier: 1

Instrument :
 BNA_M
 ClientSampleId :
 250FERRYBLVD-TFS-09

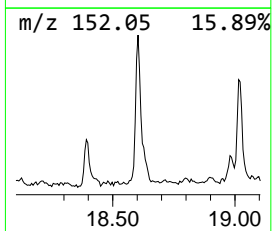
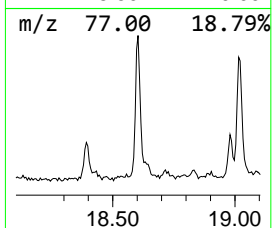
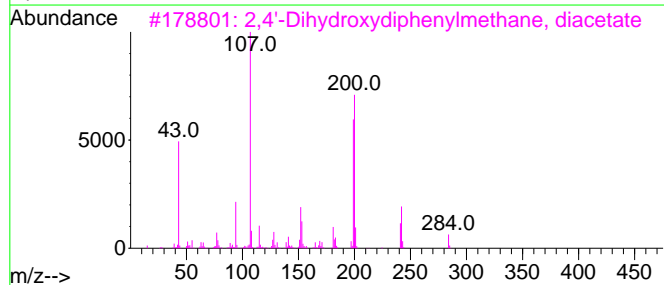
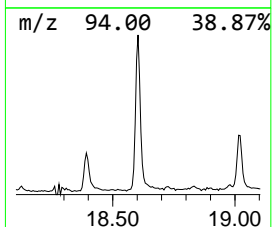
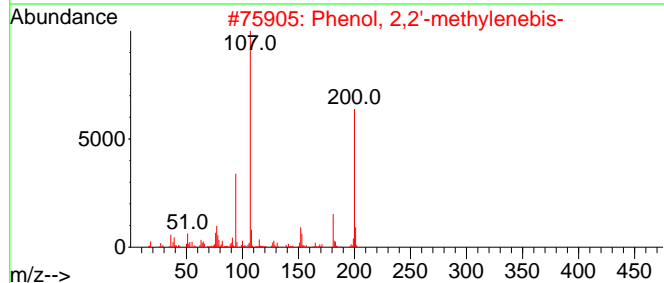
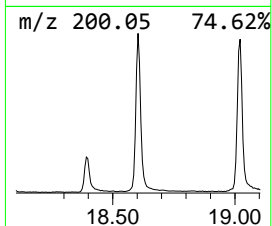
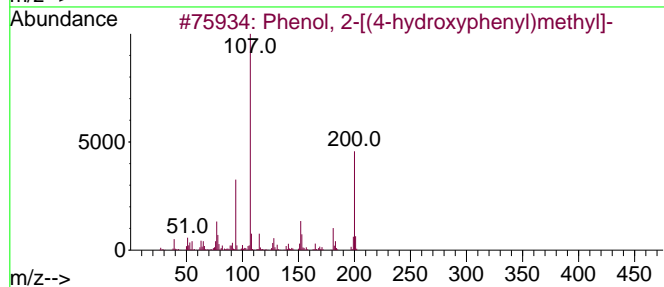
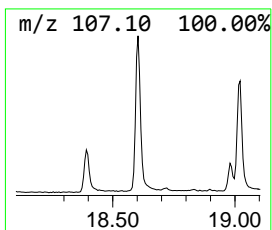
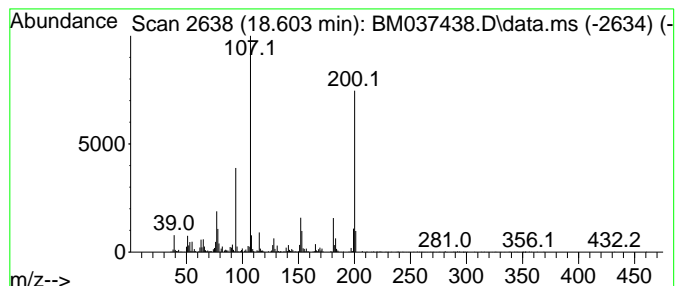
Quant Method : Z:\svoasrv\HPCHEM1\BNA_M\Methods\8270-BM102822.M
 Quant Title : ASP BNA STANDARDS FOR 5 POINT CALIBRATION

TIC Library : C:\Database\NIST20.L
 TIC Integration Parameters: LSCINT.P

 Peak Number 14 Phenol, 2-[(4-hydroxyphenyl)... Concentration Rank 12

R.T.	EstConc	Area	Relative to ISTD	R.T.
18.603	4.80 ng	928390	Phenanthrene-d10	17.203

Hit#	of	5	Tentative ID	MW	MolForm	CAS#	Qual
1			Phenol, 2-[(4-hydroxyphenyl)methyl]...	200	C13H12O2	002467-03-0	97
2			Phenol, 2,2'-methylenebis-	200	C13H12O2	002467-02-9	94
3			2,4'-Dihydroxydiphenylmethane, d...	284	C17H16O4	959033-36-4	80
4			Phenol, 4,4'-methylenebis-	200	C13H12O2	000620-92-8	72
5			2,2'-Methylenediphenol, acetate	242	C15H14O3	1000462-45-6	52



Data Path : Z:\svoasrv\HPCHEM1\BNA_M\Data\BM110922\
 Data File : BM037438.D
 Acq On : 09 Nov 2022 15:54
 Operator : CG/JU
 Sample : N5436-09 10X
 Misc :
 ALS Vial : 7 Sample Multiplier: 1

Instrument :
 BNA_M
 ClientSampleId :
 250FERRYBLVD-TFS-09

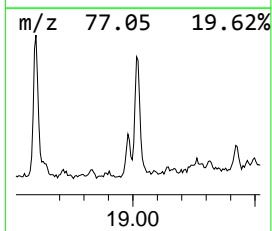
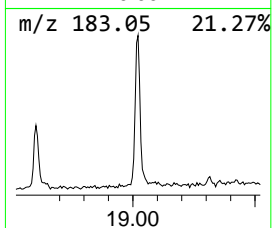
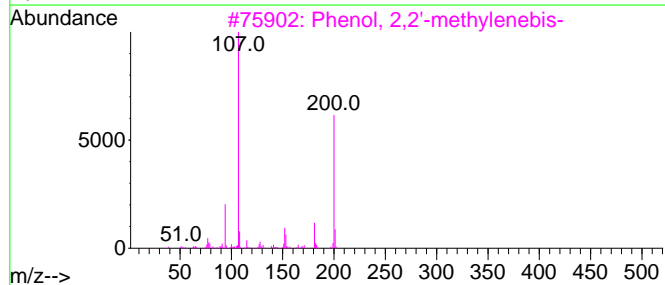
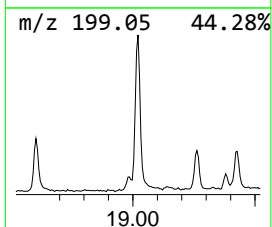
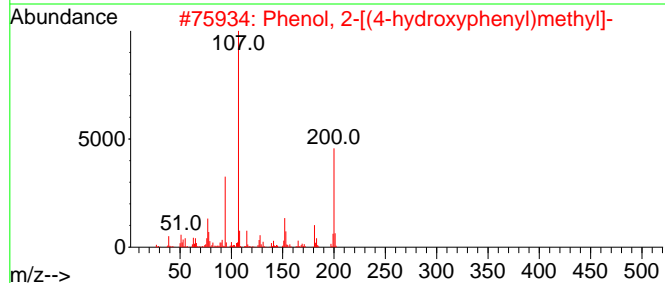
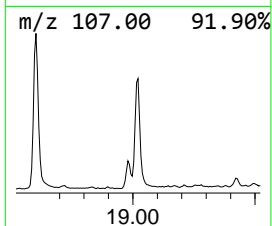
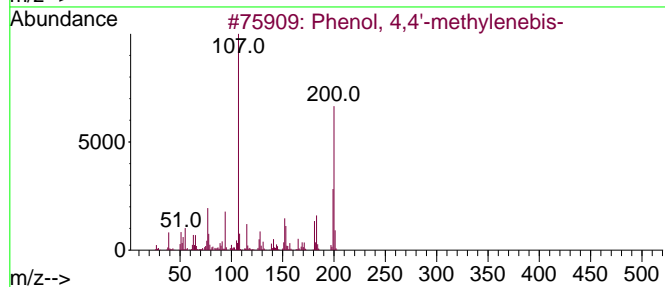
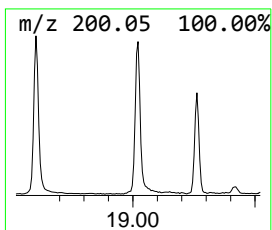
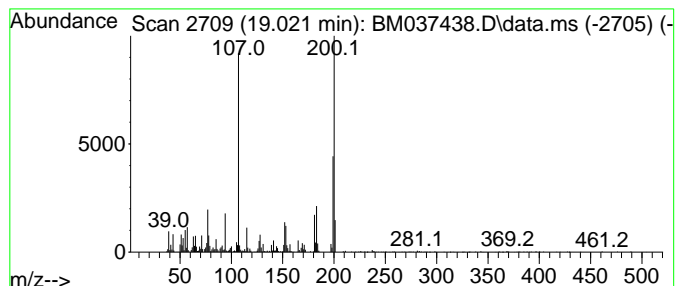
Quant Method : Z:\svoasrv\HPCHEM1\BNA_M\Methods\8270-BM102822.M
 Quant Title : ASP BNA STANDARDS FOR 5 POINT CALIBRATION

TIC Library : C:\Database\NIST20.L
 TIC Integration Parameters: LSCINT.P

 Peak Number 15 Phenol, 4,4'-methylenebis- Concentration Rank 10

R.T.	EstConc	Area	Relative to ISTD	R.T.
19.021	6.04 ng	1168960	Phenanthrene-d10	17.203

Hit#	of	5	Tentative ID	MW	MolForm	CAS#	Qual
1			Phenol, 4,4'-methylenebis-	200	C13H12O2	000620-92-8	98
2			Phenol, 2-[(4-hydroxyphenyl)meth...	200	C13H12O2	002467-03-0	89
3			Phenol, 2,2'-methylenebis-	200	C13H12O2	002467-02-9	81
4			Bisphenol F, acetate	242	C15H14O3	035250-15-8	68
5			Bisphenol F, 2-methylpropionate	270	C17H18O3	1000462-19-4	64



Data Path : Z:\svoasrv\HPCHEM1\BNA_M\Data\BM110922\
 Data File : BM037438.D
 Acq On : 09 Nov 2022 15:54
 Operator : CG/JU
 Sample : N5436-09 10X
 Misc :
 ALS Vial : 7 Sample Multiplier: 1

Instrument :
 BNA_M
 ClientSampleId :
 250FERRYBLVD-TFS-09

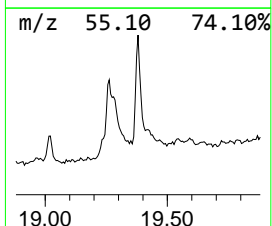
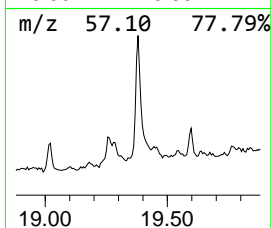
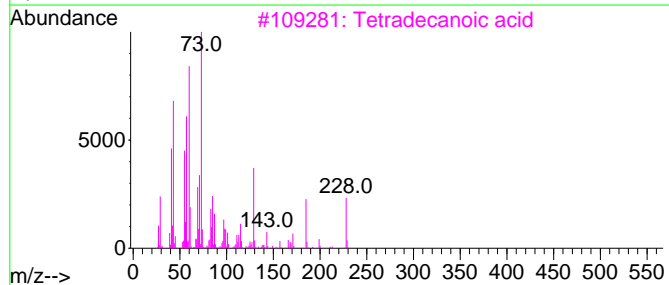
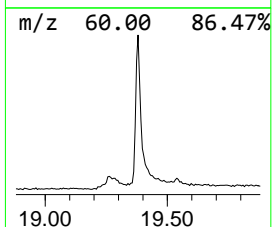
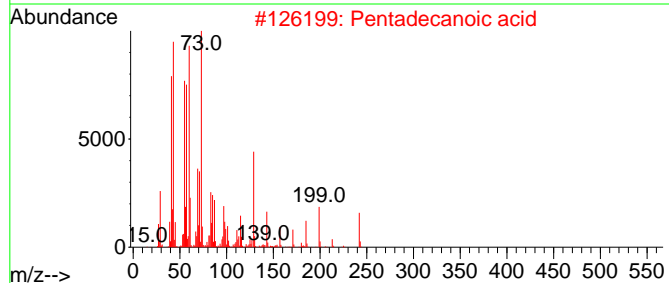
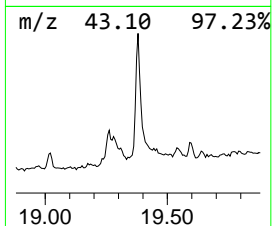
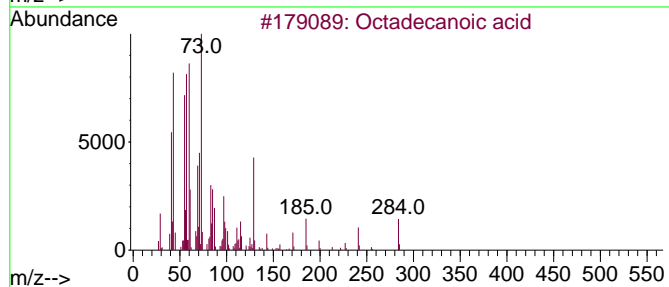
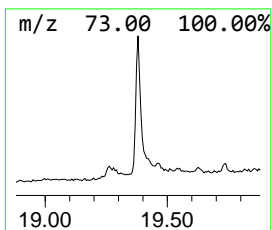
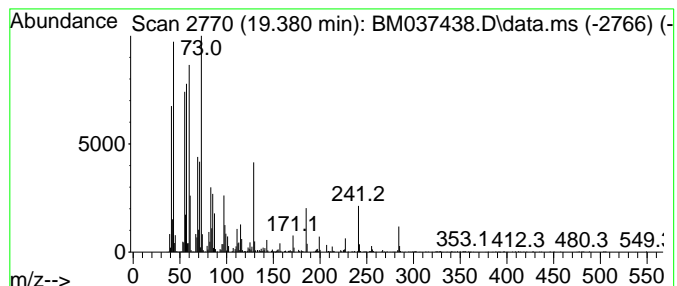
Quant Method : Z:\svoasrv\HPCHEM1\BNA_M\Methods\8270-BM102822.M
 Quant Title : ASP BNA STANDARDS FOR 5 POINT CALIBRATION

TIC Library : C:\Database\NIST20.L
 TIC Integration Parameters: LSCINT.P

 Peak Number 16 Octadecanoic acid Concentration Rank 16

R.T.	EstConc	Area	Relative to ISTD	R.T.
19.380	3.66 ng	1155440	Chrysene-d12	21.386

Hit#	of 5	Tentative ID	MW	MolForm	CAS#	Qual
1		Octadecanoic acid	284	C18H36O2	000057-11-4	99
2		Pentadecanoic acid	242	C15H30O2	001002-84-2	90
3		Tetradecanoic acid	228	C14H28O2	000544-63-8	74
4		Tridecanoic acid	214	C13H26O2	000638-53-9	59
5		n-Decanoic acid	172	C10H20O2	000334-48-5	58



Data Path : Z:\svoasrv\HPCHEM1\BNA_M\Data\BM110922\
 Data File : BM037438.D
 Acq On : 09 Nov 2022 15:54
 Operator : CG/JU
 Sample : N5436-09 10X
 Misc :
 ALS Vial : 7 Sample Multiplier: 1

Instrument :
 BNA_M
 ClientSampleId :
 250FERRYBLVD-TFS-09

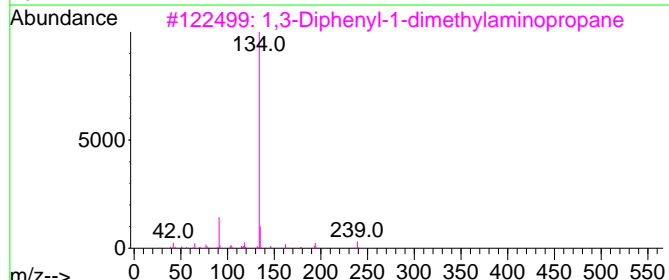
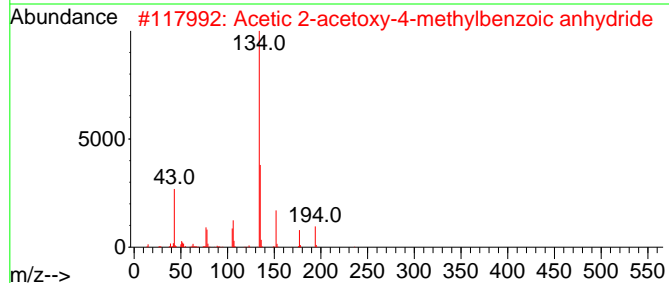
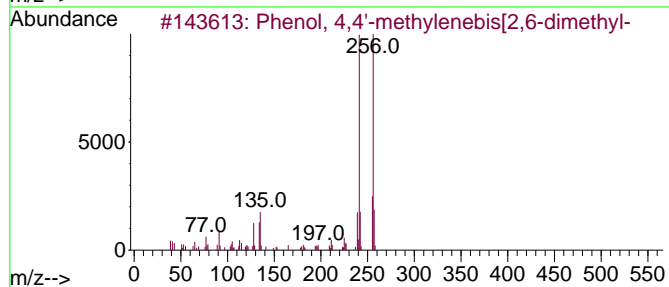
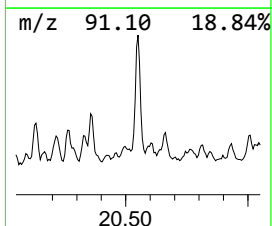
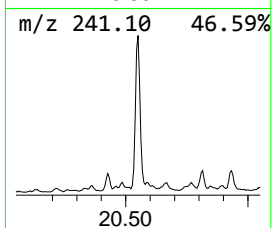
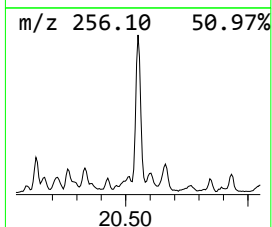
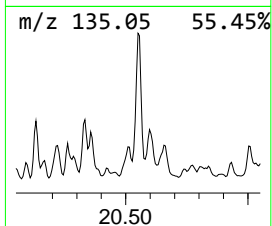
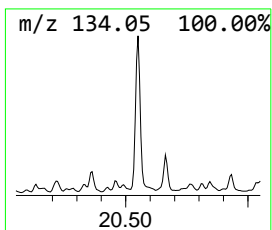
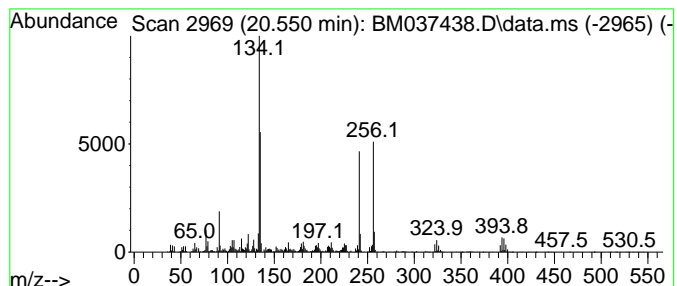
Quant Method : Z:\svoasrv\HPCHEM1\BNA_M\Methods\8270-BM102822.M
 Quant Title : ASP BNA STANDARDS FOR 5 POINT CALIBRATION

TIC Library : C:\Database\NIST20.L
 TIC Integration Parameters: LSCINT.P

 Peak Number 17 unknown20.550 Concentration Rank 9

R.T.	EstConc	Area	Relative to ISTD	R.T.
20.550	6.71 ng	2116700	Chrysene-d12	21.386

Hit#	of	5	Tentative ID	MW	MolForm	CAS#	Qual
1			Phenol, 4,4'-methylenebis[2,6-di...	256	C17H20O2	005384-21-4	38
2			Acetic 2-acetoxy-4-methylbenzoic...	236	C12H12O5	1000385-82-7	38
3			1,3-Diphenyl-1-dimethylaminopropane	239	C17H21N	108971-44-4	30
4			5-Amino-2-chloro-N-(2,4-dimethyl...	324	C15H17ClN2O2S	1460264-25-8	27
5			Lefetamine	225	C16H19N	007262-75-1	27



Data Path : Z:\svoasrv\HPCHEM1\BNA_M\Data\BM110922\
 Data File : BM037438.D
 Acq On : 09 Nov 2022 15:54
 Operator : CG/JU
 Sample : N5436-09 10X
 Misc :
 ALS Vial : 7 Sample Multiplier: 1

Instrument :
 BNA_M
 ClientSampleId :
 250FERRYBLVD-TFS-09

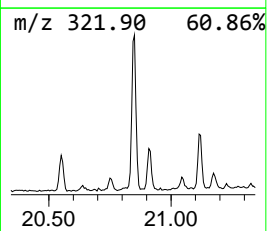
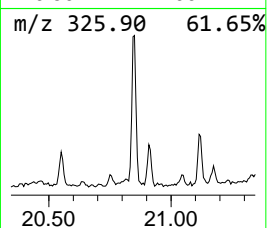
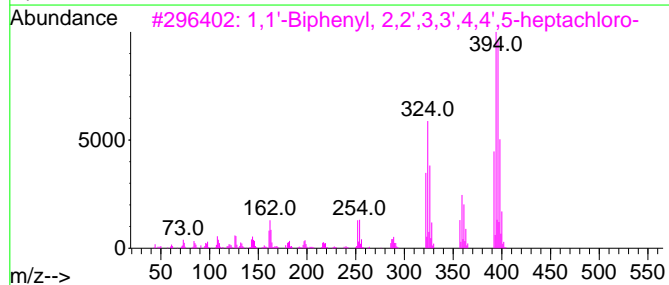
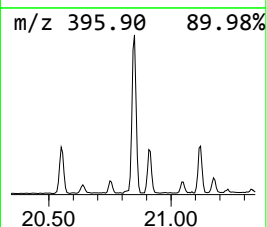
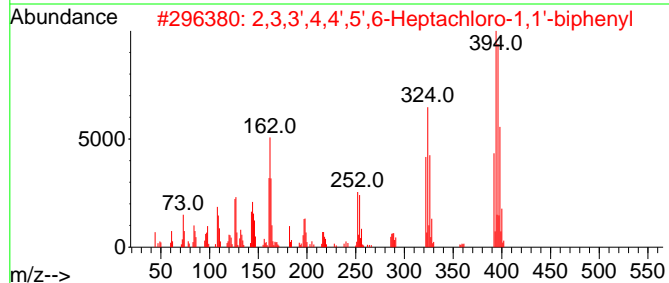
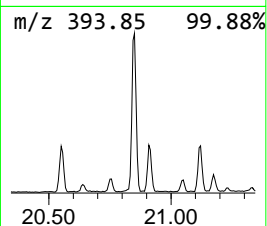
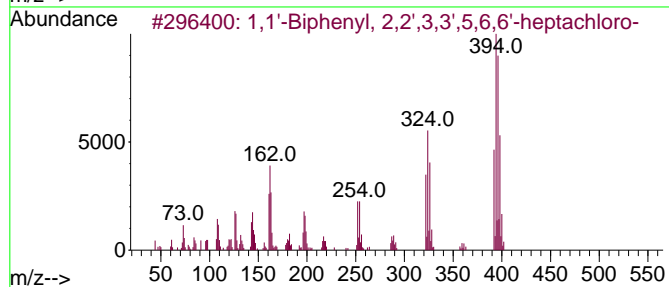
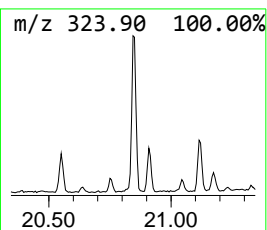
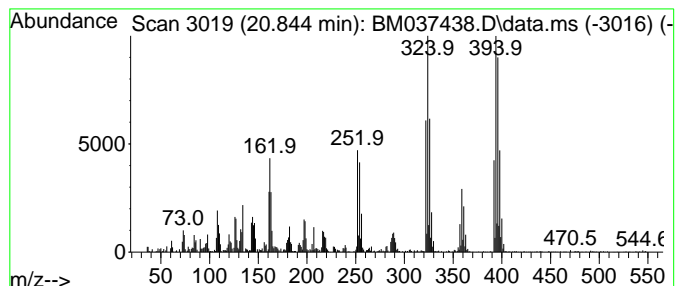
Quant Method : Z:\svoasrv\HPCHEM1\BNA_M\Methods\8270-BM102822.M
 Quant Title : ASP BNA STANDARDS FOR 5 POINT CALIBRATION

TIC Library : C:\Database\NIST20.L
 TIC Integration Parameters: LSCINT.P

 Peak Number 18 1,1'-Biphenyl, 2,2',3,3',5,... Concentration Rank 19

R.T.	EstConc	Area	Relative to ISTD	R.T.
20.845	3.29 ng	1036970	Chrysene-d12	21.386

Hit#	of 5	Tentative ID	MW	MolForm	CAS#	Qual
1		1,1'-Biphenyl, 2,2',3,3',5,6,6'-...	392	C12H3Cl7	052663-64-6	99
2		2,3,3',4,4',5',6-Heptachloro-1,1...	392	C12H3Cl7	074472-50-7	99
3		1,1'-Biphenyl, 2,2',3,3',4,4',5-...	392	C12H3Cl7	035065-30-6	99
4		1,1'-Biphenyl, 2,3,3',4,4',5,5'-...	392	C12H3Cl7	039635-31-9	99
5		2,2',3,4,4',6,6'-Heptachloro-1,1...	392	C12H3Cl7	074472-48-3	99



Data Path : Z:\svoasrv\HPCHEM1\BNA_M\Data\BM110922\
 Data File : BM037438.D
 Acq On : 09 Nov 2022 15:54
 Operator : CG/JU
 Sample : N5436-09 10X
 Misc :
 ALS Vial : 7 Sample Multiplier: 1

Instrument :
 BNA_M
 ClientSampleId :
 250FERRYBLVD-TFS-09

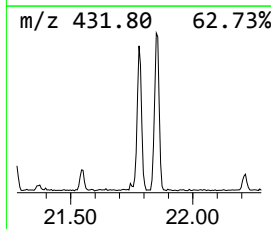
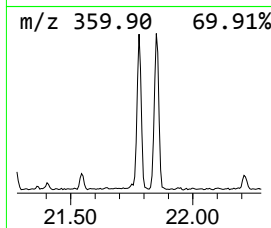
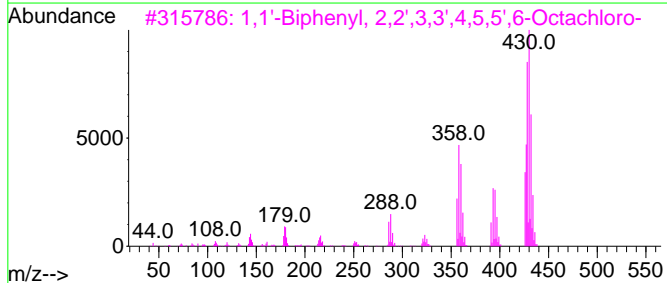
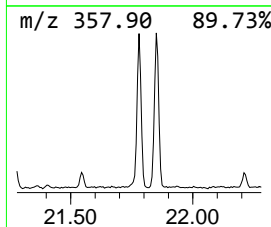
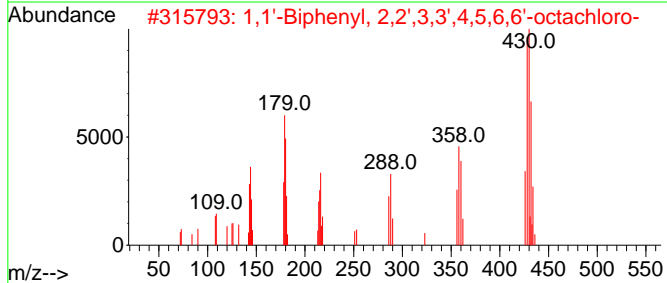
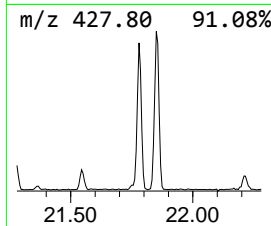
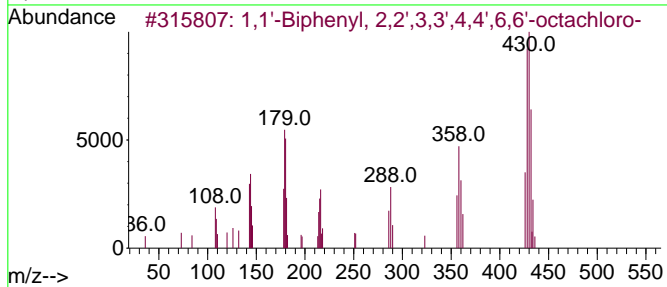
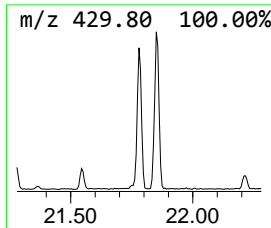
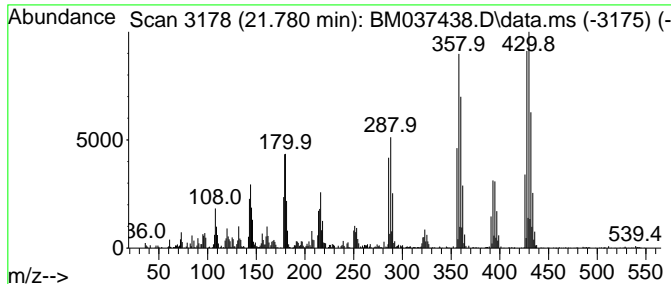
Quant Method : Z:\svoasrv\HPCHEM1\BNA_M\Methods\8270-BM102822.M
 Quant Title : ASP BNA STANDARDS FOR 5 POINT CALIBRATION

TIC Library : C:\Database\NIST20.L
 TIC Integration Parameters: LSCINT.P

 Peak Number 19 1,1'-Biphenyl, 2,2',3,3',4,... Concentration Rank 13

R.T.	EstConc	Area	Relative to ISTD	R.T.
21.780	4.78 ng	1506450	Chrysene-d12	21.386

Hit#	of 5	Tentative ID	MW	MolForm	CAS#	Qual
1		1,1'-Biphenyl, 2,2',3,3',4,4',6,...	426	C12H2Cl8	033091-17-7	99
2		1,1'-Biphenyl, 2,2',3,3',4,5,6,6...	426	C12H2Cl8	052663-73-7	99
3		1,1'-Biphenyl, 2,2',3,3',4,5,5',...	426	C12H2Cl8	068194-17-2	99
4		2,2',3,4,4',5,5',6-Octachloro-1,...	426	C12H2Cl8	052663-76-0	99
5		1,1'-Biphenyl, 2,2',3,3',4,4',5,...	426	C12H2Cl8	035694-08-7	99



Data Path : Z:\svoasrv\HPCHEM1\BNA_M\Data\BM110922\
 Data File : BM037438.D
 Acq On : 09 Nov 2022 15:54
 Operator : CG/JU
 Sample : N5436-09 10X
 Misc :
 ALS Vial : 7 Sample Multiplier: 1

Instrument :
 BNA_M
 ClientSampleId :
 250FERRYBLVD-TFS-09

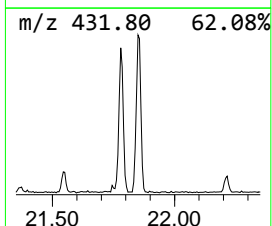
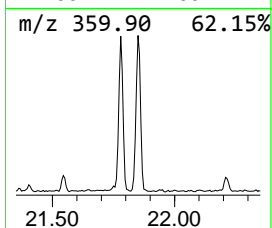
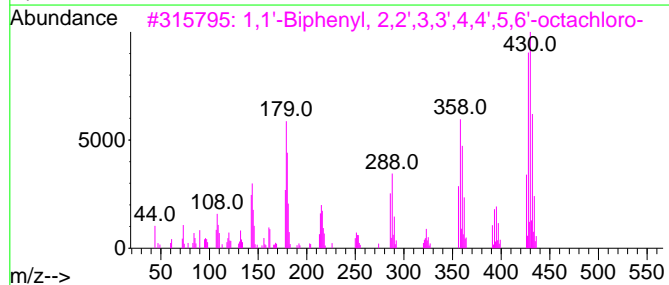
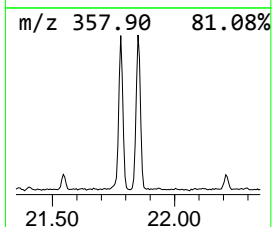
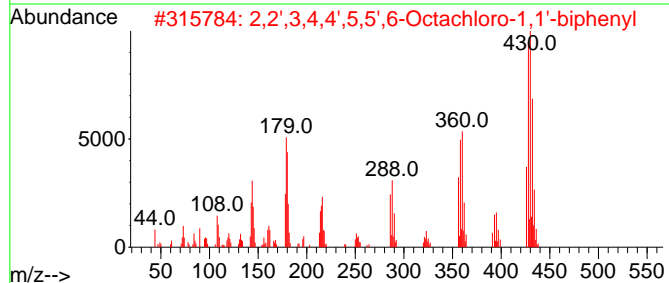
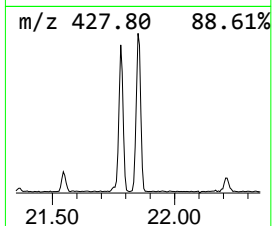
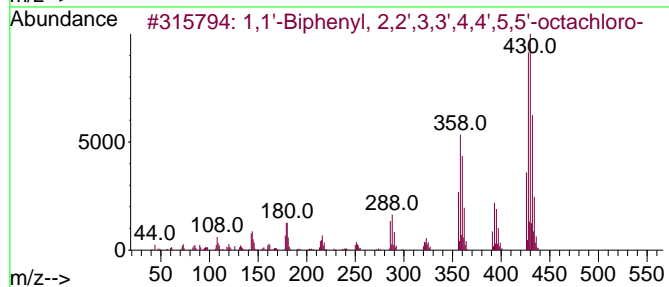
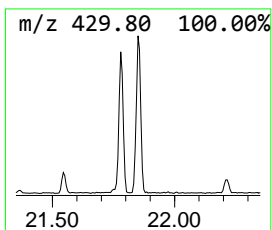
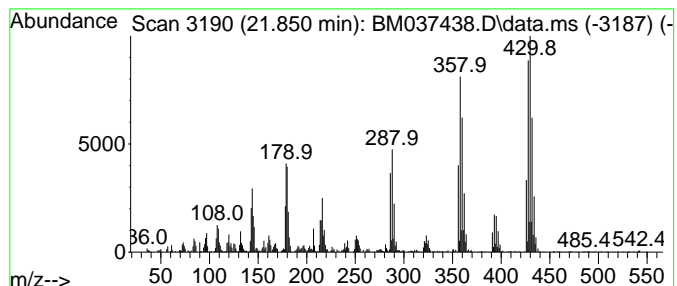
Quant Method : Z:\svoasrv\HPCHEM1\BNA_M\Methods\8270-BM102822.M
 Quant Title : ASP BNA STANDARDS FOR 5 POINT CALIBRATION

TIC Library : C:\Database\NIST20.L
 TIC Integration Parameters: LSCINT.P

 Peak Number 20 1,1'-Biphenyl, 2,2',3,3',4,... Concentration Rank 14

R.T.	EstConc	Area	Relative to ISTD	R.T.
21.850	4.06 ng	1278640	Chrysene-d12	21.386

Hit#	of 5	Tentative ID	MW	MolForm	CAS#	Qual
1		1,1'-Biphenyl, 2,2',3,3',4,4',5,...	426	C12H2Cl8	035694-08-7	99
2		2,2',3,4,4',5,5',6-Octachloro-1,...	426	C12H2Cl8	052663-76-0	99
3		1,1'-Biphenyl, 2,2',3,3',4,4',5,...	426	C12H2Cl8	042740-50-1	99
4		1,1'-Biphenyl, 2,2',3,3',4,4',6,...	426	C12H2Cl8	033091-17-7	99
5		1,1'-Biphenyl, 2,2',3,3',5,5',6,...	426	C12H2Cl8	002136-99-4	99



Data Path : Z:\svoasrv\HPCHEM1\BNA_M\Data\BM110922\
 Data File : BM037438.D
 Acq On : 09 Nov 2022 15:54
 Operator : CG/JU
 Sample : N5436-09 10X
 Misc :
 ALS Vial : 7 Sample Multiplier: 1

Instrument :
 BNA_M
ClientSampleId :
 250FERRYBLVD-TFS-09

Quant Method : Z:\svoasrv\HPCHEM1\BNA_M\Methods\8270-BM102822.M
 Quant Title : ASP BNA STANDARDS FOR 5 POINT CALIBRATION

TIC Library : C:\Database\NIST0.L
 TIC Integration Parameters: LSCINT.P

TIC Top Hit name	RT	EstConc	Units	Response	--Internal Standard--			
					#	RT	Resp	Conc
Phenol, 4-ethyl-	10.063	37.0	ng	4638490	2	10.622	2507340	20.0
Phenol, 2,4,6-t...	10.775	7.7	ng	964309	2	10.622	2507340	20.0
Phenol, 3-(1-me...	10.992	6.8	ng	857324	2	10.622	2507340	20.0
Benzene, 1-ethy...	11.169	8.7	ng	1083880	2	10.622	2507340	20.0
Phenol, 2-ethyl...	11.251	3.9	ng	484388	2	10.622	2507340	20.0
Phenol, 2-propyl-	11.463	3.6	ng	447444	2	10.622	2507340	20.0
Phenol, 3,4,5-t...	11.657	3.1	ng	385502	2	10.622	2507340	20.0
unknown12.980	12.980	5.3	ng	1132390	3	14.463	4279640	20.0
5-Oxo-5,6,7,8-t...	14.051	3.3	ng	705673	3	14.463	4279640	20.0
o-Terphenyl	17.851	13.8	ng	2665450	4	17.203	3868710	20.0
n-Hexadecanoic ...	18.098	9.9	ng	1907380	4	17.203	3868710	20.0
Phenol, 2-[(4-h...	18.603	4.8	ng	928390	4	17.203	3868710	20.0
Phenol, 4,4'-me...	19.021	6.0	ng	1168960	4	17.203	3868710	20.0
Octadecanoic acid	19.380	3.7	ng	1155440	5	21.386	6306230	20.0
unknown20.550	20.550	6.7	ng	2116700	5	21.386	6306230	20.0
1,1'-Biphenyl, ...	20.845	3.3	ng	1036970	5	21.386	6306230	20.0
1,1'-Biphenyl, ...	21.780	4.8	ng	1506450	5	21.386	6306230	20.0
1,1'-Biphenyl, ...	21.850	4.1	ng	1278640	5	21.386	6306230	20.0