

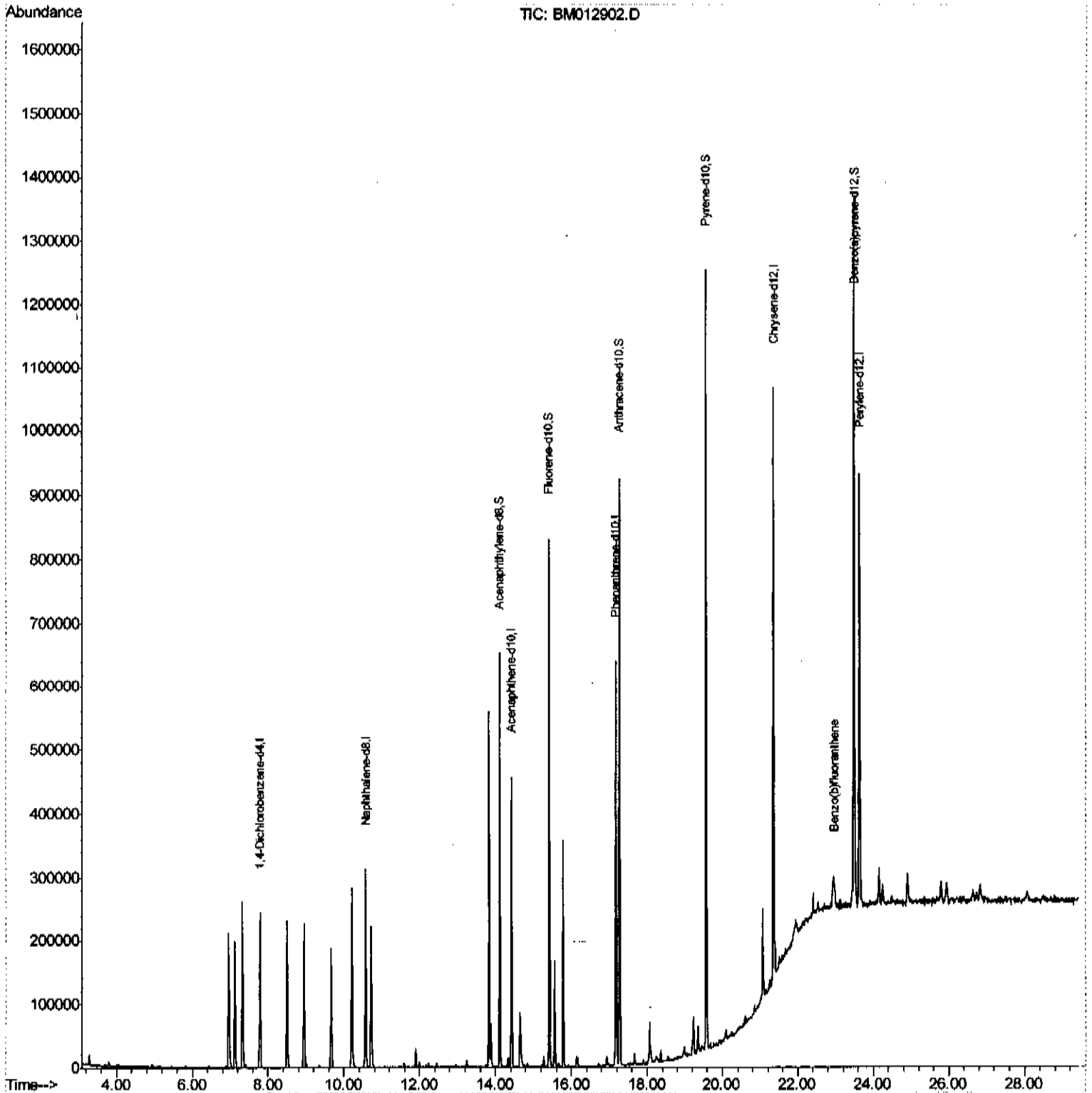
Data Path : Z:\HPCHEM1\BNA M\DATA\BM111017\
Data File : BM012902.D
Acq On : 11 Nov 2017 15:16
Operator : SJ/JU
Sample : I6319-07
Misc :
ALS Vial : 10 Sample Multiplier: 1

Instrument :
BNA_M
ClientSampled :
DAHL2

Manual Integrations
APPROVED

SOHIL
11/13/2017 4:50:59 PM

Quant Time: Nov 13 01:37:23 2017
Quant Method : Z:\HPCHEM1\BNA M\METHODS\SOM-EPA-BM111017MA.M
Quant Title : SVOA CALIBRATION
OLast Update : Mon Nov 13 01:07:29 2017
Response via : Initial Calibration

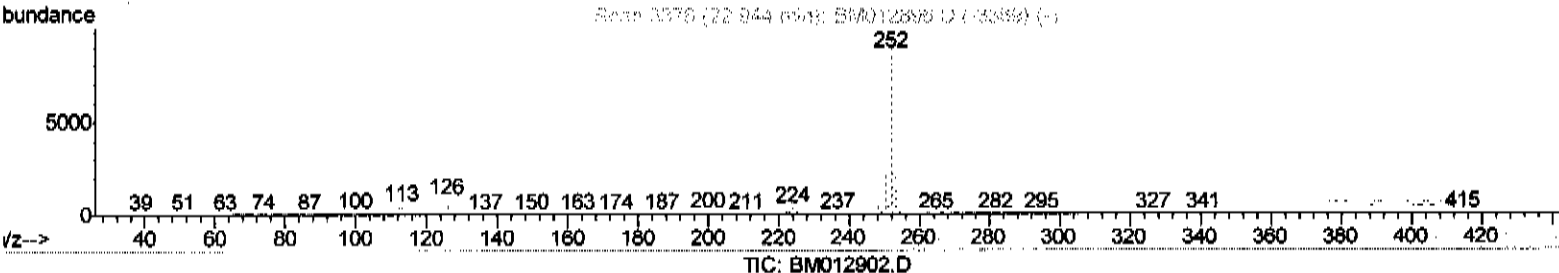
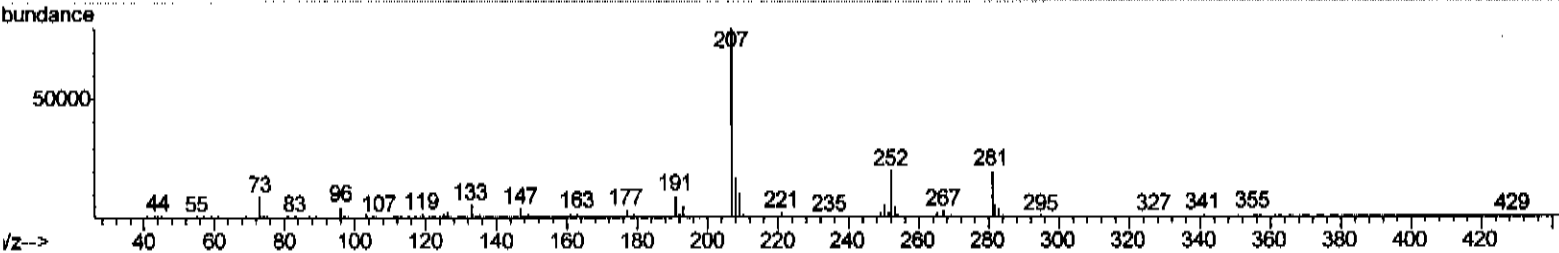
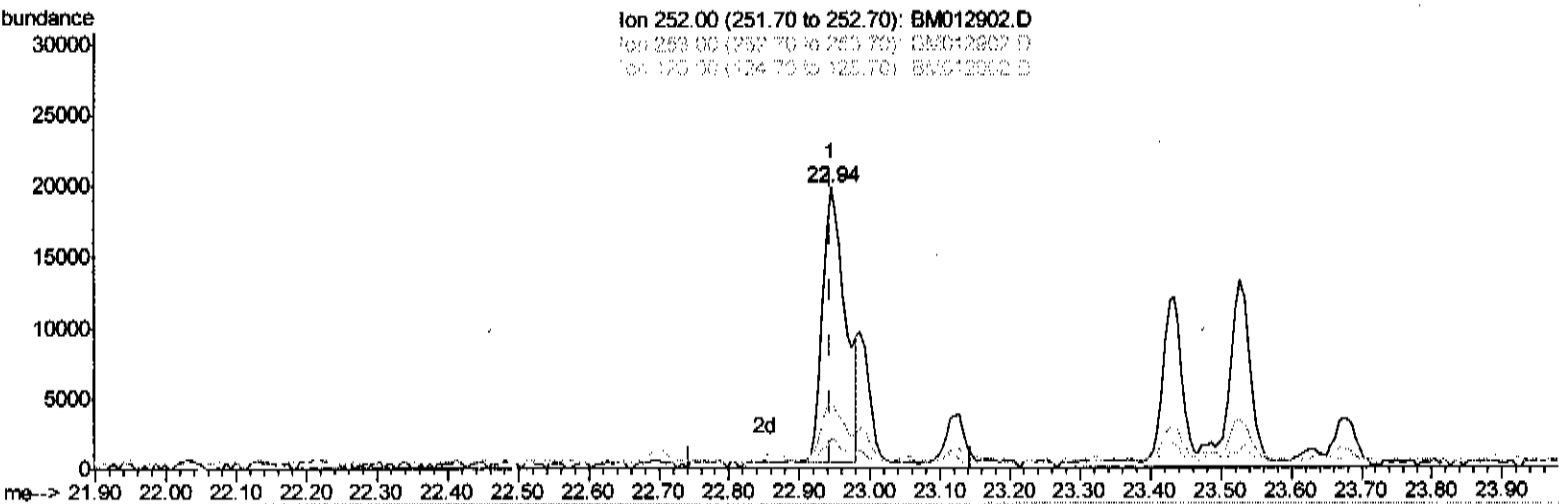


Data Path : Z:\HPCHEM1\BNA M\DATA\BM111017\
 Data File : BM012902.D
 Acq On : 11 Nov 2017 15:16
 Operator : SJ/JU
 Sample : I6319-07
 Misc :
 ALS Vial : 10 Sample Multiplier: 1

Instrument :
 BNA_M
 ClientSampled :
 DAHL2

Manual Integrations
 APPROVED
 SOHIL
 11/13/2017 4:50:59 PM

Quant Time: Nov 13 01:09:36 2017
 Quant Method : Z:\HPCHEM1\BNA M\METHODS\SOM-EPA-BM111017MA.M
 Quant Title : SVOA CALIBRATION
 QLast Update : Mon Nov 13 01:07:29 2017
 Response via : Initial Calibration



TIC: BM012902.D

(23) Benzo(b)fluoranthene
 22.944min (-0.000) 1.48ng/ul

Ion	Exp%	Act%
252.00	100	100
253.00	22.50	23.19
125.00	10.00	10.42
0.00	0.00	0.00

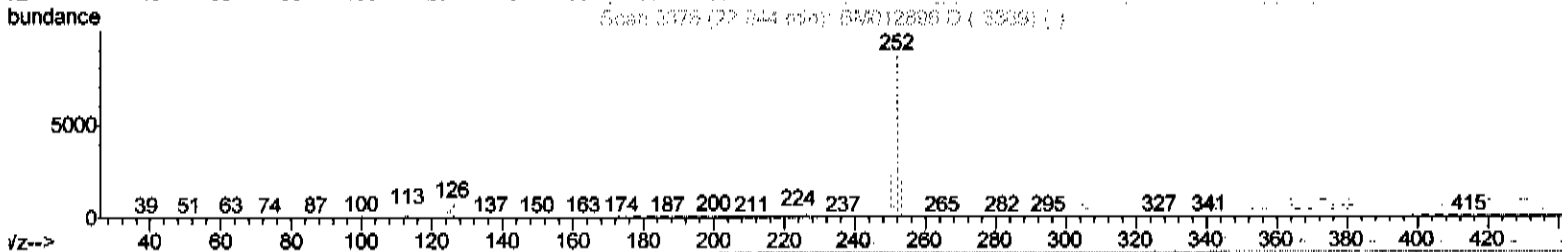
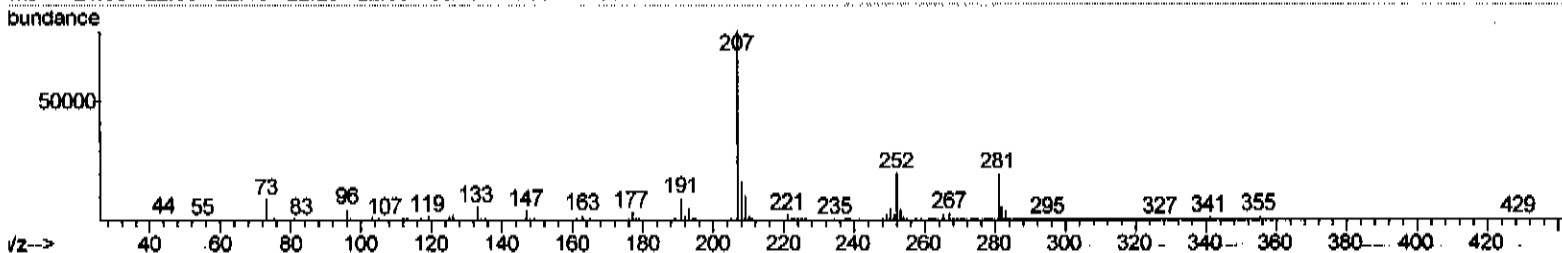
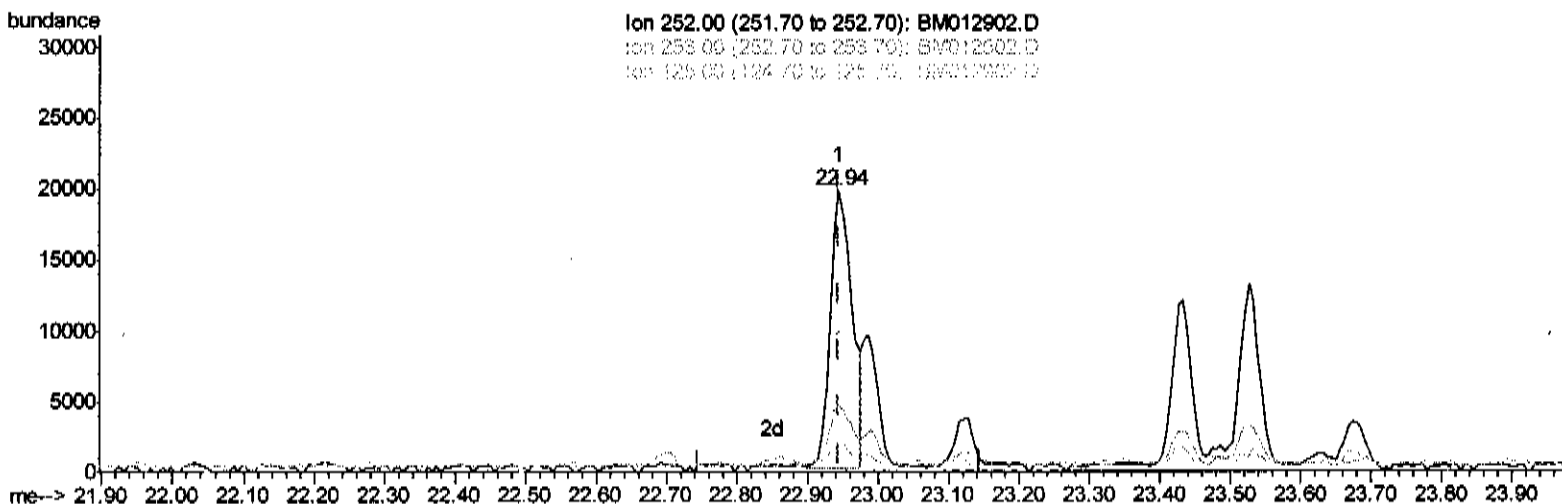
Data Path : Z:\HPCHEM1\BNA M\DATA\BM111017\
 Data File : BM012902.D
 Acq On : 11 Nov 2017 15:16
 Operator : SJ/JU
 Sample : I6319-07
 Misc :
 ALS Vial : 10 Sample Multiplier: 1

Instrument :
 BNA_M
 ClientSampled :
 DAHL2

Manual Integrations
 APPROVED

SOHIL
 11/13/2017 4:50:59 PM

Quant Time: Nov 13 01:09:36 2017
 Quant Method : Z:\HPCHEM1\BNA M\METHODS\SOM-EPA-BM111017MA.M
 Quant Title : SVOA CALIBRATION
 QLast Update : Mon Nov 13 01:07:29 2017
 Response via : Initial Calibration



TIC: BM012902.D

(23) Benzo(b)fluoranthene

22.944min (-0.000) 1.39ng/ul m

SJ 11/13/17

response 42235

Ion	Exp%	Act%
252.00	100	100
253.00	22.50	23.19
125.00	10.00	10.42
0.00	0.00	0.00

Data Path : Z:\HPCHEM1\BNA M\DATA\BM111017\
 Data File : BM012902.D
 Acq On : 11 Nov 2017 15:16
 Operator : SJ/JU
 Sample : I6319-07
 Misc :
 ALS Vial : 10 Sample Multiplier: 1

Instrument :
 BNA_M
 ClientSampled :
 DAHL2

Manual Integrations
 APPROVED

SOHIL
 11/13/2017 4:50:59 PM

Quant Time: Nov 13 01:37:23 2017
 Quant Method : Z:\HPCHEM1\BNA M\METHODS\SOM-EPA-BM111017MA.M
 Quant Title : SVOA CALIBRATION
 QLast Update : Mon Nov 13 01:07:29 2017
 Response via : Initial Calibration

Internal Standards	R.T.	QIon	Response	Conc	Units	Dev(Min)
1) 1,4-Dichlorobenzene-d4	7.79	152	70540	20.00	ng/ul	0.00
2) Naphthalene-d8	10.57	136	268625	20.00	ng/ul	0.00
6) Acenaphthene-d10	14.42	164	158380	20.00	ng/ul	0.00
12) Phenanthrene-d10	17.17	188	373566	20.00	ng/ul	0.00
17) Chrysene-d12	21.36	240	458269	20.00	ng/ul	0.00
22) Perylene-d12	23.63	264	509187	20.00	ng/ul	0.00
System Monitoring Compounds						
7) Acenaphthylene-d8	14.12	160	478006	29.02	ng/ul	0.00
10) Fluorene-d10	15.42	176	340568	30.23	ng/ul	0.00
14) Anthracene-d10	17.27	188	535815	29.67	ng/ul	0.00
18) Pyrene-d10	19.56	212	624835	30.47	ng/ul	0.00
25) Benzo(a)pyrene-d12	23.49	264	741203	30.83	ng/ul	0.00

Target Compounds	R.T.	QIon	Response	Conc	Units	Ovalue
23) Benzo(b)fluoranthene	22.94	252	42235m	1.39	ng/ul	> 24/11/13/17

(#) = qualifier out of range (m) = manual integration (+) = signals summed