

Data Path : \\74.0.250.170\SVOASRV\HPCHEM1\BNA M\DATA\BM111017\  
 Data File : BM012918.D  
 Acq On : 12 Nov 2017 00:44  
 Operator : SJ/JU  
 Sample : I6322-02MS  
 Misc :  
 ALS Vial : 25 Sample Multiplier: 1

**Instrument :**  
 BNA\_M  
**ClientSampleId :**  
 DAHH9MS

**Manual Integrations**  
**APPROVED**  
 SOHIL  
 11/13/2017 4:49:51 PM

Quant Time: Nov 13 03:16:09 2017  
 Quant Method : Z:\HPCHEM1\BNA M\METHODS\SOM-EPA-BM111017MA.M  
 Quant Title : SVOA CALIBRATION  
 QLast Update : Mon Nov 13 02:06:47 2017  
 Response via : Initial Calibration

Internal Standards	R.T.	QIon	Response	Conc	Units	Dev(Min)
1) 1,4-Dichlorobenzene-d4	7.78	152	80373	20.00	ng/ul	0.00
2) Naphthalene-d8	10.57	136	309090	20.00	ng/ul	0.00
6) Acenaphthene-d10	14.42	164	182862	20.00	ng/ul	0.00
12) Phenanthrene-d10	17.17	188	425664	20.00	ng/ul	0.00
17) Chrysene-d12	21.35	240	516529	20.00	ng/ul	0.00
22) Perylene-d12	23.63	264	571110	20.00	ng/ul	0.00

System Monitoring Compounds

7) Acenaphthylene-d8	14.12	160	444188	23.35	ng/ul	0.00
10) Fluorene-d10	15.42	176	328341	25.24	ng/ul	0.00
14) Anthracene-d10	17.27	188	519880	25.27	ng/ul	0.00
18) Pyrene-d10	19.56	212	575021	24.88	ng/ul	0.00
25) Benzo(a)pyrene-d12	23.49	264	677936	25.14	ng/ul	0.00

Target Compounds

					Ovalue
9) Acenaphthene	14.49	153	290109	23.407	ng/ul 96
11) Fluorene	15.47	166	20978	1.419	ng/ul 93
13) Phenanthrene	17.21	178	464599	19.761	ng/ul 100
15) Anthracene	17.30	178	106267	4.350	ng/ul 97
16) Fluoranthene	19.23	202	1027374	35.522	ng/ul# 92
19) Pyrene	19.59	202	1397283	47.125	ng/ul# 94
20) Benzo(a)anthracene	21.34	228	560178	17.625	ng/ul 98
21) Chrysene	21.39	228	476590	16.780	ng/ul 96
23) Benzo(b)fluoranthene	22.94	252	822217	24.210	ng/ul# 97
24) Benzo(k)fluoranthene	22.99	252	246485m	7.594	ng/ul
26) Benzo(a)pyrene	23.53	252	486791m	14.779	ng/ul
27) Indeno(1,2,3-cd)pyrene	25.93	276	405168	9.537	ng/ul 95
28) Dibenzo(a,h)anthracene	25.93	278	120393	3.371	ng/ul# 91
29) Benzo(a,h,i)perylene	26.64	276	314804	8.877	ng/ul 96

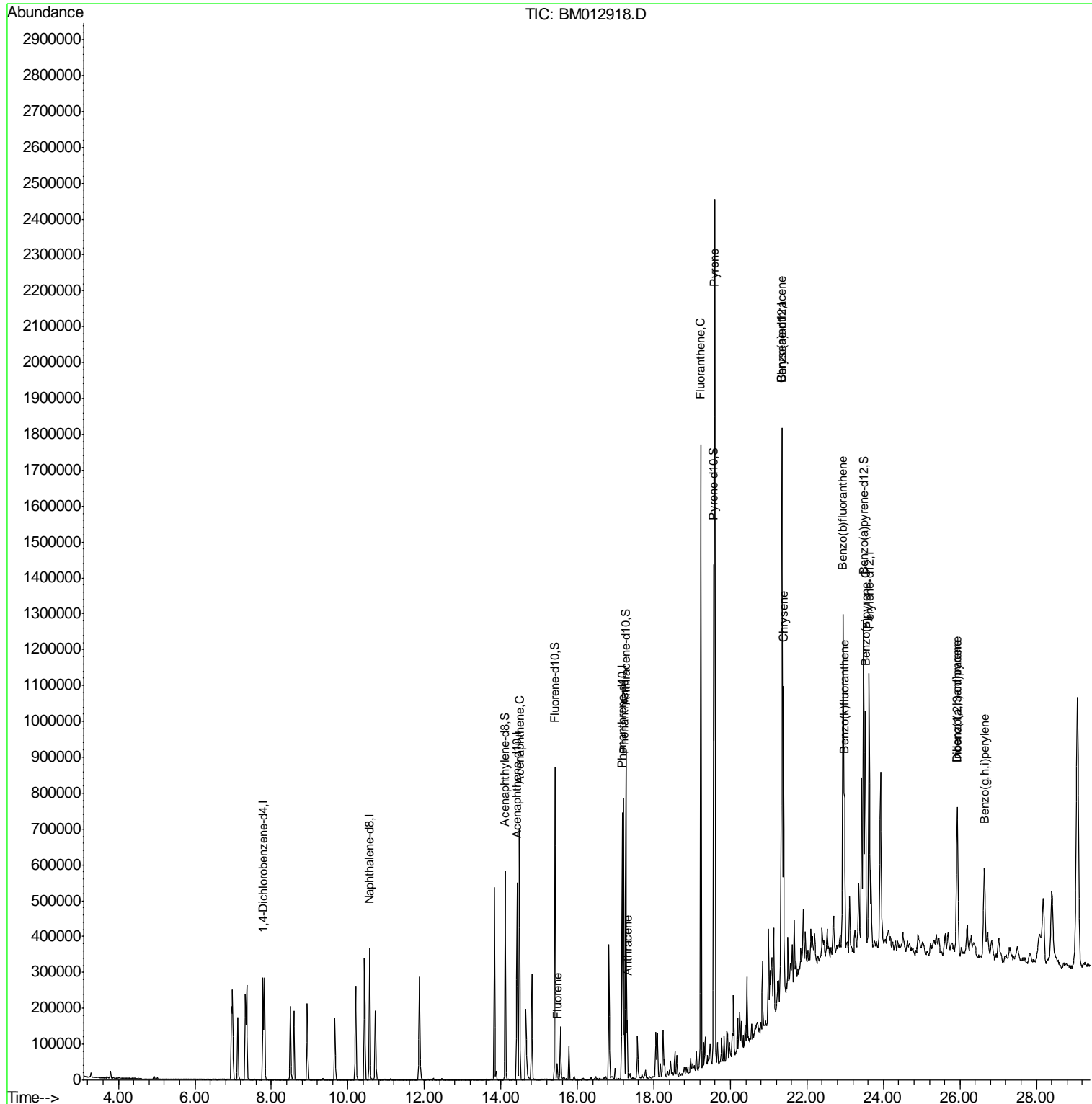
(#) = qualifier out of range (m) = manual integration (+) = signals summed

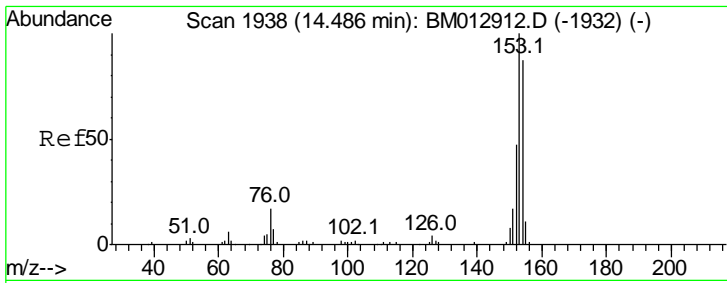
Data Path : \\74.0.250.170\SVOASRV\HPCHEM1\BNA M\DATA\BM111017\  
 Data File : BM012918.D  
 Acq On : 12 Nov 2017 00:44  
 Operator : SJ/JU  
 Sample : I6322-02MS  
 Misc :  
 ALS Vial : 25 Sample Multiplier: 1

Instrument :  
 BNA\_M  
 Client Sampled :  
 DAHH9MS

Manual Integrations  
 APPROVED  
 SOHIL  
 11/13/2017 4:49:51 PM

Quant Time: Nov 13 03:16:09 2017  
 Quant Method : Z:\HPCHEM1\BNA M\METHODS\SOM-EPA-BM111017MA.M  
 Quant Title : SVOA CALIBRATION  
 QLast Update : Mon Nov 13 02:06:47 2017  
 Response via : Initial Calibration



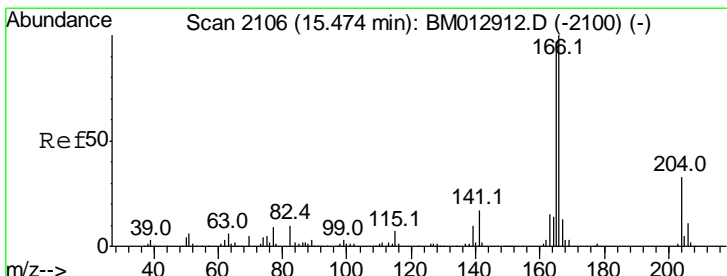
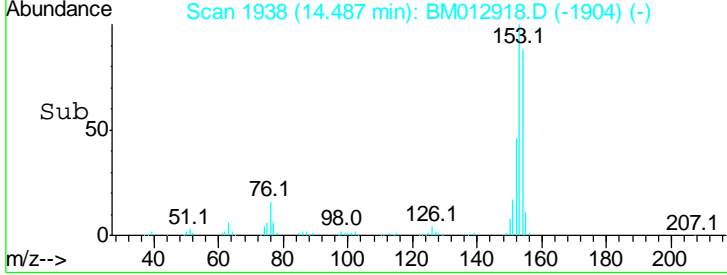
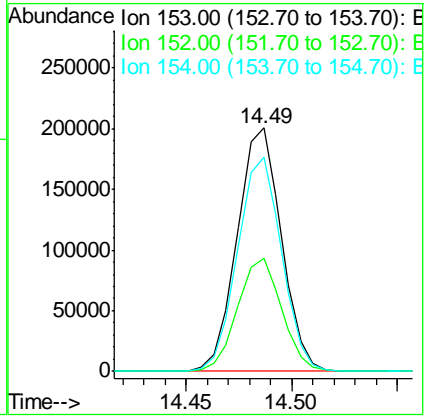
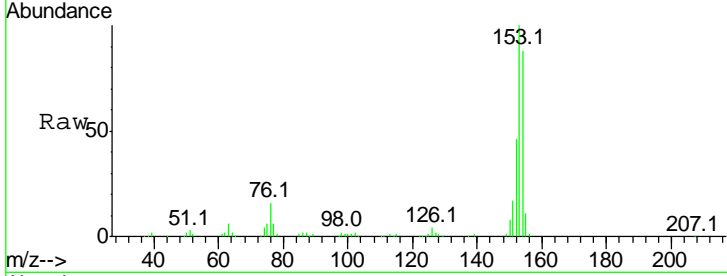


#9  
 Acenaphthene  
 Concen: 23.407 ng/ul  
 RT: 14.49 min Scan# 1938  
 Delta R.T. 0.00 min  
 Lab File: BM012918.D  
 Acq: 12 Nov 2017 00:44

Instrument :  
 BNA\_M  
 ClientSampled :  
 DAHH9MS

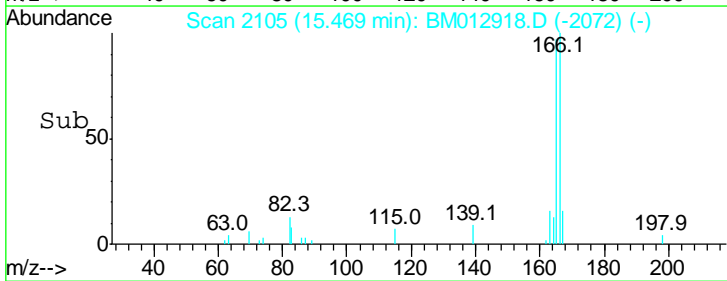
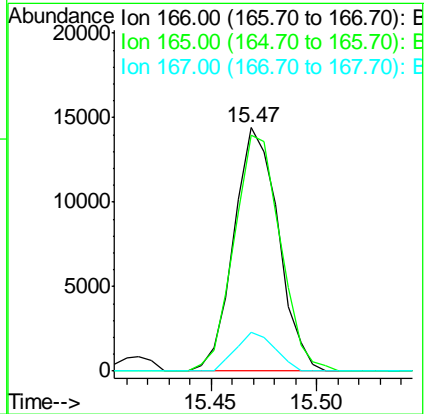
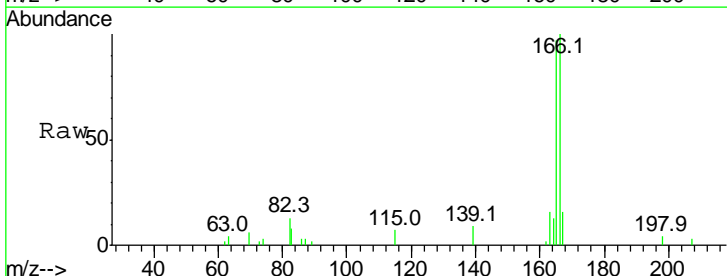
Tgt Ion	Resp	Lower	Upper
153	100		
152	46.5	39.0	58.6
154	87.8	66.8	100.2

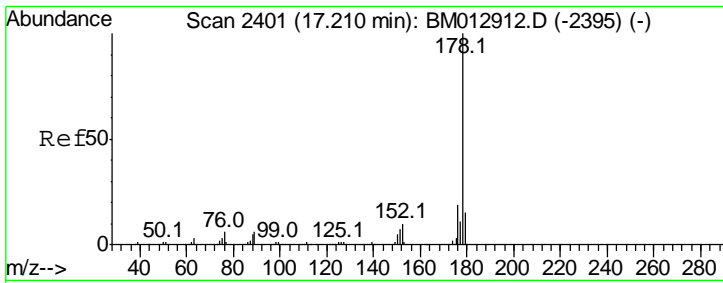
Manual Integrations  
**APPROVED**  
 SOHIL  
 11/13/2017 4:49:51 PM



#11  
 Fluorene  
 Concen: 1.419 ng/ul  
 RT: 15.47 min Scan# 2105  
 Delta R.T. -0.01 min  
 Lab File: BM012918.D  
 Acq: 12 Nov 2017 00:44

Tgt Ion	Resp	Lower	Upper
166	100		
165	96.8	83.8	125.8
167	15.9	11.5	17.3





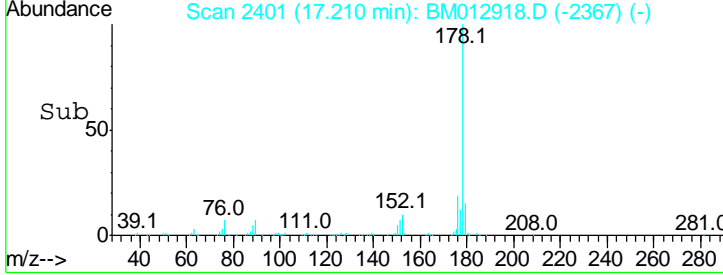
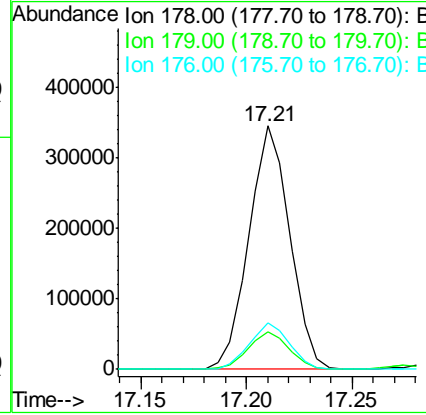
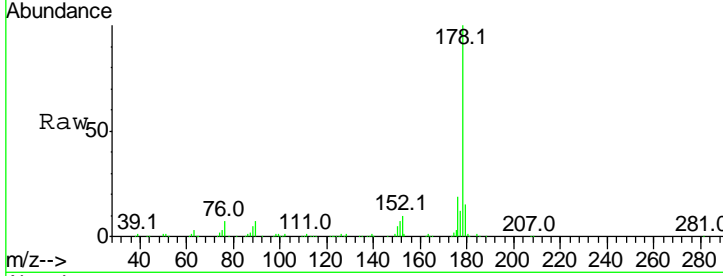
#13  
 Phenanthrene  
 Concen: 19.761 ng/ul  
 RT: 17.21 min Scan# 2401  
 Delta R.T. 0.00 min  
 Lab File: BM012918.D  
 Acq: 12 Nov 2017 00:44

**Instrument :**  
 BNA\_M  
**ClientSampled :**  
 DAHH9MS

Tgt Ion	Resp	Lower	Upper
178	100		
179	15.3	12.3	18.5
176	19.1	15.1	22.7

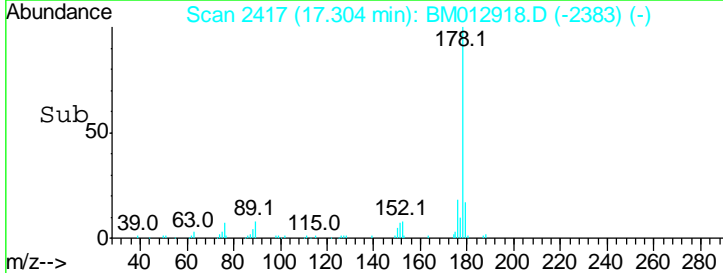
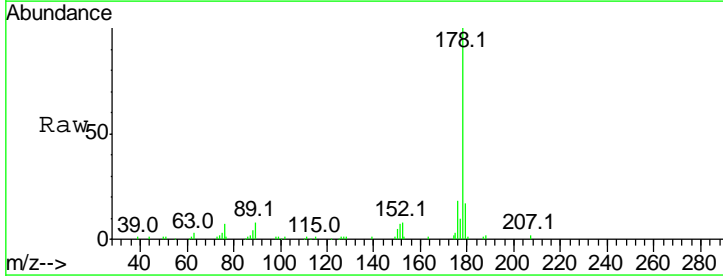
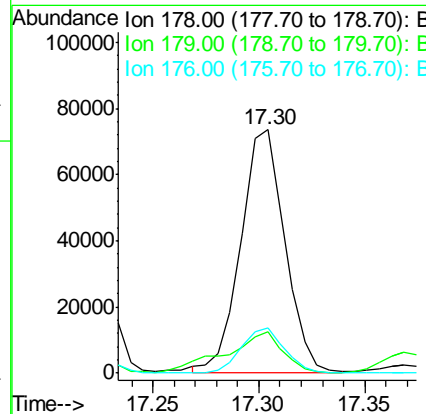
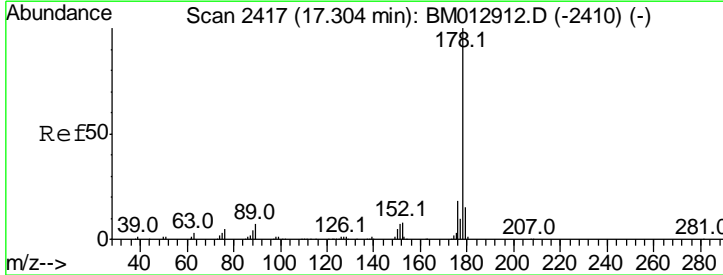
**Manual Integrations**  
**APPROVED**

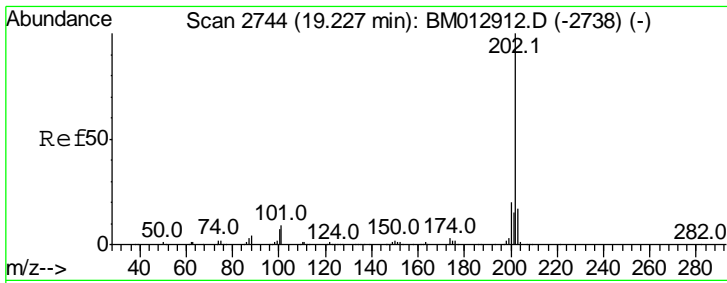
SOHIL  
 11/13/2017 4:49:51 PM



#15  
 Anthracene  
 Concen: 4.350 ng/ul  
 RT: 17.30 min Scan# 2417  
 Delta R.T. 0.00 min  
 Lab File: BM012918.D  
 Acq: 12 Nov 2017 00:44

Tgt Ion	Resp	Lower	Upper
178	100		
179	16.8	11.8	17.8
176	18.3	15.2	22.8





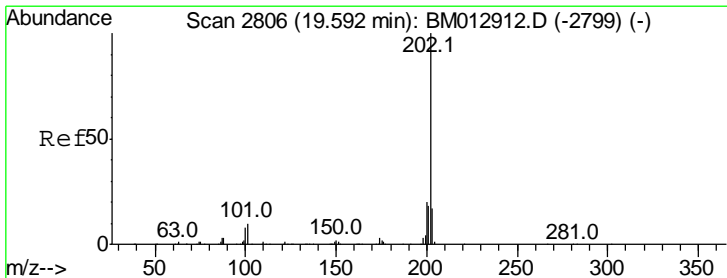
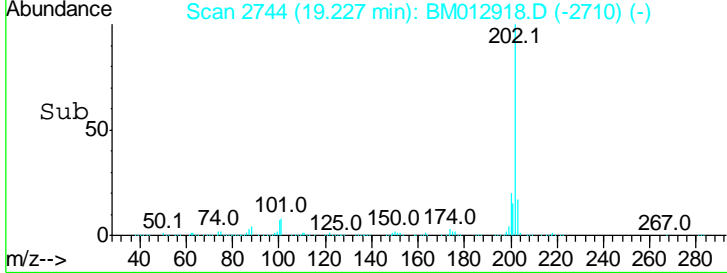
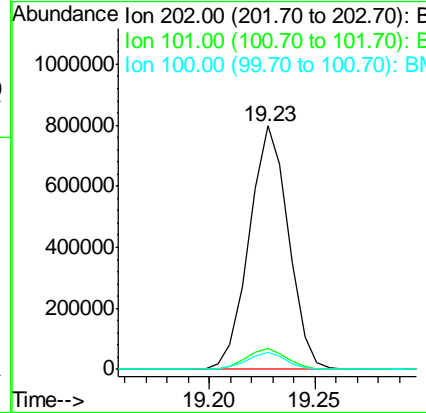
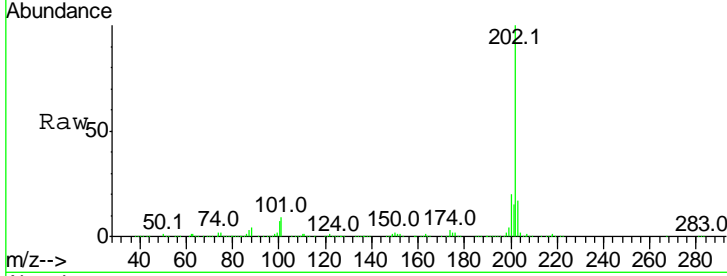
#16  
 Fluoranthene  
 Concen: 35.522 ng/ul  
 RT: 19.23 min Scan# 2744  
 Delta R.T. 0.00 min  
 Lab File: BM012918.D  
 Acq: 12 Nov 2017 00:44

**Instrument :**  
 BNA\_M  
**ClientSampled :**  
 DAHH9MS

Tgt Ion	Ratio	Lower	Upper
202	100		
101	8.5	9.9	14.9#
100	6.9	7.4	11.0#

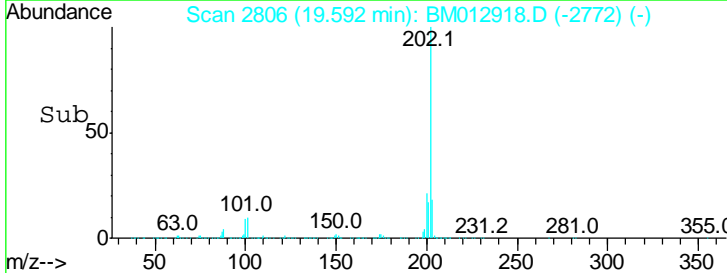
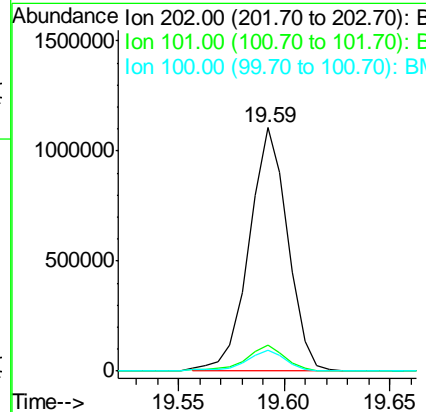
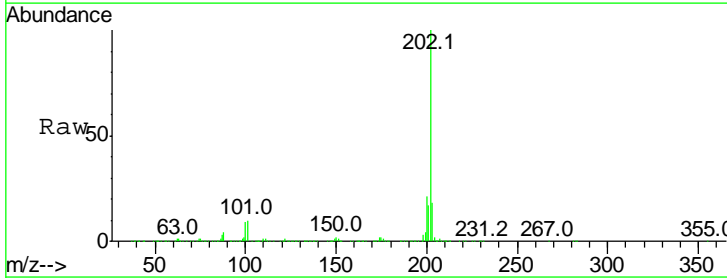
**Manual Integrations**  
**APPROVED**

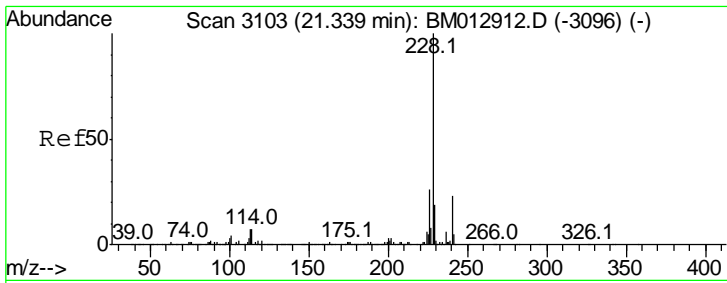
SOHIL  
 11/13/2017 4:49:51 PM



#19  
 Pyrene  
 Concen: 47.125 ng/ul  
 RT: 19.59 min Scan# 2806  
 Delta R.T. 0.00 min  
 Lab File: BM012918.D  
 Acq: 12 Nov 2017 00:44

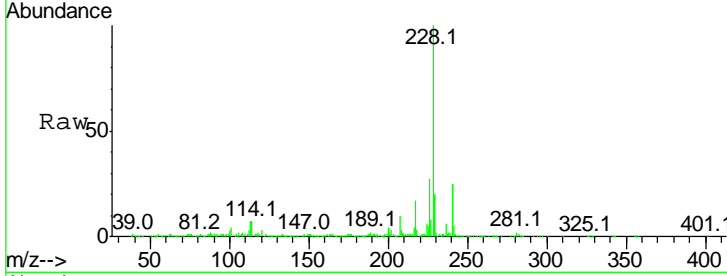
Tgt Ion	Ratio	Lower	Upper
202	100		
101	10.5	11.0	16.4#
100	8.6	8.1	12.1





#20  
 Benzo(a)anthracene  
 Concen: 17.625 ng/ul  
 RT: 21.34 min Scan# 3103  
 Delta R.T. 0.00 min  
 Lab File: BM012918.D  
 Acq: 12 Nov 2017 00:44

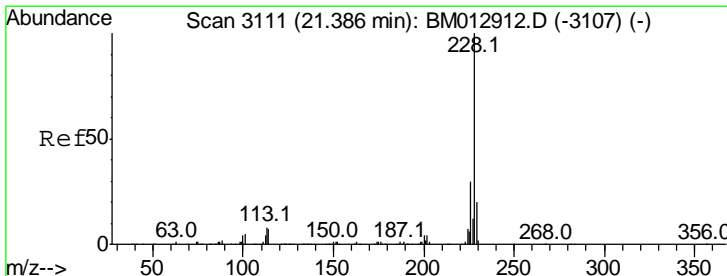
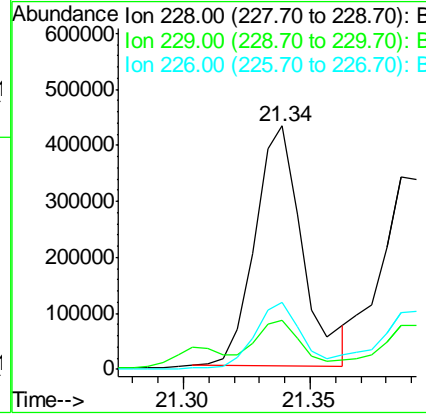
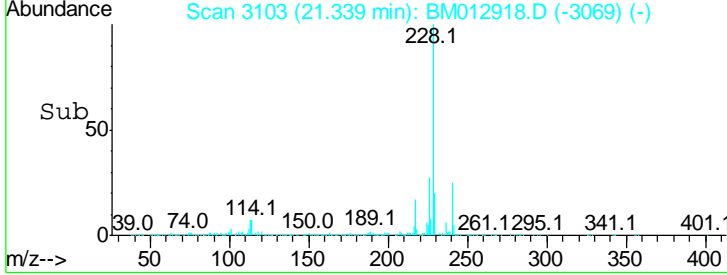
Instrument :  
 BNA\_M  
 ClientSampled :  
 DAHH9MS



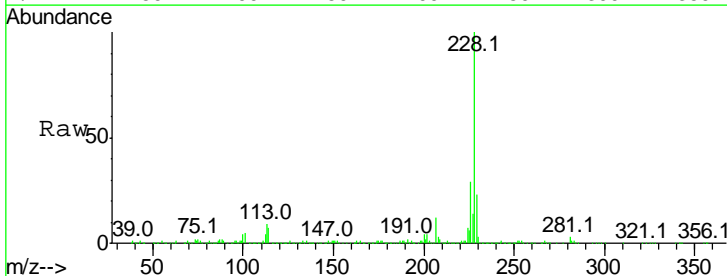
Tgt Ion: 228 Resp: 560178

Ion	Ratio	Lower	Upper
228	100		
229	20.2	15.7	23.5
226	27.3	21.1	31.7

Manual Integrations  
 APPROVED  
 SOHIL  
 11/13/2017 4:49:51 PM

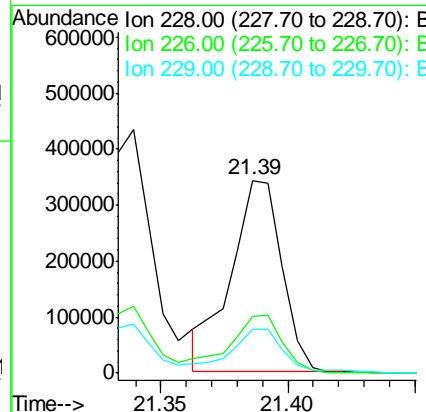
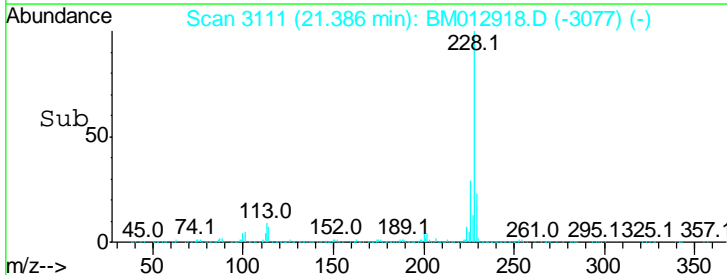


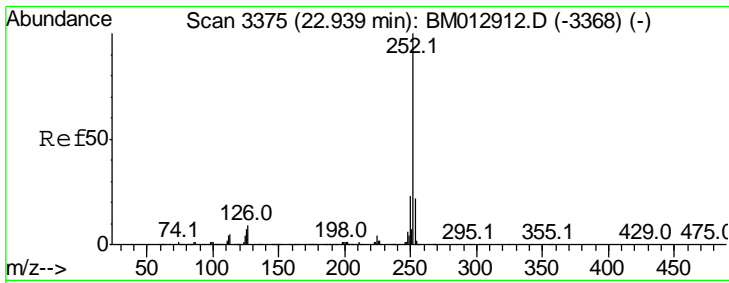
#21  
 Chrysene  
 Concen: 16.780 ng/ul  
 RT: 21.39 min Scan# 3111  
 Delta R.T. 0.00 min  
 Lab File: BM012918.D  
 Acq: 12 Nov 2017 00:44



Tgt Ion: 228 Resp: 476590

Ion	Ratio	Lower	Upper
228	100		
226	29.3	24.5	36.7
229	22.9	15.8	23.8





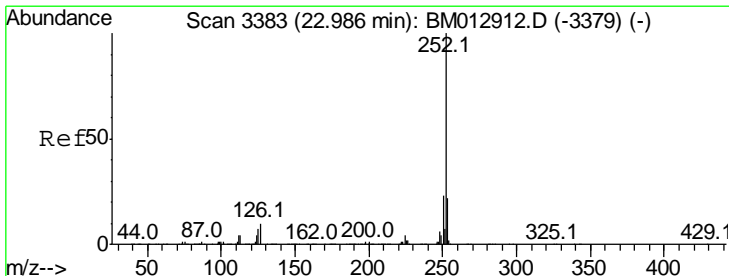
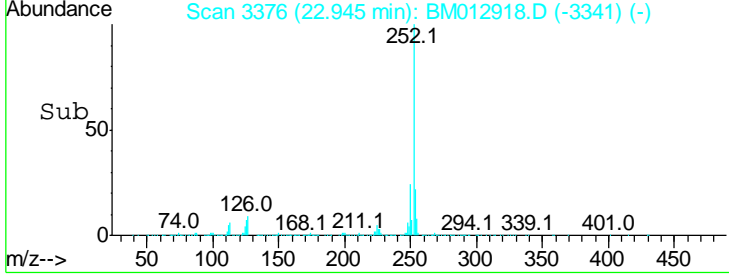
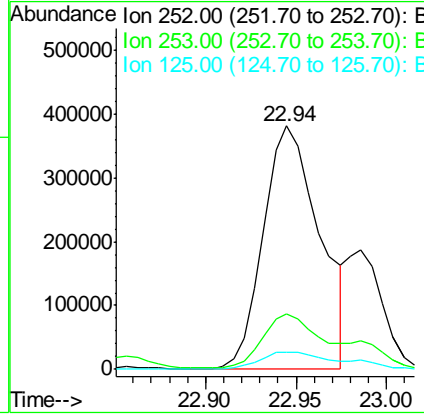
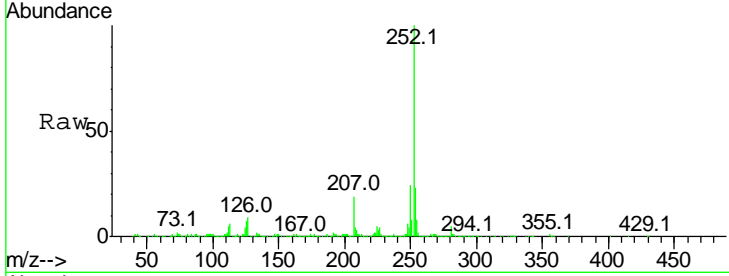
#23  
 Benzo(b)fluoranthene  
 Concen: 24.210 ng/ul  
 RT: 22.94 min Scan# 3376  
 Delta R.T. 0.01 min  
 Lab File: BM012918.D  
 Acq: 12 Nov 2017 00:44

Instrument :  
 BNA\_M  
 ClientSampled :  
 DAHH9MS

Tgt Ion	Ratio	Lower	Upper
252	100		
253	22.7	18.0	27.0
125	7.1	8.0	12.0#

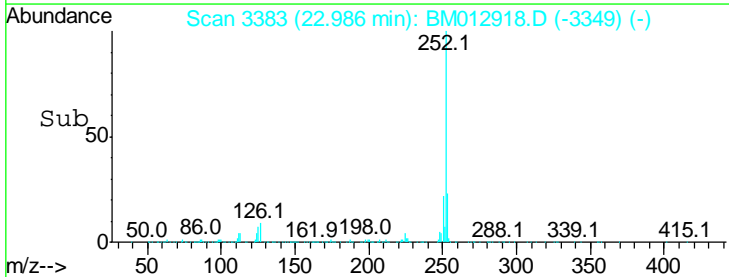
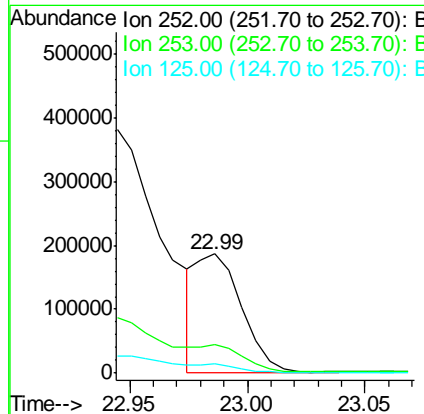
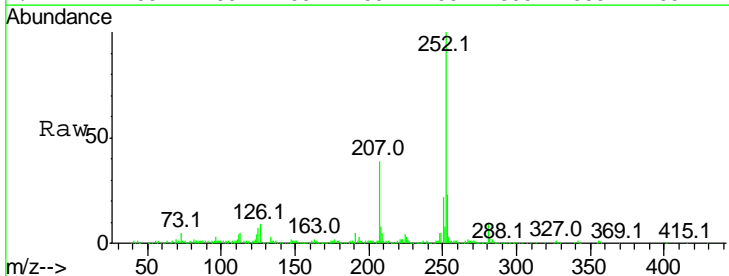
Manual Integrations  
 APPROVED

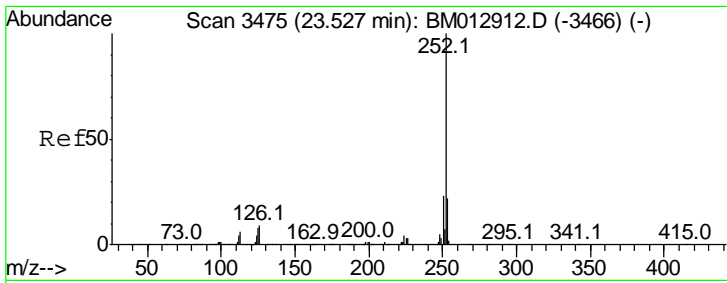
SOHIL  
 11/13/2017 4:49:51 PM



#24  
 Benzo(k)fluoranthene  
 Concen: 7.594 ng/ul m  
 RT: 22.99 min Scan# 3383  
 Delta R.T. 0.00 min  
 Lab File: BM012918.D  
 Acq: 12 Nov 2017 00:44

Tgt Ion	Ratio	Lower	Upper
252	100		
253	23.5	18.0	27.0
125	7.5	8.1	12.1#





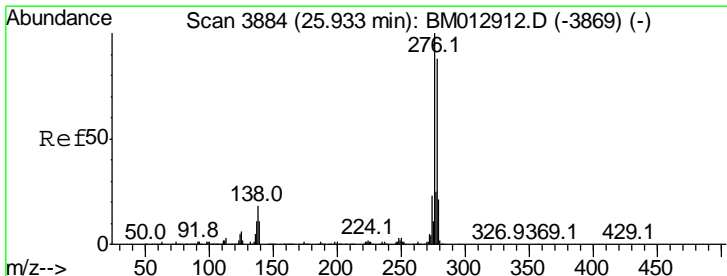
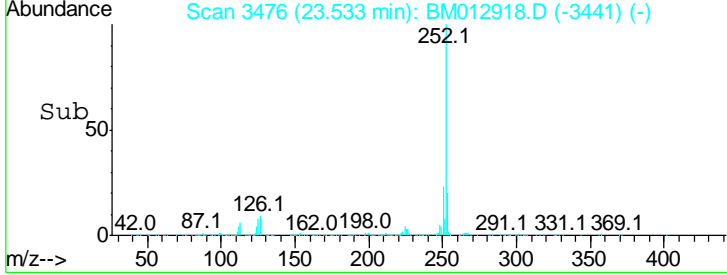
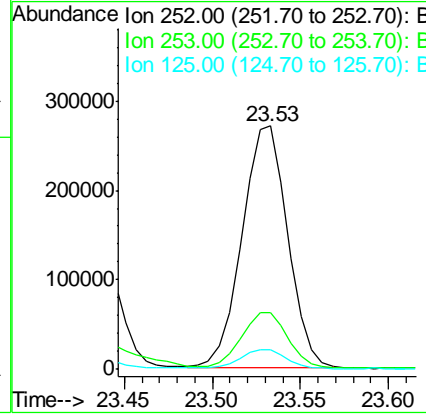
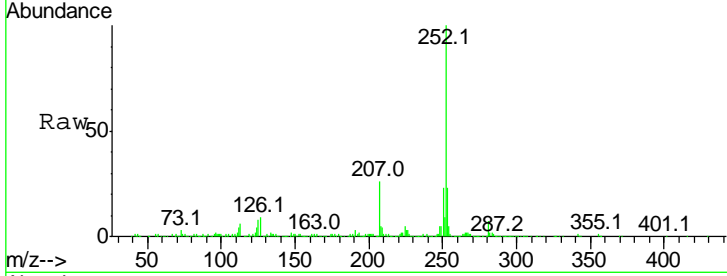
#26  
 Benzo(a)pyrene  
 Concen: 14.779 ng/ul m  
 RT: 23.53 min Scan# 3476  
 Delta R.T. 0.01 min  
 Lab File: BM012918.D  
 Acq: 12 Nov 2017 00:44

Instrument :  
 BNA\_M  
 ClientSampled :  
 DAHH9MS

Tgt Ion	Ratio	Lower	Upper
252	100		
253	23.1	17.2	25.8
125	8.0	8.2	12.4

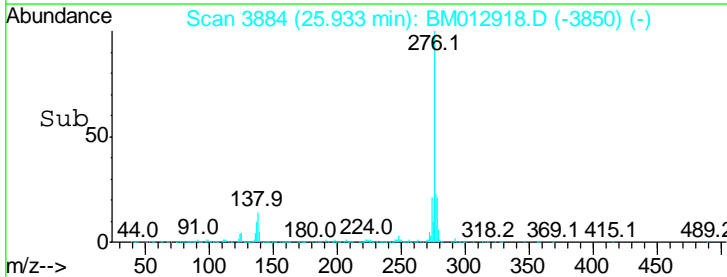
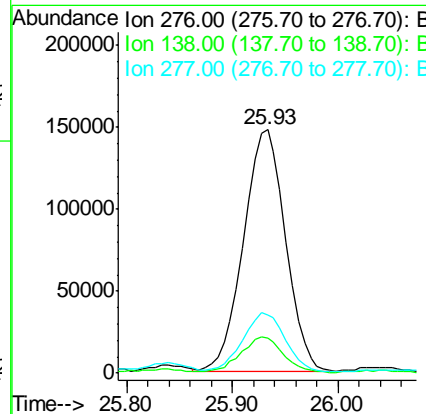
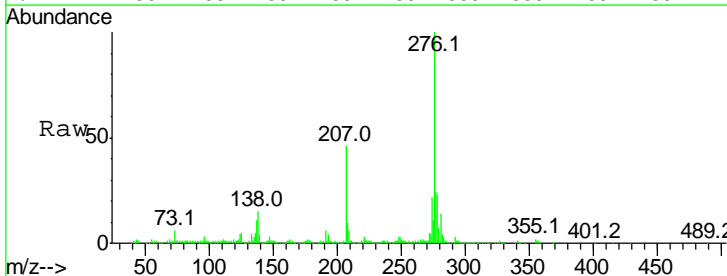
Manual Integrations  
 APPROVED

SOHIL  
 11/13/2017 4:49:51 PM

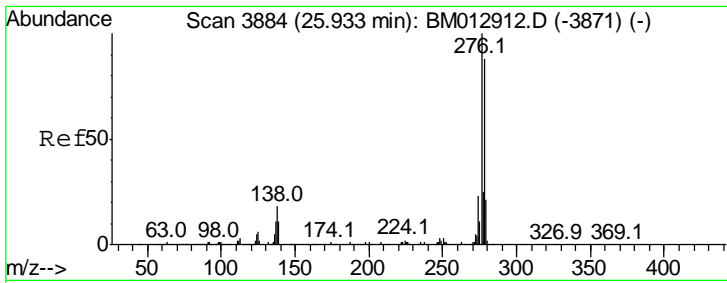


#27  
 Indeno(1,2,3-cd)pyrene  
 Concen: 9.537 ng/ul  
 RT: 25.93 min Scan# 3884  
 Delta R.T. 0.00 min  
 Lab File: BM012918.D  
 Acq: 12 Nov 2017 00:44

Tgt Ion	Ratio	Lower	Upper
276	100		
138	14.6	14.4	21.6
277	23.7	18.0	27.0

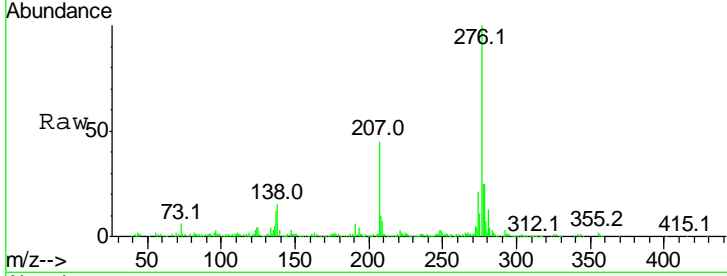






#28  
 Dibenzo(a,h)anthracene  
 Concen: 3.371 ng/ul  
 RT: 25.93 min Scan# 3883  
 Delta R.T. -0.01 min  
 Lab File: BM012918.D  
 Acq: 12 Nov 2017 00:44

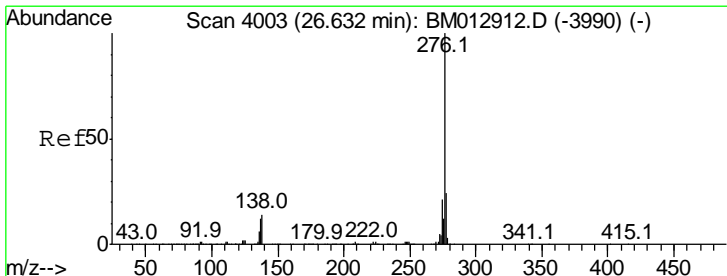
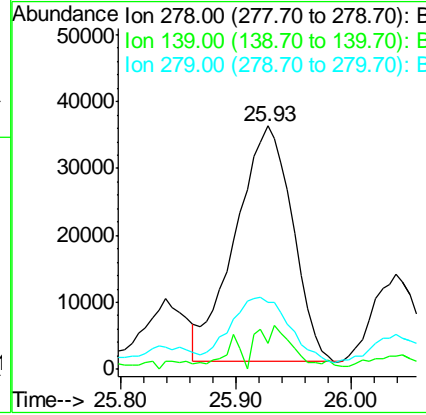
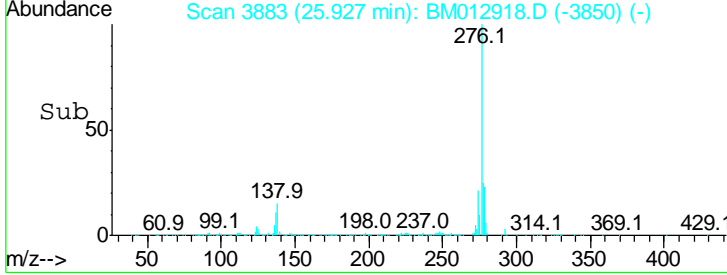
Instrument :  
 BNA\_M  
 ClientSampled :  
 DAHH9MS



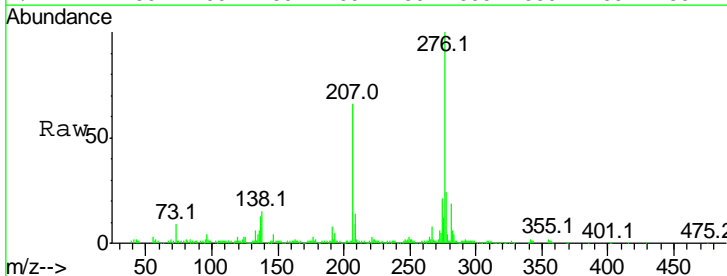
Tgt Ion	Ratio	Lower	Upper
278	100		
139	10.5	12.2	18.4#
279	27.5	19.2	28.8

Manual Integrations  
 APPROVED

SOHIL  
 11/13/2017 4:49:51 PM



#29  
 Benzo(g,h,i)perylene  
 Concen: 8.877 ng/ul  
 RT: 26.64 min Scan# 4004  
 Delta R.T. 0.01 min  
 Lab File: BM012918.D  
 Acq: 12 Nov 2017 00:44



Tgt Ion	Ratio	Lower	Upper
276	100		
138	15.4	15.3	22.9
277	24.4	19.0	28.4

