

Data Path : Z:\HPCHEM1\BNA\_M\Data\BM111116\  
 Data File : BM007831.D  
 Acq On : 11 Nov 2016 18:24  
 Operator : UM/SJ  
 Sample : H5612-07  
 Misc :  
 ALS Vial : 17 Sample Multiplier: 1

Instrument :  
 BNA\_M  
 ClientSampleId :  
 F2H10

Integration Parameters: LSCINT.P  
 Integrator: RTE  
 Smoothing : OFF  
 Sampling : 1  
 Start Thrs: 0.2  
 Stop Thrs : 0

Filtering: 5  
 Min Area: 1 % of largest Peak  
 Max Peaks: 100  
 Peak Location: TOP

If leading or trailing edge < 100 prefer < Baseline drop else tangent >  
 Peak separation: 5

Method : Z:\HPCHEM1\BNA\_M\METHODS\SOM02.2-EPA-BM102016.M  
 Title : SVOA CALIBRATION

Signal : TIC

peak #	R.T. min	first scan	max scan	last scan	PK TY	peak height	corr. area	corr. % max.	% of total
1	4.904	389	394	400	rBV2	37050	58122	1.23%	0.141%
2	6.916	731	736	747	rBV	139118	258808	5.48%	0.629%
3	7.081	757	764	777	rBV	573651	942992	19.95%	2.291%
4	7.275	790	797	810	rBV	647930	1068269	22.60%	2.596%
5	7.739	866	876	886	rBV	640859	1070624	22.65%	2.601%
6	8.445	990	996	1010	rBV2	435490	776561	16.43%	1.887%
7	8.892	1063	1072	1084	rBV	725865	1262050	26.70%	3.067%
8	9.610	1187	1194	1205	rBV	580477	1008993	21.35%	2.452%
9	10.145	1278	1285	1307	rBV	695877	1481202	31.34%	3.599%
10	10.516	1341	1348	1362	rVB	828331	1403652	29.70%	3.411%
11	13.786	1898	1904	1916	rBV	1593509	2284032	48.33%	5.550%
12	14.063	1944	1951	1964	rBV	1781770	2651710	56.11%	6.443%
13	14.374	1995	2004	2014	rBV	1251157	1815213	38.41%	4.411%
14	14.627	2041	2047	2062	rBV3	44247	137504	2.91%	0.334%
15	15.368	2166	2173	2187	rBV	2377153	3418873	72.34%	8.307%
16	15.504	2191	2196	2209	rVV	513643	843621	17.85%	2.050%
17	17.121	2465	2471	2481	rBV	1504034	2141489	45.31%	5.204%
18	17.221	2481	2488	2498	rBV	2580598	3632683	76.86%	8.827%
19	19.515	2872	2878	2887	rBV	3107822	4454496	94.25%	10.824%
20	21.309	3178	3183	3190	rBV	2181244	2871120	60.75%	6.976%
21	23.415	3535	3541	3555	rVB2	2468826	4726201	100.00%	11.484%
22	23.562	3559	3566	3576	rVB	1439132	2846499	60.23%	6.917%

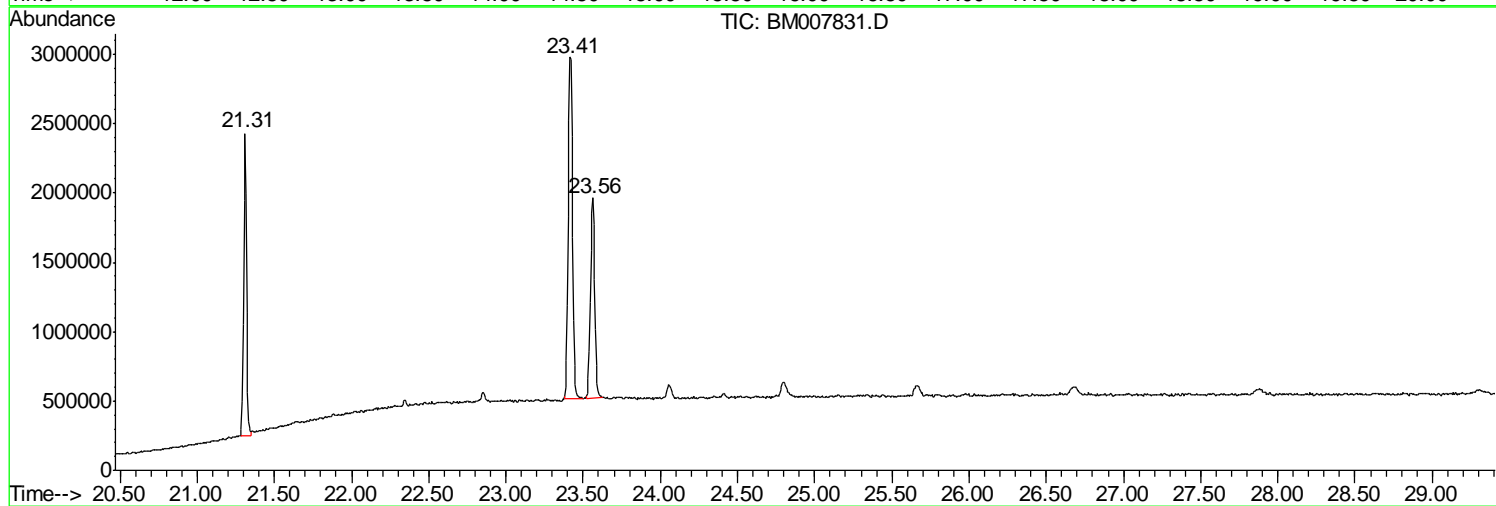
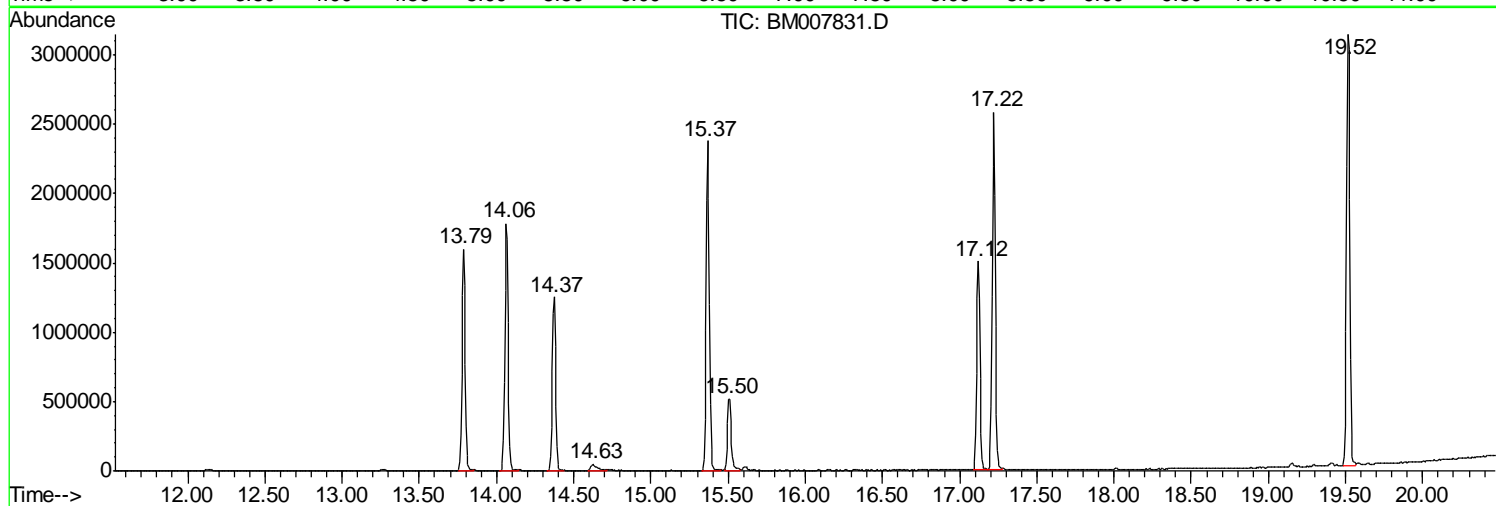
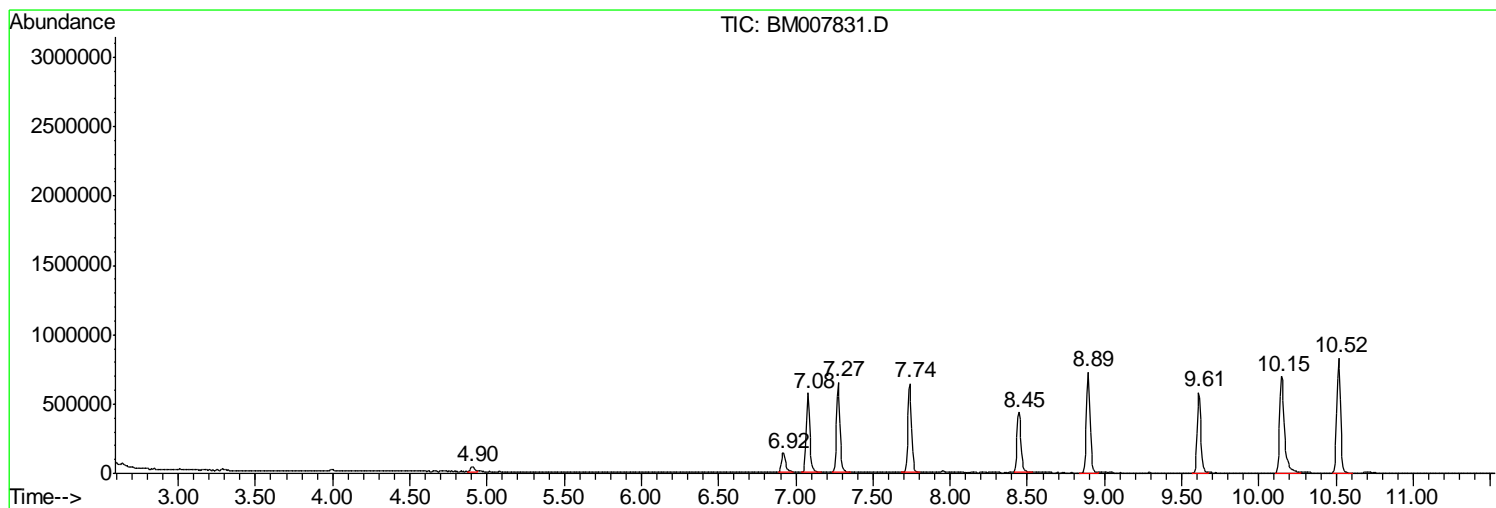
Sum of corrected areas: 41154714

Data Path : Z:\HPCHEM1\BNA\_M\Data\BM111116\  
Data File : BM007831.D  
Acq On : 11 Nov 2016 18:24  
Operator : UM/SJ  
Sample : H5612-07  
Misc :  
ALS Vial : 17 Sample Multiplier: 1

Instrument :  
BNA\_M  
ClientSampleId :  
F2H10

Quant Method : Z:\HPCHEM1\BNA\_M\METHODS\SOM02.2-EPA-BM102016.M  
Quant Title : SVOA CALIBRATION

TIC Library : C:\DATABASE\NIST11.L  
TIC Integration Parameters: LSCINT.P



Data Path : Z:\HPCHEM1\BNA\_M\Data\BM111116\  
Data File : BM007831.D  
Acq On : 11 Nov 2016 18:24  
Operator : UM/SJ  
Sample : H5612-07  
Misc :  
ALS Vial : 17 Sample Multiplier: 1

Instrument :  
BNA\_M  
ClientSampleId :  
F2H10

Quant Method : Z:\HPCHEM1\BNA\_M\METHODS\SOM02.2-EPA-BM102016.M  
Quant Title : SVOA CALIBRATION

TIC Library : C:\DATABASE\NIST11.L  
TIC Integration Parameters: LSCINT.P

No Library Search Compounds Detected

\*\*\*\*\*

Data Path : Z:\HPCHEM1\BNA\_M\Data\BM111116\  
Data File : BM007831.D  
Acq On : 11 Nov 2016 18:24  
Operator : UM/SJ  
Sample : H5612-07  
Misc :  
ALS Vial : 17 Sample Multiplier: 1

Instrument :  
BNA\_M  
ClientSampleId :  
F2H10

Quant Method : Z:\HPCHEM1\BNA\_M\METHODS\SOM02.2-EPA-BM102016.M  
Quant Title : SVOA CALIBRATION

TIC Library : C:\DATABASE\NIST11.L  
TIC Integration Parameters: LSCINT.P

TIC Top Hit name	RT	EstConc	Units	Response	--Internal Standard--			
					#	RT	Resp	Conc

---