

Data Path : Z:\HPCHEM1\BNA\_M\DATA\BM111516\  
 Data File : BM007907.D  
 Acq On : 15 Nov 2016 23:41  
 Operator : UM/SJ  
 Sample : H5612-10  
 Misc :  
 ALS Vial : 25 Sample Multiplier: 1

Instrument :  
 BNA\_M  
 ClientSampleId :  
 F2H08

Quant Time: Nov 16 07:46:01 2016  
 Quant Method : Z:\HPCHEM1\BNA\_M\METHODS\SOM-EPA-SIM-BM102516.M  
 Quant Title : ASP BNA STANDARDS FOR 5 POINT CALIBRATION  
 QLast Update : Wed Nov 16 07:43:19 2016  
 Response via : Initial Calibration

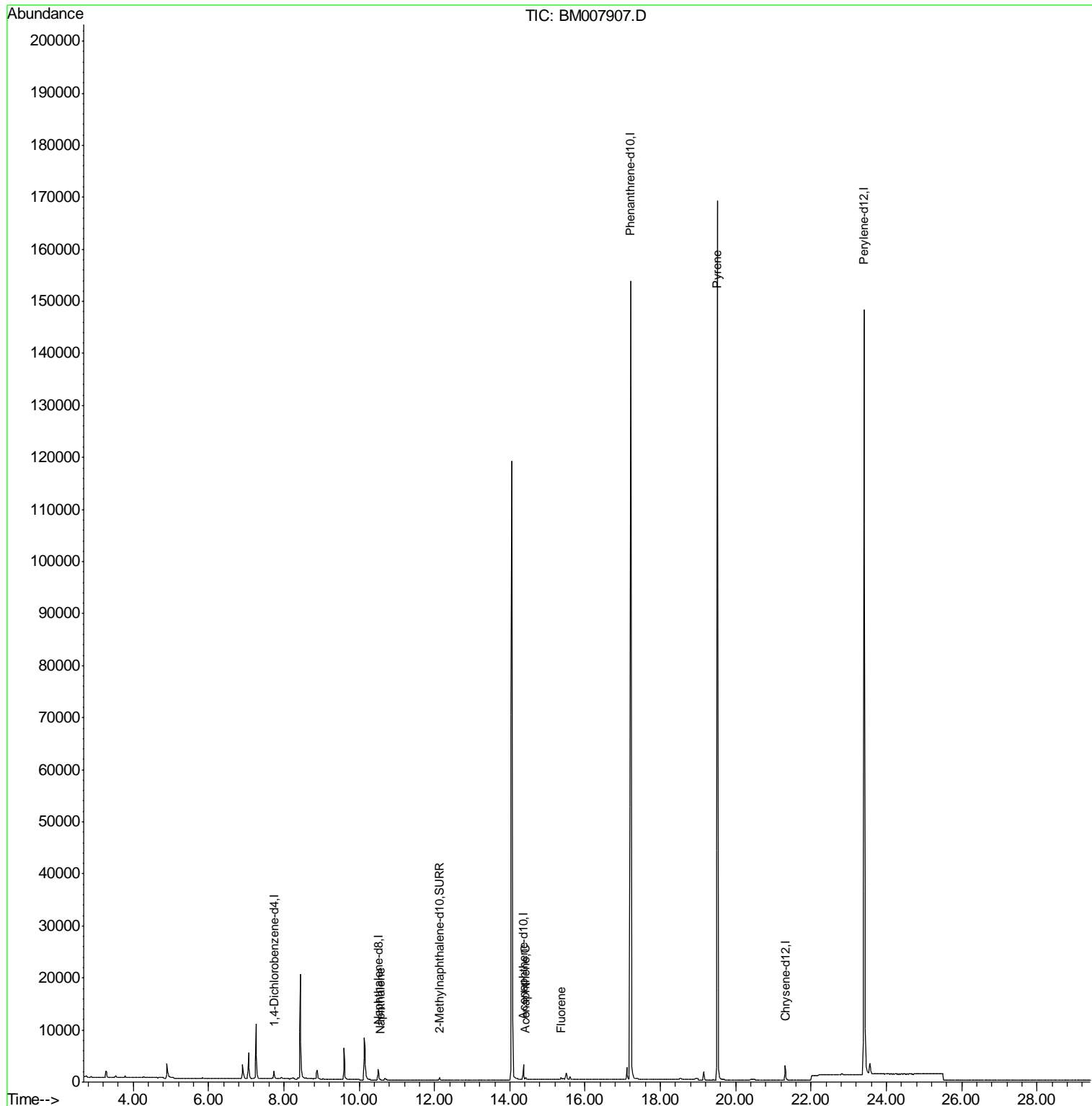
Internal Standards	R.T.	QIon	Response	Conc	Units	Dev(Min)
1) 1,4-Dichlorobenzene-d4	7.74	152	904	0.40	ng/ul	0.00
2) Naphthalene-d8	10.51	136	2910	0.40	ng/ul	-0.01
6) Acenaphthene-d10	14.37	164	1677	0.40	ng/ul	0.00
10) Phenanthrene-d10	17.21	188	198417	0.40	ng/ul	0.09
16) Chrysene-d12	21.31	240	3159	0.40	ng/ul	0.00
20) Perylene-d12	23.41	264	196490	0.40	ng/ul	-0.16
System Monitoring Compounds						
4) 2-Methylnaphthalene-d10	12.13	152	1108	0.32	ng/ul	0.01
14) Fluoranthene-d10	0.00	212	0	0.00	ng/ul	
Target Compounds						
3) Naphthalene	10.56	128	284	0.04	ng/ul#	55
8) Acenaphthene	14.42	153	179	0.03	ng/ul#	87
9) Fluorene	15.36	166	543	0.08	ng/ul#	30
17) Pyrene	19.51	202	415	0.04	ng/ul#	1

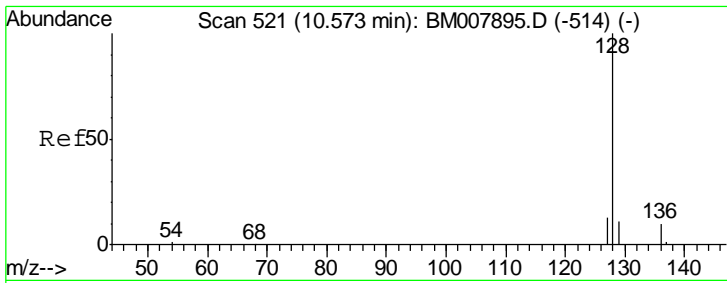
(#) = qualifier out of range (m) = manual integration (+) = signals summed

Data Path : Z:\HPCHEM1\BNA\_M\DATA\BM111516\  
 Data File : BM007907.D  
 Acq On : 15 Nov 2016 23:41  
 Operator : UM/SJ  
 Sample : H5612-10  
 Misc :  
 ALS Vial : 25 Sample Multiplier: 1

Instrument :  
 BNA\_M  
 ClientSampled :  
 F2H08

Quant Time: Nov 16 07:46:01 2016  
 Quant Method : Z:\HPCHEM1\BNA\_M\METHODS\SOM-EPA-SIM-BM102516.M  
 Quant Title : ASP BNA STANDARDS FOR 5 POINT CALIBRATION  
 QLast Update : Wed Nov 16 07:43:19 2016  
 Response via : Initial Calibration



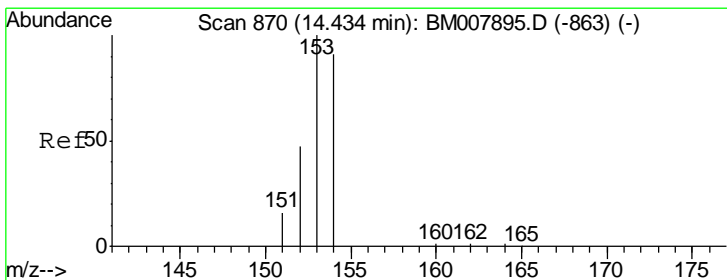
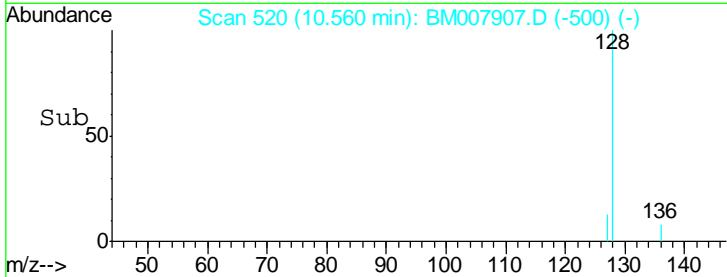
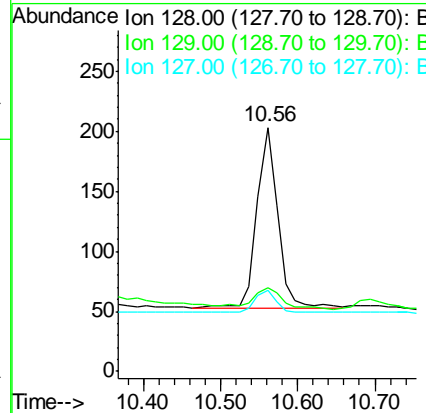
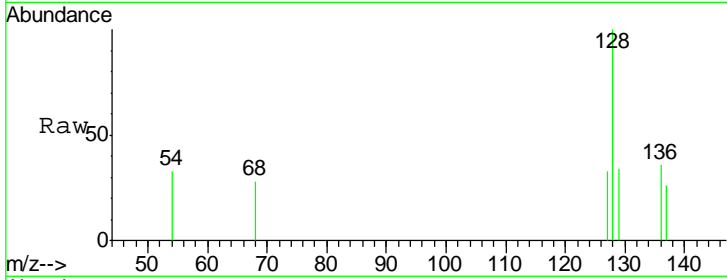


#3  
 Naphthalene  
 Concen: 0.04 ng/ul  
 RT: 10.56 min Scan# 520  
 Delta R.T. -0.01 min  
 Lab File: BM007907.D  
 Acq: 15 Nov 2016 23:41

Instrument :  
 BNA\_M  
 ClientSampled :  
 F2H08

Tgt Ion: 128 Resp: 284

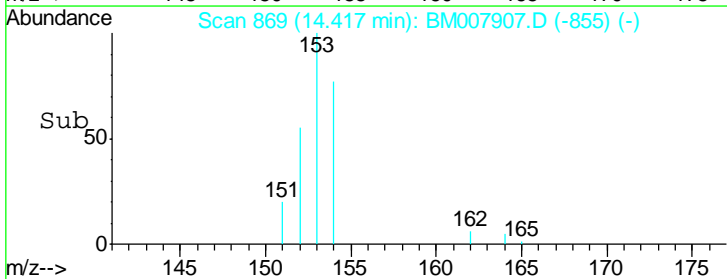
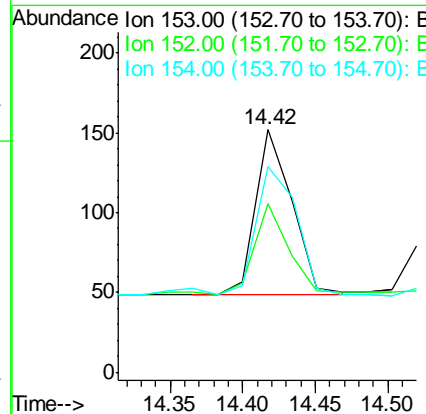
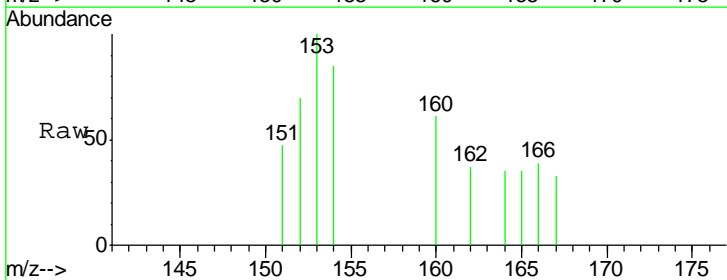
Ion	Ratio	Lower	Upper
128	100		
129	34.5	11.3	16.9#
127	33.5	12.8	19.2#

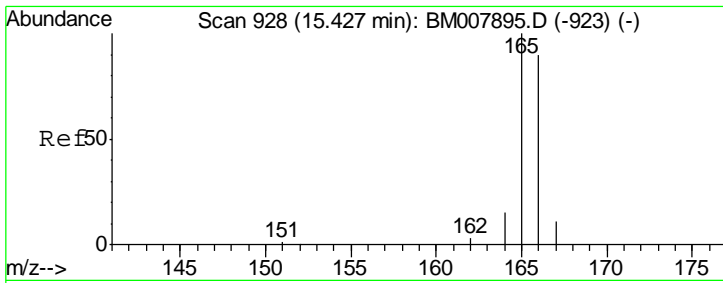


#8  
 Acenaphthene  
 Concen: 0.03 ng/ul  
 RT: 14.42 min Scan# 869  
 Delta R.T. -0.02 min  
 Lab File: BM007907.D  
 Acq: 15 Nov 2016 23:41

Tgt Ion: 153 Resp: 179

Ion	Ratio	Lower	Upper
153	100		
152	69.7	40.3	60.5#
154	84.9	71.4	107.2

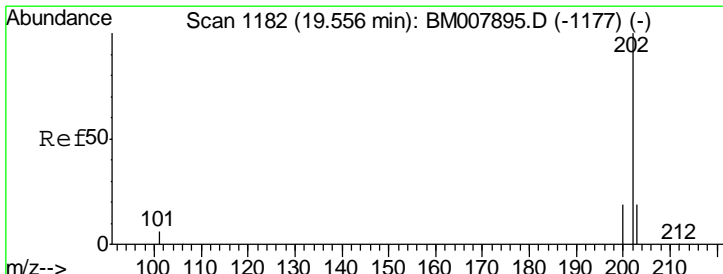
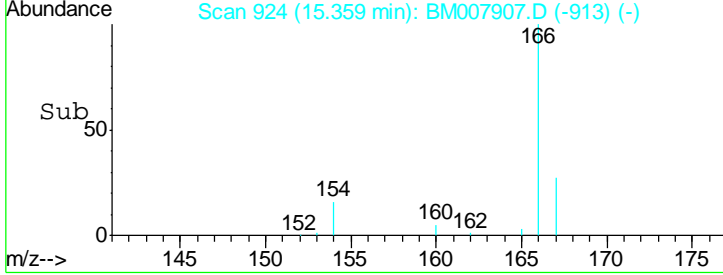
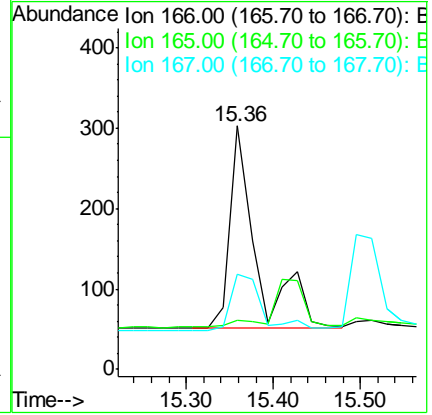
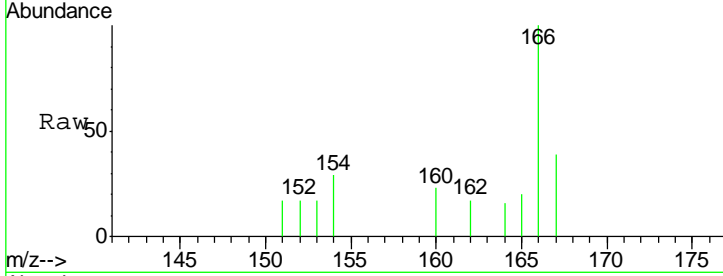




#9  
 Fluorene  
 Concen: 0.08 ng/ul  
 RT: 15.36 min Scan# 924  
 Delta R.T. -0.07 min  
 Lab File: BM007907.D  
 Acq: 15 Nov 2016 23:41

Instrument :  
 BNA\_M  
 ClientSampleId :  
 F2H08

Tgt Ion	Resp	Lower	Upper
166	100		
165	20.1	73.4	110.2#
167	38.9	14.6	22.0#



#17  
 Pyrene  
 Concen: 0.04 ng/ul  
 RT: 19.51 min Scan# 1178  
 Delta R.T. -0.05 min  
 Lab File: BM007907.D  
 Acq: 15 Nov 2016 23:41

Tgt Ion	Resp	Lower	Upper
202	100		
200	18.6	18.2	27.4
203	140.5	15.6	23.4#

