

Data Path : Z:\HPCHEM1\BNA\_M\DATA\BM111716\  
 Data File : BM007942.D  
 Acq On : 17 Nov 2016 16:45  
 Operator : UM/SJ  
 Sample : H5622-05  
 Misc :  
 ALS Vial : 5 Sample Multiplier: 1

Instrument :  
 BNA\_M  
 ClientSampleId :  
 A4WK5

Quant Time: Nov 18 01:22:50 2016  
 Quant Method : Z:\HPCHEM1\BNA\_M\METHODS\SOM02.2-EPA-BM102016.M  
 Quant Title : SVOA CALIBRATION  
 QLast Update : Fri Nov 18 01:20:31 2016  
 Response via : Initial Calibration

Internal Standards	R.T.	QIon	Response	Conc	Units	Dev(Min)
1) 1,4-Dichlorobenzene-d4	7.73	152	179181	20.00	ng/ul	0.00
18) Naphthalene-d8	10.50	136	672644	20.00	ng/ul	0.00
35) Acenaphthene-d10	14.36	164	412273	20.00	ng/ul	0.00
61) Phenanthrene-d10	17.11	188	795634	20.00	ng/ul	0.00
75) Chrysene-d12	21.30	240	1005597	20.00	ng/ul	0.00
83) Perylene-d12	23.54	264	1064548	20.00	ng/ul	0.00

## System Monitoring Compounds

3) 1,4-Dioxane-d8	3.28	96	4995	1.20	ng/uL	0.00
5) Phenol-d5	6.90	99	89481	6.40	ng/ul	0.00
7) Bis-(2-Chloroethyl)ether-d	7.07	67	225547	27.29	ng/ul	0.00
9) 2-Chlorophenol-d4	7.26	132	248647	23.20	ng/ul	0.00
13) 4-Methylphenol-d8	8.43	113	168142	15.49	ng/ul	0.00
19) Nitrobenzene-d5	8.89	128	146853	30.06	ng/ul	0.00
22) 2-Nitrophenol-d4	9.60	143	161168	30.77	ng/ul	0.00
26) 2,4-Dichlorophenol-d3	10.14	165	273153	26.71	ng/ul	0.00
29) 4-Chloroaniline-d4	10.69	131	13292	1.13	ng/ul	0.04
43) Dimethylphthalate-d6	13.77	166	975127	34.43	ng/ul	0.00
46) Acenaphthylene-d8	14.05	160	1125065	33.05	ng/ul	0.00
51) 4-Nitrophenol-d4	14.62	143	14416	3.18	ng/ul	0.04
57) Fluorene-d10	15.36	176	841598	34.02	ng/ul	0.00
62) 4,6-Dinitro-2-methylphenol	15.50	200	131005	27.66	ng/ul	0.00
70) Anthracene-d10	17.21	188	1324376	36.62	ng/ul	0.00
76) Pyrene-d10	19.50	212	1564780	37.70	ng/ul	0.00
87) Benzo(a)pyrene-d12	23.40	264	1751061	37.27	ng/ul	0.00

## Target Compounds

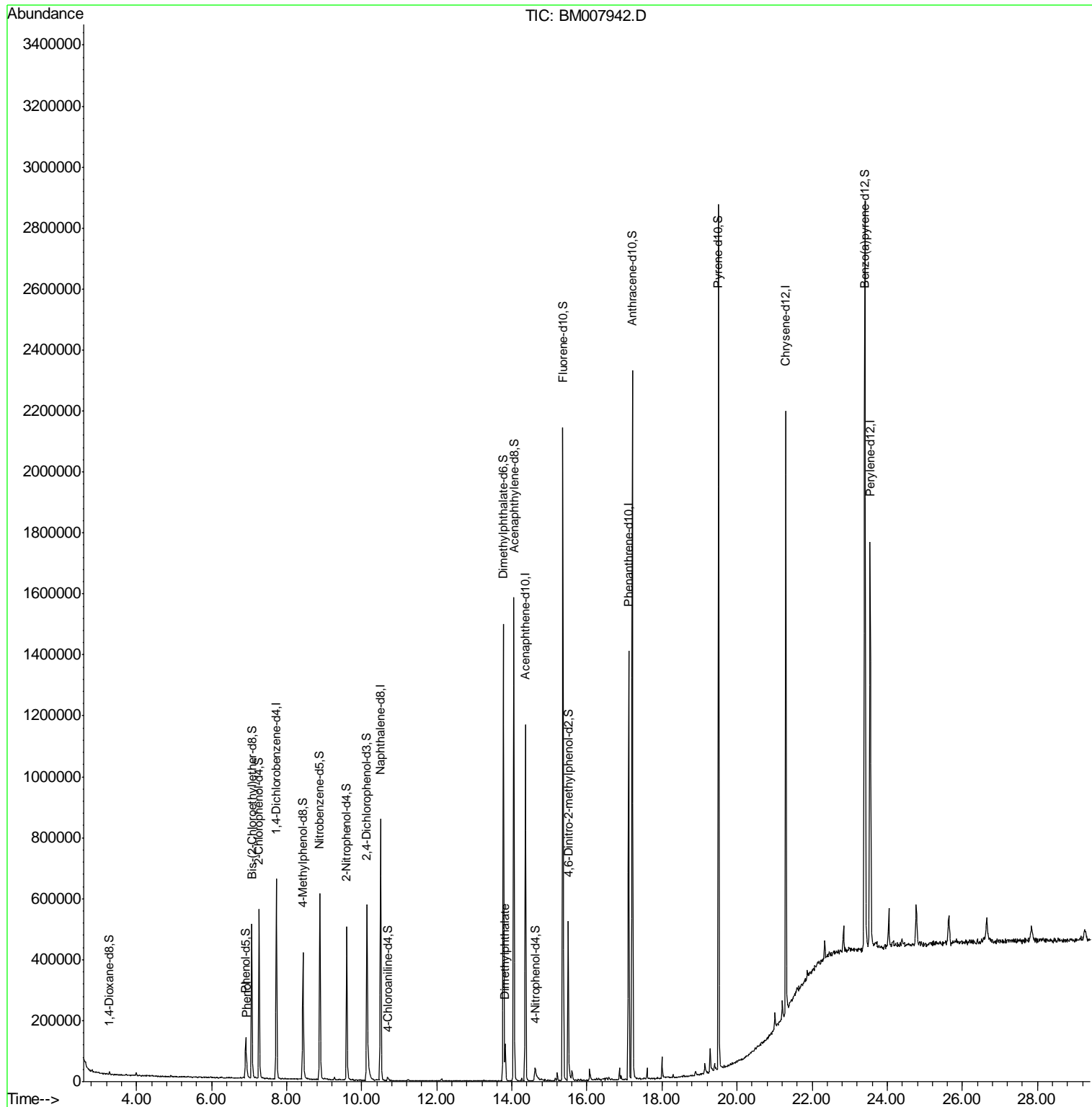
					Qvalue
6) Phenol	6.94	94	20385	1.43	ng/ul 93
44) Dimethylphthalate	13.82	163	75296	2.75	ng/ul 99

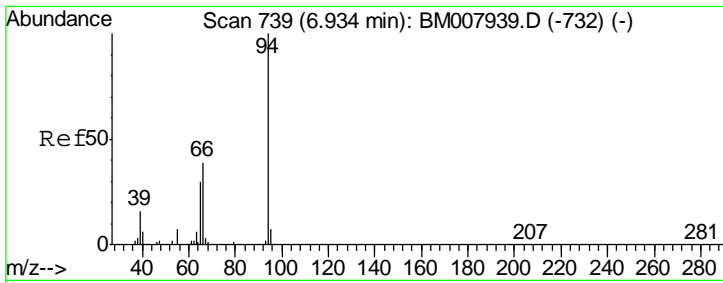
(#) = qualifier out of range (m) = manual integration (+) = signals summed

Data Path : Z:\HPCHEM1\BNA\_M\DATA\BM111716\  
 Data File : BM007942.D  
 Acq On : 17 Nov 2016 16:45  
 Operator : UM/SJ  
 Sample : H5622-05  
 Misc :  
 ALS Vial : 5 Sample Multiplier: 1

Instrument :  
 BNA\_M  
 ClientSampleId :  
 A4WK5

Quant Time: Nov 18 01:22:50 2016  
 Quant Method : Z:\HPCHEM1\BNA\_M\METHODS\SOM02.2-EPA-BM102016.M  
 Quant Title : SVOA CALIBRATION  
 QLast Update : Fri Nov 18 01:20:31 2016  
 Response via : Initial Calibration

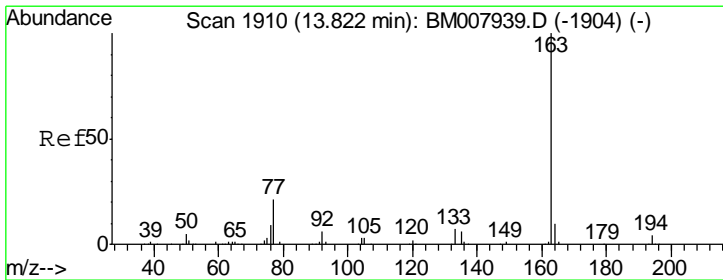
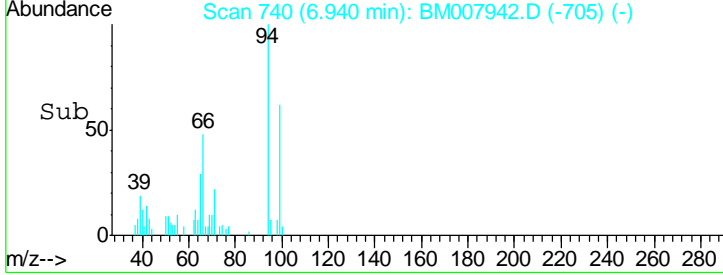
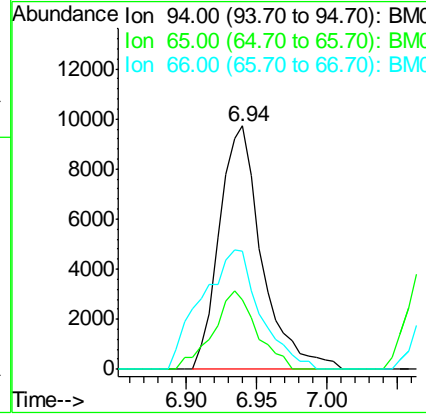
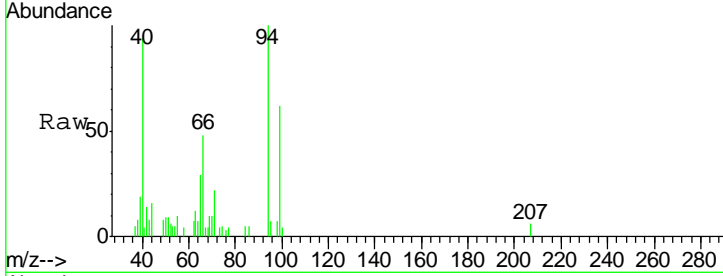




#6  
 Phenol  
 Concen: 1.43 ng/ul  
 RT: 6.94 min Scan# 740  
 Delta R.T. 0.01 min  
 Lab File: BM007942.D  
 Acq: 17 Nov 2016 16:45

Instrument :  
 BNA\_M  
 ClientSampled :  
 A4WK5

Tgt Ion	Resp	Lower	Upper
94	20385		
65	28.7	23.9	35.9
66	48.3	33.5	50.3



#44  
 Dimethylphthalate  
 Concen: 2.75 ng/ul  
 RT: 13.82 min Scan# 1910  
 Delta R.T. 0.00 min  
 Lab File: BM007942.D  
 Acq: 17 Nov 2016 16:45

Tgt Ion	Resp	Lower	Upper
163	75296		
194	3.8	3.4	5.2
164	9.6	7.8	11.8

