

Data Path : Z:\HPCHEM1\BNA M\DATA\BM111717\  
 Data File : BM013038.D  
 Acq On : 18 Nov 2017 13:58  
 Operator : SJ/JU  
 Sample : I6405-05 5X  
 Misc :  
 ALS Vial : 48 Sample Multiplier: 1

Instrument :  
 BNA\_M  
 ClientSampleId :  
 BE2S7

Quant Time: Nov 20 11:09:15 2017  
 Quant Method : Z:\HPCHEM1\BNA M\METHODS\SOM-EPA-BM111617.M  
 Quant Title : SVOA CALIBRATION  
 QLast Update : Mon Nov 20 06:14:09 2017  
 Response via : Initial Calibration

Internal Standards	R.T.	QIon	Response	Conc	Units	Dev(Min)
1) 1,4-Dichlorobenzene-d4	7.72	152	154819	20.00	ng/ul	0.00
18) Naphthalene-d8	10.50	136	634250	20.00	ng/ul	0.00
35) Acenaphthene-d10	14.36	164	391593	20.00	ng/ul	0.00
61) Phenanthrene-d10	17.10	188	903924	20.00	ng/ul	0.00
75) Chrysene-d12	21.29	240	1041854	20.00	ng/ul	0.00
83) Perylene-d12	23.52	264	1047729	20.00	ng/ul	0.00

## System Monitoring Compounds

3) 1,4-Dioxane-d8	3.25	96	508	0.15	ng/uL	0.00
5) Phenol-d5	6.89	99	14343	1.07	ng/ul	0.00
7) Bis-(2-Chloroethyl)ether-d	7.05	67	39174	5.15	ng/ul	0.00
9) 2-Chlorophenol-d4	7.25	132	42377	3.95	ng/ul	0.00
13) 4-Methylphenol-d8	8.42	113	29093	2.65	ng/ul	0.00
19) Nitrobenzene-d5	8.86	128	24944	5.52	ng/ul	0.00
22) 2-Nitrophenol-d4	9.59	143	27265	6.34	ng/ul	0.00
26) 2,4-Dichlorophenol-d3	10.12	165	50289	4.61	ng/ul	0.00
29) 4-Chloroaniline-d4	10.64	131	10965	0.96	ng/ul	0.00
43) Dimethylphthalate-d6	13.77	166	180130	5.24	ng/ul	0.00
46) Acenaphthylene-d8	14.05	160	218412	4.99	ng/ul	0.00
51) 4-Nitrophenol-d4	14.56	143	6962	1.34	ng/ul	0.01
57) Fluorene-d10	15.35	176	159529	5.47	ng/ul	0.00
62) 4,6-Dinitro-2-methylphenol	15.46	200	22082	5.63	ng/ul	0.00
70) Anthracene-d10	17.20	188	248754	5.38	ng/ul	0.00
76) Pyrene-d10	19.49	212	286587	5.38	ng/ul	0.00
87) Benzo(a)pyrene-d12	23.37	264	276796	5.21	ng/ul	0.00

## Target Compounds

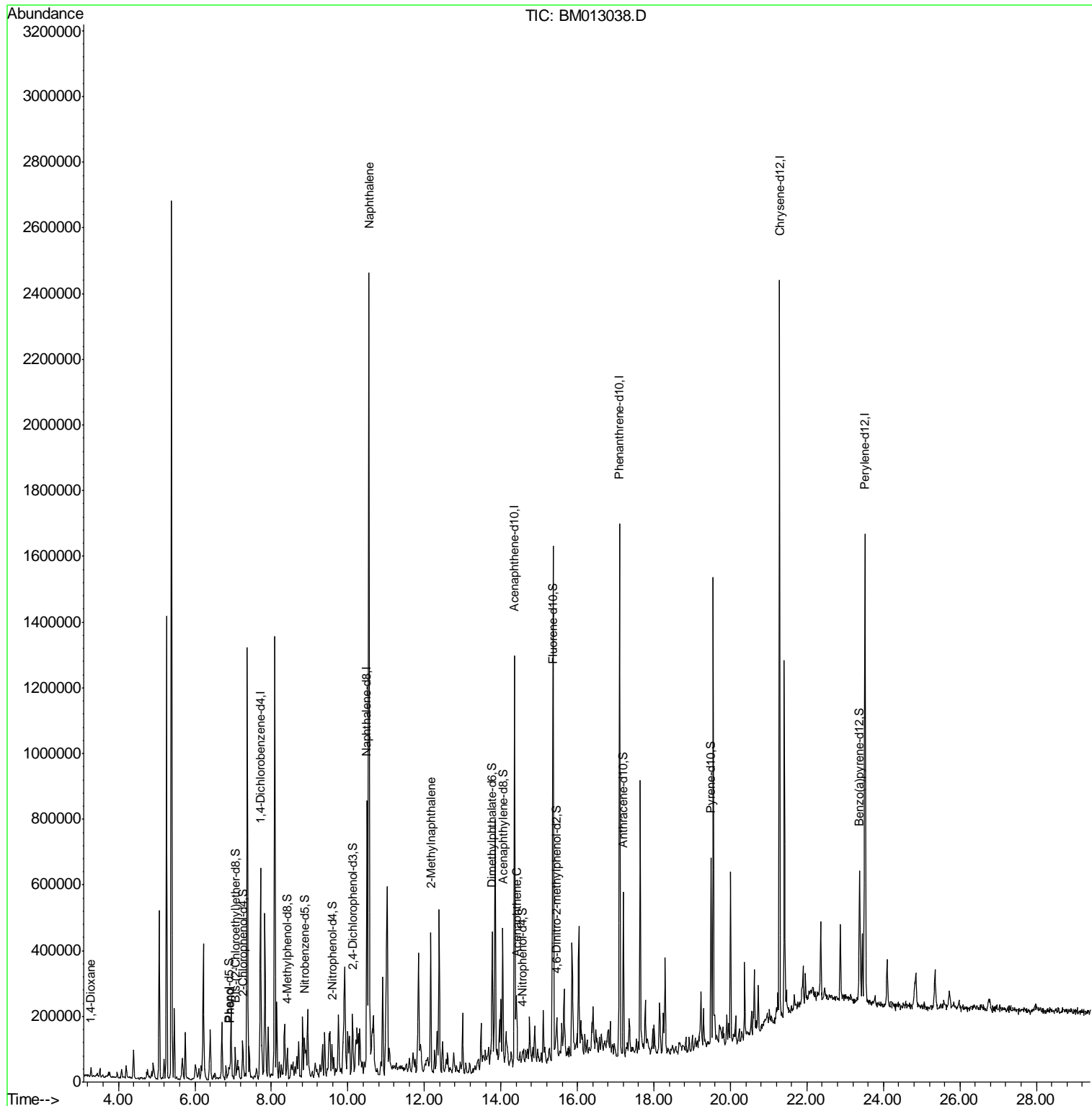
					Ovalue
2) 1,4-Dioxane	3.28	88	13039	3.551	ng/uL# 61
6) Phenol	6.92	94	16829	1.271	ng/ul# 83
28) Naphthalene	10.55	128	1885682	57.699	ng/ul 99
34) 2-Methylnaphthalene	12.16	142	178893	7.482	ng/ul 92
49) Acenaphthene	14.42	153	56311	2.078	ng/ul 93

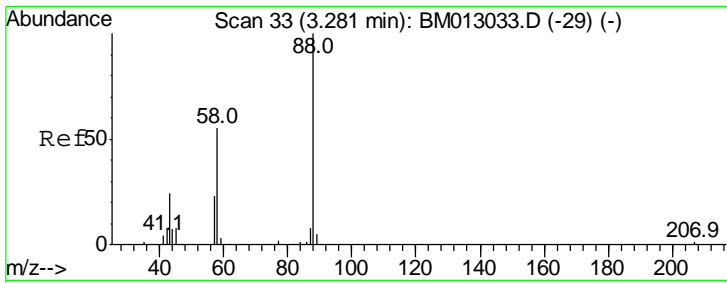
(#) = qualifier out of range (m) = manual integration (+) = signals summed

Data Path : Z:\HPCHEM1\BNA M\DATA\BM111717\  
 Data File : BM013038.D  
 Acq On : 18 Nov 2017 13:58  
 Operator : SJ/JU  
 Sample : I6405-05 5X  
 Misc :  
 ALS Vial : 48 Sample Multiplier: 1

Instrument :  
 BNA\_M  
 ClientSampled :  
 BE2S7

Quant Time: Nov 20 11:09:15 2017  
 Quant Method : Z:\HPCHEM1\BNA M\METHODS\SOM-EPA-BM111617.M  
 Quant Title : SVOA CALIBRATION  
 QLast Update : Mon Nov 20 06:14:09 2017  
 Response via : Initial Calibration

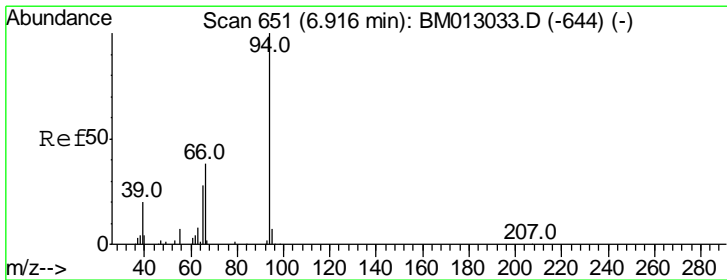
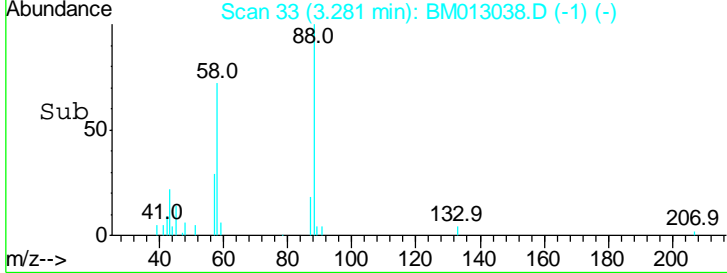
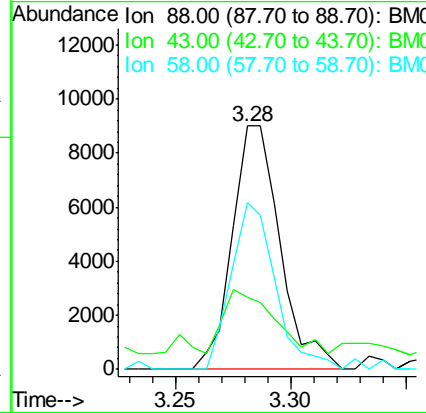
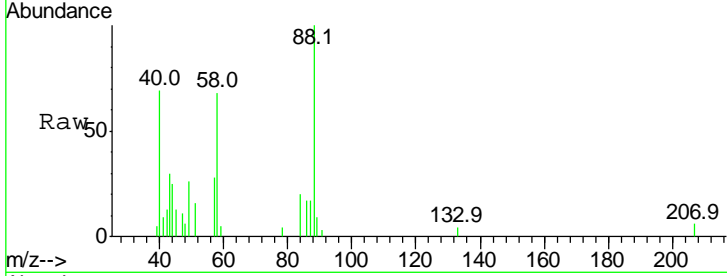




#2  
 1,4-Dioxane  
 Concen: 3.551 ng/uL  
 RT: 3.28 min Scan# 33  
 Delta R.T. 0.00 min  
 Lab File: BM013038.D  
 Acq: 18 Nov 2017 13:58

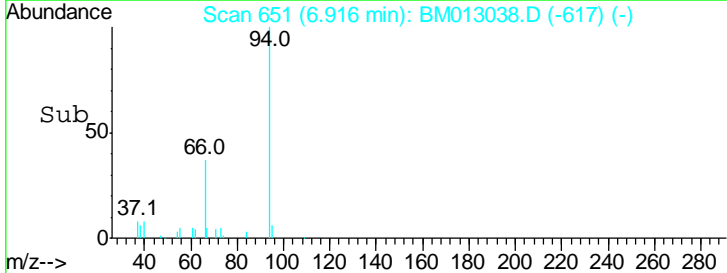
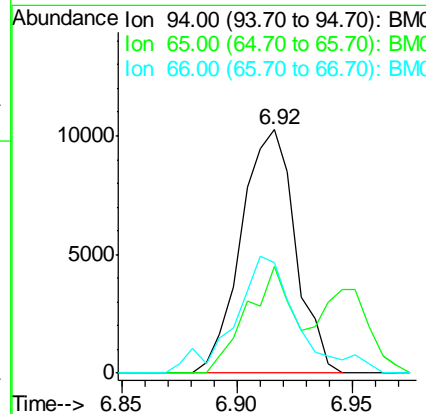
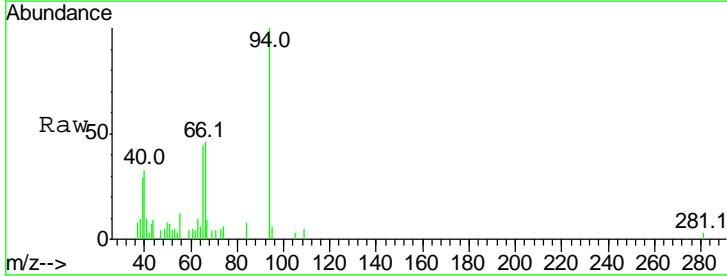
Instrument :  
 BNA\_M  
 ClientSampleId :  
 BE2S7

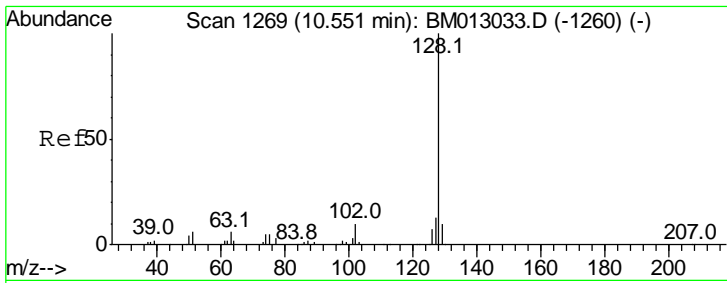
Tgt Ion	Resp	Lower	Upper
88	13039		
43	27.7	48.0	72.0#
58	63.3	80.0	120.0#



#6  
 Phenol  
 Concen: 1.271 ng/uL  
 RT: 6.92 min Scan# 651  
 Delta R.T. 0.00 min  
 Lab File: BM013038.D  
 Acq: 18 Nov 2017 13:58

Tgt Ion	Resp	Lower	Upper
94	16829		
65	43.8	28.2	42.4#
66	45.5	47.2	70.8#



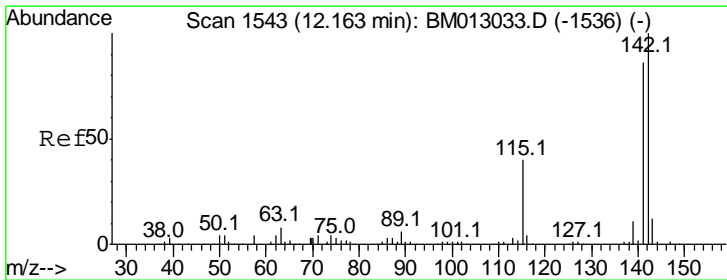
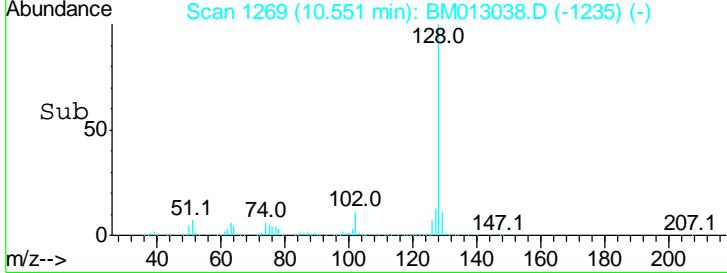
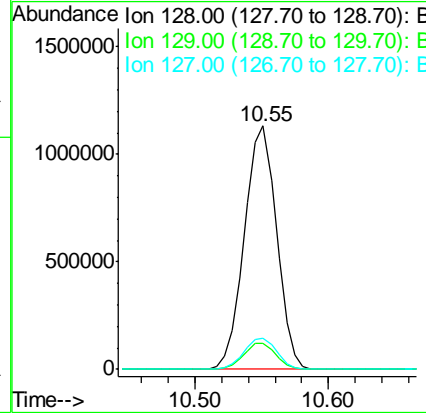
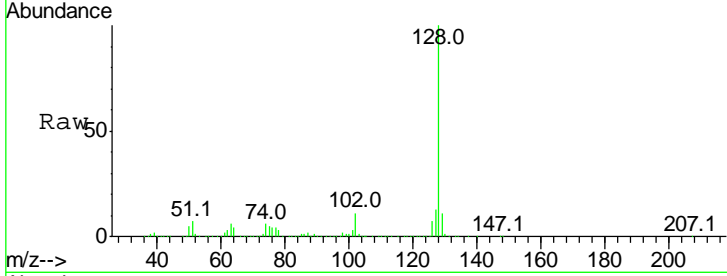


#28  
 Naphthalene  
 Concen: 57.699 ng/ul  
 RT: 10.55 min Scan# 1269  
 Delta R.T. 0.00 min  
 Lab File: BM013038.D  
 Acq: 18 Nov 2017 13:58

Instrument :  
 BNA\_M  
 ClientSampled :  
 BE2S7

Tgt Ion:128 Resp: 1885682

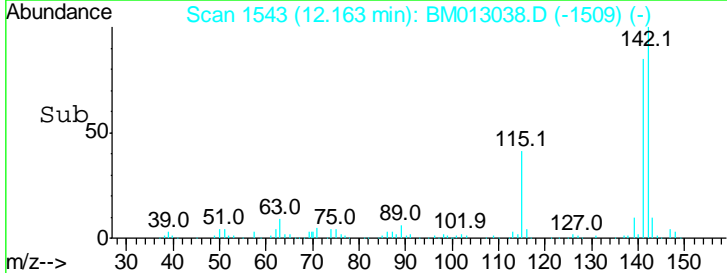
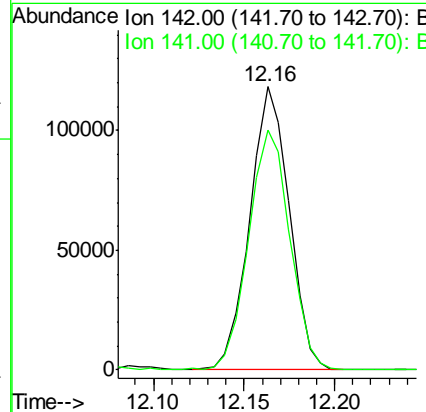
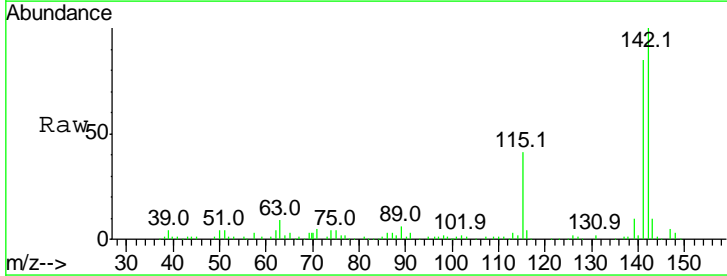
Ion	Ratio	Lower	Upper
128	100		
129	10.9	8.8	13.2
127	12.9	10.6	16.0

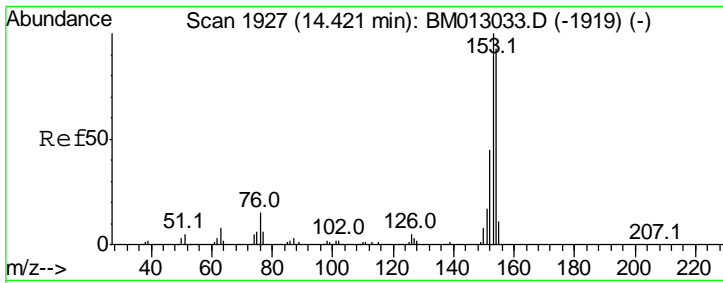


#34  
 2-Methylnaphthalene  
 Concen: 7.482 ng/ul  
 RT: 12.16 min Scan# 1543  
 Delta R.T. 0.00 min  
 Lab File: BM013038.D  
 Acq: 18 Nov 2017 13:58

Tgt Ion:142 Resp: 178893

Ion	Ratio	Lower	Upper
142	100		
141	84.7	74.1	111.1





#49  
 Acenaphthene  
 Concen: 2.078 ng/ul  
 RT: 14.42 min Scan# 1926  
 Delta R.T. -0.01 min  
 Lab File: BM013038.D  
 Acq: 18 Nov 2017 13:58

**Instrument :**  
 BNA\_M  
**ClientSampled :**  
 BE2S7

Tot Ion	153	Resp	56311
Ion	Ratio	Lower	Upper
153	100		
152	50.3	37.6	56.4
154	95.3	70.4	105.6

